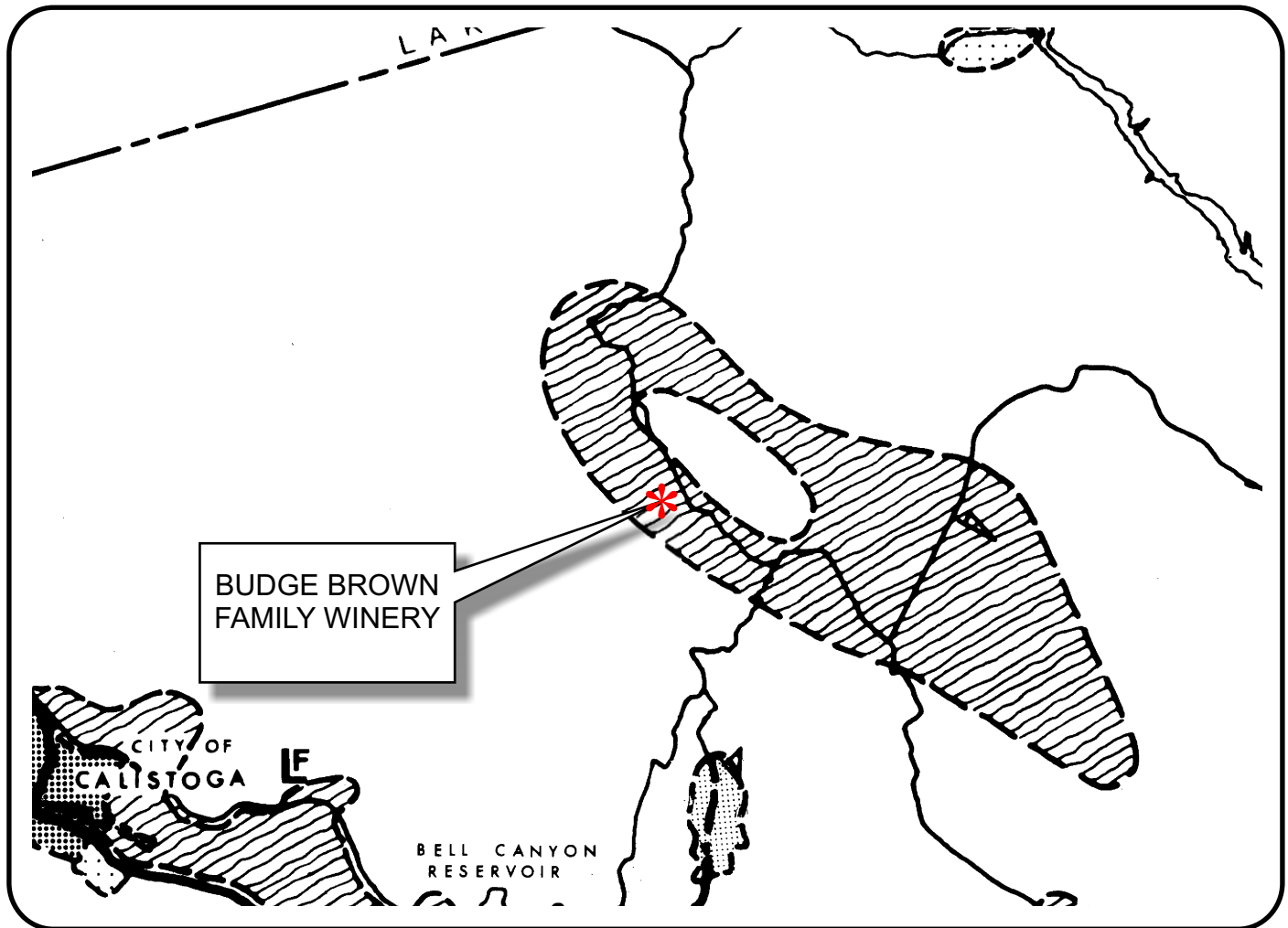


NAPA COUNTY LAND USE PLAN 1998 - 2000



LEGEND

TRANSPORTATION

- LIMITED ACCESS HIGHWAY
- MAJOR ROAD
- SECONDARY ROAD
- RAILROAD
- AIRPORT
- LANDFILL SITE

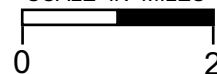
OPEN SPACE

- AGRICULTURE, WATERSHED & OPEN SPACE
- AGRICULTURAL RESOURCE

URBAN

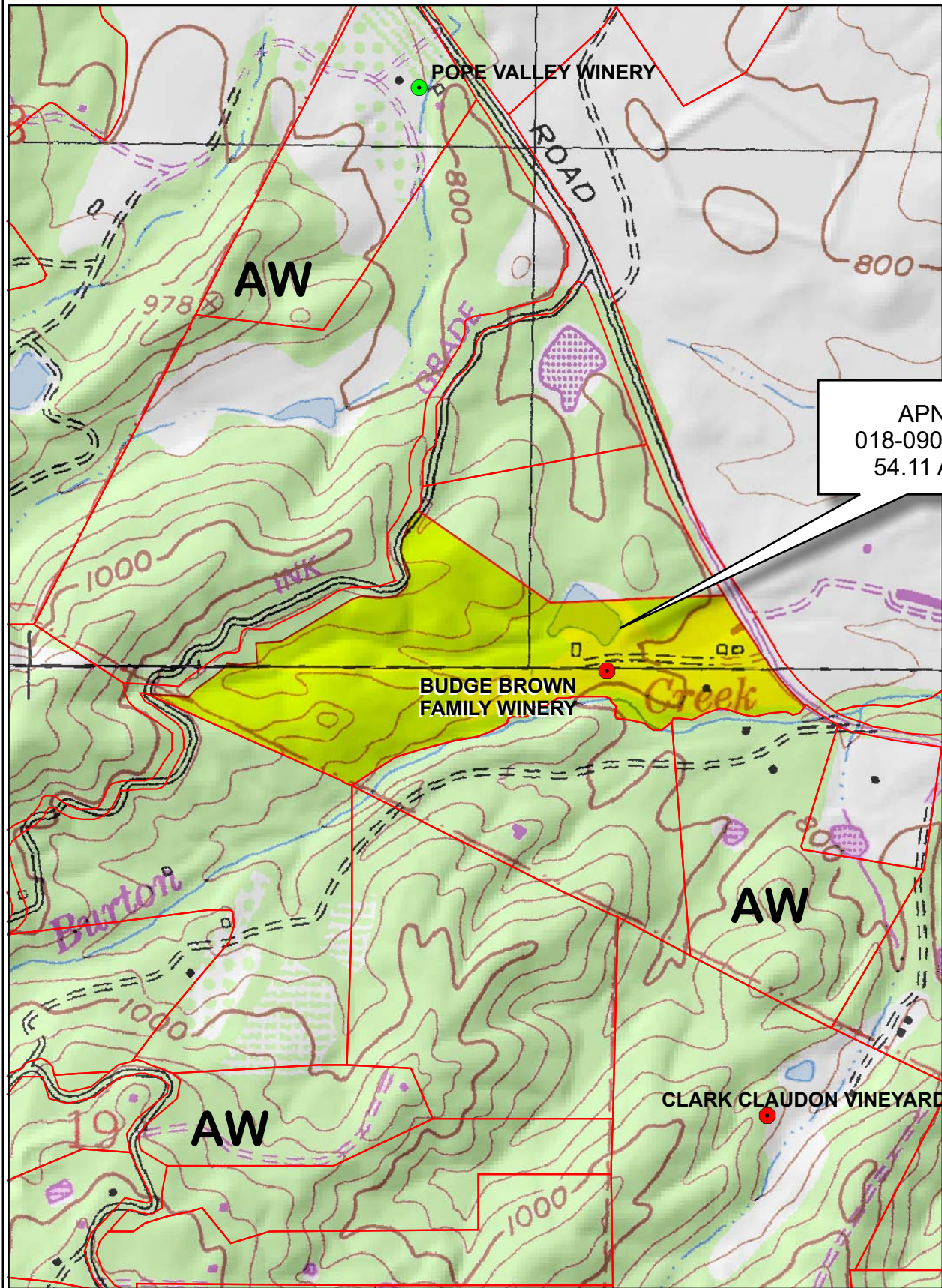
- CITIES
- URBAN RESIDENTIAL
- RURAL RESIDENTIAL
- COMMERCIAL
- INDUSTRIAL
- PUBLIC - INSTITUTIONAL

SCALE IN MILES



APN
018-090-082
04-28-2008
12D UP

BUDGE BROWN FAMILY WINERY



APN
018-090-082
54.11 Ac.

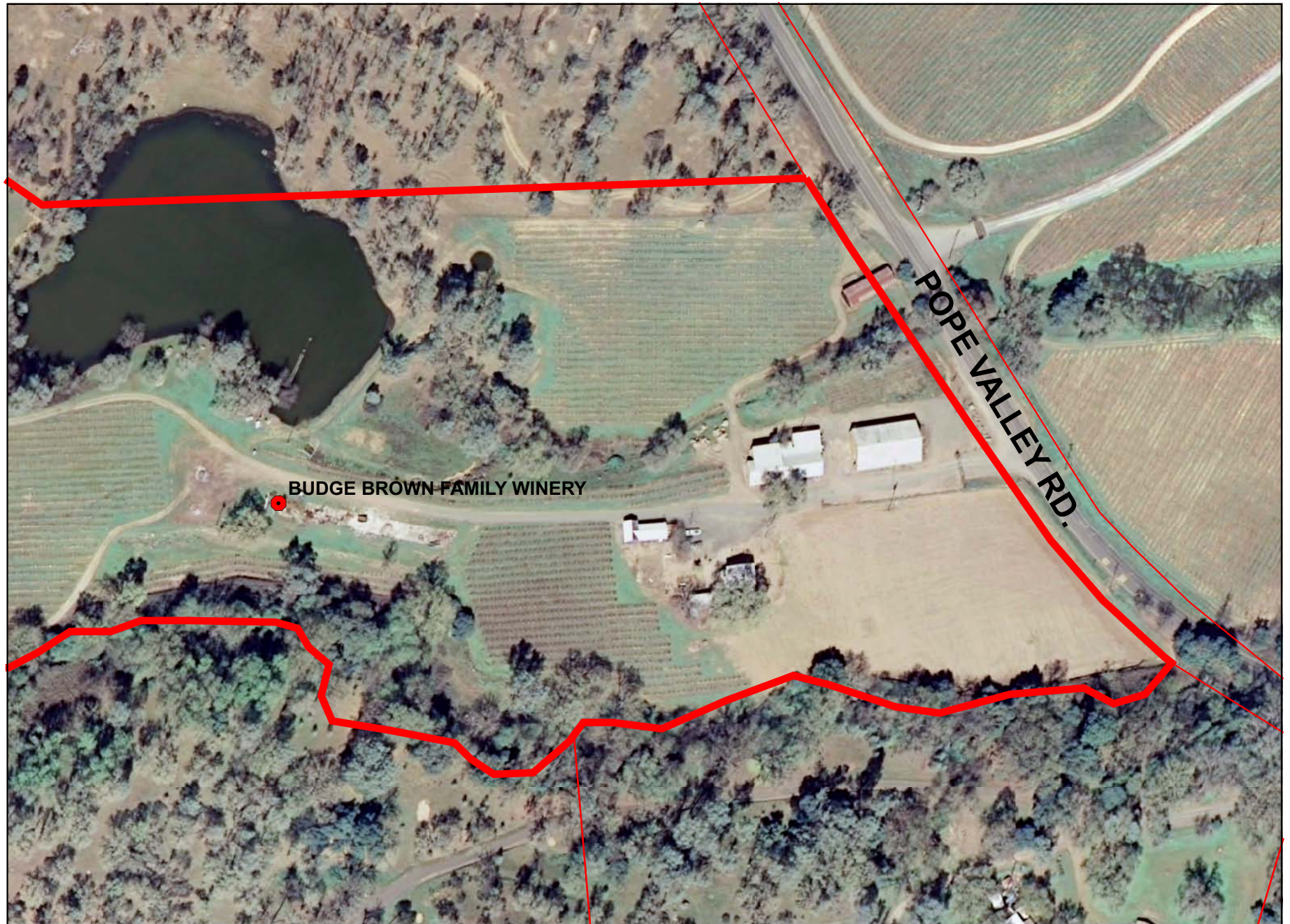


Legend

- Wineries in Vicinity
- Producing (green dot)
 - Approved (yellow dot)
 - Pending (red dot)
- Zoning (black outline)
- Parcels (red outline)

0 400 800 1,600 2,400 3,200 Feet

BUDGE BROWN FAMILY WINERY



0 100 200 400 600 800 Feet

WINERY DETAIL

[illegible]

**WINERY SITE PLAN
(DETAIL -A)**

NOTES

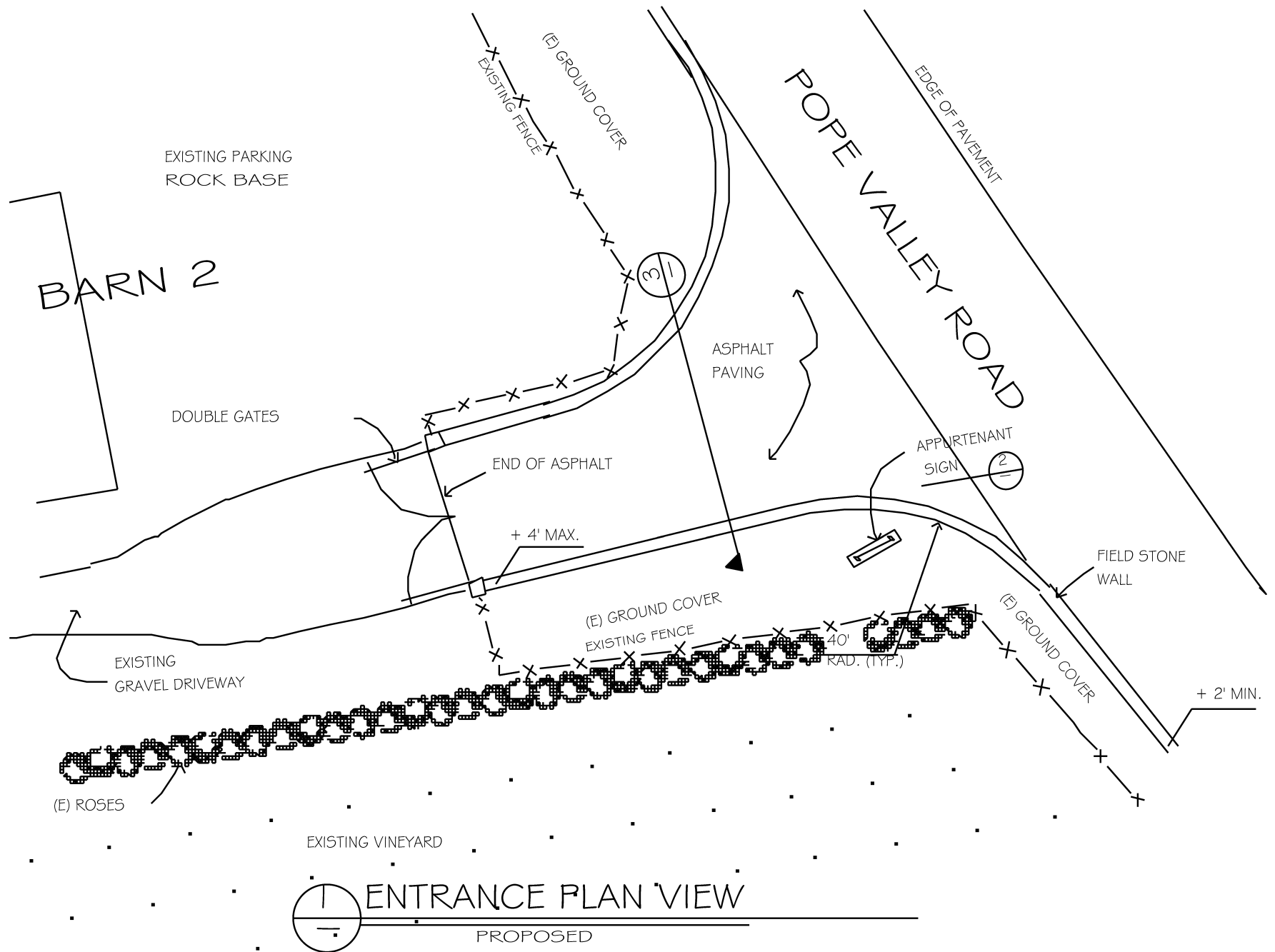
- 1.) H/C PARKING SPACE SHALL BE ASPHALT WITH CHIP SEALED BLUE SHALE PATHS TO SIDEWALK.
- 2.) PLANTERS - HYDRANGEA & TULIP MIX WITH AUTOMATIC WATERING SYSTEM. PLANTERS OUTLINED WITH NATIVE ROCKS.
- 3.) PARKING - (18) 10'x 20' SPACES
(2) HANDICAPPED
(20) TOTAL
- 4.) PARKING LOT STRIPING SHOWN ARE FOR INFORMATION ONLY TO SHOW SPACES AVAILABLE. H/C SPACES WILL BE PERMANENT MARKINGS.

04-28-2008 12D UP

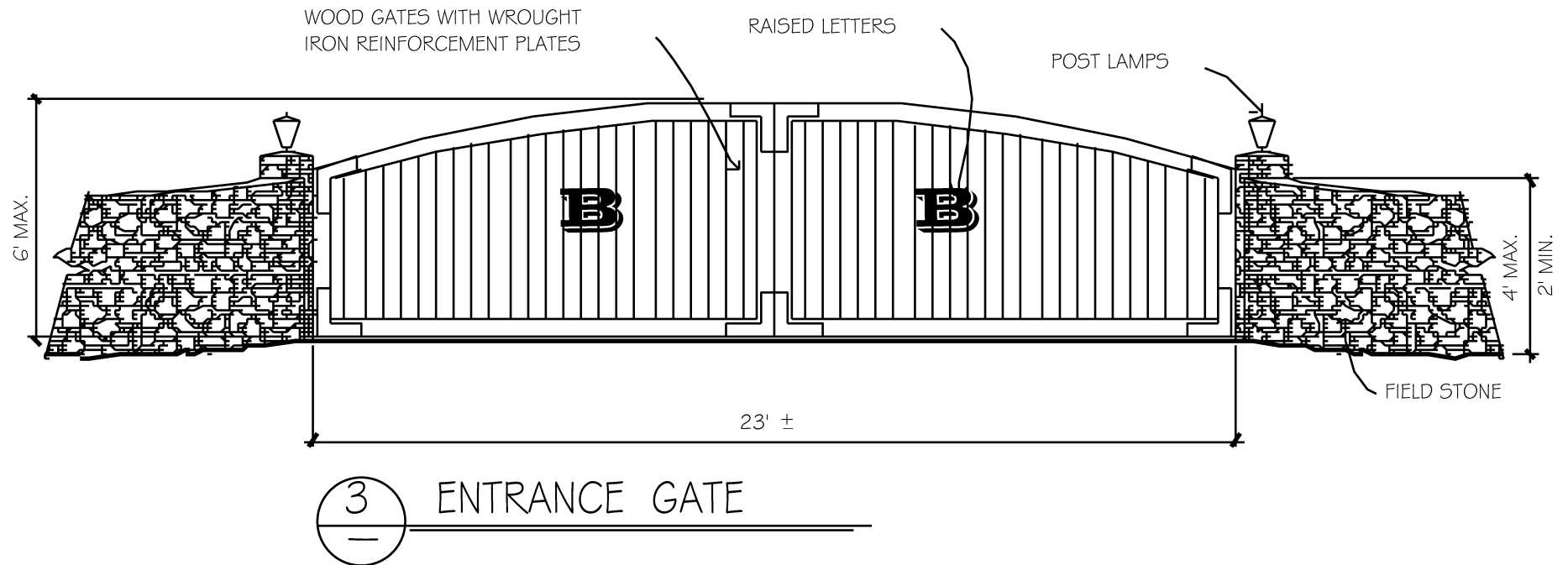
**Napa County Conservation
Development and Planning Department**

Budge Brown Winery_up1.cdr

BUDGE BROWN FAMILY WINERY

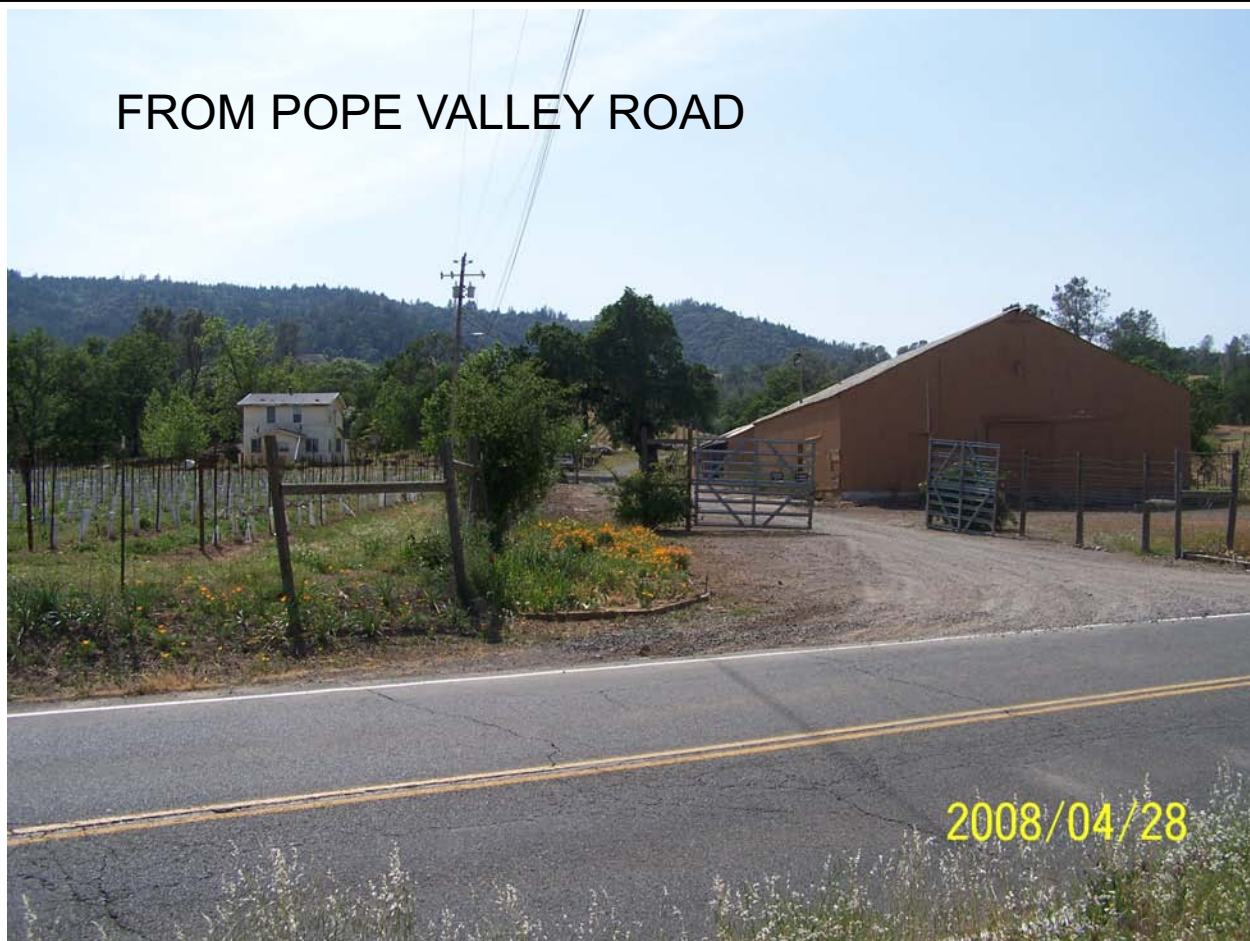


BUDGE BROWN FAMILY WINERY



BUDGE BROWN FAMILY WINERY

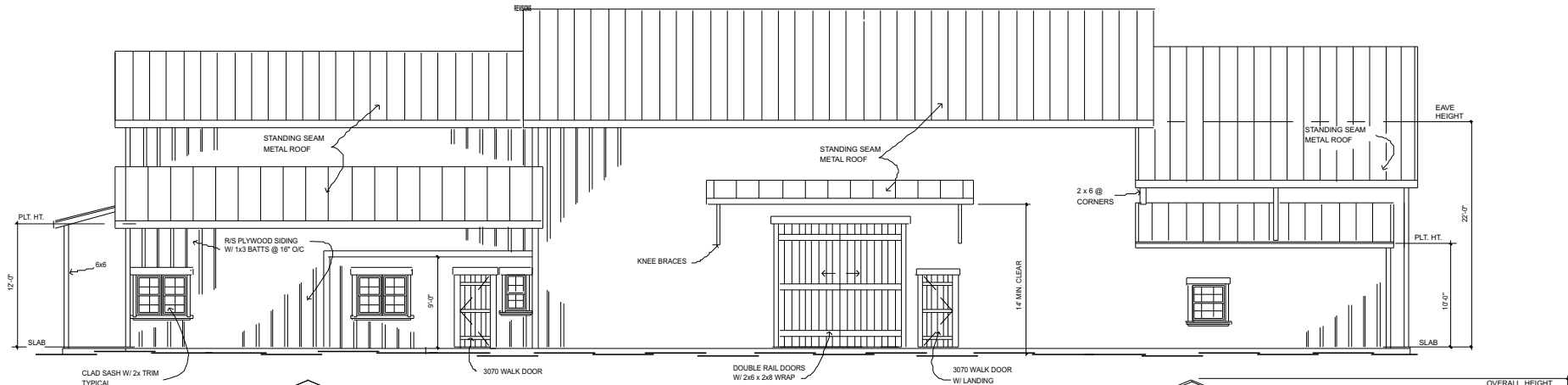
FROM POPE VALLEY ROAD



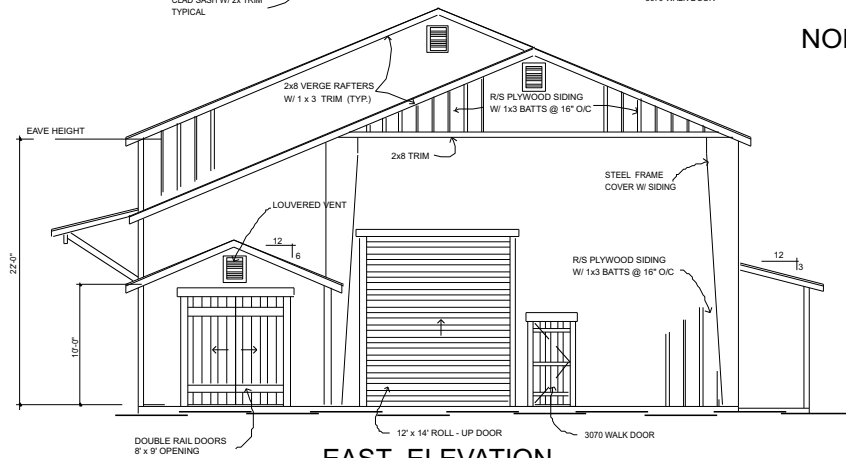
BUILDING SITE



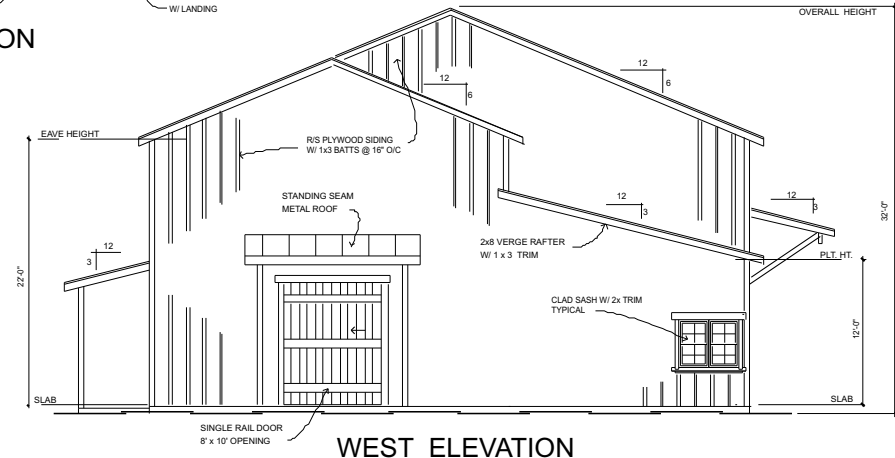
BUDGE BROWN FAMILY WINERY



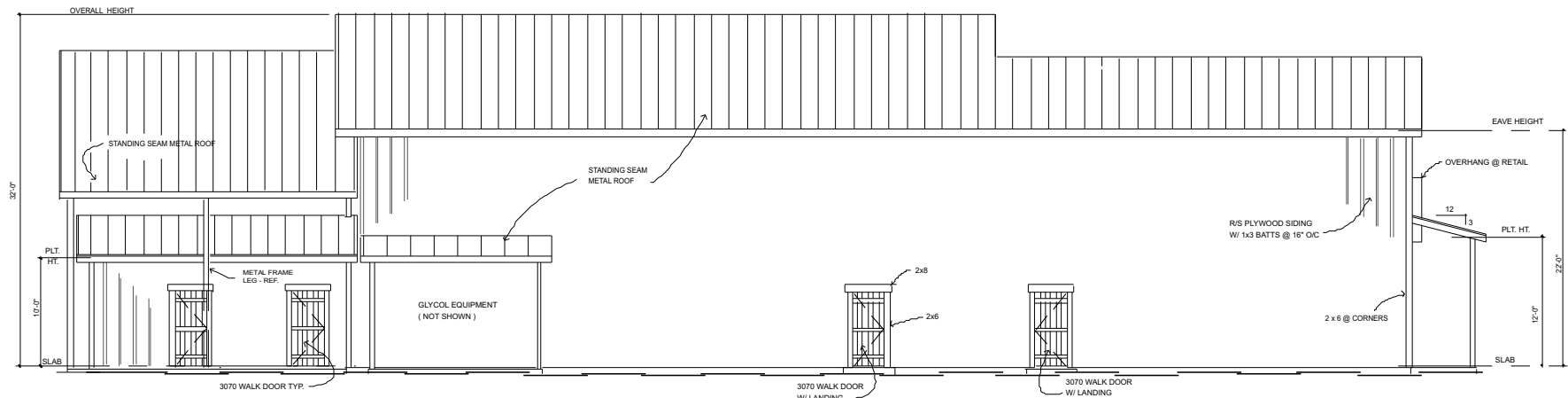
NORTH ELEVATION



EAST ELEVATION

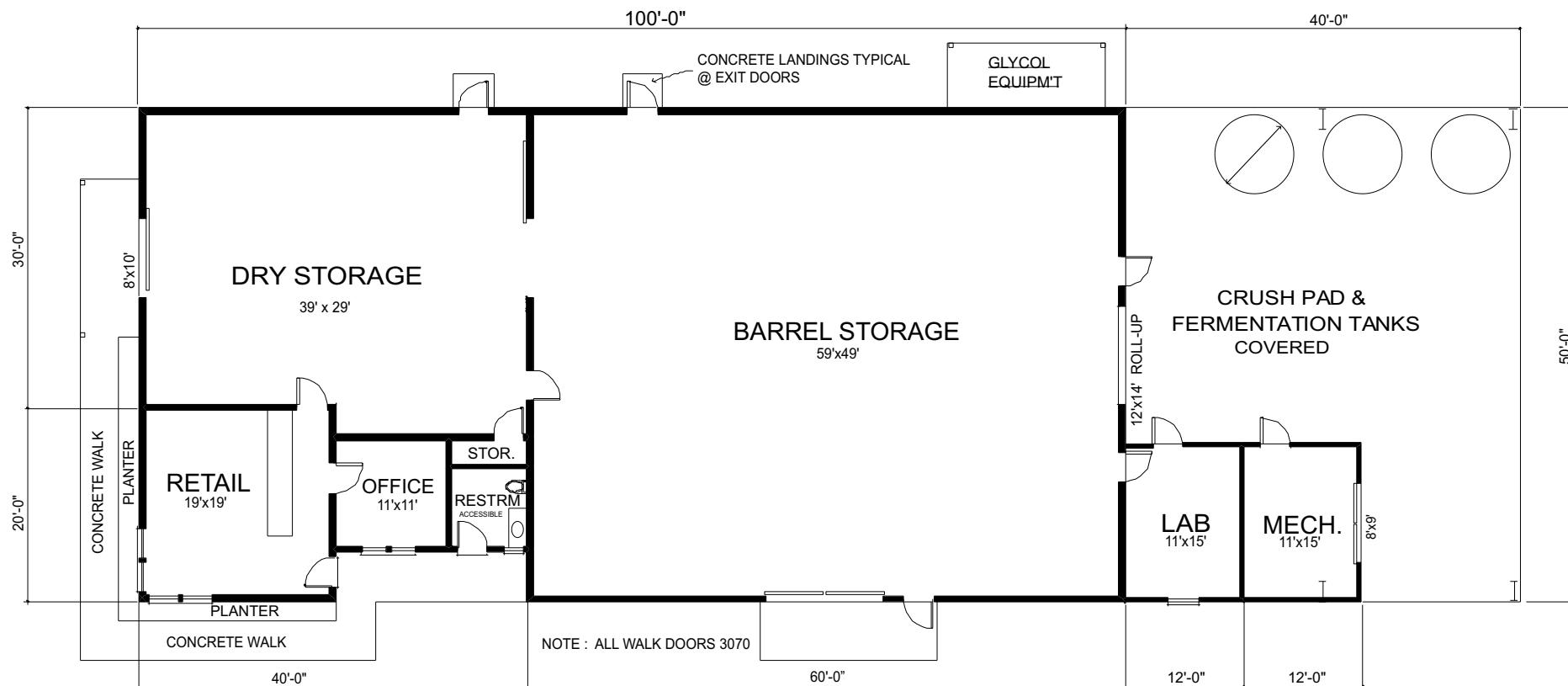


WEST ELEVATION



SOUTH ELEVATION

BUDGE BROWN FAMILY WINERY



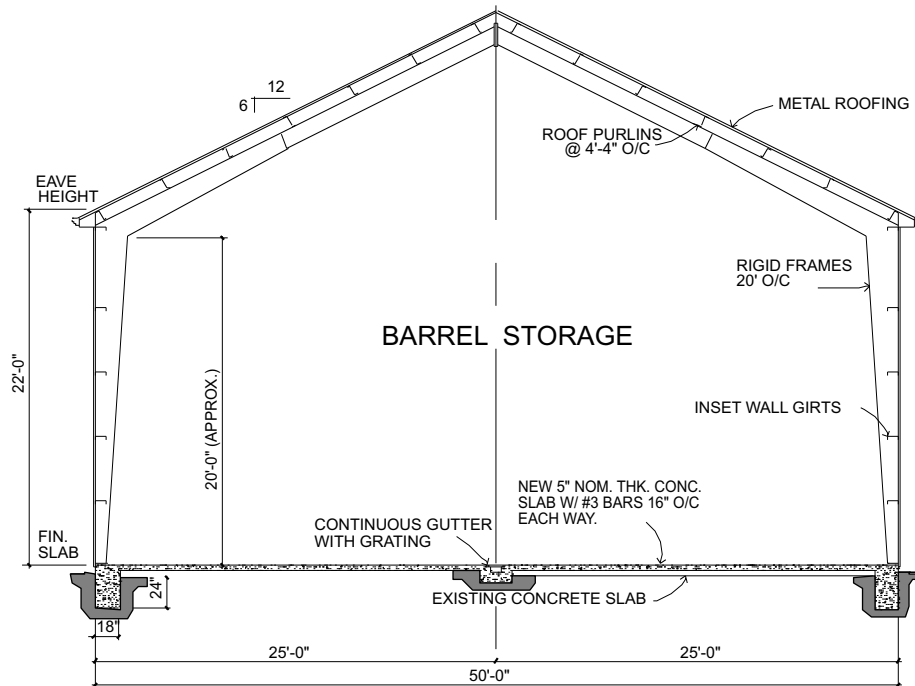
FLOOR PLAN

AREAS

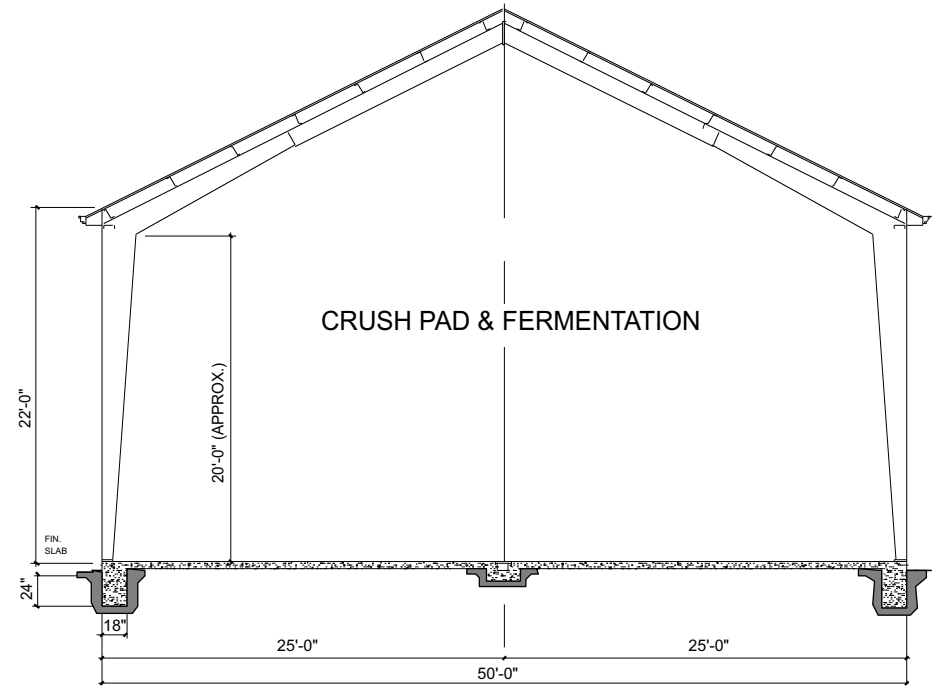
RETAIL	400	SQ. FT.
OFFICE	144	
RESTROOM	64	
DRY STORAGE	1,278	
BARRELL STORAGE	3,000	
LAB	192	
MECHANICAL	192	
TOTAL	5,270	

CRUSH PAD 1,600 SQ. FT.

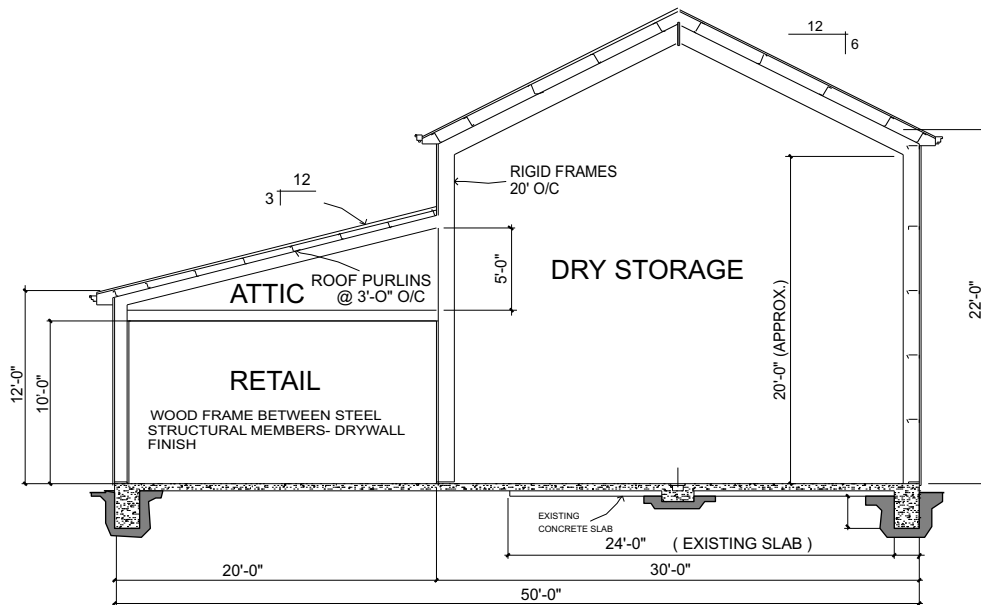
BUDGE BROWN FAMILY WINERY



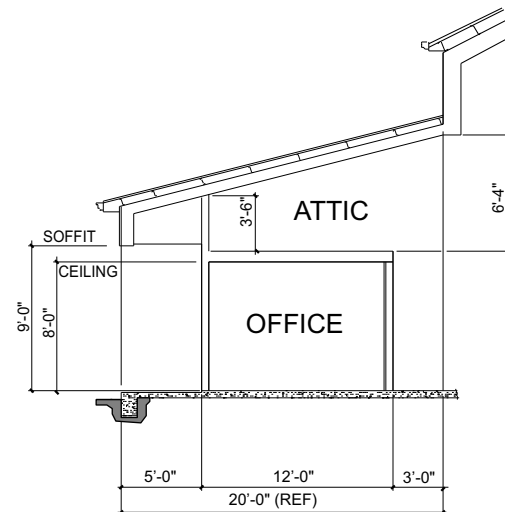
SECTION "B-B"



SECTION "A-A"



SECTION "D-D"



SECTION "C-C"

BUDGE BROWN FAMILY WINERY

