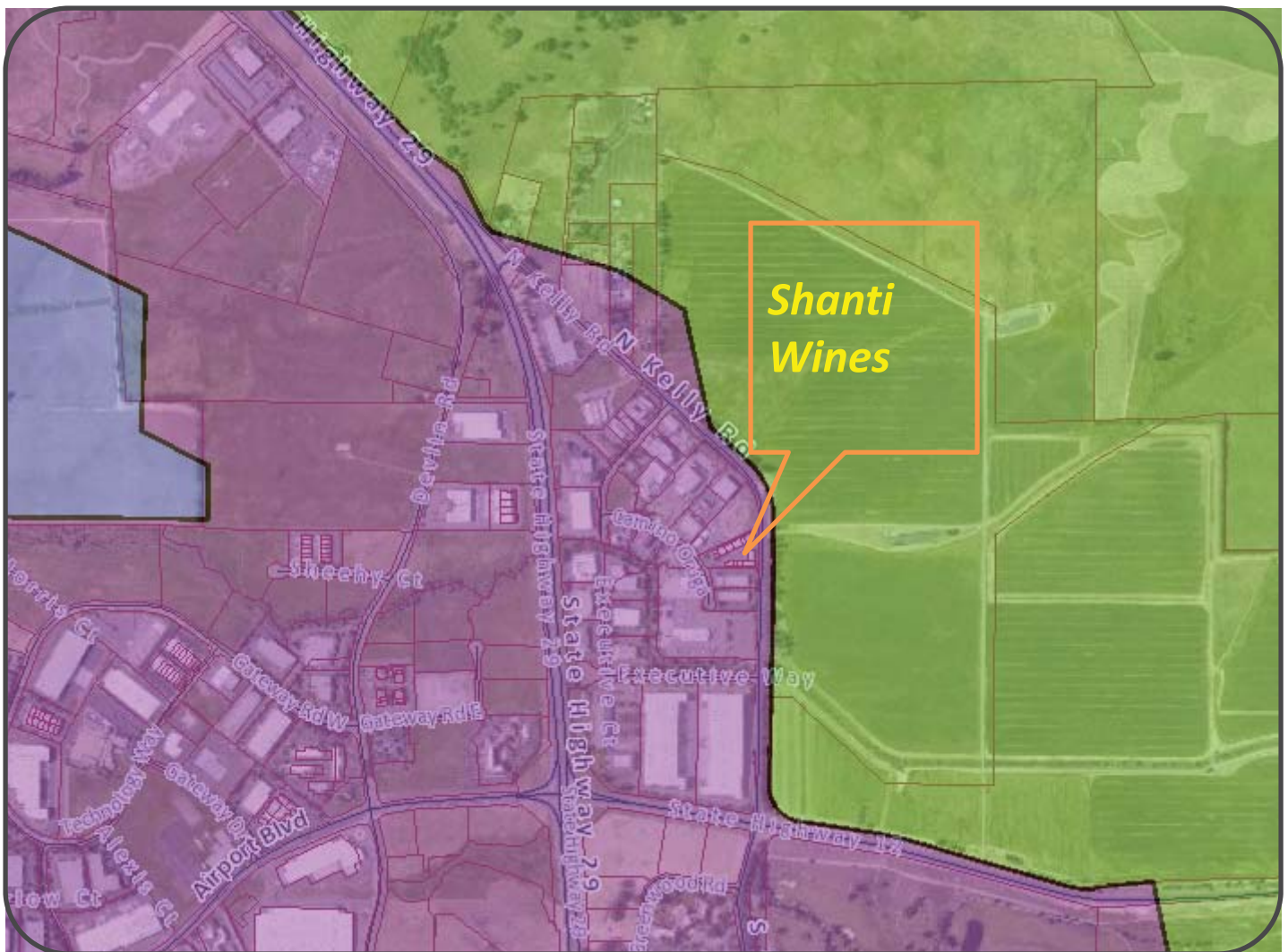


“E”

Graphics

NAPA COUNTY LAND USE PLAN 2008 – 2030



SCALE IN MILES
0 [0.2 Mile]

LEGEND



URBANIZED OR NON-AGRICULTURAL

- Study Area
- Cities
- Urban Residential*
- Rural Residential*
- Industrial
- Public-Institutional

OPEN SPACE

- Agriculture, Watershed & Open Space
- Agricultural Resource

TRANSPORTATION

- Mineral Resource
- Limited Access Highway
- American Canyon ULL
- City of Napa RUL
- Landfill - General Plan
- Road
- Airport
- Railroad
- Airport Clear Zone

* See Action Item AG/LU-114.1 regarding agriculturally zoned areas within these land use designations



LEGEND

— Zoning
— Parcels

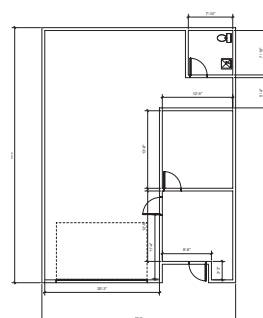
0 0.2 Mile



ZONING MAP



Existing Conditions



(E) PLAN

1 FLOOR PLAN
Scale: 1/4" = 1'-0"

WALL LEGEND

☐ (E) WALL TO REMAIN

☒ (N) WALL

[illegible]

SHANTI WINE
194 Camino Oruga #9
Napa, Ca. 94558

FUMIO SUDA ARCHITECT
1522 WALNUT ST, BERKELEY,
CA 94706
fumioarchitect.com

Project number 2019-442

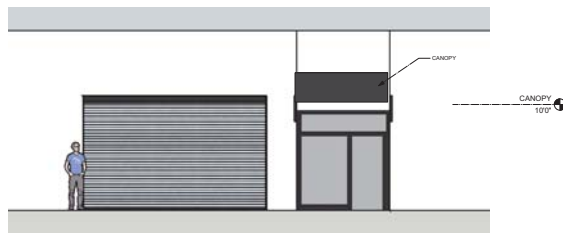
Project number	2019-442
Date	12-20-19

Drawn by rs

Checked by	FS
------------	----

--	--

A-1



3 EXTERIOR ELEVATIONS

ADJUST HEIGHT AT SITE W/OWNER

3 Scale: 1/2" = 1'-0"

[illegible]

SHANTI WINE

194 Camino Oruga #9

Napa, Ca. 94558

FUMIO SUDA ARCHITECT
1522 WALNUT ST. BERKELEY.

1521 WALNUT ST, SUITE
CA94706
fumioarchitect.com

1-800-368-5848

Project number	2019-442
Date	12.20.19

Drawn by rs

checked by	FS
------------	----

A-2



- Above Ground Storage of Potable or Non Potable Water
- Rainwater Collection
- Fire Protection
- Landscape/Irrigation
- Many more

- Above Ground Storage of Potable or Non Potable Water
- Rainwater Collection
- Fire Protection
- Landscape/Irrigation
- Many more

- All Images and Drawing are for illustrative
- Purposes only and do not Necessarily Represent this exact product
- Dimensions may vary on polyethylene tanks by +/-3% (standard rotational molding tolerance)
- Polyethylene water tanks are designed for water storage only at atmospheric pressure only and venting equipment should be sized to limit pressure or vacuum to a maximum of 1/2" water column (0.018 PSI)
- The tank is made from Bpa free, FDA Compliant
- The resin is NSF certified manufacturing plants
- For warranty to be valid, the tank must be installed and used per manufacturer's guidelines for use and installation
- Must use flexible connectors on all fitting connections per tank manufacture's recommendations

- ✔ Bpa Free & FDA Compliant
- ✔ 3-Year Manufacturer's Warranty
- ✔ Quality Construction & Durable
- ✔ In Stock and On Sale Today



Please select from the following option(s) to see pricing and availability.

Jolly 25 Motorized Destemmer Only W/Screw Feed & Must Pump

◀ WRS & WCR Series Water Removal System

**WCR-9SS 4/10 HP, 110 GPM @ 5' Wastewater Collection/Removal System
w/ Steel Cover**

SKU: 509082 Brand: Little Giant

[illegible]

SHANTI WINE

194 Camino Oruga #9
Napa, Ca. 94558

FUMIO SUDA ARCHITECT
1522 WALNUT ST. BERKELEY.

CA94706
fumioarchitect.com

Project number	2019-442
----------------	----------

Date	12-20-19
Owner by	...

Drawn by	FS
Checked by	FS

[illegible]

A-3