

# Stapleton

Mixed Use Community  
Airport Adaptive Reuse Plan  
*Denver, Colorado*

4,700 Acres  
1,500 Acres Open Space set aside  
12,000 Homes  
4,300,000 sf Retail  
7,800,000 sf Office / Commercial  
Planned 1999 and ongoing  
3,600 Homes built

<http://www.calthorpe.com/stapleton>  
<http://discover.stapletondenver.com>



Images: Calthorpe Associates





Images: Calthorpe Associates







# Daybreak

Mixed Use Community  
Brownfield Reuse  
*South Jordan, Utah*

4,150 Acres  
20% of land dedicated to Open Space  
20,000 Homes  
20,000 Jobs  
3,500,000 sf Retail  
5,300,000 sf Office / Commercial  
Plan Adopted 2002 and ongoing  
Over 2,500 homes built

<http://hodges-design.net>  
<http://www.daybreakutah.com>

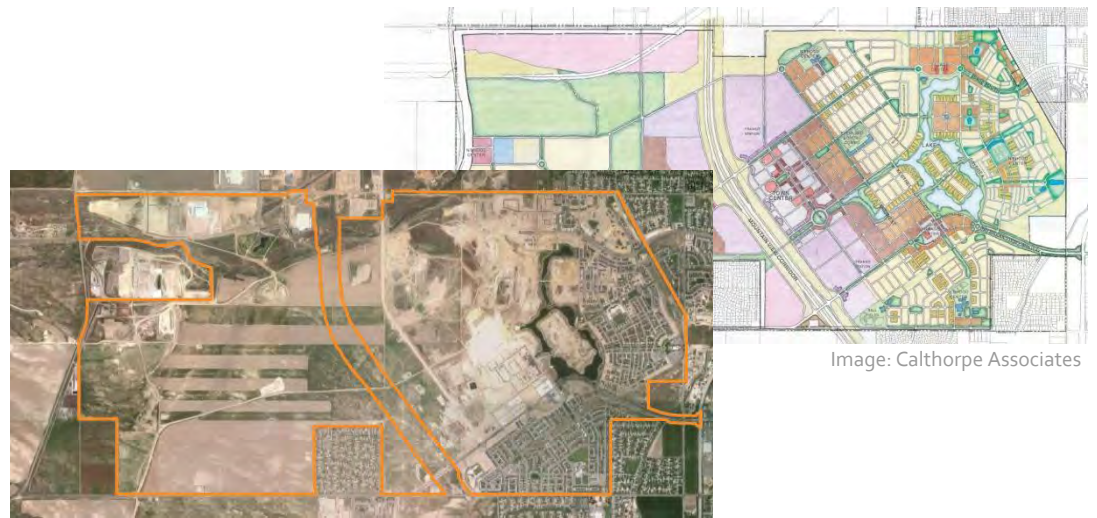


Image: Calthorpe Associates

Image: Calthorpe Associates









Image: Calthorpe Associates



Photos this page: Kennecott Land / Sahara







Mixed Use Neighborhood  
Industrial Site Adaptive Reuse  
*San Jose, California*

75 Acres  
2,150 Homes  
800,000 sf Retail/Commercial  
Planned 1995  
Nearing Completion

*<http://www.calthorpe.com/jackson-taylor>  
[http://www.sanjoseca.gov/planning/pdf\\_brochures/bro\\_jackson.pdf](http://www.sanjoseca.gov/planning/pdf_brochures/bro_jackson.pdf)*



Image: Calthorpe Associates



Image: Google Earth

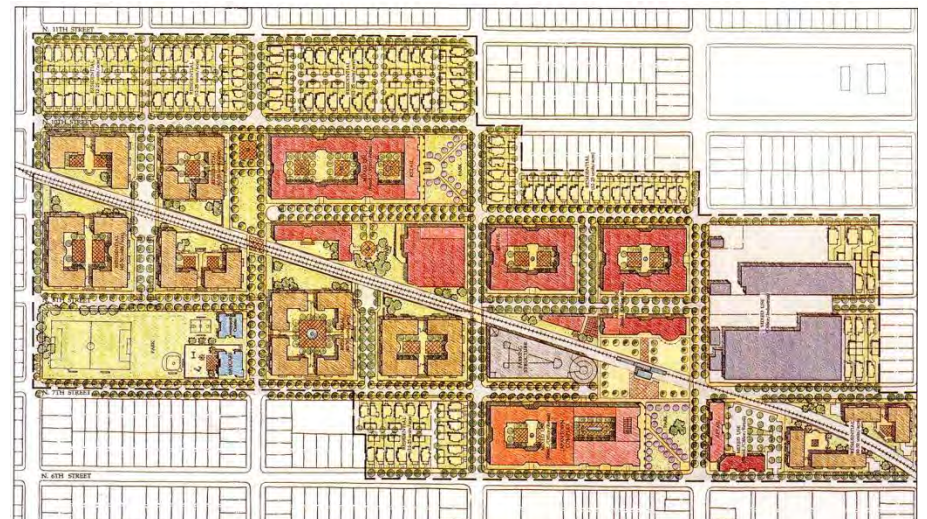


Image: Calthorpe Associates















# Mixed Use Neighborhood

## *San Mateo, California*

75 Acres

## 740 Homes

300,000 sf Retail / Commercial

500,00 sf Office

Planned 1997

Construction completed 2004

<http://www.calthorpe.com/bay-meadows>



Image: Calthorpe Associates



Image: Calthorpe Associates



Image: Google Earth













Images: Calthorpe Associates



# Uptown District

TOD Neighborhood / Urban Infill  
*Oakland, California*

2,350 Homes

150,000 sf Retail / Commercial

Planned 2005

Phase 1 Construction complete

<http://www.calthorpe.com/uptown>

<http://www.theuptown.net>



Image: Calthorpe Associates



Image: Google Earth

















# Squaw Valley

Resort Community  
*Lake Tahoe, California*



Image:: Tor Johnson / Squaw Valley



Image: Johnnyboyca / Creative Commons



Image: Chris Beck / Squaw Valley