

OneBayArea

Sustainable Communities Strategy



A Local-Regional Partnership

December 2010

OneBayArea
Working for Sustainability

1

Senate Bill 375

- Landmark legislation for California on land use, transportation and environmental planning passed in 2008
- A local-regional process to support neighborhood development, conserve resources and create a sustainable Bay Area



OneBayArea
Working for Sustainability

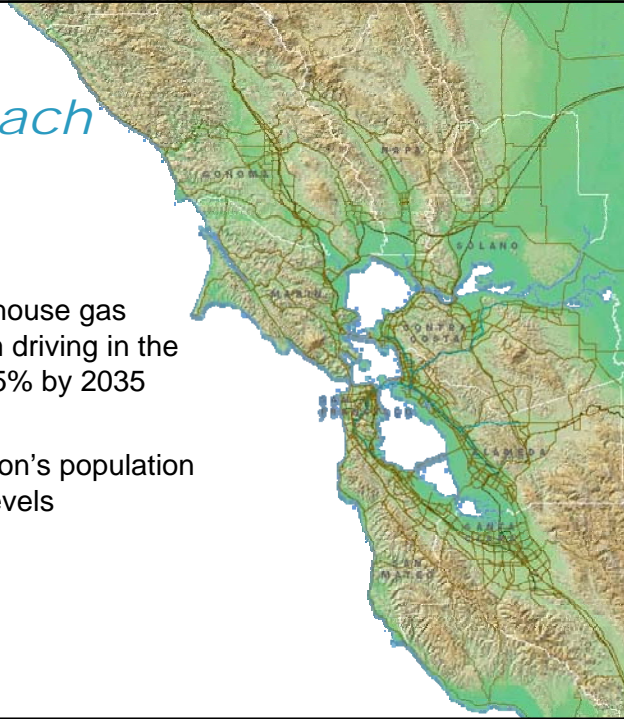
2

Purpose and Approach

- **Goals**

- Reduce greenhouse gas emissions from driving in the Bay Area by 15% by 2035
- House the region's population at all income levels

OneBayArea
Working for Sustainability



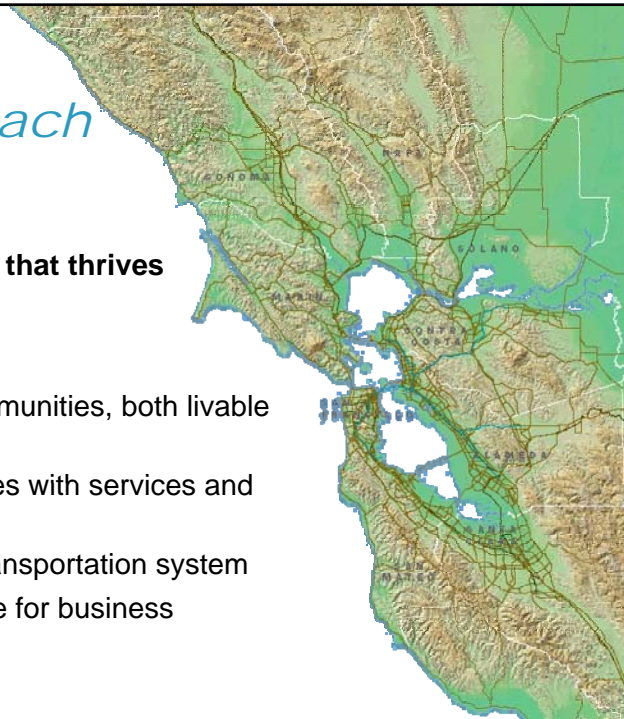
Purpose and Approach

- **Goals**

**Build a Bay Area that thrives
and prospers.**

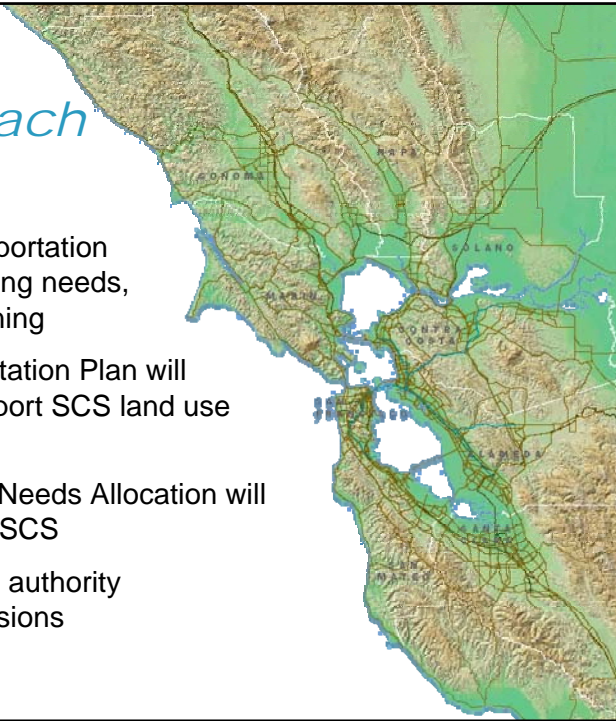
- Complete communities, both livable and affordable
- Walkable places with services and amenities
- Sustainable transportation system
- Attractive place for business

OneBayArea
Working for Sustainability



Purpose and Approach

- Alignment of transportation investments, housing needs, and land use planning
- Regional Transportation Plan will align with and support SCS land use pattern
- Regional Housing Needs Allocation will be consistent with SCS
- No change to local authority over land use decisions



Building on Existing Efforts

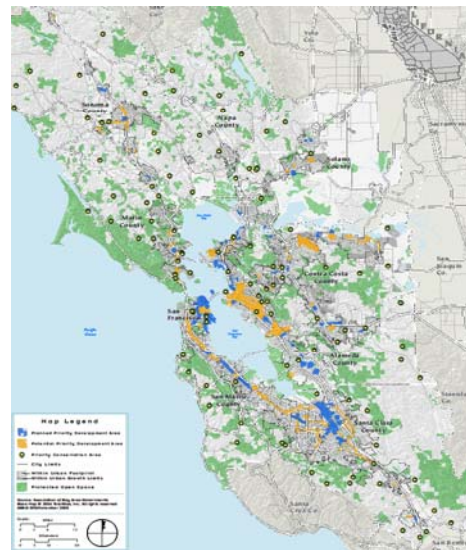
Priority Development Areas

Locally-nominated areas for sustainable development supported by planning and capital grants

- Existing Communities
- Near Transit
- Planned for more housing

Priority Conservation Areas

- Identified resource lands
- Enhance Rural Areas



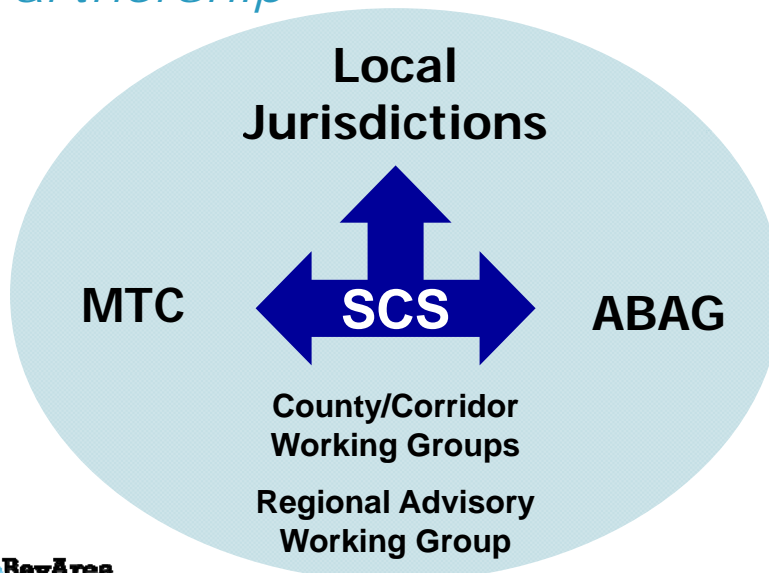
Building on Existing Efforts

Identifying additional opportunity areas for sustainable development.

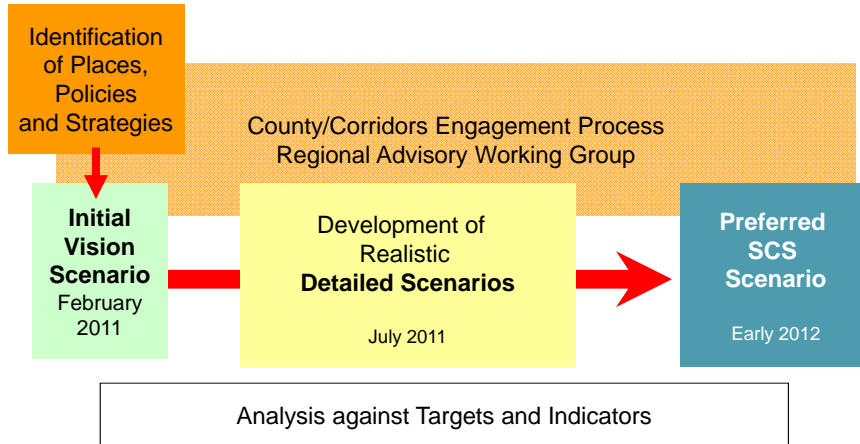
- Mixed-use development in suburban and rural centers
- Retrofitting office parks and shopping centers
- Growing employment centers



Partnership



Process: SCS Scenarios



Regional Housing Needs Allocation

- Essential task of sustainable development in the Bay Area
- Now integrated with land use planning and transportation investments



Regional Transportation Plan

- Link land use choices and transportation investments
- Transportation investments address greenhouse gas emissions reduction and supporting complete communities
- Project assessment: important component of the SCS Detailed Scenarios
- One Environmental Impact Report for both SCS and RTP

Integration of Regional Goals

- **BAAQMD** — CEQA Guidelines
- **BCDC** — Bay Plan and Adaptation Strategies



Unique Role of the City of ... in the SCS

- Local planning efforts:
- Link to SCS:
- Core sustainable strategies:
- Investments required for sustainable development:
- Participation process:

Benefits for all

- SCS rewards cities choosing to advance local goals and improve quality of life beyond their borders through affordable housing, jobs, or reduced driving
- SCS connects local neighborhood concerns (housing, jobs, traffic) to regional objectives and resources
- SCS provides a platform to address high housing costs, poverty, job access, and public health, among other tasks
- SCS recognizes the importance of identifying and evaluating infrastructure investments

Benefits for all

Regional agencies are exploring:

- Grants for affordable housing close to transit
- Infrastructure bank to support investments in housing and jobs close to transit
- Transportation investments that reduce greenhouse gas emissions
- Infrastructure investments in small towns providing services and improving pedestrian access

Next Steps

- Regional agencies release Initial Vision Scenario February 2011
- City staff will provide report on local implications of the Initial Vision Scenario
- City staff will gather input from city council and share with regional agencies

