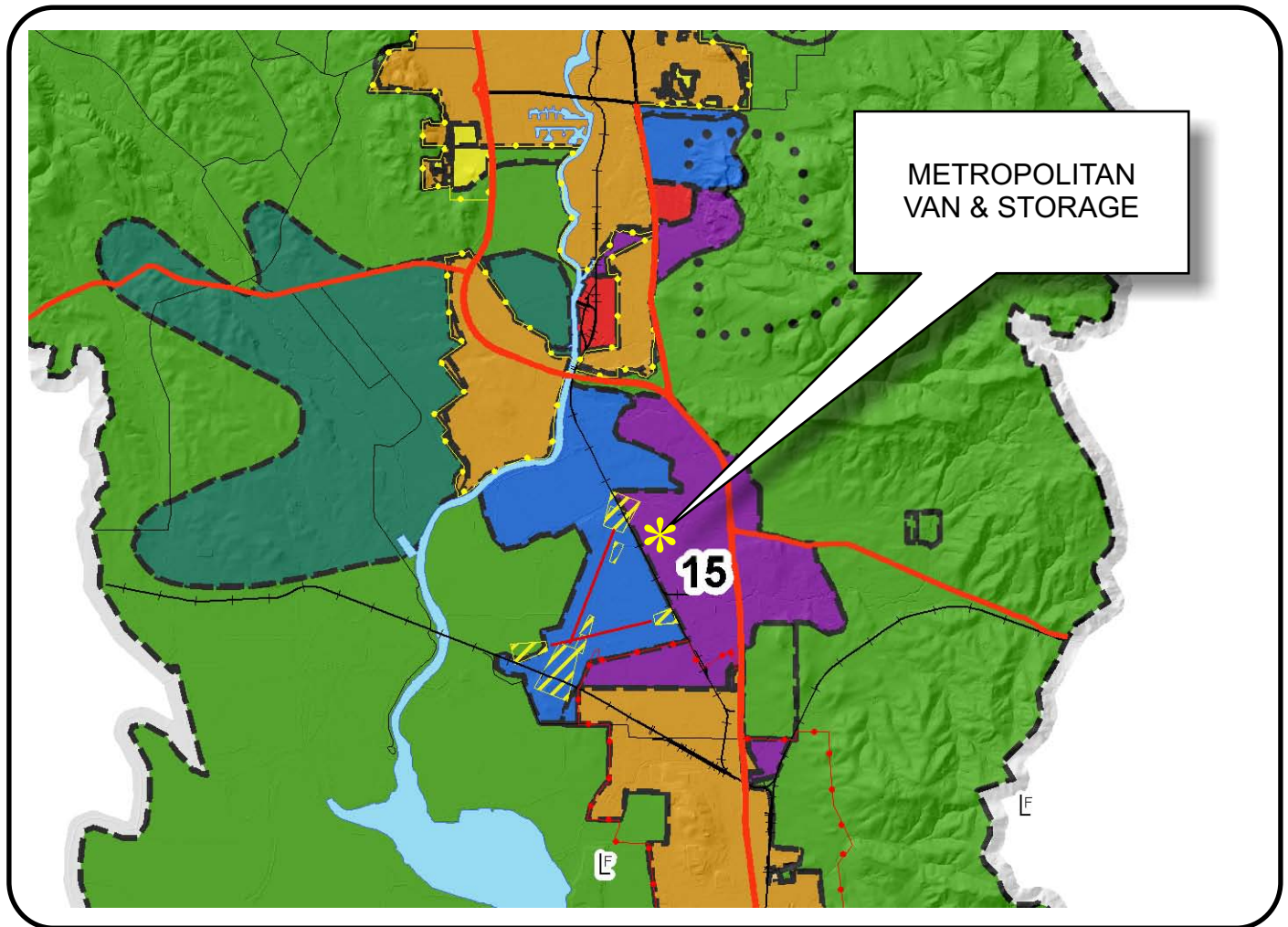


NAPA COUNTY LAND USE PLAN 2008 - 2030



LEGEND

URBANIZED OR NON-AGRICULTURAL

- Cities
- Urban Residential *
- Rural Residential *
- Industrial
- Public-Institutional
- Study Area

OPEN SPACE

- Agriculture, Watershed & Open Space
- Agricultural Resource

TRANSPORTATION

- Mineral Resource
- +

+

 Railroad
- Limited Access Highway
- Major Road
- Secondary Road
- +

+

 Airport
- Airport Clear Zone
- +

+

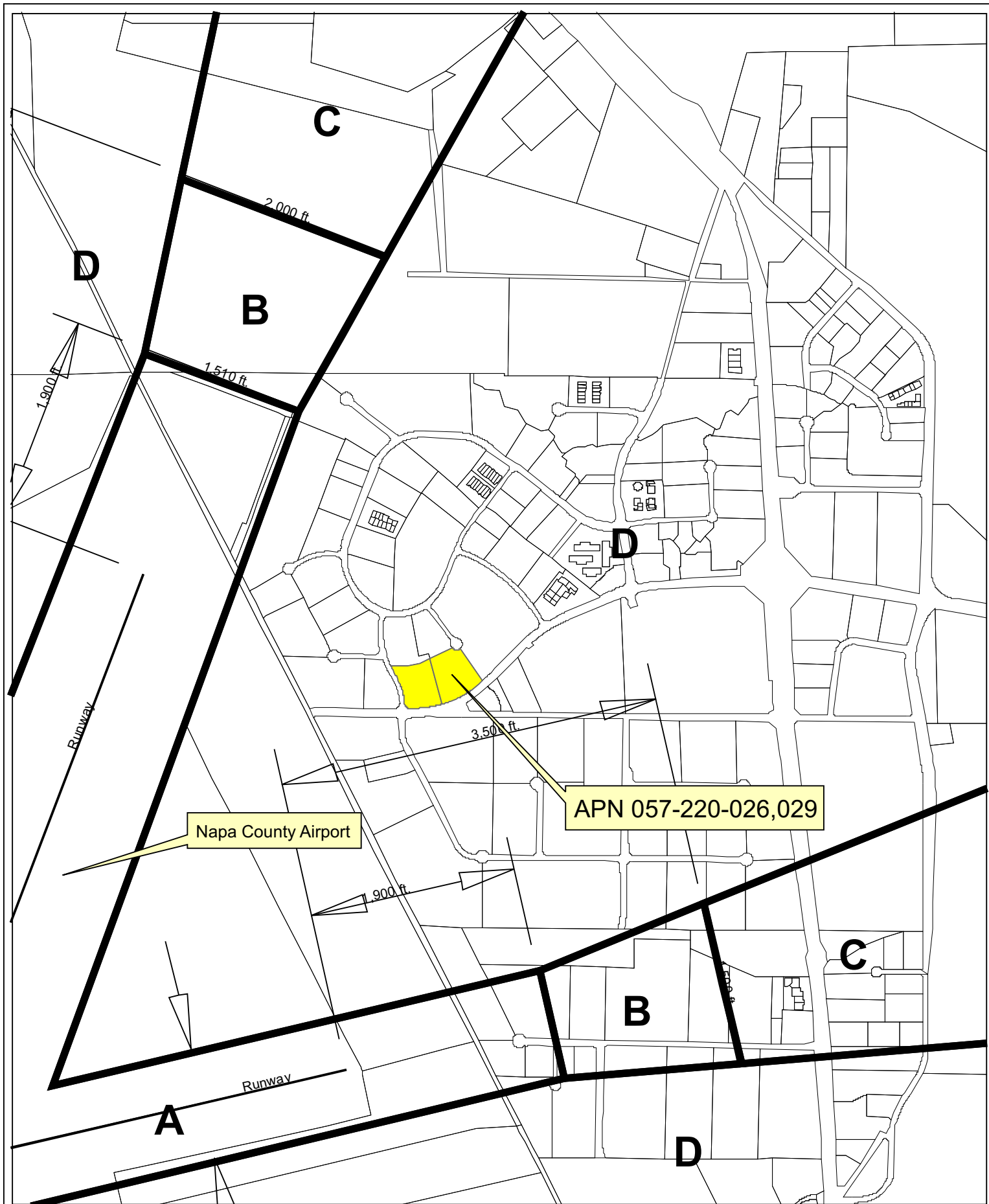
 Landfill - General Plan

* See Action Item AG/LU-114.1 regarding agriculturally zoned areas within these land use designations

APN
057-220-026,029
02-01-2011
2C UP

SCALE IN MILES
0 2





Horizontal Datum: NAD 83,
CA State Plane Coordinates,
Zone II, feet



Disclaimer: This map was prepared for informational
purposes only. No liability is assumed for the accuracy
of the data delineated hereon.

Compatibility Plan

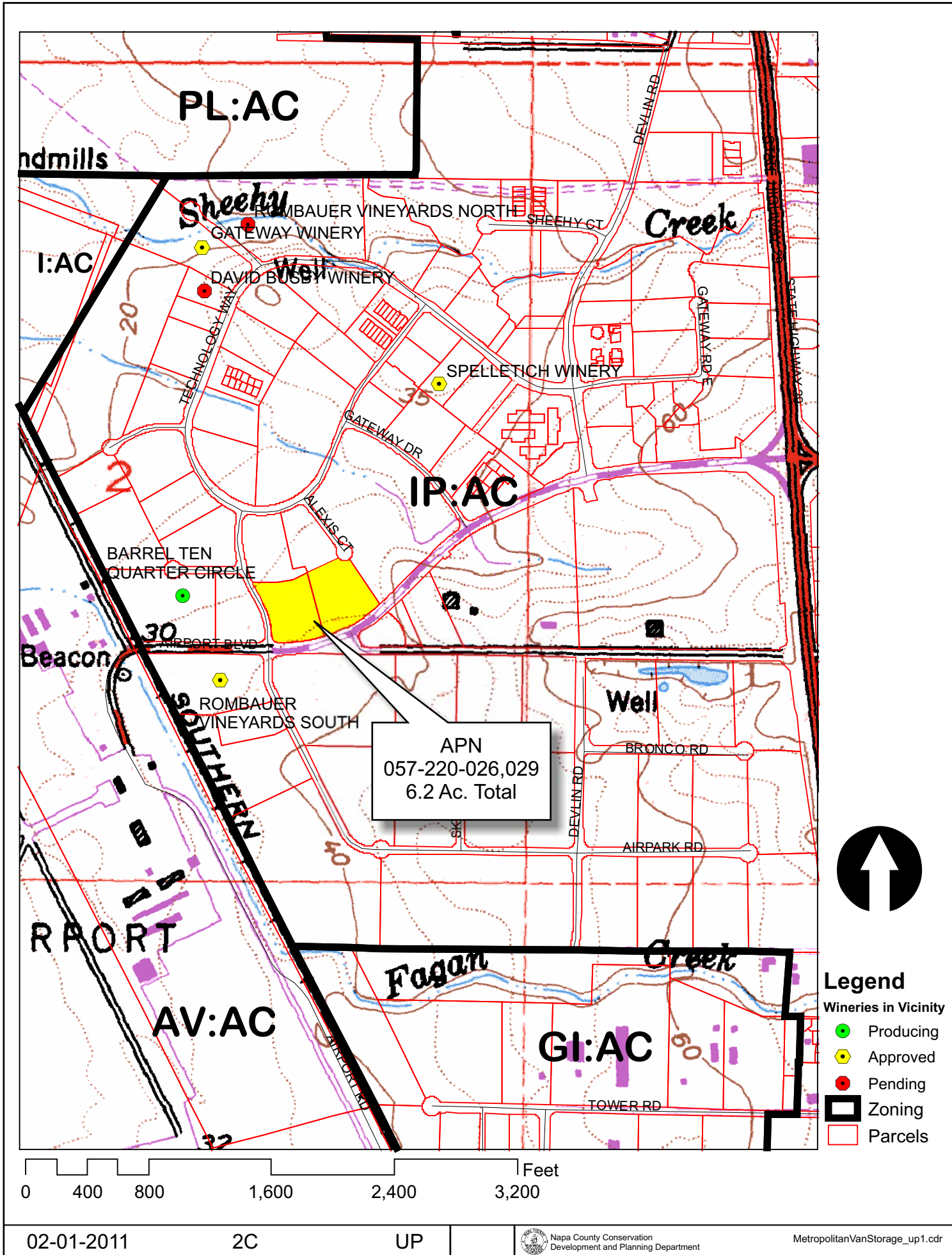
Napa County Airport



0 295 590 1,180'

Napa County Conservation Division - 12/2010

METROPOLITAN VAN & STORAGE



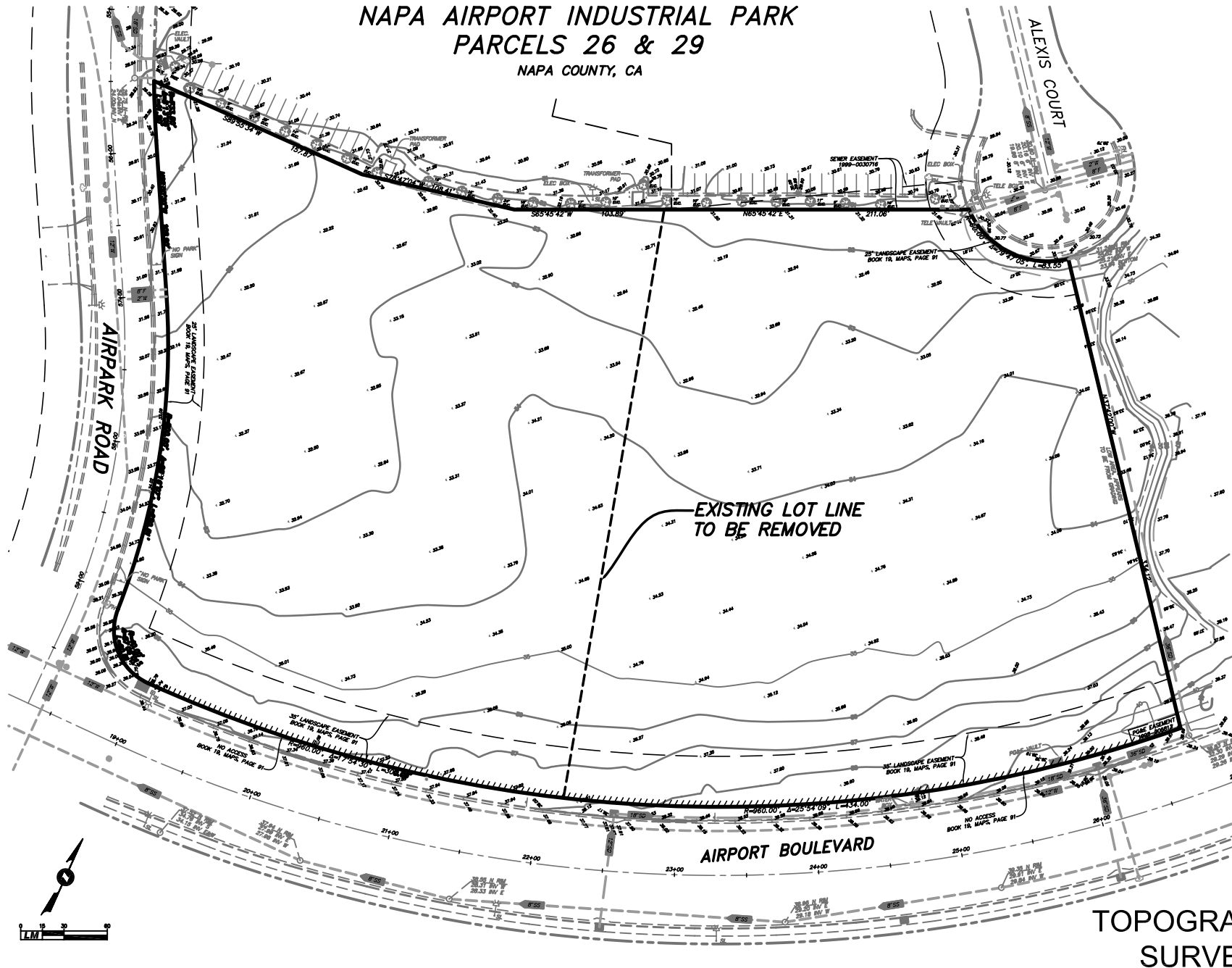
METROPOLITAN VAN & STORAGE



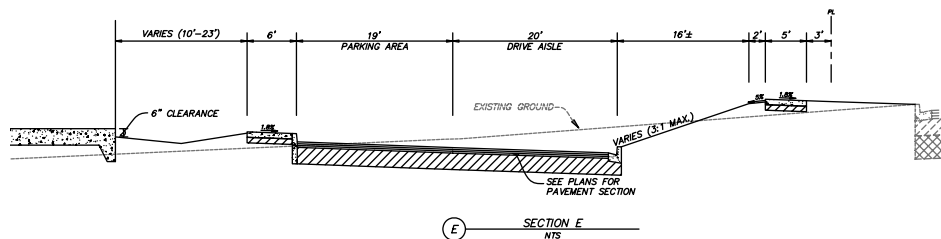
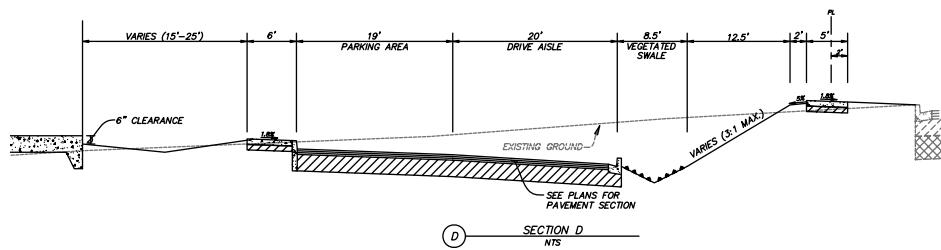
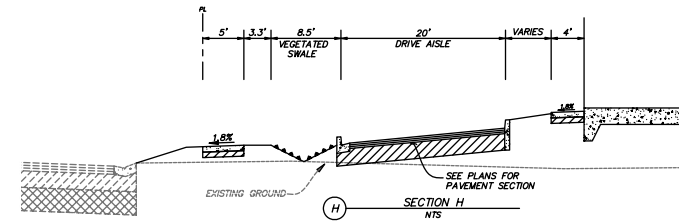
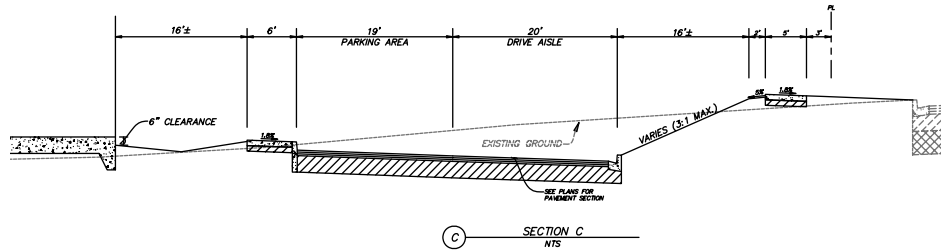
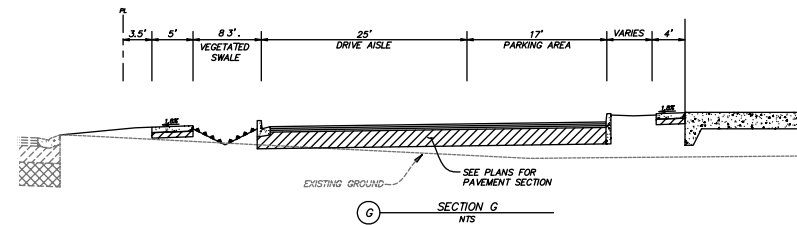
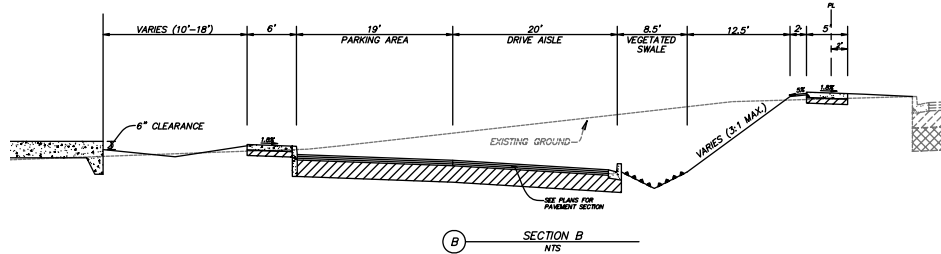
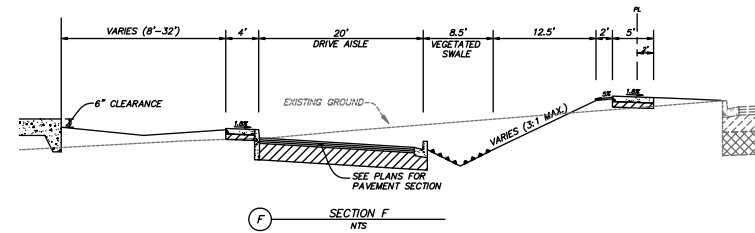
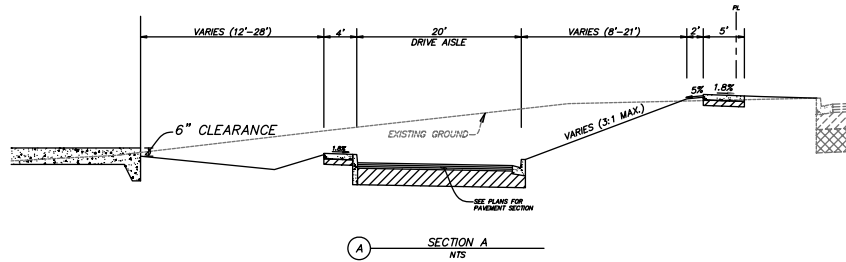
EXISTING CONDITIONS

METROPOLITAN VAN & STORAGE

PRELIMINARY IMPROVEMENT PLANS FOR NAPA AIRPORT INDUSTRIAL PARK PARCELS 26 & 29 NAPA COUNTY, CA



METROPOLITAN VAN & STORAGE

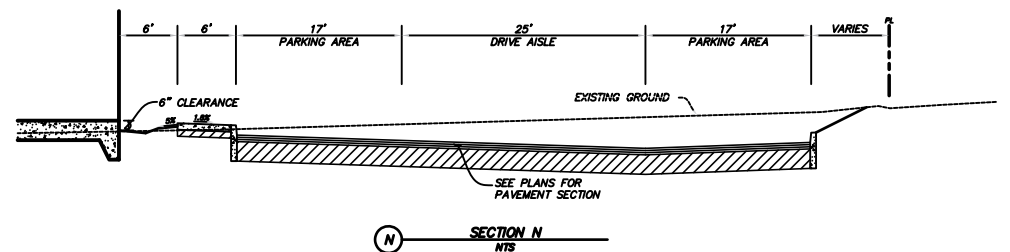
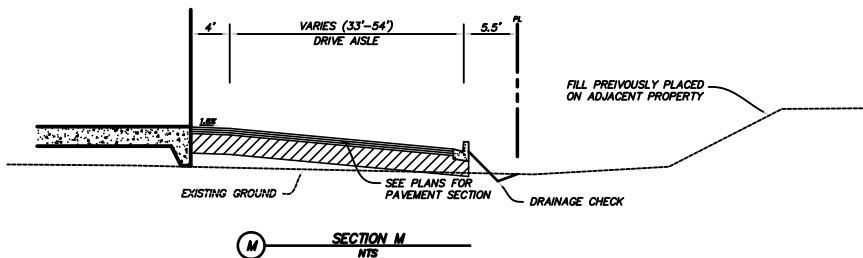
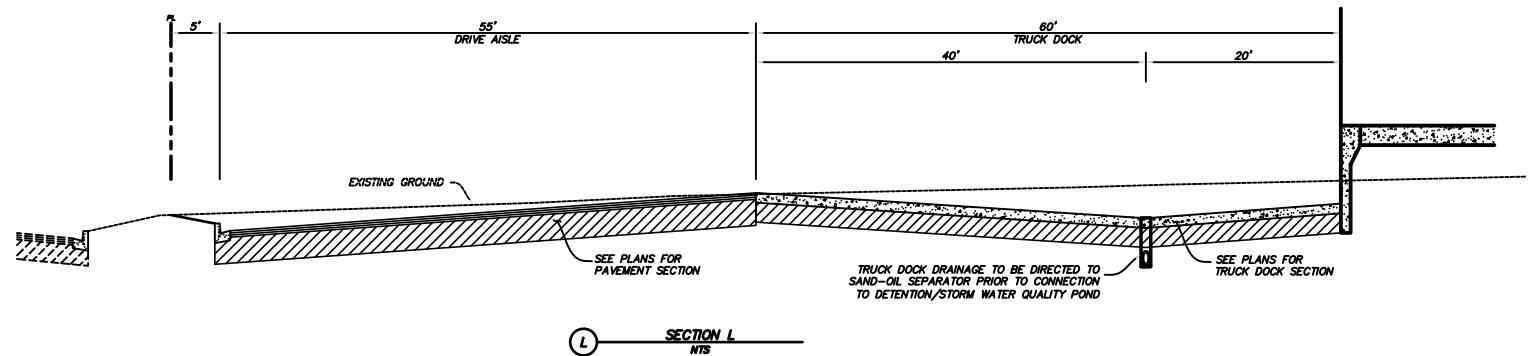
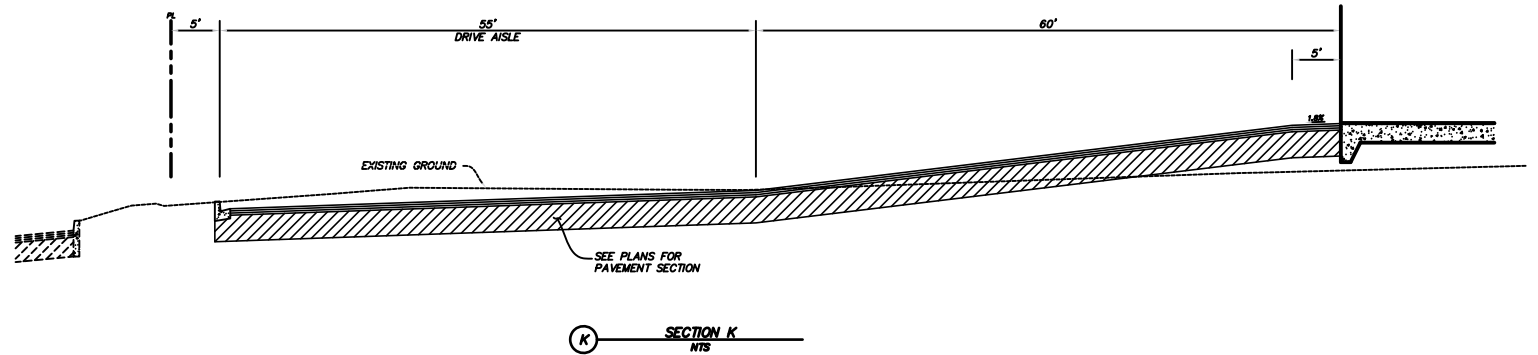
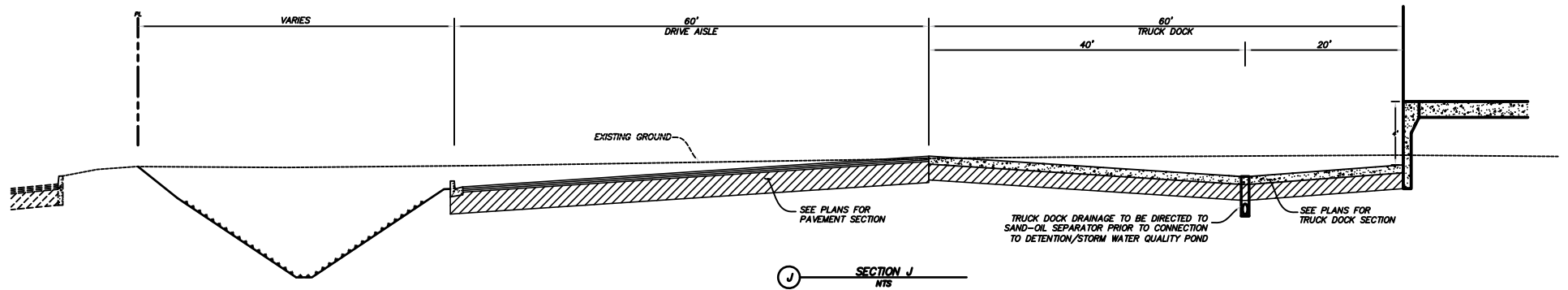


SECTION I
NTS

**LM LAUGENOUR
AND MEIKLE**
CIVIL ENGINEERING-LAND SURVEYING-PLANNING
608 COURT STREET, WOODLAND, CA 95695
P.O. Box 828, WOODLAND, CA 95776
(530) 662-1755 • www.lmce.net • info@lmce.net

CROSS SECTIONS

METROPOLITAN VAN & STORAGE



vision
function
space
culture
ideas
experience

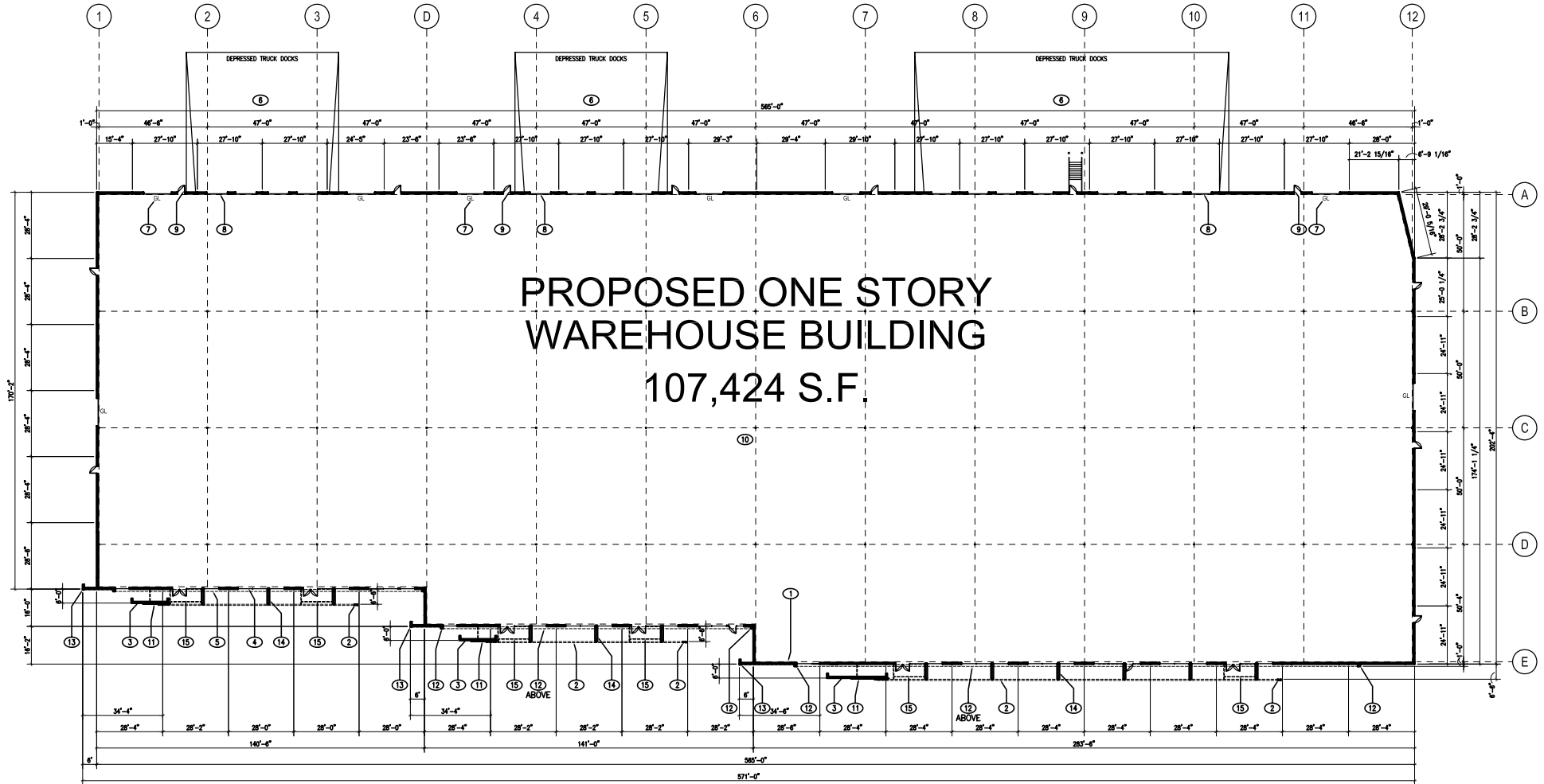
RMW

listen
build
speak
learn

architecture & interiors

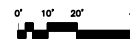


METROPOLITAN VAN & STORAGE



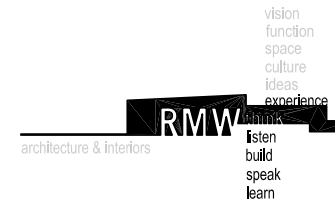
TYPICAL KEYNOTES:

- ① TYPICAL EXTERIOR WALLS TO BE TILT-UP CONCRETE WITH 3/4" X 3/4" DOUBLE CHAMFER REVEALS AND A MULTICOLOR PAINT PALLET. SEE EXTERIOR ELEVATIONS SHEET A03.1 AND ARCHITECTURAL DETAILS SHEET A03.2
- ② LINE OF ARCHITECTURAL STEEL I-BEAM ABOVE
- ③ 18' TALL X 16' WIDE (26' WIDE AT GRID 7) FREE STANDING CONCRETE PANEL WITH SIMULATED CAST-IN-PLACE FINISH TREATMENT CONSISTING OF 1/4" REVEALS AND DOWEL DVMTS. 3 TOTAL
- ④ TINTED GLAZING IN ALUMINUM FRAMES
- ⑤ LINE OF WALL ABOVE
- ⑥ DEPRESSED TRUCK DOCK
- ⑦ 12' X 14' GRADE LEVEL ROLL UP DOOR
- ⑧ 9' X 10' DOCK LEVEL ROLL UP DOOR
- ⑨ 3' X 7' STEEL MAN DOOR, WHERE DOORS ARE SHOWN AT GLAZING, DOORS TO BE STOREFRONT DOORS
- ⑩ CONCRETE BUILDING PAD
- ⑪ LINE OF COR-TEN (WEATHERED) STEEL PANEL CONSISTING OF 3' TALL BY 8' & 4' WIDE STEEL PANELS, WELDED TOGETHER. WELDS TO BE VISIBLE AND TO ALIGN WITH FREE STANDING PANEL REVEALS AND HORIZONTAL REVEALS ON THE MAIN BUILDING FACES.
- ⑫ LINE OF 12" DEEP X 12" TALL FOAM BANDING. SEE EXTERIOR ELEVATIONS.
- ⑬ LINE OF 3.5" DEEP X 8" TALL FOAM BANDING. SEE EXTERIOR ELEVATIONS.
- ⑭ 12' TALL X 6'-6" DEEP CONCRETE WING WALL PANEL WITH SIMULATED CAST-IN-PLACE FINISH TREATMENT CONSISTING OF 1/4" REVEALS AND DOWEL DVMTS. EXTERIOR LIGHT FIXTURE AT SOUTH EDGE TYPICAL. SEE EXTERIOR ELEVATIONS SHEET A03.1 AND ARCHITECTURAL DETAILS SHEET A03.2. 12 TOTAL.
- ⑮ PAINTED STEEL CANOPY ABOVE EACH PRIMARY ENTRY.

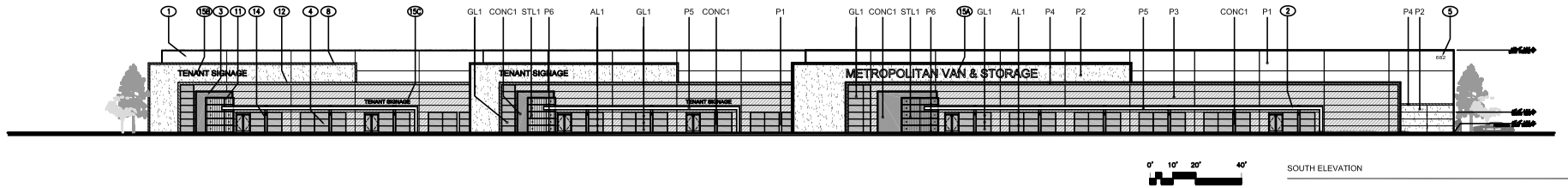


FLOOR PLAN

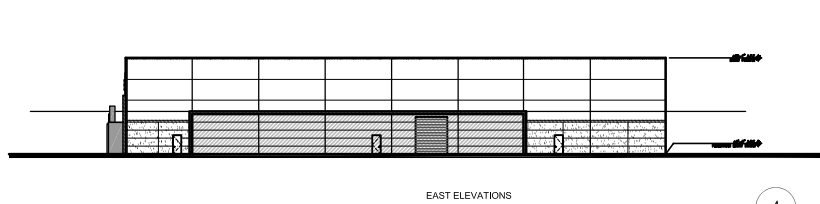
1



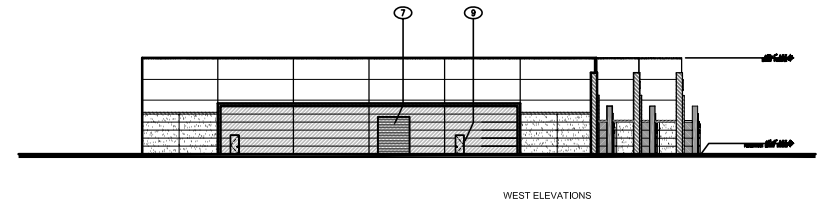
METROPOLITAN VAN & STORAGE



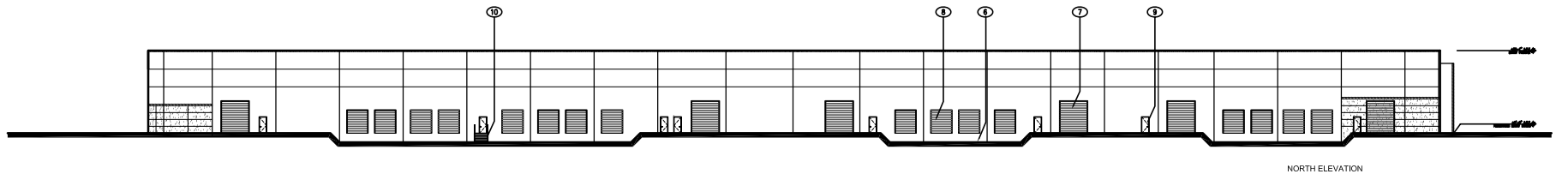
1



4



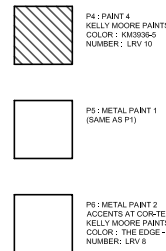
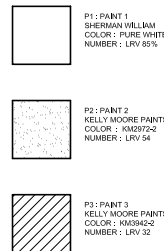
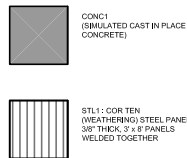
2



3

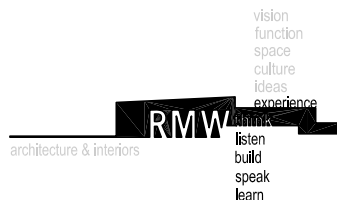
FINISH LEGEND :

PLEASE NOTE: ALL BUILDING AND SITE SIGNAGE DEPICTED WITHIN THESE DOCUMENTS IS SHOW FOR REFERENCE ONLY. ALL SIGNAGE TO BE SUBMITTED AS PART OF A COMPREHENSIVE SIGN PROGRAM DOCUMENT SUBJECT TO FINAL REVIEW AND APPROVAL BY THE NAPA COUNTY PLANNING DEPARTMENT.

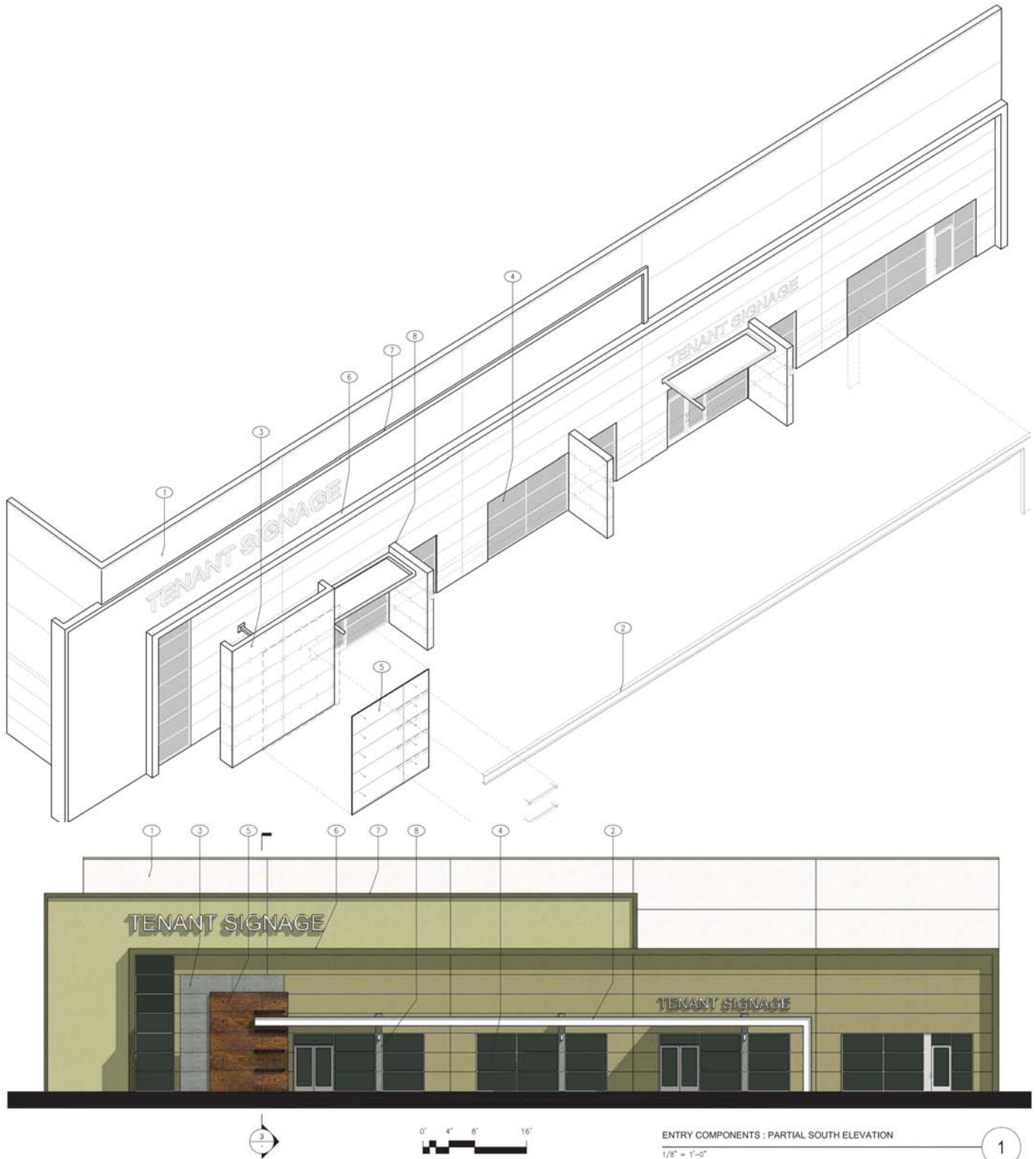


TYPICAL KEYNOTES:

- ① TYPICAL EXTERIOR WALLS TO BE TILT-UP CONCRETE WITH 3/4" X 3/4" DOUBLE CHAMFER REVEALS AND A MULTICOLOR PAINT PALLET. SEE EXTERIOR ELEVATIONS SHEET A03.1 AND ARCHITECTURAL DETAILS SHEET A03.2
- ② ARCHITECTURAL STEEL I-BEAM
- ③ 18" TALL X 16" WIDE (26" WIDE AT GRID 7) FREE STANDING CONCRETE PANEL WITH SIMULATED CAST-IN-PLACE FINISH TREATMENT CONSISTING OF 1/4" REVEALS AND DOWEL DIVTS. 3 TOTAL.
- ④ TINTED GLAZING IN ALUMINUM FRAMES
- ⑤ BUILDING ADDRESS SIGNAGE
- ⑥ DEPRESSED TRUCK DOCK
- ⑦ 12' X 14' GRADE LEVEL ROLL UP DOOR
- ⑧ 9' X 10' DOCK LEVEL ROLL UP DOOR
- ⑨ 3' X 7' STEEL MAN DOOR, WHERE DOORS ARE SHOWN AT GLAZING, DOORS TO BE STOREFRONT DOORS
- ⑩ METAL STAIRS AT DEPRESSED TRUCK DOCK
- ⑪ LINE OF COR-TEN (WEATHERED) STEEL PANEL CONSISTING OF 3' TALL BY 8' & 4' WIDE STEEL PANELS, WELDED TOGETHER, WELDS TO BE VISIBLE AND TO ALIGN WITH FREE STANDING PANEL REVEALS AND HORIZONTAL REVEALS ON THE MAIN BUILDING FACES.
- ⑫ LINE OF 12" DEEP X 12" TALL FOAM BANDING. SEE EXTERIOR ELEVATIONS.
- ⑬ LINE OF 3.5" DEEP X 8" TALL FOAM BANDING. SEE EXTERIOR ELEVATIONS.
- ⑭ 12' TALL X 6'-6" DEEP CONCRETE WING WALL PANEL WITH SIMULATED CAST-IN-PLACE FINISH TREATMENT CONSISTING OF 1/4" REVEALS AND DOWEL DIVTS. EXTERIOR LIGHT FIXTURE AT SOUTH EDGE TYPICAL. SEE EXTERIOR ELEVATIONS SHEET A03.1 AND ARCHITECTURAL DETAILS SHEET A03.2. 12 TOTAL.
- ⑮ PROPOSED LOCATION OF TENANT SIGNAGE (FOR REFERENCE ONLY) - HALO LIGHTING
A: 1'-9" TALL; B: 1'-6"; C: 1'-2"



METROPOLITAN VAN & STORAGE



ENTRY COMPONENTS : PARTIAL SOUTH ELEVATION

1/8" = 1'-0"

1

TYPICAL KEYNOTES:

- ① TYPICAL EXTERIOR WALLS TO BE TILT-UP CONCRETE WITH 3/4" X 3/4" DOUBLE CHAMFER REVEALS AND A MULTICOLOR PAINT PALLET. SEE EXTERIOR ELEVATIONS SHEET A03.1 AND ARCHITECTURAL DETAILS SHEET A03.2
- ② ARCHITECTURAL STEEL I-BEAM
- ③ 18' TALL X 16' WIDE (26' WIDE AT GRID 7) FREE STANDING CONCRETE PANEL WITH SIMULATED CAST-IN-PLACE FINISH TREATMENT CONSISTING OF 1/4" REVEALS AND DOWEL DIMTS. 3 TOTAL.
- ④ TINTED GLAZING IN ALUMINUM FRAMES
- ⑤ COR-TEN (WEATHERED) STEEL PANEL CONSISTING OF 3' TALL BY 8' & 4' WIDE STEEL PANELS, WELDED TOGETHER, WELDS TO BE VISIBLE AND TO ALIGN WITH FREE STANDING PANEL REVEALS AND HORIZONTAL REVEALS ON THE MAIN BUILDING FACES.
- ⑥ LINE OF 12" DEEP X 12" TALL FOAM BANDING. SEE EXTERIOR ELEVATIONS.
- ⑦ LINE OF 3.5" DEEP X 8" TALL FOAM BANDING. SEE EXTERIOR ELEVATIONS.
- ⑧ 12' TALL X 6'-6" DEEP CONCRETE WING WALL PANEL WITH SIMULATED CAST-IN-PLACE FINISH TREATMENT CONSISTING OF 1/4" REVEALS AND DOWEL DIMTS. EXTERIOR LIGHT FIXTURE AT SOUTH EDGE TYPICAL. SEE EXTERIOR ELEVATIONS SHEET A03.1. 12 TOTAL.

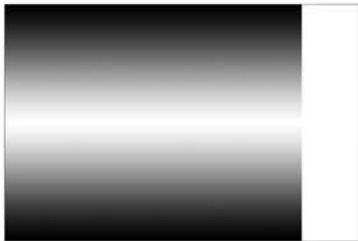
vision
function
space
culture
ideas
experience
RMW
listen
build
speak
learn

architecture & interiors

METROPOLITAN VAN & STORAGE



GL1 : EXTERIOR GLAZING 1



AL1 :
ALUMINUM
MULLIONS



P1 : PAINT 1



P2 : PAINT 2



P3 : PAINT 3



CONC1: SIMULATED CAST IN PLACE FINISH:



STL1: COR-TEN STEEL:



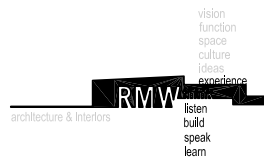
P4 : PAINT 4



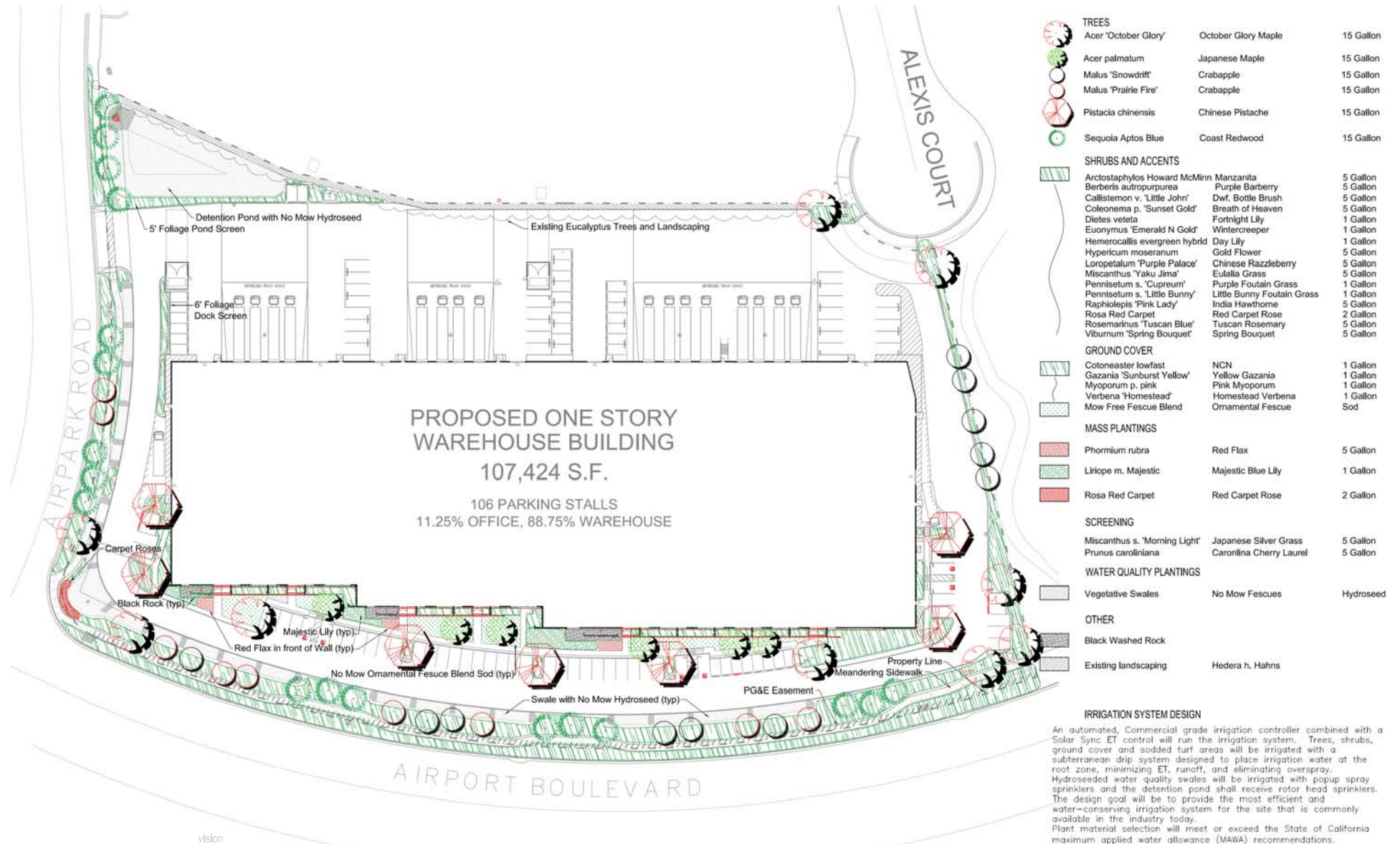
P5 : PAINT 5



P6 : PAINT 6



METROPOLITAN VAN & STORAGE



vision
function
space
culture
ideas
experience
think
listen
build
speak
learn

RMW

architecture & interiors