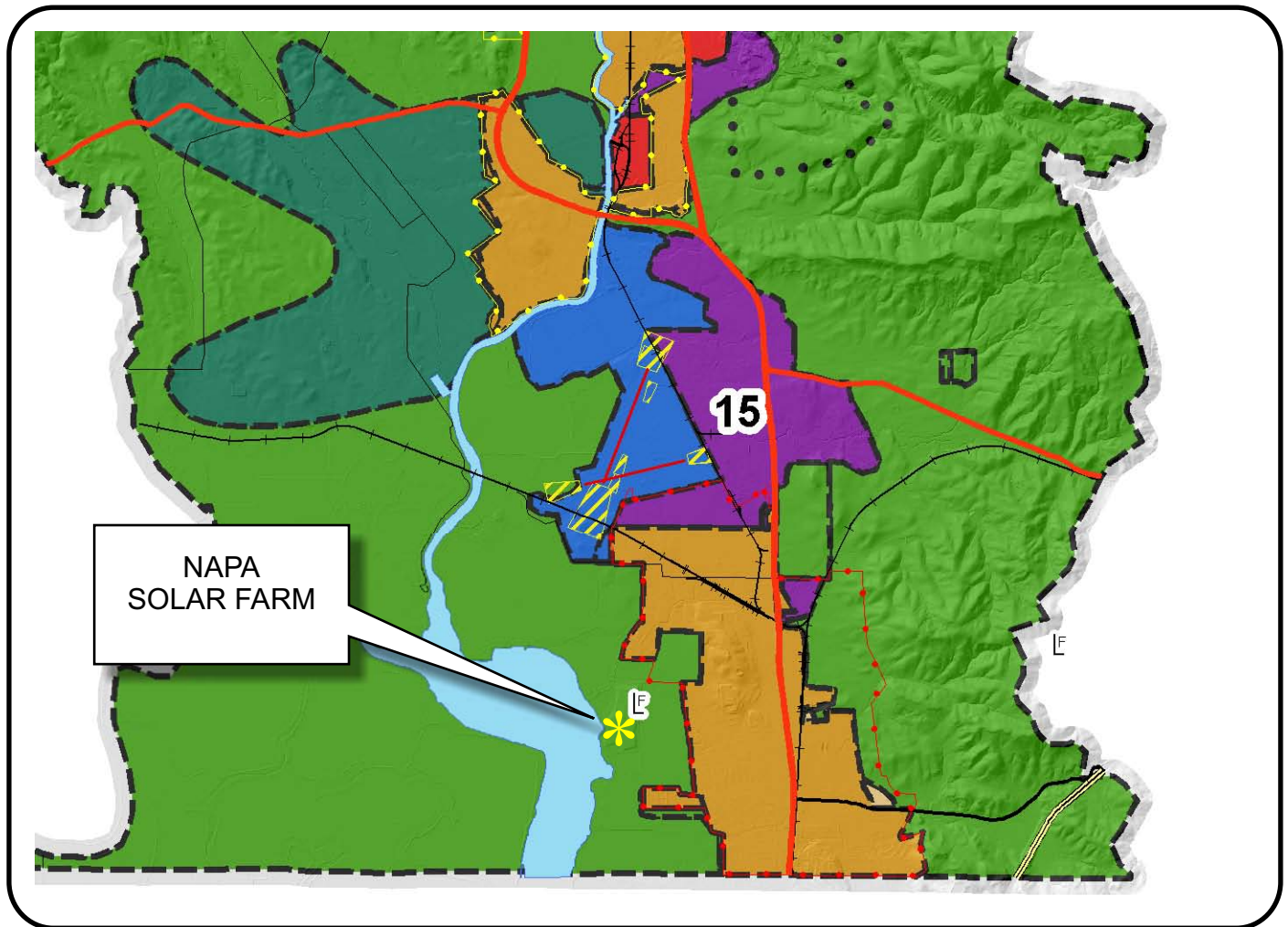


# NAPA COUNTY LAND USE PLAN 2008 - 2030



## LEGEND

### URBANIZED OR NON-AGRICULTURAL

- Cities
- Urban Residential \*
- Rural Residential \*
- Industrial
- Public-Institutional
- Study Area

### OPEN SPACE

- Agriculture, Watershed & Open Space
- Agricultural Resource

### TRANSPORTATION

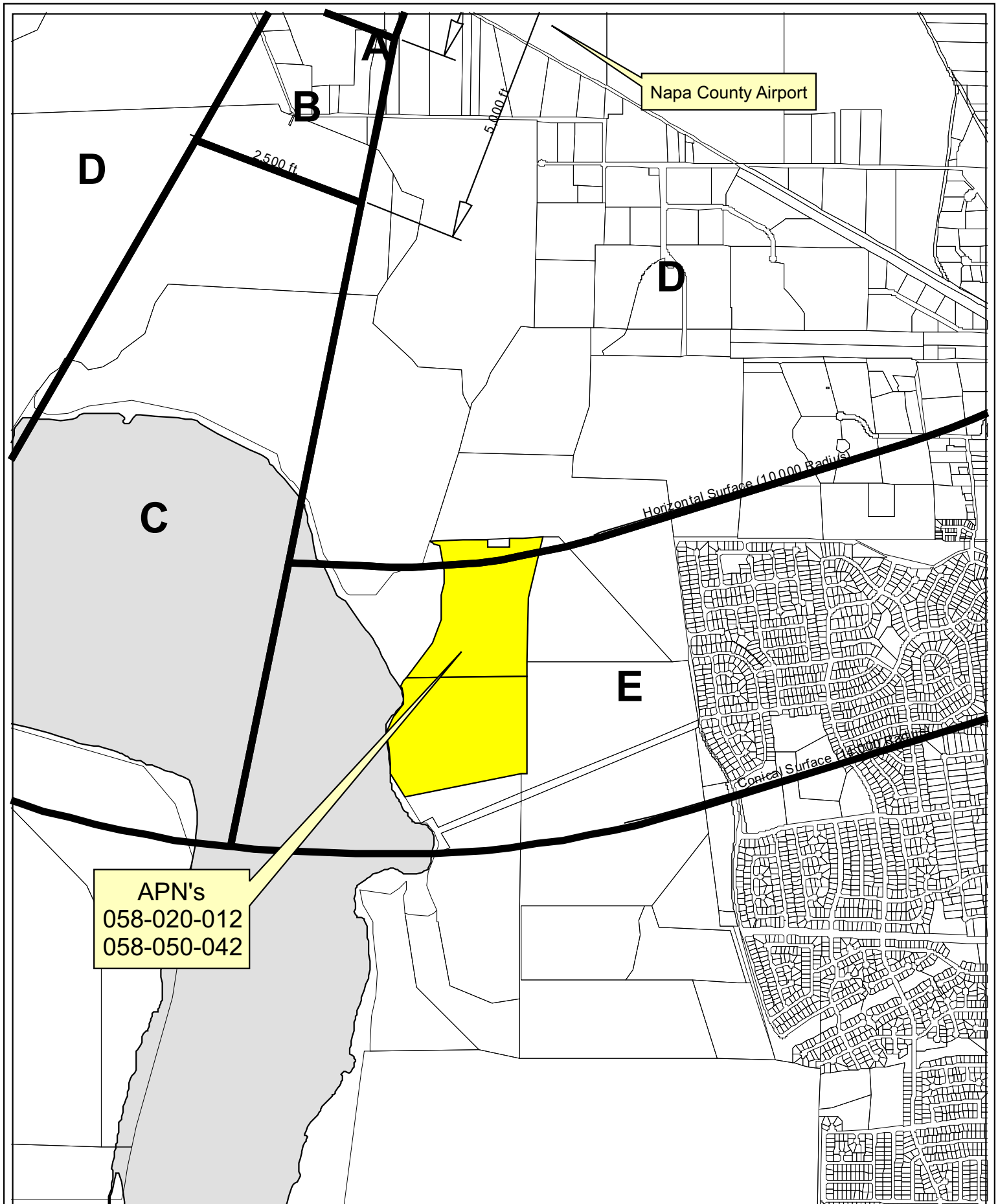
- Mineral Resource
- Railroad
- Limited Access Highway
- Major Road
- Secondary Road
- Airport
- Airport Clear Zone
- Landfill - General Plan

\* See Action Item AG/LU-114.1 regarding agriculturally zoned areas within these land use designations

APN  
058-020-012  
058-050-042  
06-29-2010  
1C UP

SCALE IN MILES  
0 2





Horizontal Datum: NAD 83,  
CA State Plane Coordinates,  
Zone II, feet

Disclaimer: This map was prepared for informational  
purposes only. No liability is assumed for the accuracy  
of the data delineated hereon.

## Compatibility Plan Napa County Airport

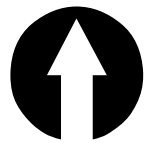
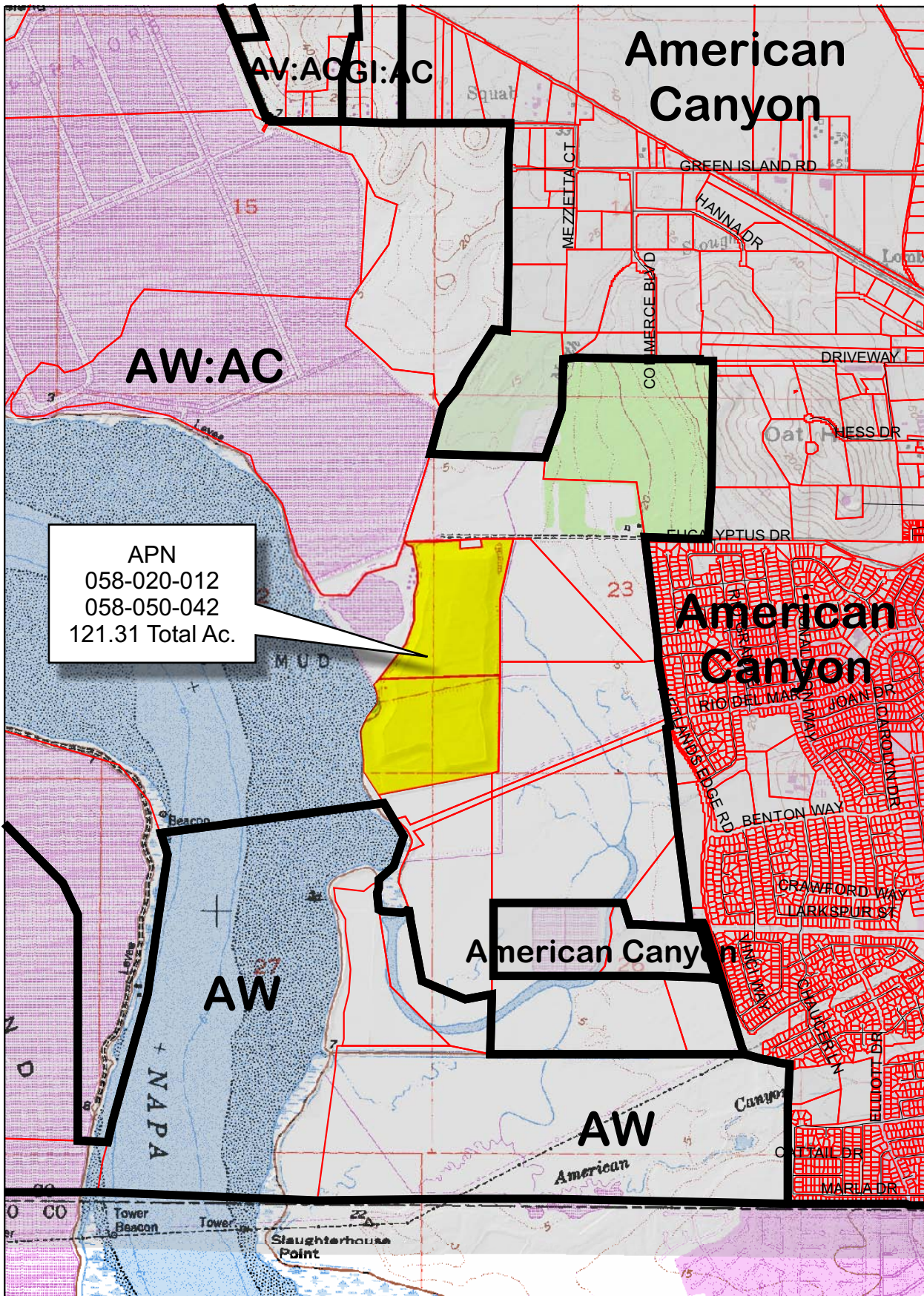


0 450 900 1,800'

Napa County Conservation Division - 08/2009



# NAPA SOLAR FARM



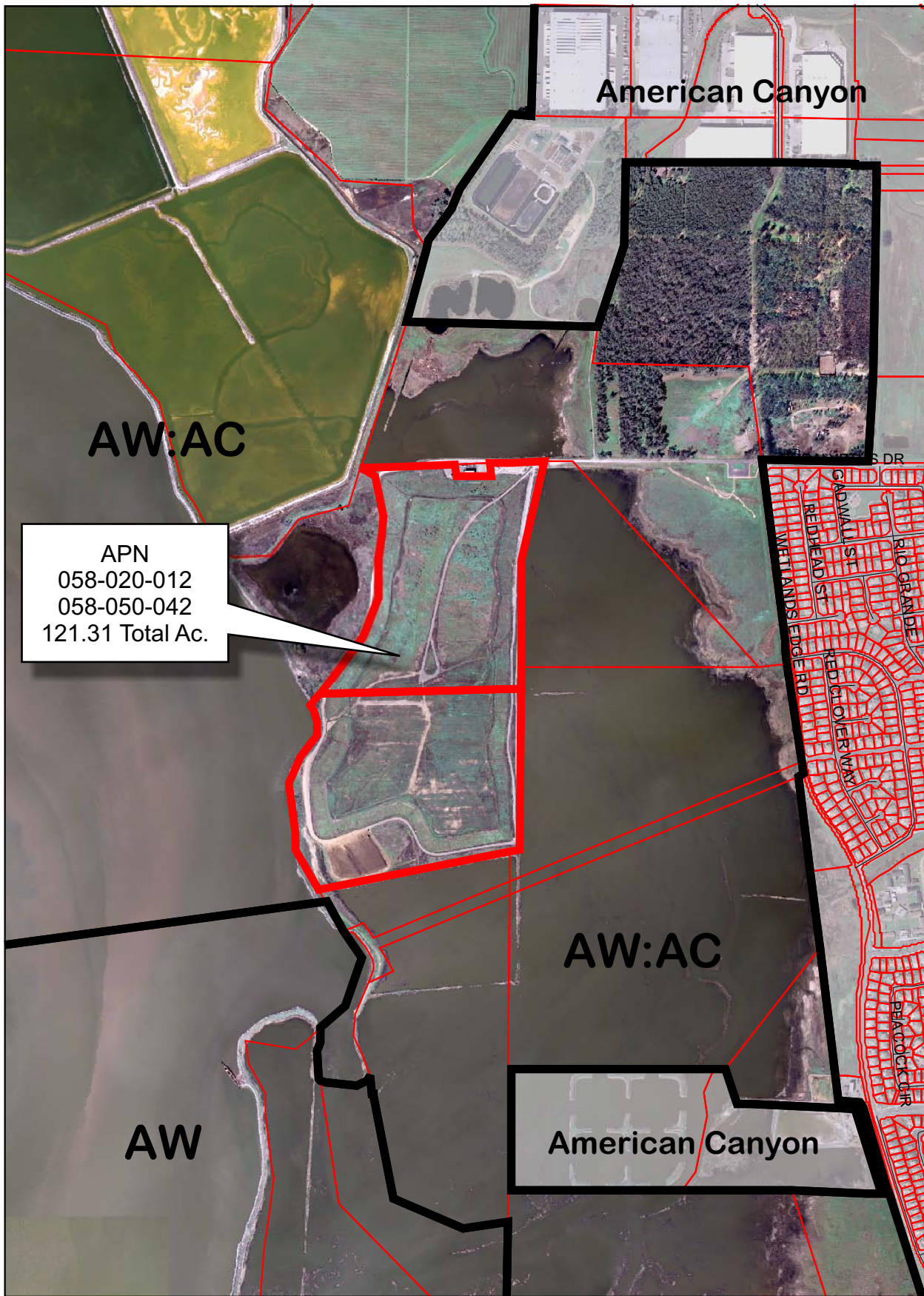
## Legend

- Wineries in Vicinity
- Producing
  - Approved
  - Pending
  - Zoning
  - Parcels

0 1,000 2,000 4,000 6,000 8,000 Feet



# NAPA SOLAR FARM

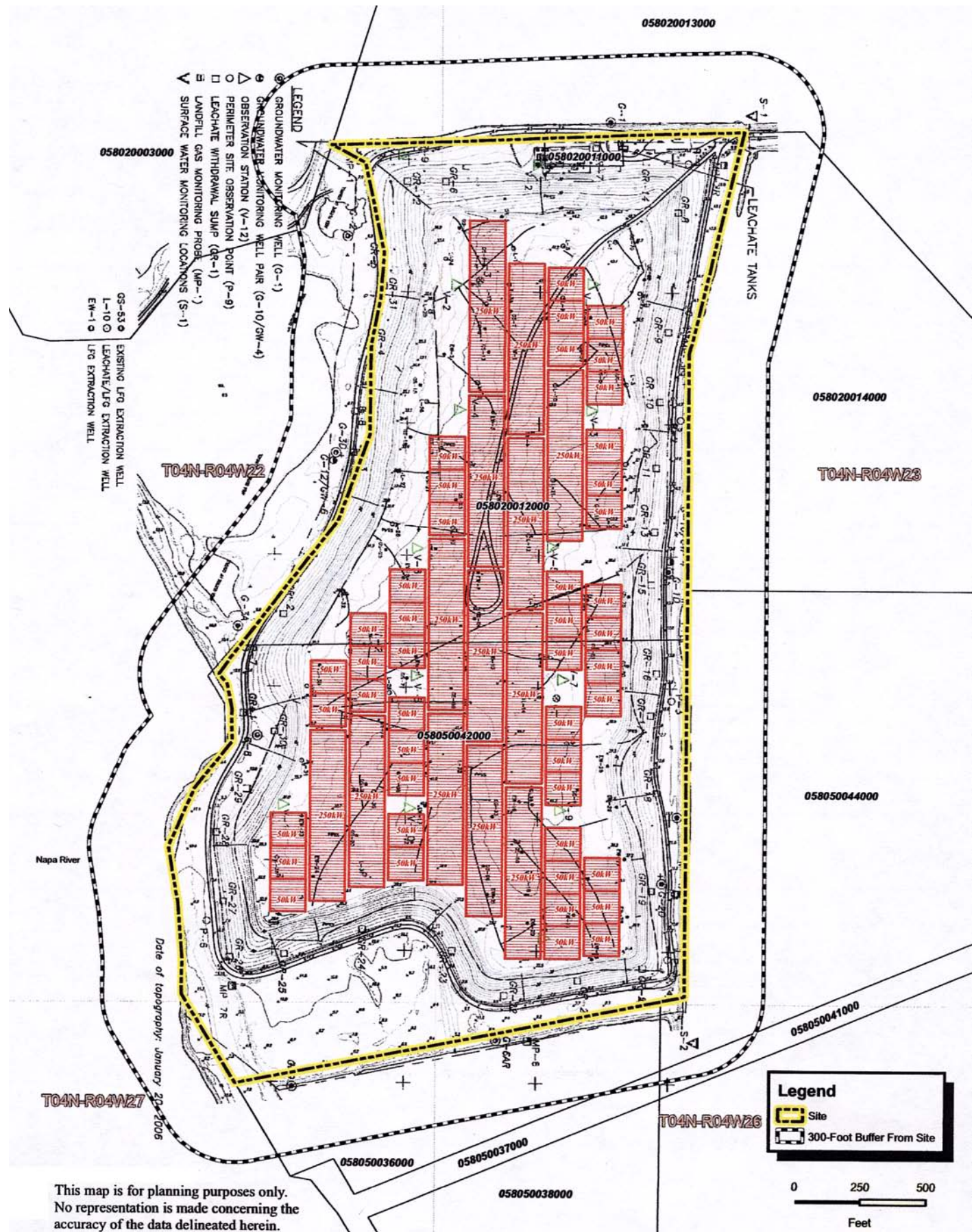


## Legend

- Wineries in Vicinity
- Producing
  - Approved
  - Pending
  - Zoning
  - Parcels



# NAPA SOLAR FARM



# ORIGINAL SITE PLAN - A



# NAPA SOLAR FARM



ORIGINAL SITE PLAN - B



# NAPA SOLAR FARM



REVISED SITE PLAN



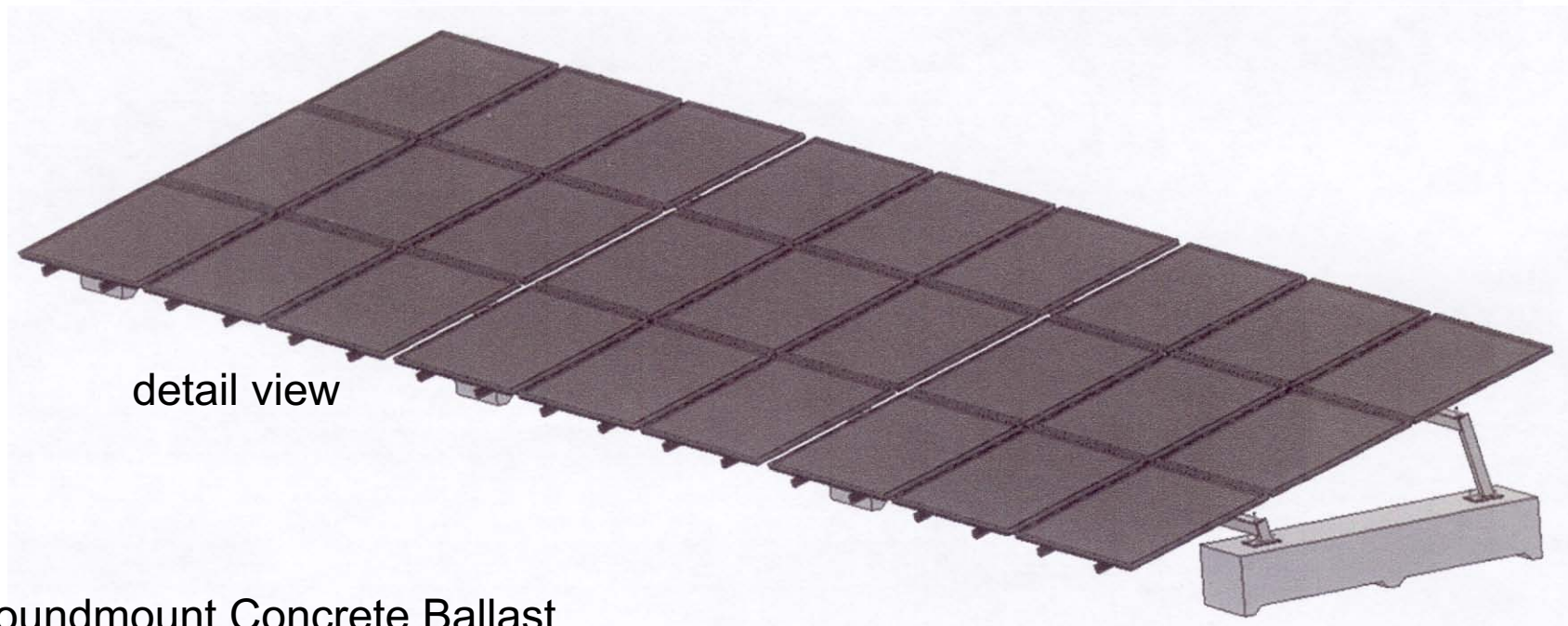
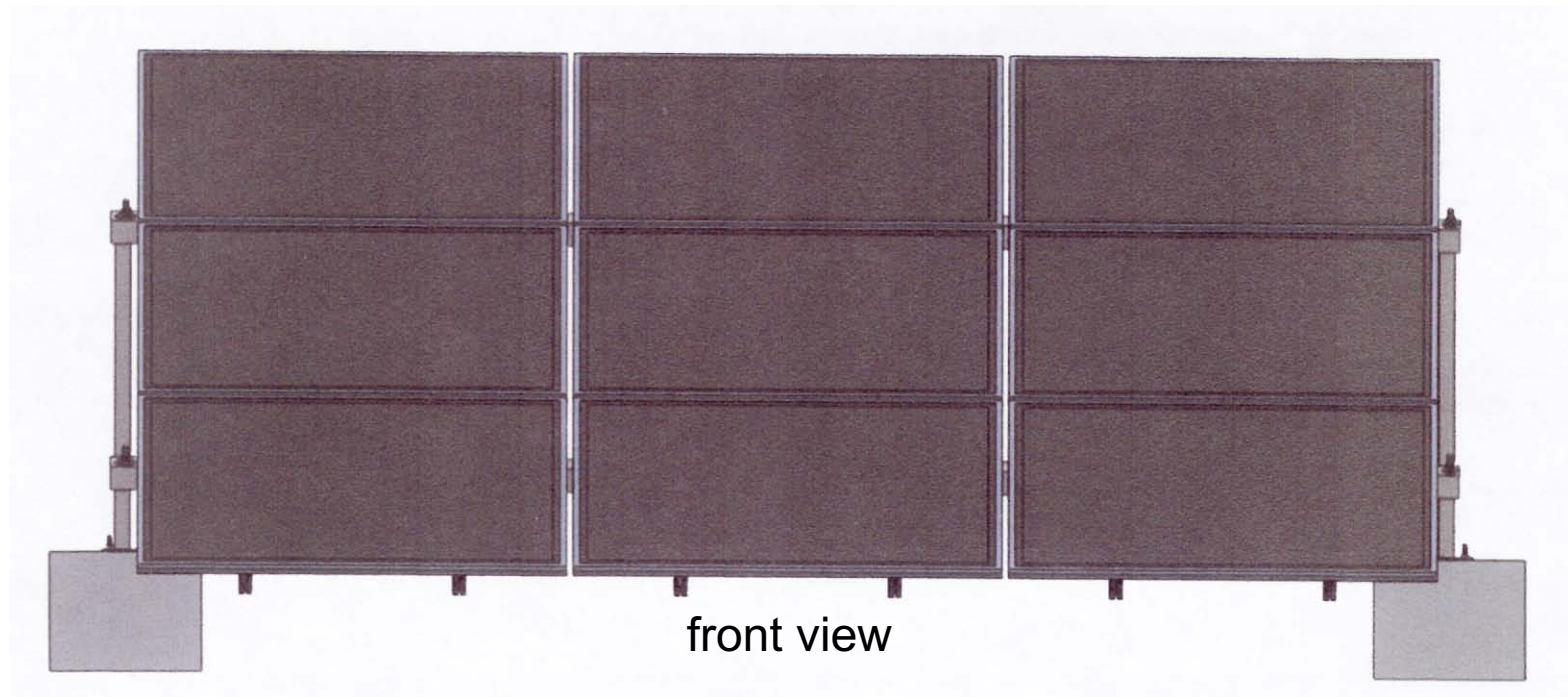
# NAPA SOLAR FARM

7:02PM Google Earth View Simulation





# NAPA SOLAR FARM



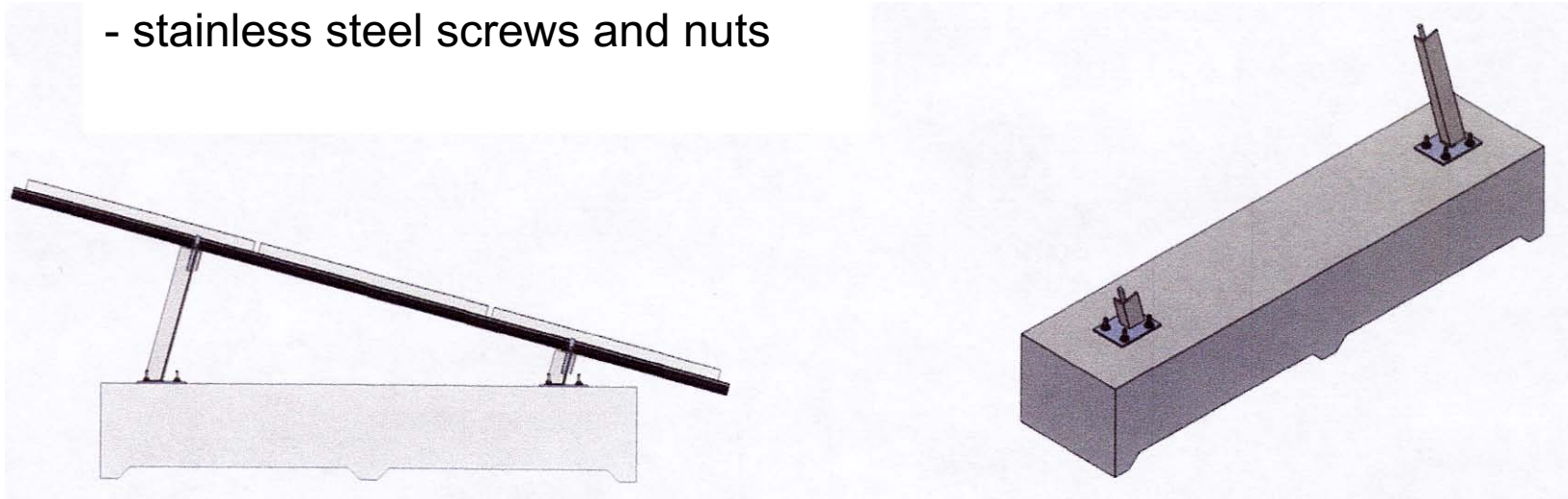
ezGroundmount Concrete Ballast



## ezGroundmount Concrete Ballast

### Concrete-Block Design 15 degree

- Concrete Block as part of the racking and ballasting at the same time
- Various tilt angles possible. For project: 30 degree will be used
- Very fast installation and system set-up
- No foundation necessary, just place concrete block
- Racking components
  - aluminum profiles
  - galvanized steel profiles / stanchions
  - stainless steel screws and nuts

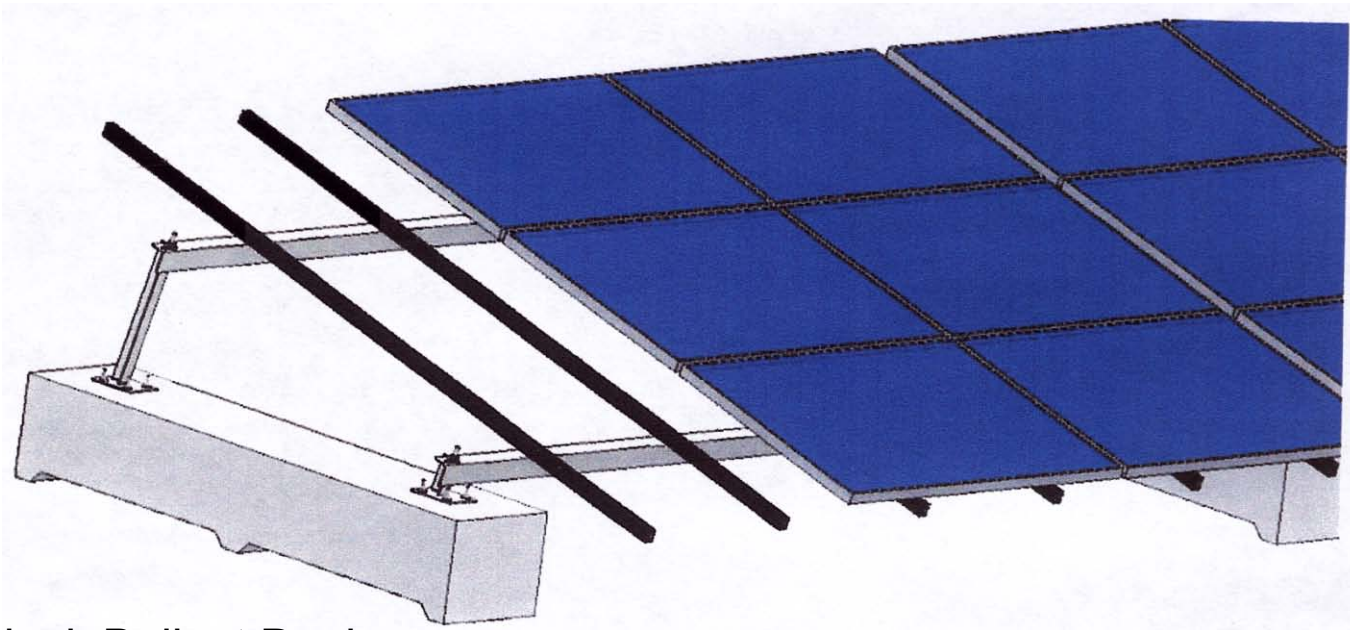
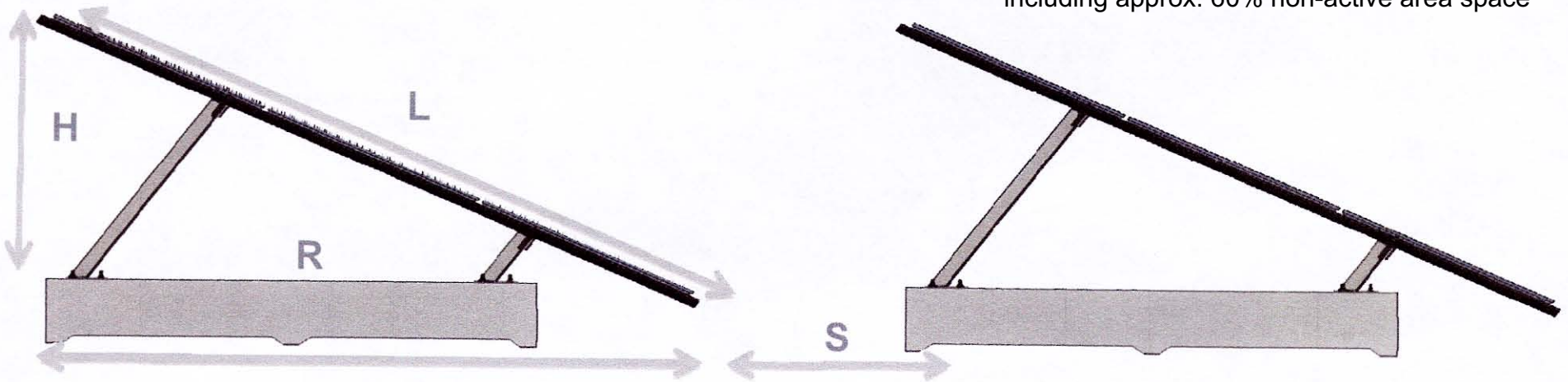




## ezGroundmount Concrete Ballast

Row distance calculation

System uses approx. 11.5 acres  
including approx. 60% non-active area space



Option 1

Concrete-Block Ballast Design