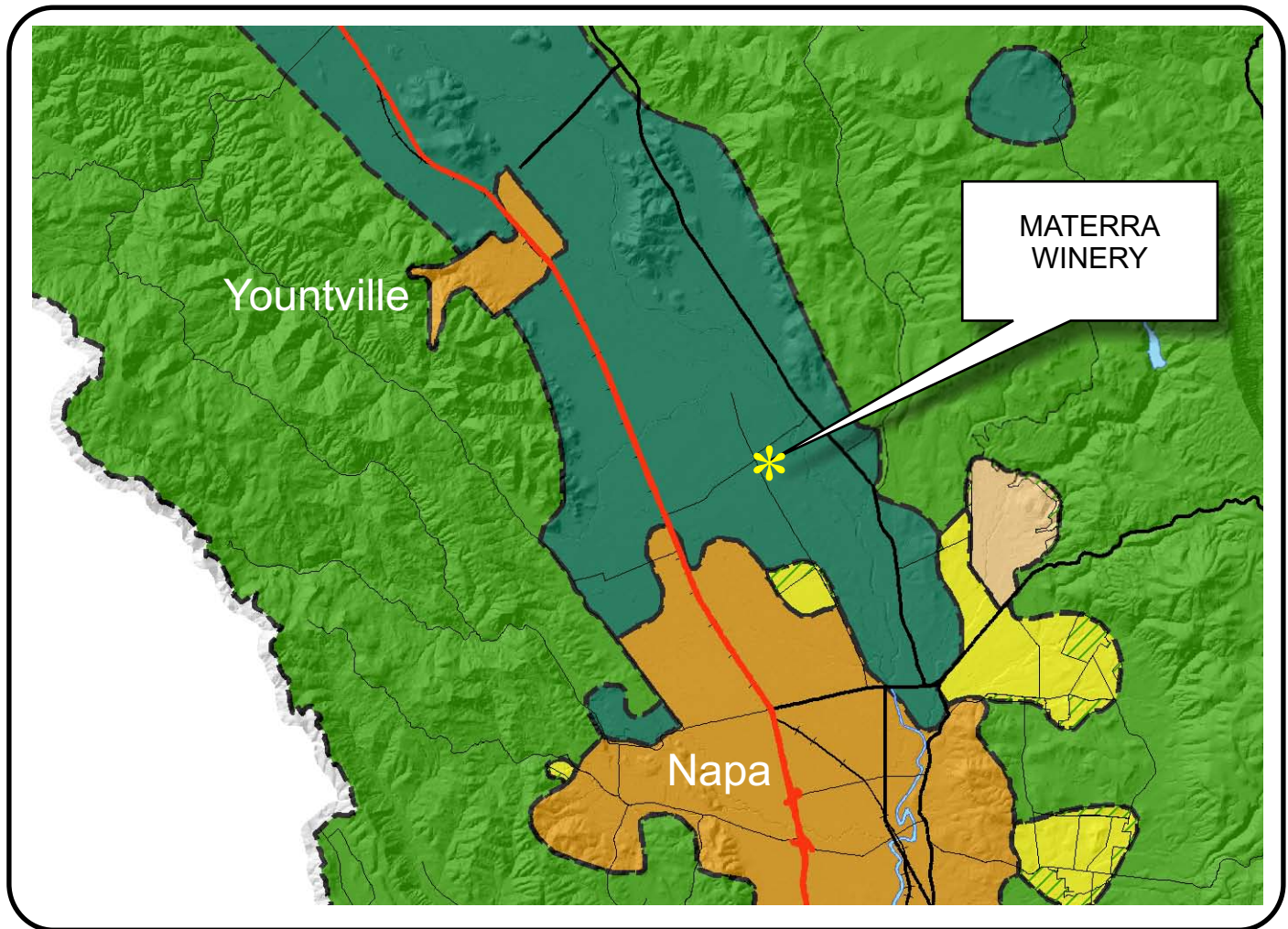


NAPA COUNTY LAND USE PLAN 2008 - 2030



LEGEND

URBANIZED OR NON-AGRICULTURAL

- Cities
- Urban Residential *
- Rural Residential *
- Industrial
- Public-Institutional
- Study Area

OPEN SPACE

- Agriculture, Watershed & Open Space
- Agricultural Resource

TRANSPORTATION

- Mineral Resource
- Railroad
- Limited Access Highway
- Major Road
- Secondary Road
- Airport
- Airport Clear Zone
- Landfill - General Plan

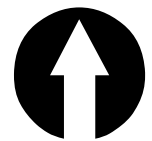
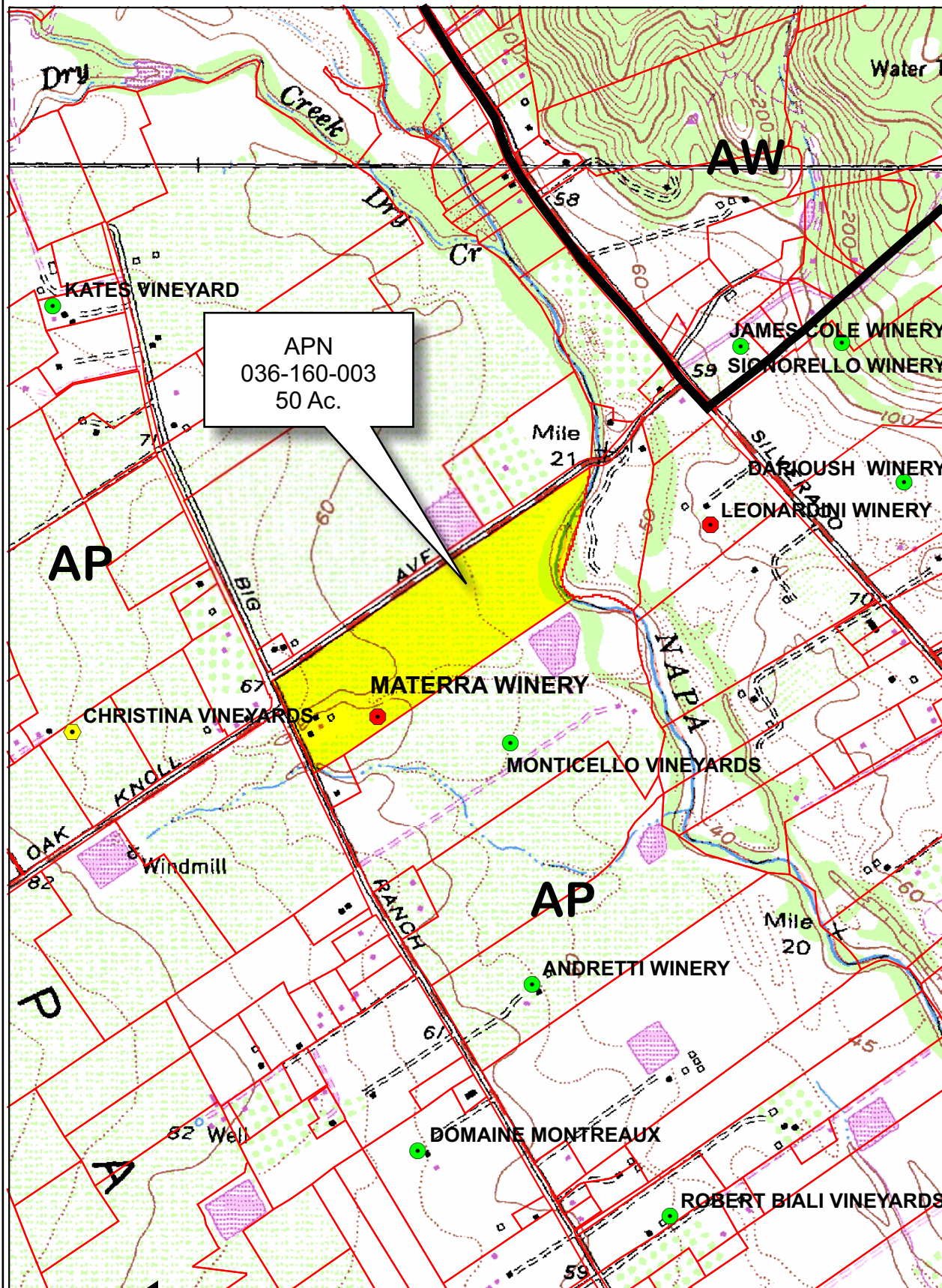
* See Action Item AG/LU-114.1 regarding agriculturally zoned areas within these land use designations

APN
036-160-003
10-28-2008
6D UP

SCALE IN MILES
0 2



CUNAT / MATERRA WINERY

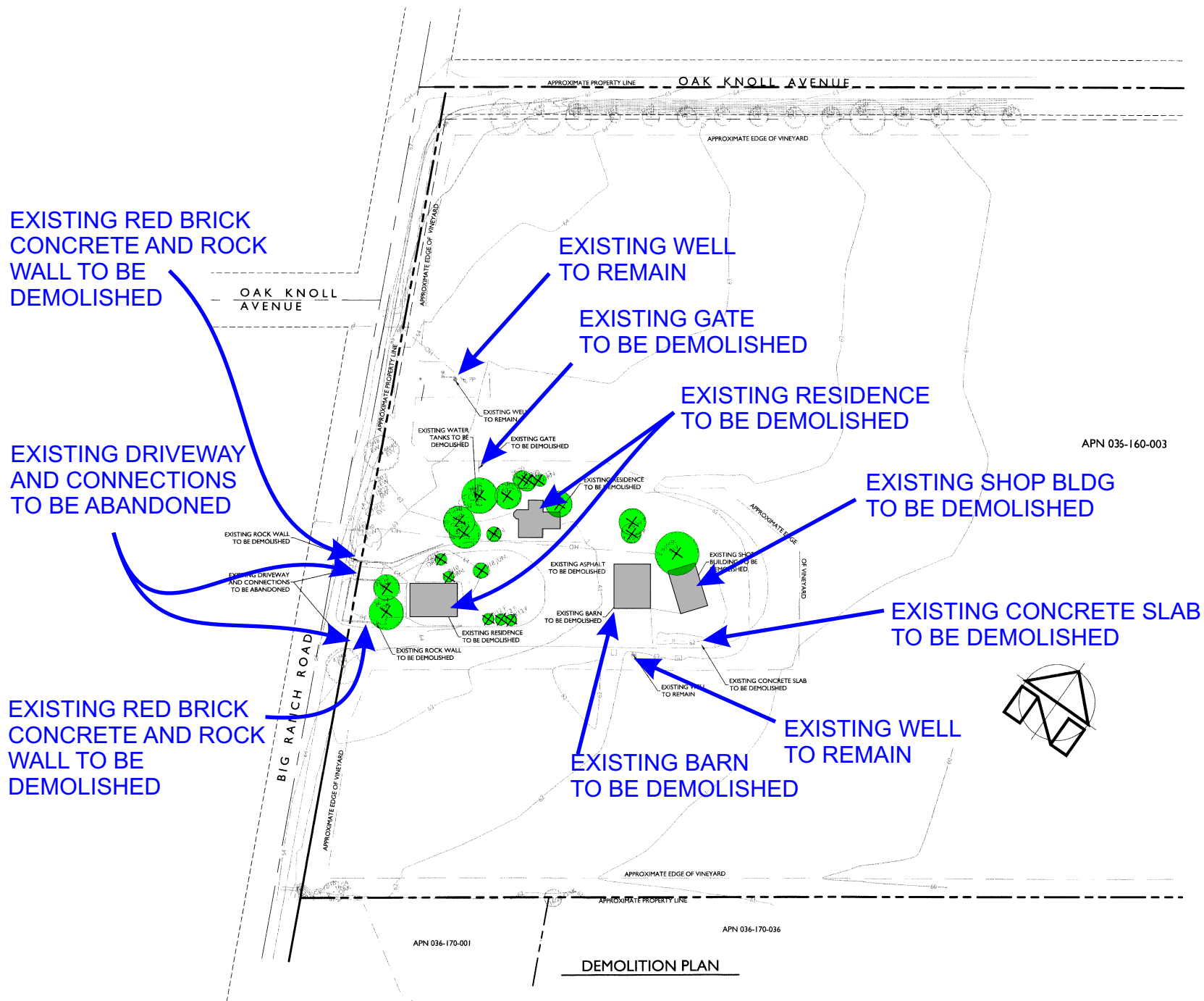


Legend

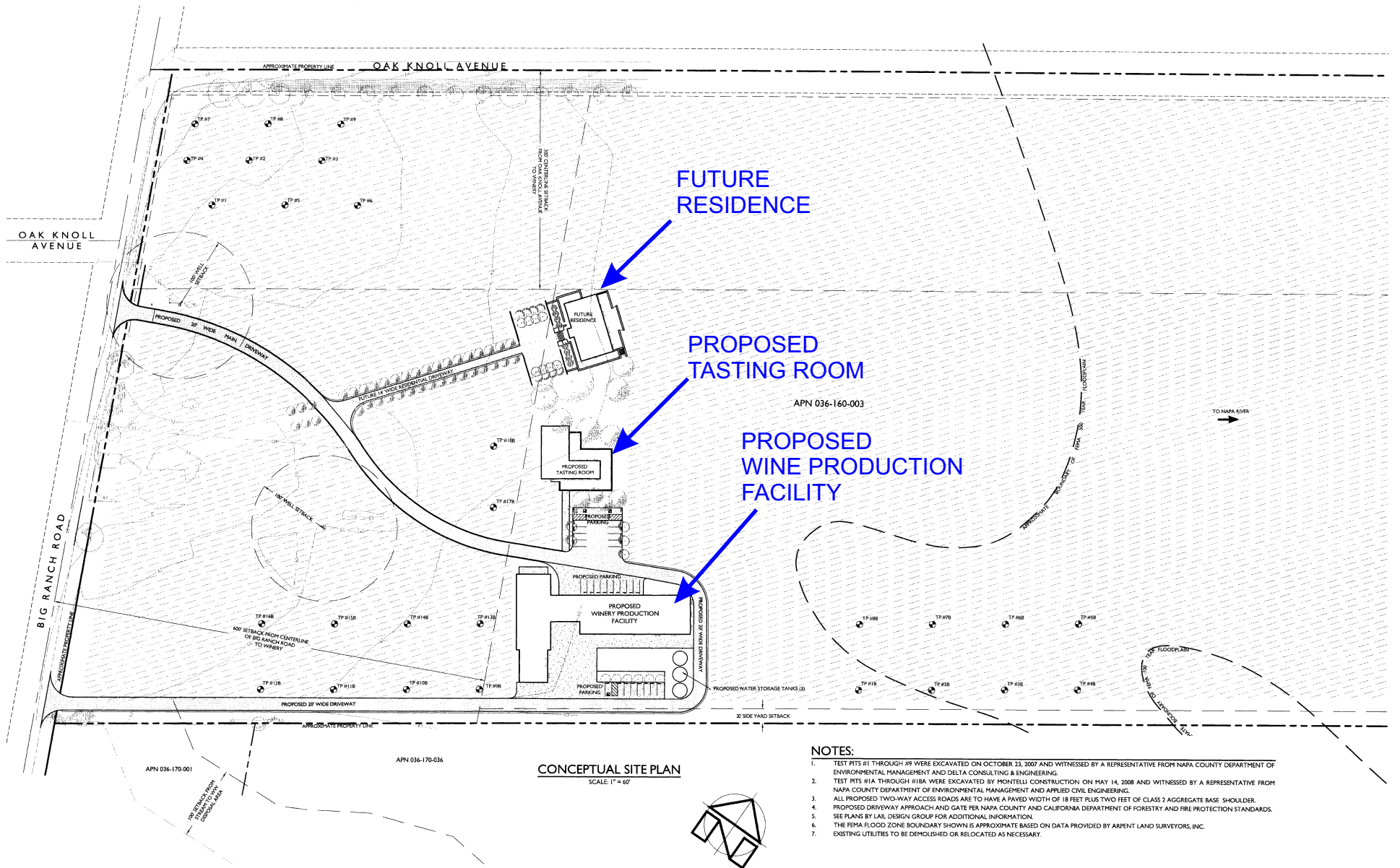
- Wineries in Vicinity
- Producing
- Approved
- Pending
- Zoning
- Parcels

0 600 1,200 2,400 3,600 4,800 Feet

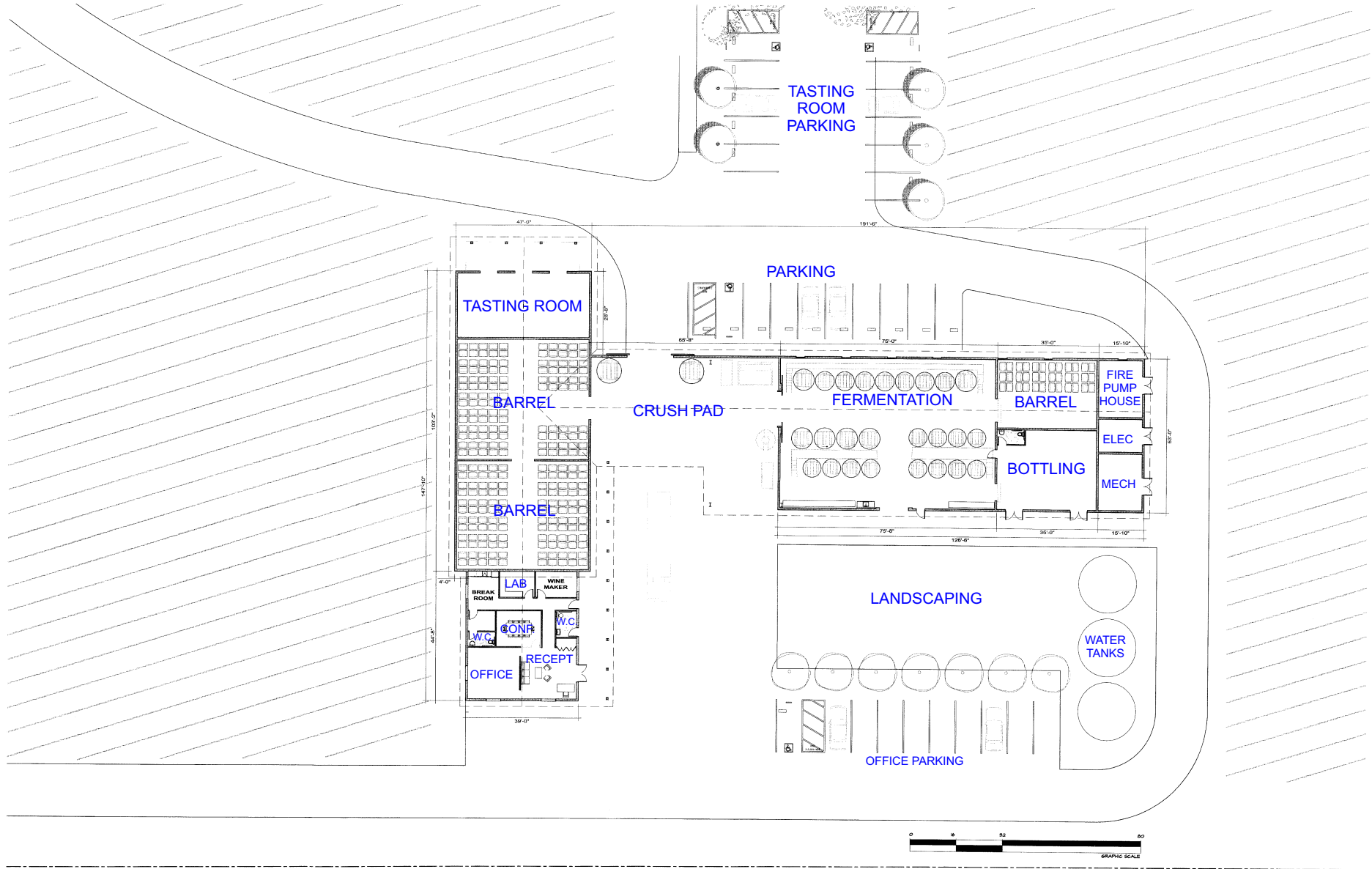
CUNAT / MATERRA WINERY



CUNAT / MATERRA WINERY



CUNAT / MATERRA WINERY



1 WINERY - FLOOR PLAN

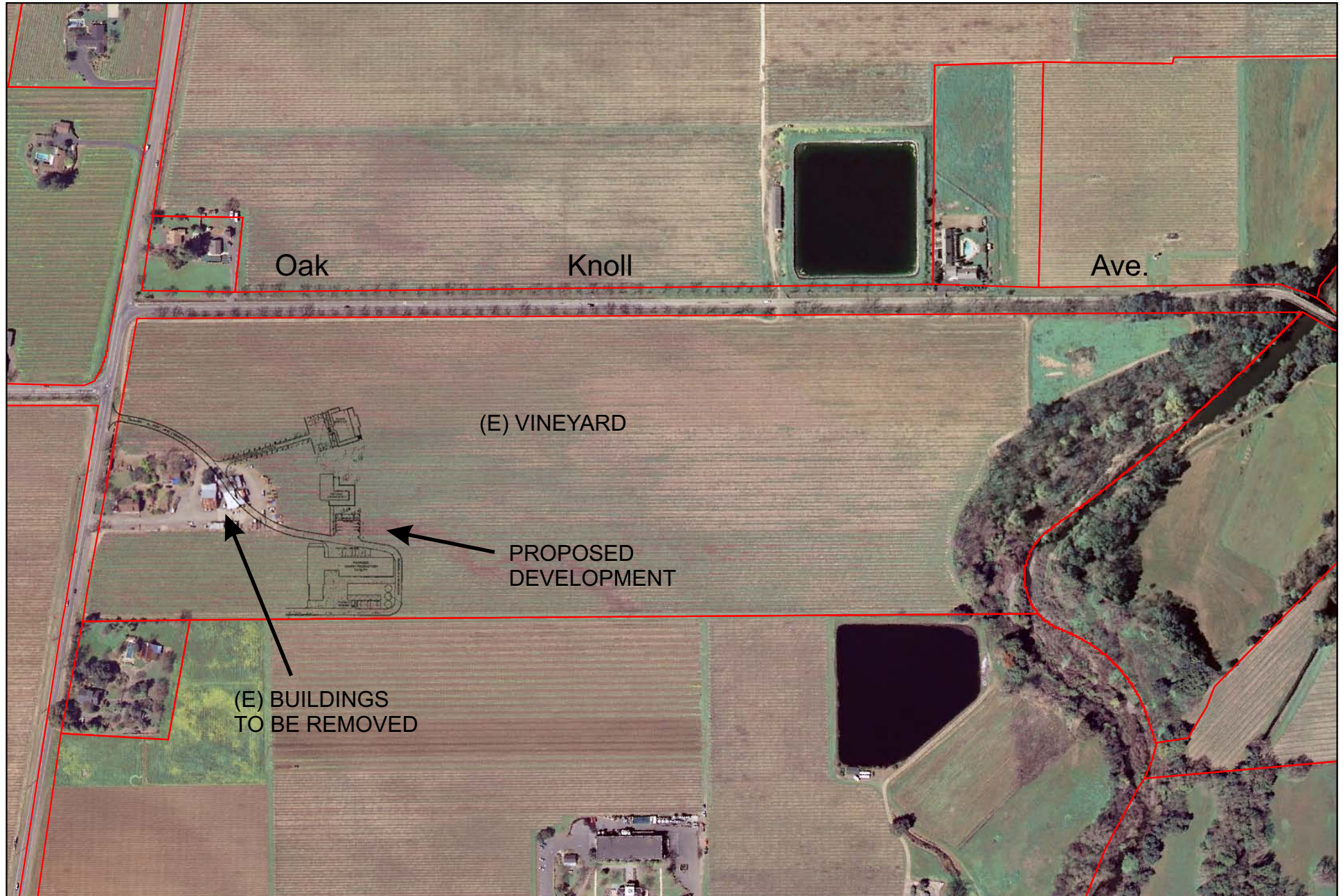
1/8" = 1'-0"

AREAS

FERMENTATION BUILDING	+/- 6,710 SF
BARREL BUILDING	+/- 4,850 SF
OFFICES BUILDING	+/- 1,750 SF
TOTAL ENCLOSED	+/- 13,310 SF



CUNAT / MATERRA WINERY



0 225 450 900 1,350 1,800 Feet



CUNAT / MATERRA WINERY

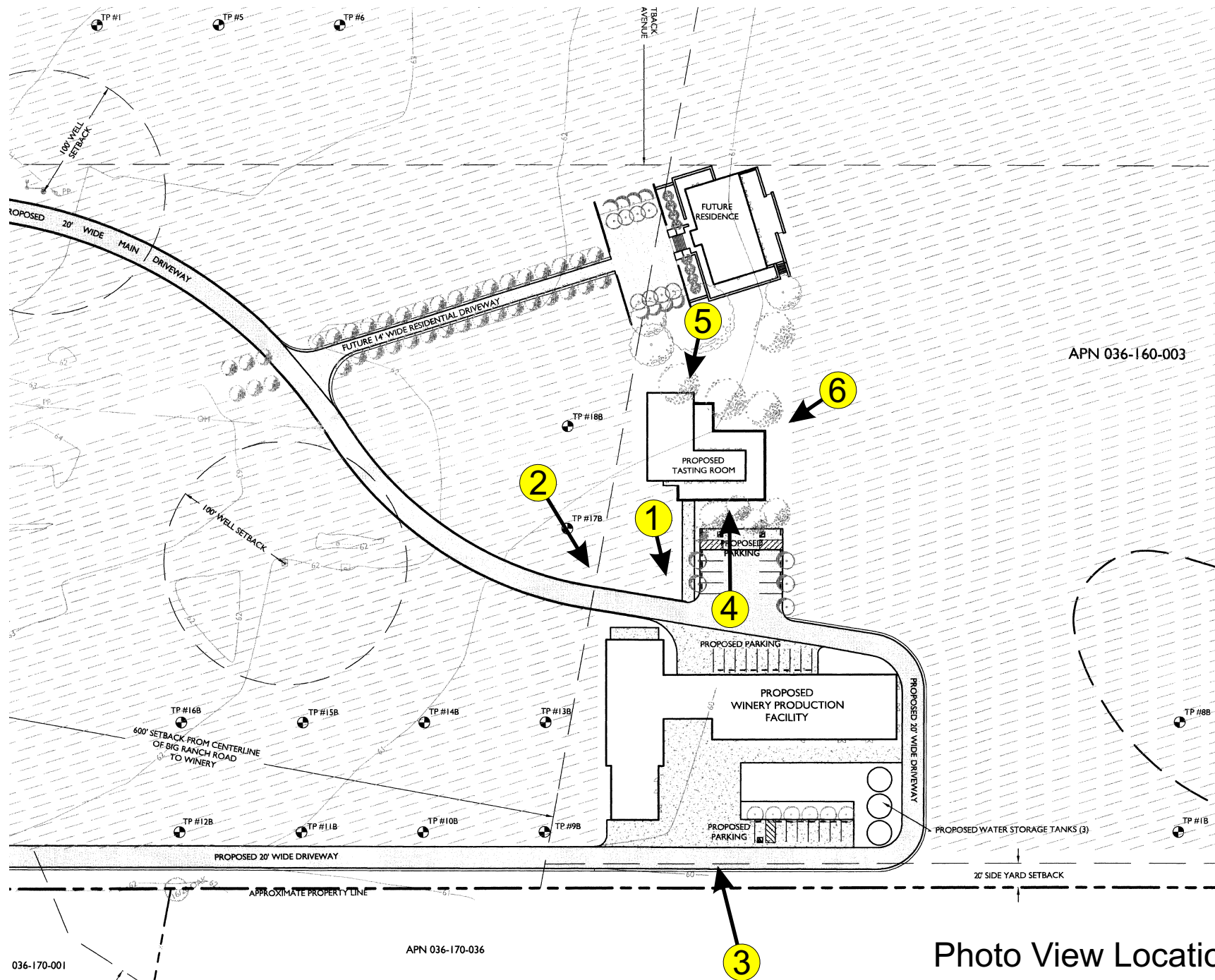
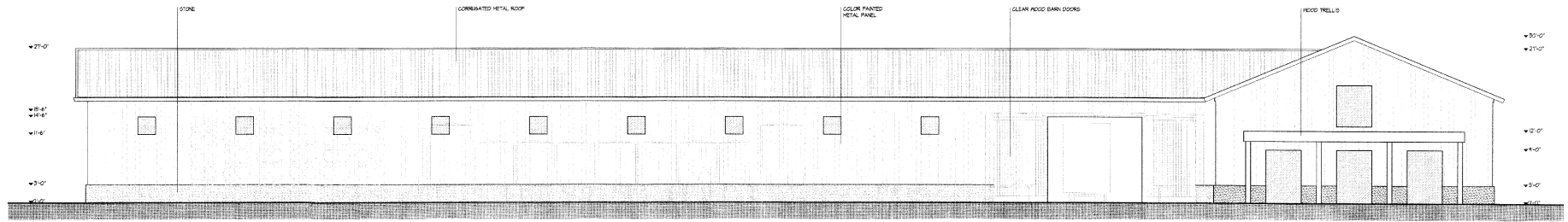


Photo View Locations

CUNAT / MATERRA WINERY



North Elevation



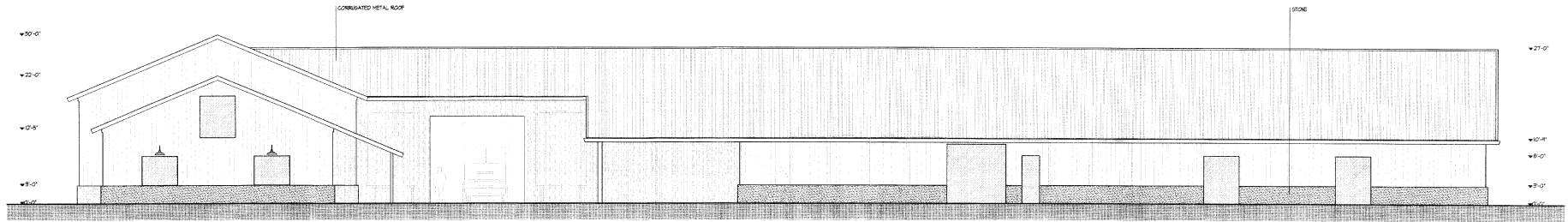
NORTH VIEW



North-West View

● = Photo View

CUNAT / MATERRA WINERY



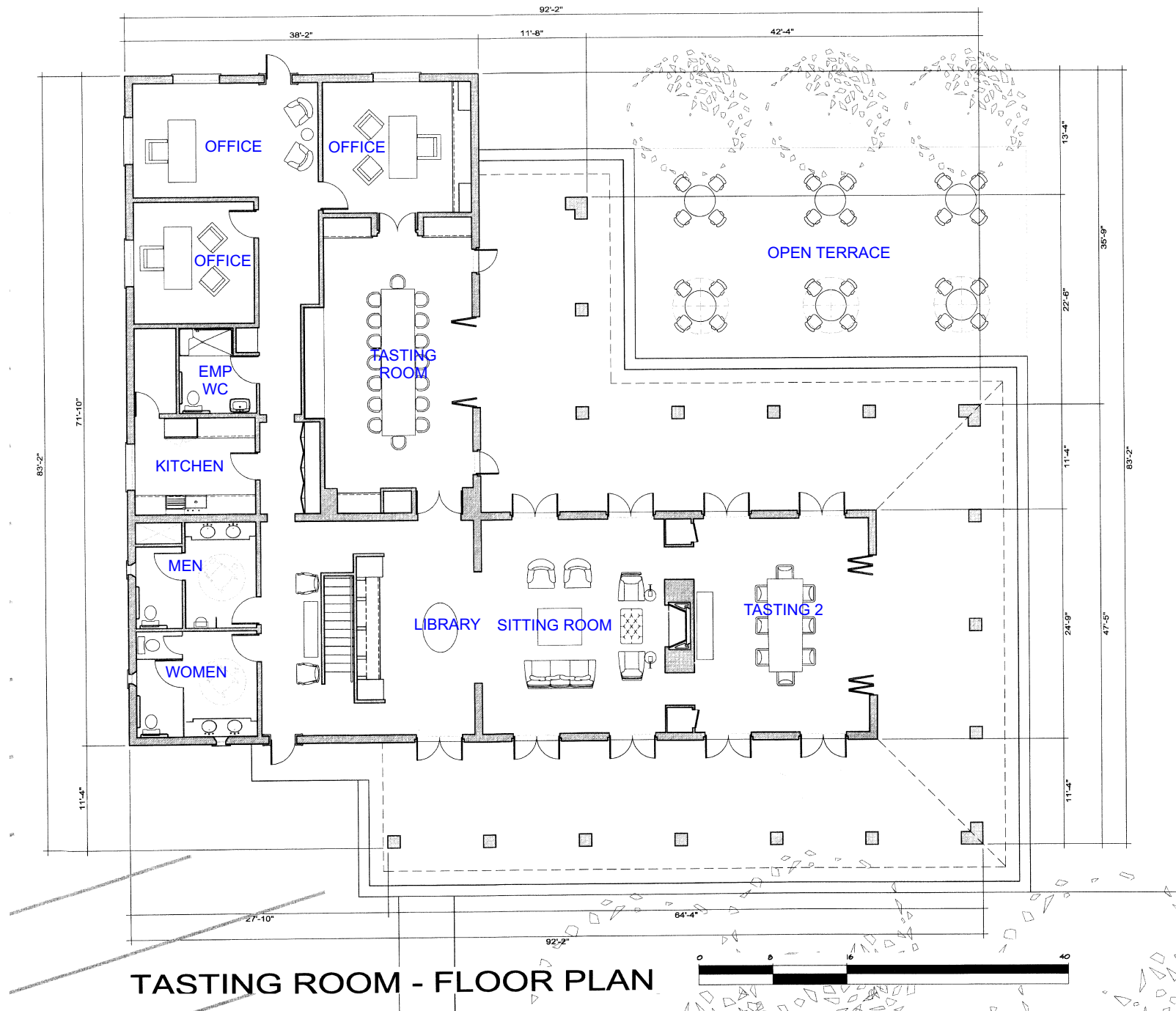
South Elevation



South View

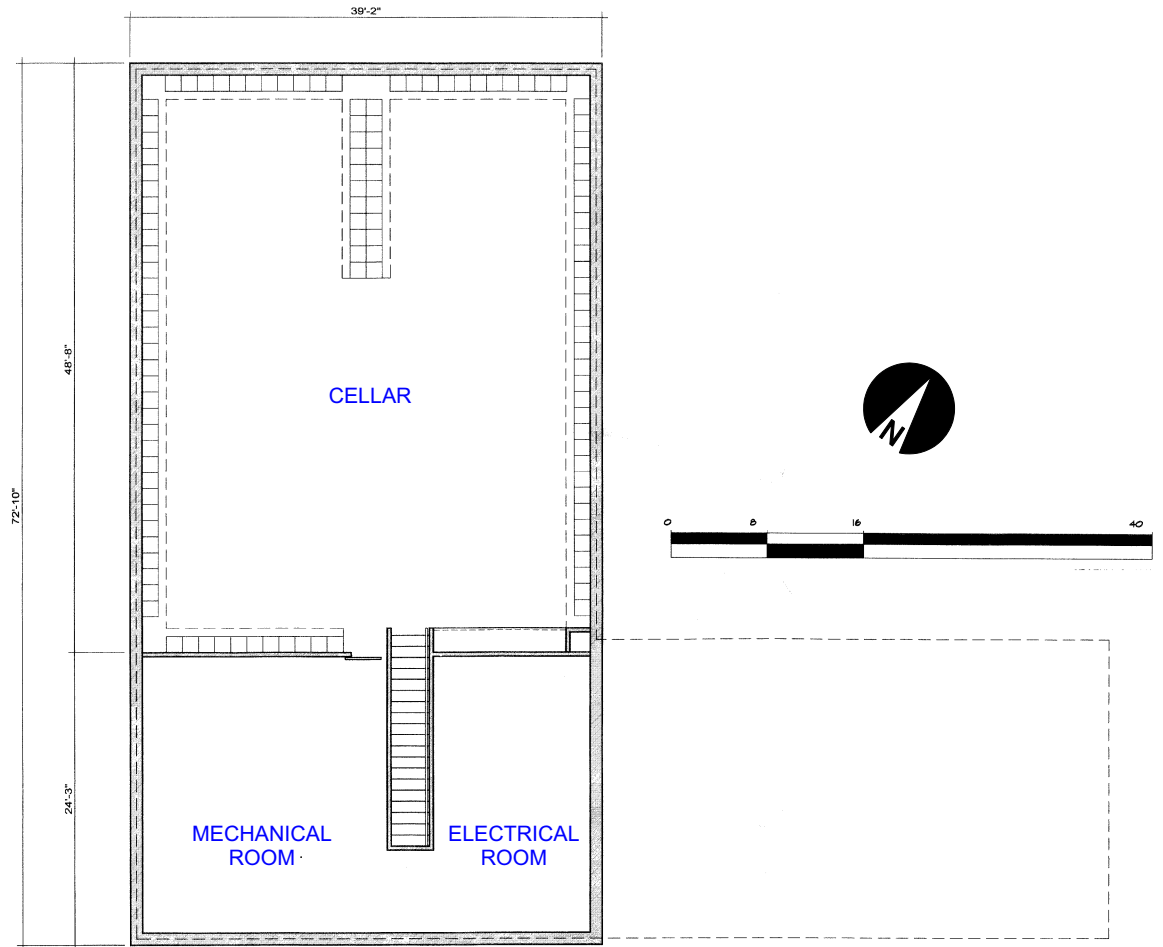
● = Photo View

CUNAT / MATERRA WINERY



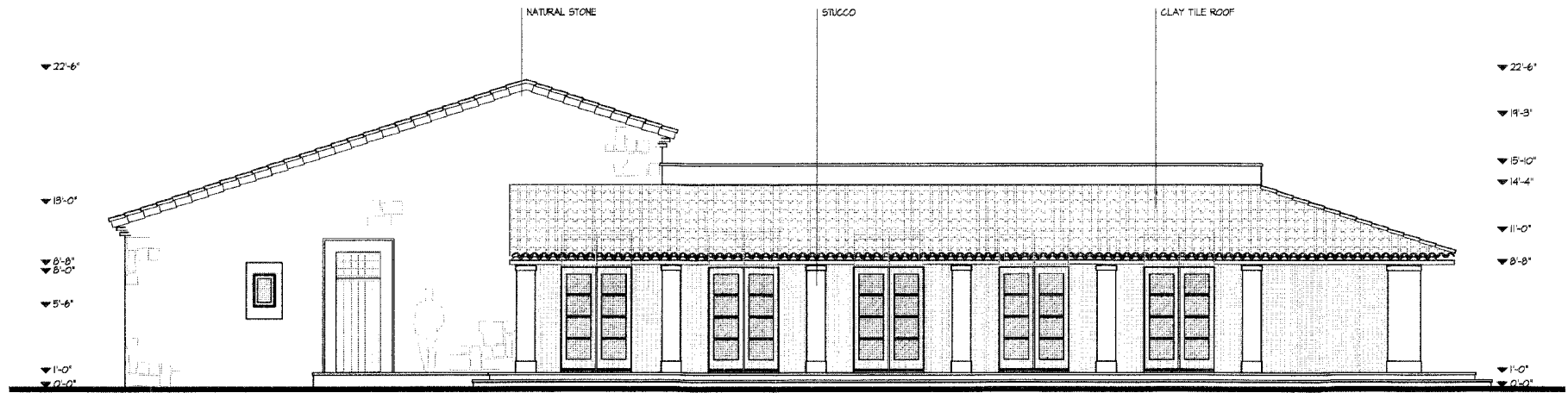
CUNAT / MATERRA WINERY

TASTING ROOM - BASEMENT



CUNAT / MATERRA WINERY

Tasting Room



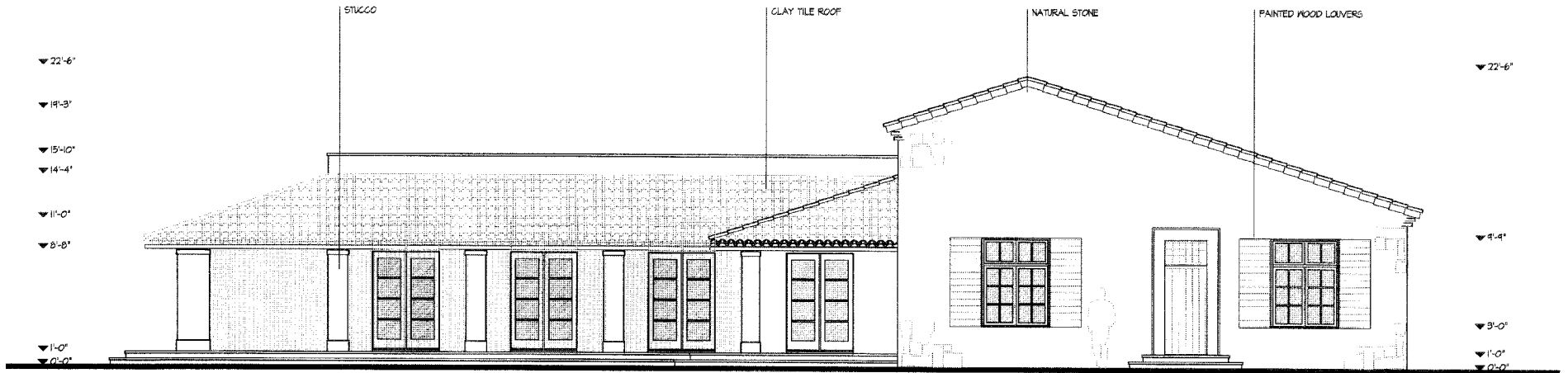
SOUTH ELEVATION



South View

● = Photo View

Tasting Room



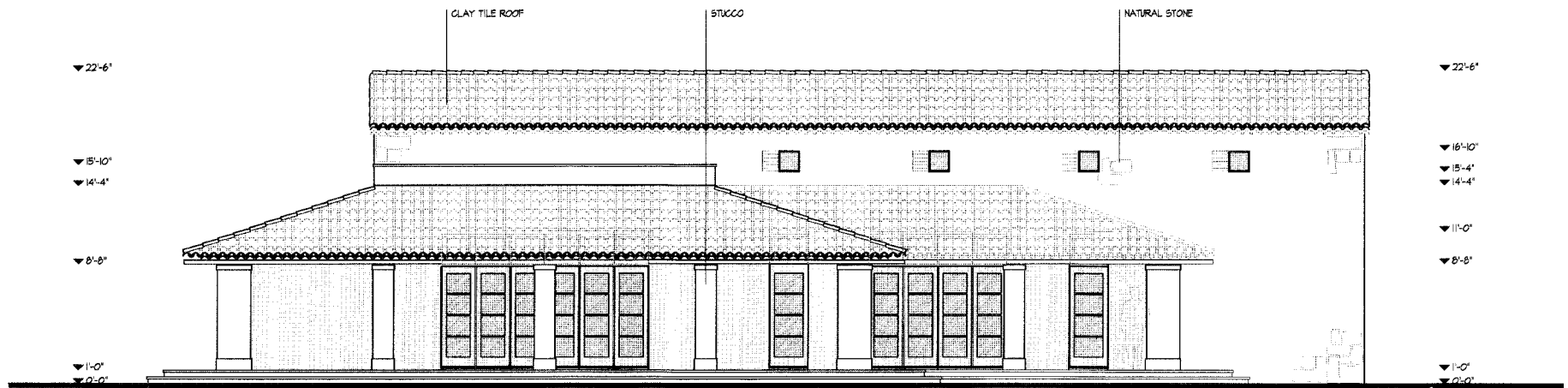
North Elevation



North View

● = Photo View

Tasting Room



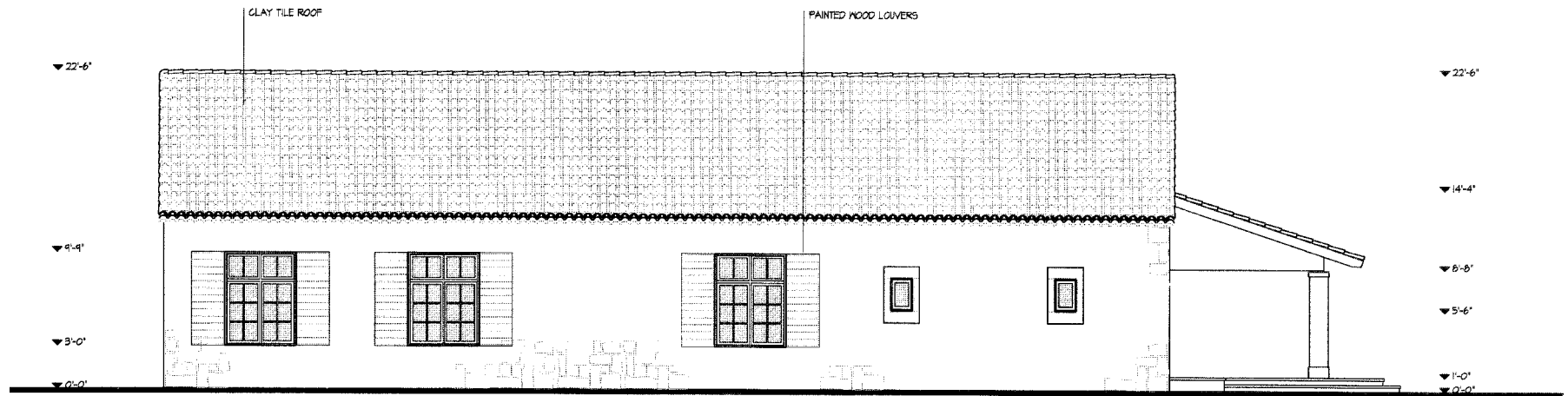
East Elevation



East View

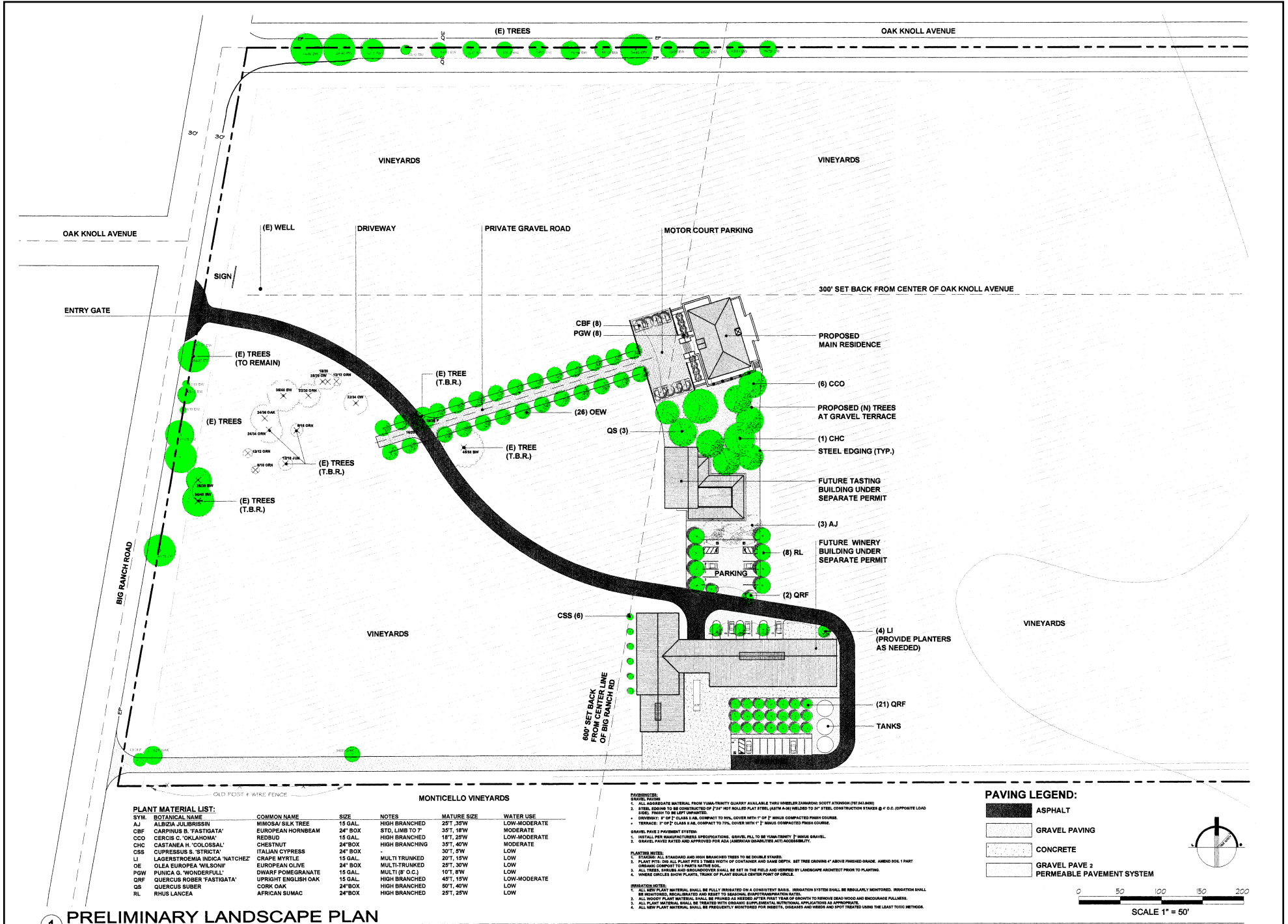
● = Photo View

Tasting Room



West Elevation

CUNAT / MATERRA WINERY



① PRELIMINARY LANDSCAPE PLAN