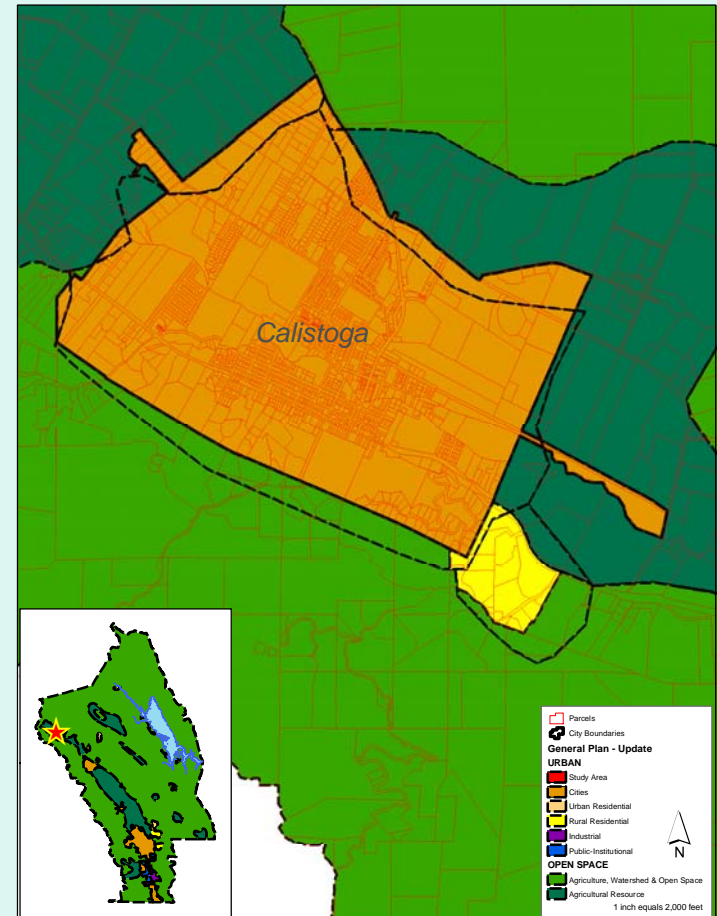
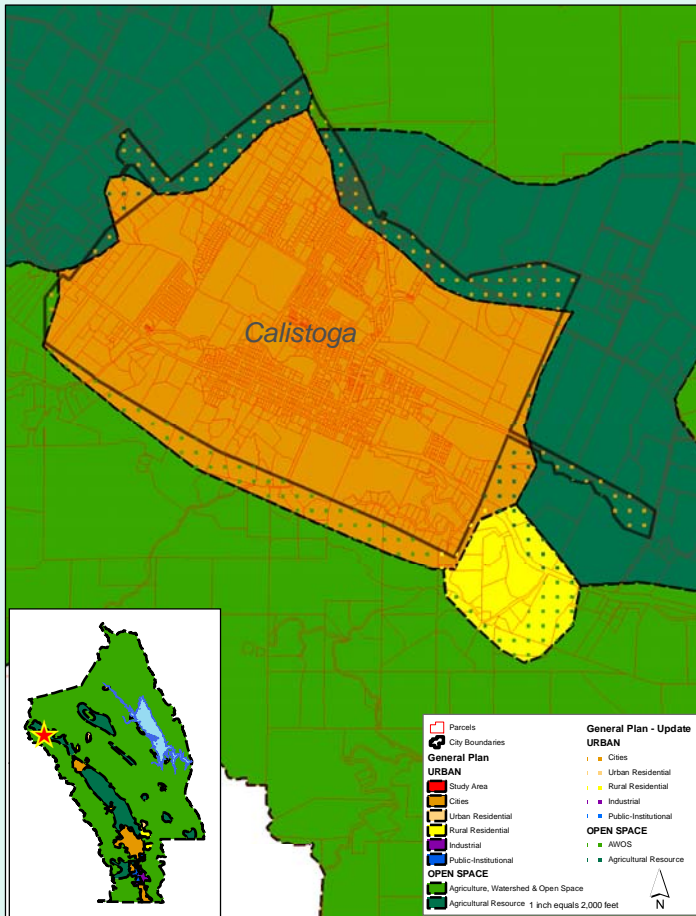
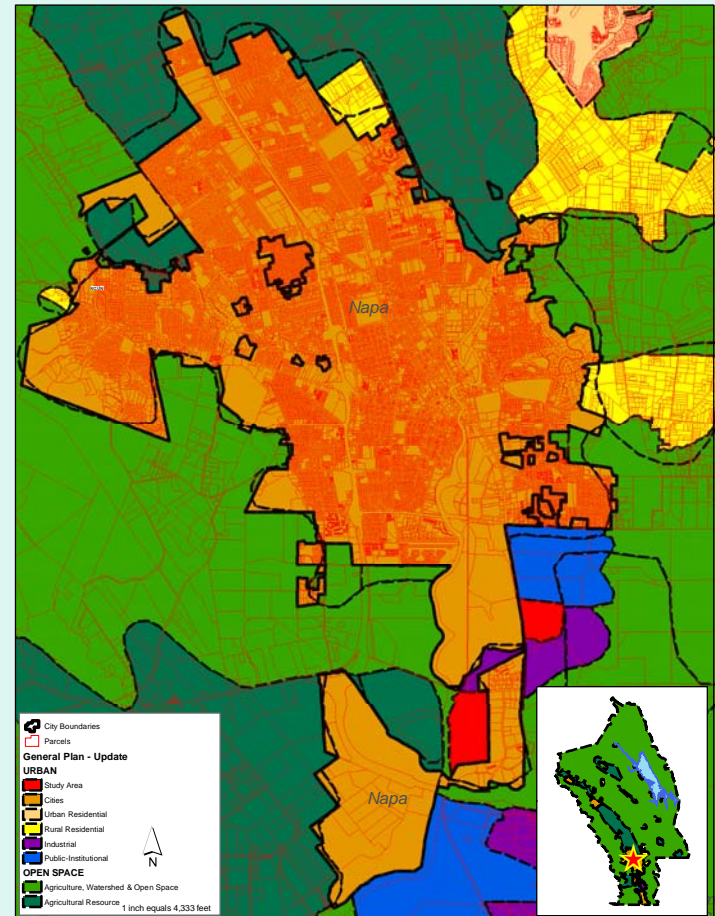
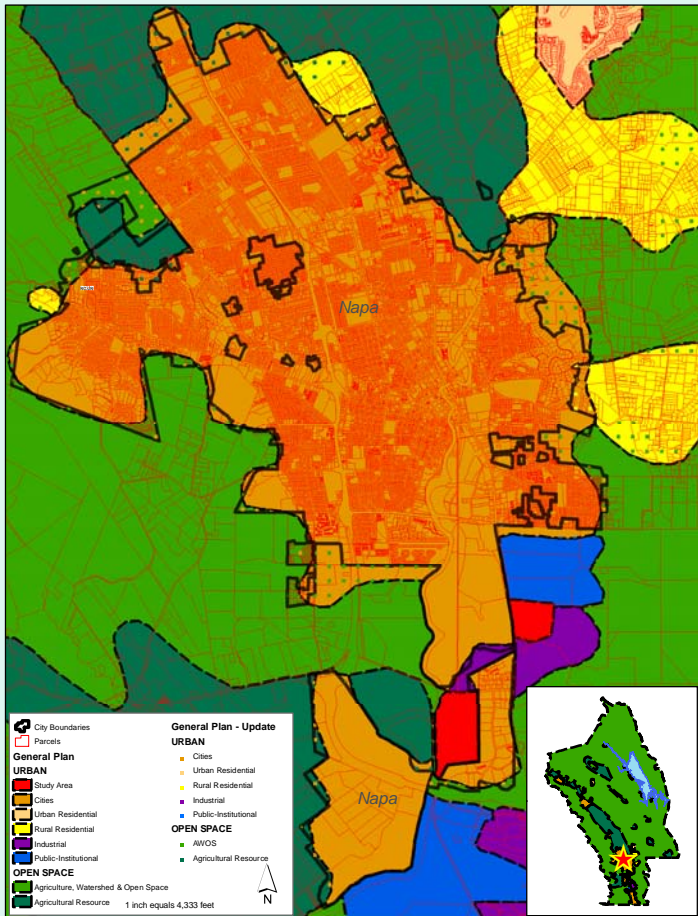


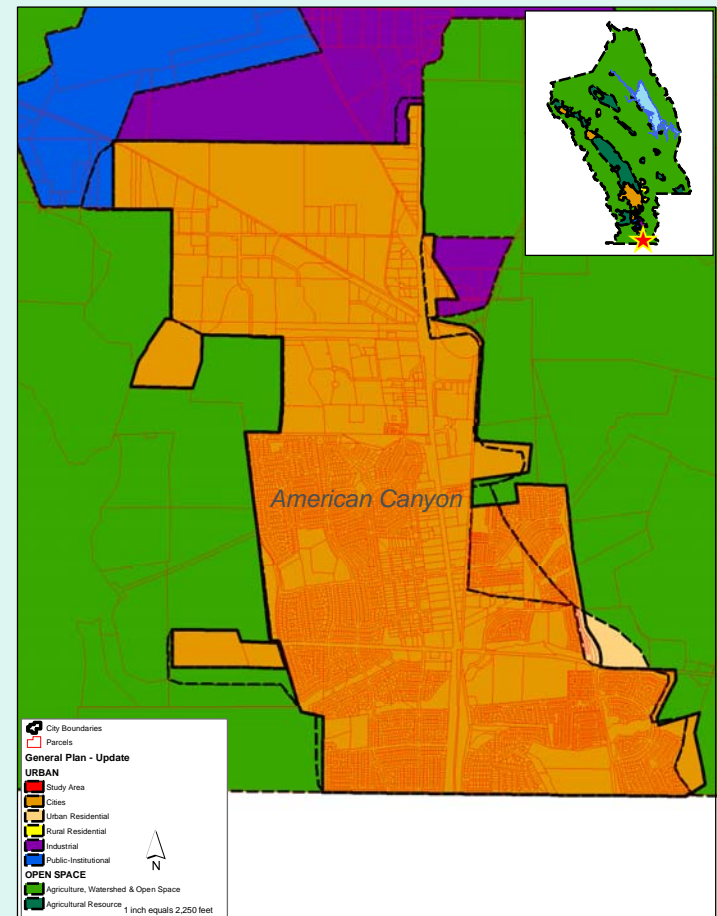
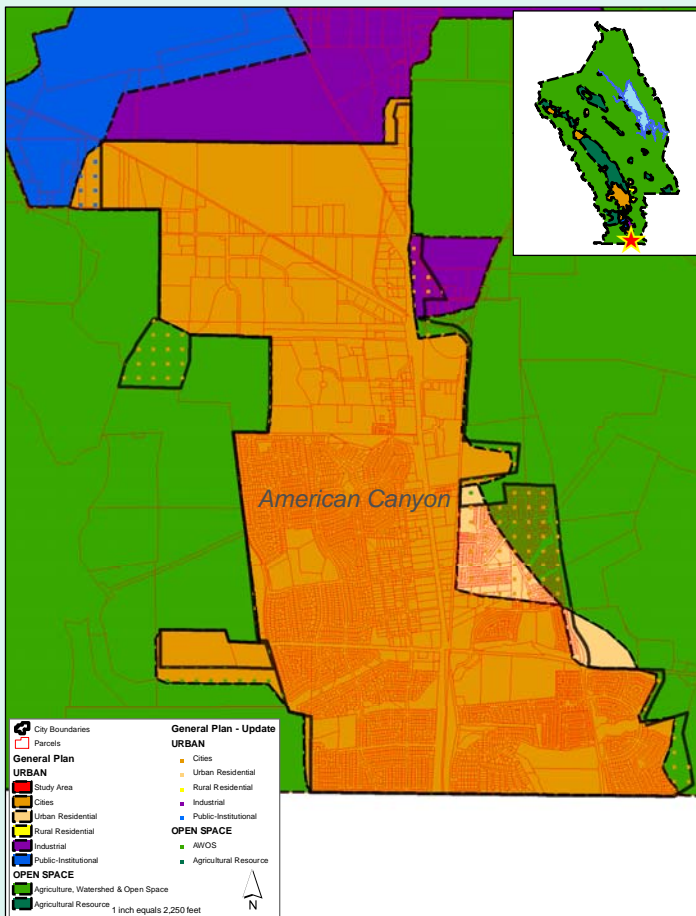
# Cities: Calistoga -- Existing & Proposed



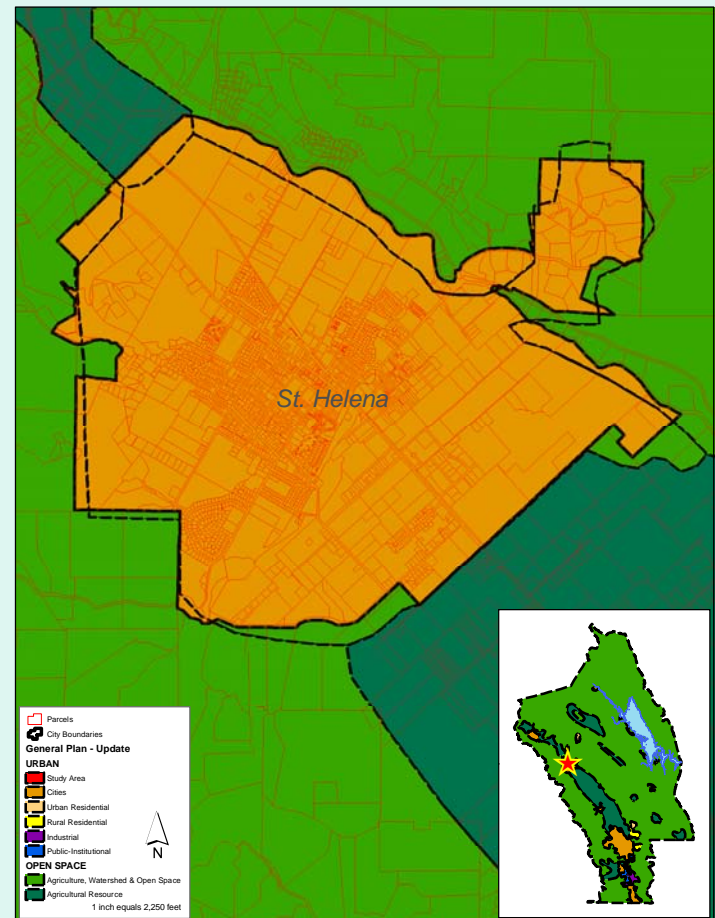
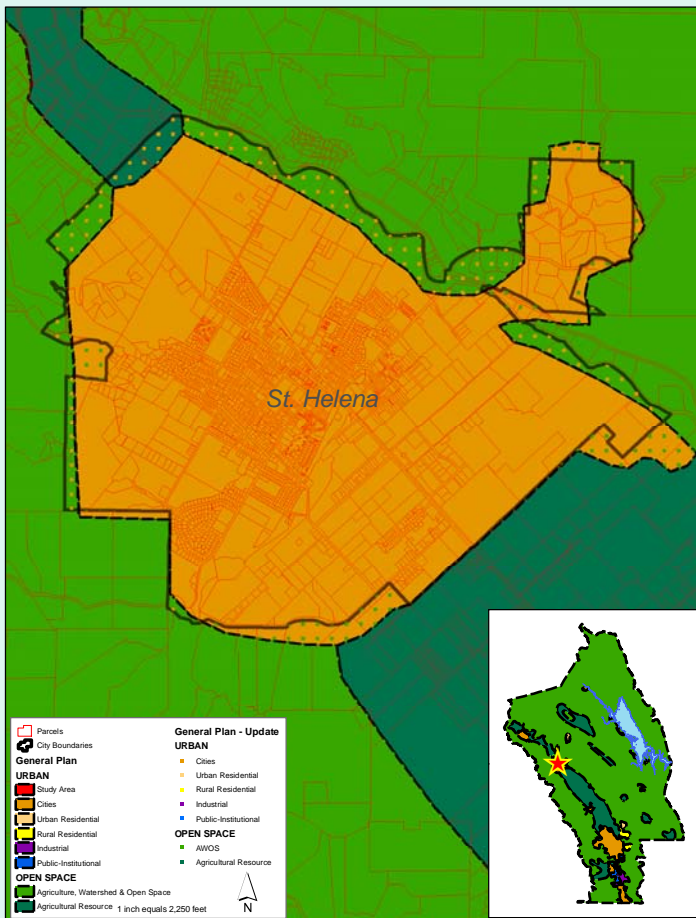
# Cities: Napa -- Existing & Proposed



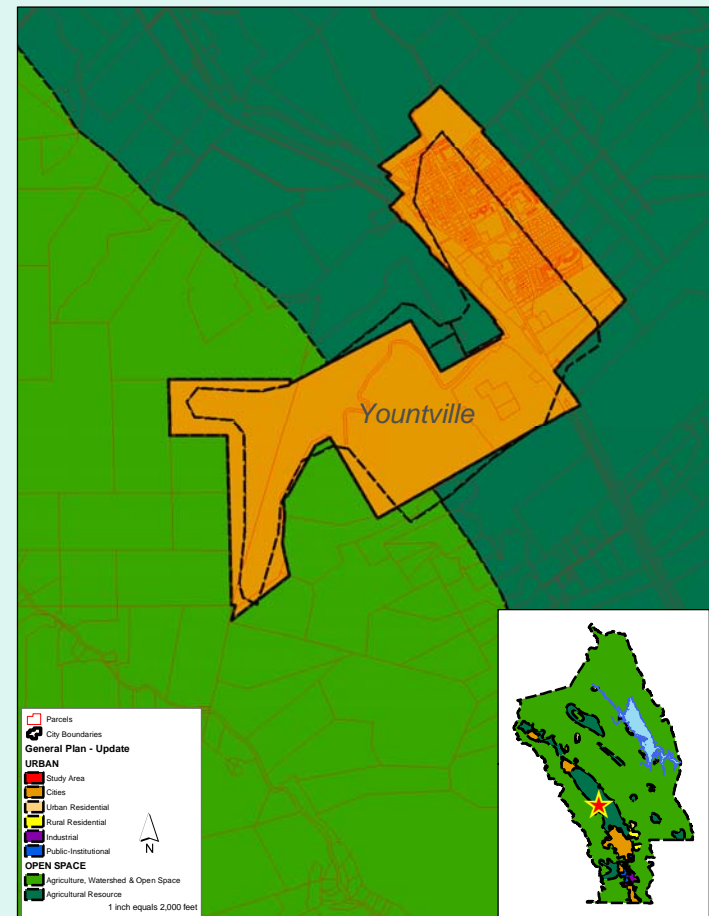
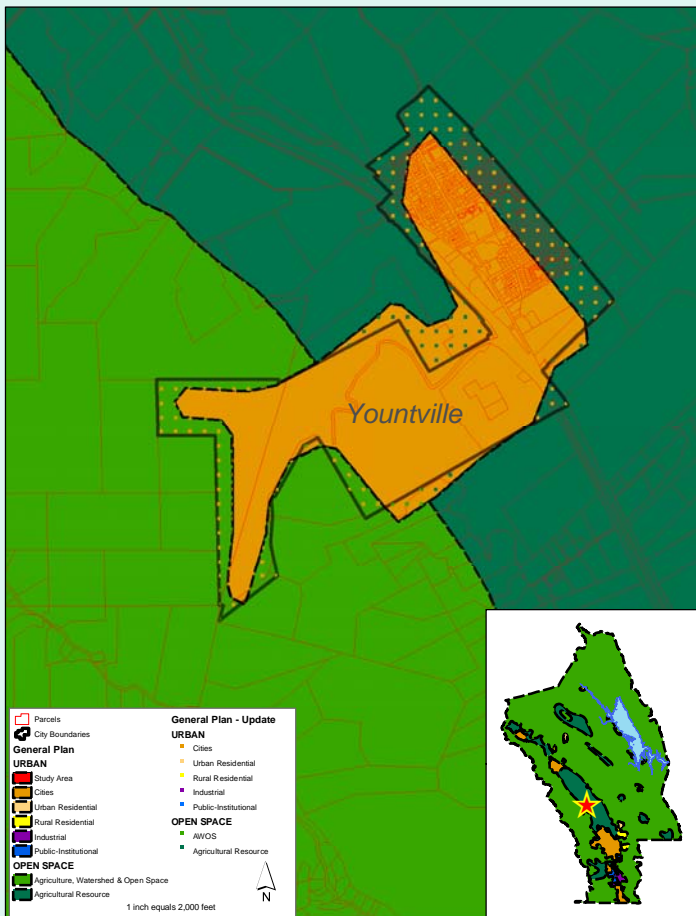
# Cities: American Canyon -- Existing & Proposed



# Cities: St. Helena -- Existing & Proposed



# Town of Yountville -- Existing & Proposed



# PLUMA Planning Process

## QUESTIONS FOR TODAY:

- Does the Commission agree with recommendations that remove ag-zoned land from the UR and RR?
- Does the Commission agree with recommendations for Angwin and Pope Creek that change parcels from UR to RR? (Note: the Housing Element Update is also looking at potential changes from RR to UR in the Silverado area.)
- Which options would the Commission like to focus on for Spanish Flat and Pope Creek? Is there another option that should be considered for Moskowitz Corners?
- Is the Commission comfortable using the Measure J exception in Berryessa Highlands & Berryessa Estates?
- Is the Commission comfortable changing the Land Use Map to reflect actual City boundaries & with staff's approach to lands within the City's spheres of influence?

## NEXT STEPS:

- April 9, 2008 Board Resolution 08-64 Adopted
- July 8, 2008 Public Meeting & Workbook
- Additional data collection & analysis
- *August 20, 2008 Planning Commission discussion & direction to staff*
- CEQA review, public notice & staff report preparation (incl. draft resolution)
- Planning Commission action (tentatively October 15)
- Board of Supervisors action (tentatively November 18)