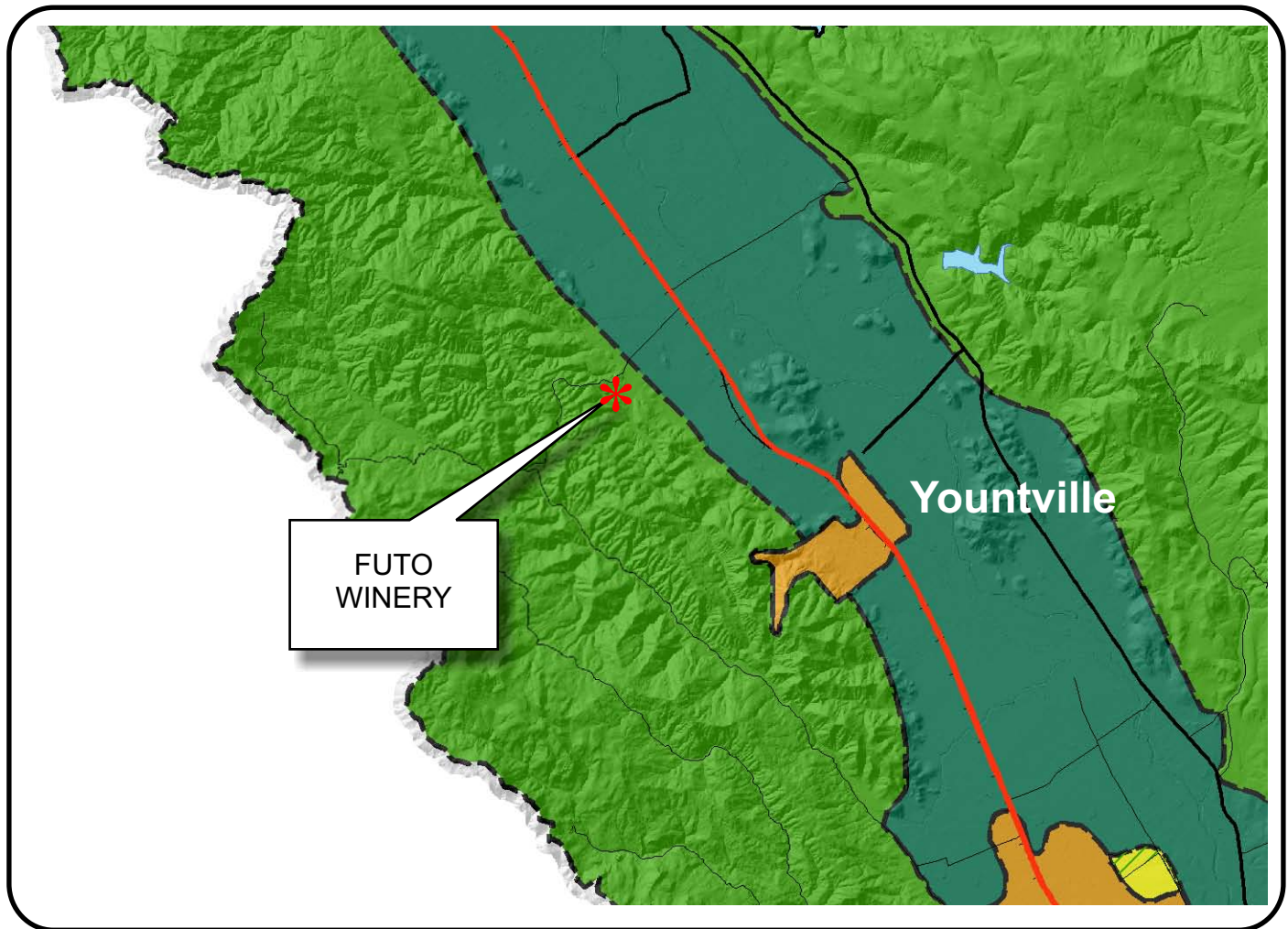








# NAPA COUNTY LAND USE PLAN 2008 - 2030





## LEGEND

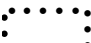
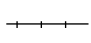




### URBANIZED OR NON-AGRICULTURAL

-  Cities
-  Urban Residential \*
-  Rural Residential \*
-  Industrial
-  Public-Institutional
-  Study Area

### OPEN SPACE

-  Agriculture, Watershed & Open Space
-  Agricultural Resource

### TRANSPORTATION

-  Mineral Resource
-  Railroad
-  Limited Access Highway
-  Major Road
-  Secondary Road
-  Airport
-  Airport Clear Zone
-  Landfill - General Plan

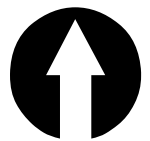
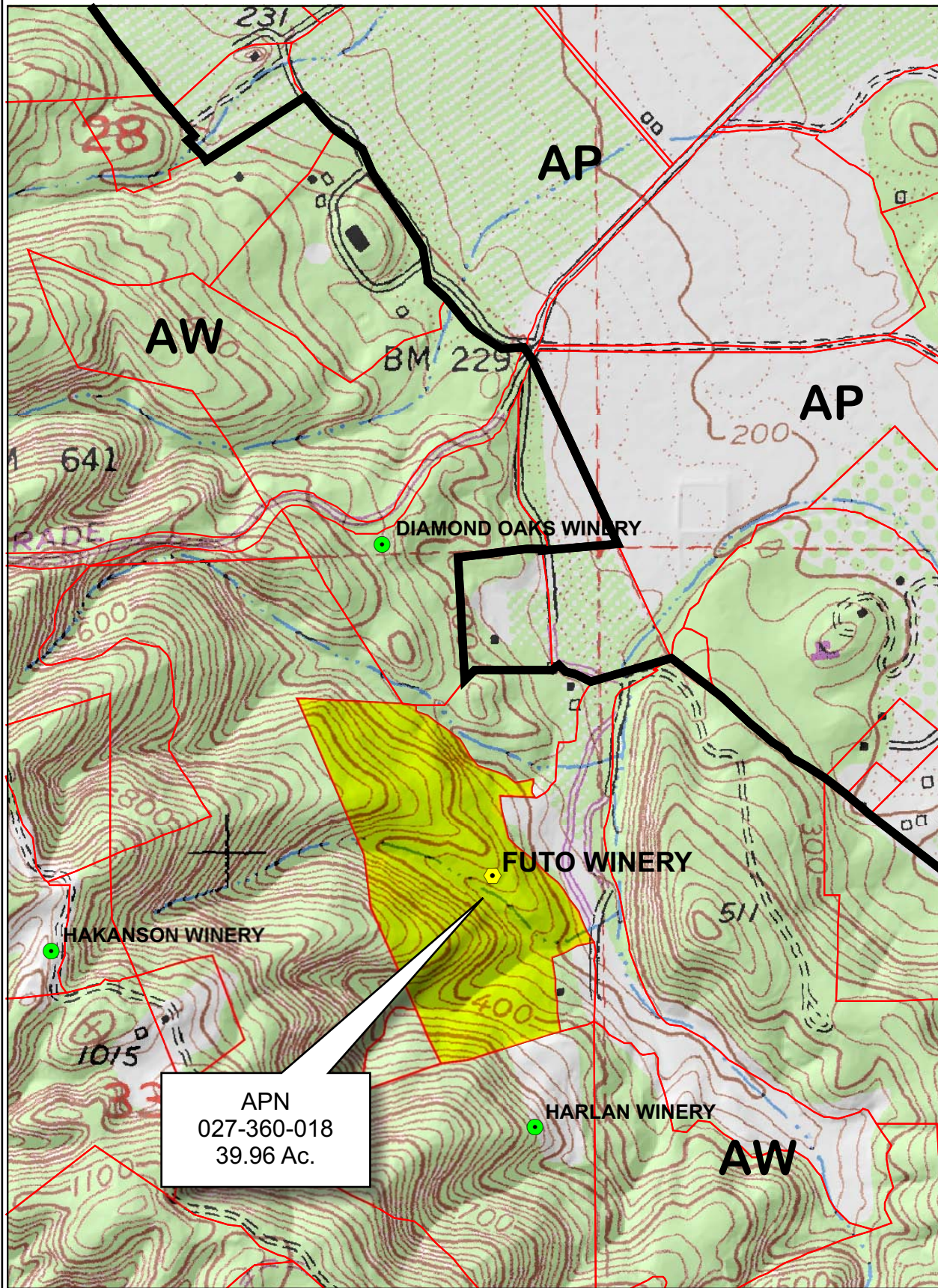
\* See Action Item AG/LU-114.1 regarding agriculturally zoned areas within these land use designations

APN  
027-360-018  
06-26-2008  
7B UP

SCALE IN MILES  
0 2



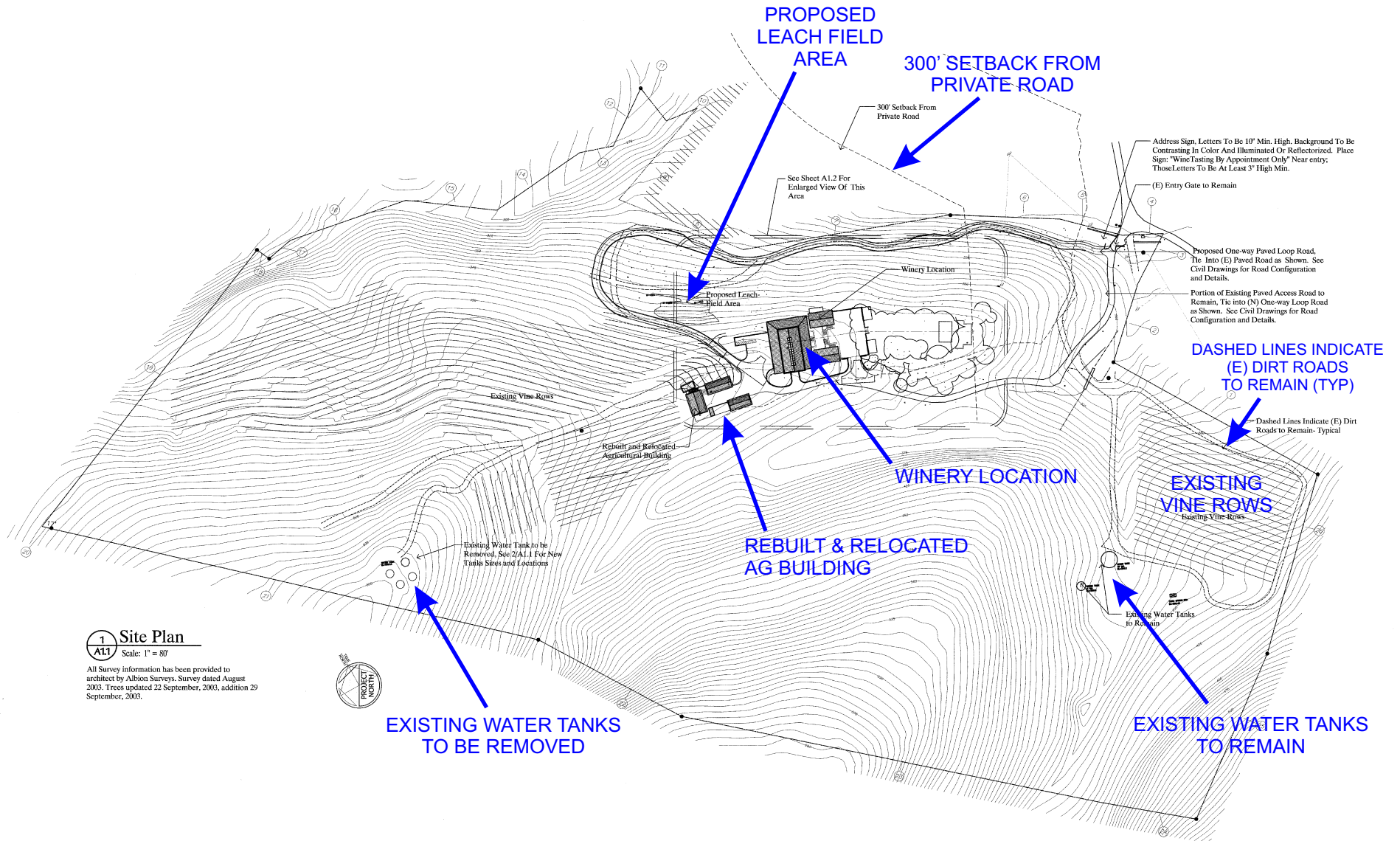
# FUTO WINERY



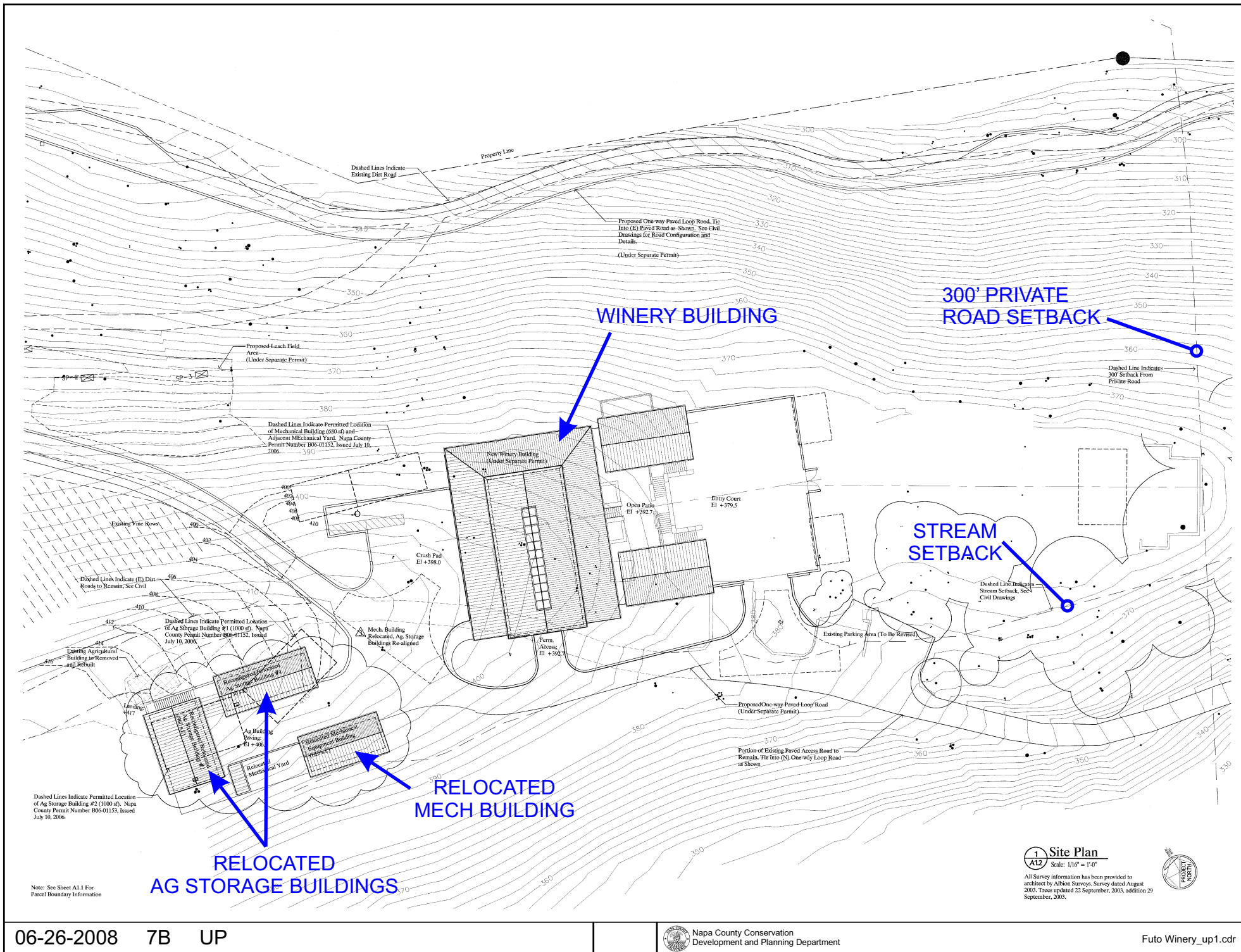
## Legend

- Wineries in Vicinity
- Producing
  - Approved
  - Pending
  - Zoning
  - Parcels

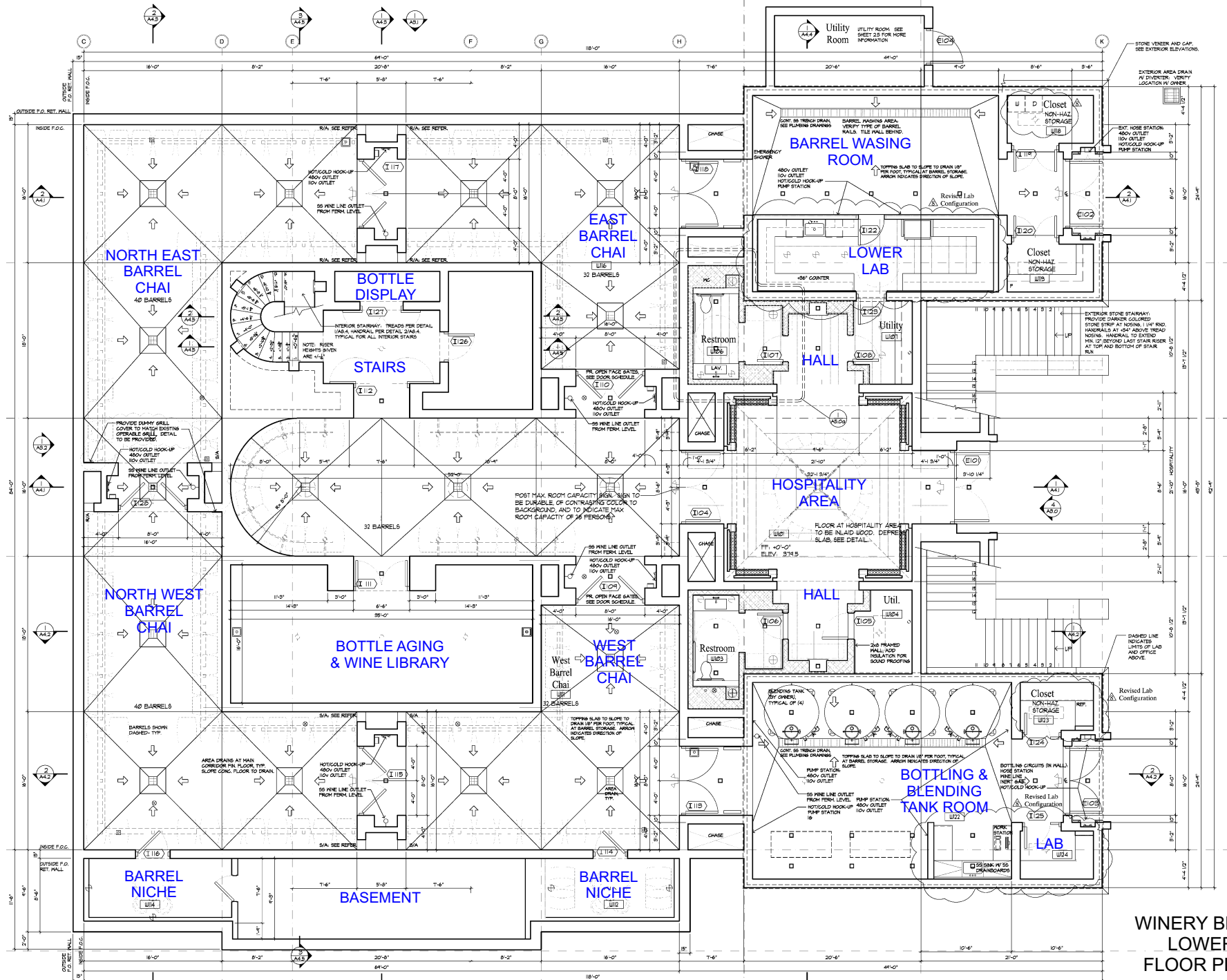
# FUTO WINERY



# FUTO WINERY



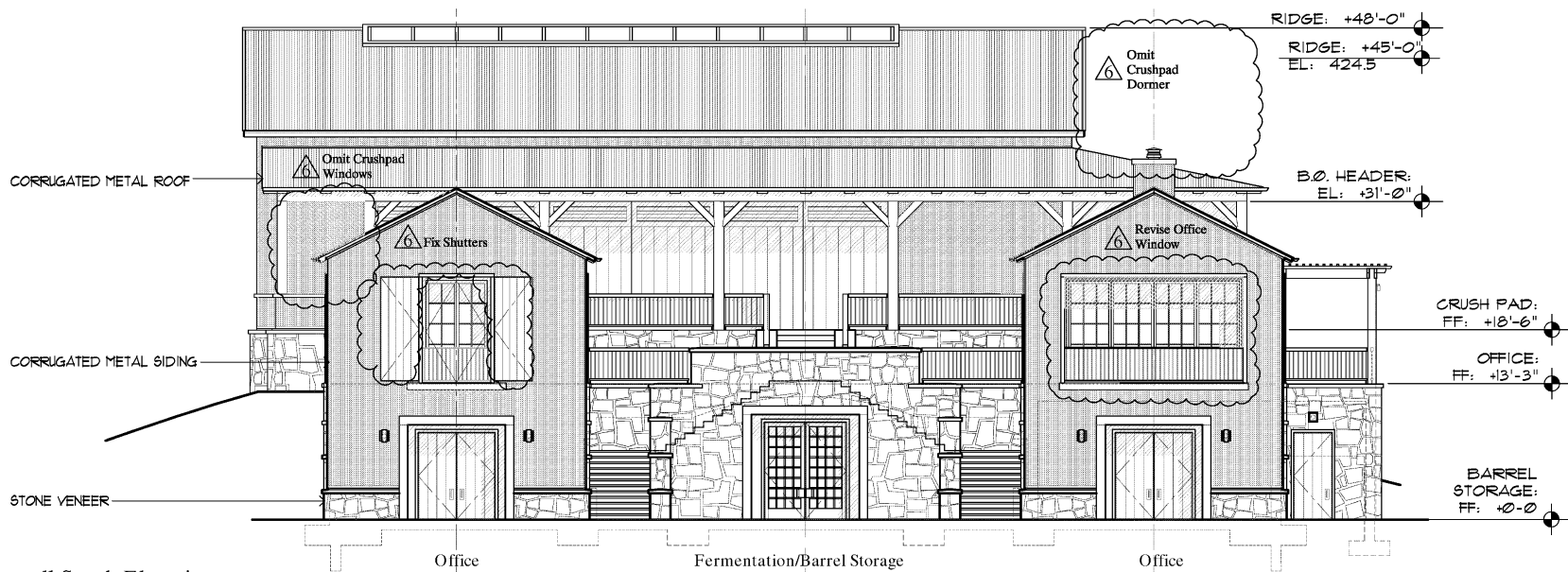
# FUTO WINERY



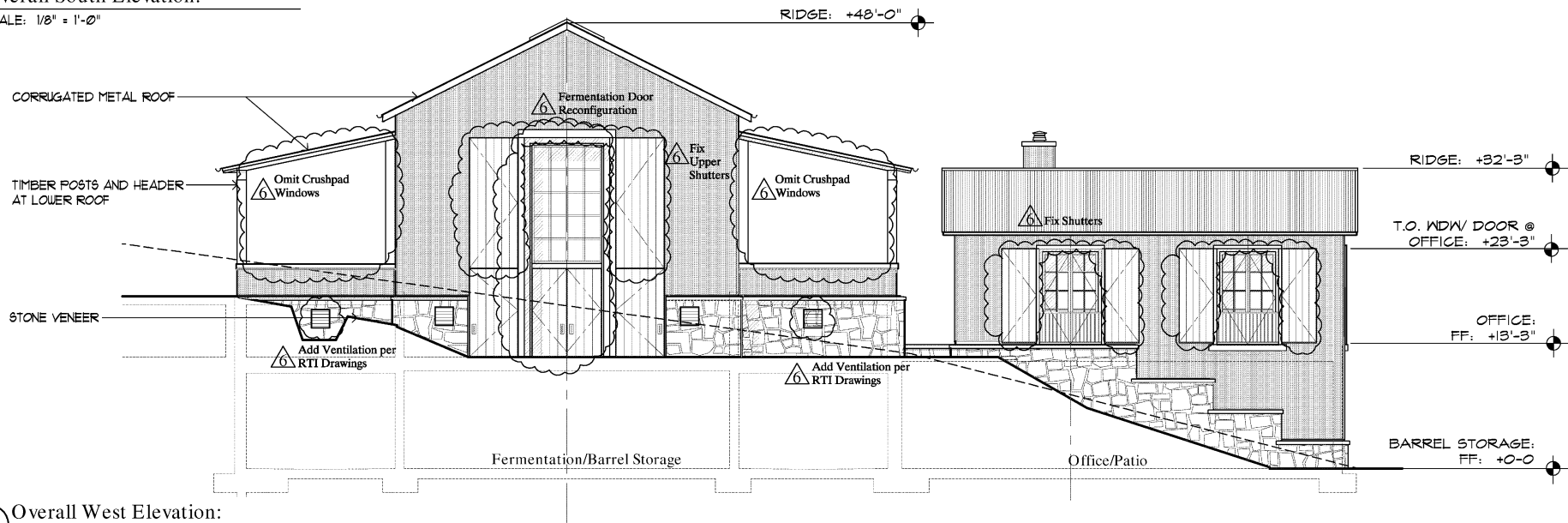
WINERY BLDG.  
LOWER  
FLOOR PLAN

[illegible]

# FUTO WINERY



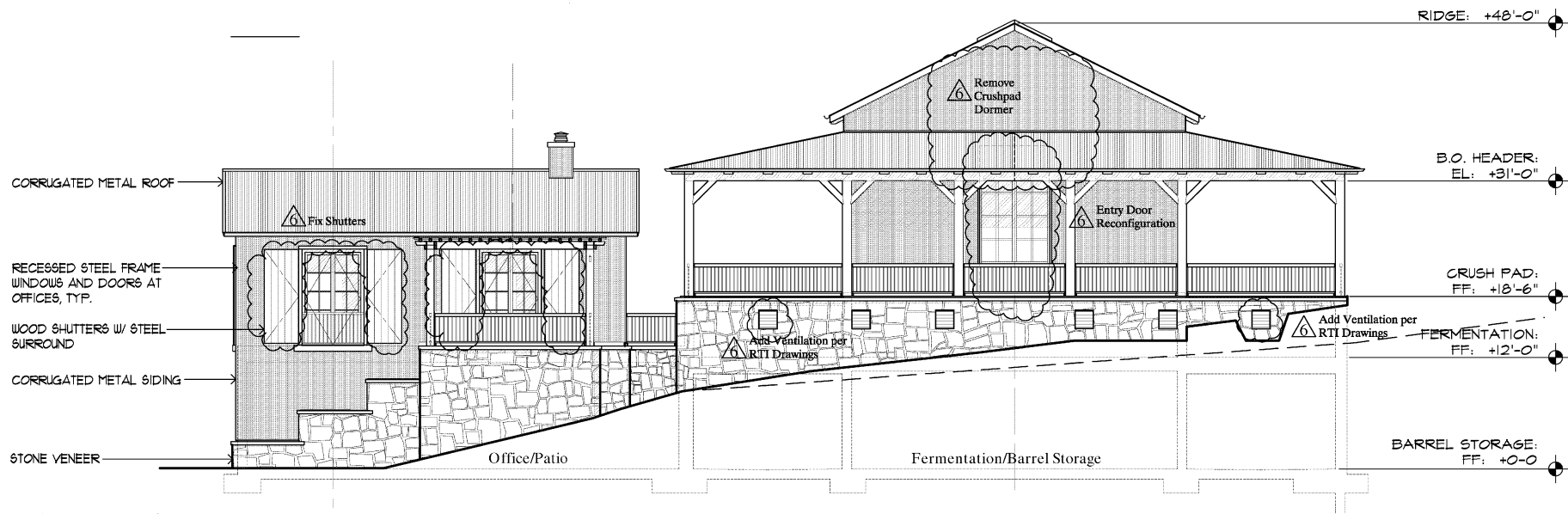
1 Overall South Elevation:  
A30 SCALE: 1/8" = 1'-0"



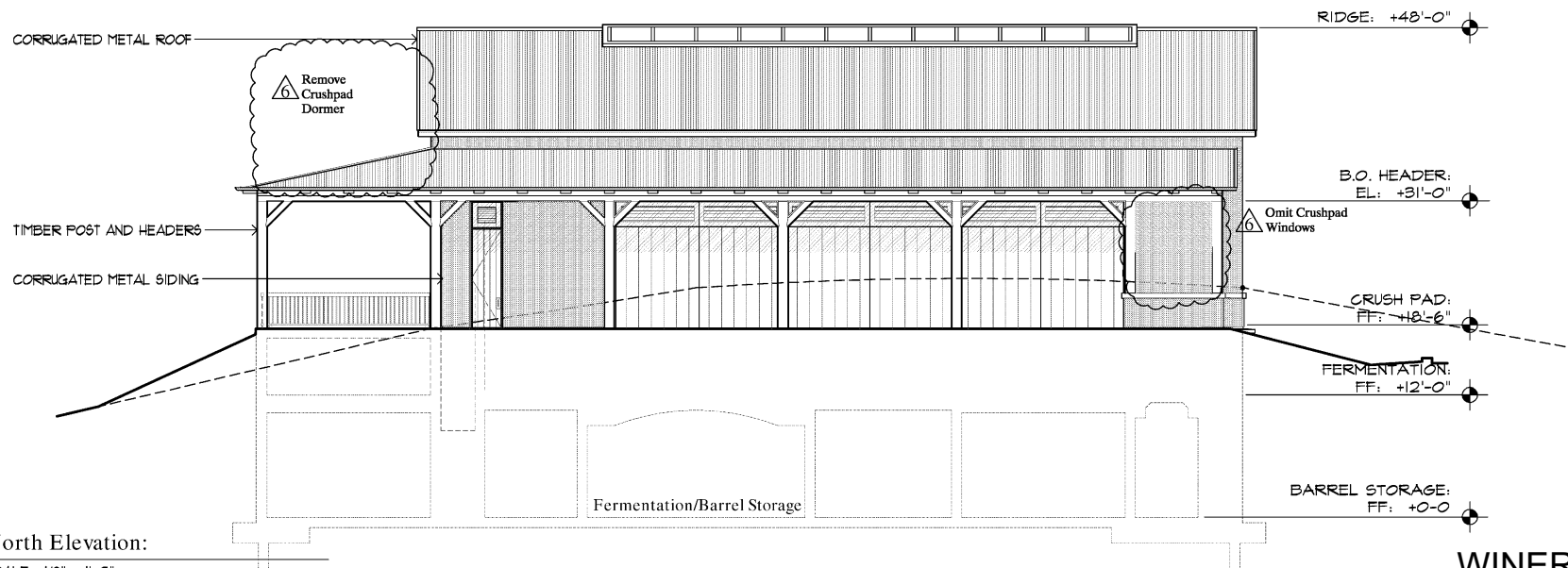
2 Overall West Elevation:  
A30 SCALE: 1/8" = 1'-0"

WINERY BLDG.  
ELEVATIONS

# FUTO WINERY



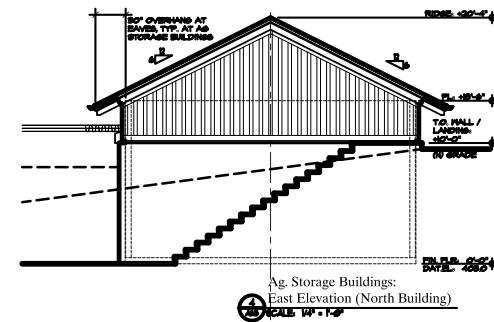
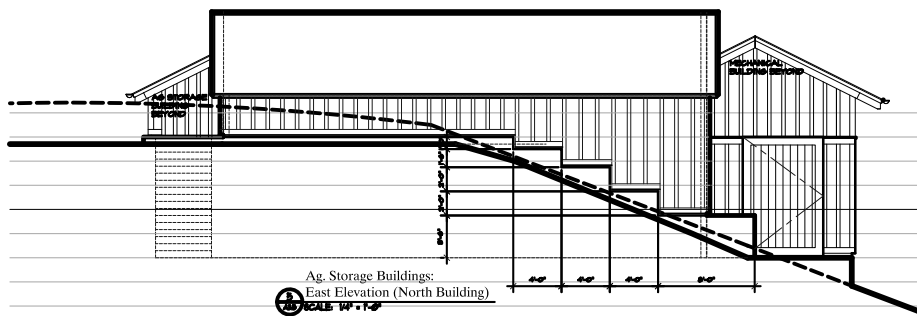
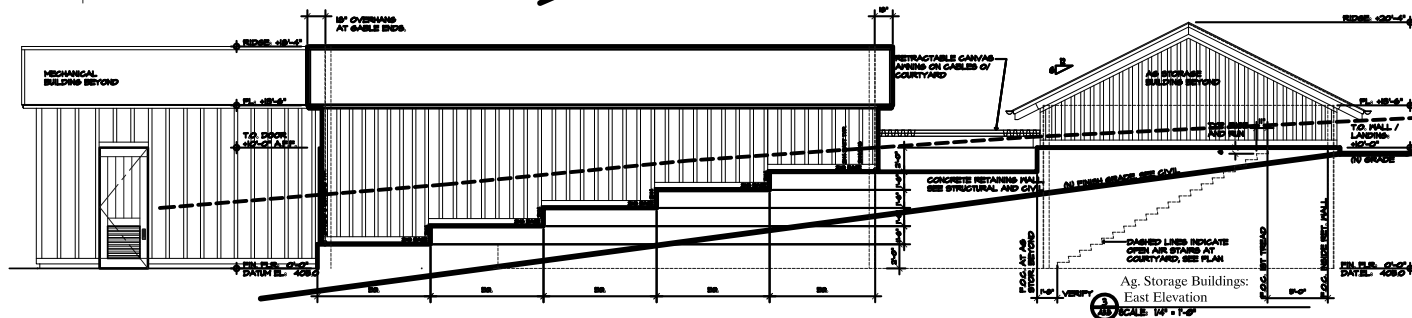
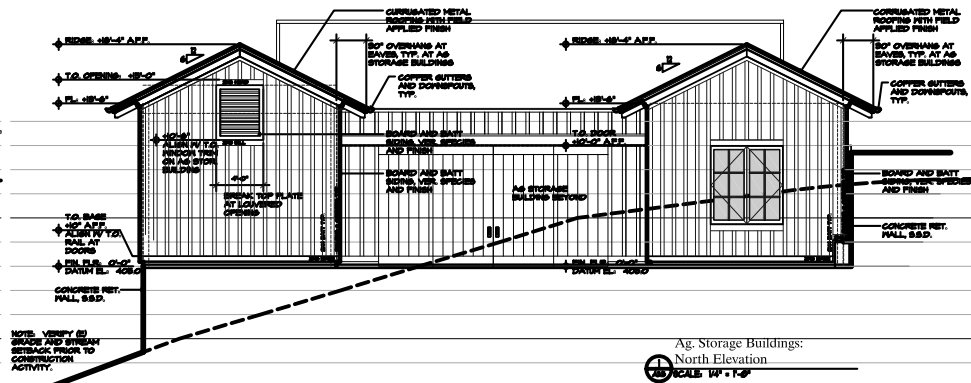
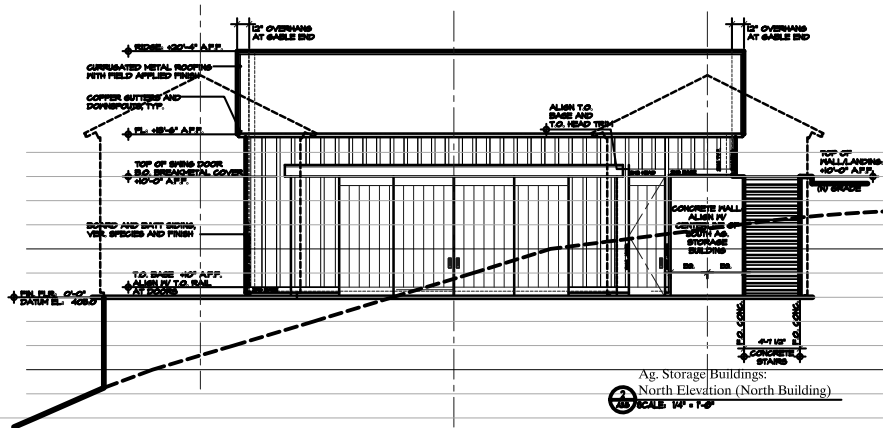
3 Overall East Elevation:  
SCALE: 1/8" = 1'-0"



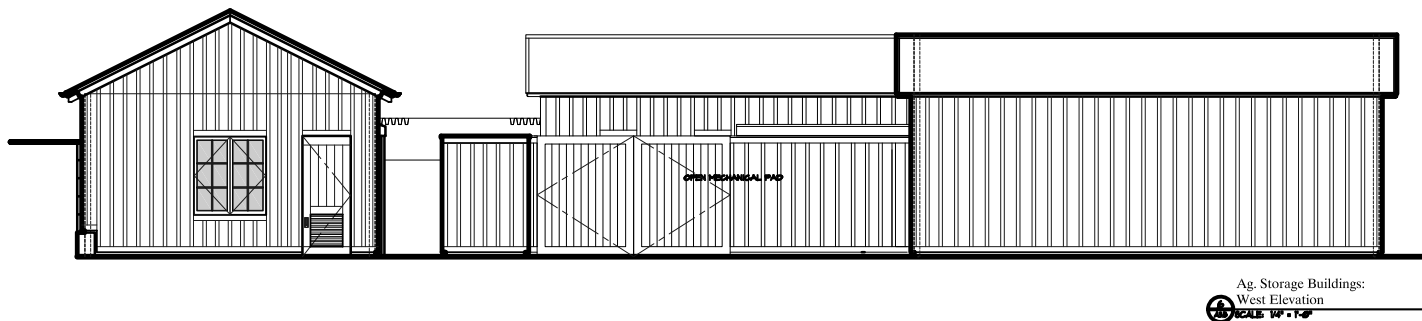
4 North Elevation:  
SCALE: 1/8" = 1'-0"

WINERY BLDG.  
ELEVATIONS

# FUTO WINERY



EXTERIOR  
ELEVATIONS  
AG. STORAGE &  
MECH. BLDGS.





The image contains two architectural drawings of a storage building, showing two different elevations. The drawings are annotated with various dimensions and material specifications.

**Left Elevation Annotations:**

- RIDGE: +18'-4" AFF.
- FL. +12'-6"
- T.O. DOOR: +12'-0" AFF.
- FIN. F.L. 0'-0" DATUM EL. 408.0
- CORRUGATED METAL ROOFING WITH FIELD APPLIED FINISH
- 18" OVERHANGS AT EAVES, TYP. AT AS STORAGE BUILDINGS
- COPPER GUTTERS AND DOWNSPOUTS, TYP.
- BOARD AND BATT SIDING, VER. SPECIES AND FINISH
- CONCRETE RET. WALL, S.S.D.

**Right Elevation Annotations:**

- ROOF O/ TRASH ENCLOSURE: CORRUGATED METAL ROOFING O/ ROOF SHEATHING 2 6x RAFTERS @50" O.C. -S.S.D.
- 4x GAP AT T.O. PARAPET WALL
- FL. +12'-6"
- BREAK METAL COVER O/ BUILDING EXPOSED HARDWARE: BOARD AND BATT SIDING, VER. SPECIES AND FINISH
- TRASH ENCLOSURE: PROVIDE ROLLING GATE
- T.O. BASE: 10' AFF. ALIGN W/ T.O. RAIL AT DOORS
- FIN. F.L. 0'-0" DATUM EL. 408.0
- CONCRETE RET. WALL, SEE CIVIL AND STRUCTURAL

**General Notes:**

- DASHED LINES INDICATE AS STORAGE BUILDING IN THE FOREGROUND

②



Futo Winery\_up1.cdr