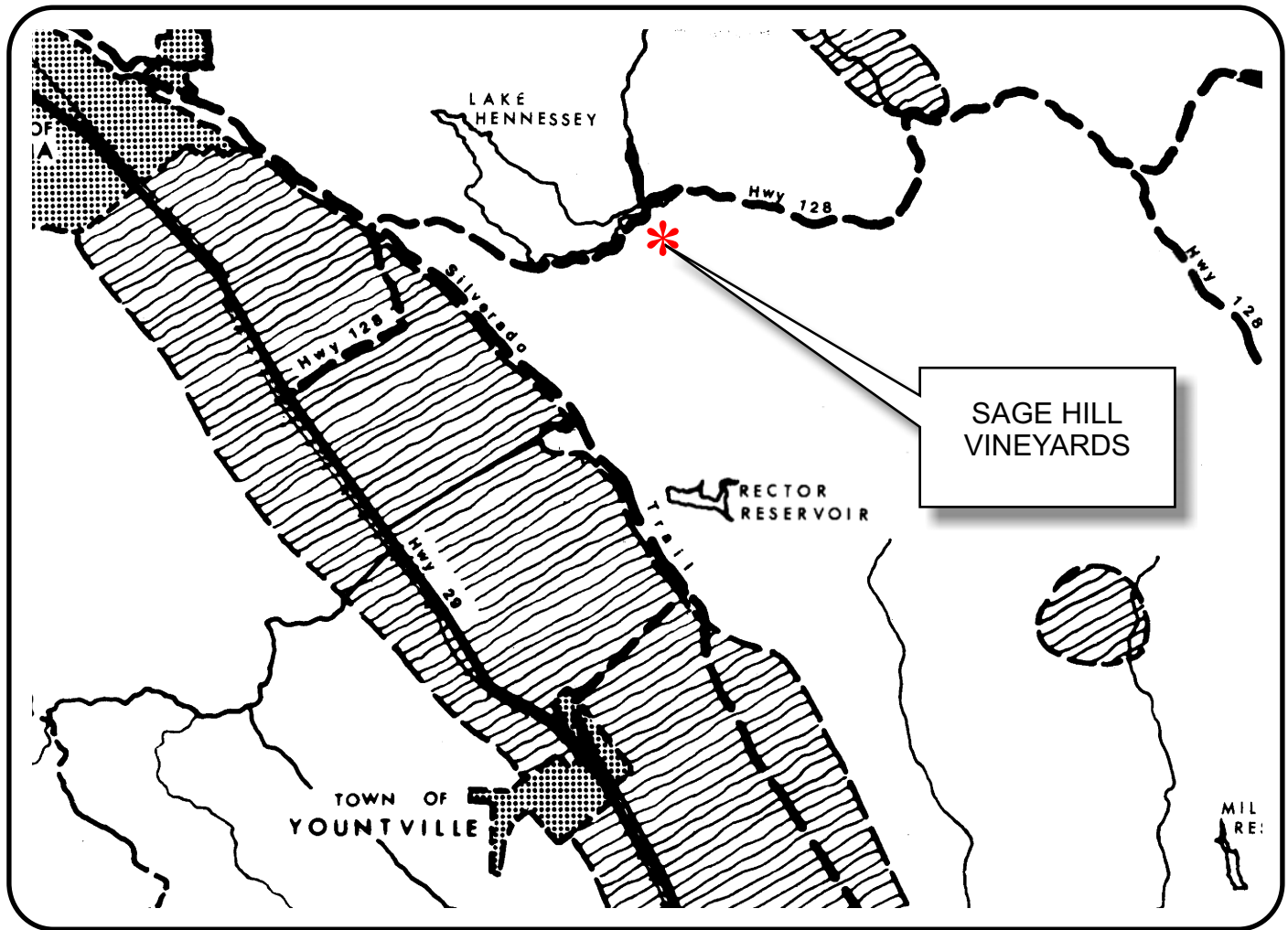


NAPA COUNTY LAND USE PLAN 1998 - 2000



LEGEND

TRANSPORTATION

- LIMITED ACCESS HIGHWAY
- MAJOR ROAD
- SECONDARY ROAD
- RAILROAD
- AIRPORT
- LANDFILL SITE

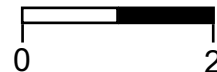
OPEN SPACE

- AGRICULTURE, WATERSHED & OPEN SPACE
- AGRICULTURAL RESOURCE

URBAN

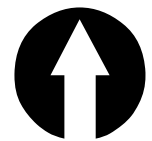
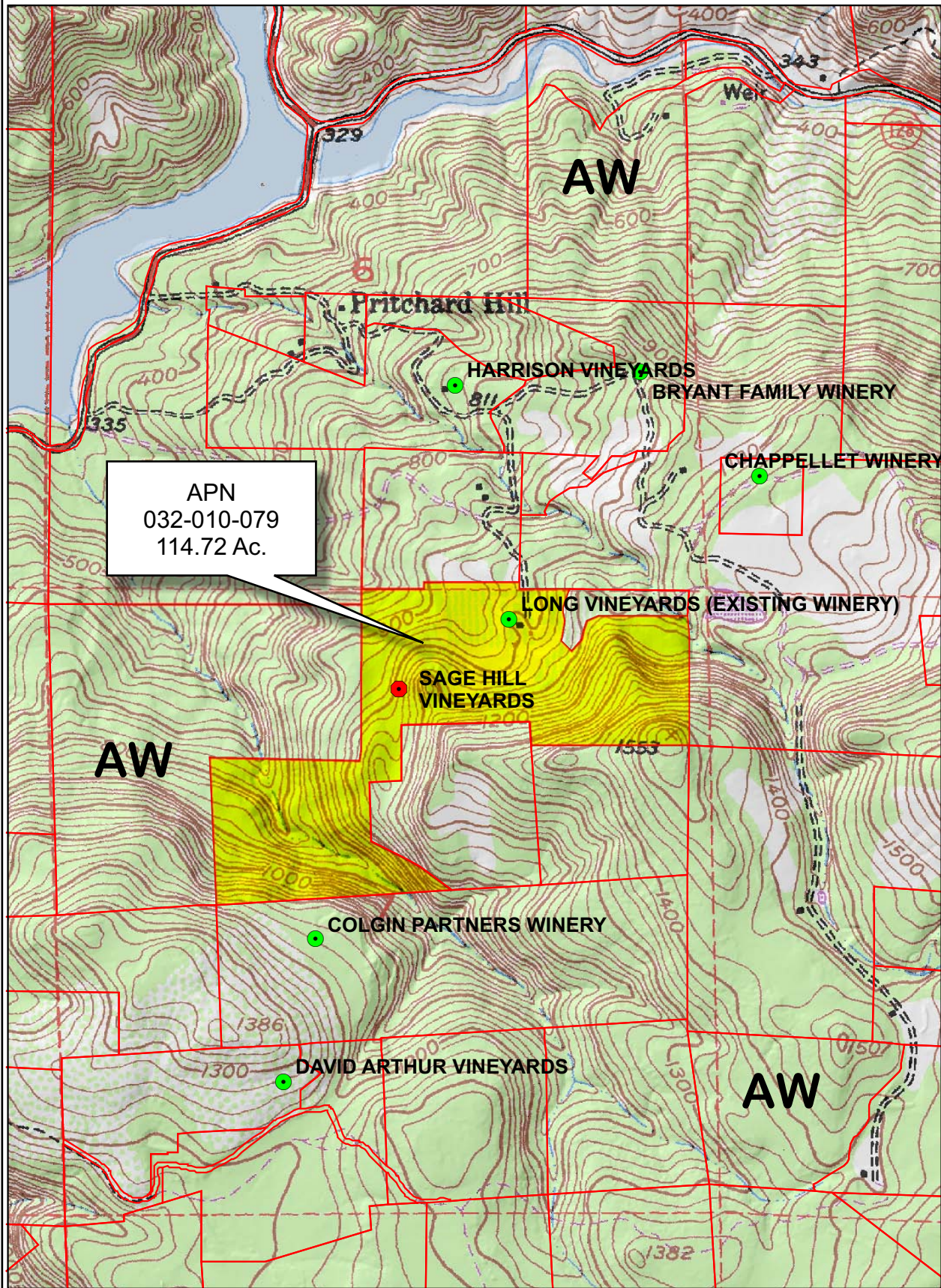
- CITIES
- URBAN RESIDENTIAL
- RURAL RESIDENTIAL
- COMMERCIAL
- INDUSTRIAL
- PUBLIC - INSTITUTIONAL

SCALE IN MILES



APN
032-010-079
05-20-2008
8D UP

SAGE HILL VINEYARDS

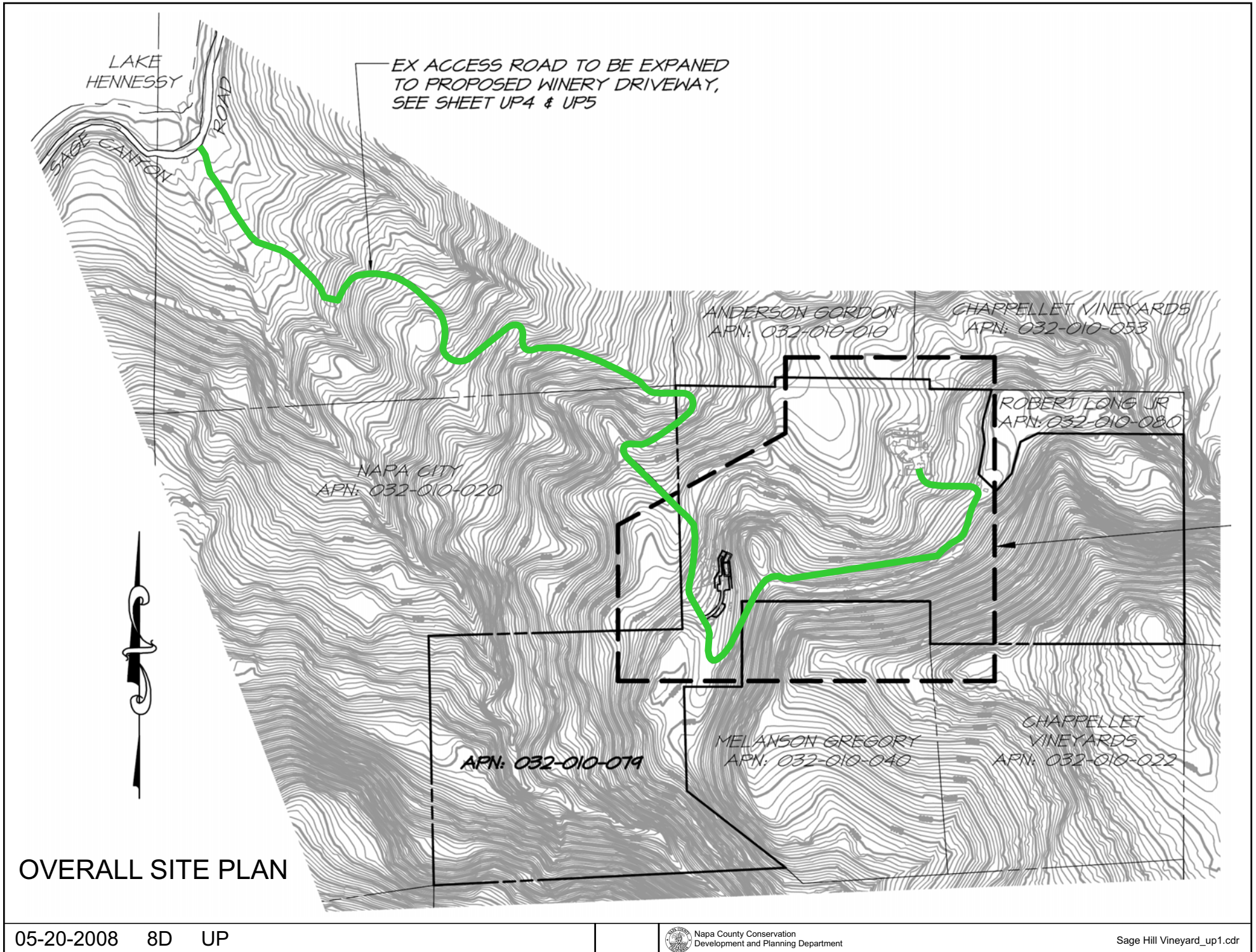


Legend

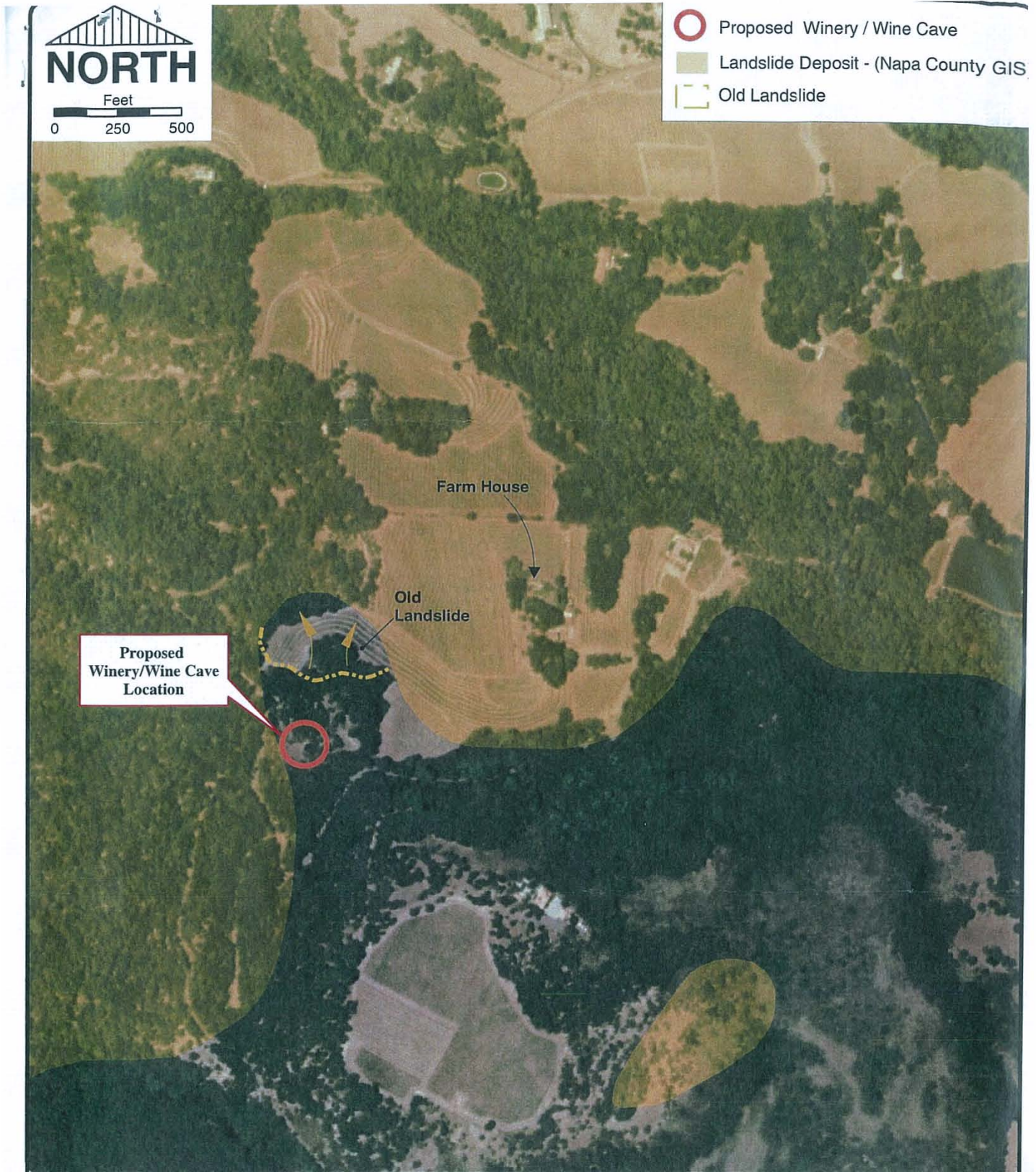
- Wineries in Vicinity**
- Producing
 - Approved
 - Pending
 - Zoning
 - Parcels

0 600 1,200 2,400 3,600 4,800 Feet

SAGE HILL VINEYARDS



SAGE HILL VINEYARDS



CONDOR EARTH TECHNOLOGIES, INC.
 21663 Brian Lane
 P.O. Box 3905
 Sonoma, CA 95370
 (209) 532-0361
 fax (209) 532-0773
 www.condorearth.com

Job No. 4986
 Published Date 26 NOV. 2007
 Scale AS SHOWN
 Drawn JDM Chk'd MP

SAGE HILL VINEYARDS
 NAPA COUNTY, CALIFORNIA

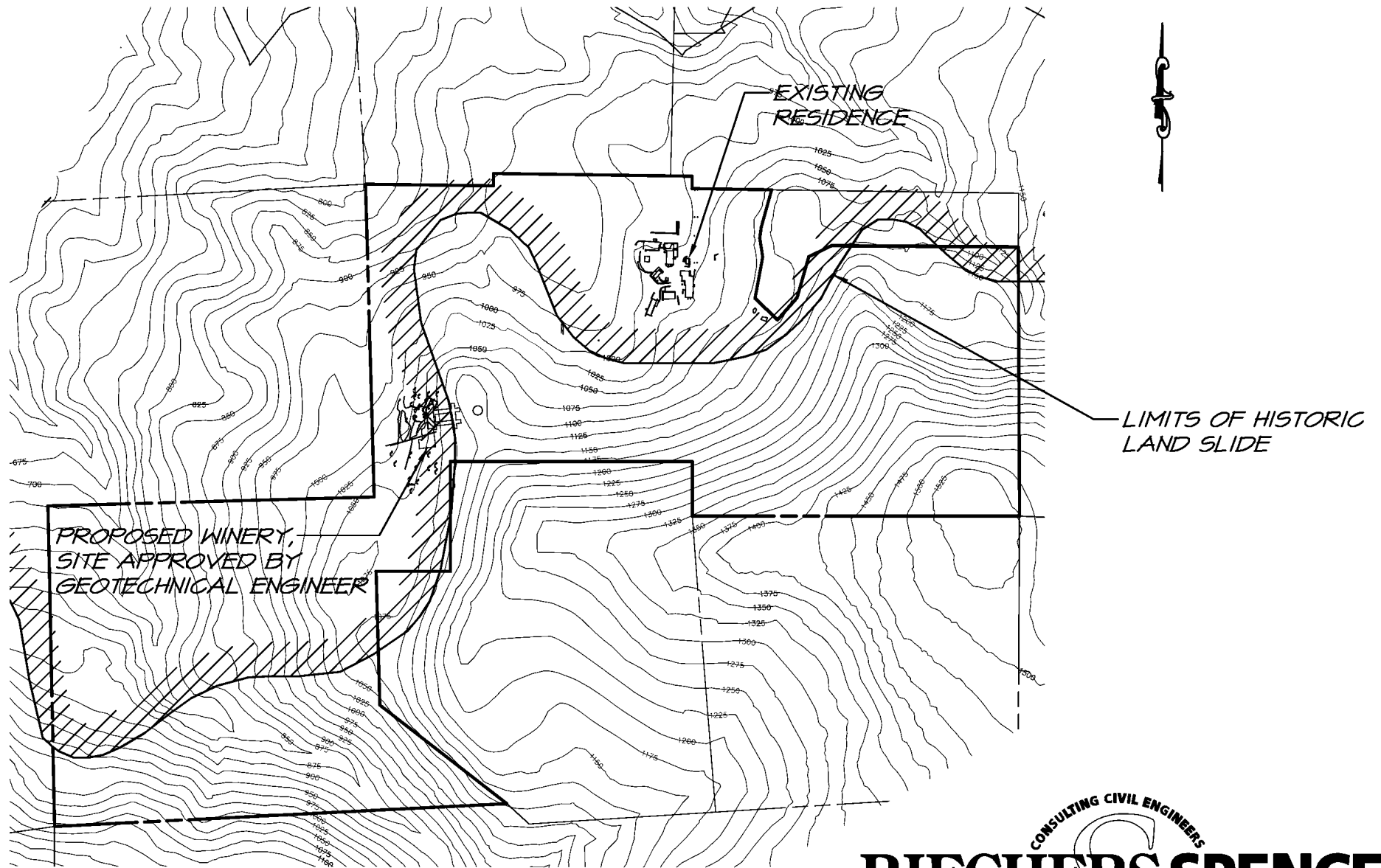
FIGURE 1

File No. 4986F1.mxd

T:\Geologic\Landslide\Maps\4986F1.mxd

LANDSLIDE MAP

SAGE HILL VINEYARDS



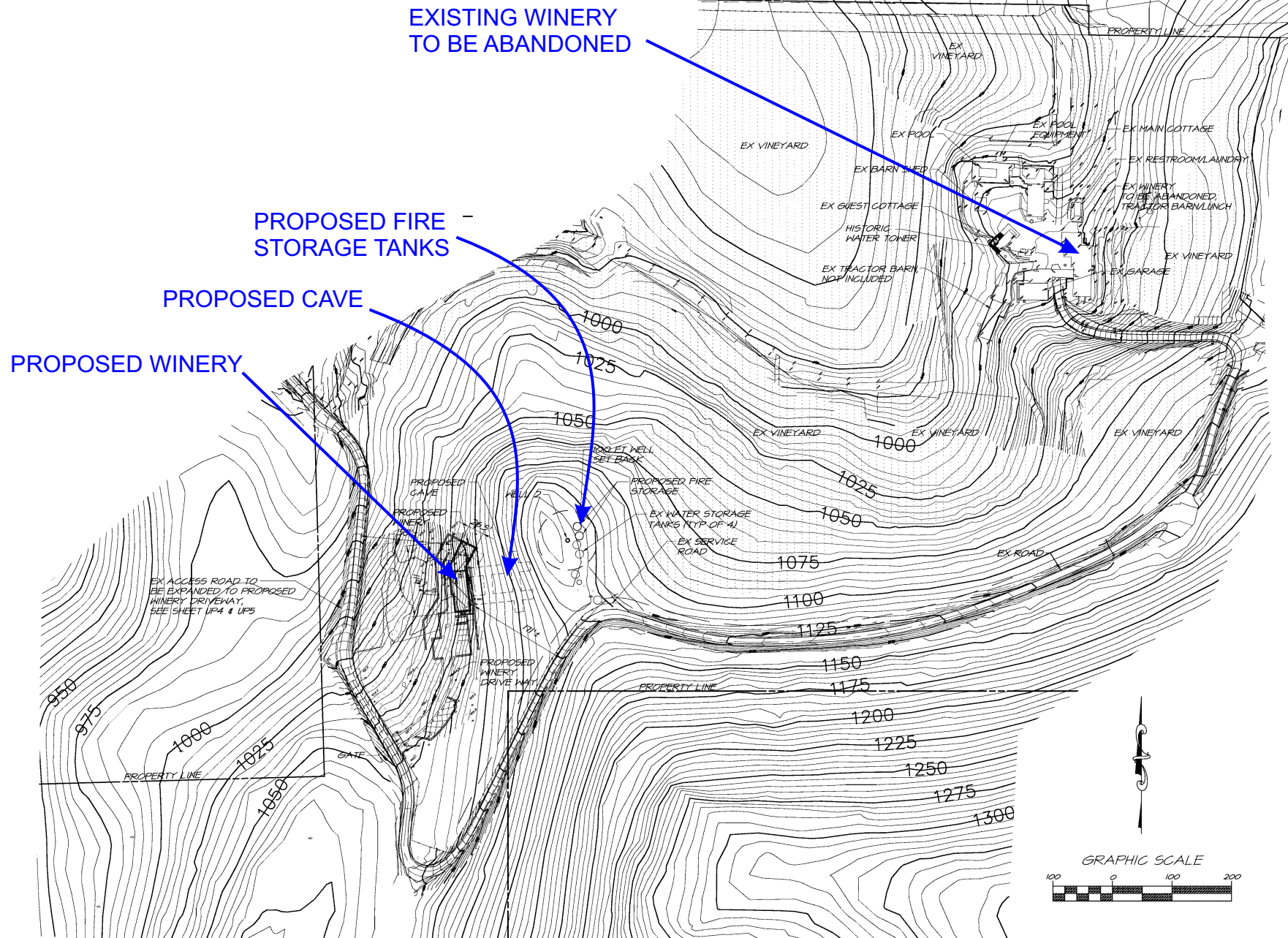
SITE PLAN LANDSLIDE EXHIBIT

CONSULTING CIVIL ENGINEERS
RIECHERS SPENCE
ASSOCIATES
PLANNERS & SURVEYORS

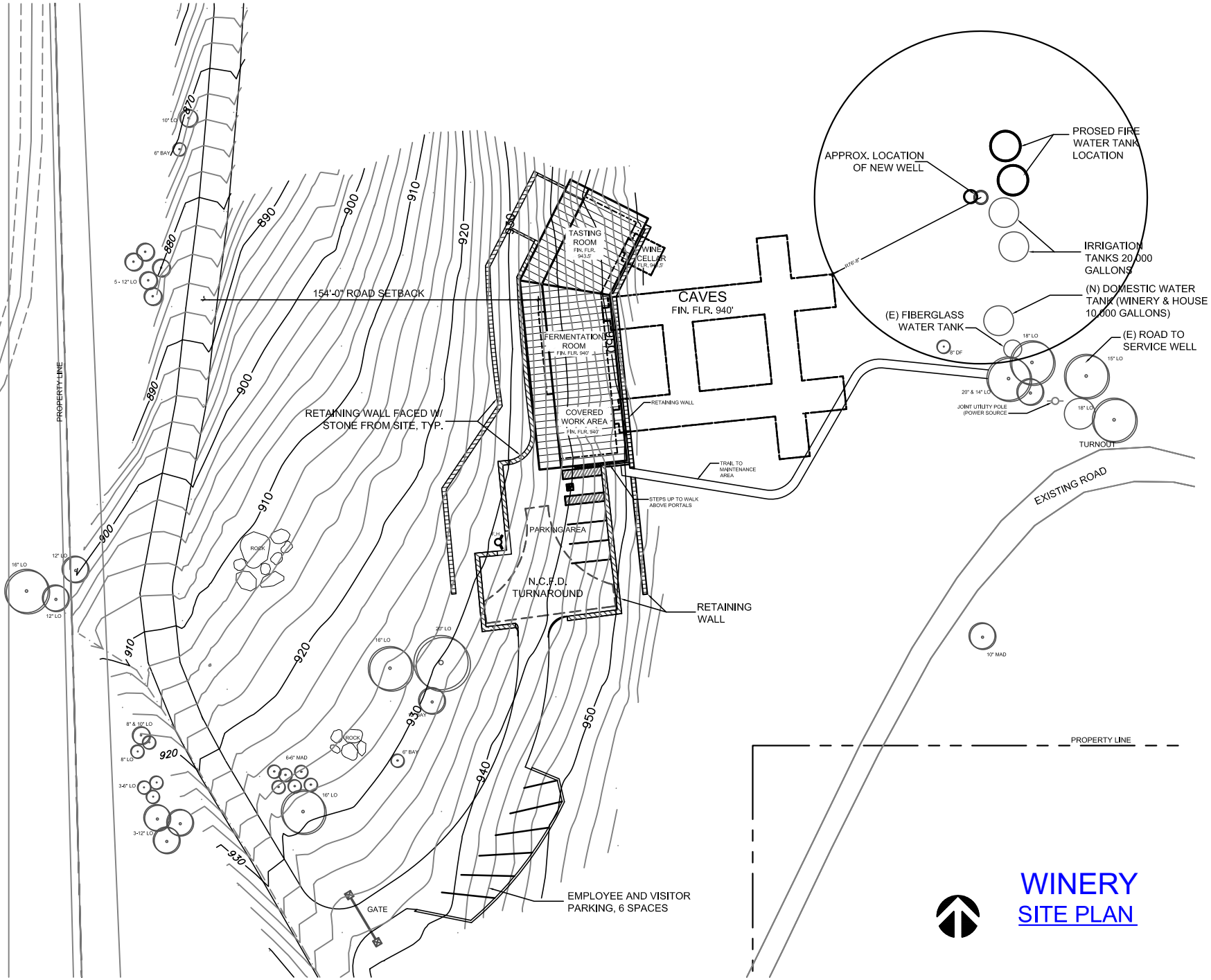
1541 Third Street
Napa, California 94559

v 707.252.3301
f 707.252.4966

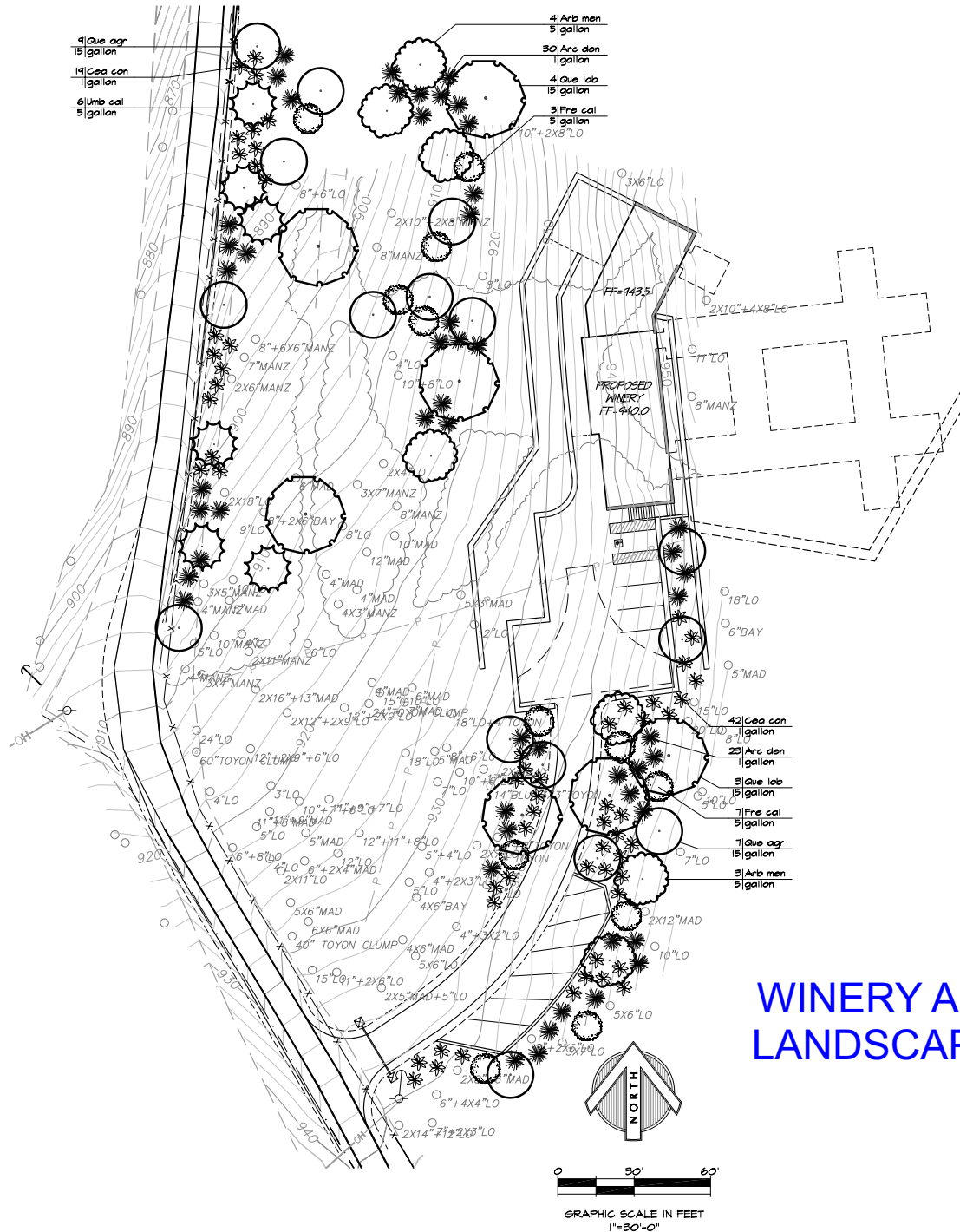
SAGE HILL VINEYARDS



SAGE HILL VINEYARDS



SAGE HILL VINEYARDS

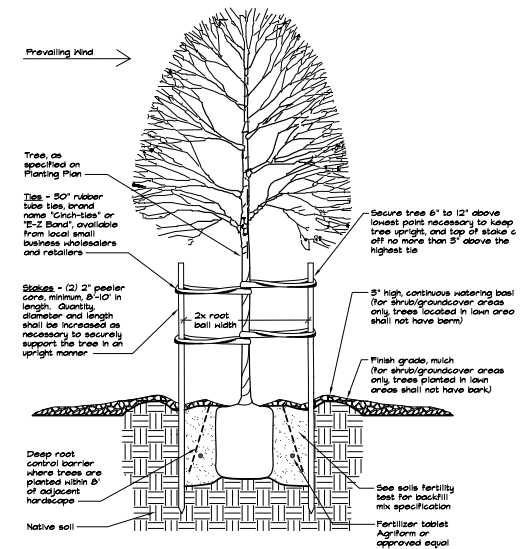


PLANTING LEGEND

SYMBOL	BOTANICAL NAME	COMMON NAME	QUANTITY	SIZE
TREES				
Arb men	Arbutus menziesii	Madrone	7	5 Gallon
Que agr	Quercus agrifolia	Live Oak	16	15 Gallon
Que lob	Quercus lobata	Valley Oak	7	15 Gallon
Umb cal	Umbellularia californica	California Bay	6	5 Gallon

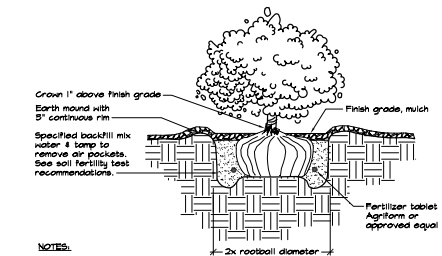
SHRUBS AND VINES

Arc den	<i>Arctostaphylos densiflora</i> 'Howard McMinn'	Vine Hill Manzanita	53	1 Gallon
Cea con	<i>Ceanothus 'Concha'</i>	Wild Lilac	61	1 Gallon
Fre cal	<i>Fremontodendron 'California Glory'</i>	Flannel Bush	12	5 Gallon



- NOTES:**
1. Root ball shall rest on undisturbed soil.
 2. Plant tablets shall be equally spaced around root ball. The number of tablets shall be 4 for 15 gallon and 6 for 24" box, or as specified in the soils fertility test recommendations.
 3. Contractor shall water planting pit thoroughly following planting.
 4. Trees shall be staked parallel with the direction of the prevailing wind.
 5. See Planting Notes on this sheet for mulch specification.

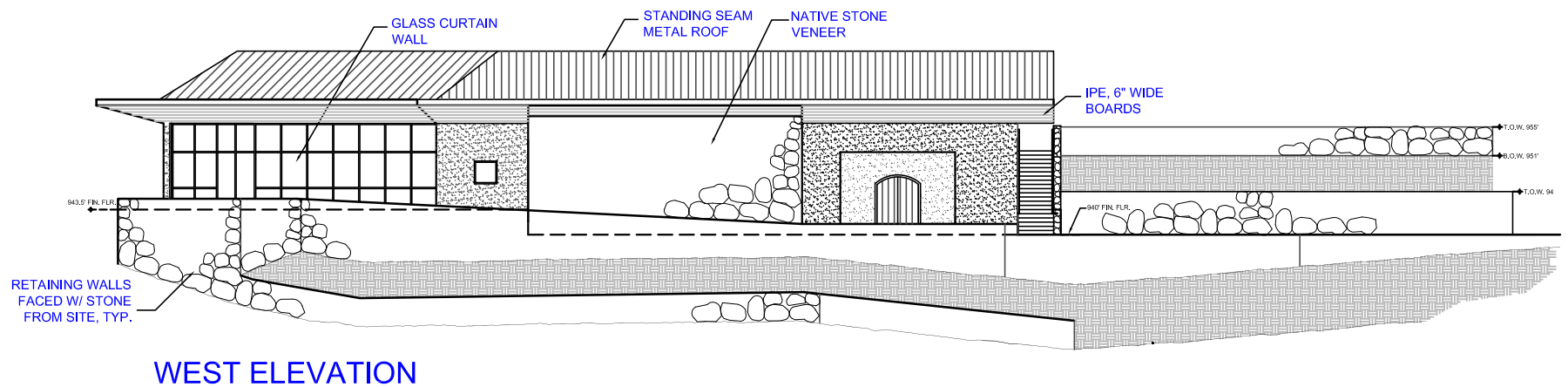
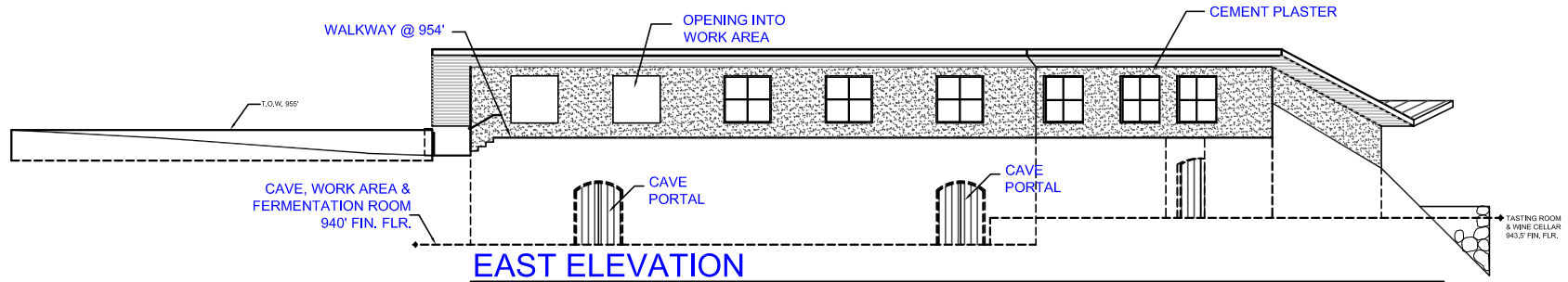
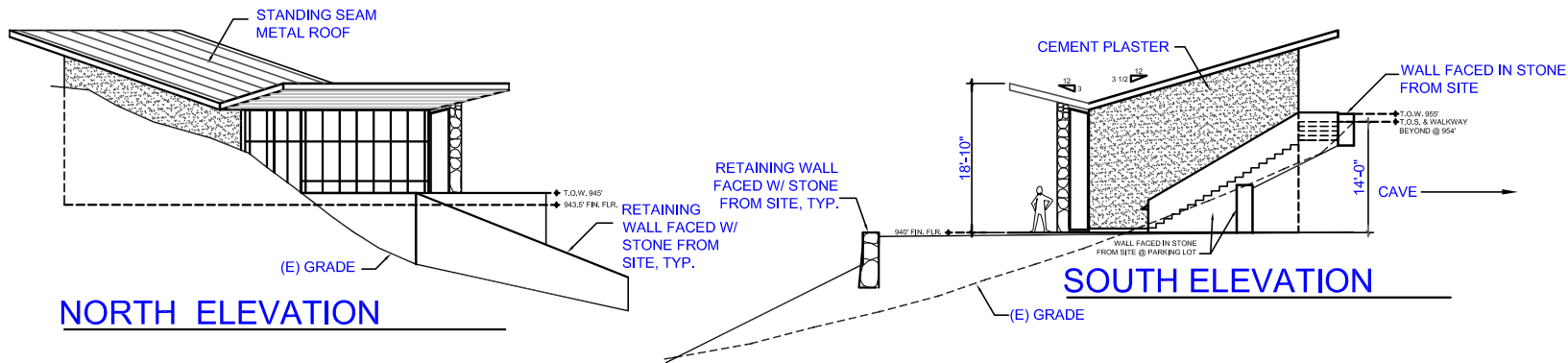
② TREE PLANTING & STAKING
NOT TO SCALE



- NOTES:
1. Root ball shall rest on undisturbed soil.
 2. Plant tablets shall be equally spaced around root ball. The number of tablets shall be 1 for 4" pot or liner, 2 for 1 gallon, 3 for 5 gallon, and 4 for 15 gallon, or as specified in the soils fertility test recommendations.
 3. Contractor shall water planting pit thoroughly following planting.
 4. See Planting Notes on this sheet for mulch specification.

3 SHRUB/GROUNDCOVER PLANTING
NOT TO SCALE

SAGE HILL VINEYARDS

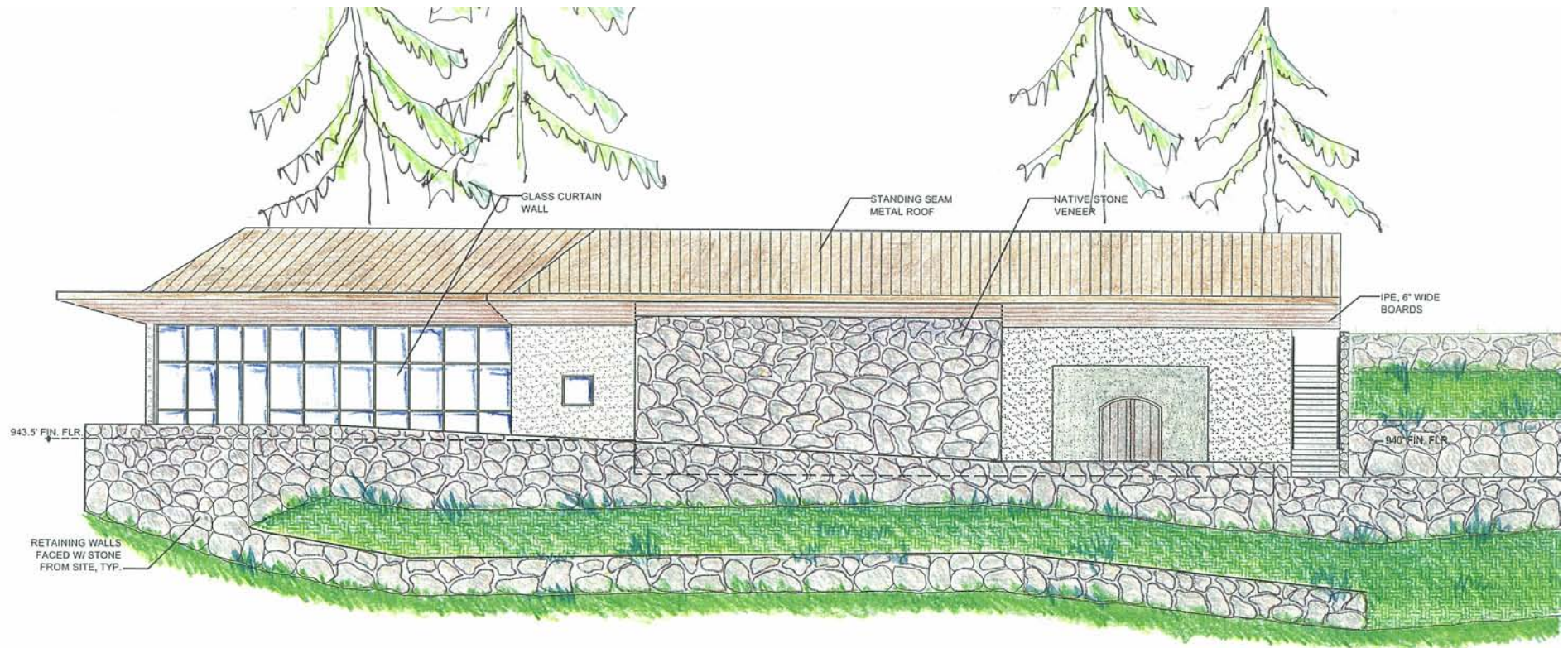


ELEVATIONS

SAGE HILL VINEYARDS



PANORAMA VIEW



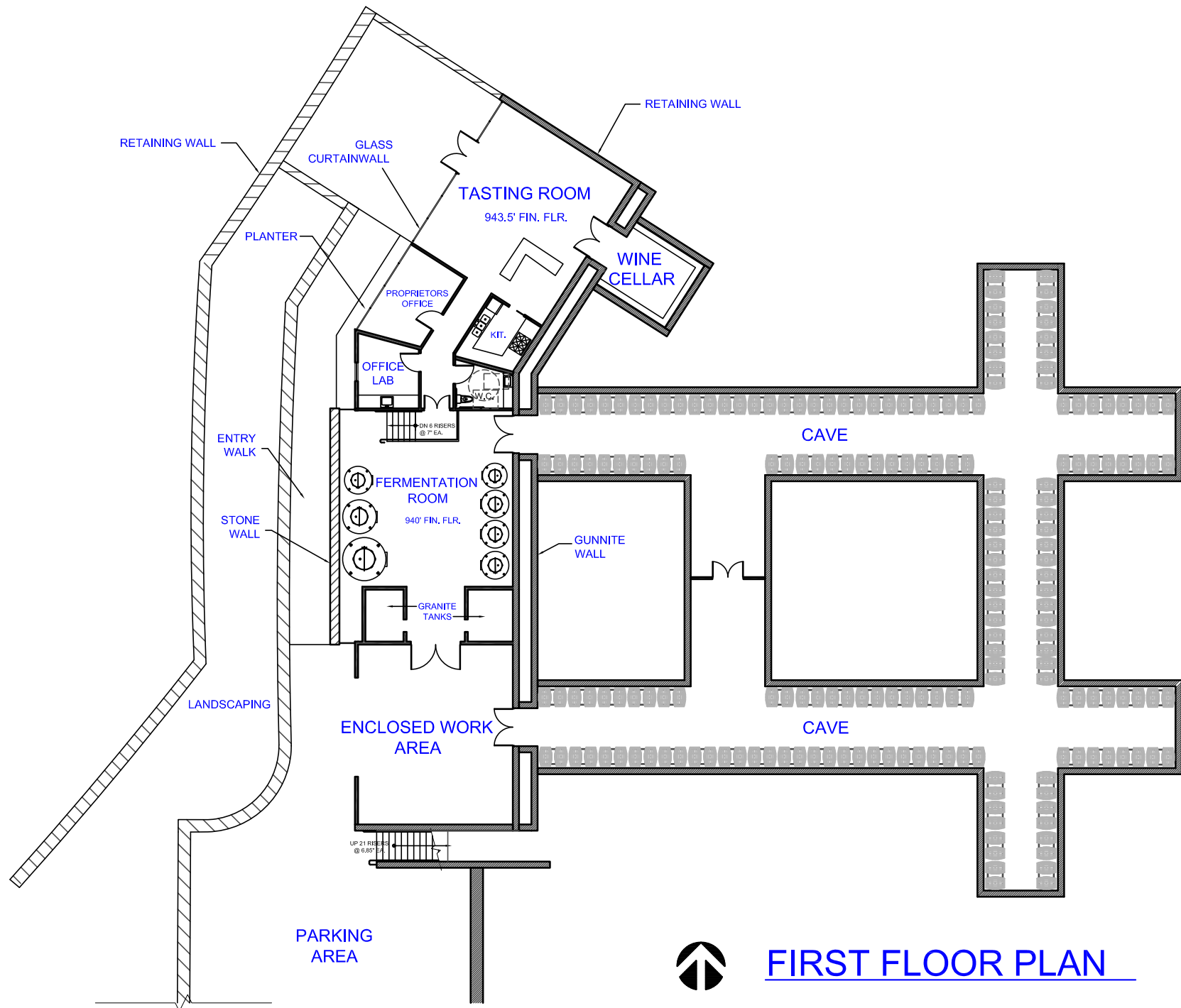
WEST ELEVATION

SAGE HILL VINEYARDS



ENTRY SIMULATION

SAGE HILL VINEYARDS



FIRST FLOOR PLAN

SAGE HILL VINEYARDS



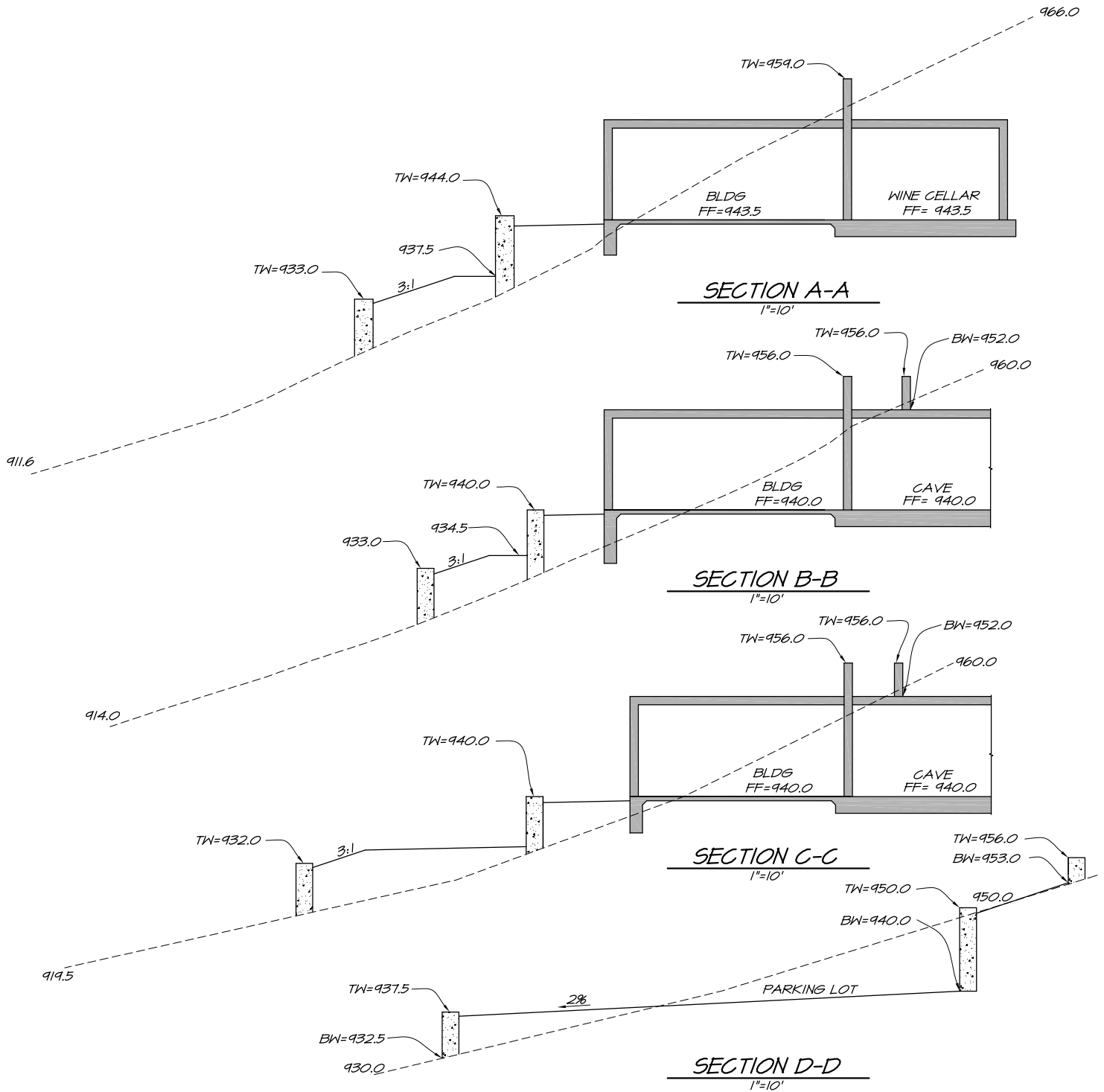
AERIAL SIMULATION

SAGE HILL VINEYARDS

VIEW FROM
ROAD SIMULATION



SAGE HILL VINEYARDS



EARTHWORK ESTIMATES

LOCATION / ITEM	CUT (CY)	FILL (CY)
CAVE	2230	-
WINERY	50	-
ROADWAY	-	320
SUBTOTAL	1960	-
VINEYARD ROAD*	-	1960
TOTAL	0	0

* VINEYARD ROADS ARE CAPABLE OF ACCEPTING EXCESS VOLUMES AND CAN BE ADJUSTED TO BALANCE THIS ESTIMATES BASED UPON THE PLAN PROVIDED HEREIN.

SLOPE ANALYSIS

SECTION	UP ELV	LOW ELV	DIST	SLOPE
A-A	966.0	911.6	120.0	45%
B-B	960.0	914.0	104.6	44%
C-C	960.0	919.5	106.4	38%
D-D	950.0	930.0	74.0	27%
AVERAGE CROSS SLOPE				39%