



**Presentation to Napa Sanitation District  
October 6, 2021**



# THE GOAL: A 47 MILE SAFE & SCENIC TRAIL



**VALLEJO FERRY TERMINAL**

Paved walking & biking  
path along the spine of  
the Napa Valley floor  
(Photo courtesy of Visit Vallejo)



**CALISTOGA, CALIFORNIA**





# WHO WE ARE

The Napa Valley Vine Trail Coalition is a 501(c)3 **nonprofit founded in 2008** to spearhead the creation of a 47-mile-long walking and cycling path between the Vallejo Ferry and Calistoga.

**When completed** the Vine Trail will connect two counties, five cities, one town and two regional trails (the Bay Area Ridge Trail and the San Francisco Bay Trail).

**The Mission of the Coalition** is to physically, artistically and culturally connect the Napa Valley with a safe healthy, and beautiful walking and biking trail.

**The Board of the Coalition** is comprised of 28 organizations representing hospitality, tourism, agriculture, land conservation, transportation, environmental, education, arts, health and public safety.



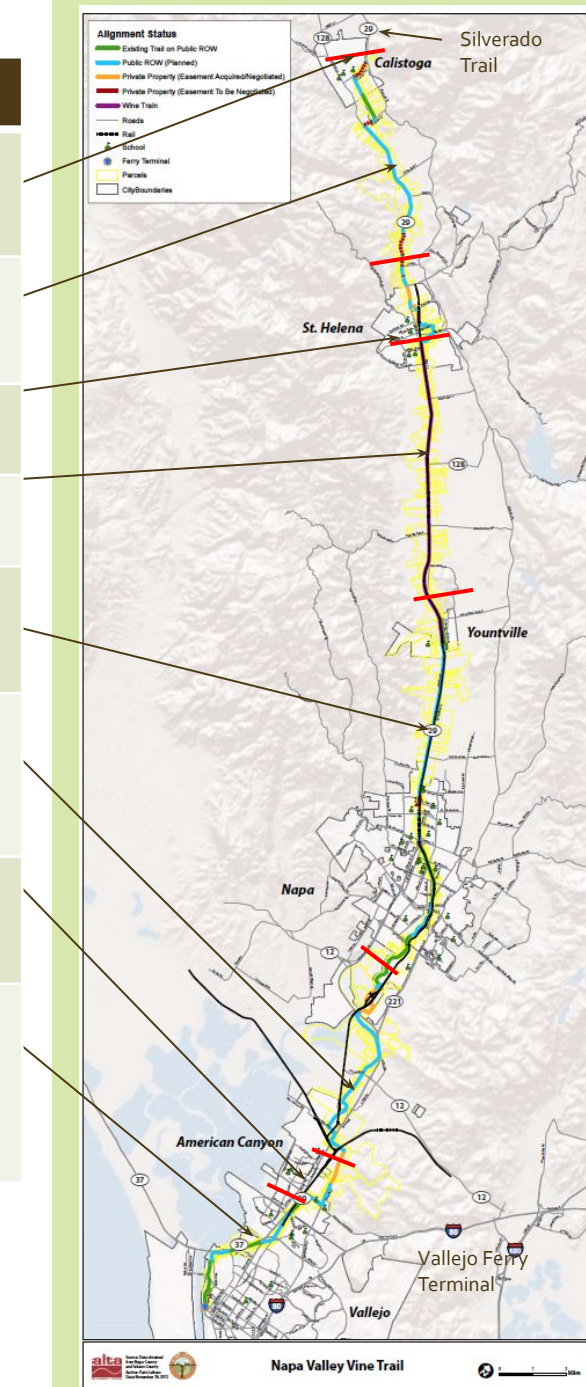
# PROJECT STATUS

Complete  
In Process  
Seeking Funding  
Remaining

Section	Miles	Agency Partners/Status	Schedule
Calistoga (Lincoln Ave to Silverado Trail)	0.25 C 0.45	City of Calistoga/NVVTC/Developers. Sections completed in front of Indian Springs Resort and Calistoga Motor Lodge.	Ongoing
St. Helena (Pratt Ave) –Calistoga (Lincoln Ave)	1.6 C 7-3	NVTA/ Cities of St Helena and Calistoga/ County/NVVTC. In Final Design and Environmental approvals.	Construction 2021-22
St Helena City Connection (Sulphur Springs Ave to Pratt Ave)	2.2	City of St Helena/NVVTC Study prepared	TBD
Yountville (Madison St) to St. Helena (Sulphur Springs Ave)	8.2	County/NVVTC Feasibility Study and mapping completed.	Request for ATP Funds
Oak Knoll (Kennedy Park to Yountville)	12.0 C 0.5	NVTA/County/City of Napa and Town of Yountville/NVVTC. Half mile Soscol Gap being bid out 2021	Completed 2016
American Canyon (Watson Ranch) to Napa (Kennedy Park)	1.4 C 6.9	County/City of American Canyon/City of Napa/Developers/NVVTC County section Tower to Airport completed, Watson Ranch to construct 1 mile of Vine Trail.	Ongoing
American Canyon (Veterans Memorial Park to Watson Ranch)	2.3 C	City of American Canyon	Complete
Vallejo (Ferry Terminal) to American Canyon (Veterans Memorial Park)-	2.4 C 2.9	Solano Transportation Authority/City of Vallejo/Bay Trail/Vine Trail. Environmental approved. Final design in progress for section between Wilson Ave and American Canyon Veterans Memorial Park.	2022

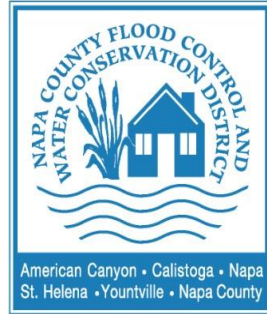
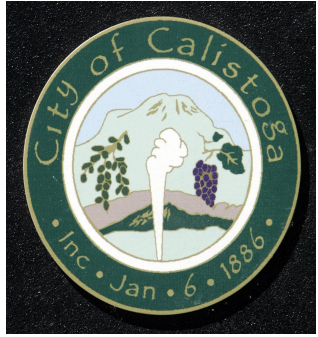
TOTAL 48.6 MILES

Completed 20.15 miles. In progress 10.7 miles.  
Grant applied for 8.2 miles TBD 9.55 miles





# PUBLIC AGENCY PARTNERS



# PILLARS OF THE VINE TRAIL

1. Transportation
2. Safety
3. Economic Benefits
4. Health Benefits
5. Cultural & Community Connections





1

# TRANSPORTATION: VINE TRAIL USE

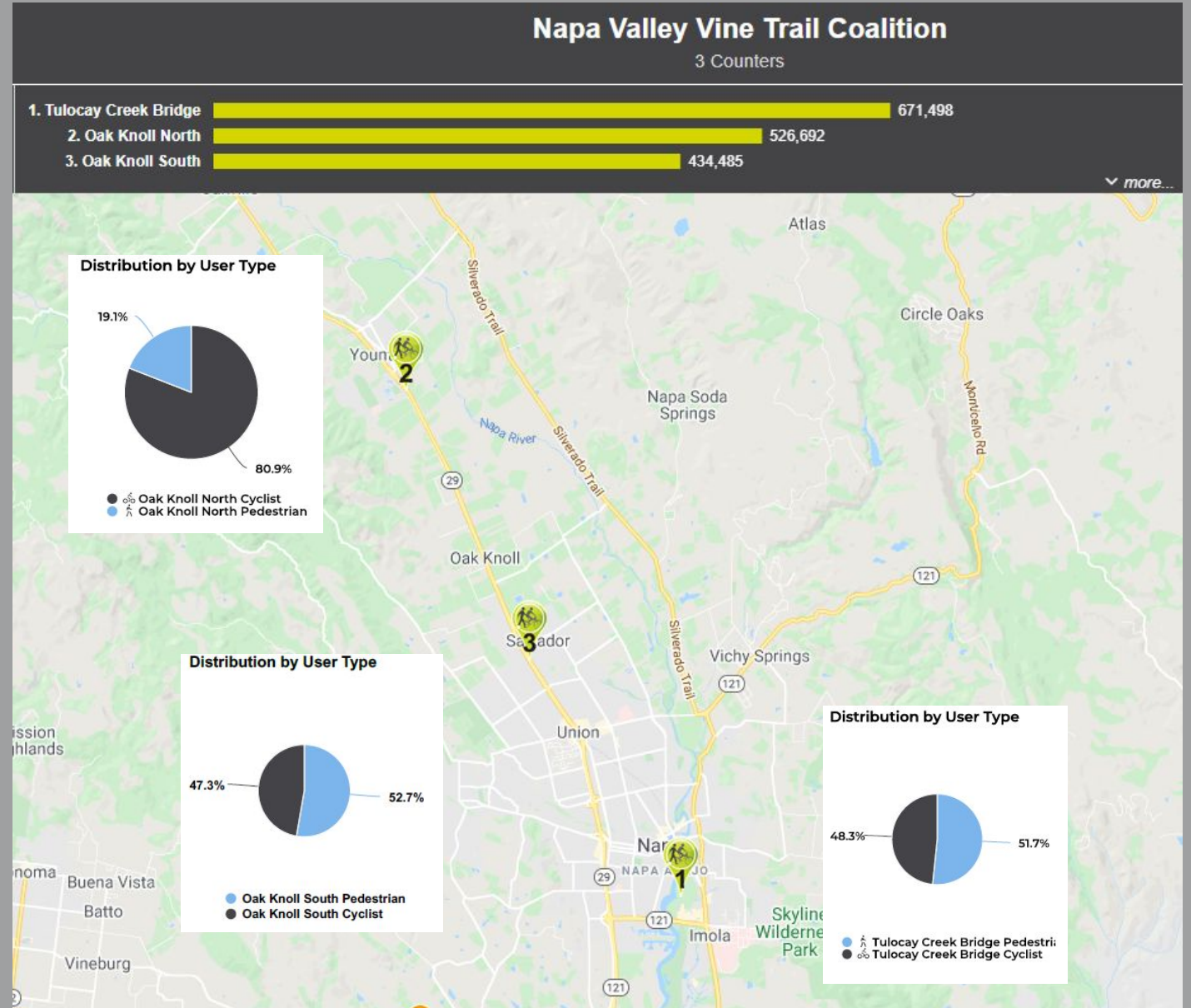
**2017** 348,440

**2018** 352,387

**2019** 358,852

**2020** 522,933\*  
(\*46% increase)

**Average:**  
63% Cyclists  
37% Pedestrians





# 1

## TRANSPORTATION



**Existing Vine Trail daily uses** on the SR29 corridor between South Napa and Yountville are equivalent to 5% of Average Daily Trips in that corridor.



**116 Wineries** within 1 mile of Vine Trail, hosting 3.6 million guests per year and employing over 1800 employees.



**26,500 students** attend schools and colleges within 0.5 mile of the Vine Trail.



**140 Hotels** with over 5500 rooms and over 2000 employees within a mile of the Vine Trail.



1

# TRANSPORTATION: WHO USES THE EXISTING VINE TRAIL?

Surveys of 1113 trail users (Nov 2017 to June 2019)

LOCALS  
70%

VISITORS  
30%





2

## SAFETY: VINE TRAIL DESIGN STANDARDS

*"Would you let your children ride  
in front of you?"*

Class 1 shared use path

---

10' wide + shoulders

---

Safe for all

---

Art, health and educational  
signage along the route





3

## ECONOMIC BENEFITS NAPA VALLEY TOURISM

3.85 Million visitors (2018)

---

80.8 % Domestic  
19.2% International

---

64.5% Day visitors  
35.5% Overnight stays

---

3.64 Million individuals visited wineries  
between Napa and St Helena in 2014

---

The Vine Trail has seen a steady growth  
in visitors versus locals since 2017, from  
5% to 30% (pre COVID)





# 4

## HEALTH BENEFITS

The following are the annual benefits of the 47-mile Vine Trail project calculated using Caltrans' Cost/Benefit tool for shared use path projects.

Mobility Benefits \$9.1 M

---

Increased Exercise \$2.1 M

---

Recreation Benefits \$9.8 M

---

Reductions in Greenhouse Gas Emissions \$263 K



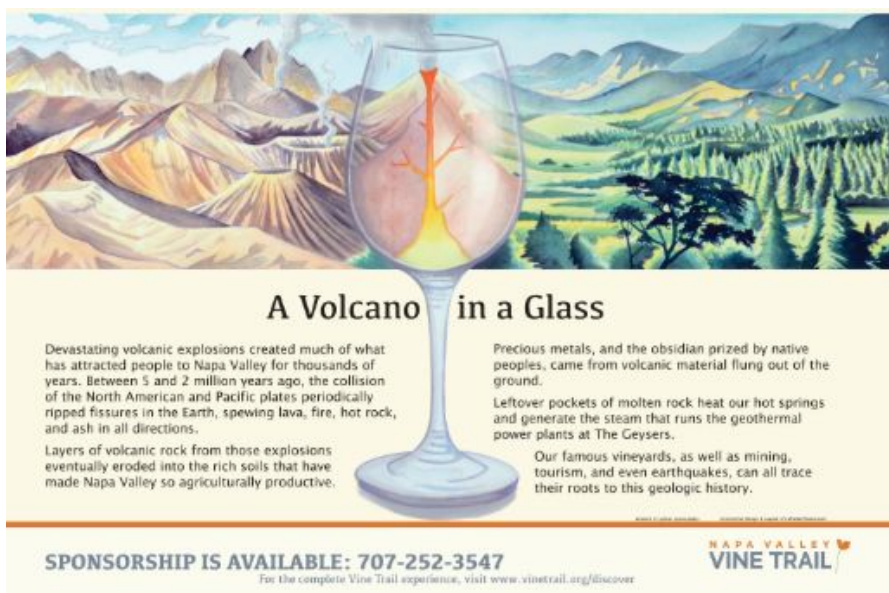


5

# CULTURAL & COMMUNITY CONNECTIONS

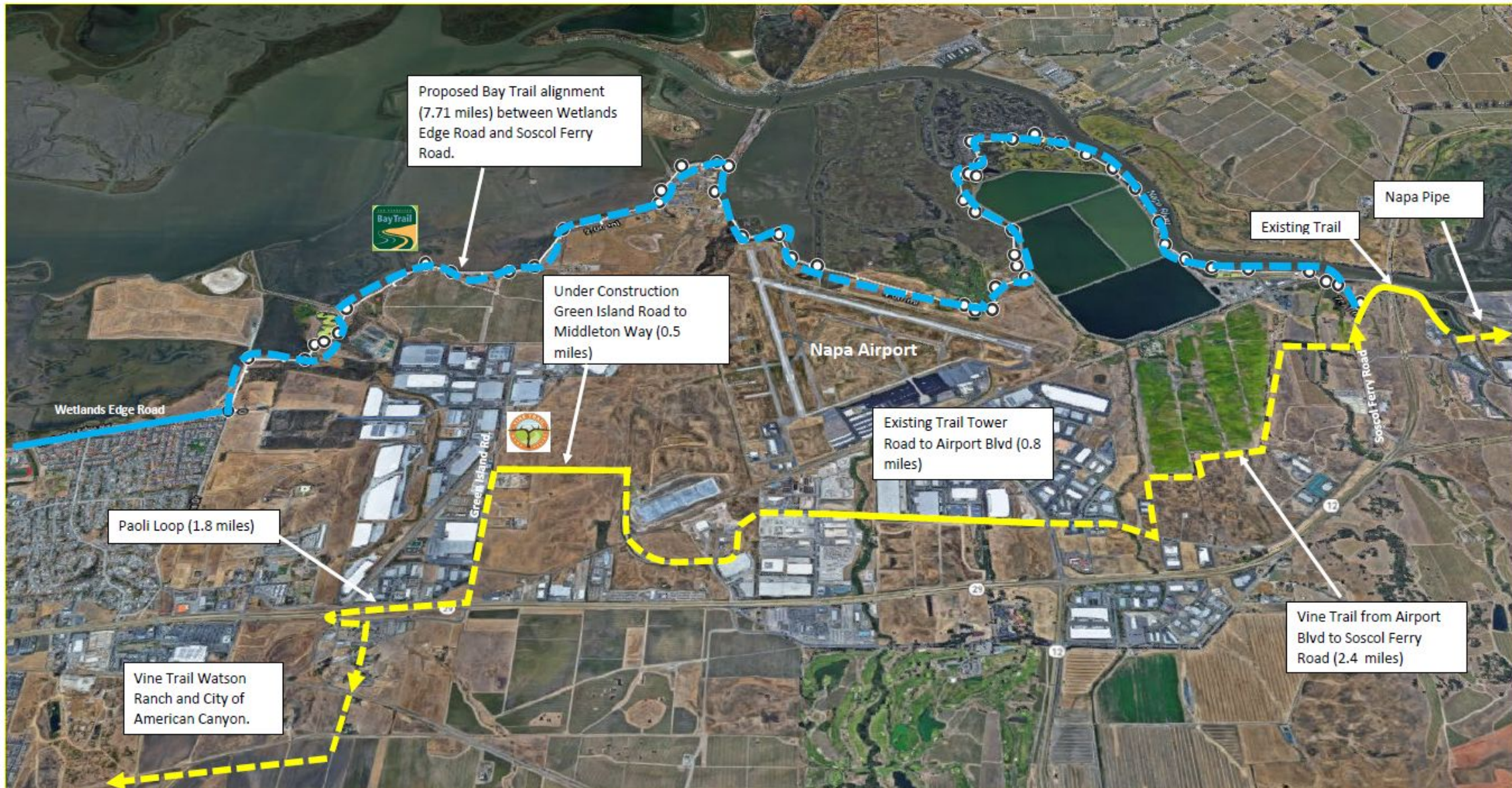
## INTERPRETIVE SIGNS

51 signs planned, 18 installed to date. Audio narrative available on VT Mobile App.



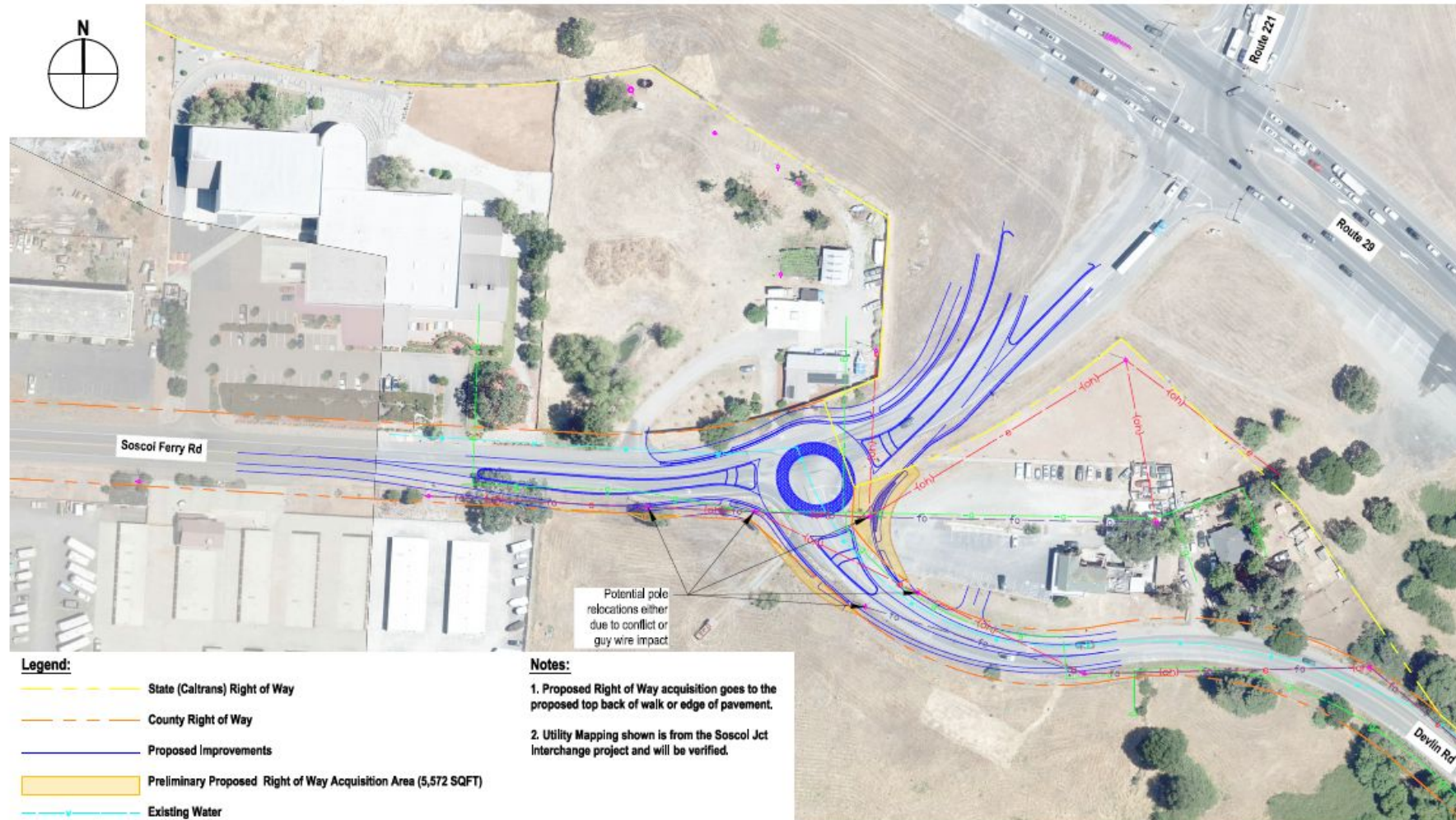


# Vine Trail American Canyon to Napa





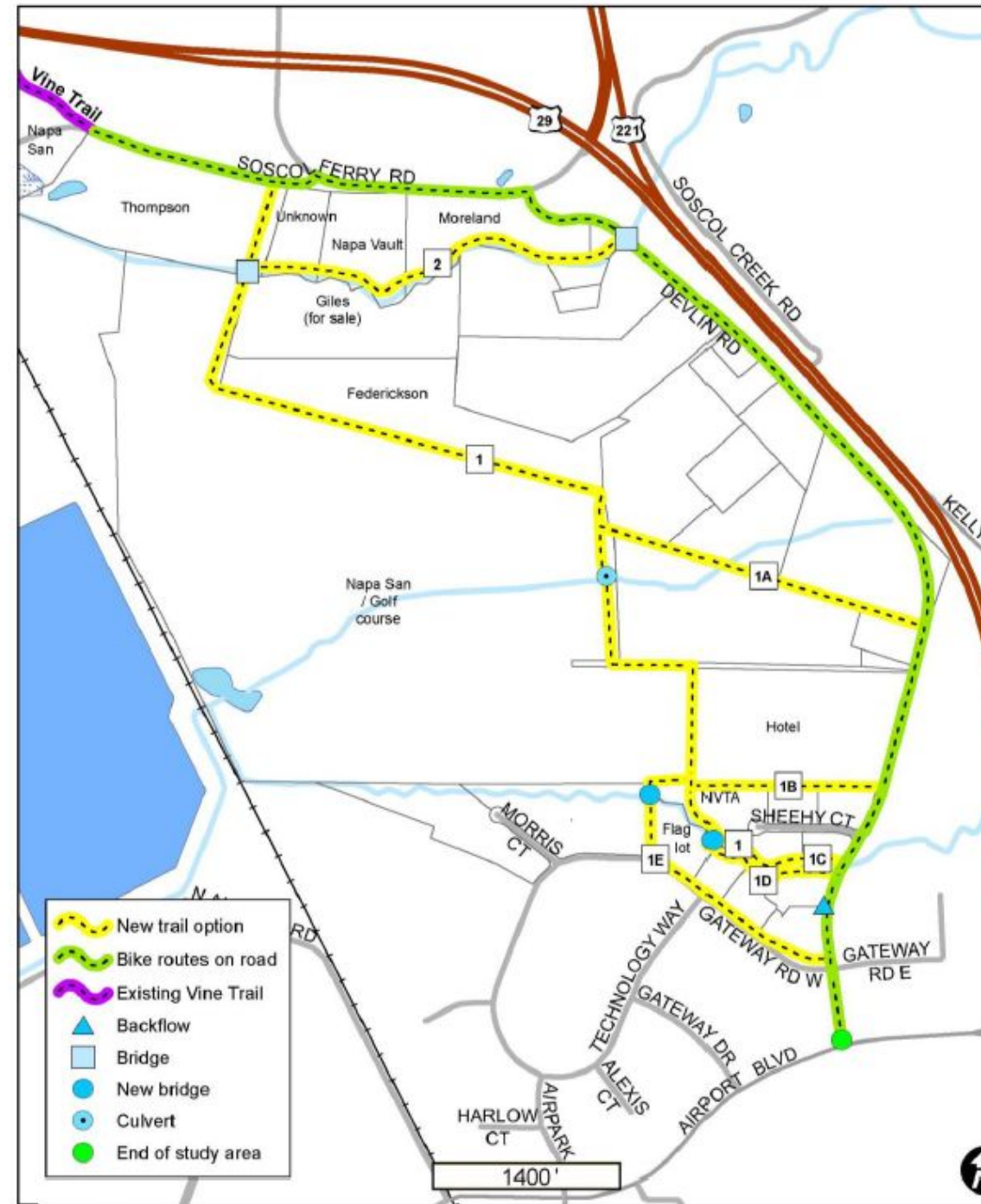
# SR29/Soscol Ferry Road Roundabouts



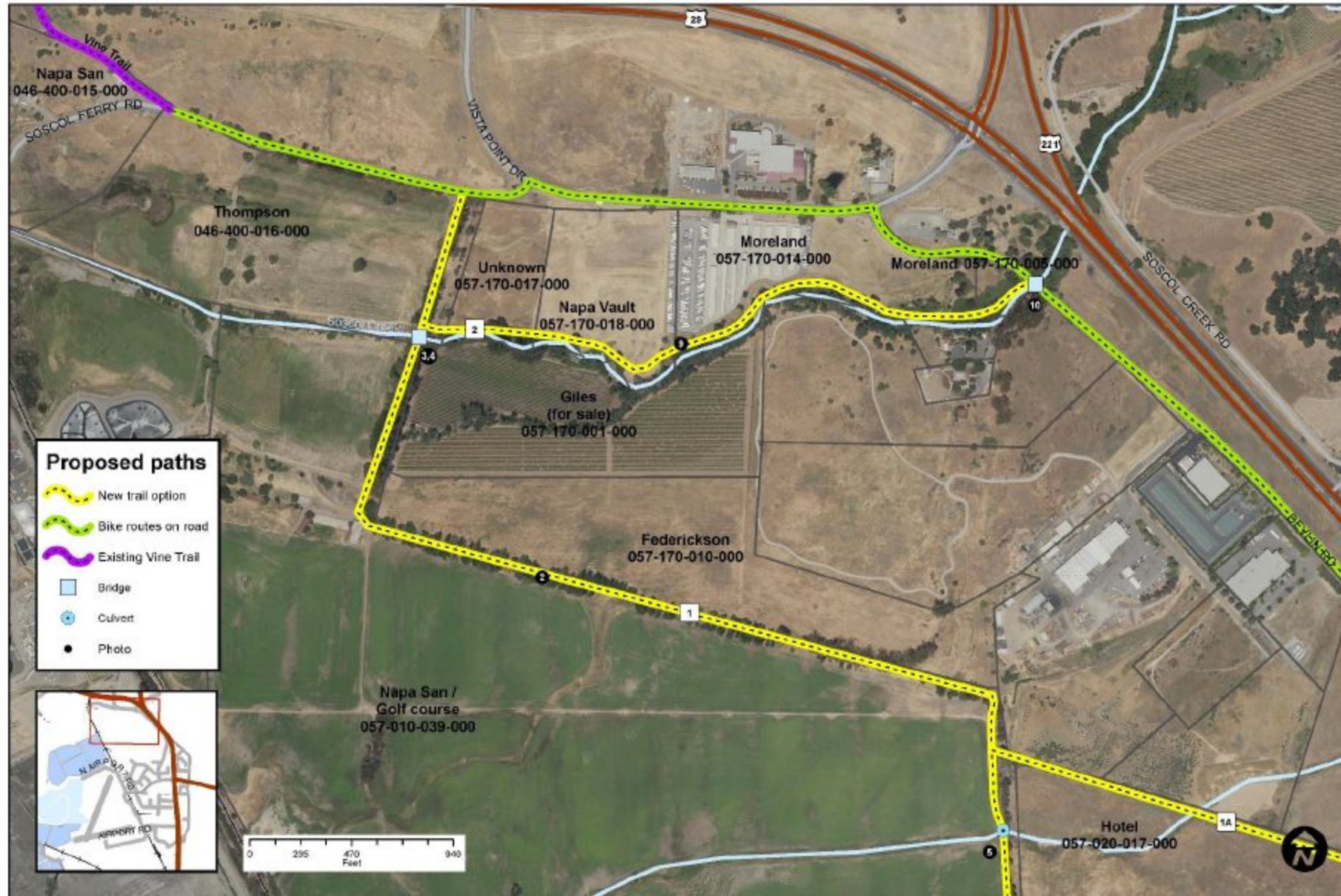
# Devlin Road Options Study by Trailpeople 2016

## Alternatives reviewed

- Connection via levee behind Moreland (Mini Storage) and Napa Vault properties.
- Connections through Montalcino Hotel property. (2 alternatives).
- Connection in corporation existing nature trail along Sheehy Creek.
- Connection to Technology Way



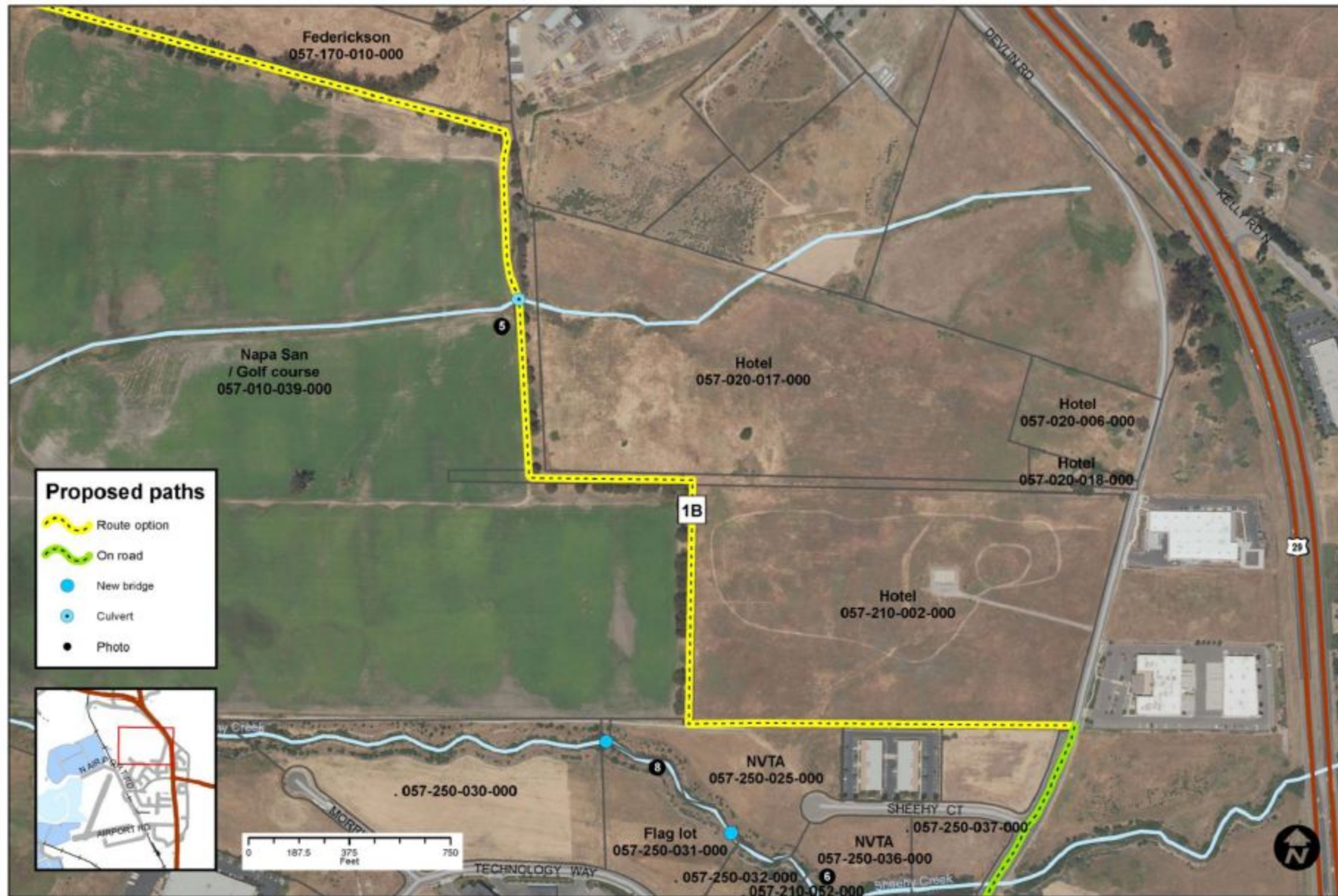




919 First Street, Suite 1  
 Benicia, CA 94510  
 (707) 205-1370  
[www.trailpeople.net](http://www.trailpeople.net)

# North section Napa Vine Trail Connection





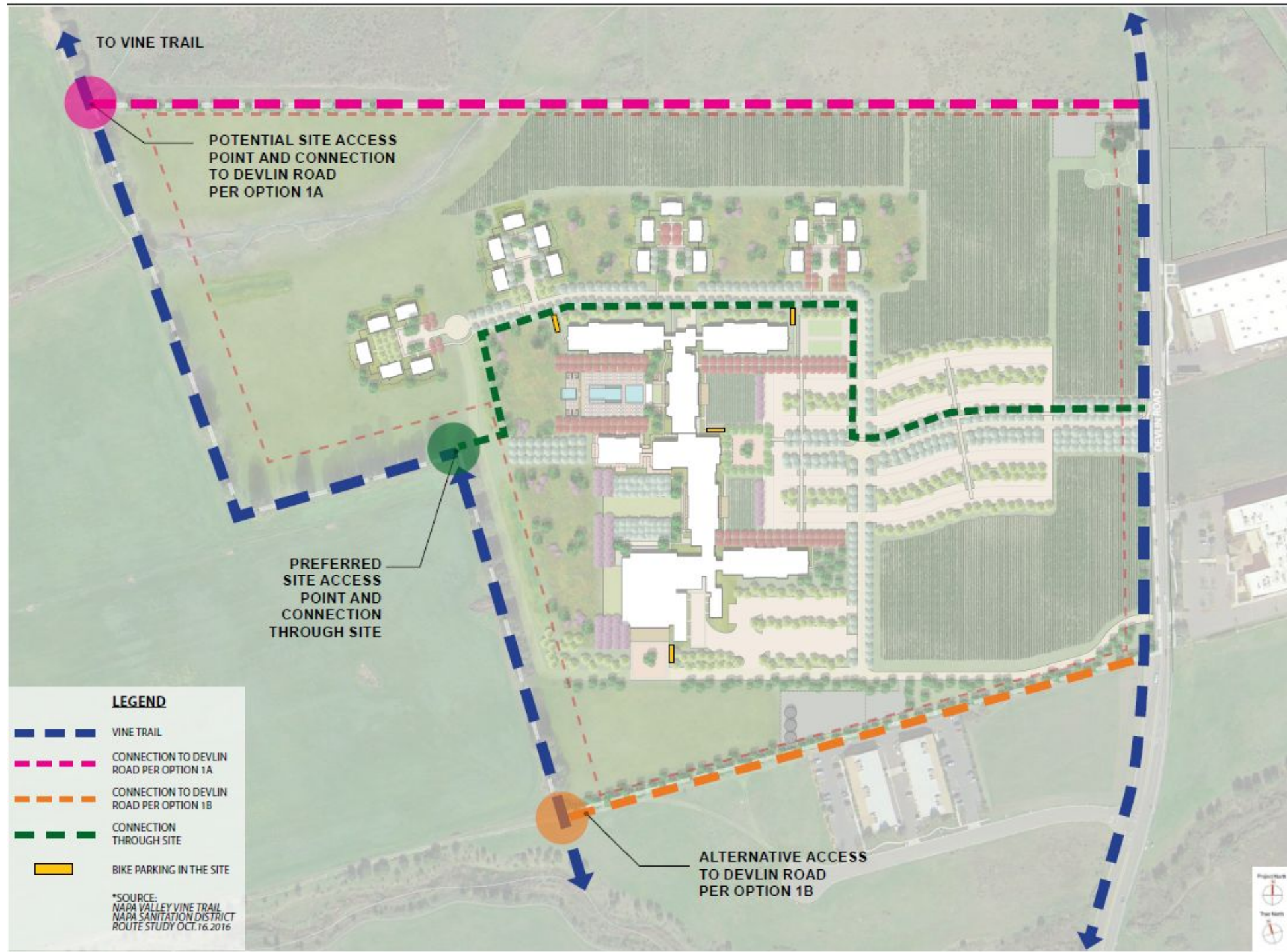
# Option 1B - Hotel South Napa Vine Trail Connection

919 First Street, Suite 1  
Benicia, CA 94510  
(707) 205-1370  
www.trailpeople.net



FILE: SHEEHY TRAIL - 2-17-20 NAPA VINE TRAIL CONNECTION





# Requests of the Napa Sanitation Board

- Easement Agreement between Napa Sanitation District and Napa County for purposes of developing the Vine Trail on Napa Sanitation District's property.
- Easement Width 15' plus 50' setback
- Temporary Construction Easements
- Maintenance Agreement with County/Vine Trail Coalition





# QUESTIONS?

**Philip Sales**  
Executive Director  
Napa Valley Vine Trail Coalition  
707 592 1601  
[psales@vinetrail.org](mailto:psales@vinetrail.org)

