



**Napa Sanitation District**

**General Manager's Report**

**for**

**August 2021**

Contents:

- a. Transmittal Memo
- b. Budget Status and Cash Summary
- c. Key Information Graphs – Fund Balances, Treatment Plant and Collection
- d. Fund Balances
- e. Development Processing
- f. Construction Inspection
- g. Pollution Prevention
- h. Recycled Water Deliveries
- i. Biosolids Handling
- j. Collection System Maintenance
- k. Treatment Plant Operations
- l. Treatment Plant Maintenance & Laboratory
- m. Capital Project Expenditure Summary



**DATE:** October 6, 2021  
**FROM:** Timothy B. Healy, General Manager  
**SUBJECT:** General Manager’s Report for August 2021

**REGULATORY COMPLIANCE:**

Collection System Compliance:	0 Category 1 SSO’s, 0 Category 2 SSO’s, and 3 Category 3 SSO’s
NPDES Permit (WWTP) Compliance:	Full compliance with all regulations
Air Quality Compliance:	Full compliance with all regulations
Recycled Water Compliance:	Full compliance with all regulations
Biosolids Compliance:	Full compliance with all regulations
Significant Comments:	None

**FISCAL STATUS:**

Period Covered:	July 1, 2021 – August 31, 2021
Percent Fiscal Year:	16.7%
Operating Expenditures to date:	N/A
Historical Expenditures to date:	26.3%
Significant Comments:	Napa County has implemented a new financial system beginning with the new fiscal year 2021/2022. Data from the previous financial system is still beginning migrated to the new system. Reporting functions are also still being evaluated and finalized. Therefore, July and August’s fiscal status is unavailable at this time. Staff anticipates the fiscal status will be available by the next General Manager’s Report for September.

**PERSONNEL:**

Significant events for the month of August 2021 in the Human Resources Department:

New Hires:	None
Separations:	Retirement of Jon Brandow, Collection System Worker III
Promotions:	None
Recruitment Activities:	Recruitment continued for Plant Attendant (vacancy); Administrative Assistant (retirement); and Safety, Training & Fleet Maintenance Officer (resignation).
Injuries:	None

## General Manager's Report

October 6, 2021

Page 2

### **COLLECTIONS:**

Significant events for the month of August 2021 in Collection System Maintenance include:

- The District had 0 Category 1 Sanitary Sewer Overflows (SSO's), 0 Category 2 SSO's and 3 Category 3 SSO's during the month. (A Category 1 is defined as an SSO that reached a drainage channel and/or surface water or; an SSO that reached a storm drainpipe that was not fully recovered and returned to the sanitary sewer system. A Category 2 is defined as an SSO that is equal to or greater than 1,000 gallons that did not reach a surface water. A Category 3 is defined as an SSO that is less than 1,000 gallons that did not reach a surface water. These are usually minor overflows of less than 10 gallons from cleanouts on District laterals that are cleaned by our crews.)
- The repair crew installed 4 cleanouts and repaired 1 cleanout. They also repaired 5 laterals and lined 1 lateral. As well, the repair crew made 1 man hole repair. Additionally, the service response/programs crew completed 120 work orders in support of the grease and odor control program, responded to 40 customer requests for service (15 were NSD problem) and closed out 797 mark and locate request tickets.
- The preventative maintenance crews ran work orders on 128 laterals, cleaned approximately 54,707.9 feet of main line and CCTV inspected 67 laterals. In addition, the CCTV truck televised 31,995.4 feet of mainline and the field inspection crew completed 88 man hole inspections.

### **TREATMENT PLANT:**

Significant events for the month of August 2021 in the Treatment Plant Department:

#### Plant Operations:

- For August 2021, the plant's influent flow was 166.7 MG as compared to last year flow for August 2020 of 164.6 MG
- There was 0.00" rainfall for August 2021 (Carneros Rainfall Center) as compared to 0.02" rainfall for August 2020.
- Pond 4 end of the month recorded level reading was 26.15".
- From January through August 3,084 ACFT or 66% of the annual influent flow was treated and distributed as recycled water.

#### Power Consumption and Production:

- August 2021 power purchased from PG&E was 548 MWH in comparison to August 2020 purchase of 517 MWH.
- Cogeneration unit ran 728 of 744 hours for the month – 97.85% uptime, averaging 317.52 Kw, producing 247 MWH of energy
- Solar generation in August 2021 was 161 MWH, compared to 186 MWH in July and 173 MWH in August 2020.

## General Manager's Report

October 6, 2021

Page 3

### Maintenance:

Significant events for the month of August 2021:

#### Process Maintenance

- Cogeneration unit monthly emission test - in compliance with BAAQMD permit
- Cogen Service:
  - Changed oil & sock filters
  - Replaced pre-air filter and main air filter
- DAF Air Compressor #1/replaced thermal actuator, thermal cage valve and spring thermal valve
- Secondary Clarifier #3/replaced scum pump
- Replaced 12KV fuse on pole #20 at Pond 4
- Hot water pump #1/replaced discharge expansion joint
- Installed loop detector on main gate
- Replaced Cogen jacket water flex joint
- Strain Press/replaced air compressor
- SCADA UPS/updated network interface firmware

#### Projects

- Completed CIP 21715/Rebuild #2 Recycle Motor and Pump

#### Standby Power

- Plant generators ran in standby mode for 2 hours and 26 minutes due to ground fault
- Riverpark, Stonecrest and West Napa operational testing only

#### Influent Pumps

- All pumps operational

### Laboratory:

#### Effluent (EFF-001) Summary

There was no Effluent discharge during the month of August 2021.

#### Influent (INF-001) Summary

Monthly Influent monitoring of all parameters occurred at the required frequencies. The following were notable sampling events:

- August 3, 2021:       Metals, Mercury, Cyanide

**RECYCLING:**

Significant events in the Recycling Department for August 2021 include:

- Recycled water delivered for the month of August 2021 was (189.251 million gallons), as compared to August 2020 (173.443 million gallons) is higher from the previous year due to trucked water and District use. Delivered recycled water volume represents the sum of all use site flow meter consumption values.
- Staff continued land application of biosolids at Jameson Reuse Site.
- Staff approved the connection of two new recycled water connections. One in the MST area and Stanly Resort.

**POLLUTION PREVENTION:**

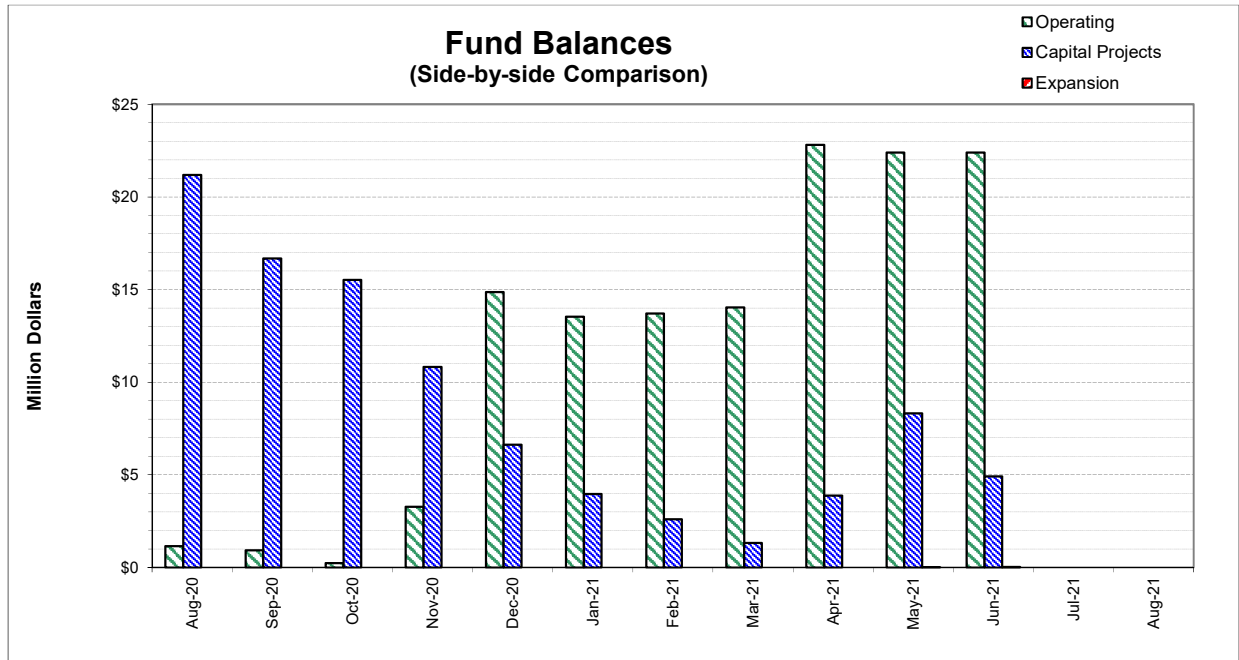
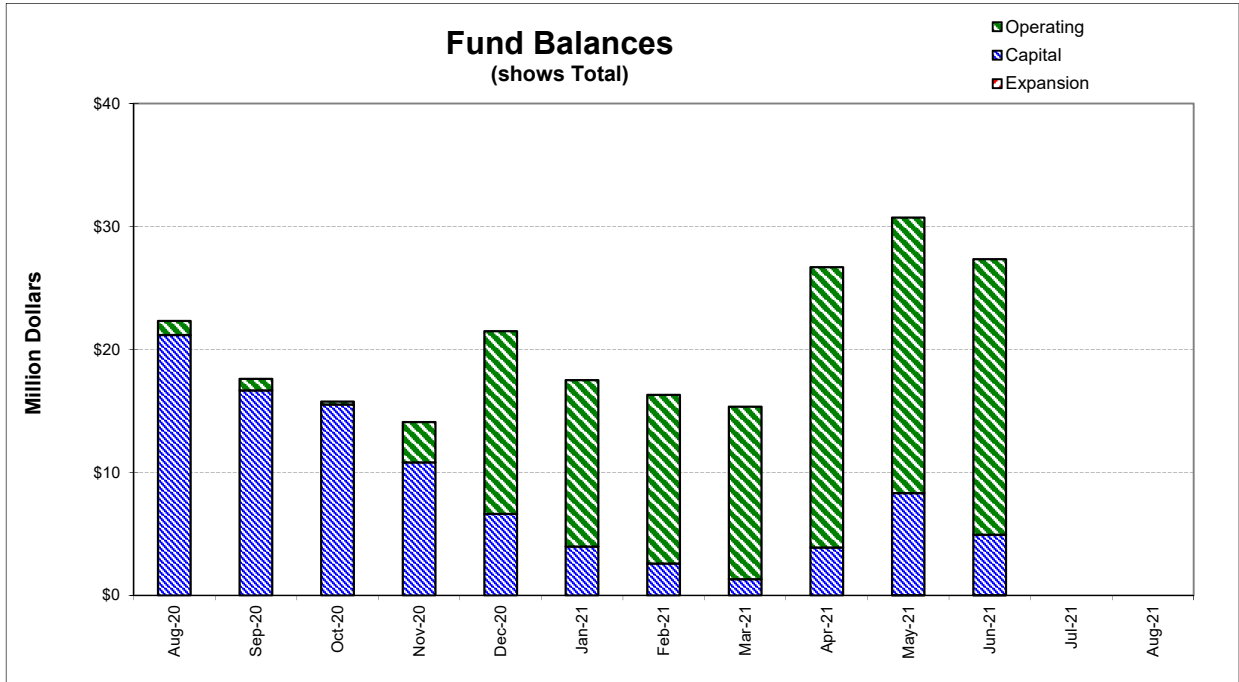
Significant events in the Pollution Prevention and Outreach Division for August 2021 include:

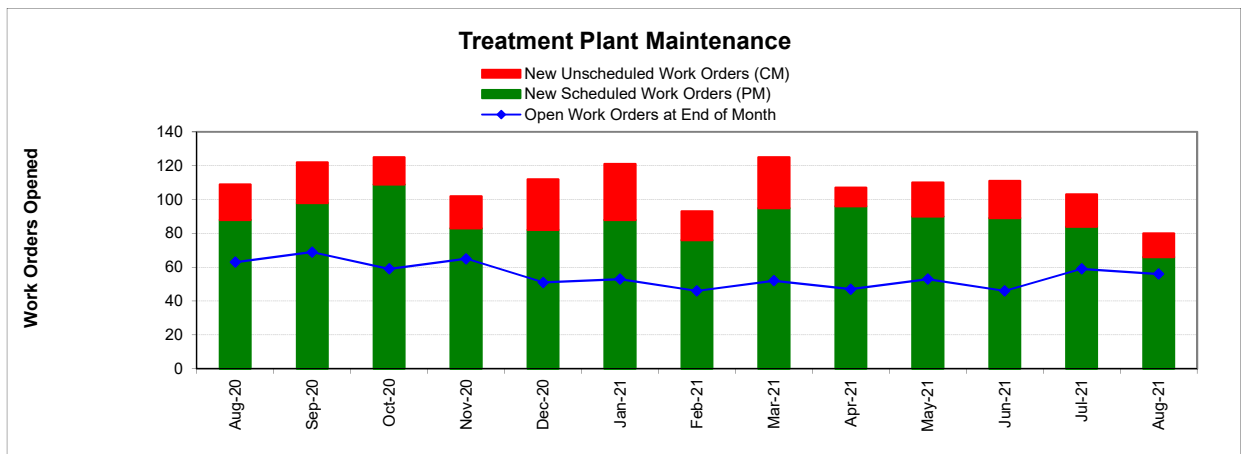
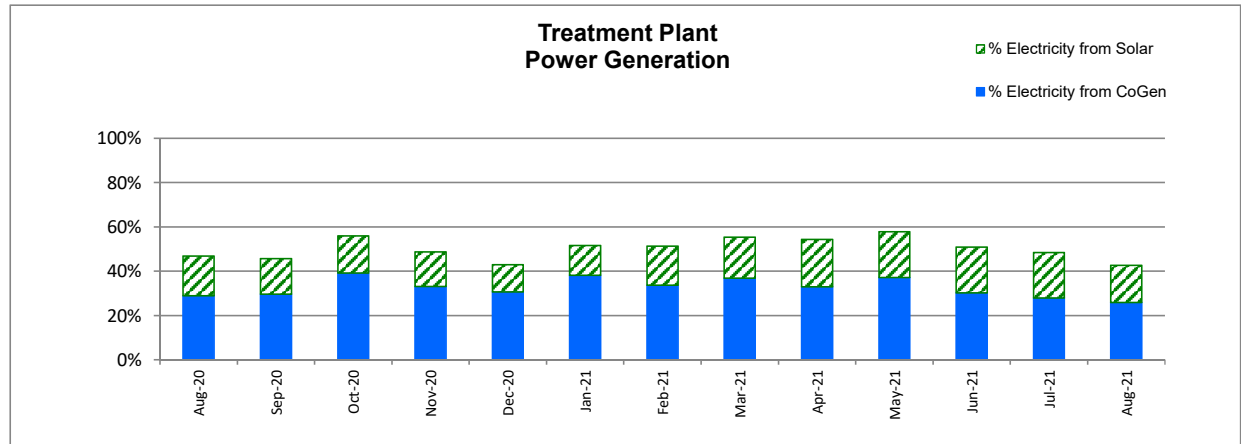
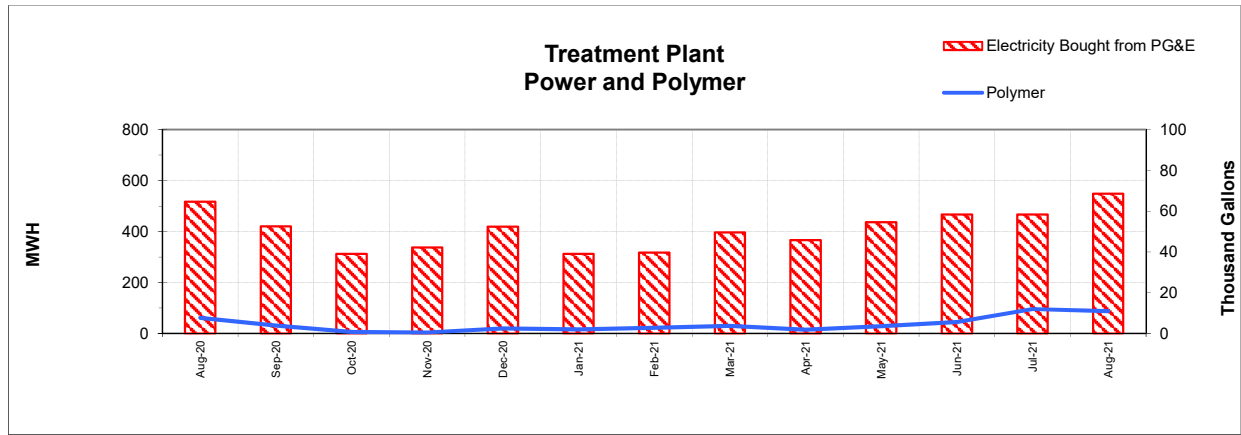
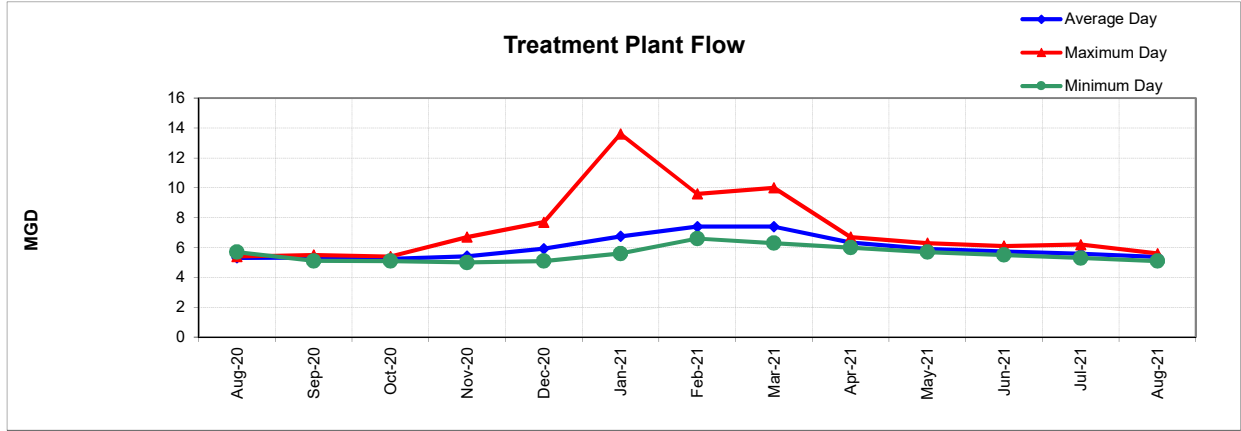
- Staff continued to conduct outreach regarding the Browns Valley Trunk Project. Weekly email and text updates as well as weekly website updates were made to keep residents up to date regarding construction activities. Staff continued to conduct outreach for the Summer 2021 Collection System Rehabilitation Project.
- Staff had a booth at the Farmers Market on August 14. The focus for the event was proper grease disposal and staff gave many residents grease scrapers and grease buddy containers.
- Staff continued participation in local and regional group meetings such as the Bay Area Pollution Prevention Group, the Environmental Education Coalition of Napa County, COAD, and Baywork.
- NapaSan continues to promote the safe medication disposal program. The total amount of unneeded medications collected since the drug takeback program began in September 2010 is 25,784.2 pounds.
- Staff began designing and writing the articles for the Fall 2021 Pipeline newsletter.

**ENGINEERING / CAPITAL PROJECTS / DEVELOPMENT:**

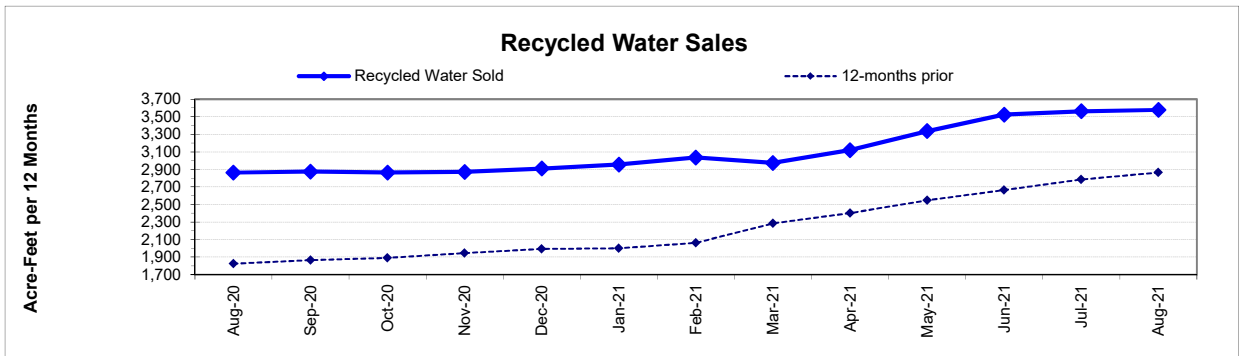
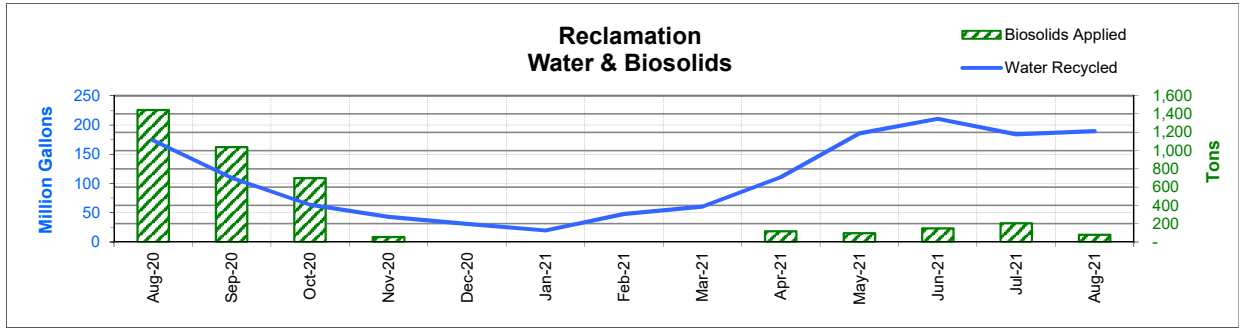
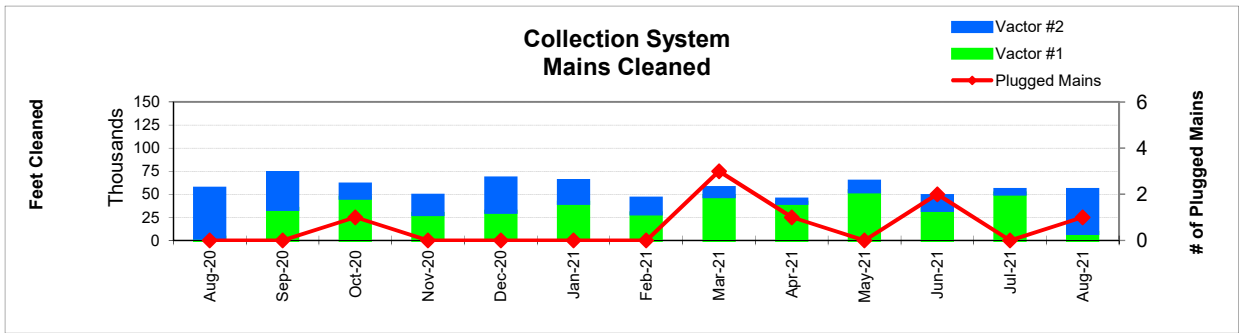
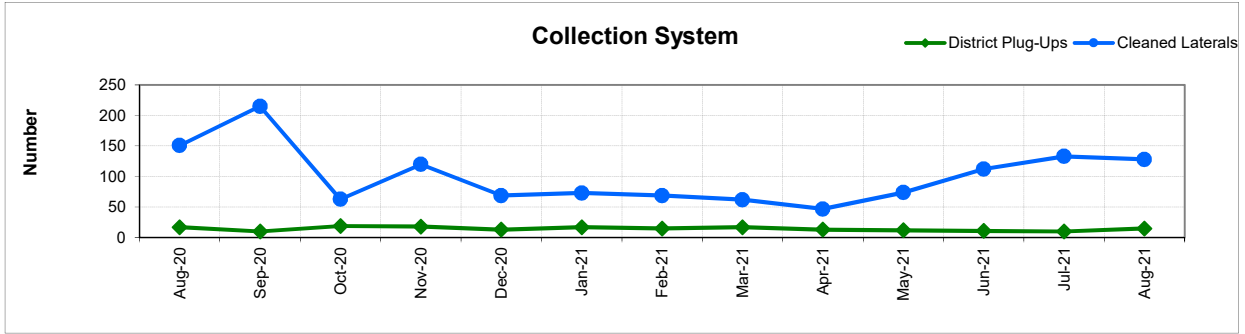
Significant events occurring in the Engineering Division for August 2021 include:

- Consultants and staff continued work on the CMMS implementation.
- Contractor continued construction of the Browns Valley Trunk Project.
- Contractor continued construction of the West Napa Pump Station Project.
- Contractor continued construction of the 2020 Collection System Rehabilitation Project.
- Contractor continued construction of the 2021 Collection System Rehabilitation Project.
- Staff continued design of the 2022 Collection System Rehabilitation Project.
- Contractor continued construction of the 66-inch Trunk Sewer Rehabilitation Project.
- Contractor continued construction of the Pond Levee Maintenance Project.
- Contractor continued construction of the 2021 Treatment Plant Improvements Project.
- Consultant began design for the North Napa Siphon Gate Replacement Project.
- Consultant continued working on the Wastewater Treatment Plant Master Plan.
- Staff reviewed 48 sets of development plans and deemed 19 sets of plans complete. The approved plans consisted of 1 demolition permit, 1 mainline extension, 10 residential dwellings, 1 residential lateral, and 6 tenant improvements.









**FUND BALANCES - MONTHLY**

<b>CATEGORY</b>	<b>Aug-20</b>	<b>Sep-20</b>	<b>Oct-20</b>	<b>Nov-20</b>	<b>Dec-20</b>	<b>Jan-21</b>	<b>Feb-21</b>
<i>(Thousand Dollars)</i>							
7800	1,143	924	231	3,270	14,872	13,536	13,713
7850	-	-	-	-	-	-	-
<b>Subtotal Operating</b>	<b>1,143</b>	<b>924</b>	<b>231</b>	<b>3,270</b>	<b>14,872</b>	<b>13,536</b>	<b>13,713</b>
Capital Improvement Projects	21,179	16,674	15,526	10,816	6,622	3,967	2,599
Debt Proceeds	-	-	-	-	-	-	-
<b>Subtotal Capital</b>	<b>21,179</b>	<b>16,674</b>	<b>15,526</b>	<b>10,816</b>	<b>6,622</b>	<b>3,967</b>	<b>2,599</b>
<b>Total Discretionary Funds</b>	<b>22,322</b>	<b>17,598</b>	<b>15,757</b>	<b>14,086</b>	<b>21,494</b>	<b>17,503</b>	<b>16,312</b>
Expansion Fund (Restricted)	-	-	-	-	-	-	-
<b>Total Restricted Funds</b>	<b>-</b>	<b>-</b>	<b>-</b>	<b>-</b>	<b>-</b>	<b>-</b>	<b>-</b>
<b>TOTAL ALL FUNDS</b>	<b>22,322</b>	<b>17,598</b>	<b>15,757</b>	<b>14,086</b>	<b>21,494</b>	<b>17,503</b>	<b>16,312</b>

**DEVELOPMENT WORKLOAD - MONTHLY**

<b>CATEGORY</b>	<b>Aug-20</b>	<b>Sep-20</b>	<b>Oct-20</b>	<b>Nov-20</b>	<b>Dec-20</b>	<b>Jan-21</b>	<b>Feb-21</b>	<b>Mar-21</b>	<b>Apr-21</b>	<b>May-21</b>	<b>Jun-21</b>	<b>Jul-21</b>	<b>Aug-21</b>
<b><u>Phone Requests</u></b>													
Maps/Drawings	4	2	2	2	1	1	1	3	4	4	1	2	0
Lateral Permits	-	-	-	-	-	-	-	0	-	-	-	-	1
Policy Questions	1	3	1	1	0	2	2	1	-	-	2	1	2
Development Questions	48	45	30	38	42	26	36	37	64	65	75	81	68
Miscellaneous	13	14	11	8	6	4	8	3	10	13	14	5	3
<b>TOTAL</b>	<b>66</b>	<b>64</b>	<b>44</b>	<b>49</b>	<b>49</b>	<b>33</b>	<b>47</b>	<b>44</b>	<b>78</b>	<b>82</b>	<b>92</b>	<b>89</b>	<b>74</b>
<b><u>Counter Requests</u></b>													
Maps/Drawings	-	-	-	-	-	-	-	-	-	-	-	1	-
Lateral Permits	8	7	13	13	7	10	6	10	5	6	7	6	8
Policy Questions	-	-	-	-	-	-	-	-	-	-	-	-	-
Development Questions	-	-	-	3	-	-	-	-	2	1	1	-	-
Miscellaneous	-	-	-	-	-	-	-	-	-	-	-	-	-
<b>TOTAL</b>	<b>8</b>	<b>7</b>	<b>13</b>	<b>16</b>	<b>7</b>	<b>10</b>	<b>6</b>	<b>10</b>	<b>7</b>	<b>7</b>	<b>8</b>	<b>7</b>	<b>8</b>
<b><u>Initial Request (Referrals)</u></b>	<b>17</b>	<b>10</b>	<b>8</b>	<b>15</b>	<b>9</b>	<b>14</b>	<b>9</b>	<b>13</b>	<b>13</b>	<b>26</b>	<b>18</b>	<b>19</b>	<b>13</b>
<b><u>Connection Permits Issued</u></b>													
Residential Permits	6	10	2	6	11	4	5	1	7	8	10	9	13
Commercial Permits	1	1	1	5	6	1	3	4	7	3	5	5	6
Industrial Permits	-	-	-	-	-	-	-	-	-	-	-	-	-
<b>TOTAL PERMITS</b>	<b>7</b>	<b>11</b>	<b>3</b>	<b>11</b>	<b>17</b>	<b>5</b>	<b>8</b>	<b>5</b>	<b>14</b>	<b>11</b>	<b>15</b>	<b>14</b>	<b>19</b>
Residential Units	5	10	13	13	15	38	3	1	8	3	7	25	11
Commercial Units	1	1	1	-	4	3	2	2	2	2	1	9	-
<b>TOTAL UNITS</b>	<b>6</b>	<b>11</b>	<b>14</b>	<b>13</b>	<b>19</b>	<b>41</b>	<b>5</b>	<b>3</b>	<b>10</b>	<b>5</b>	<b>8</b>	<b>34</b>	<b>11</b>
<b><u>Annexations</u></b>													
Submitted	-	-	-	1	-	1	1	-	1	2	-	-	-
Acreage	-	-	-	36.06	-	8.50	293	-	24.00	4.6	-	-	-
<b><u>Plans Reviewed</u></b>													
<b><u>Subdivisions/Sites</u></b>													
First Submittal	9	8	5	8	8	1	6	5	13	8	11	10	18
Second Submittal	4	10	1	8	9	1	1	1	6	6	7	7	9
Third Submittal	6	8	7	5	8	4	3	1	2	6	5	7	5
<b><u>Building/Tenant Improvements</u></b>													
First Submittal	9	2	4	7	6	6	1	5	10	4	5	4	9
Second Submittal	5	4	3	1	4	2	6	1	5	1	3	3	4
Third Submittal	5	3	3	4	-	-	6	2	2	2	3	6	3
<b><u>Miscellaneous Plan Reviews</u></b>													
Miscellaneous Plan Reviews	-	-	-	-	-	-	-	-	-	-	-	-	-
<b>TOTAL PLANS REVIEWED</b>	<b>38</b>	<b>35</b>	<b>23</b>	<b>33</b>	<b>35</b>	<b>14</b>	<b>23</b>	<b>15</b>	<b>38</b>	<b>27</b>	<b>34</b>	<b>37</b>	<b>48</b>

**INSPECTION WORKLOAD - MONTHLY**

<b>CATEGORY</b>	<b>Aug-20</b>	<b>Sep-20</b>	<b>Oct-20</b>	<b>Nov-20</b>	<b>Dec-20</b>	<b>Jan-21</b>	<b>Feb-21</b>	<b>Mar-21</b>	<b>Apr-21</b>	<b>May-21</b>	<b>Jun-21</b>	<b>Jul-21</b>	<b>Aug-21</b>
<b><u>CONSTRUCTION</u></b>													
Locating Sewers	-	-	-	-	-	-	-	-	-	-	-	-	2
Permit Processing	-	-	-	-	-	-	-	-	-	-	-	-	-
Preconstruction Meetings	2	2	-	-	-	-	-	1	2	1	3	-	-
Inspections - Mains	-	-	7	3	3	2	-	-	-	21	10	5	1
Inspections - Manholes	6	6	5	6	3	4	-	-	11	8	3	5	9
Inspections - Laterals	12	8	12	8	9	7	5	12	35	31	18	9	18
Inspections - Cleanouts	5	11	9	13	10	10	7	9	21	10	1	1	6
Inspections - Review Video	3	2	4	-	-	-	3	-	-	-	3	-	2
Demo - Septic Tanks	-	-	-	-	-	-	-	-	-	1	-	-	-
Demo - Buildings	1	-	-	-	1	-	-	-	-	-	-	-	-
Update Record Drawings	-	-	-	-	-	-	-	-	-	-	-	-	-
<b>TOTAL</b>	<b>29</b>	<b>29</b>	<b>37</b>	<b>30</b>	<b>26</b>	<b>23</b>	<b>15</b>	<b>22</b>	<b>69</b>	<b>72</b>	<b>38</b>	<b>20</b>	<b>38</b>
<b><u>MISCELLANEOUS</u></b>													
Meter Readings	-	-	-	-	-	4	-	4	-	-	-	-	-
Washdown Facility Inspections	-	-	-	-	-	-	-	-	-	-	1	-	-
General Customer Assistance	46	35	27	35	34	33	12	-	-	2	-	38	38
City of Napa Water Discharge	-	-	-	-	-	-	-	-	-	-	-	-	-
<b>TOTAL</b>	<b>46</b>	<b>35</b>	<b>27</b>	<b>35</b>	<b>34</b>	<b>37</b>	<b>12</b>	<b>4</b>	<b>-</b>	<b>2</b>	<b>1</b>	<b>38</b>	<b>38</b>
<b><u>SPECIAL PROJECTS</u></b>	<b>21</b>	<b>21</b>	<b>22</b>	<b>21</b>	<b>20</b>	<b>20</b>	<b>14</b>	<b>50</b>	<b>37</b>	<b>22</b>	<b>24</b>	<b>12</b>	<b>21</b>



**RECYCLED WATER DELIVERIES - MONTHLY**

	Acres	Aug-20	Sep-20	Oct-20	Nov-20	Dec-20	Jan-21	Feb-21	Mar-21	Apr-21	May-21	Jun-21	Jul-21	Aug-21
<b>MONTHLY (MG)</b>														
<b>Water Sold</b>														
Golf Courses	638.0	62.144	45.656	25.052	21.811	8.095	1.109	4.210	17.697	42.657	72.839	67.733	73.695	65.483
Cemeteries	57.1	5.091	4.257	4.064	2.374	1.421	0.489	0.548	0.864	4.079	4.307	4.895	5.192	5.328
Parks	18.5	1.142	0.691	0.638	0.274	0.046	-	0.007	-	0.682	1.486	1.230	0.760	0.897
Schools	12.6	2.583	1.995	1.372	0.827	0.071	0.006	-	0.097	1.544	2.390	2.428	1.969	2.301
Commerical	166.5	18.844	14.144	13.084	8.985	3.651	1.948	1.108	4.228	10.589	16.724	17.867	16.880	17.320
Vineyards	3,442.0	68.013	36.009	16.738	7.086	15.696	16.117	41.694	36.227	41.332	63.950	85.981	64.890	68.576
Trucked Water	175.0	3.988	2.748	2.104	1.251	1.681	0.134	0.238	1.460	3.543	4.223	8.283	6.619	7.321
<b>Subtotal Sales</b>	<b>4,509.6</b>	<b>161.805</b>	<b>105.500</b>	<b>63.053</b>	<b>42.607</b>	<b>30.663</b>	<b>19.803</b>	<b>47.806</b>	<b>60.575</b>	<b>104.425</b>	<b>165.919</b>	<b>188.417</b>	<b>170.005</b>	<b>167.228</b>
<b>District Use</b>														
Jameson	330.0	1.146	1.271	-	-	-	-	-	-	-	-	-	-	-
Somky	213.0	10.491	2.855	0.547	0.254	0.133	0.001	-	0.013	6.477	19.621	21.914	13.995	22.023
Fagundes/Airport	50.5	-	-	-	-	-	-	-	-	-	-	-	-	-
<b>Subtotal District</b>	<b>593.5</b>	<b>11.638</b>	<b>4.126</b>	<b>0.547</b>	<b>0.254</b>	<b>0.133</b>	<b>0.001</b>	<b>-</b>	<b>0.013</b>	<b>6.477</b>	<b>19.621</b>	<b>21.914</b>	<b>13.995</b>	<b>22.023</b>
<b>TOTAL DELIVERED</b>	<b>5,103.1</b>	<b>173.443</b>	<b>109.626</b>	<b>63.600</b>	<b>42.861</b>	<b>30.796</b>	<b>19.803</b>	<b>47.806</b>	<b>60.588</b>	<b>110.902</b>	<b>185.540</b>	<b>210.331</b>	<b>184.000</b>	<b>189.251</b>
<b>ANNUAL (AF)</b>														
<b>Water Sold</b>														
Golf Courses	638.0	1,288	1,275	1,254	1,271	1,296	1,299	1,274	1,266	1,321	1,384	1,361	1,359	1,369
Cemeteries	57.1	118	117	117	115	118	119	119	112	114	116	115	115	116
Parks	18.5	18	17	17	18	18	18	18	18	20	24	24	21	21
Schools	12.6	47	48	49	49	49	49	48	46	49	50	50	47	46
Commerical	166.5	415	410	408	400	404	407	401	383	387	397	403	393	388
Vineyards	3,442.0	919	945	954	954	955	995	1,106	1,075	1,148	1,285	1,475	1,515	1,517
Trucked Water	175.0	58	62	64	65	69	68	69	72	79	81	97	111	122
<b>Subtotal Sales</b>	<b>4,509.6</b>	<b>2,864</b>	<b>2,874</b>	<b>2,864</b>	<b>2,872</b>	<b>2,909</b>	<b>2,955</b>	<b>3,035</b>	<b>2,973</b>	<b>3,119</b>	<b>3,336</b>	<b>3,524</b>	<b>3,562</b>	<b>3,578</b>
<b>District Use</b>														
Jameson	330.0	8	12	12	12	12	12	12	12	12	12	12	7	4
Somky	213.0	232	178	160	147	147	147	147	147	167	211	237	234	270
Fagundes/Airport	50.5	-	-	-	-	-	-	-	-	-	-	-	-	-
<b>Subtotal District</b>	<b>593.5</b>	<b>240</b>	<b>190</b>	<b>172</b>	<b>159</b>	<b>160</b>	<b>159</b>	<b>159</b>	<b>159</b>	<b>179</b>	<b>222</b>	<b>249</b>	<b>242</b>	<b>273</b>
<b>TOTAL DELIVERED</b>	<b>5,103.1</b>	<b>3,104</b>	<b>3,064</b>	<b>3,036</b>	<b>3,031</b>	<b>3,068</b>	<b>3,115</b>	<b>3,194</b>	<b>3,133</b>	<b>3,298</b>	<b>3,558</b>	<b>3,773</b>	<b>3,803</b>	<b>3,852</b>

**BIOSOLIDS HANDLING - MONTHLY**

<b>Site</b>	<b>Aug-20</b>	<b>Sep-20</b>	<b>Oct-20</b>	<b>Nov-20</b>	<b>Dec-20</b>	<b>Jan-21</b>	<b>Feb-21</b>	<b>Mar-21</b>	<b>Apr-21</b>	<b>May-21</b>	<b>Jun-21</b>	<b>Jul-21</b>	<b>Aug-21</b>
<u>Land Applied by NSD</u>													
Somky									119				
Fagundes			22	53									
Jameson Canyon	165	201	85							96	148	205	80
<b>Subtotal by NSD</b>	<b>165</b>	<b>201</b>	<b>107</b>	<b>53</b>	<b>-</b>	<b>-</b>	<b>-</b>	<b>-</b>	<b>119</b>	<b>96</b>	<b>148</b>	<b>205</b>	<b>80</b>
<u>Land Applied by Contractor</u>													
Somky	1,277	838	590										
Fagundes													
Jameson Canyon													
<b>Subtotal by Contractor</b>	<b>1,277</b>	<b>838</b>	<b>590</b>	<b>-</b>	<b>-</b>	<b>-</b>	<b>-</b>	<b>-</b>	<b>-</b>	<b>-</b>	<b>-</b>	<b>-</b>	<b>-</b>
<b>Total Land Applied</b>	<b>1,442</b>	<b>1,039</b>	<b>697</b>	<b>53</b>	<b>-</b>	<b>-</b>	<b>-</b>	<b>-</b>	<b>119</b>	<b>96</b>	<b>148</b>	<b>205</b>	<b>80</b>
<b>Off Site (Contractor)</b>													
<b>Total (tons)</b>	<b>1,442</b>	<b>1,039</b>	<b>697</b>	<b>53</b>	<b>-</b>	<b>-</b>	<b>-</b>	<b>-</b>	<b>119</b>	<b>96</b>	<b>148</b>	<b>205</b>	<b>80</b>

**COLLECTION SYSTEM MAINTENANCE - MONTHLY**

<b>CATEGORY</b>	<b>Aug-20</b>	<b>Sep-20</b>	<b>Oct-20</b>	<b>Nov-20</b>	<b>Dec-20</b>	<b>Jan-21</b>	<b>Feb-21</b>	<b>Mar-21</b>	<b>Apr-21</b>	<b>May-21</b>	<b>Jun-21</b>	<b>Jul-21</b>	<b>Aug-21</b>
<b>Plugups</b>													
<b>Total Calls</b>	47	29	62	56	59	48	41	54	59	40	33	38	40
Business Hours	28	19	43	37	39	37	29	39	37	26	25	24	23
After Hours	19	10	19	19	20	11	12	15	22	14	8	14	17
District's	17	10	19	18	13	17	15	17	13	12	11	10	15
Property Owner's	30	19	42	38	46	31	26	34	45	28	20	28	25
Plugged Main Lines	-	-	1	-	-	-	-	3	1	-	2	-	1
Run Lateral w/Eel	151	215	63	120	69	73	69	62	47	74	112	133	128
<b>Cleaning (feet of sewer)</b>													
Vactor #1	2,936	34,338	46,255	28,507	31,186	40,675	29,419	48,016	40,653	53,152	33,236	50,928	8,225
Vactor #2	53,184	38,654	14,202	19,789	35,938	23,525	15,887	8,590	3,679	10,568	14,921	3,579	46,483
Hydro	-	-	-	-	1,968	-	-	166	-	-	-	-	-
Rodder	694	-	-	-	-	1,433	-	-	-	-	-	-	-
<b>Total (feet)</b>	<b>56,814</b>	<b>72,992</b>	<b>60,457</b>	<b>48,296</b>	<b>69,092</b>	<b>65,633</b>	<b>45,306</b>	<b>56,772</b>	<b>44,331</b>	<b>63,720</b>	<b>48,156</b>	<b>54,507</b>	<b>54,708</b>
<b>Cleaning Days</b>													
Vactor #1	3	10	16	12	12	16	13	19	17	16	16	16	4
Vactor #2	17	11	6	8	10	8	6	3	2	3	5	3	18
Hydro	-	-	-	-	1	-	-	1	-	-	-	-	-
Rodder	1	-	-	-	-	3	-	-	-	-	-	-	-
<b>Feet/day</b>	<b>2,700</b>	<b>3,500</b>	<b>2,750</b>	<b>2,400</b>	<b>3,000</b>	<b>2,450</b>	<b>2,400</b>	<b>2,450</b>	<b>2,350</b>	<b>3,350</b>	<b>2,300</b>	<b>2,850</b>	<b>2,500</b>
Vactor #1	1,000	3,450	2,900	2,400	2,600	2,550	2,250	2,550	2,400	3,300	2,100	3,200	2,050
Vactor #2	3,150	3,500	2,350	2,450	3,600	2,950	2,650	2,850	1,850	3,500	3,000	1,200	2,600
Hydro	-	-	-	-	1,950	-	-	150	-	-	-	-	-
Rodder	700	-	-	-	-	500	-	-	-	-	-	-	-
<b>Video Inspections</b>													
Mains (feet)	22,515	19,796	26,009	28,717	18,657	28,757	22,463	36,064	26,380	12,761	26,640	26,847	31,995
Laterals (each)	210	259	184	204	227	219	233	228	237	290	244	231	234
<b>Construction (each)</b>													
Cleanouts	15	21	8	12	7	11	7	8	13	5	3	3	4
Laterals	25	23	20	9	6	6	6	7	6	3	3	3	6
Mains	-	1	4	3	1	-	1	-	-	1	-	1	-
Manholes	-	-	3	-	-	-	1	1	-	-	-	-	1
Other	-	5	25	-	-	-	-	-	-	-	-	-	-
<b>USA Markings</b>													
Regular (w/in 2 days)	297	281	278	246	185	204	252	741	1,019	278	287	366	784
Emergency (w/in 2 hours)	18	12	13	13	15	10	13	19	22	17	14	7	13





**WASTEWATER PLANT MAINTENANCE and LABORATORY DATA - MONTHLY**

<b>CATEGORY</b>	<b>Aug-20</b>	<b>Sep-20</b>	<b>Oct-20</b>	<b>Nov-20</b>	<b>Dec-20</b>	<b>Jan-21</b>	<b>Feb-21</b>	<b>Mar-21</b>	<b>Apr-21</b>	<b>May-21</b>	<b>Jun-21</b>	<b>Jul-21</b>	<b>Aug-21</b>
<b><u>Scheduled</u></b>													
Old	26	40	39	24	31	20	25	26	26	26	31	22	35
New	88	98	109	83	82	88	76	95	96	90	89	84	66
Completed	74	99	124	76	93	83	75	95	96	85	98	71	67
<b>New Balance</b>	<b>40</b>	<b>39</b>	<b>24</b>	<b>31</b>	<b>20</b>	<b>25</b>	<b>26</b>	<b>26</b>	<b>26</b>	<b>31</b>	<b>22</b>	<b>35</b>	<b>34</b>
<b><u>Unscheduled</u></b>													
Old	21	23	30	35	34	31	28	20	26	21	22	24	24
New	21	24	16	19	30	33	17	30	11	20	22	19	14
Completed	19	17	11	20	33	36	25	24	16	19	20	19	16
<b>New Balance</b>	<b>23</b>	<b>30</b>	<b>35</b>	<b>34</b>	<b>31</b>	<b>28</b>	<b>20</b>	<b>26</b>	<b>21</b>	<b>22</b>	<b>24</b>	<b>24</b>	<b>22</b>
<b><u>Total Work Orders</u></b>													
Old	47	63	69	59	65	51	53	46	52	47	53	103	59
New	109	122	125	102	112	121	93	125	107	110	111	90	80
Completed	93	116	133	96	126	119	100	119	112	104	118	59	83
<b>New Balance</b>	<b>63</b>	<b>69</b>	<b>59</b>	<b>65</b>	<b>51</b>	<b>53</b>	<b>46</b>	<b>52</b>	<b>47</b>	<b>53</b>	<b>46</b>	<b>59</b>	<b>56</b>
<b><u>LAB ANALYSES</u></b>													
<b>Sample Type</b>													
Regulatory	189	141	191	221	328	209	204	219	242	142	159	140	165
Process Control	772	700	906	960	1,644	986	918	968	1,010	783	871	829	826
Special Request	51	31	10	301	42	9	-	-	-	-	10	-	-
Quality Control/Assurance	674	577	727	928	1,662	929	878	962	968	674	506	520	551
<b>TOTAL</b>	<b>1,686</b>	<b>1,449</b>	<b>1,834</b>	<b>2,410</b>	<b>3,676</b>	<b>2,133</b>	<b>2,000</b>	<b>2,149</b>	<b>2,220</b>	<b>1,599</b>	<b>1,546</b>	<b>1,489</b>	<b>1,542</b>