



**Napa Sanitation District**

**General Manager's Report**

**for**

**April 2020**

**Contents:**

- a. Transmittal Memo
- b. Budget Status and Cash Summary
- c. Key Information Graphs – Fund Balances, Treatment Plant and Collection
- d. Fund Balances
- e. Development Processing
- f. Construction Inspection
- g. Pollution Prevention
- h. Recycled Water Deliveries
- i. Biosolids Handling
- j. Collection System Maintenance
- k. Treatment Plant Operations
- l. Treatment Plant Maintenance & Laboratory
- m. Capital Project Expenditure Summary



## NAPA SANITATION DISTRICT

## General Manager's Report

**DATE:** June 3, 2020

**FROM:** Timothy B. Healy, General Manager

**SUBJECT:** General Manager's Report for April 2020

### **REGULATORY COMPLIANCE:**

Collection System Compliance:	0 Category 1 SSO's, 0 Category 2 SSO's, and 1 Category 3 SSO's
NPDES Permit (WWTP) Compliance:	Full compliance with all regulations
Air Quality Compliance:	Full compliance with all regulations
Recycled Water Compliance:	Full compliance with all regulations
Biosolids Compliance:	Full compliance with all regulations
Significant Comments:	None

### **FISCAL STATUS:**

Period Covered:	July 1, 2019 – April 30, 2020
Percent Fiscal Year:	83.3%
Operating Expenditures to date:	57.8%
Historical Expenditures to date:	80.6%
Significant Comments:	Sewer service charges were received from the second installment payments of the property taxes in April.

In prior years, typically an intrafund transfer from Operating to Capital is done for cash flow purposes. As a result of some yearend accounting adjustments last fiscal year, the Capital Fund has had sufficient funds for this fiscal year, and a intrafund transfer had not been needed. This causes a lower than average Operating Expenditures to date in comparison to the Historical Expenditures to date.

### **PERSONNEL:**

Significant events for the month of April 2020 in the Human Resources Department:

New Hires:	None
Separations:	None
Promotions:	None
Recruitment Activities:	None
Injuries:	None

### **COLLECTIONS:**

Significant events for the month of April 2020 in Collection System Maintenance include:

- The District had 0 Category 1 Sanitary Sewer Overflows (SSO's), 0 Category 2 SSO's and 1 Category 3 SSO's during the month. (A Category 1 is defined as an SSO that reached a drainage channel and/or surface water or; an SSO that reached a storm drainpipe that was not fully recovered and returned to the sanitary sewer system. A Category 2 is defined as an SSO that is equal to or greater than 1,000 gallons that did not reach a surface water. A Category 3 is defined as an SSO that is less than 1,000 gallons that did not reach a surface water. These are usually minor overflows of less than 10 gallons from cleanouts on District laterals that can be cleaned up by the crews.)
- The repair crew installed 1 cleanout and repaired 0. They also repaired 0 laterals and lined 0 laterals. Additionally, the service response/programs crew completed 150 work orders in support of the grease and odor control program, responded to 31 customer requests for service (5 were NSD problem) and closed out 294 mark and locate request tickets.
- The preventative maintenance crews ran work orders on 17 laterals, cleaned approximately 84,099.6 feet of main line and CCTV inspected 27 laterals. In addition, the CCTV truck televised 6,797.6 feet of mainline.

### **TREATMENT PLANT:**

Significant events for the month of April 2020 in the Treatment Plant Department: None.

### **Plant Operations:**

- For April 2020, the plant's influent flow was 214.3 MG as compared to last year flow for April 2019 of 261.4 MG
- There was 0.78" rainfall for April 2020 (Carneros Rainfall Center) as compared to .32" rainfall for April 2019.
- Pond 4 end of the month recorded level reading was 32.29".

### **Power Consumption and Production:**

- April power purchased from PG&E was 361 MWH in comparison to April 2019 purchase of 423 MWH.
- Cogeneration unit ran 704 of 720 hours for the month – 97.78% uptime, averaging 307.11 Kw, producing 216 MWH of energy.
- Solar generation in April was 162 MWH, compared to 142 MWH in March and 173 MWH in April 2019.

Maintenance:

Significant events for the month of April 2020:

Process Maintenance

- Cogeneration unit monthly emission test - in compliance with BAAQMD permit
- Replaced XPS-10 level Transducer for Ferric Tank
- Fire control panel Digester Complex/replaced batteries
- Replaced Digester Elevator fan motor

Projects

- Installed dewatering pump and electrical control box/Pond 1

Standby Power

- Plant generators operational testing only
- Riverpark, Stonecrest, West Napa operational testing only

Influent Pumps

- All pumps operational

Laboratory:

**Effluent (EFF-001) Summary**

There were no violations of Effluent limits during the month of April 2020. All parameters were monitored at the required frequencies. The following were notable sampling events:

- April 1, 2020: Mercury, Metals, Cyanide, Nutrients
- April 1-5, 2020: Acute Toxicity Bioassay
- April 7, 2020: Nutrients

**Influent (INF-001) Summary**

Monthly Influent monitoring of all parameters occurred at the required frequencies. The following were notable sampling events:

- April 1, 2020: Metals, Mercury, Cyanide, Nutrients

**RECYCLING:**

Significant events in the Recycling Department for April 2020 include:

- Recycled water delivered for the month of April 2020 was (57.028 million gallons), as compared to April 2019 (19.654 million gallons) is higher from the previous year due to vineyard irrigation, golf course and truck hauling. Delivered recycled water volume represents the sum of all use site flow meter consumption values.
- Staff continued with the land application of biosolids at the Jameson Reuse site.

**POLLUTION PREVENTION:**

Significant events in the Pollution Prevention and Outreach Division for April 2020 include:

- There were no presentations or tours given in the month of April due to the COVID-19 pandemic.
- No medication was collected in April. The total amount of unneeded medications collected since the drug takeback program began in September 2010 is 22,118.2 pounds. Staff continues to work to find a new home for the drug takeback bin that was located at Family Drug.
- Staff helped to put together the Virtual Earth Day event that took place April 15<sup>th</sup> to April 30<sup>th</sup>. NapaSan was a sponsor of the event and contributed two activities via an Earth Day webpage added to NapaSan's website. Almost 1,000 community members participated in the 50+ virtual Earth Day activities offered by many different agencies and organizations. The event was a very successful fundraiser for the Environmental Education Coalition of Napa County's education programs.
- Outreach was conducted to residents in the Pear Tree Lane area regarding the Summer 2020 Collection System Rehabilitation Project. Letters were sent notifying residents of upcoming CIPP work and email/text notifications were sent to all residents on the project mailing list.
- Staff also conducted outreach regarding the Browns Valley Trunk Sewer Project. Staff met with the Napa Bicycle Coalition to discuss mitigation of project impacts to people utilizing alternative transportation. Meetings were also set with NVTa, NRWS, and Juvenile Hall staff to provide project information and anticipate and mitigate project impacts.

**ENGINEERING / CAPITAL PROJECTS / DEVELOPMENT:**

Significant events occurring in the Engineering Division for April 2020 include:

- Consultant continued work on the SCADA Master Plan.
- Consultants and staff continued work on the CMMS implementation.
- Contractor began pre-construction activities for the Pond Biosolids Removal and Reuse Project.

- Contractor started mobilizing for the Browns Valley Trunk Project.
- Contractor started mobilizing for the West Napa Pump Station Project.
- Contractor continued construction of the Headworks Equipment Replacement Project.
- Contractor completed construction of the 2019 Treatment Plant Improvements Project.
- Contractor continued construction of the Southeast Napa Sewer and Roadway Rehabilitation Project.
- Contractor continued construction of the 2020 Collection System Rehabilitation Project.
- Staff began design of the 2021 Collection System Rehabilitation Project.
- Consultant continued design of the 66-inch Trunk Sewer Rehabilitation Project.
- Contractor continued construction of the 2019 Manhole Rehabilitation Project.
- Contractor continued construction of the Primary Clarifier and DAF Clarifier Rehabilitation Project.
- Consultant continued work on the SWRF Buried Metallic Piping Condition Assessment Project.
- Consultant continued work on the SWRF 12kV Condition Assessment Project.
- Consultant continued working on the Collection System Master Plan.
- Consultant continued working on the Kirkland Recycled Water Pipeline Condition Assessment Project.
- Staff received proposals from consultants for the Wastewater Treatment Plant Master Plan.
- Staff reviewed 29 sets of development plans and deemed 11 sets of plans complete. The approved plans consisted of 7 residential dwellings, 1 residential lateral, and 3 tenant improvements.

**Budget Status & Cash Summary - July 1, 2019 - April 30, 2020 (83.3% of the year)**

<i>Expenditures</i>	<b>FY 19/20 Budget</b>	<b>Encumbrances</b>	<b>Expenditures to date</b>	<b>Committed to date</b>	<b>Remaining Balance</b>	<b>Percent Committed</b>
<b>Operating</b>						
Salaries & Benefits	\$10,258,600	\$0	\$7,665,681	\$7,665,681	\$2,592,919	74.7%
Services & Supplies	6,281,650	911,429	4,191,938	5,103,368	1,178,282	81.2%
Taxes	41,800	-	30,541	30,541	11,259	73.1%
Debt Service	4,593,900	-	4,592,368	4,592,368	1,532 (1)	100.0%
Intrafund Transfers	8,900,000	-	-	-	8,900,000	0.0%
<b>Total Operating:</b>	<b>\$30,075,950</b>	<b>\$911,429</b>	<b>\$16,480,528</b>	<b>\$17,391,958</b>	<b>\$12,683,992 (2)</b>	<b>57.8%</b>
<b>Capital</b>						
Bldgs/Improvements & Equip	\$39,047,000	\$13,034,749	\$9,069,645	\$22,104,394	\$16,942,606 (3)	56.6%
Intrafund Transfers	5,178,000	-	3,959,293	3,959,293	1,218,707	76.5%
<b>Total Capital :</b>	<b>\$44,225,000</b>	<b>\$13,034,749</b>	<b>\$13,028,938</b>	<b>\$26,063,687</b>	<b>\$18,161,313</b>	<b>58.9%</b>
<b>Grand Total Expenditures:</b>	<b>\$74,300,950</b>	<b>\$13,946,178</b>	<b>\$29,509,467</b>	<b>\$43,455,645</b>	<b>\$30,845,305</b>	<b>58.5%</b>
<i>Revenues</i>	<b>FY 19/20 Budget</b>	<b>Encumbrances</b>	<b>Revenues to date</b>	<b>Revenues posted to date</b>	<b>Unposted Revenue</b>	<b>Percent Posted</b>
<b>Operating</b>						
Use of Money/Property	\$578,000		\$1,124,451	\$1,124,451	(\$546,451) (4)	194.5%
Charges for Services	31,213,500		29,934,547	29,934,547	1,278,953	95.9%
Miscellaneous Revenues	60,000		49,710	49,710	10,290	82.8%
Donations/Contributions (Capital Labor)	-		640,435	640,435	(640,435) (5)	N/A
<b>Total Operating:</b>	<b>\$31,851,500</b>		<b>\$31,749,143</b>	<b>\$31,749,143</b>	<b>\$102,357</b>	<b>99.7%</b>
<b>Capital</b>						
Use of Money/Property	\$0		\$3,706	\$3,706	(\$3,706)	N/A
Capacity Charges	5,178,000		3,698,675	3,698,675	1,479,325	71.4%
Bond/Loan Proceeds	15,416,600		-	-	15,416,600 (6)	0.0%
Sale of Assets	25,000		8,736	8,736	16,264	34.9%
Miscellaneous Revenues	5,000		-	-	5,000	0.0%
Intrafund Transfers	14,078,000		3,959,293	3,959,293	10,118,707	28.1%
<b>Total Capital:</b>	<b>\$34,702,600</b>		<b>\$7,956,989</b>	<b>\$7,956,989</b>	<b>\$26,745,611</b>	<b>22.9%</b>
<b>Grand Total Revenue:</b>	<b>\$66,554,100</b>		<b>\$39,706,132</b>	<b>\$39,706,132</b>	<b>\$26,847,968</b>	<b>59.7%</b>

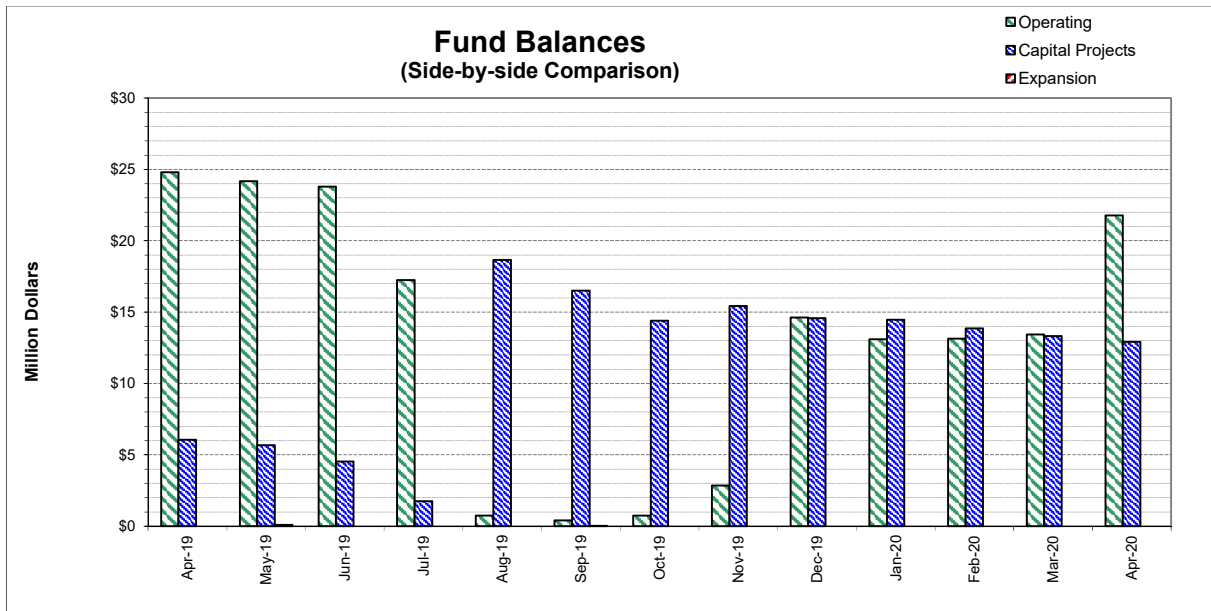
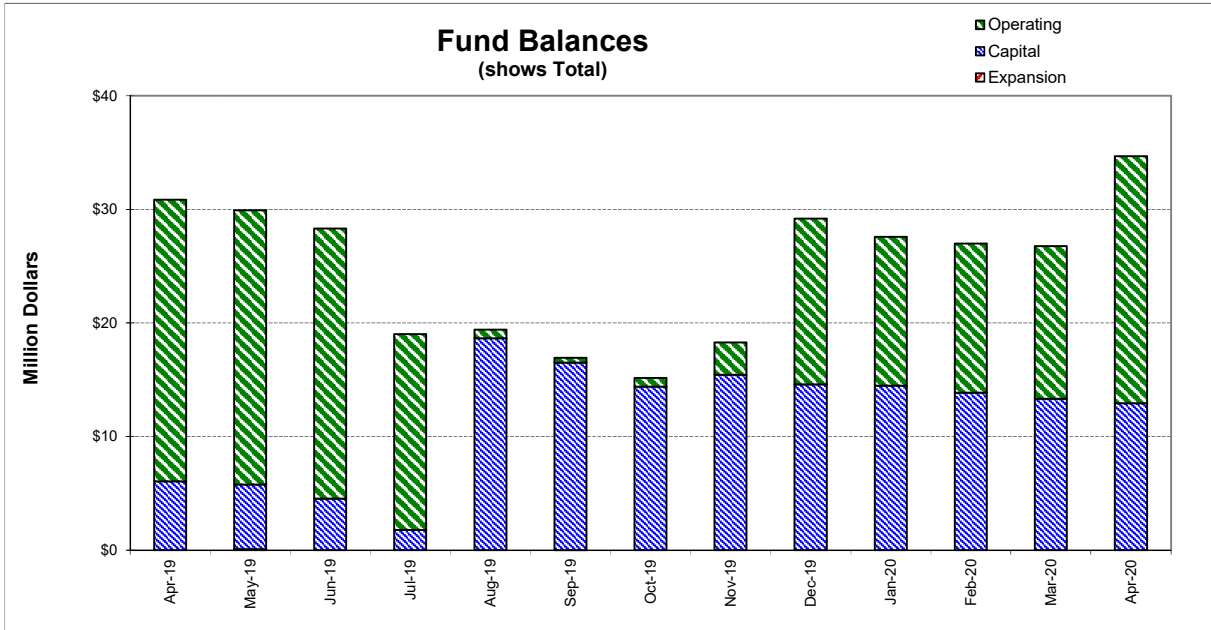
**Cash on Hand as of 4/30/20**

**\$34,690,652**

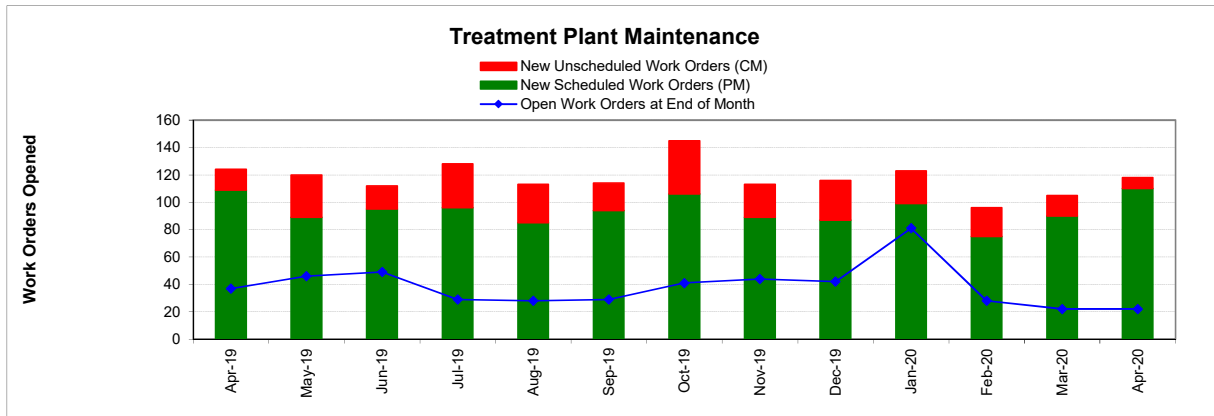
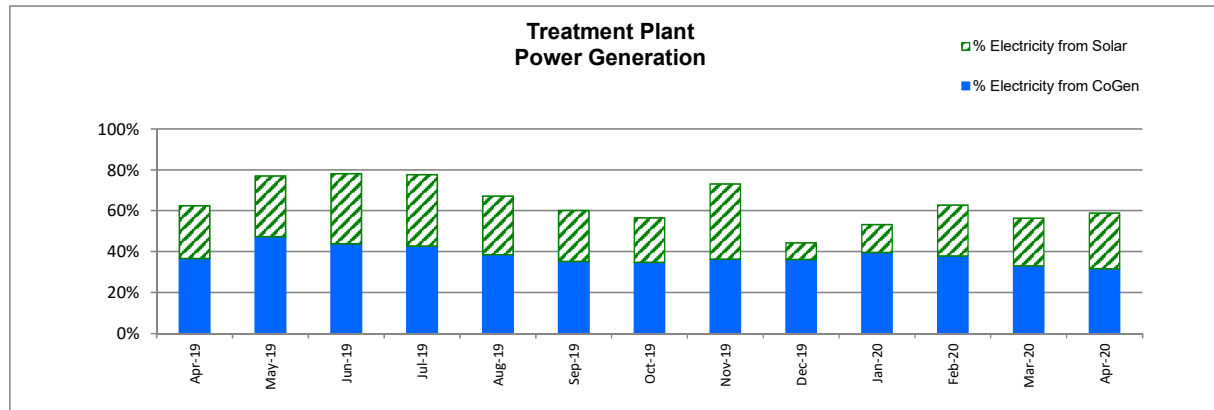
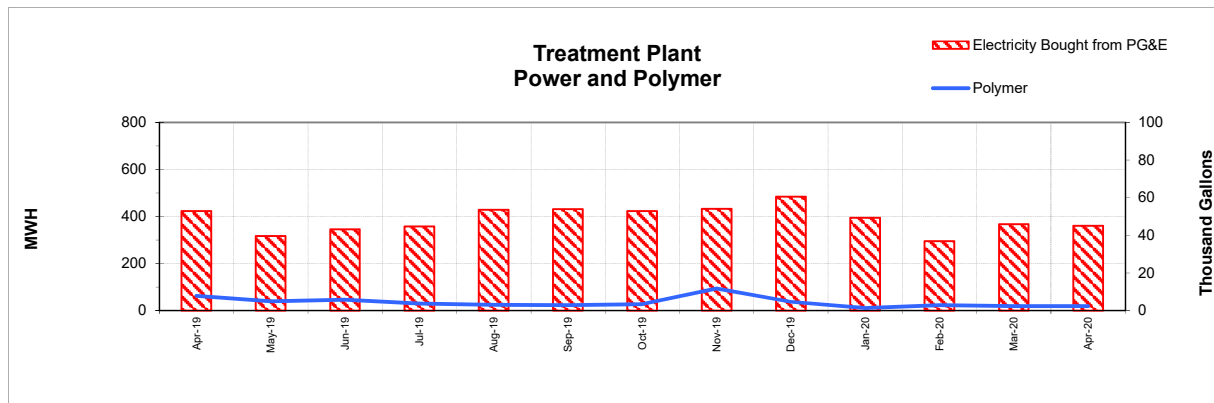
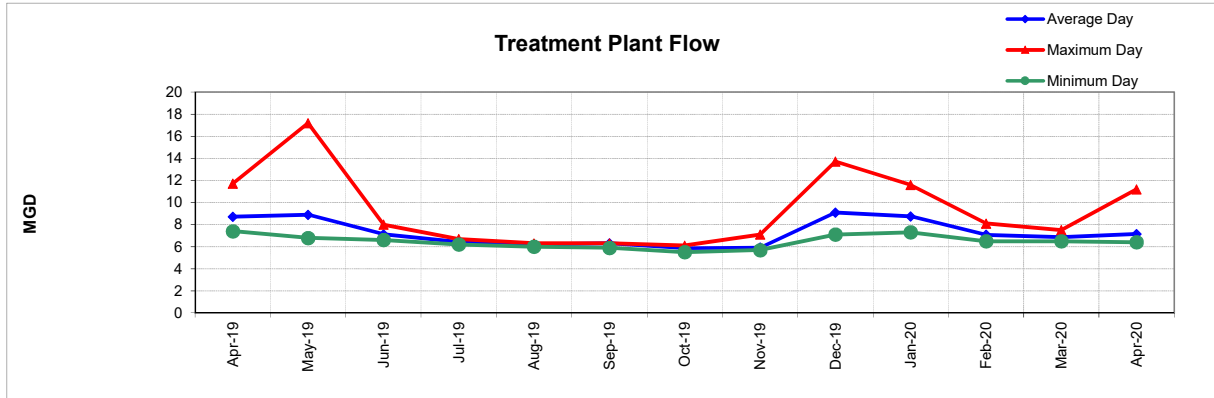
\*\*excluding Debt Service restricted funds

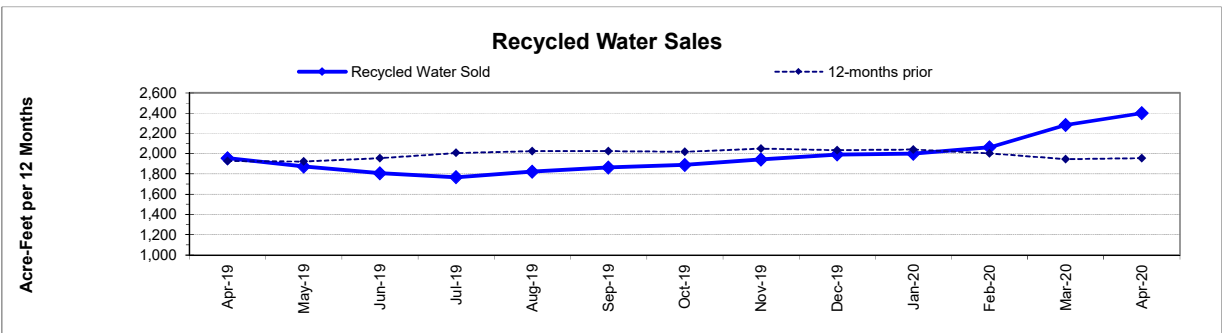
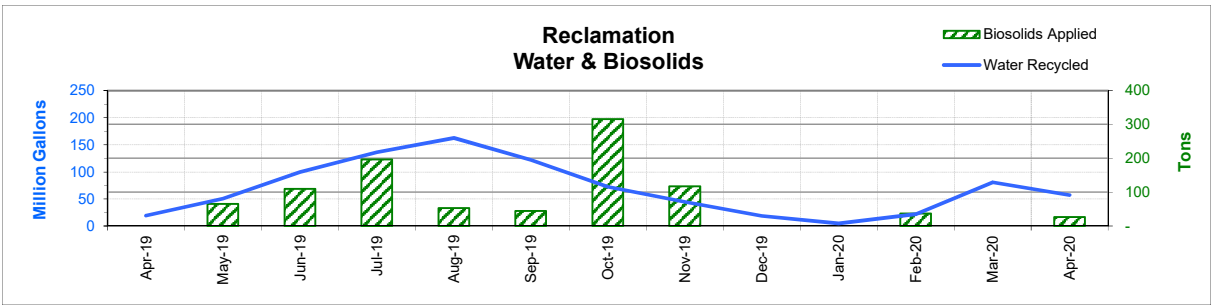
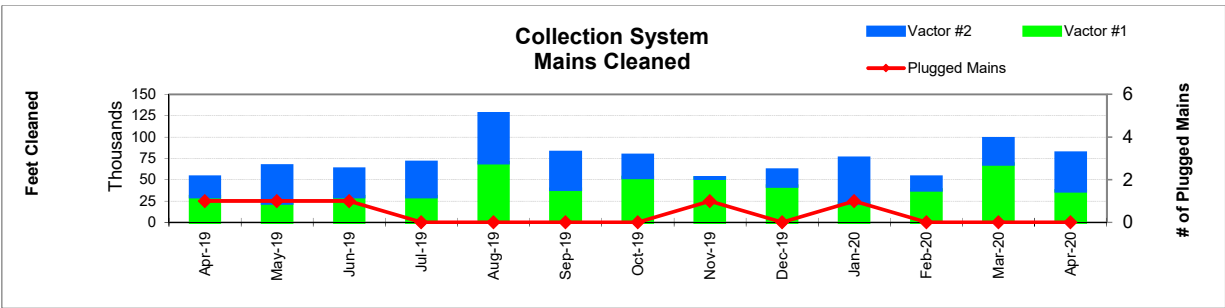
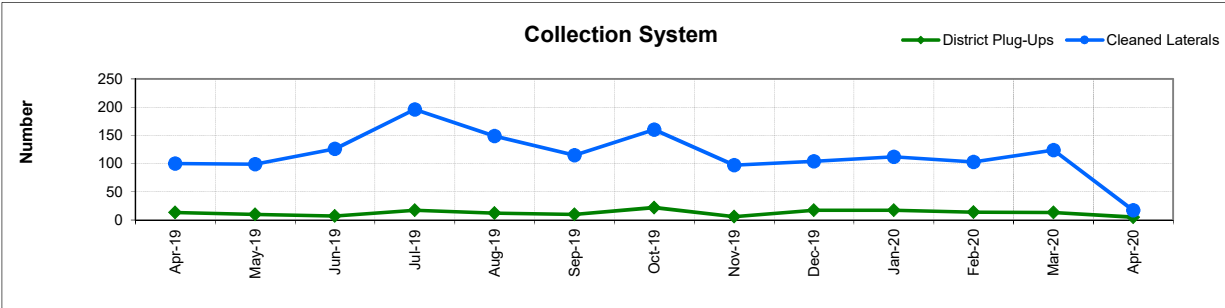
4/30/20 -Effective Rate of Return = 1.99%

1. Series 2012A's and 2017's principal/interest payments are made in Jul & Jan
2. Includes Debt Service and Intrafund Transfers; otherwise is 77.2%
3. See Capital Project Status report for details
4. More interest was earned on a higher-than-expected cash balance
5. In-house Labor for Capital Projects (Contra acct for Salaries)
6. Expect to receive some proceeds of SRF Loan for BVT and WNPS Projects at the end of FY.









**FUND BALANCES - MONTHLY**

<b>CATEGORY</b>	<b>Apr-19</b>	<b>May-19</b>	<b>Jun-19</b>	<b>Jul-19</b>	<b>Aug-19</b>	<b>Sep-19</b>	<b>Oct-19</b>	<b>Nov-19</b>	<b>Dec-19</b>	<b>Jan-20</b>	<b>Feb-20</b>	<b>Mar-20</b>	<b>Apr-20</b>
<i>(Thousand Dollars)</i>													
7800	24,793	24,164	23,784	17,246	748	415	753	2,858	14,616	13,107	13,136	13,427	21,767
7850	-	-	-	-	-	-	-	-	-	-	-	-	-
<b>Subtotal Operating</b>	<b>24,793</b>	<b>24,164</b>	<b>23,784</b>	<b>17,246</b>	<b>748</b>	<b>415</b>	<b>753</b>	<b>2,858</b>	<b>14,616</b>	<b>13,107</b>	<b>13,136</b>	<b>13,427</b>	<b>21,767</b>
Capital Improvement Projects	6,058	5,671	4,525	1,764	18,655	16,516	14,400	15,430	14,579	14,477	13,860	13,326	12,924
Debt Proceeds	-	-	-	-	-	-	-	-	-	-	-	-	-
<b>Subtotal Capital</b>	<b>6,058</b>	<b>5,671</b>	<b>4,525</b>	<b>1,764</b>	<b>18,655</b>	<b>16,516</b>	<b>14,400</b>	<b>15,430</b>	<b>14,579</b>	<b>14,477</b>	<b>13,860</b>	<b>13,326</b>	<b>12,924</b>
<b>Total Discretionary Funds</b>	<b>30,851</b>	<b>29,835</b>	<b>28,309</b>	<b>19,010</b>	<b>19,403</b>	<b>16,931</b>	<b>15,153</b>	<b>18,288</b>	<b>29,195</b>	<b>27,584</b>	<b>26,996</b>	<b>26,753</b>	<b>34,691</b>
Expansion Fund (Restricted)	-	93	-	-	-	2	-	-	-	-	-	-	-
<b>Total Restricted Funds</b>	<b>-</b>	<b>93</b>	<b>-</b>	<b>-</b>	<b>-</b>	<b>2</b>	<b>-</b>	<b>-</b>	<b>-</b>	<b>-</b>	<b>-</b>	<b>-</b>	<b>-</b>
<b>TOTAL ALL FUNDS</b>	<b>30,851</b>	<b>29,928</b>	<b>28,309</b>	<b>19,010</b>	<b>19,403</b>	<b>16,933</b>	<b>15,153</b>	<b>18,288</b>	<b>29,195</b>	<b>27,584</b>	<b>26,996</b>	<b>26,753</b>	<b>34,691</b>

# DEVELOPMENT WORKLOAD - MONTHLY

CATEGORY	Apr-19	May-19	Jun-19	Jul-19	Aug-19	Sep-19	Oct-19	Nov-19	Dec-19	Jan-20	Feb-20	Mar-20	Apr-20
<b><u>Phone Requests</u></b>													
Maps/Drawings	-	17	8	1	-	4	-	11	4	6	5	2	3
Lateral Permits	-	-	-	-	-	-	-	-	-	-	-	-	-
Policy Questions	5	10	6	8	1	4	2	2	-	2	5	5	-
Development Questions	53	79	64	43	29	38	32	40	29	32	38	29	24
Miscellaneous	29	29	18	25	16	18	29	13	24	10	12	8	5
<b>TOTAL</b>	<b>87</b>	<b>135</b>	<b>96</b>	<b>77</b>	<b>46</b>	<b>64</b>	<b>63</b>	<b>66</b>	<b>57</b>	<b>50</b>	<b>60</b>	<b>44</b>	<b>32</b>
<b><u>Counter Requests</u></b>													
Maps/Drawings	1	-	-	1	-	-	1	-	-	-	-	-	-
Lateral Permits	7	11	7	8	12	13	7	7	8	5	19	20	7
Policy Questions	4	-	-	-	-	-	-	1	-	-	-	1	-
Development Questions	10	7	10	3	4	13	4	7	7	4	2	2	-
Miscellaneous	0	2	0	0	1	0	-	-	-	1	1	1	-
<b>TOTAL</b>	<b>22</b>	<b>20</b>	<b>17</b>	<b>12</b>	<b>17</b>	<b>26</b>	<b>12</b>	<b>15</b>	<b>15</b>	<b>10</b>	<b>22</b>	<b>24</b>	<b>7</b>
<b><u>Initial Request (Referrals)</u></b>	<b>24</b>	<b>20</b>	<b>9</b>	<b>14</b>	<b>16</b>	<b>13</b>	<b>13</b>	<b>11</b>	<b>9</b>	<b>9</b>	<b>13</b>	<b>8</b>	<b>7</b>
<b><u>Connection Permits Issued</u></b>													
Residential Permits	2	6	3	2	14	2	5	3	0	9	22	6	6
Commercial Permits	2	3	1	6	1	2	1	3	1	1	-	2	1
Industrial Permits	-	-	-	-	-	-	-	-	-	-	-	-	-
<b>TOTAL PERMITS</b>	<b>4</b>	<b>9</b>	<b>4</b>	<b>8</b>	<b>15</b>	<b>4</b>	<b>6</b>	<b>6</b>	<b>1</b>	<b>10</b>	<b>22</b>	<b>8</b>	<b>7</b>
Residential Units	2	6	3	6	14	2	22	5	0	11	13	6	56
Commercial Units	2	3	1	2	1	2	1	133	1	1	-	2	1
<b>TOTAL UNITS</b>	<b>4</b>	<b>9</b>	<b>4</b>	<b>8</b>	<b>15</b>	<b>4</b>	<b>23</b>	<b>138</b>	<b>1</b>	<b>12</b>	<b>13</b>	<b>8</b>	<b>57</b>
<b><u>Annexations</u></b>													
Submitted	-	1	-	1	-	-	1	-	-	-	-	-	1
Acreage	-	0.50	-	16.04	-	-	44.84	-	-	-	-	-	0.50
<b><u>Plans Reviewed</u></b>													
<b><u>Subdivisions/Sites</u></b>													
First Submittal	5	14	8	7	8	8	5	8	24	12	5	12	7
Second Submittal	3	8	6	5	5	2	2	6	6	12	7	4	8
Third Submittal	4	10	5	5	1	3	7	3	6	4	5	3	2
<b><u>Building/Tenant Improvements</u></b>													
First Submittal	15	3	9	12	6	6	13	4	3	12	9	9	5
Second Submittal	2	3	4	4	1	4	5	1	4	3	2	6	4
Third Submittal	7	-	7	6	4	3	7	5	3	1	2	5	3
<b><u>Miscellaneous Plan Reviews</u></b>	<b>-</b>	<b>-</b>	<b>-</b>	<b>-</b>	<b>-</b>	<b>-</b>	<b>-</b>	<b>-</b>	<b>-</b>	<b>-</b>	<b>-</b>	<b>-</b>	<b>-</b>
<b>TOTAL PLANS REVIEWED</b>	<b>36</b>	<b>38</b>	<b>39</b>	<b>39</b>	<b>25</b>	<b>26</b>	<b>39</b>	<b>27</b>	<b>46</b>	<b>44</b>	<b>30</b>	<b>39</b>	<b>29</b>

# INSPECTION WORKLOAD - MONTHLY

CATEGORY	Apr-19	May-19	Jun-19	Jul-19	Aug-19	Sep-19	Oct-19	Nov-19	Dec-19	Jan-20	Feb-20	Mar-20	Apr-20
<b><u>CONSTRUCTION</u></b>													
Locating Sewers	-	-	-	-	-	-	-	-	-	-	-	-	-
Permit Processing	-	-	-	-	-	-	-	-	-	-	-	-	-
Preconstruction Meetings	5	7	2	5	11	4	6	1	2	4	4	3	3
Inspections - Mains	-	-	1	5	1	11	-	1	-	-	-	-	-
Inspections - Manholes	18	6	7	13	12	77	1	6	3	9	16	37	-
Inspections - Laterals	21	8	27	40	15	5	12	22	10	15	8	13	48
Inspections - Cleanouts	46	43	24	59	43	7	54	33	44	26	32	35	90
Inspections - Review Video	1	1	1	-	-	2	-	1	-	1	2	4	2
Demo - Septic Tanks	-	-	-	-	-	-	-	-	-	-	-	-	-
Demo - Buildings	-	-	-	-	-	-	-	-	-	-	-	-	-
Update Record Drawings	-	-	-	-	-	-	-	-	-	-	-	-	-
<b>TOTAL</b>	<b>91</b>	<b>65</b>	<b>62</b>	<b>122</b>	<b>82</b>	<b>106</b>	<b>73</b>	<b>64</b>	<b>59</b>	<b>55</b>	<b>62</b>	<b>92</b>	<b>143</b>
<b><u>MISCELLANEOUS</u></b>													
Meter Readings	4	14	-	-	-	-	-	-	-	59	1	-	4
Washdown Facility Inspections	-	-	-	-	-	-	-	-	-	-	-	-	-
General Customer Assistance	20	16	-	-	32	31	12	12	-	6	9	15	14
City of Napa Water Discharge	-	-	-	-	-	-	-	-	-	-	-	-	-
<b>TOTAL</b>	<b>24</b>	<b>30</b>	<b>-</b>	<b>-</b>	<b>32</b>	<b>31</b>	<b>12</b>	<b>12</b>	<b>-</b>	<b>65</b>	<b>10</b>	<b>15</b>	<b>18</b>
<b><u>SPECIAL PROJECTS</u></b>													
	20	21	40	25	22	35	23	19	30	10	0	11	26

# POLLUTION PREVENTION WORKLOAD - MONTHLY

CATEGORY	Apr-19	May-19	Jun-19	Jul-19	Aug-19	Sep-19	Oct-19	Nov-19	Dec-19	Jan-20	Feb-20	Mar-20	Apr-20
<b><u>Outreach Activities</u></b>													
Plant Tours Conducted	10	1	6	1	0	0	2	5	0	3	2	0	0
Presentations Made	3	1	2	0	0	0	5	7	0	1	0	1	0
<b>Total Outreach Activities</b>	13	2	8	1	-	-	7	12	-	4	2	1	-
<b><u>Inspections Conducted</u></b>													
Food Service Facilities	47	21	-	-	1	-	-	-	1	1	62	21	-
Auto Body & Car Wash	-	-	-	-	-	-	-	-	-	-	-	-	-
Other	-	-	-	-	-	-	-	-	-	-	-	-	-
<b>Total Inspections</b>	47	21	-	-	1	-	-	-	1	1	62	21	-
<b><u>Compliance Issues</u></b>													
NOVs Issued	1	2	1	-	1	1	1	3	-	2	-	-	-
NOEs Issued	-	-	-	-	-	-	-	1	-	2	1	1	1
Non-Compliant-FOG	-	-	-	-	-	-	-	-	-	-	-	-	-
<b>Total Compliance Issues</b>	1	2	1	-	1	1	1	4	-	4	1	1	1
<b><u>Pollution Prevention</u></b>													
Clothes Washer Rebates	19	-	2	-	-	-	-	-	-	-	-	-	-
Toilet Retrofit Rebates	-	-	-	-	-	-	-	-	-	-	-	-	-
Pharmaceuticals Diverted (in lbs)	-	45	73	132	-	-	77	-	44	-	-	-	-

**RECYCLED WATER DELIVERIES - MONTHLY**

	<b>Acres</b>	<b>Apr-19</b>	<b>May-19</b>	<b>Jun-19</b>	<b>Jul-19</b>	<b>Aug-19</b>	<b>Sep-19</b>	<b>Oct-19</b>	<b>Nov-19</b>	<b>Dec-19</b>	<b>Jan-20</b>	<b>Feb-20</b>	<b>Mar-20</b>	<b>Apr-20</b>
<b>MONTHLY (MG)</b>														
<b>Water Sold</b>														
Golf Courses	638.0	9.555	25.976	58.629	69.590	65.339	49.784	31.724	16.340	0.007	0.001	12.483	20.366	24.765
Cemeteries	57.1	1.494	3.671	3.658	5.515	5.659	4.822	4.061	3.028	0.250	0.222	0.514	3.078	3.422
Parks	18.5	0.020	0.263	0.843	0.939	1.219	1.111	0.615	0.028	-	-	-	0.001	-
Schools	12.6	0.251	0.988	1.655	2.196	1.712	1.635	1.312	0.792	0.085	0.044	0.157	0.685	0.716
Commerical	166.5	4.974	10.516	12.142	18.578	17.787	15.775	13.443	11.762	2.254	0.986	3.194	9.822	9.213
Vineyards	3,442.0	3.250	6.107	10.475	20.951	42.981	27.367	13.852	7.027	15.494	3.170	5.250	46.305	17.728
Trucked Water	175.0	0.110	0.421	0.533	1.293	1.374	1.425	1.401	1.097	0.476	0.227	0.134	0.415	1.147
<b>Subtotal Sales</b>	<b>4,509.6</b>	<b>19.654</b>	<b>47.943</b>	<b>87.935</b>	<b>119.063</b>	<b>136.071</b>	<b>101.920</b>	<b>66.409</b>	<b>40.073</b>	<b>18.567</b>	<b>4.650</b>	<b>21.732</b>	<b>80.671</b>	<b>56.990</b>
<b>District Use</b>														
Jameson	330.0	-	-	-	-	0.470	-	-	-	-	0.024	-	-	-
Somky	213.0	-	2.504	11.985	17.012	25.944	20.394	6.391	4.513	-	0.006	0.050	0.026	0.080
Fagundes/Airport	50.5	-	-	-	-	-	-	-	-	-	-	-	-	-
<b>Subtotal District</b>	<b>593.5</b>	<b>-</b>	<b>2.504</b>	<b>11.985</b>	<b>17.012</b>	<b>26.413</b>	<b>20.394</b>	<b>6.391</b>	<b>4.513</b>	<b>-</b>	<b>0.030</b>	<b>0.050</b>	<b>0.026</b>	<b>0.080</b>
<b>TOTAL DELIVERED</b>	<b>5,103.1</b>	<b>19.654</b>	<b>50.447</b>	<b>99.920</b>	<b>136.074</b>	<b>162.484</b>	<b>122.314</b>	<b>72.800</b>	<b>44.586</b>	<b>18.567</b>	<b>4.681</b>	<b>21.783</b>	<b>80.697</b>	<b>57.070</b>
<b>ANNUAL (AF)</b>														
<b>Water Sold</b>														
Golf Courses	638.0	991	909	880	897	921	939	963	1,003	1,003	1,003	1,042	1,104	1,151
Cemeteries	57.1	91	93	93	95	97	99	102	102	101	100	102	110	116
Parks	18.5	15	13	13	13	14	16	17	15	15	15	15	15	15
Schools	12.6	37	35	33	34	33	33	33	33	33	33	33	35	37
Commerical	166.5	341	343	342	350	346	342	323	336	337	336	344	372	385
Vineyards	3,442.0	470	470	436	367	399	418	431	431	477	486	500	621	665
Trucked Water	175.0	11	11	11	13	15	18	22	24	25	26	26	27	31
<b>Subtotal Sales</b>	<b>4,509.6</b>	<b>1,956</b>	<b>1,874</b>	<b>1,808</b>	<b>1,768</b>	<b>1,824</b>	<b>1,864</b>	<b>1,891</b>	<b>1,944</b>	<b>1,992</b>	<b>2,000</b>	<b>2,063</b>	<b>2,285</b>	<b>2,400</b>
<b>District Use</b>														
Jameson	330.0	15	15	15	15	16	1	1	1	1	2	2	2	2
Somky	213.0	171	143	139	191	261	276	259	272	272	272	273	273	273
Fagundes/Airport	50.5	-	-	-	-	-	-	-	-	-	-	-	-	-
<b>Subtotal District</b>	<b>593.5</b>	<b>187</b>	<b>158</b>	<b>154</b>	<b>206</b>	<b>277</b>	<b>277</b>	<b>260</b>	<b>274</b>	<b>274</b>	<b>274</b>	<b>274</b>	<b>274</b>	<b>274</b>
<b>TOTAL DELIVERED</b>	<b>5,103.1</b>	<b>2,143</b>	<b>2,032</b>	<b>1,962</b>	<b>1,974</b>	<b>2,101</b>	<b>2,141</b>	<b>2,151</b>	<b>2,218</b>	<b>2,266</b>	<b>2,273</b>	<b>2,337</b>	<b>2,559</b>	<b>2,674</b>

# BIOSOLIDS HANDLING - MONTHLY

Site	Apr-19	May-19	Jun-19	Jul-19	Aug-19	Sep-19	Oct-19	Nov-19	Dec-19	Jan-20	Feb-20	Mar-20	Apr-20
<u>Land Applied by NSD</u>													
Somky		65	109										
Fagundes						44							
Jameson Canyon	-	-	-	197	52		316	117	-	-	37	-	26
Subtotal by NSD	-	65	109	197	52	44	316	117	-	-	37	-	26
<u>Land Applied by Contractor</u>													
Somky													
Fagundes													
Jameson Canyon													
Subtotal by Contractor	-	-	-	-	-	-	-	-	-	-	-	-	-
<b>Total Land Applied</b>	<b>-</b>	<b>65</b>	<b>109</b>	<b>197</b>	<b>52</b>	<b>44</b>	<b>316</b>	<b>117</b>	<b>-</b>	<b>-</b>	<b>37</b>	<b>-</b>	<b>26</b>
<b>Off Site (Contractor)</b>													
<b>Total (tons)</b>	<b>-</b>	<b>65</b>	<b>109</b>	<b>197</b>	<b>52</b>	<b>44</b>	<b>316</b>	<b>117</b>	<b>-</b>	<b>-</b>	<b>37</b>	<b>-</b>	<b>26</b>



**COLLECTION SYSTEM MAINTENANCE - MONTHLY**

<b>CATEGORY</b>	<b>Apr-19</b>	<b>May-19</b>	<b>Jun-19</b>	<b>Jul-19</b>	<b>Aug-19</b>	<b>Sep-19</b>	<b>Oct-19</b>	<b>Nov-19</b>	<b>Dec-19</b>	<b>Jan-20</b>	<b>Feb-20</b>	<b>Mar-20</b>	<b>Apr-20</b>
<b><u>Plugups</u></b>													
<b>Total Calls</b>	43	46	40	45	46	45	68	38	60	68	39	35	31
Business Hours	23	28	31	33	30	36	51	28	37	42	25	22	23
After Hours	20	18	9	12	16	9	17	10	23	22	14	13	8
District's	13	10	7	17	12	10	22	6	17	17	14	13	5
Property Owner's	30	35	32	26	34	32	43	32	42	46	24	22	26
Plugged Main Lines	1	1	1	-	-	-	-	1	-	1	-	-	-
Run Lateral w/Eel	100	99	126	196	149	115	160	97	104	112	103	124	17
<b><u>Cleaning (feet of sewer)</u></b>													
Vactor #1	30,224	22,498	30,232	30,283	69,780	38,969	52,711	51,764	42,519	22,372	37,916	68,243	36,849
Vactor #2	22,691	43,466	32,180	39,800	57,405	43,059	25,762	610	18,811	52,620	15,049	29,691	44,336
Hydro													
Rodder									558	-	-		2,915
<b>Total (feet)</b>	<b>52,916</b>	<b>65,964</b>	<b>62,412</b>	<b>70,083</b>	<b>127,185</b>	<b>82,028</b>	<b>78,473</b>	<b>52,374</b>	<b>61,888</b>	<b>74,993</b>	<b>52,965</b>	<b>97,933</b>	<b>84,100</b>
<b><u>Cleaning Days</u></b>													
Vactor #1	13	10	12	12	18	18	20	18	17	10	15	16	10
Vactor #2	8	19	15	16	21	15	8	1	10	16	5	8	11
Hydro													
Rodder									2				2
<b><u>Feet/day</u></b>													
Vactor #1	2,300	2,250	2,500	2,500	3,900	2,150	2,650	2,900	2,500	2,250	2,550	4,250	3,700
Vactor #2	2,850	2,300	2,150	2,500	2,750	2,850	3,200	600	1,900	3,300	3,000	3,700	4,050
Hydro													
Rodder									300			-	1,450
<b><u>Video Inspections</u></b>													
Mains (feet)	15,089	24,716	23,914	32,551	40,819	22,837	17,404	10,825	-	13,832	30,961	26,158	6,798
Laterals (each)	204	173	177	254	214	190	247	165	182	188	180	206	75
<b><u>Construction (each)</u></b>													
Cleanouts	15	12	24	15	17	15	20	10	4	8	15	15	1
Laterals	4	13	12	14	16	16	10	9	10	10	8	4	-
Mains				-	-		-		-	1	-	-	-
Manholes				-	2		2		-		-	5	-
Other												-	-
<b><u>USA Markings</u></b>													
Regular (w/in 2 days)	327	338	292	378	363	331	332	224	290	271	423	232	258
Emergency (w/in 2 hours)	20	20	24	21	28	23	21	7	21	22	9	11	36

## WASTEWATER PLANT OPERATIONS DATA - MONTHLY

CATEGORY	Units	Apr-19	May-19	Jun-19	Jul-19	Aug-19	Sep-19	Oct-19	Nov-19	Dec-19	Jan-20	Feb-20	Mar-20	Apr-20
<b>FLOWES</b>		<b>30</b>	<b>31</b>	<b>30</b>	<b>31</b>	<b>31</b>	<b>30</b>	<b>31</b>	<b>30</b>	<b>31</b>	<b>31</b>	<b>29</b>	<b>31</b>	<b>30</b>
<b>Influent</b>	<b>MG</b>	<b>261.4</b>	<b>275.4</b>	<b>213.6</b>	<b>199.3</b>	<b>192.5</b>	<b>182.1</b>	<b>181.6</b>	<b>177.6</b>	<b>281.6</b>	<b>271.0</b>	<b>204.9</b>	<b>212.9</b>	<b>214.3</b>
<b>Average Day</b>	<b>MGD</b>	<b>8.7</b>	<b>8.9</b>	<b>7.1</b>	<b>6.4</b>	<b>6.2</b>	<b>6.3</b>	<b>5.9</b>	<b>5.9</b>	<b>9.1</b>	<b>8.7</b>	<b>7.1</b>	<b>6.9</b>	<b>7.1</b>
Maximum Day	Date	1-Apr	19-May	1-Jun	2-Jul	29-Aug	2-Sep	29-Oct	27-Nov	7-Dec	16-Jan	1-Feb	19-Mar	5-Apr
Maximum Day Flow	MG	11.7	17.2	8.0	6.7	6.3	6.3	6.1	7.1	13.7	11.6	8.1	7.5	11.2
Minimum Day	Date	30-Apr	14-May	27-Jun	24-Jul	6-Jan	24-Sep	10-Oct	1-Nov	17-Dec	7-Jan	25-Feb	12-Mar	30-Apr
Minimum Day Flow	MG	7.4	6.8	6.6	6.2	6.0	5.9	5.5	5.7	7.1	7.3	6.5	6.5	6.4
<b>Effluent</b>	<b>MG</b>	<b>449.8</b>	<b>55.5</b>	<b>108.7</b>	<b>128.8</b>	<b>167.8</b>	<b>123.5</b>	<b>78.4</b>	<b>309.7</b>	<b>344.4</b>	<b>286.6</b>	<b>204.0</b>	<b>133.7</b>	<b>236.6</b>
River Discharge	MG	424.4	-	-	-	-	-	-	265.0	323.2	271.3	177.3	77.9	174.6
Recycled Flow	MG	25.4	55.5	108.7	128.8	167.8	123.5	78.4	44.6	21.2	15.3	26.7	55.7	58.6
<b>BIOSOLIDS</b>	<b>Tons</b>	<b>575</b>	<b>493</b>	<b>506</b>	<b>624</b>	<b>830</b>	<b>714</b>	<b>750</b>	<b>762</b>	<b>769</b>	<b>643</b>	<b>523</b>	<b>685</b>	<b>638</b>
Wet Tons Generated from Pond	Tons													
Wet Tons Generated from Plant	Tons	575	493	506	624	830	714	750	762	769	643	523	685	638
% Solids Liquid	%													
% Solids Cake	%													
% Solids Land Application	%													
<b>Wet Tons Hauled Offsite</b>	<b>Tons</b>													
<b>POLYMER USE</b>	<b>Gallons</b>	<b>7,851</b>	<b>5,053</b>	<b>5,921</b>	<b>3,745</b>	<b>3,153</b>	<b>3,038</b>	<b>3,499</b>	<b>11,780</b>	<b>4,681</b>	<b>1,363</b>	<b>3,036</b>	<b>2,498</b>	<b>2,490</b>
Pond Pre-Flocculators	Gallons	4,704	288	224	494	326	257	540	6,311	2,114	-	217	-	-
Flocculator Polymer 1	Gallons	-	-	-	-	-	-	-	-	-	-	-	-	-
Flocculator Polymer 2	Gallons	755	79	-	119	61	86	203	427	382	206	37	146	301
Filter Polymer 1	Gallons	1,584	4,100	5,102	2,499	1,963	1,832	1,841	4,401	1,378	354	2,128	1,608	1,463
Filter Polymer 2	Gallons	-	-	-	-	-	-	-	-	-	-	-	120	179
Belt Presses	Gallons	808	586	595	633	803	863	915	641	807	803	654	624	547
<b>ENERGY</b>														
<b>Total Electricity Used</b>	<b>MWH</b>	<b>667</b>	<b>601</b>	<b>616</b>	<b>625</b>	<b>698</b>	<b>688</b>	<b>648</b>	<b>680</b>	<b>759</b>	<b>654</b>	<b>547</b>	<b>607</b>	<b>594</b>
Purchased from PGE	MWH	423	317	346	358	429	431	423	433	485	395	295	368	361
Produced from Co-Gen	MWH	244	284	270	267	269	257	225	247	274	259	252	239	233
Percent Produced	%	37%	47%	44%	43%	39%	35%	35%	36%	36%	40%	38%	33%	32%
Purchased from Solar	MWH	173	178	211	217	200	171	141	98	62	89	136	142	162
Percent Produced		26%	30%	34%	35%	29%	25%	22%	37%	8%	14%	25%	23%	27%
Purchased Natural Gas	Therms	1,513	1,431	1,727	2,028	1,180	1,222	1,633	1,800	2,220	1,795	1,595	2,140	1,737
Methane Flared Off	MCF	130	164	324	282	251	126	220	214	593	88	190	731	137
<b>Stand By Calls</b>	<b>#</b>	<b>26</b>	<b>80</b>	<b>67</b>	<b>64</b>	<b>50</b>	<b>50</b>	<b>59</b>	<b>88</b>	<b>66</b>	<b>65</b>	<b>47</b>	<b>51</b>	<b>39</b>
<b>Violations</b>	<b>#</b>	<b>-</b>	<b>-</b>	<b>-</b>	<b>-</b>	<b>-</b>	<b>-</b>	<b>-</b>	<b>-</b>	<b>-</b>	<b>-</b>	<b>-</b>	<b>-</b>	<b>-</b>

# WASTEWATER PLANT MAINTENANCE and LABORATORY DATA - MONTHLY

CATEGORY	Apr-19	May-19	Jun-19	Jul-19	Aug-19	Sep-19	Oct-19	Nov-19	Dec-19	Jan-20	Feb-20	Mar-20	Apr-20
<b><u>Scheduled</u></b>													
Old	10	15	25	31	7	7	8	17	24	23	49	5	6
New	109	89	95	96	85	94	106	89	87	99	75	90	110
Completed	104	79	89	120	85	93	97	82	88	73	119	89	107
<b>New Balance</b>	<b>15</b>	<b>25</b>	<b>31</b>	<b>7</b>	<b>7</b>	<b>8</b>	<b>17</b>	<b>24</b>	<b>23</b>	<b>49</b>	<b>5</b>	<b>6</b>	<b>9</b>
<b><u>Unscheduled</u></b>													
Old	23	22	21	18	22	21	21	24	20	19	32	23	16
New	15	31	17	32	28	20	39	24	29	24	21	15	8
Completed	16	32	20	28	29	20	36	28	30	11	30	22	11
<b>New Balance</b>	<b>22</b>	<b>21</b>	<b>18</b>	<b>22</b>	<b>21</b>	<b>21</b>	<b>24</b>	<b>20</b>	<b>19</b>	<b>32</b>	<b>23</b>	<b>16</b>	<b>13</b>
<b><u>Total Work Orders</u></b>													
Old	33	120	46	49	29	28	29	41	44	42	81	28	22
New	124	11	112	128	113	114	145	113	116	123	96	105	118
Completed	120	46	109	150	113	113	133	110	116	84	149	112	118
<b>New Balance</b>	<b>37</b>	<b>46</b>	<b>49</b>	<b>29</b>	<b>28</b>	<b>29</b>	<b>41</b>	<b>44</b>	<b>42</b>	<b>81</b>	<b>28</b>	<b>22</b>	<b>22</b>
<b><u>LAB ANALYSES</u></b>													
<b><u>Sample Type</u></b>													
Regulatory	155	190	138	129	149	142	147	240	176	157	192	213	237
Process Control	1,195	760	770	869	838	818	893	1,010	1,072	1,208	1,039	1,058	1,015
Special Request	-	1	15	1	22	26	46	38	16	-	32	16	12
Quality Control/Assurance	1,447	812	539	632	600	607	774	957	839	923	1,324	1,043	1,058
<b>TOTAL</b>	<b>2,797</b>	<b>1,763</b>	<b>1,462</b>	<b>1,631</b>	<b>1,609</b>	<b>1,593</b>	<b>1,860</b>	<b>2,245</b>	<b>2,103</b>	<b>2,288</b>	<b>2,587</b>	<b>2,330</b>	<b>2,322</b>

**Summary of NSD Capital Project Status  
through 04-30-20**

Proj #	Description	FY 19/20 Budget	FY 18/19 Carry Forwards	Adj.	Final FY 19/20 Budget	Encumbrance	Costs Paid to Date	Budget Remaining	% Budget Expended
	<b><u>COLLECTION SYSTEM - PROJECTS</u></b>								
13701	Main Line Sewer Rehabilitation	60,000			60,000	-	17,300	42,700	29%
13702	Manhole Raising/Rehabilitation	332,600			332,600	-	160,565	172,035	48%
13703	Lateral Replacement/Rehabilitation	110,000		40,000	150,000	-	111,437	38,563	74%
13704	Cleanouts Installation/Rehabilitation	107,000		(40,000)	67,000	-	46,084	20,916	69%
13705	Inflow & Infiltration (I&I) Reduction Program	221,700			221,700	167,477	11,151	43,072	5%
14703	Browns Valley Rd & First St	7,000,000			7,000,000	1,799,911	70,857	5,129,232	1%
17704	Infltrtn Rehab - SSMH/PL (CI-)	-	25,500		25,500	-	-	25,500	-
18701	I&I Smoke Testing	150,000			150,000	14,071	28,680	107,249	19%
18702	Collection System Asset Management Software	-	443,550		443,550	242,293	190,651	10,606	43%
18703	Upper Lateral Rehab - Basin L (Pilot) #3	166,300	3,200		169,500	-	63,156	106,344	37%
18706	Sewer System Inflow/Infiltration 2019	3,538,100	313,850		3,851,950	305,735	3,405,210	141,005	88%
19701	66-inch Trunk Rehabilitation (Kaiser to IPS)	4,000,000	450,000		4,450,000	276,074	310,300	3,863,626	7%
19703	2020 Collection System Rehabilitation	3,169,600	9,800		3,179,400	2,801,061	268,844	109,495	8%
19727	Collection System Master Plan	1,071,200	632,350		1,703,550	132,854	399,435	1,171,261	23%
20701	Upper Lateral Rehab - Pilot #5	5,000			5,000	-	50	4,950	1%
20702	Manhole Rehabilitation	250,000			250,000	39,230	153,633	57,137	61%
20703	2021 Collection System Rehabilitation	20,000			20,000	-	867	19,133	4%
	<b><u>COLLECTION SYSTEM - EQUIPMENT</u></b>								
20704	Locatable Mini-Camera #3 Replacement	11,900		(200)	11,700	-	9,382	2,318	80%
20705	Eel Replacement #2	5,900		200	6,100	-	5,688	412	93%
	<b><u>COLLECTION SYSTEM - LIFT STATIONS</u></b>								
17711	West Napa PS - Rehab	5,500,000			5,500,000	3,394,139	255,515	1,850,346	5%
19705	Stonecrest PS Pump Rebuild	-	40,100		40,100	34,600	15,266	(9,766)	38%
	<b><u>TREATMENT - PROJECTS</u></b>								
13745	Pond 1 Dredge	2,100,000	237,150		2,337,150	2,203,119	55,601	78,430	2%
18736	Treatment Plant Project 2018	-	15,000		15,000	10,901	139	3,961	1%
18740	Treatment Plant Project 2019	600,000	672,700		1,272,700	84,226	1,186,535	1,940	93%
19717	WWTP MP - Pond Transfer Structures 2 to 3	-	259,700		259,700	-	12,800	246,900	5%
20706	WWTP Master Plan	5,000			5,000	-	4,986	14	100%
20707	Pond Levee Repair	100,000			100,000	50,000	1,918	48,082	2%
20708	2020 Treatment Plant Improvements Project	1,500,000			1,500,000	60,019	41,588	1,398,393	3%
20724	River Park PS FM Replacement			100,000	100,000	-	71,123	28,877	71%

**Summary of NSD Capital Project Status  
through 04-30-20**

Proj #	Description	FY 19/20 Budget	FY 18/19 Carry Forwards	Adj.	Final FY 19/20 Budget	Encumbrance	Costs Paid to Date	Budget Remaining	% Budget Expended
	<b><u>TREATMENT - EQUIPMENT</u></b>								
13735	Dual Fuel Boiler Burner	-	121,550		121,550	32,908	65,815	22,828	54%
15707	Main - DAFT Overflow Pumps (2) Cornell	11,900			11,900	-	-	11,900	-
15711	Rotork Actuator Replacement	-	7,600		7,600	-	-	7,600	-
16712	Main - Primary Clarifier Mech/Struct Rehabilitation	814,000	152,300		966,300	881,262	55,242	29,795	6%
17715	Turbidimeters (7) Tertiary Rplcmnts	-	16,000		16,000	-	-	16,000	-
17726	Headworks Equipment Rehab/Replacment	1,000,000	667,600		1,667,600	267,384	1,297,209	103,007	78%
18711	3W Strainer	-	24,350		24,350	-	-	24,350	-
18715	Muffle Furnace - Replacement	-	5,000		5,000	-	4,321	679	86%
18716	Rotork Actuator Replacement	-	6,400		6,400	-	-	6,400	-
18719	Filter Flow Control - Rotork Valves	-	9,900		9,900	-	-	9,900	-
18720	Neuros Blowers Rebuild	-	64,300		64,300	-	-	64,300	-
18722	FOG Station Water Heater	20,000	5,000		25,000	-	-	25,000	-
19706	WWTP MP - 3W System Improvements Phase 2	-	295,600	(41,100)	254,500	-	110	254,390	0%
19708	Main - Rotork Actuator Replacement	-	95,000		95,000	-	19,115	75,885	20%
19709	Main - Polymer Tank (3) Replacement	-	10,000		10,000	-	-	10,000	-
19710	Main - 12kV Redundant Line	-	119,150		119,150	67,570	8,022	43,558	7%
19712	Main - Utility Generator Power Transition	-	35,000		35,000	-	-	35,000	-
19713	Main - Cogen Hot Water to FOG Pad	-	50,000		50,000	-	-	50,000	-
19715	Main - ARV Replacement	31,100			31,100	-	-	31,100	-
20709	Main - AB Caustic Pumps & Enclosure	85,700			85,700	13,071	17,107	55,522	20%
20710	Main - Septage Pump & Motor Replacement	28,700			28,700	20,587	5,317	2,796	19%
20711	Main - Marsh-to-Pond Pump Station Upgrade	88,700			88,700	-	670	88,030	1%
20712	Main - Grit Pump Rebuild	60,000			60,000	-	25,757	34,243	43%
20713	Main - Elevator Control Update	400,000			400,000	-	-	400,000	-
20714	Main - Flare Rebuild	50,000			50,000	-	-	50,000	-
20715	Main - Concrete Pipe Chase Covers	80,000			80,000	-	-	80,000	-
20716	Plant Door Replacement - Phase 1	22,200			22,200	-	-	22,200	-
20717	Vehicle 163 - Ford Ranger (Replace w/ F-150)	33,300			33,300	-	30,647	2,653	92%
20718	Vehicle 162 - Ford F-250 Diesel	43,600		1,100	44,700	-	44,655	45	100%
20719	Vehicle 206 - Forklift TH103 (Telehandler)	103,100			103,100	-	-	103,100	-
	<b><u>LAB - EQUIPMENT</u></b>								
20720	Lab - Sampler 4700 Replacement (2)	20,000			20,000	-	14,596	5,404	73%
	<b><u>SCADA</u></b>								
18729	SCADA MP Project #1 - Network Monitoring	-	46,200		46,200	-	-	46,200	-

**Summary of NSD Capital Project Status  
through 04-30-20**

<b>Proj #</b>	<b>Description</b>	<b>FY 19/20 Budget</b>	<b>FY 18/19 Carry Forwards</b>	<b>Adj.</b>	<b>Final FY 19/20 Budget</b>	<b>Encumbrance</b>	<b>Costs Paid to Date</b>	<b>Budget Remaining</b>	<b>% Budget Expended</b>
19718	SCADA MP Phase 5 Security Study	-	88,250		88,250	6,712	34,558	46,980	39%
	<b><u>RECYCLING - PROJECTS</u></b>								
13727	North Bay Wate Reuse Project	150,000			150,000	-	13,433	136,567	9%
18730	Jameson 24" Flow Meter Rehab	-	6,200		6,200	-	-	6,200	-
18731	Coombsville Truck Fill Station	300,000	144,400		444,400	82,906	296,744	64,750	67%
19719	24-inch Valve Replacement - Kirkland Line	-	5,000		5,000	-	-	5,000	-
19720	Jameson PS VFD	-	68,900	(68,900)	-	-	-	-	-
20721	Kirkland Recycled Water Pipeline Rehabilitaton	60,000		10,000	70,000	46,639	15,630	7,731	22%
	<b><u>RECYCLING - EQUIPMENT</u></b>								
19722	Vehicle 723/720 - Attachments/Implements	29,700		(29,700)	-	-	-	-	-
20722	Badger Meter Replacement	80,000			80,000	-	-	80,000	-
20723	CT-5 Composter (Ag-Bag)	-	-	29,700	29,700	-	-	29,700	-
								-	
	<b><u>OTHER</u></b>							-	-
13729	Development Technical Support	337,000			337,000	-	218,137	118,863	65%
19723	AV System Replacement - Conference Rooms	-	20,000		20,000	-	-	20,000	-
19725	Vehicle 011 - CSET Trailer	-	7,100	(1,100)	6,000	-	3,800	2,200	63%
		<b>\$33,873,300</b>	<b>\$5,173,700</b>	<b>-</b>	<b>\$39,047,000</b>	<b>\$13,034,749</b>	<b>\$9,069,645</b>	<b>\$16,942,607</b>	<b>23%</b>