



Napa Sanitation District

General Manager's Report

for

January, 2020

Contents:

- a. Transmittal Memo
- b. Budget Status and Cash Summary
- c. Key Information Graphs – Fund Balances, Treatment Plant and Collection
- d. Fund Balances
- e. Development Processing
- f. Construction Inspection
- g. Pollution Prevention
- h. Recycled Water Deliveries
- i. Biosolids Handling
- j. Collection System Maintenance
- k. Treatment Plant Operations
- l. Treatment Plant Maintenance & Laboratory
- m. Capital Project Expenditure Summary



NAPA SANITATION DISTRICT

General Manager's Report

DATE: March 4, 2020

FROM: Timothy B. Healy, General Manager

SUBJECT: General Manager's Report for January 2020

REGULATORY COMPLIANCE:

| | |
|---------------------------------|--|
| Collection System Compliance: | 0 Category 1 SSO's, 0 Category 2 SSO's, and 4 Category 3 SSO's |
| NPDES Permit (WWTP) Compliance: | Full compliance with all regulations |
| Air Quality Compliance: | Full compliance with all regulations |
| Recycled Water Compliance: | Full compliance with all regulations |
| Biosolids Compliance: | Full compliance with all regulations |
| Significant Comments: | None |

FISCAL STATUS:

| | |
|----------------------------------|---|
| Period Covered: | July 1, 2019 – January 31, 2020 |
| Percent Fiscal Year: | 58.3% |
| Operating Expenditures to date: | 46.6% |
| Historical Expenditures to date: | 67.5% |
| Significant Comments: | In prior years, typically an intrafund transfer from Operating to Capital was done for cash flow purposes. As a result of some yearend accounting adjustments last fiscal year, the Capital Fund has had sufficient funds for this fiscal year, and a intrafund transfer had not been needed. This caused a lower-than-average Operating Expenditures to date in comparison to the Historical Expenditures to date. |

PERSONNEL:

Significant events for the month of January 2020 in the Human Resources Department:

| | |
|-------------------------|--|
| New Hires: | None |
| Separations: | None |
| Promotions: | None |
| Recruitment Activities: | Testing for recruitment for Plant Attendant position |
| Injuries: | None |

COLLECTIONS:

Significant events for the month of January 2020 in Collection System Maintenance include:

- The District had 0 Category 1 Sanitary Sewer Overflows (SSO's), 0 Category 2 SSO's and 4 Category 3 SSO's during the month. (A Category 1 is defined as an SSO that reached a drainage channel and/or surface water or; an SSO that reached a storm drainpipe that was not fully recovered and returned to the sanitary sewer system. A Category 2 is defined as an SSO that is equal to or greater than 1,000 gallons that did not reach a surface water. A Category 3 is defined as an SSO that is less than 1,000 gallons that did not reach a surface water. These are usually minor overflows of less than 10 gallons from cleanouts on District laterals that can be cleaned up by the crews.)
- The repair crew installed 1 cleanouts and repaired 3. They also repaired 3 lateral and lined 7 laterals. Additionally, the service response/programs crew completed 126 work orders in support of the grease and odor control program, responded to 61 customer requests for service (17 were NSD problem) and closed out 311 mark and locate request tickets.
- The preventative maintenance crews ran work orders on 104 laterals, cleaned approximately 61,887.6 feet of main line and CCTV inspected 18 laterals. In addition, the CCTV truck televised 0 feet of mainline.

TREATMENT PLANT:

No significant events for the month of January 2020 in the Treatment Plant Department:

Plant Operations:

- For January 2020, the plant's influent flow was 271.0 MG as compared to last year flow for January 2019 of 407.2 MG
- There was 0.86" rainfall for January 2020 (Carneros Rainfall Center) as compared to 5.64" rainfall for January 2019.
- Pond 4 end of the month recorded level reading was 38.82".

Power Consumption and Production:

- January power purchased from PG&E was 383 MWH in comparison to January 2019 purchase of 353 MWH.
- Cogeneration unit ran 744 of 744 hours for the month – 100% uptime, averaging 337.83 Kw, producing 259 MWH of energy.
- Solar generation in January was 89 MWH, compared to 62 MWH in December and 75 MWH in January 2019.

Maintenance:

Significant events for the month of January 2020:

Process Maintenance

- Cogeneration unit monthly emission test - in compliance with BAAQMD permit
- Flare/replaced thermocouple #2
- Flare/replaced flame arrestor
- Replaced lower RTD for flare
- Replaced linkage on micro switch for DAFT air float tank
- Belt Filter Press #2/replaced #2 horizontal hydraulic cylinder for pressure belt

Projects

- Replaced OIS station in Blower building
- Replaced #2 and #3 water piping in Filter Support
- Headworks doors/installed louvers

Standby Power

- Plant generators operational testing only
- Riverpark, Stonecrest, West Napa operational testing only

Influent Pumps

- All pumps operational

Laboratory:

Effluent (EFF-001) Summary

There were no violations of Effluent limits during the month of January 2020. All parameters were monitored at the required frequencies. The following were notable sampling events:

- January 7, 2020: Mercury, Metals, Cyanide, Nutrients
- January 7-11, 2020: Acute Toxicity Bioassay
- January 17, 20, 27, 2020: Cyanide
- January 14, 2020: Nutrients

Influent (INF-001) Summary

Monthly Influent monitoring of all parameters occurred at the required frequencies. The following were notable sampling events:

- January 7, 2020: Metals, Mercury, Cyanide

RECYCLING:

Significant events in the Recycling Department for January 2020 include:

- Recycled water delivered for the month of January 2020 was (4.681 million gallons), as compared to January 2019 (2.248 million gallons) is higher from the previous year due to vineyard irrigation reservoir filling. Delivered recycled water volume represents the sum of all use site flow meter consumption values.
- Sheehy Creek Restoration continued with cooperation from RCD and fifty American Canyon school students.
- Staff continued encapsulating biosolids at the Jameson Reuse site.

POLLUTION PREVENTION:

Significant events in the Pollution Prevention and Outreach Division January 2020 include:

- There were 3 tours of the treatment plant given in January. One tour was given to a group from an energy company in Chicago and two tours were given to AP Environmental Science students from Napa High. After the tour, the Napa High students participated in some laboratory analyses to see what it is like to work in a wastewater laboratory. One presentation was given in January during the American Canyon High field day at Sheehy Creek. On the field day, the students learned what NapaSan does, how the Jameson Ranch property is used, and planted oak acorns on the banks of the creek.
- The total amount of unneeded medications collected since the drug takeback program began in September 2010 is 22,118.2 pounds.
- There were no ESME Washer Rebates issued this month.
- Staff took part in the 2-day Crisis Communications Training offered by Napa County at the end of January.

ENGINEERING / CAPITAL PROJECTS / DEVELOPMENT:

Significant events occurring in the Engineering Division for January 2020 include:

- Consultant continued work on the SCADA Master Plan.
- Consultants and staff continued work on the CMMS implementation.
- Staff held a public bid opening for the Pond 1 Dredge Project.
- Contractor continued construction of the Headworks Equipment Replacement Project.
- Contractor continued construction of the Southeast Napa Sewer and Roadway Rehabilitation Project.
- Staff issued notice-to-proceed to the contractor for the 2020 Collection System Rehabilitation Project.

- Consultant continued design of the 66-inch Trunk Sewer Rehabilitation Project.
- Contractor continued construction of the 2019 Manhole Rehabilitation Project.
- Contractor completed construction of the Sanitary Sewer Manhole Adjustment Project, Phase IX.
- Consultant continued work on the SWRF Buried Metallic Piping Condition Assessment Project.
- Consultant continued work on the SWRF 12kV Condition Assessment Project.
- Contractor continued construction of the 2019 Treatment Plant Improvements Project.
- Consultant continued working on the Collection System Master Plan.
- Staff reviewed 44 sets of development plans and deemed 27 sets of plans complete. The approved plans consisted of 7 tenant improvements, 19 residential dwellings, and 1 recycled water lateral.

Budget Status & Cash Summary - July 1, 2019 - January 31, 2020 (58.3% of the year)

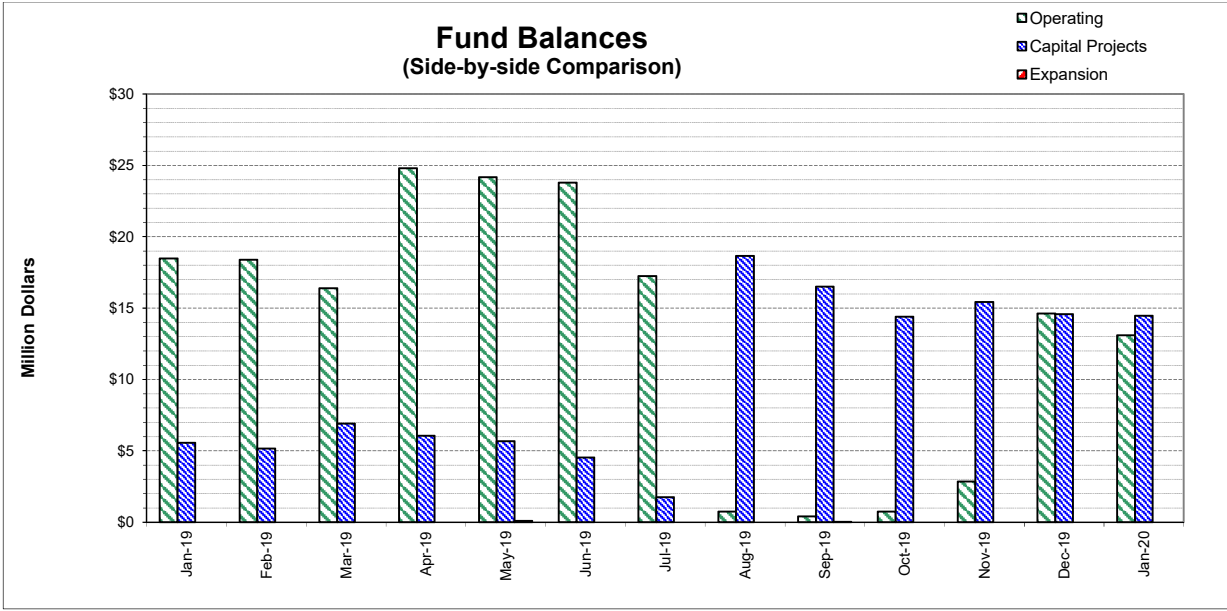
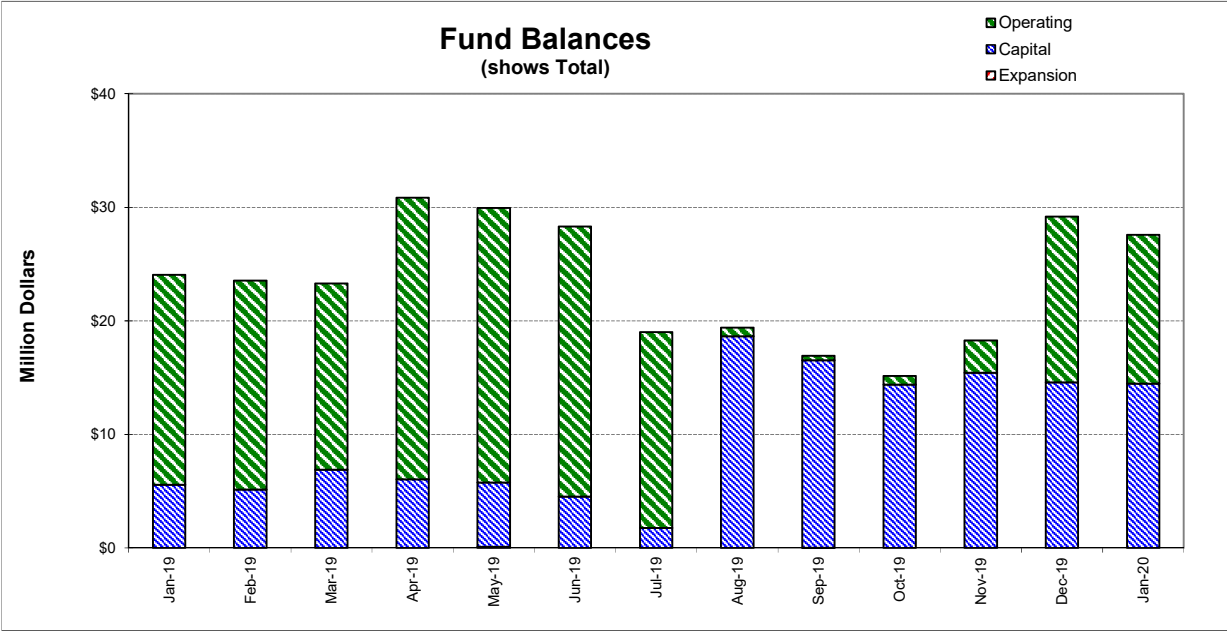
| <i>Expenditures</i> | FY 19/20 Budget | Encumbrances | Expenditures to date | Committed to date | Remaining Balance | Percent Committed |
|---|---------------------|--------------------|-------------------------|----------------------------|-------------------------|----------------------|
| Operating | | | | | | |
| Salaries & Benefits | \$10,258,600 | \$1,880 | \$5,501,470 | \$5,503,350 | \$4,755,250 | 53.6% |
| Services & Supplies | 6,281,650 | 1,080,709 | 2,905,258 | 3,985,967 | 2,295,683 | 63.5% |
| Taxes | 41,800 | - | 15,271 | 15,271 | 26,529 | 36.5% |
| Debt Service | 4,593,900 | - | 4,498,722 | 4,498,722 | 95,179 (1) | 97.9% |
| Intrafund Transfers | 8,900,000 | - | - | - | 8,900,000 | 0.0% |
| Total Operating: | \$30,075,950 | \$1,082,589 | \$12,920,720 | \$14,003,309 | \$16,072,641 (2) | 46.6% |
| Capital | | | | | | |
| Bldgs/Improvements & Equip | \$39,047,000 | \$4,175,081 | \$6,596,733 | \$10,771,813 | \$28,275,187 (3) | 27.6% |
| Intrafund Transfers | 5,178,000 | - | 3,107,324 | 3,107,324 | 2,070,676 | 60.0% |
| Total Capital : | \$44,225,000 | \$4,175,081 | \$9,704,057 | \$13,879,137 | \$30,345,863 | 31.4% |
| Grand Total Expenditures: | \$74,300,950 | \$5,257,670 | \$22,624,777 | \$27,882,446 | \$46,418,504 | 37.5% |
| <i>Revenues</i> | FY 19/20 Budget | Encumbrances | Revenues to date | Revenues posted to date | Unposted Revenue | Percent Posted |
| Operating | | | | | | |
| Use of Money/Property | \$578,000 | | \$822,700 | \$822,700 | (\$244,700) (4) | 142.3% |
| Charges for Services | 31,213,500 | | 18,157,590 | 18,157,590 | 13,055,910 | 58.2% |
| Miscellaneous Revenues | 60,000 | | 30,756 | 30,756 | 29,244 | 51.3% |
| Donations/Contributions (Capital Labor) | - | | 478,196 | 478,196 | (478,196) (5) | N/A |
| Total Operating: | \$31,851,500 | | \$19,489,241 | \$19,489,241 | \$12,362,259 | 61.2% |
| Capital | | | | | | |
| Use of Money/Property | \$0 | | \$3,553 | \$3,553 | (\$3,553) | N/A |
| Capacity Charges | 5,178,000 | | 2,941,514 | 2,941,514 | 2,236,486 | 56.8% |
| Bond/Loan Proceeds | 15,416,600 | | - | - | 15,416,600 (6) | 0.0% |
| Sale of Assets | 25,000 | | 5,244 | 5,244 | 19,756 | 21.0% |
| Miscellaneous Revenues | 5,000 | | - | - | 5,000 | 0.0% |
| Intrafund Transfers | 14,078,000 | | 3,107,324 | 3,107,324 | 10,970,676 | 22.1% |
| Total Capital: | \$34,702,600 | | \$6,338,996 | \$6,338,996 | \$28,363,604 | 18.3% |
| Grand Total Revenue: | \$66,554,100 | | \$25,828,237 | \$25,828,237 | \$40,725,863 | 38.8% |

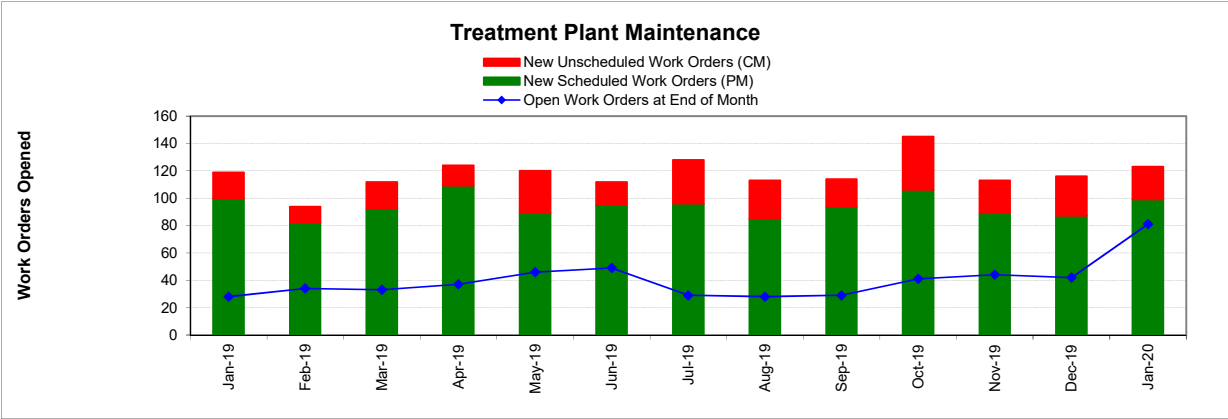
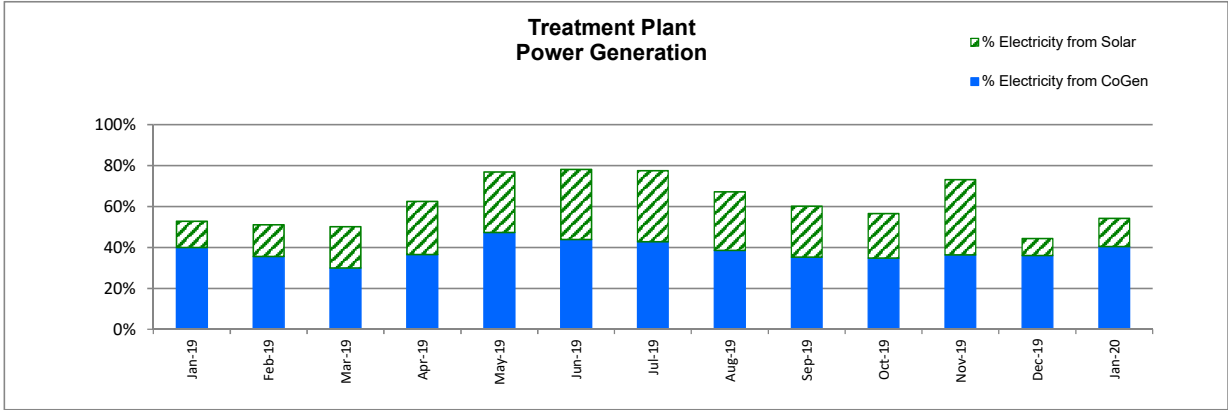
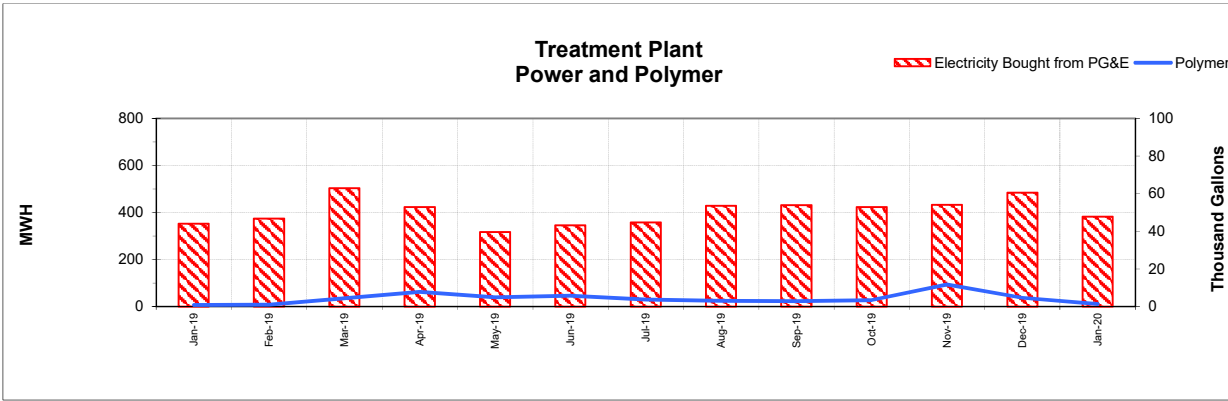
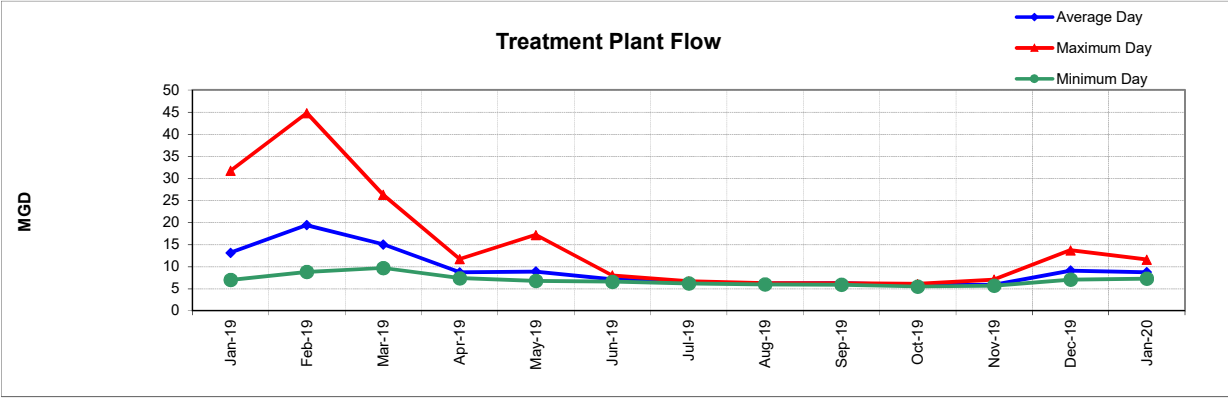
Cash on Hand as of 1/31/20 **\$27,583,516**

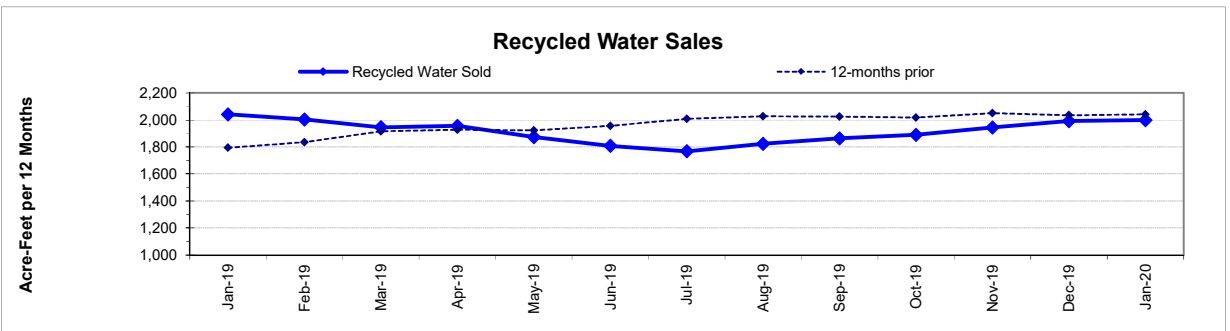
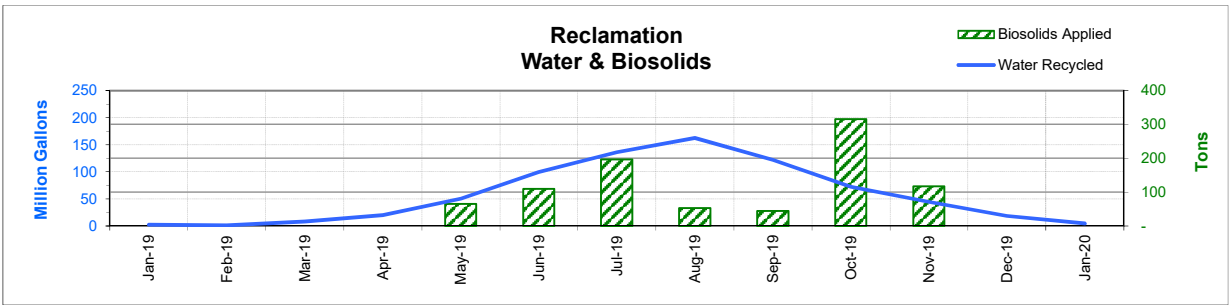
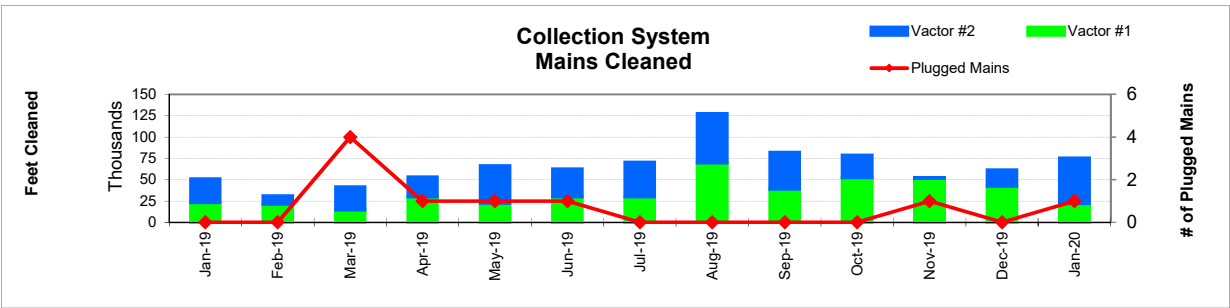
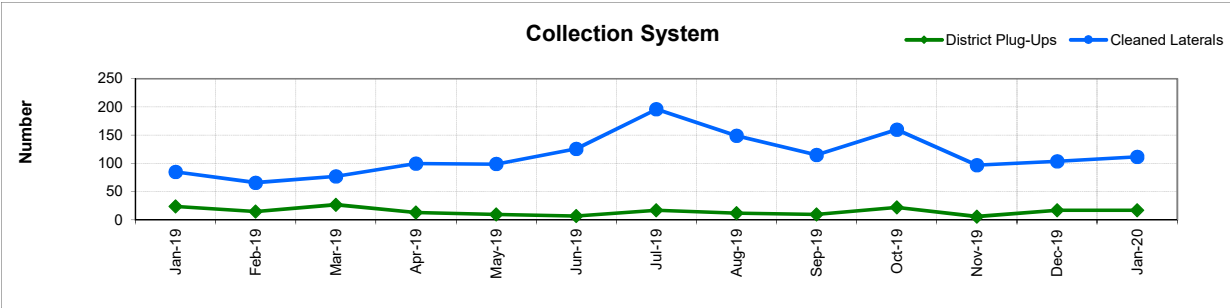
**excluding Debt Service restricted funds

1/31/20 -Effective Rate of Return = 2.09%

1. Series 2012A's and 2017's principal/interest payments are made in Jul & Jan
2. Includes Debt Service and Intrafund Transfers; otherwise is 57.3%
3. See Capital Project Status report for details
4. More interest was earned on a higher than expected cash balance
5. In-house Labor for Capital Projects (Contra acct for Salaries)
6. Expect to receive some proceeds of SRF Loan for BVT and WNPS Projects at the end of fy.







FUND BALANCES - MONTHLY

| CATEGORY | Jan-19 | Feb-19 | Mar-19 | Apr-19 | May-19 | Jun-19 | Jul-19 | Aug-19 | Sep-19 | Oct-19 | Nov-19 | Dec-19 | Jan-20 |
|----------------------------------|---------------|---------------|---------------|---------------|---------------|---------------|---------------|---------------|---------------|---------------|---------------|---------------|---------------|
| <i>(Thousand Dollars)</i> | | | | | | | | | | | | | |
| 7800 | 18,473 | 18,394 | 16,405 | 24,793 | 24,164 | 23,784 | 17,246 | 748 | 415 | 753 | 2,858 | 14,616 | 13,107 |
| 7850 | - | - | - | - | - | - | - | - | - | - | - | - | - |
| Subtotal Operating | 18,473 | 18,394 | 16,405 | 24,793 | 24,164 | 23,784 | 17,246 | 748 | 415 | 753 | 2,858 | 14,616 | 13,107 |
| Capital Improvement Projects | 5,567 | 5153 | 6,899 | 6,058 | 5,671 | 4,525 | 1,764 | 18,655 | 16,516 | 14,400 | 15,430 | 14,579 | 14,477 |
| Debt Proceeds | - | - | - | - | - | - | - | - | - | - | - | - | - |
| Subtotal Capital | 5,567 | 5,153 | 6,899 | 6,058 | 5,671 | 4,525 | 1,764 | 18,655 | 16,516 | 14,400 | 15,430 | 14,579 | 14,477 |
| Total Discretionary Funds | 24,040 | 23,547 | 23,304 | 30,851 | 29,835 | 28,309 | 19,010 | 19,403 | 16,931 | 15,153 | 18,288 | 29,195 | 27,584 |
| Expansion Fund (Restricted) | - | - | - | - | 93 | - | - | - | 2 | - | - | - | - |
| Total Restricted Funds | - | - | - | - | 93 | - | - | - | 2 | - | - | - | - |
| TOTAL ALL FUNDS | 24,040 | 23,547 | 23,304 | 30,851 | 29,928 | 28,309 | 19,010 | 19,403 | 16,933 | 15,153 | 18,288 | 29,195 | 27,584 |

DEVELOPMENT WORKLOAD - MONTHLY

| CATEGORY | Jan-19 | Feb-19 | Mar-19 | Apr-19 | May-19 | Jun-19 | Jul-19 | Aug-19 | Sep-19 | Oct-19 | Nov-19 | Dec-19 | Jan-20 |
|--|-----------|-----------|-----------|-----------|------------|-----------|-----------|-----------|-----------|-----------|------------|-----------|-----------|
| <u>Phone Requests</u> | | | | | | | | | | | | | |
| Maps/Drawings | 6 | 2 | 4 | - | 17 | 8 | 1 | - | 4 | - | 11 | 4 | 6 |
| Lateral Permits | - | - | - | - | - | - | - | - | - | - | - | - | - |
| Policy Questions | 8 | 7 | 5 | 5 | 10 | 6 | 8 | 1 | 4 | 2 | 2 | - | 2 |
| Development Questions | 40 | 35 | 48 | 53 | 79 | 64 | 43 | 29 | 38 | 32 | 40 | 29 | 32 |
| Miscellaneous | 27 | 18 | 25 | 29 | 29 | 18 | 25 | 16 | 18 | 29 | 13 | 24 | 10 |
| TOTAL | 81 | 62 | 82 | 87 | 135 | 96 | 77 | 46 | 64 | 63 | 66 | 57 | 50 |
| <u>Counter Requests</u> | | | | | | | | | | | | | |
| Maps/Drawings | - | - | - | 1 | - | - | 1 | - | - | 1 | - | - | 0 |
| Lateral Permits | 12 | 8 | 11 | 7 | 11 | 7 | 8 | 12 | 13 | 7 | 7 | 8 | 5 |
| Policy Questions | - | - | 3 | 4 | - | - | - | - | - | - | 1 | - | 0 |
| Development Questions | 10 | 9 | 13 | 10 | 7 | 10 | 3 | 4 | 13 | 4 | 7 | 7 | 4 |
| Miscellaneous | 1 | - | - | 0 | 2 | 0 | 0 | 1 | 0 | - | - | - | 1 |
| TOTAL | 23 | 17 | 27 | 22 | 20 | 17 | 12 | 17 | 26 | 12 | 15 | 15 | 10 |
| <u>Initial Request (Referrals)</u> | 18 | 14 | 16 | 24 | 20 | 9 | 14 | 16 | 13 | 13 | 11 | 9 | 9 |
| <u>Connection Permits Issued</u> | | | | | | | | | | | | | |
| Residential Permits | - | 4 | 5 | 2 | 6 | 3 | 2 | 14 | 2 | 5 | 3 | 0 | 9 |
| Commercial Permits | 1 | - | 1 | 2 | 3 | 1 | 6 | 1 | 2 | 1 | 3 | 1 | 1 |
| Industrial Permits | - | - | - | - | - | - | - | - | - | - | - | - | - |
| TOTAL PERMITS | 1 | 4 | 6 | 4 | 9 | 4 | 8 | 15 | 4 | 6 | 6 | 1 | 10 |
| Residential Units | - | 4 | 36 | 2 | 6 | 3 | 6 | 14 | 2 | 22 | 5 | 0 | 11 |
| Commercial Units | 1 | - | 1 | 2 | 3 | 1 | 2 | 1 | 2 | 1 | 133 | 1 | 1 |
| TOTAL UNITS | 1 | 4 | 37 | 4 | 9 | 4 | 8 | 15 | 4 | 23 | 138 | 1 | 12 |
| <u>Annexations</u> | | | | | | | | | | | | | |
| Submitted | 1 | - | - | - | 1 | - | 1 | - | - | 1 | - | - | - |
| Acreage | 4.90 | - | - | - | 0.50 | - | 16.04 | - | - | 44.84 | - | - | - |
| <u>Plans Reviewed</u> | | | | | | | | | | | | | |
| <u>Subdivisions/Sites</u> | | | | | | | | | | | | | |
| First Submittal | 2 | 5 | 6 | 5 | 14 | 8 | 7 | 8 | 8 | 5 | 8 | 24 | 12 |
| Second Submittal | 7 | 5 | 6 | 3 | 8 | 6 | 5 | 5 | 2 | 2 | 6 | 6 | 12 |
| Third Submittal | 1 | 5 | 3 | 4 | 10 | 5 | 5 | 1 | 3 | 7 | 3 | 6 | 4 |
| <u>Building/Tenant Improvements</u> | | | | | | | | | | | | | |
| First Submittal | 5 | 8 | 7 | 15 | 3 | 9 | 12 | 6 | 6 | 13 | 4 | 3 | 12 |
| Second Submittal | 4 | 2 | 5 | 2 | 3 | 4 | 4 | 1 | 4 | 5 | 1 | 4 | 3 |
| Third Submittal | 1 | 2 | 3 | 7 | - | 7 | 6 | 4 | 3 | 7 | 5 | 3 | 1 |
| <u>Miscellaneous Plan Reviews</u> | - | - | - | - | - | - | - | - | - | - | - | - | - |
| TOTAL PLANS REVIEWED | 20 | 27 | 30 | 36 | 38 | 39 | 39 | 25 | 26 | 39 | 27 | 46 | 44 |

INSPECTION WORKLOAD - MONTHLY

| CATEGORY | Jan-19 | Feb-19 | Mar-19 | Apr-19 | May-19 | Jun-19 | Jul-19 | Aug-19 | Sep-19 | Oct-19 | Nov-19 | Dec-19 | Jan-20 |
|--------------------------------|------------|------------|-----------|-----------|-----------|-----------|------------|-----------|------------|-----------|-----------|-----------|-----------|
| <u>CONSTRUCTION</u> | | | | | | | | | | | | | |
| Locating Sewers | 4 | - | - | - | - | - | - | - | - | - | - | - | - |
| Permit Processing | - | - | - | - | - | - | - | - | - | - | - | - | - |
| Preconstruction Meetings | - | - | 3 | 5 | 7 | 2 | 5 | 11 | 4 | 6 | 1 | 2 | 4 |
| Inspections - Mains | - | 1 | 1 | - | - | 1 | 5 | 1 | 11 | - | 1 | - | - |
| Inspections - Manholes | 49 | 75 | 19 | 18 | 6 | 7 | 13 | 12 | 77 | 1 | 6 | 3 | 9 |
| Inspections - Laterals | 18 | 23 | 31 | 21 | 8 | 27 | 40 | 15 | 5 | 12 | 22 | 10 | 15 |
| Inspections - Cleanouts | 31 | 39 | 39 | 46 | 43 | 24 | 59 | 43 | 7 | 54 | 33 | 44 | 26 |
| Inspections - Review Video | - | 2 | 2 | 1 | 1 | 1 | - | - | 2 | - | 1 | - | 1 |
| Demo - Septic Tanks | - | - | - | - | - | - | - | - | - | - | - | - | - |
| Demo - Buildings | - | 2 | - | - | - | - | - | - | - | - | - | - | - |
| Update Record Drawings | - | - | - | - | - | - | - | - | - | - | - | - | - |
| TOTAL | 102 | 142 | 95 | 91 | 65 | 62 | 122 | 82 | 106 | 73 | 64 | 59 | 55 |
| <u>MISCELLANEOUS</u> | | | | | | | | | | | | | |
| Meter Readings | 26 | 4 | - | 4 | 14 | - | - | - | - | - | - | - | 59 |
| Washdown Facility Inspections | - | - | - | - | - | - | - | - | - | - | - | - | - |
| General Customer Assistance | 34 | 41 | 13 | 20 | 16 | - | - | 32 | 31 | 12 | 12 | - | 6 |
| City of Napa Water Discharge | - | - | - | - | - | - | - | - | - | - | - | - | - |
| TOTAL | 60 | 45 | 13 | 24 | 30 | - | - | 32 | 31 | 12 | 12 | - | 65 |
| <u>SPECIAL PROJECTS</u> | | | | | | | | | | | | | |
| | 7 | 7 | 21 | 20 | 21 | 40 | 25 | 22 | 35 | 23 | 19 | 30 | 10 |

POLLUTION PREVENTION WORKLOAD - MONTHLY

| CATEGORY | Jan-19 | Feb-19 | Mar-19 | Apr-19 | May-19 | Jun-19 | Jul-19 | Aug-19 | Sep-19 | Oct-19 | Nov-19 | Dec-19 | Jan-20 |
|--------------------------------------|--------|--------|--------|--------|--------|--------|--------|--------|--------|--------|--------|--------|--------|
| <u>Outreach Activities</u> | | | | | | | | | | | | | |
| Plant Tours Conducted | 2 | 6 | 1 | 10 | 1 | 6 | 1 | 0 | 0 | 2 | 5 | 0 | 3 |
| Presentations Made | 1 | 0 | 2 | 3 | 1 | 2 | 0 | 0 | 0 | 5 | 7 | 0 | 1 |
| Total Outreach Activities | 3 | 6 | 3 | 13 | 2 | 8 | 1 | - | - | 7 | 12 | - | 4 |
| <u>Inspections Conducted</u> | | | | | | | | | | | | | |
| Food Service Facilities | 22 | 41 | 26 | 47 | 21 | - | - | 1 | - | - | - | 1 | 1 |
| Auto Body & Car Wash | - | - | - | - | - | - | - | - | - | - | - | - | - |
| Other | - | - | - | - | - | - | - | - | - | - | - | - | - |
| Total Inspections | 22 | 41 | 26 | 47 | 21 | - | - | 1 | - | - | - | 1 | 1 |
| <u>Compliance Issues</u> | | | | | | | | | | | | | |
| NOVs Issued | 1 | 1 | 1 | 1 | 2 | 1 | - | 1 | 1 | 1 | 3 | - | 2 |
| NOEs Issued | - | 1 | - | - | - | - | - | - | - | - | 1 | - | 2 |
| Non-Compliant-FOG | 1 | - | - | - | - | - | - | - | - | - | - | - | - |
| Total Compliance Issues | 2 | 2 | 1 | 1 | 2 | 1 | - | 1 | 1 | 1 | 4 | - | 4 |
| <u>Pollution Prevention</u> | | | | | | | | | | | | | |
| Clothes Washer Rebates | 6 | 8 | - | 19 | - | 2 | - | - | - | - | - | - | - |
| Toilet Retrofit Rebates | - | - | - | - | - | - | - | - | - | - | - | - | - |
| Pharmaceuticals Diverted (in lbs) | 124 | - | 102 | - | 45 | 73 | 132 | - | - | 77 | - | 44 | - |

RECYCLED WATER DELIVERIES - MONTHLY

| | Acres | Jan-19 | Feb-19 | Mar-19 | Apr-19 | May-19 | Jun-19 | Jul-19 | Aug-19 | Sep-19 | Oct-19 | Nov-19 | Dec-19 | Jan-20 |
|----------------------------|----------------|--------------|--------------|--------------|---------------|---------------|---------------|----------------|----------------|----------------|---------------|---------------|---------------|--------------|
| MONTHLY (MG) | | | | | | | | | | | | | | |
| <u>Water Sold</u> | | | | | | | | | | | | | | |
| Golf Courses | 638.0 | 0.002 | - | 0.014 | 9.555 | 25.976 | 58.629 | 69.590 | 65.339 | 49.784 | 31.724 | 16.340 | 0.007 | 0.001 |
| Cemeteries | 57.1 | 0.380 | - | 0.273 | 1.494 | 3.671 | 3.658 | 5.515 | 5.659 | 4.822 | 4.061 | 3.028 | 0.250 | 0.222 |
| Parks | 18.5 | 0.002 | - | - | 0.020 | 0.263 | 0.843 | 0.939 | 1.219 | 1.111 | 0.615 | 0.028 | - | - |
| Schools | 12.6 | 0.098 | 0.043 | 0.041 | 0.251 | 0.988 | 1.655 | 2.196 | 1.712 | 1.635 | 1.312 | 0.792 | 0.085 | 0.044 |
| Commerical | 166.5 | 1.379 | 0.557 | 0.648 | 4.974 | 10.516 | 12.142 | 18.578 | 17.787 | 15.775 | 13.443 | 11.762 | 2.254 | 0.986 |
| Vineyards | 3,442.0 | 0.380 | 0.513 | 7.149 | 3.250 | 6.107 | 10.475 | 20.951 | 42.981 | 27.367 | 13.852 | 7.027 | 15.494 | 3.170 |
| Trucked Water | 175.0 | 0.007 | 0.020 | 0.017 | 0.110 | 0.421 | 0.533 | 1.293 | 1.374 | 1.425 | 1.401 | 1.097 | 0.476 | 0.227 |
| Subtotal Sales | 4,509.6 | 2.248 | 1.133 | 8.142 | 19.654 | 47.943 | 87.935 | 119.063 | 136.071 | 101.920 | 66.409 | 40.073 | 18.567 | 4.650 |
| <u>District Use</u> | | | | | | | | | | | | | | |
| Jameson | 330.0 | - | - | - | - | - | - | - | 0.470 | - | - | - | - | 0.024 |
| Somky | 213.0 | - | - | - | - | 2.504 | 11.985 | 17.012 | 25.944 | 20.394 | 6.391 | 4.513 | - | 0.006 |
| Fagundes/Airport | 50.5 | - | - | - | - | - | - | - | - | - | - | - | - | - |
| Subtotal District | 593.5 | - | - | - | - | 2.504 | 11.985 | 17.012 | 26.413 | 20.394 | 6.391 | 4.513 | - | 0.030 |
| TOTAL DELIVERED | 5,103.1 | 2.248 | 1.133 | 8.142 | 19.654 | 50.447 | 99.920 | 136.074 | 162.484 | 122.314 | 72.800 | 44.586 | 18.567 | 4.681 |
| ANNUAL (AF) | | | | | | | | | | | | | | |
| <u>Water Sold</u> | | | | | | | | | | | | | | |
| Golf Courses | 638.0 | 1,000 | 981 | 972 | 991 | 909 | 880 | 897 | 921 | 939 | 963 | 1,003 | 1,003 | 1,003 |
| Cemeteries | 57.1 | 88 | 88 | 88 | 91 | 93 | 93 | 95 | 97 | 99 | 102 | 102 | 101 | 100 |
| Parks | 18.5 | 15 | 15 | 15 | 15 | 13 | 13 | 13 | 14 | 16 | 17 | 15 | 15 | 15 |
| Schools | 12.6 | 38 | 38 | 37 | 37 | 35 | 33 | 34 | 33 | 33 | 33 | 33 | 33 | 33 |
| Commerical | 166.5 | 343 | 339 | 335 | 341 | 343 | 342 | 350 | 346 | 342 | 323 | 336 | 337 | 336 |
| Vineyards | 3,442.0 | 546 | 531 | 485 | 470 | 470 | 436 | 367 | 399 | 418 | 431 | 431 | 477 | 486 |
| Trucked Water | 175.0 | 13 | 13 | 13 | 11 | 11 | 11 | 13 | 15 | 18 | 22 | 24 | 25 | 26 |
| Subtotal Sales | 4,509.6 | 2,042 | 2,003 | 1,945 | 1,956 | 1,874 | 1,808 | 1,768 | 1,824 | 1,864 | 1,891 | 1,944 | 1,992 | 2,000 |
| <u>District Use</u> | | | | | | | | | | | | | | |
| Jameson | 330.0 | 15 | 15 | 15 | 15 | 15 | 15 | 15 | 16 | 1 | 1 | 1 | 1 | 2 |
| Somky | 213.0 | 171 | 171 | 171 | 171 | 143 | 139 | 191 | 261 | 276 | 259 | 272 | 272 | 272 |
| Fagundes/Airport | 50.5 | - | - | - | - | - | - | - | - | - | - | - | - | - |
| Subtotal District | 593.5 | 187 | 187 | 187 | 187 | 158 | 154 | 206 | 277 | 277 | 260 | 274 | 274 | 274 |
| TOTAL DELIVERED | 5,103.1 | 2,229 | 2,189 | 2,132 | 2,143 | 2,032 | 1,962 | 1,974 | 2,101 | 2,141 | 2,151 | 2,218 | 2,266 | 2,273 |

BIOSOLIDS HANDLING - MONTHLY

| Site | Jan-19 | Feb-19 | Mar-19 | Apr-19 | May-19 | Jun-19 | Jul-19 | Aug-19 | Sep-19 | Oct-19 | Nov-19 | Dec-19 | Jan-20 |
|-----------------------------------|--------|--------|--------|--------|-----------|------------|------------|-----------|-----------|------------|------------|--------|--------|
| <u>Land Applied by NSD</u> | | | | | | | | | | | | | |
| Somky | | | | | 65 | 109 | | | | | | | |
| Fagundes | | | | | | | | | 44 | | | | |
| Jameson Canyon | - | - | - | - | - | - | 197 | 52 | | 316 | 117 | - | - |
| Subtotal by NSD | - | - | - | - | 65 | 109 | 197 | 52 | 44 | 316 | 117 | - | - |
| <u>Land Applied by Contractor</u> | | | | | | | | | | | | | |
| Somky | | | | | | | | | | | | | |
| Fagundes | | | | | | | | | | | | | |
| Jameson Canyon | | | | | | | | | | | | | |
| Subtotal by Contractor | - | - | - | - | - | - | - | - | - | - | - | - | - |
| Total Land Applied | - | - | - | - | 65 | 109 | 197 | 52 | 44 | 316 | 117 | - | - |
| Off Site (Contractor) | | | | | | | | | | | | | |
| Total (tons) | - | - | - | - | 65 | 109 | 197 | 52 | 44 | 316 | 117 | - | - |

COLLECTION SYSTEM MAINTENANCE - MONTHLY

| CATEGORY | Jan-19 | Feb-19 | Mar-19 | Apr-19 | May-19 | Jun-19 | Jul-19 | Aug-19 | Sep-19 | Oct-19 | Nov-19 | Dec-19 | Jan-20 |
|---------------------------------|---------------|---------------|---------------|---------------|---------------|---------------|---------------|----------------|---------------|---------------|---------------|---------------|---------------|
| Plugups | | | | | | | | | | | | | |
| Total Calls | 70 | 43 | 46 | 43 | 46 | 40 | 45 | 46 | 45 | 68 | 38 | 60 | 68 |
| Business Hours | 47 | 39 | 21 | 23 | 28 | 31 | 33 | 30 | 36 | 51 | 28 | 37 | 42 |
| After Hours | 23 | 4 | 25 | 20 | 18 | 9 | 12 | 16 | 9 | 17 | 10 | 23 | 22 |
| District's | 24 | 15 | 27 | 13 | 10 | 7 | 17 | 12 | 10 | 22 | 6 | 17 | 17 |
| Property Owner's | 46 | 28 | 20 | 30 | 35 | 32 | 26 | 34 | 32 | 43 | 32 | 42 | 46 |
| Plugged Main Lines | - | - | 4 | 1 | 1 | 1 | - | - | - | - | 1 | - | 1 |
| Run Lateral w/Eel | 85 | 66 | 77 | 100 | 99 | 126 | 196 | 149 | 115 | 160 | 97 | 104 | 112 |
| Cleaning (feet of sewer) | | | | | | | | | | | | | |
| Vactor #1 | 23,544 | 21,454 | 14,808 | 30,224 | 22,498 | 30,232 | 30,283 | 69,780 | 38,969 | 52,711 | 51,764 | 42,519 | 22,372 |
| Vactor #2 | 27,335 | 9,420 | 26,687 | 22,691 | 43,466 | 32,180 | 39,800 | 57,405 | 43,059 | 25,762 | 610 | 18,811 | 52,620 |
| Hydro | | | | | | | | | | | | | |
| Rodder | | | | | | | | | | | | 558 | - |
| Total (feet) | 50,879 | 30,875 | 41,495 | 52,916 | 65,964 | 62,412 | 70,083 | 127,185 | 82,028 | 78,473 | 52,374 | 61,888 | 74,993 |
| Cleaning Days | | | | | | | | | | | | | |
| Vactor #1 | 13 | 10 | 6 | 13 | 10 | 12 | 12 | 18 | 18 | 20 | 18 | 17 | 10 |
| Vactor #2 | 7 | 6 | 15 | 8 | 19 | 15 | 16 | 21 | 15 | 8 | 1 | 10 | 16 |
| Hydro | | | | | | | | | | | | | |
| Rodder | | | | | | | | | | | | 2 | |
| Feet/day | 2,550 | 1,950 | 2,000 | 2,500 | 2,250 | 2,300 | 2,500 | 3,250 | 2,500 | 2,800 | 2,750 | 2,150 | 2,900 |
| Vactor #1 | 1,800 | 2,150 | 2,450 | 2,300 | 2,250 | 2,500 | 2,500 | 3,900 | 2,150 | 2,650 | 2,900 | 2,500 | 2,250 |
| Vactor #2 | 3,900 | 1,550 | 1,800 | 2,850 | 2,300 | 2,150 | 2,500 | 2,750 | 2,850 | 3,200 | 600 | 1,900 | 3,300 |
| Hydro | | | | | | | | | | | | | |
| Rodder | | | | | | | | | | | | 300 | |
| Video Inspections | | | | | | | | | | | | | |
| Mains (feet) | 14,335 | 5,812 | 13,050 | 15,089 | 24,716 | 23,914 | 32,551 | 40,819 | 22,837 | 17,404 | 10,825 | - | 13,832 |
| Laterals (each) | 175 | 133 | 144 | 204 | 173 | 177 | 254 | 214 | 190 | 247 | 165 | 182 | 188 |
| Construction (each) | | | | | | | | | | | | | |
| Cleanouts | 18 | 3 | 17 | 15 | 12 | 24 | 15 | 17 | 15 | 20 | 10 | 4 | 8 |
| Laterals | 6 | 3 | 3 | 4 | 13 | 12 | 14 | 16 | 16 | 10 | 9 | 10 | 10 |
| Mains | - | | 1 | | | | - | - | | - | | - | 1 |
| Manholes | - | | 1 | | | | - | 2 | | 2 | | - | |
| Other | | | | | | | | | | | | | |
| USA Markings | | | | | | | | | | | | | |
| Regular (w/in 2 days) | 171 | 224 | 338 | 327 | 338 | 292 | 378 | 363 | 331 | 332 | 224 | 290 | 271 |
| Emergency (w/in 2 hours) | 24 | 15 | 22 | 20 | 20 | 24 | 21 | 28 | 23 | 21 | 7 | 21 | 22 |

WASTEWATER PLANT OPERATIONS DATA - MONTHLY

| CATEGORY | Units | Jan-19 | Feb-19 | Mar-19 | Apr-19 | May-19 | Jun-19 | Jul-19 | Aug-19 | Sep-19 | Oct-19 | Nov-19 | Dec-19 | Jan-20 |
|--------------------------------|----------------|--------------|--------------|--------------|--------------|--------------|--------------|--------------|--------------|--------------|--------------|---------------|--------------|--------------|
| FLOWES | | 31 | 28 | 31 | 30 | 31 | 30 | 31 | 31 | 30 | 31 | 30 | 31 | 31 |
| Influent | MG | 407.2 | 542.7 | 465.3 | 261.4 | 275.4 | 213.6 | 199.3 | 192.5 | 182.1 | 181.6 | 177.6 | 281.6 | 271.0 |
| Average Day | MGD | 13.1 | 19.4 | 15.0 | 8.7 | 8.9 | 7.1 | 6.4 | 6.2 | 6.3 | 5.9 | 5.9 | 9.1 | 8.7 |
| Maximum Day | Date | 17-Jan | 14-Feb | 6-Mar | 1-Apr | 19-May | 1-Jun | 2-Jul | 29-Aug | 2-Sep | 29-Oct | 27-Nov | 7-Dec | 16-Jan |
| Maximum Day Flow | MG | 31.7 | 44.8 | 26.3 | 11.7 | 17.2 | 8.0 | 6.7 | 6.3 | 6.3 | 6.1 | 7.1 | 13.7 | 11.6 |
| Minimum Day | Date | 3-Jan | 1-Feb | 19-Mar | 30-Apr | 14-May | 27-Jun | 24-Jul | 6-Jan | 24-Sep | 10-Oct | 1-Nov | 17-Dec | 7-Jan |
| Minimum Day Flow | MG | 7.0 | 8.8 | 9.7 | 7.4 | 6.8 | 6.6 | 6.2 | 6.0 | 5.9 | 5.5 | 5.7 | 7.1 | 7.3 |
| Effluent | MG | 497.1 | 507.1 | 626.6 | 449.8 | 55.5 | 108.7 | 128.8 | 167.8 | 123.5 | 78.4 | 309.7 | 344.4 | 286.6 |
| River Discharge | MG | 491.6 | 507.1 | 618.1 | 424.4 | - | - | - | - | - | - | 265.0 | 323.2 | 271.3 |
| Recycled Flow | MG | 5.5 | - | 8.5 | 25.4 | 55.5 | 108.7 | 128.8 | 167.8 | 123.5 | 78.4 | 44.6 | 21.2 | 15.3 |
| BIOSOLIDS | Tons | 700 | 451 | 413 | 575 | 493 | 506 | 624 | 830 | 714 | 750 | 762 | 769 | 643 |
| Wet Tons Generated from Pond | Tons | | | | | | | | | | | | | |
| Wet Tons Generated from Plant | Tons | 700 | 451 | 413 | 575 | 493 | 506 | 624 | 830 | 714 | 750 | 762 | 769 | 643 |
| % Solids Liquid | % | | | | | | | | | | | | | |
| % Solids Cake | % | | | | | | | | | | | | | |
| % Solids Land Application | % | | | | | | | | | | | | | |
| Wet Tons Hauled Offsite | Tons | | | | | | | | | | | | | |
| POLYMER USE | Gallons | 868 | 1,046 | 4,557 | 7,851 | 5,053 | 5,921 | 3,745 | 3,153 | 3,038 | 3,499 | 11,780 | 4,681 | 1,363 |
| Pond Pre-Flocculators | Gallons | - | - | 2,668 | 4,704 | 288 | 224 | 494 | 326 | 257 | 540 | 6,311 | 2,114 | - |
| Flocculator Polymer 1 | Gallons | - | - | - | - | - | - | - | - | - | - | - | - | - |
| Flocculator Polymer 2 | Gallons | - | - | 974 | 755 | 79 | - | 119 | 61 | 86 | 203 | 427 | 382 | 206 |
| Filter Polymer 1 | Gallons | 178 | 404 | 460 | 1,584 | 4,100 | 5,102 | 2,499 | 1,963 | 1,832 | 1,841 | 4,401 | 1,378 | 354 |
| Filter Polymer 2 | Gallons | - | - | - | - | - | - | - | - | - | - | - | - | - |
| Belt Presses | Gallons | 690 | 642 | 455 | 808 | 586 | 595 | 633 | 803 | 863 | 915 | 641 | 807 | 803 |
| ENERGY | | | | | | | | | | | | | | |
| Total Electricity Used | MWH | 588 | 581 | 719 | 667 | 601 | 616 | 625 | 698 | 688 | 648 | 680 | 759 | 642 |
| Purchased from PGE | MWH | 353 | 374 | 504 | 423 | 317 | 346 | 358 | 429 | 431 | 423 | 433 | 485 | 383 |
| Produced from Co-Gen | MWH | 235 | 207 | 215 | 244 | 284 | 270 | 267 | 269 | 257 | 225 | 247 | 274 | 259 |
| Percent Produced | % | 40% | 36% | 30% | 37% | 47% | 44% | 43% | 39% | 35% | 35% | 36% | 36% | 40% |
| Purchased from Solar | MWH | 75 | 89 | 145 | 173 | 178 | 211 | 217 | 200 | 171 | 141 | 98 | 62 | 89 |
| Percent Produced | | 13% | 15% | 20% | 26% | 30% | 34% | 35% | 29% | 25% | 22% | 37% | 8% | 14% |
| Purchased Natural Gas | Therms | 1,953 | 1,885 | 1,974 | 1,513 | 1,431 | 1,727 | 2,028 | 1,180 | 1,222 | 1,633 | 1,800 | 2,220 | 1,795 |
| Methane Flared Off | MCF | 34 | 7 | 14 | 130 | 164 | 324 | 282 | 251 | 126 | 220 | 214 | 593 | 88 |
| Stand By Calls | # | 71 | 75 | 52 | 26 | 80 | 67 | 64 | 50 | 50 | 59 | 88 | 66 | 65 |
| Violations | # | - | - | - | - | - | - | - | - | - | - | - | - | - |

WASTEWATER PLANT MAINTENANCE and LABORATORY DATA - MONTHLY

| CATEGORY | Jan-19 | Feb-19 | Mar-19 | Apr-19 | May-19 | Jun-19 | Jul-19 | Aug-19 | Sep-19 | Oct-19 | Nov-19 | Dec-19 | Jan-20 |
|---------------------------------|--------------|--------------|--------------|--------------|--------------|--------------|--------------|--------------|--------------|--------------|--------------|--------------|--------------|
| <u>Scheduled</u> | | | | | | | | | | | | | |
| Old | 6 | 5 | 11 | 10 | 15 | 25 | 31 | 7 | 7 | 8 | 17 | 24 | 23 |
| New | 100 | 82 | 92 | 109 | 89 | 95 | 96 | 85 | 94 | 106 | 89 | 87 | 99 |
| Completed | 101 | 76 | 93 | 104 | 79 | 89 | 120 | 85 | 93 | 97 | 82 | 88 | 73 |
| New Balance | 5 | 11 | 10 | 15 | 25 | 31 | 7 | 7 | 8 | 17 | 24 | 23 | 49 |
| <u>Unscheduled</u> | | | | | | | | | | | | | |
| Old | 24 | 23 | 23 | 23 | 22 | 21 | 18 | 22 | 21 | 21 | 24 | 20 | 19 |
| New | 19 | 12 | 20 | 15 | 31 | 17 | 32 | 28 | 20 | 39 | 24 | 29 | 24 |
| Completed | 20 | 12 | 20 | 16 | 32 | 20 | 28 | 29 | 20 | 36 | 28 | 30 | 11 |
| New Balance | 23 | 23 | 23 | 22 | 21 | 18 | 22 | 21 | 21 | 24 | 20 | 19 | 32 |
| <u>Total Work Orders</u> | | | | | | | | | | | | | |
| Old | 30 | 28 | 34 | 33 | 120 | 46 | 49 | 29 | 28 | 29 | 41 | 44 | 42 |
| New | 119 | 94 | 112 | 124 | 11 | 112 | 128 | 113 | 114 | 145 | 113 | 116 | 123 |
| Completed | 120 | 88 | 112 | 120 | 46 | 109 | 150 | 113 | 113 | 133 | 110 | 116 | 84 |
| New Balance | 28 | 34 | 33 | 37 | 46 | 49 | 29 | 28 | 29 | 41 | 44 | 42 | 81 |
| <u>LAB ANALYSES</u> | | | | | | | | | | | | | |
| Sample Type | | | | | | | | | | | | | |
| Regulatory | 169 | 117 | 164 | 155 | 190 | 138 | 129 | 149 | 142 | 147 | 240 | 176 | 157 |
| Process Control | 1,155 | 1,111 | 1,199 | 1,195 | 760 | 770 | 869 | 838 | 818 | 893 | 1,010 | 1,072 | 1,208 |
| Special Request | - | 8 | 2 | - | 1 | 15 | 1 | 22 | 26 | 46 | 38 | 16 | - |
| Quality Control/Assurance | 776 | 639 | 754 | 1,447 | 812 | 539 | 632 | 600 | 607 | 774 | 957 | 839 | 923 |
| TOTAL | 2,100 | 1,875 | 2,119 | 2,797 | 1,763 | 1,462 | 1,631 | 1,609 | 1,593 | 1,860 | 2,245 | 2,103 | 2,288 |

**Summary of NSD Capital Project Status
through 01-31-20**

| Proj # | Description | FY 19/20 Budget | FY 18/19 Carryovers | Adj. | Final FY 19/20 Budget | Encumbrance | Costs Paid to Date | Budget Remaining | % Budget Expended |
|--------|---|-----------------|---------------------|---------|-----------------------|-------------|--------------------|------------------|-------------------|
| | <u>COLLECTION SYSTEM - PROJECTS</u> | | | | | | | | |
| 13701 | Main Line Sewer Rehabilitation | 60,000 | | | 60,000 | - | 4,936 | 55,064 | 8% |
| 13702 | Manhole Raising/Rehabilitation | 332,600 | | | 332,600 | 141,079 | 17,099 | 174,422 | 5% |
| 13703 | Lateral Replacement/Rehabilitation | 110,000 | | | 110,000 | - | 91,963 | 18,037 | 84% |
| 13704 | Cleanouts Installation/Rehabilitation | 107,000 | | | 107,000 | - | 28,339 | 78,661 | 26% |
| 13705 | Inflow & Infiltration (I&I) Reduction Program | 221,700 | | | 221,700 | 167,688 | 10,940 | 43,072 | 5% |
| 14703 | Browns Valley Rd & First St | 7,000,000 | | | 7,000,000 | 50,596 | 11,258 | 6,938,146 | 0% |
| 17704 | Infltrtn Rehab - SSMH/PL (CI-) | - | 25,500 | | 25,500 | - | - | 25,500 | - |
| 18701 | I&I Smoke Testing | 150,000 | | | 150,000 | 14,266 | 28,485 | 107,249 | 19% |
| 18702 | Collection System Asset Management Software | - | 443,550 | | 443,550 | 268,064 | 129,056 | 46,430 | 29% |
| 18703 | Upper Lateral Rehab - Basin L (Pilot) #3 | 166,300 | 3,200 | | 169,500 | - | 63,156 | 106,344 | 37% |
| 18706 | Sewer System Inflow/Infiltration 2019 | 3,538,100 | 313,850 | | 3,851,950 | 1,396,333 | 2,306,368 | 149,249 | 60% |
| 19701 | 66-inch Trunk Rehabilitation (Kaiser to IPS) | 4,000,000 | 450,000 | | 4,450,000 | 436,756 | 146,254 | 3,866,990 | 3% |
| 19703 | 2020 Collection System Rehabilitation | 3,169,600 | 9,800 | | 3,179,400 | - | 35,985 | 3,143,415 | 1% |
| 19727 | Collection System Master Plan | 1,071,200 | 632,350 | | 1,703,550 | 265,049 | 261,244 | 1,177,257 | 15% |
| 20701 | Upper Lateral Rehab - Pilot #5 | 5,000 | | | 5,000 | - | 50 | 4,950 | 1% |
| 20702 | Manhole Rehabilitation | 250,000 | | | 250,000 | 182,120 | 3,055 | 64,825 | 1% |
| 20703 | 2021 Collection System Rehabilitation | 20,000 | | | 20,000 | - | - | 20,000 | - |
| | | | | | | | | | |
| | <u>COLLECTION SYSTEM - EQUIPMENT</u> | | | | | | | | |
| 20704 | Locatable Mini-Camera #3 Replacement | 11,900 | | (200) | 11,700 | - | 9,382 | 2,318 | 80% |
| 20705 | Eel Replacement #2 | 5,900 | | 200 | 6,100 | - | 5,688 | 412 | 93% |
| | | | | | | | | | |
| | <u>COLLECTION SYSTEM - LIFT STATIONS</u> | | | | | | | | |
| 17711 | West Napa PS - Rehab | 5,500,000 | | | 5,500,000 | 88,048 | 196,351 | 5,215,600 | 4% |
| 19705 | Stonecrest PS Pump Rebuild | - | 40,100 | | 40,100 | 9,840 | 15,266 | 14,994 | 38% |
| | | | | | | | | | |
| | <u>TREATMENT - PROJECTS</u> | | | | | | | | |
| 13745 | Pond 1 Dredge | 2,100,000 | 237,150 | | 2,337,150 | 5,085 | 46,048 | 2,286,017 | 2% |
| 18736 | Treatment Plant Project 2018 | - | 15,000 | | 15,000 | 10,901 | 139 | 3,961 | 1% |
| 18740 | Treatment Plant Project 2019 | 600,000 | 672,700 | | 1,272,700 | 115,061 | 1,126,869 | 30,770 | 89% |
| 19717 | WWTP MP - Pond Transfer Structures 2 to 3 | - | 259,700 | | 259,700 | - | 12,800 | 246,900 | 5% |
| 20706 | WWTP Master Plan | 5,000 | | | 5,000 | - | - | 5,000 | - |
| 20707 | Pond Levee Repair | 100,000 | | | 100,000 | - | 346 | 99,654 | 0% |
| 20708 | 2020 Treatment Plant Improvements Project | 1,500,000 | | | 1,500,000 | 78,020 | 23,146 | 1,398,833 | 2% |
| 20724 | River Park PS FM Replacement | | | 100,000 | 100,000 | - | 23,499 | 76,501 | 23% |

**Summary of NSD Capital Project Status
through 01-31-20**

| Proj # | Description | FY 19/20 Budget | FY 18/19 Carryovers | Adj. | Final FY 19/20 Budget | Encumbrance | Costs Paid to Date | Budget Remaining | % Budget Expended |
|--------|---|-----------------|---------------------|----------|-----------------------|-------------|--------------------|------------------|-------------------|
| | <u>TREATMENT - EQUIPMENT</u> | | | | | | | | |
| 13735 | Dual Fuel Boiler Burner | - | 121,550 | | 121,550 | 32,908 | 65,815 | 22,828 | 54% |
| 15707 | Main - DAFT Overflow Pumps (2) Cornell | 11,900 | | | 11,900 | - | - | 11,900 | - |
| 15711 | Rotork Actuator Replacement | - | 7,600 | | 7,600 | - | - | 7,600 | - |
| 16712 | Main - Primary Clarifier Mech/Struct Rehabilitation | 814,000 | 152,300 | | 966,300 | 381,262 | 53,924 | 531,114 | 6% |
| 17715 | Turbidimeters (7) Tertiary Rplcmnts | - | 16,000 | | 16,000 | - | - | 16,000 | - |
| 17726 | Headworks Equipment Rehab/Replacment | 1,000,000 | 667,600 | | 1,667,600 | 295,037 | 1,268,893 | 103,670 | 76% |
| 18711 | 3W Strainer | - | 24,350 | | 24,350 | - | - | 24,350 | - |
| 18715 | Muffle Furnace - Replacement | - | 5,000 | | 5,000 | - | 4,321 | 679 | 86% |
| 18716 | Rotork Actuator Replacement | - | 6,400 | | 6,400 | - | - | 6,400 | - |
| 18719 | Filter Flow Control - Rotork Valves | - | 9,900 | | 9,900 | - | - | 9,900 | - |
| 18720 | Neuros Blowers Rebuild | - | 64,300 | | 64,300 | - | - | 64,300 | - |
| 18722 | FOG Station Water Heater | 20,000 | 5,000 | | 25,000 | - | - | 25,000 | - |
| 19706 | WWTP MP - 3W System Improvements Phase 2 | - | 295,600 | (41,100) | 254,500 | - | 110 | 254,390 | 0% |
| 19708 | Main - Rotork Actuator Replacement | - | 95,000 | | 95,000 | - | 19,115 | 75,885 | 20% |
| 19709 | Main - Polymer Tank (3) Replacement | - | 10,000 | | 10,000 | - | - | 10,000 | - |
| 19710 | Main - 12kV Redundant Line | - | 119,150 | | 119,150 | 74,890 | 702 | 43,558 | 1% |
| 19712 | Main - Utility Generator Power Transition | - | 35,000 | | 35,000 | - | - | 35,000 | - |
| 19713 | Main - Cogen Hot Water to FOG Pad | - | 50,000 | | 50,000 | - | - | 50,000 | - |
| 19715 | Main - ARV Replacement | 31,100 | | | 31,100 | - | - | 31,100 | - |
| 20709 | Main - AB Caustic Pumps & Enclosure | 85,700 | | | 85,700 | 13,071 | 16,630 | 55,999 | 19% |
| 20710 | Main - Septage Pump & Motor Replacement | 28,700 | | | 28,700 | - | - | 28,700 | - |
| 20711 | Main - Marsh-to-Pond Pump Station Upgrade | 88,700 | | | 88,700 | - | - | 88,700 | - |
| 20712 | Main - Grit Pump Rebuild | 60,000 | | | 60,000 | - | 25,621 | 34,379 | 43% |
| 20713 | Main - Elevator Control Update | 400,000 | | | 400,000 | - | - | 400,000 | - |
| 20714 | Main - Flare Rebuild | 50,000 | | | 50,000 | - | - | 50,000 | - |
| 20715 | Main - Concrete Pipe Chase Covers | 80,000 | | | 80,000 | - | - | 80,000 | - |
| 20716 | Plant Door Replacement - Phase 1 | 22,200 | | | 22,200 | - | - | 22,200 | - |
| 20717 | Vehicle 163 - Ford Ranger (Replace w/ F-150) | 33,300 | | | 33,300 | - | - | 33,300 | - |
| 20718 | Vehicle 162 - Ford F-250 Diesel | 43,600 | | | 43,600 | - | 41,835 | 1,765 | 96% |
| 20719 | Vehicle 206 - Forklift TH103 (Telehandler) | 103,100 | | | 103,100 | - | - | 103,100 | - |
| | <u>LAB - EQUIPMENT</u> | | | | | | | | |
| 20720 | Lab - Sampler 4700 Replacement (2) | 20,000 | | | 20,000 | - | 14,596 | 5,404 | 73% |

**Summary of NSD Capital Project Status
through 01-31-20**

| Proj # | Description | FY 19/20 Budget | FY 18/19 Carryovers | Adj. | Final FY 19/20 Budget | Encumbrance | Costs Paid to Date | Budget Remaining | % Budget Expended |
|--------|--|---------------------|---------------------|----------|-----------------------|--------------------|--------------------|---------------------|-------------------|
| | <u>SCADA</u> | | | | | | | | |
| 18729 | SCADA MP Project #1 - Network Monitoring | - | 46,200 | | 46,200 | - | - | 46,200 | - |
| 19718 | SCADA MP Phase 5 Security Study | - | 88,250 | | 88,250 | 10,027 | 29,415 | 48,808 | 33% |
| | | | | | | | | | |
| | <u>RECYCLING - PROJECTS</u> | | | | | | | | |
| 13727 | North Bay Wate Reuse Project | 150,000 | | | 150,000 | - | - | 150,000 | - |
| 18730 | Jameson 24" Flow Meter Rehab | - | 6,200 | | 6,200 | - | - | 6,200 | - |
| 18731 | Coombsville Truck Fill Station | 300,000 | 144,400 | | 444,400 | 84,927 | 291,664 | 67,809 | 66% |
| 19719 | 24-inch Valve Replacement - Kirkland Line | - | 5,000 | | 5,000 | - | - | 5,000 | - |
| 19720 | Jameson PS VFD | - | 68,900 | (68,900) | - | - | - | - | - |
| 20721 | Kirkland Recycled Water Pipeline Rehabilitaton | 60,000 | | 10,000 | 70,000 | 54,052 | 7,515 | 8,433 | 11% |
| | | | | | | | | | |
| | <u>RECYCLING - EQUIPMENT</u> | | | | | | | | |
| 19722 | Vehicle 723/720 - Attachments/Implements | 29,700 | | (29,700) | - | - | - | - | - |
| 20722 | Badger Meter Replacement | 80,000 | | | 80,000 | - | - | 80,000 | - |
| 20723 | CT-5 Composter (Ag-Bag) | - | - | 29,700 | 29,700 | - | - | 29,700 | - |
| | | | | | | | | - | |
| | <u>OTHER</u> | | | | | | | - | - |
| 13729 | Development Technical Support | 337,000 | | | 337,000 | - | 155,057 | 181,943 | 46% |
| 19723 | AV System Replacement - Conference Rooms | - | 20,000 | | 20,000 | - | - | 20,000 | - |
| 19725 | Vehicle 011 - CSET Trailer | - | 7,100 | | 7,100 | - | 3,800 | 3,300 | 54% |
| | | | | | | | | | |
| | | \$33,873,300 | \$5,173,700 | - | \$39,047,000 | \$4,175,081 | \$6,596,733 | \$28,275,185 | 17% |