

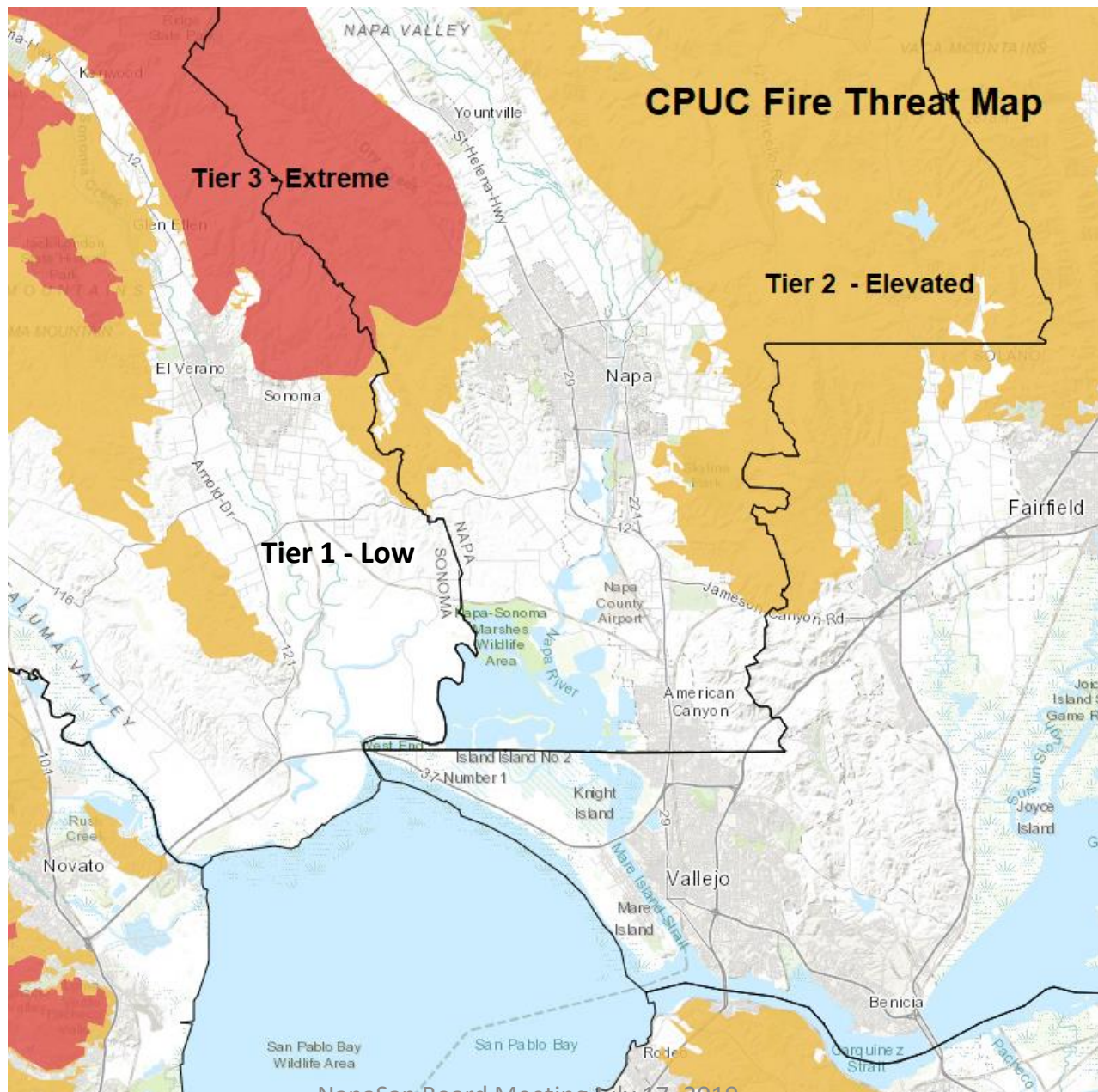
PG&E Wildfire Safety Program Impacts

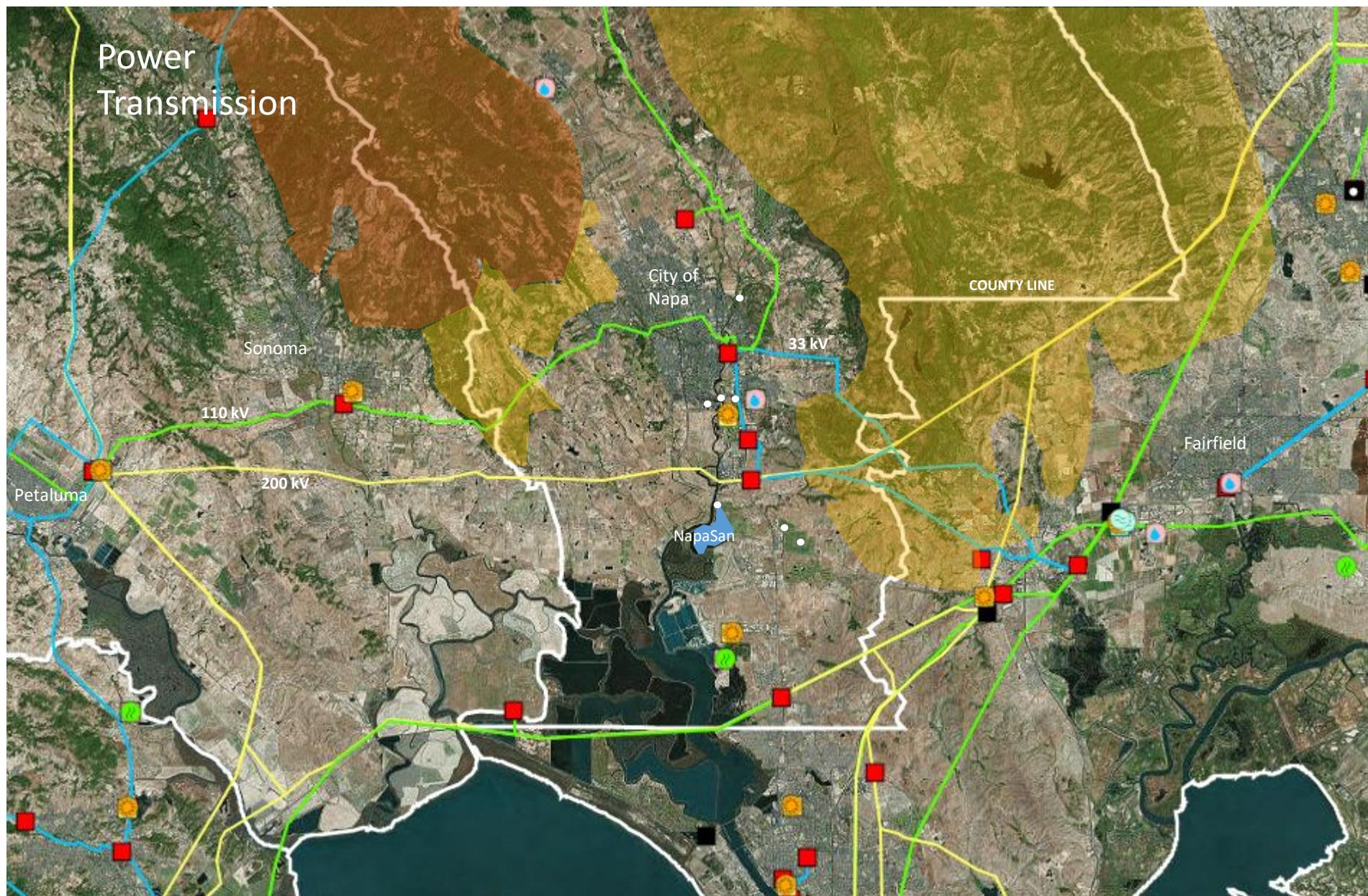
Power Outage Considerations

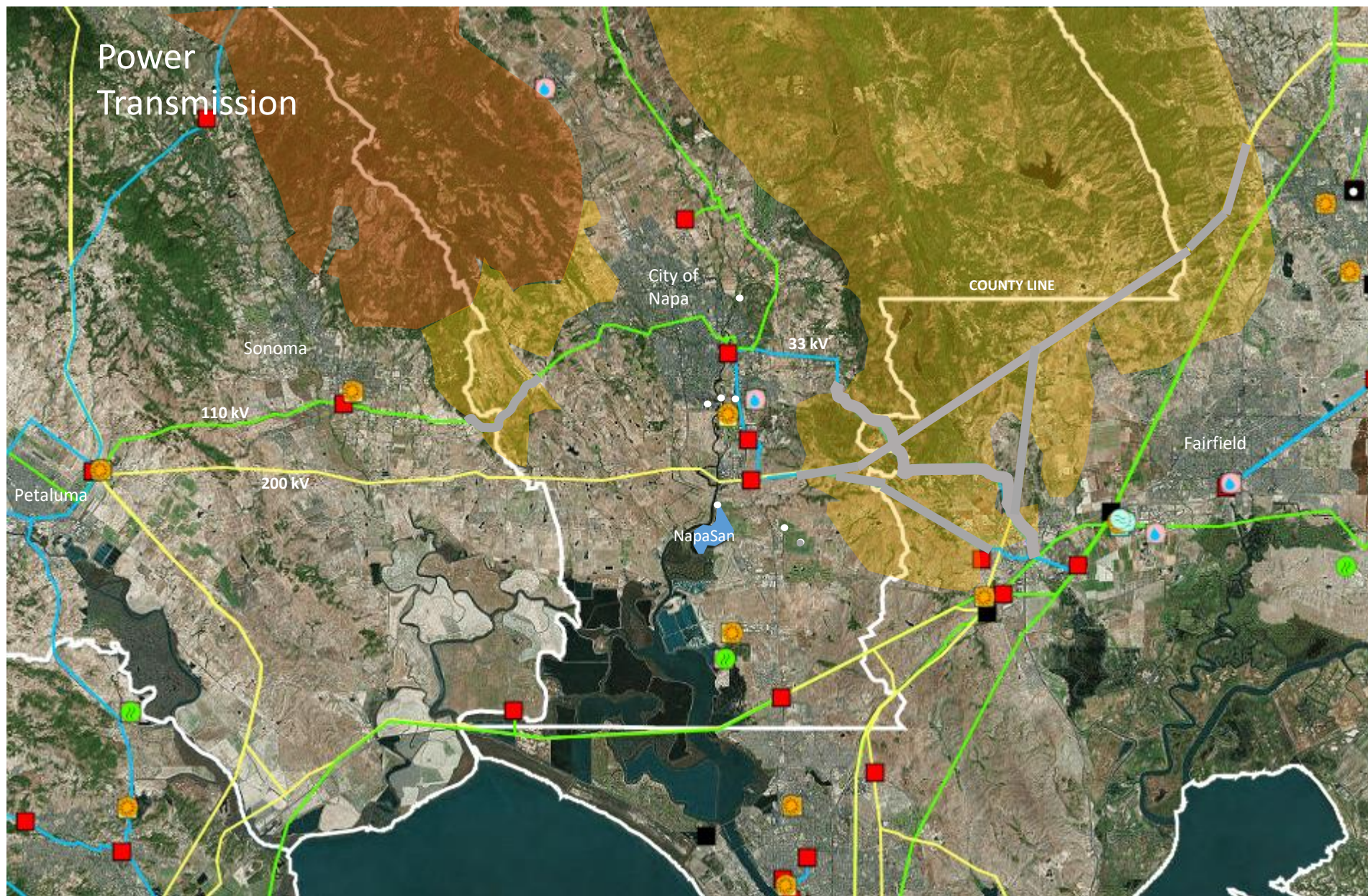
- Red Flag Warning Tier 2 & Tier 3
- Low Humidity
- Forecasted Sustained Winds (>25mph)
- Condition of Dry Fuel
- On the Ground Real-Time Observations

PSPS Event Notifications

- 48 HOURS before power is turned off
- 24 HOURS before power is turned off
- JUST BEFORE power is turned off
- DURING PUBLIC SAFETY OUTAGE (24-48 hours)
- ONCE POWER HAS BEEN RESTORED







NapaSan Meter Electric Accounts

PG&E ID	Address	Public Safety Risk	Facility	Stand-by Generator	Fuel	Fuel Cap/ Days
6387157070	1 Soscol Ferry Rd	High	Treatment Plant	Yes	Diesel	2.5
6387157889	795 Coombs St	High	W Napa PS	Yes	Diesel	2.0
6387157234	1829 Silverado Trail	High	Silverado PS	Yes	Diesel	2.0
6387157184	1 Jefferson St	High	Riverpark PS	Yes	Diesel	2.0
6387157518	1 N Kelly Rd	Low	Jameson Ranch Power	No		
6383093723	136 LYNCH RD	Low	Jameson Booster PS	No		
6387157687	1055 Imola Ave	Low	BPS-1	No		
6387157733	850 Pearl St	Low	N Napa PS	No		

Equipment Resiliency

- Monthly generator operational testing
- Fuel Inventory > 90%
- Two Fuel Suppliers
- Pump around capability

Conclusions

- PG&E's Wildfire Program Poses Low Risk to the District
- NapaSan maintains high reliability status of standby generators
- In the event of extended outage NapaSan has developed protocols for operational continuity