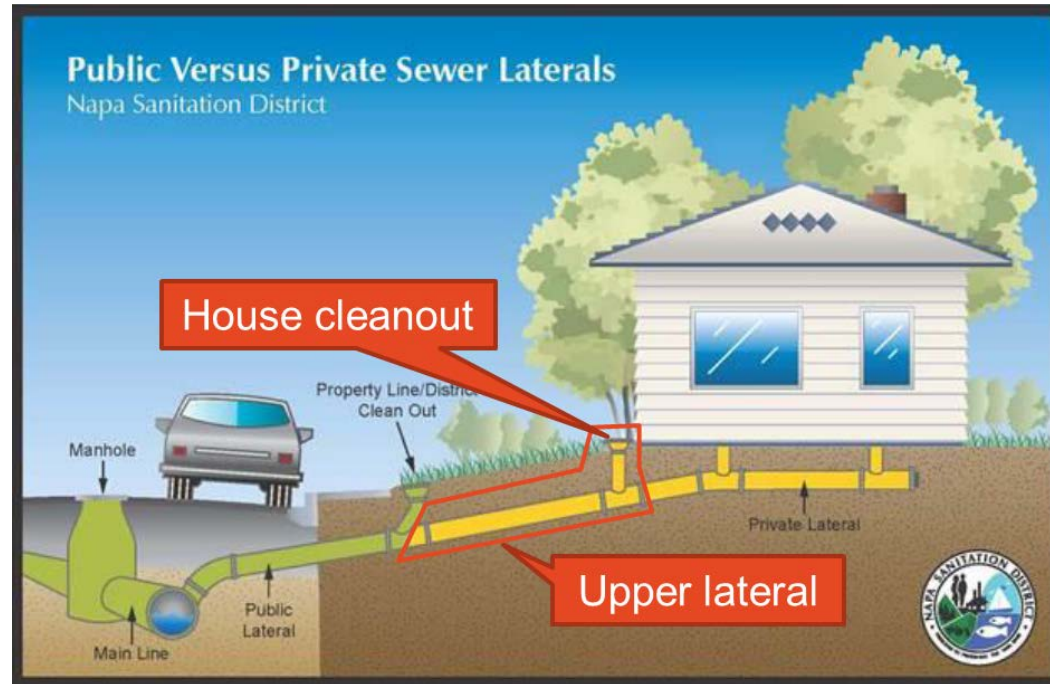


# Upper Lateral Rehabilitation Pilot Project #4 (CIP 18703)





# Background

- Upper laterals are a potential source of I&I
- Pilot Program History
  - 2010 (Spring St.) 34 of 35 laterals
  - 2016 (Basin L Pilot #1) 36 of 39 laterals
  - 2017 (Basin L Pilot #2) 19 of 27 laterals
- Results to Date
  - 180,000 gpd total peak flow reduction (34% avg)
  - Results have varied by project (32%, 61%, 8%)

# Background





# Project Selection

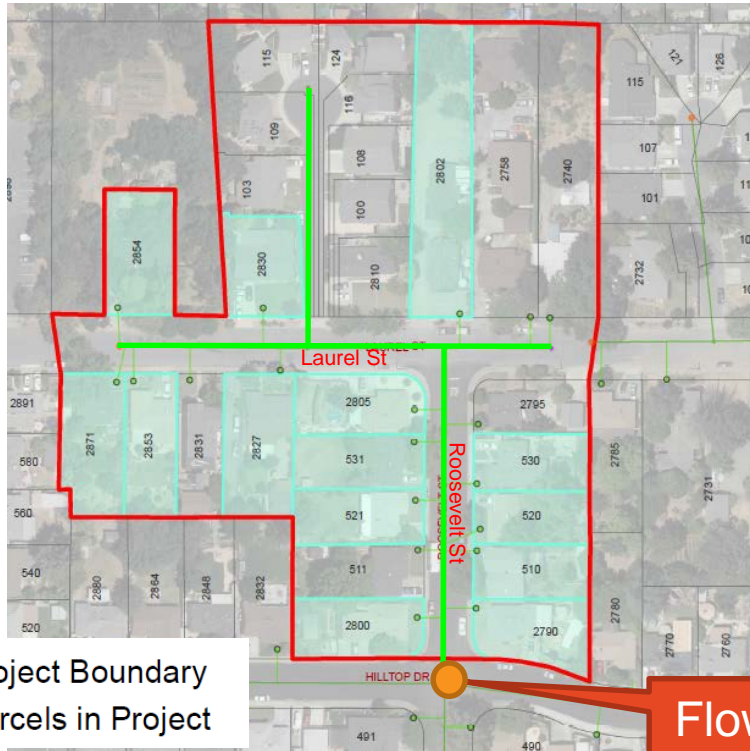
- 4 Potential Project Sites
  - Site 5 – South Minahen – 85,000 gpd
  - **Site 6 – Laurel – 113,000 gpd**
  - Site 7/8 – Oxford – 45,000 gpd
  - Site 10 – Upper Alphabet – 64,000 gpd
- 4,185 gal/property – peaking factor of 8.0

# Project Location





# Project Details



- 27 parcels in project area
- 13 removed – recent replacement or newer construction
- 14 laterals to be rehabilitated
- Engineer's estimate: **\$42,000**
- Construction in August/September



# Project Details

- Community Outreach:
  - Letters to property owners
  - Signed private right-of-entry forms
  - Permission to install/replace house cleanouts
  - Investigate potential illicit connections



# Recommendation

- Approve the Project, concur with Staff's determination that the Project is categorically exempt, and authorize the General Manager to issue Notice Inviting Bids for the Upper Lateral Rehabilitation Pilot Project #4 (CIP 18703).