

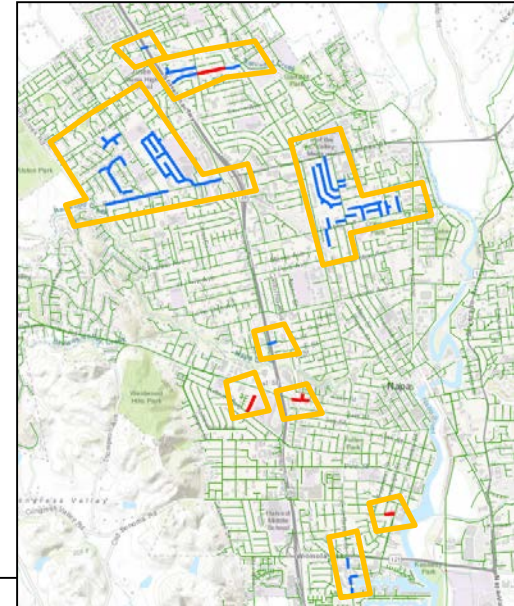
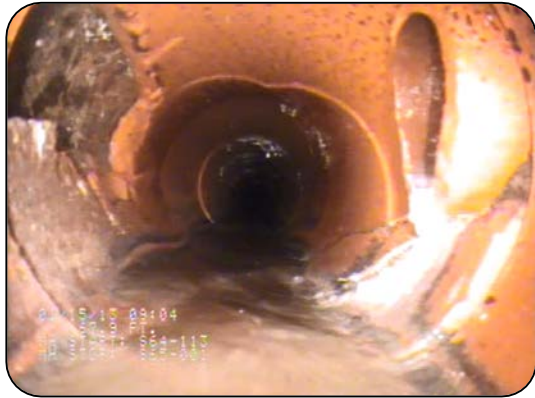
The background of the slide is a photograph of a large, circular wastewater treatment tank. The tank is filled with a thick layer of green sludge. A metal walkway with railings runs along the edge of the tank. The tank is surrounded by a concrete wall.

Proposed 10-Year Capital Improvement Plan FY 19/20 – FY 28/29

NapaSan Board of Directors Meeting
May 15, 2019

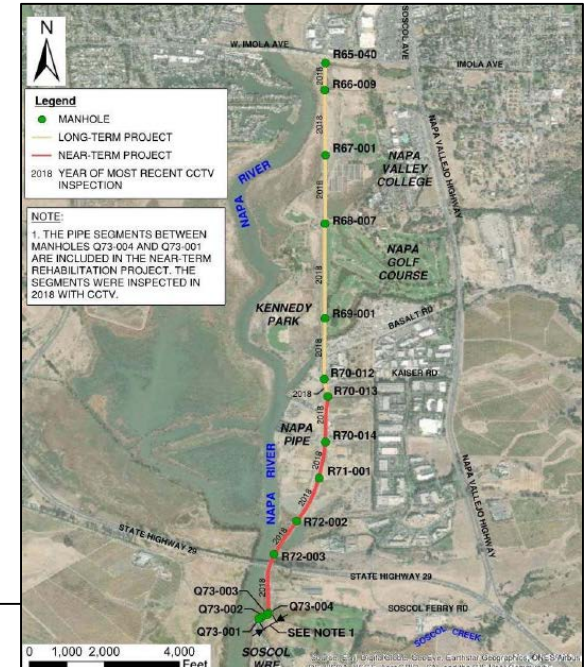
Completed Projects 18/19

- Major projects - Collections Department
 - 2018 Collection System Rehabilitation (2.5% of the system)



Completed Projects 18/19

- Major projects - Collections Department
 - 66-inch Trunk Condition Assessment and Capacity Analysis



Completed Projects 18/19

- Major projects – Treatment Plant
 - 2018 Treatment Plant Improvements



Completed Projects 18/19

- Major projects – Recycled Water
 - Reservoir Covers





Continuing Projects

- Major projects from FY 18/19
 - Browns Valley Trunk & West Napa Pump Station
 - 2019 Collection System Rehabilitation (constr.)
 - 2019 Treatment Plant Improvements (constr.)
 - Pond 1 Dredge (design)
 - Headworks Equipment Replacement (constr.)
 - Collection System Master Plan
 - Primary Clarifier & DAFT Rehabilitation (design)
 - Coombsville Truck Fill Station (constr.)



Continuing Projects

- Major projects from FY 18/19
 - Pond Transfer Structures (constr.)
 - 12kV Condition Assessment
 - 66-inch Trunk Main Rehabilitation (design)



Ongoing Projects

- Annual Efforts
 - I/I Reduction Program
 - Manhole Raising
 - Mainline Repairs
 - Lateral Rehabilitation
 - Cleanout Installation
 - Development Technical Support



New Projects for FY 19/20

| Collection System | Treatment Plant | Treatment Plant Structures | Recycled Water |
|--|---|--|--|
| <ul style="list-style-type: none">• 2020 Collection System Rehabilitation• Upper Lateral Pilot #4 | <ul style="list-style-type: none">• Pond Levee Repair | <ul style="list-style-type: none">• 2020 Treatment Plant Improvements• Digester Tower Elevator Control Update | <ul style="list-style-type: none">• Kirkland Pipeline Rehab Study• Meter Replacements |



10-Year Financial Plan

Pay-As-You-Go
for Rehab &
Replacement

\$166,521,150 (65.5%)

Debt Financing

\$86,460,500 (34.0%)

- Browns Valley Road Truck & WNPS, Second Digester & Third ABs, Future RW Expansion (75%), 66-in Trunk
-

Paid for by
Other Agencies

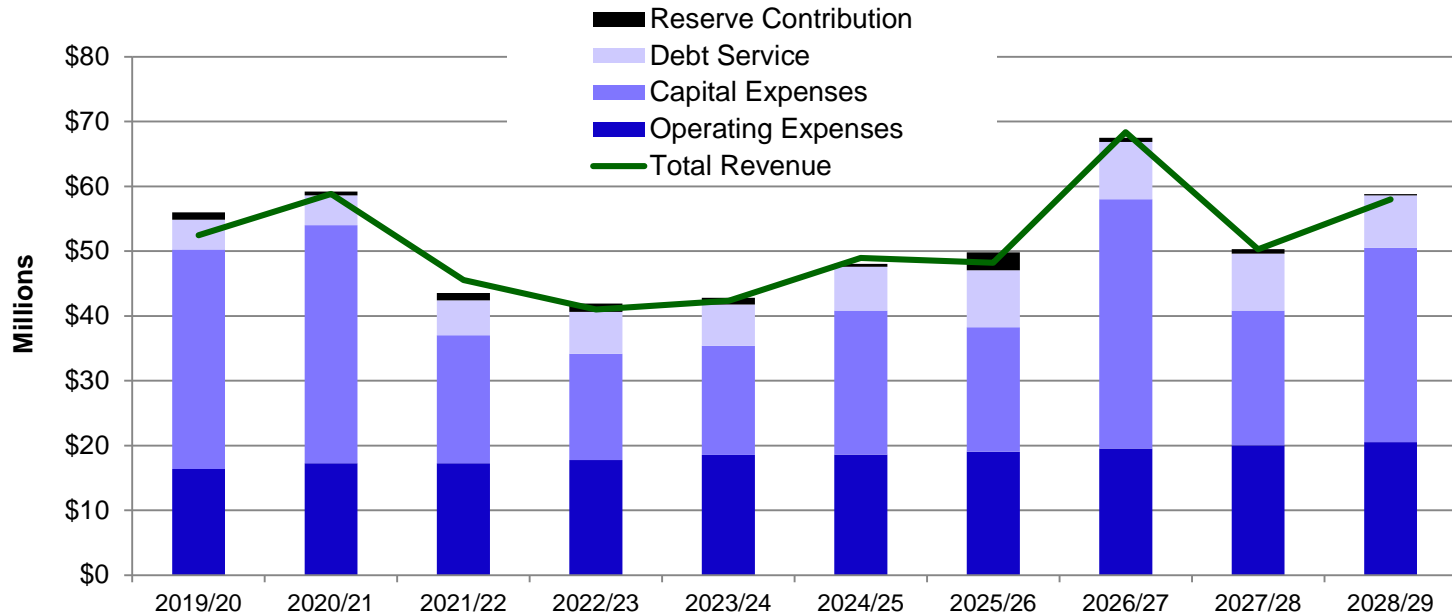
\$1,275,000 (0.5%)

- Future RW Expansion (25%)
-



10-Year Financial Plan

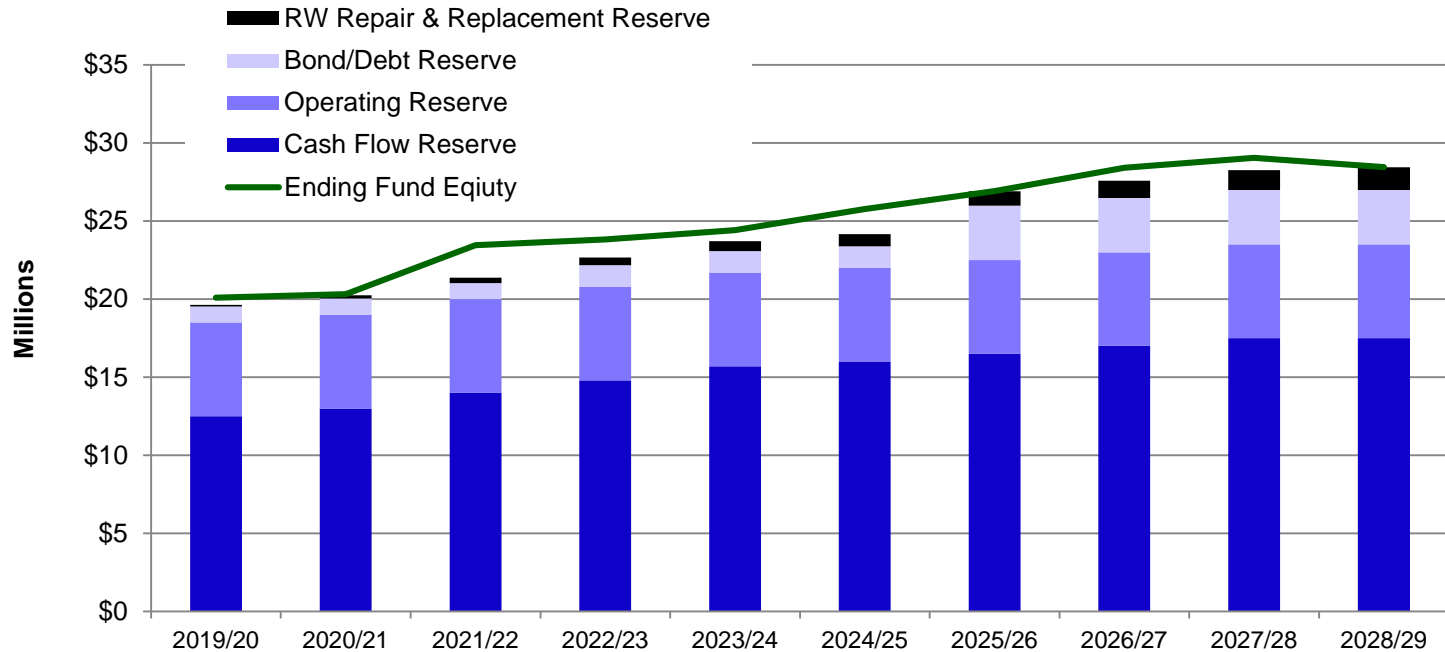
Revenue vs. Expenditures





10-Year Financial Plan

Ending Fund Equity Projections





Debt Summary

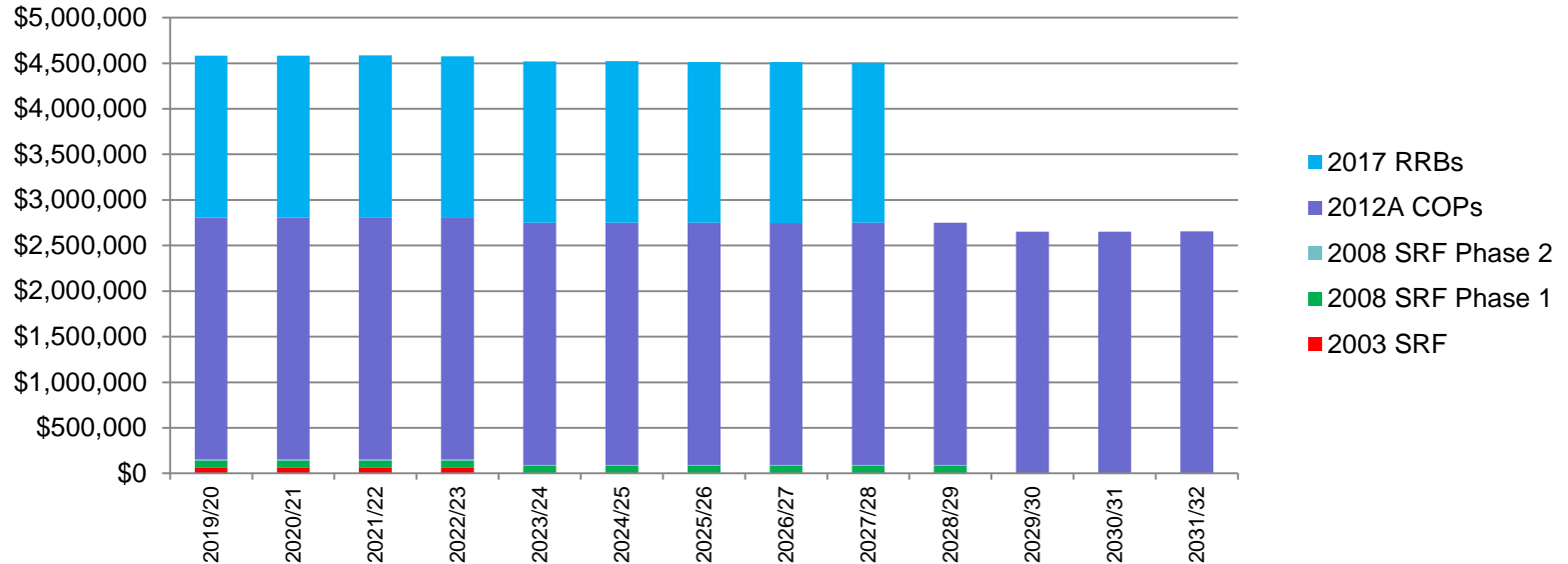
- Four Outstanding Debt Issues

| | Original Debt <u>Amount</u> | 6/30/19 <u>Balance</u> | FY 19/20 <u>Payment</u> |
|--------------------|--------------------------------|---------------------------|----------------------------|
| 2003 SRF | \$901,376 | \$226,646 | \$60,247 |
| 2008 SRF-Ph. 1 & 2 | \$1,559,673 | \$846,642 | \$93,581 |
| 2012A – COP | \$37,845,000 | \$29,485,000 | \$2,652,975 |
| 2017 RRB | \$14,185,000 | \$14,060,000 | \$1,776,900 |



Debt Summary

- Four Outstanding Debt Issues



Debt Summary

- Future Debt Issues
 - FY 2019/20 – 66-in Trunk Rehab (Kaiser to IPS)



Debt Summary

- Future Debt Issues
 - FY 2022/23 – RW Expansion (NBWRA Projects)



Debt Summary

- Future Debt Issues
 - FY 2024/25 – Second Digester & Third ABs



Debt Summary

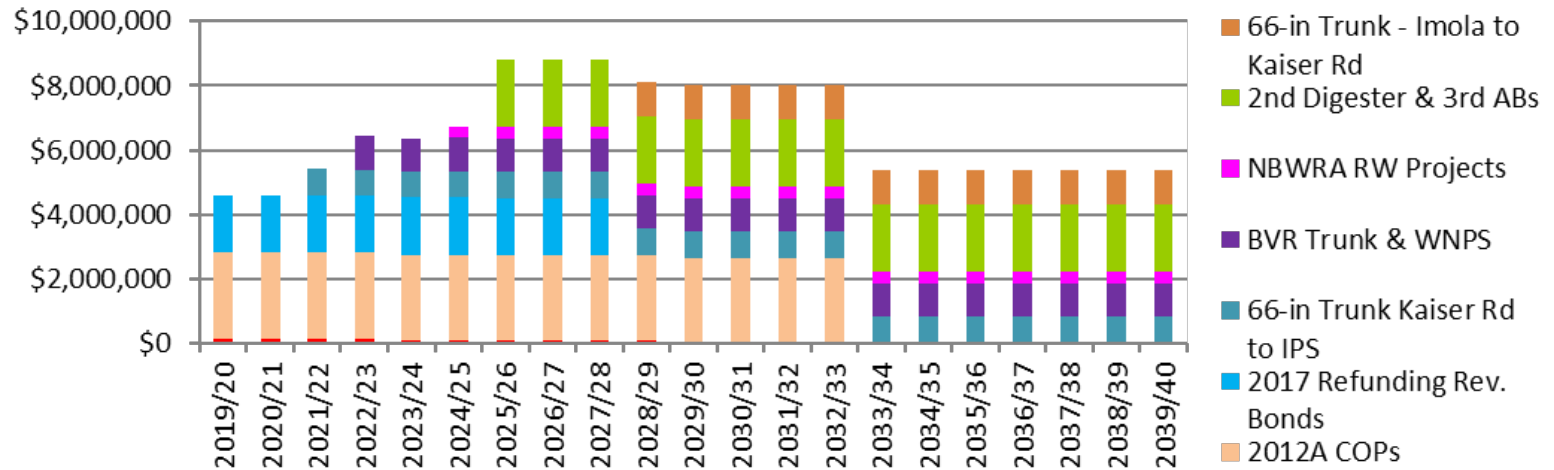
- Future Debt Issues
 - FY 2027/28 – 66-in Trunk Rehab (Imola to Kaiser)





Debt Summary

- Future Debt Service



Questions