



**Napa Sanitation District**

**General Manager's Report**

**for**

**August, 2018**

**Contents:**

- a. Transmittal Memo
- b. Budget Status and Cash Summary
- c. Key Information Graphs – Fund Balances, Treatment Plant and Collection
- d. Fund Balances
- e. Development Processing
- f. Construction Inspection
- g. Pollution Prevention
- h. Recycled Water Deliveries
- i. Biosolids Handling
- j. Collection System Maintenance
- k. Treatment Plant Operations
- l. Treatment Plant Maintenance & Laboratory
- m. Capital Project Expenditure Summary



## NAPA SANITATION DISTRICT

## General Manager's Report

**DATE:** October 17, 2018

**FROM:** Timothy B. Healy, General Manager

**SUBJECT:** General Manager's Report for August 2018

### **REGULATORY COMPLIANCE:**

Collection System Compliance:	0 Category 1 SSO's, 0 Category 2 SSO's, and 7 Category 3 SSO's
NPDES Permit (WWTP) Compliance:	Full compliance with all regulations
Air Quality Compliance:	Full compliance with all regulations
Recycled Water Compliance:	Full compliance with all regulations
Biosolids Compliance:	Full compliance with all regulations
Significant Comments:	None

### **FISCAL STATUS:**

Period Covered:	July 1, 2018 – August 31, 2018
Percent Fiscal Year:	16.7%
Operating Expenditures to date:	30.7%
Historical Expenditures to date:	26.2%
Significant Comments:	Includes 25% of intrafund transfer from Operating to Capital.

### **PERSONNEL:**

Significant events for the month of August 2018 in the Human Resources Department:

New Hires:	None
Separations:	None
Promotions:	None
Recruitment Activities:	Continued recruitment for Operator-in-Training/Operator I
Injuries:	Minor head injury/cervical strain – no lost time

*Summaries of Operational Highlights are on following pages.*

### **COLLECTIONS:**

Significant events for the month of August 2018 in Collection System Maintenance include:

- The District had 0 Category 1 Sanitary Sewer Overflows (SSO's), 0 Category 2 SSO's and 7 Category 3 SSO's during the month. (A Category 1 is defined as an SSO that reached a drainage channel and/or surface water or; an SSO that reached a storm drainpipe that was not fully recovered and returned to the sanitary sewer system. A Category 2 is defined as an SSO that is equal to or greater than 1,000 gallons that did not reach a surface water. A Category 3 is defined as an SSO that is less than 1,000 gallons that did not reach a surface water. These are usually minor overflows of less than 10 gallons from cleanouts on District laterals that can be cleaned up by the crews.)
- The repair crew installed 25 cleanouts and repaired 9 cleanouts. They also repaired 5 laterals and installed 3 lateral liners. Additionally, the service response/programs crew completed 80 work orders in support of the grease and odor control program, responded to 44 customer requests for service (16 were NSD problem) and closed out 303 mark and locate request tickets.
- The preventative maintenance crews ran work orders on 164 laterals, cleaned approximately 70,204 feet of main line and CCTV inspected 28 laterals. In addition, the CCTV truck televised 22,780 feet of mainline.
- We also finalized our "in house" lateral root foaming program (this is usually contracted), which will prevent wear and tear on our laterals due to our PM program. We completed 12 root foaming work orders.

### **TREATMENT PLANT:**

Significant events for the month of August 2018 in the Treatment Plant Department:

#### **Plant Operations:**

- For August 2018, the plant's influent flow was 186.1 MG as compared to last year flow for August 2017 of 199.7 MG
- There was no Flow to the Napa River for August 2018.
- The production of recycle quality occurred for 31 days during August 2018 with a total distributed flow of 124.44 MG.
- There was 0.00" rainfall for August 2018 as compared to 0.00" rainfall for August 2017.
- Pond 4 end of the month recorded level reading was 17.00" as compared to August 2017 of 27.95". Total remaining pond capacity for August 2018 was 61.7% as compared to August 2017 remaining capacity of 56.0%.

Power Consumption and Production:

- This August power consumption purchased from PG&E was 360 MWH in comparison to August 2017 purchase of 469 MWH
- Cogeneration unit ran 694 of 744 hours for the month – 93.28% uptime, averaging 325.11 Kw, producing 258 MWH of energy.
- Solar generation in August was 179 MWH, compared to 210 MWH in July.

Maintenance:

Significant events for the month of August 2018:

Process Maintenance

- Cogeneration unit monthly emission test - in compliance with BAAQMD permit
- Cogen service:
- Changed oil and filters
- Replaced pre-air filter and main air filter
- Replaced Air Compressor in OMI odor unit
- Installed new piping/west hypo mix box
- Belt Press #2/replaced gravity belt

Projects

- Digester Recirc Pump #2/replaced wet-end assembly and seal

Standby Power

- Plant generators operational testing only
- Riverpark, Stonecrest, West Napa operational testing only

Influent Pumps

- All pumps operational

Laboratory:

Monthly **Influent** monitoring of all parameters occurred at the required frequencies. The following were notable sampling events:

August 1, 2018:       Metals, Cyanide, Mercury

**RECYCLING:**

Significant events in the Recycling Department for August 2018 include:

- Recycled water delivered for the month of August 2018 (121.016 million gallons), as compared to August 2017 (143.481 million gallons) is lower due to district use. Recycled water sales increased by 6.055 million gallons for the month of August 2018 as compared to August 2017. Delivered recycled water volume represents the sum of all use site flow meter consumption values.
- Staff approved one service connection in the MST area.
- Staff continued land application of biosolids on Jameson Reuse Site for the reporting period.

### **POLLUTION PREVENTION:**

Significant events in the Pollution Prevention and Outreach Division August 2018 include:

- There were three tours of the treatment plant given in August.
- NapaSan staff participated in a radio show on KBBF, which broadcasts in Napa and Sonoma Counties. The radio show discussed pollution prevention efforts and upcoming NapaSan events and programs.
- In partnership with the Environmental Education Coalition of Napa County, NapaSan staff organized and hosted two environmental movie nights for families at the Napa County library.
- Pharmaceuticals were collected at Family Drug, but the totals will not be recorded until September's GM Report. The total amount of unneeded medications collected since the drug takeback program began in September 2010 is 21,271.2 pounds.
- There were no ESME Washer Rebates issued this month.

### **ENGINEERING / CAPITAL PROJECTS / DEVELOPMENT:**

Significant events occurring in the Engineering Division for August 2018 include:

- The Headworks Equipment Replacement Project construction contract was awarded to Syblon Reid. HDR and Psomas Group were contracted for the Engineering Services during Construction and Construction Management, respectively.
- Staff continued receiving deliveries of floating reservoir covers for the Recycled Water Reservoir Improvements Project.
- Contractor completed construction of the 2017 Collection System Rehabilitation Project Pavement Restoration.
- Contractor continued construction of the 2018 Collection System Rehabilitation Project.
- Staff continued design of the 2019 Collection System Rehabilitation Project.
- Consultant/Contractor continued condition assessment phase for the 66-inch Trunk Sewer Rehabilitation Project.

- The 2018 Manhole Adjustment Project, Phase VIII was awarded to G.D. Nielson Construction. Staff issued Notice to Proceed and Contractor began construction.
- Staff issued Request for Qualifications for Condition Assessment, Design, and Construction Management for the Primary Clarifier Rehabilitation Project.
- Consultant continued design of the Browns Valley Trunk Project.
- Consultant continued design of the West Napa Pump Station Project.
- Consultant continued the preliminary design study for the Pond 1 Dredge Project.
- Consultant and Staff continued work on Phase 1A and Phase 1B of the Asset Management Program.
- Contractor continued construction of the 2018 Treatment Plant Improvement Project.
- Staff and consultant started design of the 2019 Treatment Plant Improvement Project.
- Consultant began working on Phase 1 of the Collection System Master Plan.
- Staff reviewed 47 sets of development plans and deemed 25 sets of plans complete. The approved plans consisted of 2 recycled water laterals, 7 tenant improvements, 13 residential dwellings, 1 public lateral, 1 commercial unit, and 1 residential lateral.

**Budget Status & Cash Summary - July 1, 2018 - August 31, 2018 (16.7% of the year)**

<i>Expenditures</i>	<b>FY 18/19 Budget</b>	<b>Encumbrances</b>	<b>Expenditures to date</b>	<b>Committed to date</b>	<b>Remaining Balance</b>	<b>Percent Committed</b>
<b><u>Operating</u></b>						
Salaries & Benefits	\$9,961,350	\$3,419	\$1,296,888	\$1,300,306	\$8,661,044	13.1%
Services & Supplies	\$6,003,100	1,221,631	679,739	1,901,370	4,101,730	31.7%
Taxes	29,150	-	-	-	29,150	0.0%
Debt Service	4,593,800	-	3,618,013	3,618,013	975,788 (1)	78.8%
Intrafund Transfers	8,900,000	-	2,225,000	2,225,000	6,675,000	25.0%
<b>Total Operating:</b>	<b>\$29,487,400</b>	<b>\$1,225,049</b>	<b>\$7,819,639</b>	<b>\$9,044,688</b>	<b>\$20,442,712 (2)</b>	<b>30.7%</b>
<b><u>Capital</u></b>						
Bldgs/Improvements & Equip	\$26,385,700	\$37,642	\$324,870	\$362,512	\$26,023,188 (3)	1.4%
Intrafund Transfers	7,250,000	-	3,782,481	3,782,481	3,467,519	52.2%
<b>Total Capital :</b>	<b>\$33,635,700</b>	<b>\$37,642</b>	<b>\$4,107,351</b>	<b>\$4,144,994</b>	<b>\$29,490,706</b>	<b>12.3%</b>
<b>Grand Total Expenditures:</b>	<b>\$63,123,100</b>	<b>\$1,262,691</b>	<b>\$11,926,990</b>	<b>\$13,189,682</b>	<b>\$49,933,418</b>	<b>20.9%</b>

<i>Revenues</i>	<b>FY 18/19 Budget</b>	<b>Encumbrances</b>	<b>Revenues to date</b>	<b>Revenues posted to date</b>	<b>Unposted Revenue</b>	<b>Percent Posted</b>
<b><u>Operating</u></b>						
Use of Money/Property	\$1,036,000		\$188,954	\$188,954	\$847,046	18.2%
Intergovernmental	\$0		\$0	-	-	N/A
Charges for Services	29,571,800		624,136	624,136	28,947,664	2.1%
Miscellaneous Revenues	63,000		16,729	16,729	46,271	26.6%
Donations/Contributions (Capital Labor)	-		144,659	144,659	(144,659) (4)	N/A
<b>Total Operating:</b>	<b>\$30,670,800</b>		<b>\$974,477</b>	<b>\$974,477</b>	<b>\$29,696,323</b>	<b>3.2%</b>
<b><u>Capital</u></b>						
Use of Money/Property	\$0		\$0	\$0	\$0	N/A
Capacity Charges	4,614,600		730,936	730,936	3,883,664	15.8%
Intergovernmental	375,000		-	-	375,000	0.0%
Bond/Loan Proceeds	9,075,000		-	-	9,075,000	0.0%
Sale of Assets	25,000		-	-	25,000	N/A
Miscellaneous Revenues	5,000		-	-	5,000	N/A
Intrafund Transfers	16,150,000		6,007,481	6,007,481	10,142,519	37.2%
<b>Total Capital:</b>	<b>\$30,244,600</b>		<b>\$6,738,417</b>	<b>\$6,738,417</b>	<b>\$23,506,183</b>	<b>22.3%</b>
<b>Grand Total Revenue:</b>	<b>\$60,915,400</b>		<b>\$7,712,894</b>	<b>\$7,712,894</b>	<b>\$53,202,506</b>	<b>12.7%</b>

**Cash on Hand as of 8/31/18**

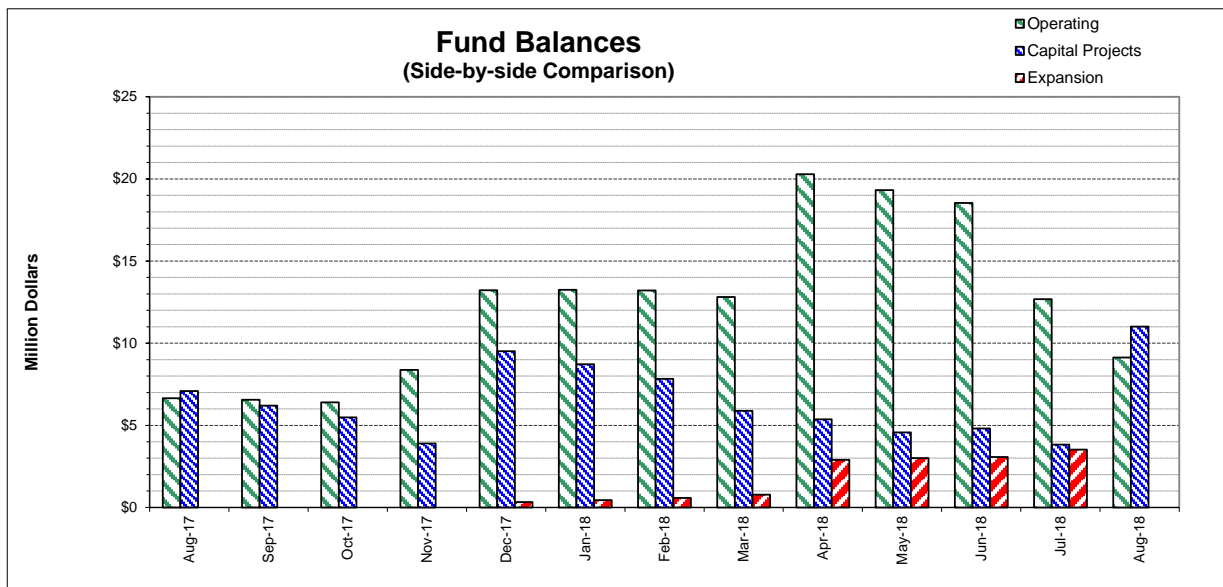
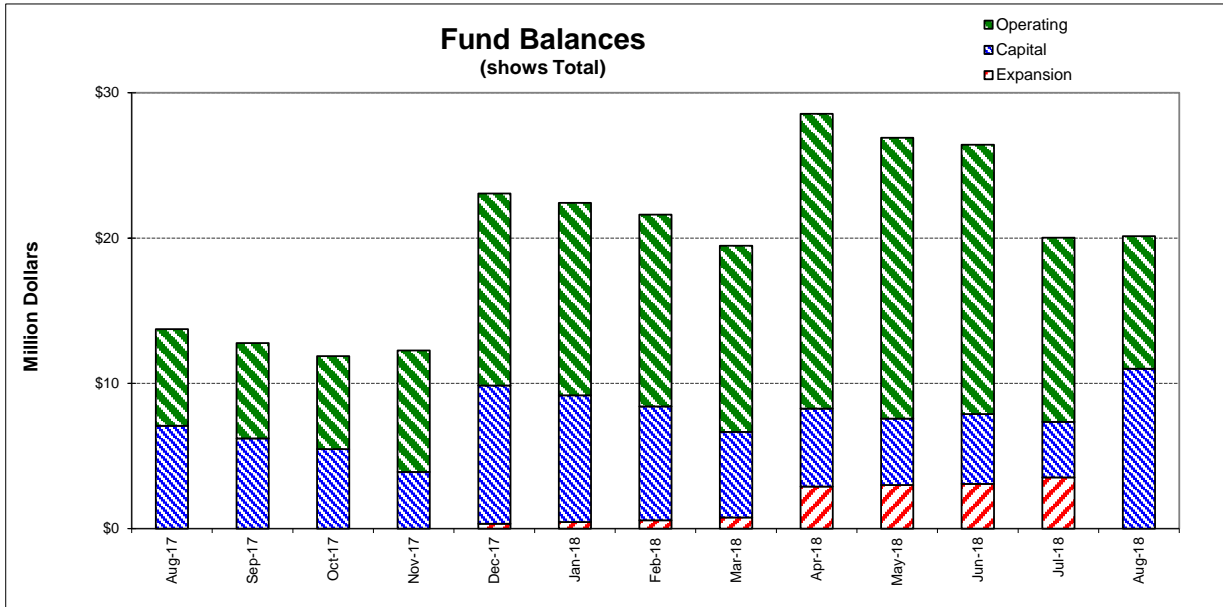
**\$20,132,395**

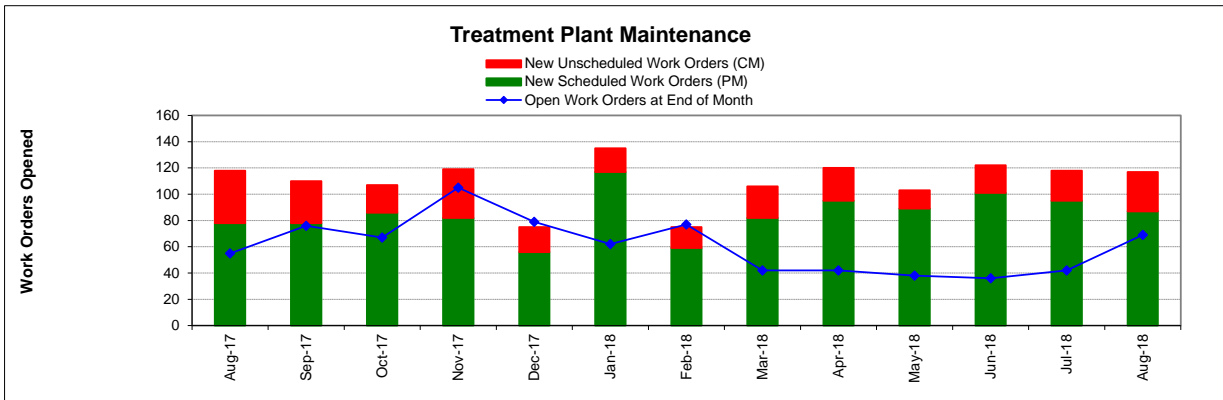
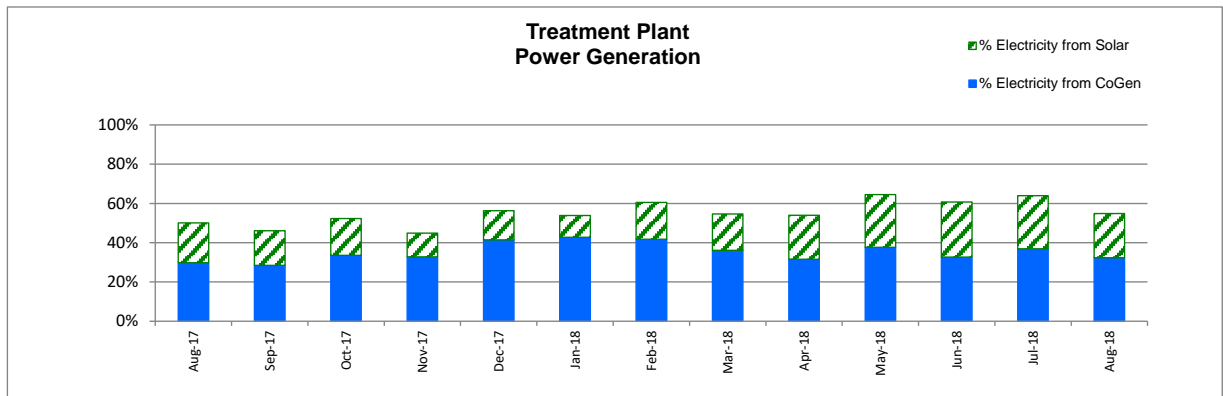
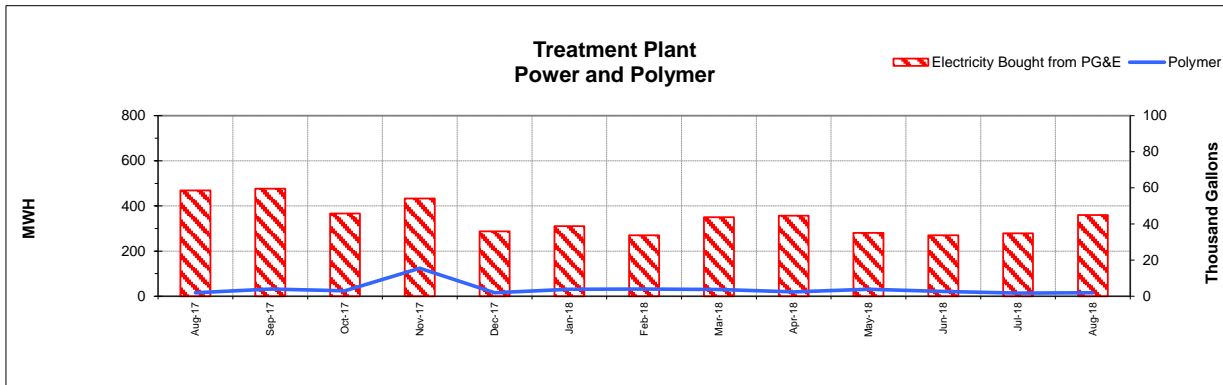
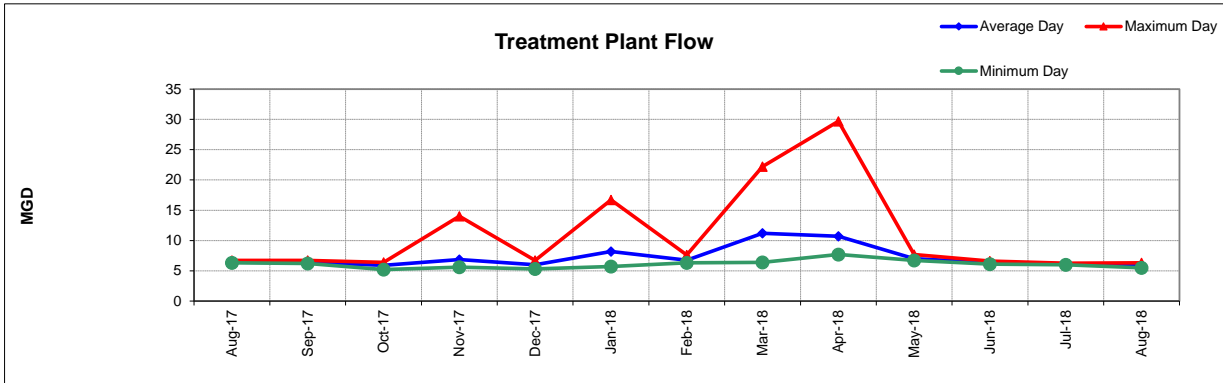
\*\*excluding Debt Service restricted funds  
8/31/18 -Effective Rate of Return = 1.76%

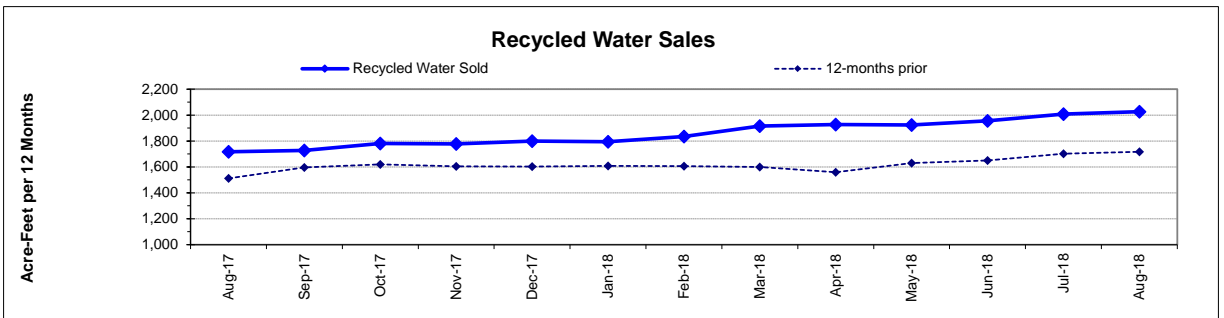
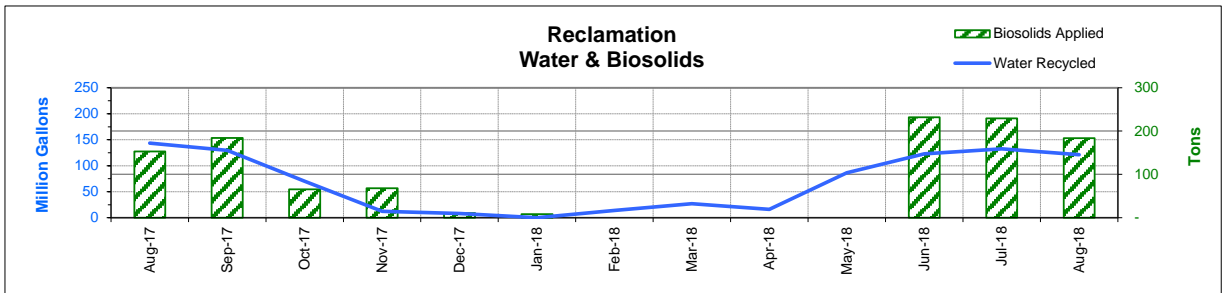
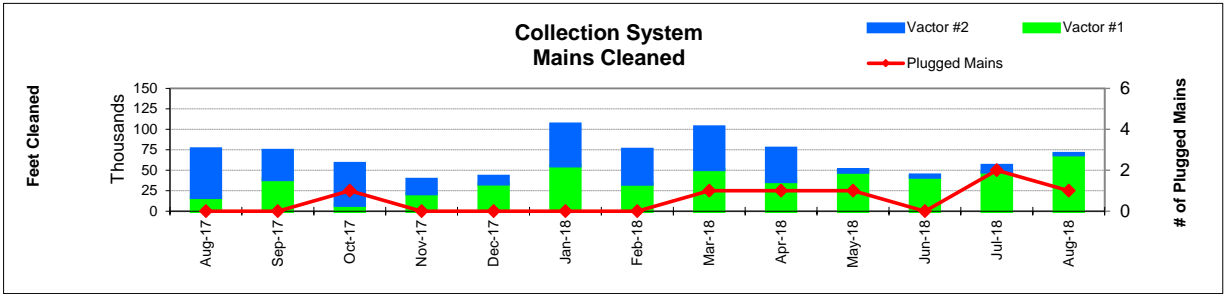
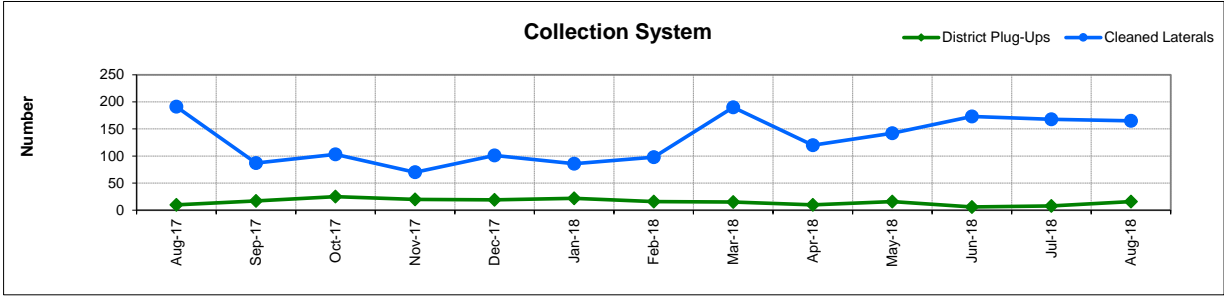
1. Series 2012A's and 2017's principal/interest payments are made in Aug & Feb
2. Includes Debt Service and Intrafund Transfers; otherwise is 20.0%
3. See Capital Project Status report for details
4. In-house Labor for Capital Projects (Contra acct for Salaries)

**This page intentionally left blank.**









**FUND BALANCES - MONTHLY**

<b>CATEGORY</b>	<b>Aug-17</b>	<b>Sep-17</b>	<b>Oct-17</b>	<b>Nov-17</b>	<b>Dec-17</b>	<b>Jan-18</b>	<b>Feb-18</b>	<b>Mar-18</b>	<b>Apr-18</b>	<b>May-18</b>	<b>Jun-18</b>	<b>Jul-18</b>	<b>Aug-18</b>
<i>(Thousand Dollars)</i>													
7800	6,645	6,560	6,395	8,372	13,220	13,251	13,210	12,818	20,290	19,326	18,538	12,676	9,123
7850	-	-	-	-	-	-	-	-	-	-	-	-	-
<b>Subtotal Operating</b>	<b>6,645</b>	<b>6,560</b>	<b>6,395</b>	<b>8,372</b>	<b>13,220</b>	<b>13,251</b>	<b>13,210</b>	<b>12,818</b>	<b>20,290</b>	<b>19,326</b>	<b>18,538</b>	<b>12,676</b>	<b>9,123</b>
Capital Improvement Projects	7,083	6,205	5,480	3,897	9,514	8,720	7,830	5,877	5,365	4,573	4,808	3,825	11,009
Debt Proceeds	-	-	-	-	-	-	-	-	-	-	-	-	-
<b>Subtotal Capital</b>	<b>7,083</b>	<b>6,205</b>	<b>5,480</b>	<b>3,897</b>	<b>9,514</b>	<b>8,720</b>	<b>7,830</b>	<b>5,877</b>	<b>5,365</b>	<b>4,573</b>	<b>4,808</b>	<b>3,825</b>	<b>11,009</b>
<b>Total Discretionary Funds</b>	<b>13,728</b>	<b>12,765</b>	<b>11,875</b>	<b>12,269</b>	<b>22,734</b>	<b>21,971</b>	<b>21,040</b>	<b>18,695</b>	<b>25,655</b>	<b>23,899</b>	<b>23,346</b>	<b>16,501</b>	<b>20,132</b>
Expansion Fund (Restricted)	-	-	-	-	332	449	577	775	2,898	3,007	3,075	3,520	-
<b>Total Restricted Funds</b>	<b>-</b>	<b>-</b>	<b>-</b>	<b>-</b>	<b>332</b>	<b>449</b>	<b>577</b>	<b>775</b>	<b>2,898</b>	<b>3,007</b>	<b>3,075</b>	<b>3,520</b>	<b>-</b>
<b>TOTAL ALL FUNDS</b>	<b>13,728</b>	<b>12,765</b>	<b>11,875</b>	<b>12,269</b>	<b>23,066</b>	<b>22,420</b>	<b>21,617</b>	<b>19,470</b>	<b>28,553</b>	<b>26,906</b>	<b>26,421</b>	<b>20,021</b>	<b>20,132</b>

# DEVELOPMENT WORKLOAD - MONTHLY

CATEGORY	Aug-17	Sep-17	Oct-17	Nov-17	Dec-17	Jan-18	Feb-18	Mar-18	Apr-18	May-18	Jun-18	Jul-18	Aug-18
<b><u>Phone Requests</u></b>													
Maps/Drawings	4	5	6	3	3	6	6	6	3	6	8	4	2
Lateral Permits	-	-	-	-	-	-	-	-	-	-	-	-	-
Policy Questions	6	4	7	8	6	4	12	17	5	9	8	9	10
Development Questions	71	28	39	40	23	55	63	39	44	79	80	61	63
Miscellaneous	3	3	2	3	10	8	7	15	11	17	27	37	24
<b>TOTAL</b>	<b>84</b>	<b>40</b>	<b>54</b>	<b>54</b>	<b>42</b>	<b>73</b>	<b>88</b>	<b>77</b>	<b>63</b>	<b>111</b>	<b>123</b>	<b>111</b>	<b>99</b>
<b><u>Counter Requests</u></b>													
Maps/Drawings	-	1	-	-	-	1	-	-	-	1	1	-	3
Lateral Permits	6	16	4	5	7	11	9	17	12	10	12	9	9
Policy Questions	2	2	2	1	2	-	2	2	-	1	-	2	3
Development Questions	14	8	7	9	9	7	9	15	11	13	12	12	9
Miscellaneous	2	2	3	-	1	1	1	3	-	1	1	2	2
<b>TOTAL</b>	<b>24</b>	<b>29</b>	<b>16</b>	<b>15</b>	<b>19</b>	<b>20</b>	<b>21</b>	<b>37</b>	<b>23</b>	<b>26</b>	<b>26</b>	<b>25</b>	<b>26</b>
<b><u>Initial Request (Referrals)</u></b>	<b>11</b>	<b>14</b>	<b>11</b>	<b>17</b>	<b>5</b>	<b>7</b>	<b>13</b>	<b>20</b>	<b>15</b>	<b>20</b>	<b>13</b>	<b>13</b>	<b>17</b>
<b><u>Connection Permits Issued</u></b>													
Residential Permits	4	2	1	1	5	3	12	19	16	3	3	5	16
Commercial Permits	5	4	2	2	3	5	3	1	3	2	3	5	5
Industrial Permits	-	-	-	-	-	-	-	-	-	-	-	-	-
<b>TOTAL PERMITS</b>	<b>9</b>	<b>6</b>	<b>3</b>	<b>3</b>	<b>8</b>	<b>8</b>	<b>15</b>	<b>20</b>	<b>19</b>	<b>5</b>	<b>6</b>	<b>10</b>	<b>21</b>
Residential Units	4	2	1	1	5	3	12	336	16	3	3	5	16
Commercial Units	6	4	2	2	3	5	3	1	102	174	3	5	8
<b>TOTAL UNITS</b>	<b>10</b>	<b>6</b>	<b>3</b>	<b>3</b>	<b>8</b>	<b>8</b>	<b>15</b>	<b>337</b>	<b>118</b>	<b>177</b>	<b>6</b>	<b>10</b>	<b>24</b>
<b><u>Annexations</u></b>													
Submitted	-	-	-	-	-	-	-	-	-	-	-	1	1
Acreage	-	-	-	-	-	-	-	-	-	-	-	0.60	11.60
<b><u>Plans Reviewed</u></b>													
<b><u>Subdivisions/Sites</u></b>													
First Submittal	5	10	6	2	3	9	19	18	14	4	10	10	18
Second Submittal	7	1	1	1	4	2	5	9	6	8	3	5	8
Third Submittal	2	1	7	2	3	5	4	6	2	2	2	3	3
<b><u>Building/Tenant Improvements</u></b>													
First Submittal	19	15	9	5	10	5	16	14	7	19	18	10	8
Second Submittal	6	5	9	10	3	1	2	9	1	7	6	8	6
Third Submittal	7	3	2	7	5	2	3	3	4	2	3	5	4
<b><u>Miscellaneous Plan Reviews</u></b>	<b>-</b>	<b>-</b>	<b>-</b>	<b>-</b>	<b>-</b>	<b>-</b>	<b>-</b>	<b>-</b>	<b>-</b>	<b>-</b>	<b>-</b>	<b>-</b>	<b>-</b>
<b>TOTAL PLANS REVIEWED</b>	<b>46</b>	<b>35</b>	<b>34</b>	<b>27</b>	<b>28</b>	<b>24</b>	<b>49</b>	<b>59</b>	<b>34</b>	<b>42</b>	<b>42</b>	<b>41</b>	<b>47</b>

# INSPECTION WORKLOAD - MONTHLY

CATEGORY	Aug-17	Sep-17	Oct-17	Nov-17	Dec-17	Jan-18	Feb-18	Mar-18	Apr-18	May-18	Jun-18	Jul-18	Aug-18
<b><u>CONSTRUCTION</u></b>													
Locating Sewers	-	-	1	-	-	-	-	-	-	-	-	-	1
Permit Processing	-	-	-	-	-	-	-	-	-	-	-	-	-
Preconstruction Meetings	2	-	-	1	1	7	7	5	5	7	2	3	1
Inspections - Mains	-	2	-	-	5	-	20	6	2	4	-	2	6
Inspections - Manholes	3	40	72	45	62	41	38	13	16	25	12	-	6
Inspections - Laterals	8	6	2	7	15	23	26	23	17	25	15	7	13
Inspections - Cleanouts	3	4	4	11	10	31	36	24	26	43	7	3	2
Inspections - Review Video	-	-	-	-	-	-	-	1	2	-	17	1	-
Demo - Septic Tanks	-	-	-	-	-	-	-	-	-	-	-	-	-
Demo - Buildings	-	-	-	-	-	-	-	-	-	-	-	1	-
Update Record Drawings	-	-	-	-	-	-	-	-	-	-	-	-	-
<b>TOTAL</b>	<b>16</b>	<b>52</b>	<b>79</b>	<b>64</b>	<b>93</b>	<b>102</b>	<b>127</b>	<b>72</b>	<b>68</b>	<b>104</b>	<b>53</b>	<b>17</b>	<b>29</b>
<b><u>MISCELLANEOUS</u></b>													
Meter Readings	-	-	-	-	-	11	24	-	1	13	-	-	-
Washdown Facility Inspections	-	-	-	-	-	-	-	-	12	-	-	-	-
General Customer Assistance	28	30	31	30	25	26	18	38	11	28	21	40	27
City of Napa Water Discharge	-	-	-	-	-	-	-	-	-	-	-	-	-
<b>TOTAL</b>	<b>28</b>	<b>30</b>	<b>31</b>	<b>30</b>	<b>25</b>	<b>37</b>	<b>42</b>	<b>38</b>	<b>24</b>	<b>41</b>	<b>21</b>	<b>40</b>	<b>27</b>
<b><u>SPECIAL PROJECTS</u></b>	<b>23</b>	<b>36</b>	<b>24</b>	<b>6</b>	<b>1</b>	<b>7</b>	<b>0</b>	<b>5</b>	<b>6</b>	<b>0</b>	<b>9</b>	<b>21</b>	<b>23</b>

# POLLUTION PREVENTION WORKLOAD - MONTHLY

CATEGORY	Aug-17	Sep-17	Oct-17	Nov-17	Dec-17	Jan-18	Feb-18	Mar-18	Apr-18	May-18	Jun-18	Jul-18	Aug-18
<b><u>Outreach Activities</u></b>													
Plant Tours Conducted	1	9	1	2	0	3	0	1	5	5	3	1	3
Presentations Made	0	3	0	0	0	0	0	2	1	5	0	1	0
<b>Total Outreach Activities</b>	1	12	1	2	-	3	-	3	6	10	3	2	3
<b><u>Inspections Conducted</u></b>													
Food Service Facilities	-	-	-	-	-	6	22	64	51	10	-	-	-
Auto Body & Car Wash	-	-	-	-	-	-	-	-	-	-	-	-	-
Other	-	-	-	1	-	-	-	-	-	-	-	-	-
<b>Total Inspections</b>	-	-	-	1	-	6	22	64	51	10	-	-	-
<b><u>Compliance Issues</u></b>													
NOVs Issued	-	1	2	-	1	-	3	2	2	1	3	-	3
NOEs Issued	1	1	1	-	1	1	3	-	1	-	1	-	1
Non-Compliant-FOG	-	-	-	-	1	-	-	-	-	-	-	-	-
<b>Total Compliance Issues</b>	1	2	3	-	3	1	6	2	3	1	4	-	4
<b><u>Pollution Prevention</u></b>													
Clothes Washer Rebates	1	19	-	-	-	25	14	21	-	8	21	-	-
Toilet Retrofit Rebates	6	3	-	-	-	-	-	-	-	-	-	-	-
Pharmaceuticals Diverted (in lbs)	-	-	59	63	-	35	-	82	66	-	74	90	-

# RECYCLED WATER DELIVERIES - MONTHLY

	Acres	Aug-17	Sep-17	Oct-17	Nov-17	Dec-17	Jan-18	Feb-18	Mar-18	Apr-18	May-18	Jun-18	Jul-18	Aug-18
<b>MONTHLY (MG)</b>														
<b>Water Sold</b>														
Golf Courses	405.0	58.595	53.035	26.903	5.504	6.253	0.001	6.152	2.748	3.320	52.726	68.294	64.047	57.269
Cemeteries	57.1	1.116	0.634	0.833	0.193	0.003	-	0.005	0.154	0.385	3.183	3.643	4.903	4.920
Parks	18.5	0.866	0.650	0.333	0.020	-	-	-	-	-	0.823	0.949	1.051	0.846
Schools	21.0	2.178	1.613	1.485	0.195	0.019	-	0.255	0.198	0.242	1.727	2.151	2.122	2.044
Commerical	167.6	17.399	15.227	13.665	4.387	1.402	-	1.835	1.765	3.169	9.893	12.414	15.863	19.184
Vineyards	564.0	30.814	18.019	16.506	1.766	0.225	-	5.695	21.988	8.001	6.377	21.260	43.468	32.727
Trucked Water	175.0	0.602	0.274	0.197	0.030	0.014	-	0.017	0.029	0.880	0.143	0.737	0.666	0.637
<b>Subtotal Sales</b>	<b>1,408.2</b>	<b>111.571</b>	<b>89.451</b>	<b>59.922</b>	<b>12.095</b>	<b>7.916</b>	<b>0.001</b>	<b>13.960</b>	<b>26.881</b>	<b>15.996</b>	<b>74.872</b>	<b>109.448</b>	<b>132.120</b>	<b>117.628</b>
<b>District Use</b>														
Jameson	330.0	18.483	20.751	-	-	-	-	0.077	-	-	-	-	-	0.163
Somky	213.0	13.426	19.372	10.364	-	-	-	-	-	-	11.710	13.263	0.208	3.226
Fagundes/Airport	50.5	-	-	-	-	-	-	-	-	-	-	-	-	-
<b>Subtotal District</b>	<b>593.5</b>	<b>31.910</b>	<b>40.122</b>	<b>10.364</b>	<b>-</b>	<b>-</b>	<b>-</b>	<b>0.077</b>	<b>-</b>	<b>-</b>	<b>11.710</b>	<b>13.263</b>	<b>0.208</b>	<b>3.389</b>
<b>TOTAL DELIVERED</b>	<b>2,001.7</b>	<b>143.481</b>	<b>129.574</b>	<b>70.286</b>	<b>12.095</b>	<b>7.916</b>	<b>0.001</b>	<b>14.037</b>	<b>26.881</b>	<b>15.996</b>	<b>86.582</b>	<b>122.711</b>	<b>132.327</b>	<b>121.016</b>
<b>ANNUAL (AF)</b>														
<b>Water Sold</b>														
Golf Courses	405.0	1,033	1,044	1,048	1,045	1,064	1,064	1,083	1,091	1,093	1,091	1,097	1,067	1,063
Cemeteries	57.1	15	13	15	16	16	16	16	16	17	25	34	46	58
Parks	18.5	13	13	13	14	14	14	14	14	14	14	14	14	14
Schools	21.0	33	33	36	36	36	36	37	37	38	39	38	37	37
Commerical	167.6	309	310	322	325	328	324	329	333	335	318	303	298	303
Vineyards	564.0	308	310	342	336	336	336	353	420	423	427	460	534	540
Trucked Water	175.0	5	5	6	6	5	5	5	5	8	8	10	11	11
<b>Subtotal Sales</b>	<b>1,408.2</b>	<b>1,717</b>	<b>1,728</b>	<b>1,782</b>	<b>1,778</b>	<b>1,799</b>	<b>1,794</b>	<b>1,835</b>	<b>1,916</b>	<b>1,928</b>	<b>1,923</b>	<b>1,955</b>	<b>2,008</b>	<b>2,026</b>
<b>District Use</b>														
Jameson	330.0	183	182	143	143	143	143	143	143	143	143	143	121	64
Somky	213.0	230	222	223	223	223	223	223	223	223	240	244	210	178
Fagundes/Airport	50.5	-	-	-	-	-	-	-	-	-	-	-	-	-
<b>Subtotal District</b>	<b>593.5</b>	<b>413</b>	<b>404</b>	<b>366</b>	<b>366</b>	<b>366</b>	<b>366</b>	<b>366</b>	<b>366</b>	<b>366</b>	<b>383</b>	<b>387</b>	<b>330</b>	<b>243</b>
<b>TOTAL DELIVERED</b>	<b>2,001.7</b>	<b>2,130</b>	<b>2,132</b>	<b>2,148</b>	<b>2,144</b>	<b>2,165</b>	<b>2,160</b>	<b>2,202</b>	<b>2,282</b>	<b>2,294</b>	<b>2,306</b>	<b>2,343</b>	<b>2,338</b>	<b>2,269</b>



# BIOSOLIDS HANDLING - MONTHLY

Site	Aug-17	Sep-17	Oct-17	Nov-17	Dec-17	Jan-18	Feb-18	Mar-18	Apr-18	May-18	Jun-18	Jul-18	Aug-18
<u>Land Applied by NSD</u>													
Somky													
Airport/Fagundes													
Jameson Canyon	153	184	65	68	11	8	-	-	-	-	232	229	184
Subtotal by NSD	153	184	65	68	11	8	-	-	-	-	232	229	184
<u>Land Applied by Contractor</u>													
Somky													
Airport/Fagundes													
Jameson Canyon													
Subtotal by Contractor	-	-	-	-	-	-	-	-	-	-	-	-	-
<b>Total Land Applied</b>	<b>153</b>	<b>184</b>	<b>65</b>	<b>68</b>	<b>11</b>	<b>8</b>	<b>-</b>	<b>-</b>	<b>-</b>	<b>-</b>	<b>232</b>	<b>229</b>	<b>184</b>
<b>Off Site (Contractor)</b>													
<b>Total (tons)</b>	<b>153</b>	<b>184</b>	<b>65</b>	<b>68</b>	<b>11</b>	<b>8</b>	<b>-</b>	<b>-</b>	<b>-</b>	<b>-</b>	<b>232</b>	<b>229</b>	<b>184</b>

**COLLECTION SYSTEM MAINTENANCE - MONTHLY**

<b>CATEGORY</b>	<b>Aug-17</b>	<b>Sep-17</b>	<b>Oct-17</b>	<b>Nov-17</b>	<b>Dec-17</b>	<b>Jan-18</b>	<b>Feb-18</b>	<b>Mar-18</b>	<b>Apr-18</b>	<b>May-18</b>	<b>Jun-18</b>	<b>Jul-18</b>	<b>Aug-18</b>
<b><u>Plugups</u></b>													
<b>Total Calls</b>	36	42	54	63	48	62	49	67	40	44	25	37	39
Business Hours	27	26	33	38	27	40	35	53	23	32	16	24	28
After Hours	9	16	21	25	21	22	14	16	17	12	9	9	11
District's	10	17	25	20	19	22	16	15	10	16	6	8	16
Property Owner's	26	25	29	43	29	40	33	40	30	28	19	29	23
Plugged Main Lines								1	1	1		2	1
Run Lateral w/Eel	191	87	103	70	101	86	98	190	120	142	173	168	165
<b><u>Cleaning (feet of sewer)</u></b>													
Vactor #1	17,179	38,849	7,417	21,500	33,612	55,782	33,391	51,027	36,507	47,937	41,767	48,278	69,132
Vactor #2	58,712	35,140	50,621	17,254	8,642	50,441	41,842	51,666	40,119	2,708	2,065	7,290	1,072
Hydro					1,251								
Rodder						765							
<b>Total (feet)</b>	<b>75,891</b>	<b>73,989</b>	<b>58,038</b>	<b>38,754</b>	<b>43,505</b>	<b>106,988</b>	<b>75,233</b>	<b>102,693</b>	<b>76,625</b>	<b>50,645</b>	<b>43,832</b>	<b>55,568</b>	<b>70,204</b>
<b><u>Cleaning Days</u></b>													
Vactor #1	8	14	3	10	14	18	11	15	14	20	19	16	21
Vactor #2	23	11	18	10	5	14	13	18	13	1	1	3	1
Hydro													
Rodder						1							
<b><u>Feet/day</u></b>													
Vactor #1	2,450	2,950	2,750	1,950	2,300	3,250	3,150	3,100	2,850	2,400	2,200	2,900	3,200
Vactor #2	2,150	2,750	2,450	2,150	2,400	3,100	3,050	3,400	2,600	2,400	2,200	3,000	3,300
Vactor #2	2,550	3,200	2,800	1,750	1,750	3,600	3,200	2,850	3,100	2,700	2,050	2,450	1,050
Hydro													
Rodder						750							
<b><u>Video Inspections</u></b>													
Mains (feet)	15,789			10,767	6,320	17,644	12,878	21,714	18,530	26,140	18,248	18,188	22,781
Laterals (each)	246	170	184	172	186	114	122	211	179	197	223	266	234
<b><u>Construction (each)</u></b>													
Cleanouts	17	7	4	6	11	15	16	8	6	10	8	27	25
Laterals	9	1	1	1	1	1	4	1	10	24	10	9	8
Mains					1		1						
Manholes									1	2			2
Other	2		57	79					3				
<b><u>USA Markings</u></b>													
Regular (w/in 2 days)	264	233	252	363	210	281	277	266	280	282	277	397	296
Emergency (w/in 2 hours)	3	7	33	9	13	15	3	18	31	37	16	8	12

### WASTEWATER PLANT OPERATIONS DATA - MONTHLY

CATEGORY	Units	Aug-17	Sep-17	Oct-17	Nov-17	Dec-17	Jan-18	Feb-18	Mar-18	Apr-18	May-18	Jun-18	Jul-18	Aug-18
<b>FLOWES</b>		<b>31</b>	<b>30</b>	<b>31</b>	<b>30</b>	<b>31</b>	<b>31</b>	<b>28</b>	<b>31</b>	<b>30</b>	<b>31</b>	<b>30</b>	<b>31</b>	<b>31</b>
Influent	MG	199.7	191.6	183.0	205.5	186.3	254.0	189.3	347.0	321.5	216.7	191.0	189.8	186.1
Average Day	MGD	6.4	6.4	5.9	6.9	6.0	8.2	6.8	11.2	10.7	7.0	6.4	6.1	6.0
Maximum Day	Date	21-Aug	18-Sep	11-Oct	17-Nov	1-Dec	10-Jan	1-Feb	23-Mar	8-Apr	1-May	4-Jun	1-Jul	19-Aug
Maximum Day Flow	MG	6.7	6.7	6.4	14.0	6.7	16.7	7.6	22.2	29.7	7.7	6.6	6.3	6.3
Minimum Day	Date	30-Aug	4-Sep	1-Oct	1-Nov	26-Dec	2-Jan	24-Feb	1-Mar	30-Apr	31-May	27-Jun	6-Jul	22-Aug
Minimum Day Flow	MG	6.3	6.2	5.2	5.6	5.3	5.7	6.3	6.4	7.7	6.7	6.1	6.0	5.5
Effluent	MG	158.0	142.9	80.0	314.7	169.1	302.3	176.2	415.7	342.1	95.8	134.0	133.0	124.4
River Discharge	MG	-	-	-	305.8	163.8	302.0	164.6	398.9	319.8	-	-	-	-
Recycled Flow	MG	158.0	142.9	73.0	8.9	5.3	0.3	14.4	23.0	20.2	95.8	134.0	133.0	124.4
<b>BIOSOLIDS</b>	<b>Tons</b>	<b>952</b>	<b>703</b>	<b>612</b>	<b>731</b>	<b>617</b>	<b>713</b>	<b>770</b>	<b>836</b>	<b>605</b>	<b>719</b>	<b>760</b>	<b>798</b>	<b>775</b>
Wet Tons Generated from Pond	Tons													
Wet Tons Generated from Plant	Tons	952	703	612	731	617	713	770	836	605	719	760	798	775
% Solids Liquid	%													
% Solids Cake	%													
% Solids Land Application	%													
Wet Tons Hauled Offsite	Tons													
<b>POLYMER USE</b>	<b>Gallons</b>	<b>1,987</b>	<b>3,927</b>	<b>3,051</b>	<b>15,506</b>	<b>1,939</b>	<b>3,839</b>	<b>3,931</b>	<b>3,764</b>	<b>2,365</b>	<b>3,816</b>	<b>2,636</b>	<b>1,732</b>	<b>1,936</b>
Pond Pre-Flocculators	Gallons	-	-	-	11,711		2,460	-	-	282	-	-	-	-
Flocculator Polymer 1	Gallons													
Flocculator Polymer 2	Gallons	-	115	-	-	250	589	253	1,033	452	-	-	-	-
Filter Polymer 1	Gallons	914	3,077	2,358	830	728		3,019	1,963	1,015	2,850	1,677	824	1,361
Filter Polymer 2	Gallons					151	790			-	-	-	-	-
Belt Presses	Gallons	1,073	735	693	784	810	13	659	769	617	966	959	908	575
<b>ENERGY</b>														
Total Electricity Used	MWH	849	870	747	719	658	673	684	759	777	748	813	775	797
Purchased from PGE	MWH	469	476	367	433	287	311	270	350	357	281	270	279	360
Produced from Co-Gen	MWH	253	248	251	236	273	288	286	269	245	282	266	286	258
Percent Produced	%	30%	29%	34%	33%	41%	43%	42%	36%	32%	38%	33%	37%	32%
Purchased from Solar	MWH	172	153	140	87	98	74	128	140	175	200	227	210	179
Percent Produced		20%	18%	19%	12%	15%	11%	19%	18%	22%	27%	28%	27%	22%
Purchased Natural Gas	Therms	56	60	19	99	91	2,404	1,214	166	24	22	63	116	68
Methane Flared Off	KSCF	156	164	5	82	192	523	733	79	43	110	308	344	259
<b>Stand By Calls</b>	<b>#</b>	<b>44</b>	<b>78</b>	<b>36</b>	<b>47</b>	<b>66</b>	<b>23</b>	<b>43</b>	<b>40</b>	<b>36</b>	<b>135</b>	<b>52</b>	<b>57</b>	<b>71</b>
Violations	#	-	-	-	-	-	-	-	-	-	-	-	-	-

# WASTEWATER PLANT MAINTENANCE and LABORATORY DATA - MONTHLY

CATEGORY	Aug-17	Sep-17	Oct-17	Nov-17	Dec-17	Jan-18	Feb-18	Mar-18	Apr-18	May-18	Jun-18	Jul-18	Aug-18
<b><u>Scheduled</u></b>													
Old	28	17	33	33	61	39	27	39	12	6	8	9	13
New	78	78	86	82	56	117	59	82	95	89	101	95	87
Completed	89	62	86	54	78	129	41	109	101	87	100	91	69
<b>New Balance</b>	<b>17</b>	<b>33</b>	<b>33</b>	<b>61</b>	<b>39</b>	<b>27</b>	<b>39</b>	<b>12</b>	<b>6</b>	<b>8</b>	<b>9</b>	<b>13</b>	<b>31</b>
<b><u>Unscheduled</u></b>													
Old	45	38	43	34	44	40	35	38	30	36	30	27	29
New	40	32	21	37	19	18	16	24	25	14	21	23	30
Completed	47	27	30	27	23	23	13	32	19	20	24	21	21
<b>New Balance</b>	<b>38</b>	<b>43</b>	<b>34</b>	<b>44</b>	<b>40</b>	<b>35</b>	<b>38</b>	<b>30</b>	<b>36</b>	<b>30</b>	<b>27</b>	<b>29</b>	<b>38</b>
<b><u>Total Work Orders</u></b>													
Old	73	55	76	66	105	79	62	77	42	42	38	36	42
New	118	110	107	119	75	135	75	106	120	103	122	118	117
Completed	132	89	117	81	101	152	60	141	121	107	125	112	90
<b>New Balance</b>	<b>55</b>	<b>76</b>	<b>67</b>	<b>105</b>	<b>79</b>	<b>62</b>	<b>77</b>	<b>42</b>	<b>42</b>	<b>38</b>	<b>36</b>	<b>42</b>	<b>69</b>
<b><u>LAB ANALYSES</u></b>													
<b>Sample Type</b>													
Regulatory	193	194	156	178	163	123	190	208	200	188	146	139	132
Process Control	1,104	1,091	1,137	1,220	1,139	1,071	1,080	1,103	1,103	796	871	917	927
Special Request	-	7	8	4	6	4	2	4	1	6	34	2	-
Quality Control/Assurance	549	428	420	1,110	874	692	794	741	936	489	500	483	401
<b>TOTAL</b>	<b>1,846</b>	<b>1,720</b>	<b>1,721</b>	<b>2,512</b>	<b>2,182</b>	<b>1,890</b>	<b>2,066</b>	<b>2,056</b>	<b>2,240</b>	<b>1,479</b>	<b>1,551</b>	<b>1,541</b>	<b>1,460</b>

**Summary of NSD Capital Project Status  
through 08-31-18**

Proj #	Description	FY 18/19 Budget	FY 17/18 Carryovers	Adj.	Final FY 18/19 Budget	Encumbrance	Costs Paid to Date	Budget Remaining	% Budget Expended
	<b><u>COLLECTION SYSTEM</u></b>								
13701	Main Line Sewer Rehabilitation	95,000			95,000	-	334	94,666	0%
13702	Manhole Raising/Rehabilitation	428,500			428,500	-	2,870	425,630	1%
13703	Lateral Replacement/Rehabilitation	77,100			77,100	4,693	15,500	56,907	20%
13704	Cleanouts Installation/Rehabilitation	93,200			93,200	4,040	20,528	68,632	22%
13705	Inflow & Infiltration (I&I) Reduction Program	214,200			214,200	-	9,230	204,970	4%
14703	Browns Valley Rd & First St	5,075,000			5,075,000	-	114,550	4,960,450	2%
18702	Collection System Asset Management Software	275,000			275,000	-	3,808	271,192	1%
18705	Sewer System Inflow/Infiltration 2018	2,600,000			2,600,000	-	29,667	2,570,333	1%
18706	Sewer System Inflow/Infiltration 2019	2,321,100			2,321,100	-	6,422	2,314,678	0%
19701	66-inch Trunk Rehabilitation (Kaiser to IPS)	1,400,000			1,400,000	-	-	1,400,000	-
19702	72-inch Trunk Construction (Kaiser to IPS)	1,000,000		(1,000,000)	-	-	-	-	-
19703	2020 Collection System Rehabilitation	20,000			20,000	-	-	20,000	-
19727	Collection System Master Plan	-		1,000,000	1,000,000	-	9,347	990,653	1%
	<b><u>COLLECTION SYSTEM - EQUIPMENT</u></b>								
19704	Vehicle 180 - Ford F150 - USA Truck	35,400			35,400	-	-	35,400	-
	<b><u>LIFT STATIONS</u></b>								
17711	West Napa PS - Rehab	5,200,000			5,200,000	-	3,240	5,196,760	0%
19705	Stonecrest PS Pump Rebuild	45,000			45,000	-	-	45,000	-
	<b><u>TREATMENT</u></b>								
13745	Pond 1 Dredge	600,000			600,000	-	1,615	598,385	0%
	<b><u>TREATMENT - EQUIPMENT</u></b>								
16712	Main - Primary Clarifier Mech/Struct Rehabilitation	150,000			150,000	-	802	149,198	1%
17713	Secondary PS VFD Rplcmnt (3)	57,400			57,400	-	-	57,400	-
18720	Neuros Blowers Rebuild	64,300			64,300	-	-	64,300	-
18740	Main - Chemical Storage Building Piping Repair	250,000			250,000	-	2,326	247,674	1%
19706	WWTP MP - 3W System Improvements Phase 2	300,000			300,000	-	-	300,000	-
19707	Portable Pumps 10-inch (2)	172,100			172,100	-	-	172,100	-
19708	Main - Rotork Actuator Replacement	95,000			95,000	-	-	95,000	-
19709	Main - Polymer Tank (3) Replacement	10,000			10,000	-	-	10,000	-
19710	Main - 12kV Redundant Line	120,000			120,000	-	-	120,000	-

**Summary of NSD Capital Project Status  
through 08-31-18**

<b>Proj #</b>	<b>Description</b>	<b>FY 18/19 Budget</b>	<b>FY 17/18 Carryovers</b>	<b>Adj.</b>	<b>Final FY 18/19 Budget</b>	<b>Encumbrance</b>	<b>Costs Paid to Date</b>	<b>Budget Remaining</b>	<b>% Budget Expended</b>
19711	Main - CCB Coating - E&W Channels	50,000			50,000	-	-	50,000	-
19712	Main - Utility Generator Power Transition	75,000			75,000	-	-	75,000	-
19713	Main - Cogen Hot Water to FOG Pad	50,000			50,000	-	-	50,000	-
19714	Main - Ventilation System Expansion Boots	50,000			50,000	-	-	50,000	-
19715	Main - ARV Replacement	30,000			30,000	-	-	30,000	-
19716	Main - P4PS Pump #3 Rebuild	40,000			40,000	-	-	40,000	-
	<b><u>TREATMENT - STRUCTURES</u></b>								
17726	Headworks Equipment Rehab/Replacment	1,900,000			1,900,000	-	9,786	1,890,214	1%
18736	Treatment Plant Project 2018	2,100,000			2,100,000	-	38,952	2,061,048	2%
19717	WWTP MP - Pond Transfer Structures 2 to 3	5,000			5,000	-	-	5,000	-
	<b><u>SCADA</u></b>								
19718	SCADA MP Phase 5 Security Study	250,000			250,000	-	-	250,000	-
	<b><u>RECYCLING - DISTRICT</u></b>								
18731	Coombsville Truck Fill Station	375,000			375,000	-	851	374,149	0%
19719	24-inch Valve Replacement - Kirkland Line	5,000			5,000	-	-	5,000	-
19720	Jameson PS VFD	68,900			68,900	-	-	68,900	-
19721	Soscol RW Pump Replacement/Rehab	150,000			150,000	-	-	150,000	-
19722	Vehicle 723/720 - Attachments/Implements	28,700			28,700	-	-	28,700	-
	<b><u>RECYCLING - EXPANSION</u></b>								
13727	North Bay Wate Reuse Project	150,000			150,000	-	-	150,000	-
	<b><u>OTHER</u></b>								
13729	Development Technical Support	248,300			248,300	-	53,409	194,891	22%
19723	AV System Replacement - Conference Rooms	20,000			20,000	-	-	20,000	-
19724	Fence Repair - District Wide	25,000			25,000	-	-	25,000	-
19725	Vehicle 011 - CSET Trailer	23,700			23,700	-	-	23,700	-
19726	Vehicle 607 - Electrical Hybrid Vehicle	42,800			42,800	-	1,633	41,167	4%
<b>GRAND TOTAL ALL PROJECTS</b>		<b>\$26,385,700</b>	<b>-</b>	<b>-</b>	<b>\$26,385,700</b>	<b>\$8,732</b>	<b>\$324,870</b>	<b>\$26,052,097</b>	<b>1%</b>