



Napa Sanitation District

General Manager's Report

for

July, 2018

Contents:

- a. Transmittal Memo
- b. Budget Status and Cash Summary
- c. Key Information Graphs – Fund Balances, Treatment Plant and Collection
- d. Fund Balances
- e. Development Processing
- f. Construction Inspection
- g. Pollution Prevention
- h. Recycled Water Deliveries
- i. Biosolids Handling
- j. Collection System Maintenance
- k. Treatment Plant Operations
- l. Treatment Plant Maintenance & Laboratory
- m. Capital Project Expenditure Summary



NAPA SANITATION DISTRICT

General Manager's Report

DATE: September 5, 2018

FROM: Timothy B. Healy, General Manager

SUBJECT: General Manager's Report for July 2018

REGULATORY COMPLIANCE:

Collection System Compliance:	0 Category 1 SSO's, 0 Category 2 SSO's, and 0 Category 3 SSO's
NPDES Permit (WWTP) Compliance:	Full compliance with all regulations
Air Quality Compliance:	Full compliance with all regulations
Recycled Water Compliance:	Full compliance with all regulations
Biosolids Compliance:	Full compliance with all regulations
Significant Comments:	None

FISCAL STATUS:

Period Covered:	July 1, 2018 – July 31, 2018
Percent Fiscal Year:	8.3%
Operating Expenditures to date:	19.7%
Historical Expenditures to date:	18.1%
Significant Comments:	None

PERSONNEL:

Significant events for the month of July 2018 in the Human Resources Department:

New Hires:	None
Separations:	None
Promotions:	None
Recruitment Activities:	Began recruitment for Operator-in-Training/Operator I
Injuries:	Strained knee – no lost time

Summaries of Operational Highlights are on following pages.

COLLECTIONS:

Significant events for the month of July 2018 in Collection System Maintenance include:

- The District had 0 Category 1 Sanitary Sewer Overflows (SSO's), 0 Category 2 SSO's and 0 Category 3 SSO's during the month. (A Category 1 is defined as an SSO that reached a drainage channel and/or surface water or; an SSO that reached a storm drainpipe that was not fully recovered and returned to the sanitary sewer system. A Category 2 is defined as an SSO that is equal to or greater than 1,000 gallons that did not reach a surface water. A Category 3 is defined as an SSO that is less than 1,000 gallons that did not reach a surface water. These are usually minor overflows of less than 10 gallons from cleanouts on District laterals that can be cleaned up by the crews.)
- The above No Spill for the second month in a row is the first in over 12 years.
- The repair crew installed 18 cleanouts and repaired 6 cleanouts. They also repaired 4 laterals and installed 5 lateral liners. Additionally, the service response/programs crew completed 113 work orders in support of the grease and odor control program, responded to 37 customer requests for service (9 were NSD problem) and closed out 333 mark and locate request tickets.
- The preventative maintenance crews ran work orders on 168 laterals, cleaned approximately 56,592 feet of main line and CCTV inspected 59 laterals. In addition, the CCTV truck televised 36,319 feet of mainline.

TREATMENT PLANT:

Significant events for the month of July 2018 in the Treatment Plant Department:

Plant Operations:

- For July 2018, the plant's influent flow was 189.8 MG as compared to last year flow for July 2017 of 201.5 MG
- There was no Flow to the Napa River for July 2018.
- The production of recycle quality occurred for 31 days during July 2018 with a total distributed flow of 144.34 MG.
- There was 0.01" rainfall for July 2018 as compared to 0.0" rainfall for July 2017.
- Pond 4 end of the month recorded level reading was 23.00" as compared to July 2017 of 16.35". Total remaining pond capacity for July 2018 was 63.7% as compared to July 2017 remaining capacity of 61.1%.

Power Consumption and Production:

- This July power consumption purchased from PG&E was 279 MWH in comparison to July 2017 purchase of 412 MWH
- Cogeneration unit ran 743 of 744 hours for the month – 99.87% uptime, averaging 380.39 Kw, producing 285 MWH of energy.
- Solar generation in July was 227 MWH, compared to 200 MWH in June.

Maintenance:

Significant events for the month of July 2018:

Process Maintenance

- Cogeneration unit monthly emission test - in compliance with BAAQMD permit
- Replaced lower RTD on Flare
- Digester recirc pump #2/replaced discharge valve
- Replaced H2S sensor West Napa north wet well
- Installed I-Net radio at Stonecrest
- Installed new packing on DAF Clarifier flow control valve
- Poly Pump/BFP #1 replaced VFD
- Replaced VFD for Primary Clarifier #2 exhaust fan
- Changed Gas Compressor discharge flex coupling
- Filtering of diesel fuel storage units
- Installed new HOA switches on all three BFP drives

Projects

- Installed low flow switches on primary exhaust fans
- Installed recirculation system in the Marsh

Standby Power

- Plant generators operational testing only
- Riverpark, Stonecrest, West Napa operational testing only

Influent Pumps

- All pumps operational

Laboratory:

Monthly **Influent** monitoring of all parameters occurred at the required frequencies. The following were notable sampling events:

- July 3, 2018: Metals, Cyanide, Mercury

RECYCLING:

Significant events in the Recycling Department for July 2018 include:

- Recycled water delivered for the month of July 2018 (132.327million gallons), as compared to July 2017 (133.851 million gallons) is slightly lower due to district use.

Recycled water sales increased by 17.055 million gallons for the month of July 2018 as compared to July 2017. Delivered recycled water volume represents the sum of all use site flow meter consumption values.

- Staff approved one connection in the MST area, one connection in the LCWD area, and one connection in Napa Valley Commons Business Park.
- Staff continued land application of biosolids on Jameson Reuse Site for the reporting period.

POLLUTION PREVENTION:

Significant events in the Pollution Prevention and Outreach Division July 2018 include:

- There was one tour of the treatment plant given to a group of residents.
- NapaSan staff conducted a Best Management Practices training presentation at Napa State Hospital's new kitchen facility.
- In July, 90 pounds of pharmaceuticals were collected at Family Drug in Napa for destruction. The total amount of unneeded medications collected since the drug takeback program began in September 2010 is 21,271.2 pounds.
- There were no ESME Washer Rebates issued this month.

ENGINEERING / CAPITAL PROJECTS / DEVELOPMENT:

Significant events occurring in the Engineering Division for July 2018 include:

- Construction bids were opened for the Headworks Equipment Replacement Project.
- Staff continued receiving deliveries of floating reservoir covers for the Recycled Water Reservoir Improvements Project.
- Contractor began construction of the 2017 Collection System Rehabilitation Project Pavement Restoration.
- Contractor continued construction of the 2018 Collection System Rehabilitation Project.
- Staff continued design of the 2019 Collection System Rehabilitation Project.
- Consultant/Contractor continued condition assessment phase for the 66-inch Trunk Sewer Rehabilitation Project.
- Staff opened bids for the 2018 Manhole Adjustment Project Phase VIII.
- Consultant continued design of the Browns Valley Trunk Project.
- Consultant continued design of the West Napa Pump Station Project.
- Consultant continued the preliminary design study for the Pond 1 Dredge Project.
- Consultant and Staff continued work on Phase 1A and Phase 1B of the Asset Management Program.
- Contractor continued construction of the 2018 Treatment Plant Improvement Project.

- Staff and consultant started design of the 2019 Treatment Plant Improvement Project.
- Staff conducted interviews and selected a consultant for the Collection System Master Plan.
- Staff reviewed 41 sets of development plans and deemed 21 sets of plans complete. The approved plans consisted of 2 recycled water laterals, 14 tenant improvements, 1 residential demolition, 3 residential dwellings, and 1 residential lateral.

Budget Status & Cash Summary - July 1, 2018 - July 31, 2018 (8.3% of the year)

<i>Expenditures</i>	FY 18/19 Budget	Encumbrances	Expenditures to date	Committed to date	Remaining Balance	Percent Committed
Operating						
Salaries & Benefits	\$9,961,350	\$3,419	\$597,725	\$601,143	\$9,360,207	6.0%
Services & Supplies	\$6,003,100	1,222,263	375,459	1,597,723	4,405,377	26.6%
Taxes	29,150	-	-	-	29,150	0.0%
Debt Service	4,593,800	-	3,618,013	3,618,013	975,788 (1)	78.8%
Intrafund Transfers	8,900,000	-	-	-	8,900,000	0.0%
Total Operating:	\$29,487,400	\$1,225,682	\$4,591,197	\$5,816,878	\$23,670,522	(2) 19.7%
Capital						
Bldgs/Improvements & Equip	\$26,385,700	\$33,603	\$66,093	\$99,696	\$26,286,004 (3)	0.4%
Intrafund Transfers	7,250,000	-	-	-	7,250,000	0.0%
Total Capital :	\$33,635,700	\$33,603	\$66,093	\$99,696	\$33,536,004	0.3%
Grand Total Expenditures:	\$63,123,100	\$1,259,284	\$4,657,290	\$5,916,574	\$57,206,526	9.4%

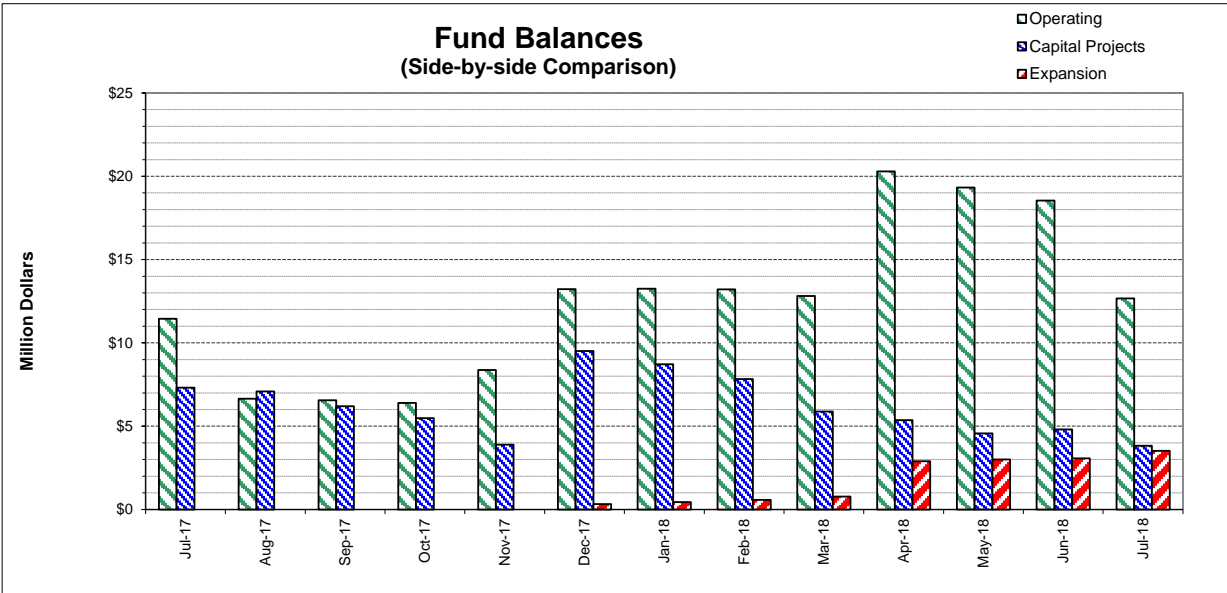
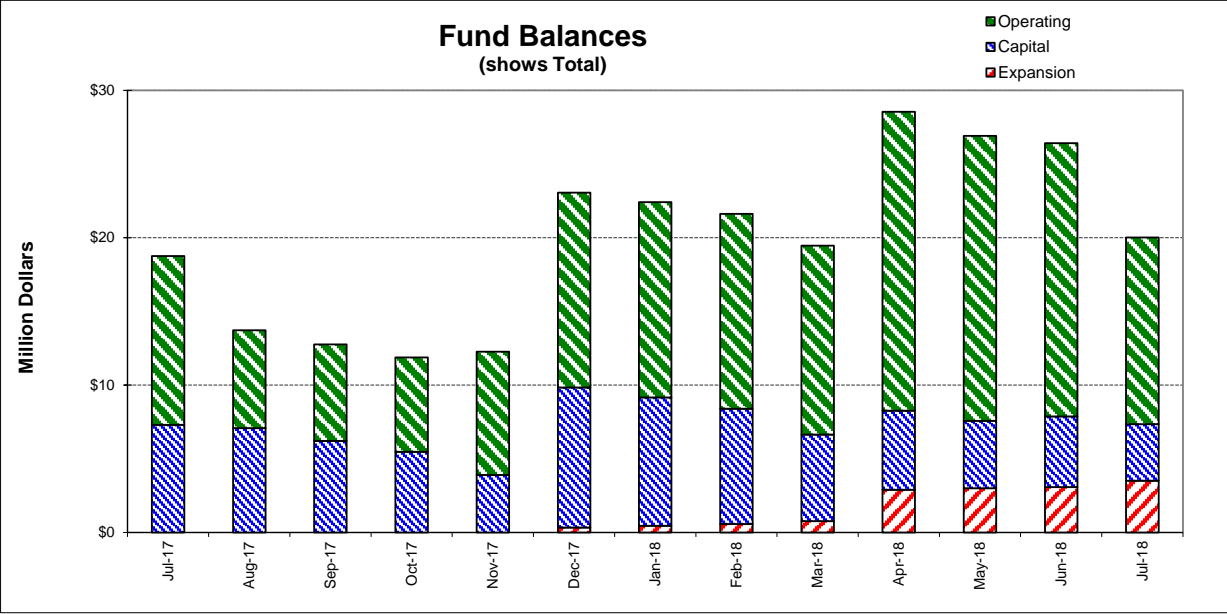
<i>Revenues</i>	FY 18/19 Budget	Encumbrances	Revenues to date	Revenues posted to date	Unposted Revenue	Percent Posted
Operating						
Use of Money/Property	\$1,036,000		\$187,889	\$187,889	\$848,111	18.1%
Intergovernmental	\$0		\$0	-	-	N/A
Charges for Services	29,571,800		229,289	229,289	29,342,511	0.8%
Miscellaneous Revenues	63,000		291	291	62,709	0.5%
Donations/Contributions (Capital Labor)	-		-	-	- (4)	N/A
Total Operating:	\$30,670,800		\$417,469	\$417,469	\$30,253,331	1.4%
Capital						
Use of Money/Property	\$0		\$0	\$0	\$0	N/A
Capacity Charges	4,614,600		468,212	468,212	4,146,388	10.1%
Intergovernmental	375,000		-	-	375,000	0.0%
Bond/Loan Proceeds	9,075,000		-	-	9,075,000	0.0%
Sale of Assets	25,000		-	-	25,000	N/A
Miscellaneous Revenues	5,000		-	-	5,000	N/A
Intrafund Transfers	16,150,000		-	-	16,150,000	0.0%
Total Capital:	\$30,244,600		\$468,212	\$468,212	\$29,776,388	1.5%
Grand Total Revenue:	\$60,915,400		\$885,681	\$885,681	\$60,029,719	1.5%

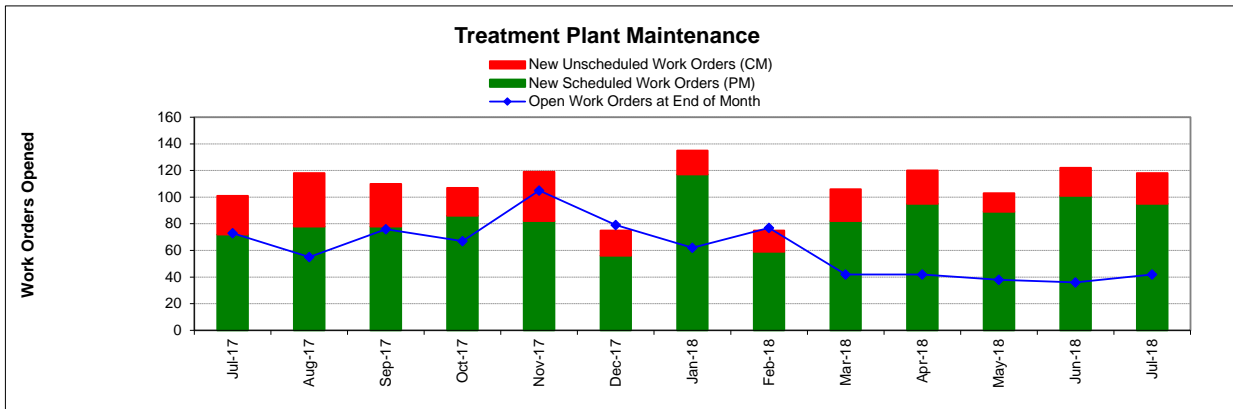
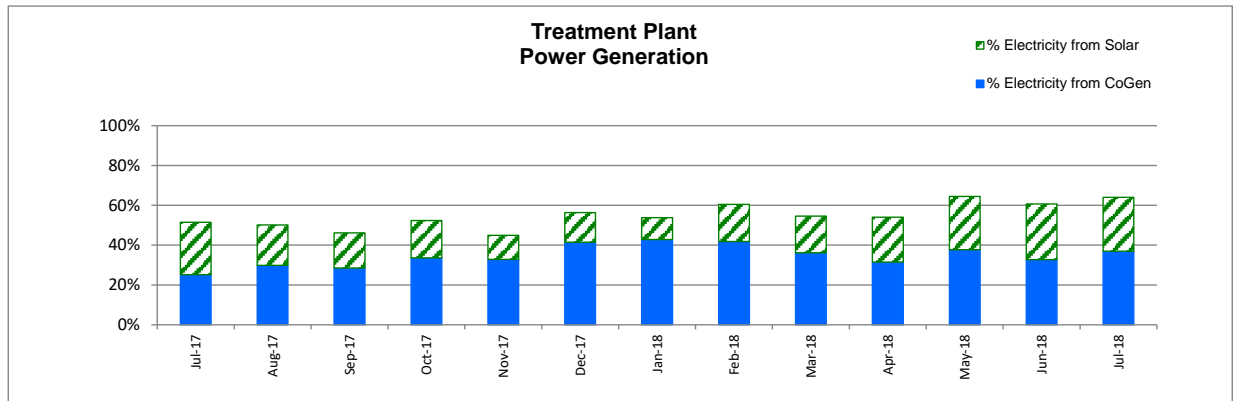
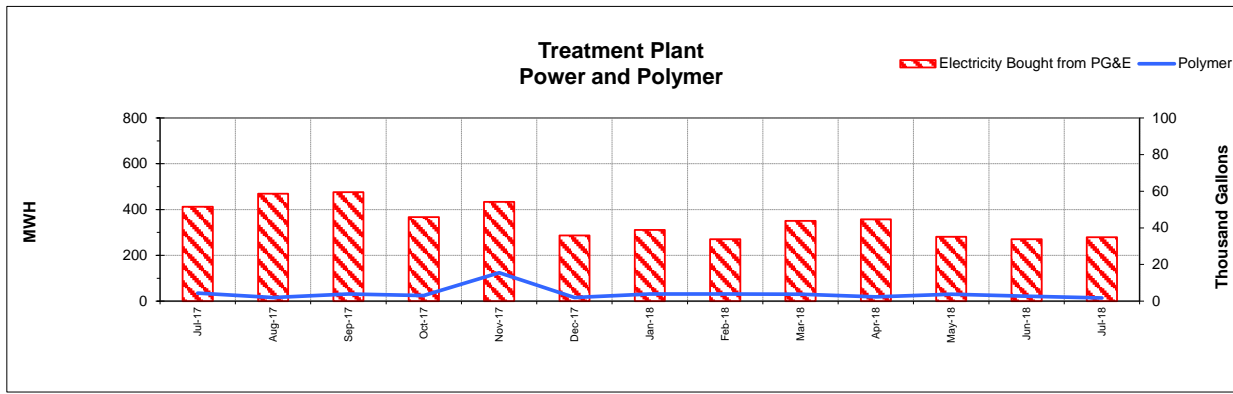
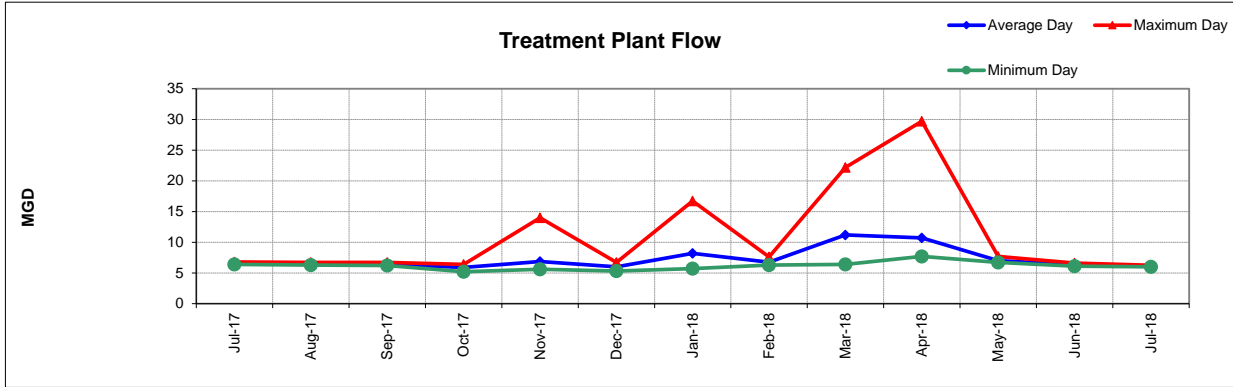
Cash on Hand as of 7/31/18

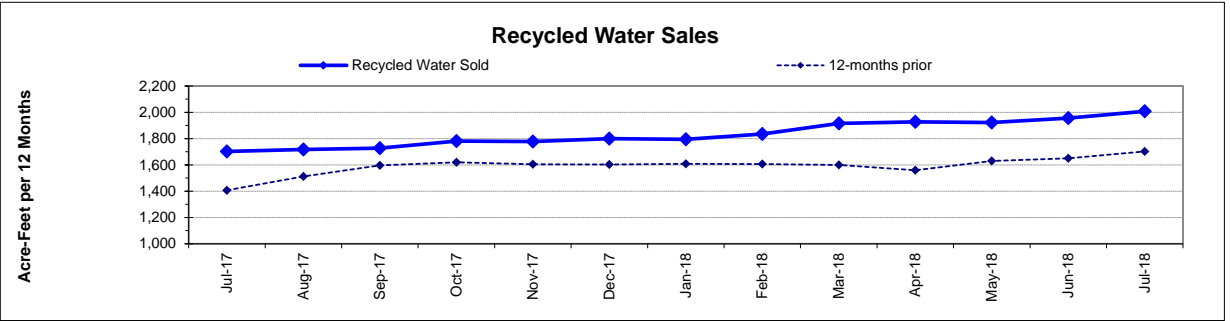
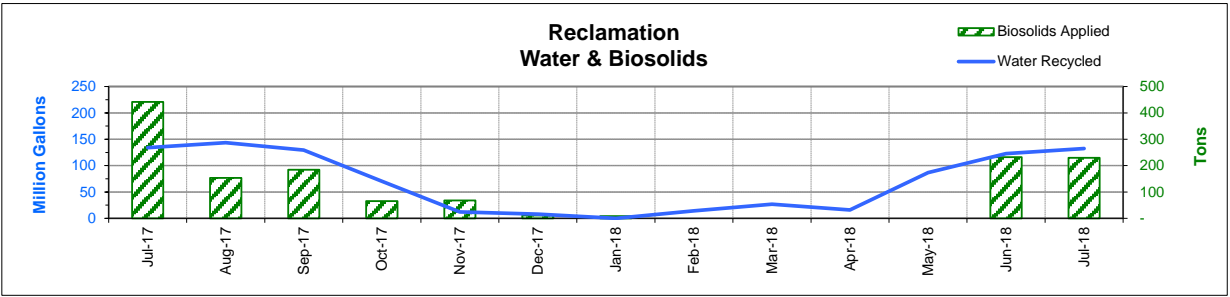
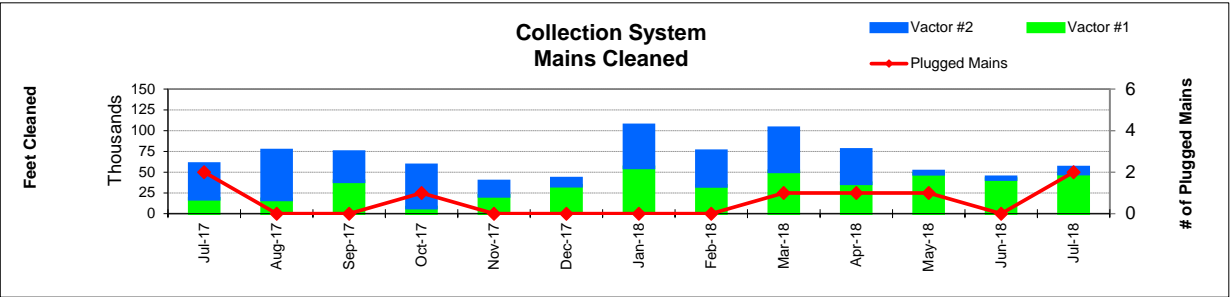
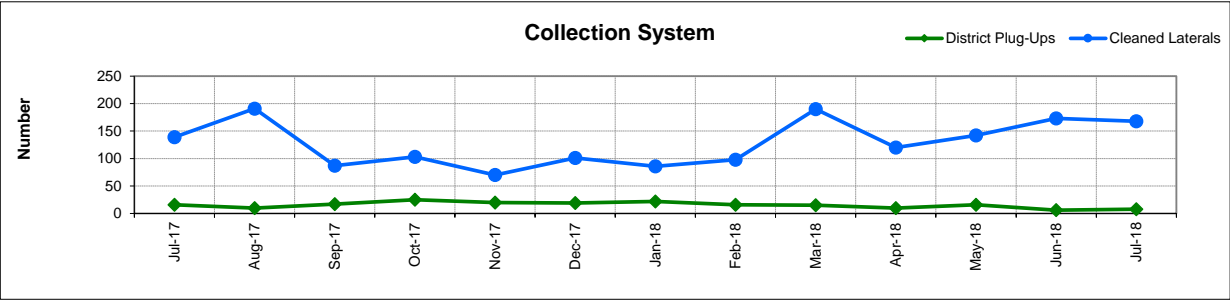
\$20,021,323

**excluding Debt Service restricted funds
7/31/18 -Effective Rate of Return = 1.76%

1. Series 2012A's and 2017's principal/interest payments are made in Aug & Feb
2. Includes Debt Service and Intrafund Transfers; otherwise is 13.7%
3. See Capital Project Status report for details
4. In-house Labor for Capital Projects (Contra acct for Salaries)







FUND BALANCES - MONTHLY

CATEGORY	Jul-17	Aug-17	Sep-17	Oct-17	Nov-17	Dec-17	Jan-18	Feb-18	Mar-18	Apr-18	May-18	Jun-18	Jul-18
<i>(Thousand Dollars)</i>													
7800	11,450	6,645	6,560	6,395	8,372	13,220	13,251	13,210	12,818	20,290	19,326	18,538	12,676
7850	-	-	-	-	-	-	-	-	-	-	-	-	-
Subtotal Operating	11,450	6,645	6,560	6,395	8,372	13,220	13,251	13,210	12,818	20,290	19,326	18,538	12,676
Capital Improvement Projects	7,312	7,083	6,205	5,480	3,897	9,514	8,720	7,830	5,877	5,365	4,573	4,808	3,825
Debt Proceeds	-	-	-	-	-	-	-	-	-	-	-	-	-
Subtotal Capital	7,312	7,083	6,205	5,480	3,897	9,514	8,720	7,830	5,877	5,365	4,573	4,808	3,825
Total Discretionary Funds	18,762	13,728	12,765	11,875	12,269	22,734	21,971	21,040	18,695	25,655	23,899	23,346	16,501
Expansion Fund (Restricted)	-	-	-	-	-	332	449	577	775	2,898	3,007	3,075	3,520
Total Restricted Funds	-	-	-	-	-	332	449	577	775	2,898	3,007	3,075	3,520
TOTAL ALL FUNDS	18,762	13,728	12,765	11,875	12,269	23,066	22,420	21,617	19,470	28,553	26,906	26,421	20,021

DEVELOPMENT WORKLOAD - MONTHLY

CATEGORY	Jul-17	Aug-17	Sep-17	Oct-17	Nov-17	Dec-17	Jan-18	Feb-18	Mar-18	Apr-18	May-18	Jun-18	Jul-18
<u>Phone Requests</u>													
Maps/Drawings	3	4	5	6	3	3	6	6	6	3	6	8	4
Lateral Permits	-	-	-	-	-	-	-	-	-	-	-	-	-
Policy Questions	11	6	4	7	8	6	4	12	17	5	9	8	9
Development Questions	51	71	28	39	40	23	55	63	39	44	79	80	61
Miscellaneous	11	3	3	2	3	10	8	7	15	11	17	27	37
TOTAL	76	84	40	54	54	42	73	88	77	63	111	123	111
<u>Counter Requests</u>													
Maps/Drawings	2	-	1	-	-	-	1	-	-	-	1	1	-
Lateral Permits	15	6	16	4	5	7	11	9	17	12	10	12	9
Policy Questions	5	2	2	2	1	2	-	2	2	-	1	-	2
Development Questions	8	14	8	7	9	9	7	9	15	11	13	12	12
Miscellaneous	2	2	2	3	-	1	1	1	3	-	1	1	2
TOTAL	32	24	29	16	15	19	20	21	37	23	26	26	25
<u>Initial Request (Referrals)</u>	10	11	14	11	17	5	7	13	20	15	20	13	13
<u>Connection Permits Issued</u>													
Residential Permits	1	4	2	1	1	5	3	12	19	16	3	3	5
Commercial Permits	2	5	4	2	2	3	5	3	1	3	2	3	5
Industrial Permits	-	-	-	-	-	-	-	-	-	-	-	-	-
TOTAL PERMITS	3	9	6	3	3	8	8	15	20	19	5	6	10
Residential Units	1	4	2	1	1	5	3	12	336	16	3	3	-
Commercial Units	2	6	4	2	2	3	5	3	1	102	174	3	5
TOTAL UNITS	3	10	6	3	3	8	8	15	337	118	177	6	5
<u>Annexations</u>													
Submitted	-	-	-	-	-	-	-	-	-	-	-	-	1
Acreage	-	-	-	-	-	-	-	-	-	-	-	-	0.60
<u>Plans Reviewed</u>													
<u>Subdivisions/Sites</u>													
First Submittal	10	5	10	6	2	3	9	19	18	14	4	10	10
Second Submittal	5	7	1	1	1	4	2	5	9	6	8	3	5
Third Submittal	4	2	1	7	2	3	5	4	6	2	2	2	3
<u>Building/Tenant Improvements</u>													
First Submittal	8	19	15	9	5	10	5	16	14	7	19	18	10
Second Submittal	9	6	5	9	10	3	1	2	9	1	7	6	8
Third Submittal	6	7	3	2	7	5	2	3	3	4	2	3	5
<u>Miscellaneous Plan Reviews</u>	-	-	-	-	-	-	-	-	-	-	-	-	-
TOTAL PLANS REVIEWED	42	46	35	34	27	28	24	49	59	34	42	42	41

INSPECTION WORKLOAD - MONTHLY

CATEGORY	Jul-17	Aug-17	Sep-17	Oct-17	Nov-17	Dec-17	Jan-18	Feb-18	Mar-18	Apr-18	May-18	Jun-18	Jul-18
<u>CONSTRUCTION</u>													
Locating Sewers	-	-	-	1	-	-	-	-	-	-	-	-	-
Permit Processing	-	-	-	-	-	-	-	-	-	-	-	-	-
Preconstruction Meetings	3	2	-	-	1	1	7	7	5	5	7	2	3
Inspections - Mains	-	-	2	-	-	5	-	20	6	2	4	-	2
Inspections - Manholes	3	3	40	72	45	62	41	38	13	16	25	12	-
Inspections - Laterals	11	8	6	2	7	15	23	26	23	17	25	15	7
Inspections - Cleanouts	4	3	4	4	11	10	31	36	24	26	43	7	3
Inspections - Review Video	3	-	-	-	-	-	-	-	1	2	-	17	1
Demo - Septic Tanks	-	-	-	-	-	-	-	-	-	-	-	-	-
Demo - Buildings	-	-	-	-	-	-	-	-	-	-	-	-	1
Update Record Drawings	-	-	-	-	-	-	-	-	-	-	-	-	-
TOTAL	24	16	52	79	64	93	102	127	72	68	104	53	17
<u>MISCELLANEOUS</u>													
Meter Readings	-	-	-	-	-	-	11	24	-	1	13	-	-
Washdown Facility Inspections	-	-	-	-	-	-	-	-	-	12	-	-	-
General Customer Assistance	34	28	30	31	30	25	26	18	38	11	28	21	40
City of Napa Water Discharge	-	-	-	-	-	-	-	-	-	-	-	-	-
TOTAL	34	28	30	31	30	25	37	42	38	24	41	21	40
<u>SPECIAL PROJECTS</u>													
	21	23	36	24	6	1	7	0	5	6	0	9	21

POLLUTION PREVENTION WORKLOAD - MONTHLY

CATEGORY	Jul-17	Aug-17	Sep-17	Oct-17	Nov-17	Dec-17	Jan-18	Feb-18	Mar-18	Apr-18	May-18	Jun-18	Jul-18
<u>Outreach Activities</u>													
Plant Tours Conducted	2	1	9	1	2	0	3	0	1	5	5	3	1
Presentations Made	0	0	3	0	0	0	0	0	2	1	5	0	1
Total Outreach Activities	2	1	12	1	2	-	3	-	3	6	10	3	2
<u>Inspections Conducted</u>													
Food Service Facilities	-	-	-	-	-	-	6	22	64	51	10	-	-
Auto Body & Car Wash	-	-	-	-	-	-	-	-	-	-	-	-	-
Other	-	-	-	-	1	-	-	-	-	-	-	-	-
Total Inspections	-	-	-	-	1	-	6	22	64	51	10	-	-
<u>Compliance Issues</u>													
NOVs Issued	-	-	1	2	-	1	-	3	2	2	1	3	-
NOEs Issued	-	1	1	1	-	1	1	3	-	1	-	1	-
Non-Compliant-FOG	-	-	-	-	-	1	-	-	-	-	-	-	-
Total Compliance Issues	-	1	2	3	-	3	1	6	2	3	1	4	-
<u>Pollution Prevention</u>													
Clothes Washer Rebates	1	1	19	-	-	-	25	14	21	-	8	21	-
Toilet Retrofit Rebates	16	6	3	-	-	-	-	-	-	-	-	-	-
Pharmaceuticals Diverted (in lbs)	-	-	-	59	63	-	35	-	82	66	-	74	90

RECYCLED WATER DELIVERIES - MONTHLY

	Acres	Jul-17	Aug-17	Sep-17	Oct-17	Nov-17	Dec-17	Jan-18	Feb-18	Mar-18	Apr-18	May-18	Jun-18	Jul-18
MONTHLY (MG)														
Water Sold														
Golf Courses	405.0	73.994	58.595	53.035	26.903	5.504	6.253	0.001	6.152	2.748	3.320	52.726	68.294	64.047
Cemeteries	57.1	0.834	1.116	0.634	0.833	0.193	0.003	-	0.005	0.154	0.385	3.183	3.643	4.903
Parks	18.5	0.902	0.866	0.650	0.333	0.020	-	-	-	-	-	0.823	0.949	1.051
Schools	21.0	2.250	2.178	1.613	1.485	0.195	0.019	-	0.255	0.198	0.242	1.727	2.151	2.122
Commerical	167.6	17.468	17.399	15.227	13.665	4.387	1.402	-	1.835	1.765	3.169	9.893	12.414	15.863
Vineyards	564.0	19.143	30.814	18.019	16.506	1.766	0.225	-	5.695	21.988	8.001	6.377	21.260	43.468
Trucked Water	175.0	0.474	0.602	0.274	0.197	0.030	0.014	-	0.017	0.029	0.880	0.143	0.737	0.666
Subtotal Sales	1,408.2	115.065	111.571	89.451	59.922	12.095	7.916	0.001	13.960	26.881	15.996	74.872	109.448	132.120
District Use														
Jameson	330.0	7.298	18.483	20.751	-	-	-	-	0.077	-	-	-	-	-
Somky	213.0	11.488	13.426	19.372	10.364	-	-	-	-	-	-	11.710	13.263	0.208
Fagundes/Airport	50.5	-	-	-	-	-	-	-	-	-	-	-	-	-
Subtotal District	593.5	18.786	31.910	40.122	10.364	-	-	-	0.077	-	-	11.710	13.263	0.208
TOTAL DELIVERED	2,001.7	133.851	143.481	129.574	70.286	12.095	7.916	0.001	14.037	26.881	15.996	86.582	122.711	132.327
ANNUAL (AF)														
Water Sold														
Golf Courses	405.0	1,047	1,033	1,044	1,048	1,045	1,064	1,064	1,083	1,091	1,093	1,091	1,097	1,067
Cemeteries	57.1	14	15	13	15	16	16	16	16	16	17	25	34	46
Parks	18.5	14	13	13	13	14	14	14	14	14	14	14	14	14
Schools	21.0	32	33	33	36	36	36	36	37	37	38	39	38	37
Commerical	167.6	309	309	310	322	325	328	324	329	333	335	318	303	298
Vineyards	564.0	281	308	310	342	336	336	336	353	420	423	427	460	534
Trucked Water	175.0	5	5	5	6	6	5	5	5	5	8	8	10	11
Subtotal Sales	1,408.2	1,702	1,717	1,728	1,782	1,778	1,799	1,794	1,835	1,916	1,928	1,923	1,955	2,008
District Use														
Jameson	330.0	164	183	182	143	143	143	143	143	143	143	143	143	121
Somky	213.0	254	230	222	223	223	223	223	223	223	223	240	244	210
Fagundes/Airport	50.5	-	-	-	-	-	-	-	-	-	-	-	-	-
Subtotal District	593.5	419	413	404	366	366	366	366	366	366	366	383	387	330
TOTAL DELIVERED	2,001.7	2,121	2,130	2,132	2,148	2,144	2,165	2,160	2,202	2,282	2,294	2,306	2,343	2,338

BIOSOLIDS HANDLING - MONTHLY

Site	Jul-17	Aug-17	Sep-17	Oct-17	Nov-17	Dec-17	Jan-18	Feb-18	Mar-18	Apr-18	May-18	Jun-18	Jul-18
<u>Land Applied by NSD</u>													
Somky													
Airport/Fagundes													
Jameson Canyon	442	153	184	65	68	11	8	-	-	-	-	232	229
Subtotal by NSD	442	153	184	65	68	11	8	-	-	-	-	232	229
<u>Land Applied by Contractor</u>													
Somky													
Airport/Fagundes													
Jameson Canyon													
Subtotal by Contractor	-	-	-	-	-	-	-	-	-	-	-	-	-
Total Land Applied	442	153	184	65	68	11	8	-	-	-	-	232	229
Off Site (Contractor)													
Total (tons)	442	153	184	65	68	11	8	-	-	-	-	232	229

COLLECTION SYSTEM MAINTENANCE - MONTHLY

CATEGORY	Jul-17	Aug-17	Sep-17	Oct-17	Nov-17	Dec-17	Jan-18	Feb-18	Mar-18	Apr-18	May-18	Jun-18	Jul-18
<u>Plugups</u>													
Total Calls	43	36	42	54	63	48	62	49	67	40	44	25	37
Business Hours	25	27	26	33	38	27	40	35	53	23	32	16	24
After Hours	18	9	16	21	25	21	22	14	16	17	12	9	9
District's	16	10	17	25	20	19	22	16	15	10	16	6	8
Property Owner's	27	26	25	29	43	29	40	33	40	30	28	19	29
Plugged Main Lines									1	1	1		2
Run Lateral w/Eel	139	191	87	103	70	101	86	98	190	120	142	173	168
<u>Cleaning (feet of sewer)</u>													
Vactor #1	18,053	17,179	38,849	7,417	21,500	33,612	55,782	33,391	51,027	36,507	47,937	41,767	48,278
Vactor #2	41,749	58,712	35,140	50,621	17,254	8,642	50,441	41,842	51,666	40,119	2,708	2,065	7,290
Hydro						1,251							
Rodder							765						
Total (feet)	59,802	75,891	73,989	58,038	38,754	43,505	106,988	75,233	102,693	76,625	50,645	43,832	55,568
<u>Cleaning Days</u>													
Vactor #1	8	8	14	3	10	14	18	11	15	14	20	19	16
Vactor #2	13	23	11	18	10	5	14	13	18	13	1	1	3
Hydro													
Rodder							1						
Feet/day	2,850	2,450	2,950	2,750	1,950	2,300	3,250	3,150	3,100	2,850	2,400	2,200	2,900
Vactor #1	2,250	2,150	2,750	2,450	2,150	2,400	3,100	3,050	3,400	2,600	2,400	2,200	3,000
Vactor #2	3,200	2,550	3,200	2,800	1,750	1,750	3,600	3,200	2,850	3,100	2,700	2,050	2,450
Hydro													
Rodder							750						
<u>Video Inspections</u>													
Mains (feet)	15,731	15,789			10,767	6,320	17,644	12,878	21,714	18,530	26,140	18,248	18,188
Laterals (each)	265	246	170	184	172	186	114	122	211	179	197	223	266
<u>Construction (each)</u>													
Cleanouts	31	17	7	4	6	11	15	16	8	6	10	8	27
Laterals		9	1	1	1	1	1	4	1	10	24	10	9
Mains						1		1					
Manholes										1	2		
Other		2		57	79					3			
<u>USA Markings</u>													
Regular (w/in 2 days)	215	264	233	252	363	210	281	277	266	280	282	277	397
Emergency (w/in 2 hours)	5	3	7	33	9	13	15	3	18	31	37	16	8

WASTEWATER PLANT OPERATIONS DATA - MONTHLY

[illegible]

WASTEWATER PLANT MAINTENANCE and LABORATORY DATA - MONTHLY

CATEGORY	Jul-17	Aug-17	Sep-17	Oct-17	Nov-17	Dec-17	Jan-18	Feb-18	Mar-18	Apr-18	May-18	Jun-18	Jul-18
<u>Scheduled</u>													
Old	37	28	17	33	33	61	39	27	39	12	6	8	9
New	72	78	78	86	82	56	117	59	82	95	89	101	95
Completed	81	89	62	86	54	78	129	41	109	101	87	100	91
New Balance	28	17	33	33	61	39	27	39	12	6	8	9	13
<u>Unscheduled</u>													
Old	47	45	38	43	34	44	40	35	38	30	36	30	27
New	29	40	32	21	37	19	18	16	24	25	14	21	23
Completed	31	47	27	30	27	23	23	13	32	19	20	24	21
New Balance	45	38	43	34	44	40	35	38	30	36	30	27	29
<u>Total Work Orders</u>													
Old	84	73	55	76	66	105	79	62	77	42	42	38	36
New	101	118	110	107	119	75	135	75	106	120	103	122	118
Completed	112	132	89	117	81	101	152	60	141	121	107	125	112
New Balance	73	55	76	67	105	79	62	77	42	42	38	36	42
<u>LAB ANALYSES</u>													
<u>Sample Type</u>													
Regulatory	173	193	194	156	178	163	123	190	208	200	188	146	139
Process Control	1,024	1,104	1,091	1,137	1,220	1,139	1,071	1,080	1,103	1,103	796	871	917
Special Request	-	-	7	8	4	6	4	2	4	1	6	34	2
Quality Control/Assurance	464	549	428	420	1,110	874	692	794	741	936	489	500	483
TOTAL	1,661	1,846	1,720	1,721	2,512	2,182	1,890	2,066	2,056	2,240	1,479	1,551	1,541

**Summary of NSD Capital Project Status
through 07-31-18**

Proj #	Description	FY 18/19 Budget	FY 17/18 Carryovers	Adj.	Final FY 18/19 Budget	Encumbrance	Costs Paid to Date	Budget Remaining	% Budget Expended
	<u>COLLECTION SYSTEM</u>								
13701	Main Line Sewer Rehabilitation	95,000			95,000	-	-	95,000	-
13702	Manhole Raising/Rehabilitation	428,500			428,500	-	2	428,498	0%
13703	Lateral Replacement/Rehabilitation	77,100			77,100	4,693	65	72,342	0%
13704	Cleanouts Installation/Rehabilitation	93,200			93,200	-	4	93,196	0%
13705	Inflow & Infiltration (I&I) Reduction Program	214,200			214,200	-	-	214,200	-
14703	Browns Valley Rd & First St	5,075,000			5,075,000	-	48,127	5,026,873	1%
18702	Collection System Asset Management Software	275,000			275,000	-	-	275,000	-
18705	Sewer System Inflow/Infiltration 2018	2,600,000			2,600,000	-	-	2,600,000	-
18706	Sewer System Inflow/Infiltration 2019	2,321,100			2,321,100	-	-	2,321,100	-
19701	66-inch Trunk Rehabilitation (Kaiser to IPS)	1,400,000			1,400,000	-	-	1,400,000	-
19702	72-inch Trunk Construction (Kaiser to IPS)	1,000,000		(1,000,000)	-	-	-	-	-
19703	2020 Collection System Rehabilitation	20,000			20,000	-	-	20,000	-
19727	Collection System Master Plan	-		1,000,000	1,000,000	-	-	1,000,000	-
	<u>COLLECTION SYSTEM - EQUIPMENT</u>								
19704	Vehicle 180 - Ford F150 - USA Truck	35,400			35,400	-	-	35,400	-
	<u>LIFT STATIONS</u>								
17711	West Napa PS - Rehab	5,200,000			5,200,000	-	-	5,200,000	-
19705	Stonecrest PS Pump Rebuild	45,000			45,000	-	-	45,000	-
	<u>TREATMENT</u>								
13745	Pond 1 Dredge	600,000			600,000	-	-	600,000	-
	<u>TREATMENT - EQUIPMENT</u>								
16712	Main - Primary Clarifier Mech/Struct Rehabilitation	150,000			150,000	-	-	150,000	-
17713	Secondary PS VFD Rplcmnt (3)	57,400			57,400	-	-	57,400	-
18720	Neuros Blowers Rebuild	64,300			64,300	-	-	64,300	-
18740	Main - Chemical Storage Building Piping Repair	250,000			250,000	-	-	250,000	-
19706	WWTP MP - 3W System Improvements Phase 2	300,000			300,000	-	-	300,000	-
19707	Portable Pumps 10-inch (2)	172,100			172,100	-	-	172,100	-
19708	Main - Rotork Actuator Replacement	95,000			95,000	-	-	95,000	-
19709	Main - Polymer Tank (3) Replacement	10,000			10,000	-	-	10,000	-
19710	Main - 12kV Redundant Line	120,000			120,000	-	-	120,000	-

**Summary of NSD Capital Project Status
through 07-31-18**

Proj #	Description	FY 18/19 Budget	FY 17/18 Carryovers	Adj.	Final FY 18/19 Budget	Encumbrance	Costs Paid to Date	Budget Remaining	% Budget Expended
19711	Main - CCB Coating - E&W Channels	50,000			50,000	-	-	50,000	-
19712	Main - Utility Generator Power Transition	75,000			75,000	-	-	75,000	-
19713	Main - Cogen Hot Water to FOG Pad	50,000			50,000	-	-	50,000	-
19714	Main - Ventilation System Expansion Boots	50,000			50,000	-	-	50,000	-
19715	Main - ARV Replacement	30,000			30,000	28,910	-	1,090	-
19716	Main - P4PS Pump #3 Rebuild	40,000			40,000	-	-	40,000	-
	<u>TREATMENT - STRUCTURES</u>								
17726	Headworks Equipment Rehab/Replacment	1,900,000			1,900,000	-	-	1,900,000	-
18736	Treatment Plant Project 2018	2,100,000			2,100,000	-	17,895	2,082,105	1%
19717	WWTP MP - Pond Transfer Structures 2 to 3	5,000			5,000	-	-	5,000	-
	<u>SCADA</u>								
19718	SCADA MP Phase 5 Security Study	250,000			250,000	-	-	250,000	-
	<u>RECYCLING - DISTRICT</u>								
18731	Coombsville Truck Fill Station	375,000			375,000	-	-	375,000	-
19719	24-inch Valve Replacement - Kirkland Line	5,000			5,000	-	-	5,000	-
19720	Jameson PS VFD	68,900			68,900	-	-	68,900	-
19721	Soscol RW Pump Replacement/Rehab	150,000			150,000	-	-	150,000	-
19722	Vehicle 723/720 - Attachments/Implements	28,700			28,700	-	-	28,700	-
	<u>RECYCLING - EXPANSION</u>								
13727	North Bay Wate Reuse Project	150,000			150,000	-	-	150,000	-
	<u>OTHER</u>								
13729	Development Technical Support	248,300			248,300	-	-	248,300	-
19723	AV System Replacement - Conference Rooms	20,000			20,000	-	-	20,000	-
19724	Fence Repair - District Wide	25,000			25,000	-	-	25,000	-
19725	Vehicle 011 - CSET Trailer	23,700			23,700	-	-	23,700	-
19726	Vehicle 607 - Electrical Hybrid Vehicle	42,800			42,800	-	-	42,800	-
GRAND TOTAL ALL PROJECTS		\$26,385,700	-	-	\$26,385,700	\$33,603	\$66,093	\$26,286,004	0%