



Napa Sanitation District

General Manager's Report

for

March, 2018

Contents:

- a. Transmittal Memo
- b. Budget Status and Cash Summary
- c. Key Information Graphs – Fund Balances, Treatment Plant and Collection
- d. Fund Balances
- e. Development Processing
- f. Construction Inspection
- g. Pollution Prevention
- h. Recycled Water Deliveries
- i. Biosolids Handling
- j. Collection System Maintenance
- k. Treatment Plant Operations
- l. Treatment Plant Maintenance & Laboratory
- m. Capital Project Expenditure Summary



NAPA SANITATION DISTRICT

General Manager's Report

Dedicated to Preserving the Napa River for Generations to Come

DATE: May 2, 2018

FROM: Timothy B. Healy, General Manager

SUBJECT: General Manager's Report for March 2018

REGULATORY COMPLIANCE:

Collection System Compliance:	0 Category 1 SSO's, 0 Category 2 SSO's, and 7 Category 3 SSO's
NPDES Permit (WWTP) Compliance:	Full compliance with all regulations
Air Quality Compliance:	Full compliance with all regulations
Recycled Water Compliance:	Full compliance with all regulations
Biosolids Compliance:	Full compliance with all regulations
Significant Comments:	None

FISCAL STATUS:

Period Covered:	July 1, 2017 – March 31, 2018
Percent Fiscal Year:	75.0%
Operating Expenditures to date:	68.0%
Historical Expenditures to date:	75.7%
Significant Comments:	Historically, the "Operating Expenditures to date" would include 75% of the intrafund transfer from Operating to Capital that was budgeted for the year. However, cash flow in the Capital Fund has been sufficient this year and only 50% of the intrafund transfer budget has been needed. We will monitor this closely to make the fund transfers as necessary to the Capital Fund.

PERSONNEL:

Significant events for the month of March 2018 in the Human Resources Department:

New Hires:	None
Separations:	Nathaniel Fua, Operator-in-Training resigned
Promotions:	None
Recruitment Activities:	None
Injuries:	Paul Kiser, Collection System Worker II, on modified duty – no lost time.

Summaries of Operational Highlights are on following pages.

COLLECTIONS:

Significant events for the month of March 2018 in Collection System Maintenance include:

- The District had 0 Category 1 Sanitary Sewer Overflows (SSO's), 0 Category 2 SSO's and 7 Category 3 SSO's during the month. (A Category 1 is defined as an SSO that reached a drainage channel and/or surface water or; an SSO that reached a storm drain pipe that was not fully recovered and returned to the sanitary sewer system. A Category 2 is defined as an SSO that is equal to or greater than 1,000 gallons that did not reach a surface water. A Category 3 is defined as an SSO that is less than 1,000 gallons that did not reach a surface water. These are usually minor overflows of less than 10 gallons from cleanouts on District laterals that can be cleaned up by the crews.)
- The repair crew installed 5 cleanouts, repaired 3 cleanouts, repaired 1 lateral and repaired 1 mainline. Additionally, the service response/programs crew completed 90 work orders in support of the grease and odor control program, responded to 59 customer requests for service (15 were NSD problem) and closed out 284 mark and locate request tickets.
- The preventative maintenance crews ran work orders on 182 laterals, cleaned approximately 102,902 feet of main line and CCTV inspected 28 laterals. Also, the CCTV truck televised 19,834 feet of mainline.

TREATMENT PLANT:

Significant events for the month of March 2018 in the Treatment Plant Department:

Plant Operations:

- For March 2018, the plant's influent flow was 347.0 MG as compared to last year flow for March 2017 of 394.1 MG
- Flow to the Napa River for March 2018 was 415.7 MG compared to last year's flow of 480.3 MG.
- The production of recycle quality occurred for 20 day during March 2018 with a total distributed flow of 16.8 MG.
- There was 5.31" rain fall for March 2018 as compared to 4.0" rain fall for March 2017.
- Pond 4 end of the month recorded level reading was 33.26" as compared to March 2017 of 45.73". Total remaining pond capacity for March 2018 was 54.1% as compared to March 2017 remaining capacity of 40.0%.

Power Consumption and Production:

- This March power consumption purchased from PG&E was 345 MWH in comparison to March 2017 purchase of 457 MWH (The cogeneration unit was offline last year during January for overhaul).
- Cogeneration unit ran 739 of 744 hours for the month – 98.33% uptime, averaging 366.33Kw
- Solar generation in February was 74 MWH, compared to 98 MWH in January.

Maintenance:

Significant events for the month of March 2018:

Process Maintenance

- Cogeneration unit monthly emission test - in compliance with BAAQMD permit
- Replaced pump #2/digester elevator sump
- Belt press #1 polymer feed pump/replaced Rotor and Stator
- Replaced check valve on Plant Air Compressor #2
- Rebuilt regulator/digester gas feed to Cogen

Projects

- Belt Press Sludge feed pumps/replaced Rotork Actuators

Standby Power

- Plant generators operational testing only
- Riverpark, Stonecrest, West Napa operational testing only

Influent Pumps

- All pumps operational

Laboratory:

Effluent (EFF-001) Summary

There were no violations of Effluent limits during the month of March, 2018. All parameters were monitored at the required frequencies. The following were notable sampling events:

- March 6, 2018: Metals, Cyanide, Mercury, Nutrients
- March 4-8, 2018: Acute Toxicity Bioassay
- March 13, 2018: Nutrients
- March 14, 2018: Nutrients

Influent (INF-001) Summary

Monthly Influent monitoring of all parameters occurred at the required frequencies. The following were notable sampling events:

- March 6, 2018: Metals, Cyanide, Mercury

RECYCLING:

Significant events in the Recycling Department for March 2018 include:

- Recycled water delivered for the month of March 2018 (26.881 million gallons), as compared to March 2017 (0.794 million gallons) is higher due to reservoir filling, golf

course and commercial landscape demand. Delivered recycled water volume represents the sum of all use site flow meter consumption values.

- Staff approved the connection of Tulocay Cemetery in the MST area.
- Staff continued biosolids encapsulating operations as well as infield staging for the reporting period.

POLLUTION PREVENTION:

Significant events in the Pollution Prevention and Outreach Division March 2018 include:

- There was one tour of the treatment plant given in March to students from Vintage High School. Two presentations were given in March at the Sheehy Creek field day with American Canyon High School Students and at the American Canyon High School Career Fair.
- In March, 82 pounds of medication was collected at Family Drug. The total amount of unneeded medications collected since the drug takeback program began in September 2010 is 21,041.2 pounds.
- The District issued 21 ESME Washer Rebates this month at \$12.50 each for a total of \$262.50.

ENGINEERING / CAPITAL PROJECTS / DEVELOPMENT:

Significant events occurring in the Engineering Division for March 2018 include:

- Consultant continued design of the Headworks Equipment Replacement Project.
- Contractor continued construction of the Recycled Water Reservoir Improvements Project.
- Staff issued a Request for Quotations for the Recycled Water Reservoir Improvements Project – Floating Covers
- Contractor was issued Notice to Proceed for the 2018 Collection System Rehabilitation Project.
- Consultant continued design of the Browns Valley Trunk Project.
- Consultant continued design of the Pond 1 Dredge Project.
- Staff issued Notice Inviting Bids and held a pre-bid meeting for the 2018 Treatment Plant Improvements Project
- Consultant and Staff continued work on Phase 1A of the Asset Management Program.
- Contractor continued construction of the 2017 Collection System Rehabilitation Project.
- Staff reviewed 59 sets of development plans and deemed 33 sets of plans complete. The approved plans consisted of one commercial lateral, four recycled water lateral, nine tenant improvements, one public lateral, three residential laterals, and fifteen residential dwellings.

Budget Status & Cash Summary - July 1, 2017 - March 31, 2018 (75.0% of the year)

<i>Expenditures</i>	FY 17-18 Budget	Encumbrances	Expenditures to date	Committed to date	Remaining Balance	Percent Committed
Operating						
Salaries & Benefits	\$9,581,300	\$1,133	\$6,342,385	\$6,343,518	\$3,237,782	66.2%
Services & Supplies	6,054,300	964,977	3,402,801	4,367,778	1,686,522	72.1%
Taxes	28,650	-	14,355	14,355	14,295	50.1%
Debt Service	4,777,450	-	4,775,374	4,775,374	2,076 (1)	100.0%
Intrafund Transfers	8,900,000	-	4,450,000	4,450,000	4,450,000	50.0%
Total Operating:	\$29,341,700	\$966,110	\$18,984,916	\$19,951,026	\$9,390,674 (2)	68.0%
Capital						
Bldgs/Improvements & Equip	\$33,785,500	\$5,151,124	\$11,461,149	\$16,612,273	\$17,173,227 (3)	49.2%
Intrafund Transfers	3,630,000	-	3,630,000	3,630,000	-	100.0%
Total Capital :	\$37,415,500	\$5,151,124	\$15,091,149	\$20,242,273	\$17,173,227	54.1%
Grand Total Expenditures:	\$66,757,200	\$6,117,234	\$34,076,065	\$40,193,299	\$26,563,901	60.2%

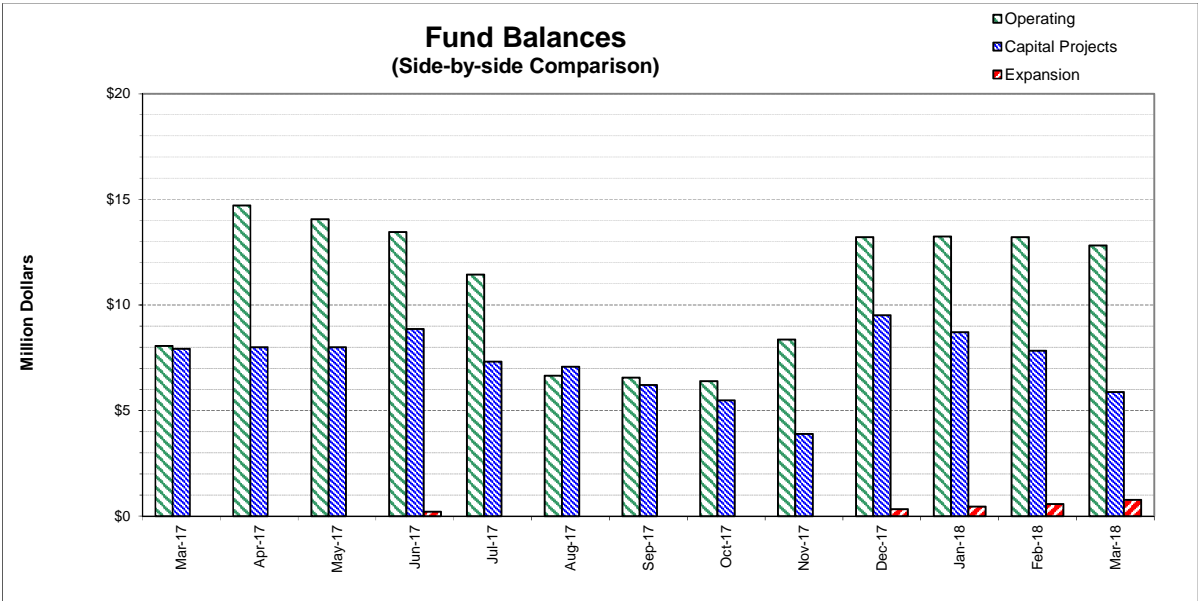
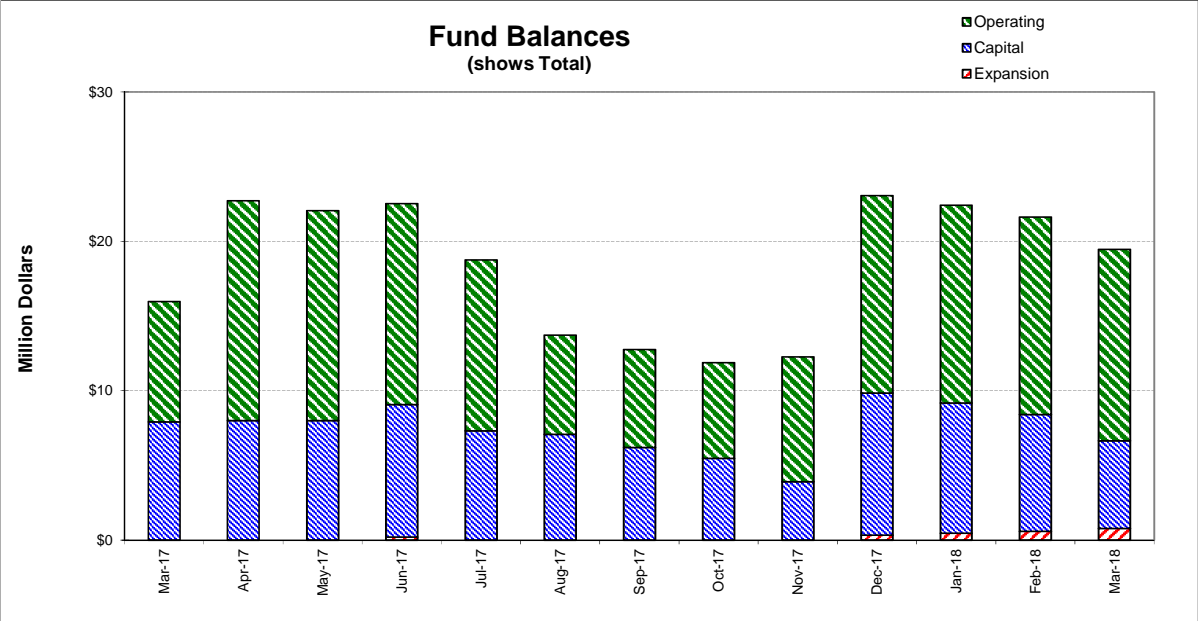
<i>Revenues</i>	FY 17-18 Budget	Encumbrances	Collected to date	Received to Date	Uncollected Revenue	Percent Collected
Operating						
Use of Money/Property	\$896,000		\$619,783	\$619,783	\$276,217	69.2%
Intergovernmental	\$15,000		\$0	-	15,000	N/A
Charges for Services	27,429,100		17,307,579	17,307,579	10,121,521	63.1%
Miscellaneous Revenues	61,000		395,958	395,958	(334,958) (4)	649.1%
Donations/Contributions (Capital Labor)	-		549,003	549,003	(549,003) (5)	N/A
Total Operating:	\$28,401,100		\$18,872,323	\$18,872,323	\$9,528,777	66.4%
Capital						
Use of Money/Property	\$0		\$1,721	\$1,721	(\$1,721)	N/A
Capacity Charges	3,630,000		4,058,508	4,058,508	(428,508)	111.8%
Intergovernmental	4,076,000		1,516,321	1,516,321	2,559,679	37.2%
Bond/Loan Proceeds	10,137,000		-	-	10,137,000	0.0%
Sale of Assets	25,000		8,372	8,372	16,628	N/A
Miscellaneous Revenues	-		6,870	6,870	(6,870)	N/A
Intrafund Transfers	12,530,000		8,080,000	8,080,000	4,450,000	64.5%
Total Capital:	\$30,398,000		\$13,671,793	\$13,671,793	\$16,726,207	45.0%
Grand Total Revenue:	\$58,799,100		\$32,544,116	\$32,544,116	\$26,254,984	55.3%

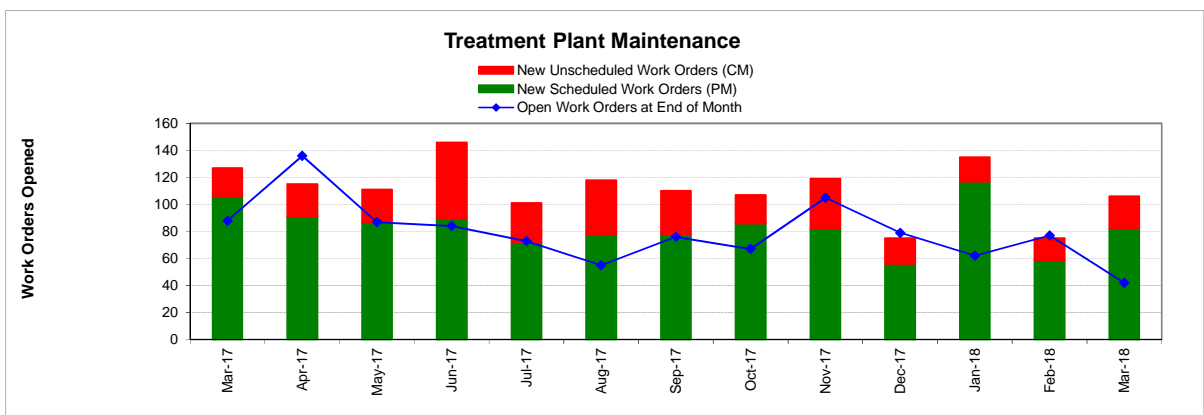
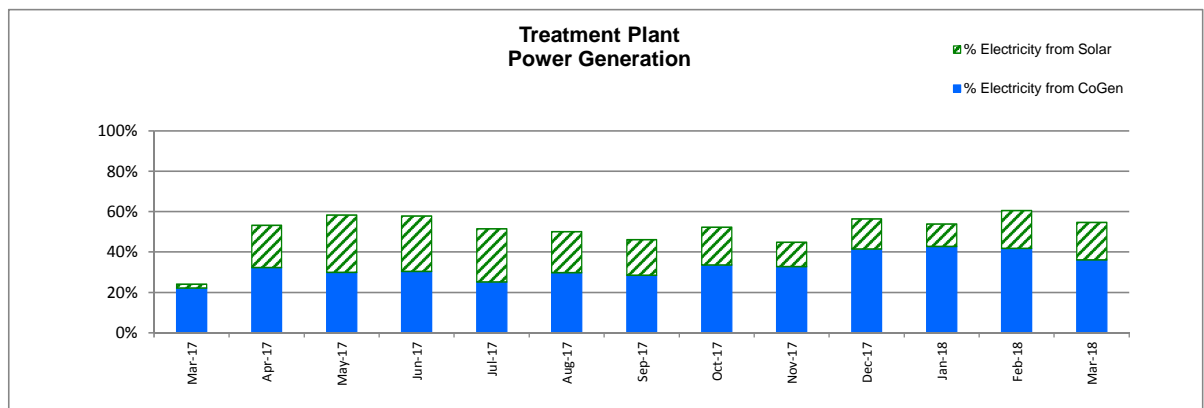
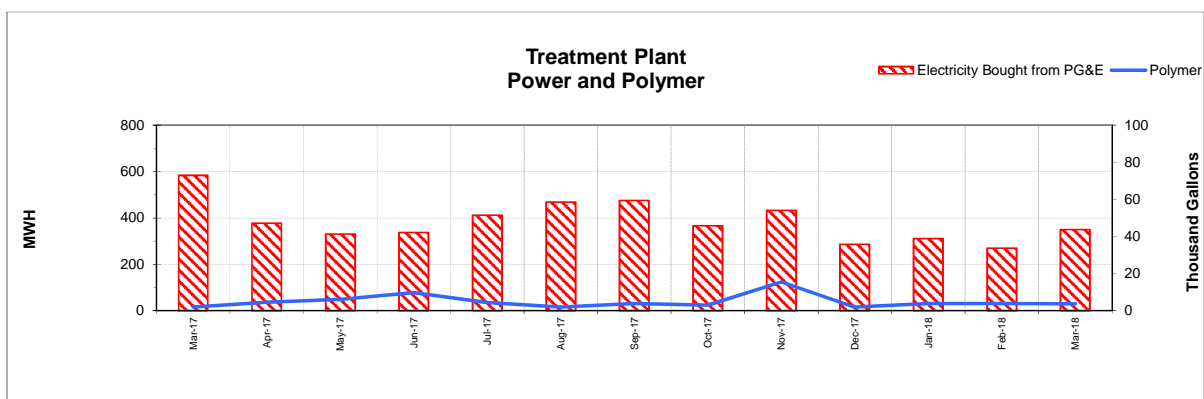
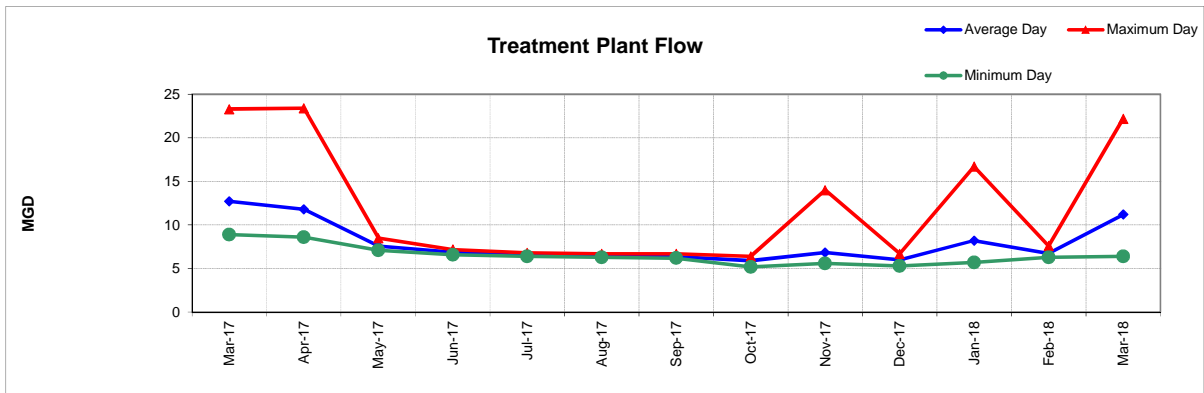
Cash on Hand as of 3/31/18

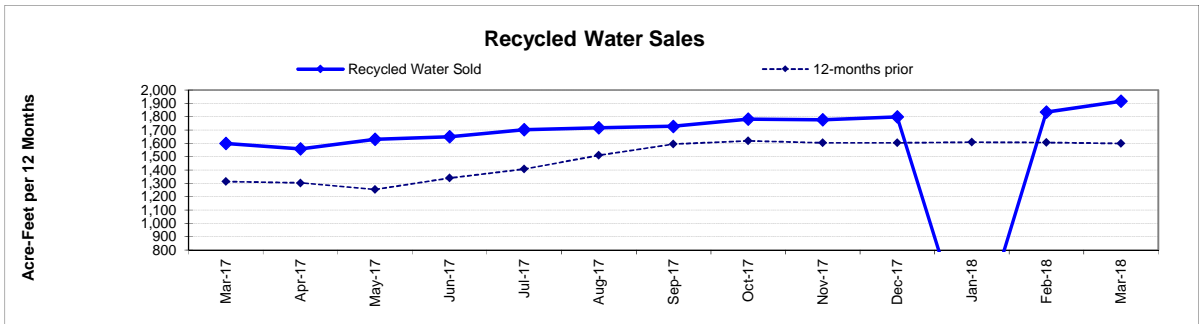
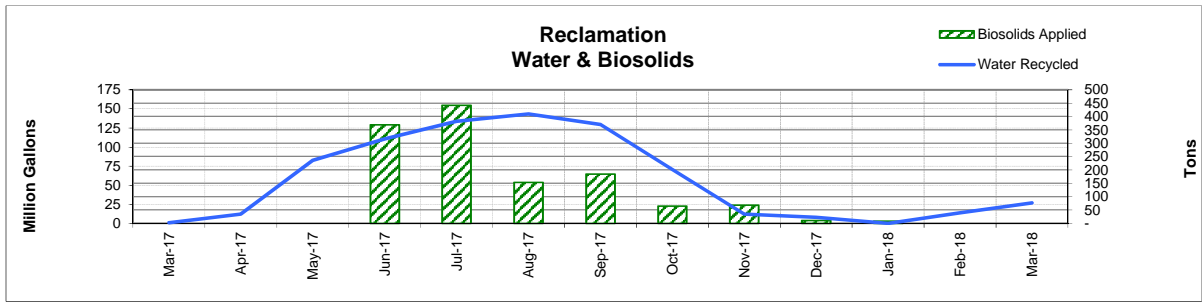
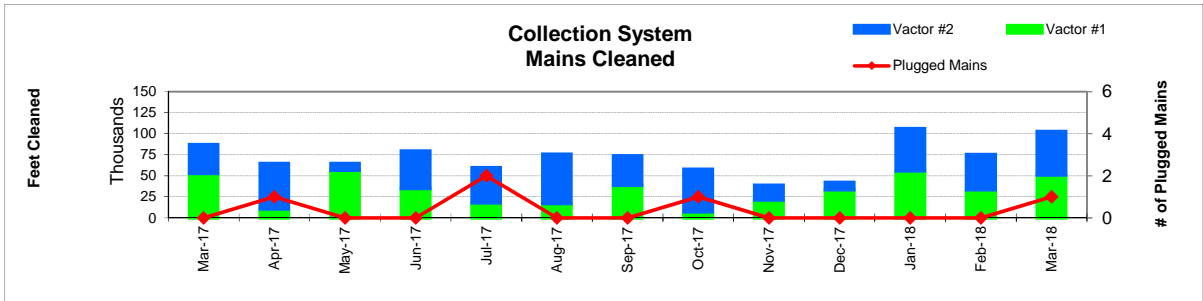
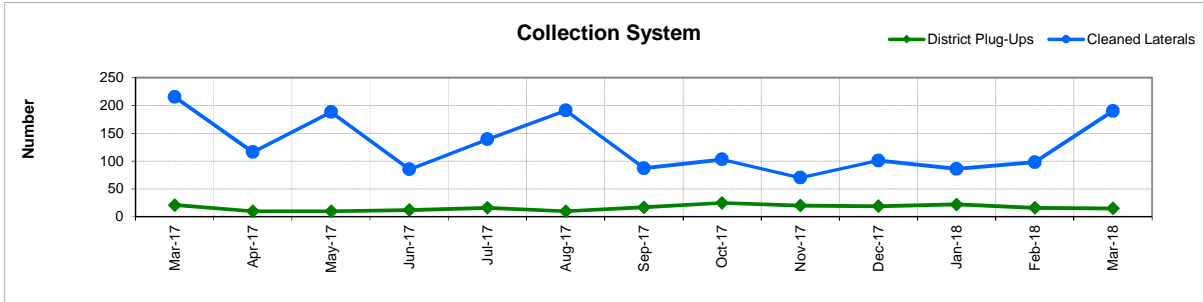
\$19,470,656

**excluding Debt Service restricted funds
3/31/18 -Effective Rate of Return = 1.48%

1. Series 2009B's and 2012A's principal/interest payments are made in Aug & Feb
2. Includes Debt Service and Intrafund Transfers; otherwise is 68.5%
3. See Capital Project Status report for details
4. Includes reimbursement from NBWRA from FY 16-17
5. In-house Labor for Capital Projects (Contra acct for Salaries)







FUND BALANCES - MONTHLY

CATEGORY	Mar-17	Apr-17	May-17	Jun-17	Jul-17	Aug-17	Sep-17	Oct-17	Nov-17	Dec-17	Jan-18	Feb-18	Mar-18
<i>(Thousand Dollars)</i>													
7800	8,055	14,722	14,059	13,463	11,450	6,645	6,560	6,395	8,372	13,220	13,251	13,210	12,818
7850	-	-	-	-	-	-	-	-	-	-	-	-	-
Subtotal Operating	8,055	14,722	14,059	13,463	11,450	6,645	6,560	6,395	8,372	13,220	13,251	13,210	12,818
Capital Improvement Projects	7,921	8,001	7,995	8,867	7,312	7,083	6,205	5,480	3,897	9,514	8,720	7,830	5,877
Debt Proceeds	-	-	-	-	-	-	-	-	-	-	-	-	-
Subtotal Capital	7,921	8,001	7,995	8,867	7,312	7,083	6,205	5,480	3,897	9,514	8,720	7,830	5,877
Total Discretionary Funds	15,976	22,723	22,054	22,330	18,762	13,728	12,765	11,875	12,269	22,734	21,971	21,040	18,695
Expansion Fund (Restricted)	-	-	-	202	-	-	-	-	-	332	449	577	775
Total Restricted Funds	-	-	-	202	-	-	-	-	-	332	449	577	775
TOTAL ALL FUNDS	15,976	22,723	22,054	22,532	18,762	13,728	12,765	11,875	12,269	23,066	22,420	21,617	19,470

DEVELOPMENT WORKLOAD - MONTHLY

CATEGORY	Mar-17	Apr-17	May-17	Jun-17	Jul-17	Aug-17	Sep-17	Oct-17	Nov-17	Dec-17	Jan-18	Feb-18	Mar-18
<u>Phone Requests</u>													
Maps/Drawings	4	5	5	5	3	4	5	6	3	3	6	6	6
Lateral Permits	2	-	-	-	-	-	-	-	-	-	-	-	-
Policy Questions	6	4	10	19	11	6	4	7	8	6	4	12	17
Development Questions	63	62	91	95	51	71	28	39	40	23	55	63	39
Miscellaneous	6	8	8	10	11	3	3	2	3	10	8	7	15
TOTAL	81	79	114	129	76	84	40	54	54	42	73	88	77
<u>Counter Requests</u>													
Maps/Drawings	-	1	3	6	2	-	1	-	-	-	1	-	-
Lateral Permits	11	10	10	18	15	6	16	4	5	7	11	9	17
Policy Questions	1	-	5	2	5	2	2	2	1	2	-	2	2
Development Questions	5	15	29	21	8	14	8	7	9	9	7	9	15
Miscellaneous	-	1	5	6	2	2	2	3	-	1	1	1	3
TOTAL	17	27	52	53	32	24	29	16	15	19	20	21	37
<u>Initial Request (Referrals)</u>	25	17	22	20	10	11	14	11	17	5	7	13	20
<u>Connection Permits Issued</u>													
Residential Permits	3	1	1	12	1	4	2	1	1	5	3	12	19
Commercial Permits	3	1	4	2	2	5	4	2	2	3	5	3	1
Industrial Permits	-	-	-	-	-	-	-	-	-	-	-	-	-
TOTAL PERMITS	6	2	5	14	3	9	6	3	3	8	8	15	20
Residential Units	3	1	2	35	1	4	2	1	1	5	3	12	336
Commercial Units	-	1	4	7	2	6	4	2	2	3	5	3	1
TOTAL UNITS	3	2	6	42	3	10	6	3	3	8	8	15	337
<u>Annexations</u>													
Submitted	-	-	-	-	-	-	-	-	-	-	-	-	-
Acreage	-	-	-	-	-	-	-	-	-	-	-	-	-
<u>Plans Reviewed</u>													
<u>Subdivisions/Sites</u>													
First Submittal	4	11	6	8	10	5	10	6	2	3	9	19	18
Second Submittal	7	6	8	4	5	7	1	1	1	4	2	5	9
Third Submittal	5	1	2	8	4	2	1	7	2	3	5	4	6
<u>Building/Tenant Improvements</u>													
First Submittal	7	4	9	17	8	19	15	9	5	10	5	16	14
Second Submittal	5	4	4	5	9	6	5	9	10	3	1	2	9
Third Submittal	10	3	7	8	6	7	3	2	7	5	2	3	3
<u>Miscellaneous Plan Reviews</u>	-	-	-	-	-	-	-	-	-	-	-	-	-
TOTAL PLANS REVIEWED	38	29	36	50	42	46	35	34	27	28	24	49	59

INSPECTION WORKLOAD - MONTHLY

CATEGORY	Mar-17	Apr-17	May-17	Jun-17	Jul-17	Aug-17	Sep-17	Oct-17	Nov-17	Dec-17	Jan-18	Feb-18	Mar-18
<u>CONSTRUCTION</u>													
Locating Sewers	-	-	-	-	-	-	-	1	-	-	-	-	-
Permit Processing	-	-	-	1	-	-	-	-	-	-	-	-	-
Preconstruction Meetings	6	4	1	2	3	2	-	-	1	1	7	7	5
Inspections - Mains	6	1	-	4	-	-	2	-	-	5	-	20	6
Inspections - Manholes	15	61	1	9	3	3	40	72	45	62	41	38	13
Inspections - Laterals	50	14	3	8	11	8	6	2	7	15	23	26	23
Inspections - Cleanouts	74	25	-	2	4	3	4	4	11	10	31	36	24
Inspections - Review Video	-	-	2	-	3	-	-	-	-	-	-	-	1
Demo - Septic Tanks	-	-	-	-	-	-	-	-	-	-	-	-	-
Demo - Buildings	1	2	-	-	-	-	-	-	-	-	-	-	-
Update Record Drawings	-	-	-	-	-	-	-	-	-	-	-	-	-
TOTAL	152	107	7	26	24	16	52	79	64	93	102	127	72
<u>MISCELLANEOUS</u>													
Meter Readings	13	24	-	-	-	-	-	-	-	-	11	24	-
Washdown Facility Inspections	-	-	-	-	-	-	-	-	-	-	-	-	-
General Customer Assistance	10	12	11	30	34	28	30	31	30	25	26	18	38
City of Napa Water Discharge	-	-	-	-	-	-	-	-	-	-	0	-	-
TOTAL	23	36	11	30	34	28	30	31	30	25	37	42	38
<u>SPECIAL PROJECTS</u>													
	16	0	0	22	21	23	36	24	6	1	7	0	5

POLLUTION PREVENTION WORKLOAD - MONTHLY

CATEGORY	Mar-17	Apr-17	May-17	Jun-17	Jul-17	Aug-17	Sep-17	Oct-17	Nov-17	Dec-17	Jan-18	Feb-18	Mar-18
<u>Outreach Activities</u>													
Plant Tours Conducted	11	3	4	1	2	1	9	1	2	0	3	0	1
Presentations Made	1	1	5	1	0	0	3	0	0	0	0	0	2
Total Outreach Activities	12	4	9	2	2	1	12	1	2	-	3	-	3
<u>Inspections Conducted</u>													
Food Service Facilities	35	25	-	-	-	-	-	-	-	-	6	22	64
Auto Body & Car Wash	-	-	-	-	-	-	-	-	-	-	-	-	-
Other	-	-	-	-	-	-	-	-	1	-	-	-	-
Total Inspections	35	25	-	-	-	-	-	-	1	-	6	22	64
<u>Compliance Issues</u>													
NOVs Issued	4	-	-	1	-	-	1	2	-	1	-	3	2
NOEs Issued	1	-	1	-	-	1	1	1	-	1	1	3	-
Non-Compliant-FOG	1	-	-	-	-	-	-	-	-	1	-	-	-
Total Compliance Issues	6	-	1	1	-	1	2	3	-	3	1	6	2
<u>Pollution Prevention</u>													
Clothes Washer Rebates	-	-	28	21	1	1	19	-	-	-	25	14	21
Toilet Retrofit Rebates	7	1	2	7	16	6	3	-	-	-	-	-	-
Pharmaceuticals Diverted (in lbs)	210	185	302	368	-	-	-	59	63	-	35	-	82

RECYCLED WATER DELIVERIES - MONTHLY

	Acres	Mar-17	Apr-17	May-17	Jun-17	Jul-17	Aug-17	Sep-17	Oct-17	Nov-17	Dec-17	Jan-18	Feb-18	Mar-18
MONTHLY (MG)														
Water Sold														
Golf Courses	405.0	0.081	2.513	53.481	66.261	73.994	58.595	53.035	26.903	5.504	6.253	-	6.152	2.748
Cemeteries	57.1	-	-	0.705	0.754	0.834	1.116	0.634	0.833	0.193	0.003	-	0.005	0.154
Parks	18.5	0.002	0.001	0.624	1.020	0.902	0.866	0.650	0.333	0.020	-	-	-	-
Schools	21.0	0.005	0.013	1.396	2.604	2.250	2.178	1.613	1.485	0.195	0.019	-	0.255	0.198
Commerical	167.6	0.501	2.493	15.246	17.491	17.468	17.399	15.227	13.665	4.387	1.402	-	1.835	1.765
Vineyards	564.0	0.101	7.119	4.868	10.709	19.143	30.814	18.019	16.506	1.766	0.225	-	5.695	21.988
Trucked Water	175.0	0.015	0.018	0.027	0.051	0.474	0.602	0.274	0.197	0.030	0.014	-	0.017	0.029
Subtotal Sales	1,408.2	0.705	12.156	76.347	98.891	115.065	111.571	89.451	59.922	12.095	7.916	-	13.960	26.881
District Use														
Jameson	330.0	0.087	0.032	-	-	7.298	18.483	20.751	-	-	-	-	0.077	-
Somky	213.0	0.002	-	6.256	11.738	11.488	13.426	19.372	10.364	-	-	-	-	-
Fagundes/Airport	50.5	-	-	-	-	-	-	-	-	-	-	-	-	-
Subtotal District	593.5	0.089	0.032	6.256	11.738	18.786	31.910	40.122	10.364	-	-	-	0.077	-
TOTAL DELIVERED	2,001.7	0.794	12.188	82.603	110.628	133.851	143.481	129.574	70.286	12.095	7.916	-	14.037	26.881
ANNUAL (AF)														
Water Sold														
Golf Courses	405.0	969	936	985	1,013	1,047	1,033	1,044	1,048	1,045	1,064		1,083	1,091
Cemeteries	57.1	14	14	14	14	14	15	13	15	16	16		16	16
Parks	18.5	16	16	16	16	14	13	13	13	14	14		14	14
Schools	21.0	34	33	32	32	32	33	33	36	36	36		37	37
Commerical	167.6	299	287	300	301	309	309	310	322	325	328		329	333
Vineyards	564.0	264	270	279	270	281	308	310	342	336	336		353	420
Trucked Water	175.0	5	4	4	4	5	5	5	6	6	5		5	5
Subtotal Sales	1,408.2	1,600	1,559	1,630	1,650	1,702	1,717	1,728	1,782	1,778	1,799	-	1,835	1,916
District Use														
Jameson	330.0	163	163	163	158	164	183	182	143	143	143		143	143
Somky	213.0	222	222	241	268	254	230	222	223	223	223		223	223
Fagundes/Airport	50.5	-	-	-	-	-	-	-	-	-	-		-	-
Subtotal District	593.5	385	385	404	427	419	413	404	366	366	366	-	366	366
TOTAL DELIVERED	2,001.7	1,985	1,945	2,034	2,077	2,121	2,130	2,132	2,148	2,144	2,165	-	2,202	2,282

BIOSOLIDS HANDLING - MONTHLY

Site	Mar-17	Apr-17	May-17	Jun-17	Jul-17	Aug-17	Sep-17	Oct-17	Nov-17	Dec-17	Jan-18	Feb-18	Mar-18
<u>Land Applied by NSD</u>													
Somky													
Airport/Fagundes													
Jameson Canyon	-	-	-	370	442	153	184	65	68	11	8	-	-
Subtotal by NSD	-	-	-	370	442	153	184	65	68	11	8	-	-
<u>Land Applied by Contractor</u>													
Somky													
Airport/Fagundes													
Jameson Canyon													
Subtotal by Contractor	-	-	-	-	-	-	-	-	-	-	-	-	-
Total Land Applied	-	-	-	370	442	153	184	65	68	11	8	-	-
Off Site (Contractor)													
Total (tons)	-	-	-	370	442	153	184	65	68	11	8	-	-

COLLECTION SYSTEM MAINTENANCE - MONTHLY

CATEGORY	Mar-17	Apr-17	May-17	Jun-17	Jul-17	Aug-17	Sep-17	Oct-17	Nov-17	Dec-17	Jan-18	Feb-18	Mar-18
Plugups													
Total Calls	61	39	37	44	43	36	42	54	63	48	62	49	67
Business Hours	43	25	21	25	25	27	26	33	38	27	40	35	53
After Hours	18	14	16	19	18	9	16	21	25	21	22	14	16
District's	21	10	10	12	16	10	17	25	20	19	22	16	15
Property Owner's	40	29	27	32	27	26	25	29	43	29	40	33	40
Plugged Main Lines													1
Run Lateral w/Eel	215	116	188	85	139	191	87	103	70	101	86	98	190
Cleaning (feet of sewer)													
Vactor #1	52,800	10,888	56,860	35,077	18,053	17,179	38,849	7,417	21,500	33,612	55,782	33,391	51,027
Vactor #2	34,405	53,959	7,819	44,357	41,749	58,712	35,140	50,621	17,254	8,642	50,441	41,842	51,666
Hydro										1,251			
Rodder											765		
Total (feet)	87,205	64,846	64,679	79,433	59,802	75,891	73,989	58,038	38,754	43,505	106,988	75,233	102,693
Cleaning Days													
Vactor #1	14	5	16	12	8	8	14	3	10	14	18	11	15
Vactor #2	11	17	4	16	13	23	11	18	10	5	14	13	18
Hydro													
Rodder											1		
Feet/day	3,500	2,950	3,250	2,850	2,850	2,450	2,950	2,750	1,950	2,300	3,250	3,150	3,100
Vactor #1	3,750	2,200	3,550	2,900	2,250	2,150	2,750	2,450	2,150	2,400	3,100	3,050	3,400
Vactor #2	3,150	3,150	1,950	2,750	3,200	2,550	3,200	2,800	1,750	1,750	3,600	3,200	2,850
Hydro													
Rodder											750		
Video Inspections													
Mains (feet)	17,209	15,580	25,066	24,881	15,731	15,789			10,767	6,320	17,644	12,878	21,714
Laterals (each)	324	249	251	205	265	246	170	184	172	186	114	122	211
Construction (each)													
Cleanouts	16	4	16	7	31	17	7	4	6	11	15	16	8
Laterals	4	3	4	15		9	1	1	1	1	1	4	1
Mains										1		1	
Manholes	1												
Other			50			2		57	79				
USA Markings													
Regular (w/in 2 days)	254	305	297	258	215	264	233	252	363	210	281	277	266
Emergency (w/in 2 hours)	13	8	3	6	5	3	7	33	9	13	15	3	18

WASTEWATER PLANT OPERATIONS DATA - MONTHLY

CATEGORY	Units	Mar-17	Apr-17	May-17	Jun-17	Jul-17	Aug-17	Sep-17	Oct-17	Nov-17	Dec-17	Jan-18	Feb-18	Mar-18
FLOWES		31	30	31	30	31	31	30	31	30	31	31	28	31
Influent	MG	394.1	353.8	234.9	206.4	201.5	199.7	191.6	183.0	205.5	186.3	254.0	189.3	347.0
Average Day	MGD	12.7	11.8	7.6	6.9	6.5	6.4	6.4	5.9	6.9	6.0	8.2	6.8	11.2
Maximum Day	Date	23-Mar	9-Apr	1-May	11-Jun	4-Jul	21-Aug	18-Sep	11-Oct	17-Nov	1-Dec	10-Jan	1-Feb	23-Mar
Maximum Day Flow	MG	23.3	23.4	8.5	7.2	6.8	6.7	6.7	6.4	14.0	6.7	16.7	7.6	22.2
Minimum Day	Date	20-Mar	30-Apr	24-May	30-Jun	31-Jul	30-Aug	4-Sep	1-Oct	1-Nov	26-Dec	2-Jan	24-Feb	1-Mar
Minimum Day Flow	MG	8.9	8.6	7.1	6.6	6.4	6.3	6.2	5.2	5.6	5.3	5.7	6.3	6.4
Effluent	MG	730.8	480.3	98.9	117.1	146.3	158.0	142.9	80.0	314.7	169.1	302.3	176.2	415.7
River Discharge	MG	725.8	463.4	-	-	-	-	-	-	305.8	163.8	302.0	164.6	398.9
Recycled Flow	MG	5.0	16.8	98.9	123.3	134.0	158.0	142.9	73.0	8.9	5.3	0.3	14.4	23.0
BIOSOLIDS	Tons	488	568	507	639	521	952	703	612	731	617	713	770	836
Wet Tons Generated from Pond	Tons													
Wet Tons Generated from Plant	Tons	488	568	507	639	521	952	703	612	731	617	713	770	836
% Solids Liquid	%													
% Solids Cake	%													
% Solids Land Application	%													
Wet Tons Hauled Offsite	Tons													
POLYMER USE	Gallons	1,979	4,644	6,112	9,760	4,352	1,987	3,927	3,051	15,506	1,939	3,839	3,931	3,764
Pond Pre-Flocculators	Gallons	-	2,676	-	-	-	-	-	-	11,711		2,460	-	-
Flocculator Polymer 1	Gallons													
Flocculator Polymer 2	Gallons	1,325	720	-	-	-	-	115	-	-	250	589	253	1,033
Filter Polymer 1	Gallons	47	746	5,662	8,984	3,739	914	3,077	2,358	830	728		3,019	1,963
Filter Polymer 2	Gallons										151	790		
Belt Presses	Gallons	607	502	450	776	613	1,073	735	693	784	810	13	659	769
ENERGY														
Total Electricity Used	MWH	749	759	713	739	807	849	870	747	719	658	673	684	759
Purchased from PGE	MWH	583	378	330	338	412	469	476	367	433	287	311	270	350
Produced from Co-Gen	MWH	166	245	213	225	203	253	248	251	236	273	288	286	269
Percent Produced	%	22%	32%	30%	30%	25%	30%	29%	34%	33%	41%	43%	42%	36%
Purchased from Solar	MWH	14	159	202	203	213	172	153	140	87	98	74	128	140
Percent Produced	%	2%	21%	28%	27%	26%	20%	18%	19%	12%	15%	11%	19%	18%
Purchased Natural Gas	Therms	205	50	21	51	858	56	60	19	99	91	2,404	1,214	166
Methane Flared Off	KSCF	986	56	15	225	127	156	164	5	82	192	523	733	79
Stand By Calls	#	63	42	55	86	48	44	78	36	47	66	23	43	40
Violations	#	-	-	-	-	-	-	-	-	-	-	-	-	-

WASTEWATER PLANT MAINTENANCE and LABORATORY DATA - MONTHLY

CATEGORY	Mar-17	Apr-17	May-17	Jun-17	Jul-17	Aug-17	Sep-17	Oct-17	Nov-17	Dec-17	Jan-18	Feb-18	Mar-18
<u>Scheduled</u>													
Old	43	40	75	41	37	28	17	33	33	61	39	27	39
New	106	91	87	90	72	78	78	86	82	56	117	59	82
Completed	109	56	121	94	81	89	62	86	54	78	129	41	109
New Balance	40	75	41	37	28	17	33	33	61	39	27	39	12
<u>Unscheduled</u>													
Old	48	48	61	46	47	45	38	43	34	44	40	35	38
New	21	24	24	56	29	40	32	21	37	19	18	16	24
Completed	21	11	39	55	31	47	27	30	27	23	23	13	32
New Balance	48	61	46	47	45	38	43	34	44	40	35	38	30
<u>Total Work Orders</u>													
Old	91	88	136	87	84	73	55	76	66	105	79	62	77
New	127	115	111	146	101	118	110	107	119	75	135	75	106
Completed	130	67	161	149	112	132	89	117	81	101	152	60	141
New Balance	88	136	87	84	73	55	76	67	105	79	62	77	42
<u>LAB ANALYSES</u>													
Sample Type													
Regulatory	210	218	177	230	173	193	194	156	178	163	123	190	208
Process Control	1,370	1,167	820	1,107	1,024	1,104	1,091	1,137	1,220	1,139	1,071	1,080	1,103
Special Request	1	-	6	200	-	-	7	8	4	6	4	2	4
Quality Control/Assurance	301	497	523	574	464	549	428	420	1,110	874	692	794	741
TOTAL	1,882	1,882	1,526	2,111	1,661	1,846	1,720	1,721	2,512	2,182	1,890	2,066	2,056

**Summary of NSD Capital Project Status
through 03-31-18**

Proj #	Description	FY 17-18 Budget	FY 16-17 Carryovers	Adj.	Final FY 17-18 Budget	Encumbrance	Costs Paid to Date	Budget Remaining	% Budget Expended
	<u>COLLECTION SYSTEM</u>								
13701	Main Line Sewer Rehab	91,800			91,800	-	27,660	64,140	30%
13702	Manhole Raising/Rehab	206,000			206,000	-	149,985	56,015	73%
13703	Lateral Replacement/Rehab	74,500			74,500	-	72,799	1,701	98%
13704	Cleanouts Installation/Rehab	90,000			90,000	457	68,047	21,496	76%
13705	I&I Reduction Program	207,000	29,000		236,000	189,777	20,346	25,878	9%
14703	Browns Valley Rd & First St	9,237,000	3,004,750	(1,000,000)	11,241,750	226,187	155,344	10,860,219	1%
17702	Upper Lateral Rehab - Basin L (Pilot #2)	155,300		(110,000)	45,300	-	23,687	21,613	52%
17704	Infltrtn Rehab - SSMH/PL (CI-)	-	73,900		73,900	-	-	73,900	-
17705	Soscol Ave (8th to Oil Co Rd)	950,000	415,450		1,365,450	25,437	1,323,432	16,581	97%
17707	66-inch Trunk CCTV Inspection	-	149,350	90,000	239,350	73,720	157,535	8,095	66%
17708	Basin G - I&I Reduction #1	2,942,000	1,504,100		4,446,100	538,934	3,551,928	355,238	80%
17734	Homewood/Westwood I/I Reduction	-	60,300		60,300	-	17,537	42,763	29%
18701	I&I Smoke Testing	100,000			100,000	-	-	100,000	-
18702	Collection System Asset Management Software	350,000			350,000	-	-	350,000	-
18703	Upper Lateral Rehab - Pilot #4	5,000			5,000	-	33	4,968	1%
18704	Manhole Rehab - Nipak - Basin H	284,600		(5,000)	279,600	-	182,437	97,163	65%
18705	Sewer System Inflow/Infiltration 2018	1,650,000		834,000	2,484,000	2,000,906	104,100	378,994	4%
18706	Sewer System Inflow/Infiltration 2019	20,000			20,000	-	1,119	18,881	6%
	<u>COLLECTION SYSTEM - EQUIPMENT</u>								
18707	Locatable Mini-Camera #2 Replacement	11,100			11,100	-	8,836	2,265	80%
18708	Manhole - Smart Covers (4)	25,000			25,000	-	2,398	22,602	10%
18709	Vehicle 504 - TV Truck	270,000			270,000	-	187,154	82,846	69%
18735	Permaliner Picote	-		20,000	20,000	-	15,476	4,524	77%
18738	Combination Truck Veh #529B	-		575,000	575,000	563,239	-	11,761	-
	<u>LIFT STATIONS</u>								
17711	West Napa PS - Rehab	-	1,746,365		1,746,365	901,209	58,618	786,538	3%
	<u>TREATMENT</u>								
13745	Pond 1 Dredge	400,000			400,000	26,725	1,047	372,229	0%
16708	Algae to Digester/Thermal Stdy	-	46,800		46,800	22,913	698	23,189	1%
	<u>TREATMENT - EQUIPMENT</u>								

**Summary of NSD Capital Project Status
through 03-31-18**

Proj #	Description	FY 17-18 Budget	FY 16-17 Carryovers	Adj.	Final FY 17-18 Budget	Encumbrance	Costs Paid to Date	Budget Remaining	% Budget Expended
13735	Dual Fuel Boiler Burner	155,300			155,300	-	-	155,300	-
13741	Secondary PS Pump Rebuild (3)	38,800			38,800	-	31,797	7,003	82%
13743	Risidual Analyzers (Deox) Replacements	5,000	3,500	40,000	48,500	-	43,925	4,575	91%
15711	Rotork Actuator Replacement	-	7,600		7,600	-	-	7,600	-
15713	Aeration Basin Instrmntn/Ctrl	-	10,000		10,000	-	3,280	6,720	33%
16714	High Voltage System Repairs	-	66,500	(66,500)	-	-	-	-	-
17713	Secondary PS VFD Rplcmnt (3)	55,400	51,150	(106,550)	-	-	-	-	-
17714	WWTP MP - 3W Sys Imprvmnts	440,000	36,100	(476,100)	-	-	-	-	-
17715	Turbidimeters (7) Tertiary Rplcmnts	20,000	15,400		35,400	14,041	19,405	1,954	55%
17718	Energy Audit - LED Pole/Arm Mounted Fixtures	-	44,750	(15,000)	29,750	4,297	267	25,186	1%
17725	Main - Sump #3 Modification	-	10,000		10,000	4,745	-	5,255	-
18710	3W Pipeline - Soscol PS to Plant - Rehab	33,300			33,300	-	-	33,300	-
18711	3W Strainer	83,200			83,200	-	-	83,200	-
18712	3W VFD	62,100		(62,100)	-	-	-	-	-
18713	Primary Influent Pipe - East Gallery	250,000		(250,000)	-	-	-	-	-
18714	Distillation System	6,000			6,000	-	-	6,000	-
18715	Muffle Furnace - Replacement	15,000		(10,000)	5,000	-	-	5,000	-
18716	Rotork Actuator Replacement	91,800			91,800	-	-	91,800	-
18717	Septage Card Reader Replacement	21,400			21,400	-	-	21,400	-
18718	Secondary Clarifier Mech/Struct Rehabilitation	50,000			50,000	-	50,000	-	100%
18719	Filter Flow Control - Rotork Valves	46,600			46,600	-	-	46,600	-
18720	Neuros Blowers Rebuild	62,100			62,100	-	-	62,100	-
18721	CCB #3 Effluent Gate	5,000		(5,000)	-	-	-	-	-
18722	FOG Station Water Heater	5,000			5,000	-	-	5,000	-
18723	Pond 4 PS - Repair Leak	24,000		(24,000)	-	-	-	-	-
18724	Filter 1-4 Air Valve	10,000		(10,000)	-	-	-	-	-
18725	Belt Press Hydraulic Actuator Replace	20,000			20,000	-	-	20,000	-
18734	Boat Motor Vehicle 302	-		10,000	10,000	-	7,407	2,593	74%
18739	Pond 1 Transformer Repair	-		25,000	25,000	-	16,463	8,537	66%
	TREATMENT - STRUCTURES								
17726	Headworks Equipment Rehab/Replacment	250,000	42,100		292,100	72,039	216,321	3,740	74%
18726	Building HVAC and Lab Ventilation	500,000		(500,000)	-	-	-	-	-
18727	Earthquake - Structural Repair	300,000		350,000	650,000	-	580,603	69,397	89%
18728	Roof Rplcmnt - Solids Handling/Digester Tower	232,900		(65,000)	167,900	2,000	164,935	965	98%

**Summary of NSD Capital Project Status
through 03-31-18**

Proj #	Description	FY 17-18 Budget	FY 16-17 Carryovers	Adj.	Final FY 17-18 Budget	Encumbrance	Costs Paid to Date	Budget Remaining	% Budget Expended
18736	Treatment Plant Project 2018	-		1,500,250	1,500,250	138,222	196,691	1,165,338	13%
18737	Flash Mixer Replacement	-		45,000	45,000	36,428	50	8,522	0%
	<u>SCADA</u>								
18729	SCADA MP Project #1 - Network Monitoring	50,000			50,000	-	163	49,838	0%
	<u>RECYCLING - DISTRICT</u>								
16716	Line Recycled Water Reservoir	1,800,000	169,550	650,000	2,619,550	307,094	1,556,718	755,738	59%
18730	Jameson 24" Flow Meter Rehab	6,200			6,200	-	-	6,200	-
18731	Coombsville Truck Fill Station	100,000			100,000	94	25,643	74,263	26%
	<u>RECYCLING - EXPANSION</u>								
13727	North Bay Wate Reuse Project	150,000			150,000	4,980	80,485	64,535	54%
14726	MST RW Pipeline Construction	-	5,000		5,000	-	2,573	2,427	51%
16722	MST RW Pipeline Extension	2,800,000	(158,465)		2,641,535	95,469	2,089,896	456,170	79%
	<u>OTHER</u>								
13729	Development Technical Support	239,900			239,900	-	233,135	6,765	97%
18732	Box Culvert - Fugundes Emergency Access	5,000			5,000	1,780	3,220	-	64%
18733	GPS Handheld	15,000			15,000	-	7,958	7,042	53%
GRAND TOTAL ALL PROJECTS		\$25,018,300	\$7,333,200	\$1,434,000	\$33,785,500	\$5,250,692	\$11,461,149	\$17,073,662	34%