



**Napa Sanitation District**

**General Manager's Report**

**for**

**December, 2017**

**Contents:**

- a. Transmittal Memo
- b. Budget Status and Cash Summary
- c. Key Information Graphs – Fund Balances, Treatment Plant and Collection
- d. Fund Balances
- e. Development Processing
- f. Construction Inspection
- g. Pollution Prevention
- h. Recycled Water Deliveries
- i. Biosolids Handling
- j. Collection System Maintenance
- k. Treatment Plant Operations
- l. Treatment Plant Maintenance & Laboratory
- m. Capital Project Expenditure Summary



## NAPA SANITATION DISTRICT

## General Manager's Report

*Dedicated to Preserving the Napa River for Generations to Come*

---

**DATE:** February 7, 2018

**FROM:** Timothy B. Healy, General Manager

**SUBJECT:** General Manager's Report for December, 2017

### **REGULATORY COMPLIANCE:**

Collection System Compliance:	0 Category 1 SSO's, 0 Category 2 SSO's, and 10 Category 3 SSO's
NPDES Permit (WWTP) Compliance:	Full compliance with all regulations
Air Quality Compliance:	Full compliance with all regulations
Recycled Water Compliance:	Full compliance with all regulations
Biosolids Compliance:	Full compliance with all regulations
Significant Comments:	None

### **FISCAL STATUS:**

Period Covered:	July 1, 2017 – December 31, 2017
Percent Fiscal Year:	50.0%
Operating Expenditures to date:	56.7%
Historical Expenditures to date:	52.9%
Significant Comments:	Sewer service charges were received from the first installment payments of the property taxes in December. The second installment will be due in April 2018.

### **PERSONNEL:**

Significant events for the month of December, 2017 in the Human Resources Department:

New Hires:	Nolan Weathers and Jorge Hernandez, Collection System Workers-in-Training; Nate Fua, Operator-in-Training; Simon Kobayashi, Associate Engineer; and Valentina Kravchuk, Lab Analyst I.
Separations:	None
Promotions:	Kevin Webster, promoted to Collection System Worker I
Recruitment Activities:	Finalizing and onboarding new hires above.
Injuries:	Kevin Webster, medical only – no lost time.

*Summaries of Operational Highlights are on following pages.*

### **COLLECTIONS:**

Significant events for the month of December 2017 in Collection System Maintenance include:

- The District had 0 Category 1 Sanitary Sewer Overflows (SSO's), 0 Category 2 SSO's and 10 Category 3 SSO's during the month. (A Category 1 is defined as an SSO that reached a drainage channel and/or surface water or; an SSO that reached a storm drain pipe that was not fully recovered and returned to the sanitary sewer system. A Category 2 is defined as an SSO that is equal to or greater than 1,000 gallons that did not reach a surface water. A Category 3 is defined as an SSO that is less than 1,000 gallons that did not reach a surface water. These are usually minor overflows of less than 10 gallons from cleanouts on District laterals that can be cleaned up by the crews.)
- The repair crew installed 8 cleanouts, repaired 1 cleanout, replaced 1 lateral and repaired 2 laterals. Additionally, the service response/programs crew completed 68 work orders in support of the grease and odor control program, responded to 53 customer requests for service (19 were NSD problem) and closed out 231 mark and locate request tickets.
- The preventative maintenance crews ran work orders on 102 laterals, cleaned approximately 42,254 feet of main line, power rodded 1,250 of main line and CCTV inspected 37 laterals. Also, the CCTV truck televised 12,705 feet of mainline.
- The repair crew also replaced 68' of mainline at the Lincoln apartments. This was a difficult excavation due to the depth (7') as well as dealing with the other utilities that were in conflict.

### **TREATMENT PLANT:**

Significant events for the month of December 2017 in the Treatment Plant Department:

#### **Plant Operations:**

- For December 2017, the plant's influent flow was 186 MG as compared to last year flow for December 2016 of 346 MG
- Flow to the Napa River for December 2017 was 169 MG compared to last year's flow of 370 MG.
- The production of recycle quality occurred for 7 days during December 2017 with a total distributed flow of 5.31 MG.
- There was 0.04" rain fall for December 2017 as compared to 4.0" rain fall for December 2016.
- Pond 4 end of the month recorded level reading was 36.81" as compared to December 2016 of 33.61". Total remaining pond capacity for December 2017 was 52% as compared to December 2016 remaining capacity of 46.1%.

Power Consumption and Production:

- This December power consumption purchased from PG&E was 287 MWH in comparison to December 2016 purchase of 630 MWH ( The cogeneration unit was offline last year during December for overhaul).
- Cogeneration unit ran 744 of 744 hours for the month – 100% uptime, averaging 354.38Kw
- Solar generation in December was 98 MWH, compared to 87 MWH in November.

Maintenance:

Significant events for the month of December, 2017:

Process Maintenance

- Cogeneration unit monthly emission test - in compliance with BAAQMD permit.
- Replaced motor in Headworks exhaust fan 102
- Replaced Headworks sump pump 062
- Replaced six plug valves at FOG receiving station

Projects

- Installed air flow switches on Primary exhaust fans
- Completed CIP 18728/ roof replacement of Solids Handling and Digester Tower
- Completed annual Boiler Service

Standby Power

- Plant generators operational testing only
- Riverpark, West Napa operational testing only
- Stonecrest ran for 4.5 hours under emergency use

Influent Pumps

- All pumps operational

Laboratory:

- There were no violations of Effluent limits during the month of December, 2017. All parameters were monitored at the required frequencies. The following were notable sampling events:
  - December 5, 2017: Metals, Cyanide, Mercury, Nutrients
  - December 4-8 2017: Acute Toxicity Bioassay
  - December 12, 2017: Nutrients

- Monthly Influent monitoring of all parameters occurred at the required frequencies. The following were notable sampling events:
  - December 5, 2017: Metals, Cyanide, Mercury, VOC, BNA
- Monthly Recycle Effluent monitoring was conducted on December 7, 2017.

#### **RECYCLING:**

Significant events in the Recycling Department for December 2017 include:

- Staff continued with annual Recycled Water Use Site inspections.
- Recycled water delivered for the month of December 2017 (7.916 million gallons), as compared to December 2016 (0.988 million gallons) is higher due to golf course and commercial landscape demand. Delivered recycled water volume represents the sum of all use site flow meter consumption values.
- Staff approved three connections to the recycled water system. Two customers in the LCWD area and one in the MST area.
- Staff continued land application of biosolids at the Jameson Reuse Site for a portion of the month and ceased land application due to wet weather. Staff initiated biosolids encapsulating operations for the remainder of the month.

#### **POLLUTION PREVENTION:**

Significant events in the Pollution Prevention and Outreach Division for December 2017 include:

- There were no tours or presentations given in December.
- The Napa Safe Medication Collection Program collected has resumed and we are contracting with DEA-registered Reverse Distributor, Assured Waste Solutions to pick up discarded medications at Family Drug. The total amount of unneeded medications collected since program inception in September 2010 is 20,924.2 pounds.
- The District did not issue any Toilet Rebates or ESME Washer Rebates this month.

#### **ENGINEERING / CAPITAL PROJECTS / DEVELOPMENT:**

Significant events occurring in the Engineering Division for December 2017 include:

- Consultant continued design of the West Napa Pump Station Rehabilitation Project.
- Consultant continued design of the Headworks Equipment Replacement Project.
- Contractor continued construction of the Recycled Water Reservoir Improvements Project.
- Staff completed design and issued Notice Inviting Bids for the 2018 Collection System Rehabilitation Project.
- Consultant continued design of the Browns Valley Trunk Project.
- Consultant continued design of the Pond 1 Dredge Project.

- Consultant continued design of the 2018 Treatment Plant Improvements Project
- Consultant and Staff continued work on Phase 1A of the Asset Management Program.
- Contractor continued construction of the MST Recycled Water Pipeline Expansion Project.
- Contractor continued construction of the 2017 Collection System Rehabilitation Project.
- Contractor completed construction of the Basin H Manhole Rehabilitation Project.
- Contractor completed construction of the Earthquake Repair Project.
- During the month of November, staff reviewed 27 sets of development plans and deemed 12 sets of plans complete. The approved plans consisted of three commercial buildings, six tenant improvements, one public laterals, one public lateral and one recycled water laterals.
- During the month of December, staff reviewed 28 sets of development plans and deemed 17 sets of plans complete. The approved plans consisted of three commercial buildings, four residential buildings, eight tenant improvements, and two recycled water laterals.

**Budget Status & Cash Summary - July 1, 2017 - December 31, 2017 (50.0% of the year)**

<i>Expenditures</i>	<b>FY 17-18 Budget</b>	<b>Encumbrances</b>	<b>Expenditures to date</b>	<b>Committed to date</b>	<b>Remaining Balance</b>	<b>Percent Committed</b>
<b>Operating</b>						
Salaries & Benefits	\$9,581,300	\$2,148	\$4,312,051	\$4,314,199	\$5,267,101	45.0%
Services & Supplies	6,054,300	1,297,964	2,439,479	3,737,443	2,316,857	61.7%
Taxes	28,650	-	14,355	14,355	14,295	50.1%
Debt Service	4,777,450	-	4,116,803	4,116,803	660,647 (1)	86.2%
Intrafund Transfers	8,900,000	-	4,450,000	4,450,000	4,450,000	50.0%
<b>Total Operating:</b>	<b>\$29,341,700</b>	<b>\$1,300,113</b>	<b>\$15,332,687</b>	<b>\$16,632,800</b>	<b>\$12,708,900</b>	<b>(2) 56.7%</b>
<b>Capital</b>						
Bldgs/Improvements & Equip	\$33,210,500	\$5,345,816	\$6,931,617	\$12,277,433	\$20,933,067 (3)	37.0%
Intrafund Transfers	3,630,000	-	3,630,000	3,630,000	-	100.0%
<b>Total Capital :</b>	<b>\$36,840,500</b>	<b>\$5,345,816</b>	<b>\$10,561,617</b>	<b>\$15,907,433</b>	<b>\$20,933,067</b>	<b>43.2%</b>
<b>Grand Total Expenditures:</b>	<b>\$66,182,200</b>	<b>\$6,645,929</b>	<b>\$25,894,304</b>	<b>\$32,540,233</b>	<b>\$33,641,967</b>	<b>49.2%</b>

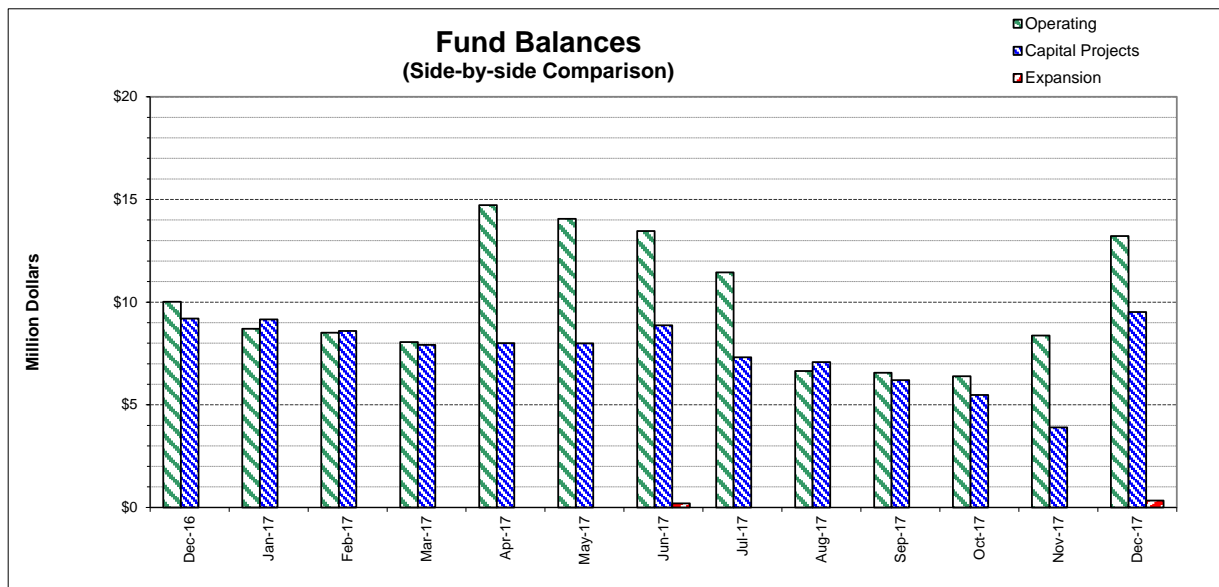
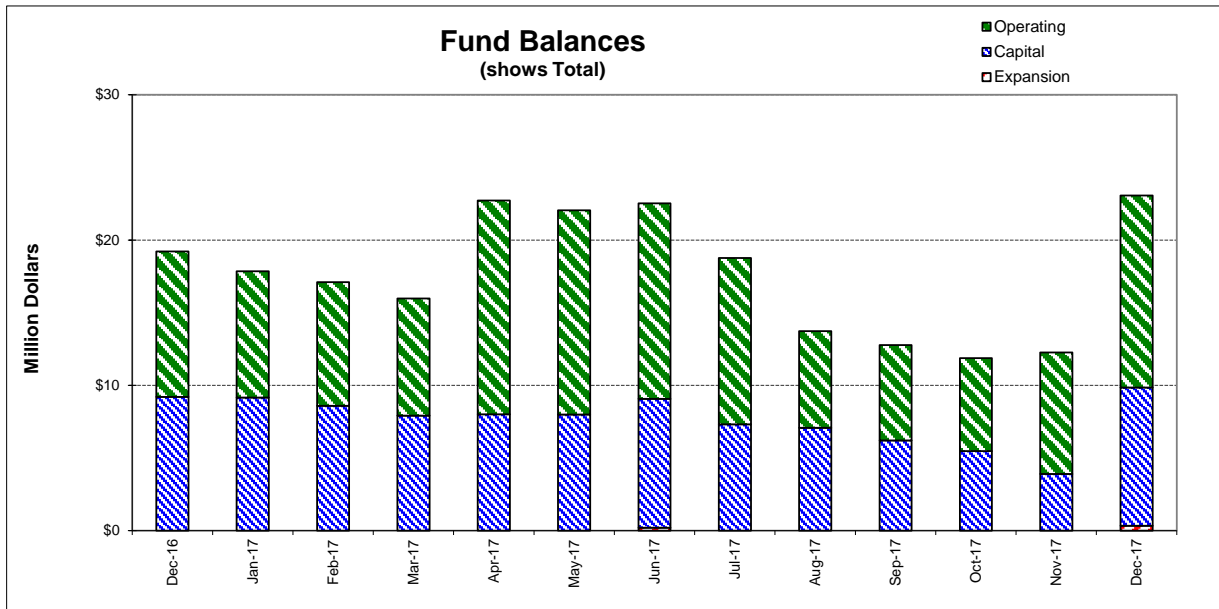
<i>Revenues</i>	<b>FY 17-18 Budget</b>	<b>Encumbrances</b>	<b>Collected to date</b>	<b>Received to Date</b>	<b>Uncollected Revenue</b>	<b>Percent Collected</b>
<b>Operating</b>						
Use of Money/Property	\$896,000		\$438,068	\$438,068	\$457,932	48.9%
Intergovernmental	\$15,000		\$0	-	15,000	N/A
Charges for Services	27,429,100		15,191,963	15,191,963	12,237,137	55.4%
Miscellaneous Revenues	61,000		386,114	386,114	(325,114) (4)	633.0%
Donations/Contributions (Capital Labor)	-		415,278	415,278	(415,278) (5)	N/A
<b>Total Operating:</b>	<b>\$28,401,100</b>		<b>\$16,431,423</b>	<b>\$16,431,423</b>	<b>\$11,969,677</b>	<b>57.9%</b>
<b>Capital</b>						
Use of Money/Property	\$0		\$1,721	\$1,721	(\$1,721)	N/A
Capacity Charges	3,630,000		3,769,552	3,769,552	(139,552)	103.8%
Intergovernmental	4,076,000		1,282,138	1,282,138	2,793,862	31.5%
Bond/Loan Proceeds	10,137,000		-	-	10,137,000	0.0%
Sale of Assets	25,000		7,820	7,820	17,180	N/A
Miscellaneous Revenues	-		6,870	6,870	(6,870)	N/A
Intrafund Transfers	12,530,000		8,080,000	8,080,000	4,450,000	64.5%
<b>Total Capital:</b>	<b>\$30,398,000</b>		<b>\$13,148,101</b>	<b>\$13,148,101</b>	<b>\$17,249,899</b>	<b>43.3%</b>
<b>Grand Total Revenue:</b>	<b>\$58,799,100</b>		<b>\$29,579,525</b>	<b>\$29,579,525</b>	<b>\$29,219,575</b>	<b>50.3%</b>

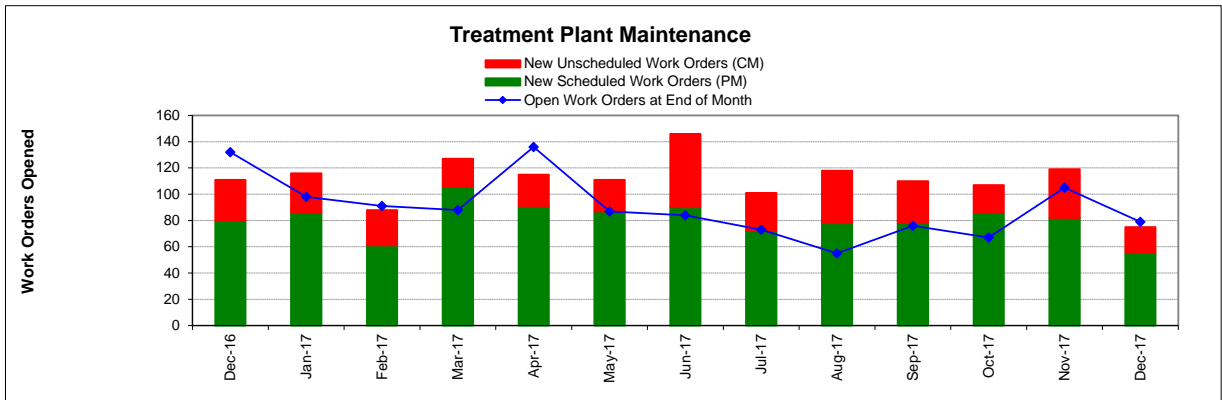
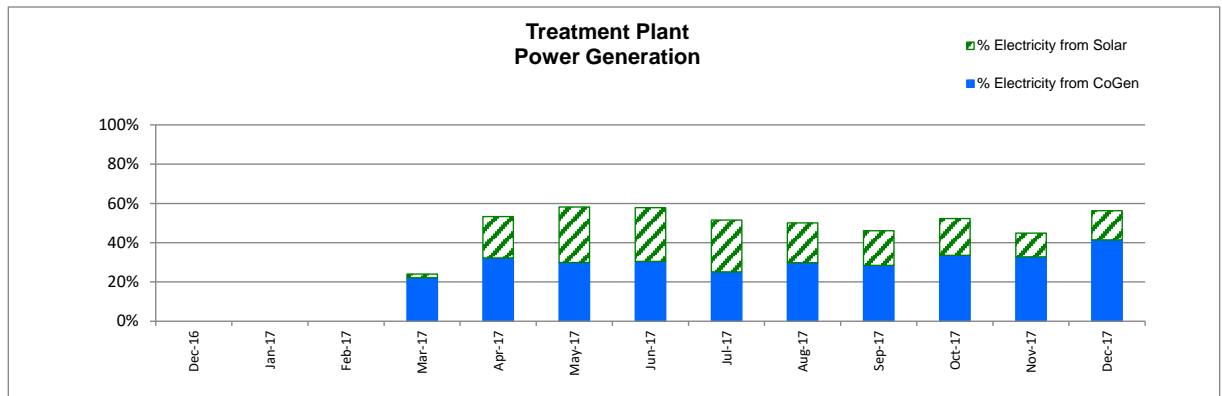
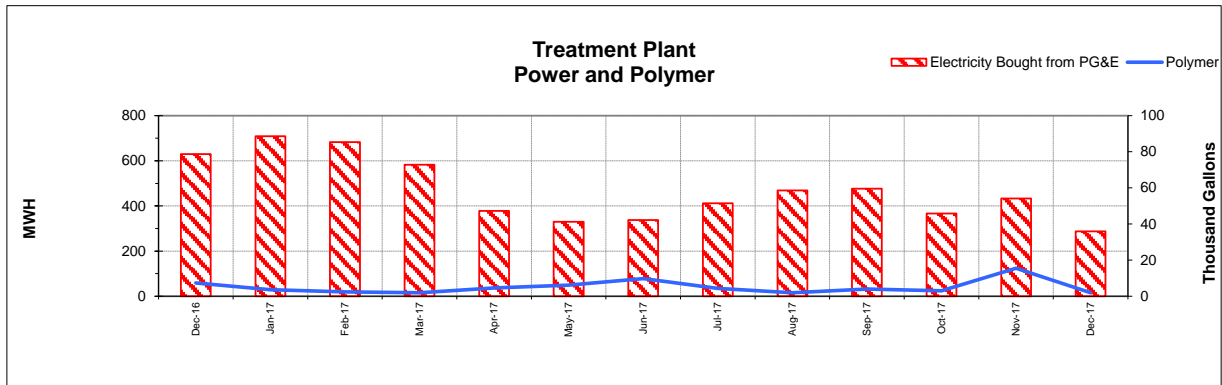
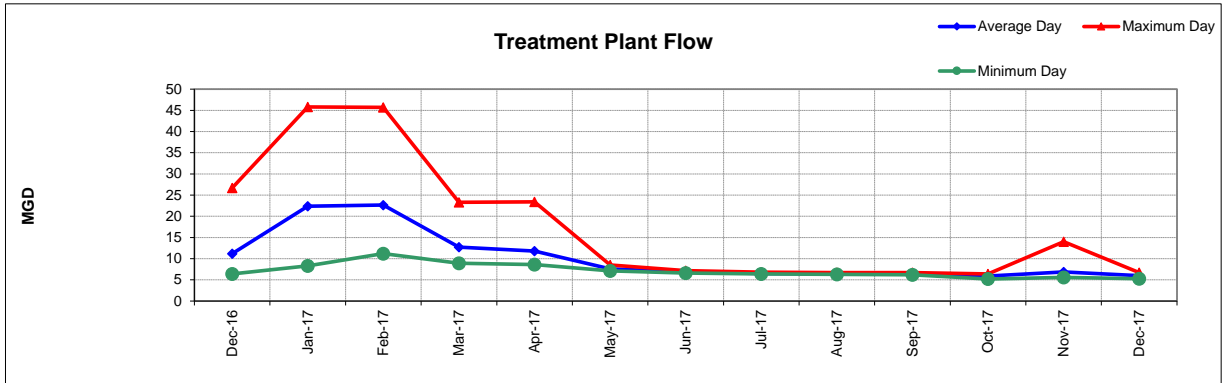
**Cash on Hand as of 12/31/17** **\$23,065,754**

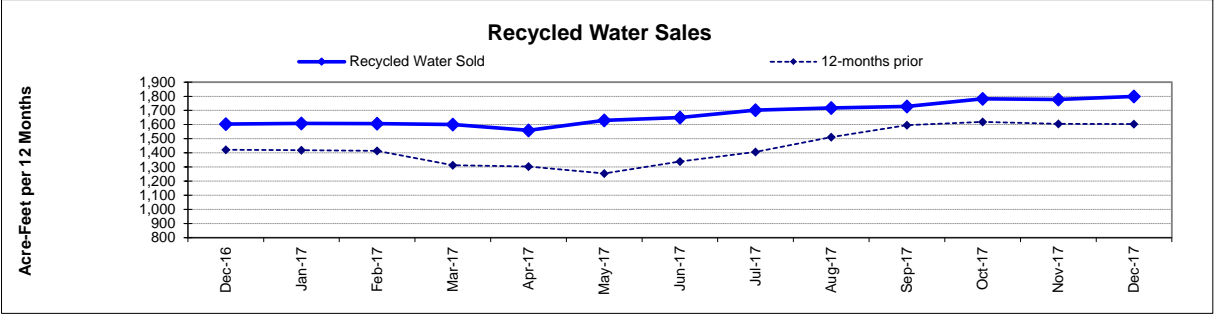
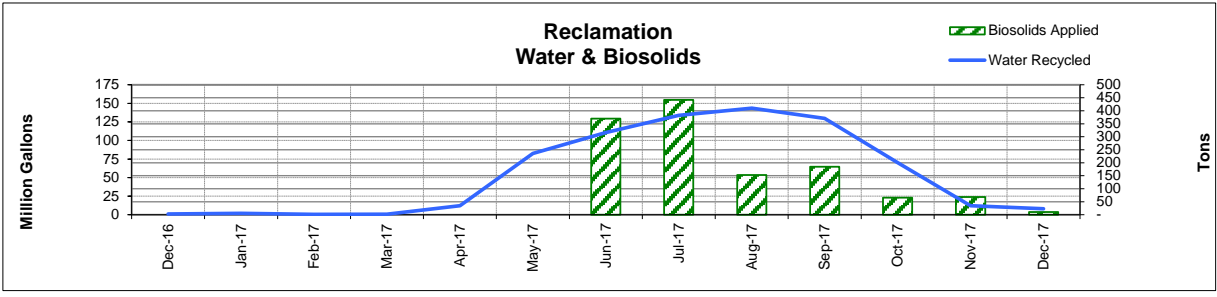
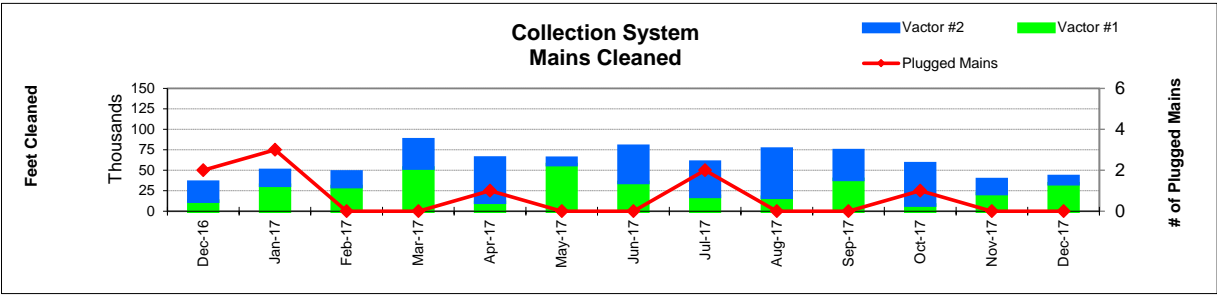
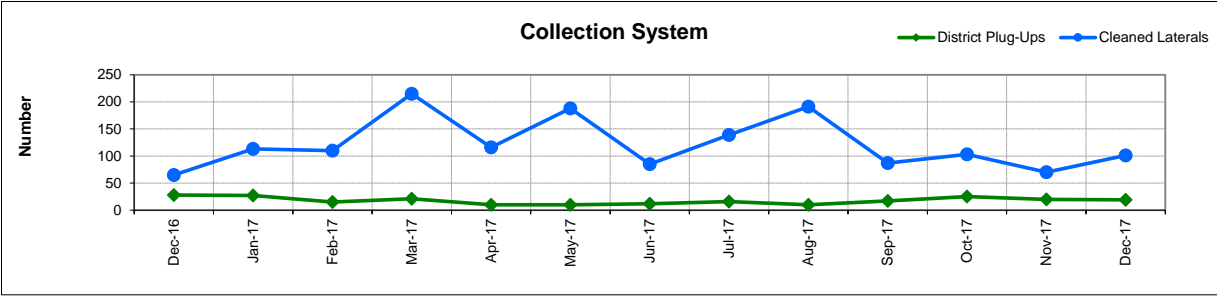
\*\*excluding Debt Service restricted funds

12/31/17 -Effective Rate of Return = 1.30%

1. Series 2009B's and 2012A's principal/interest payments are made in Aug & Feb
2. Includes Debt Service and Intrafund Transfers; otherwise is 51.5%
3. See Capital Project Status report for details
4. Includes reimbursement from NBWRA from FY 16-17
5. In-house Labor for Capital Projects (Contra acct for Salaries)







**FUND BALANCES - MONTHLY**

<b>CATEGORY</b>	<b>Dec-16</b>	<b>Jan-17</b>	<b>Feb-17</b>	<b>Mar-17</b>	<b>Apr-17</b>	<b>May-17</b>	<b>Jun-17</b>	<b>Jul-17</b>	<b>Aug-17</b>	<b>Sep-17</b>	<b>Oct-17</b>	<b>Nov-17</b>	<b>Dec-17</b>
<i>(Thousand Dollars)</i>													
7800	10,012	8,701	8,506	8,055	14,722	14,059	13,463	11,450	6,645	6,560	6,395	8,372	13,220
7850	-	-	-	-	-	-	-	-	-	-	-	-	-
<b>Subtotal Operating</b>	<b>10,012</b>	<b>8,701</b>	<b>8,506</b>	<b>8,055</b>	<b>14,722</b>	<b>14,059</b>	<b>13,463</b>	<b>11,450</b>	<b>6,645</b>	<b>6,560</b>	<b>6,395</b>	<b>8,372</b>	<b>13,220</b>
Capital Improvement Projects	9,204	9,154	8,598	7,921	8,001	7,995	8,867	7,312	7,083	6,205	5,480	3,897	9,514
Debt Proceeds	-	-	-	-	-	-	-	-	-	-	-	-	-
<b>Subtotal Capital</b>	<b>9,204</b>	<b>9,154</b>	<b>8,598</b>	<b>7,921</b>	<b>8,001</b>	<b>7,995</b>	<b>8,867</b>	<b>7,312</b>	<b>7,083</b>	<b>6,205</b>	<b>5,480</b>	<b>3,897</b>	<b>9,514</b>
<b>Total Discretionary Funds</b>	<b>19,216</b>	<b>17,855</b>	<b>17,104</b>	<b>15,976</b>	<b>22,723</b>	<b>22,054</b>	<b>22,330</b>	<b>18,762</b>	<b>13,728</b>	<b>12,765</b>	<b>11,875</b>	<b>12,269</b>	<b>22,734</b>
Expansion Fund (Restricted)	-	-	-	-	-	-	202	-	-	-	-	-	332
<b>Total Restricted Funds</b>	<b>-</b>	<b>-</b>	<b>-</b>	<b>-</b>	<b>-</b>	<b>-</b>	<b>202</b>	<b>-</b>	<b>-</b>	<b>-</b>	<b>-</b>	<b>-</b>	<b>332</b>
<b>TOTAL ALL FUNDS</b>	<b>19,216</b>	<b>17,855</b>	<b>17,104</b>	<b>15,976</b>	<b>22,723</b>	<b>22,054</b>	<b>22,532</b>	<b>18,762</b>	<b>13,728</b>	<b>12,765</b>	<b>11,875</b>	<b>12,269</b>	<b>23,066</b>

# DEVELOPMENT WORKLOAD - MONTHLY

CATEGORY	Dec-16	Jan-17	Feb-17	Mar-17	Apr-17	May-17	Jun-17	Jul-17	Aug-17	Sep-17	Oct-17	Nov-17	Dec-17
<b><u>Phone Requests</u></b>													
Maps/Drawings	4	9	7	4	5	5	5	3	4	5	6	3	3
Lateral Permits	-	-	2	2	-	-	-	-	-	-	-	-	-
Policy Questions	6	6	10	6	4	10	19	11	6	4	7	8	6
Development Questions	47	45	60	63	62	91	95	51	71	28	39	40	23
Miscellaneous	4	8	6	6	8	8	10	11	3	3	2	3	10
<b>TOTAL</b>	<b>61</b>	<b>68</b>	<b>85</b>	<b>81</b>	<b>79</b>	<b>114</b>	<b>129</b>	<b>76</b>	<b>84</b>	<b>40</b>	<b>54</b>	<b>54</b>	<b>42</b>
<b><u>Counter Requests</u></b>													
Maps/Drawings	1	2	1	-	1	3	6	2	-	1	-	-	-
Lateral Permits	7	11	5	11	10	10	18	15	6	16	4	5	7
Policy Questions	-	3	2	1	-	5	2	5	2	2	2	1	2
Development Questions	4	9	13	5	15	29	21	8	14	8	7	9	9
Miscellaneous	2	3	1	-	1	5	6	2	2	2	3	-	1
<b>TOTAL</b>	<b>14</b>	<b>28</b>	<b>22</b>	<b>17</b>	<b>27</b>	<b>52</b>	<b>53</b>	<b>32</b>	<b>24</b>	<b>29</b>	<b>16</b>	<b>15</b>	<b>19</b>
<b><u>Initial Request (Referrals)</u></b>	<b>23</b>	<b>17</b>	<b>11</b>	<b>25</b>	<b>17</b>	<b>22</b>	<b>20</b>	<b>10</b>	<b>11</b>	<b>14</b>	<b>11</b>	<b>17</b>	<b>5</b>
<b><u>Connection Permits Issued</u></b>													
Residential Permits	-	-	1	3	1	1	12	1	4	2	1	1	5
Commercial Permits	3	-	1	3	1	4	2	2	5	4	2	2	3
Industrial Permits	-	-	-	-	-	-	-	-	-	-	-	-	-
<b>TOTAL PERMITS</b>	<b>3</b>	<b>-</b>	<b>2</b>	<b>6</b>	<b>2</b>	<b>5</b>	<b>14</b>	<b>3</b>	<b>9</b>	<b>6</b>	<b>3</b>	<b>3</b>	<b>8</b>
Residential Units	-	-	1	3	1	2	35	1	4	2	1	1	5
Commercial Units	3	-	3	-	1	4	7	2	6	4	2	2	3
<b>TOTAL UNITS</b>	<b>3</b>	<b>-</b>	<b>4</b>	<b>3</b>	<b>2</b>	<b>6</b>	<b>42</b>	<b>3</b>	<b>10</b>	<b>6</b>	<b>3</b>	<b>3</b>	<b>8</b>
<b><u>Annexations</u></b>													
Submitted	-	-	-	-	-	-	-	-	-	-	-	-	-
Acreage	-	-	-	-	-	-	-	-	-	-	-	-	-
<b><u>Plans Reviewed</u></b>													
<b><u>Subdivisions/Sites</u></b>													
First Submittal	2	10	2	4	11	6	8	10	5	10	6	2	3
Second Submittal	2	2	3	7	6	8	4	5	7	1	1	1	4
Third Submittal	3	2	1	5	1	2	8	4	2	1	7	2	3
<b><u>Building/Tenant Improvements</u></b>													
First Submittal	4	10	5	7	4	9	17	8	19	15	9	5	10
Second Submittal	4	5	2	5	4	4	5	9	6	5	9	10	3
Third Submittal	6	2	1	10	3	7	8	6	7	3	2	7	5
<b><u>Miscellaneous Plan Reviews</u></b>	<b>-</b>	<b>1</b>	<b>-</b>	<b>-</b>	<b>-</b>	<b>-</b>	<b>-</b>	<b>-</b>	<b>-</b>	<b>-</b>	<b>-</b>	<b>-</b>	<b>-</b>
<b>TOTAL PLANS REVIEWED</b>	<b>21</b>	<b>32</b>	<b>14</b>	<b>38</b>	<b>29</b>	<b>36</b>	<b>50</b>	<b>42</b>	<b>46</b>	<b>35</b>	<b>34</b>	<b>27</b>	<b>28</b>

# INSPECTION WORKLOAD - MONTHLY

CATEGORY	Dec-16	Jan-17	Feb-17	Mar-17	Apr-17	May-17	Jun-17	Jul-17	Aug-17	Sep-17	Oct-17	Nov-17	Dec-17
<b><u>CONSTRUCTION</u></b>													
Locating Sewers	-	-	-	-	-	-	-	-	-	-	1	-	-
Permit Processing	-	-	-	-	-	-	1	-	-	-	-	-	-
Preconstruction Meetings	5	9	6	6	4	1	2	3	2	-	-	1	1
Inspections - Mains	1	-	-	6	1	-	4	-	-	2	-	-	5
Inspections - Manholes	89	46	16	15	61	1	9	3	3	40	72	45	62
Inspections - Laterals	11	24	17	50	14	3	8	11	8	6	2	7	15
Inspections - Cleanouts	20	42	38	74	25	-	2	4	3	4	4	11	10
Inspections - Review Video	4	1	-	-	-	2	-	3	-	-	-	-	-
Demo - Septic Tanks	-	-	-	-	-	-	-	-	-	-	-	-	-
Demo - Buildings	-	2	-	1	2	-	-	-	-	-	-	-	-
Update Record Drawings	-	-	-	-	-	-	-	-	-	-	-	-	-
<b>TOTAL</b>	<b>130</b>	<b>124</b>	<b>77</b>	<b>152</b>	<b>107</b>	<b>7</b>	<b>26</b>	<b>24</b>	<b>16</b>	<b>52</b>	<b>79</b>	<b>64</b>	<b>93</b>
<b><u>MISCELLANEOUS</u></b>													
Meter Readings	18	100	-	13	24	-	-	-	-	-	-	-	-
Washdown Facility Inspections	-	-	-	-	-	-	-	-	-	-	-	-	-
General Customer Assistance	6	11	11	10	12	11	30	-	28	30	31	30	25
City of Napa Water Discharge	-	-	-	-	-	-	-	34	-	-	-	-	-
<b>TOTAL</b>	<b>24</b>	<b>111</b>	<b>11</b>	<b>23</b>	<b>36</b>	<b>11</b>	<b>30</b>	<b>34</b>	<b>28</b>	<b>30</b>	<b>31</b>	<b>30</b>	<b>25</b>
<b><u>SPECIAL PROJECTS</u></b>													
	2	0	6	16	0	0	22	21	23	36	24	6	1

# POLLUTION PREVENTION WORKLOAD - MONTHLY

CATEGORY	Dec-16	Jan-17	Feb-17	Mar-17	Apr-17	May-17	Jun-17	Jul-17	Aug-17	Sep-17	Oct-17	Nov-17	Dec-17
<b><u>Outreach Activities</u></b>													
Plant Tours Conducted	0	1	4	11	3	4	1	2	1	9	1	2	0
Presentations Made	0	1	2	1	1	5	1	0	0	3	0	0	0
<b>Total Outreach Activities</b>	-	2	6	12	4	9	2	2	1	12	1	2	-
<b><u>Inspections Conducted</u></b>													
Food Service Facilities	37	21	53	35	25	-	-	-	-	-	-	-	-
Auto Body & Car Wash	-	-	-	-	-	-	-	-	-	-	-	-	-
Other	-	-	-	-	-	-	-	-	-	-	-	1	-
<b>Total Inspections</b>	37	21	53	35	25	-	-	-	-	-	-	1	-
<b><u>Compliance Issues</u></b>													
NOVs Issued	2	-	1	4	-	-	1	-	-	1	2	-	1
NOEs Issued	2	-	1	1	-	1	-	-	1	1	1	-	1
Non-Compliant-FOG	-	-	1	1	-	-	-	-	-	-	-	-	1
<b>Total Compliance Issues</b>	4	-	3	6	-	1	1	-	1	2	3	-	3
<b><u>Pollution Prevention</u></b>													
Clothes Washer Rebates	26	28	21	-	-	28	21	1	1	19	-	-	-
Toilet Retrofit Rebates	12	5	4	7	1	2	7	16	6	3	-	-	-
Pharmaceuticals Diverted (in lbs)	63	332	201	210	185	302	368	-	-	-	59	63	-

# RECYCLED WATER DELIVERIES - MONTHLY

	Acres	Dec-16	Jan-17	Feb-17	Mar-17	Apr-17	May-17	Jun-17	Jul-17	Aug-17	Sep-17	Oct-17	Nov-17	Dec-17
<b>MONTHLY (MG)</b>														
<b>Water Sold</b>														
Golf Courses	405.0	0.002	0.245	-	0.081	2.513	53.481	66.261	73.994	58.595	53.035	26.903	5.504	6.253
Cemeteries	5.0	0.000	-	-	-	-	0.705	0.754	0.834	1.116	0.634	0.833	0.193	0.003
Parks	18.5	-	-	-	0.002	0.001	0.624	1.020	0.902	0.866	0.650	0.333	0.020	-
Schools	21.0	0.006	0.005	-	0.005	0.013	1.396	2.604	2.250	2.178	1.613	1.485	0.195	0.019
Commerical	167.6	0.490	1.191	0.404	0.501	2.493	15.246	17.491	17.468	17.399	15.227	13.665	4.387	1.402
Vineyards	564.0	0.302	0.194	0.063	0.101	7.119	4.868	10.709	19.143	30.814	18.019	16.506	1.766	0.225
Trucked Water	175.0	0.188	0.009	0.002	0.015	0.018	0.027	0.051	0.474	0.602	0.274	0.197	0.030	0.014
<b>Subtotal Sales</b>	<b>1,356.1</b>	<b>0.988</b>	<b>1.644</b>	<b>0.469</b>	<b>0.705</b>	<b>12.156</b>	<b>76.347</b>	<b>98.891</b>	<b>115.065</b>	<b>111.571</b>	<b>89.451</b>	<b>59.922</b>	<b>12.095</b>	<b>7.916</b>
<b>District Use</b>														
Jameson	330.0	-	0.089	-	0.087	0.032	-	-	7.298	18.483	20.751	-	-	-
Somky	213.0	-	-	-	0.002	-	6.256	11.738	11.488	13.426	19.372	10.364	-	-
Fagundes/Airport	50.5	-	-	-	-	-	-	-	-	-	-	-	-	-
<b>Subtotal District</b>	<b>593.5</b>	<b>-</b>	<b>0.089</b>	<b>-</b>	<b>0.089</b>	<b>0.032</b>	<b>6.256</b>	<b>11.738</b>	<b>18.786</b>	<b>31.910</b>	<b>40.122</b>	<b>10.364</b>	<b>-</b>	<b>-</b>
<b>TOTAL DELIVERED</b>	<b>1,949.6</b>	<b>0.988</b>	<b>1.733</b>	<b>0.469</b>	<b>0.794</b>	<b>12.188</b>	<b>82.603</b>	<b>110.628</b>	<b>133.851</b>	<b>143.481</b>	<b>129.574</b>	<b>70.286</b>	<b>12.095</b>	<b>7.916</b>
<b>ANNUAL (AF)</b>														
<b>Water Sold</b>														
Golf Courses	405.0	968	969	969	969	936	985	1,013	1,047	1,033	1,044	1,048	1,045	1,064
Cemeteries	5.0	14	14	14	14	14	14	14	14	15	13	15	16	16
Parks	18.5	16	16	16	16	16	16	16	14	13	13	13	14	14
Schools	21.0	34	34	34	34	33	32	32	32	33	33	36	36	36
Commerical	167.6	301	304	305	299	287	300	301	309	309	310	322	325	328
Vineyards	564.0	266	266	265	264	270	279	270	281	308	310	342	336	336
Trucked Water	175.0	5	5	5	5	4	4	4	5	5	5	6	6	5
<b>Subtotal Sales</b>	<b>1,356.1</b>	<b>1,603</b>	<b>1,609</b>	<b>1,607</b>	<b>1,600</b>	<b>1,559</b>	<b>1,630</b>	<b>1,650</b>	<b>1,702</b>	<b>1,717</b>	<b>1,728</b>	<b>1,782</b>	<b>1,778</b>	<b>1,799</b>
<b>District Use</b>														
Jameson	330.0	163	163	163	163	163	163	158	164	183	182	143	143	143
Somky	213.0	222	222	222	222	222	241	268	254	230	222	223	223	223
Fagundes/Airport	50.5	-	-	-	-	-	-	-	-	-	-	-	-	-
<b>Subtotal District</b>	<b>593.5</b>	<b>385</b>	<b>385</b>	<b>385</b>	<b>385</b>	<b>385</b>	<b>404</b>	<b>427</b>	<b>419</b>	<b>413</b>	<b>404</b>	<b>366</b>	<b>366</b>	<b>366</b>
<b>TOTAL DELIVERED</b>	<b>1,949.6</b>	<b>1,988</b>	<b>1,994</b>	<b>1,992</b>	<b>1,985</b>	<b>1,945</b>	<b>2,034</b>	<b>2,077</b>	<b>2,121</b>	<b>2,130</b>	<b>2,132</b>	<b>2,148</b>	<b>2,144</b>	<b>2,165</b>

# BIOSOLIDS HANDLING - MONTHLY

Site	Dec-16	Jan-17	Feb-17	Mar-17	Apr-17	May-17	Jun-17	Jul-17	Aug-17	Sep-17	Oct-17	Nov-17	Dec-17
<u>Land Applied by NSD</u>													
Somky													
Airport/Fagundes													
Jameson Canyon	-	-	-	-	-	-	370	442	153	184	65	68	11
Subtotal by NSD	-	-	-	-	-	-	370	442	153	184	65	68	11
<u>Land Applied by Contractor</u>													
Somky													
Airport/Fagundes													
Jameson Canyon													
Subtotal by Contractor	-	-	-	-	-	-	-	-	-	-	-	-	-
<b>Total Land Applied</b>	-	-	-	-	-	-	<b>370</b>	<b>442</b>	<b>153</b>	<b>184</b>	<b>65</b>	<b>68</b>	<b>11</b>
<b>Off Site (Contractor)</b>													
<b>Total (tons)</b>	-	-	-	-	-	-	<b>370</b>	<b>442</b>	<b>153</b>	<b>184</b>	<b>65</b>	<b>68</b>	<b>11</b>

# COLLECTION SYSTEM MAINTENANCE - MONTHLY

CATEGORY	Dec-16	Jan-17	Feb-17	Mar-17	Apr-17	May-17	Jun-17	Jul-17	Aug-17	Sep-17	Oct-17	Nov-17	Dec-17
<b><u>Plugups</u></b>													
<b>Total Calls</b>	84	75	51	61	39	37	44	43	36	42	54	63	48
Business Hours	54	49	30	43	25	21	25	25	27	26	33	38	27
After Hours	30	26	21	18	14	16	19	18	9	16	21	25	21
District's	28	27	15	21	10	10	12	16	10	17	25	20	19
Property Owner's	56	48	36	40	29	27	32	27	26	25	29	43	29
Plugged Main Lines	2	3											
Run Lateral w/Eel	65	113	110	215	116	188	85	139	191	87	103	70	101
<b><u>Cleaning (feet of sewer)</u></b>													
Vactor #1	12,220	31,694	30,016	52,800	10,888	56,860	35,077	18,053	17,179	38,849	7,417	21,500	33,612
Vactor #2	23,277	18,222	18,062	34,405	53,959	7,819	44,357	41,749	58,712	35,140	50,621	17,254	8,642
Hydro													1,251
Rodder													
<b>Total (feet)</b>	<b>35,497</b>	<b>49,915</b>	<b>48,077</b>	<b>87,205</b>	<b>64,846</b>	<b>64,679</b>	<b>79,433</b>	<b>59,802</b>	<b>75,891</b>	<b>73,989</b>	<b>58,038</b>	<b>38,754</b>	<b>43,505</b>
<b><u>Cleaning Days</u></b>													
<b>Cleaning Days</b>	<b>15</b>	<b>16</b>	<b>18</b>	<b>25</b>	<b>22</b>	<b>20</b>	<b>28</b>	<b>21</b>	<b>31</b>	<b>25</b>	<b>21</b>	<b>20</b>	<b>19</b>
Vactor #1	7	9	11	14	5	16	12	8	8	14	3	10	14
Vactor #2	8	7	7	11	17	4	16	13	23	11	18	10	5
Hydro													
Rodder													
<b><u>Feet/day</u></b>													
<b>Feet/day</b>	<b>2,350</b>	<b>3,100</b>	<b>2,650</b>	<b>3,500</b>	<b>2,950</b>	<b>3,250</b>	<b>2,850</b>	<b>2,850</b>	<b>2,450</b>	<b>2,950</b>	<b>2,750</b>	<b>1,950</b>	<b>2,300</b>
Vactor #1	1,750	3,500	2,750	3,750	2,200	3,550	2,900	2,250	2,150	2,750	2,450	2,150	2,400
Vactor #2	2,900	2,600	2,600	3,150	3,150	1,950	2,750	3,200	2,550	3,200	2,800	1,750	1,750
Hydro													
Rodder													
<b><u>Video Inspections</u></b>													
Mains (feet)	13,141	5,981	6,398	17,209	15,580	25,066	24,881	15,731	15,789				
Laterals (each)	191	203	175	324	249	251	205	265	246	170	184	172	186
<b><u>Construction (each)</u></b>													
Cleanouts	6	4	10	16	4	16	7	31	17	7	4	6	11
Laterals		1		4	3	4	15		9	1	1	1	1
Mains													1
Manholes				1									
Other						50			2		57	79	
<b><u>USA Markings</u></b>													
Regular (w/in 2 days)	160	151	186	254	305	297	258	215	264	233	252	363	210
Emergency (w/in 2 hours)	18	7	7	13	8	3	6	5	3	7	33	9	13

## WASTEWATER PLANT OPERATIONS DATA - MONTHLY

CATEGORY	Units	Dec-16	Jan-17	Feb-17	Mar-17	Apr-17	May-17	Jun-17	Jul-17	Aug-17	Sep-17	Oct-17	Nov-17	Dec-17
<b>FLOWES</b>		<b>31</b>	<b>31</b>	<b>28</b>	<b>31</b>	<b>30</b>	<b>31</b>	<b>30</b>	<b>31</b>	<b>31</b>	<b>30</b>	<b>31</b>	<b>30</b>	<b>31</b>
<b>Influent</b>	<b>MG</b>	<b>346.3</b>	<b>693.3</b>	<b>634.5</b>	<b>394.1</b>	<b>353.8</b>	<b>234.9</b>	<b>206.4</b>	<b>201.5</b>	<b>199.7</b>	<b>191.6</b>	<b>183.0</b>	<b>205.5</b>	<b>186.3</b>
<b>Average Day</b>	<b>MGD</b>	<b>11.2</b>	<b>22.4</b>	<b>22.7</b>	<b>12.7</b>	<b>11.8</b>	<b>7.6</b>	<b>6.9</b>	<b>6.5</b>	<b>6.4</b>	<b>6.4</b>	<b>5.9</b>	<b>6.9</b>	<b>6.0</b>
Maximum Day	Date	16-Dec	10-Jan	7-Feb	23-Mar	9-Apr	1-May	11-Jun	4-Jul	21-Aug	18-Sep	11-Oct	17-Nov	1-Dec
Maximum Day Flow	MG	26.7	45.8	45.7	23.3	23.4	8.5	7.2	6.8	6.7	6.7	6.4	14.0	6.7
Minimum Day	Date	7-Dec	1-Jan	1-Feb	20-Mar	30-Apr	24-May	30-Jun	31-Jul	30-Aug	4-Sep	1-Oct	1-Nov	26-Dec
Minimum Day Flow	MG	6.4	8.3	11.2	8.9	8.6	7.1	6.6	6.4	6.3	6.2	5.2	5.6	5.3
<b>Effluent</b>	<b>MG</b>	<b>369.9</b>	<b>529.2</b>	<b>718.6</b>	<b>730.8</b>	<b>480.3</b>	<b>98.9</b>	<b>117.1</b>	<b>146.3</b>	<b>158.0</b>	<b>142.9</b>	<b>80.0</b>	<b>314.7</b>	<b>169.1</b>
River Discharge	MG	357.6	529.2	718.6	725.8	463.4	-	-	-	-	-	-	305.8	163.8
Recycled Flow	MG	12.2	-	-	5.0	16.8	98.9	123.3	134.0	158.0	142.9	73.0	8.9	5.3
<b>BIOSOLIDS</b>	<b>Tons</b>	<b>658</b>	<b>439</b>	<b>355</b>	<b>488</b>	<b>568</b>	<b>507</b>	<b>639</b>	<b>521</b>	<b>952</b>	<b>703</b>	<b>612</b>	<b>731</b>	<b>617</b>
Wet Tons Generated from Pond	Tons													
Wet Tons Generated from Plant	Tons	658	439	355	488	568	507	639	521	952	703	612	731	617
Wet Tons Hauled Offsite	Tons													
<b>POLYMER USE</b>	<b>Gallons</b>	<b>7,306</b>	<b>3,670</b>	<b>2,394</b>	<b>1,979</b>	<b>4,644</b>	<b>6,112</b>	<b>9,760</b>	<b>4,352</b>	<b>1,987</b>	<b>3,927</b>	<b>3,051</b>	<b>15,506</b>	<b>1,939</b>
Pond Pre-Flocculators	Gallons	3,966	2,003	-	-	2,676	-	-	-	-	-	-	11,711	
Flocculator Polymer 1	Gallons													
Flocculator Polymer 2	Gallons	913	1,148	1,927	1,325	720	-	-	-	-	115	-	-	250
Filter Polymer 1	Gallons	1,697	-		47	746	5,662	8,984	3,739	914	3,077	2,358	830	728
Filter Polymer 2	Gallons													151
Belt Presses	Gallons	730	519	467	607	502	450	776	613	1,073	735	693	784	810
<b>ENERGY</b>														
<b>Total Electricity Used</b>	<b>MWH</b>	<b>630</b>	<b>709</b>	<b>683</b>	<b>749</b>	<b>759</b>	<b>713</b>	<b>739</b>	<b>807</b>	<b>849</b>	<b>870</b>	<b>747</b>	<b>719</b>	<b>658</b>
Purchased from PGE	MWH	630	709	683	583	378	330	338	412	469	476	367	433	287
Produced from Co-Gen	MWH	-	-	-	166	245	213	225	203	253	248	251	236	273
Percent Produced	%				22%	32%	30%	30%	25%	30%	29%	34%	33%	41%
Purchased from Solar	MWH	-	-	-	14	159	202	203	213	172	153	140	87	98
Percent Produced					2%	21%	28%	27%	26%	20%	18%	19%	12%	15%
Purchased Natural Gas	Therms	4	-	13	205	50	21	51	858	56	60	19	99	91
Methane Flared Off	KSCF	4,407	3,225	2,722	986	56	15	225	127	156	164	5	82	192
<b>Stand By Calls</b>	<b>#</b>	<b>50</b>	<b>24</b>	<b>41</b>	<b>63</b>	<b>42</b>	<b>55</b>	<b>86</b>	<b>48</b>	<b>44</b>	<b>78</b>	<b>36</b>	<b>47</b>	<b>66</b>
<b>Violations</b>	<b>#</b>	<b>-</b>	<b>-</b>	<b>-</b>	<b>-</b>	<b>-</b>	<b>-</b>	<b>-</b>	<b>-</b>	<b>-</b>	<b>-</b>	<b>-</b>	<b>-</b>	<b>-</b>

# WASTEWATER PLANT MAINTENANCE and LABORATORY DATA - MONTHLY

CATEGORY	Dec-16	Jan-17	Feb-17	Mar-17	Apr-17	May-17	Jun-17	Jul-17	Aug-17	Sep-17	Oct-17	Nov-17	Dec-17
<b><u>Scheduled</u></b>													
Old	48	75	49	43	40	75	41	37	28	17	33	33	61
New	80	86	61	106	91	87	90	72	78	78	86	82	56
Completed	53	112	67	109	56	121	94	81	89	62	86	54	78
<b>New Balance</b>	<b>75</b>	<b>49</b>	<b>43</b>	<b>40</b>	<b>75</b>	<b>41</b>	<b>37</b>	<b>28</b>	<b>17</b>	<b>33</b>	<b>33</b>	<b>61</b>	<b>39</b>
<b><u>Unscheduled</u></b>													
Old	57	57	49	48	48	61	46	47	45	38	43	34	44
New	31	30	27	21	24	24	56	29	40	32	21	37	19
Completed	31	38	28	21	11	39	55	31	47	27	30	27	23
<b>New Balance</b>	<b>57</b>	<b>49</b>	<b>48</b>	<b>48</b>	<b>61</b>	<b>46</b>	<b>47</b>	<b>45</b>	<b>38</b>	<b>43</b>	<b>34</b>	<b>44</b>	<b>40</b>
<b><u>Total Work Orders</u></b>													
Old	105	132	98	91	88	136	87	84	73	55	76	66	105
New	111	116	88	127	115	111	146	101	118	110	107	119	75
Completed	84	151	95	130	67	161	149	112	132	89	117	81	101
<b>New Balance</b>	<b>132</b>	<b>98</b>	<b>91</b>	<b>88</b>	<b>136</b>	<b>87</b>	<b>84</b>	<b>73</b>	<b>55</b>	<b>76</b>	<b>67</b>	<b>105</b>	<b>79</b>
<b><u>LAB ANALYSES</u></b>													
<b>Sample Type</b>													
Regulatory	175	192	214	210	218	177	230	173	193	194	156	178	163
Process Control	1,209	1,189	1,051	1,370	1,167	820	1,107	1,024	1,104	1,091	1,137	1,220	1,139
Special Request	40	3	1	1	-	6	200	-	-	7	8	4	6
Quality Control/Assurance	299	303	272	301	497	523	574	464	549	428	420	1,110	874
<b>TOTAL</b>	<b>1,723</b>	<b>1,687</b>	<b>1,538</b>	<b>1,882</b>	<b>1,882</b>	<b>1,526</b>	<b>2,111</b>	<b>1,661</b>	<b>1,846</b>	<b>1,720</b>	<b>1,721</b>	<b>2,512</b>	<b>2,182</b>

**Summary of NSD Capital Project Status  
through 12-31-17**

Proj #	Description	FY 17-18 Budget	FY 16-17 Carryovers	Adj.	Final FY 17-18 Budget	Encumbrance	Costs Paid to Date	Budget Remaining	% Budget Expended
	<b><u>COLLECTION SYSTEM</u></b>								
13701	Main Line Sewer Rehab	91,800			91,800	-	7,889	83,911	9%
13702	Manhole Raising/Rehab	206,000			206,000	-	142,625	63,375	69%
13703	Lateral Replacement/Rehab	74,500			74,500	580	53,718	20,202	72%
13704	Cleanouts Installation/Rehab	90,000			90,000	4,029	41,843	44,128	46%
13705	I&I Reduction Program	207,000	29,000		236,000	191,774	16,735	27,491	7%
14703	Browns Valley Rd & First St	9,237,000	3,004,750	(1,000,000)	11,241,750	125,813	126,130	10,989,808	1%
17702	Upper Lateral Rehab - Basin L (Pilot #2)	155,300		(110,000)	45,300	-	23,687	21,613	52%
17704	Infltrtn Rehab - SSMH/PL (CI-)	-	73,900		73,900	-	-	73,900	-
17705	Soscol Ave (8th to Oil Co Rd)	950,000	415,450		1,365,450	34,485	1,311,222	19,743	96%
17707	66-inch Trunk CCTV Inspection	-	149,350	90,000	239,350	52,779	67,422	119,149	28%
17708	Basin G - I&I Reduction #1	2,942,000	1,504,100		4,446,100	1,858,333	2,161,387	426,380	49%
17734	Homewood/Westwood I/I Reduction	-	60,300		60,300	-	17,537	42,763	29%
18701	I&I Smoke Testing	100,000			100,000	-	-	100,000	-
18702	Collection System Asset Management Software	350,000			350,000	-	-	350,000	-
18703	Upper Lateral Rehab - Pilot #4	5,000			5,000	-	-	5,000	-
18704	Manhole Rehab - Nipak - Basin H	284,600			284,600	171,640	10,358	102,602	4%
18705	Sewer System Inflow/Infiltration 2018	1,650,000		834,000	2,484,000	8,291	91,331	2,384,378	4%
18706	Sewer System Inflow/Infiltration 2019	20,000			20,000	-	-	20,000	-
	<b><u>COLLECTION SYSTEM - EQUIPMENT</u></b>								
18707	Locatable Mini-Camera #2 Replacement	11,100			11,100	-	8,836	2,265	80%
18708	Manhole - Smart Covers (4)	25,000			25,000	-	-	25,000	-
18709	Vehicle 504 - TV Truck	270,000			270,000	-	187,154	82,846	69%
18735	Permaliner Picote	-		20,000	20,000	-	15,476	4,524	77%
18738	Combination Truck Veh #529B	-		-	-	-	-	-	-
	<b><u>LIFT STATIONS</u></b>								
17711	West Napa PS - Rehab	-	1,746,365		1,746,365	41,077	23,412	1,681,877	1%
	<b><u>TREATMENT</u></b>								
13745	Pond 1 Dredge	400,000			400,000	27,771	-	372,229	-
16708	Algae to Digester/Thermal Stdy	-	46,800		46,800	22,913	698	23,189	1%
	<b><u>TREATMENT - EQUIPMENT</u></b>								

**Summary of NSD Capital Project Status  
through 12-31-17**

Proj #	Description	FY 17-18 Budget	FY 16-17 Carryovers	Adj.	Final FY 17-18 Budget	Encumbrance	Costs Paid to Date	Budget Remaining	% Budget Expended
13735	Dual Fuel Boiler Burner	155,300			155,300	-	-	155,300	-
13741	Secondary PS Pump Rebuild (3)	38,800			38,800	-	31,797	7,003	82%
13743	Risidual Analyzers (Deox) Replacements	5,000	3,500	40,000	48,500	-	43,925	4,575	91%
15711	Rotork Actuator Replacement	-	7,600		7,600	-	-	7,600	-
15713	Aeration Basin Instrmntn/Ctrl	-	10,000		10,000	-	290	9,710	3%
16714	High Voltage System Repairs	-	66,500	(66,500)	-	-	-	-	-
17713	Secondary PS VFD Rplcmnt (3)	55,400	51,150	(106,550)	-	-	-	-	-
17714	WWTP MP - 3W Sys Imprvmnts	440,000	36,100	(476,100)	-	-	-	-	-
17715	Turbidimeters (7) Tertiary Rplcmnts	20,000	15,400		35,400	14,041	19,405	1,954	55%
17718	Ener Audit - LED Pole/Arm Mounted Fixtures	-	44,750	(15,000)	29,750	4,297	267	25,186	1%
17725	Main - Sump #3 Modification	-	10,000		10,000	-	-	10,000	-
18710	3W Pipeline - Soscol PS to Plant - Rehab	33,300			33,300	-	-	33,300	-
18711	3W Strainer	83,200			83,200	-	-	83,200	-
18712	3W VFD	62,100		(62,100)	-	-	-	-	-
18713	Primary Influent Pipe - East Gallery	250,000		(250,000)	-	-	-	-	-
18714	Distillation System	6,000			6,000	-	-	6,000	-
18715	Muffle Furnace - Replacement	15,000		(10,000)	5,000	-	-	5,000	-
18716	Rotork Actuator Replacement	91,800			91,800	-	-	91,800	-
18717	Septage Card Reader Replacement	21,400			21,400	-	-	21,400	-
18718	Secondary Clarifier Mech/Struct Rehabilitation	50,000			50,000	3,060	46,940	-	94%
18719	Filter Flow Control - Rotork Valves	46,600			46,600	-	-	46,600	-
18720	Neuros Blowers Rebuild	62,100			62,100	-	-	62,100	-
18721	CCB #3 Effluent Gate	5,000		(5,000)	-	-	-	-	-
18722	FOG Station Water Heater	5,000			5,000	-	-	5,000	-
18723	Pond 4 PS - Repair Leak	24,000		(24,000)	-	-	-	-	-
18724	Filter 1-4 Air Valve	10,000		(10,000)	-	-	-	-	-
18725	Belt Press Hydraulic Actuator Replace	20,000			20,000	-	-	20,000	-
18734	Boat Motor Vehicle 302	-		10,000	10,000	-	9,383	617	94%
18739	Pond 1 Transformer Repair	-		-	-	-	-	-	-
	<b>TREATMENT - STRUCTURES</b>								
17726	Headworks Equipment Rehab/Replacment	250,000	42,100		292,100	125,264	137,064	29,772	47%
18726	Building HVAC and Lab Ventilation	500,000		(500,000)	-	-	-	-	-
18727	Earthquake - Structural Repair	300,000		350,000	650,000	25,836	492,898	131,266	76%
18728	Roof Rplcmnt - Solids Handling/Digester Tower	232,900			232,900	84,850	82,085	65,965	35%

**Summary of NSD Capital Project Status  
through 12-31-17**

<b>Proj #</b>	<b>Description</b>	<b>FY 17-18 Budget</b>	<b>FY 16-17 Carryovers</b>	<b>Adj.</b>	<b>Final FY 17-18 Budget</b>	<b>Encumbrance</b>	<b>Costs Paid to Date</b>	<b>Budget Remaining</b>	<b>% Budget Expended</b>
18736	Treatment Plant Project 2018	-		1,500,250	1,500,250	305,801	19,738	1,174,710	1%
18737	Flash Mixer Replacement	-		-	-	-	-	-	-
	<b><u>SCADA</u></b>								
18729	SCADA MP Project #1 - Network Monitoring	50,000			50,000	-	33	49,968	0%
	<b><u>RECYCLING - DISTRICT</u></b>								
16716	Line Recycled Water Reservoir	1,800,000	169,550	650,000	2,619,550	1,413,802	166,544	1,039,204	6%
18730	Jameson 24" Flow Meter Rehab	6,200			6,200	-	-	6,200	-
18731	Coombsville Truck Fill Station	100,000			100,000	23,057	617	76,326	1%
	<b><u>RECYCLING - EXPANSION</u></b>								
13727	North Bay Wate Reuse Project	150,000			150,000	-	80,485	69,515	54%
14726	MST RW Pipeline Construction	-	5,000		5,000	-	292	4,708	6%
16722	MST RW Pipeline Extension	2,800,000	(158,465)		2,641,535	806,323	1,352,280	482,932	51%
	<b><u>OTHER</u></b>								
13729	Development Technical Support	239,900			239,900	-	132,157	107,743	55%
18732	Box Culvert - Fugundes Emergency Access	5,000			5,000	-	-	5,000	-
18733	GPS Handheld	15,000			15,000	-	7,958	7,042	53%
<b>GRAND TOTAL ALL PROJECTS</b>		<b>\$25,018,300</b>	<b>\$7,333,200</b>	<b>\$859,000</b>	<b>\$33,210,500</b>	<b>\$5,345,816</b>	<b>\$6,931,617</b>	<b>\$20,933,069</b>	<b>21%</b>