



Napa Sanitation District

General Manager's Report

for

September, 2017

Contents:

- a. Transmittal Memo
- b. Budget Status and Cash Summary
- c. Key Information Graphs – Fund Balances, Treatment Plant and Collection
- d. Fund Balances
- e. Development Processing
- f. Construction Inspection
- g. Pollution Prevention
- h. Recycled Water Deliveries
- i. Biosolids Handling
- j. Collection System Maintenance
- k. Treatment Plant Operations
- l. Treatment Plant Maintenance & Laboratory
- m. Capital Project Expenditure Summary



NAPA SANITATION DISTRICT

General Manager's Report

Dedicated to Preserving the Napa River for Generations to Come

DATE: November 15, 2017

FROM: Timothy B. Healy, General Manager

SUBJECT: General Manager's Report for September, 2017

REGULATORY COMPLIANCE:

Collection System Compliance:	0 Category 1 SSO's, 0 Category 2 SSO's, and 8 Category 3 SSO's
NPDES Permit (WWTP) Compliance:	Full compliance with all regulations
Air Quality Compliance:	Full compliance with all regulations
Recycled Water Compliance:	Full compliance with all regulations
Biosolids Compliance:	Full compliance with all regulations
Significant Comments:	None

FISCAL STATUS:

Period Covered:	July 1, 2017 – September 30, 2017
Percent Fiscal Year:	25.0%
Operating Expenditures to date:	27.0%
Historical Expenditures to date:	33.5%
Significant Comments:	Typically the "Operating Expenditures to date" would include an intrafund transfer from Operating to Capital. However, cash flow in the Capital Fund has been sufficient this year. We will monitor this closely and make the fund transfer when funds become low in the Capital Fund.

PERSONNEL:

Significant events for the month of September, 2017 in the Human Resources Department:

New Hires:	None
Separations:	None
Promotions:	None
Recruitment Activities:	Held second interviews for Operator-in-Training/Operator I and Engineer positions; and held testing and interviews for Collection System Worker-in-Training position.
Injuries:	None.

Summaries of Operational Highlights are on following pages.

COLLECTIONS:

Significant events for the month of September 2017 in Collection System Maintenance include:

- The District had 0 Category 1 Sanitary Sewer Overflows (SSO's), 0 Category 2 SSO's and 8 Category 3 SSO's during the month. (A Category 1 is defined as an SSO that reached a drainage channel and/or surface water or; an SSO that reached a storm drain pipe that was not fully recovered and returned to the sanitary sewer system. A Category 2 is defined as an SSO that is equal to or greater than 1,000 gallons that did not reach a surface water. A Category 3 is defined as an SSO that is less than 1,000 gallons that did not reach a surface water. These are usually minor overflows of less than 10 gallons from cleanouts on District laterals that can be cleaned up by the crews.)
- The repair crew installed 5 cleanouts, repaired 1 cleanout, replaced 1 lateral and installed 1 CIPP liner. Additionally, the service response/programs crew completed 113 work orders in support of the grease and odor control program, responded to 48 customer requests for service (16 were NSD problem) and closed out 237 mark and locate request tickets.
- The preventative maintenance crews ran work orders on 92 laterals, cleaned approximately 73,988 feet of main line and CCTV inspected 37 laterals. The CCTV truck was out of service for upgrade.
- The repair crew also installed 11 CIPP liners in support of the Upper Lateral Program which included installing a cleanout at or near the foundation of the house.

TREATMENT PLANT:

Significant events for the month of September 2017 in the Treatment Plant Department:

Plant Operations:

- For September 2017, the plant's influent flow was 192 MG as compared to last year flow for September 2016 of 178 MG
- There was no flow to the Napa River for September 2017
- The production of recycle quality occurred for 30 days during September 2017 with a total distributed flow of 130 MG.
- There was .0" rain fall for September 2017 as compared to 0" rain fall for September 2016.
- Pond 4 end of the month recorded level reading was 30.14" as compared to September 2016 of 45.7". Total remaining pond capacity for September 2017 was 61% as compared to September 2016 remaining capacity of 66%.

Power Consumption and Production:

- This September power consumption purchased from PG&E was 476 MWH in comparison to September 2016 purchase of 489 MWH.
- Cogeneration unit ran 720 of 720 hours for the month – 100% uptime, averaging 319.56 Kw
- Solar generation in September was 153 MWH, compared to 172 MWH in August.

Maintenance:

Significant events for the month of September, 2017:

Process Maintenance

- Cogeneration unit monthly emission test - in compliance with BAAQMD permit.
- Rebuilt operating and back pressure regulators for Ferric Pumps
- Replaced six E-stop units on Belt Filter Presses
- IPS pump #220/3-phase control relay replaced
- Replaced DPI transducer on Neuros unit #2
- Installed new pump/ River Park #2
- Ferric pump #102 – rebuilt pump head and over pressure valve
- Replaced H2S sensor in primary clarifier #1
- Filter cell #5/replaced turbidity meter

Projects

- Moved ARV's for digester, primary and TWAS sludge lines
- Completed accident repairs @ River Park

Standby Power

- Plant generators operational testing only
- Riverpark, West Napa, Stonecrest operational testing only

Influent Pumps

- Pump #220 non-operational for 3 days

Laboratory:

- Monthly composite **Influent (INF-001)** monitoring was conducted on September 6th, 2017. Monthly Cyanide monitoring was conducted on September 6th. Sample analysis indicated no unusual results and all parameters were within local limits except for the following:

Sodium: 98 mg/L. Local Limit: 90 mg/L

- Monthly **Recycle Effluent (REC-001)** monitoring was conducted on September 6th, 2017. Sample analysis indicated no unusual results and all parameters were within the state's Water Reuse Requirements and the District's Recycled Water limits.

RECYCLING:

Significant events in the Recycling Department for September 2017 include:

- Staff met with Napa County Public Works outlining necessary steps to convert the Sheriff's Department building landscape to recycled water.
- Staff approved the connection of two recycled water customer in the MST area and three customers in the LCWD area.
- Recycled water delivered for the month of September 2017 (129.574 million gallons), as compared to September 2016 (128.920 million gallons) is higher due to golf course demand. Delivered recycled water volume represents the sum of all use site flow meter consumption values.
- Staff continued land application of biosolids at the Jameson Reuse Site.

POLLUTION PREVENTION:

Significant events in the Pollution Prevention and Outreach Division for September 2017 include:

- 9 facility tours were given to the public.
- Three presentations were given at New Tech High about NapaSan and careers in the wastewater industry.
- The Napa Safe Medication Collection Program is temporarily on hold while we make sure we are in compliance with the new California Board of Pharmacy regulations. The total amount of unneeded medications collected since program inception in September 2010 is 20,802.2 pounds.
- The District issued 3 Toilet Rebates for \$300.
- The District issued 19 ESME Washer Rebates at \$12.50 for a total of \$237.50.
- The NapaSan Open House was held on Saturday, September 9th, and roughly 200 people attended.

ENGINEERING / CAPITAL PROJECTS / DEVELOPMENT:

Significant events occurring in the Engineering Division for September 2017 include:

- Consultant continued design of the West Napa Pump Station Rehabilitation Project.

- Consultant continued design of the Headworks Equipment Replacement Project.
- Staff conducted a public bid opening and issued notice of award for the Recycled Water Reservoir Improvements Project.
- Staff continued design of the 2018 Collection System Rehabilitation Project.
- Consultant continued design of the Browns Valley Trunk Project.
- Consultant and Staff continued work on Phase 1A of the Asset Management Program.
- Contractor continued construction of the MST Recycled Water Pipeline Expansion Project.
- Contractor continued construction of the Soscol/Sousa Trunk Rehabilitation Project.
- Contractor continued construction of the 2017 Collection System Rehabilitation Project.
- Contractor continued construction of Manhole Adjustment Project – Phase VI.
- Staff issued notice to proceed to contractor for the Basin H Manhole Rehabilitation Project.
- Staff continued construction of the Upper Lateral Basin L Pilot #2 Project.
- Staff issued notice to proceed to contractor for the Earthquake Repair Project.
- Staff conducted smoke testing on 3rd Street to identify potential sources of inflow.
- Staff reviewed 35 sets of development plans and deemed 17 sets of plans complete. The approved plans consisted of two residential buildings, six tenant improvements, one commercial building, one commercial lateral, one demolition, three residential laterals, and three recycled water laterals.

Budget Status & Cash Summary - July 1, 2017 - September 30, 2017 (25.0% of the year)

<i>Expenditures</i>	FY 17-18 Budget	Expenditures to date	Encumbrances	Committed to date	Remaining Balance	Percent Committed
<u>Operating</u>						
Salaries & Benefits	\$9,581,300	\$1,707,509	\$3,164	\$1,710,673	\$7,870,627	17.9%
Services & Supplies	6,054,300	1,007,088	1,394,983	2,402,071	3,652,229	39.7%
Taxes	28,650	-	-	-	28,650	0.0%
Debt Service	4,777,450	3,738,039	-	3,738,039	1,039,411 (1)	78.2%
Intrafund Transfers	8,900,000	-	-	-	8,900,000	0.0%
Total Operating:	\$29,341,700	\$6,452,636	\$1,398,147	\$7,850,783	\$21,490,917 (2)	26.8%
<u>Capital</u>						
Bldgs/Improvements & Equip	\$33,210,500	\$2,364,848	\$6,674,434	\$9,039,283	\$24,171,217 (3)	27.2%
Intrafund Transfers	3,630,000	389,553	-	389,553	3,240,447	10.7%
Total Capital :	\$36,840,500	\$2,754,401	\$6,674,434	\$9,428,836	\$27,411,665	25.6%
Grand Total Expenditures:	\$66,182,200	\$9,207,037	\$8,072,581	\$17,279,618	\$48,902,582	26.1%

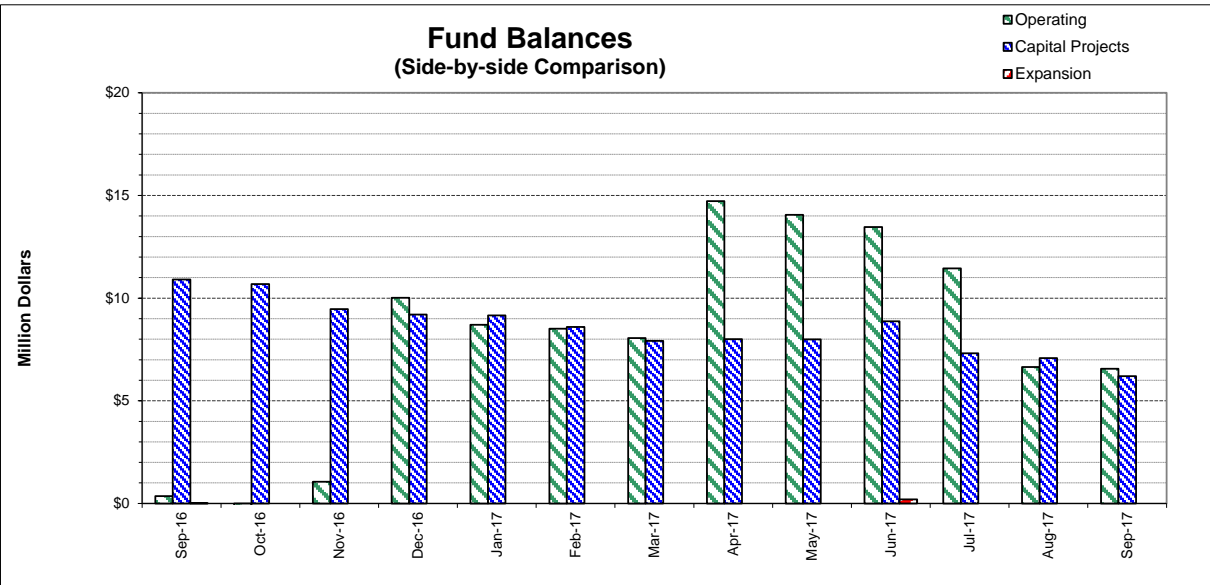
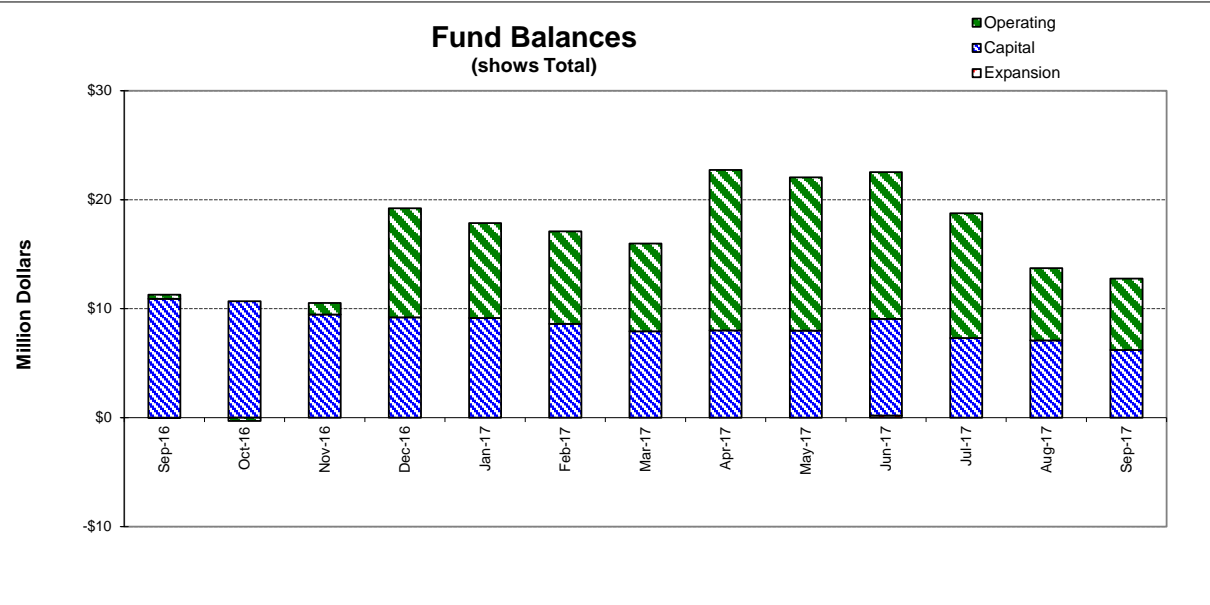
<i>Revenues</i>	FY 17-18 Budget	Collected to date	Encumbrances	Received to Date	Uncollected Revenue	Percent Collected
<u>Operating</u>						
Use of Money/Property	\$896,000	\$332,265		\$332,265	\$563,735	37.1%
Intergovernmental	\$15,000	\$0		-	15,000	N/A
Charges for Services	27,429,100	1,627,361		1,627,361	25,801,739	5.9%
Miscellaneous Revenues	61,000	370,237		370,237	(309,237) (4)	606.9%
Donations/Contributions (Capital Labor)	-	244,052		244,052	(244,052) (5)	N/A
Total Operating:	\$28,401,100	\$2,573,915		\$2,573,915	\$25,827,185	9.1%
<u>Capital</u>						
Use of Money/Property	\$0	\$287		\$287	(\$287)	N/A
Capacity Charges	3,630,000	194,340		194,340	3,435,660	5.4%
Intergovernmental	4,076,000	1,180,941		1,180,941	2,895,059	29.0%
Bond/Loan Proceeds	10,137,000	-		-	10,137,000	0.0%
Sale of Assets	25,000	-		-	25,000	N/A
Miscellaneous Revenues	-	-		-	-	N/A
Intrafund Transfers	12,530,000	389,553		389,553	12,140,447	3.1%
Total Capital:	\$30,398,000	\$1,765,121		\$1,765,121	\$28,632,879	5.8%
Grand Total Revenue:	\$58,799,100	\$4,339,036		\$4,339,036	\$54,460,064	7.4%

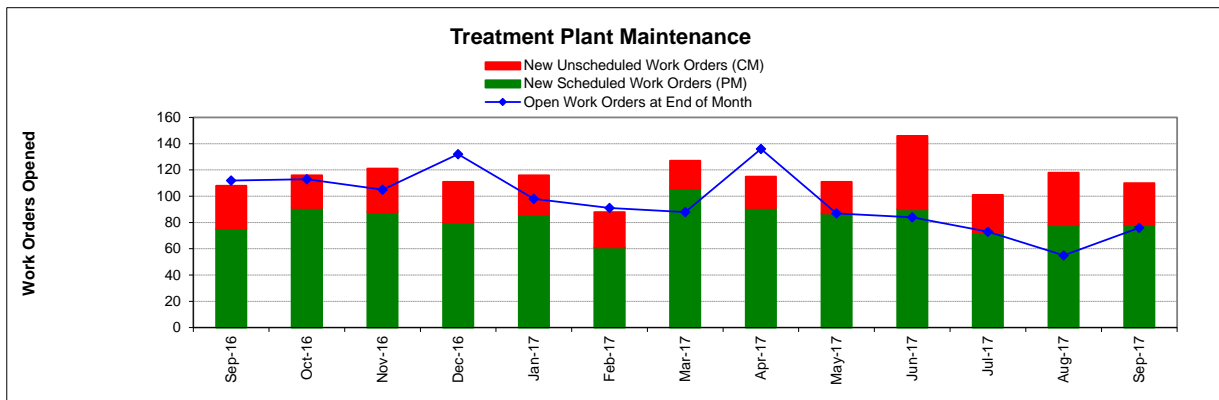
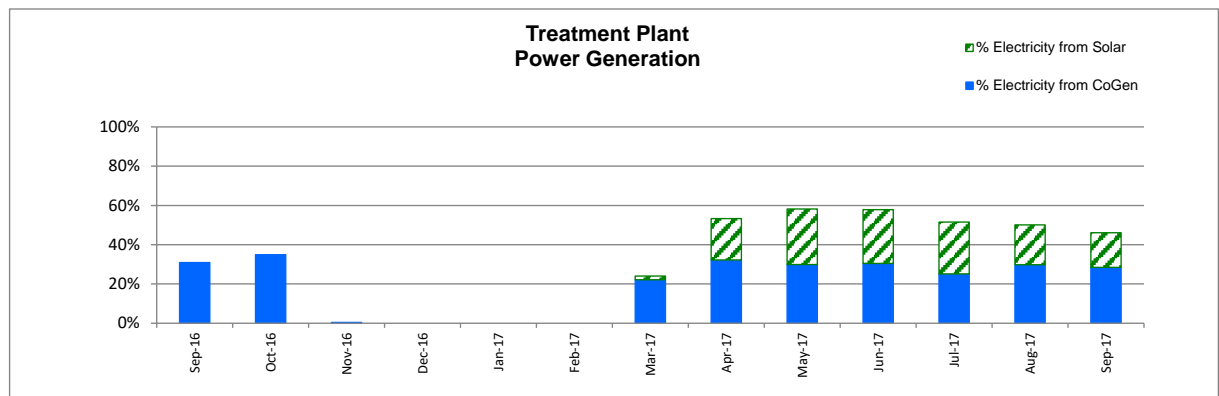
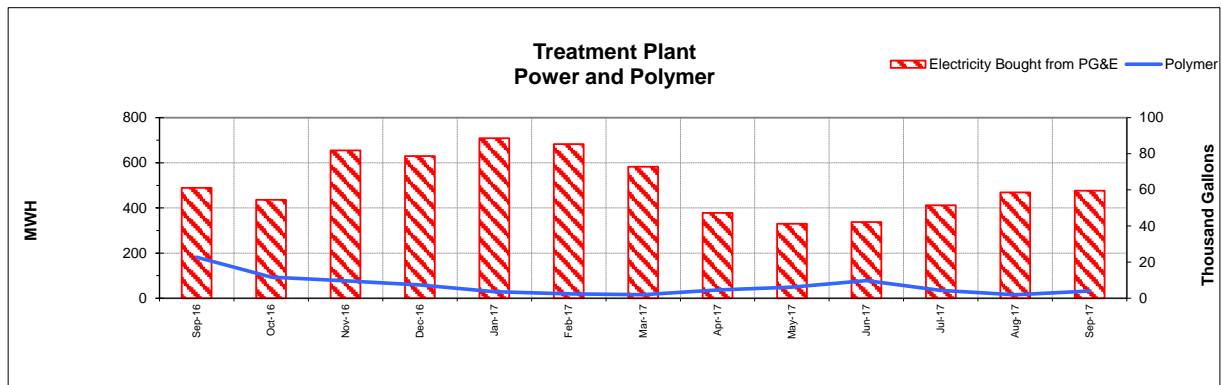
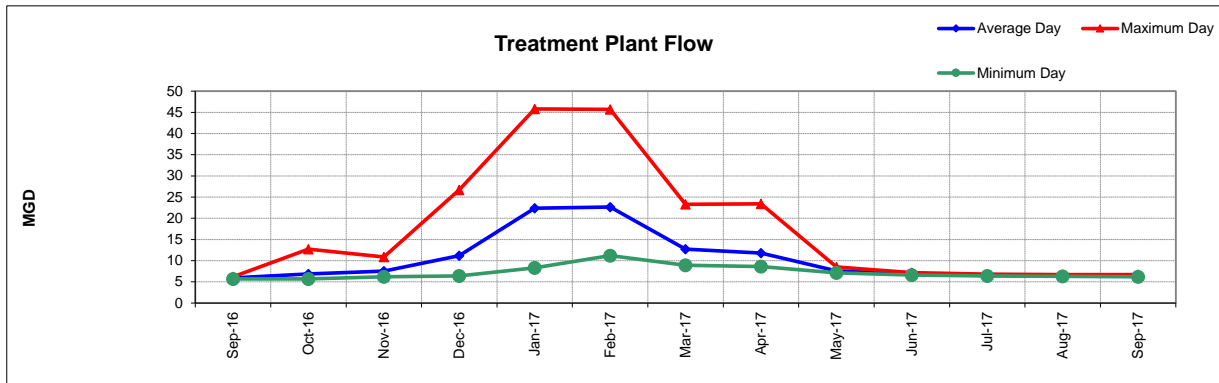
Cash on Hand as of 9/30/17 **\$12,765,353**

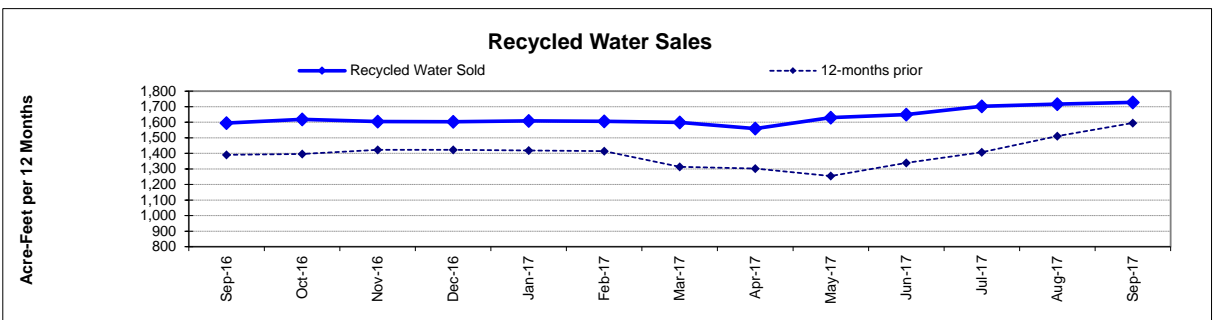
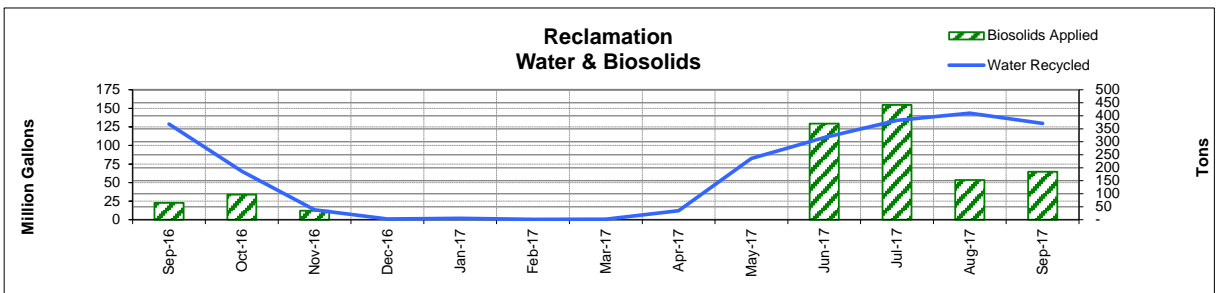
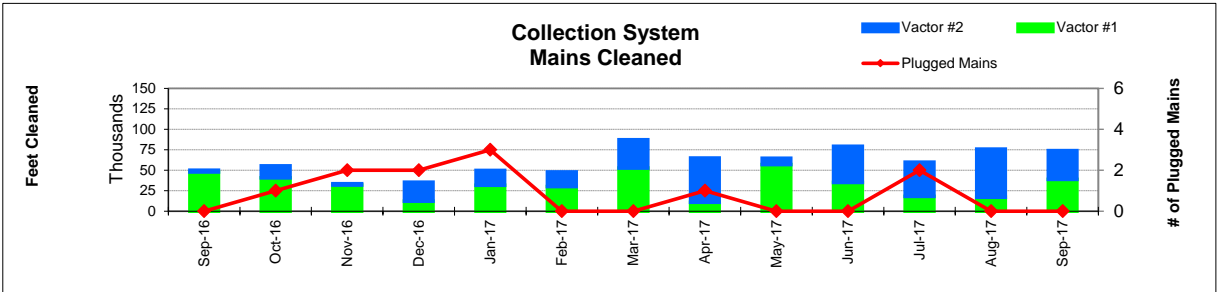
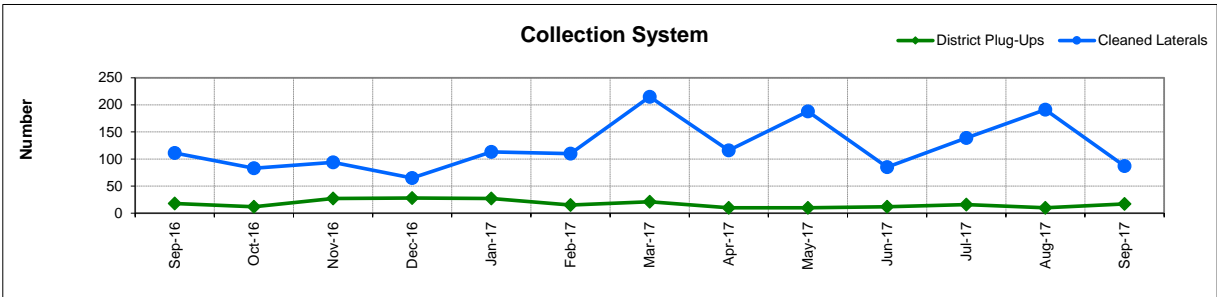
**excluding Debt Service restricted funds
9/30/17 -Effective Rate of Return = 1.09%

1. Series 2009B's and 2012A's principal/interest payments are made in Aug & Feb
2. Includes Debt Service and Intrafund Transfers; otherwise is 26.3%
3. See Capital Project Status report for details
4. Includes reimbursement from NBWRA from FY 16-17.
5. In-house Labor for Capital Projects (Contra acct for Salaries)

This page intentionally left blank.







FUND BALANCES - MONTHLY

CATEGORY	Sep-16	Oct-16	Nov-16	Dec-16	Jan-17	Feb-17	Mar-17	Apr-17	May-17	Jun-17	Jul-17	Aug-17	Sep-17
<i>(Thousand Dollars)</i>													
7800	362	(293)	1,062	10,012	8,701	8,506	8,055	14,722	14,059	13,463	11,450	6,645	6,560
7850	-	-	-	-	-	-	-	-	-	-	-	-	-
Subtotal Operating	362	(293)	1,062	10,012	8,701	8,506	8,055	14,722	14,059	13,463	11,450	6,645	6,560
Capital Improvement Projects	10,912	10,685	9,470	9,204	9,154	8,598	7,921	8,001	7,995	8,867	7,312	7,083	6,205
Debt Proceeds	-	-	-	-	-	-	-	-	-	-	-	-	-
Subtotal Capital	10,912	10,685	9,470	9,204	9,154	8,598	7,921	8,001	7,995	8,867	7,312	7,083	6,205
Total Discretionary Funds	11,274	10,392	10,532	19,216	17,855	17,104	15,976	22,723	22,054	22,330	18,762	13,728	12,765
Expansion Fund (Restricted)	1	-	-	-	-	-	-	-	-	202	-	-	-
Total Restricted Funds	1	-	-	-	-	-	-	-	-	202	-	-	-
TOTAL ALL FUNDS	11,275	10,392	10,532	19,216	17,855	17,104	15,976	22,723	22,054	22,532	18,762	13,728	12,765

DEVELOPMENT WORKLOAD - MONTHLY

CATEGORY	Sep-16	Oct-16	Nov-16	Dec-16	Jan-17	Feb-17	Mar-17	Apr-17	May-17	Jun-17	Jul-17	Aug-17	Sep-17
<u>Phone Requests</u>													
Maps/Drawings	5	8	7	4	9	7	4	5	5	5	3	4	5
Lateral Permits	-	-	-	-	-	2	2	-	-	-	-	-	-
Policy Questions	7	3	8	6	6	10	6	4	10	19	11	6	4
Development Questions	56	61	48	47	45	60	63	62	91	95	51	71	28
Miscellaneous	7	4	6	4	8	6	6	8	8	10	11	3	3
TOTAL	75	76	69	61	68	85	81	79	114	129	76	84	40
<u>Counter Requests</u>													
Maps/Drawings	5	1	-	1	2	1	-	1	3	6	2	-	1
Lateral Permits	19	13	14	7	11	5	11	10	10	18	15	6	16
Policy Questions	2	2	1	-	3	2	1	-	5	2	5	2	2
Development Questions	17	10	8	4	9	13	5	15	29	21	8	14	8
Miscellaneous	4	2	1	2	3	1	-	1	5	6	2	2	2
TOTAL	47	28	24	14	28	22	17	27	52	53	32	24	29
<u>Initial Request (Referrals)</u>	10	7	21	23	17	11	25	17	22	20	10	11	14
<u>Connection Permits Issued</u>													
Residential Permits	1	21	-	-	-	1	3	1	1	12	1	4	-
Commercial Permits	2	6	4	3	-	1	3	1	4	2	2	5	-
Industrial Permits	-	-	-	-	-	-	-	-	-	-	-	-	-
TOTAL PERMITS	3	27	4	3	-	2	6	2	5	14	3	9	-
Residential Units	1	21	-	-	-	1	3	1	2	35	1	4	-
Commercial Units	146	14	4	3	-	3	-	1	4	7	2	6	-
TOTAL UNITS	147	35	4	3	-	4	3	2	6	42	3	10	-
<u>Annexations</u>													
Submitted	1	-	1	-	-	-	-	-	-	-	-	-	-
Acreage	1.10	-	27.11	-	-	-	-	-	-	-	-	-	-
<u>Plans Reviewed</u>													
<u>Subdivisions/Sites</u>													
First Submittal	4	3	5	2	10	2	4	11	6	8	10	5	10
Second Submittal	4	3	-	2	2	3	7	6	8	4	5	7	1
Third Submittal	7	-	1	3	2	1	5	1	2	8	4	2	1
<u>Building/Tenant Improvements</u>													
First Submittal	4	8	5	4	10	5	7	4	9	17	8	19	15
Second Submittal	9	3	4	4	5	2	5	4	4	5	9	6	5
Third Submittal	5	3	8	6	2	1	10	3	7	8	6	7	3
<u>Miscellaneous Plan Reviews</u>	-	-	-	-	1	-	-	-	-	-	-	-	-
TOTAL PLANS REVIEWED	33	20	23	21	32	14	38	29	36	50	42	46	35

INSPECTION WORKLOAD - MONTHLY

CATEGORY	Sep-16	Oct-16	Nov-16	Dec-16	Jan-17	Feb-17	Mar-17	Apr-17	May-17	Jun-17	Jul-17	Aug-17	Sep-17
<u>CONSTRUCTION</u>													
Locating Sewers	-	-	-	-	-	-	-	-	-	-	-	-	-
Permit Processing	-	-	-	-	-	-	-	-	-	1	-	-	-
Preconstruction Meetings	-	5	6	5	9	6	6	4	1	2	3	2	-
Inspections - Mains	-	-	10	1	-	-	6	1	-	4	-	-	2
Inspections - Manholes	-	81	27	89	46	16	15	61	1	9	3	3	40
Inspections - Laterals	9	7	37	11	24	17	50	14	3	8	11	8	6
Inspections - Cleanouts	4	29	71	20	42	38	74	25	-	2	4	3	4
Inspections - Review Video	-	2	2	4	1	-	-	-	2	-	3	-	-
Demo - Septic Tanks	-	-	-	-	-	-	-	-	-	-	-	-	-
Demo - Buildings	-	-	-	-	2	-	1	2	-	-	-	-	-
Update Record Drawings	-	-	-	-	-	-	-	-	-	-	-	-	-
TOTAL	13	124	153	130	124	77	152	107	7	26	24	16	52
<u>MISCELLANEOUS</u>													
Meter Readings	-	9	-	18	100	-	13	24	-	-	-	-	-
Washdown Facility Inspections	-	-	19	-	-	-	-	-	-	-	-	-	-
General Customer Assistance	9	13	-	6	11	11	10	12	11	30	-	28	30
City of Napa Water Discharge	-	-	-	-	-	-	-	-	-	-	34	-	-
TOTAL	9	22	19	24	111	11	23	36	11	30	34	28	30
<u>SPECIAL PROJECTS</u>													
	7	9	32	2	0	6	16	0	0	22	21	23	36

POLLUTION PREVENTION WORKLOAD - MONTHLY

CATEGORY	Sep-16	Oct-16	Nov-16	Dec-16	Jan-17	Feb-17	Mar-17	Apr-17	May-17	Jun-17	Jul-17	Aug-17	Sep-17
<u>Outreach Activities</u>													
Plant Tours Conducted	0	7	8	0	1	4	11	3	4	1	2	1	9
Presentations Made	0	0	3	0	1	2	1	1	5	1	0	0	3
Total Outreach Activities	-	7	11	-	2	6	12	4	9	2	2	1	12
<u>Inspections Conducted</u>													
Food Service Facilities	1	-	-	37	21	53	35	25	-	-	-	-	-
Auto Body & Car Wash	-	-	-	-	-	-	-	-	-	-	-	-	-
Other	-	-	-	-	-	-	-	-	-	-	-	-	-
Total Inspections	1	-	-	37	21	53	35	25	-	-	-	-	-
<u>Compliance Issues</u>													
NOVs Issued	-	-	-	2	-	1	4	-	-	1	-	-	1
NOEs Issued	1	-	1	2	-	1	1	-	1	-	-	1	1
Non-Compliant-FOG	-	-	-	-	-	1	1	-	-	-	-	-	-
Total Compliance Issues	1	-	1	4	-	3	6	-	1	1	-	1	2
<u>Pollution Prevention</u>													
Clothes Washer Rebates	-	-	20	26	28	21	-	-	28	21	1	1	19
Toilet Retrofit Rebates	4	12	8	12	5	4	7	1	2	7	16	6	3
Pharmaceuticals Diverted (in lbs)	386	391	291	63	155	201	71	185	302	368	-	-	-

RECYCLED WATER DELIVERIES - MONTHLY

	Acres	Sep-16	Oct-16	Nov-16	Dec-16	Jan-17	Feb-17	Mar-17	Apr-17	May-17	Jun-17	Jul-17	Aug-17	Sep-17
MONTHLY (MG)														
<u>Water Sold</u>														
Golf Courses	405.0	49.600	25.538	6.308	0.002	0.245	-	0.081	2.513	53.481	66.261	73.994	58.595	53.035
Cemeteries	5.0	1.225	0.328	0.010	0.000	-	-	-	-	0.705	0.754	0.834	1.116	0.634
Parks	18.5	0.741	0.205	-	-	-	-	0.002	0.001	0.624	1.020	0.902	0.866	0.650
Schools	21.0	1.497	0.630	0.014	0.006	0.005	-	0.005	0.013	1.396	2.604	2.250	2.178	1.613
Commerical	167.6	15.070	9.563	3.457	0.490	1.191	0.404	0.501	2.493	15.246	17.491	17.468	17.399	15.227
Vineyards	564.0	17.609	6.065	3.528	0.302	0.194	0.063	0.101	7.119	4.868	10.709	19.143	30.814	18.019
Trucked Water	175.0	0.135	0.124	0.008	0.188	0.009	0.002	0.015	0.018	0.027	0.051	0.474	0.602	0.274
Subtotal Sales	1,356.1	85.877	42.454	13.326	0.988	1.644	0.469	0.705	12.156	76.347	98.891	115.065	111.571	89.451
<u>District Use</u>														
Jameson	330.0	20.935	12.608	-	-	0.089	-	0.087	0.032	-	-	7.298	18.483	20.751
Somky	213.0	22.108	10.000	0.001	-	-	-	0.002	-	6.256	11.738	11.488	13.426	19.372
Fagundes/Airport	50.5	-	-	-	-	-	-	-	-	-	-	-	-	-
Subtotal District	593.5	43.043	22.609	0.001	-	0.089	-	0.089	0.032	6.256	11.738	18.786	31.910	40.122
TOTAL DELIVERED	1,949.6	128.920	65.062	13.327	0.988	1.733	0.469	0.794	12.188	82.603	110.628	133.851	143.481	129.574
ANNUAL (AF)														
<u>Water Sold</u>														
Golf Courses	405.0	946	960	971	968	969	969	969	936	985	1,013	1,047	1,033	1,044
Cemeteries	5.0	15	14	14	14	14	14	14	14	14	14	14	15	13
Parks	18.5	17	16	16	16	16	16	16	16	16	16	14	13	13
Schools	21.0	37	36	34	34	34	34	34	33	32	32	32	33	33
Commerical	167.6	308	304	301	301	304	305	299	287	300	301	309	309	310
Vineyards	564.0	268	285	265	266	266	265	264	270	279	270	281	308	310
Trucked Water	175.0	5	4	4	5	5	5	5	4	4	4	5	5	5
Subtotal Sales	1,356.1	1,596	1,619	1,605	1,603	1,609	1,607	1,600	1,559	1,630	1,650	1,702	1,717	1,728
<u>District Use</u>														
Jameson	330.0	167	163	163	163	163	163	163	163	163	158	164	183	182
Somky	213.0	223	222	222	222	222	222	222	222	241	268	254	230	222
Fagundes/Airport	50.5	-	-	-	-	-	-	-	-	-	-	-	-	-
Subtotal District	593.5	390	385	385	385	385	385	385	385	404	427	419	413	404
TOTAL DELIVERED	1,949.6	1,986	2,004	1,990	1,988	1,994	1,992	1,985	1,945	2,034	2,077	2,121	2,130	2,132

BIOSOLIDS HANDLING - MONTHLY

Site	Sep-16	Oct-16	Nov-16	Dec-16	Jan-17	Feb-17	Mar-17	Apr-17	May-17	Jun-17	Jul-17	Aug-17	Sep-17
<u>Land Applied by NSD</u>													
Somky													
Airport/Fagundes													
Jameson Canyon	65	97	35	-	-	-	-	-	-	370	442	153	184
Subtotal by NSD	65	97	35	-	-	-	-	-	-	370	442	153	184
<u>Land Applied by Contractor</u>													
Somky													
Airport/Fagundes													
Jameson Canyon													
Subtotal by Contractor	-	-	-	-	-	-	-	-	-	-	-	-	-
Total Land Applied	65	97	35	-	-	-	-	-	-	370	442	153	184
Off Site (Contractor)													
Total (tons)	65	97	35	-	-	-	-	-	-	370	442	153	184

COLLECTION SYSTEM MAINTENANCE - MONTHLY

CATEGORY	Sep-16	Oct-16	Nov-16	Dec-16	Jan-17	Feb-17	Mar-17	Apr-17	May-17	Jun-17	Jul-17	Aug-17	Sep-17
<u>Plugups</u>													
Total Calls	48	56	68	84	75	51	61	39	37	44	43	36	42
Business Hours	35	34	38	54	49	30	43	25	21	25	25	27	26
After Hours	13	22	30	30	26	21	18	14	16	19	18	9	16
District's	18	12	27	28	27	15	21	10	10	12	16	10	17
Property Owner's	30	44	41	56	48	36	40	29	27	32	27	26	25
Plugged Main Lines		1	2	2	3								
Run Lateral w/Eel	111	83	94	65	113	110	215	116	188	85	139	191	87
<u>Cleaning (feet of sewer)</u>													
Vactor #1	47,869	40,711	32,046	12,220	31,694	30,016	52,800	10,888	56,860	35,077	18,053	17,179	38,849
Vactor #2	2,184	14,730	1,512	23,277	18,222	18,062	34,405	53,959	7,819	44,357	41,749	58,712	35,140
Hydro Rodder													
Total (feet)	50,053	55,442	33,557	35,497	49,915	48,077	87,205	64,846	64,679	79,433	59,802	75,891	73,989
<u>Cleaning Days</u>													
Vactor #1	15	13	15	7	9	11	14	5	16	12	8	8	14
Vactor #2	1	4	1	8	7	7	11	17	4	16	13	23	11
Hydro Rodder													
<u>Feet/day</u>													
Vactor #1	3,200	3,150	2,150	1,750	3,500	2,750	3,750	2,200	3,550	2,900	2,250	2,150	2,750
Vactor #2	2,200	3,700	1,500	2,900	2,600	2,600	3,150	3,150	1,950	2,750	3,200	2,550	3,200
Hydro Rodder													
<u>Video Inspections</u>													
Mains (feet)	6,453	10,131	6,826	13,141	5,981	6,398	17,209	15,580	25,066	24,881	15,731	15,789	
Laterals (each)	161	174	182	191	203	175	324	249	251	205	265	246	170
<u>Construction (each)</u>													
Cleanouts	16	8	10	6	4	10	16	4	16	7	31	17	7
Laterals		10	5		1		4	3	4	15		9	1
Mains		3											
Manholes		1					1						
Other									50			2	
<u>USA Markings</u>													
Regular (w/in 2 days)	252	215	214	160	151	186	254	305	297	258	215	264	233
Emergency (w/in 2 hours)	10	6	4	18	7	7	13	8	3	6	5	3	7

WASTEWATER PLANT OPERATIONS DATA - MONTHLY

CATEGORY	Units	Sep-16	Oct-16	Nov-16	Dec-16	Jan-17	Feb-17	Mar-17	Apr-17	May-17	Jun-17	Jul-17	Aug-17	Sep-17
FLOWES		30	31	30	31	31	28	31	30	31	30	31	31	30
Influent	MG	178.1	212.3	226.4	346.3	693.3	634.5	394.1	353.8	234.9	206.4	201.5	199.7	191.6
Average Day	MGD	5.9	6.8	7.5	11.2	22.4	22.7	12.7	11.8	7.6	6.9	6.5	6.4	6.4
Maximum Day	Date	5-Sep	28-Oct	20-Nov	16-Dec	10-Jan	7-Feb	23-Mar	9-Apr	1-May	11-Jun	4-Jul	21-Aug	18-Sep
Maximum Day Flow	MG	6.2	12.7	10.9	26.7	45.8	45.7	23.3	23.4	8.5	7.2	6.8	6.7	6.7
Minimum Day	Date	27-Sep	11-Oct	8-Nov	7-Dec	1-Jan	1-Feb	20-Mar	30-Apr	24-May	30-Jun	31-Jul	30-Aug	4-Sep
Minimum Day Flow	MG	5.7	5.7	6.2	6.4	8.3	11.2	8.9	8.6	7.1	6.6	6.4	6.3	6.2
Effluent	MG	132.2	83.5	442.0	369.9	529.2	718.6	730.8	480.3	98.9	117.1	146.3	158.0	142.9
River Discharge	MG			426.1	357.6	529.2	718.6	725.8	463.4	-	-	-	-	-
Recycled Flow	MG	132.2	83.5	16.0	12.2	-	-	5.0	16.8	98.9	123.3	134.0	158.0	142.9
BIOSOLIDS	Tons	397	499	591	658	439	355	488	568	507	639	521	952	703
Wet Tons Generated from Pond	Tons													
Wet Tons Generated from Plant	Tons	397	499	591	658	439	355	488	568	507	639	521	952	703
Wet Tons Hauled Offsite	Tons													
POLYMER USE	Gallons	22,716	11,710	9,676	7,306	3,670	2,394	1,979	4,644	6,112	9,760	4,352	1,987	3,927
Pond Pre-Flocculators	Gallons	9,409	4,594	6,988	3,966	2,003	-	-	2,676	-	-	-	-	-
Flocculator Polymer 1	Gallons													
Flocculator Polymer 2	Gallons	610	110	1,150	913	1,148	1,927	1,325	720	-	-	-	-	115
Filter Polymer 1	Gallons	12,023	6,282	766	1,697	-		47	746	5,662	8,984	3,739	914	3,077
Filter Polymer 2	Gallons													
Belt Presses	Gallons	674	724	772	730	519	467	607	502	450	776	613	1,073	735
ENERGY														
Total Electricity Used	MWH	708	668	657	630	709	683	749	759	713	739	807	849	870
Purchased from PGE	MWH	489	436	655	630	709	683	583	378	330	338	412	469	476
Produced from Co-Gen	MWH	219	233	3	-	-	-	166	245	213	225	203	253	248
Percent Produced	%	31%	35%	0%				22%	32%	30%	30%	25%	30%	29%
Purchased from Solar	MWH	-	-	-	-	-	-	14	159	202	203	213	172	153
Percent Produced								2%	21%	28%	27%	26%	20%	18%
Purchased Natural Gas	Therms	1,653	745	36	4	-	13	205	50	21	51	858	56	60
Methane Flared Off	KSCF	135	67	4,051	4,407	3,225	2,722	986	56	15	225	127	156	164
Stand By Calls	#	61	41	52	50	24	41	63	42	55	86	48	44	78
Violations	#	-	-	-	-	-	-	-	-	-	-	-	-	-

WASTEWATER PLANT MAINTENANCE and LABORATORY DATA - MONTHLY

CATEGORY	Sep-16	Oct-16	Nov-16	Dec-16	Jan-17	Feb-17	Mar-17	Apr-17	May-17	Jun-17	Jul-17	Aug-17	Sep-17
<u>Scheduled</u>													
Old	39	50	57	48	75	49	43	40	75	41	37	28	17
New	75	91	88	80	86	61	106	91	87	90	72	78	78
Completed	64	84	97	53	112	67	109	56	121	94	81	89	62
New Balance	50	57	48	75	49	43	40	75	41	37	28	17	33
<u>Unscheduled</u>													
Old	62	62	56	57	57	49	48	48	61	46	47	45	38
New	33	25	33	31	30	27	21	24	24	56	29	40	32
Completed	33	31	32	31	38	28	21	11	39	55	31	47	27
New Balance	62	56	57	57	49	48	48	61	46	47	45	38	43
<u>Total Work Orders</u>													
Old	101	112	113	105	132	98	91	88	136	87	84	73	55
New	108	116	121	111	116	88	127	115	111	146	101	118	110
Completed	96	115	129	84	151	95	130	67	161	149	112	132	89
New Balance	112	113	105	132	98	91	88	136	87	84	73	55	76
<u>LAB ANALYSES</u>													
<u>Sample Type</u>													
Regulatory	193	204	168	175	192	214	210	218	177	230	173	193	194
Process Control	739	766	1,315	1,209	1,189	1,051	1,370	1,167	820	1,107	1,024	1,104	1,091
Special Request	-	19	39	40	3	1	1	-	6	200	-	-	7
Quality Control/Assurance	5	50	302	299	303	272	301	497	523	574	464	549	428
TOTAL	937	1,039	1,824	1,723	1,687	1,538	1,882	1,882	1,526	2,111	1,661	1,846	1,720

**Summary of NSD Capital Project Status
through 09-30-17**

Proj #	Description	FY 17-18 Budget	FY 16-17 Carryovers	Adj.	Final FY 17-18 Budget	Encumbrance	Costs Paid to Date	Budget Remaining	% Budget Expended
	<u>COLLECTION SYSTEM</u>								
13701	Main Line Sewer Rehab	91,800			91,800	-	-	91,800	-
13702	Manhole Raising/Rehab	206,000			206,000	145,500	9,412	51,088	5%
13703	Lateral Replacement/Rehab	74,500			74,500	9,978	18,040	46,482	24%
13704	Cleanouts Installation/Rehab	90,000			90,000	4,029	24,067	61,903	27%
13705	I&I Reduction Program	207,000	29,000		236,000	8,873	13,364	213,763	6%
14703	Browns Valley Rd & First St	9,237,000	3,004,750		12,241,750	243,411	7,773	11,990,566	0%
17702	Upper Lateral Rehab - Basin L (Pilot #2)	155,300		(20,000)	135,300	-	21,400	113,900	16%
17704	Infltrtn Rehab - SSMH/PL (CI-)	-	73,900		73,900	-	-	73,900	-
17705	Soscol Ave (8th to Oil Co Rd)	950,000	415,450		1,365,450	1,203,307	16,251	145,892	1%
17707	66-inch Trunk CCTV Inspection	-	149,350		149,350	68,126	3,171	78,053	2%
17708	Basin G - I&I Reduction #1	2,942,000	1,504,100		4,446,100	3,375,761	609,122	461,217	14%
17734	Homewood/Westwood I/I Reduction	-	60,300		60,300	-	324	59,976	1%
18701	I&I Smoke Testing	100,000			100,000	-	-	100,000	-
18702	Collection System Asset Management Software	350,000			350,000	-	-	350,000	-
18703	Upper Lateral Rehab - Basin L (Pilot) #3	5,000			5,000	-	-	5,000	-
18704	Manhole Rehab - Nipak - Basin H	284,600			284,600	158,684	2,518	123,398	1%
18705	Sewer System Inflow/Infiltration 2018	1,650,000		834,000	2,484,000	-	25,089	2,458,911	1%
18706	Sewer System Inflow/Infiltration 2019	20,000			20,000	-	-	20,000	-
	<u>COLLECTION SYSTEM - EQUIPMENT</u>								
18707	Locatable Mini-Camera #2 Replacement	11,100			11,100	-	-	11,100	-
18708	Manhole - Smart Covers (4)	25,000			25,000	-	-	25,000	-
18709	Vehicle 504 - TV Truck	270,000			270,000	-	187,154	82,846	69%
18735	Permaliner Picote	-		20,000	20,000	15,625	-	4,375	-
	<u>LIFT STATIONS</u>								
17711	West Napa PS - Rehab	-	1,746,365		1,746,365	62,870	465	1,683,030	0%
	<u>TREATMENT</u>								
13745	Pond 1 Dredge	400,000			400,000	-	-	400,000	-
16708	Algae to Digester/Thermal Stdy	-	46,800		46,800	22,913	138	23,749	0%
	<u>TREATMENT - EQUIPMENT</u>								
13735	Dual Fuel Boiler Burner	155,300			155,300	-	-	155,300	-

**Summary of NSD Capital Project Status
through 09-30-17**

Proj #	Description	FY 17-18 Budget	FY 16-17 Carryovers	Adj.	Final FY 17-18 Budget	Encumbrance	Costs Paid to Date	Budget Remaining	% Budget Expended
13741	Secondary PS Pump Rebuild (3)	38,800			38,800	32,296	-	6,504	-
13743	Risidual Analyzers (Deox) Replacements	5,000	3,500	25,000	33,500	-	1,903	31,597	6%
15711	Rotork Actuator Replacement	-	7,600		7,600	-	-	7,600	-
15713	Aeration Basin Instrmntn/Ctrl	-	10,000		10,000	-	290	9,710	3%
16714	High Voltage System Repairs	-	66,500		66,500	2,960	-	63,540	-
17713	Secondary PS VFD Rplcmnt (3)	55,400	51,150		106,550	-	108	106,442	0%
17714	WWTP MP - 3W Sys Imprvmnts	440,000	36,100		476,100	-	9,566	466,534	2%
17715	Turbidimeters (7) Tertiary Rplcmnts	20,000	15,400		35,400	14,386	19,405	1,609	55%
17718	Energy Audit - LED Pole/Arm Mounted Fixtures	-	44,750		44,750	4,297	267	40,186	1%
17725	Main - Sump #3 Modification	-	10,000		10,000	-	-	10,000	-
18710	3W Pipeline - Soscol PS to Plant - Rehab	33,300			33,300	-	-	33,300	-
18711	3W Strainer	83,200			83,200	-	-	83,200	-
18712	3W VFD	62,100			62,100	-	-	62,100	-
18713	Primary Influent Pipe - East Gallery	250,000			250,000	-	-	250,000	-
18714	Distillation System	6,000			6,000	-	-	6,000	-
18715	Muffle Furnace - Replacement	15,000		(10,000)	5,000	-	-	5,000	-
18716	Rotork Actuator Replacement	91,800			91,800	-	-	91,800	-
18717	Septage Card Reader Replacement	21,400			21,400	-	-	21,400	-
18718	Secondary Clarifier Mech/Struct Rehabilitation	50,000			50,000	50,000	-	-	-
18719	Filter Flow Control - Rotork Valves	46,600			46,600	-	-	46,600	-
18720	Neuros Blowers Rebuild	62,100			62,100	-	-	62,100	-
18721	CCB #3 Effluent Gate	5,000			5,000	-	-	5,000	-
18722	FOG Station Water Heater	5,000			5,000	-	-	5,000	-
18723	Pond 4 PS - Repair Leak	24,000			24,000	-	-	24,000	-
18724	Filter 1-4 Air Valve	10,000			10,000	-	-	10,000	-
18725	Belt Press Hydraulic Actuator Replace	20,000			20,000	-	-	20,000	-
18734	Boat Motor Vehicle 302	-		10,000	10,000	1,906	5,432	2,662	54%
	TREATMENT - STRUCTURES								
17726	Headworks Equipment Rehab/Replacment	250,000	42,100		292,100	261,808	108	30,184	0%
18726	Building HVAC and Lab Ventilation	500,000			500,000	-	-	500,000	-
18727	Earthquake - Structural Repair	300,000			300,000	-	648	299,352	0%
18728	Roof Rplcmnt - Solids Handling/Digester Tower	232,900			232,900	-	-	232,900	-
18736	Treatment Plant Project 2018	-			-	-	216	(216)	-

**Summary of NSD Capital Project Status
through 09-30-17**

Proj #	Description	FY 17-18 Budget	FY 16-17 Carryovers	Adj.	Final FY 17-18 Budget	Encumbrance	Costs Paid to Date	Budget Remaining	% Budget Expended
	<u>SCADA</u>								
18729	SCADA MP Project #1 - Network Monitoring	50,000			50,000	-	-	50,000	-
	<u>RECYCLING - DISTRICT</u>								
16716	Line Recycled Water Reservoir	1,800,000	169,550		1,969,550	40,007	4,398	1,925,145	0%
18730	Jameson 24" Flow Meter Rehab	6,200			6,200	-	-	6,200	-
18731	Coombsville Truck Fill Station	100,000			100,000	23,057	-	76,943	-
	<u>RECYCLING - EXPANSION</u>								
13727	North Bay Wate Reuse Project	150,000			150,000	-	80,485	69,515	54%
14726	MST RW Pipeline Construction	-	5,000		5,000	-	292	4,708	6%
16722	MST RW Pipeline Extension	2,800,000	(158,465)		2,641,535	924,639	1,218,942	497,953	46%
	<u>OTHER</u>								
13729	Development Technical Support	239,900			239,900	-	76,542	163,358	32%
18732	Box Culvert - Fugundes Emergency Access	5,000			5,000	-	-	5,000	-
18733	GPS Handheld	15,000			15,000	-	7,958	7,042	53%
GRAND TOTAL ALL PROJECTS		\$25,018,300	\$7,333,200	\$859,000	\$33,210,500	\$6,674,434	\$2,364,848	\$24,171,217	7%

This page intentionally left blank.