



# **Napa Sanitation District**

## **General Manager's Report**

### **for**

### **August, 2016**

#### Contents:

- a. Transmittal Memo
- b. Budget Status and Cash Summary
- c. Key Information Graphs – Fund Balances, Treatment Plant and Collection
- d. Fund Balances
- e. Development Processing
- f. Construction Inspection
- g. Pollution Prevention
- h. Recycled Water Deliveries
- i. Biosolids Handling
- j. Collection System Maintenance
- k. Treatment Plant Operations
- l. Treatment Plant Maintenance & Laboratory
- m. Capital Project Expenditure Summary



## NAPA SANITATION DISTRICT

## General Manager's Report

*Dedicated to Preserving the Napa River for Generations to Come*

---

**DATE:** October 19, 2016

**FROM:** Timothy B. Healy, General Manager

**SUBJECT:** General Manager's Report for August, 2016

### **REGULATORY COMPLIANCE:**

Collection System Compliance:	0 Category 1 SSO's, 0 Category 2 SSO's and 4 Category 3 SSO's
NPDES Permit (WWTP) Compliance:	Full compliance with all regulations
Air Quality Compliance:	Full compliance with all regulations
Recycled Water Compliance:	Full compliance with all regulations
Biosolids Compliance:	Full compliance with all regulations
Significant Comments:	None

### **FISCAL STATUS:**

Period Covered:	July 1, 2016 – August 31, 2016
Percent Fiscal Year:	16.7%
Operating Expenditures to date:	30.5%
Historical Expenditures to date:	26.1%
Significant Comments:	None.

### **PERSONNEL:**

Significant events for the month of August, 2016 in the Human Resources Department:

New Hires:	Vennie Costanzo and Jordan Dunn, Collection System Workers-in-Training
Separations:	None
Promotions:	Robin Gamble-Holley promoted to Asset Management Analyst I
Recruitment Activities:	None
Injuries:	Two medical only injuries, no lost time injuries.

*Summaries of Operational Highlights are on following pages.*

**COLLECTIONS:**

Significant events for the month of August 2016 in Collection System Maintenance include:

- The District had 0 Category 1 Sanitary Sewer Overflows (SSO's), 0 Category 2 SSO's and 4 Category 3 SSO's during the month. (A Category 1 is defined as an SSO that reached a drainage channel and/or surface water or; an SSO that reached a storm drain pipe that was not fully recovered and returned to the sanitary sewer system. A Category 2 is defined as an SSO that is equal to or greater than 1,000 gallons that did not reach a surface water. A Category 3 is defined as an SSO that is less than 1,000 gallons that did not reach a surface water. These are usually minor overflows of less than 10 gallons from cleanouts on District laterals that can be cleaned up by the crews.)
- The repair crew installed 3 cleanouts. Additionally, the service response programs crew completed 98 work orders in support of the grease and odor control program, responded to 46 customer requests for service (17 were NSD problem) and closed out 224 mark and locate request tickets.
- The preventative maintenance crews ran work orders on 85 laterals, cleaned approximately 61,501 feet of main line and CCTV inspected approximately 15,884 feet of main line and 101 lower laterals.
- Continued to assist with the District chloride study which included the CCTV inspection of several areas close to the Napa River.

**TREATMENT PLANT:**

Significant events for the month of August 2016 in the Treatment Plant Department:

**Plant Operations**

- For August 2016, the plant's influent flow was 186.6 MG as compared to last year flow for August 2015 of 182.1 MG
- There was no flow to the Napa River for August 2016.
- The production of recycle quality occurred for 31 days during August 2016 with a total flow of 155.7 MG.
- This August power consumption purchased from PG&E was 714 MWH in comparison to August 2015 purchase of 536 MWH.
- There was 0.00" rain fall for August 2016 as compared to 0.00" rain fall for August 2015.
- Pond 4 end of the month recorded level reading was 44.79" as compared to August 2015 of 50.83". Total remaining pond capacity for August 2016 was 40.3% as compared to August 2015 remaining capacity of 39.1%.

Maintenance:

Significant events for the month of August, 2016:

Cogeneration Performance

- Cogeneration unit ran 743 of 744 hours for the month – 99.87% uptime, averaging 281.70 Kw

Process Maintenance

- Cogeneration unit monthly emission test - in compliance with BAAQMD permit.
- Belt Press Service:
  - Changed side rubber on press #2
  - Changed hydraulic ram foot pads on press #2 & 3
  - Press #1, 2 and 3 replaced flex hoses and unions on upper and lower wash box connections
  - Replaced seal on press #2 sludge feed pump
  - Installed new coupler on press #3 sludge feed pump
- Replaced IPS HVAC RTD and rescaled local reading to match SCADA

Projects

- Installed Conductivity System at REC-001
- Installed outdoor emergency lighting at Riverpark

Standby Power

- Plant generators operational testing only
- Riverpark, West Napa, Stonecrest operational testing only

Influent Pumps

- Pumps are all operational

Laboratory:

Monthly Recycle Effluent (E-1) monitoring was conducted on August 3<sup>rd</sup>, 2016. Sample results received indicated constituent concentrations within typical agronomic ranges, except these following chloride results indicated below..

- The Recycle Effluent (E-1) samples reported below indicated elevated Chloride results above the Napa Sanitation District agronomic range. These results exceed the Napa Sanitation District Agronomic Range of 260 mg/L on August 14<sup>th</sup> and 15<sup>th</sup> with concentrations of 276.8 mg/L and 260.4 mg/L respectively.

Monthly Influent (INF-001) monitoring was conducted on August 4<sup>th</sup>, 2016. All Influent sample results received indicated no unusual results and were within local limits, except the following constituents indicated below.

- The Influent (INF-001) sample collected on August 4<sup>th</sup> indicated an Ammonia result of 43.1 mg/L which exceeds the Napa Sanitation District Local Limit of 36.0 mg/L.
- The Influent (INF-001) sample collected on August 4<sup>th</sup> indicated a Sodium result of 120 mg/L which exceeds the Napa Sanitation District Local Limit of 90.0 mg/L.

### **RECYCLING:**

Significant events in the Recycling Department for August 2016 include:

- Recycled water delivered for the month of August 2016 (141.178 million gallons), as compared to August 2015 (89.981 million gallons) is higher due to golf course, vineyard and district demand. Delivered recycled water volume represents the sum of all use site flow meter consumption values.
- Staff approved four recycled water service connections in the Los Carneros Water District and one in the Milliken-Sarco-Tulocay area
- Staff continued the land application of biosolids on the Jameson Reuse Site.

### **POLLUTION PREVENTION:**

Significant events in the Pollution Prevention Department for August 2016 include:

- The Napa Safe Medication Collection Program collected 302.6 pounds of unneeded medications. The total amount of unneeded medications collected since program inception in September 2010 is 18,073.6 pounds.
- There were no tours of the Soscov Water Recycling Facility this month.
- There was 1 presentation about "What Not to Flush" given to residents at Napa Creek Manor.
- The District issued 11 Toilet Rebates @ \$100 each for a total of \$1,100.
- The District issued 0 ESME Washer Rebates

### **ENGINEERING / CAPITAL PROJECTS / DEVELOPMENT:**

Significant events occurring in the Engineering Department for August 2016 include:

- Consultant continued design of the Browns Valley Trunk Project.
- Consultant continued design of the Recycled Water Reservoir Lining Project.
- Consultant continued developing a hydraulic model for the District's recycled water distribution system.

- Consultant continued studying the feasibility of utilizing algae for beneficial use.
- Consultant continued design work for the MST Recycled Water Pipeline Expansion Project.
- Staff continued design of the 2017 Collection System Rehabilitation Project
- Bid were opened for the Milliken Creek Sewer Rehabilitation Project – Phase 2 continued.
- Staff continued investigating the collection system for sources of chloride.
- Staff issued the Notice to Proceed for the Manhole Adjustment Project.
- Staff issued the Notice to Proceed for engineering services for the Soscol/Sousa Trunk Rehabilitation Project.
- Staff issued Requests for Proposals for engineering design services for the Headworks Equipment Rehabilitation Project.
- Staff opened bids for the Stationary Gas Detectors – Phase II project.
- Staff continued design of the LED Pole/Arm Fixture Replacement project.
- The contractors continued construction of the following projects:
  - a. Basin “L” Pipeline Rehabilitation Project #5
  - b. ACP Lining Project No. 1B
  - c. Sarco Creek Pipeline Replacement Project
  - d. Aeration Basin Diffusers, Instrumentation and Controls Project.
- The Board accepted completion of the LCWD Recycled Water Pipeline Project.
- Staff reviewed 32 sets of development plans and deemed 11 sets of plans complete. The approved plans consisted of four recycled water laterals, one residential lateral, one public lateral, two tenant improvements, one demo, and two commercial buildings.

**Budget Status & Cash Summary - July 1, 2016 - August 31, 2016 (16.7% of the year)**

<i>Expenditures</i>	<b>FY 16/17 Budget</b>	<b>Expenditures to date</b>	<b>Encumbrances</b>	<b>Committed to date</b>	<b>Remaining Balance</b>	<b>Percent Committed</b>
<b><u>Operating</u></b>						
Salaries & Benefits	\$9,382,370	\$1,205,220	\$3,109	\$1,208,329	\$8,174,041	12.9%
Services & Supplies	5,568,310	572,353	1,034,759	1,607,112	3,961,198	28.9%
Taxes	28,250	-	-	-	28,250	0.0%
Debt Service	4,773,050	3,685,914	-	3,685,914	1,087,136 (1)	77.2%
Intrafund Transfers	8,900,000	2,225,000	-	2,225,000	6,675,000 (2)	25.0%
<b>Total Operating:</b>	<b>\$28,651,980</b>	<b>\$7,688,487</b>	<b>\$1,037,868</b>	<b>\$8,726,356</b>	<b>\$19,925,624 (3)</b>	<b>30.5%</b>
<b><u>Capital</u></b>						
Bldgs/Improvements & Equip	\$17,180,700	\$1,145,769	\$752,520	\$1,898,289	\$15,282,411 (4)	11.0%
Intrafund Transfers	5,512,000	1,417,403	-	1,417,403	4,094,597	25.7%
<b>Total Capital :</b>	<b>\$22,692,700</b>	<b>\$2,563,172</b>	<b>\$752,520</b>	<b>\$3,315,692</b>	<b>\$19,377,008</b>	<b>14.6%</b>
<b>Grand Total Expenditures:</b>	<b>\$51,344,680</b>	<b>\$10,251,659</b>	<b>\$1,790,389</b>	<b>\$12,042,048</b>	<b>\$39,302,632</b>	<b>23.5%</b>

<i>Revenues</i>	<b>FY 16/17 Budget</b>	<b>Collected to date</b>	<b>Encumbrances</b>	<b>Received to Date</b>	<b>Uncollected Revenue</b>	<b>Percent Collected</b>
<b><u>Operating</u></b>						
Use of Money/Property	\$794,000	\$181,264		\$181,264	\$612,736	22.8%
Intergovernmental	\$0	\$0		-	0	N/A
Charges for Services	23,828,500	471,436		471,436	23,357,064	2.0%
Miscellaneous Revenues	69,000	1,755		1,755	67,245	2.5%
Donations/Contributions (Capital Labor)	-	109,293		109,293	(109,293) (5)	N/A
<b>Total Operating:</b>	<b>\$24,691,500</b>	<b>\$763,748</b>		<b>\$763,748</b>	<b>\$23,927,752</b>	<b>3.1%</b>
<b><u>Capital</u></b>						
Use of Money/Property	\$34,000	\$0		\$0	\$34,000	0.0%
Capacity Charges	5,512,000	964,612		964,612	4,547,388	17.5%
Intergovernmental	2,250,000	114,428		114,428	2,135,572	5.1%
Bond Proceeds	4,550,000	-		-	4,550,000	0.0%
Sale of Assets	-	1,196		1,196	(1,196)	N/A
Miscellaneous Revenues	-	-		-	-	N/A
Intrafund Transfers	14,412,000	3,642,403		3,642,403	10,769,597 (2)	25.3%
<b>Total Capital:</b>	<b>\$26,758,000</b>	<b>\$4,722,639</b>		<b>\$4,722,639</b>	<b>\$22,035,361</b>	<b>17.6%</b>
<b>Grand Total Revenue:</b>	<b>\$51,449,500</b>	<b>\$5,486,387</b>		<b>\$5,486,387</b>	<b>\$45,963,113</b>	<b>10.7%</b>

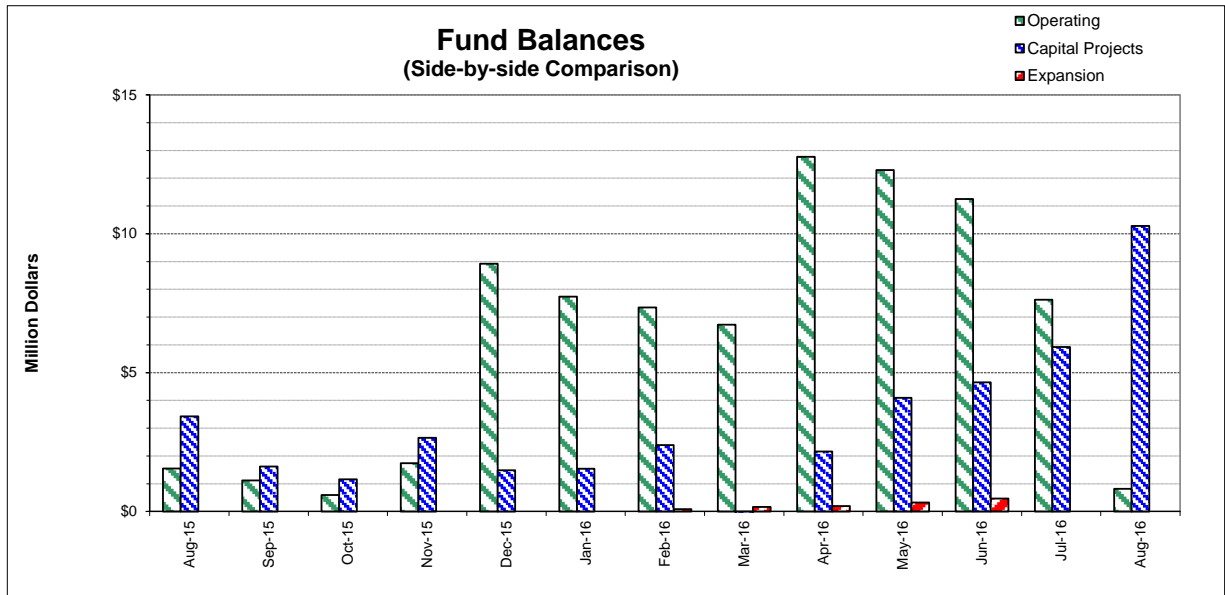
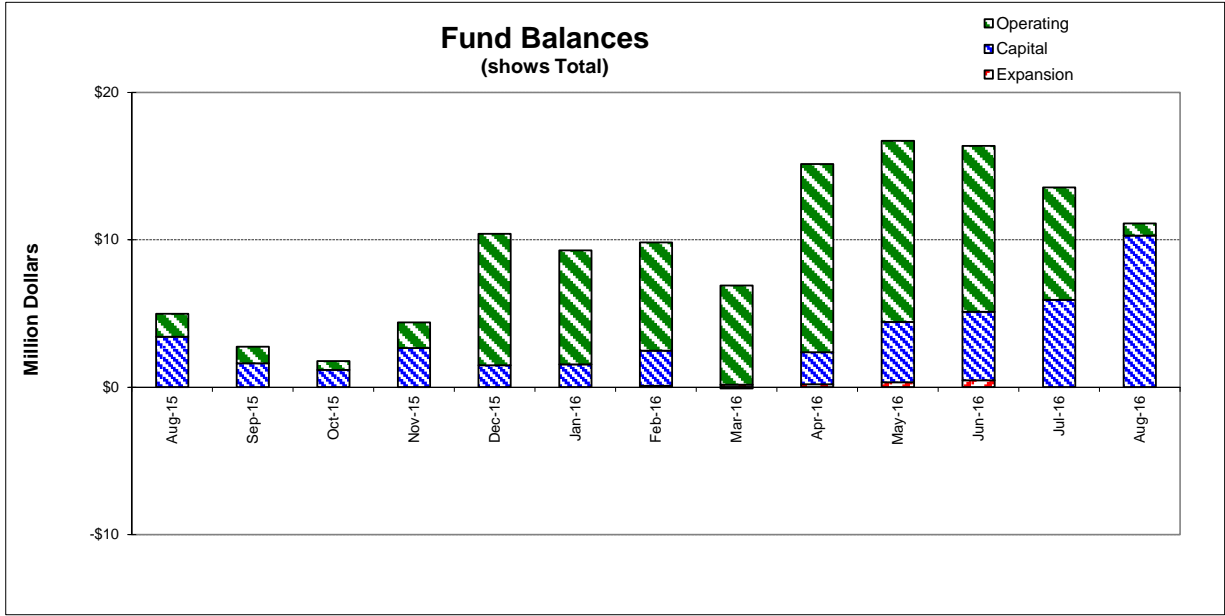
**Cash on Hand as of 8/31/16** **\$11,102,382.70**

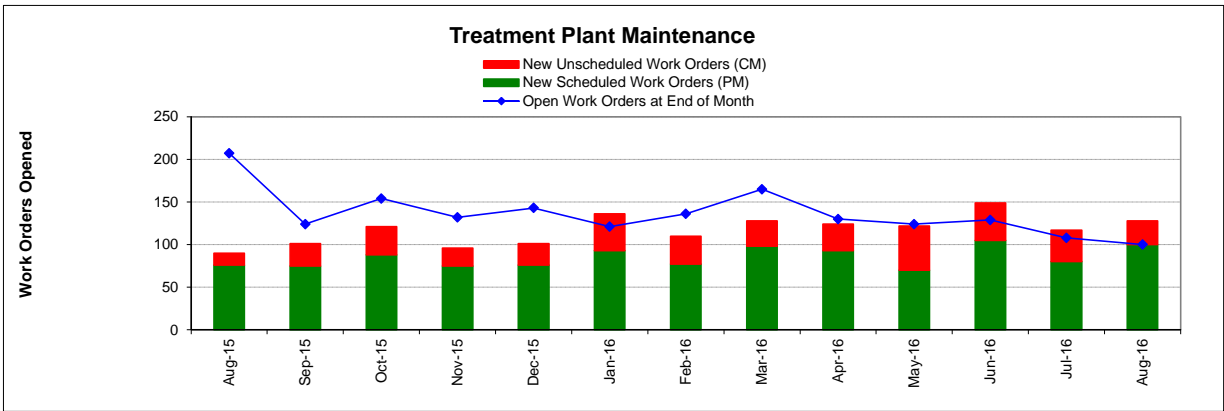
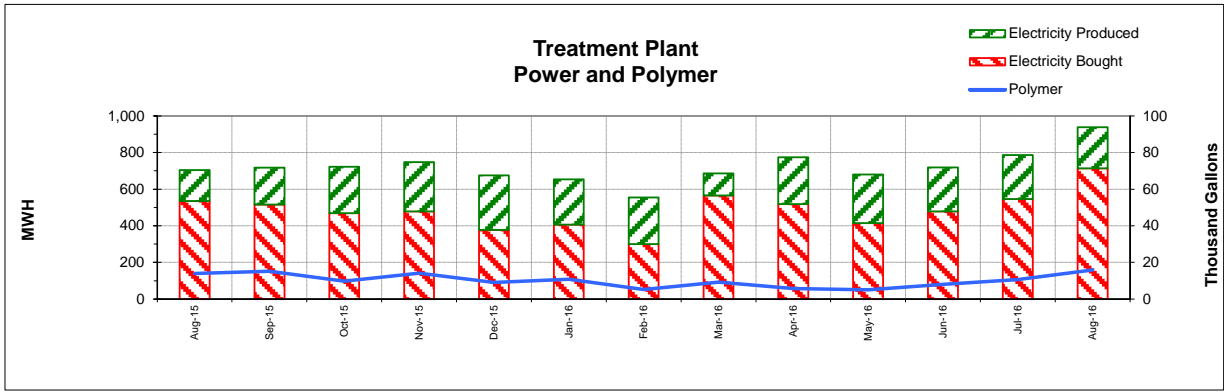
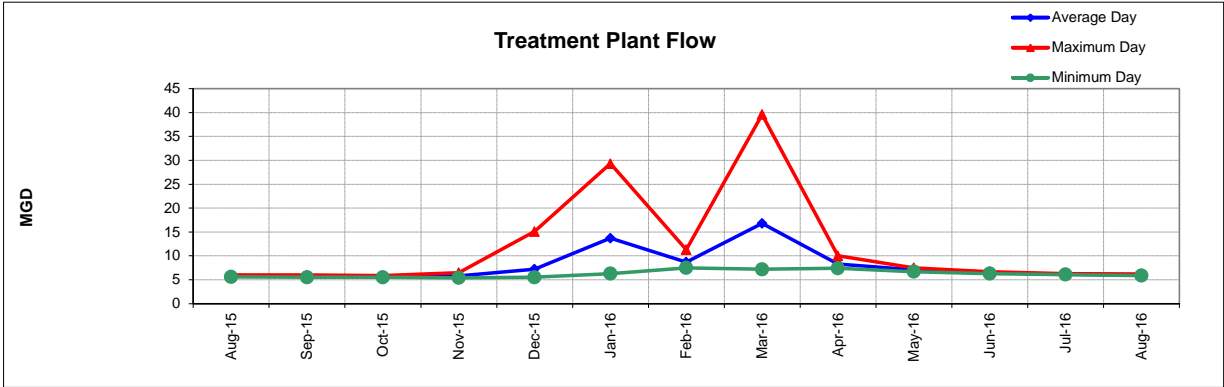
\*\*excluding Debt Service restricted funds  
8/31/16 -Effective Rate of Return = 0.77%

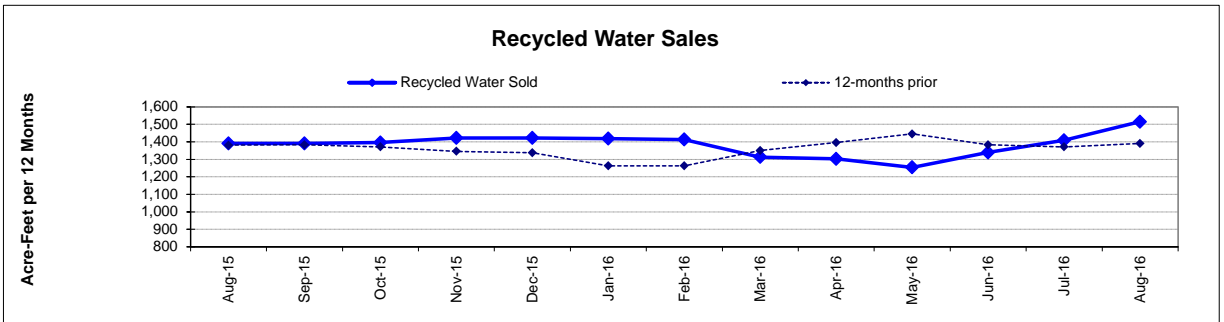
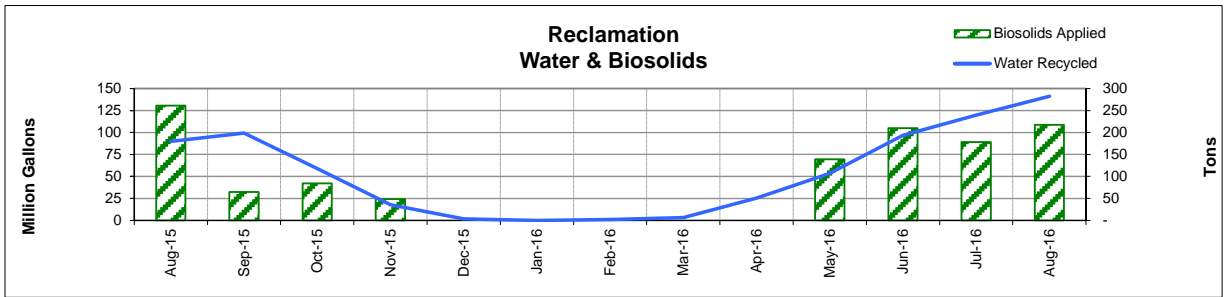
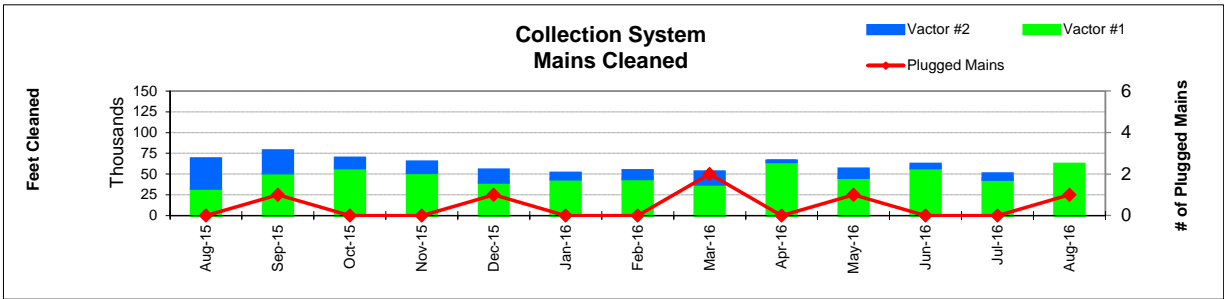
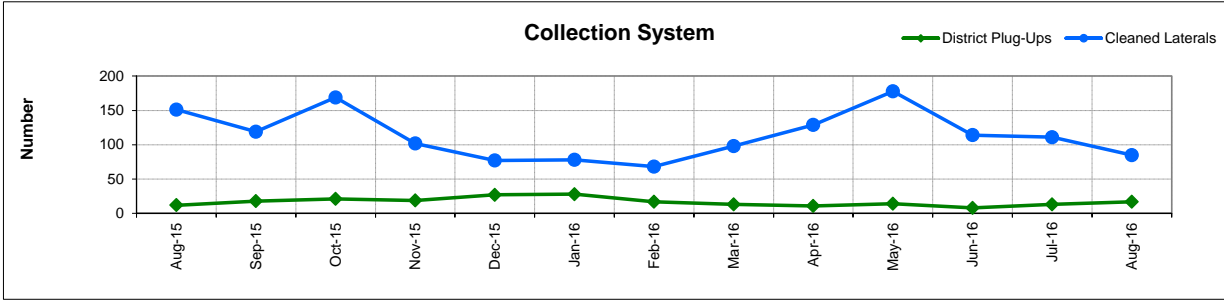
1. Series 2009B's and 2012A's principal/interest payments made in Aug & Feb
2. Processed 25% of intrafund transfer budget from Operating to Capital in July
3. Includes Debt Service and Intrafund Transfers; otherwise is 18.8%
4. See Capital Project Status report for details

**This page intentionally left blank.**









# FUND BALANCES - MONTHLY

CATEGORY	Aug-15	Sep-15	Oct-15	Nov-15	Dec-15	Jan-16	Feb-16	Mar-16	Apr-16	May-16	Jun-16	Jul-16	Aug-16
<i>(Thousand Dollars)</i>													
7800	1,548	1,119	598	1,739	8,920	7,737	7,347	6,726	12,775	12,297	11,251	7,626	819
7850	-	-	-	-	-	-	-	-	-	-	-	-	-
<b>Subtotal Operating</b>	<b>1,548</b>	<b>1,119</b>	<b>598</b>	<b>1,739</b>	<b>8,920</b>	<b>7,737</b>	<b>7,347</b>	<b>6,726</b>	<b>12,775</b>	<b>12,297</b>	<b>11,251</b>	<b>7,626</b>	<b>819</b>
Capital Improvement Projects	3,423	1,624	1,163	2,653	1,484	1,541	2,389	(96)	2,163	4,096	4,649	5,924	10,284
Debt Proceeds	-	-	-	-	-	-	-	-	-	-	-	-	-
<b>Subtotal Capital</b>	<b>3,423</b>	<b>1,624</b>	<b>1,163</b>	<b>2,653</b>	<b>1,484</b>	<b>1,541</b>	<b>2,389</b>	<b>(96)</b>	<b>2,163</b>	<b>4,096</b>	<b>4,649</b>	<b>5,924</b>	<b>10,284</b>
<b>Total Discretionary Funds</b>	<b>4,971</b>	<b>2,743</b>	<b>1,761</b>	<b>4,392</b>	<b>10,404</b>	<b>9,278</b>	<b>9,736</b>	<b>6,630</b>	<b>14,938</b>	<b>16,393</b>	<b>15,900</b>	<b>13,550</b>	<b>11,103</b>
Expansion Fund (Restricted)	-	-	-	-	-	-	85	168	200	326	467	-	-
<b>Total Restricted Funds</b>	<b>-</b>	<b>-</b>	<b>-</b>	<b>-</b>	<b>-</b>	<b>-</b>	<b>85</b>	<b>168</b>	<b>200</b>	<b>326</b>	<b>467</b>	<b>-</b>	<b>-</b>
<b>TOTAL ALL FUNDS</b>	<b>4,971</b>	<b>2,743</b>	<b>1,761</b>	<b>4,392</b>	<b>10,404</b>	<b>9,278</b>	<b>9,821</b>	<b>6,798</b>	<b>15,138</b>	<b>16,719</b>	<b>16,367</b>	<b>13,550</b>	<b>11,103</b>

# DEVELOPMENT WORKLOAD - MONTHLY

CATEGORY	Aug-15	Sep-15	Oct-15	Nov-15	Dec-15	Jan-16	Feb-16	Mar-16	Apr-16	May-16	Jun-16	Jul-16	Aug-16
<b><u>Phone Requests</u></b>													
Maps/Drawings	8	10	6	14	5	9	9	9	8	9	5	5	9
Lateral Permits	-	-	-	-	-	-	-	-	-	-	-	-	-
Policy Questions	8	7	10	4	3	8	12	9	6	9	10	7	11
Development Questions	68	59	93	65	56	89	77	66	105	58	75	99	126
Miscellaneous	11	9	6	5	6	1	6	8	7	14	14	14	15
<b>TOTAL</b>	<b>95</b>	<b>85</b>	<b>115</b>	<b>88</b>	<b>70</b>	<b>107</b>	<b>104</b>	<b>92</b>	<b>126</b>	<b>90</b>	<b>104</b>	<b>125</b>	<b>161</b>
<b><u>Counter Requests</u></b>													
Maps/Drawings	2	2	1	2	1	3	3	2	5	-	-	3	7
Lateral Permits	9	9	15	10	14	15	11	8	10	13	12	9	19
Policy Questions	3	1	-	-	2	-	-	1	2	-	2	-	2
Development Questions	10	7	11	10	9	8	17	12	23	2	10	17	30
Miscellaneous	-	-	3	-	1	1	-	-	2	-	3	5	6
<b>TOTAL</b>	<b>24</b>	<b>19</b>	<b>30</b>	<b>22</b>	<b>27</b>	<b>27</b>	<b>31</b>	<b>23</b>	<b>42</b>	<b>15</b>	<b>27</b>	<b>34</b>	<b>64</b>
<b><u>Initial Request (Referrals)</u></b>	<b>16</b>	<b>14</b>	<b>20</b>	<b>15</b>	<b>9</b>	<b>15</b>	<b>14</b>	<b>16</b>	<b>11</b>	<b>17</b>	<b>14</b>	<b>12</b>	<b>22</b>
<b><u>Connection Permits Issued</u></b>													
Residential Permits	14	7	2	2	8	5	3	4	2	6	9	-	1
Commercial Permits	-	2	4	2	3	-	1	2	1	3	2	1	1
Industrial Permits	-	-	-	-	1	-	-	-	-	-	-	-	-
<b>TOTAL PERMITS</b>	<b>14</b>	<b>9</b>	<b>6</b>	<b>4</b>	<b>12</b>	<b>5</b>	<b>4</b>	<b>6</b>	<b>3</b>	<b>9</b>	<b>11</b>	<b>1</b>	<b>2</b>
Residential Units	14	7	2	2	8	12	4	11	2	6	9	-	1
Commercial Units	-	2	4	183	3	-	1	2	1	3	2	1	1
<b>TOTAL UNITS</b>	<b>14</b>	<b>9</b>	<b>6</b>	<b>185</b>	<b>11</b>	<b>12</b>	<b>5</b>	<b>13</b>	<b>3</b>	<b>9</b>	<b>11</b>	<b>1</b>	<b>2</b>
<b><u>Annexations</u></b>													
Submitted	-	-	-	2	1	-	-	-	-	-	1	-	-
Acreage	-	-	-	1.60	0.12	-	-	-	-	-	1.50	-	-
<b><u>Plans Reviewed</u></b>													
<b><u>Subdivisions/Sites</u></b>													
First Submittal	3	7	4	5	1	3	4	3	8	1	5	1	8
Second Submittal	1	1	3	3	-	-	1	4	3	-	1	1	6
Third Submittal	2	2	1	2	2	1	2	1	1	1	1	3	1
<b><u>Building/Tenant Improvements</u></b>													
First Submittal	15	15	17	19	13	9	2	16	21	12	10	3	12
Second Submittal	1	11	9	4	8	8	1	7	8	7	4	6	4
Third Submittal	-	3	3	9	5	4	1	3	1	6	3	5	1
<b><u>Miscellaneous Plan Reviews</u></b>													
<b>TOTAL PLANS REVIEWED</b>	<b>22</b>	<b>39</b>	<b>37</b>	<b>42</b>	<b>29</b>	<b>25</b>	<b>11</b>	<b>34</b>	<b>42</b>	<b>27</b>	<b>24</b>	<b>19</b>	<b>32</b>

# INSPECTION WORKLOAD - MONTHLY

CATEGORY	Aug-15	Sep-15	Oct-15	Nov-15	Dec-15	Jan-16	Feb-16	Mar-16	Apr-16	May-16	Jun-16	Jul-16	Aug-16
<b><u>CONSTRUCTION</u></b>													
Locating Sewers	-	-	-	-	-	3	-	-	-	-	-	-	-
Permit Processing	-	-	-	-	-	-	-	-	-	-	-	-	-
Preconstruction Meetings	4	-	1	1	2	4	6	6	8	9	7	3	9
Inspections - Mains	-	-	-	-	-	-	6	3	3	2	-	2	1
Inspections - Manholes	10	-	2	13	-	10	91	49	15	8	13	3	-
Inspections - Laterals	20	21	8	9	14	10	15	16	45	29	22	20	20
Inspections - Cleanouts	30	30	12	51	43	17	48	41	42	60	51	28	25
Inspections - Review Video	1	-	1	2	1	4	2	1	4	-	4	-	3
Demo - Septic Tanks	-	-	-	-	-	-	-	-	-	-	-	-	-
Demo - Buildings	-	-	1	-	-	-	1	3	-	-	2	-	1
Update Record Drawings	-	-	-	-	-	-	-	-	-	-	-	-	-
<b>TOTAL</b>	<b>65</b>	<b>51</b>	<b>25</b>	<b>76</b>	<b>60</b>	<b>48</b>	<b>169</b>	<b>119</b>	<b>117</b>	<b>108</b>	<b>99</b>	<b>56</b>	<b>59</b>
<b><u>MISCELLANEOUS</u></b>													
Meter Readings	9	-	-	15	33	-	-	10	-	9	9	10	9
Washdown Facility Inspections	-	-	11	-	-	-	-	-	-	-	-	-	-
General Customer Assistance	5	19	20	4	3	7	36	37	16	10	1	4	4
City of Napa Water Discharge	-	-	-	-	-	-	-	-	-	-	-	-	-
<b>TOTAL</b>	<b>14</b>	<b>19</b>	<b>31</b>	<b>19</b>	<b>36</b>	<b>7</b>	<b>36</b>	<b>47</b>	<b>16</b>	<b>19</b>	<b>10</b>	<b>14</b>	<b>13</b>
<b><u>SPECIAL PROJECTS</u></b>													
	21	21	18	5	6	-	3	-	15	21	22	31	22

# POLLUTION PREVENTION WORKLOAD - MONTHLY

CATEGORY	Aug-15	Sep-15	Oct-15	Nov-15	Dec-15	Jan-16	Feb-16	Mar-16	Apr-16	May-16	Jun-16	Jul-16	Aug-16
<b><u>Outreach Activities</u></b>													
Plant Tours Conducted			1	2	1	3	2	1	4	4	2	0	0
Presentations Made			0	0	0	0	1	1	5	2	0	0	1
<b>Total Outreach Activities</b>	-	-	1	2	1	3	3	2	9	6	2	-	1
<b><u>Inspections Conducted</u></b>													
Food Service Facilities	-	7	1	-	10	24	30	31	19	12	-	-	-
Auto Body & Car Wash	-	-	-	-	-	-	-	-	-	-	-	-	-
Other	-	-	-	-	-	-	-	1	1	-	-	-	-
<b>Total Inspections</b>	-	7	1	-	10	24	30	32	20	12	-	-	-
<b><u>Compliance Issues</u></b>													
NOVs Issued	1	2	1	3	1	2	-	1	2	-	2	1	-
NOEs Issued	-	-	1	1	1	-	-	-	1	2	-	-	-
Non-Compliant-FOG	-	-	-	-	-	-	1	-	-	-	-	-	-
<b>Total Compliance Issues</b>	1	2	2	4	2	2	1	1	3	2	2	1	-
<b><u>Pollution Prevention</u></b>													
Clothes Washer Rebates	-	12	-	8	27	12	10	-	18	14	45	-	-
Toilet Retrofit Rebates	9	35	17	19	21	1	6	22	19	6	10	-	11
Pharmaceuticals Diverted (in lbs)	293	213	305	199	166	556	341	341	322	240	243	362	303

# RECYCLED WATER DELIVERIES - MONTHLY

	Acres	Aug-15	Sep-15	Oct-15	Nov-15	Dec-15	Jan-16	Feb-16	Mar-16	Apr-16	May-16	Jun-16	Jul-16	Aug-16
<b>MONTHLY (MG)</b>														
<b>Water Sold</b>														
Golf Courses	405.0	53.870	41.120	20.985	2.744	0.795	-	0.027	0.070	13.197	37.578	57.273	62.709	63.227
Cemeteries	5.0	0.740	0.854	0.448	0.082	-	-	0.145	0.000	0.015	0.447	0.709	0.931	0.754
Parks	18.5	1.132	0.858	0.415	0.086	-	-	-	-	0.036	0.725	1.078	1.299	1.172
Schools	21.0	2.042	1.827	1.119	0.382	0.088	-	0.040	0.075	0.360	1.528	2.675	2.181	2.120
Commerical	167.6	14.433	13.091	10.945	4.335	0.609	-	0.346	2.430	6.403	11.038	17.053	15.318	17.259
Vineyards	564.0	0.325	0.441	0.396	10.205	0.045	-	0.446	0.365	5.268	2.034	13.413	15.693	21.832
Trucked Water	175.0	0.269	0.333	0.473	0.039	0.020	-	0.010	0.018	0.098	0.064	0.135	0.232	1.042
<b>Subtotal Sales</b>	<b>1,356.1</b>	<b>72.811</b>	<b>58.524</b>	<b>34.780</b>	<b>17.872</b>	<b>1.556</b>	<b>-</b>	<b>1.012</b>	<b>2.958</b>	<b>25.377</b>	<b>53.413</b>	<b>92.336</b>	<b>98.363</b>	<b>107.405</b>
<b>District Use</b>														
Jameson	330.0	3.103	16.280	14.046	-	-	-	-	0.084	-	-	1.481	5.414	12.456
Somky	213.0	14.068	24.405	10.220	-	-	-	-	-	-	-	2.950	16.037	21.318
Fagundes/Airport	50.5	-	-	-	-	-	-	-	-	-	-	-	-	-
<b>Subtotal District</b>	<b>593.5</b>	<b>17.171</b>	<b>40.685</b>	<b>24.266</b>	<b>-</b>	<b>-</b>	<b>-</b>	<b>-</b>	<b>0.084</b>	<b>-</b>	<b>-</b>	<b>4.431</b>	<b>21.451</b>	<b>33.774</b>
<b>TOTAL DELIVERED</b>	<b>1,949.6</b>	<b>89.981</b>	<b>99.209</b>	<b>59.046</b>	<b>17.872</b>	<b>1.556</b>	<b>-</b>	<b>1.012</b>	<b>3.042</b>	<b>25.377</b>	<b>53.413</b>	<b>96.766</b>	<b>119.814</b>	<b>141.178</b>
<b>ANNUAL (AF)</b>														
<b>Water Sold</b>														
Golf Courses	405.0	1,002	998	1,001	997	1,000	999	999	915	899	840	869	891	920
Cemeteries	5.0	15	16	15	15	15	15	15	15	13	13	13	13	13
Parks	18.5	14	16	17	17	17	17	17	17	16	16	17	17	17
Schools	21.0	39	39	40	40	40	40	40	37	35	35	37	38	38
Commerical	167.6	286	287	293	295	294	292	286	275	270	276	294	295	303
Vineyards	564.0	24	25	21	51	49	49	50	49	64	68	103	149	215
Trucked Water	175.0	11	9	9	8	7	6	6	6	6	6	5	5	8
<b>Subtotal Sales</b>	<b>1,356.1</b>	<b>1,390</b>	<b>1,391</b>	<b>1,396</b>	<b>1,423</b>	<b>1,422</b>	<b>1,419</b>	<b>1,414</b>	<b>1,313</b>	<b>1,303</b>	<b>1,254</b>	<b>1,339</b>	<b>1,409</b>	<b>1,515</b>
<b>District Use</b>														
Jameson	330.0	101	122	103	103	103	103	103	103	103	103	107	124	153
Somky	213.0	270	305	291	291	291	291	291	291	291	221	195	208	230
Fagundes/Airport	50.5	-	-	-	-	-	-	-	-	-	-	-	-	-
<b>Subtotal District</b>	<b>593.5</b>	<b>371</b>	<b>427</b>	<b>394</b>	<b>394</b>	<b>394</b>	<b>394</b>	<b>394</b>	<b>394</b>	<b>394</b>	<b>324</b>	<b>302</b>	<b>332</b>	<b>383</b>
<b>TOTAL DELIVERED</b>	<b>1,949.6</b>	<b>1,761</b>	<b>1,818</b>	<b>1,790</b>	<b>1,816</b>	<b>1,816</b>	<b>1,812</b>	<b>1,807</b>	<b>1,707</b>	<b>1,697</b>	<b>1,578</b>	<b>1,641</b>	<b>1,740</b>	<b>1,897</b>



# BIOSOLIDS HANDLING - MONTHLY

Site	Aug-15	Sep-15	Oct-15	Nov-15	Dec-15	Jan-16	Feb-16	Mar-16	Apr-16	May-16	Jun-16	Jul-16	Aug-16
<u>Land Applied by NSD</u>													
Somky													
Airport/Fagundes													
Jameson Canyon	261	64	84	49	-	-	-	-	-	139	210	178	217
Subtotal by NSD	261	64	84	49	-	-	-	-	-	139	210	178	217
<u>Land Applied by Contractor</u>													
Somky													
Airport/Fagundes													
Jameson Canyon													
Subtotal by Contractor	-	-	-	-	-	-	-	-	-	-	-	-	-
<b>Total Land Applied</b>	<b>261</b>	<b>64</b>	<b>84</b>	<b>49</b>	<b>-</b>	<b>-</b>	<b>-</b>	<b>-</b>	<b>-</b>	<b>139</b>	<b>210</b>	<b>178</b>	<b>217</b>
<b>Off Site (Contractor)</b>													
<b>Total (tons)</b>	<b>261</b>	<b>64</b>	<b>84</b>	<b>49</b>	<b>-</b>	<b>-</b>	<b>-</b>	<b>-</b>	<b>-</b>	<b>139</b>	<b>210</b>	<b>178</b>	<b>217</b>

# COLLECTION SYSTEM MAINTENANCE - MONTHLY

CATEGORY	Aug-15	Sep-15	Oct-15	Nov-15	Dec-15	Jan-16	Feb-16	Mar-16	Apr-16	May-16	Jun-16	Jul-16	Aug-16
<b><u>Plugups</u></b>													
<b>Total Calls</b>	47	63	57	53	69	78	58	43	41	45	33	48	52
Business Hours	29	37	35	29	40	40	42	22	31	30	22	27	35
After Hours	18	26	22	24	29	38	16	21	10	15	11	21	17
District's	12	18	21	19	27	28	17	13	11	14	8	13	17
Property Owner's	35	45	36	34	42	50	39	30	30	31	25	35	35
Plugged Main Lines		1			1			2		1			1
Run Lateral w/Eel	151	119	169	102	77	78	68	98	129	178	114	111	85
<b><u>Cleaning (feet of sewer)</u></b>													
Vactor #1	32,946	51,755	57,917	51,959	40,292	44,407	44,811	38,201	65,231	46,352	57,690	43,988	61,502
Vactor #2	35,318	26,032	11,147	12,224	14,325	6,329	9,199	14,073	325	9,687	4,002	6,288	
Hydro													
Rodder							650						
<b>Total (feet)</b>	<b>68,264</b>	<b>77,787</b>	<b>69,064</b>	<b>64,183</b>	<b>54,617</b>	<b>50,736</b>	<b>54,660</b>	<b>52,274</b>	<b>65,556</b>	<b>56,039</b>	<b>61,692</b>	<b>50,277</b>	<b>61,502</b>
<b><u>Cleaning Days</u></b>	<b>22</b>	<b>24</b>	<b>25</b>	<b>22</b>	<b>23</b>	<b>18</b>	<b>21</b>	<b>17</b>	<b>19</b>	<b>19</b>	<b>19</b>	<b>18</b>	<b>19</b>
Vactor #1	10	14	19	16	18	16	13	14	18	17	17	15	19
Vactor #2	12	10	6	6	5	2	7	3	1	2	2	3	
Hydro													
Rodder							1						
<b><u>Feet/day</u></b>	<b>3,100</b>	<b>3,250</b>	<b>2,750</b>	<b>2,900</b>	<b>2,350</b>	<b>2,800</b>	<b>2,600</b>	<b>3,050</b>	<b>3,450</b>	<b>2,950</b>	<b>3,250</b>	<b>2,800</b>	<b>3,250</b>
Vactor #1	3,300	3,700	3,050	3,250	2,250	2,800	3,450	2,750	3,600	2,750	3,400	2,950	3,250
Vactor #2	2,950	2,600	1,850	2,050	2,850	3,150	1,300	4,700	350	4,850	2,000	2,100	
Hydro													
Rodder							650	222					
<b><u>Video Inspections</u></b>													
Mains (feet)	11,613	6,577	12,031	8,137	7,248	6,583	9,718	12,343	8,670	17,352	15,115	3,878	15,885
Laterals (each)	185	194	230	159	173	175	131	154	181	225	152	183	140
<b><u>Construction (each)</u></b>													
Cleanouts	12	10	7	10	23	22	20	13	17	7	10	7	3
Laterals	4	8		2	2	5	8		4	3	5	4	
Mains			1			1			2				
Manholes		1	1										
Other										39			
<b><u>USA Markings</u></b>													
Regular (w/in 2 days)	256	267	251	218	178	222	281	247	270	319	225	244	326
Emergency (w/in 2 hours)	11	13	13	8	16	21	8	13	5	-	6	14	8

## WASTEWATER PLANT OPERATIONS DATA - MONTHLY

[illegible]

# WASTEWATER PLANT MAINTENANCE and LABORATORY DATA - MONTHLY

CATEGORY	Aug-15	Sep-15	Oct-15	Nov-15	Dec-15	Jan-16	Feb-16	Mar-16	Apr-16	May-16	Jun-16	Jul-16	Aug-16
<b><u>Scheduled</u></b>													
Old	90	127	50	74	66	78	39	55	77	66	53	55	37
New	76	75	88	75	76	93	77	98	93	70	105	80	100
Completed	39	152	64	83	64	132	61	76	104	83	103	98	98
<b>New Balance</b>	<b>127</b>	<b>50</b>	<b>74</b>	<b>66</b>	<b>78</b>	<b>39</b>	<b>55</b>	<b>77</b>	<b>66</b>	<b>53</b>	<b>55</b>	<b>37</b>	<b>39</b>
<b><u>Unscheduled</u></b>													
Old	83	80	74	80	66	65	82	81	88	64	71	74	71
New	14	26	33	21	25	43	33	30	31	52	44	37	28
Completed	17	32	27	35	26	26	34	23	55	45	41	40	38
<b>New Balance</b>	<b>80</b>	<b>74</b>	<b>80</b>	<b>66</b>	<b>65</b>	<b>82</b>	<b>81</b>	<b>88</b>	<b>64</b>	<b>71</b>	<b>74</b>	<b>71</b>	<b>61</b>
<b><u>Total Work Orders</u></b>													
Old	173	207	124	154	132	143	121	136	165	130	124	129	108
New	90	101	121	96	101	136	110	128	124	122	149	116	128
Completed	56	193	93	118	90	158	95	99	160	128	144	138	136
<b>New Balance</b>	<b>207</b>	<b>124</b>	<b>154</b>	<b>132</b>	<b>143</b>	<b>121</b>	<b>136</b>	<b>165</b>	<b>130</b>	<b>124</b>	<b>129</b>	<b>108</b>	<b>100</b>
<b><u>LAB ANALYSES</u></b>													
<b><u>Sample Type</u></b>													
Regulatory	382	342	346	408	408	315	281	325	392	130	158	193	179
Process Control	881	843	791	1,310	1,258	1,288	1,157	1,276	1,235	778	729	744	907
Special Request	333	554	174	299	235	60	17	1	5	320	11	207	93
Quality Control/Assurance	12	5	7	302	302	372	500	306	349	209	5	32	5
<b>TOTAL</b>	<b>1,608</b>	<b>1,744</b>	<b>1,318</b>	<b>2,319</b>	<b>2,203</b>	<b>2,035</b>	<b>1,955</b>	<b>1,908</b>	<b>1,981</b>	<b>1,437</b>	<b>903</b>	<b>1,176</b>	<b>1,184</b>

**Summary of NSD Capital Project Status  
through 8-31-2016**

Proj #	Description	FY 16-17 Budget	FY 15-16 Carryovers	Adj.	Final FY 16-17 Budget	Encumbrance	Costs Paid to Date	Budget Remaining	% Budget Expended
<b><u>COLLECTION SYSTEM</u></b>									
13701	Main Line Sewer Rehab	88,700			88,700	-	-	88,700	-
13702	Manhole Raising/Rehab	198,900			198,900	174,085	1,275	23,540	1%
13703	Lateral Replacement/Rehab	72,000			72,000	-	2,676	69,324	4%
13704	Cleanouts Installation/Rehab	87,000			87,000	-	4,315	82,685	5%
13705	I&I Reduction Program	200,000			200,000	-	1,050	198,950	1%
14703	Browns Valley Rd & First St	2,800,000			2,800,000	-	47,276	2,752,724	2%
15703	Sarco Crk PL Rplcmnt/CalTRANS	1,050,000			1,050,000	-	37,294	1,012,706	4%
15721	ACP CIPP Lining Project #1	-			-	-	5,999	(5,999)	-
16701	Basin L - I&I Reduction #5	1,400,000			1,400,000	-	612,584	787,416	44%
16718	NN Siphon Vault Cover Replacement	-			-	-	-	-	-
16723	Milliken Creek Sewer Repair	-			-	-	-	-	-
17701	ACP CIPP Lining Project #2	350,000			350,000	-	-	350,000	-
17702	Upper Lateral Rehab - Basin L (Pilot #2)	5,000			5,000	-	-	5,000	-
17703	Manhole Rehab - Nipak	90,000			90,000	-	50	89,950	0%
17704	Infltrtn Rehab - SSMH/PL (CI-)	400,000			400,000	8,300	-	391,700	-
17705	Soscol Ave (8th to Oil Co Rd)	500,000			500,000	-	-	500,000	-
17706	Rehab - Ranch De Los Robles	400,000			400,000	-	-	400,000	-
17707	66-inch Trunk CCTV Inspection	150,000			150,000	-	-	150,000	-
17708	Basin G - I&I Reduction #1	1,200,000			1,200,000	-	-	1,200,000	-
17734	Homewood/Westwood I/I Reduction								
<b><u>COLLECTION SYSTEM - EQUIPMENT</u></b>									
17709	Eel Replacment 1	5,400		100	5,500	5,454	-	46	-
17710	Vehicle 510 - Water Truck	207,900		(18,100)	189,800	186,709	-	3,091	-
<b><u>LIFT STATIONS</u></b>									
17711	West Napa PS - Rehab	1,750,000			1,750,000	-	-	1,750,000	-
<b><u>TREATMENT</u></b>									
16708	Algae to Digester with Thermal Study	-			-	-	-	-	-
17712	Headworks/Primary - Odor Ctrl	20,000			20,000	-	-	20,000	-
<b><u>TREATMENT - EQUIPMENT</u></b>									
13741	Secondary PS Pump Rebuild (3)	37,500			37,500	-	-	37,500	-
13743	Risidual Analyzers (Deox) Replacements	-		10,000	10,000	-	-	10,000	-
14720	Belt Press Polymer Skid Replacement	-			-	-	-	-	-
15711	Rotork Actuator Replacement	-			-	-	-	-	-
15712	Rehab Pond 1 Storage Structure	25,000			25,000	-	-	25,000	-
15713	Aeration Basin Instrmntn/Ctrl	1,200,000			1,200,000	-	80,320	1,119,680	7%
16713	Buried Metallic Piping (eval/rehab)	40,000		(8,200)	31,800	-	-	31,800	-
16715	Cogen Bottom End Overhaul	75,000			75,000	-	-	75,000	-
17713	Secondary PS VFD Rplcmnt (3)	53,600			53,600	-	-	53,600	-
17714	WWTP MP - 3W Sys Imprmnts	60,000			60,000	-	-	60,000	-

**Summary of NSD Capital Project Status  
through 8-31-2016**

Proj #	Description	FY 16-17 Budget	FY 15-16 Carryovers	Adj.	Final FY 16-17 Budget	Encumbrance	Costs Paid to Date	Budget Remaining	% Budget Expended
17715	Turbidimeters (7) Tertiary Rplcmnts	11,800		11,200	23,000	21,516	-	1,484	-
17716	FOG - Strain Press	200,000			200,000	165,078	-	34,922	-
17717	Energy Audit - Odor Control VFD	51,700			51,700	-	-	51,700	-
17718	Energy Audit - LED Pole/Arm Mounted Fixtures	78,100			78,100	-	-	78,100	-
17719	Lab - Smpler 4700 - Pretreatment	7,500			7,500	-	-	7,500	-
17720	Lab - Smpler 4700 - Pretreatment	7,500			7,500	-	-	7,500	-
17721	Lab - Chlorophyll A Analyzer - Pond Water	5,400			5,400	-	-	5,400	-
17722	Main - Stationary Gas Detector Replacment Ph 2	140,000			140,000	-	-	140,000	-
17723	Main - Rotork Actuator Replacment	88,700			88,700	-	6,200	82,500	7%
17724	Main - Primary Clarifier Exhaust Fan Replacment	5,000			5,000	-	-	5,000	-
17725	Main - Sump #3 Modification	10,000			10,000	-	-	10,000	-
<b><u>TREATMENT - STRUCTURES</u></b>									
13724	IPS Expansion	-			-	-	-	-	-
17726	Headworks Equipment Rehab/Replacment	10,000			10,000	-	-	10,000	-
17727	Roof Replacement - Digester 2nd Floor	125,000			125,000	-	-	125,000	-
17728	Roof Replacement - AB/Blower Building	40,000			40,000	-	-	40,000	-
17729	DAF Access Opening	20,000			20,000	-	-	20,000	-
<b><u>SCADA</u></b>									
<b><u>RECYCLING - DISTRICT</u></b>									
15717	Isolation Valve on Kirkland Line (Devlin Rd)	49,200			49,200	-	144	49,056	0%
16716	Line Recycled Water Reservoir	1,320,000			1,320,000	-	18,068	1,301,932	1%
17730	Jameson Solids Pad Dump Bay	15,000			15,000	-	-	15,000	-
17731	Jameson Office Trailer Replacment	25,000			25,000	-	-	25,000	-
17732	Vehicle 710 - 8830 Tractor	200,000			200,000	165,932	-	34,068	-
17733	Vehicle 172 - Ford F150	28,000		5,000	33,000	30,900	-	2,100	-
<b><u>RECYCLING - EXPANSION</u></b>									
13727	North Bay Wate Reuse Project	845,000			845,000	-	283,881	561,119	34%
14726	MST RW Pipeline Construction	-			-	-	313	(313)	-
14727	Split N/S Lines, surge protection	-			-	-	39	(39)	-
15718	LCWD Recycled Water Pipeline - Construction	-			-	-	490	(490)	-
16722	MST RW Pipeline Extension	1,200,000			1,200,000	-	9,588	1,190,412	1%
<b><u>OTHER</u></b>									
13729	Development Technical Support	231,800			231,800	-	34,206	197,594	15%
16717	Admin/Engineering Bldg - Acoustic Improvements	-			-	-	-	-	-
<b>GRAND TOTAL ALL PROJECTS</b>		<b>\$17,180,700</b>	<b>-</b>	<b>-</b>	<b>\$17,180,700</b>	<b>\$757,975</b>	<b>\$1,145,769</b>	<b>\$15,276,958</b>	<b>7%</b>