


Mike Podlech

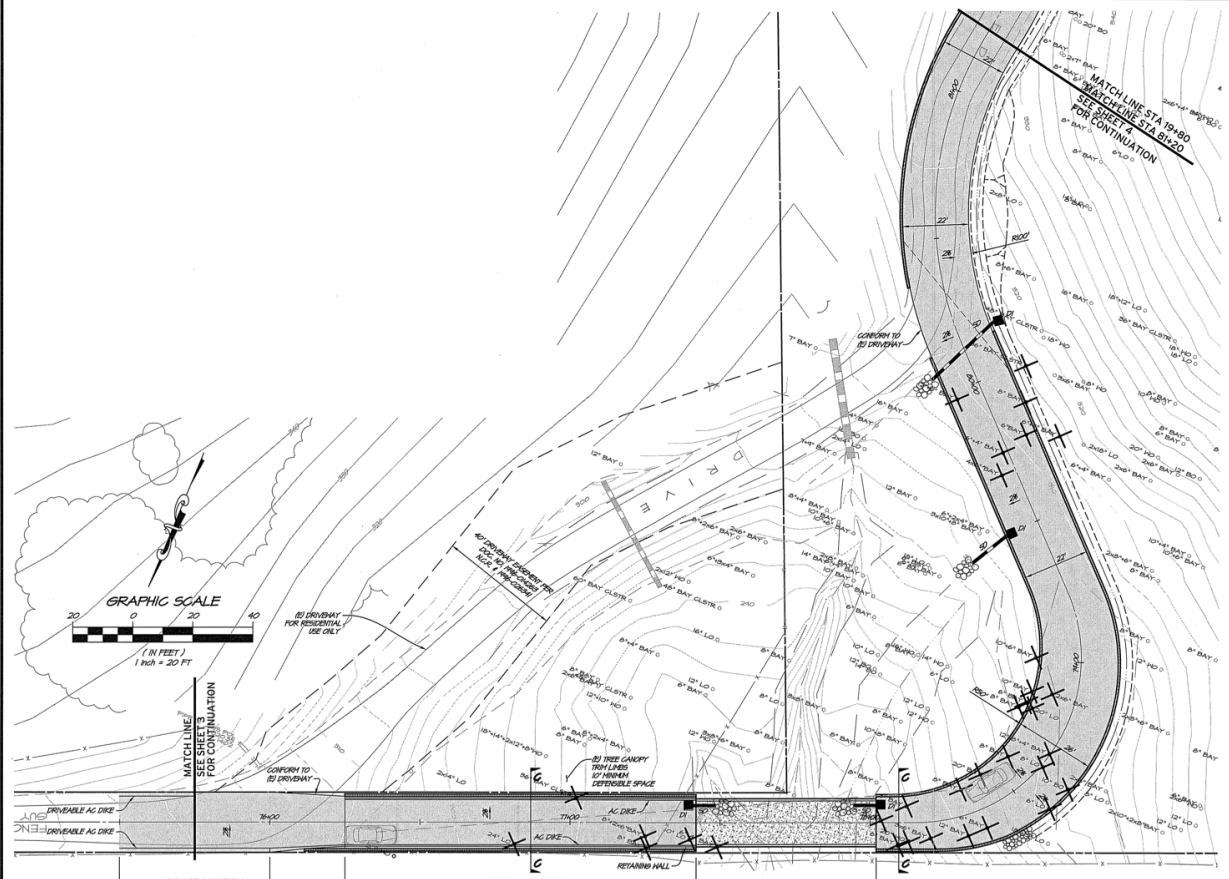
- Independent consulting aquatic ecologist with 25+ years experience in stream assessments and environmental impact analyses
 - Conducted a Stream Classification Assessment of the bridge site and downstream channel pursuant to SWRCB guidelines in 2018
 - Conducted stream assessment of the bridge site pursuant to Napa County's conservation regulations in 2020
- 

Section 18.108.030 of the County's Code of Ordinances defines a "stream" to mean any of the following:

1. A watercourse designated by a solid line or dash and three dots symbol on the largest scale of the United States Geological Survey maps most recently published, or any replacement to that symbol; **NO**

2. Any watercourse which has a well-defined channel with a depth greater than four feet and banks steeper than 3:1 and contains hydrophilic vegetation, riparian vegetation or woody vegetation including tree species greater than ten feet in height; and **YES**

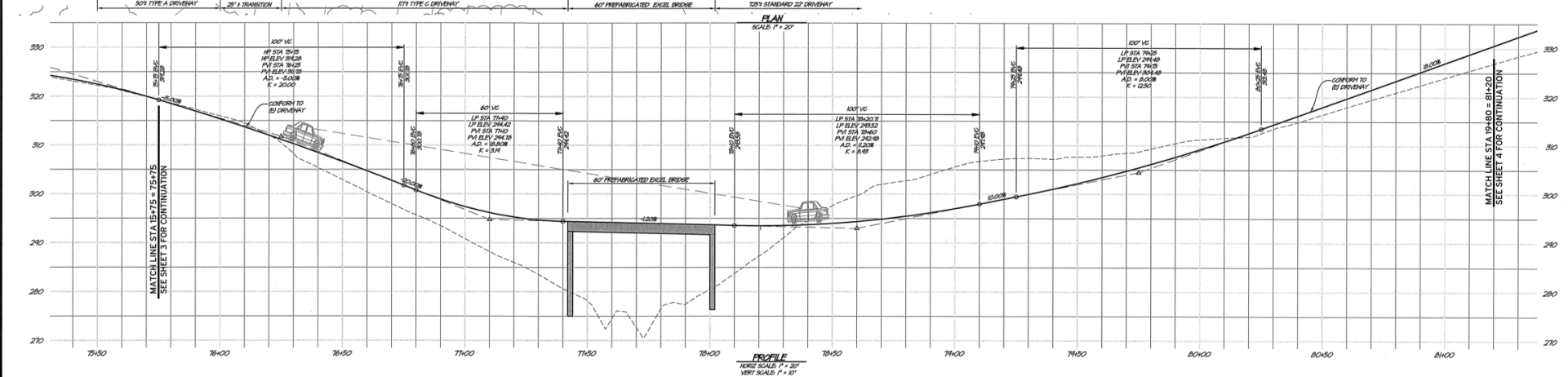
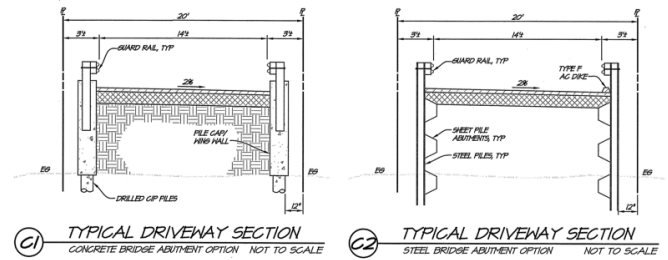
3. Those watercourses listed in Resolution No. 94-19 and incorporated herein by reference. **NO**



TREE REMOVAL
FOR OPTION 2 DRIVEWAY MODIFICATION

SPECIES	SIZE	QTY	SPECIES	SIZE	QTY	SPECIES	SIZE	QTY
BAY	2x6"	1	BAY	12"x10 1/4"	1	LIVE OAK	8"	2
BAY	2x7"	1	BAY	16"	1	LIVE OAK	10"	2
BAY	3x3 1/2"	1	BAY CLUSTER	36"	2	LIVE OAK	12"	1
BAY	3x6"	2	BAY CLUSTER	48"	0	LIVE OAK	14"	1
BAY	4x6"	1	BAY CLUSTER	50"	1	LIVE OAK	18 1/2"	0
BAY	6"	5	BAY CLUSTER	75"	1	LIVE OAK	20"	1
BAY	6 1/4"	3	BLUE OAK	4x6"	1	LIVE OAK	24"	1
BAY	8"	7	BLUE OAK	12x8"	1	LIVE OAK	28"	1
BAY	8 1/2"x6"	1	BLUE OAK	14"	1	WHITE OAK	6x12"	1
BAY	10"	1	BLUE OAK	18"	1	WHITE OAK	8"	1
BAY	10 1/4"	1	BLUE OAK	18"	1	WHITE OAK	12"	2
BAY	10 1/4"	1	BLUE OAK	20"	1	WHITE OAK	14"	1
BAY	12"	1	BLUE OAK	34"	1	WHITE OAK	18"	1
BAY	12 1/4"	1	LIVE OAK	2x10"	0	WHITE OAK	2"	2
BAY	12 1/4"x4"	1	LIVE OAK	6"	1			

OPTION 2 DRIVEWAY TOTAL: 59



ANTHEM WINERY
DRAINAGE CROSSING OPTION 2
CALIFORNIA

NAPA COUNTY

1835 FOURTH STREET
NAPA, CA 94950
OFFICE (707) 252-2300
WWW.RSACON.COM

RSACON
RSA CONSULTING CIVIL ENGINEERS & SURVEYORS • 1981

DATE: JUNE 5, 2018
DRAWN: DR.L.M.H. GEM
DESIGNED: P.S.H.
CHECKED: D.W.F.
JOB NO.: 41110102.0
SHEET NO.: **3A**
5 OF 8 SHEETS

USE PERMIT - NOT FOR CONSTRUCTION



● 10 N 556501 4243359 ±68ft ▲ 295ft



27 Jan 2020, 10:33:19



● 10 N 556510 4243367 ±88ft ▲ 287ft



27 Jan 2020, 10:33:01



● 10 N 556510 4243367 ±42ft ▲ 291ft



27 Jan 2020, 10:24:49



● 10 N 556507 4243358 ±49ft ▲ 294ft



27 Jan 2020, 10:24:32



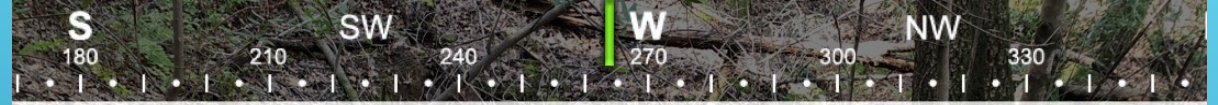
● 38°20'13"N, 122°21'11"W ±52.5ft ▲ 271ft



POD

Damery

02 Feb 2018, 11:51



● 38°20'12"N, 122°21'13"W ±39.4ft ▲ 274ft



D/s of POD

Damery

02 Feb 2018, 11:52