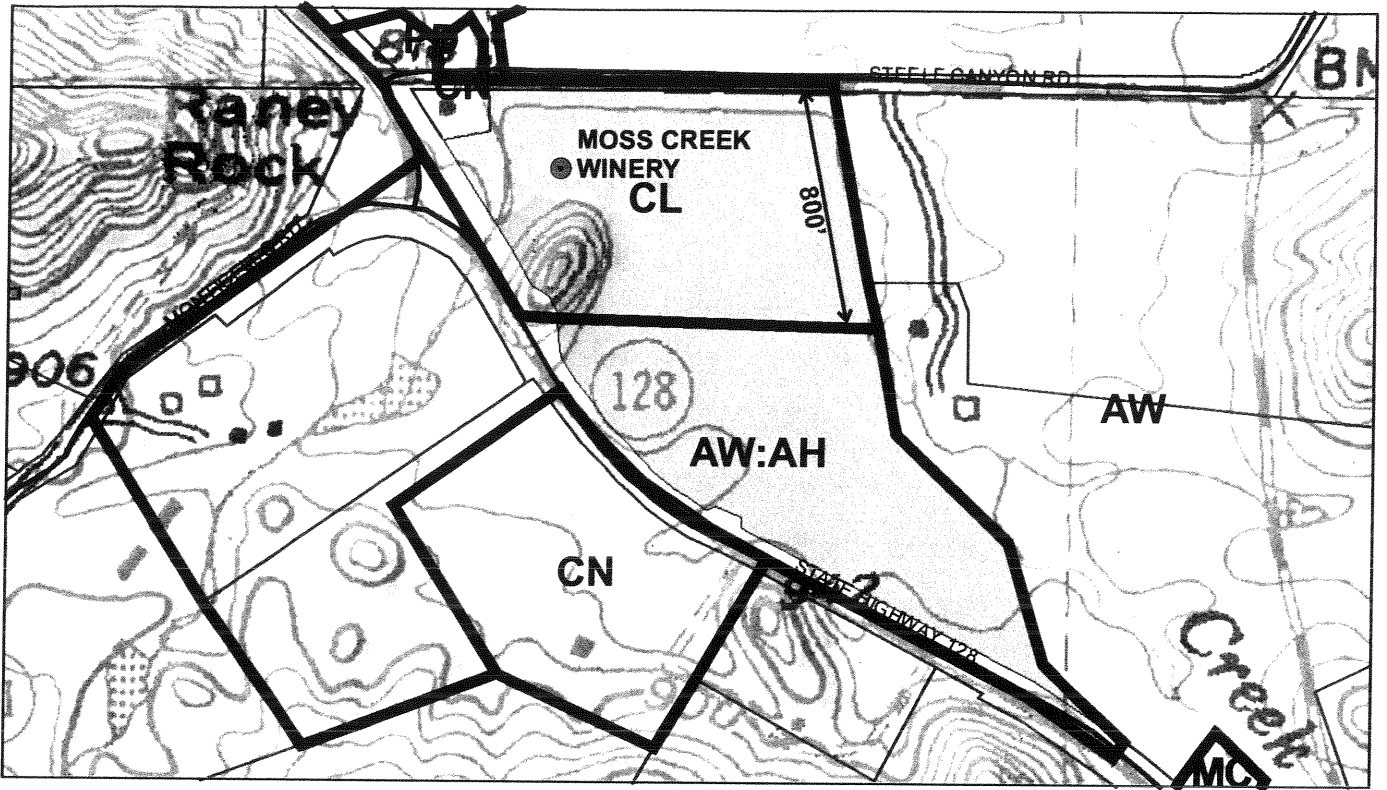
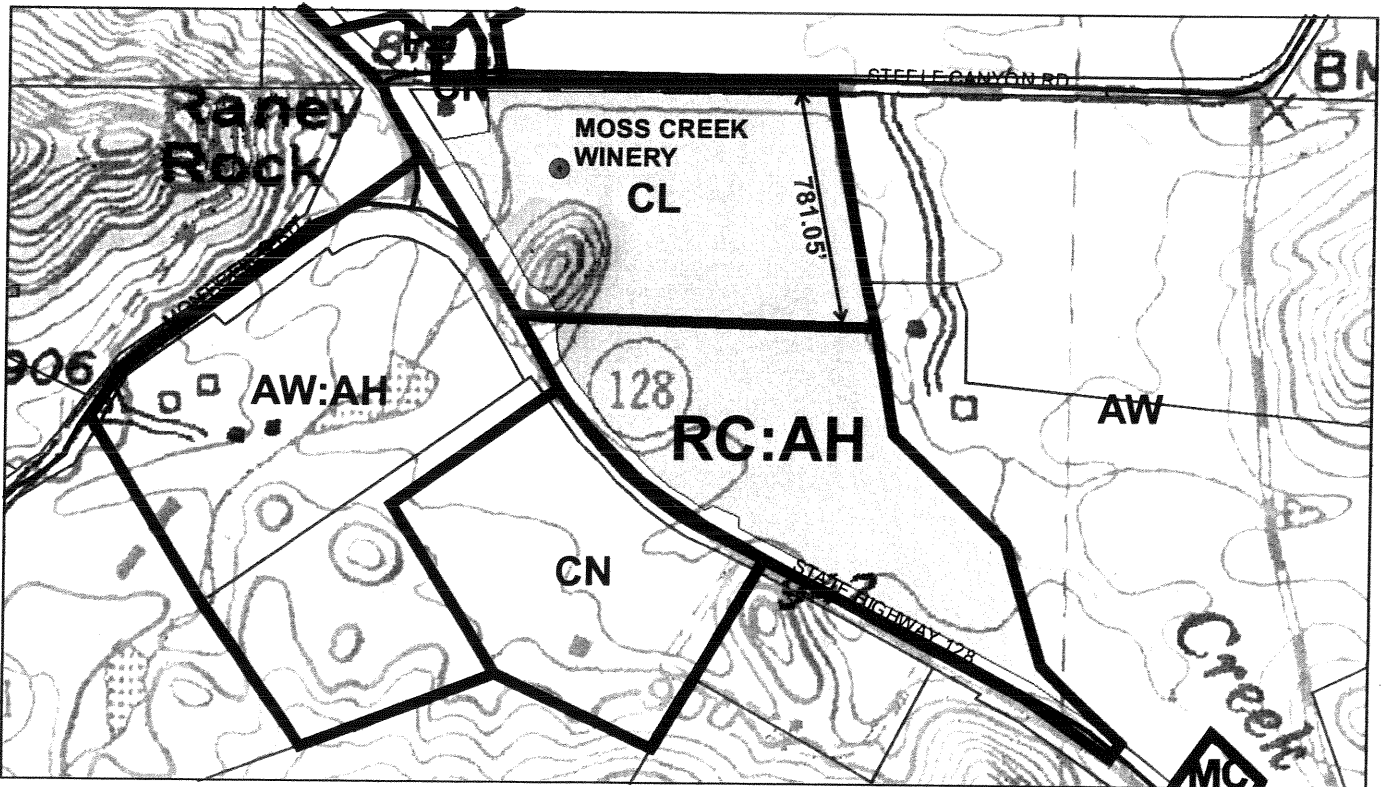


MOSKOWITE



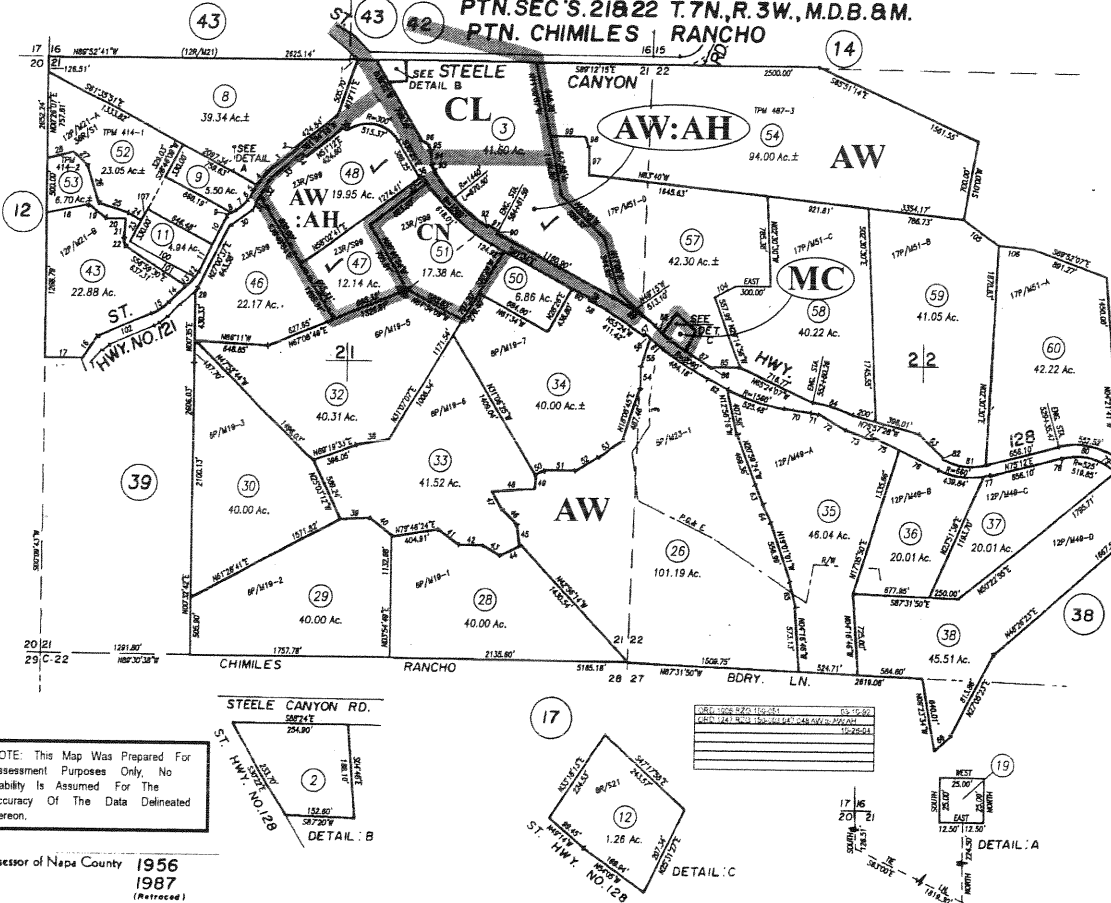
EXISTING ZONING



PROPOSED ZONING

COUNTY ASSESSOR'S PARCEL MAP
PTN. SEC'S. 21&22 T.7N., R. 3W., M.D.B. & M.
PTN. CHIMILES RANCHO

Tax Area Code **32-15**
 72031

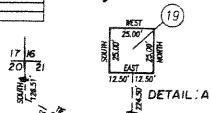
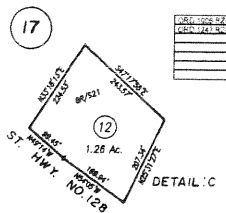
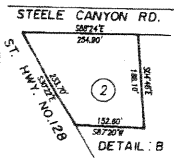


1.	N86°14'24"W	51.80'
2.	N62°34'30"W	74.81'
3.	N57°11'17"E	338.80'
4.	N33°32'25"E	174.40'
5.	S57°14'47"W	80.52'
6.	S21°12'20"W	41.87'
7.	P-500	1=184.51'
8.	S27°02'34"W	42.80'
9.	S27°02'34"W	42.80'
10.	S27°02'34"W	42.80'
11.	N86°14'24"W	51.80'
12.	P-500	1=184.51'
13.	P-500	1=184.51'
14.	S27°02'34"W	42.80'
15.	P-500	1=184.51'
16.	S31°44'03"W	208.20'
17.	S27°02'34"W	42.80'
18.	N78°18'53"E	311.58'
19.	S27°02'34"W	42.80'
20.	N21°11'00"E	177.01'
21.	S27°11'18"W	163.84'
22.	P-500	1=184.51'
23.	N27°21'00"E	145.02'
24.	N27°21'00"E	145.02'
25.	N27°21'00"E	145.02'
26.	N14°53'21"W	302.81'
27.	N42°28'22"E	178.00'
28.	S27°11'18"W	228.84'
29.	N42°44'18"E	33.85'
30.	N27°21'00"E	228.84'
31.	N27°21'00"E	228.84'
32.	N27°21'00"E	228.84'
33.	N27°21'00"E	228.84'
34.	S27°44'18"E	33.85'
35.	S27°44'18"E	33.85'
36.	S27°44'18"E	33.85'
37.	P-500	1=184.51'
38.	N27°21'00"E	228.84'
39.	N27°21'00"E	228.84'
40.	N27°21'00"E	228.84'
41.	N27°21'00"E	228.84'
42.	N27°21'00"E	228.84'
43.	N27°21'00"E	228.84'
44.	N27°21'00"E	228.84'
45.	N27°21'00"E	228.84'
46.	N27°21'00"E	228.84'
47.	N27°21'00"E	228.84'
48.	N27°21'00"E	228.84'
49.	N27°21'00"E	228.84'
50.	N27°21'00"E	228.84'
51.	N27°21'00"E	228.84'
52.	N27°21'00"E	228.84'
53.	N27°21'00"E	228.84'
54.	N27°21'00"E	228.84'
55.	N27°21'00"E	228.84'
56.	N27°21'00"E	228.84'
57.	N27°21'00"E	228.84'
58.	N27°21'00"E	228.84'
59.	N27°21'00"E	228.84'
60.	N27°21'00"E	228.84'



NOTE: This Map Was Prepared For Assessment Purposes Only. No Liability Is Assumed For The Accuracy Of The Data Delineated Hereon.

Assessor of Napa County **1956**
1987
 (Retrosced)



106.	N77°21'20"E	208.00'
107.	N27°21'00"E	228.84'
108.	N27°21'00"E	228.84'
109.	N27°21'00"E	228.84'
110.	N27°21'00"E	228.84'
111.	N27°21'00"E	228.84'
112.	N27°21'00"E	228.84'
113.	N27°21'00"E	228.84'
114.	N27°21'00"E	228.84'
115.	N27°21'00"E	228.84'
116.	N27°21'00"E	228.84'
117.	N27°21'00"E	228.84'
118.	N27°21'00"E	228.84'
119.	N27°21'00"E	228.84'
120.	N27°21'00"E	228.84'
121.	N27°21'00"E	228.84'
122.	N27°21'00"E	228.84'
123.	N27°21'00"E	228.84'
124.	N27°21'00"E	228.84'
125.	N27°21'00"E	228.84'
126.	N27°21'00"E	228.84'
127.	N27°21'00"E	228.84'
128.	N27°21'00"E	228.84'
129.	N27°21'00"E	228.84'
130.	N27°21'00"E	228.84'
131.	N27°21'00"E	228.84'
132.	N27°21'00"E	228.84'
133.	N27°21'00"E	228.84'
134.	N27°21'00"E	228.84'
135.	N27°21'00"E	228.84'
136.	N27°21'00"E	228.84'
137.	N27°21'00"E	228.84'
138.	N27°21'00"E	228.84'
139.	N27°21'00"E	228.84'
140.	N27°21'00"E	228.84'
141.	N27°21'00"E	228.84'
142.	N27°21'00"E	228.84'
143.	N27°21'00"E	228.84'
144.	N27°21'00"E	228.84'
145.	N27°21'00"E	228.84'
146.	N27°21'00"E	228.84'
147.	N27°21'00"E	228.84'
148.	N27°21'00"E	228.84'
149.	N27°21'00"E	228.84'
150.	N27°21'00"E	228.84'
151.	N27°21'00"E	228.84'
152.	N27°21'00"E	228.84'
153.	N27°21'00"E	228.84'
154.	N27°21'00"E	228.84'
155.	N27°21'00"E	228.84'
156.	N27°21'00"E	228.84'
157.	N27°21'00"E	228.84'
158.	N27°21'00"E	228.84'
159.	N27°21'00"E	228.84'
160.	N27°21'00"E	228.84'
161.	N27°21'00"E	228.84'
162.	N27°21'00"E	228.84'
163.	N27°21'00"E	228.84'
164.	N27°21'00"E	228.84'
165.	N27°21'00"E	228.84'

7F	12-07-2004
7-6-87	
2-5-90	
2-28-90	
6-7-90	
150-52 RS	1-23-04
REVISION	DATE

32-15