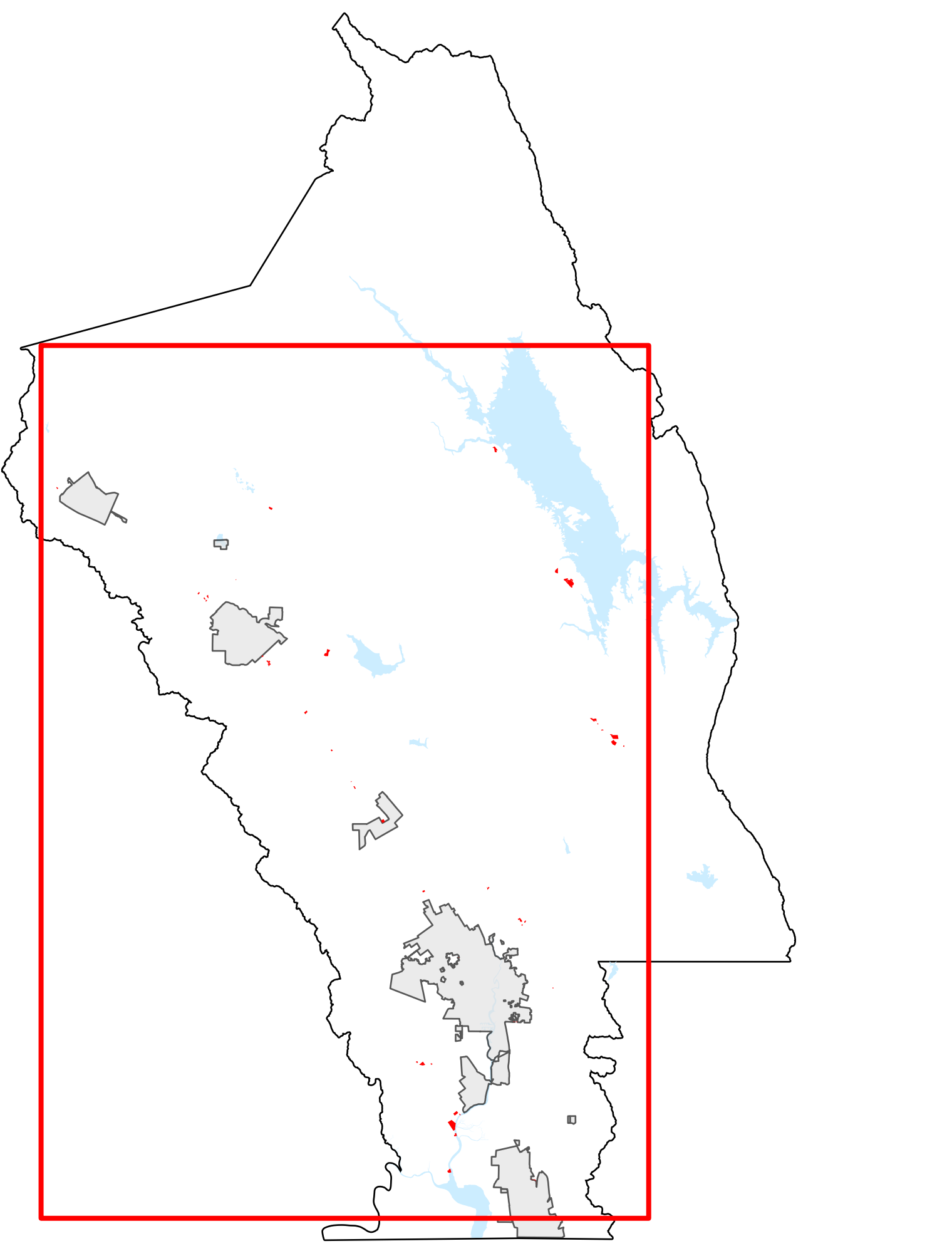
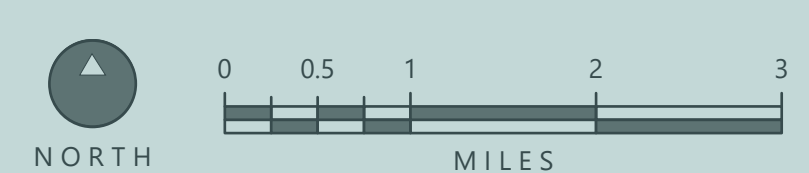


- Commercially Zoned Parcels
- General Plan, 2008-2030
- OPEN SPACE
- Agricultural Resource
- Agriculture, Watershed, & Open Space
- TRANSPORTATION
- TRANSPORTATION, MINERAL RESOURCES
- URBAN
- Cities
- Industrial
- Public-Institutional
- Rural Residential
- Study Area
- Urban Residential



# Renewable Energy Ordinance Zoning and General Plan Designations AR, AWOS, RR

Disclaimer: This map was prepared for informational purposes only. No liability is assumed for the accuracy of the data delineated hereon.

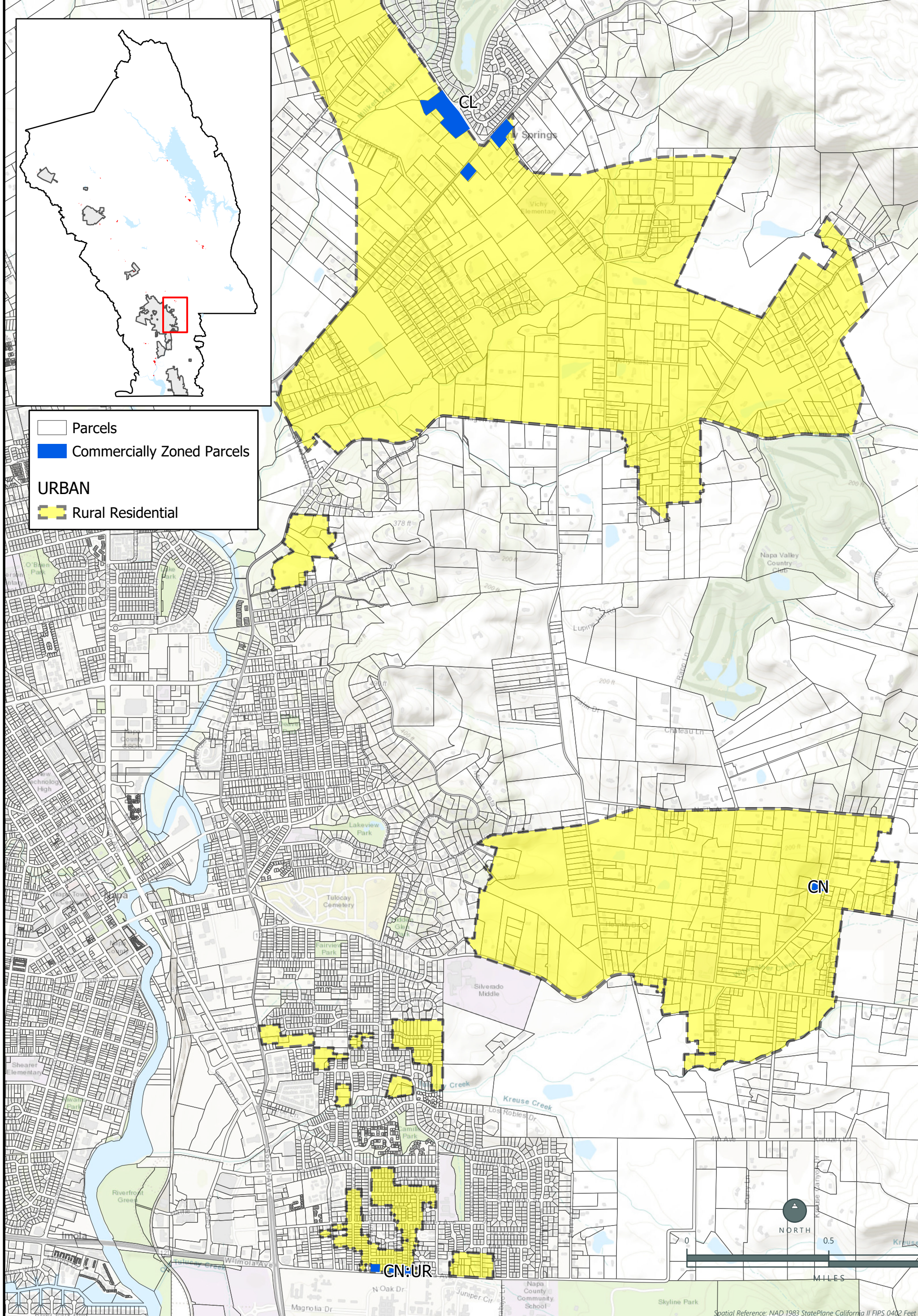


PLANNING, BUILDING, & ENVIRONMENTAL SERVICES  
 1195 THIRD STREET, SUITE 210  
 NAPA, CA 94559



Spatial Reference: NAD 1983 StatePlane California II FIPS 0402 Feet Date: 2019.11.06

(707) 253-4417

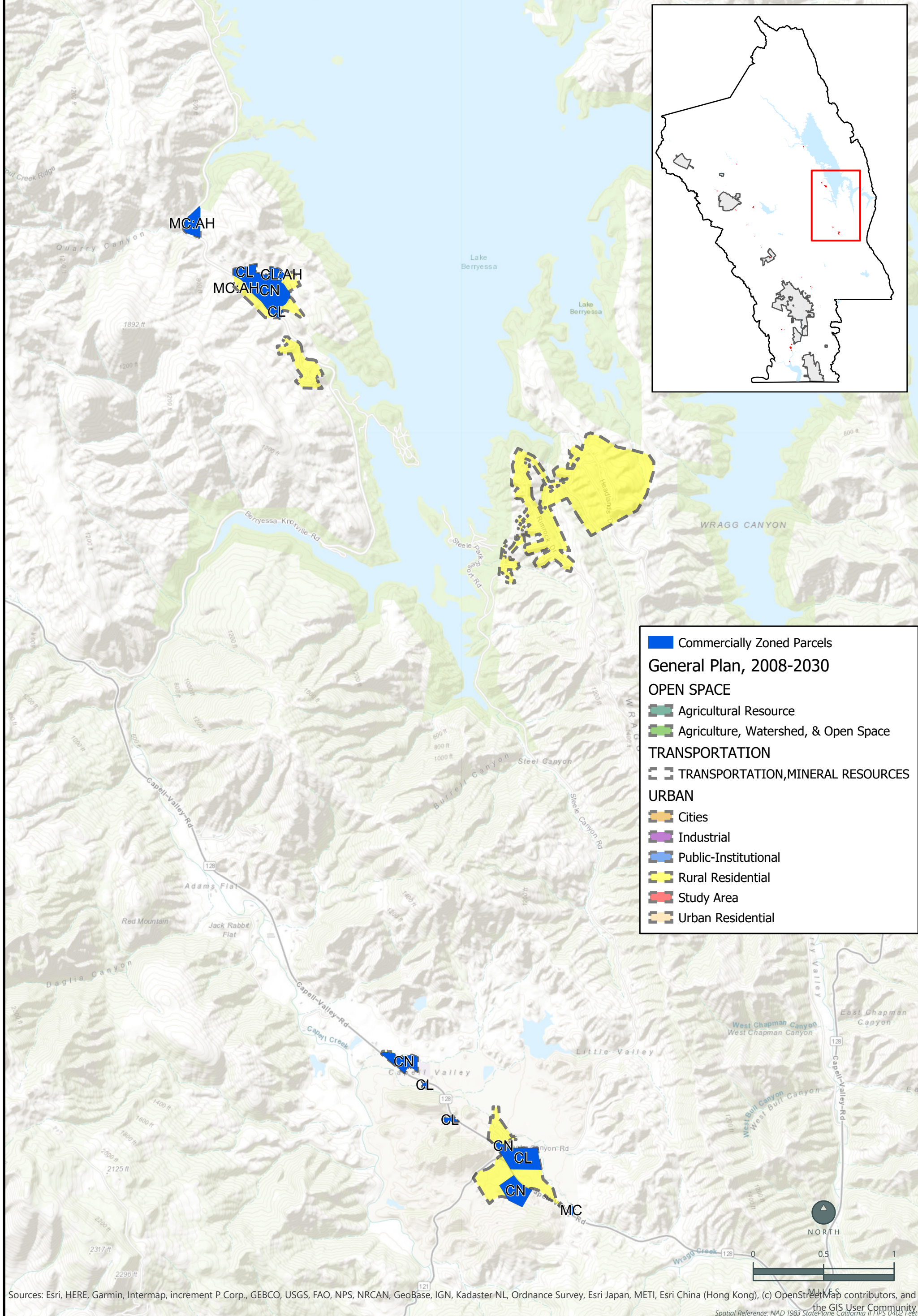


# Coombsville Area: Napa County General Plan & Renewable Energy Ordinance Zoning

PLANNING, BUILDING, & ENVIRONMENTAL SERVICES  
 1195 THIRD STREET, SUITE 210  
 NAPA, CA 94559  
 Date: 2019.11.06



Disclaimer: This map was prepared for informational purposes only. No liability is assumed for the accuracy of the data delineated hereon.



Sources: Esri, HERE, Garmin, Intermap, increment P Corp., GEBCO, USGS, FAO, NPS, NRCAN, GeoBase, IGN, Kadaster NL, Ordnance Survey, Esri Japan, METI, Esri China (Hong Kong), (c) OpenStreetMap contributors, and the GIS User Community  
 Spatial Reference: NAD 1983 StatePlane California II FIPS 0402 Feet

**Figure 4: South Berryessa General Plan & Renewable Energy Ordinance Zoning**

PLANNING, BUILDING, & ENVIRONMENTAL SERVICES  
 1195 THIRD STREET, SUITE 210  
 NAPA, CA 94559  
 Date: 2019.11.06



Disclaimer: This map was prepared for informational purposes only. No liability is assumed for the accuracy of the data delineated hereon.