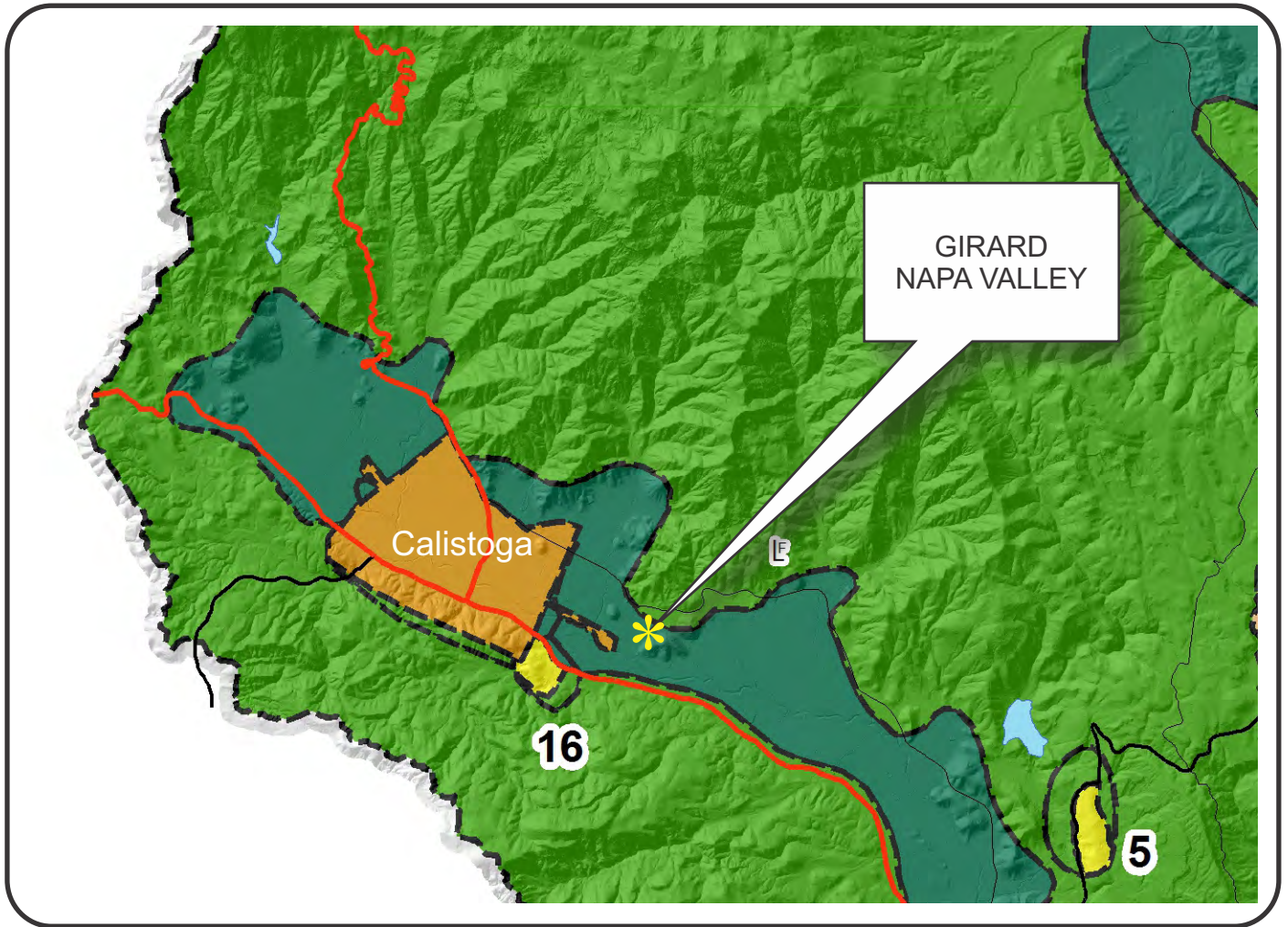









NAPA COUNTY LAND USE PLAN 2008 - 2030





LEGEND









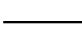



URBANIZED OR NON-AGRICULTURAL

-  Study Area
-  Cities
-  Urban Residential*
-  Rural Residential*
-  Industrial
-  Public-Institutional
-  Napa Pipe Mixed Use

OPEN SPACE

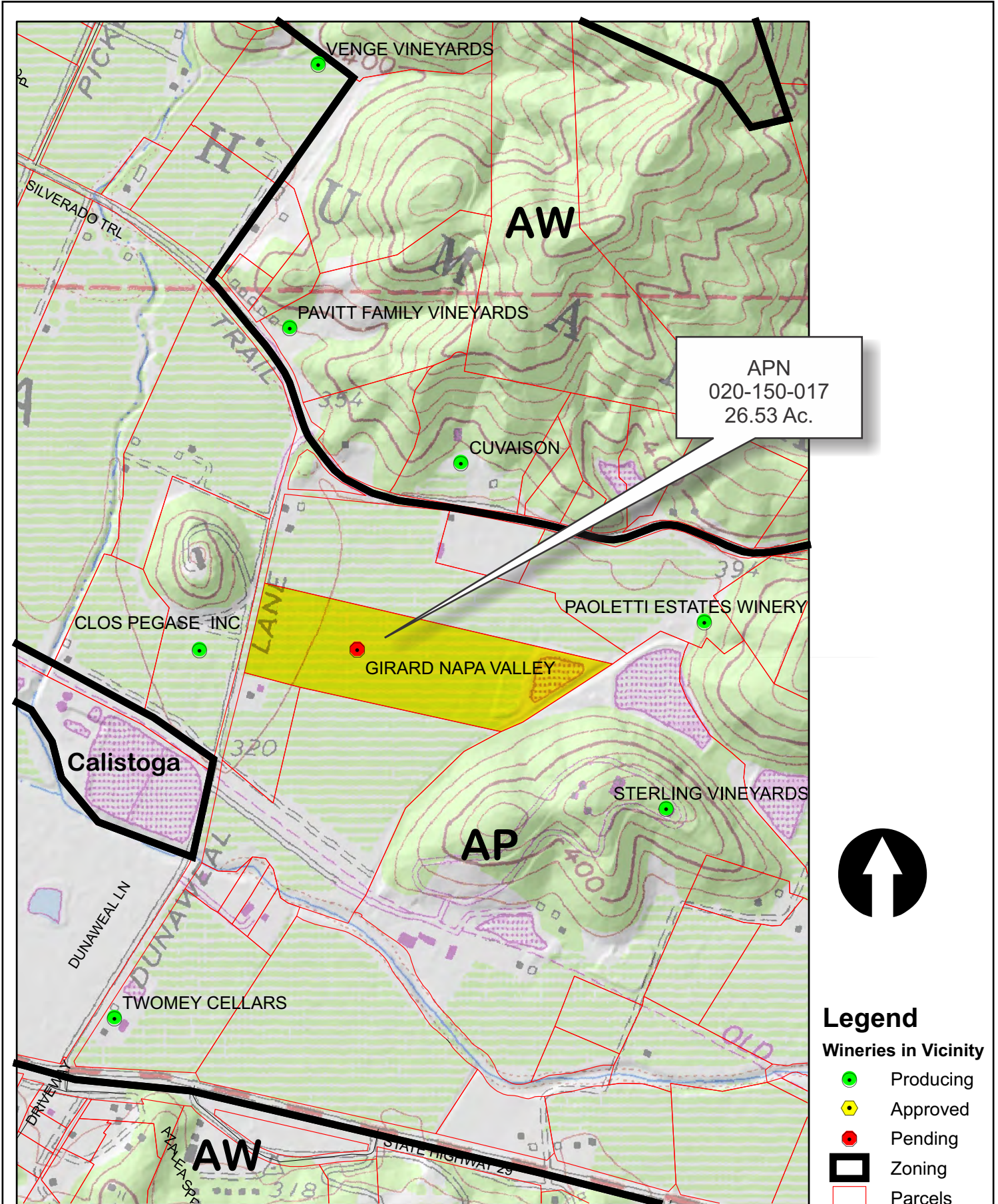
-  Agriculture, Watershed & Open Space
-  Agricultural Resource

TRANSPORTATION

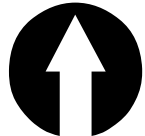
-  Mineral Resource
-  Limited Access Highway
-  Major Road
-  American Canyon ULL
-  City of Napa RUL
-  Landfill - General Plan
-  Secondary Road
-  Airport
-  Railroad
-  Airport Clear Zone

* See Action Item AG/LU-114.1 regarding agriculturally zoned areas within these land use designations

GIRARD NAPA VALLEY



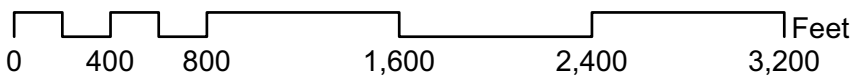
APN
020-150-017
26.53 Ac.



Legend

Wineries in Vicinity

- Producing
- Approved
- Pending
- Zoning
- Parcels



GIRARD NAPA VALLEY



Existing
Conditions

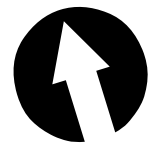
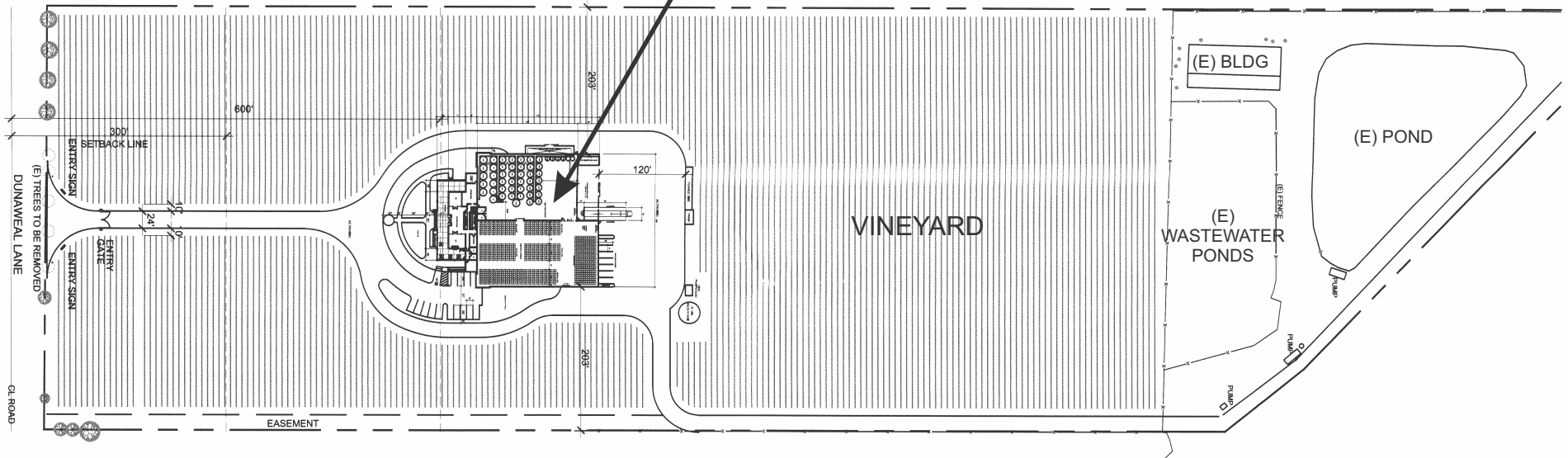


Google earth

Eye alt 2757 ft

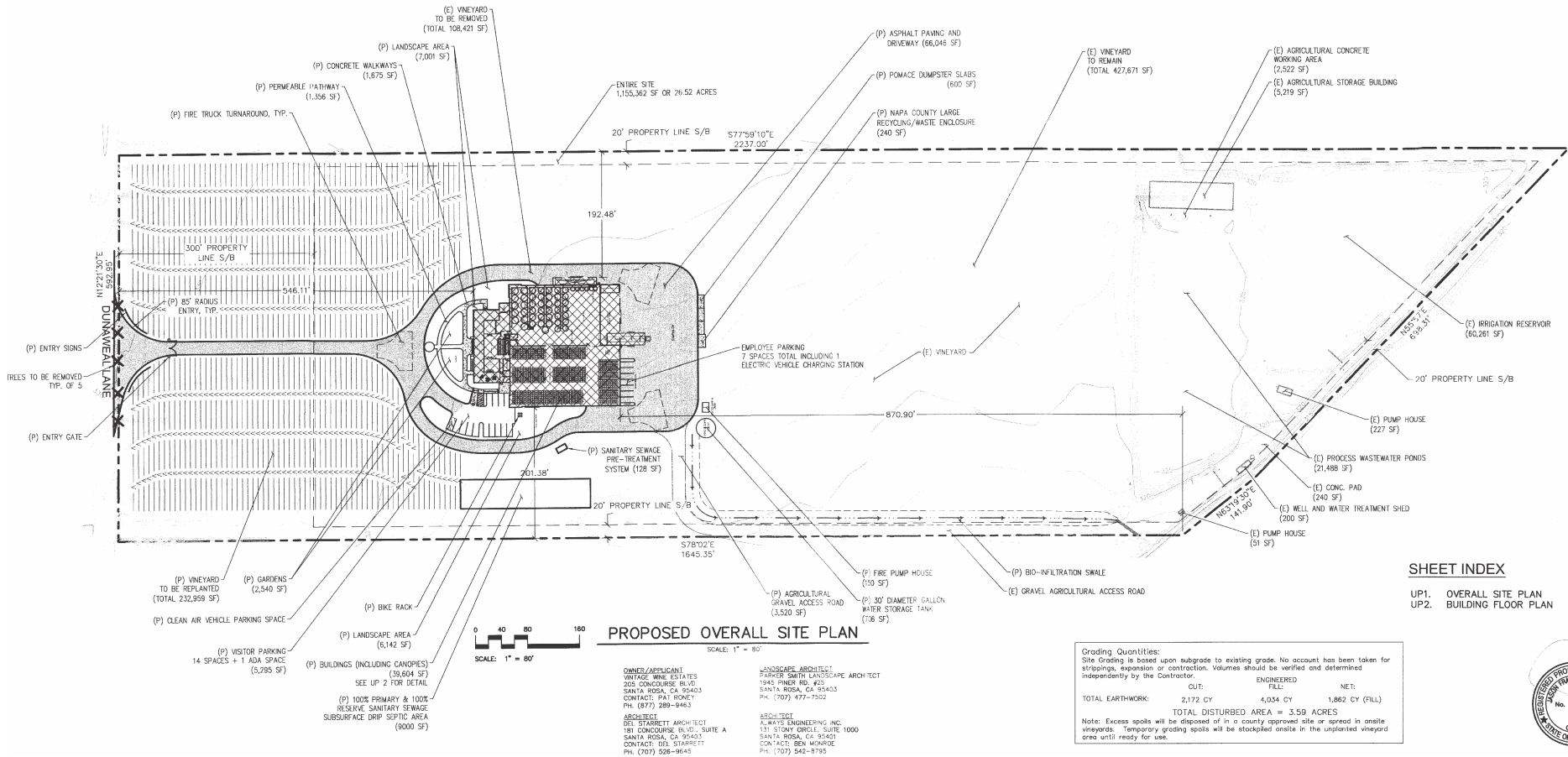
GIRARD NAPA VALLEY

PROPOSED WINERY

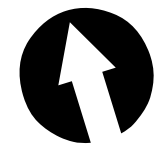


Proposed Site Plan

GIRARD NAPA VALLEY

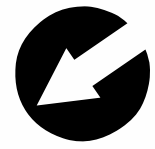
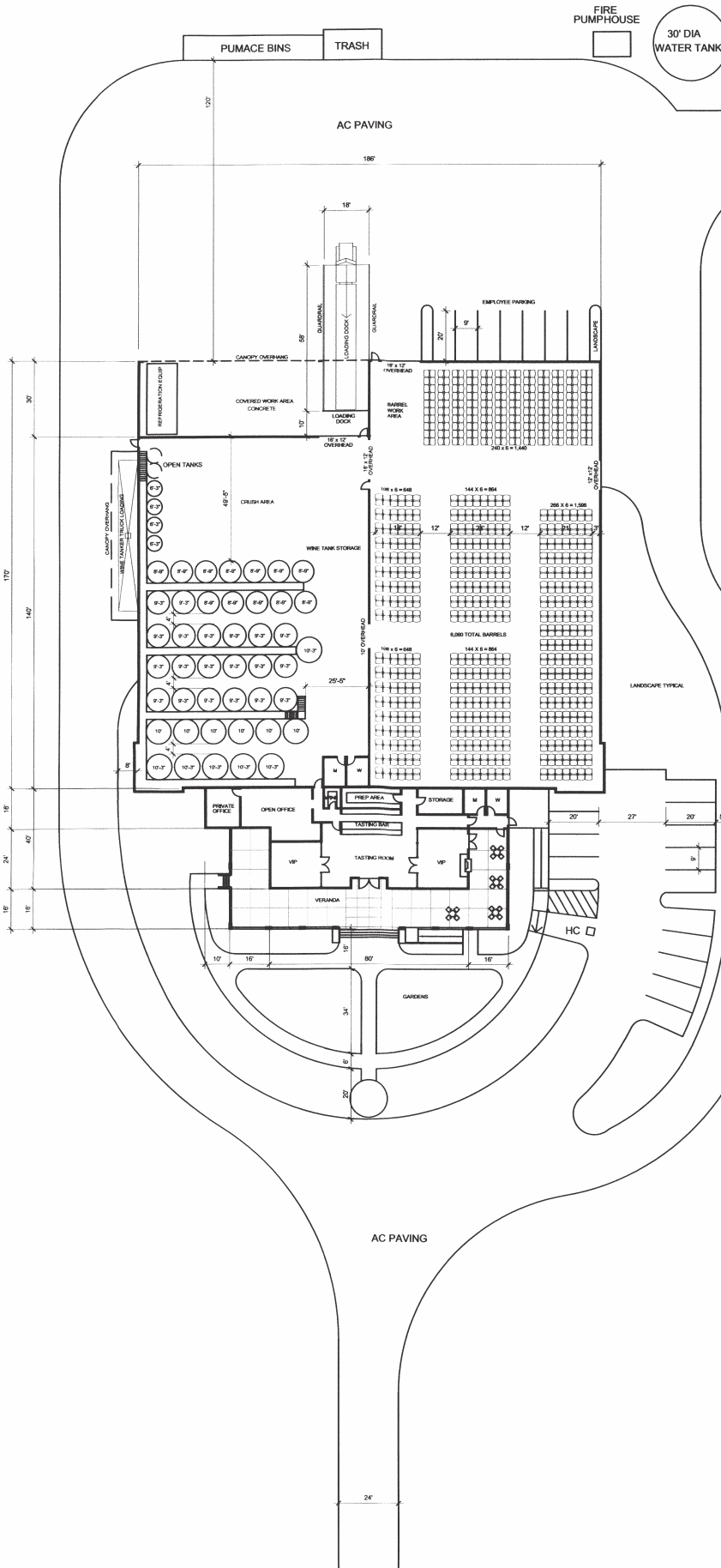


SHEET INDEX
UP1. OVERALL SITE PLAN
UP2. BUILDING FLOOR PLAN



Engineering Site Plan

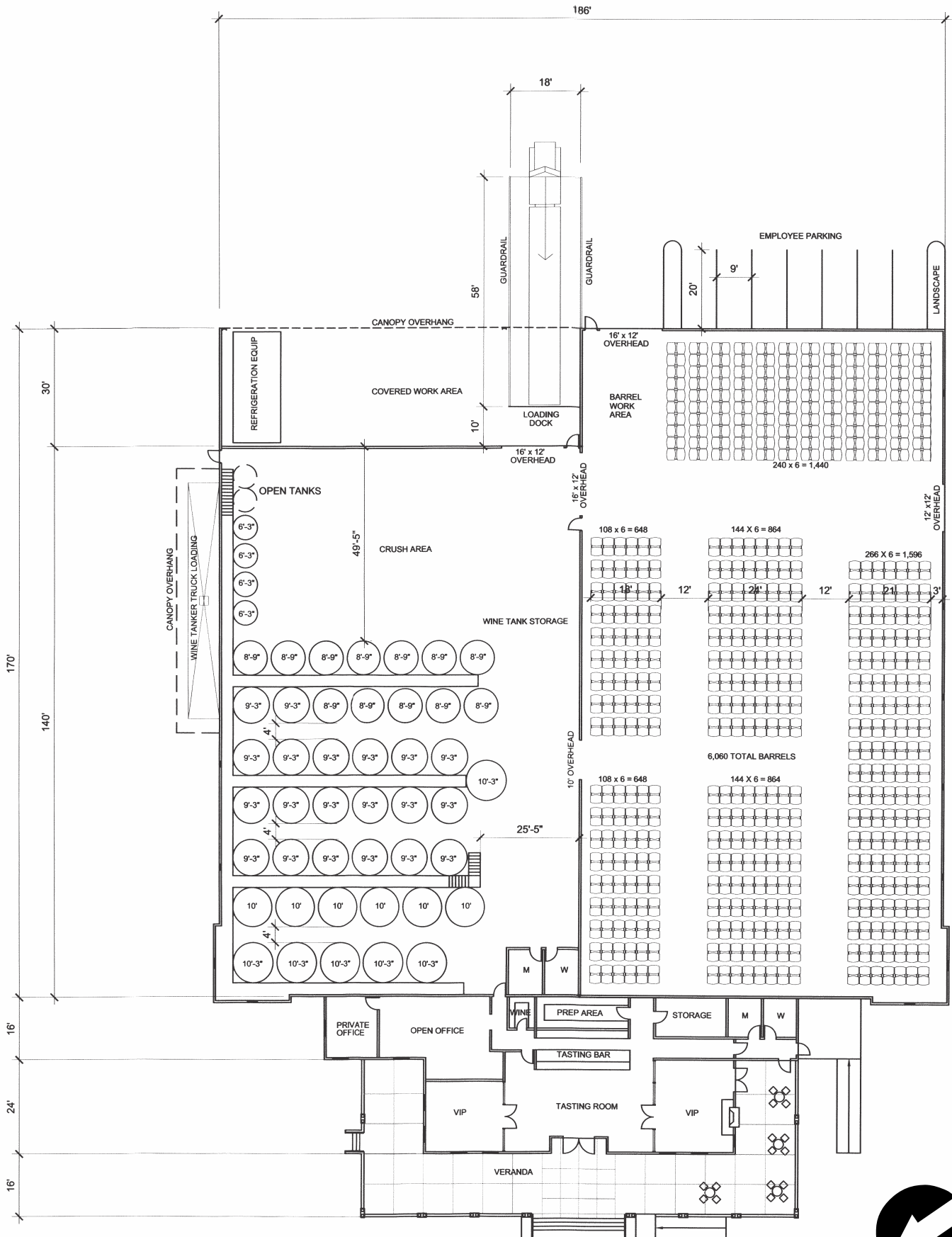
GIRARD NAPA VALLEY



Site Plan Detail

BARRELS	15,875 SF
TANKS	13,080 SF
TASTING	3,010 SF
OFFICE	806 SF
<hr/>	
TOTAL BUILDING	32,771 SF
COVERED WORK AREA	2,781 SF
COVERED VERANDA	2,628 SF

GIRARD NAPA VALLEY



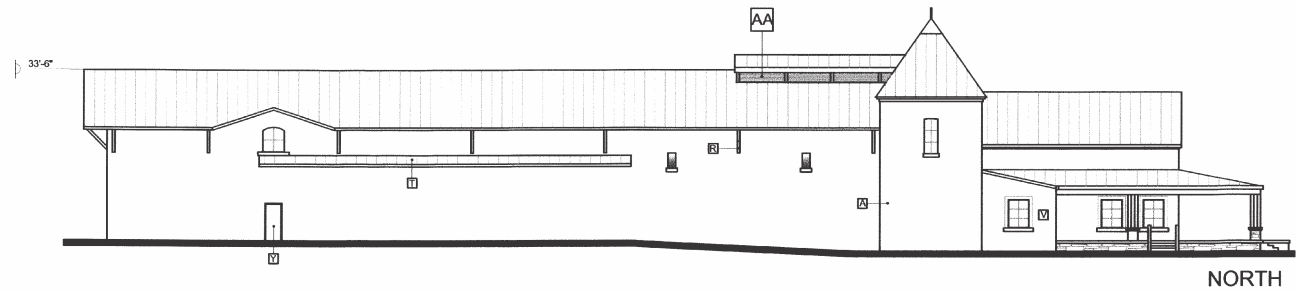
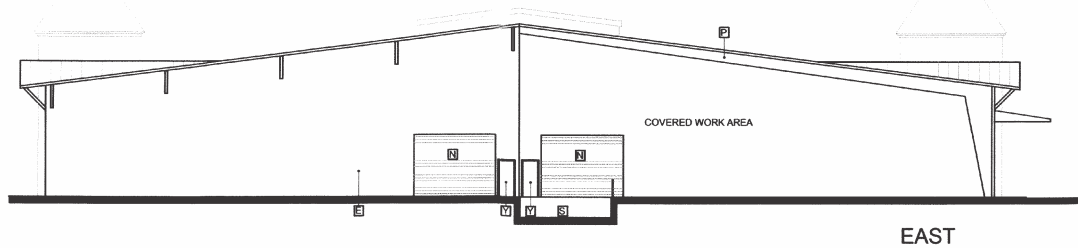
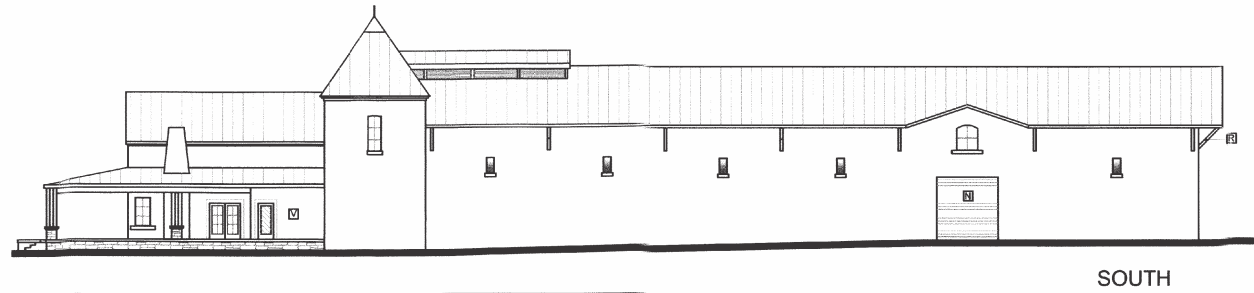
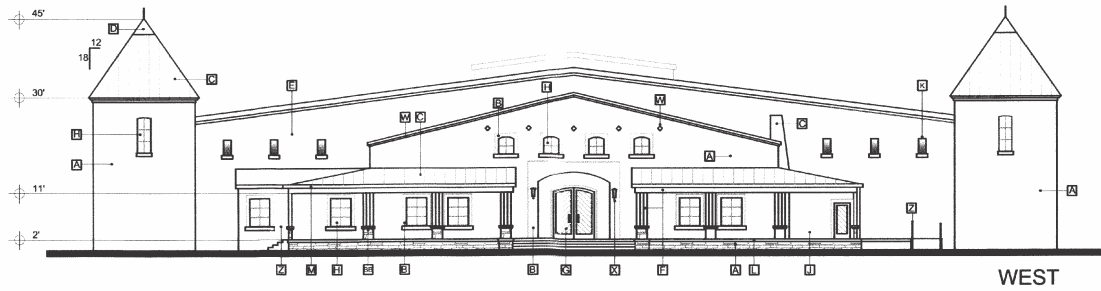
Floor Plan



GIRARD NAPA VALLEY

MATERIAL LEGEND

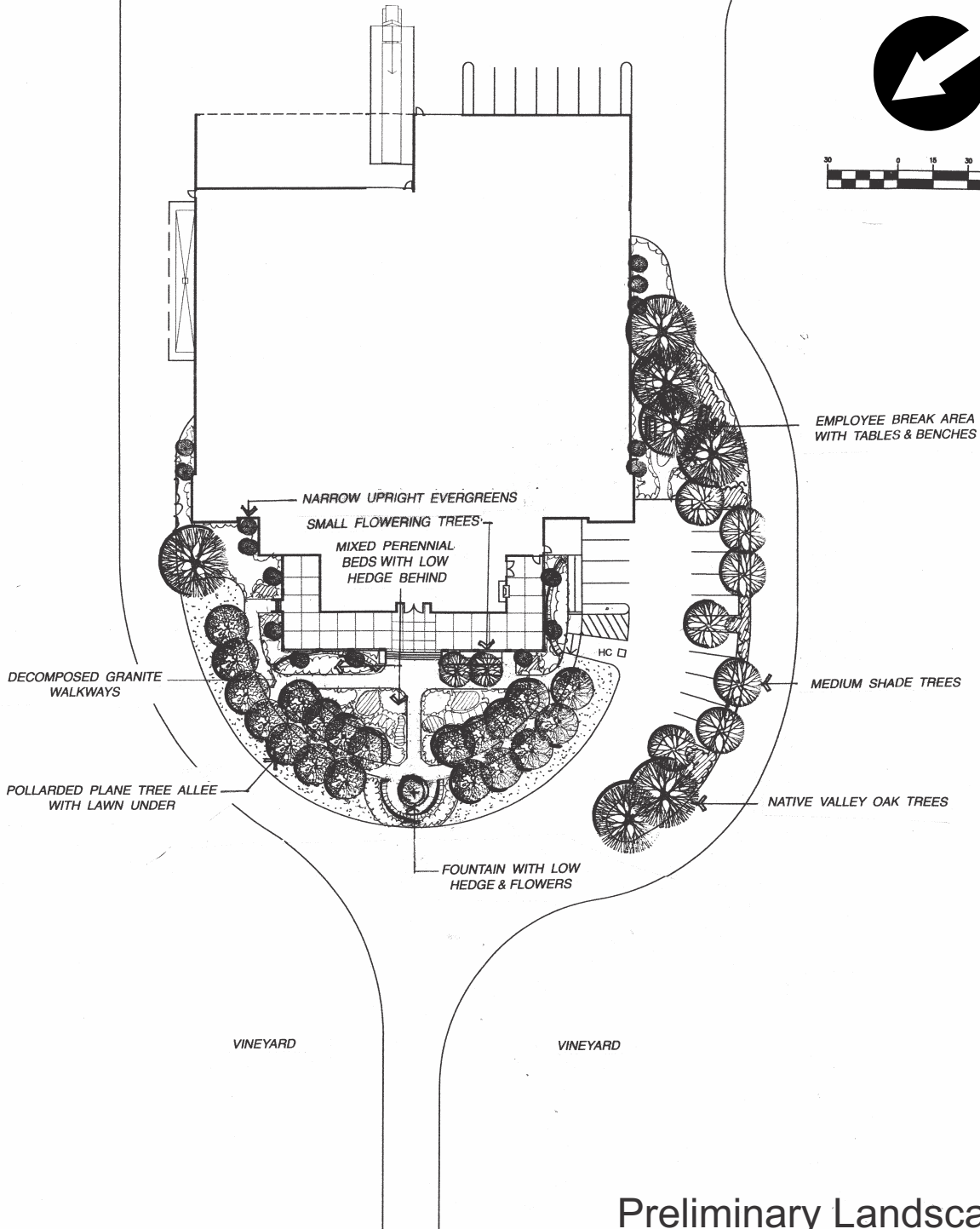
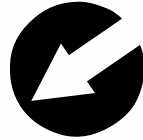
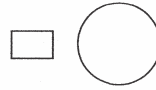
- [A] CONCRETE WITH STONE VENEER
- [B] PLASTER TRIM
- [C] METAL ROOFING
- [D] METAL CAPPING
- [E] CONCRETE
- [F] WOOD BEAM AND POSTS
- [G] WOOD DOORS
- [H] DIVIDED LITE WINDOWS WITH LOW E GLASS AND STONE LEDGE
- [J] EXTERIOR PLASTER
- [K] RECESSED WINDOW WITH STONE LEDGE
- [L] CONCRETE VERANDA
- [M] PAINTED METAL GUTTER
- [N] ROLL-UP DOOR
- [P] EXPOSED METAL FRAMING
- [Q] STONE CHIMNEY
- [R] METAL KICKERS
- [S] LOADING DOCK
- [T] TRUCK LOADING CANOPY
- [V] PLASTER
- [W] DECORATIVE BOLTED IRON PLATES
- [X] ENTRANCE LIGHTS
- [Y] PAINTED METAL MANDOORS
- [Z] PAINTED METAL HANDRAILS
- [AA] VENTED LOUVERS
- [BB] STONE BASE WITH CAP



GIRARD NAPA VALLEY



POLLARDED PLANE TREE ALLEE















SEE ENTRY DRIVE FROM DUNAWEALE LANE AT RIGHT

Preliminary Landscape Plan



GIRARD NAPA VALLEY

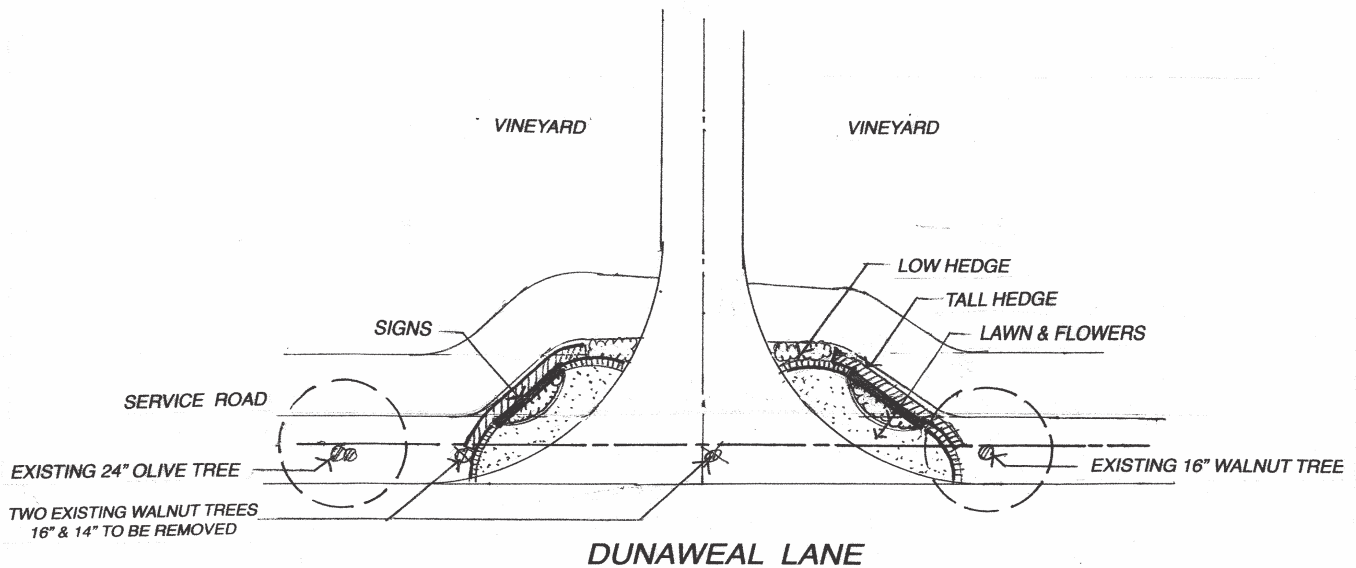
PLANT LEGEND

SYMBOL	PLANT DESCRIPTION & SPECIES	PLANTING SIZE	WATER USE
	EXISTING TREES TO REMAIN <i>Olea europea</i> / Olive <i>Juglans hybrid</i> / Walnut		
	EXISTING TREES TO BE REMOVED <i>Juglans hybrid</i> / Walnut		
	LARGE NATIVE SHADE TREES <i>Quercus lobata</i> / CA Valley Oak	24" Box	Low
	MEDIUM SHADE TREES WITH FALL COLOR <i>Pistacia chinensis</i> 'Keith Davey' / Chinese Pistache	24" Box	Low
	ALLEE OF POLLARDED TREES <i>Platanus acerifolia</i> 'Columbia' / London Plane Tree	24" Box	Moderate
	SMALL FLOWERING TREES <i>Lagerstoeimia hybrid</i> 'Tuscarorra' / Coral Crape Myrtle	24" Box	Low
	NARROW UPRIGHT EVERGREEN SHRUB/TREES <i>Juniperus chinensis</i> 'Skyrocket' / Skyrocket Juniper	15 Gal.	Low
	LOW & TALL HEDGES <i>Buxus microphylla</i> 'Var.' / Boxwood (Low) <i>Prunus lyonii</i> / Catalina Island Cherry (Tall)	5 Gal.	Low/Mod.
	LOW TO MEDIUM SHRUBS & GRASSES <i>Arctostaphylos densiflora</i> 'Howard McMinn' / McMinn Manzanita <i>Ceanothus</i> 'Skylark' / CA Lilac <i>Mahonia pinnata</i> 'Ken Hartman' / CA False Holly <i>Loropetalum chinensis</i> var. / Purpleleaf Loropetalum <i>Arctostaphylos</i> 'Emerald Carpet' / G.C. Manzanita <i>Erigeron karvinskianus</i> / Santa Barbara Daisy <i>Calamagrostis arundinacea</i> 'Karl Foerster' / Feather Reed Grass <i>Myoporum parviflora</i> 'Putah Creek' / Ground Cover Myoporum	5 Gal.	Low
	PERENNIALS & ACCENT GROUND COVERS <i>Lavendula</i> Varieties / Lavender <i>Rosa floribunda</i> varieties / Floribunda Roses <i>Salvia gregii</i> , <i>spatheacea</i> , <i>leucantha</i> / Sage <i>Gaura lindheimeri</i> 'Siskiyou Pink' / Pink Gaura <i>Hemerocallis</i> 'Evergreen Pink or Yellow' / Evergreen Daylilies <i>Pennisetum orientale</i> / Oriental Fountain Grass	1/2 Gal.	Low/Mod.
	ACCENT GROUND COVERS & FLOWERS Annuals / Seasonal Flowers <i>Festuca californica</i> 'Serpentine Blue' / Blue CA Fescue <i>Tulbaghia violacea</i> 'Silver Lace' / Variegated Society Garlic <i>Rosa</i> 'Flower Carpet' var. / Ground Cover Roses	4" / 1 Gal.	Low/Mod.
	LAWN	Sod	Mod./High

LANDSCAPE NOTES

1. ALL PLANTINGS TO BE IRRIGATED WITH AUTOMATIC DRIP IRRIGATION SYSTEM (SUBSURFACE DRIP EMITTERS FOR LAWN AREAS). CONTROLLER TO HAVE MULTIPLE PROGRAMS & RAIN SHUTOFF DEVICE. PLANTINGS AND IRRIGATION SYSTEM WILL MEET THE LATEST REQUIREMENTS OF NAPA COUNTY'S 'WATER EFFICIENCY ORDINANCE'.

2. A TREE PROTECTION PLAN WILL BE INCLUDED ON THE CIVIL ENGINEERING PLANS THAT WILL REQUIRE PROTECTIVE FENCING; RESTRICTIONS ON GRADING OR TRENCHING WITHIN THE DRILINES OF PROTECTED TREES, NO STORAGE OF MATERIALS WITHIN FENCED AREAS, ETC.



GIRARD NAPA VALLEY



GIRARD NAPA VALLEY



GIRARD NAPA VALLEY

