

MAP
OR
SUBDIVISION
OF

THOMPSON'S SOSCOL
RANCH
IN MAPA COUNTY CAL

JUNE 1889

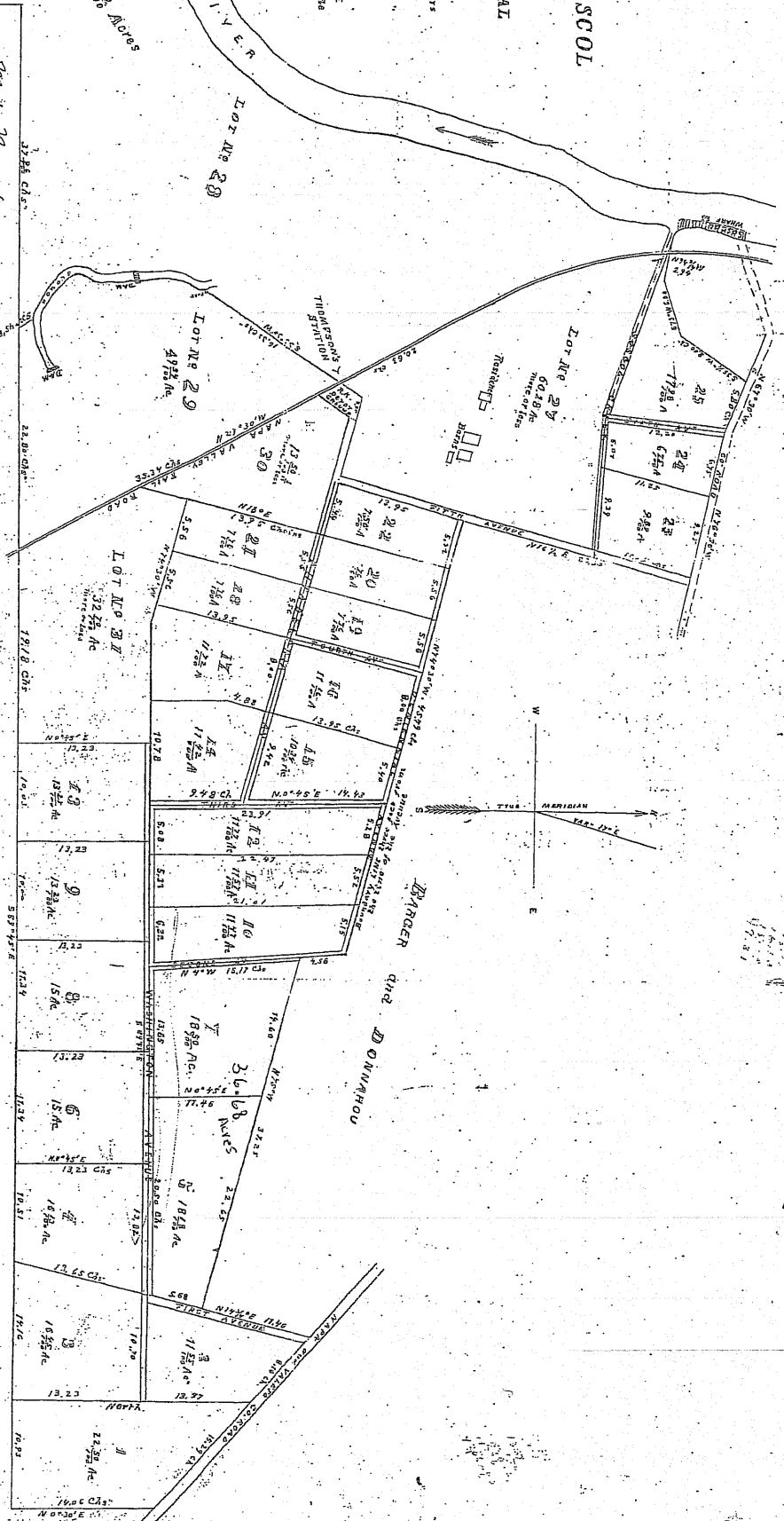
Drawn and calculated
from maps of previous surveys

BY W. A. FIERCE
SURVEYOR

Scale of Chains to one Inch
AVENUES 50 FEET WIDE
HIGHWAYS 25 FEET WIDE

Approved by
James M. Thompson
Owner of Thompson
Ranch

105 1/2 Acres



Map No. 126

Filed June 20th 1889, at 30 mins past 3 p.m.

at request of James M. Thompson and James
M. Thompson Executors

Henry Brown Co. Recorder

J. O. GREENWOOD