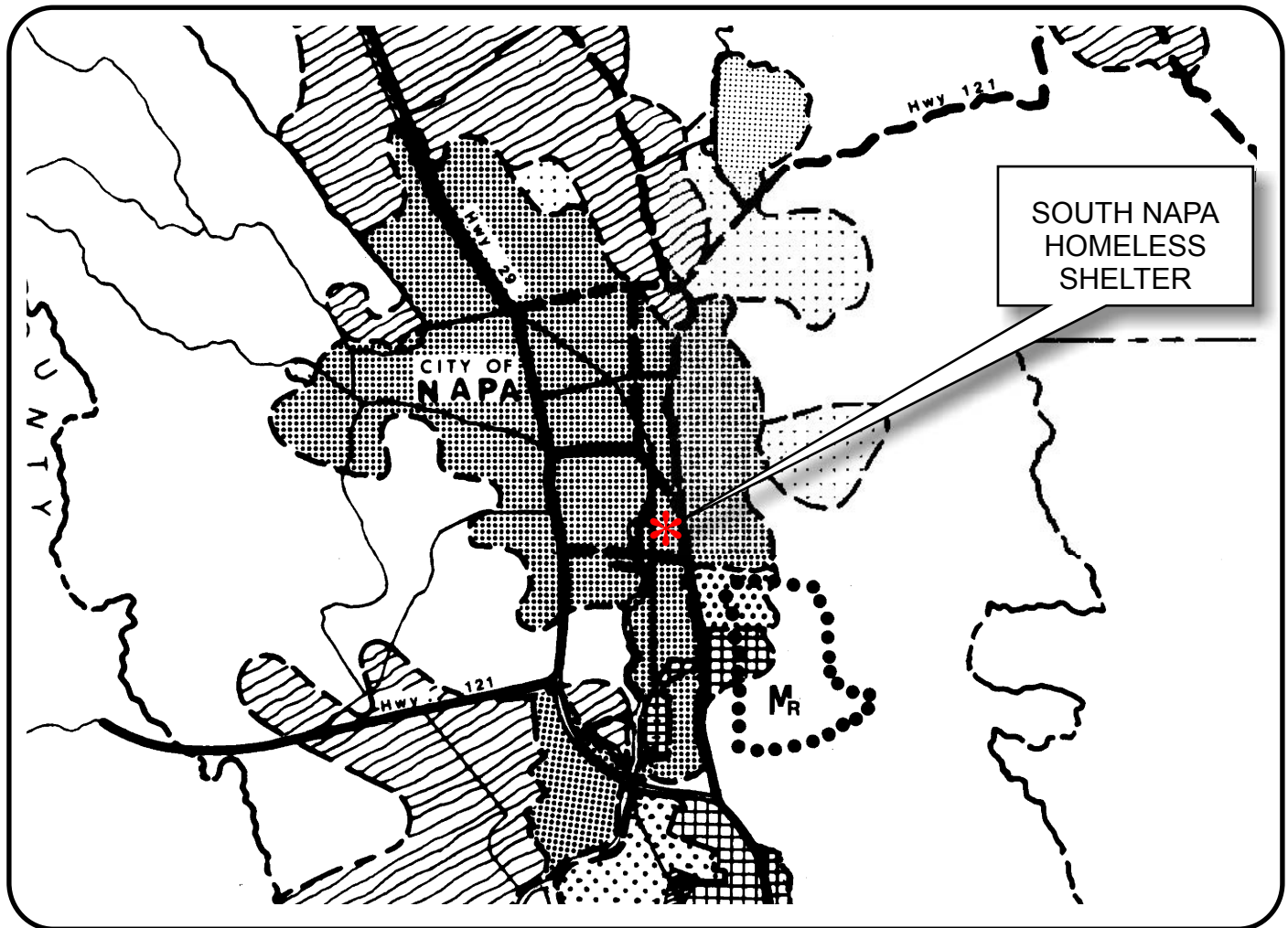


# NAPA COUNTY LAND USE PLAN 1998 - 2000



## LEGEND

### TRANSPORTATION

- LIMITED ACCESS HIGHWAY
- MAJOR ROAD
- SECONDARY ROAD
- RAILROAD
- AIRPORT
- LANDFILL SITE

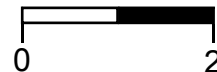
### OPEN SPACE

- AGRICULTURE, WATERSHED & OPEN SPACE
- AGRICULTURAL RESOURCE

### URBAN

- CITIES
- URBAN RESIDENTIAL
- RURAL RESIDENTIAL
- COMMERCIAL
- INDUSTRIAL
- PUBLIC - INSTITUTIONAL

SCALE IN MILES



APN  
046-691-001  
01-04-2005  
4C ENV



Map of Napa County showing parcels, wineries, and zoning. A yellow circle highlights a specific parcel. A callout box provides details: APN 046-691-001, 1.0Ac.(ptn). The map includes labels for 'Napa', 'Imola', 'Sewage Disposal', 'Maxwell Bridge', 'Oil Tanks', 'Juarez Old Adobe', and 'PD'. A legend defines symbols for parcels, wineries (producing, approved, pending), and zoning. A scale bar and north arrow are also present.

**Legend**

- Parcels
- Wineries in Vicinity
  - Producing
  - Approved
  - Pending
- Zoning

Scale: 0 to 3,200 Feet

01-04-2005 4C ENV

Napa County Conservation Development and Planning Department

S\_Nap\_Shelter\_env1.cdr



# PROPOSED HOMELESS SHELTER v.

EXISTING  
FIRE STATION



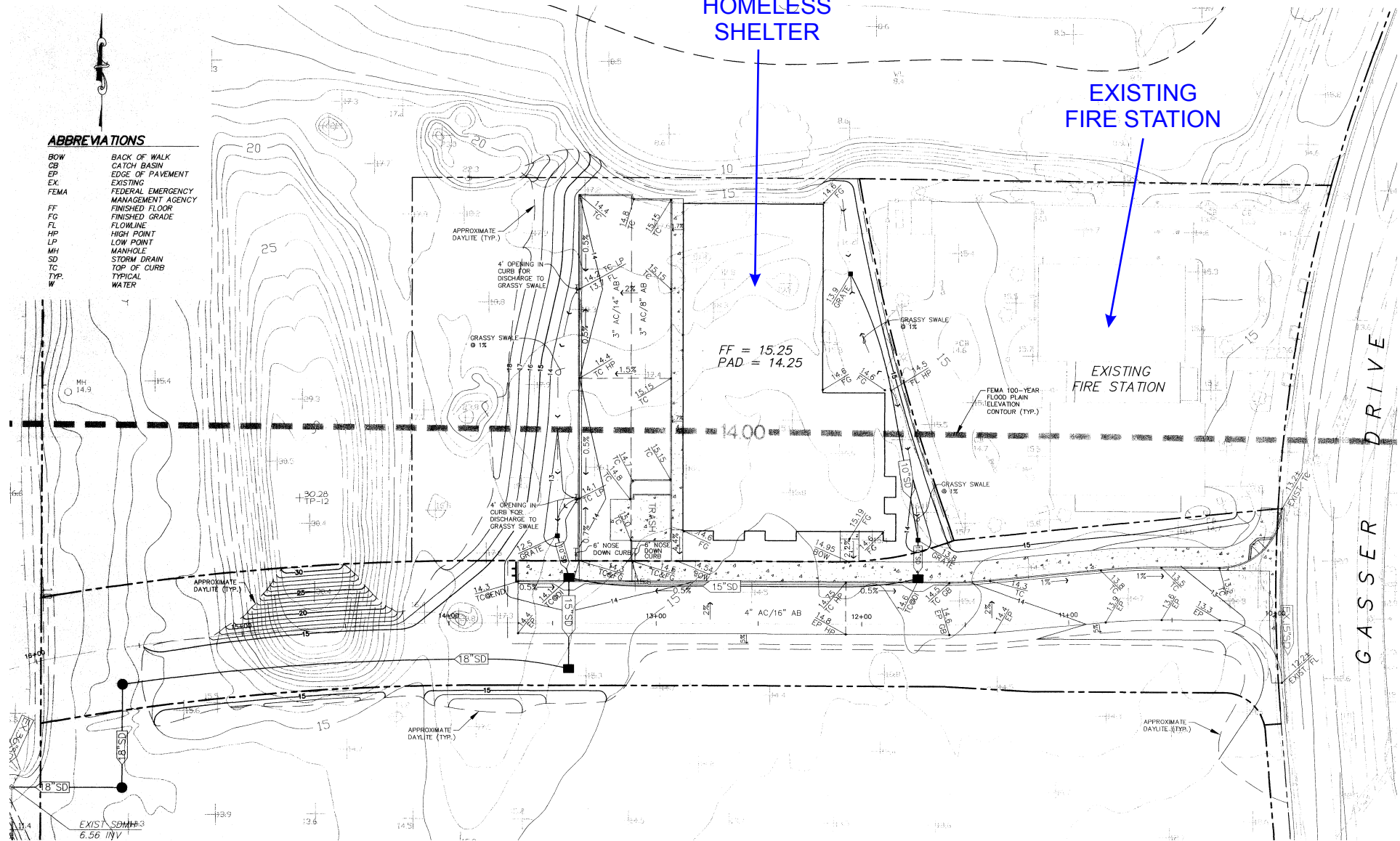
# SOUTH NAPA HOMELESS SHELTER

PROPOSED  
HOMELESS  
SHELTER

EXISTING  
FIRE STATION

## ABBREVIATIONS

BOW	BACK OF WALK
CB	CATCH BASIN
EP	EDGE OF PAVEMENT
EX.	EXISTING
FEMA	FEDERAL EMERGENCY MANAGEMENT AGENCY
FF	FINISHED FLOOR
FG	FINISHED GRADE
FL	FLOWLINE
HP	HIGH POINT
LP	LOW POINT
MH	MANHOLE
SD	STORM DRAIN
TC	TOP OF CURB
TYP.	TYPICAL
W	WATER



GRADING PLAN

**1 FLOOR PLAN**  
13,022 SQ. FT.  
SCALE 1/8" = 1'-0"

**WALL SYMBOLS**

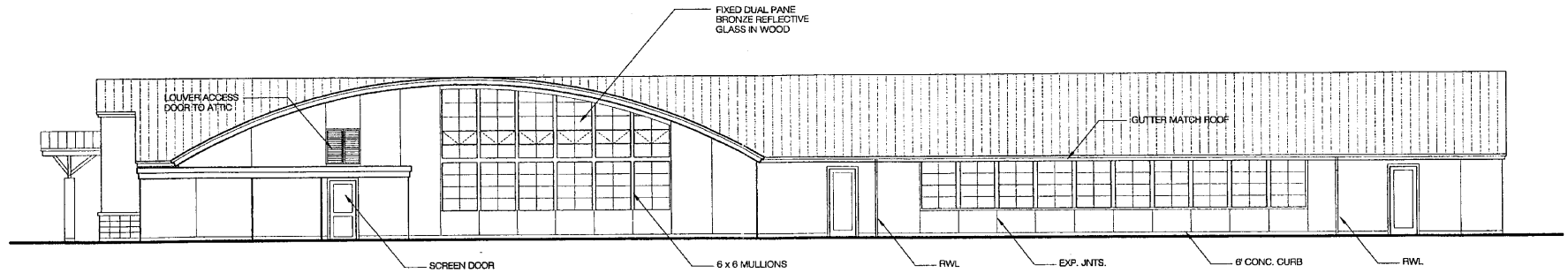
- FUTURE PARTITION NOT IN CONTRACT
- PARTITIONS +8'-0"
- == FULL HEIGHT WALLS

01-04-2005 4C ENV

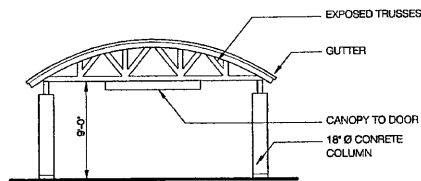
Napa County Conservation  
Development and Planning Department

S\_Nap\_Shelter\_env1.cdr

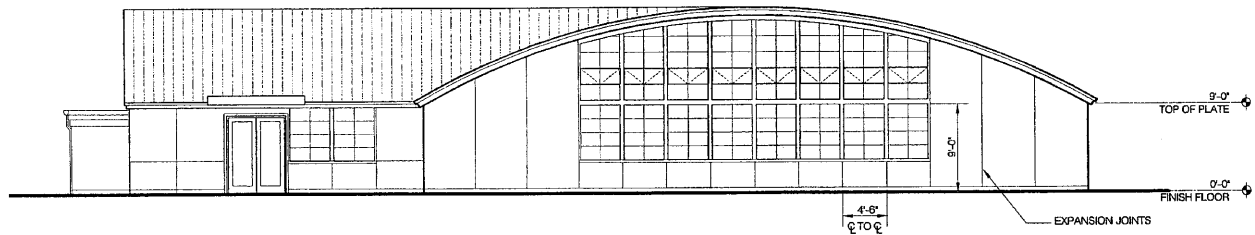
# SOUTH NAPA HOMELESS SHELTER



**4 EAST ELEVATION**  
SCALE 1/8" = 1'-0"



NORTH / SOUTH

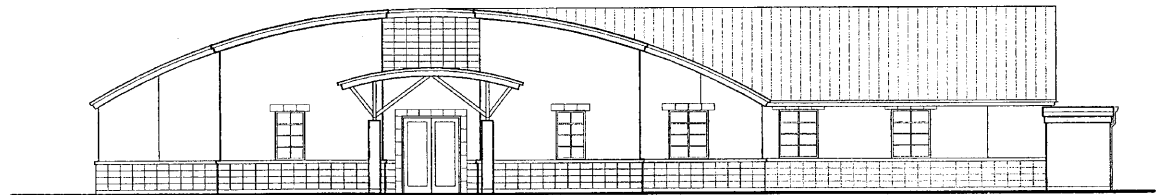


**3 NORTH ELEVATION**  
SCALE 1/8" = 1'-0"



EAST / WEST

**4 COVERED PATIO ELEVATION**  
SCALE 1/8" = 1'-0"



**2 SOUTH ELEVATION**  
SCALE 1/8" = 1'-0"

