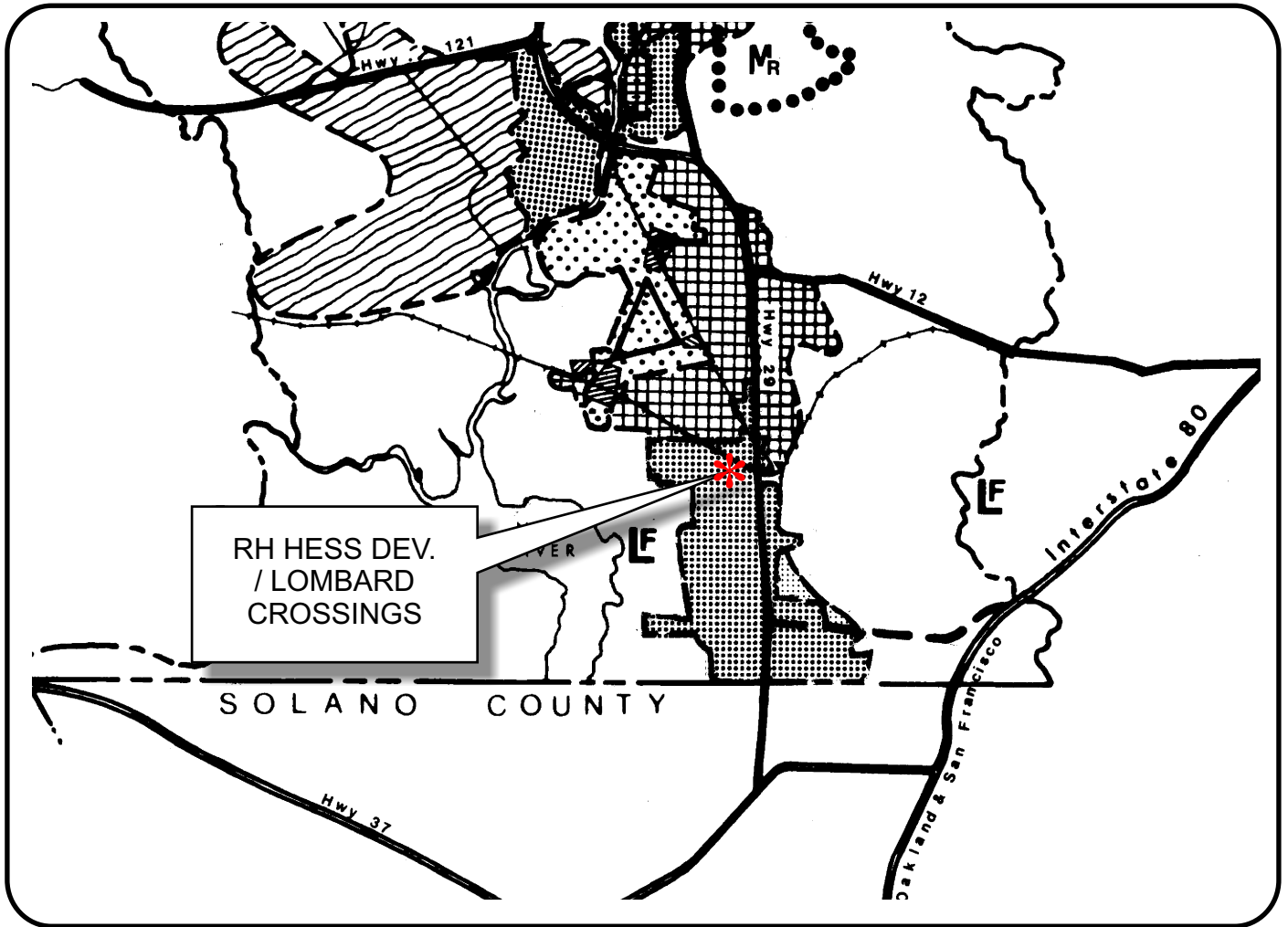


# NAPA COUNTY LAND USE PLAN 1998 - 2000



## LEGEND

### TRANSPORTATION

- LIMITED ACCESS HIGHWAY
- MAJOR ROAD
- SECONDARY ROAD
- RAILROAD
- AIRPORT
- LANDFILL SITE

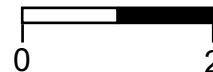
### OPEN SPACE

- AGRICULTURE, WATERSHED & OPEN SPACE
- AGRICULTURAL RESOURCE

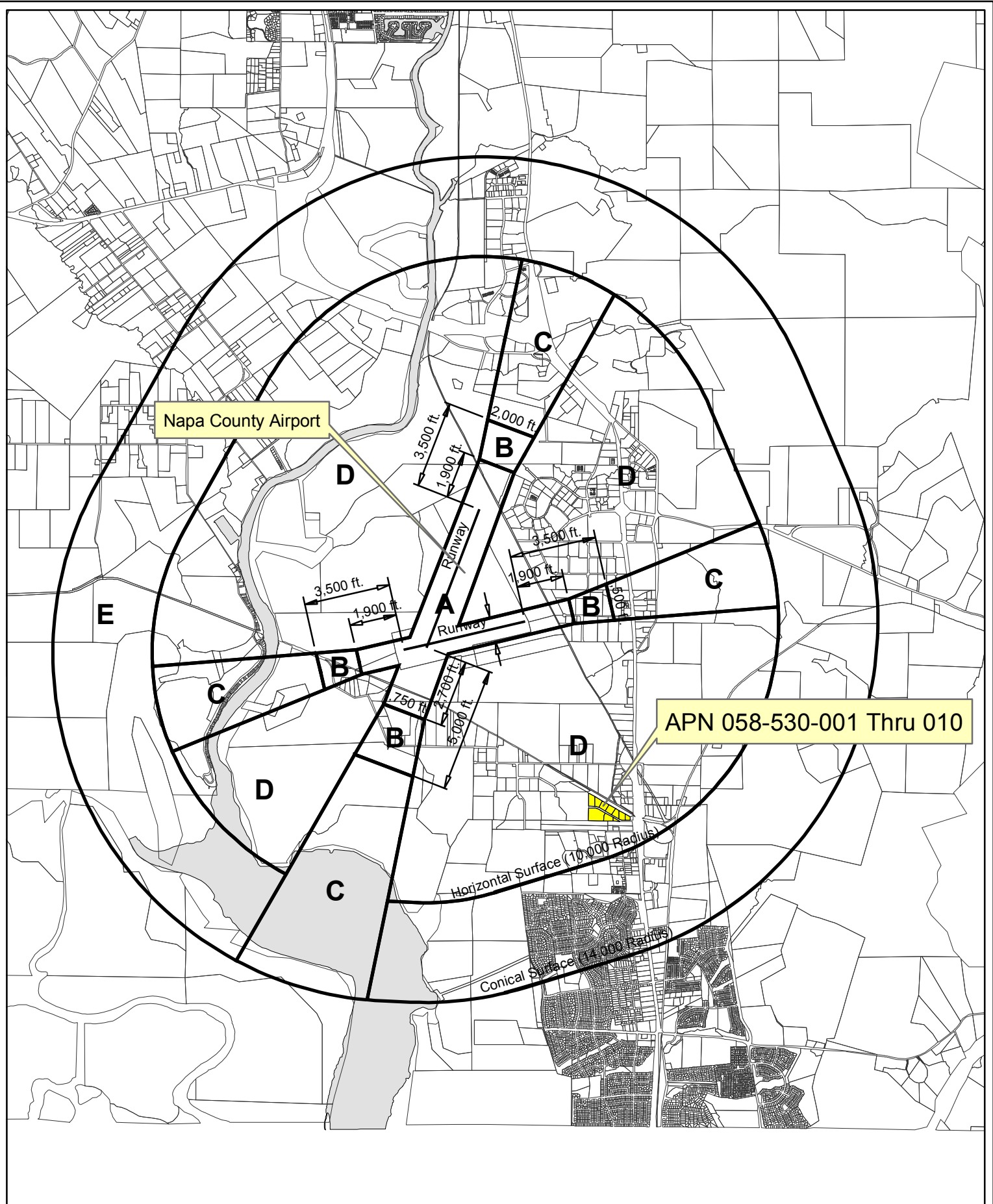
### URBAN

- CITIES
- URBAN RESIDENTIAL
- RURAL RESIDENTIAL
- COMMERCIAL
- INDUSTRIAL
- PUBLIC - INSTITUTIONAL

SCALE IN MILES



APN  
058-530-001  
thru 010  
04-29-2008  
2C ALUC

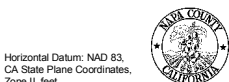


Napa County Airport

APN 058-530-001 Thru 010

# Compatibility Plan

## Napa County Airport



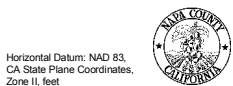
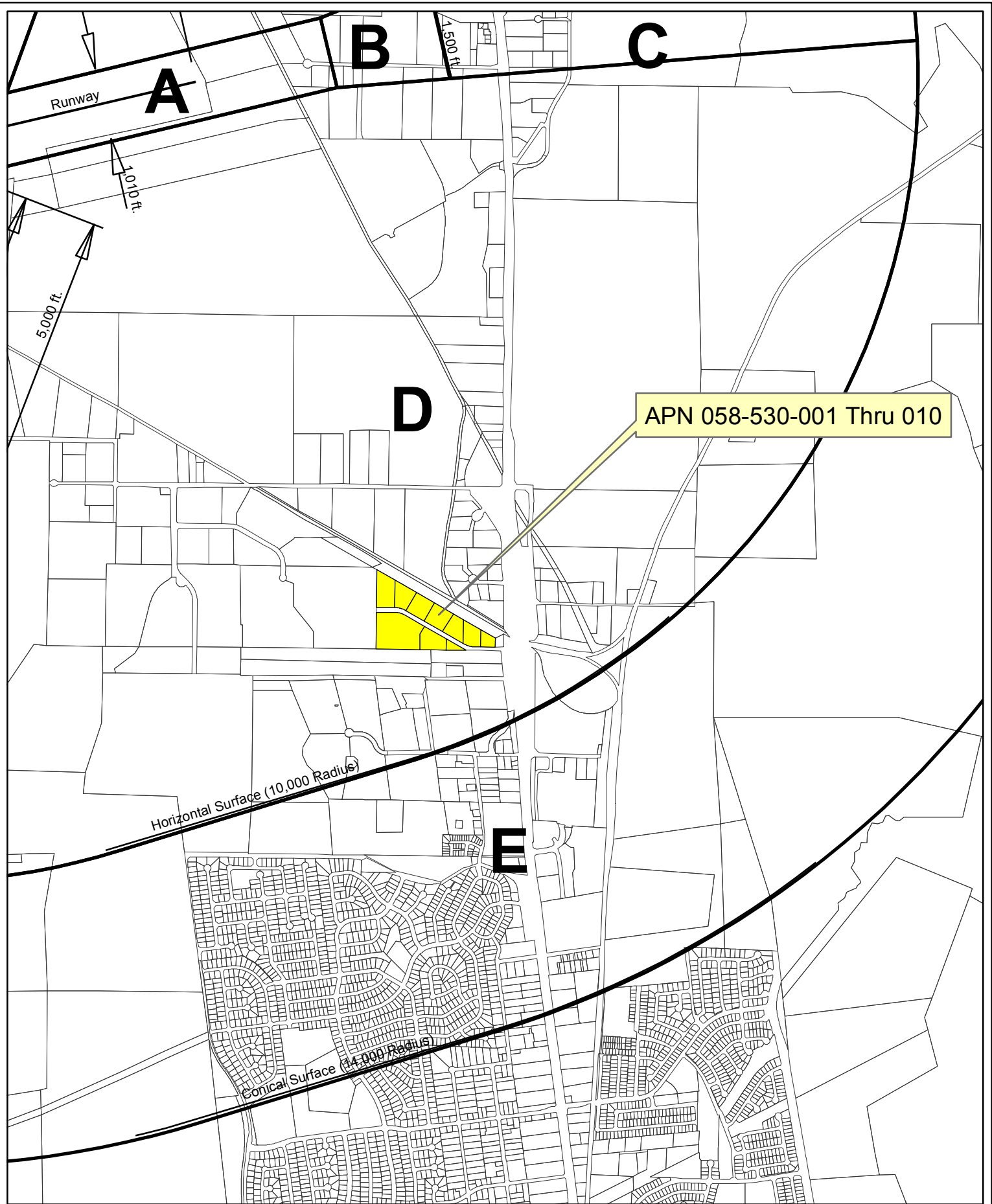
Horizontal Datum: NAD 83,  
CA State Plane Coordinates,  
Zone II, feet

Disclaimer: This map was prepared for informational purposes only. No liability is assumed for the accuracy of the data delineated hereon.



0 1,300 2,600 5,200'

Napa County Conservation Division - 01/2008



Horizontal Datum: NAD 83,  
CA State Plane Coordinates,  
Zone II, feet

Disclaimer: This map was prepared for informational purposes only. No liability is assumed for the accuracy of the data delineated hereon.

# Compatibility Plan

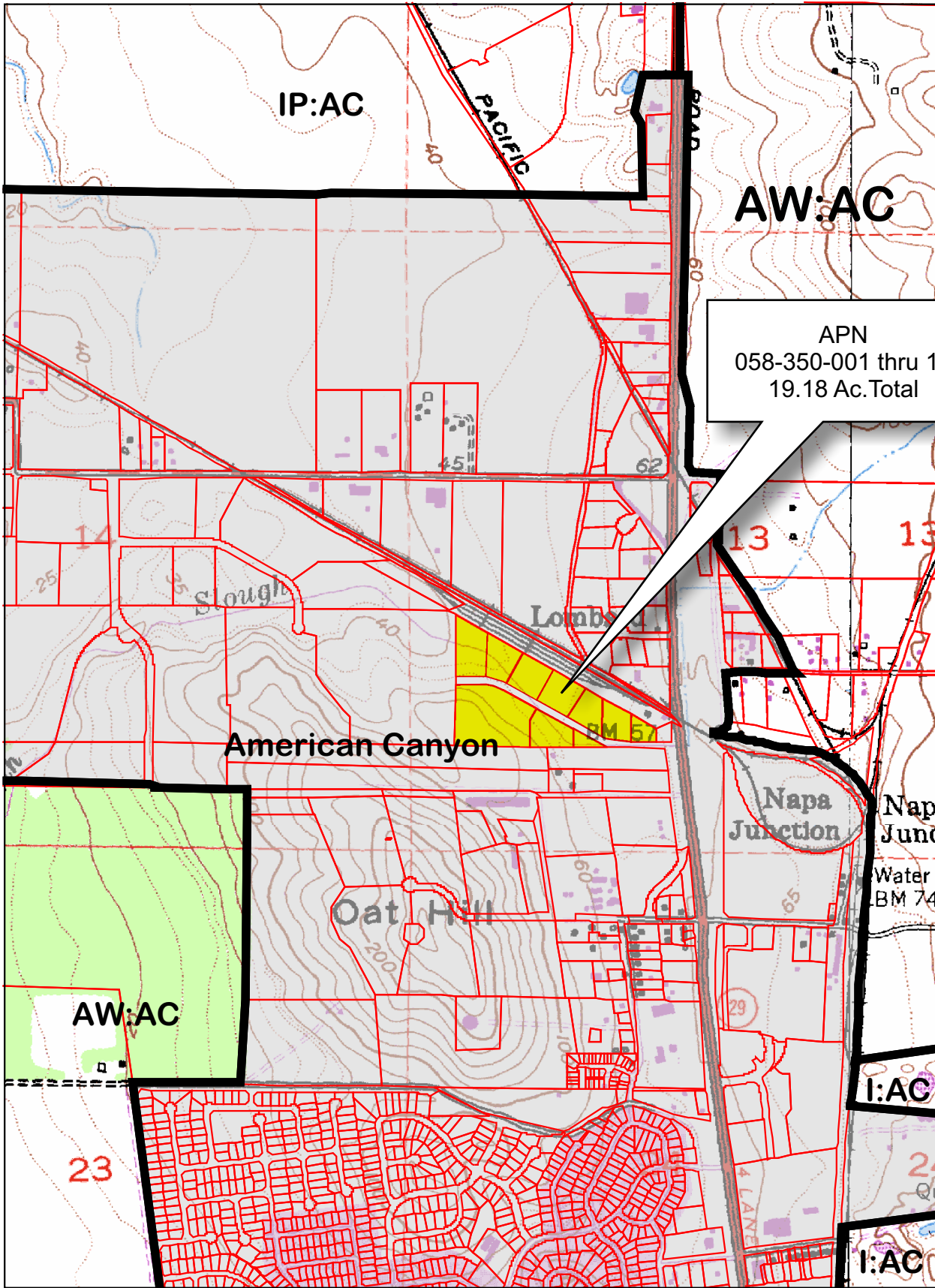
## Napa County Airport



0 455 910 1,820'

Napa County Conservation Division - 01/2008

# RH HESS DEV. / LOMBARD CROSSINGS



APN  
058-350-001 thru 10  
19.18 Ac. Total



- Legend**
- Zoning
  - Parcels

0 600 1,200 2,400 3,600 4,800 Feet