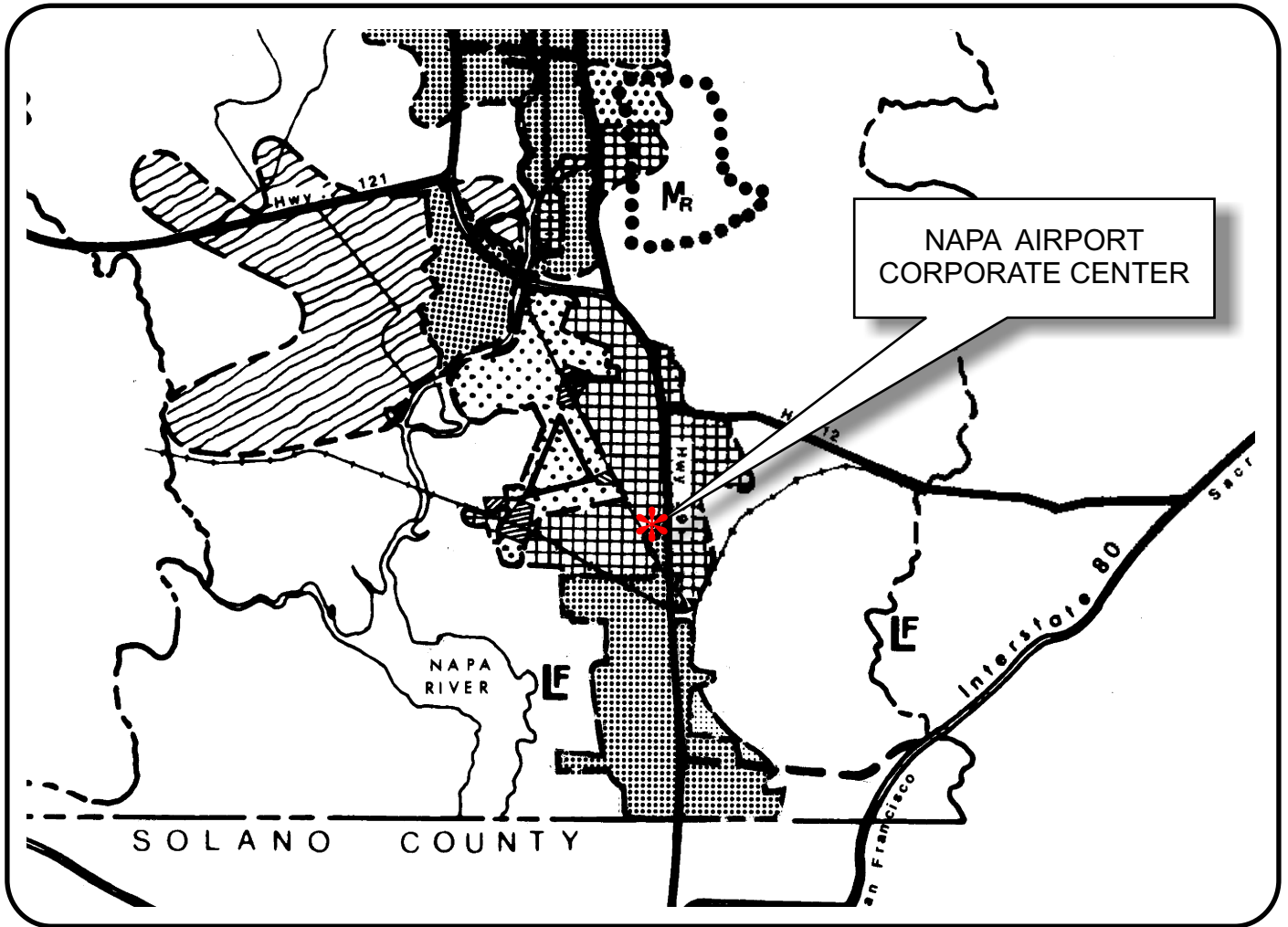


NAPA COUNTY LAND USE PLAN 1998 - 2000



LEGEND

TRANSPORTATION

- LIMITED ACCESS HIGHWAY
- MAJOR ROAD
- SECONDARY ROAD
- RAILROAD
- AIRPORT
- LANDFILL SITE

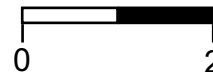
OPEN SPACE

- AGRICULTURE, WATERSHED & OPEN SPACE
- AGRICULTURAL RESOURCE

URBAN

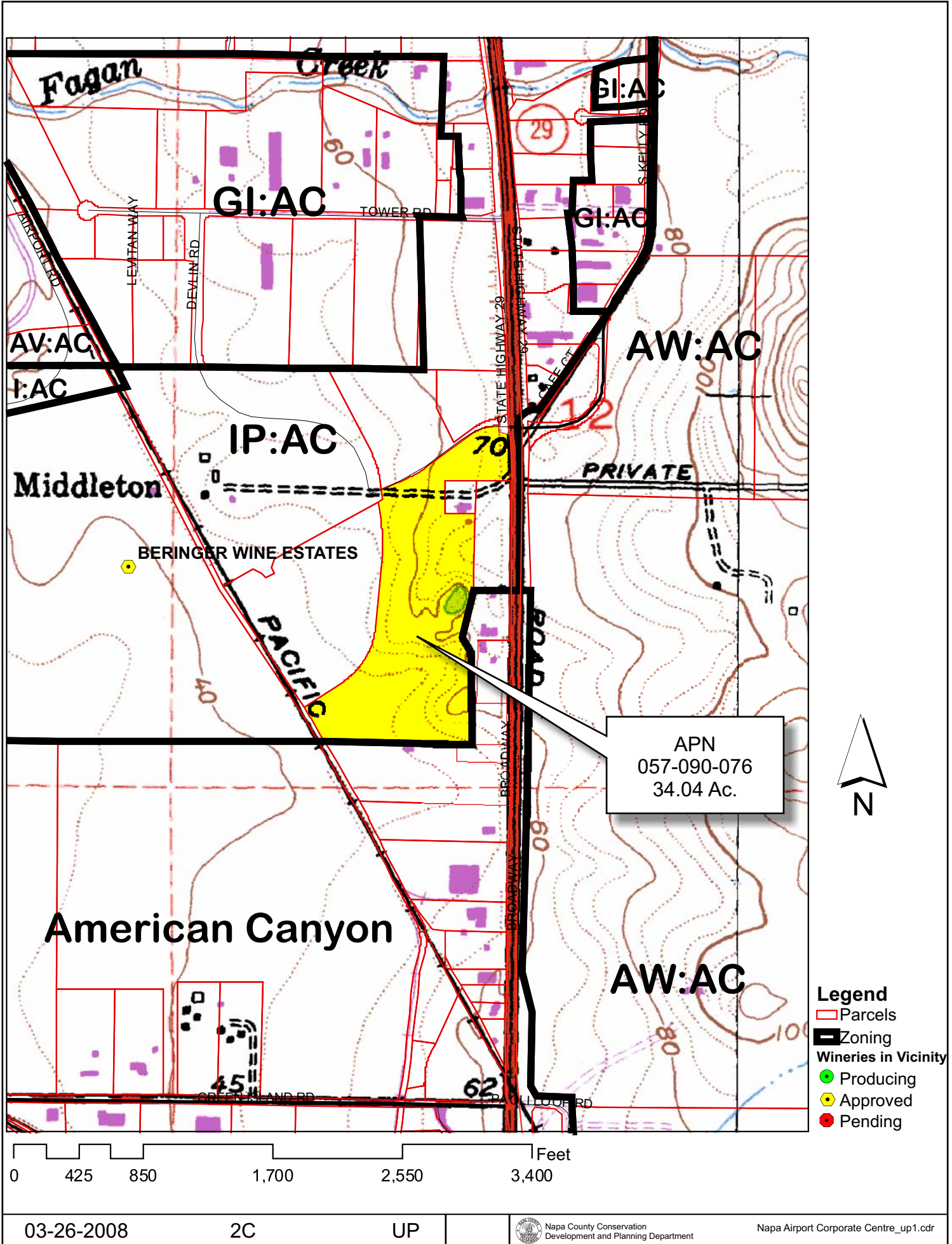
- CITIES
- URBAN RESIDENTIAL
- RURAL RESIDENTIAL
- COMMERCIAL
- INDUSTRIAL
- PUBLIC - INSTITUTIONAL

SCALE IN MILES

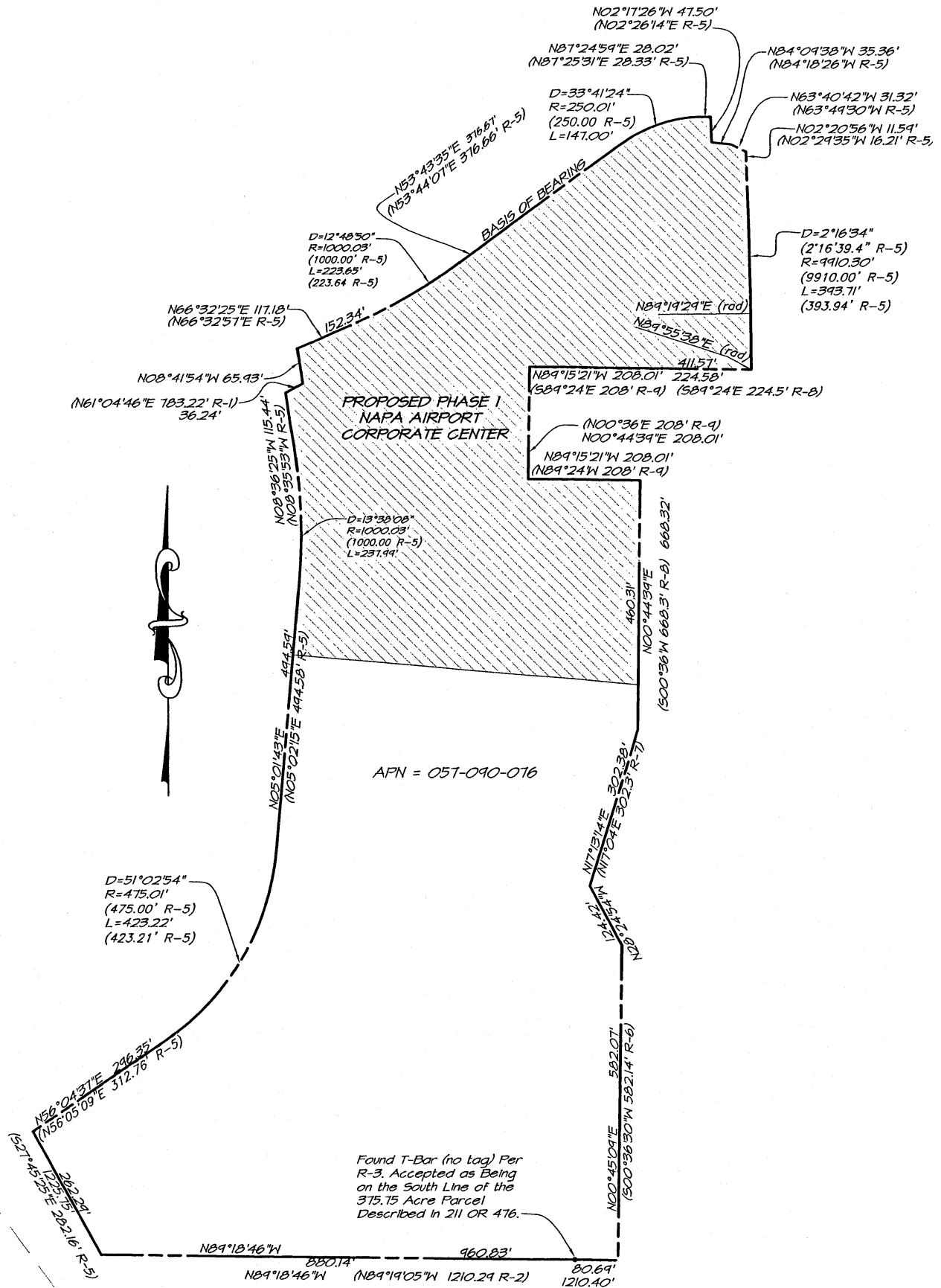


APN
057-090-076
03-26-2008
2C UP

NAPA AIRPORT CORPORATE CENTER



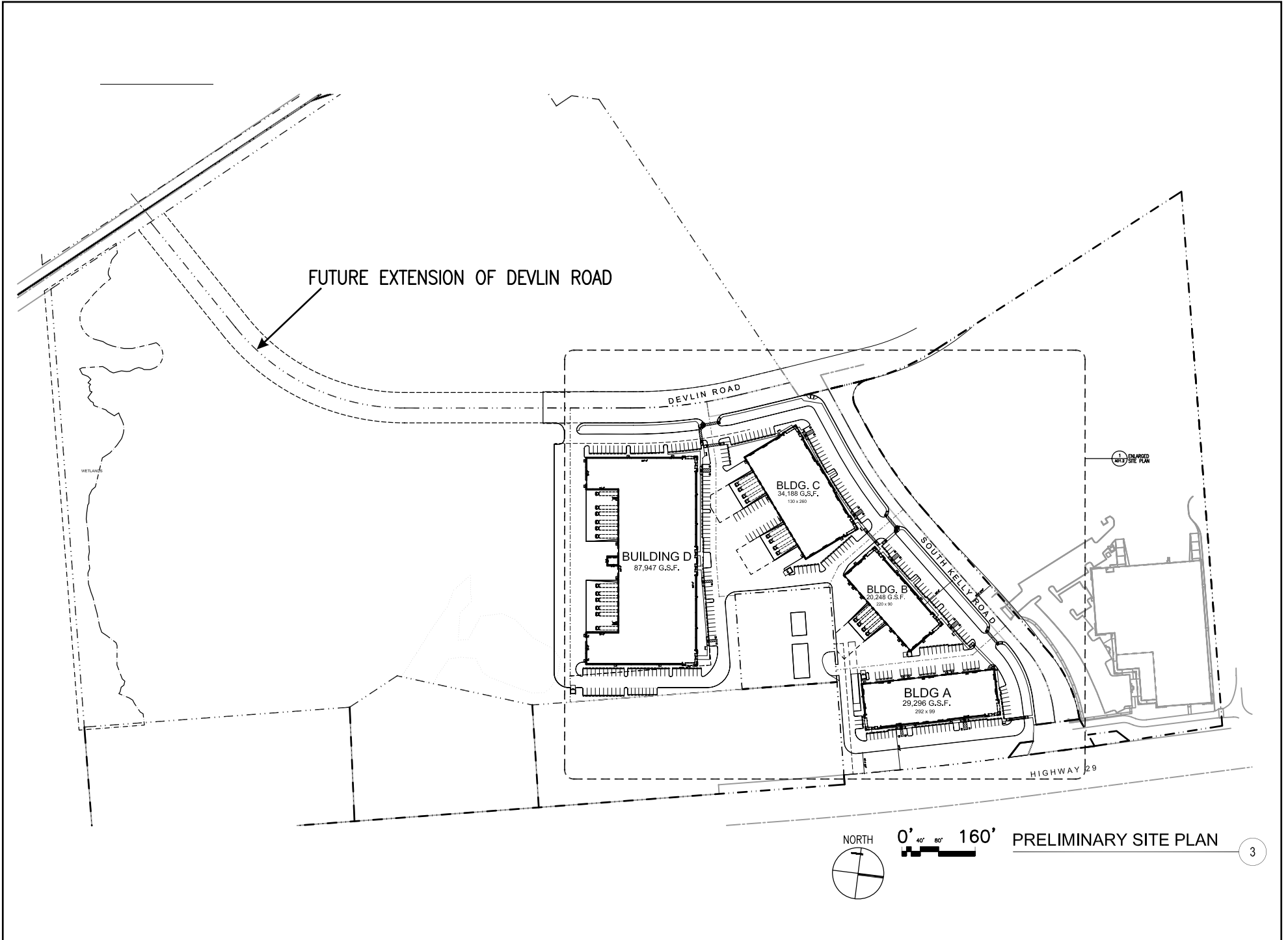
NAPA AIRPORT CORPORATE CENTER



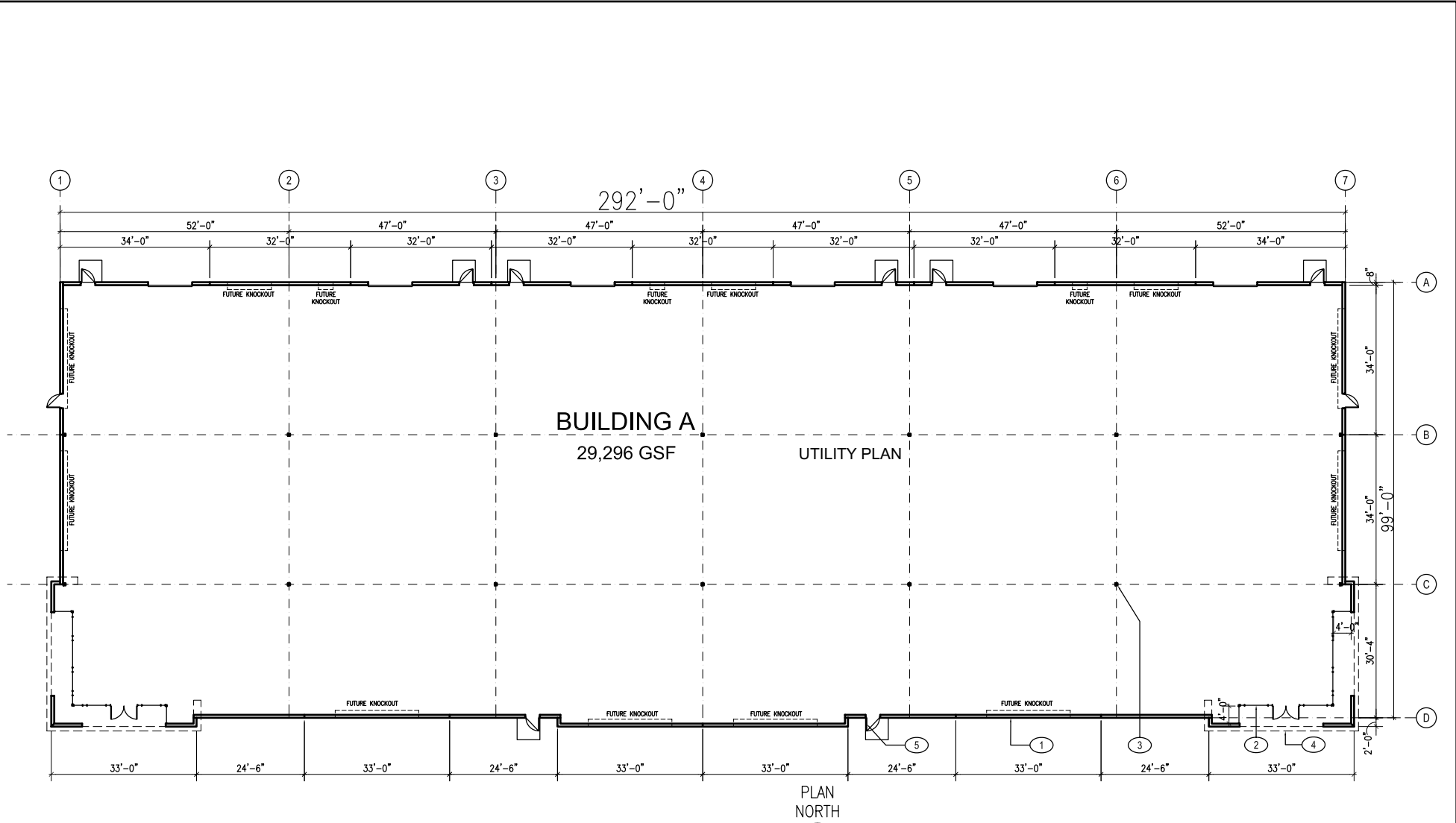
PARCEL BOUNDARY
NO SCALE



NAPA AIRPORT CORPORATE CENTER

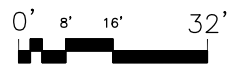


NAPA AIRPORT CORPORATE CENTER

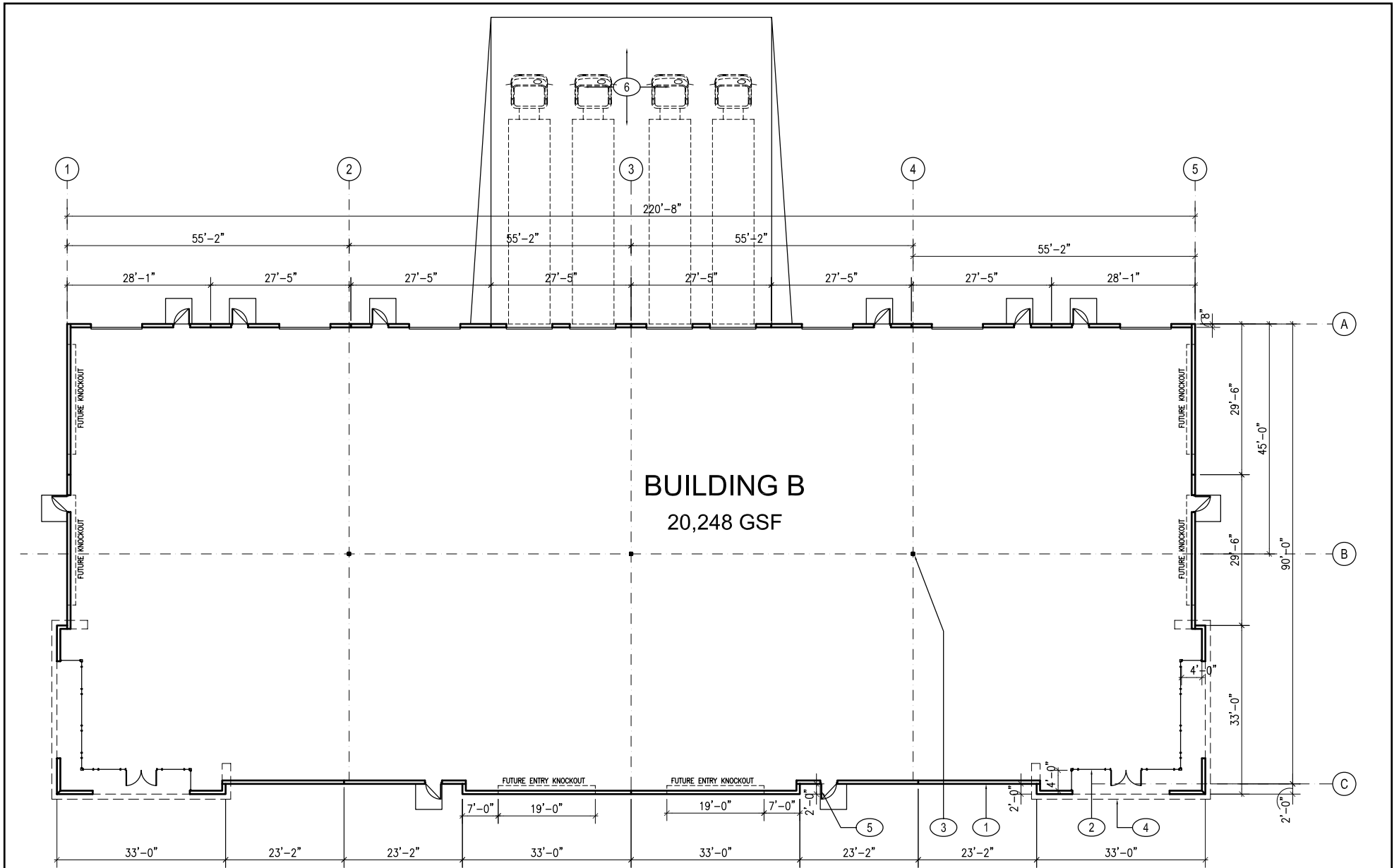


- ① EXTERIOR WALLS CONSIST OF SITE CAST TILT-UP CONCRETE PANELS WITH REVEALS, E.I.F.S. ACCENT PROFILES, REVEALS, AND A MULTICOLORED ELASTOMERIC, TEXTURED PAINT.
- ② TYPICAL WINDOW SYSTEM CONSISTS OF ALUMINUM EXTRUDED MULLIONS WITH A DUAL PANE GLAZING SYSTEM.
- ③ TYPICAL STRUCTURAL STEEL COLUMNS.
- ④ DASHED LINE OF CORNICE ELEMENT ABOVE.
- ⑤ 3'-0" x 7'-0" STEEL MAN DOOR, TYPICAL.

BUILDING A PRELIMINARY FLOOR PLAN ①



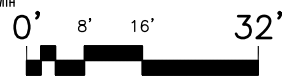
NAPA AIRPORT CORPORATE CENTER



BUILDING B
20,248 GSF

KEYNOTES:

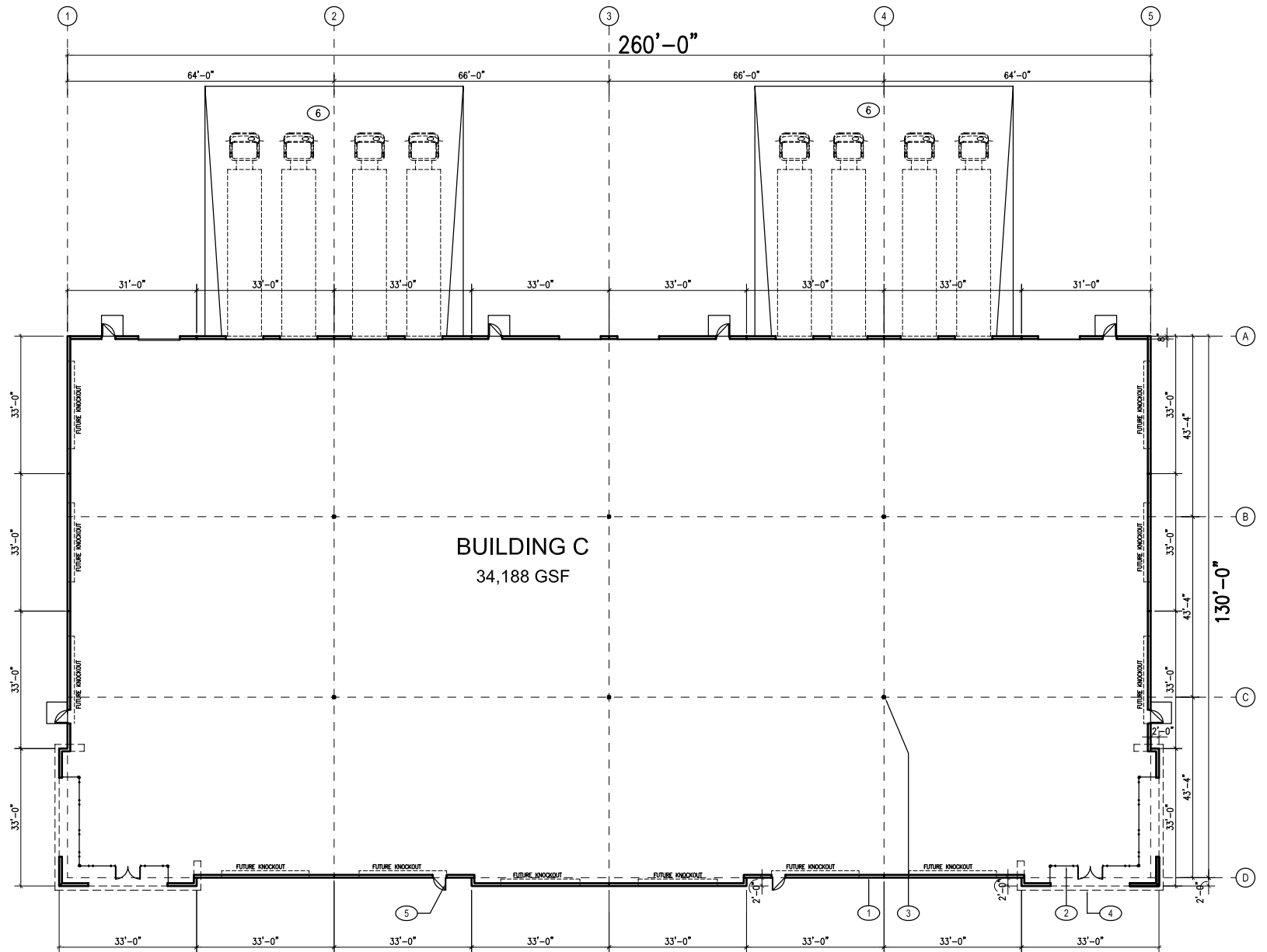
- ① EXTERIOR WALLS CONSIST OF SITE CAST TILT-UP CONCRETE PANELS WITH REVEALS, E.J.F.S. ACCENT PROFILES, REVEALS, AND A MULTICOLORED ELASTOMERIC, TEXTURED PAINT.
- ② TYPICAL WINDOW SYSTEM CONSISTS OF ALUMINUM EXTRUDED MULLIONS WITH A DUAL PANE GLAZING SYSTEM.
- ③ TYPICAL STRUCTURAL STEEL COLUMNS.
- ④ DASHED LINE OF CORNICE ELEMENT ABOVE.
- ⑤ 3'-0" x 7'-0" STEEL MAN DOOR, TYPICAL.
- ⑥ DEPRESSED TRUCK DOCK



BUILDING B PRELIMINARY FLOOR PLAN

1

NAPA AIRPORT CORPORATE CENTER



KEYNOTES:

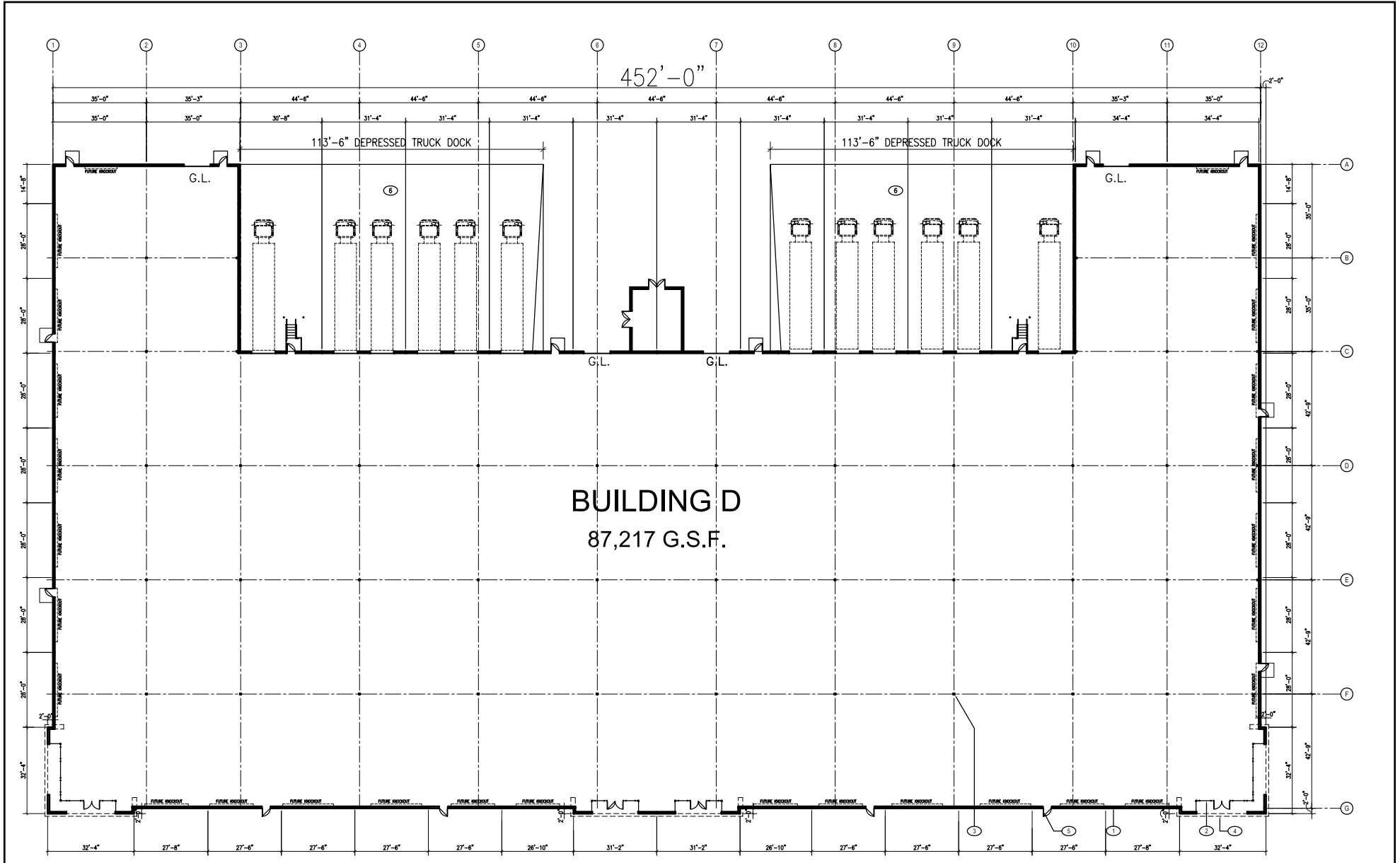
- ① EXTERIOR WALLS CONSIST OF SITE CAST TILT-UP CONCRETE PANELS WITH REVEALS, E.I.F.S. ACCENT PROFILES, REVEALS, AND A MULTICOLORED ELASTOMERIC, TEXTURED PAINT.
- ② TYPICAL WINDOW SYSTEM CONSISTS OF ALUMINUM EXTRUDED MULLIONS WITH A DUAL PANE GLAZING SYSTEM.
- ③ TYPICAL STRUCTURAL STEEL COLUMNS.
- ④ DASHED LINE OF CORNICE ELEMENT ABOVE.
- ⑤ 3'-0" x 7'-0" STEEL MAN DOOR, TYPICAL.
- ⑥ DEPRESSED TRUCK DOCK



BUILDING C PRELIMINARY FLOOR PLAN

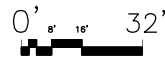
1

NAPA AIRPORT CORPORATE CENTER



KEYNOTES:

- ① EXTERIOR WALLS CONSIST OF SITE CAST TILT-UP CONCRETE PANELS WITH REVEALS, E.I.F.S. ACCENT PROFILES, REVEALS, AND A MULTICOLORED ELASTOMERIC, TEXTURED PAINT.
- ② TYPICAL WINDOW SYSTEM CONSISTS OF ALUMINUM EXTRUDED MULLIONS WITH A DUAL PANE GLAZING SYSTEM.
- ③ TYPICAL STRUCTURAL STEEL COLUMNS.
- ④ DASHED LINE OF CORNICE ELEMENT ABOVE.
- ⑤ 3'-0" x 7'-0" STEEL MAN DOOR, TYPICAL.
- ⑥ DEPRESSED TRUCK DOCK



BUILDING D PRELIMINARY FLOOR PLAN

NAPA AIRPORT CORPORATE CENTER



BUILDING A: EAST ELEVATION



BUILDING B: NORTH ELEVATION



BUILDING C: NORTH ELEVATION



BUILDING D: NORTH ELEVATION

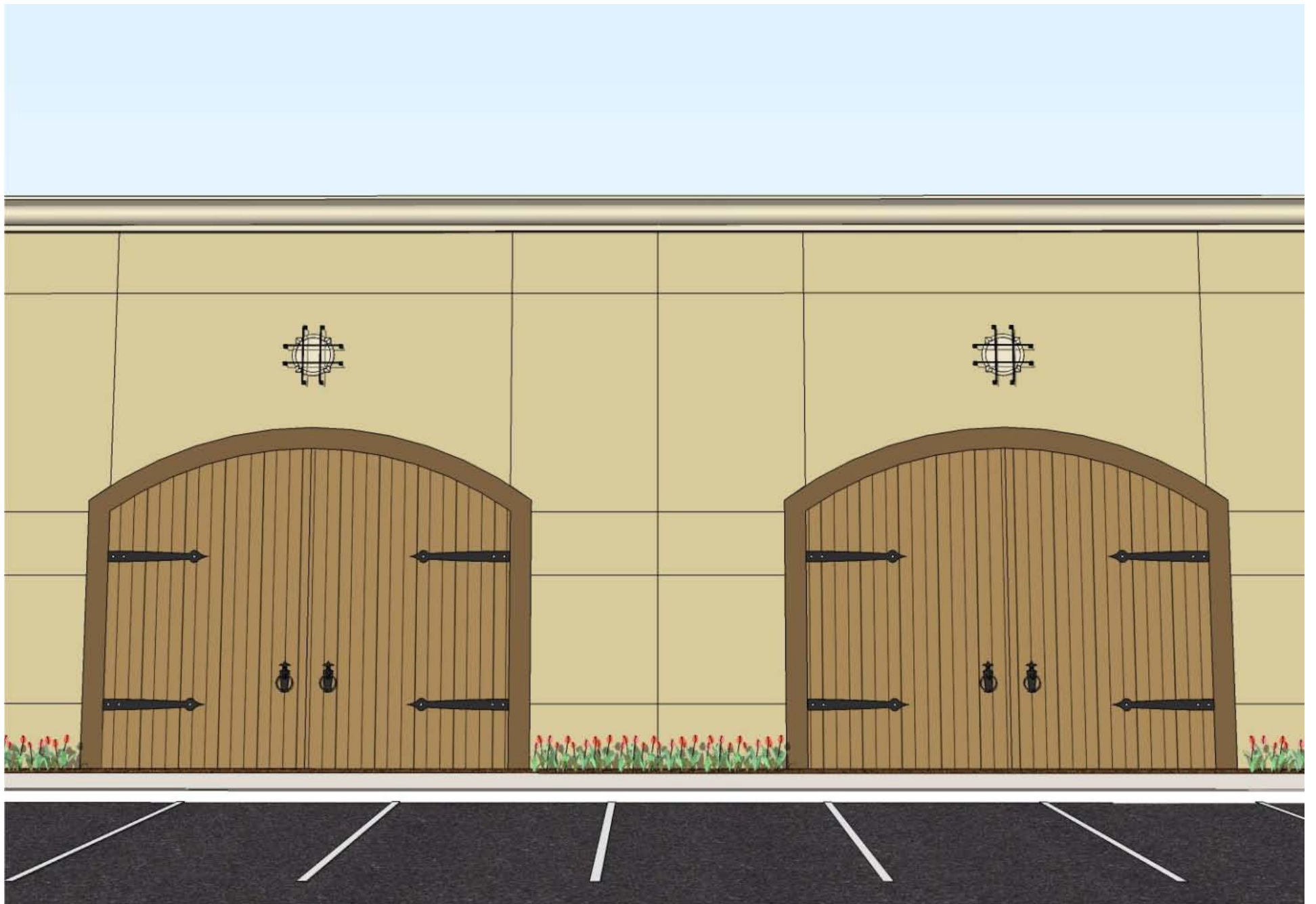
NAPA AIRPORT CORPORATE CENTER



NAPA AIRPORT CORPORATE CENTER



NAPA AIRPORT CORPORATE CENTER



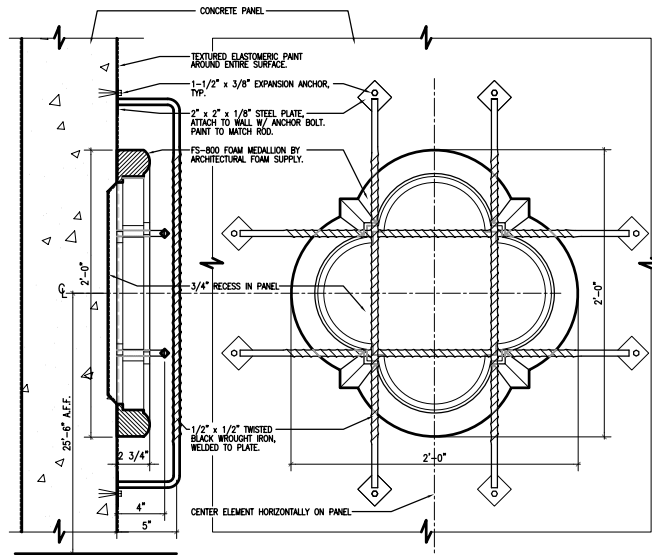
NAPA AIRPORT CORPORATE CENTER



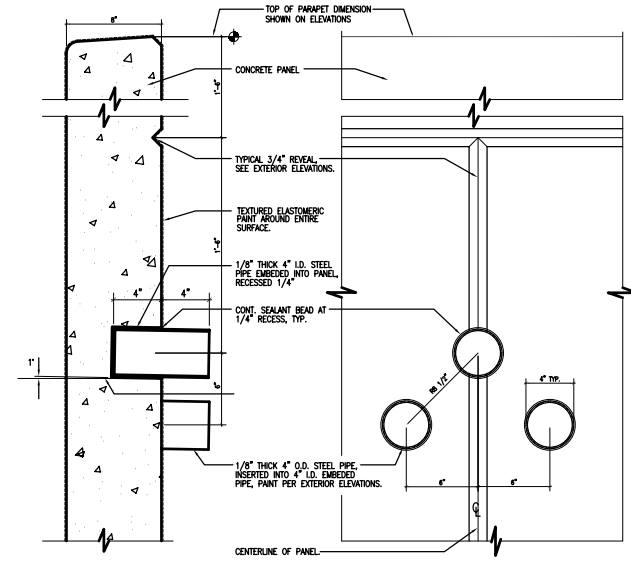
NAPA AIRPORT CORPORATE CENTER



NAPA AIRPORT CORPORATE CENTER

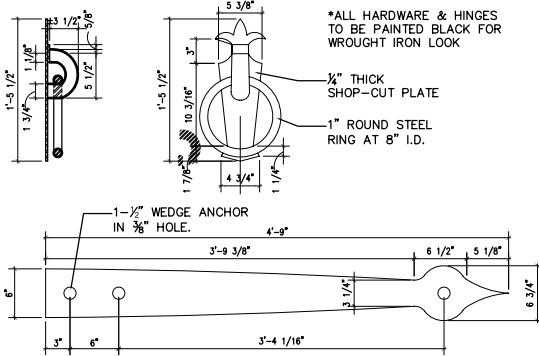


A: SECTION
B: ELEVATION
DECOR ELEMENT



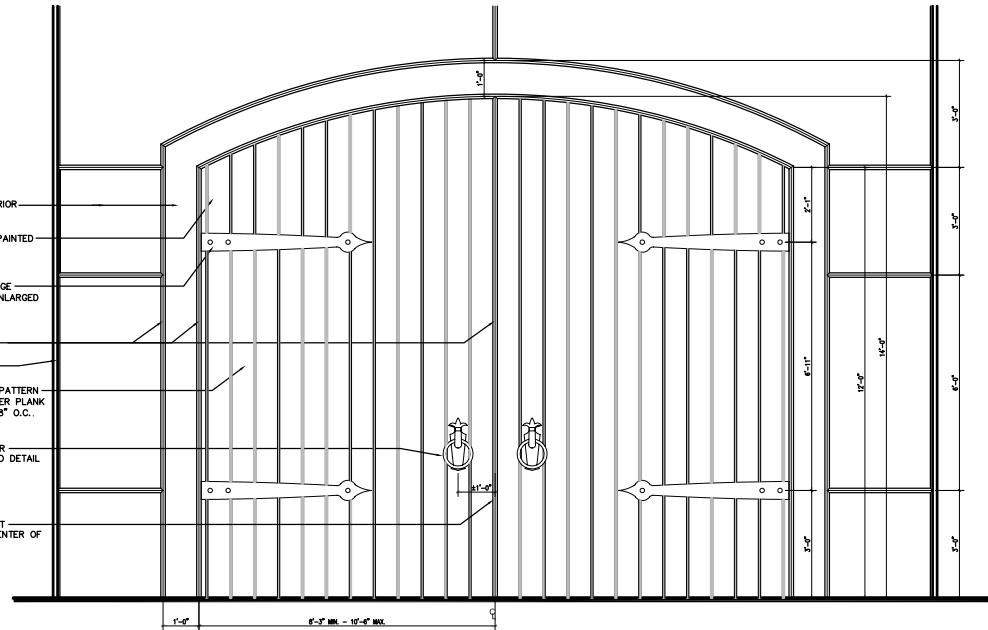
A: SECTION
B: ELEVATION
FALSE DRAIN

DETAILS



DOOR STAP AND KNOCKER

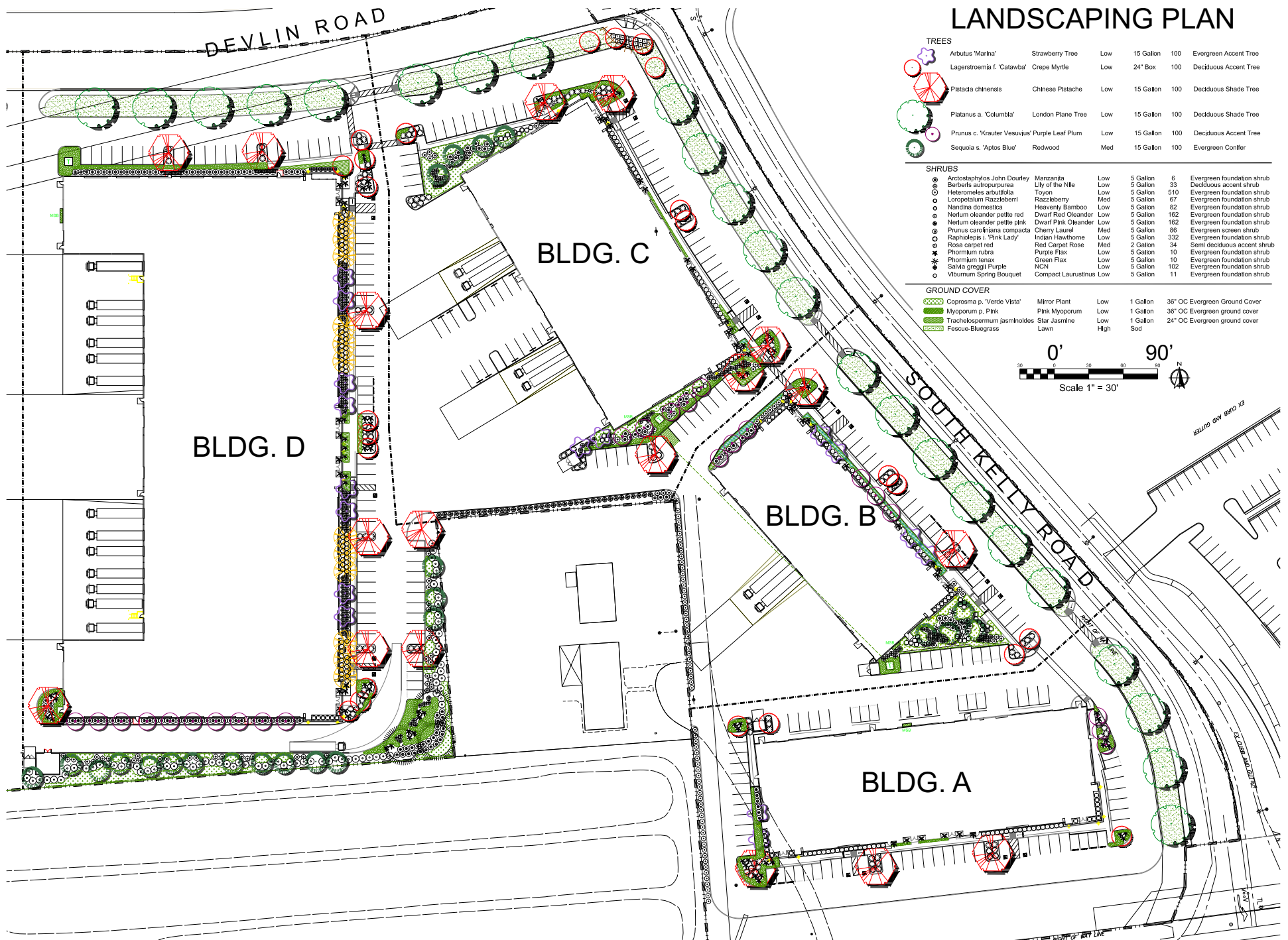
- CONCRETE PANEL EXTERIOR FACE OF WALL, $\pm 0.0'$
- DOOR AREA RECESSED PAINTED PER FINISH SCHEDULE
- FORGED IRON FALSE HINGE STRAP $\frac{1}{2}$ " THICK, SEE ENLARGED DETAIL FOR DIMENSIONS.
- $\frac{1}{2}$ " REVEAL, TYP.
- PANEL JOINT
- FITZGERALD FORMLINER PATTERN NO. 16927 7- $\frac{1}{2}$ " WEATHER PLANK W/ $\frac{3}{8}$ " DEEP GROOVE @ 8" O.C., TYP.
- LARGE BLACK IRON DOOR KNOCKER, SEE ENLARGED DETAIL FOR DIMENSIONS.
- CENTER FORMLINER JOINT BETWEEN PLANKS ON CENTER OF REVEAL AS SHOWN.



DOOR FORMLINER

NAPA AIRPORT CORPORATE CENTER

LANDSCAPING PLAN



TREES

	Arbutus 'Marina'	Strawberry Tree	Low	15 Gallon	100	Evergreen Accent Tree
	Lagerstroemia f. 'Catawba'	Crepe Myrtle	Low	24" Box	100	Deciduous Accent Tree
	Pistada chinensis	Chinese Pistache	Low	15 Gallon	100	Deciduous Shade Tree
	Platanus a. 'Columbia'	London Plane Tree	Low	15 Gallon	100	Deciduous Shade Tree
	Prunus c. 'Krauter Vesuvius'	Purple Leaf Plum	Low	15 Gallon	100	Deciduous Accent Tree
	Sequoia s. 'Aptos Blue'	Rodwood	Med	15 Gallon	100	Evergreen Conifer

SHRUBS

	Arctostaphylos John Dourley	Manzanita	Low	5 Gallon	6	Evergreen foundation shrub
	Berberis autropurea	Lily of the Nile	Low	5 Gallon	33	Deciduous accent shrub
	Heteromeles arbutifolia	Toyon	Low	5 Gallon	510	Evergreen foundation shrub
	Loropetalum Razzeleberi	Razzeleberi	Med	5 Gallon	67	Evergreen foundation shrub
	Nandina domestica	Heavenly Bamboo	Low	5 Gallon	62	Evergreen foundation shrub
	Nerium oleander petite red	Dwarf Red Oleander	Low	5 Gallon	162	Evergreen foundation shrub
	Nerium oleander petite pink	Dwarf Pink Oleander	Low	5 Gallon	162	Evergreen foundation shrub
	Prunus caroliniana compacta	Cherry Laurel	Med	5 Gallon	88	Evergreen screen shrub
	Raphiolepis l. 'Pink Lady'	Indian Hawthorne	Low	5 Gallon	332	Evergreen foundation shrub
	Rosa carpet red	Red Carpet Rose	Med	2 Gallon	34	Semi deciduous accent shrub
	Phoridium rubra	Purple Flax	Low	5 Gallon	10	Evergreen foundation shrub
	Phormium tenax	Green Flax	Low	5 Gallon	10	Evergreen foundation shrub
	Salvia greggii Purple	NCN	Low	5 Gallon	102	Evergreen foundation shrub
	Viburnum Spring Bouquet	Compact Laurustinus	Low	5 Gallon	11	Evergreen foundation shrub

GROUND COVER

	Coprosma p. 'Verde Vista'	Mirror Plant	Low	1 Gallon	36' OC	Evergreen Ground Cover
	Myoporum p. Pink	Pink Myoporum	Low	1 Gallon	36' OC	Evergreen ground cover
	Trachelospermum jasminoides	Star Jasmine	Low	1 Gallon	24' OC	Evergreen ground cover
	Fescue-Bluegrass	Lawn	High	Sod		

