

Sustainable Groundwater Management Act and Groundwater Sustainability Plan for the Napa Valley Subbasin

Section 3: Water Resource and Land Use Monitoring and Management Programs

Reid Bryson

September 10, 2020



**Luhdorff &
Scalmanini**
Consulting Engineers



Napa Valley GSP Status Update



1. Important Cornerstones
2. GSP Development Process
3. GSP Draft Section 3
4. Looking Ahead

Important Cornerstones: SGMA and Sustainability Goal



SGMA requires the GSP to include a **Sustainability Goal** for the Napa Valley Subbasin to guide groundwater management in a manner that avoids undesirable results due to groundwater conditions.

***** Napa Sustainability Goal 2014 (GRAC) and Update in 2016*****

Napa Valley Subbasin SGMA Sustainability Goal: *To protect and enhance groundwater quantity and quality for all the people who live and work in Napa County, regardless of the source of their water supply. The County and everyone living and working in the county will integrate stewardship principles and measures in groundwater development, use, and management to protect economic, environmental, and social benefits and maintain groundwater sustainability indefinitely without causing undesirable results, including unacceptable economic, environmental, or social consequences.*

GSPAC to Refine Sustainability Goal as Needed
(this and related topics will be Discussed during Many GSPAC Meetings)

Napa Valley Subbasin GSP Roadmap



August 2020-August 2021

- Develop Draft Sections with Input from GSPAC; Receive Feedback; and Update Draft Sections
- Draft Sections Supported by Technical Memoranda and Other Appendices (Previously Published Reports)

September 2021-December 2021

- Full Draft GSP: Final GSPAC Review; Feedback on Draft; GSP Revisions



*Draft Section includes: TOC, Lists of Tables and Figures, Corresponding Appendices, **Section Objectives, and Summary**. Accompanied by DWR GSP Regulations Table (Elements Guide) with Section Cross References*

GSP Table of Contents



Section		Corresponding GSP Regulations
1	Introduction	§351 / §353.6 / §354.2 / §354.4 / §354.6 / §354.8
2	Plan Area	§354.8
3	Water Resource and Land Use Monitoring and Management Programs	§353.8 / §354.8 / §354.10
4	Basin Setting	§354.12 / §354.14
5	Monitoring Network and Program	§354.32 / §354.34 / §354.38
6	Groundwater and Surface water Conditions	§354.16
7	Historical, Current, and Projected Water Supplies	§354.16
8	Water Budget	§354.18
9	Napa Valley Subbasin Sustainability Goal	§354.20 / §354.22 / §354.24 / §354.26 / §354.28 / §354.30 §354.36 / §354.38
10	Monitoring Data Management and Reporting	§352.2 / §352.4 / §352.6 / §353.4 / §354.40 / §356.2 / §356.4
11	Sustainable Groundwater Management: Projects and Management Actions	§354.42 / §354.44
12	Plan Implementation	§353.2 / §355.4 / §356.4



Section 3 Describes existing water resources monitoring and management programs in the Subbasin

- Local, state, and federal agencies with **existing water and land use monitoring and management programs** in the Napa Valley Subbasin.
 - Provide general understanding of efforts underway by other agencies, which may influence groundwater conditions in the Subbasin.
- **Extent of recent and historical monitoring networks** in the Napa Valley Subbasin.
 - Context for subsequent GSP Section (Section 5) about the monitoring network that the GSA will use to track groundwater-related conditions for SGMA purposes, including GDE monitoring.
- **Beneficial uses and users of groundwater** in the Subbasin.
 - Descriptions precede additional details to be addressed in GSP Sections 6, 9, and 11, including identification of significant and unreasonable impacts on beneficial users.

Today's Discussion: Section 3



	Section	Corresponding GSP Regulations
3	<p>Water Resource and Land Use Monitoring and Management Programs</p> <p>3.1 Water Resources Monitoring and Management Programs</p> <p>3.2 Land Use Elements or Topic Categories of Applicable General Plans</p> <p>3.3 Additional GSP Elements</p> <p>3.4 Notice and Communication</p>	<p>CWC 10727.2 G; §354.8 c, d, e</p> <p>§354.8 a, f</p> <p>§354.8 e, g; CWC 10727.4</p> <p>§353.8, §354.10; CWC 10723.4</p>

Section 3.1: Water Resources Monitoring and Management Programs



3.1.1 Local Monitoring and Management Agencies

- County (stormwater; WAA; IRWM); cities (UWMPs as applicable; wastewater; recycled water)

3.1.2 State and Federal Monitoring and Management Agencies

- SWRCB; DTSC; CalGEM; DPR; USEPA

3.1.3 Groundwater Level Monitoring

- County; USGS; DWR; SWRCB

3.1.4 Groundwater Extraction

- Public systems; Ag (estimates); GDE (estimates); Discretionary Permits

3.1.5 Groundwater Quality Monitoring

- SWRCB; USGS; DWR; County; Public systems

3.1.6 Surface Water Monitoring

- SF Bay RWQCB; USGS; County

3.1.7 Surface Water Diversion Monitoring

- SWRCB (eWRIMS – Water Rights Information Management System)

3.1.8 Land Subsidence Monitoring

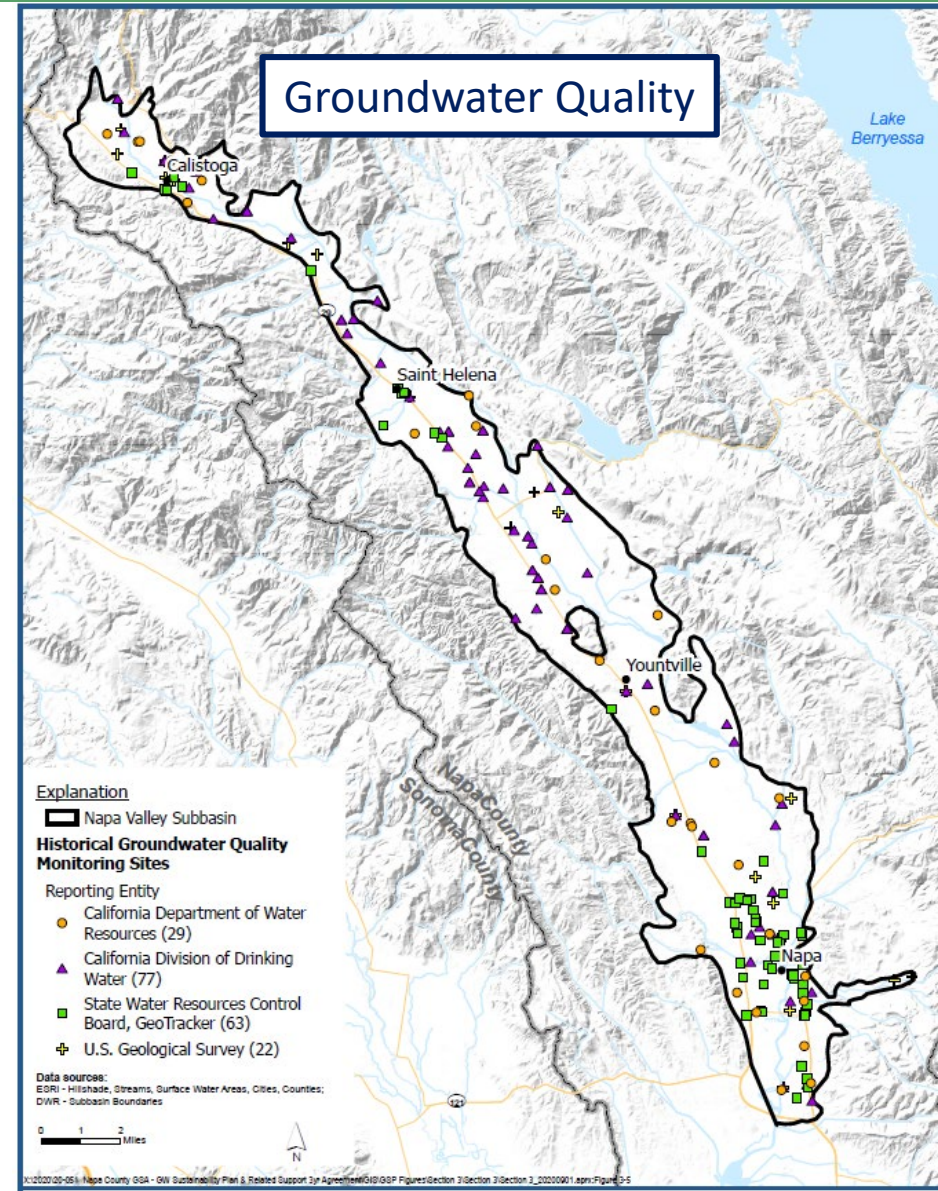
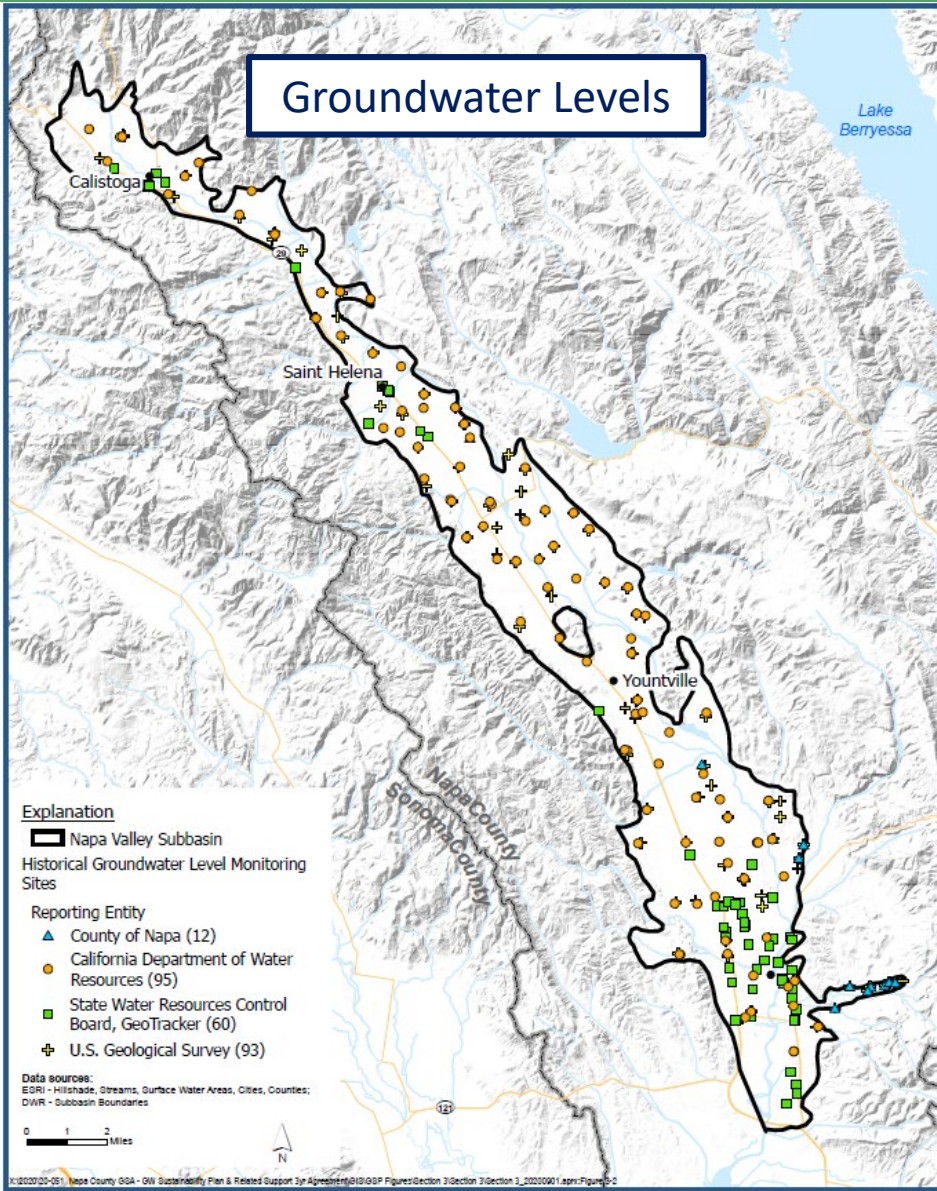
- NGS; UNAVCO; Remote satellites (InSAR)

3.1.9 Conjunctive Use Programs

- County

Describes existing water resources monitoring and management programs in the Subbasin.

Examples: Historical Monitoring Programs



Section 3.2: Land Use Elements or Topic Categories of Applicable General Plans



3.2.1 Historical Land Use and Water Resource Management and Advisory Committees

- County (Water Advisory Committee; GW Ordinance; WICC; GRAC)

3.1.2 Napa County General Plan

- Conservation elements

3.1.3 Municipal General Plans and Relevant Ordinances

- Cities (various Ordinances pertaining to items such as water conservation, wells, stormwater, public services, sewer systems, zoning, water efficient landscaping, wetlands/marshes, pollution control)

Describes existing land use monitoring and management programs in the Subbasin.



Section 3.3: Additional GSP Elements

Describes other GSP-related elements related to the Napa Valley Subbasin. These are programs already in place or which need to be developed and/or expanded in the context of achieving the Sustainability Goal for the Subbasin.

3.3.1 Additional GSP Elements

- Well permitting, construction, abandonment (inactive), destruction
- Protect wellheads and recharge areas
- Consult with State and Federal Agencies
- Consider existing land use policies
- Address and avoid impacts on groundwater dependent ecosystems
- Control of saline water intrusion
- Remediate contaminated groundwater
- Replenishment of groundwater extraction
- Implement/remove impediments to conjunctive use or underground storage
- Measures addressing recharge, diversions to storage, conservation, recycling, etc.
- Efficient water management

Section 3.4: Notice and Communication



Describes the beneficial uses of groundwater in the Subbasin and who uses the groundwater. Describes how the users receive information about GSP development and have an opportunity to provide input.

3.4.1 Beneficial Uses and Users

- Overlying GW rights; municipal and other water systems; land use and planning agencies; environmental users (species that rely on groundwater and agencies/others that represent those interests); SW users; disadvantaged communities

3.4.2 Public Notices and Opportunities for Public Engagement

- NCGSA and GSPAC meetings and other means

3.4.3 Comments on the Plan

- Incremental release of draft Sections; compiled draft GSP

3.4.4 GSA Decision-Making Process

- GSPAC discussions, consideration of stakeholder/public feedback, coordination with and final approval by NCGSA

Key Questions for GSPAC Consideration



Questions for GSPAC Members to Consider during Review of Draft Section 3 (not intended for discussion on September 10)

Section 3

- Does Section 3 reflect current public agency sponsored water resources monitoring and management programs? If there are others, please identify them.
- Does Section 3 describe current public agency sponsored land use monitoring and management programs? If there are others, please identify them.
- Does Section 3 sufficiently identify and describe beneficial users and uses of groundwater?
- Given that there will be a GSP Stakeholder Communication and Engagement Plan appended to the GSP, does Section 3.4 sufficiently describe opportunities for public engagement?

Looking Ahead



GSP Section 3 Survey – Responses due by September 21

- Email survey link and review materials to GSPAC and Interested Persons List

Next GSPAC Meeting - October 8

- Overview of guidance on Groundwater Dependent Ecosystems (GDEs)
- GSP Section 3 feedback
- Introduce GSP Section 4 (Basin Setting) and Section 5 (Monitoring Network and Program)

Agency Contacts



Napa County Groundwater Sustainability Agency

1195 Third Street
Suite 310
Napa, CA 94559

Minh Tran, *Executive Officer*

Napa County Groundwater
Sustainability Agency
1195 Third Street
Suite 310
Napa, CA 94559
minh.tran@countyofnapa.org

David Morrison, *Director*

Planning, Building, and
Environmental Services Department
1195 Third Street
Suite 210
Napa, CA 94559
david.morrison@countyofnapa.org

Jeff Sharp, *Principal Planner*

Planning, Building, and
Environmental Services Department
1195 Third Street
Suite 210
Napa, CA 94559
jeff.sharp@countyofnapa.org



Thank You

Reid Bryson

RBryson@lsce.com

(530) 661-0109



**Luhdorff &
Scalmanini**
Consulting Engineers