



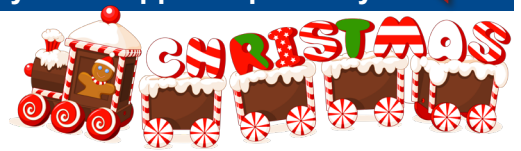
Upper Valley DISPOSAL & RECYCLING

PHONE
707-963-7988
WEBSITE
www.uvds.com



Your Guide to Waste Management and Resource Recovery in the upper Napa Valley

Happy Holidays!



Upper Valley Disposal & Recycling and Clover Flat Resource Recovery Park & Landfill wish you a healthy and safe holiday season. We thank you for your continued partnership in waste reduction, recycling and organics processing throughout the year.

We have a number of important new staff members at our facilities and would like to introduce you to them: Kano Galindo, Site Manager for Clover Flat Resource Recovery Park joined our team in May. He relocated from Texas and has spent most of his professional career operating and managing large scale landfills.

We are in good hands! Doug Speicher is our VP of Operations and comes to us from Paradise California. Doug also has had a long professional career of owning and operating waste collection companies in Northern California. Doug is in charge of all facilities, fleet management and personnel, safety programs and commodity processing. We are sorry for the loss of his community in Paradise and are very grateful to have him join our company and relocate here. Lexi Mangola, a recent graduate from CalPoly San Luis Obispo with a degree in Ag Business, has joined our community outreach team and is eager to help our customers comply with regulation changes effecting our industry. We wish you all the best in 2020!

Service Tips

- * All services will be one day late following Christmas Day and New Year's Day
- * If you produce extra bags of trash or mixed recycling during the holiday season, please call our office one day before your collection to notify us about the extras and authorize the charge.
- * We do not accept Styrofoam, or plastic bags in the recycling cart. Be sure to bag, knot and tie Styrofoam pieces in bags and place in your brown trash cart.

Holiday Schedule
In Celebration of the holiday season our facilities will be closed on the following days:

Upper Valley Disposal & Recycling will close at 12pm on Tuesday December 24th, as well as Christmas Day, Wednesday December 25th and New Year's Day Wednesday January 1st

All Residential Service will be
ONE DAY AFTER YOUR NORMAL COLLECTION DAY FOR BOTH WEEKS

Pope Valley and Berryessa Estates will occur on Saturday for both weeks.

Clover Flat Resource Recovery Park & Landfill will be closed on Wednesday December 25th and Wednesday January 1st.

- * Wrapping paper and greeting cards can be placed in your recycling.
- * All cardboard is to be broken down flat before being placed in your recycling.
- * Christmas trees can be placed in your green waste cart. Trees must be cut into 3ft sections. We cannot pick up whole trees as they get stuck in the collection truck.
- * Free drop off of Christmas trees at Clover Flat Landfill through January 19th.
- * Do not place hot or warm ashes from the fire place or indoor wood oven in your waste cart. Be sure ash is cold before disposing.
- * All carts should be placed out for collection the night before service day. All lids must fully close to ensure debris does not fall to the side and litter our community. If you have extra waste or recycling please notify the office in advance, 707-963-7988.



In November St Helena High School's Interact Club helped to divert 98% of the waste created at the Up Valley Family Centers and Nimbus Arts' annual Dia de los Muertos community event which had more than 200 attendees. Only 1.3 lbs. of trash from the event went to the landfill! The rest was recycled and composted. Great work Interact Club, Up Valley Family Centers and Nimbus Arts!

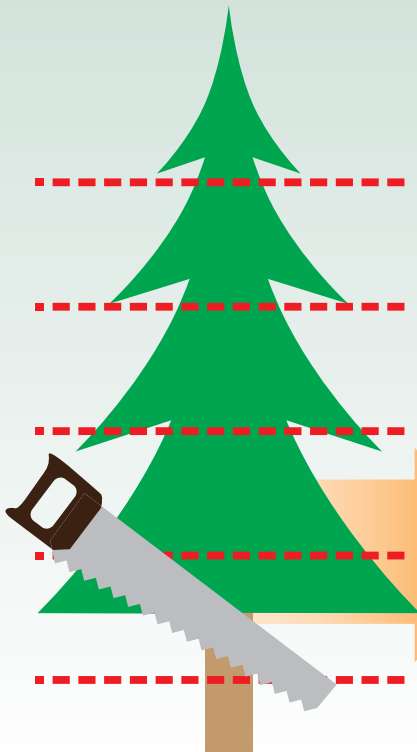
Save the Date, April 4

HHW Event in St. Helena

Hazardous Waste Collection Event

Time:
Saturday April 4th
9am-3pm
Location:
Upper Valley Disposal & Recycling Facility,
St. Helena
More details to come ...

Christmas Tree Recycling



Cut up Christmas tree small enough so that it can be placed into yard waste cart with the lid fully closed.



Annual Christmas Tree Pick-up & Recycling Day

- Saturday, January 4th -



BOY SCOUTS OF AMERICA

Christmas tree collection in city limits. Remove ornaments, lights and stand. No flocked trees or garlands. Trees should be out at the curb by 8am to ensure pick up.

City Limits of Calistoga Troop 18

Donations are greatly appreciated and can be left on the front door or mailed to:
BSA 3910 Mt Home Ranch Road,
Calistoga Ca. 94515
For more information contact:
Dan Herndon 707-217-0294 or dano1606@att.net.

City of St. Helena Troop 1

Troop 1 in St Helena is asking for a \$10 donation. Tree tags for this event can be purchased at Steve's Hardware, Central Valley Garden Center and Sunshine Foods. Contact Ann Sorenson for more information @ 963-7465

What Goes in Your Blue Recycling Bin?

ALL MATERIALS SHOULD BE CLEAN AND DRY. PLACE RECYCLABLE ITEMS LOOSE IN CART

Clean Paper



Rigid Plastic



Metal



Glass



What DOES NOT Go in Your Blue Recycling Bin?

Packaging



Non-Recyclables



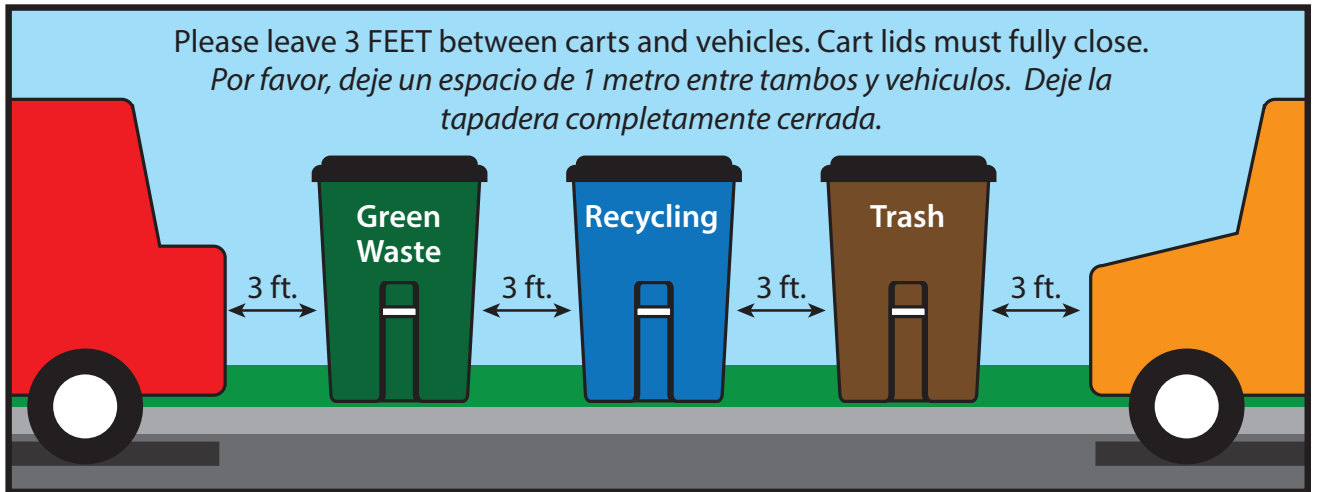
Pet Waste & Diapers



Hazardous Waste



Please leave 3 FEET between carts and vehicles. Cart lids must fully close.
 Por favor, deje un espacio de 1 metro entre tambos y vehiculos. Deje la tapadera completamente cerrada.



Recycle E-Waste, Batteries, Fluorescent Bulbs and Tubes & X-Mas Lights Year Round at Clover Flat



Open Tuesday-Saturday 9-4 and Sunday 9-3

4380 Silverado Trail, Calistoga

Free drop off of electronic waste at Clover Flat Recycling Center. TVs, computers, cell phones, batteries of all types, fluorescent bulbs and tubes etc. Visit www.uvds.com for a complete list of free drop off materials, including SHARPS and paint products!



UPPER VALLEY DISPOSAL & RECYCLING
 P.O. BOX 382
 ST. HELENA, CA 94574

As a reminder, now you can go to our website at www.uvds.com. Look for the Online Bill Pay link to easily pay your bill. Please call our office if you have any questions: 707-963-7988

**Pay Bill
 On Line**

INVITE THESE COUPLES TO YOUR HOLIDAY PARTIES!



MAKE IT EASY TO RECYCLE BY GROUPING RECYCLING AND TRASH BINS TOGETHER



TO DOWNLOAD SIGNS FOR BINS VISIT WWW.COUNTYOFNAPA.ORG/RECYCLING