

# Final Multi Agency Meeting Of The Year. Attendees:

**Water Board, Fish & Wildlife, Cal-Recycle, LEA  
Members Of County Of Napa Environmental  
Management, Building & Planning Department**



**CFL Staff, Golder Engineering, SOL Ecology For  
Creek Restoration And Remediation**



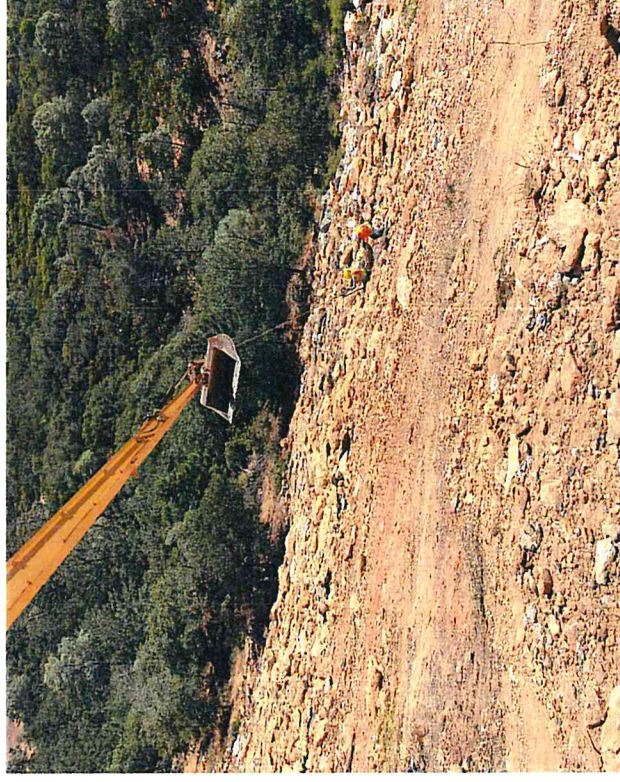


# Fire Debris Removed from Downslope Module 5

326F Long reach excavator



Fire Debris slope removal operations





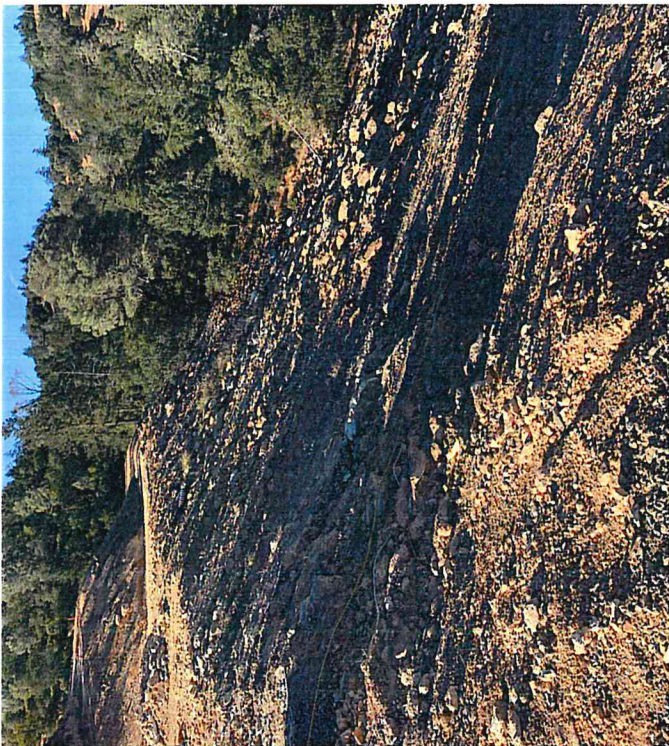
**Five man team to remove fire debris by cable and bucket**





# North East Perimeter Access

Slope without erosion control



Geo-Grid and Geotextile installed to control erosion and slope stability





**Road without BMPS**

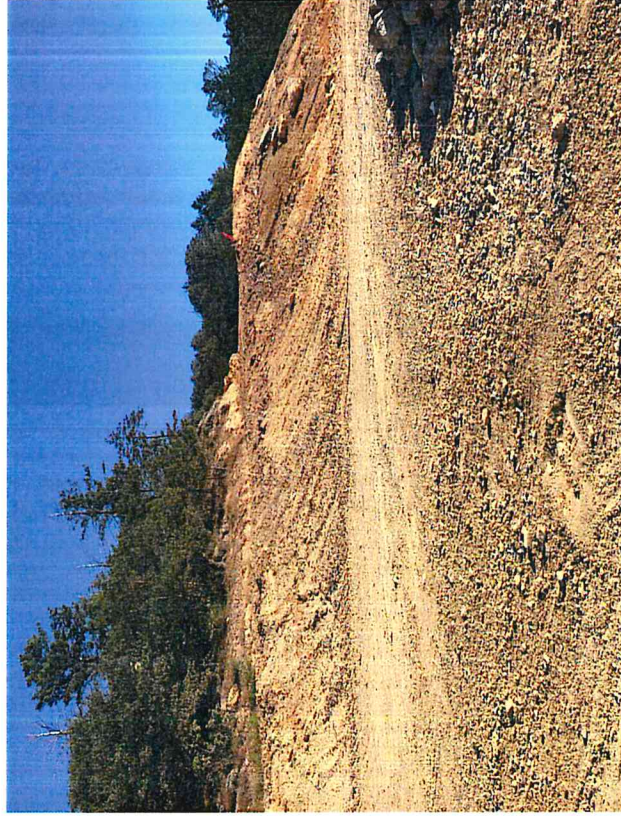


**Geotextile and Base Rock**





**Access road without BMPs**



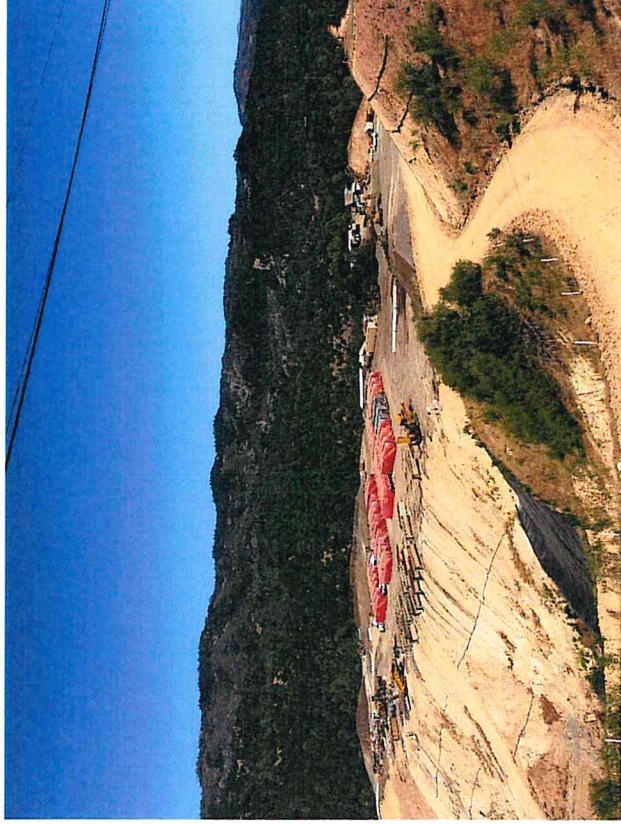
**BMPs: Geotextile and Base Rock**





# Module 4and5

Module 4 and 5 slope project



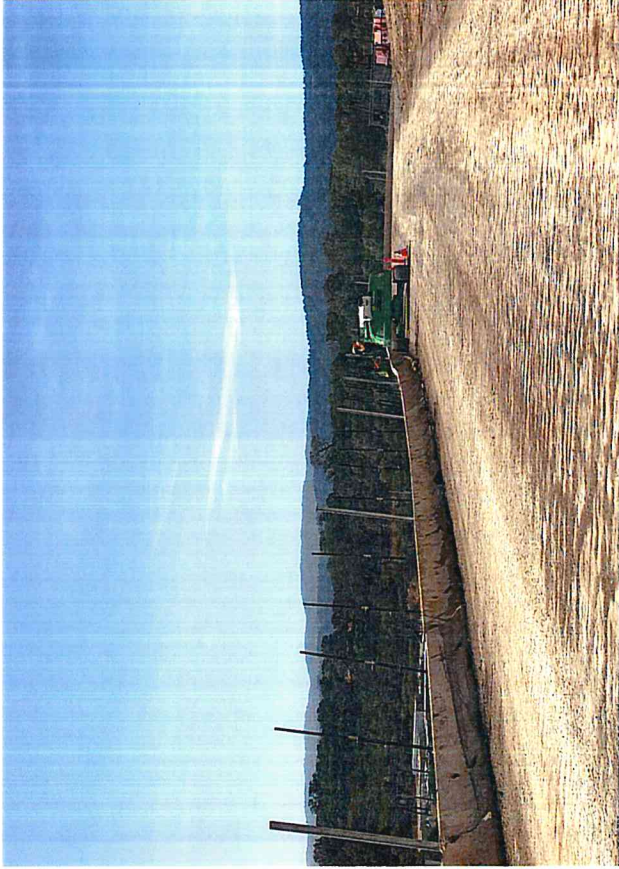
15k Yds soil cap and Hydroseed



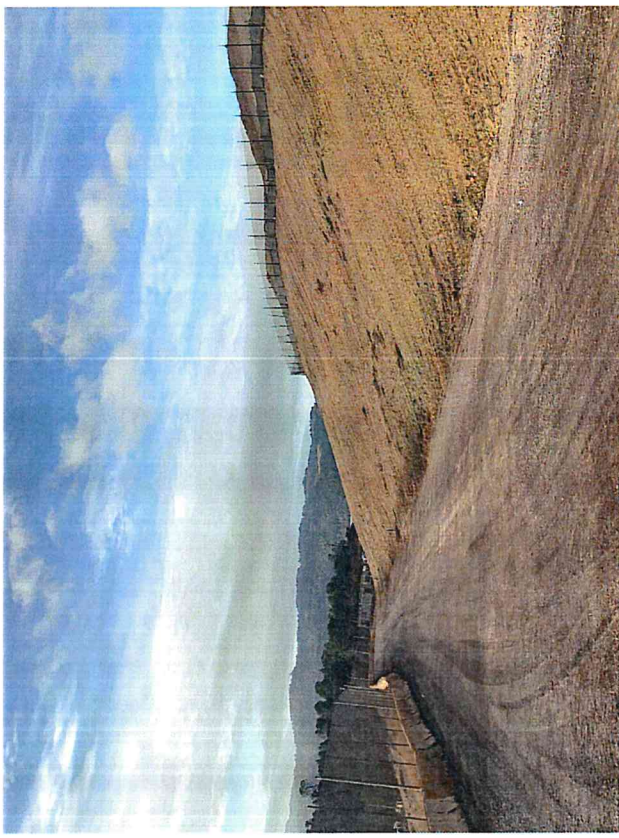


# Landfill Road

Litter Fence and K-Rail traffic Safety Control



Hydroseed and Litter Fencing



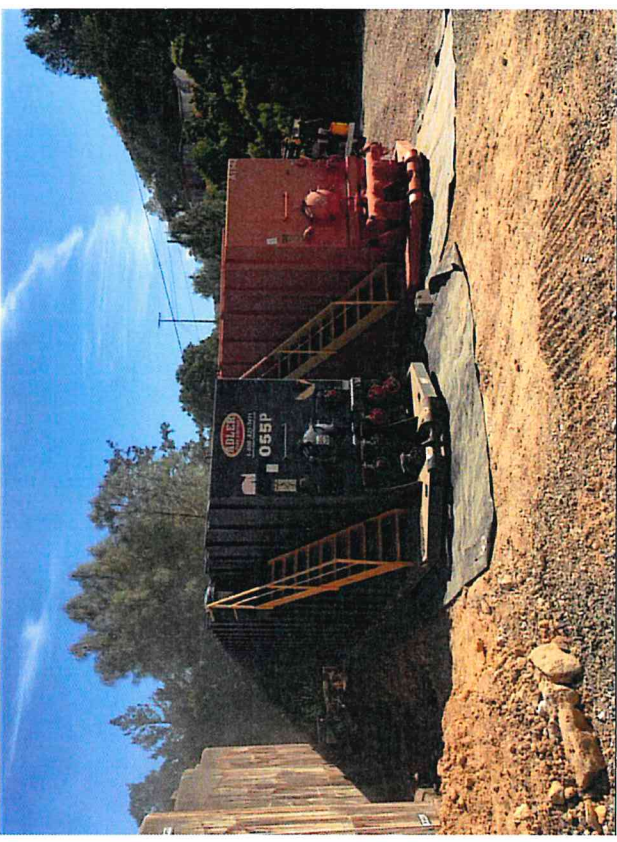


# Leachate Tanks

Demolition of three concrete leachate 10k gallon tanks with 30k gallon capacity



Two of Five 21k gallon tanks for a total project improvement capacity of 105k gallons





# Working Face

Working Face Prior to Management Improvements

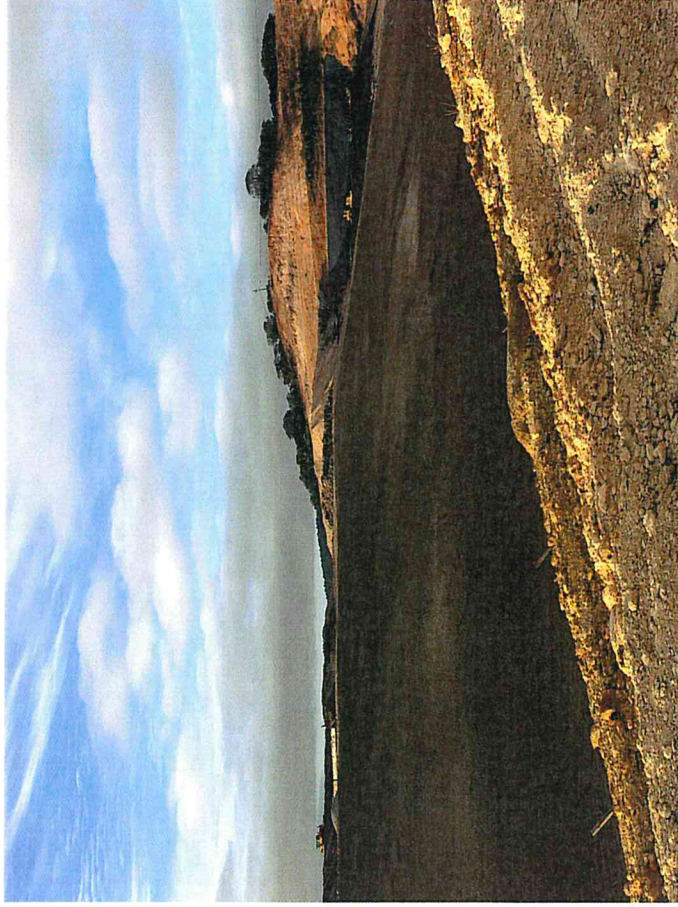


Working Face used to Store RV's and Containers





**Wet Weather Project and Working Face Improvements**



**Wet Weather Phase Two, Removal of 30 Frack Tank Containers and RV's**





# Trash Compactor

826K-90,207 lbs. compacting to maximize tonnage to control presence of air in waste at the surface of landfill, reduces risks of fire, less infiltration of rain water inside cell. Water remains close to the surface, and higher percent evaporates instead of percolating through landfill. Reduces amount of leachate generated, reduces ground pollution risks and lowers leachate treatment costs



**826C-69,732 lbs.**





# Stock Pile Area

Stockpile BMP Project



Relocated containers, base rock, hydroseed





# Benches

**Bench BMP Project**



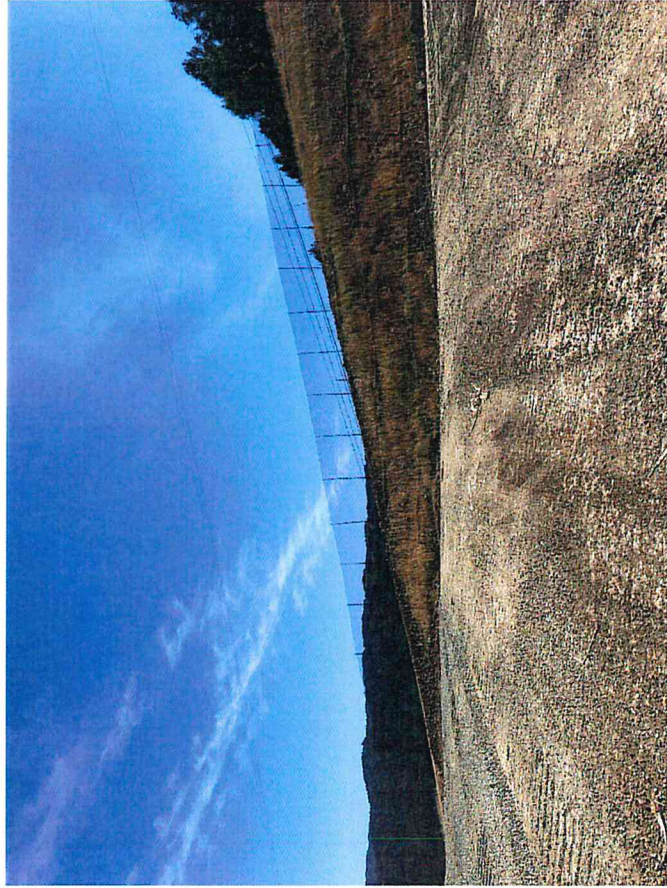
**Base Rock, Jue-Netting and Drain Inlets**





# Litter Fencing

West Perimeter



Landfill ramp, litter fence and K-rail for customer and employee safety



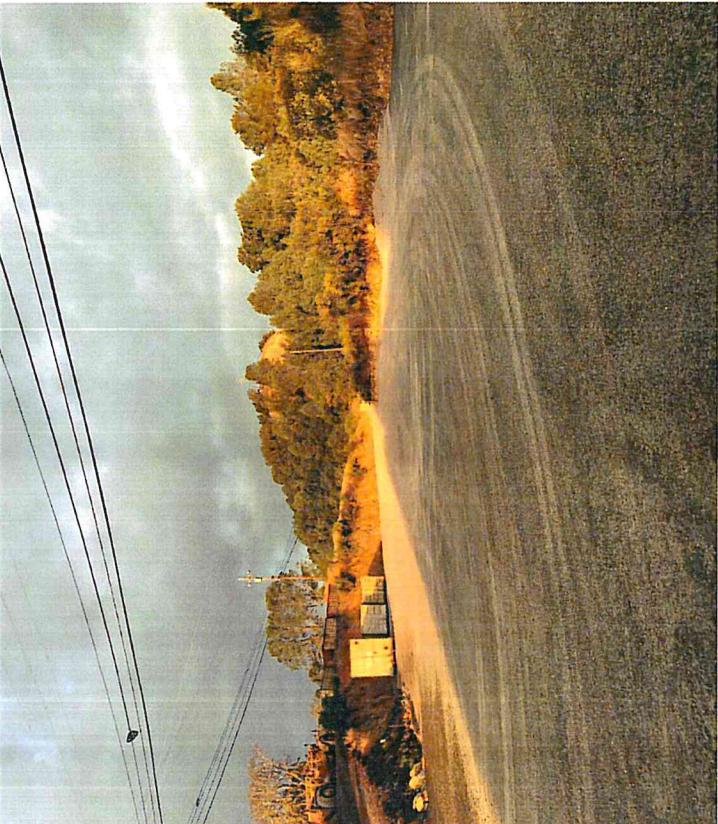


# Container Space Project

**Recycled years of metal stockpile**



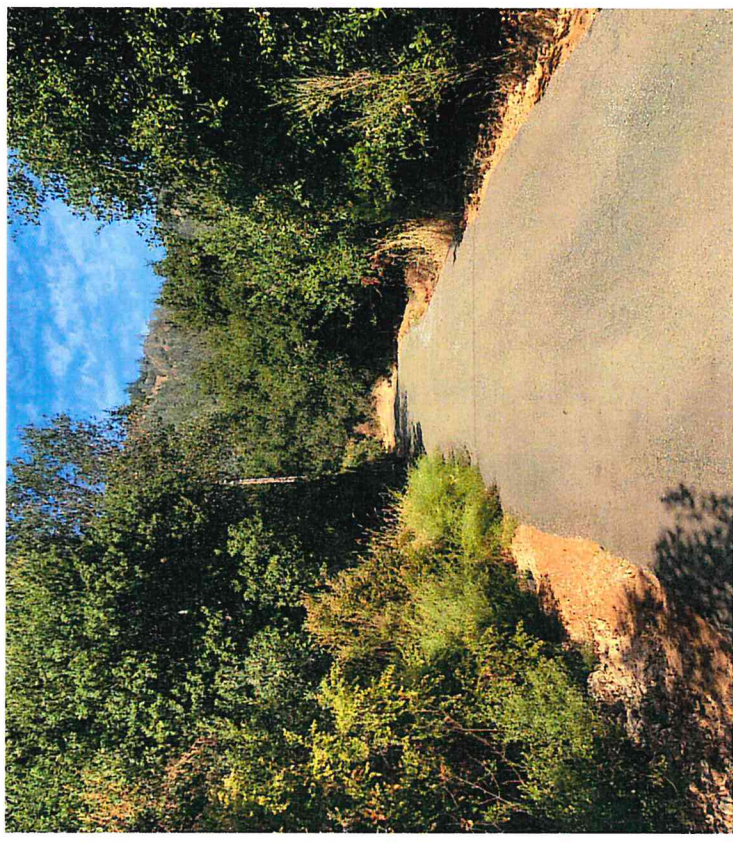
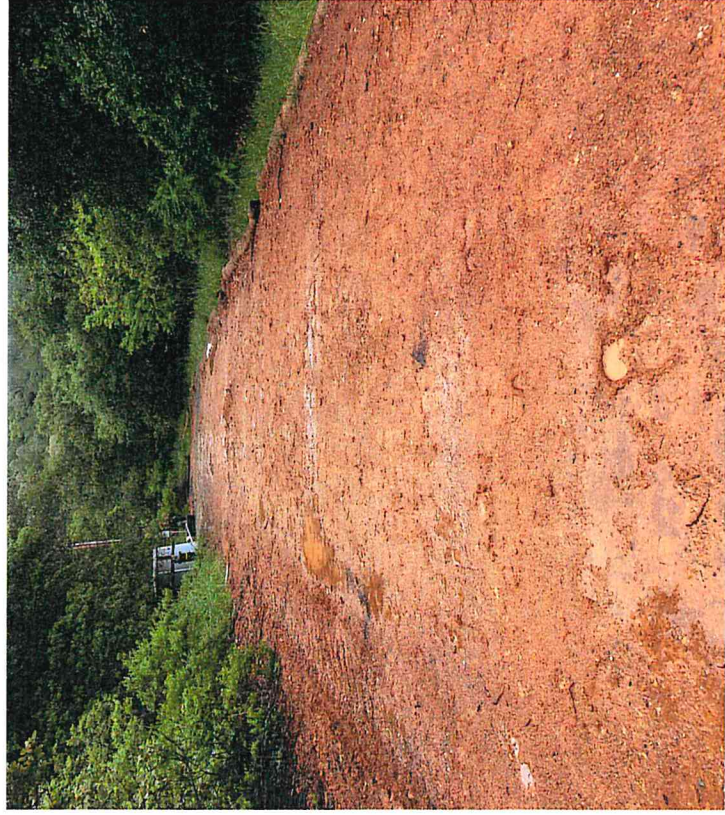
**Base rock for container storage**





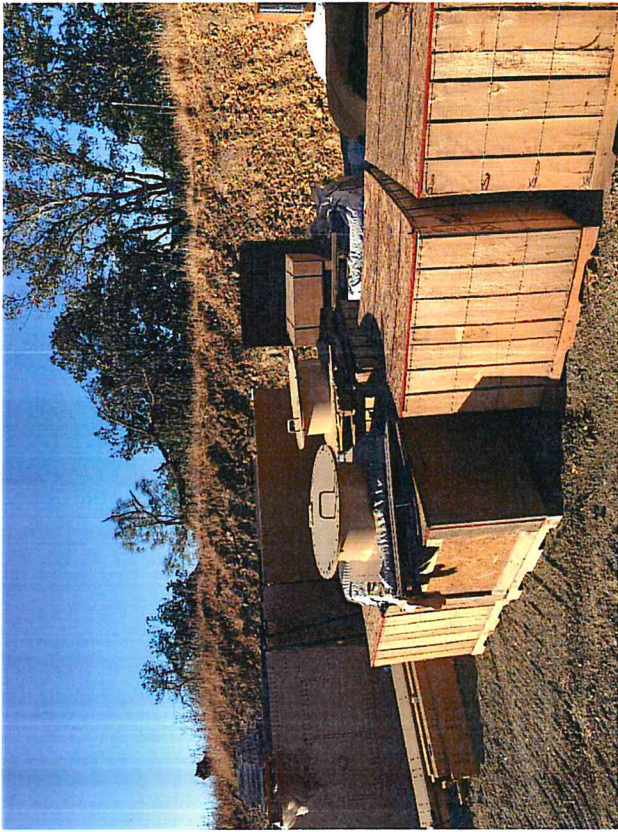
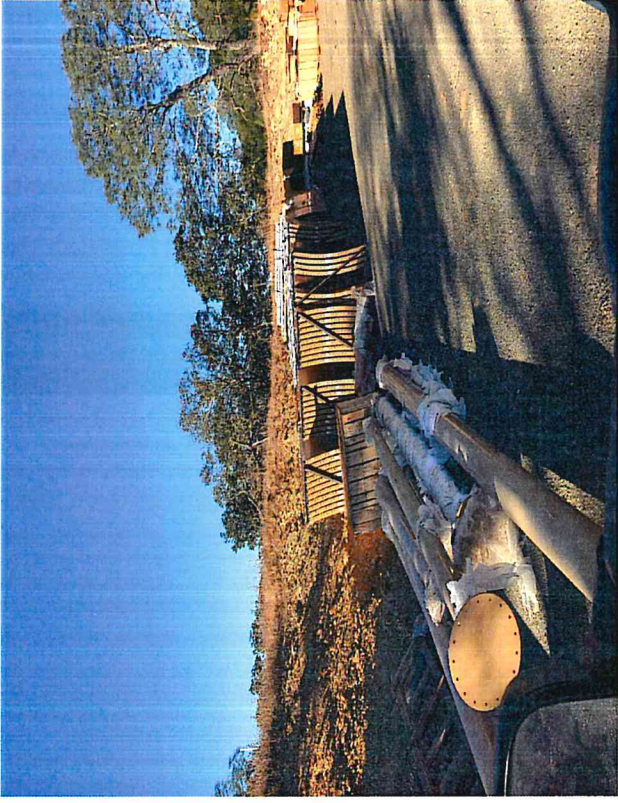
# 1A Bench

Base rock, removed condensate storage tank to increase capacity to prevent overflow 10/15/19



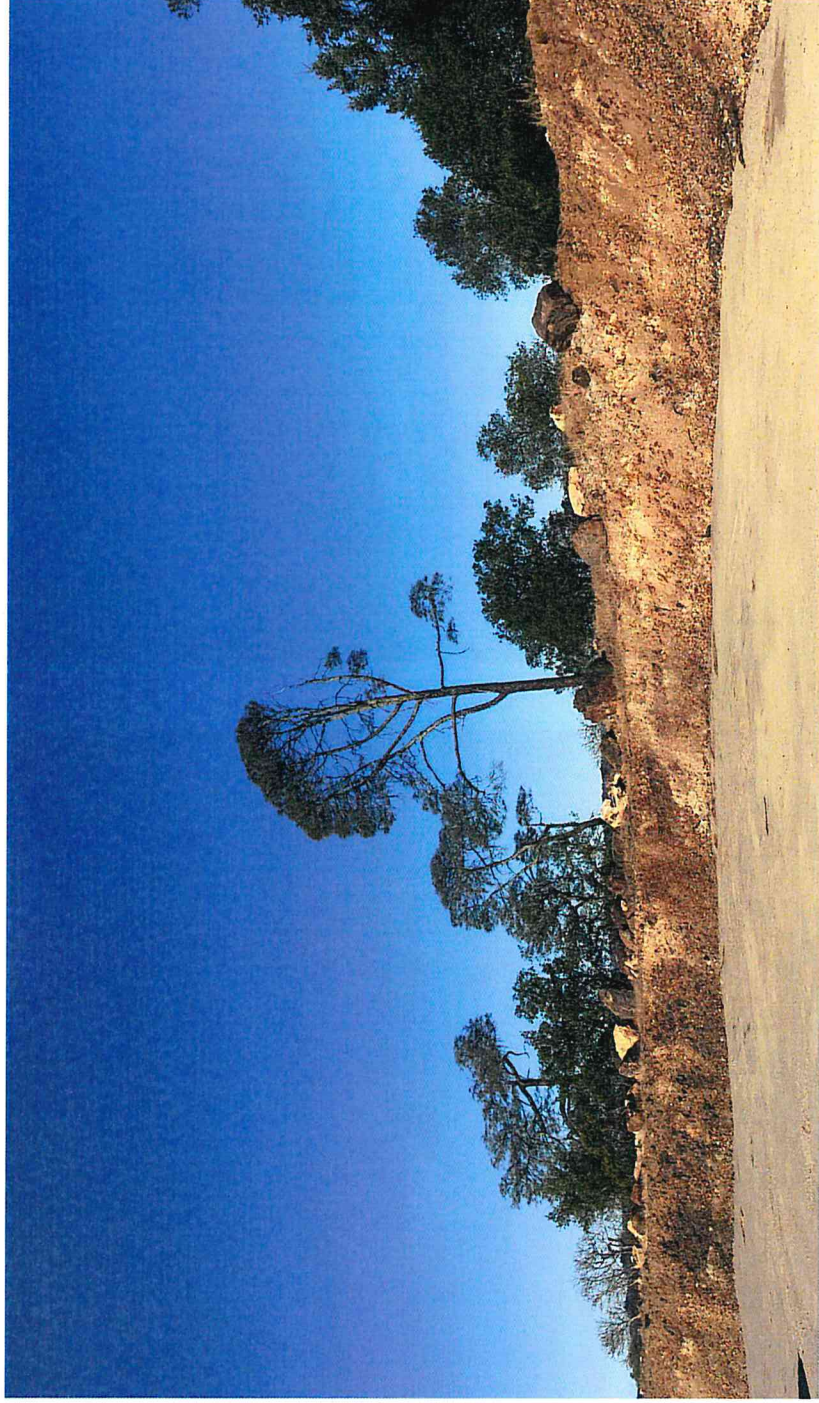


# Fire Protection Water Storage Tanks





**Working with Summit Engineering to Permit and Install 450,000  
Gallon Water Tank**





# Creek Restoration Project

Culvert Sediment



Culvert Sediment Removed





**Creek Sediment Removal**





# Clover Flat Landfill – Next Steps

## OPERATIONS

- CFL filed a Five-Year Operations Plan with the LEA and the Water Board
- Disposal for next 5 years on current footprint with updated leachate and stormwater plans in place
- Soil daily cover to be cut from adjacent Module 4A and 4B for the next 8 years
- Design and permit module 4A within the next 3 to 4 years, to be used in 5 years
- Restrict use in upper stockpile area other than grinding over-sized boulders next summer
- There will be no cut or fill in the upper stockpile area for over 5 years allowing revegetation and restoration



## Closing

Managing CFL has been more than landfilling in the last six months, we have utilized the latest advances in landfill technology

We must continue to work with our engineering firms for current projects and long-term projects

CFL will be operated and maintained to meet or exceed local, state and federal regulations to protect our environment

Thanks to Mrs. Sylvia Pestoni, Christy Pestoni, Linda Sereni for their belief in the preservation of a cleaner and safer environment not just for today but for generations to come and for us all to know that it's not your grandfather's landfill mentality anymore

