



Napa Sanitation District

General Manager's Report

for

April, 2019

Contents:

- a. Transmittal Memo
- b. Budget Status and Cash Summary
- c. Key Information Graphs – Fund Balances, Treatment Plant and Collection
- d. Fund Balances
- e. Development Processing
- f. Construction Inspection
- g. Pollution Prevention
- h. Recycled Water Deliveries
- i. Biosolids Handling
- j. Collection System Maintenance
- k. Treatment Plant Operations
- l. Treatment Plant Maintenance & Laboratory
- m. Capital Project Expenditure Summary



NAPA SANITATION DISTRICT

General Manager's Report

DATE: June 5, 2019

FROM: Timothy B. Healy, General Manager

SUBJECT: General Manager's Report for April 2019

REGULATORY COMPLIANCE:

Collection System Compliance:	0 Category 1 SSO's, 0 Category 2 SSO's, and 3 Category 3 SSO's
NPDES Permit (WWTP) Compliance:	Full compliance with all regulations
Air Quality Compliance:	Full compliance with all regulations
Recycled Water Compliance:	Full compliance with all regulations
Biosolids Compliance:	Full compliance with all regulations
Significant Comments:	None

FISCAL STATUS:

Period Covered:	July 1, 2018 – April 30, 2019
Percent Fiscal Year:	83.3%
Operating Expenditures to date:	78.5%
Historical Expenditures to date:	80.7%
Significant Comments:	Sewer service charges were received from the second installment payments of the property taxes in April.

PERSONNEL:

Significant events for the month of April 2019 in the Human Resources Department:

New Hires:	None
Separations:	None
Promotions:	None
Recruitment Activities:	Interviews held for Operator position; interviews held for Maintenance Intern Temporary position and Engineering Summer Intern positions.
Injuries:	None

Summaries of Operational Highlights are on following pages.

COLLECTIONS:

Significant events for the month of April 2019 in Collection System Maintenance include:

- The District had 0 Category 1 Sanitary Sewer Overflows (SSO's), 0 Category 2 SSO's and 3 Category 3 SSO's during the month. (A Category 1 is defined as an SSO that reached a drainage channel and/or surface water or; an SSO that reached a storm drainpipe that was not fully recovered and returned to the sanitary sewer system. A Category 2 is defined as an SSO that is equal to or greater than 1,000 gallons that did not reach a surface water. A Category 3 is defined as an SSO that is less than 1,000 gallons that did not reach a surface water. These are usually minor overflows of less than 10 gallons from cleanouts on District laterals that can be cleaned up by the crews.)
- The repair crew installed 12 cleanouts and repaired 2 cleanouts. They also repaired 1 lateral, lined 2 laterals and reconnected 1 lateral. Additionally, the service response/programs crew completed 154 work orders in support of the grease and odor control program, responded to 47 customer requests for service (12 were NSD problem) and closed out 347 mark and locate request tickets.
- The preventative maintenance crews ran work orders on 100 laterals, cleaned approximately 53,721 feet of main line and CCTV inspected 60 laterals. In addition, the CCTV truck televised 15,089 feet of mainline.

TREATMENT PLANT:

Significant events for the month of April 2019 in the Treatment Plant Department:

Plant Operations:

- For April 2019, the plant's influent flow was 261.4 MG as compared to last year flow for April 2018 of 321.5 MG
- Flow to the Napa River for April 2019 was 424.4 MG compared to last year's flow of 319.8 MG.
- There was .32" rainfall for April 2019 (Carneros Rainfall Center) as compared to 3.80" rainfall for April 2018.
- Pond 4 end of the month recorded level reading was 24.48" as compared to April 2018 of 36.46". During April pond 2 and pond 3 were dewatered in preparation of pond water transfer structure replacement.
- Preliminary and Primary treatment were bypassed for five days during the lining of the 36-inch primary influent pipe.

Power Consumption and Production:

- April power purchased from PG&E was 423 MWH in comparison to March 2019 purchase of 504 MWH.
- Cogeneration unit ran 716 of 720 hours for the month – 99.44% uptime, averaging 318.97 Kw, producing 244 MWH of energy.
- Solar generation in April was 173 MWH, compared to 145 MWH in March.

Maintenance:

Significant events for the month of April 2019:

Process Maintenance

- Cogeneration unit monthly emission test - in compliance with BAAQMD permit
- Cogen Service:
 - Changed oil & sock filters
 - Replaced pre-air filter and main air filter
 - Replaced all belts
- Change Siloxane Filters Media
- BPS1/air compressor #1, replaced solenoid valve to hydro tank
- IPS mechanical bar screen #1/replaced up-stream level transducer
- Replaced board on headwork's LEL transmitter
- Replaced BPS1 ARV CA601
- **Projects**
- CIP 19715 ARV replacement complete
- Configured new Godwin pumps for level control
- Certified Monorail in east gallery
- Replaced flow tube and transmitters on north and south recycle lines

Standby Power

- Plant generators operational testing only
- Riverpark, Stonecrest, West Napa operational testing only

Influent Pumps

- All pumps operational

Laboratory:

Effluent (EFF-001) Summary

There were no violations of **Effluent** limits during the month of April 2019. All parameters were monitored at the required frequencies. Due to EFF-001 discharge stopping on April 30 until

November 1, only one Enterococcus sample was collected the week of April 28, 2019. The following were notable sampling events:

- April 2, 2019: Mercury, Metals, Cyanide, Nutrients
- April 1-5, 2019: Acute Toxicity Bioassay
- April 9, 2019: Nutrients

The San Francisco Bay Regional Water Quality Control Board approved a treatment bypass for April 15 – April 19, 2019 adjusted monitoring for this period of essential maintenance. The following sampling was performed to satisfy the monitoring requirements:

- April 15-19, 2019: Acute Toxicity Bioassay
- April 15, 2019: Mercury, Metals, Cyanide, BOD, TSS, Ammonia
- April 15, 2019: PCB, as Aroclors
- April 15, 2019: Dioxin-TEQ
- April 15, 2019: Oil & Grease
- April 15, 2019: Enterococcus

Influent (INF-001) Summary

Monthly **Influent** monitoring of all parameters occurred at the required frequencies. The following were notable sampling events:

- April 2, 2019: Metals, Mercury, Cyanide

RECYCLING:

Significant events in the Recycling Department for April 2019 include:

- Recycled water delivered for the month of April 2019 was (19.654 million gallons), as compared to April 2018 (15.996 million gallons) is higher from the previous year due to Golf Course and Commercial property landscape demand. Delivered recycled water volume represents the sum of all use site flow meter consumption values.
- Staff hosted the Napa County RCD-American Canyon High School Sheehy Creek restoration effort located at the Jameson Reuse Site.
- Staff provided a refresher-training course for recycled water user supervisors with eighteen in attendance.
- Staff approved the connection of one new recycled water customer in the MST area.

POLLUTION PREVENTION:

Significant events in the Pollution Prevention and Outreach Division April 2019 include:

- There were ten tours of the treatment plant given to local students and community members.
- Three presentations were given in April at the Project WET Workshop for teachers, and at the Parent University Program meetings at Snow and Shearer Elementary Schools.
- NapaSan staff planned and participated in the annual Earth Day Festival. At the NapaSan booth, visitors learned what not to flush, how to care for the sewer system, and how to properly dispose of FOG.
- NapaSan, the City of Napa, and Napa RCD facilitated the Project WET workshop for teachers. Seven teachers took part in the two-night workshop to learn how to implement the Project WET curriculum into their classrooms.
- As part of EECNC, NapaSan staff helped to plan and hold an environmental film night at Napa Valley College to raise awareness and raise funds for the Darcy Aston Environmental Advocacy Scholarship.
- NapaSan staff wrote a grant proposal to the Mead Foundation for \$10,000 in Field Trip Bus Grant Funding for local students through the Environmental Education Coalition and the proposal was approved for funding.
- The total amount of unneeded medications collected since the drug takeback program began in September 2010 is 21,747.2 pounds.
- There were 19 ESME Washer Rebates issued this month for a total of \$950.

ENGINEERING / CAPITAL PROJECTS / DEVELOPMENT:

Significant events occurring in the Engineering Division for April 2019 include:

- Consultant continued work on the SCADA Master Plan.
- Contractor continued construction of the Headworks Equipment Replacement Project.
- Contractor continued construction of the Southeast Napa Sewer and Roadway Rehabilitation Project.
- Staff began design of the 2020 Collection System Rehabilitation Project.
- Consultant continued design of the Primary Clarifier Rehabilitation Project.
- Consultant continued design of the West Napa Pump Station Project.
- Consultant and staff continued work on Phase 1 of the Asset Management Program.
- Contractor continued construction of the 2018 Treatment Plant Improvement Project.
- Staff issued notice to proceed for the 2019 Treatment Plant Improvement Project to the low bidder, Valentine Corporation.
- Staff received and reviewed Statements of Qualifications for the SWRF Buried Metallic Piping Condition Assessment Project.

- Staff received and reviewed Statements of Qualifications for the SWRF 12kV System Condition Assessment Project.
- Staff awarded the Pond Transfer Structure Project to Asta Construction.
- Consultant continued working on the Collection System Master Plan.
- The contractor started the submittal phase of the MST Truck Fill Station Project.
- Staff reviewed 36 sets of development plans and deemed 19 sets of plans complete. The approved plans consisted of 11 tenant improvements, 3 residential dwellings, 2 residential laterals, 2 commercial buildings, and 1 residential demo.

Budget Status & Cash Summary - July 1, 2018 - April 30, 2019 (83.3% of the year)

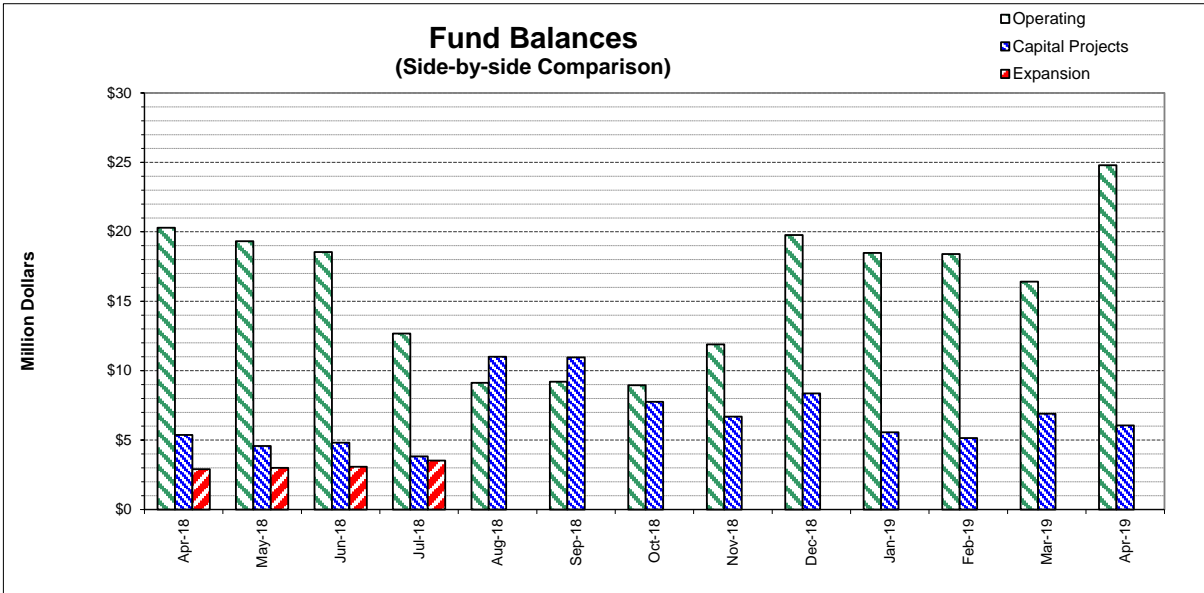
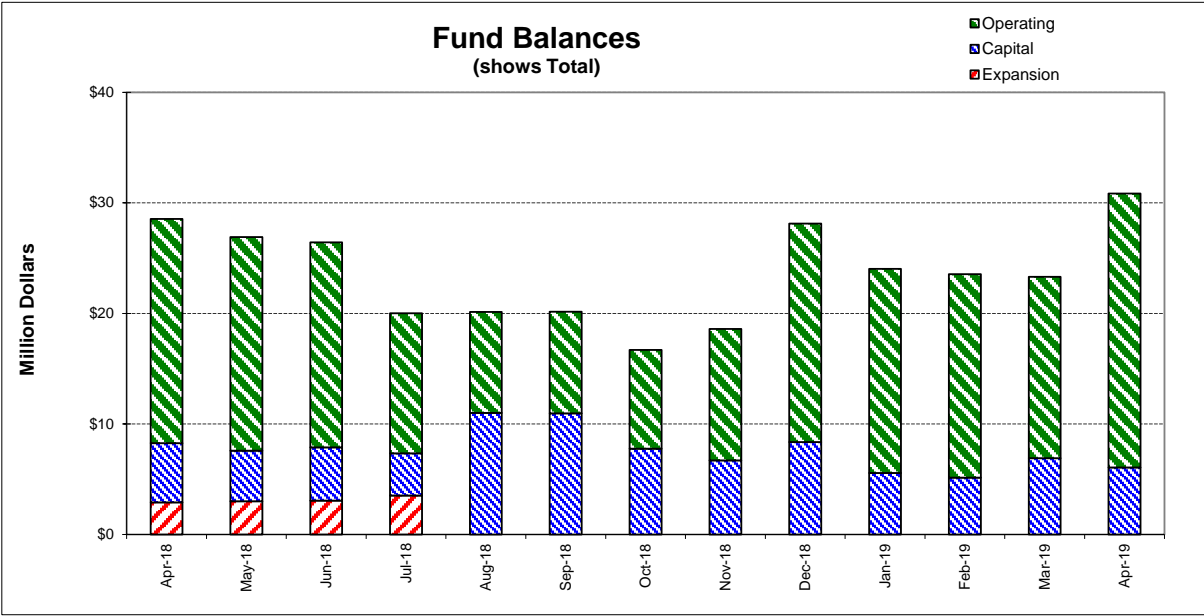
<i>Expenditures</i>	FY 18/19 Budget	Encumbrances	Expenditures to date	Committed to date	Remaining Balance	Percent Committed
Operating						
Salaries & Benefits	\$9,961,350	\$223	\$7,433,490	\$7,433,713	\$2,527,637	74.6%
Services & Supplies	6,160,300	639,728	3,876,704	4,516,432	1,643,867	73.3%
Taxes	29,800	-	40,691	40,691	(10,891)	136.5%
Debt Service	4,594,500	-	4,594,367	4,594,367	133	100.0% ^①
Intrafund Transfers	8,900,000	-	6,675,000	6,675,000	2,225,000	75.0%
Total Operating:	\$29,645,950	\$639,951	\$22,620,252	\$23,260,203	\$6,385,747	78.5% ^②
Capital						
Bldgs/Improvements & Equip	\$32,410,100	\$5,603,727	\$11,355,045	\$16,958,773	\$15,451,327	52.3% ^③
Intrafund Transfers	7,250,000	-	4,855,400	4,855,400	2,394,600	67.0%
Total Capital :	\$39,660,100	\$5,603,727	\$16,210,446	\$21,814,173	\$17,845,927	55.0%
Grand Total Expenditures:	\$69,306,050	\$6,243,678	\$38,830,698	\$45,074,376	\$24,231,674	65.0%

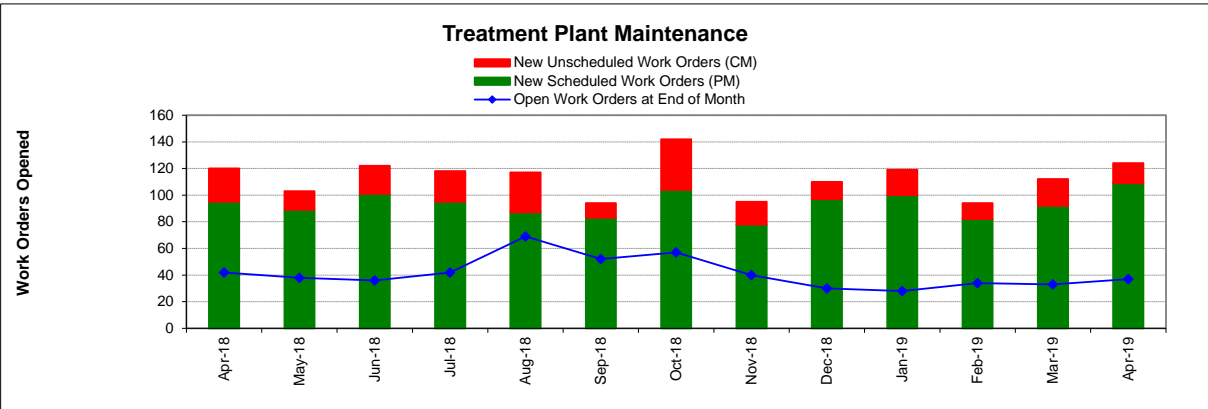
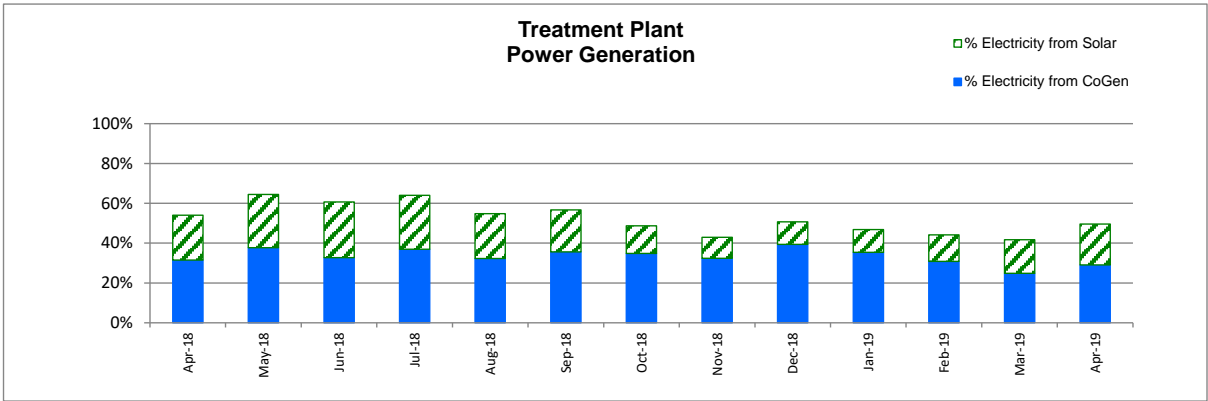
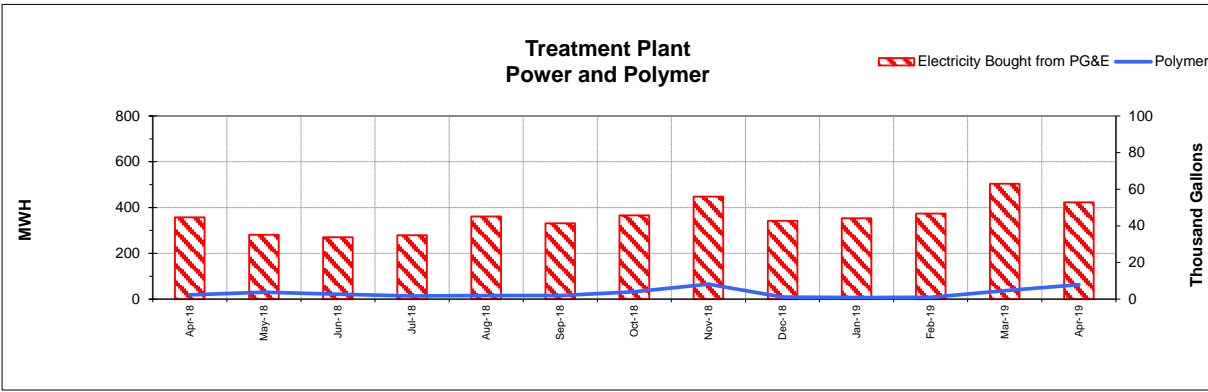
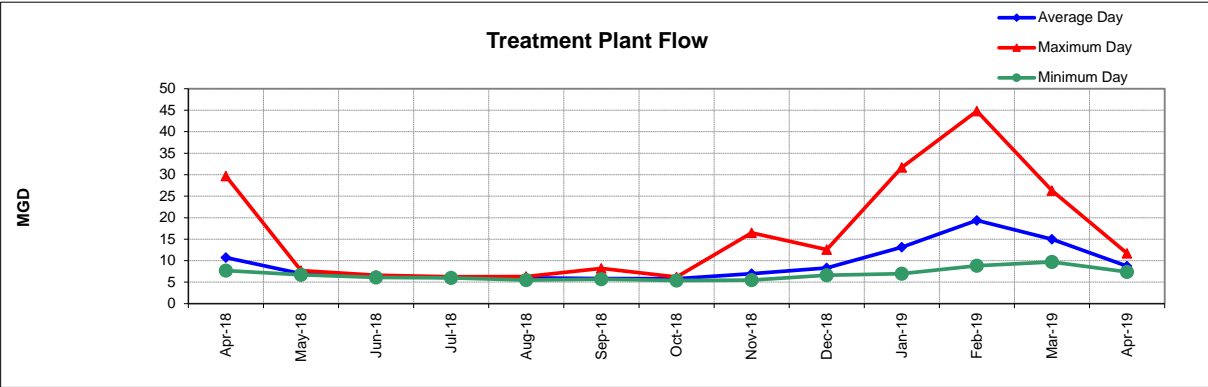
<i>Revenues</i>	FY 18/19 Budget	Encumbrances	Revenues to date	Revenues posted to date	Unposted Revenue	Percent Posted
Operating						
Use of Money/Property	\$1,036,000		\$1,061,490	\$1,061,490	(\$25,490)	102.5%
Charges for Services	29,571,800		28,297,835	28,297,835	1,273,965	95.7%
Miscellaneous Revenues	63,000		55,111	55,111	7,889	87.5%
Donations/Contributions (Capital Labor)	-		635,340	635,340	(635,340)	N/A ^④
Total Operating:	\$30,670,800		\$30,049,776	\$30,049,776	\$621,024	98.0%
Capital						
Use of Money/Property	\$0		\$484	\$484	(\$484)	N/A
Capacity Charges	4,614,600		1,966,091	1,966,091	2,648,509	42.6%
Intergovernmental	375,000		346,405	346,405	28,595	92.4%
Bond/Loan Proceeds	9,075,000		-	-	9,075,000	0.0% ^⑤
Sale of Assets	25,000		100,230	100,230	(75,230)	N/A
Miscellaneous Revenues	5,000		-	-	5,000	N/A
Intrafund Transfers	16,150,000		11,530,400	11,530,400	4,619,600	71.4%
Total Capital:	\$30,244,600		\$13,943,611	\$13,943,611	\$16,300,989	46.1%
Grand Total Revenue:	\$60,915,400		\$43,993,387	\$43,993,387	\$16,922,013	72.2%

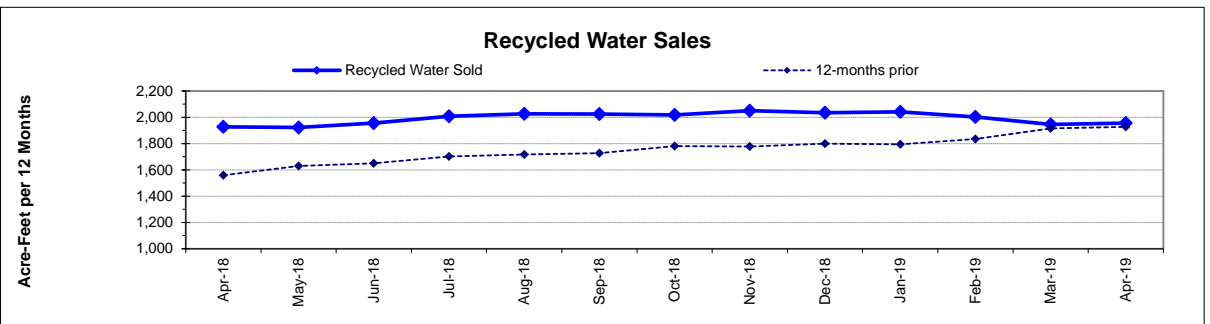
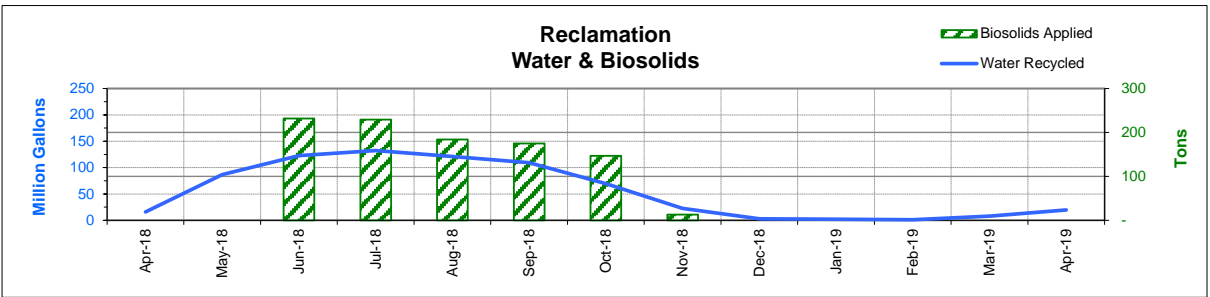
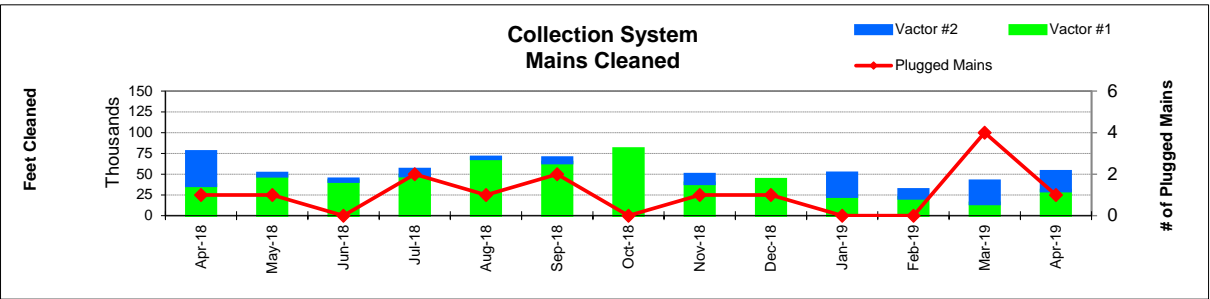
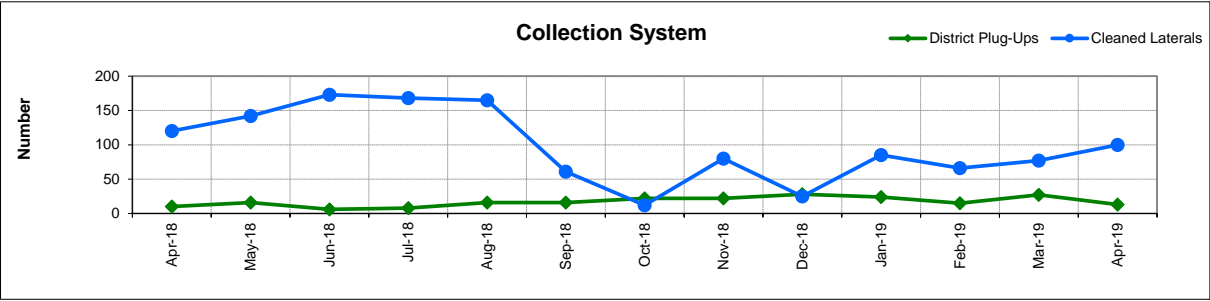
Cash on Hand as of 4/30/19 **\$30,850,860**

**excluding Debt Service restricted funds
4/30/19 -Effective Rate of Return = 2.24%

1. Series 2012A's and 2017's principal/interest payments are made in Aug & Feb
2. Includes Debt Service and Intrafund Transfers; otherwise is 74.2%
3. See Capital Project Status report for details
4. In-house Labor for Capital Projects (Contra acct for Salaries)
5. Waiting for approval of funds from State







FUND BALANCES - MONTHLY

CATEGORY	Apr-18	May-18	Jun-18	Jul-18	Aug-18	Sep-18	Oct-18	Nov-18	Dec-18	Jan-19	Feb-19	Mar-19	Apr-19
<i>(Thousand Dollars)</i>													
7800	20,290	19,326	18,538	12,676	9,123	9,204	8,951	11,888	19,772	18,473	18,394	16,405	24,793
7850	-	-	-	-	-	-	-	-	-	-	-	-	-
Subtotal Operating	20,290	19,326	18,538	12,676	9,123	9,204	8,951	11,888	19,772	18,473	18,394	16,405	24,793
Capital Improvement Projects	5,365	4,573	4,808	3,825	11,009	10,956	7,755	6,698	8,363	5,567	5153	6,899	6,058
Debt Proceeds	-	-	-	-	-	-	-	-	-	-	-	-	-
Subtotal Capital	5,365	4,573	4,808	3,825	11,009	10,956	7,755	6,698	8,363	5,567	5,153	6,899	6,058
Total Discretionary Funds	25,655	23,899	23,346	16,501	20,132	20,160	16,706	18,586	28,135	24,040	23,547	23,304	30,851
Expansion Fund (Restricted)	2,898	3,007	3,075	3,520	-	-	-	-	-	-	-	-	-
Total Restricted Funds	2,898	3,007	3,075	3,520	-	-	-	-	-	-	-	-	-
TOTAL ALL FUNDS	28,553	26,906	26,421	20,021	20,132	20,160	16,706	18,586	28,135	24,040	23,547	23,304	30,851

DEVELOPMENT WORKLOAD - MONTHLY

CATEGORY	Apr-18	May-18	Jun-18	Jul-18	Aug-18	Sep-18	Oct-18	Nov-18	Dec-18	Jan-19	Feb-19	Mar-19	Apr-19
<u>Phone Requests</u>													
Maps/Drawings	3	6	8	4	2	2	3	1	2	6	2	4	0
Lateral Permits	-	-	-	-	-	-	-	-	-	-	-	-	-
Policy Questions	5	9	8	9	10	4	6	3	6	8	7	5	5
Development Questions	44	79	80	61	63	28	70	41	44	40	35	48	53
Miscellaneous	11	17	27	37	24	26	20	18	25	27	18	25	29
TOTAL	63	111	123	111	99	60	99	63	77	81	62	82	87
<u>Counter Requests</u>													
Maps/Drawings	-	1	1	-	3	-	1	-	1	-	-	-	1
Lateral Permits	12	10	12	9	9	3	9	5	10	12	8	11	7
Policy Questions	-	1	-	2	3	-	2	-	1	-	-	3	4
Development Questions	11	13	12	12	9	5	6	6	5	10	9	13	10
Miscellaneous	-	1	1	2	2	2	0	-	1	1	-	-	0
TOTAL	23	26	26	25	26	10	18	11	18	23	17	27	22
<u>Initial Request (Referrals)</u>	15	20	13	13	17	16	21	20	15	18	14	16	24
<u>Connection Permits Issued</u>													
Residential Permits	16	3	3	5	16	9	1	1	2	-	4	5	2
Commercial Permits	3	2	3	5	5	1	-	2	-	1	-	1	2
Industrial Permits	-	-	-	-	-	-	-	-	-	-	-	-	-
TOTAL PERMITS	19	5	6	10	21	10	1	3	2	1	4	6	4
Residential Units	16	3	3	5	16	18	1	1	2	-	4	36	2
Commercial Units	102	174	3	5	8	1	-	2	-	1	-	1	2
TOTAL UNITS	118	177	6	10	24	19	1	3	2	1	4	37	4
<u>Annexations</u>													
Submitted	-	-	-	1	1	1	-	1	-	1	-	-	-
Acreage	-	-	-	0.60	11.60	5.79	-	158.20	-	4.90	-	-	-
<u>Plans Reviewed</u>													
<u>Subdivisions/Sites</u>													
First Submittal	14	4	10	10	18	9	10	10	9	2	5	6	5
Second Submittal	6	8	3	5	8	4	5	2	5	7	5	6	3
Third Submittal	2	2	2	3	3	4	2	1	1	1	5	3	4
<u>Building/Tenant Improvements</u>													
First Submittal	7	19	18	10	8	8	11	8	11	5	8	7	15
Second Submittal	1	7	6	8	6	1	5	6	-	4	2	5	2
Third Submittal	4	2	3	5	4	3	1	3	1	1	2	3	7
<u>Miscellaneous Plan Reviews</u>	-	-	-	-	-	-	-	-	-	-	-	-	-
TOTAL PLANS REVIEWED	34	42	42	41	47	29	34	30	27	20	27	30	36

INSPECTION WORKLOAD - MONTHLY

CATEGORY	Apr-18	May-18	Jun-18	Jul-18	Aug-18	Sep-18	Oct-18	Nov-18	Dec-18	Jan-19	Feb-19	Mar-19	Apr-19
<u>CONSTRUCTION</u>													
Locating Sewers	-	-	-	-	1	-	-	1	2	4	-	-	-
Permit Processing	-	-	-	-	-	-	-	-	-	-	-	-	-
Preconstruction Meetings	5	7	2	3	1	3	-	1	3	-	-	3	5
Inspections - Mains	2	4	-	2	6	11	1	-	1	-	1	1	-
Inspections - Manholes	16	25	12	-	6	76	76	21	30	49	75	19	18
Inspections - Laterals	17	25	15	7	13	3	8	3	28	18	23	31	21
Inspections - Cleanouts	26	43	7	3	2	2	6	8	37	31	39	39	46
Inspections - Review Video	2	-	17	1	-	2	-	1	2	-	2	2	1
Demo - Septic Tanks	-	-	-	-	-	-	-	-	-	-	-	-	-
Demo - Buildings	-	-	-	1	-	-	-	-	-	-	2	-	-
Update Record Drawings	-	-	-	-	-	-	-	-	-	-	-	-	-
TOTAL	68	104	53	17	29	97	91	35	103	102	142	95	91
<u>MISCELLANEOUS</u>													
Meter Readings	1	13	-	-	-	-	-	1	10	26	4	-	4
Washdown Facility Inspections	12	-	-	-	-	-	-	-	-	-	-	-	-
General Customer Assistance	11	28	21	40	27	31	50	25	30	34	41	13	20
City of Napa Water Discharge	-	-	-	-	-	-	-	-	-	-	-	-	-
TOTAL	24	41	21	40	27	31	50	26	40	60	45	13	24
<u>SPECIAL PROJECTS</u>													
	6	0	9	21	23	35	36	19	0	7	7	21	20

POLLUTION PREVENTION WORKLOAD - MONTHLY

CATEGORY	Apr-18	May-18	Jun-18	Jul-18	Aug-18	Sep-18	Oct-18	Nov-18	Dec-18	Jan-19	Feb-19	Mar-19	Apr-19
<u>Outreach Activities</u>													
Plant Tours Conducted	5	5	3	1	3	6	4	1	1	2	6	1	10
Presentations Made	1	5	0	1	0	2	10	0	0	1	0	2	3
Total Outreach Activities	6	10	3	2	3	8	14	1	1	3	6	3	13
<u>Inspections Conducted</u>													
Food Service Facilities	51	10	-	-	-	-	-	-	1	22	41	26	47
Auto Body & Car Wash	-	-	-	-	-	-	-	-	-	-	-	-	-
Other	-	-	-	-	-	-	-	1	-	-	-	-	-
Total Inspections	51	10	-	-	-	-	-	1	1	22	41	26	47
<u>Compliance Issues</u>													
NOVs Issued	2	1	3	-	3	1	2	1	-	1	1	1	1
NOEs Issued	1	-	1	-	1	-	1	1	-	-	1	-	-
Non-Compliant-FOG	-	-	-	-	-	-	-	-	-	1	-	-	-
Total Compliance Issues	3	1	4	-	4	1	3	2	-	2	2	1	1
<u>Pollution Prevention</u>													
Clothes Washer Rebates	-	8	21	-	-	-	-	29	23	6	8	-	19
Toilet Retrofit Rebates	-	-	-	-	-	-	-	-	-	-	-	-	-
Pharmaceuticals Diverted (in lbs)	66	-	74	90	65	61	68	56	-	124	-	102	-

RECYCLED WATER DELIVERIES - MONTHLY

	Acres	Apr-18	May-18	Jun-18	Jul-18	Aug-18	Sep-18	Oct-18	Nov-18	Dec-18	Jan-19	Feb-19	Mar-19	Apr-19
MONTHLY (MG)														
Water Sold														
Golf Courses	405.0	3.320	52.726	68.294	64.047	57.269	44.197	23.612	3.322	0.008	0.002	-	0.014	9.555
Cemeteries	57.1	0.385	3.183	3.643	4.903	4.920	4.142	3.239	2.872	0.690	0.380	-	0.273	1.494
Parks	18.5	-	0.823	0.949	1.051	0.846	0.527	0.050	0.611	-	0.002	-	-	0.020
Schools	21.0	0.242	1.727	2.151	2.122	2.044	1.571	1.231	0.745	0.060	0.098	0.043	0.041	0.251
Commerical	167.6	3.169	9.893	12.414	15.863	19.184	16.950	19.637	7.652	1.891	1.379	0.557	0.648	4.974
Vineyards	564.0	8.001	6.377	21.260	43.468	32.727	21.248	9.649	7.015	0.239	0.380	0.513	7.149	3.250
Trucked Water	175.0	0.880	0.143	0.737	0.666	0.637	0.399	0.289	0.403	0.033	0.007	0.020	0.017	0.110
Subtotal Sales	1,408.2	15.996	74.872	109.448	132.120	117.628	89.035	57.707	22.620	2.921	2.248	1.133	8.142	19.654
District Use														
Jameson	330.0	-	-	-	-	0.163	4.785	-	-	-	-	-	-	-
Somky	213.0	-	11.710	13.263	0.208	3.226	15.447	12.002	0.008	-	-	-	-	-
Fagundes/Airport	50.5	-	-	-	-	-	-	-	-	-	-	-	-	-
Subtotal District	593.5	-	11.710	13.263	0.208	3.389	20.232	12.002	0.008	-	-	-	-	-
TOTAL DELIVERED	2,001.7	15.996	86.582	122.711	132.327	121.016	109.266	69.709	22.628	2.921	2.248	1.133	8.142	19.654
ANNUAL (AF)														
Water Sold														
Golf Courses	405.0	1,093	1,091	1,097	1,067	1,063	1,035	1,025	1,019	1,000	1,000	981	972	991
Cemeteries	57.1	17	25	34	46	58	69	76	84	86	88	88	88	91
Parks	18.5	14	14	14	14	14	14	13	15	15	15	15	15	15
Schools	21.0	38	39	38	37	37	37	36	38	38	38	38	37	37
Commerical	167.6	335	318	303	298	303	309	327	337	338	343	339	335	341
Vineyards	564.0	423	427	460	534	540	550	529	545	545	546	531	485	470
Trucked Water	175.0	8	8	10	11	11	12	12	13	13	13	13	13	11
Subtotal Sales	1,408.2	1,928	1,923	1,955	2,008	2,026	2,025	2,018	2,051	2,035	2,042	2,003	1,945	1,956
District Use														
Jameson	330.0	143	143	143	121	64	15	15	15	15	15	15	15	15
Somky	213.0	223	240	244	210	178	166	171	171	171	171	171	171	171
Fagundes/Airport	50.5	-	-	-	-	-	-	-	-	-	-	-	-	-
Subtotal District	593.5	366	383	387	330	243	182	187	187	187	187	187	187	187
TOTAL DELIVERED	2,001.7	2,294	2,306	2,343	2,338	2,269	2,207	2,205	2,237	2,222	2,229	2,189	2,132	2,143

BIOSOLIDS HANDLING - MONTHLY

Site	Apr-18	May-18	Jun-18	Jul-18	Aug-18	Sep-18	Oct-18	Nov-18	Dec-18	Jan-19	Feb-19	Mar-19	Apr-19
<u>Land Applied by NSD</u>													
Somky						175							
Airport/Fagundes													
Jameson Canyon	-	-	232	229	184		147	13	-	-	-	-	-
Subtotal by NSD	-	-	232	229	184	175	147	13	-	-	-	-	-
<u>Land Applied by Contractor</u>													
Somky													
Airport/Fagundes													
Jameson Canyon													
Subtotal by Contractor	-	-	-	-	-	-	-	-	-	-	-	-	-
Total Land Applied	-	-	232	229	184	175	147	13	-	-	-	-	-
Off Site (Contractor)													
Total (tons)	-	-	232	229	184	175	147	13	-	-	-	-	-

COLLECTION SYSTEM MAINTENANCE - MONTHLY

CATEGORY	Apr-18	May-18	Jun-18	Jul-18	Aug-18	Sep-18	Oct-18	Nov-18	Dec-18	Jan-19	Feb-19	Mar-19	Apr-19
<u>Plugups</u>													
Total Calls	40	44	25	37	39	53	57	64	77	70	43	46	43
Business Hours	23	32	16	24	28	32	36	34	44	47	39	21	23
After Hours	17	12	9	9	11	21	21	30	33	23	4	25	20
District's	10	16	6	8	16	16	22	22	28	24	15	27	13
Property Owner's	30	28	19	29	23	36	35	41	49	46	28	20	30
Plugged Main Lines	1	1		2	1	2	-	1	1	-	-	4	1
Run Lateral w/Eel	120	142	173	168	165	61	12	80	25	85	66	77	100
<u>Cleaning (feet of sewer)</u>													
Vactor #1	36,507	47,937	41,767	48,278	69,132	63,968	80,207	38,882	43,194	23,544	21,454	14,808	30,224
Vactor #2	40,119	2,708	2,065	7,290	1,072	5,367	-	10,373	-	27,335	9,420	26,687	22,691
Hydro Rodder													
Total (feet)	76,625	50,645	43,832	55,568	70,204	69,335	80,207	49,254	43,194	50,879	30,875	41,495	52,916
<u>Cleaning Days</u>													
Total	27	21	20	19	22	22	22	20	19	20	16	21	21
Vactor #1	14	20	19	16	21	19	22	17	19	13	10	6	13
Vactor #2	13	1	1	3	1	3	-	3		7	6	15	8
Hydro Rodder													
<u>Feet/day</u>													
Total	2,850	2,400	2,200	2,900	3,200	3,150	3,650	2,450	2,250	2,550	1,950	2,000	2,500
Vactor #1	2,600	2,400	2,200	3,000	3,300	3,350	3,650	2,300	2,250	1,800	2,150	2,450	2,300
Vactor #2	3,100	2,700	2,050	2,450	1,050	1,800		3,450		3,900	1,550	1,800	2,850
Hydro Rodder													
<u>Video Inspections</u>													
Mains (feet)	18,530	26,140	18,248	18,188	27,761	18,443	31,889	17,526	12,509	14,335	5,812	13,050	15,089
Laterals (each)	179	197	223	266	234	232	297	201	138	175	133	144	204
<u>Construction (each)</u>													
Cleanouts	6	10	8	27	25	6	5	50	1	18	3	17	15
Laterals	10	24	10	9	8	8	4	4	15	6	3	3	4
Mains							1		-	-		1	
Manholes	1	2			2	1	1		-	-		1	
Other	3												
<u>USA Markings</u>													
Regular (w/in 2 days)	280	282	277	397	296	286	378	159	159	171	224	338	327
Emergency (w/in 2 hours)	31	37	16	8	12	15	15	32	12	24	15	22	20

WASTEWATER PLANT OPERATIONS DATA - MONTHLY

CATEGORY	Units	Apr-18	May-18	Jun-18	Jul-18	Aug-18	Sep-18	Oct-18	Nov-18	Dec-18	Jan-19	Feb-19	Mar-19	Apr-19
FLOWES		30	31	30	31	31	30	31	30	31	31	28	31	30
Influent	MG	321.5	216.7	191.0	189.8	186.1	176.1	180.0	208.8	257.6	407.2	542.7	465.3	261.4
Average Day	MGD	10.7	7.0	6.4	6.1	6.0	5.9	5.8	7.0	8.3	13.1	19.4	15.0	8.7
Maximum Day	Date	8-Apr	1-May	4-Jun	1-Jul	19-Aug	16-Sep	2-Oct	29-Nov	1-Dec	17-Jan	14-Feb	6-Mar	1-Apr
Maximum Day Flow	MG	29.7	7.7	6.6	6.3	6.3	8.2	6.2	16.5	12.6	31.7	44.8	26.3	11.7
Minimum Day	Date	30-Apr	31-May	27-Jun	6-Jul	22-Aug	21-Sep	31-Oct	1-Nov	13-Dec	3-Jan	1-Feb	19-Mar	30-Apr
Minimum Day Flow	MG	7.7	6.7	6.1	6.0	5.5	5.7	5.4	5.5	6.6	7.0	8.8	9.7	7.4
Effluent	MG	342.1	95.8	134.0	133.0	124.4	104.7	68.1	289.9	384.2	497.1	507.1	618.1	455.7
River Discharge	MG	319.8	-	-	-	-	-	-	263.8	378.9	491.6	507.1	618.1	424.4
Recycled Flow	MG	20.2	95.8	134.0	133.0	124.4	104.7	68.1	26.1	5.2	5.5	-	8.5	25.4
BIOSOLIDS	Tons	605	719	760	798	775	943	745	572	767	700	451	413	575
Wet Tons Generated from Pond	Tons													
Wet Tons Generated from Plant	Tons	605	719	760	798	775	943	745	572	767	700	451	413	575
% Solids Liquid	%													
% Solids Cake	%													
% Solids Land Application	%													
Wet Tons Hauled Offsite	Tons													
POLYMER USE	Gallons	2,365	3,816	2,636	1,732	1,936	1,915	4,044	8,169	1,155	868	1,046	4,557	7,851
Pond Pre-Flocculators	Gallons	282	-	-	-	-	-	59	2,293	-	-	-	2,668	4,704
Flocculator Polymer 1	Gallons				-	-	-	-	-	-	-	-	-	-
Flocculator Polymer 2	Gallons	452	-	-	-	-	-	34	784	294	-	-	974	755
Filter Polymer 1	Gallons	1,015	2,850	1,677	824	1,361	1,259	2,944	4,503		178	404	460	1,584
Filter Polymer 2	Gallons	-	-	-	-	-	-	-	-		-	-	-	-
Belt Presses	Gallons	617	966	959	908	575	656	1,007	589	788	690	642	455	808
ENERGY														
Total Electricity Used	MWH	777	748	813	775	798	765	714	785	684	663	670	864	840
Purchased from PGE	MWH	357	281	270	279	361	331	366	448	342	353	374	504	423
Produced from Co-Gen	MWH	245	282	266	286	258	272	249	254	265	235	207	215	244
Percent Produced	%	32%	38%	33%	37%	32%	36%	35%	32%	39%	35%	31%	25%	29%
Purchased from Solar	MWH	175	200	227	210	179	162	99	83	77	75	89	145	173
Percent Produced		22%	27%	28%	27%	22%	21%	14%	11%	11%	11%	13%	17%	21%
Purchased Natural Gas	Therms	24	22	63	116	68	34	532	516	341	158	407	404	227

WASTEWATER PLANT MAINTENANCE and LABORATORY DATA - MONTHLY

CATEGORY	Apr-18	May-18	Jun-18	Jul-18	Aug-18	Sep-18	Oct-18	Nov-18	Dec-18	Jan-19	Feb-19	Mar-19	Apr-19
<u>Scheduled</u>													
Old	12	6	8	9	13	31	20	21	10	6	5	11	10
New	95	89	101	95	87	83	104	78	97	100	82	92	109
Completed	101	87	100	91	69	94	103	89	101	101	76	93	104
New Balance	6	8	9	13	31	20	21	10	6	5	11	10	15
<u>Unscheduled</u>													
Old	30	36	30	27	29	38	32	36	30	24	23	23	23
New	25	14	21	23	30	11	38	17	13	19	12	20	15
Completed	19	20	24	21	21	17	34	23	19	20	12	20	16
New Balance	36	30	27	29	38	32	36	30	24	23	23	23	22
<u>Total Work Orders</u>													
Old	42	42	38	36	42	69	52	57	40	30	28	34	33
New	120	103	122	118	117	94	142	95	110	119	94	112	124
Completed	121	107	125	112	90	111	137	112	120	120	88	112	120
New Balance	42	38	36	42	69	52	57	40	30	28	34	33	37
<u>LAB ANALYSES</u>													
<u>Sample Type</u>													
Regulatory	200	188	146	139	182	132	129	195	175	169	117	164	155
Process Control	1,103	796	871	917	890	926	486	1,154	1,087	1,155	1,111	1,199	1,195
Special Request	1	6	34	2	-	-	13	-	2	-	8	2	-
Quality Control/Assurance	936	489	500	483	622	401	328	1,128	705	776	639	754	1,447
TOTAL	2,240	1,479	1,551	1,541	1,694	1,459	956	2,477	1,969	2,100	1,875	2,119	2,797

**Summary of NSD Capital Project Status
through 04-30-19**

Proj #	Description	FY 18/19 Budget	FY 17/18 Carryovers	Adj.	Final FY 18/19 Budget	Encumbrance	Costs Paid to Date	Budget Remaining	% Budget Expended
	<u>COLLECTION SYSTEM</u>								
13701	Main Line Sewer Rehabilitation	95,000			95,000	6,750	29,722	58,528	31%
13702	Manhole Raising/Rehabilitation	428,500			428,500	-	292,665	135,835	68%
13703	Lateral Replacement/Rehabilitation	77,100			77,100	4,693	72,332	76	94%
13704	Cleanouts Installation/Rehabilitation	93,200			93,200	-	63,966	29,234	69%
13705	Inflow & Infiltration (I&I) Reduction Program	214,200			214,200	100,850	30,573	82,777	14%
14703	Browns Valley Rd & First St	5,075,000			5,075,000	3,153	241,401	4,830,447	5%
17704	Infltrtn Rehab - SSMH/PL (CI-)	-	73,900	(40,000)	33,900	-	8,400	25,500	25%
17708	Basin G - I&I Reduction #1	-	200,000		200,000	-	153,759	46,241	77%
18701	I&I Smoke Testing	-	99,750		99,750	6,629	64,912	28,210	65%
18702	Collection System Asset Management Software	275,000	349,550		624,550	367,754	131,818	124,977	21%
18703	Upper Lateral Rehab - Basin L (Pilot) #3	-	5,000		5,000	-	414	4,586	8%
18705	Sewer System Inflow/Infiltration 2018	2,600,000	2,298,750	(20,000)	4,878,750	7,633	4,307,996	563,121	88%
18706	Sewer System Inflow/Infiltration 2019	2,321,100	13,900	335,850	2,670,850	1,681,596	396,343	592,911	15%
19701	66-inch Trunk Rehabilitation (Kaiser to IPS)	1,400,000			1,400,000	36,150	177,205	1,186,645	13%
19702	72-inch Trunk Construction (Kaiser to IPS)	1,000,000		(1,000,000)	-	-	-	-	-
19703	2020 Collection System Rehabilitation	20,000			20,000	-	2,726	17,274	14%
19727	Collection System Master Plan	-		1,000,000	1,000,000	243,849	176,421	579,730	18%
	<u>COLLECTION SYSTEM - EQUIPMENT</u>								
18708	Manhole - Smart Covers (4)	-	15,000		15,000	-	14,978	22	100%
18738	Combination Truck Veh #529B	-	3,600		3,600	-	3,600	-	100%
19704	Vehicle 180 - Ford F150 - USA Truck	35,400			35,400	-	35,400	-	100%
19729	Replace Coll Veh #166	-		40,000	40,000	-	35,584	4,416	89%
19730	CCTV Camera Transporter	-		20,000	20,000	-	19,637	363	98%
	<u>LIFT STATIONS</u>								
17711	West Napa PS - Rehab	5,200,000			5,200,000	333,992	556,196	4,309,812	11%
19705	Stonecrest PS Pump Rebuild	45,000			45,000	25,106	4,894	15,000	11%
	<u>TREATMENT</u>								
13745	Pond 1 Dredge	600,000		(350,000)	250,000	14,680	11,240	224,080	4%
	<u>TREATMENT - EQUIPMENT</u>								
13735	Dual Fuel Boiler Burner	-	155,300		155,300	131,630	-	23,670	-
15711	Rotork Actuator Replacement	-	7,600		7,600	-	-	7,600	-

**Summary of NSD Capital Project Status
through 04-30-19**

Proj #	Description	FY 18/19 Budget	FY 17/18 Carryovers	Adj.	Final FY 18/19 Budget	Encumbrance	Costs Paid to Date	Budget Remaining	% Budget Expended
15713	Aeration Basin Instrmntn/Ctrl	-	6,750		6,750	-	-	6,750	-
16712	Main - Primary Clarifier Mech/Struct Rehabilitation	150,000		90,000	240,000	88,403	49,485	102,112	21%
17713	Secondary PS VFD Rplcmnt (3)	57,400		(57,400)	-	-	-	-	-
17715	Turbidimeters (7) Tertiary Rplcmnts	-	16,000		16,000	-	-	16,000	-
18711	3W Strainer	-	52,750		52,750	-	28,374	24,376	54%
18715	Muffle Furnace - Replacement	-	5,000		5,000	-	-	5,000	-
18716	Rotork Actuator Replacement	-	67,200	18,600	85,800	-	79,396	6,404	93%
18719	Filter Flow Control - Rotork Valves	-	46,600		46,600	-	36,668	9,932	79%
18720	Neuros Blowers Rebuild	64,300			64,300	-	-	64,300	-
18722	FOG Station Water Heater	-	5,000		5,000	-	-	5,000	-
18725	Belt Press Hydraulic Actuator Replace	-	20,000		20,000	-	18,764	1,236	94%
18740	Main - Chemical Storage Building Piping Repair	250,000	25,000	1,000,000	1,275,000	361,586	220,310	693,104	17%
19706	WWTP MP - 3W System Improvements Phase 2	300,000			300,000	-	3,859	296,141	1%
19707	Portable Pumps 10-inch (2)	172,100		42,400	214,500	-	214,379	121	100%
19708	Main - Rotork Actuator Replacement	95,000			95,000	-	-	95,000	-
19709	Main - Polymer Tank (3) Replacement	10,000			10,000	-	-	10,000	-
19710	Main - 12kV Redundant Line	120,000			120,000	-	787	119,213	1%
19711	Main - CCB Coating - E&W Channels	50,000		(50,000)	-	-	-	-	-
19712	Main - Utility Generator Power Transition	75,000		(40,000)	35,000	-	-	35,000	-
19713	Main - Cogen Hot Water to FOG Pad	50,000			50,000	-	-	50,000	-
19714	Main - Ventilation System Expansion Boots	50,000			50,000	-	28,740	21,260	57%
19715	Main - ARV Replacement	30,000			30,000	-	29,299	701	98%
19716	Main - P4PS Pump #3 Rebuild	40,000			40,000	-	35,523	4,477	89%
19728	Lab Sampler	-		8,000	8,000	-	7,298	702	91%
	TREATMENT - STRUCTURES								
17726	Headworks Equipment Rehab/Replacment	1,900,000	9,250		1,909,250	1,585,271	226,169	97,810	12%
18736	Treatment Plant Project 2018	2,100,000	854,000		2,954,000	64,263	2,751,277	138,460	93%
19717	WWTP MP - Pond Transfer Structures 2 to 3	5,000		350,000	355,000	9,649	58,347	287,004	16%
	SCADA								
18729	SCADA MP Project #1 - Network Monitoring	-	48,700		48,700	-	2,501	46,199	5%
19718	SCADA MP Phase 5 Security Study	250,000			250,000	65,701	131,101	53,198	52%
	RECYCLING - DISTRICT								
16716	Line Recycled Water Reservoir	-	100,000		100,000	2,125	82,966	14,909	83%

**Summary of NSD Capital Project Status
through 04-30-19**

Proj #	Description	FY 18/19 Budget	FY 17/18 Carryovers	Adj.	Final FY 18/19 Budget	Encumbrance	Costs Paid to Date	Budget Remaining	% Budget Expended
18730	Jameson 24" Flow Meter Rehab	-	6,200		6,200	-	-	6,200	-
18731	Coombsville Truck Fill Station	375,000	65,050		440,050	338,752	91,686	9,612	21%
19719	24-inch Valve Replacement - Kirkland Line	5,000			5,000	-	-	5,000	-
19720	Jameson PS VFD	68,900			68,900	-	-	68,900	-
19721	Soscol RW Pump Replacement/Rehab	150,000			150,000	91,651	-	58,349	-
19722	Vehicle 723/720 - Attachments/Implements	28,700			28,700	-	25,783	2,917	90%
	<u>RECYCLING - EXPANSION</u>								
13727	North Bay Wate Reuse Project	150,000			150,000	-	97,014	52,986	65%
	<u>OTHER</u>								
13729	Development Technical Support	248,300		120,100	368,400	-	251,398	117,002	68%
19723	AV System Replacement - Conference Rooms	20,000			20,000	-	-	20,000	-
19724	Fence Repair - District Wide	25,000		7,000	32,000	18,162	12,540	1,298	39%
19725	Vehicle 011 - CSET Trailer	23,700			23,700	13,700	-	10,000	-
19726	Vehicle 607 - Electrical Hybrid Vehicle	42,800			42,800	-	38,984	3,816	91%
GRAND TOTAL ALL PROJECTS		\$26,385,700	\$4,549,850	\$1,474,550	\$32,410,100	\$5,603,727	\$11,354,831	\$15,451,544	35%

This page intentionally left blank.