

SITE LANDSCAPE NOTES:

1. In order to minimize Landscape Irrigation, we are proposing an all California Native plant palette, combined with two kinds of planting/irrigation zones: an un-irrigated zone for the majority of the site, and a drip-irrigated zone adjacent to the building and automobile parking.



Un-Irrigated Landscape - this zone will be seeded with California Native grasses selected for their low height, and ability to naturalize in this part of the State. Within this zone, California Native trees will also be planted, but in clusters designed to allow for fire control mowing of the Native grasses. 174,461 sq. ft. (4 acres).

Seeding and tree planting will take place in late October or early November, after at least the first 1/2" of rain.



Irrigated Landscape - this zone will be irrigated with in-line drip and planted with California Native trees, shrubs and ground covers. 19,797 sq. ft. (0.5 acres).

Irrigation equipment locations will be shown on the Construction Drawings. The controller will be a "smart", "weather-based", "E/T" controller.

2. Tree clusters in the un-irrigated areas will be mulched to remove competition for water from grasses and to remove the need for mowing within the clusters.

3. Plant materials will be California Native trees, shrubs and ground covers. All will be "Low" or "Very Low" water use according to WUCOLS 2014 - except for two "Medium" water use trees shown in the water quality basins (these can withstand winter inundation).

4. Grasses are California Natives mixed specifically for water quality swales and for uplands. Water quality swales will not be irrigated (see above for fall seeding and planting).

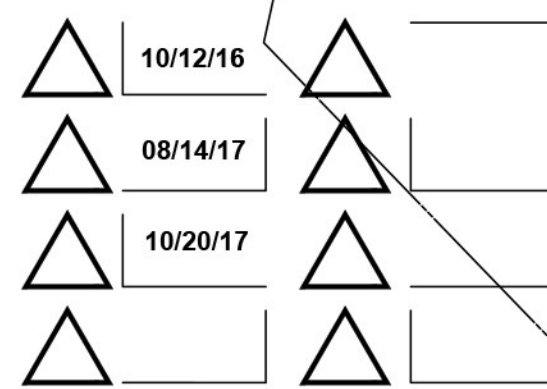


DEERING DESIGN

SITE PLANNING
URBAN DESIGN
LANDSCAPE ARCHITECTURE

26395 Carmelo St.
Carmel, CA 93923
(530) 756-9356
paul@deeringdesign.com
www.deeringdesign.com
Calif. LA #1976

DATES

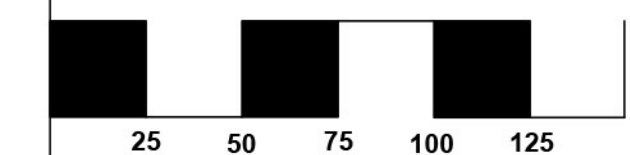


NOVA WAREHOUSE

Devlin Road
Napa County, California

For Ronald Fedrick

SCALE: 1"=50'



NORTH



LANDSCAPE MASTER PLAN

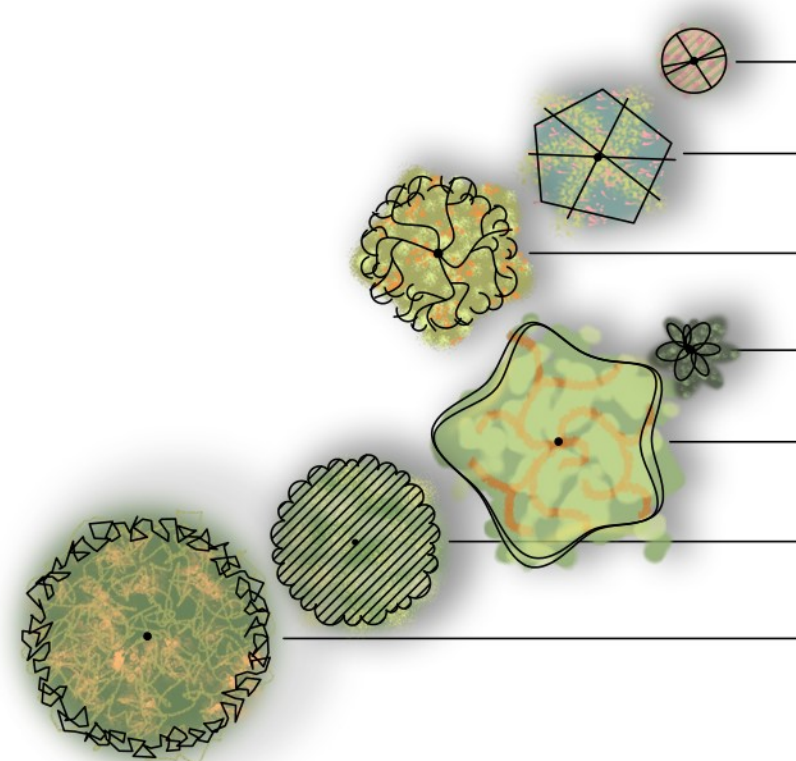
SHEET NO.

L-1

OF
2

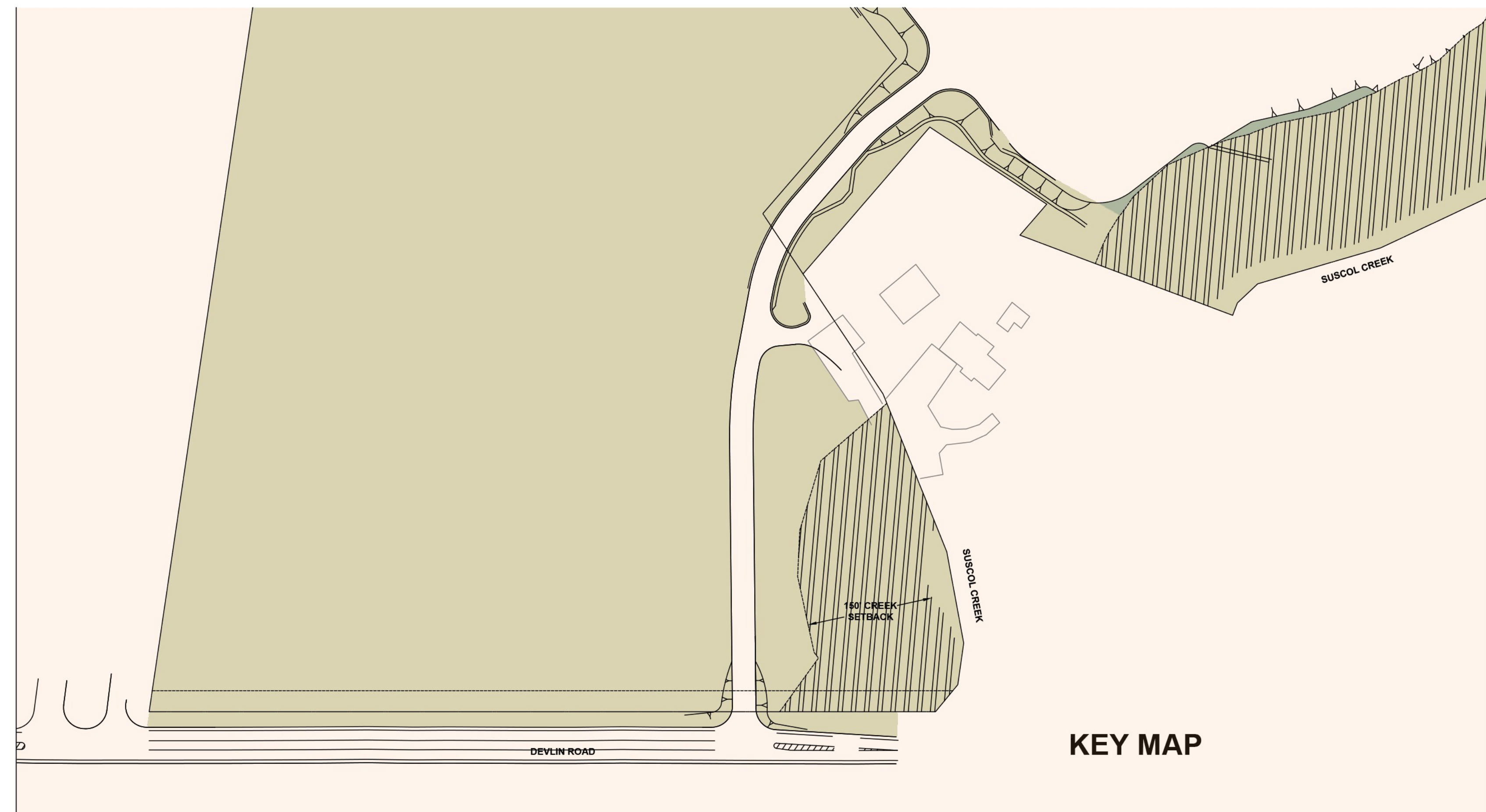
PLANT MATERIALS

KEY	SIZE	BOTANICAL NAME	COMMON NAME	WUCOLS
TREES				
CER	5 gal	<i>Cercis occidentalis</i>	Western Redbud	Very Low
CHI	15 gal	<i>Chilopsis linearis</i>	Desert Willow	Very Low
LYO	15 gal	<i>Lyonothamnus floribundus</i>	Catalina Ironwood	Low
MYR	5 gal	<i>Myrica californica</i>	Pacific Wax Myrtle	Medium
P.R.	5 gal	<i>Platanus racemosa</i>	California Sycamore	Medium
Q.A.	15 gal	<i>Quercus agrifolia</i>	Coast Live Oak	Very Low
Q.L.	15 gal	<i>Quercus lobata</i>	Valley Oak	Low



SHRUBS & GROUNDCOVERS

A.M.	1 gal	<i>Achillea millefolium</i>	Common Yarrow
A.P.	1 gal	<i>Achillea</i> 'Prism Mix'	Mixed Color Yarrow
A.D.	5 gal	<i>Arctostaphylos</i> d. 'Howard McMinn'	Vine Hill Manzanita
BAC	1 gal	<i>Baccharis pilularis</i> 'Pigeon Point'	Dwarf Coyote Brush
CAL	5 gal	<i>Calycanthus occidentalis</i>	Western Spice Bush
CAR	5 gal	<i>Carpenteria californica</i>	Bush anemone
CYP	5 gal	<i>Ceanothus</i> g.h. 'Yankee Point'	Carmel Ceanothus
EPI	1 gla	<i>Epilobium canum</i>	California Fuschia
ERI	1 gal	<i>Erigeron karvinskianus</i>	Santa Barbara Daisy
E.G.	1 gal	<i>Eriogonum Grande</i> 'Rubescens'	Red Buckwheat
E.F.	1 gal	<i>Eriogonum fasciculatum</i>	Flattop Buckwheat
FRE	5 gal	<i>Fremontodendron</i> 'San Gabriel'	Flannel Bush
HET	5 gal	<i>Heteromeles arbutifolia</i>	Toyon
IRI	1 gal	<i>Iris douglasiana</i>	Pacific Coast Iris
LYM	1 gal	<i>Lymus condensatus</i> 'Canyon Prince'	C. P. Giant Wild Rye
M.A.	1 gal	<i>Mimulus auranticus</i>	Sitcky Monkeyflower
M. C.	1 gal	<i>Mimulus cardinalis</i>	Scarlet Monkeyflower
MUH	1 gal	<i>Muhlenbergia rigens</i>	Deer Grass
PEN	1 gal	<i>Penstemon</i> h. 'Margarita BOP'	Foothill Penstemon
RHA	5 gal	<i>Rhamnus</i> Cal. 'Eve Case'	Coffeeberry
RHU	5 gal	<i>Rhus integrifolia</i>	Lemonade Berry
SAL	1 gal	<i>Salvia</i> 'Poza Blue'	Pozo Blue Sage



KEY MAP

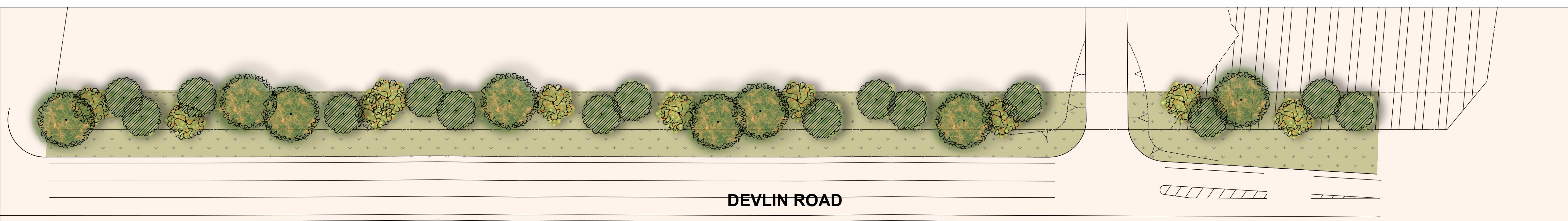
LOW GROWING NATIVE GRASSES - AT WATER QUALITY FEATURES



- | | |
|-----------------------------|---------------------------|
| <i>Festuca californica</i> | <i>California Fescue</i> |
| <i>Festuca idahoensis</i> | <i>Idaho Fescue</i> |
| <i>Festuca rubra</i> Molate | <i>Molate Blue Fescue</i> |
| <i>Juncus patens</i> | <i>Blue Pacific Rush</i> |
| <i>Leymus triticoides</i> | <i>Creeping Wildrye</i> |

DEVLIN ROAD STREETScape NOTES:

- Planting consists of California Native Trees and seeded Native Grasses.
- This streetscape planting will not be irrigated. The trees and grasses selected will survive without irrigation if planted in the fall. When the adjacent parcel is developed in the future, a permanent irrigation system can be installed (if needed), along with shrubs and groundcovers for screening or other requirements for the development of that parcel.
- Streetscape planting, including within the Creek Setback, will be with California Native plants only.



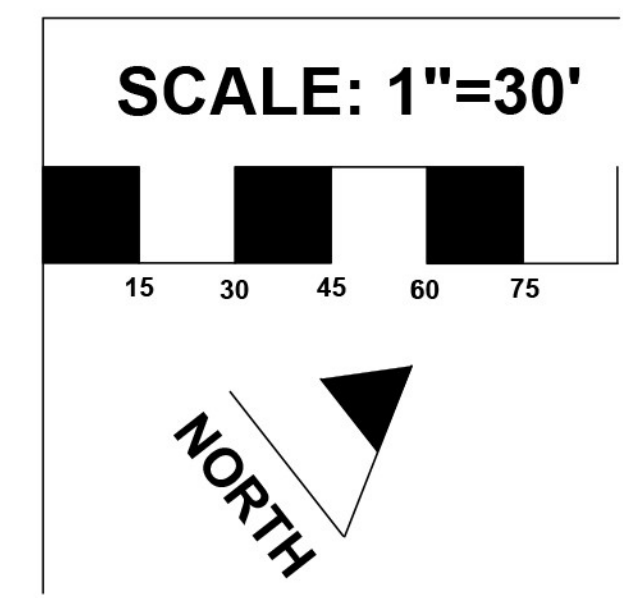
DEVLIN ROAD

DEERING DESIGN
 SITE PLANNING
 URBAN DESIGN
 LANDSCAPE ARCHITECTURE
 26395 Carmelo St.
 Carmel, CA 93923
 (530) 756-9356
 paul@deeringdesign.com
 www.deeringdesign.com
 Calif. LA #1976

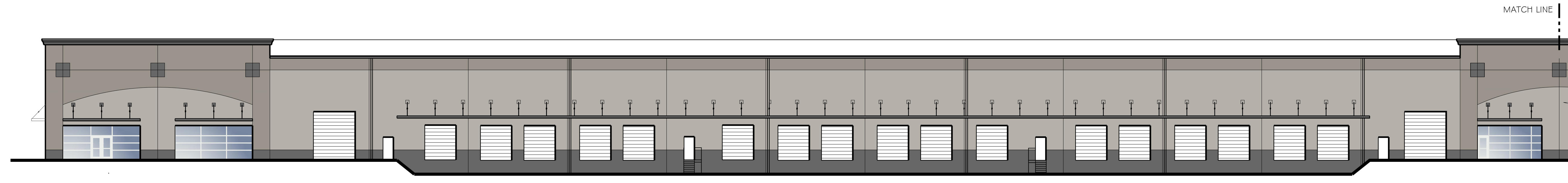
DATES

△	10/12/16	△	
△	08/14/17	△	
△	10/20/17	△	
△		△	

NOVA WAREHOUSE
 Devlin Road
 Napa County, California
 For Ronald Fedrick



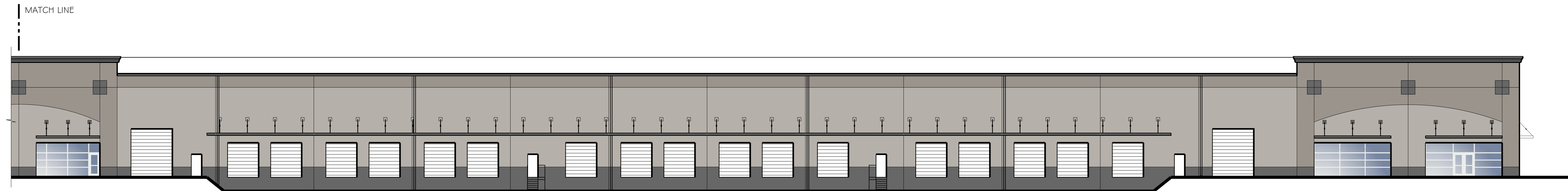
LANDSCAPE MASTER PLAN
 SHEET NO.
L-2 OF 2



EAST ELEVATION

SOUTH END

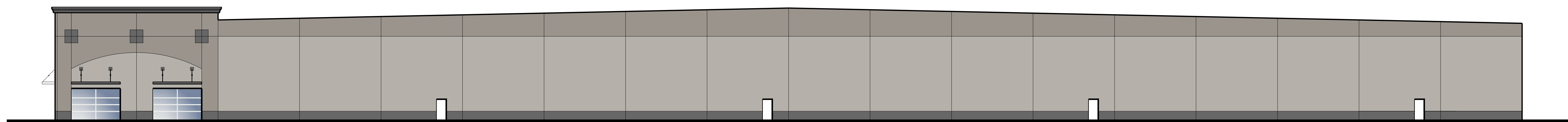
1/8" = 1'-0"



EAST ELEVATION

NORTH END

1/8" = 1'-0"



NORTH ELEVATION

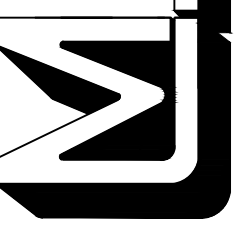
1/8" = 1'-0"

COLOR LEGEND

- GLIDDEN PROFESSIONAL A1858 - WOOD SMOKE
- GLIDDEN PROFESSIONAL A1781 - WAYSIDE INN
- GLIDDEN PROFESSIONAL A1832 - MANSARD STONE

REVISIONS	BY

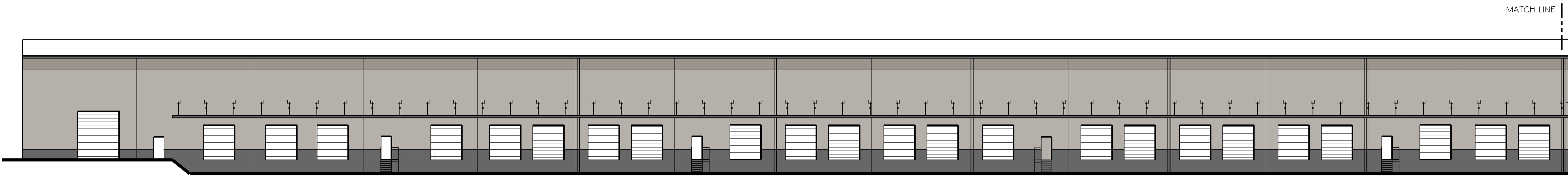
Leo McClade & associates, inc.
 3417 Arden Way Sacramento, CA 95825 (916) 488-0380



COLORED
ELEVATIONS

PROPOSED BUILDING
 FOR: NOVA BUSINESS PARK LLC
 DEVLIN ROAD
 NAPA COUNTY, CALIFORNIA

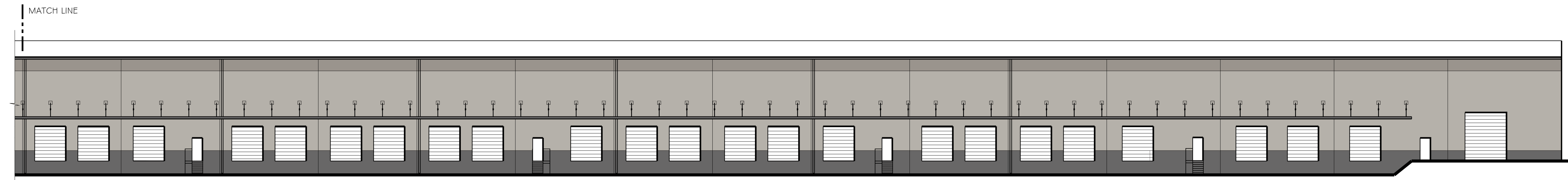
Date 12-12-16
 Scale AS NOTED
 Drawn R.J.
 Job 16-55-N45
 Sheet
A8



WEST ELEVATION

NORTH END

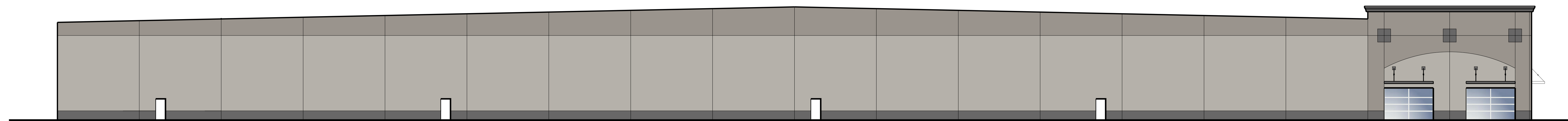
1/8" = 1'-0"



WEST ELEVATION

SOUTH END

1/8" = 1'-0"



SOUTH ELEVATION

1/8" = 1'-0"

COLOR LEGEND

- GLIDDEN PROFESSIONAL A1858 - WOOD SMOKE
- GLIDDEN PROFESSIONAL A1781 - WAYSIDE INN
- GLIDDEN PROFESSIONAL A1832 - MANSARD STONE

REVISIONS	BY

Leo McClade & associates, inc.
3417 Arden Way Sacramento, CA 95825 (916) 488-6380

COLORED ELEVATIONS

PROPOSED BUILDING
FOR: NOVA BUSINESS PARK LLC
DEVLIN ROAD
NAPA COUNTY, CALIFORNIA

Date 12-12-16
Scale AS NOTED
Drawn R.J.
Job 16-55-N45
Sheet

A9