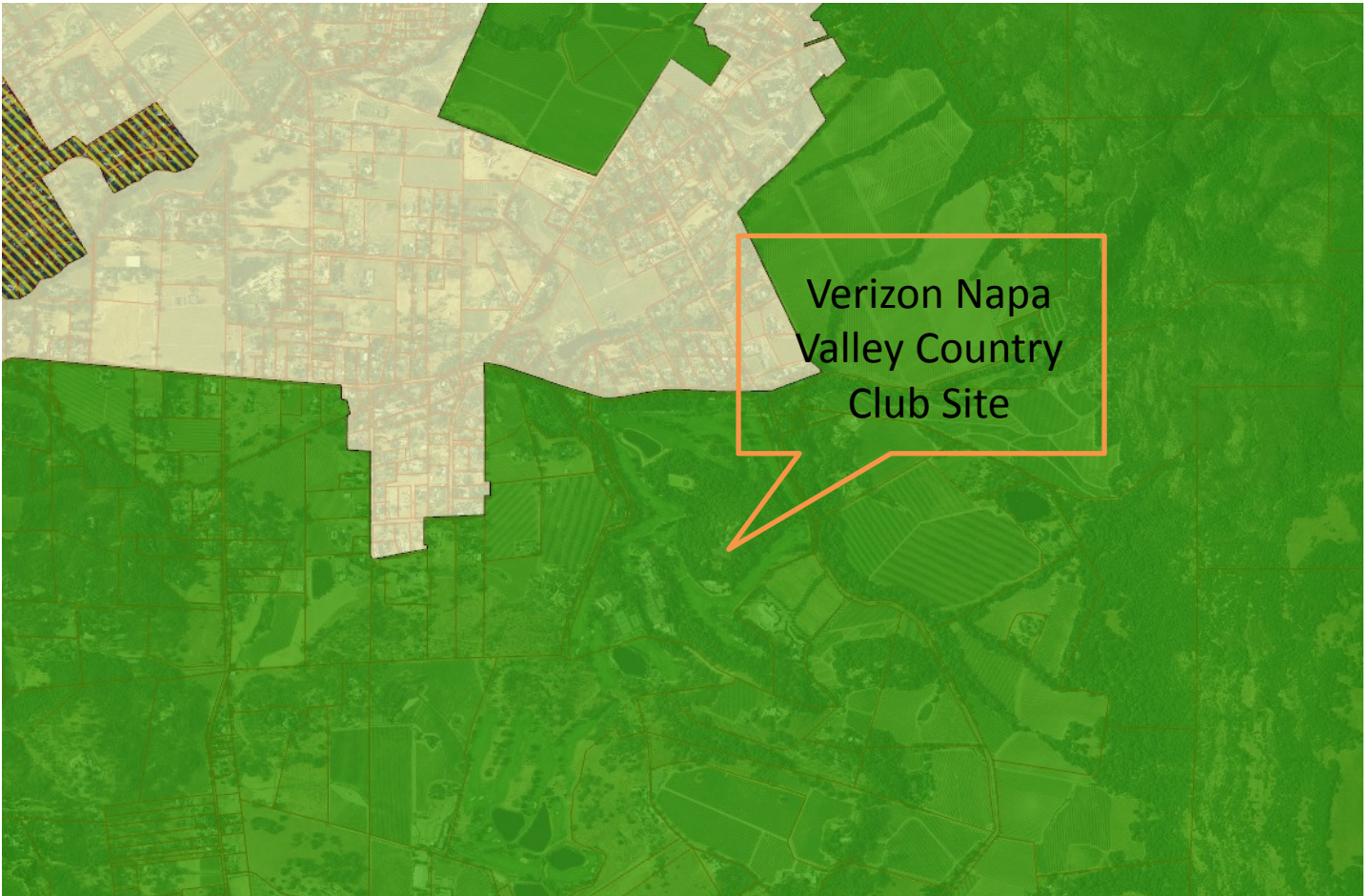


“E”

Graphics

NAPA COUNTY LAND USE PLAN 2008 – 2030



LEGEND



URBANIZED OR NON-AGRICULTURAL

- Study Area
- Cities
- Urban Residential*
- Rural Residential*
- Industrial
- Public-Institutional
- Napa Pipe Mixed Use

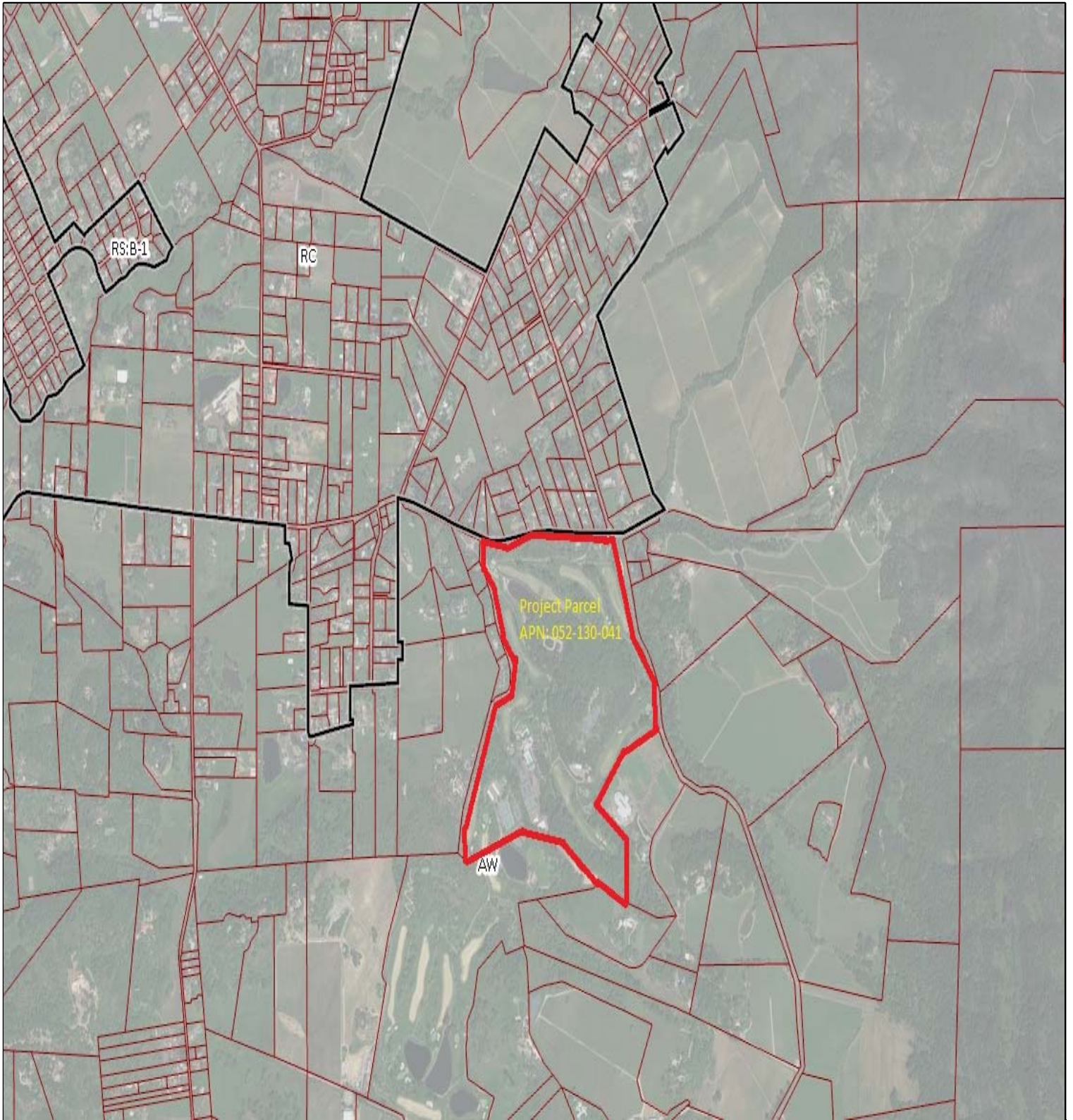
OPEN SPACE

- Agriculture, Watershed & Open Space
- Agricultural Resource

TRANSPORTATION

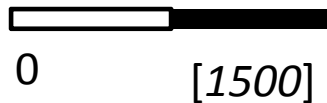
- Mineral Resource
- Limited Access Highway
- American Canyon ULL
- City of Napa RUL
- Landfill - General Plan
- Road
- Airport
- Railroad
- Airport Clear Zone

* See Action Item AG/LU-114.1 regarding agriculturally zoned areas within these land use designations



LEGEND

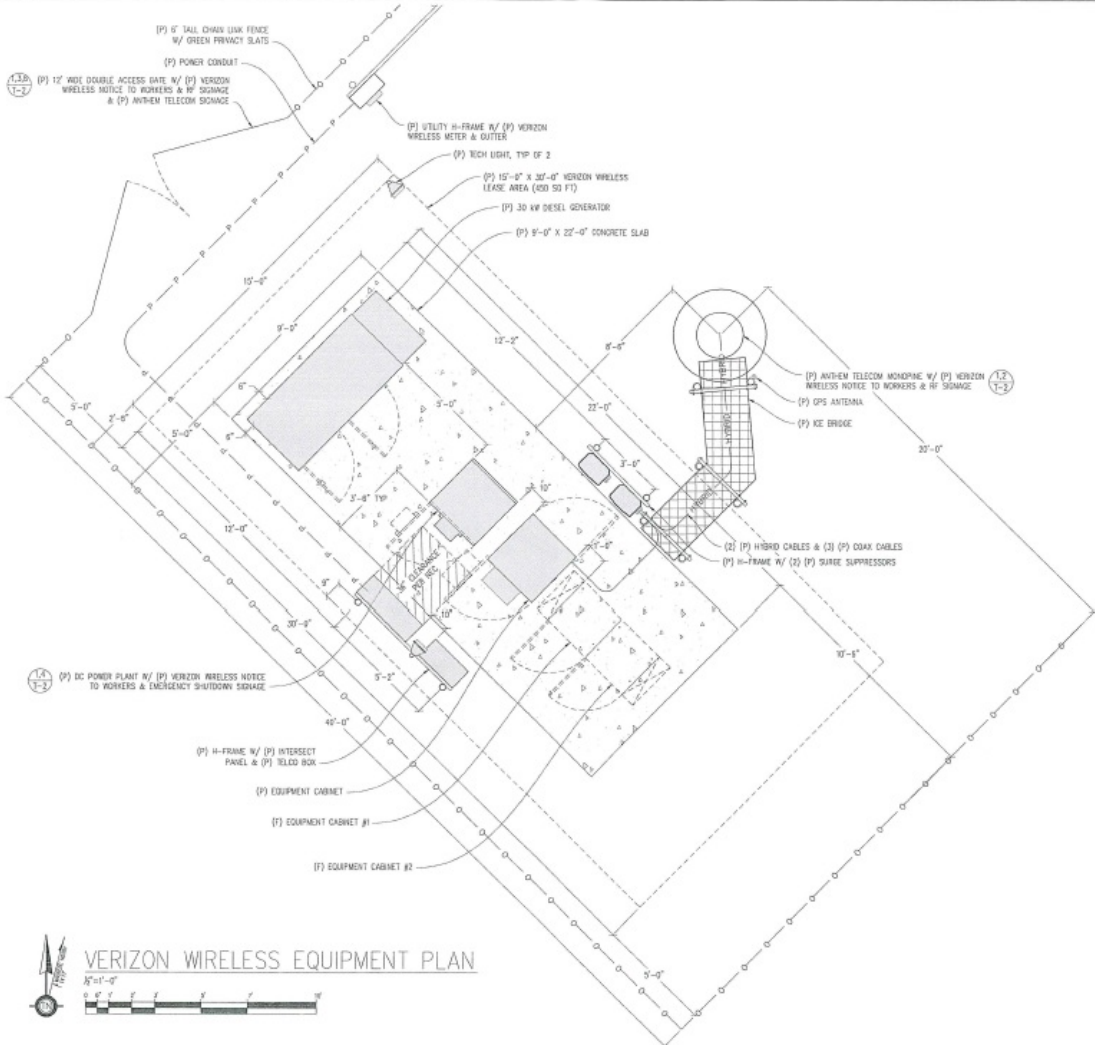
- Zoning
- Parcels



ZONING MAP



Existing Conditions



(P) 12' WIDE DOUBLE ACCESS GATE W/ (P) VERIZON WIRELESS NOTICE TO WORKERS & HF STORAGE & (P) ANTHEM TELECOM STORAGE

(P) 6' TALL CHAIN LINK FENCE W/ GREEN PRIVACY SLATS
(P) PONDING CONDUIT

(P) UTILITY H-FRAME W/ (P) VERIZON WIRELESS METER & GUTTER

(P) TICH LIGHT, TYP OF 2

(P) 15'-0" X 25'-0" VERIZON WIRELESS LEASE AREA (400 SQ FT)

(P) 30 kW DIESEL GENERATOR

(P) 9'-0" X 22'-0" CONCRETE SLAB

(P) ANTHEM TELECOM MONORAIL W/ (P) VERIZON WIRELESS NOTICE TO WORKERS & HF STORAGE

(P) GPS ANTENNA

(P) KE BRIDGE

(2) (P) HYBRID CABLES & (3) (P) COAX CABLES
(P) H-FRAME W/ (P) SURGE SUPPRESSORS

(P) DC POWER PLANT W/ (P) VERIZON WIRELESS NOTICE TO WORKERS & EMERGENCY SHUTDOWN STORAGE

(P) H-FRAME W/ (P) INTERSECT PANEL & (P) RELO BOX

(P) EQUIPMENT CABINET

(P) EQUIPMENT CABINET #1

(P) EQUIPMENT CABINET #2



VERIZON WIRELESS EQUIPMENT PLAN

1/8" = 1'-0"

NAPA VALLEY COUNTRY CLUB
2081 DAGUERRE BLVD
NAPA, CA 94956

ISSUE STATUS

DATE	DESCRIPTION	BY
09/07/17	CLIENT REV	L.M.
09/26/17	CLIENT REV	L.M.
09/27/17	CLIENT REV	L.M.
10/17/17	CLIENT REV	L.M.
10/27/17	CLIENT REV	L.M.
10/28/17	CLIENT REV	L.M.
11/09/17	30 WORK	L.M.

DRAWN BY: I. MAY
CHECKED BY: N. PAPACHRISTO
APPROVED BY: -
DATE: 11/07/17

Streamline Engineering
CENTRO DESIGN GROUP
1460 BISHOP COLLEGE BLVD, SUITE 200, NAPA, CA 94956
EMAIL: LARRY@STREAMLINEENR.COM FAX: 707.254.8801

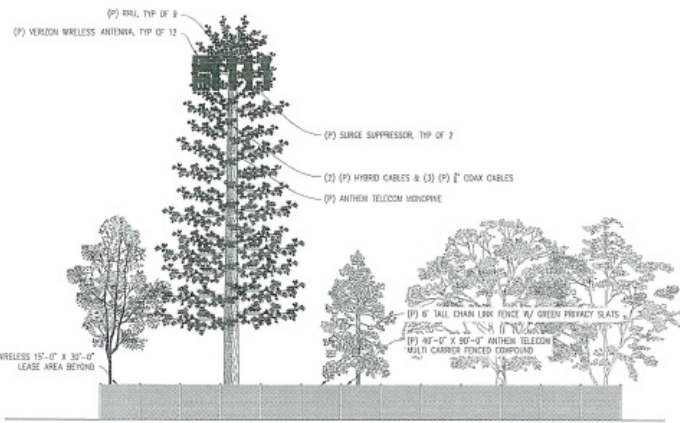
**PRELIMINARY:
NOT FOR CONSTRUCTION**
KEVIN R. SCHRIBER
54459

ANTHEM TELECOM
158 2ND STREET
SAN FRANCISCO, CA 94105

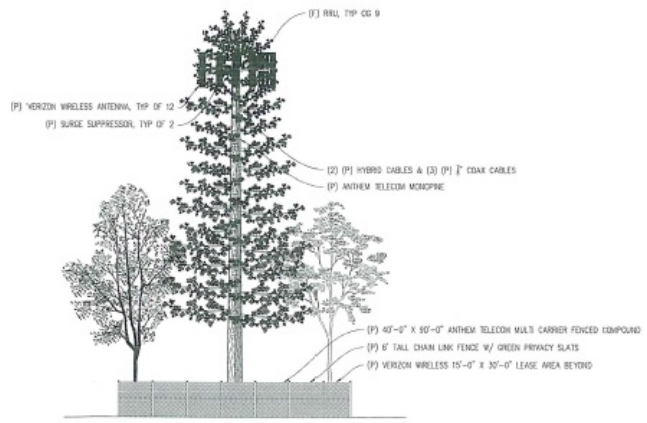
SHEET TITLE:
VERIZON WIRELESS EQUIPMENT PLAN
SHEET NUMBER:
A-3

- TOP OF (P) MONOPINE BRANCHES
±171'-0" A.G.L.
- TOP OF (P) ANTHEM TELECOM MONOPINE
±185'-0" A.G.L.
- RAD. CENTER OF (P) VERIZON WIRELESS ANTENNAS
±180'-0" A.G.L.
- RAD. CENTER OF (F) CARRIER ANTENNAS
±150'-0" A.G.L.
- RAD. CENTER OF (F) CARRIER ANTENNAS
±40'-0" A.G.L.
- TOP OF (F) TREES
±35'-0" A.G.L.
- RAD. CENTER OF (F) CARRIER ANTENNAS
±30'-0" A.G.L.
- BOTTOM OF (P) MONOPINE BRANCHES
±15'-0" A.G.L.
- GROUND LEVEL
0'-0"

- TOP OF (P) MONOPINE BRANCHES
±170'-0" A.G.L.
- TOP OF (P) ANTHEM TELECOM MONOPINE
±185'-0" A.G.L.
- RAD. CENTER OF (P) VERIZON WIRELESS ANTENNAS
±180'-0" A.G.L.
- RAD. CENTER OF (F) CARRIER ANTENNAS
±150'-0" A.G.L.
- RAD. CENTER OF (F) CARRIER ANTENNAS & TOP OF (F) TREES
±40'-0" A.G.L.
- RAD. CENTER OF (F) CARRIER ANTENNAS
±30'-0" A.G.L.
- BOTTOM OF (P) MONOPINE BRANCHES
±15'-0" A.G.L.
- GROUND LEVEL
0'-0"



SOUTHEAST ELEVATION
3/8"=1'-0"



SOUTHWEST ELEVATION
3/8"=1'-0"

NAPA VALLEY COUNTRY CLUB

1335 HAZEN RD
NAPA, CA 94958

ISSUE STATUS

Δ	DATE	DESCRIPTION	BY
	09/29/11	CLIENT REV	J.M.
	09/28/11	CLIENT REV	J.M.
	09/25/11	CLIENT REV	J.M.
	10/21/11	CLIENT REV	J.M.
	10/18/11	CLIENT REV	J.M.
	11/30/11	2D TILES	J.M.

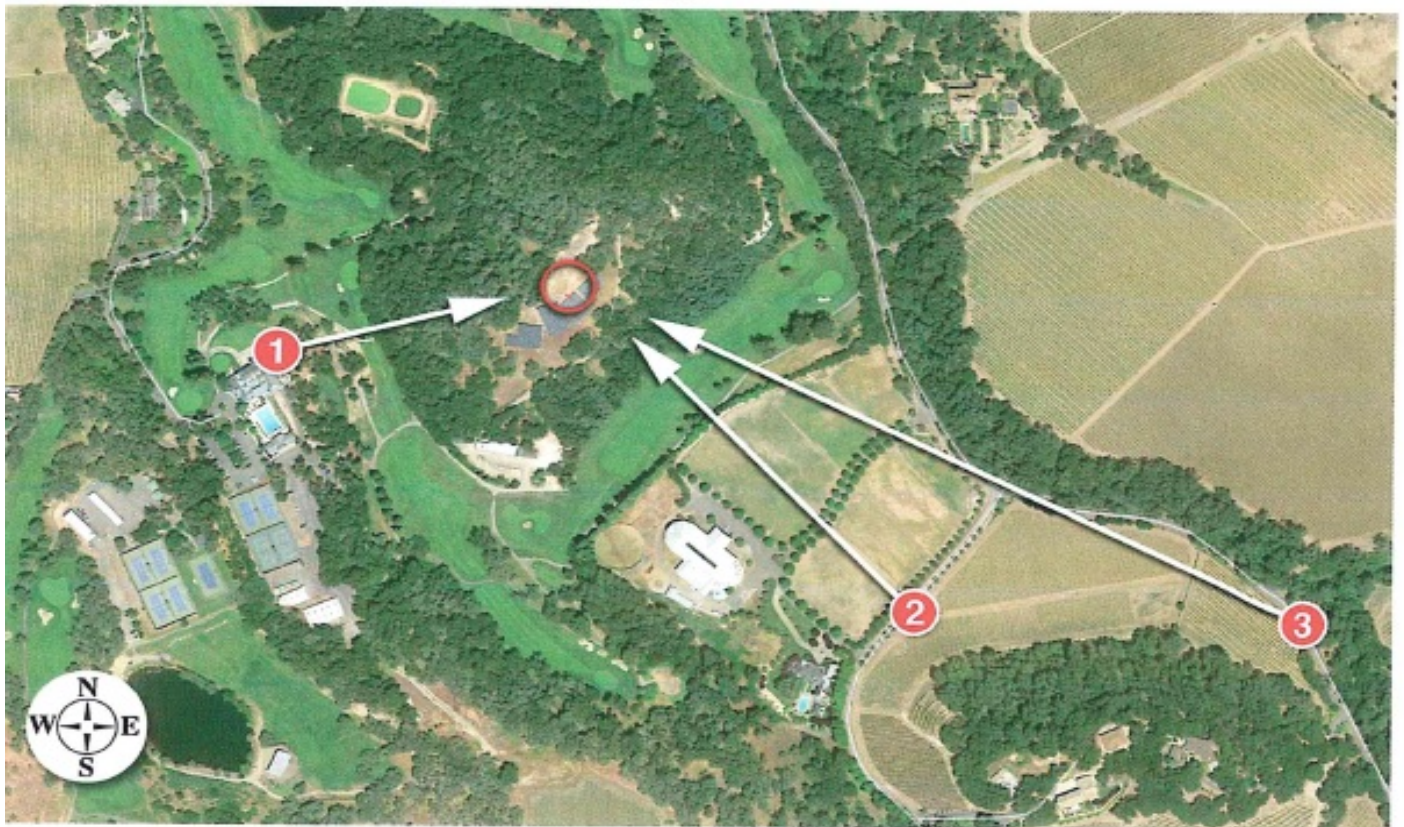
DRAWN BY: I. NAY
CHECKED BY: N. PAPAIOANNO
APPROVED BY: _____
DATE: 11/07/17

Streamline Engineering
CONSULTANTS INC.
1445 KEENE COLLEGE BLVD., SUITE 200, NAPA, CA 94958
CONTACT: JAMES HANCOCK | PHONE: 707-255-1800
FAX: 707-255-1801
WWW.STREAMLINEENGINEERING.COM

PRELIMINARY:
NOT FOR CONSTRUCTION
KEVIN R. SPORENSEN
54499

ANTHEM TELECOM
158 2ND STREET
SAN FRANCISCO, CA 94105

SHEET TITLE:
ELEVATIONS
SHEET NUMBER:
A-5





Existing



Proposed



9/16/17

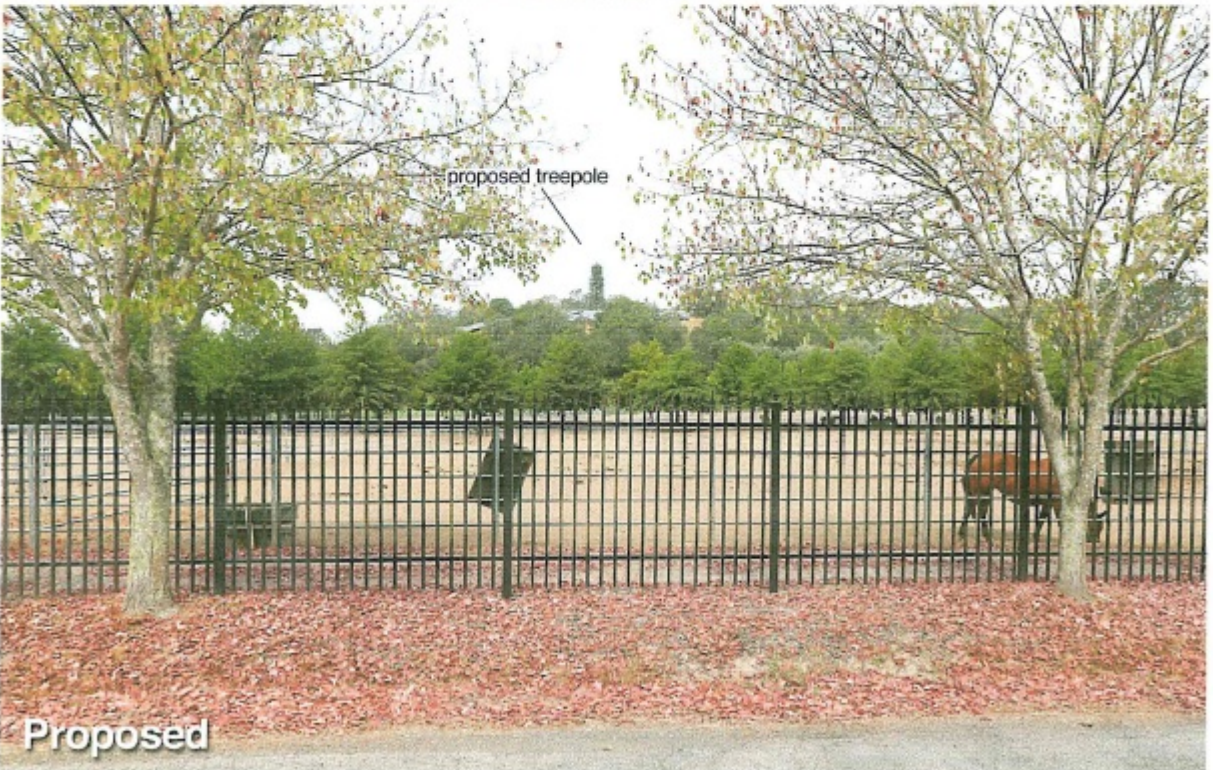
Napa Valley Country Club

3385 Hagen Road
Napa, CA

Looking East from Club House Deck

View #1

Applied Imagination 510 914-0500



9/16/17

Napa Valley Country Club

3385 Hagen Road
Napa, CA

Looking Northwest from Blue Oak Lane

View #2

Applied Imagination 510 914-0500



Existing



proposed treepole

Proposed



9/16/17

Napa Valley Country Club

3385 Hagen Road
Napa, CA

Looking Northwest from 3rd Avenue

View #3

Applied Imagination 510 914-0500