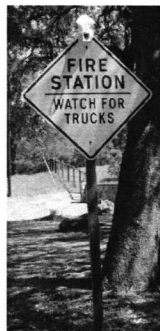
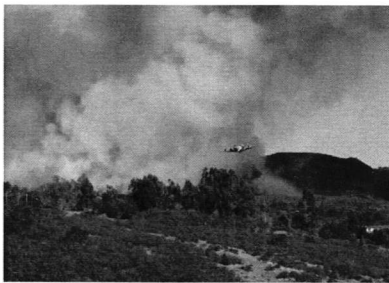




Napa County Grand Jury 2007-2008

Final Report on the

NAPA COUNTY FIRE DEPARTMENT



Photos of the Atlas Peak fire 2006

TABLE OF CONTENTS

1. Letter to Presiding Judges	
2. Letter to the Citizens of Napa County	
3. Napa County Fire Department	1
a) Summary	1
b) Background	3
c) Methodology	4
d) Discussion	5
Current County Organization	5
Napa County Fire Department 2005-2010 Strategic Plan	6
Chief of the NCFD	6
Line of Authority	7
NCFD Policies and Procedures	7
Volunteer Fire Chiefs	9
Volunteer Fire Chiefs Advisory Board	9
Volunteer Fire Departments	9
Future County Organization	10
e) Volunteer Fire Departments	12
Map of Volunteer Fire Department Service Areas	12
Angwin Volunteer Fire Department, #18	13
Capell Valley Volunteer Fire Department, #14	14
Carneros aka Edgerly Island Volunteer Fire Department, #10	14
Deer Park Volunteer Fire Department, #21	15
Dry Creek-Lokoya Volunteer Fire Department, #16	16
Gordon Valley Volunteer Fire Department, #22	17
Pope Valley Volunteer Fire Department, #20	18
Rutherford Volunteer Fire Department, #15	19
Soda Canyon Volunteer Fire Department, #13	20
f) Volunteer Fire Department Equipment and Response Time	21
Equipment	21
Critical Task Measures	22
Expected Response Time	22
Number of Incidents by Category	23
Area of Incident Count	23
Incidents and how they relate to equipment needs	23
Gordon Valley	23
Soda Canyon	23
Pope Valley	24
g) Volunteer Firefighter Training	25
h) Volunteer Firefighter Compensation	26
i) Strike Teams	27
j) Authorized Emergency Vehicles (AEV) Permits	27

4. Communications	28
5. Locks and Keys	28
6. Commendation	29
7. Findings	29
8. Recommendations	32
9. Request for Response	33
10. Glossary	34
11. Appendix	34
a) Appendix 1: CAL FIRE Scope of Work	34
b) Appendix 2: NCFD Policy and Procedures Manual Contents	37
c) Appendix 3. Letter of Appreciation	38
d) Appendix 4. Description of Firefighting Vehicle Types	38
e) Appendix 5. NCFD Replacement Criteria	39
f) Appendix 6. California Fire Code, Key Boxes	39
g) Appendix 7. Napa County Code, Title 18: Zoning.....	40



NAPA COUNTY GRAND JURY
P.O. BOX 5397
NAPA, CALIFORNIA 94581

April 21, 2008

The Honorable Francisca P. Tisher
The Honorable Raymond A. Guadagni
Presiding Judges 2007/2008
Superior Court of the State Of California
County of Napa
825 Brown Street
Napa, CA 94559

Dear Judges Tisher and Guadagni,

Pursuant to Section 933(a) of the California Penal Code, the 2007-2008 Napa County Grand Jury submits to you its Final Report on the Napa County Fire Department. Our investigation of the Napa County Fire Department was conducted in a manner consistent with the California Penal Code, this Court's Charge, and the historic role of the Grand Jury – to protect the interests of the citizens of Napa County.

This is the fifth in a series of final reports we will be issuing before our term ends. I would like to acknowledge the hard work and dedication of the Grand Jury which this report reflects. It is a privilege and a pleasure to work with them.

Respectfully submitted,

A handwritten signature in black ink, appearing to read "W. Trautman".

William E. Trautman
Foreperson
2007-2008 Napa County Grand Jury



NAPA COUNTY GRAND JURY

P.O. BOX 5397

NAPA, CALIFORNIA 94581

To the Citizens of Napa County:

The 2007-2008 Napa County Grand Jury is engaged in several comprehensive investigations of various governmental agencies in Napa County in exercise of its duty under California law. Our fifth report, issued with this letter, is the result of our investigation of the Napa County Fire Department.

The Napa County Fire Department consists of nine volunteer fire departments, 35-50 full-time paid firefighters (depending upon the season), an administrative staff headed by the Chief of the Napa County Fire Department, and fire dispatch services. The County Fire Chief, his staff, the dispatchers and full-time firefighters are CAL FIRE employees under contract to the County of Napa. This year's fire services contract with CAL FIRE is budgeted at \$7,428,585.

Volunteer fire departments in this County and throughout the country have a long and proud tradition. Their well-earned reputation is based on dedicated service to their communities as volunteer first responders to various emergencies. Firefighting and medical response are becoming increasingly complex, requiring extensive training and increasingly expensive equipment beyond the capability of local communities to provide. In California, the issue is further complicated by legislation which places all volunteer firefighters under the same California Occupational Safety and Health Administration (Cal OSHA) training and safety standards as full-time firefighters. This report contains findings and opinions that are critical of certain aspects of volunteer fire department administration at the County level and individual department level, but this in no way diminishes our respect for the dedicated volunteer firefighters. They are an invaluable asset to the communities which they serve.

The Napa County Counsel has reviewed this final report on the Napa County Fire Department and the Presiding Judge of the Napa County Superior Court has certified that the report complies with Title 4 of the California Penal Code. The report has also been accepted and filed as a public document by the County Clerk.

Copies of this report are available for your review in the Napa City/County Library and online by following the link to Grand Jury at <http://www.napacourt.com/>. It is our pleasure and honor to serve you during the 2007-2008 Grand Jury tenure. We hope you find our report enlightening.

Respectfully submitted,

The 2007-2008 Napa County Grand Jury

NAPA COUNTY FIRE DEPARTMENT

SUMMARY

The preservation of life, property and the environment is an inherent responsibility of local, state and federal government.

In order to fulfill the Grand Jury's mandate to investigate all branches of government, to be assured that they are being administered efficiently, honestly, and in the best interest of Napa County's citizens, this Grand Jury investigated the Napa County Fire Department (NCFD), including the nine Volunteer Fire Departments.

For the safety of citizens of and visitors to Napa County, a Memorandum of Understanding (MOU) between the County of Napa and the California Department of Forestry (now CAL FIRE) was established, *to provide ... the highest level of fire suppression, fire prevention, emergency medical, specialized rescue and hazardous materials response in the most cost efficient manner for reduction of life or property loss and damage due to fires, illness, accidents and other disasters.*

Napa County contracts with CAL FIRE for a variety of services including 35-50 paid firefighters. The Chief of the Napa County Fire Department is a CAL FIRE employee whose primary responsibility is to serve as the Unit Chief of the six county CAL FIRE Sonoma-Lake-Napa Unit. The estimated cost of the CAL FIRE services to Napa County for the period July 1, 2007, to June 30, 2008, is \$7,428,585.

The NCFD provides reasonable support to the nine volunteer fire departments, but the Napa County Fire Chief does not have the authority to establish minimum fire department entry requirements, ongoing volunteer training requirements, or to enforce countywide standards relating to volunteer emergency response procedures.

The current County/NCFD - MOU which dates to 1996, with a significant amendment in 2004, identifies the need for a Policies and Procedures Manual and provides for its preparation. For whatever reasons, the requirements of this MOU with respect to preparation of a Policies and Procedures Manual, with minor exceptions, have not been implemented during the intervening twelve years.

The number of volunteer firefighters in Napa County has declined from 250 in 2002, to less than 200 in 2008. There are many factors which impact the ability of volunteer fire departments to recruit and retain personnel. It is imperative that these issues be actively addressed. The Grand Jury has concluded that a dedicated full-time, County employee, with adequate staff, should be appointed as the Napa County Fire Chief.

The facilities of the nine volunteer departments vary significantly. The Grand Jury believes that minimum facility standards and improvements need to be provided by the County. Volunteer fire department fundraising activities can certainly provide for some

needs of the individual departments; however some departments are fundraising above and beyond, for major capital improvements. Equipment selection for the individual departments has been a long-standing issue, but some progress is evident in this area.

Volunteer firefighter training, both initial and ongoing, is one of the issues that needs to be resolved. Issues include content and quality of instruction. This subject impacts volunteer firefighter safety, the safety of our citizens and their property and the general liability of the County. Volunteer firefighters are County employees when responding to an emergency.

Volunteer firefighters who attend the requisite training sessions receive the same stipend regardless of the level of their training or the number of emergency calls to which they have responded. A more equitable stipend system based on qualification level and responses would help the retention issue.

Napa County volunteer firefighters are dispatched as strike-team members to areas outside of Napa County in support of major emergencies and compensated for their time. While CAL FIRE members of the strike teams are provided with motel rooms, volunteers must "camp out" because the County is not reimbursed for that expense. The Grand Jury believes it necessary to change this practice so that volunteers get the same accommodations.

California law permits a limited number of volunteer firefighting personnel in each department to outfit their private vehicles with lights and siren so that they can respond "Code 3" to an emergency. The County does not require any special training for these drivers and has no means of determining if the individuals carry adequate vehicle insurance. The County does not insure private vehicles. The Grand Jury recommends that training and insurance issues be addressed.

There are four different Rapid Entry Systems (Knox Locks) in Napa County: unincorporated Napa County (including Calistoga), St. Helena, the City of Napa and American Canyon. This seems to be an unnecessary impediment for first responders. Uniformity is recommended.

Much of Napa County is considered a high-fire-hazard environment and is rural in nature. Residents and visitors who are in rural or remote areas of Napa County can expect an emergency response time of 14 plus minutes and therefore may not survive a catastrophic (medical or fire) event. This needs to be addressed.

On March 10, 2008, there was a structure (house) fire on Soda Canyon Road in Napa. The incident location was only seven-tenths of a mile from the Soda Canyon Fire Station and yet, there was no equipment at the Soda Canyon Station that could respond (Engine 213 (1972) has not been listed as responding to an incident for many years). Thus, it took 31 minutes from the time of the initial 911 call at 9:29pm, until the first engine arrived on the scene of the incident at 10:00pm. There was extensive damage to the roof and attic with heavy smoke damage to the rest of the house, at an estimated loss of \$400,000.

It is reasonable to assume that if the local Fire Station had been properly equipped with a “running” engine, the volunteer firefighters responding to the Soda Canyon Station would have seen/located the fire and could have gotten to the fire sooner than the 31 minutes that it unfortunately took.

The Grand Jury readily concludes that the Soda Canyon Volunteer Fire Department needs a Type IV engine or similar smaller unit suitable for the smaller country roads, dirt roads, smaller driveways and bridges characteristic of the area. Also needed is a rescue vehicle with defibrillator to be housed at the Soda Canyon station. The Grand Jury recommends that the County, as soon as possible, provide a Type IV unit and a rescue vehicle with defibrillator that will fit into and be housed at the Soda Canyon station.

The Grand Jury also recommends the County, replace as soon as possible all firefighting vehicles that predate 1991, with vehicles appropriate for the individual service area requirements.

The Grand Jury understands that the NCFD has modified the makeup of the selection committee charged with specifying the purchase of “appropriate sized emergency response vehicles” to the area of service. Most of Napa County is rural to remote, with smaller country roads, driveways, entrance bridges, etc., and large fire equipment cannot easily/safely traverse these obstacles. The Grand Jury recommends that the NCFD continue the policy of consulting the Volunteer Chief or appointed representative from a given volunteer fire department when equipment is being selected for their use.

This report contains findings and opinions that are critical of certain aspects of volunteer fire department administration at the County level and individual department level. However, the Grand Jury has the highest respect for the individual men and women of the Napa County Volunteer Fire Departments who risk their lives and give up a significant amount of their time in support of their fellow County citizens and Napa Valley visitors. Napa County is privileged to have this dedicated corps of volunteers and has an obligation to see that they are properly supported in their work. The County is also fortunate to have a cadre of paid firefighters who are an integral part of the County Fire Department.

The Grand Jury wishes to thank CAL FIRE, all Napa County Volunteer Fire Departments and the NCFD for their cooperation in this investigation.

BACKGROUND

The NCFD exists through a contract between Napa County and the California Department of Forestry and Fire Protection (CAL FIRE formerly CDF). This contractual history dates back to 1932. The County/State contract is up for renewal by June 2008. In addition, a MOU was signed between CDF and the various Volunteer Fire Departments in approximately 1970. The current MOU (Napa County Agreement #3819) was approved by the Napa County Board of Supervisors in February 1996, amended in 2004. This action consolidated the administrative, training, purchasing, warehousing, and other

functions of all nine County Volunteer Departments through a single source with the CDF Administration. The nine Volunteer Departments still maintain their original charters and bylaws, and a few still work in conjunction with some type of board although there are no formally-elected Fire Boards in the county. Funding for apparatus and paid employees is generated from local property taxes, although many of the Volunteer Departments still put on fundraising activities and campaigns to pay for facility maintenance, capital improvements and other equipment needs within their own Department.

METHODOLOGY

The Grand Jury inspected all nine Volunteer Fire Stations throughout Napa County and conducted interviews with NCFD administration, CAL FIRE administration and Volunteer Fire Department personnel at all volunteer fire stations.

Publications/Documents reviewed:

- General Overview NCFD
- Organizational Chart
- Department Responsibilities summary chart – Staff Assignments
- Job Descriptions: CAL FIRE Unit Chief, Division Chief-Administration, Battalion Chief-Training/Safety Officer, Training Captain, Division Chief – South Division, Assistant Operations Officer – NCFD
- Napa County Agreement #3819, First MOU between County of Napa and Volunteer [Fire] Departments, approved by the Board of Supervisors (2/3/04)
- Napa County Agreement #3819, MOU between County of Napa and Volunteer Fire Departments, approved by the Board of Supervisors (7/30/96)
- Cooperative Fire Programs, Fire Protection Reimbursement Agreement (07/08)
- Organizational approved budget, current fiscal year (07/08)
- Organizational budget (06/07), (05/06), (04/05)
- County of Napa Fire Department Internal Audit FY ended June 30, 2003
- NCFD Policy and Procedure Manual, Policy # 2006-15, adopted 7/1/06
- Napa County Standard Company Evolutions, LNU Training, 2007 – CD
- CAL FIRE entry level firefighters requirement (ie hiring)
- CAL FIRE annual firefighter training requirements (hours and content)
- Napa Valley C.E.R.T. website
- NCFD Strategic Plan (2005-10)
- CAL FIRE/Napa County Fire Plan
- Emergency Response Directory
- Napa County Jurisdiction Maps
- Spreadsheet regular inspections performed Napa County Fire
- Update/progress report “Chip, Don’t Burn” FIRE WISE Program
- CAL FIRE/Napa County Fire Community Education Plan 2007/08
- *Living with Fire in Napa County, a Guide for the Homeowner*, a Napa Communities FIRE WISE Foundation publication

- 2001-2002 Grand Jury, NCFD Report
- Fire Station Deployment Analysis and Master Plan Implementation for the NCFD, Draft Report, Vol. 1,2,3, presented to Napa County Board of Supervisors on September 11, 2007; report and analysis performed by Citygate Associates, LLC
- Structure Fire Investigation Report, Incident # CALNU007777, 10/11/07
- Minutes of Volunteer Chiefs Advisory Board Meetings, 2007
- Letter of thanks from (private citizens) survivors of Southern California Harris Fire (October 2007) in appreciation for services performed by Napa Volunteer Firefighter strike team, November 5, 2007
- County of Napa Code sections 18.104.270 and 18.104.275
- <http://forums.firehouse.com>, urban interface vehicles Type I,II,III
- CDF FIRE, Structure Fire Investigation [report] Origin and Cause, October 11, 2007, Incident #: CALNU007777
- The Napa Valley Register, *Fire Engine ripped up while being pulled from mud*, February 1, 2008
- The Napa Valley Register, *Firefighters get a raise*, February 26, 2008
- CAL FIRE, Interagency Report of Incident and Dispatch Action report, Incident Number: 08-CALNU 001717
- The Napa Valley Register, *Fire Damages Soda Canyon home*, March 11, 2008
- ABC News, *Napa firefighters contain house fire after more than an hour*, March 11, 2008
- The Napa Valley Register, *Dog sensed Fire at Soda Canyon home on Monday night*, March 12, 2008

DISCUSSION

County Fire Department Administration

1199 Big Tree Road, St. Helena

Current County Organization

The NCFD consists of State, County and City firefighting agencies including nine volunteer fire companies. CAL FIRE, formerly CDF, provides paid firefighters, administrative services, fire-dispatch and miscellaneous support through a contractual agreement between Napa County and CAL FIRE. This contract history dates back to 1932. The scope of work for which the County currently contracts with CAL FIRE is shown in Appendix 1 of this report. The estimated annual budget for these services from July 1, 2004, to date is shown below. Most of the annual cost increase is due to increasing personnel costs, over which the County has no control:

- July 1, 2004 – June 30, 2005: \$5,554,011.36
- July 1, 2005 – June 30, 2006: \$5,960,428.80
- July 1, 2006 – June 30, 2007: \$6,859,492.04
- July 1, 2007 – June 30, 2008: \$7,428,585.91

The Volunteer Fire Departments maintain their original charters and bylaws. Funding for apparatus and paid employees is generated from property taxes, although many of the Volunteer Fire Departments still put on fundraising activities and campaigns to pay for facility maintenance, capital improvements and other needs within their own Department.

Napa County Fire Department 2005-2010 Strategic Plan

A five year plan for the County Fire Department was developed in 2005. The Strategic Plan was formulated around four goals: service, planning, culture, and organization. Each of these goals was supported by a series of objectives and action plans. Completion of the Strategic Plan was suspended during the preparation of the Citygate Associates *Fire Station Deployment Analysis and Master Plan*. The Citygate Associates report was issued in draft form in September 2007. The Grand Jury understands that there will be no "final" version of the report, but information contained in the draft will be incorporated into an updated Strategic Plan.

Under the "Organization" goal in the 2005-2010 Strategic Plan, the first objective was to *Implement an efficient and clearly defined departmental structure by 6/2006*. Action items for this objective included:

- Define Roles, Responsibilities, Structure and Authority: scheduled completion date 1/1/06
- Clarify Chain of Command: scheduled completion date 1/1/06
- Review and revise the MOU and Strategic Plan to be in harmony with each other: scheduled completion date 6/30/06

The Grand Jury finds these goals to be admirable but, unfortunately none has been realized to date.

Chief of the NCFD

The Chief of the NCFD is appointed by the Napa County Board of Supervisors. The current Chief of the NCFD is a CAL FIRE employee whose primary responsibility is CAL FIRE Unit Chief, Sonoma-Lake-Napa Unit. This unit consists of Sonoma, Lake, Napa, Solano, Colusa and Yolo counties. Napa County does not directly contribute to the salary of the Unit Chief, but does pay an administrative charge of 10.65% of the gross CAL FIRE expenditures for the County. The administrative charge is budgeted at \$714,197 for the current year.

CAL FIRE does have a "Position Essential Functions Duties Statement" (position description) for the Unit Chief of the Sonoma-Lake-Napa Unit. This duties statement does not address the County Fire Chief duties. Napa County does not have a position description for the County Fire Chief other than a brief description of his duties in Section 3.1 of the MOU as noted below.

The MOU between the County of Napa and Volunteer Departments states, "the County shall appoint a Chief to administer all operations of the County Fire Department. This person shall be commissioned with authority and responsibility to organize, equip, train, and maintain the Napa County Fire Department efficiently and in a cost effective manner."

Line of Authority

The Grand Jury finds that the NCFD does a good job in most areas of responsibility that relate to providing equipment and services, but that the County Fire Chief has not been provided with the authority to establish and enforce the policies necessary to ensure a consistent level of training for new recruits and annual training for all volunteers. Nor does the Chief have adequate authority to establish and enforce uniform policies covering emergency response criteria.

For the safety of the individual volunteer firefighters, for the safety of the citizens of Napa County and their property, and to minimize the general liability of the County for the conduct of County employees, the Grand Jury recommends that Napa County establish minimum training and operating requirements for volunteer firefighters consistent with Federal, State and County requirements; and the existing MOU be modified so that the Napa County Fire Chief has the line authority to enforce training and operating requirements.

Symptomatic of the current lack of authority of the County Fire Chief to enforce County policy can be found in the disciplinary criteria specified in the MOU. The County Chief may not remove a Volunteer Fire Department Chief for cause, but only make a recommendation for this action to the Board of Supervisors (MOU 8.4.1). This action must also have the concurrence of either three other volunteer chiefs (where the volunteer chief is elected) or the concurrence of one of the appointing officials (for an appointed chief). In a recent case, none of the requisite volunteer officials would agree to participate in an investigation, thereby making it impossible to take any action under the MOU. This occurred even though a State investigation found that a violation had occurred. Similarly, the County Fire Chief may not remove any member of a Volunteer Fire Department for cause unless the individual's Volunteer Fire Chief agrees (MOU 8.4.2). Other than the failed disciplinary action cited above, the Grand Jury is not aware of any disciplinary action taken against a volunteer firefighter in recent years.

The Grand Jury firmly believes that it is imperative that the County Fire Chief have line authority over members of the volunteer fire departments and that a viable grievance procedure be in place to provide redress of disciplinary action.

NCFD Policies and Procedures

The MOU, to which each Volunteer Fire Chief, the Napa County Fire Chief and the Napa County Board of Supervisors are parties, specifies that the Chief of the NCFD is required to publish and maintain a Napa County Fire Department Policies and Procedures Manual. The manual is to contain the policies and procedures necessary for operation of the department (MOU 6.1). The Chief of the County Fire Department, in conjunction with the Volunteer Fire Chiefs Advisory Board, is required to establish a grievance procedure which is to be included in the Policies and Procedures Manual. The procedure is to provide a mechanism for the department personnel to raise and have addressed, issues which adversely affect their abilities to perform duties, personnel problems, and accusations of wrongdoing (MOU 8.5).

A Standard Operating Procedures (S.O.P.) Committee is one of the standing committees which the Chief of the County Fire Department is required to maintain. The S.O.P. Committee is responsible for drafting policies and procedures regarding the department response to emergencies including fire, rescue, and medical. The S.O.P. Committee is also responsible for drafting policies and procedures covering telecommunications, including hardware specifications and dispatching (MOU 6.2.3).

The Grand Jury asked the NCFD to provide a copy of the Policy and Procedures Manual. The Grand Jury was advised in writing: *For many years, it has been a goal of the NCFD to produce a standardized package that would include specific policy and procedures, including a formal grievance process, for every employee in NCFD. This would include a welcoming overview for new volunteers and CAL FIRE employees alike... At the present time, there are only a handful of formally adopted policies and/or procedures, while there are many others waiting in the wings for formal adoption.* As of January 2008, the Napa County Fire Department Policy and Procedures Manual consists of 11 procedures indicated in Appendix 2 to this report. A formal grievance process has not been adopted.

The requirement for operating plans and manuals did not originate in the current (2004) MOU. The previous MOU, approved by the Board of Supervisors on July 30, 1996, contains even more explicit requirements for the development of department directives and specified that, *All Operating Plans and Manuals developed SHALL BECOME ATTACHMENTS TO THIS MEMORANDUM subject to the approval process in Section 5.11 of this agreement.* This older MOU detailed, among other things, a personnel plan: *This plan shall include, but not be limited to, membership criteria and conduct, membership duties, minimum standards for command functions, physical testing mandates, safety apparel use essentials, accident reporting necessities, licensing specifications and other personnel aspects necessary for attainment of department objectives. This plan shall be initially completed by January 1, 1998 and will be updated annually.* A Training and Safety Plan and an Apparatus/Equipment Plan were likewise to have been completed by January 1, 1998, and updated annually.

One of many procedures which continue to be lacking is the training requirement for volunteer firefighter equipment operators. Municipal firefighters (paid and volunteer) and paid County firefighters must meet specific training and experience criteria before operating apparatus in response to an emergency. A NCFD Procedure which exists in draft form but has never been implemented is entitled "Volunteer Firefighter Driver/Operator." This draft defines the requirements for a Rescue Driver, Engine Driver and Water Tender Driver. Not only has this procedure never been implemented, but in draft form it states, *Current NCFD Driver/Operators are not required to meet the requirements detailed in this policy...* A companion document, also not issued, is the NCFD Driver/Operator Training Program Handbook.

Under the provisions of the MOU now in force, the Napa County Fire Chief, the Napa County Volunteer Fire Chiefs collectively as the Advisory Board and the NCFD Standing Committees (e.g. Training and Safety Committee and Standard Operating Procedures Committee) are jointly responsible for developing and implementing these policies. The

Board of Supervisors is responsible for oversight of the Napa County Fire Department. Procedural requirements impacting the safety of firefighters and the public alike, dating at least to 1996, have not been fully implemented.

Volunteer Fire Chiefs

Each Volunteer Fire Department must have a Volunteer Chief. The Chief is either elected by the members of the department or is appointed by the governing body of the department. Terms of office range from one to four years. The MOU specifies that a Volunteer Fire Chief must be a member of good standing in the community, have five years of service with a fire department, have three years service as a Chief Officer or Volunteer Fire Captain and have successful service in emergency incident command functions for a period of three years. The Volunteer Fire Chief is charged with representing personnel and the interest of the specific department at appropriate meetings, committees and assignments.

Volunteer Fire Chiefs Advisory Board

The Volunteer Fire Chiefs, collectively, comprise an advisory body known as the Volunteer Fire Chiefs Advisory Board (VCAB). VCAB is charged with providing policy and procedures affecting the NCFD. VCAB has a Chairperson and Vice Chairperson elected from among the Volunteer Fire Chiefs. The County Fire Chief appoints a paid Chief Officer to serve as the Executive Officer to VCAB; the Executive Officer is to arrange for staff support to VCAB as requested by the Chairperson. As apparent from the title, VCAB is advisory only. Based on the investigation conducted by the Grand Jury, we note that even the advisory function of this board is seriously diluted by the great diversity of opinion and inability to reach consensus, that exists within the ranks of the Volunteer Fire Chiefs.

Volunteer Fire Departments

To understand the challenges facing volunteer fire department organizations as a whole, it is essential to appreciate the unique and entrenched character of each individual fire department. Volunteer fire organizations have existed in Napa County for up to 140 years. They not only provide a community response to emergency situations, but serve as the social center of many rural communities. Volunteer fire departments are expected to maintain current incorporation or charitable trust and tax-exempt status. Fundraising activities not only support the fire department per se, but often provide broader community support. For years these organizations have elected their own officers, set their own policies, controlled admission to the department and generally existed as fully independent entities.

The consolidation of County firefighting activities which began in the 1930's and was further strengthened by the 1970 MOU reflects the increasing complexity of the demands on fire departments and increasing cost of firefighting equipment. The cost of a fully equipped Type I fire engine exceeds \$400,000. Like their municipal counterparts, 80% or more of volunteer fire department calls are medical in nature – not fires. Not only do these medical calls support community members in their homes, but locals and visitors alike requiring medical assistance on our roads and in recreational areas.

In addition to training issues addressed in this report, the volunteer firefighters consistently referred to the increasing burden of the administrative demands on their departments. Without any paid staff, the volunteer chiefs must contend with significant record keeping requirements in addition to department training and, of course, emergency responses. Most volunteer fire departments reported that the NCFD added unnecessarily to the administrative burden by failing to maintain the records that they were provided by the volunteer departments. This was attributed to high turnover at the NCFD with respect to volunteer support personnel and the preoccupation of the CAL FIRE personnel in general with their primary CAL FIRE responsibilities.

The 2001-2002 Grand Jury reported that the NCFD had approximately 250 volunteer firefighters. While that is still the authorized strength of the nine volunteer fire departments, there are now less than 200 volunteer firefighters. This 20 percent decrease in the number of volunteer firefighters is a major concern. The volunteer departments report that it is becoming more difficult to recruit and retain volunteers, in part due to external constraints. The Grand Jury does not believe that Napa County can afford to replace volunteer firefighters with paid firefighters, nor would this be desirable. The mid-step annual salary of a CAL FIRE Firefighter II (without benefits or overtime) is \$36,744. According to Citygate Associates, LLC, *Fire Station Deployment Analysis and Master Plan Implementation for the Napa County Fire Department*, the current cost of one equivalent full time CAL FIRE firefighter with salary, benefits, overtime and supplies, 24 hours a day, 7 days a week, 365 days a year is close to \$170,000/yr. The Napa Valley Register reports that the Napa City Council has approved salaries that pay a new firefighter \$74,460/yr.

At the same time, State law has defined volunteer firefighters as County employees when responding to emergencies. The County therefore has a vested interest in regulating the action of the volunteer departments to ensure that they meet or exceed recognized minimum standards. The Grand Jury finds that the individual volunteer fire departments would benefit from receiving greater support from the County and in return consider relinquishing some of their long held independence.

Future County Organization of NCFD

The Grand Jury investigation disclosed two principal and opposing views on the future organization of the NCFD: 1) the first is retention of the current CAL FIRE County Fire Chief system; 2) the second is a County employee whose sole responsibility as County Fire Chief would be the NCFD.

CAL FIRE currently provides paid firefighters, fire dispatch services, volunteer training by paid firefighters, centralized procurement, centralized maintenance of vehicles and equipment, administrative support, and other ancillary support (see Appendix 1). The advantage of the existing system is that CAL FIRE-provided services are directly coordinated by a CAL FIRE employee. In addition, this employee can easily coordinate external resources in the event of a major fire emergency. The disadvantage of the existing system is that the primary responsibility of the CAL FIRE County Fire Chief and his support staff is the six-county CAL FIRE Sonoma-Lake-Napa unit, not the NCFD. In

addition, the current system results in a State employee supervising County volunteers. This adds to the existing tension between paid and volunteer firefighters.

A County employee appointed as the County Fire Chief, would have as his/her primary focus the support of County volunteer firefighters. The County could contract with CAL FIRE or others for the services currently provided by CAL FIRE. The County could contract for the services of paid CAL FIRE employees in the same context that the American Canyon Police Department is staffed by County Sheriff deputies.

Without prejudice regarding the incumbent and based on the Grand Jury's investigation, it is our opinion that Napa County could be better served by the appointment of a County employee as the Napa County Fire Chief. An individual who has the County Fire Department as his/her sole responsibility would be able to devote more time and effort to the resolution of the various issues impacting volunteer firefighters than the incumbent for whom Napa County Fire Chief is a "collateral" duty assignment. In addition, replacing a State employee with a County employee may ease the integration of the diverse County volunteer firefighting companies into a more cohesive, structured organization.

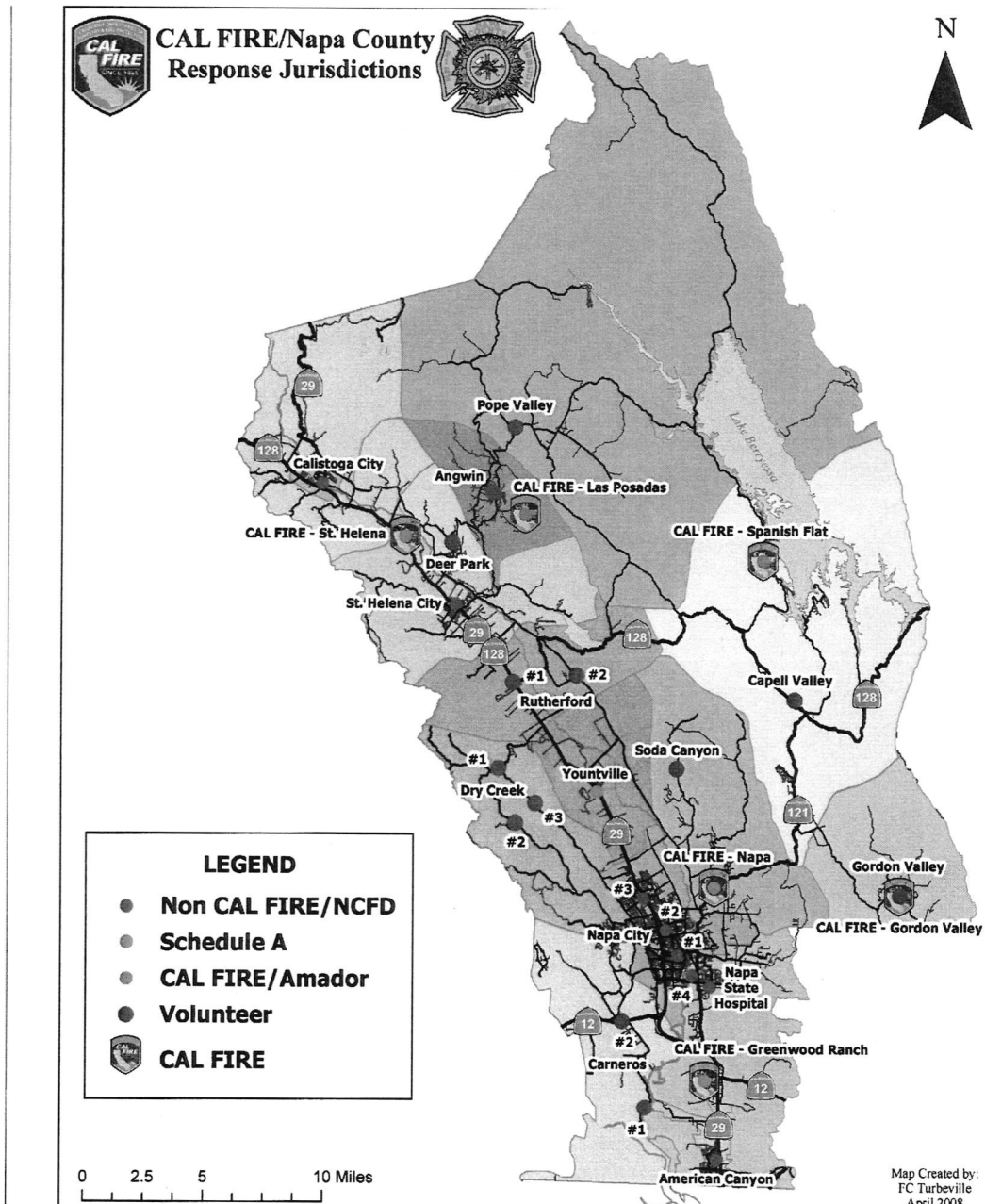
The 2001-2002 Grand Jury reached a similar conclusion with the recommendation: "The Napa County Board of Supervisors should reconsider its decision to have CDF administer the NCFD rather than County." The County response was: *The recommendation will not be implemented. Due to the fact that the assumptions in Finding 6 were incorrect, there is no need for this recommendation to be implemented.* In the opinion of the Grand Jury, the decision to not reconsider CDF administration was a bit short sighted.

The Grand Jury notes that replacing the CAL FIRE County Fire Chief with a County employee, without changing the line authority of County Fire Chief, would not address the overriding concern of this Grand Jury.

The Grand Jury's wider investigation which included Municipal Fire Departments found broad support among most County firefighters for an integrated County fire department that included all the fire departments in the County.

Volunteer Fire Departments

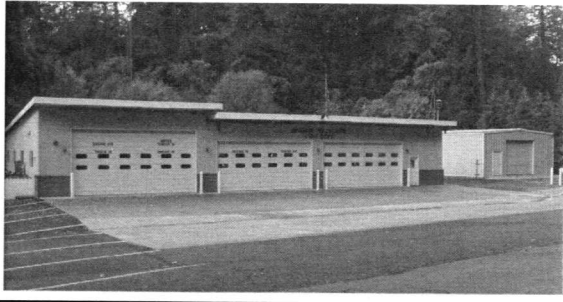
Map of Volunteer Fire Department Service Areas



Angwin Volunteer Fire Department, #18

275 College Avenue, Angwin

www.angwinfire.com



The Angwin Volunteer Fire Department (AVFD) was founded after the Pacific Union College Fire Department and the Community Fire Department merged their resources in 1958. Under the leadership of Chief Myron Newton (1921-1941) the Department began the development and construction of the facility in 1958, that currently houses the Department today. In order to comply with seismic requirements and the ever-expanding size of fire apparatus,

the facility was remodeled in 1992 and 2000. The facility is volunteer owned.

Since its inception, the AVFD has maintained a nonprofit status and recently updated its official state and federal filings, 501(c)3 status, in January 2006. The AVFD has always operated under its parent company and Board of Directors, the Angwin Community Council/Angwin Fire Department. The official name of the Department as of the 2006 revision is Angwin Volunteer Fire Department.

The AVFD shares resources with Deer Park Volunteer Fire Department and the Pope Valley Volunteer Fire Department, maintains an informative website, and has a current evacuation plan for its service area.

Fundraising: Annual solicitation letter to local constituency.

Currently the AVFD is staffed at 44 active personnel, and is authorized to have 45.

County owned Equipment at this site:

- Engine 18 (2000) Type I, Pierce, Sabre' Cab, Co# 8109, seats 8
- Engine 218 (1989) Type I, Beck, Ford 8000, Co# 8053, seats 6
- Engine 318 (1992) Type III, Yanke 4x4, International 4800 Front, Co# 8071, seats 5
- Rescue 18 (2003) Pierce, Ford F-550 Front End, Co# 8109, seats 4
- Truck 18 (1994) Westates, HME Front End, Co#8085
this unit is currently in the shop for repairs
- Water Tender 18 (2004) Pierce, Peterbuilt 357 Front End, Co# 8110, seats 2

All apparatus is currently owned by Napa County. However, Engine 18, Rescue 18, and Water Tender 18, were originally owned by volunteers. Through the MOU, the County agreed to purchase the replacement vehicles.

Capell Valley Volunteer Fire Department, #14

1193 Capell Valley Road, Napa



The Capell Valley Volunteer Fire Department (CVVFD) is housed in a new facility built by volunteer labor/donations in 1996, and is now owned by Napa County. The facility houses 2 engines and 1 rescue vehicle that are also County owned. The firehouse is used by the community and a church, and includes a large multi-purpose room.

The Grand Jury noted that there was no sign or street light on the road at the Fire Station to indicate the entrance, thus making it difficult to locate at night.

Registered as a “charitable organization”, the CVVFD was incorporated as a 170(c) charitable trust, in 1996.

In years past, the CVVFD held 3-5 fundraisers a year, but no longer does so.

CVVFD is currently staffed at 19 active personnel, and is authorized to have 25.

County owned Equipment at these sites:

- Engine 14 (1991) IHC, Co# 8062
- Engine 214 (1985) Ford, Co# 8002
- Rescue 14 (1999) Ford, Co# 8092

Carneros (Edgerly Island) Volunteer Fire Department, #10

1598 Milton Road, Napa

Carneros satellite, #10A

Old Sonoma Hwy and Hwy 121, Napa

www.carnerosfire.org



The Carneros Volunteer Fire Department (CVFD) was formerly called the Edgerly Island Volunteer Fire Department. The name has been revised in an effort to better reflect its service area that includes Edgerly Island, the entire Hwy 121/12 corridor, and into the Browns Valley area, up to the Napa City

limits.

The Milton Road facility was built in 1950, by volunteers and houses one engine that is County owned. The building sits in the flood plain, is old and in need of upgrading. The County owned Carneros satellite building houses one County owned fire engine and leaks profusely when it rains. Paved parking is limited for responding Volunteer firefighters.

The CVFD shares resources with the Soda Canyon Volunteer Fire Department and the Dry Creek-Lokoya Volunteer Fire Department.

The Carneros Vineyard Run, previously organized by the Napa Valley School of Fine Arts and Vocational Arts Association, was turned over to CVFD in 2007. *The Carneros Run 2008* event is to benefit the building fund for a new Carneros Fire Station.

Currently is staffed at nine active personnel, the CVFD is authorized to have 25.

County owned Equipment at this site:

- Engine 10 (1989) Ford, Co# 8054
- Engine 210 (1998) Pierce, Co# 8091
- Water Tender 10 (1993) Mack, Co# 8076
- Water Tender WT16 (2005) Co.#8113 – this vehicle is housed at Dry Creek-Lokoya and shared with Dry Creek-Lokoya and Soda Canyon

Relocation of the Carneros/Edgerly Island Fire Station

The 2007-2008 Grand Jury recommended, by separate report, that the Napa City Council vote to approve the construction of a fifth fire station to be located in Browns Valley; and, with the Board of Supervisors, establish a plan to relocate the Carneros/Edgerly Island station to Browns Valley. As noted in the Citygate report, there are two issues regarding the location of the Carneros/Edgerly Island Fire Station. The first is the fact that the Milton Road location of Station #10 places it near the western boundary of its service area rather than being more centrally located. The second is that Citygate found that most of the firefighters who are members of the Carneros/Edgerly Island Volunteer Fire Department live in the Brown's Valley/Carneros region. This results in long drive times for volunteers to get to Station #10, and typically long drive times to get equipment to the emergency. Combining a new Napa City fire station with Station #10 would improve response times and provide an economical solution to the relocation of this station.

Deer Park Volunteer Fire Department, #21

670 Sanitarium Road, Deer Park



The Deer Park Volunteer Fire Department was founded in the 1920's as the Sanitarium Volunteer Fire Department. In the late 1960's the department was renamed the Deer Park Volunteer Fire Department (DPVFD) and in the early 1990's was incorporated as a 501(c)3 nonprofit, with a Board of Directors. The

facility was built over 35 years ago and is owned by the hospital. The station currently houses 2 engines and 1 rescue vehicle that are County owned.

The DPVFD shares resources with the Angwin Volunteer and Pope Valley Volunteer Fire Departments.

Fundraising: Annual letter of solicitation to local constituency.

The DPVFD currently has 15 active personnel and is authorized to have 25.

County owned Equipment at the site:

- Engine 21 (2001) HME, Co# 8105
- Engine 221(1993) IHC, Co# 8072
- Rescue 21 (1987) GMC, Co# 8032

Needs: apparatus that can traverse light driveways, small bridges; smaller vehicles that are appropriate for local needs.

Dry Creek-Lokoya Volunteer Fire Department, #16

5900 Dry Creek Road, Napa

Dry Creek-Lokoya satellite, #16A

5410 Dry Creek Road, Napa

Dry Creek-Lokoya satellite #16B

3107 Mt Veeder Road, Napa

www.drycreek.org



The original Dry Creek-Lokoya Fire Department was established in 1945, following the great fire of the same year. The local residents voted to pay an annual membership fee to finance the purchase and upkeep of a fire engine and to maintain a network of trails providing access to all reaches of the watershed. The original Dry Creek-Lokoya Fire District Association, Inc. was established on March 16, 1949. In April of 1996, the

Napa County Fire Department, Station 16, West Hills, was established as a 501(c)3 nonprofit. The current 501(c)3 nonprofit, NCFD, Dry Creek-Lokoya, Inc., was incorporated in April of 2000.

The Dry Creek-Lokoya Volunteer Fire Department (DC-LVFD) covers a vast response area of 200 square miles that encompasses the western hills of the Napa Valley throughout the Dry Creek Watershed to the Sonoma County line. The service area is accessible by few roads, so they have located apparatus in strategic locations within their district to optimize response time. The main fire station #16 was constructed in 1985, and houses 1 engine and 1 water tender; the #16A satellite shed, built around 1980,

houses 1 engine; and the Mt. Veeder shed, built around 1985, houses a Type III engine, specifically constructed for wildland firefighting. All facilities are volunteer owned.

In addition, the DC-LVFD shares resources with the Soda Canyon Volunteer and Carneros Volunteer Fire Departments.



The DC-LVD currently has 30 active personnel and is authorized to have 35. The Department enjoys the distinction as founder, 25 years ago, of the first all-women volunteer fire crew in northern California.

Increased traffic and population density on lower Dry Creek Road has placed a higher demand for services. Under the MOU with Napa County, the DC-LVFD is eligible for additional fire apparatus to serve the need, provided the DC-LVFD acquire a parcel of land and construct at their expense, a fire station to house the equipment. Proceeds from the annual "Home Winemakers Classic", put on by the DC-LVD, have been earmarked for this capital campaign.

County owned Equipment at these sites:

- Engine 16 (2003) Type I, Pierce, Co. #8107
- Engine 216 (1991) Type III, IHC, Co. #8061
- Engine 316 (1990) Type III, IHC, Co.#8059
- Water Tender WT16 (2005) Co.#8113 – this vehicle is shared with Carneros and Soda Canyon

Volunteer owned Equipment at these sites:

- Squad 16 – 4x4 Rescue - Ford F350 (1999)
- Command 16 – 4x4 Chevy Tahoe (1995)

Needs: The main fire station needs running water, septic system, flush toilet, and an exhaust system.

Gordon Valley Volunteer Fire Department, #22

1345 Wooden Valley Cross Road, Napa
unofficial webpage: <http://gordonvalley.com>



The Gordon Valley Volunteer Fire Department (GVVFD) was established in 1946. The fire station is located on State property next to the CAL FIRE seasonal fire station on Wooden Valley Cross Road. The station was built with local donations and labor from Napa and Solano counties in 1974, with later improvements in 1996, and is

volunteer owned. The facility houses 2 engines and 1 rescue vehicle that are County owned.

The GVVFD was incorporated as a 501(c)3 nonprofit in 1996.

The Department has 13 active personnel and is authorized to have 20. Recruiting is difficult in this remote area of Napa County due to higher training standards, which is appropriate but highly demanding on two-income families with children. Also the area has a high population of retirees (over 65) that would like to participate but are physically unable.

The GVVFD responds to calls from Napa and Solano County.

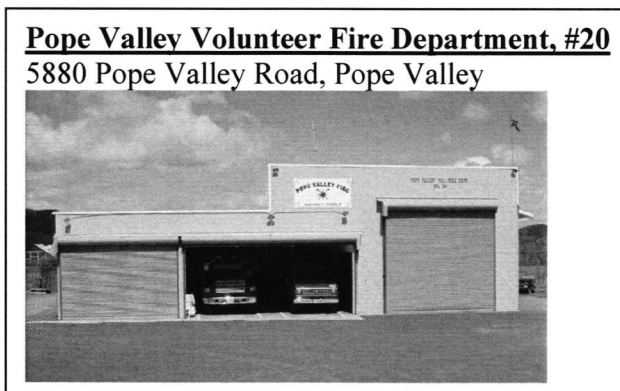
Fundraising: quarterly dinners, a garage sale and annual solicitation to local constituency.

County owned Equipment at this site:

- Engine 22 (1995), Type II, Freightliner, FL70, 2wd. Co#8082
- Engine 222 (1990), Type III, (500 gal.) International Navistar, 2wd. Co#8011
- Rescue 22 (2001) Light Rescue, Ford F-550, 4wd. Co#8107

Needs: a water tender; smaller rigs, 4-wheel drive, grass rigs/brush units.

Communication is a problem in this remote area of Napa County. This will be addressed in a separate 2007-2008 Grand Jury report.



The Pope Valley Volunteer Fire Department (PVVFD) was founded in 1932, when the County provided an engine housed in a garage attached to the Pope Valley Garage. The PVVFD was incorporated as a 501(c) 3 nonprofit in 1997, as the Pope Valley Volunteer Fire Department, Inc. The current fire station was constructed in 1974, and added onto since then. The fire

station was built with funds from local fundraising events and houses 2 engines, 1 truck, 1 rescue vehicle and 1 water tender, all County owned.

The PVVFD shares resources with the Angwin Volunteer and Deer Park Volunteer Fire Departments.

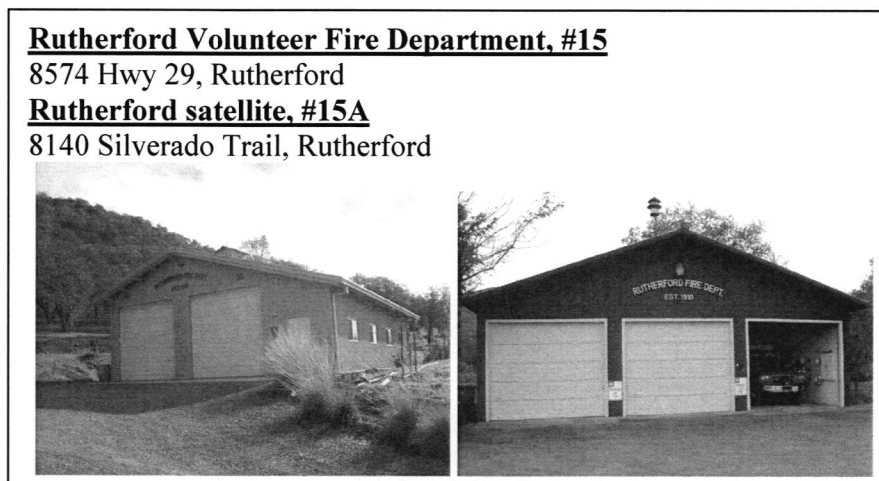
The PVVFD has 12 active personnel and is authorized to have 25.

Fundraising: a very successful and popular annual *Turkey Shoot*. In its 40th year, the Turkey Shoot attracts an estimated 3500 visitors.

County owned Equipment at this site:

- Engine 20 (1987), Type III, Co# 8051
- Engine 220 (2002), Type I, Co# 8102, currently in shop for repairs
- Rescue 20 (1988), Ford, Co# 8010, light rescue for van in service, purchased by community member, currently being replaced by county owned unit
- Water Tender 29 (1985), Type I, 3,000 gallon, Kenworth, Co#8075
- Utility 20, light utility vehicle, Ford, Co# 8066

Needs: smaller engine, for dirt road passage, with fuel tank not affixed below the axle.
Large service area with many dirt roads.



The Rutherford Volunteer Fire Department (RVFD) was established in 1918, and later established as a charitable trust in the 1950's. The RVFD is in the process of restructuring to a 501 (c) 3 nonprofit. The

RVFD Fire Station #15, was built in the 1950's and houses 1 engine and 1 rescue vehicle. This station was not large enough to house a water tender and bigger engines. Expansion of the facility was difficult due to limited lot size. Fire Station #15A, was built in 2005, dedicated in 2006, and houses 1 engine and 1 water tender. Both facilities are volunteer owned.

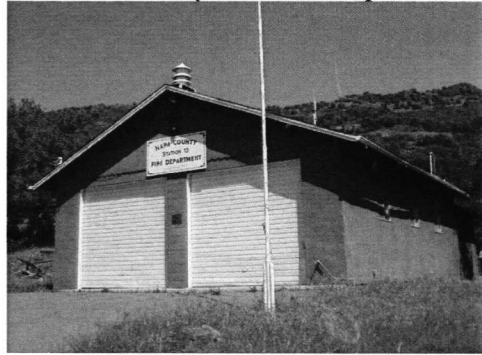
Fundraising: one fundraiser each year in the form of an annual solicitation letter.
Local support/donations totaling \$250,000, saved over 35 years, built the new firehouse.

RVFD has 16 active personnel, and is authorized to have 20.

County owned Equipment at sites:

- Engine 15 (2001) Pierce, Co# 8100
- Engine 215 (1972) Ford, Co# 8016
- Rescue 15 (1993) Ford, Co# 8070
- Watertender 15 (2005) Peterbuilt, Co# 8111

Soda Canyon Volunteer Fire Department, #13
2368 Soda Canyon Road, Napa



The Soda Canyon Volunteer Fire Department (SCVFD) was established in 1961, and incorporated as a 170(c) charitable trust in the same year, with a Board of Directors. The fire station was built in 1964, with volunteer funds/labor and currently houses 1 engine. The fire engine housed at this facility is currently listed on the inactive list, however was listed as active “front line” until recently. The Grand Jury noted

that the engine, c. 1972, had apparently not been used for some time as abundant cobwebs were found on the tires. This engine predates 1985, and therefore does not meet current NFPA 1901 safety standards for fire apparatus.

NCFD purchased a Type I “road queen” for the Soda Canyon Volunteer Fire Department; however it was too large and could not fit into the Soda Canyon firehouse.

CAL FIRE recently purchased a Type III engine for the Soda Canyon Volunteer Fire Department, however, again, it was too large and could not fit into the Soda Canyon firehouse. Both engines are housed at the Napa Fire Station on Monticello Road (7 miles from the Soda Canyon firehouse). Further, the Type I engine cannot traverse many of the roads, driveways and bridges in the Soda Canyon service area.

With no usable apparatus at this fire station, this Department responds from the Monticello Fire House. Response time has been extended to an unacceptable 30+ minutes to some areas within the Soda Canyon service area.

The Soda Canyon area is identified by Citygate as having the second highest rate of incidents in Napa County.

The SCVFD shares resources and equipment with Carneros Volunteer and Dry Creek-Lokoya Volunteer Fire Departments.

Fundraising activities have been suspended for the past twelve years.

The SCVFD has 33 active personnel. The crew meets at the Soda Canyon Fire Station for monthly training/meetings.

County owned Equipment at this site:

- Engine 213 (1972) Type III, Co#8047, on the inactive list.

County owned Equipment at other sites and designated for Soda Canyon:

- Engine 13 (1997), Type I, Co# 8090, (Napa-Monticello Station)
- Engine 213 (2007), Type III, Co#8047 (Napa-Monticello Station)
- S13 (~1986) air/light service truck, IHC, Co# 8058, (Napa-Monticello Station)

- Water Tender WT16 (2005) Co.#8113 – this vehicle is housed at Dry Creek-Lokoya and shared with Dry Creek-Lokoya and Carneros

The above listed Schedule C, engine 213 (1972), is currently on the inactive list. However, through 2007, the engine was on the “active list”. The Grand Jury investigation revealed that this vehicle has not been listed as responding to an incident for many years. The Volunteer Department has made requests for the engine to be repaired or replaced with a Type IV unit since 1999.

Needs:

- Type IV engine suitable for smaller country roads, dirt roads, small driveways and bridges characteristic of the service area, to be housed at the Soda Canyon Station. See Appendix 4, for apparatus descriptions.
- A rescue truck equipped with defibrillator to be housed at the Soda Canyon Station.
- Upgrade water system. No potable water at the Station. Water storage tank installed in 1964.
- Right of way/driveway/parking restricted by new neighbor entrance/gate in non-compliance with Napa County Code, Title 18, requirements. See Appendix 7.

Volunteer Fire Department Equipment and Response Time

Overall need in rural areas of Napa County is appropriate type/size vehicle apparatus to negotiate narrow dirt roads, traverse light driveways, small bridges...in other words, vehicles that are appropriate for local needs to facilitate most efficient/effective response time.

Equipment

The current MOU makes provision for a standing Apparatus Committee which among other responsibilities includes *recommending standard designs for each type of fire apparatus purchased by the Napa County Fire Department*. During the Grand Jury investigation, many of the volunteer organizations complained that the equipment selected by the County Fire Department was not suitable, or certainly not optimal, for the recipient fire department. In general, this complaint dealt with the inappropriate assignment of large, heavy equipment to rural areas with narrow, winding, dirt roads and low capacity bridges.

The Grand Jury was advised by the NCFD that the equipment selection process had been modified to include a representative of the Volunteer Fire Department for which the equipment was intended. Because of the lead-time to procure fire equipment, the Grand Jury was unable to determine if this change is producing the intended results.

The Draft Citygate Report detailed extensive information and statistics regarding the NCFD, and the Grand Jury has referred to some of that information herein. However, the report admits that “Citygate did not inspect all apparatus, a spot check revealed...”. This Grand Jury visited all nine volunteer fire departments and conducted its own research

regarding facilities and equipment and found that while some departments were well equipped, others were lacking in certain areas. This engendered the question, what would be the response ramifications in those areas where equipment and/or the fire stations were not up to par?

Critical Task Measures

Nationally published fire service “time vs. temperature” tables indicate that after about 4 minutes of free burning, a room fire will grow to the point of flashover where the entire room is engulfed, the structure becomes threatened and human survival near or in the fire room becomes impossible. Fire spread in a structure can double in size every minute of its free burn period.

The Grand Jury found that brain death begins within 4 to 6 minutes of the heart having stopped. The American Heart Association advocates 5 minutes from report to defibrillation for the greatest survivability of a person with sudden cardiac arrest. In a trauma patient, severe blood loss and organ damage becomes so great after the first hour that survival is difficult if not impossible. The goal of trauma medicine is to stabilize the patient in the field and get them to the trauma surgeon inside of one hour. Thus, the effective response force must arrive in time to minister to these patients and prevent catastrophic events from occurring. This is especially critical in rural areas where distance to the hospital is a factor.

In rural areas, the Insurance Service Office for Class 8 protection rating, requires a 5-mile road response distance 85 percent of the time for the first-due engine and the staffing ability to deliver fire streams of 200 gallons per minute continuously for 20 minutes within five minutes of arrival.

According to the NFPA, “rural” is defined as less than 500 people per square mile; recommended 6/14 minute response time; 80% of the time.

Expected Response Time

NFPA 1720 Recommendations for Substantially Volunteer Departments

<u>Zone</u>	<u>Demographics</u>	<u>Response Time</u>	<u>% of Completion</u>
Urban	>1000 people/sq.mi.	9 minutes	90%
Suburban	500-1000 people/sq.mi.	10 minutes	80%
Rural	<500 people/sq.mi.	14 minutes	80%
Remote	travel distance ≥8 mi.	anytime	90%

According to *Living with FIRE in Napa County, a Guide for the Homeowner*, a Napa Communities FIRE WISE Foundation publication, much of Napa County is considered a high hazard fire environment. The facts assume this area possesses all the ingredients necessary to support large, intense, and uncontrollable wildfires. Within this hazardous environment, there are individual houses, subdivisions, and entire communities. Many homes, however, would be unable to survive an intense wildfire. Since it is not a question of “if” wildfires will occur but “when” they will occur, the likelihood of human life and property loss is great and growing.

The Draft Report by Citygate Associates states that two years of available data break down as follows:

	<u>2005</u>	<u>2006</u>	<u>Total</u>
Incidents	2416	2547	4963
Fire Category	430	400	830
Medicals	1699	1819	3518
Others	287	328	615

Computer Aided Dispatch data regarding the distribution of incidents by community:

Area of Incident Count

Yountville	768
Soda Canyon	594
Capell Valley	462
Calistoga	432
Napa	422
Greenwood	421
St. Helena	409
Angwin	328
Pope Valley	281
Rutherford	277
Edgerly Island	176
Deer Park	157
Dry Creek	126
Gordon Valley	63
American Canyon	32

INCIDENTS AND HOW THEY RELATE TO EQUIPMENT NEEDS

Gordon Valley: need water tender structure fire total loss

October 11, 2007: Initial dispatch was for a wildland fire, however on arrival at the scene it was determined to be a structure (house) fire. Notified dispatch to upgrade to full structure response and request for an additional water tender. Defensive attack was initiated to protect any exposures. Water was pumped from supply from the road. Insufficient “water supply was an issue without the immediate response of the water tender.” Structure was a total loss.

Soda Canyon: need appropriate size apparatus, housed at the Station

March 10, 2008: structure (house) fire 2001 Soda Canyon Road, Napa. The incident location was only seven-tenths of a mile from the Soda Canyon Fire Station and yet it took 31 minutes from the time of the initial 911 call at 9:29pm, until the first engine arrived on the scene of the incident at 10:00pm.

Further (15 minutes after the initial 911 call) the residents of premises of the fire called 911 and gave the combination to the gate and the address so that firefighters were able to correctly locate the fire and gain entrance to the property. The electronic entrance gate did not have a rapid entry, emergency access key box. This is in noncompliance of California Fire Code, Section 506. See Appendix 6.

“The blaze was reported at 9:29pm. Approximately 30 firefighters (from the Soda Canyon and Rutherford fire departments) battled the blaze and declared the flames contained just after 11pm, according to CAL FIRE.”

Quote from Napa Valley Register, “*Dog sensed fire at Soda Canyon home on Monday night*”, March 12, 2008. *There was extensive fire damage to the roof and attic [estimated loss of \$400,000]. The rest of the house had heavy smoke damage....The rough terrain in the area made things difficult for firefighters. The driveway was only wide enough for one engine to reach the house. We had to lay about 2,500 feet of hose up the driveway to fight the fire. The firefighters had to hike in about half mile, all uphill. Shubin said.*

It would be reasonable to assume that if the local Fire Station had been properly equipped with a “running” engine, the volunteer firefighters responding to the Soda Canyon Station would have seen/located the fire and could have gotten to the fire sooner than the 31 minutes that it unfortunately took...however Engine 213 (1972) has not been listed as responding to an incident for many years. The Soda Canyon Volunteer firefighters currently respond out of the Napa-Monticello Station.

Quote from the Napa Valley Register, “*Fire Damages Soda Canyon home*”, March 11, 2008. *The Soda Canyon and Atlas Peak areas northeast of Napa have been the location of some dangerous blazes in recent years, including a 60-acre fire off Atlas Peak Road in July of 2007.*

According to the Draft Report, Citygate Associates, *the Soda Canyon Area of incident count over 24 month period: 594* (second highest in the Napa County).

Pope Valley: need appropriate size vehicles, designed for dirt roads

Napa Valley Register, “*Fire Engine ripped up while being pulled from mud*”, February 1, 2008. *January 18, 2008: Small grass fire near Aetna Springs. ...drove the engine down an old dirt road, and because of all the recent rain, the engine got stuck, Derum said. Firefighters laid hose from where the truck was stuck in the mud and put out the one-acre fire....The first tow truck was not able to recover the fire engine. So, [a second] tow truck...hooked up to the stranded engine and attempted to haul it out....the crippled fire engine was loaded onto a carrier and driven to the manufacturer in Woodland.*

The Grand Jury later learned that the fuel tank had (due to the design) been installed below the axle, hence when the engine became stuck, and it was virtually impossible to “pull” the engine out.

Volunteer Firefighter Training

Training is one of the most volatile issues regarding volunteer firefighters. The timing and quality of CAL FIRE-provided training was one of the most consistent complaints aired to the Grand Jury during our investigation. In addition, the level of training required for volunteer firefighters under California law would appear to have a significant impact on the ability to recruit and retain volunteer firefighters, and raises issues of financial liability for the County.

California Senate Bill 1207, sponsored by The California State Firefighter's Association and amended by Assembly Bill 2118, places all volunteer firefighters under the same California Occupational Safety and Health Administration (Cal OSHA) training and safety standards as full-time fighters. SB 1207 was to become effective January 1, 2002, but AB 2118 delayed implementation until January 1, 2004, to provide time to bring volunteer firefighters into compliance with the new law. The Napa County Board of Supervisors must take an active role in resolving County responsibility with respect to volunteer firefighters as County employees. Many of the volunteer firefighters see SB 1207 as an attempt by organized labor to eliminate volunteer firefighters, thereby creating the need for additional career firefighters. While the Grand Jury is sympathetic to the demands placed on volunteer firefighters, non-compliance with the law is not a viable option and places the County at risk.

The Grand Jury was unable to establish the specific hiring and annual training requirements externally mandated for Napa County volunteer firefighters. The Grand Jury found that Federal as well as Cal OSHA requirements must be considered and the Grand Jury was advised that the training requirements for a volunteer firefighter should be the same as those of the parent organization, in this case paid County firefighters. A paid firefighter must have completed Firefighter I training, specified physical examinations and agility tests before being assigned to a medical/fire crew. Firefighter I training includes certification as an Emergency Medical Technician (EMT). These firefighters are expected to obtain Certification as a Firefighter I (which adds on-the-job training to the initial Firefighter I training) within one year of hire. The above requirements are formally identified in CAL FIRE *Annual Firefighter Training Requirements (hours and content)* as well as the municipal fire department requirements.

NCFD personnel have stated that 72 to 120 hours of annual training is necessary for a firefighter to maintain proficiency and keep up with technological advances in medical care and firefighting. The NCFD does identify 36 hours per year of mandatory training for volunteer firefighters. This training is scheduled to be provided by CAL FIRE training representatives in twelve, three-hour sessions throughout the year.

The National Fire Protection Association publishes a *Standard for Fire Service Instructor Professional Qualification* (NFPA 1041). This standard defines three levels of increasing proficiency of fire service instructors. The Grand Jury was advised that assigned CAL FIRE instructors are not required to be qualified to these standards. The CAL FIRE Position Essential Functions Duties Statements (position description) for Battalion Chief, Training/Safety Office and for Training Captain do not reference this standard. One of

the duties of the Training Captain is to “instruct courses and drills.” The NCFD budget for the current year includes \$83,413 for one full time training fire captain.

While the Volunteer Fire Chiefs uniformly support the need for more and better training, they also generally acknowledge that six to ten hours of formal training per month for each volunteer is difficult to achieve.

The hiring and training policies of the nine Napa County Volunteer Fire Departments vary significantly. Other than passing an initial physical examination, there is no standard that a volunteer firefighter must meet before being assigned to medical or structure/wild land fires response teams within the county. The NCFD administration supports minimum hiring standards but states that it does not have the authority to impose these standards on individual volunteer fire departments.

Some departments aggressively pursue the formal training of new personnel, paying for this training with department funds. Others do not make formal “new hire” training a priority preferring instead to focus on “on-the-job” training. Some Napa volunteer firefighters do not possess the basic Emergency Medical Technician (EMT) qualification although 80-85% of fire department emergency calls are medical in nature.

For the physical safety of the individual volunteer, for the safety and protection of property of the citizens of Napa County, and to mitigate the financial liability of the County, minimum training standards must be established and enforced before a volunteer is permitted to respond to an emergency on behalf of the County. In addition, realistic annual training requirements for volunteer firefighters must be established and enforced. The Grand Jury believes that the County has a moral and legal responsibility to make the requisite initial and annual training available to qualified applicants within the manpower authorization levels specified for each individual Volunteer Fire company.

Volunteer Firefighter Compensation

Napa County volunteer firefighters are eligible to receive a monthly stipend of \$150/month for a fire chief, \$125/month for a company officer and \$100/month for a firefighter if they participate in the required training sessions each month. In many cases, this stipend does not even cover the volunteers’ monthly fuel costs for their automobiles in responding to emergencies and attending training sessions. This stipend is independent of the number of calls to which the volunteer responds. A more equitable approach would be to provide volunteer firefighters with a basic stipend augmented by an additional payment for each emergency response. Eligibility for this compensation would still depend upon attendance at required training.

The NCFD has suggested a three-tier compensation scheme for volunteer firefighters. The highest stipend would be for volunteers who meet the training and experience requirements to respond to medical emergencies, wildland fires and structural fires. A second tier would be for those volunteers who meet the training and experience requirements to respond to medical emergencies only (i.e., Emergency Medical

Technicians). The third tier, probably not eligible for a stipend, but retained on the rolls of the Volunteer Fire Department, would be those individuals who, for a variety of reasons, do not actually respond to emergency calls.

A revised compensation system based on the number of responses and the tiered pay scale would be a significant improvement over the current system.

Strike Teams

The Napa County Fire Department does mobilize and deploy strike teams to other areas outside of Napa County to support major emergencies. The recent fires in Southern California are an example of this. These strike teams may consist of paid and/or volunteer firefighters. When deployed on strike teams, the volunteer firefighters are paid. However, there is one significant anomaly regarding these deployments. The CAL FIRE firefighter union agreements require that the CAL FIRE firefighters be provided motel accommodations. Reimbursement to the County does not cover motels, so the deployed Volunteer firefighters must “camp out.” For the County to deploy a strike team of paid and volunteer firefighters and not provide equal accommodations for the volunteer firefighters is unsatisfactory in the opinion of this Grand Jury.

In the past, it has taken several months for the County to recover reimbursement costs for the strike teams. As a consequence, payment to the volunteer firefighters was often delayed for months. In fact, the County Fire Department does have a fund to permit timely payment of strike team volunteer firefighters. These funds should be made available on a routine basis to insure that volunteer firefighters are promptly compensated for their time.

A letter of appreciation from a Southern California homeowner to the Chief of the Dry Creek-Lokoya Volunteer Fire Department is included as Appendix 3 to this report.

Authorized Emergency Vehicles (AEV) Permits

An AEV Permit allows private vehicles, operated by the Volunteer Fire Chief, and others as indicated below, to be outfitted with lights and a siren so that they may respond “Code 3” to an emergency situation. The Vehicle Code of California, Division 2, Chapter 2, Article 3, Section 2416, states that, *The Commissioner of the Highway Patrol may issue authorized emergency vehicle permits only for the following vehicles, ... Any vehicle operated by the chief, assistant chief, or one other uniformed person designated by the chief of a fire department*

Senate Bill 1207 defines volunteer firefighters responding to an emergency as County employees. Napa County does not provide insurance for the private vehicles of volunteer firefighters, nor does it pay for the additional cost of AEV coverage. The State Insurance Commissioner’s office has stated, *the insurance code does not address a requirement that the insurance company needs to be notified if a private vehicle has been*

issued an emergency vehicle permit and is so equipped to respond to emergencies. Companies may have their own underwriting requirements regarding this. For the volunteer fire departments that do make use of AEV Permits, the Grand Jury has no way of determining if the private vehicles are adequately insured for this service.

The County does not mandate emergency response driver training for volunteer firefighters.

The AEV Permit application form, CHP Form 810, requires that the sponsoring fire department be identified. The California Highway Patrol provided the Grand Jury with the below listed data regarding Napa County Volunteer Fire Departments.

FIRE DEPARTMENT	No. of AEV Permits
Angwin Volunteer Fire Department	2
Capell Valley Volunteer Fire Department	0
Deer Park Volunteer Fire Department	1
Dry Creek/Lokoya Volunteer Fire Department	0
Edgerly Island Volunteer Fire Department	0
Gordon Valley Volunteer Fire Department	0
Pope Valley Volunteer Fire Department	0
Rutherford Volunteer Fire Department	1
Soda Canyon Volunteer Fire Department	0

In touring the Volunteer Fire Department facilities, it appeared to the Grand Jury that more private vehicles are outfitted for Code 3 response than is indicated in the above table.

COMMUNICATIONS

Effective communications are an essential element of disaster response. Effective communications are also an essential element in the day-to-day response to law enforcement, fire, and medical emergencies. Because of the complexity of the technological and procedural aspects of County emergency communications, a separate Grand Jury report will be dedicated to this subject.

LOCKS AND KEYS

California Fire Code, Section 506, requires that an approved rapid emergency entry gate switch or padlock be installed *where access to or within a structure or area is restricted because of secured openings or where immediate access is necessary for life-saving or fire-fighting purposes*. See Appendix 6.

Rapid Entry Systems are used by firefighters throughout the United States to provide access to normally locked areas such as buildings (outside normal working hours), gated

communities, etc. The basic system consists of a small lock box mounted on the building, or adjacent to the community gate, containing the facility access keys, access cards, elevator keys, etc. The lock box key is carried by firefighters. One of the oldest and largest providers of the rapid entry systems is the *Knox Company* of Phoenix, Arizona. For this reason, rapid entry systems are commonly referred to as "Knox locks". Rapid entry systems in Napa County use a common key system with the exception of the City of Saint Helena, the City of Napa and American Canyon which have their own unique key. The City of Calistoga is on the County system.

Therefore, firefighters responding to Napa County emergencies under mutual aid agreements may not be able to gain access to a facility without resorting to forced entry. Forced entry delays the response, results in unnecessary property damage and can result in injury to firefighters. The citizens of Napa County and their property are at added risk due to these unique key systems.

The Grand Jury acknowledges the response from the St. Helena City Manager regarding the changing of locks and the added expense to do so. The inherent responsibility of local government is the preservation of life, property and the environment. The Grand Jury poses the question: to what extent is the cost of changing locks compared to the value of protection it would provide to the citizens of Napa County?

COMMENDATION

It is a special kind of person who will risk his/her life to ensure the safety of others. The 2007-2008 Grand Jury commends with sincere gratitude the men and women of CAL FIRE, the Napa County Fire Department, the nine Volunteer Fire Departments, the 200 volunteer firefighters, and the cadre of paid firefighters for their countless hours of service to our community in the preservation of life, property and our environment. Napa County has a long and proud tradition of volunteer fire service, one that the Grand Jury hopes will continue.

FINDINGS

The 2007-2008 Grand Jury finds that:

1. Lack of Authority.
 - a. the MOU between the County of Napa and Volunteer Departments does appear to give authority to the Napa County Fire Chief to establish and enforce volunteer department hiring, training/operating policies and procedures, however subsequent provisions within the MOU take that authority away.
 - b. the County has not evaluated the operation of all Napa County fire departments.
2. Training Problems:
 - a. Based on Federal, State, Cal OSHA, and County requirements, Napa County has not defined the minimum acceptable level of training for new

volunteer firefighters and continued training for all volunteer firefighters as County employees.

- b. procedural requirements impacting the safety of firefighters and the public alike, dating at least to 1996, have not been fully developed and enforced.
 - c. the hiring and training policies of the nine Volunteer Fire Departments vary significantly and it is unclear whether specific hiring and training requirements exist.
 - d. some Napa County Volunteer firefighters do not possess the basic EMT qualifications although 80-85% of fire department emergency calls are medical in nature.
 - e. firefighter instructors assigned to Napa County volunteer firefighters have no specific experience qualifications in their job descriptions.
 - f. the NCFD budget for current year includes \$83,143 for one fulltime training fire captain.
3. the Board of Supervisors has not insured that the provisions of the County/NCFD were fully implemented.
 4. the NCFD has apparently not always maintained the training certificates and other records that were submitted to it by the Volunteer Fire Departments.
 5. there is broad support among County firefighters for an integrated County fire department that includes all the fire departments in the County.
 6. of the authorized 250, there are now less than 200 Volunteer firefighters, a decline of 20% over the past five years. Napa County cannot afford to replace Volunteer firefighters with paid firefighters, nor would this be desirable.
 7. the volunteer stipend system neither reflects the number of response calls which a volunteer makes nor rewards volunteers for advanced qualifications.
 8. NCFD Policies and Procedures:
 - a. the upgrading of the NCFD Policies and Procedures Manual, which was to have been completed by 1998, has not been addressed, the Manual does not contain a grievance procedure, nor does it define volunteer Firefighter Driver/Operator requirements.
 9. Strike Teams:
 - a. Volunteer firefighters who are part of a County deployed strike team are not provided accommodations equal to their paid counterparts.
 - b. it takes several months for Volunteer firefighters who were part of a County deployed strike team to be paid for their time.
 - c. the NCFD has a fund to permit timely payment of strike team volunteer firefighters.
 10. AEV:
 - a. no training/qualifications requirements exist for AEV drivers.
 - b. there is no system to verify if AEV drivers have their vehicles properly insured.
 - c. the County does not reimburse individual volunteer firefighters for any additional insurance premium costs incurred for the operation of authorized AEVs.
 11. Fire Stations:

- a. the current location of Station #10 imposes significant travel requirements for responding volunteers.
- b. there is no sign or street light on the road to indicate the entrance to the Capell Valley Volunteer Fire Department.
- c. the Carneros Volunteer Fire Department, Milton Road station is old, sits in the flood plain and is in need of upgrading.
- d. the Carneros satellite building leaks profusely when it rains and paved parking is limited for responding Volunteer firefighters.
- e. the Dry Creek-Lokoya Volunteer Fire Department station needs running water, a septic system, a flush toilet and an exhaust system.
- f. the Soda Canyon Volunteer Fire station needs potable water and a water system upgrade.
- g. the Soda Canyon Volunteer Fire station has no usable apparatus at this fire station, so responds from the Monticello Fire station. Response time has been extended to an unacceptable 30+ minutes to some areas within the Soda Canyon service area.
- h. the Soda Canyon Volunteer Fire station driveway/volunteer parking is currently restricted by new neighbor entrance/gate in noncompliance with Napa County Code, Title 18.

12. Apparatus:

- a. three NCFD engines and one water tender predate 1985, and eleven engines and one rescue vehicle predate 1991.
- b. the above stated vehicles do not meet current NCFD 1901 safety standards for fire apparatus.
- c. the Gordon Valley Volunteer Fire Department needs a water tender.
- d. the Soda Canyon Volunteer Fire Department needs a smaller Type IV unit (suitable for the smaller country roads, dirt roads, smaller driveways and bridges characteristic of the area) to be housed at the Soda Canyon station.
- e. the Soda Canyon Volunteer Fire Department needs a rescue truck with defibrillator housed at the Soda Canyon station.

13. Fundraising:

- a. many of the nine Volunteer Fire Departments do annual fundraising for capital improvements and other department needs.
- b. proceeds from the *Carneros Run 2008*, are to benefit the Carneros Volunteer Fire Department new building fund.
- c. proceeds from the *Winemakers Classic* are to benefit the Dry Creek-Lokoya capital campaign for expanded station construction.

- 14. the Soda Canyon Volunteer Fire Department service area has the second highest number of emergency incidents in Napa County.
- 15. the NCFD has modified the makeup of the selection committee charged with specifying the purchase of "appropriate sized emergency response vehicles" to the area of service.
- 16. California Fire Code requires that an approved rapid emergency entry gate switch or padlock be installed *where access to or within a structure or area is restricted because of secured openings or where immediate access is necessary for life-saving or fire-fighting purposes.*

17. much of Napa County is considered a high fire hazard environment.
18. Napa County residents who live in rural areas can expect an emergency response time of 14 minutes; Napa County residents who live in remote (travel distance of ≥ 8 miles) can expect emergency response time of 14+ minutes or more.

RECOMMENDATIONS

The 2007-2008 Grand Jury recommends that:

1. the County Board of Supervisors establish a commission to review the overall operation of all Napa County fire departments with respect to the establishment of a central Napa County Fire Department.
2. the County Board of Supervisors consider the hire of a dedicated Napa County employee whose primary responsibility would be to focus on the coordination and support of the County Volunteer firefighters.
3. the MOU between the County of Napa and Volunteer Departments be amended to grant the Napa County Fire Chief clear authority to establish and enforce volunteer department training and operating policies and procedures.
4. recognizing that volunteer firefighters are effectively county employees while engaged in fire department activities, Napa County establish a level of training that meets all applicable Federal, State, Cal OSHA and County requirements. Non-compliance with the law is not a viable option and places the County at risk.
5. all Volunteer firefighters be trained and certified as Firefighter I/EMTs, and the training be provided and paid for by the County.
6. all training of volunteer firefighters be provided by fully qualified instructors meeting all applicable standards.
7. the upgrading of the Napa County Fire Department Policies and Procedures Manual be addressed as a high priority with specific timeline goals established and monitored. Specific policies which must be implemented immediately are:
 - a. A grievance procedure which provides a mechanism for the department personnel to raise and address issues which adversely affect their abilities to perform duties, personnel problems, and accusation of wrongdoing.
 - b. Volunteer Firefighter Driver/Operator requirements be formally defined. Existing drivers should be given adequate time to complete the requirements, but not "grandfathered."
 - c. minimum emergency response driver training standards for AEV drivers be established.
 - d. all new AEV drivers be required to complete the training prior to operating their vehicles in a Code 3 response.
 - e. existing AEV drivers be given a reasonable time to complete the requisite training, but not be "grandfathered."
 - f. the County require that the owners of private vehicles operating as an AEV provide written evidence that they either have an appropriate AEV rider on their vehicle insurance or written documentation from their insurance company that the vehicle is covered while operating as an AEV.

- g. the County establish a policy that details equal accommodations for Volunteer firefighters who are part of a County deployed strike team to that of their paid counterparts.
8. the volunteer stipend be based on the number of emergency responses made by the volunteer while retaining the training requirement as an eligibility criteria. In addition, a tiered compensation system which rewards advanced qualifications be implemented.
9. the County fund the required emergency response driver training for volunteer firefighters.
10. the County reimburse individual volunteer firefighters for any additional insurance premium costs incurred for the operation of properly authorized AEVs.
11. the funds to pay a Volunteer firefighter who was part of a County deployed strike team be made available on a routine basis and in a timely manner to insure that they are promptly compensated for their time.
12. Fire Stations:
 - a. relocate the Station #10 to a combined Napa City/County fire station in Browns Valley.
 - b. the County install a road sign and light on the road at the entrance to the Capell Valley Volunteer Fire Station.
 - c. the County rectify the restricted access/parking issue at the Soda Canyon Fire Station regarding new neighbor entrance gate.
13. Apparatus:
 - a. the County replace as soon as possible, all firefighting vehicles that predate 1991, with vehicles that are appropriate for the individual service area requirements.
 - b. the County provide as soon as possible, a water tender to Gordon Valley Volunteer Fire Department.
 - c. the County provide as soon as possible, a Type IV unit and a rescue vehicle with defibrillator that will fit into and be housed at Soda Canyon station.
14. the NCFD continue the policy of consulting the Volunteer Chief or appointed representative from a given volunteer fire department when equipment is being selected for their use.
15. all fire departments within Napa County have the same rapid entry system locks with a "universal" Key.
16. Volunteer fire departments receive greater support from the County and in return, relinquish some of their long held independence.

REQUEST FOR RESPONSES

The 2007-2008 Grand Jury requests responses from:

- The Napa County Board of Supervisors to all the above.
- The Napa County Fire Chief to all of the above, except #12.
- Chiefs: City of Napa, and Calistoga Fire Departments to Recommendation #15

- All Volunteer Napa County Fire Chiefs (optional response as per discretion of each)

GLOSSARY

AEV---Authorized Emergency Vehicle

CAD---Computer Aided Dispatch

Cal OSHA---California Occupational Safety and Health Administration

CDF---aka CAL FIRE, California Department of Forestry and Fire Protection

Code 3---Responding with lights and siren

ECC---Emergency Command Center

EMT---Emergency Medical Training

gpm---gallons per minute

H&SC---Health & Safety Code

NCFD--- Napa County Fire Department

NFPA---National Fire Protection Association

SOP---Standard Operating Procedure

VCAB---Volunteer Chiefs Advisory Board

APPENDIX

Appendix 1: CAL FIRE Scope of Work

Under Public Resources Code Section 4114 and other provisions of law, STATE maintains fire prevention and fire suppression forces including the necessary equipment, personnel including "volunteers", and facilities required to prevent and extinguish forest fires.

Purpose of this agreement is to provide mutually advantageous fire and emergency services through an effective consolidated organization, wherein the STATE is primarily financially responsible for protecting natural resources from forest fires and the LOCAL AGENCY is primarily financially responsible for protecting life and property from fires and other emergencies. The LOCAL AGENCY shall have sole authority to establish the fire protection organization and structure needed to meet the determined level of service. This level of service may be based on the LOCAL AGENCY governing board's established fiscal parameters and assessment of risks and hazards. Wherein Exhibit D, Schedule C, LOCAL AGENCY employees, are included as part of this agreement, the personnel providing the LOCAL AGENCY's services under this agreement may include anyone or a combination of the following: regular employees, persons temporarily employed and commonly known as volunteers (whether regularly registered, summoned pursuant to Public Resources Code Section 4153, or working without compensation), paid-call firefighters, or others temporarily employed to perform any emergency work or emergency service including, but not limited to fire prevention, fire suppression and emergency medical response.

1. FIRE PROTECTION SERVICES TO BE PROVIDED BY THE STATE

STATE provides a modern, full service fire protection and emergency incident management agency that provides comprehensive fire protection and other emergency incident response. STATE designs regional fire protection solutions for urban and rural communities by efficiently utilizing all emergency protection resources. Regional solutions provide the most effective method of protecting the citizens of California at local, county and state levels.

Fire protection services to be provided by STATE under this agreement shall include the following:

1) Emergency fire protection, emergency response and basic life support: services include commercial, residential, and wildland fire protection, prevention and investigation; hazardous materials incident response; emergency vehicle extrication; hazardous conditions response (flooding, downed power lines, earthquake, terrorist incident, etc.); Emergency Medical Technician (EMT) level emergency medical and rescue response; public service assistance. Also included are management support services that include fire department administration, training and safety, personnel, finance and logistical support.

3) Dispatch Services: provide fire department 9-1-1 emergency dispatch by CAL FIRE/Emergency Command Center (ECC). CAL FIRE will be responsible for fire/emergency dispatching emergency resource units covered under this agreement. The CAL FIRE/ECC is staffed with a Battalion Chief, three or more Fire Captains and Dispatch Clerks to provide 7/24 year-round coverage. There is always an officer of Captain rank or higher to serve as the shift supervisor and command officer. CAL FIRE uses an integrated Computer Aided Dispatch (CAD) system using the latest technology, to direct the closest available resources to all emergency incidents.

4) Fire Code Inspection, Prevention and Enforcement Services: CAL FIRE has staff Fire Inspectors serving under the direction of the County Fire Marshal to provide services to the area covered by this agreement. Fire Code Enforcement will normally be available five days per week, with emergency or scheduled enforcement inspections available seven days per week. Fire Prevention and Investigation services will be provided by CAL FIRE Prevention Officers trained in arson, commercial, and wildland fire investigation. Officers are trained at CAL FIRE's POST certified law enforcement training academy and they cooperate effectively with all local, state and federal law enforcement agencies.

5) Land Use/ Pre-Fire Planning Services: CAL FIRE staff will provide community land use planning, administration of Pre-Fire project work, including community outreach, development of community education programs, project quality control, maintenance of project records and submittal of progress reports, completion of required environmental documentation, acquisition of required permits and completion of other associated administrative duties.

8) Extended Fire Protection Service Availability (Amador)

2. ADMINISTRATION

Under the requirements of California Public Resources Code Section 4114 and other provisions of law, STATE maintains fire prevention and firefighting services as outlined in Exhibit D, Schedule B of this agreement.

- A. Director shall select and employ a Region Chief who shall, under the direction of the Director/Chief Deputy Director, manage all aspects of fire prevention and fire protection services and forestry-related programs.
- B. Director will select and employ a State Forest Officer referred to as Unit Chief who shall, under the supervision and direction of Director or a lawful representative, have charge of the organization described in Exhibit D, Schedules A, Band C included hereto and made a part of this agreement.
- C. LOCAL AGENCY may appoint, with the concurrence of the Region Chief, which concurrence shall not be unreasonably withheld, the Unit Chief as the LOCAL AGENCY Fire Chief pursuant to applicable statutory authority.
- D. The Unit Chief may dispatch personnel and equipment listed in Exhibit D, Schedules A, B and C from the assigned station or location under guidelines established by LOCAL AGENCY and approved by STATE. Personnel and/or equipment listed in Exhibit D, Schedule B may be dispatched at the sole discretion of STATE.
- E. The Unit Chief shall exercise professional judgment consistent with STATE policy and his or her employment by STATE in authorizing or making any assignments to emergencies and other responses, including assignments made in response to requests for mutual aid.
- F. Except as may be otherwise provided for in this agreement, STATE shall not incur any obligation on the part of LOCAL AGENCY to pay for any labor, materials, supplies or services beyond the total set forth in the respective Exhibit D, Schedules A and C, as to the services to be rendered pursuant to B Schedule.
- G. Nothing herein shall alter or amend or be construed to alter or amend any Collective Bargaining Agreement or Memorandum of Understanding between the State of California and its employees under the State Employer-Employee Relations Act.

3. SUPPRESSION COST RECOVERY

As provided in Health and Safety Code (H&SC) Section 13009, STATE may bring an action for collection of suppression costs of any fire caused by negligence, violation of law, or failure to correct noticed fire safety violations. When using LOCAL AGENCY equipment and personnel under the terms of this agreement, STATE may, at request of LOCAL AGENCY, bring such an action for collection-of costs incurred by LOCAL AGENCY. In such a case LOCAL AGENCY appoints and designates STATE as its

agent in said collection proceedings. In the event of recovery, STATE shall apportion to LOCAL AGENCY its pro-rata proportion of recovery, less the reasonable pro-rated costs including legal fees.

In all such instances, STATE shall give timely notice of the possible application of H&SC Section 13009 to the representative designated by LOCAL AGENCY.

4. MUTUAL AID

When rendering mutual aid or assistance as authorized in H&SC Sections 13050 and 13054, STATE may, at request of LOCAL AGENCY, demand payment of charges and seek reimbursement of LOCAL AGENCY costs for personnel, equipment and operating expenses as funded herein, under authority given by H&SC Sections 13051 and 13054. STATE, in seeking said reimbursement pursuant to such request of LOCAL AGENCY, shall represent LOCAL AGENCY by following the procedures set forth in H&SC Section 13052. Any recovery of LOCAL AGENCY costs, less expenses, shall be paid or credited to LOCAL AGENCY, as directed by LOCAL AGENCY.

In all such -instances, STATE shall give timely notice of the possible application of H&SC Sections 13051 and 13054 to the officer designated by LOCAL AGENCY.

5. PROPERTY ACCOUNTING

All personal property provided by LOCAL AGENCY and by STATE for the purpose of providing fire protection services shall be marked and accounted for by the Unit Chief in such a manner as to conform to the regulations, if any, established by the parties for the segregation, care, and use of the respective properties.

Appendix 2: NCFD Policy and Procedures Manual Contents

<u>No.</u>	<u>Title</u>
2004-1	Respiratory Protection Program
2004-2	Volunteer Stipend Program
2005-2	Standard Complement: Water Tender
2005-3	Standard Complement: Type 1 Heavy Engine
2005-4	Standard Complement: Type 1 Light Engine
2005-5	Issuance/Tracking of Personal Protective Equipment
2005-6	Monthly Drill Responsibility
2005-9	S.O.P. Submission/Approval Process
2006-10	Emergency Evacuation Signal
2006-14	Personal Protective Equipment Use
2006-15	Accountability Program

Appendix 3: Letter of Appreciation

November 5, 2007

Napa County Fire Department
Dry Creek-Lokoya
5900 Dry Creek Road
Napa, CA 94558

Dear Chief:

We would like to express our gratitude and admiration to you, your crew, and the other Napa County fire units that protected our home in Alpine on the nights of October 25 and 26 during the Harris fire. You and your men were professional, friendly, and comforting.

We believe the Napa County Fire Department represents all that's right with California and the Nation.

Sincerely,

Appendix 4: Description of Firefighting Vehicle Types

- Engines: (Pumper, Wagon and Foam-Pumper) an apparatus equipped with a fire pump of at least 750 gpm capacity, water tank with a minimum of 300 gallons. The apparatus must be manufactured and equipped in accordance with NVPA Standard 1901. Variations include: Engine, Pumper, Foam Pumper, CAFS Pumper, Type I, Quint with ladder <76 feet
- Brush Engine: (grass truck or rig, patrol, attack, mini-pumper, booster, CAFS, etc) a small apparatus primarily designed for fighting wild land fires and is often equipped with four-wheel drive to improve its off-road capabilities. The vehicle must be manufactured and equipped to comply with NVPF 1906.
- Tanker (tender, tanker) a vehicle designed to transport large quantities of water to fires in areas without an adequate and reliable public water system. Tank sizes are normally 1000 gallons or greater with a pump with less than 750 gpm capacity and the vehicle must be manufactured and equipped in accordance with NFPA Standard 1901 for tanker. The vehicle may or may not be equipped with a fire pump.
 - Tanker
 - Foam Tanker
 - Tender
 - Type I-IV: California Minimum Standards
 - Engine Type I
 - Pump: 1000 gpm, Tank: 400 gal, Hose 2 ½" : 1200 ft, Hose 1 ½": 200 ft., Ladder: 20 ft extension, Master Stream, 500 gpm, Personnel: 4
 - Engine Type II
 - Pump: 500 gpm, Tank 400 gal, Hose 2 ½": 1000 ft., Hose 1 ½": 500 ft., Hose 1": 300 ft., Ladder: 20 ft. extension, Master Stream: -, Personnel 3
 - Engine Type III

- Pump: 120 gpm, Tank 300 gal, Hose 2 ½”:-, Hose 1 ½”: 1000 ft., Hose 1”: 800 ft., Ladder: -, Master Stream:-, Personnel 3
 - Engine Type IV
 - Pump: 40 gpm, Tank 200 gal, Hose 2 ½” -, Hose 1 ½” 300 ft., Hose 1” 500 ft., Ladder: -, Master Stream -, Personnel 3
- Rescue – Squad (Rescue; variations include Light, Medium, Heavy) a piece of apparatus that is designed to carry specialized equipment to perform non-routine, technical rescues to include but not limited to, vehicle extrication, building collapse, trench or below grade, water, high angle, confined space, etc. Variations include: Light, Medium, and Heavy; Technical Rescue Units
- EMS and Other
 - Other: A specialized vehicle that includes:
 - Ambulances
 - Air/Light Units
 - Rehab Units
 - Fire Boats
 - Ambulance: a vehicle that is licensed and equipped to treat and transport the sick and injured to a medical facility.
- Water Tender 500 – 3,000 gallon capacity
- Utility
- Trucks

Appendix 5: NCFD Replacement Criteria

- | | |
|----------------------|---------------------|
| • Volunteer Engines | 18 yr/120,000 miles |
| • Rescue | 18 yr/120,000 miles |
| • Water Tender | 18 yr/120,000 miles |
| • Career Engines | 8 yr/120,000 miles |
| • Utilities | 8 yr/ 90,000 miles |
| • Mechanics Vehicles | 8 yr/150,000 miles |
| • Trucks | 10 yr/120,000 miles |

Three NCFD engines and one water tender predate 1985 and eleven engines and one rescue predate 1991; they do not meet current NFPA 1901 safety standards for fire apparatus.

Appendix 6: California Fire Code – Key Boxes

Section 506 Key Boxes

506.1 Where required. Where access to or within a structure or an area is restricted because of secured openings or where immediate access is necessary for life-saving or fire-fighting purposes, the fire code official is authorized to require a key box to be installed in an approved location. The key box shall be of an approved type and shall contain keys to gain necessary access as required by the fire code official.

506.1.1 Locks. An approved lock shall be installed on gates or similar barrier when required by the fire code official.

506.2 **Key box maintenance.** The operator of the building shall immediately notify the fire code official and provide the new key when a lock is changed or rekeyed. The key to such lock shall be secured in the key box.

Appendix 7: Napa County Code

NAPA COUNTY CODE: Title 18: Zoning

18.104.270 Fences.

A. No fence in excess of forty-two inches in height shall be constructed in the designated front yard of any lot within a RS, RD, RM, PD, CN, CL, MC, or OC district. No fence or structure in the nature of a fence in excess of seventy-two inches in height shall be constructed on any lot line, or in any required yard in these districts.

B. In any CN, CL, MC, GC, and IP districts or :RVP combination district, all fencing must be specified by use permit.

C. In any GI or I district, fencing shall be permitted in required yards as necessary to provide effective screening and security for permitted uses. All fencing shall be specified by use permit or approved site plan

D. In an AP or AW district, fence height standards are as follows:

1. On a parcel containing two acres or less, standards of the RS district shall apply.
2. On all other parcels in these districts, a fence that exceeds a height of forty-two inches in any required yard or setback area shall be see-through in nature (e.g., deer-or other wire, chain link, etc.), unless a special fence use permit is granted pursuant to Section 18.104.270(D)(3).
3. A special fence use permit may be granted by the zoning administrator for solid fencing in excess of forty-two inches when the total fence height is not greater than ninety-six inches (eight feet), provided that need can be demonstrated for the proposed fence design.
4. No fence in these districts may exceed ninety-six inches (eight feet) in height unless a special fence use permit therefore is approved by the commission or unless specifically included within another use permit for the land use.

E. In an RC district, fence height standards are as follows:

1. On a parcel containing two acres or less, standards of the RS district shall apply.
2. On a parcel containing more than two, but less than twenty acres, no fence height within or behind the setbacks and yards shall exceed seventy-two inches (six feet).
3. On a parcel containing twenty acres or more, standards of the AP/AW districts shall apply except that any fencing or portion thereof exceeding seventy-two inches in height shall be set back at least twenty feet from a public road right-of-way.

F. For the purposes of this section, fence heights shall be measured from natural grade. (Ord. 1107)

18.104.275 Entry structures.

A. In the AP and AW districts, notwithstanding required yard setbacks, or other standards in this section. A multi-parcel ranch, or a parcel that contains more than one hundred sixty acres in the AW district or forty acres in the AP district, or a parcel that contains a conditionally approved use, may be permitted, with a use permit, to install one entry structure in connection with the primary vehicular entry to the property if it meets all the following standards:

1. Entry structures must be permitted by separate use permit, or specifically included within another use permit for the land use.
2. No part of an entry structure may exceed sixteen feet six inches in height, nor provide a vertical clearance of more than fifteen feet.
3. If an entry structure is connected to a fence, or to another structure, such fence or structure may not exceed the applicable height limits for such use.
4. No newly constructed portion shall encroach upon the applicable visibility requirements for typical intersections and driveways of the department of public works.
5. Open gates, and vehicles waiting for gates to open, may not physically obstruct any public road or private road used by the public. No entry structure shall be designed to provide for rear-ward entry of vehicles onto a public right-of-way. No turnaround area associated with an entry structure shall include any part of a public right-of-way.
6. Signs integral to an entry structure (e.g., lettering (other than a street number) built into a stone wall or driveway arch) shall also comply with the standards of Chapter 18.1 16 of this code (except for height), and shall be specifically identified as part of a use permit or sign permit.
7. Within required yards and setbacks, other than the setback for wineries specified in Section 18.104.230, any solid portion of an entry structure that exceeds forty-two inches in height may be approved only if the zoning administrator or planning commission makes all of the findings.
 - a. The appearance of any solid portions above forty-two inches high would be compatible with the scenic corridor of candidate scenic highways or routes designated by the Napa County general plan;
 - b. The architectural design of the entry structure as a whole would be improved by such height;
 - c. Each element of height that exceeds seventy-two inches (six feet) is needed for a functional purpose, and is harmonious with the balance of the Structure.

PASSED and **ADOPTED** by the 2007-2008 Napa County Grand Jury on this 10th day of April, 2008.



William E. Trautman
Foreperson

EXHIBIT “19”

EXHIBIT “19”

EXHIBIT “19”

NAPA COUNTY SHERIFF'S DEPARTMENT**Calls for Service - Soda Canyon Road****January 9, 2014 to March 6, 2017**

Daytime Calls (6am-6pm): 364

Nighttime Calls (6pm-6am): 134

Total Calls: 498

	ACT DATE	ACT TIME	NATURECODE	STREET
1	1/9/2014	2235	1030	SODA CANYON RD / SODA SPRINGS RD
2	1/10/2014	1751	TC	SILVERADO TRL / SODA CANYON RD
3	1/15/2014	1855	23152	SILVERADO TRL / SODA CANYON RD
4	1/17/2014	1634	488	SODA CANYON RD
5	2/1/2014	2230	415	SODA CANYON RD
6	2/7/2014	1128	1033	SODA CANYON RD
7	2/8/2014	1137	PATROL	SODA CANYON RD
8	2/9/2014	1803	1125	SILVERADO TRL / SODA CANYON RD
9	2/10/2014	120	1030	SODA CANYON RD
10	2/12/2014	1737	RECK	SILVERADO TRL / SODA CANYON RD
11	3/1/2014	1219	ASO	SODA CANYON RD
12	3/1/2014	1352	ASO	SODA CANYON RD / SODA SPRINGS RD
13	3/2/2014	1458	ASO	LOMA VISTA DR / SODA CANYON RD
14	3/3/2014	1051	LOST	LOMA VISTA DR / SODA CANYON RD
15	3/5/2014	1659	TRES	SODA CANYON RD / SODA SPRINGS RD
16	3/6/2014	1342	ASO	SODA CANYON RD
17	3/10/2014	1037	1125	SILVERADO TRL / SODA CANYON RD
18	3/12/2014	1344	TRES	SODA CANYON RD
19	3/27/2014	741	PEDCK	SODA CANYON RD
20	3/29/2014	1106	ASO	SODA CANYON RD
21	3/30/2014	1531	488	SODA CANYON RD
22	3/31/2014	920	ASO	SODA CANYON RD
23	4/1/2014	845	10851	SODA CANYON RD
24	4/3/2014	2109	CODE11	SODA CANYON RD
25	4/4/2014	1238	ASO	SODA CANYON RD / SODA SPRINGS RD
26	4/4/2014	1237	FOUND	SODA CANYON RD
27	4/5/2014	1420	ASO	SODA CANYON RD / SODA SPRINGS RD
28	4/5/2014	1420	ASO	SODA CANYON RD / SODA SPRINGS RD
29	4/5/2014	1653	ASO	SODA CANYON RD / SODA SPRINGS RD
30	4/10/2014	1232	1033	SODA CANYON RD
31	4/12/2014	927	PATROL	SILVERADO TRL / SODA CANYON RD
32	4/15/2014	2016	1033	SODA CANYON RD
33	4/15/2014	38	OVERD	SODA CANYON RD
34	4/17/2014	2233	TS	SILVERADO TRL / SODA CANYON RD
35	4/20/2014	1731	23152	SILVERADO TRL / SODA CANYON RD
36	4/20/2014	2025	23152	SILVERADO TRL / SODA CANYON RD
37	4/20/2014	2113	23152	SILVERADO TRL / SODA CANYON RD
38	4/28/2014	1132	CHEST	SODA CANYON RD
39	4/30/2014	1227	PATROL	SODA CANYON RD

40	5/1/2014	37	FU	SODA CANYON RD CNTY
41	5/2/2014	1756	23152	SILVERADO TRL / SODA CANYON RD
42	5/2/2014	842	GDUMP	LOMA VISTA DR / SODA CANYON RD
43	5/7/2014	1306	ABDOM	SODA CANYON RD
44	5/7/2014	1259	PATROL	SODA CANYON RD
45	5/10/2014	1503	1033	SODA CANYON RD
46	5/10/2014	1504	1033	SODA CANYON RD
47	5/10/2014	1714	SHOTS	SODA CANYON RD
48	5/11/2014	728	SEIZU	SODA CANYON RD
49	5/19/2014	930	ASO	SODA CANYON RD CNTY
50	5/21/2014	1622	CODE11	SODA CANYON RD
51	5/28/2014	2047	CODE11	SODA CANYON RD
52	5/29/2014	1622	23152	SILVERADO TRL / SODA CANYON RD
53	5/30/2014	2023	1030	SODA CANYON RD
54	6/6/2014	1227	PATROL	SODA CANYON RD
55	6/7/2014	2136	415	SODA CANYON RD
56	6/9/2014	2215	1030	SODA CANYON RD / SODA SPRINGS RD
57	6/17/2014	1352	488	SODA CANYON RD
58	6/17/2014	1354	594	SODA CANYON RD
59	6/18/2014	952	FU	SODA CANYON RD
60	6/19/2014	1214	PATROL	SODA CANYON RD
61	6/21/2014	1700	RECK	SILVERADO TRL / SODA CANYON RD
62	6/22/2014	1758	TRES	SODA CANYON RD
63	6/26/2014	1903	23152	SILVERADO TRL / SODA CANYON RD
64	6/26/2014	1416	FRAUD	SODA CANYON RD
65	6/28/2014	1054	1125	SODA CANYON RD
66	7/3/2014	1136	PATROL	SODA CANYON RD
67	7/3/2014	1451	RECK	SILVERADO TRL / SODA CANYON RD
68	7/5/2014	1851	CODE11	SILVERADO TRL / SODA CANYON RD
69	7/11/2014	30	TRAUM	SODA CANYON RD
70	7/12/2014	1710	TRES	SODA CANYON RD
71	7/15/2014	1823	459	SODA CANYON RD
72	7/16/2014	1208	FU	SODA CANYON RD
73	7/16/2014	1158	PATROL	SODA CANYON RD
74	7/17/2014	1740	FU	SODA CANYON RD
75	7/20/2014	1654	23152	SILVERADO TRL / SODA CANYON RD
76	7/21/2014	1108	487	SODA CANYON RD
77	7/21/2014	1231	FU	SODA CANYON RD
78	7/22/2014	1217	RECK	SILVERADO TRL / SODA CANYON RD
79	7/24/2014	1314	FU	SODA CANYON RD CNTY
80	7/24/2014	1319	FU	SODA CANYON RD CNTY
81	7/24/2014	1322	FU	SODA CANYON RD CNTY
82	7/29/2014	1124	PATROL	SODA CANYON RD
83	7/30/2014	2024	415	SILVERADO TRL / SODA CANYON RD
84	7/30/2014	508	HAZCON	SILVERADO TRL / SODA CANYON
85	8/1/2014	1426	GDUMP	SODA CANYON RD
86	8/13/2014	1027	VCK	SILVERADO TRL / SODA CANYON RD

87	8/15/2014	1214	PATROL	SODA CANYON RD
88	8/17/2014	1355	VCK	SODA CANYON RD
89	8/26/2014	1119	PATROL	SODA CANYON RD
90	8/30/2014	2129	459	SODA CANYON RD
91	9/3/2014	1136	PATROL	SODA CANYON RD
92	9/5/2014	1337	FRAUD	SODA CANYON RD
93	9/6/2014	1211	RECK	SODA CANYON RD / SODA SPRINGS RD
94	9/8/2014	1054	VCK	LOMA VISTA DR / SODA CANYON RD
95	9/10/2014	954	TC	SODA CANYON RD
96	9/12/2014	648	ASO	SILVERADO TRL / SODA CANYON RD
97	9/13/2014	1637	23152	SILVERADO TRL / SODA CANYON RD
98	9/17/2014	1325	ASO	SODA CANYON RD
99	9/18/2014	1320	ASO	SODA CANYON RD CNTY
100	9/19/2014	916	ASO	SODA CANYON RD CNTY
101	9/20/2014	1614	TRES	SODA CANYON RD / SODA SPRINGS RD
102	9/20/2014	1639	VCK	SODA CANYON RD / SODA SPRINGS RD
103	9/22/2014	2224	PATROL	SODA CANYON RD
104	9/25/2014	1826	NSIB	SODA CANYON RD
105	9/25/2014	1826	SEARCH	SODA CANYON RD
106	9/25/2014	2008	NSIB	SODA CANYON RD
107	10/3/2014	1402	UNCON	SODA CANYON RD
108	10/4/2014	2309	415	SODA CANYON RD
109	10/6/2014	1050	TC	SODA CANYON RD
110	10/6/2014	1313	TRES	SODA CANYON RD
111	10/8/2014	1505	ASSAU	SODA CANYON RD
112	10/9/2014	2126	PATROL	SODA CANYON RD
113	10/10/2014	1521	1030	SODA CANYON RD CNTY
114	10/10/2014	39	1033	SODA CANYON RD
115	10/10/2014	1344	CA	SODA CANYON RD
116	10/10/2014	923	PATROL	SODA CANYON RD
117	10/10/2014	1108	PATROL	SODA CANYON RD
118	10/10/2014	1321	PATROL	SODA CANYON RD
119	10/13/2014	1104	TRES	SODA CANYON RD
120	10/14/2014	1452	1033	SODA CANYON RD
121	10/14/2014	804	CA	SODA CANYON RD
122	10/17/2014	215	1033	SODA CANYON RD
123	10/22/2014	1440	WCK	SODA CANYON RD
124	10/26/2014	1354	CA	SODA CANYON RD
125	10/28/2014	1011	PATROL	SODA CANYON RD
126	10/28/2014	1444	PATROL	SODA CANYON RD
127	11/3/2014	420	ABDOM	SODA CANYON RD
128	11/4/2014	1754	ATC	SODA CANYON RD
129	11/8/2014	651	BREATH	SODA CANYON RD
130	11/8/2014	2305	CODE11	SODA CANYON RD
131	11/17/2014	1318	TRAUM	SODA CANYON RD
132	11/28/2014	737	1033	SODA CANYON RD
133	11/28/2014	1611	ATC	SODA CANYON RD

134	11/28/2014	2003	RECK	SILVERADO TRL / SODA CANYON RD
135	12/3/2014	2105	DRUG	SODA CANYON RD
136	12/5/2014	1011	CODE11	SODA CANYON RD
137	12/15/2014	936	MEDIC	SODA CANYON RD
138	12/16/2014	458	1125	SODA CANYON RD
139	12/19/2014	956	CIVIL	SODA CANYON RD
140	12/24/2014	2314	23152	SILVERADO TRL / SODA CANYON.RD
141	1/12/2015	1527	ACK	SILVERADO TRL / SODA CANYON RD
142	1/18/2015	2336	ACK	SODA CANYON RD
143	1/19/2015	2020	TRES	SODA CANYON RD
144	1/20/2015	924	594	SODA CANYON RD
145	1/20/2015	1433	FU	SODA CANYON RD
146	1/20/2015	1706	PATROL	SODA CANYON RD
147	1/22/2015	1220	TS	SILVERADO TRL / SODA CANYON RD
148	1/23/2015	1041	FU	SODA CANYON RD
149	1/26/2015	1124	PATROL	SODA CANYON RD
150	1/31/2015	1227	PEDCK	SODA CANYON RD
151	1/31/2015	1626	TRES	SODA CANYON RD
152	2/4/2015	1623	487	SODA CANYON RD
153	2/10/2015	1108	VCK	SODA CANYON RD / SODA SPRINGS RD
154	2/11/2015	801	594	SODA CANYON
155	2/13/2015	1104	ASO	SODA CANYON RD CNTY
156	2/13/2015	1650	WCK	SODA CANYON RD
157	2/14/2015	1909	1030	SODA CANYON RD / SODA SPRINGS RD
158	2/14/2015	1325	ASO	SODA CANYON RD CNTY
159	2/15/2015	2046	NPROB	SODA CANYON RD
160	2/20/2015	2310	415	SODA CANYON RD
161	2/22/2015	801	AA	SODA CANYON RD
162	2/28/2015	1400	TRES	SODA CANYON RD
163	3/1/2015	1638	TS	SILVERADO TRL / SODA CANYON RD
164	3/3/2015	1633	PCK	SILVERADO TRL / SODA CANYON RD
165	3/3/2015	1649	TS	CHIMNEY ROCK RD / SODA CANYON RD
166	3/4/2015	1603	PCK	SILVERADO TRL / SODA CANYON RD
167	3/5/2015	1043	ASO	SODA CANYON RD CNTY
168	3/5/2015	1048	PCK	SODA CANYON RD
169	3/8/2015	1529	TRES	SODA CANYON RD
170	3/13/2015	929	BITE	SODA CANYON RD
171	3/14/2015	1810	594	SODA CANYON RD
172	3/14/2015	1723	CODE11	SODA CANYON RD
173	3/14/2015	450	SICK	SODA CANYON RD
174	3/15/2015	215	1021	SODA CANYON RD
175	3/16/2015	933	487	SODA CANYON RD
176	3/17/2015	705	TC	SILVERADO TRL / SODA CANYON RD
177	3/18/2015	1059	459	SODA CANYON RD
178	3/18/2015	213	BLEED	SODA CANYON RD
179	3/18/2015	1217	FU	SODA CANYON RD
180	3/18/2015	1336	FU	SODA CANYON RD

181	3/19/2015	1914	RECK	SILVERADO TRL / SODA CANYON RD
182	3/22/2015	1448	TRES	SODA CANYON RD
183	3/27/2015	1817	ASO	SILVERADO TRL CNTY/SODA CANYON RD
184	3/27/2015	2329	MEDIC	SODA CANYON RD
185	3/27/2015	1245	PCK	SODA CANYON RD
186	3/28/2015	1732	ASO	SODA CANYON RD CNTY
187	3/28/2015	1917	ASO	SODA CANYON RD / SODA SPRINGS RD
188	3/28/2015	1924	TC	SODA CANYON RD
189	3/28/2015	20	VCK	SODA CANYON RD / SODA SPRINGS RD
190	3/31/2015	1255	1033	SODA CANYON RD
191	4/3/2015	540	ACK	SODA CANYON RD
192	4/7/2015	1101	TRES	SODA CANYON RD
193	4/10/2015	1444	ASO	SODA CANYON RD CNTY
194	4/12/2015	2036	415	SODA CANYON RD
195	4/12/2015	2049	VCK	SILVERADO TRL / SODA CANYON RD
196	4/13/2015	1428	ASO	SODA CANYON RD CNTY
197	4/14/2015	804	CODE11	SODA CANYON RD
198	4/15/2015	1230	1030	SODA CANYON RD
199	4/15/2015	1256	MEDIC	SODA CANYON RD
200	4/21/2015	1205	SEIZU	SODA CANYON RD
201	4/24/2015	958	23152	SILVERADO TRL / SODA CANYON RD
202	4/25/2015	1610	459	SODA CANYON RD
203	4/25/2015	735	1030	SODA CANYON RD
204	4/26/2015	1205	TC	SODA CANYON RD
205	4/27/2015	2149	1030	SODA CANYON RD
206	4/28/2015	1833	1030	LOMA VISTA DR / SODA CANYON RD
207	5/1/2015	1333	488	SODA CANYON RD
208	5/1/2015	1509	CA	SODA CANYON RD CNTY
209	5/10/2015	2338	CODE11	SODA CANYON RD
210	5/11/2015	2007	415	SODA CANYON RD
211	5/15/2015	1414	CODE11	SILVERADO TRL / SODA CANYON RD
212	5/20/2015	1517	1033	SODA CANYON RD
213	5/25/2015	648	ASO	SODA CANYON RD
214	5/27/2015	1013	ASO	SODA CANYON RD
215	5/29/2015	1755	23152	SILVERADO TRL / SODA CANYON RD
216	6/4/2015	1629	1033	SODA CANYON RD
217	6/4/2015	1946	1144	SODA CANYON RD
218	6/5/2015	1521	23152	SODA CANYON RD
219	6/10/2015	1148	WCK	SODA CANYON RD
220	6/11/2015	2301	1070	SODA CANYON RD
221	6/11/2015	1526	VCK	SODA CANYON RD
222	6/14/2015	1207	TS	SILVERADO TRL / SODA CANYON RD
223	6/19/2015	917	CHEST	SODA CANYON RD
224	6/27/2015	1800	1125	SODA CANYON RD
225	6/28/2015	2221	415	SODA CANYON RD
226	6/30/2015	1617	TRES	SODA CANYON RD
227	7/1/2015	1531	23152	SILVERADO TRL / SODA CANYON RD

228	7/5/2015	1652	594	LOMA VISTA DR / SODA CANYON RD
229	7/5/2015	1618	TRES	SODA CANYON RD
230	7/5/2015	1713	TRES	SODA CANYON RD
231	7/7/2015	1456	23152	SILVERADO TRL / SODA CANYON RD
232	7/10/2015	1055	ASO	SODA CANYON RD
233	7/10/2015	1914	FU	SODA CANYON RD
234	7/12/2015	1335	1125	SODA CANYON RD
235	7/13/2015	103	TRES	SODA CANYON RD
236	7/15/2015	846	ASO	SILVERADO TRL / SODA CANYON RD
237	7/17/2015	621	1144	SODA CANYON RD
238	7/18/2015	1742	TRES	SODA CANYON RD
239	7/20/2015	1106	MEDIC	SODA CANYON RD
240	7/20/2015	1108	MEDIC	SODA CANYON RD
241	7/22/2015	2011	CODE11	SODA CANYON RD
242	7/22/2015	1637	FU	SODA CANYON RD
243	7/23/2015	1715	23152	SILVERADO TRL / SODA CANYON RD
244	7/23/2015	1928	CA	SODA CANYON RD
245	7/28/2015	1017	ASO	SODA CANYON RD
246	7/30/2015	1246	CODE11	HARDMAN AVE / SODA CANYON RD
247	7/31/2015	1453	CODE11	SODA CANYON RD
248	7/31/2015	1847	SEIZU	SODA CANYON RD
249	8/6/2015	823	1030	SODA CANYON RD
250	8/6/2015	1515	ASO	SILVERADO TRL / SODA CANYON RD
251	8/7/2015	1024	OVERD	SODA CANYON RD
252	8/9/2015	1706	23152	SILVERADO TRL / SODA CANYON RD
253	8/12/2015	827	NCO	SODA CANYON RD CNTY
254	8/15/2015	512	CODE11	SODA CANYON RD
255	8/20/2015	1600	TRES	SODA CANYON RD
256	8/21/2015	811	1056	SODA CANYON RD
257	8/21/2015	845	MEDIC	SODA CANYON RD
258	8/23/2015	1209	1030	SODA CANYON RD
259	8/23/2015	1044	FU	SODA CANYON RD
260	8/25/2015	841	MEDIC	SODA CANYON RD
261	8/28/2015	1802	23152	SILVERADO TRL / SODA CANYON RD
262	8/29/2015	1446	1125	SILVERADO TRL / SODA CANYON RD
263	8/29/2015	954	PCK	SODA CANYON RD
264	8/29/2015	2137	TC	SODA CANYON RD
265	9/6/2015	1300	FU	SODA CANYON RD
266	9/11/2015	1305	RECK	SILVERADO TRL / SODA CANYON RD
267	9/12/2015	2120	CODE11	SODA CANYON RD
268	9/12/2015	2302	CODE11	SODA CANYON RD
269	9/13/2015	1553	CODE11	SODA CANYON RD
270	9/13/2015	1557	CODE11	SODA CANYON RD
271	9/14/2015	1404	23152	SILVERADO TRL / SODA CANYON RD
272	9/15/2015	1408	23152	SILVERADO TRL / SODA CANYON RD
273	9/15/2015	626	CODE11	SODA CANYON RD
274	9/18/2015	1205	ASO	SODA CANYON RD

275	9/22/2015	1718	VCK	SODA CANYON RD
276	9/26/2015	2039	WCK	SODA CANYON RD
277	10/1/2015	1346	CHEST	SODA CANYON RD
278	10/1/2015	1403	RECK	SILVERADO TRL / SODA CANYON RD
279	10/1/2015	1643	SEARCH	SODA CANYON RD
280	10/3/2015	2126	PATROL	SODA CANYON RD
281	10/8/2015	444	MAIL	SODA CANYON RD
282	10/8/2015	1127	MAIL	SILVERADO TRL / SODA CANYON RD
283	10/9/2015	2120	PCK	SODA CANYON ROAD
284	10/9/2015	844	RECK	SILVERADO TRL / SODA CANYON RD
285	10/11/2015	1852	23152	SILVERADO TRL / SODA CANYON RD
286	10/12/2015	1331	NPROB	SODA CANYON RD
287	10/15/2015	905	CODE11	SODA CANYON RD
288	10/18/2015	1904	1030	SODA CANYON RD / SODA SPRINGS RD
289	10/18/2015	1454	TRES	SODA CANYON RD
290	10/23/2015	1009	ASO	SODA CANYON RD CNTY
291	10/24/2015	22	23152	SILVERADO TRL / SODA CANYON RD
292	10/24/2015	1042	ASO	SODA CANYON RD CNTY
293	10/31/2015	1823	TRES	SODA CANYON RD
294	11/11/2015	1028	EABUSE	SODA CANYON RD
295	11/14/2015	1545	23152	SILVERADO TRL / SODA CANYON RD
296	11/15/2015	1221	ASO	SODA CANYON RD
297	11/18/2015	816	EABUSE	SODA CANYON RD
298	11/23/2015	1605	RECK	SILVERADO TRL / SODA CANYON RD
299	11/24/2015	1015	488	SODA CANYON RD
300	11/27/2015	1859	23152	SILVERADO TRL / SODA CANYON RD
301	11/28/2015	157	VCK	SODA CANYON RD / SODA SPRINGS RD
302	12/1/2015	1408	1030	SODA CANYON RD
303	12/2/2015	938	FU	SODA CANYON RD
304	12/3/2015	1147	CODE11	SODA CANYON RD
305	12/7/2015	1002	AA	SODA CANYON RD
306	12/8/2015	1554	CIVIL	SODA CANYON RD
307	12/18/2015	1327	1033	SODA CANYON RD
308	12/18/2015	1406	PEDCK	SODA CANYON RD
309	12/19/2015	1931	23152	SILVERADO TRL / SODA CANYON RD
310	12/27/2015	1851	23152	SILVERADO TRL / SODA CANYON RC
311	12/27/2015	1732	CHOKE	SODA CANYON RD
312	12/28/2015	2250	1091B	SODA CANYON RD
313	1/6/2016	1142	ASO	SODA CANYON RD CNTY
314	1/6/2016	1917	TC	SODA CANYON RD
315	1/7/2016	1351	ASO	SODA CANYON RD
316	1/9/2016	1420	ASO	LOMA VISTA DR / SODA CANYON RD
317	1/9/2016	1901	ASO	SODA CANYON RD
318	1/9/2016	1954	TS	SILVERADO TRL / SODA CANYON RD
319	1/9/2016	1955	TS	SILVERADO TRL / SODA CANYON RD
320	1/10/2016	1040	ASO	SODA CANYON RD
321	1/10/2016	1414	ASO	SODA CANYON RD CNTY

322	1/10/2016	1627	ASO	SODA CANYON RD CNTY
323	1/10/2016	1906	ASO	SODA CANYON RD CNTY
324	1/10/2016	1543	PCK	SODA CANYON RD
325	1/10/2016	1333	SICK	SODA CANYON RD
326	1/11/2016	839	ASO	SODA CANYON RD CNTY
327	1/11/2016	1101	ASO	SODA CANYON RD
328	1/11/2016	1503	ASO	SODA CANYON
329	1/11/2016	1313	CA	SODA CANYON RD
330	1/11/2016	1313	CA	SODA CANYON RD
331	1/12/2016	940	1030	SODA CANYON RD
332	1/12/2016	1545	RECK	SILVERADO TRL / SODA CANYON RD
333	1/13/2016	834	ASO	SODA CANYON RD
334	1/15/2016	1159	ASO	SODA CANYON RD
335	1/20/2016	940	ASO	LOMA VISTA DR / SODA CANYON RD
336	1/20/2016	1217	ASO	SODA CANYON RD
337	1/21/2016	1548	ASO	LOMA VISTA DR / SODA CANYON FD
338	1/21/2016	1653	SEARCH	SODA CANYON RD CNTY
339	1/22/2016	1105	ASO	SILVERADO TRL / SODA CANYON RD
340	1/23/2016	1413	ASO	SODA CANYON RD / SODA SPRINGS RD
341	1/25/2016	1122	ASO	LOMA VISTA DR / SODA CANYON RD
342	1/25/2016	1153	ASO	SODA CANYON RD
343	1/25/2016	1300	ASO	SILVERADO TRL / SODA CANYON RD
344	1/25/2016	1431	ASO	LOMA VISTA DR / SODA CANYON FE
345	1/26/2016	1350	ASO	LOMA VISTA DR / SODA CANYON RD
346	1/26/2016	1547	ASO	SODA CANYON RD CNTY
347	1/26/2016	752	PCK	SODA CANYON RD CNTY
348	1/27/2016	808	PCK	SODA CANYON RD
349	1/31/2016	747	PCK	SODA CANYON RD CNTY
350	2/1/2016	827	PCK	SODA CANYON RD
351	2/4/2016	751	PCK	SODA CANYON RD CNTY
352	2/9/2016	319	VCK	SHADY OAKS DR / SODA CANYON RD
353	2/13/2016	957	FU	SODA CANYON RD CNTY
354	2/13/2016	550	MAIL	SODA CANYON RD
355	2/14/2016	1152	CODE11	SODA CANYON RD
356	2/14/2016	1751	FU	SODA CANYON RD
357	2/14/2016	1529	MAIL	SODA CANYON RD
358	2/14/2016	956	PCK	1154 / 1157 SODA CANYON RD CNTY
359	2/15/2016	1637	SHOTS	SILVERADO TRL / SODA CANYON RD
360	2/15/2016	414	TS	SODA CANYON RD
361	2/16/2016	1452	RECK	SILVERADO TRL / SODA CANYON RD
362	2/18/2016	1531	1033	SODA CANYON RD
363	2/18/2016	1020	TC	LOMA VISTA DR / SODA CANYON RD
364	2/19/2016	1539	FU	SODA CANYON RD
365	2/21/2016	1836	CODE11	SODA CANYON RD
366	2/22/2016	1615	EMBEZ	SODA CANYON RD
367	3/11/2016	2237	RECK	SILVERADO TRL / SODA CANYON RD
368	3/13/2016	2053	MEDIC	SODA CANYON RD

369	3/13/2016	2052	PDOWN	SODA CANYON RD
370	3/16/2016	344	ABDOM	SODA CANYON RD
371	3/17/2016	1720	23152	SILVERADO TRL / SODA CANYON RD
372	3/17/2016	1352	TRES	SODA CANYON RD
373	3/17/2016	1530	TRES	SODA CANYON RD
374	3/24/2016	943	CA	LOMA VISTA DR / SODA CANYON RD
375	3/25/2016	1120	1033	SODA CANYON RD
376	3/27/2016	1525	CODE11	PETRA DR / SODA CANYON RD
377	3/27/2016	1525	CODE11	PETRA DR / SODA CANYON RD
378	4/5/2016	701	SICK	SODA CANYON RD
379	4/5/2016	1701	TRES	SODA CANYON RD
380	4/7/2016	919	RECK	SILVERADO TRL / SODA CANYON RD
381	4/12/2016	824	1033	SODA CANYON RD
382	4/15/2016	2112	ASO	SODA CANYON RD
383	4/16/2016	1106	ASO	SODA CANYON RD CNTY
384	4/16/2016	1449	TRES	SODA CANYON RD
385	4/17/2016	1725	FU	SODA CANYON RD
386	4/17/2016	1537	TRES	SODA CANYON RD
387	4/27/2016	1151	ASO	SODA CANYON RD CNTY
388	4/27/2016	1911	ASO	SODA CANYON RD
389	4/29/2016	856	AA	SODA CANYON RD
390	4/30/2016	1305	ASO	SODA CANYON RD
391	4/30/2016	1538	OCR	SODA CANYON RD
392	5/2/2016	1448	CODE11	HARDMAN AVE / SODA CANYON RD
393	5/3/2016	1953	PATROL	SODA CANYON RD
394	5/7/2016	1421	FRAUD	SODA CANYON RD
395	5/9/2016	1717	ASO	SODA CANYON RD
396	5/10/2016	810	ASO	SODA CANYON RD
397	5/15/2016	1634	TRES	SODA CANYON RD
398	5/17/2016	918	ASO	SODA CANYON RD
399	5/17/2016	1829	ASO	SODA CANYON RD CNTY
400	5/20/2016	834	ASO	SODA CANYON RD
401	5/20/2016	953	PDOWN	SODA CANYON RD
402	5/26/2016	906	SEIZU	SODA CANYON RD
403	5/28/2016	1023	ASO	SODA CANYON RD
404	5/28/2016	1023	ASO	SODA CANYON RD
405	6/1/2016	915	CODE11	SODA CANYON RD
406	6/1/2016	1035	FRAUD	SODA CANYON RD
407	6/1/2016	345	TS	SILVERADO TRL / SODA CANYON RD
408	6/3/2016	2152	CODE11	HARDMAN AVE / SODA CANYON RD
409	6/3/2016	2152	CODE11	HARDMAN AVE / SODA CANYON RD
410	6/5/2016	1444	TRES	SODA CANYON RD
411	6/8/2016	848	RECK	HARDMAN AVE / SODA CANYON RD
412	6/9/2016	716	594	SODA CANYON RD
413	6/9/2016	16	TS	SILVERADO TRL / SODA CANYON RD
414	6/11/2016	904	TRES	SODA CANYON RD / SODA SPRINGS RD
415	6/13/2016	1633	RECK	SILVERADO TRL / SODA CANYON RD

416	6/17/2016	1524	BREATH	SODA CANYON RD
417	6/18/2016	2209	415	SODA CANYON RD
418	6/18/2016	2349	415	SODA CANYON RD
419	6/19/2016	1536	CODE11	SODA CANYON RD
420	6/19/2016	1536	CODE11	SODA CANYON RD
421	6/28/2016	331	1033	SODA CANYON RD
422	7/6/2016	1023	CA	SODA CANYON RD
423	7/9/2016	2224	TS	SILVERADO TRL / SODA CANYON RD
424	7/16/2016	21	TS	LOMA VISTA DR / SODA CANYON RD
425	7/24/2016	2130	415	SODA CANYON RD
426	7/25/2016	1926	1144	SODA CANYON RD
427	7/25/2016	909	FU	SODA CANYON RD
428	7/26/2016	1726	23152	SILVERADO TRL / SODA CANYON RD
429	7/26/2016	1245	CA	SODA CANYON RD
430	7/26/2016	855	CODE11	SODA CANYON RD
431	7/26/2016	912	CODE11	SODA CANYON RD
432	7/26/2016	900	PATROL	SODA CANYON RD
433	7/26/2016	917	PATROL	SODA CANYON RD / SODA SPRINGS RD
434	7/27/2016	1723	TC	SODA CANYON RD
435	8/4/2016	2319	1033	SODA CANYON RD
436	8/7/2016	822	1030	SODA CANYON RD
437	8/11/2016	1227	488	SODA CANYON RD
438	8/12/2016	1513	MA	SILVERADO TRL / SODA cAJYON Rn
439	8/12/2016	839	RECK	SILVERADO TRL / SODA CANYON RD
440	8/13/2016	46	TC	SODA CANYON RD
441	8/14/2016	1327	415	SILVERADO TRL / SODA CANYON RD
442	8/20/2016	1654	CODE11	PETRA DR / SODA CANYON RD
443	8/24/2016	739	1030	SODA CANYON RD
444	8/27/2016	1615	1033	SODA CANYON RD
445	8/28/2016	1211	TRES	SODA CANYON RD / SODA SPRINGS RD
446	9/1/2016	1947	CODE11	SODA CANYON RD
447	9/3/2016	2207	CHEST	SODA CANYON RD
448	9/6/2016	2359	ASSAU	SILVERADO TRL / SODA CANYON RD
449	9/6/2016	2359	ASSAU	SILVERADO TRL / SODA CANYON RD
450	9/7/2016	600	1030	SILVERADO TRL / SODA CANYON RD
451	9/7/2016	106	ASSAU	SILVERADO TRL / SODA CANYON RD
452	9/7/2016	229	VCK	SODA CANYON RD
453	9/9/2016	1214	FU	SODA CANYON RD
454	9/11/2016	956	488	SODA CANYON RD
455	9/11/2016	1632	SCK	SODA CANYON RD
456	9/12/2016	627	ASO	SODA CANYON RD
457	9/18/2016	906	TS	SILVERADO TRL / SODA CANYON RD
458	9/21/2016	541	CODE11	SODA CANYON RD
459	9/22/2016	956	PATROL	SODA CANYON RD
460	9/23/2016	1357	PATROL	SODA CANYON RD
461	9/24/2016	1304	PATROL	SODA CANYON RD
462	9/24/2016	741	SHOTS	SODA CANYON RD

463	9/25/2016	1610	1030	SODA CANYON RD
464	9/25/2016	1605	MAIL	SODA CANYON RD
465	9/25/2016	1723	PCK	SILVERADO TRL / SODA CANYON RD
466	9/26/2016	1555	PATROL	SODA CANYON RD
467	9/27/2016	1604	FOUND	SODA CANYON RD
468	9/28/2016	1352	FU	SODA CANYON RD CNTY
469	10/1/2016	1745	CODE11	SODA CANYON RD
470	10/1/2016	1746	CHEST	SODA CANYON RD
471	10/4/2016	31	ATC	SODA CANYON RD
472	10/15/2016	1855	SHOTS	SODA CANYON RD
473	10/21/2016	1806	RECK	SODA CANYON RD / SODA SPRINGS RD
474	10/30/2016	1126	STROK	SODA CANYON RD
475	10/31/2016	1004	ASO	SODA CANYON RD
476	10/31/2016	1148	ASO	SODA CANYON RD
477	10/31/2016	2349	MA	SODA CANYON RD / SODA SPRINGS RD
478	11/4/2016	1347	PATROL	SODA CANYON RD
479	11/16/2016	1059	HAZCON	SODA CANYON RD
480	11/27/2016	2247	1030	SODA CANYON RD
481	12/1/2016	1158	HARASS	SODA CANYON RD
482	12/3/2016	859	ASO	SODA CANYON RD
483	12/11/2016	1245	1033	SODA CANYON RD
484	12/15/2016	341	CODE11	SODA CANYON RD
485	12/18/2016	146	CODE11	SODA CANYON RD
486	12/20/2016	703	SEIZU	SODA CANYON RD
487	12/29/2016	936	TC	SODA CANYON RD
488	12/29/2016	1018	MAIL	SODA CANYON RD
489	12/31/2016	1134	TRES	SODA CANYON RD / SODA SPRINGS RD
490	1/8/2017	1202	1033	SODA CANYON RD
491	1/9/2017	1659	MAIL	SODA CANYON RD
492	1/14/2017	311	PCK	SODA CANYON RD CNTY
493	1/20/2017	2148	1033	SODA CANYON RD
494	1/22/2017	150	PCK	SODA CANYON RD CNTY
495	1/26/2017	1320	TC	SODA CANYON RD / SODA SPRINGS RD
496	2/6/2017	853	CHEST	SODA CANYON RD
497	2/16/2017	1331	DRUG	SODA CANYON RD
498	3/6/2017	1419	CODE11	SODA CANYON RD

Number of Daytime Incidents (6am-6pm)	366
Number of Nighttime Incidents (6pm-6am)	132
Total Number of Incidents	498

Date: April 2, 2017

Compiled by: Anthony Arger, JD, MBA

Source: Napa Sheriff's Department - Calls for Service Logs

EXHIBIT “20”

EXHIBIT “20”

EXHIBIT “20”

SODA CANYON - CALLS FOR SERVICE

1/1/14 - 9/26/16

ACTDATE	ACTTIME	NATURECODE	STREET
09/10/2014	00:00:00	0954	TC SODA CANYON RD
07/30/2014	00:00:00	2024	415 SILVERADO TRL / SODA CANYON RD
07/21/2014	00:00:00	1231	FU SODA CANYON RD
07/16/2014	00:00:00	1208	FU SODA CANYON RD
06/19/2014	00:00:00	1214	PATROL SODA CANYON RD
06/18/2014	00:00:00	0952	FU SODA CANYON RD
06/07/2014	00:00:00	2136	415 SODA CANYON RD
06/06/2014	00:00:00	1227	PATROL SODA CANYON RD
05/10/2014	00:00:00	1714	SHOTS SODA CANYON RD
05/07/2014	00:00:00	1306	ABDOM SODA CANYON RD
05/07/2014	00:00:00	1259	PATROL SODA CANYON RD
05/02/2014	00:00:00	1756	23152 SILVERADO TRL / SODA CANYON RD
09/12/2014	00:00:00	0648	ASO SILVERADO TRL / SODA CANYON RD
09/08/2014	00:00:00	1054	VCK LOMA VISTA DR / SODA CANYON RD
09/05/2014	00:00:00	1337	FRAUD SODA CANYON RD
09/03/2014	00:00:00	1136	PATROL SODA CANYON RD
07/29/2014	00:00:00	1124	PATROL SODA CANYON RD
07/24/2014	00:00:00	1322	FU SODA CANYON RD CNTY
07/24/2014	00:00:00	1319	FU SODA CANYON RD CNTY
07/24/2014	00:00:00	1314	FU SODA CANYON RD CNTY
07/22/2014	00:00:00	1217	RECK SILVERADO TRL / SODA CANYON RD
07/20/2014	00:00:00	1654	23152 SILVERADO TRL / SODA CANYON RD
07/16/2014	00:00:00	1158	PATROL SODA CANYON RD
06/22/2014	00:00:00	1758	TRES SODA CANYON RD
05/01/2014	00:00:00	0037	FU SODA CANYON RD CNTY
04/30/2014	00:00:00	1227	PATROL SODA CANYON RD
04/28/2014	00:00:00	1132	CHEST SODA CANYON RD
02/07/2014	00:00:00	1128	1033 SODA CANYON RD
09/13/2014	00:00:00	1637	23152 SILVERADO TRL / SODA CANYON RD
09/06/2014	00:00:00	1211	RECK SODA CANYON RD / SODA SPRINGS RD
08/30/2014	00:00:00	2129	459 SODA CANYON RD
08/01/2014	00:00:00	1426	GDUMP SODA CANYON RD
09/17/2014	00:00:00	1325	ASO SODA CANYON RD
07/30/2014	00:00:00	0508	HAZCON SILVERADO TRL / SODA CANYON RD
07/21/2014	00:00:00	1108	487 SODA CANYON RD
07/17/2014	00:00:00	1740	FU SODA CANYON RD
04/20/2014	00:00:00	2025	23152 SILVERADO TRL / SODA CANYON RD
02/10/2014	00:00:00	0120	1030 SODA CANYON RD
02/08/2014	00:00:00	1137	PATROL SODA CANYON RD
09/18/2014	00:00:00	1320	ASO SODA CANYON RD CNTY
12/15/2014	00:00:00	0936	MEDIC SODA CANYON RD
12/24/2014	00:00:00	2314	23152 SILVERADO TRL / SODA CANYON RD
01/31/2015	00:00:00	1626	TRES SODA CANYON RD
02/04/2015	00:00:00	1623	487 SODA CANYON RD
02/13/2015	00:00:00	1104	ASO SODA CANYON RD CNTY

NAPA SHERIFF'S DEPARTMENT
 CONTROLLED DOCUMENT
 NOT TO BE DUPLICATED

RELEASED TO
 RELEASED BY M Cooper
 DATE 9/26/16

ACTDATE	ACTTIME	NATURECODE	STREET
02/15/2015	00:00:00	2046	NPROB SODA CANYON RD
02/20/2015	00:00:00	2310	415 SODA CANYON RD
02/22/2015	00:00:00	0801	AA SODA CANYON RD
03/22/2015	00:00:00	1448	TRES SODA CANYON RD
03/27/2015	00:00:00	1245	PCK SODA CANYON RD
03/28/2015	00:00:00	1732	ASO SODA CANYON RD CNTY
03/28/2015	00:00:00	1917	ASO SODA CANYON RD / SODA SPRINGS RD
03/31/2015	00:00:00	1255	1033 SODA CANYON RD
04/12/2015	00:00:00	2036	415 SODA CANYON RD
04/12/2015	00:00:00	2049	VCK SILVERADO TRL / SODA CANYON RD
04/13/2015	00:00:00	1428	ASO SODA CANYON RD CNTY
05/20/2015	00:00:00	1517	1033 SODA CANYON RD
06/04/2015	00:00:00	1629	1033 SODA CANYON RD
06/05/2015	00:00:00	1521	23152 SODA CANYON RD
06/11/2015	00:00:00	1526	VCK SODA CANYON RD
06/11/2015	00:00:00	2301	1070 SODA CANYON RD
07/01/2015	00:00:00	1531	23152 SILVERADO TRL / SODA CANYON RD
07/05/2015	00:00:00	1618	TRES SODA CANYON RD
07/07/2015	00:00:00	1456	23152 SILVERADO TRL / SODA CANYON RD
07/12/2015	00:00:00	1335	1125 SODA CANYON RD
07/13/2015	00:00:00	0103	TRES SODA CANYON RD
07/15/2015	00:00:00	0846	ASO SILVERADO TRL / SODA CANYON RD
07/17/2015	00:00:00	0621	1144 SODA CANYON RD
07/18/2015	00:00:00	1742	TRES SODA CANYON RD
07/20/2015	00:00:00	1106	MEDIC SODA CANYON RD
07/20/2015	00:00:00	1108	MEDIC SODA CANYON RD
07/22/2015	00:00:00	2011	CODE11 SODA CANYON RD
07/23/2015	00:00:00	1928	CA SODA CANYON RD
06/19/2015	00:00:00	0917	CHEST SODA CANYON RD
06/27/2015	00:00:00	1800	1125 SODA CANYON RD
06/30/2015	00:00:00	1617	TRES SODA CANYON RD
08/12/2015	00:00:00	0827	NCO SODA CANYON RD CNTY
08/15/2015	00:00:00	0512	CODE11 SODA CANYON RD
08/20/2015	00:00:00	1600	TRES SODA CANYON RD
08/21/2015	00:00:00	0811	1056 SODA CANYON RD
08/23/2015	00:00:00	1044	FU SODA CANYON RD
08/23/2015	00:00:00	1209	1030 SODA CANYON RD
09/06/2015	00:00:00	1300	FU SODA CANYON RD
07/30/2015	00:00:00	1246	CODE11 HARDMAN AVE / SODA CANYON RD
08/06/2015	00:00:00	1515	ASO SILVERADO TRL / SODA CANYON RD
09/12/2015	00:00:00	2302	CODE11 SODA CANYON RD
09/12/2015	00:00:00	2120	CODE11 SODA CANYON RD
09/13/2015	00:00:00	1557	CODE11 SODA CANYON RD
09/14/2015	00:00:00	1404	23152 SILVERADO TRL / SODA CANYON RD
09/15/2015	00:00:00	1408	23152 SILVERADO TRL / SODA CANYON RD
09/18/2015	00:00:00	1205	ASO SODA CANYON RD
10/01/2015	00:00:00	1403	RECK SILVERADO TRL / SODA CANYON RD
10/01/2015	00:00:00	1643	SEARCH SODA CANYON RD
10/03/2015	00:00:00	2126	PATROL SODA CANYON RD
10/09/2015	00:00:00	2120	PCK SODA CANYON ROAD
10/12/2015	00:00:00	1331	NPROB SODA CANYON RD

NAPA SHERIFF'S DEPARTMENT
CONTROLLED DOCUMENT
NOT TO BE DUPLICATED

RELEASED TO
RELEASED BY M. Cooper
DATE 9/26/16

ACTDATE	ACTTIME	NATURECODE	STREET
10/18/2015	00:00:00	1454	TRES SODA CANYON RD
10/18/2015	00:00:00	1904	1030 SODA CANYON RD / SODA SPRINGS RD
11/14/2015	00:00:00	1545	23152 SILVERADO TRL / SODA CANYON RD
11/15/2015	00:00:00	1221	ASO SODA CANYON RD
11/18/2015	00:00:00	0816	EABUSE SODA CANYON RD
11/23/2015	00:00:00	1605	RECK SILVERADO TRL / SODA CANYON RD
11/28/2015	00:00:00	0157	VCK SODA CANYON RD / SODA SPRINGS RD
12/01/2015	00:00:00	1408	1030 SODA CANYON RD
12/03/2015	00:00:00	1147	CODE11 SODA CANYON RD
02/18/2016	00:00:00	1020	TC LOMA VISTA DR / SODA CANYON RD
02/19/2016	00:00:00	1539	FU SODA CANYON RD
12/07/2015	00:00:00	1002	AA SODA CANYON RD
10/24/2015	00:00:00	0022	23152 SILVERADO TRL / SODA CANYON RD
10/31/2015	00:00:00	1823	TRES SODA CANYON RD
11/11/2015	00:00:00	1028	EABUSE SODA CANYON RD
12/08/2015	00:00:00	1554	CIVIL SODA CANYON RD
01/31/2016	00:00:00	0747	PCK SODA CANYON RD CNTY
02/01/2016	00:00:00	0827	PCK SODA CANYON RD
06/21/2014	00:00:00	1700	RECK SILVERADO TRL / SODA CANYON RD
06/17/2014	00:00:00	1354	594 SODA CANYON RD
06/17/2014	00:00:00	1352	488 SODA CANYON RD
06/09/2014	00:00:00	2215	1030 SODA CANYON RD / SODA SPRINGS RD
05/10/2014	00:00:00	1504	1033 SODA CANYON RD
05/10/2014	00:00:00	1503	1033 SODA CANYON RD
05/02/2014	00:00:00	0842	GDUMP LOMA VISTA DR / SODA CANYON RD
04/20/2014	00:00:00	2113	23152 SILVERADO TRL / SODA CANYON RD
04/20/2014	00:00:00	1731	23152 SILVERADO TRL / SODA CANYON RD
04/17/2014	00:00:00	2233	TS SILVERADO TRL / SODA CANYON RD
03/28/2015	00:00:00	1924	TC SODA CANYON RD
02/12/2014	00:00:00	1737	RECK SILVERADO TRL / SODA CANYON RD
02/09/2014	00:00:00	1803	1125 SILVERADO TRL / SODA CANYON RD
02/01/2014	00:00:00	2230	415 SODA CANYON RD
09/19/2014	00:00:00	0916	ASO SODA CANYON RD CNTY
12/16/2014	00:00:00	0458	1125 SODA CANYON RD
12/19/2014	00:00:00	0956	CIVIL SODA CANYON RD
01/31/2015	00:00:00	1227	PEDCK SODA CANYON RD
02/04/2016	00:00:00	0751	PCK SODA CANYON RD CNTY
02/13/2016	00:00:00	0550	MAIL SODA CANYON RD
02/15/2016	00:00:00	1637	SHOTS SILVERADO TRL / SODA CANYON RD
03/25/2016	00:00:00	1120	1033 SODA CANYON RD
03/27/2016	00:00:00	1525	CODE11 PETRA DR / SODA CANYON RD
04/05/2016	00:00:00	0701	SICK SODA CANYON RD
05/15/2016	00:00:00	1634	TRES SODA CANYON RD
06/28/2016	00:00:00	0331	1033 SODA CANYON RD
07/06/2016	00:00:00	1023	CA SODA CANYON RD
07/09/2016	00:00:00	2224	TS SILVERADO TRL / SODA CANYON RD
08/04/2016	00:00:00	2319	1033 SODA CANYON RD
08/12/2016	00:00:00	0839	RECK SILVERADO TRL / SODA CANYON RD
08/12/2016	00:00:00	1513	MA SILVERADO TRL / SODA CANYON RD
09/23/2016	00:00:00	1357	PATROL SODA CANYON RD
08/20/2016	00:00:00	1654	CODE11 PETRA DR / SODA CANYON RD

NAPA SHERIFF'S DEPARTMENT
CONTROLLED DOCUMENT
NOT TO BE DUPLICATED

RELEASED TO
RELEASED BY M. Cooper
DATE 9/26/16

ACTDATE	ACTTIME	NATURECODE	STREET
09/25/2016	00:00:00	1610	1030 SODA CANYON RD
09/25/2016	00:00:00	1723	PCK SILVERADO TRL / SODA CANYON RD
08/24/2016	00:00:00	0739	1030 SODA CANYON RD
08/27/2016	00:00:00	1615	1033 SODA CANYON RD
05/26/2016	00:00:00	0906	SEIZU SODA CANYON RD
06/19/2016	00:00:00	1536	CODE11 SODA CANYON RD
08/28/2016	00:00:00	1211	TRES SODA CANYON RD / SODA SPRINGS RD
09/11/2016	00:00:00	0956	488 SODA CANYON RD
09/18/2016	00:00:00	0906	TS SILVERADO TRL / SODA CANYON RD
02/10/2015	00:00:00	1108	VCK SODA CANYON RD / SODA SPRINGS RD
02/11/2015	00:00:00	0801	594 SODA CANYON
02/13/2015	00:00:00	1650	WCK SODA CANYON RD
02/14/2015	00:00:00	1325	ASO SODA CANYON RD CNTY
02/14/2015	00:00:00	1909	1030 SODA CANYON RD / SODA SPRINGS RD
03/27/2015	00:00:00	1817	ASO SILVERADO TRL CNTY / SODA CANYON RD
03/27/2015	00:00:00	2329	MEDIC SODA CANYON RD
03/28/2015	00:00:00	0020	VCK SODA CANYON RD / SODA SPRINGS RD
04/03/2015	00:00:00	0540	ACK SODA CANYON RD
04/07/2015	00:00:00	1101	TRES SODA CANYON RD
10/14/2014	00:00:00	1452	1033 SODA CANYON RD
10/17/2014	00:00:00	0215	1033 SODA CANYON RD
03/10/2014	00:00:00	1037	1125 SILVERADO TRL / SODA CANYON RD
03/12/2014	00:00:00	1344	TRES SODA CANYON RD
04/05/2014	00:00:00	1420	ASO SODA CANYON RD / SODA SPRINGS RD
04/05/2014	00:00:00	1653	ASO SODA CANYON RD / SODA SPRINGS RD
04/15/2014	00:00:00	0038	OVERD SODA CANYON RD
04/15/2014	00:00:00	2016	1033 SODA CANYON RD
01/15/2014	00:00:00	1855	23152 SILVERADO TRL / SODA CANYON RD
01/17/2014	00:00:00	1634	488 SODA CANYON RD
03/02/2014	00:00:00	1458	ASO LOMA VISTA DR / SODA CANYON RD
03/03/2014	00:00:00	1051	LOST LOMA VISTA DR / SODA CANYON RD
03/05/2014	00:00:00	1659	TRES SODA CANYON RD / SODA SPRINGS RD
03/06/2014	00:00:00	1342	ASO SODA CANYON RD
10/22/2014	00:00:00	1440	WCK SODA CANYON RD
10/26/2014	00:00:00	1354	CA SODA CANYON RD
10/28/2014	00:00:00	1011	PATROL SODA CANYON RD
10/28/2014	00:00:00	1444	PATROL SODA CANYON RD
11/03/2014	00:00:00	0420	ABDOM SODA CANYON RD
11/04/2014	00:00:00	1754	ATC SODA CANYON RD
09/01/2016	00:00:00	1947	CODE11 SODA CANYON RD
09/07/2016	00:00:00	0229	VCK SODA CANYON RD
08/26/2014	00:00:00	1119	PATROL SODA CANYON RD
09/20/2014	00:00:00	1639	VCK SODA CANYON RD / SODA SPRINGS RD
03/30/2014	00:00:00	1531	488 SODA CANYON RD
03/31/2014	00:00:00	0920	ASO SODA CANYON RD
04/03/2014	00:00:00	2109	CODE11 SODA CANYON RD
09/25/2014	00:00:00	1826	SEARCH SODA CANYON RD
09/25/2014	00:00:00	2008	NSIB SODA CANYON RD
05/28/2014	00:00:00	2047	CODE11 SODA CANYON RD
10/08/2014	00:00:00	1505	ASSAU SODA CANYON RD
10/09/2014	00:00:00	2126	PATROL SODA CANYON RD

NAPA SHERIFF'S DEPARTMENT
 CONTROLLED DOCUMENT
 NOT TO BE DUPLICATED
 RELEASED TO
 RELEASED BY *M. Cooper*
 DATE *9/26/16*

ACTDATE	ACTTIME	NATURECODE	STREET
05/29/2014	00:00:00	1622	23152 SILVERADO TRL / SODA CANYON RD
05/30/2014	00:00:00	2023	1030 SODA CANYON RD
10/10/2014	00:00:00	0039	1033 SODA CANYON RD
10/13/2014	00:00:00	1104	TRES SODA CANYON RD
06/26/2014	00:00:00	1903	23152 SILVERADO TRL / SODA CANYON RD
06/28/2014	00:00:00	1054	1125 SODA CANYON RD
07/15/2014	00:00:00	1823	459 SODA CANYON RD
03/03/2015	00:00:00	1649	TS CHIMNEY ROCK RD / SODA CANYON RD
03/05/2015	00:00:00	1048	PCK SODA CANYON RD
10/03/2014	00:00:00	1402	UNCON SODA CANYON RD
10/06/2014	00:00:00	1313	TRES SODA CANYON RD
03/17/2015	00:00:00	0705	TC SILVERADO TRL / SODA CANYON RD
11/08/2014	00:00:00	0651	BREATH SODA CANYON RD
05/25/2015	00:00:00	0648	ASO SODA CANYON RD
05/27/2015	00:00:00	1013	ASO SODA CANYON RD
05/29/2015	00:00:00	1755	23152 SILVERADO TRL / SODA CANYON RD
06/04/2015	00:00:00	1946	1144 SODA CANYON RD
06/10/2015	00:00:00	1148	WCK SODA CANYON RD
03/18/2015	00:00:00	1059	459 SODA CANYON RD
03/18/2015	00:00:00	1217	FU SODA CANYON RD
04/15/2015	00:00:00	1230	1030 SODA CANYON RD
04/15/2015	00:00:00	1256	MEDIC SODA CANYON RD
04/21/2015	00:00:00	1205	SEIZU SODA CANYON RD
11/28/2014	00:00:00	1611	ATC SODA CANYON RD
06/14/2015	00:00:00	1207	TS SILVERADO TRL / SODA CANYON RD
09/13/2015	00:00:00	1553	CODE11 SODA CANYON RD
06/28/2015	00:00:00	2221	415 SODA CANYON RD
07/05/2015	00:00:00	1652	594 LOMA VISTA DR / SODA CANYON RD
04/10/2015	00:00:00	1444	ASO SODA CANYON RD CNTY
10/01/2015	00:00:00	1346	CHEST SODA CANYON RD
05/11/2015	00:00:00	2007	415 SODA CANYON RD
07/23/2015	00:00:00	1715	23152 SILVERADO TRL / SODA CANYON RD
07/28/2015	00:00:00	1017	ASO SODA CANYON RD
07/31/2015	00:00:00	1453	CODE11 SODA CANYON RD
07/31/2015	00:00:00	1847	SEIZU SODA CANYON RD
08/06/2015	00:00:00	0823	1030 SODA CANYON RD
08/07/2015	00:00:00	1024	OVERD SODA CANYON RD
08/09/2015	00:00:00	1706	23152 SILVERADO TRL / SODA CANYON RD
08/21/2015	00:00:00	0845	MEDIC SODA CANYON RD
08/25/2015	00:00:00	0841	MEDIC SODA CANYON RD
05/15/2015	00:00:00	1414	CODE11 SILVERADO TRL / SODA CANYON RD
08/28/2015	00:00:00	1802	23152 SILVERADO TRL / SODA CANYON RD
12/05/2014	00:00:00	1011	CODE11 SODA CANYON RD
07/03/2014	00:00:00	1136	PATROL SODA CANYON RD
07/11/2014	00:00:00	0030	TRAUM SODA CANYON RD
01/20/2015	00:00:00	1433	FU SODA CANYON RD
01/23/2015	00:00:00	1041	FU SODA CANYON RD
03/01/2015	00:00:00	1638	TS SILVERADO TRL / SODA CANYON RD
08/29/2015	00:00:00	0954	PCK SODA CANYON RD
08/29/2015	00:00:00	1446	1125 SILVERADO TRL / SODA CANYON RD
08/29/2015	00:00:00	2137	TC SODA CANYON RD

NAPA SHERIFF'S DEPARTMENT
CONTROLLED DOCUMENT
NOT TO BE DUPLICATED

RELEASED TO
RELEASED BY *M. Couper*
DATE *9/26/16*

ACTDATE	ACTTIME	NATURECODE	STREET
09/11/2015	00:00:00	1305	RECK SILVERADO TRL / SODA CANYON RD
07/05/2015	00:00:00	1713	TRES SODA CANYON RD
07/10/2015	00:00:00	1055	ASO SODA CANYON RD
07/10/2015	00:00:00	1914	FU SODA CANYON RD
07/22/2015	00:00:00	1637	FU SODA CANYON RD
03/27/2016	00:00:00	1525	CODE11 PETRA DR / SODA CANYON RD
05/10/2015	00:00:00	2338	CODE11 SODA CANYON RD
10/08/2015	00:00:00	1127	MAIL SILVERADO TRL / SODA CANYON RD
10/09/2015	00:00:00	0844	RECK SILVERADO TRL / SODA CANYON RD
03/03/2015	00:00:00	1633	PCK SILVERADO TRL / SODA CANYON RD
03/08/2015	00:00:00	1529	TRES SODA CANYON RD
03/14/2015	00:00:00	1810	594 SODA CANYON RD
01/11/2016	00:00:00	1313	CA SODA CANYON RD
01/11/2016	00:00:00	1313	CA SODA CANYON RD
01/12/2016	00:00:00	0940	1030 SODA CANYON RD
10/11/2015	00:00:00	1852	23152 SILVERADO TRL / SODA CANYON RD
10/15/2015	00:00:00	0905	CODE11 SODA CANYON RD
10/23/2015	00:00:00	1009	ASO SODA CANYON RD CNTY
10/24/2015	00:00:00	1042	ASO SODA CANYON RD CNTY
11/24/2015	00:00:00	1015	488 SODA CANYON RD
11/27/2015	00:00:00	1859	23152 SILVERADO TRL / SODA CANYON RD
12/02/2015	00:00:00	0938	FU SODA CANYON RD
02/09/2016	00:00:00	0319	VCK SHADY OAKS DR / SODA CANYON RD
06/19/2016	00:00:00	1536	CODE11 SODA CANYON RD
02/13/2016	00:00:00	0957	FU SODA CANYON RD CNTY
02/14/2016	00:00:00	0956	PCK 1154 / 1157 SODA CANYON RD CNTY
02/14/2016	00:00:00	1152	CODE11 SODA CANYON RD
02/14/2016	00:00:00	1529	MAIL SODA CANYON RD
02/14/2016	00:00:00	1751	FU SODA CANYON RD
02/15/2016	00:00:00	0414	TS SODA CANYON RD
09/06/2016	00:00:00	2359	ASSAU SILVERADO TRL / SODA CANYON RD
09/07/2016	00:00:00	0106	ASSAU SILVERADO TRL / SODA CANYON RD
09/15/2015	00:00:00	0626	CODE11 SODA CANYON RD
01/12/2016	00:00:00	1545	RECK SILVERADO TRL / SODA CANYON RD
01/13/2016	00:00:00	0834	ASO SODA CANYON RD
04/25/2015	00:00:00	1610	459 SODA CANYON RD
04/26/2015	00:00:00	1205	TC SODA CANYON RD
01/12/2015	00:00:00	1527	ACK SILVERADO TRL / SODA CANYON RD
01/18/2015	00:00:00	2336	ACK SODA CANYON RD
01/27/2016	00:00:00	0808	PCK SODA CANYON RD
02/22/2016	00:00:00	1615	EMBEZ SODA CANYON RD
01/06/2016	00:00:00	1142	ASO SODA CANYON RD CNTY
01/09/2016	00:00:00	1420	ASO LOMA VISTA DR / SODA CANYON RD
01/09/2016	00:00:00	1954	TS SILVERADO TRL / SODA CANYON RD
01/10/2016	00:00:00	1040	ASO SODA CANYON RD
01/11/2016	00:00:00	0839	ASO SODA CANYON RD CNTY
01/21/2016	00:00:00	1548	ASO LOMA VISTA DR / SODA CANYON RD
01/25/2016	00:00:00	1153	ASO SODA CANYON RD
01/25/2016	00:00:00	1431	ASO LOMA VISTA DR / SODA CANYON RD
01/26/2016	00:00:00	1350	ASO LOMA VISTA DR / SODA CANYON RD
12/27/2015	00:00:00	1851	23152 SILVERADO TRL / SODA CANYON RD

NAPA SHERIFF'S DEPARTMENT
CONTROLLED DOCUMENT
NOT TO BE DUPLICATED

RELEASED TO
RELEASED BY

M. Cooper
9/26/16

ACTDATE	ACTTIME	NATURECODE	STREET
06/03/2016	00:00:00	2152	CODE11 HARDMAN AVE / SODA CANYON RD
06/03/2016	00:00:00	2152	CODE11 HARDMAN AVE / SODA CANYON RD
03/11/2016	00:00:00	2237	RECK SILVERADO TRL / SODA CANYON RD
03/17/2016	00:00:00	1352	TRES SODA CANYON RD
06/05/2016	00:00:00	1444	TRES SODA CANYON RD
04/12/2016	00:00:00	0824	1033 SODA CANYON RD
04/15/2016	00:00:00	2112	ASO SODA CANYON RD
04/16/2016	00:00:00	1449	TRES SODA CANYON RD
04/17/2016	00:00:00	1725	FU SODA CANYON RD
04/27/2016	00:00:00	1151	ASO SODA CANYON RD CNTY
04/27/2016	00:00:00	1911	ASO SODA CANYON RD
04/29/2016	00:00:00	0856	AA SODA CANYON RD
04/30/2016	00:00:00	1305	ASO SODA CANYON RD
05/03/2016	00:00:00	1953	PATROL SODA CANYON RD
07/26/2016	00:00:00	0917	PATROL SODA CANYON RD / SODA SPRINGS RD
07/26/2016	00:00:00	1245	CA SODA CANYON RD
06/08/2016	00:00:00	0848	RECK HARDMAN AVE / SODA CANYON RD
06/09/2016	00:00:00	0016	TS SILVERADO TRL / SODA CANYON RD
06/11/2016	00:00:00	0904	TRES SODA CANYON RD / SODA SPRINGS RD
06/13/2016	00:00:00	1633	RECK SILVERADO TRL / SODA CANYON RD
06/01/2016	00:00:00	0345	TS SILVERADO TRL / SODA CANYON RD
06/01/2016	00:00:00	0915	CODE11 SODA CANYON RD
07/24/2016	00:00:00	2130	415 SODA CANYON RD
07/25/2016	00:00:00	1926	1144 SODA CANYON RD
07/26/2016	00:00:00	0855	CODE11 SODA CANYON RD
07/26/2016	00:00:00	0900	PATROL SODA CANYON RD
07/26/2016	00:00:00	0912	CODE11 SODA CANYON RD
09/22/2015	00:00:00	1718	VCK SODA CANYON RD
09/26/2015	00:00:00	2039	WCK SODA CANYON RD
02/16/2016	00:00:00	1452	RECK SILVERADO TRL / SODA CANYON RD
02/18/2016	00:00:00	1531	1033 SODA CANYON RD
10/08/2015	00:00:00	0444	MAIL SODA CANYON RD
05/10/2016	00:00:00	0810	ASO SODA CANYON RD
05/17/2016	00:00:00	0918	ASO SODA CANYON RD
09/25/2016	00:00:00	1605	MAIL SODA CANYON RD
05/17/2016	00:00:00	1829	ASO SODA CANYON RD CNTY
05/20/2016	00:00:00	0834	ASO SODA CANYON RD
05/20/2016	00:00:00	0953	PDOWN SODA CANYON RD
06/18/2016	00:00:00	2209	415 SODA CANYON RD
06/18/2016	00:00:00	2349	415 SODA CANYON RD
08/07/2016	00:00:00	0822	1030 SODA CANYON RD
08/11/2016	00:00:00	1227	488 SODA CANYON RD
08/13/2016	00:00:00	0046	TC SODA CANYON RD
08/14/2016	00:00:00	1327	415 SILVERADO TRL / SODA CANYON RD
04/05/2014	00:00:00	1420	ASO SODA CANYON RD / SODA SPRINGS RD
09/03/2016	00:00:00	2207	CHEST SODA CANYON RD
09/06/2016	00:00:00	2359	ASSAU SILVERADO TRL / SODA CANYON RD
09/07/2016	00:00:00	0600	1030 SILVERADO TRL / SODA CANYON RD
09/09/2016	00:00:00	1214	FU SODA CANYON RD
03/24/2016	00:00:00	0943	CA LOMA VISTA DR / SODA CANYON RD
04/05/2016	00:00:00	1701	TRES SODA CANYON RD

NADA SHERIFF'S DEPARTMENT
CONTROLLED DOCUMENT
NOT TO BE DUPLICATED

RELEASED TO

RELEASED BY

DATE

M. Cooper
9/26/16

ACTDATE	ACTTIME	NATURECODE	STREET
04/07/2016	00:00:00	0919	RECK SILVERADO TRL / SODA CANYON RD
05/07/2016	00:00:00	1421	FRAUD SODA CANYON RD
05/09/2016	00:00:00	1717	ASO SODA CANYON RD
09/24/2016	00:00:00	1304	PATROL SODA CANYON RD
03/01/2014	00:00:00	1219	ASO SODA CANYON RD
03/01/2014	00:00:00	1352	ASO SODA CANYON RD / SODA SPRINGS RD
03/27/2014	00:00:00	0741	PEDCK SODA CANYON RD
03/29/2014	00:00:00	1106	ASO SODA CANYON RD
09/25/2014	00:00:00	1826	NSIB SODA CANYON RD
04/01/2014	00:00:00	0845	10851 SODA CANYON RD
04/04/2014	00:00:00	1237	FOUND SODA CANYON RD
04/04/2014	00:00:00	1238	ASO SODA CANYON RD / SODA SPRINGS RD
04/10/2014	00:00:00	1232	1033 SODA CANYON RD
09/11/2016	00:00:00	1632	SCK SODA CANYON RD
09/12/2016	00:00:00	0627	ASO SODA CANYON RD
09/21/2016	00:00:00	0541	CODE11 SODA CANYON RD
09/22/2016	00:00:00	0956	PATROL SODA CANYON RD
07/03/2014	00:00:00	1451	RECK SILVERADO TRL / SODA CANYON RD
09/24/2016	00:00:00	0741	SHOTS SODA CANYON RD
07/12/2014	00:00:00	1710	TRES SODA CANYON RD
01/09/2014	00:00:00	2235	1030 SODA CANYON RD / SODA SPRINGS RD
01/10/2014	00:00:00	1751	TC SILVERADO TRL / SODA CANYON RD
09/20/2014	00:00:00	1614	TRES SODA CANYON RD / SODA SPRINGS RD
09/22/2014	00:00:00	2224	PATROL SODA CANYON RD
10/04/2014	00:00:00	2309	415 SODA CANYON RD
10/06/2014	00:00:00	1050	TC SODA CANYON RD
10/10/2014	00:00:00	0923	PATROL SODA CANYON RD
10/10/2014	00:00:00	1108	PATROL SODA CANYON RD
10/10/2014	00:00:00	1321	PATROL SODA CANYON RD
03/05/2015	00:00:00	1043	ASO SODA CANYON RD CNTY
04/12/2014	00:00:00	0927	PATROL SILVERADO TRL / SODA CANYON RD
05/11/2014	00:00:00	0728	SEIZU SODA CANYON RD
10/10/2014	00:00:00	1344	CA SODA CANYON RD
10/10/2014	00:00:00	1521	1030 SODA CANYON RD CNTY
10/14/2014	00:00:00	0804	CA SODA CANYON RD
11/08/2014	00:00:00	2305	CODE11 SODA CANYON RD
06/26/2014	00:00:00	1416	FRAUD SODA CANYON RD
07/05/2014	00:00:00	1851	CODE11 SILVERADO TRL / SODA CANYON RD
11/28/2014	00:00:00	2003	RECK SILVERADO TRL / SODA CANYON RD
08/13/2014	00:00:00	1027	VCK SILVERADO TRL / SODA CANYON RD
08/15/2014	00:00:00	1214	PATROL SODA CANYON RD
12/03/2014	00:00:00	2105	DRUG SODA CANYON RD
01/19/2015	00:00:00	2020	TRES SODA CANYON RD
08/17/2014	00:00:00	1355	VCK SODA CANYON RD
01/20/2015	00:00:00	0924	594 SODA CANYON RD
01/20/2015	00:00:00	1706	PATROL SODA CANYON RD
01/22/2015	00:00:00	1220	TS SILVERADO TRL / SODA CANYON RD
01/26/2015	00:00:00	1124	PATROL SODA CANYON RD
02/28/2015	00:00:00	1400	TRES SODA CANYON RD
03/04/2015	00:00:00	1603	PCK SILVERADO TRL / SODA CANYON RD
03/13/2015	00:00:00	0929	BITE SODA CANYON RD

NAPA SHERIFFS DEPARTMENT
CONTROLLED DOCUMENT
NOT TO BE DUPLICATED

RELEASED TO

RELEASED BY M. Cooper

DATE 9/26/16

ACTDATE	ACTTIME	NATURECODE	STREET
03/14/2015	00:00:00	0450	SICK SODA CANYON RD
03/14/2015	00:00:00	1723	CODE11 SODA CANYON RD
01/09/2016	00:00:00	1955	TS SILVERADO TRL / SODA CANYON RD
05/19/2014	00:00:00	0930	ASO SODA CANYON RD CNTY
05/21/2014	00:00:00	1622	CODE11 SODA CANYON RD
03/15/2015	00:00:00	0215	1021 SODA CANYON RD
03/16/2015	00:00:00	0933	487 SODA CANYON RD
03/18/2015	00:00:00	0213	BLEED SODA CANYON RD
03/18/2015	00:00:00	1336	FU SODA CANYON RD
11/17/2014	00:00:00	1318	TRAUM SODA CANYON RD
11/28/2014	00:00:00	0737	1033 SODA CANYON RD
04/24/2015	00:00:00	0958	23152 SILVERADO TRL / SODA CANYON RD
04/25/2015	00:00:00	0735	1030 SODA CANYON RD
04/27/2015	00:00:00	2149	1030 SODA CANYON RD
04/28/2015	00:00:00	1833	1030 LOMA VISTA DR / SODA CANYON RD
12/27/2015	00:00:00	1732	CHOKE SODA CANYON RD
12/28/2015	00:00:00	2250	1091B SODA CANYON RD
01/06/2016	00:00:00	1917	TC SODA CANYON RD
01/07/2016	00:00:00	1351	ASO SODA CANYON RD
01/09/2016	00:00:00	1901	ASO SODA CANYON RD
01/10/2016	00:00:00	1333	SICK SODA CANYON RD
01/10/2016	00:00:00	1414	ASO SODA CANYON RD CNTY
01/10/2016	00:00:00	1543	PCK SODA CANYON RD
01/10/2016	00:00:00	1627	ASO SODA CANYON RD CNTY
01/10/2016	00:00:00	1906	ASO SODA CANYON RD CNTY
01/11/2016	00:00:00	1101	ASO SODA CANYON RD
01/11/2016	00:00:00	1503	ASO SODA CANYON
03/19/2015	00:00:00	1914	RECK SILVERADO TRL / SODA CANYON RD
04/14/2015	00:00:00	0804	CODE11 SODA CANYON RD
01/20/2016	00:00:00	1217	ASO SODA CANYON RD
01/21/2016	00:00:00	1653	SEARCH SODA CANYON RD CNTY
01/22/2016	00:00:00	1105	ASO SILVERADO TRL / SODA CANYON RD
01/23/2016	00:00:00	1413	ASO SODA CANYON RD / SODA SPRINGS RD
05/01/2015	00:00:00	1333	488 SODA CANYON RD
05/01/2015	00:00:00	1509	CA SODA CANYON RD CNTY
12/18/2015	00:00:00	1327	1033 SODA CANYON RD
12/18/2015	00:00:00	1406	PEDCK SODA CANYON RD
12/19/2015	00:00:00	1931	23152 SILVERADO TRL / SODA CANYON RD
01/25/2016	00:00:00	1122	ASO LOMA VISTA DR / SODA CANYON RD
01/25/2016	00:00:00	1300	ASO SILVERADO TRL / SODA CANYON RD
01/26/2016	00:00:00	0752	PCK SODA CANYON RD CNTY
01/26/2016	00:00:00	1547	ASO SODA CANYON RD CNTY
02/21/2016	00:00:00	1836	CODE11 SODA CANYON RD
03/13/2016	00:00:00	2052	PDOWN SODA CANYON RD
03/13/2016	00:00:00	2053	MEDIC SODA CANYON RD
03/16/2016	00:00:00	0344	ABDOM SODA CANYON RD
03/17/2016	00:00:00	1530	TRES SODA CANYON RD
03/17/2016	00:00:00	1720	23152 SILVERADO TRL / SODA CANYON RD
04/16/2016	00:00:00	1106	ASO SODA CANYON RD CNTY
04/17/2016	00:00:00	1537	TRES SODA CANYON RD
01/15/2016	00:00:00	1159	ASO SODA CANYON RD

NAPA SHERIFF'S DEPARTMENT
CONTROLLED DOCUMENT
NOT TO BE DUPLICATED

RELEASED TO
RELEASED BY M. Cooper
DATE 9/26/16

ACTDATE	ACTTIME	NATURECODE	STREET
01/20/2016	00:00:00	0940 ASO	LOMA VISTA DR / SODA CANYON RD
05/28/2016	00:00:00	1023 ASO	SODA CANYON RD
05/28/2016	00:00:00	1023 ASO	SODA CANYON RD
06/01/2016	00:00:00	1035 FRAUD	SODA CANYON RD
06/09/2016	00:00:00	0716 594	SODA CANYON RD
06/17/2016	00:00:00	1524 BREATH	SODA CANYON RD
07/25/2016	00:00:00	0909 FU	SODA CANYON RD
07/26/2016	00:00:00	1726 23152	SILVERADO TRL / SODA CANYON RD
07/27/2016	00:00:00	1723 TC	SODA CANYON RD
04/30/2016	00:00:00	1538 PCK	SODA CANYON RD
05/02/2016	00:00:00	1448 CODE11	HARDMAN AVE / SODA CANYON RD
07/16/2016	00:00:00	0021 TS	LOMA VISTA DR / SODA CANYON RD

NAPA SHERIFF DEPARTMENT
CONTROLLED DOCUMENT
NOT TO BE REPRODUCED

RELEASED TO

RELEASED BY

MC Cooper

DATE

9/26/16

ACTDATE	ACTTIME	STREET	NATURECODE
01/06/2016	00:00:00	1142 SODA CANYON RD CNTY	ASO
01/06/2016	00:00:00	1917 SODA CANYON RD	TC
01/07/2016	00:00:00	1351 SODA CANYON RD	ASO
01/09/2016	00:00:00	1901 SODA CANYON RD	ASO
01/10/2016	00:00:00	1040 SODA CANYON RD	ASO
01/10/2016	00:00:00	1333 SODA CANYON RD	ASO
01/10/2016	00:00:00	1414 SODA CANYON RD CNTY	SICK
01/10/2016	00:00:00	1543 SODA CANYON RD	ASO
01/10/2016	00:00:00	1627 SODA CANYON RD CNTY	PCK
01/10/2016	00:00:00	1906 SODA CANYON RD CNTY	ASO
01/10/2016	00:00:00	1906 SODA CANYON RD CNTY	ASO
01/11/2016	00:00:00	0839 SODA CANYON RD CNTY	ASO
01/11/2016	00:00:00	1101 SODA CANYON RD	ASO
01/11/2016	00:00:00	1313 SODA CANYON RD	ASO
01/11/2016	00:00:00	1313 SODA CANYON RD	CA
01/12/2016	00:00:00	0940 SODA CANYON RD	CA
01/13/2016	00:00:00	0834 SODA CANYON RD	1030
01/15/2016	00:00:00	1159 SODA CANYON RD	ASO
01/20/2016	00:00:00	1217 SODA CANYON RD	ASO
01/21/2016	00:00:00	1653 SODA CANYON RD CNTY	ASO
01/23/2016	00:00:00	1413 SODA CANYON RD / SODA SPRINGS RD	SEARCH
01/25/2016	00:00:00	1153 SODA CANYON RD	ASO
01/26/2016	00:00:00	0752 SODA CANYON RD	ASO
01/26/2016	00:00:00	0752 SODA CANYON RD CNTY	PCK
01/26/2016	00:00:00	1547 SODA CANYON RD CNTY	ASO
01/27/2016	00:00:00	0808 SODA CANYON RD	PCK
01/31/2016	00:00:00	0747 SODA CANYON RD CNTY	PCK
02/01/2016	00:00:00	0827 SODA CANYON RD	PCK
02/04/2016	00:00:00	0751 SODA CANYON RD CNTY	PCK
02/13/2016	00:00:00	0550 SODA CANYON RD	PCK
02/13/2016	00:00:00	0957 SODA CANYON RD CNTY	MAIL
02/14/2016	00:00:00	1152 SODA CANYON RD	FU
02/14/2016	00:00:00	1152 SODA CANYON RD	CODE11

NAPA SHERIFF'S DEPARTMENT
CONTROLLED DOCUMENT
NOT TO BE DUPLICATED
RELEASED TO Lauren Griffiths
RELEASED BY TKS
DATE 3-10-17

ACTDATE	ACTTIME	STREET	NATURECODE
02/14/2016	00:00:00	1529 SODA CANYON RD	MAIL
02/14/2016	00:00:00	1751 SODA CANYON RD	FU
02/15/2016	00:00:00	0414 SODA CANYON RD	TS
02/18/2016	00:00:00	1531 SODA CANYON RD	1033
02/19/2016	00:00:00	1539 SODA CANYON RD	FU
02/21/2016	00:00:00	1836 SODA CANYON RD	CODE11
02/22/2016	00:00:00	1615 SODA CANYON RD	EMBEZ
03/13/2016	00:00:00	2052 SODA CANYON RD	PDOWN
03/13/2016	00:00:00	2053 SODA CANYON RD	MEDIC
03/16/2016	00:00:00	0344 SODA CANYON RD	ABDOM
03/17/2016	00:00:00	1352 SODA CANYON RD	TRES
03/17/2016	00:00:00	1530 SODA CANYON RD	TRES
03/25/2016	00:00:00	1120 SODA CANYON RD	1033
04/05/2016	00:00:00	0701 SODA CANYON RD	SICK
04/05/2016	00:00:00	1701 SODA CANYON RD	TRES
04/12/2016	00:00:00	0824 SODA CANYON RD	1033
04/15/2016	00:00:00	2112 SODA CANYON RD	ASO
04/16/2016	00:00:00	1106 SODA CANYON RD CNTY	ASO
04/16/2016	00:00:00	1449 SODA CANYON RD	TRES
04/17/2016	00:00:00	1537 SODA CANYON RD	TRES
04/17/2016	00:00:00	1725 SODA CANYON RD	FU
04/27/2016	00:00:00	1151 SODA CANYON RD CNTY	ASO
04/27/2016	00:00:00	1911 SODA CANYON RD	ASO
04/29/2016	00:00:00	0856 SODA CANYON RD	AA
04/30/2016	00:00:00	1305 SODA CANYON RD	ASO
04/30/2016	00:00:00	1538 SODA CANYON RD	PCK
05/03/2016	00:00:00	1953 SODA CANYON RD	PATROL
05/07/2016	00:00:00	1421 SODA CANYON RD	FRAUD
05/09/2016	00:00:00	1717 SODA CANYON RD	ASO
05/10/2016	00:00:00	0810 SODA CANYON RD	ASO
05/15/2016	00:00:00	1634 SODA CANYON RD	TRES
05/17/2016	00:00:00	0918 SODA CANYON RD	ASO
05/17/2016	00:00:00	1829 SODA CANYON RD CNTY	ASO
05/20/2016	00:00:00	0834 SODA CANYON RD	ASO

NAPA SHERIFF'S DEPARTMENT
 CONTROLLED DOCUMENT
 NOT TO BE DUPLICATED
 RELEASED TO Lauren Arifians
 RELEASED BY TKS
 DATE 3-10-17

ACTDATE	ACTTIME	STREET	NATURECODE
05/20/2016	00:00:00	0953 SODA CANYON RD	PDOWN
05/26/2016	00:00:00	0906 SODA CANYON RD	SEIZU
05/28/2016	00:00:00	1023 SODA CANYON RD	ASO
05/28/2016	00:00:00	1023 SODA CANYON RD	ASO
06/01/2016	00:00:00	0915 SODA CANYON RD	CODE11
06/01/2016	00:00:00	1035 SODA CANYON RD	FRAUD
06/05/2016	00:00:00	1444 SODA CANYON RD	TRES
06/09/2016	00:00:00	0716 SODA CANYON RD	594
06/11/2016	00:00:00	0904 SODA CANYON RD / SODA SPRINGS RD	TRES
06/17/2016	00:00:00	1524 SODA CANYON RD	BREATH
06/18/2016	00:00:00	2209 SODA CANYON RD	415
06/18/2016	00:00:00	2349 SODA CANYON RD	415
06/19/2016	00:00:00	1536 SODA CANYON RD	CODE11
06/19/2016	00:00:00	1536 SODA CANYON RD	CODE11
06/28/2016	00:00:00	0331 SODA CANYON RD	1033
07/06/2016	00:00:00	1023 SODA CANYON RD	CA
07/24/2016	00:00:00	2130 SODA CANYON RD	415
07/25/2016	00:00:00	0909 SODA CANYON RD	FU
07/25/2016	00:00:00	1926 SODA CANYON RD	1144
07/26/2016	00:00:00	0855 SODA CANYON RD	CODE11
07/26/2016	00:00:00	0900 SODA CANYON RD	PATROL
07/26/2016	00:00:00	0912 SODA CANYON RD	CODE11
07/26/2016	00:00:00	0917 SODA CANYON RD / SODA SPRINGS RD	PATROL
07/26/2016	00:00:00	1245 SODA CANYON RD	CA
07/27/2016	00:00:00	1723 SODA CANYON RD	TC
08/04/2016	00:00:00	2319 SODA CANYON RD	1033
08/07/2016	00:00:00	0822 SODA CANYON RD	1030
08/11/2016	00:00:00	1227 SODA CANYON RD	488
08/13/2016	00:00:00	0046 SODA CANYON RD	TC
08/24/2016	00:00:00	0739 SODA CANYON RD	1030
08/27/2016	00:00:00	1615 SODA CANYON RD	1033
08/28/2016	00:00:00	1211 SODA CANYON RD / SODA SPRINGS RD	TRES
09/01/2016	00:00:00	1947 SODA CANYON RD	CODE11
09/03/2016	00:00:00	2207 SODA CANYON RD	CHEST

NAPA SHERIFF'S DEPARTMENT
 CONTROLLED DOCUMENT
 NOT TO BE DUPLICATED
 RELEASED TO Lauren Griffith
 RELEASED BY TKS
 DATE 3-10-17

ACTDATE	ACTTIME	STREET	NATURECODE
09/07/2016	00:00:00	0229 SODA CANYON RD	VCK
09/09/2016	00:00:00	1214 SODA CANYON RD	FU
09/11/2016	00:00:00	0956 SODA CANYON RD	488
09/11/2016	00:00:00	1632 SODA CANYON RD	SCK
09/12/2016	00:00:00	0627 SODA CANYON RD	ASO
09/21/2016	00:00:00	0541 SODA CANYON RD	CODE11
09/22/2016	00:00:00	0956 SODA CANYON RD	PATROL
09/23/2016	00:00:00	1357 SODA CANYON RD	PATROL
09/24/2016	00:00:00	0741 SODA CANYON RD	SHOTS
09/24/2016	00:00:00	1304 SODA CANYON RD	PATROL
09/25/2016	00:00:00	1605 SODA CANYON RD	MAIL
09/25/2016	00:00:00	1610 SODA CANYON RD	1030
09/26/2016	00:00:00	1555 SODA CANYON RD	PATROL
09/27/2016	00:00:00	1604 SODA CANYON RD	FOUND
09/28/2016	00:00:00	1352 SODA CANYON RD CNTY	FU
10/01/2016	00:00:00	1745 SODA CANYON RD	CODE11
10/01/2016	00:00:00	1746 SODA CANYON RD	CHEST
10/04/2016	00:00:00	0031 SODA CANYON RD	ATC
10/15/2016	00:00:00	1855 SODA CANYON RD	SHOTS
10/21/2016	00:00:00	1806 SODA CANYON RD / SODA SPRINGS RD	RECK
10/30/2016	00:00:00	1126 SODA CANYON RD	STROK
10/31/2016	00:00:00	1004 SODA CANYON RD	ASO
10/31/2016	00:00:00	1148 SODA CANYON RD	ASO
10/31/2016	00:00:00	2349 SODA CANYON RD / SODA SPRINGS RD	MA
11/04/2016	00:00:00	1347 SODA CANYON RD	PATROL
11/14/2016	00:00:00	1249 SODA CANYON RD	HAZCON
11/16/2016	00:00:00	1059 SODA CANYON RD	1030
11/27/2016	00:00:00	2247 SODA CANYON RD CNTY	PCK
12/01/2016	00:00:00	1158 SODA CANYON RD	HARASS
12/03/2016	00:00:00	0859 SODA CANYON RD	ASO
12/11/2016	00:00:00	1245 SODA CANYON RD	1033
12/15/2016	00:00:00	0341 SODA CANYON RD	CODE11
12/18/2016	00:00:00	0146 SODA CANYON RD	CODE11
12/20/2016	00:00:00	0703 SODA CANYON RD	SEIZU

NAPA SHERIFF'S DEPARTMENT
 CONTROLLED DOCUMENT
 NOT TO BE DUPLICATED
 RELEASED TO Lauren Griffiths
 RELEASED BY TFS
 DATE 3-10-17

ACTDATE	ACTTIME	STREET	NATURECODE
12/29/2016	00:00:00	0936 SODA CANYON RD	TC
12/29/2016	00:00:00	1018 SODA CANYON RD	MAIL
12/31/2016	00:00:00	1134 SODA CANYON RD / SODA SPRINGS RD	TRES
01/08/2017	00:00:00	1202 SODA CANYON RD	1033
01/09/2017	00:00:00	1659 SODA CANYON RD	MAIL
01/14/2017	00:00:00	0311 SODA CANYON RD CNTY	PCK
01/20/2017	00:00:00	2148 SODA CANYON RD	1033
01/22/2017	00:00:00	0150 SODA CANYON RD CNTY	PCK
01/22/2017	00:00:00	0406 SODA CANYON RD	1033
01/26/2017	00:00:00	1320 SODA CANYON RD / SODA SPRINGS RD	TC
02/06/2017	00:00:00	0853 SODA CANYON RD	CHEST
02/16/2017	00:00:00	1331 SODA CANYON RD	DRUG
03/06/2017	00:00:00	1419 SODA CANYON RD	CODE11

NAPA SHERIFF'S DEPARTMENT
 CONTROLLED DOCUMENT

NOT TO BE DUPLICATED

RELEASED TO Lauren Griffiths
 RELEASED BY TKS

DATE 3-10-17

Agcy Code	IBR Code	Description
0010	H	HOMICIDE
0012	H	SHOOTING
0090	1	TRAFFIC ACCIDENT
0201	3	TRESPASSING
1018	7	PAPER SERVICE
1021	9	PHONE MESSAGE
1030	2	SUSPICIOUS
1033	1	ALARM
1056	3	SUICIDE
1070	2	PROWLER
10851	4	STOLEN VEHICLE
10852	4	VEHICLE TAMPERING IN PROGRESS
1091B	8	BARKING DOG
1123	7	PARKING PROBLEM
1124	9	ABANDONED VEHICLE
1125	5	TRAFFIC HAZARD
1144	1	CORONER CASE
1148	8	TRANSPORT
1166A	5	TRAFFIC SIGNAL PROBLEM
1184	5	DIRECT TRAFFIC
1199	0	OFFICER NEEDS HELP
187	3	MURDER
207	2	KIDNAPPING
211	1	ROBBERY
215	2	CAR JACKING
23152	4	DRUNK DRIVER
261	1	RAPE
29	8	WARRANT/INFORMATION CHECK
308B	7	MINOR IN POSS OF CIGS
314	4	INDECENT EXPOSURE
415	2	DISTURBANCE OF THE PEACE
417	2	BRANDISHING
459	2	BURGLARY
470	4	FORGERY
476	4	PASSING BAD CHECK
487	4	GRAND THEFT OVER \$400 LOSS
488	4	PETTY THEFT UNDER \$400 LOSS
5150	3	MENTAL CASE

Agcy Code	IBR Code	Description
594	4	VANDALISM
647F	4	DRUNK SUBJECT
653M	7	TELEPHONE HARASSMENT
AA	2	AGENCY ASSIST
ABC	5	ABC VIOLATION
ABD...	1	ABDOMINAL PAIN
ACH...	6	AREA CHECK
ACK	6	AREA CHECK
ADS...	4	ACCIDENTAL DISCHARGE - SHOOTING
AIR	1	AIRPLANE CRASH
ALLER	1	ALLERGIC REACTION
APB	9	APB BROADCAST
APP...	1	APPLIANCE FIRE
ARC	1	ARCING WIRES
ARR...	9	ARREST
ARS...	2	ARSON
ASD	9	ALTERNATE SERVICE DELIVERY CALL
ASO	9	ANIMAL CONTROL CALLOUT
ASS...	1	ASSAULT
ASSI...	9	NOTIFY ON CALL/ALLIED AGENCY...
ATC	7	ATTEMPT TO CONTACT
ATL	6	ATTEMPT TO LOCATE
BACK	1	BACK PAIN
BAR...	8	BAR CHECK
BC	9	BUILDING CHECK
BCK	9	BUSINESS CHECK
BIKE	5	BICYCLE STOP
BIRTH	1	CHILD BIRTH
BITE	1	BITE ANIMAL HUMAN INSECT REPTILE
BLEED	1	BLEEDING PROBLEM
BOAT	1	BOAT
BOMB	2	BOMB
BRE...	1	BREATHING PROBLEM
BRE...	3	BREATHING PROBLEM
BURN	1	BURN VICTIM
BUSH	1	BUSH FIRE
CA	2	CITIZEN ASSIST
CAB...	3	CHILD ABUSE
CAN	8	CANCEL
CCUST	4	CHILD CUSTODY PROBLEM
CHE...	9	CHECKPOINT
CHEST	1	CHEST PAIN
CHIM	1	CHIMNEY FIRE

Agcy Code	IBR Code	Description
CHO...	1	CHOKING
CITE	8	CITATION
CIVIL	4	CIVIL PROBLEM
CKP...	9	CHECKPOINT
CM...	2	CHILD MOLEST
CNE...	3	CHILD NEGLECT
COD...	3	BOMB THREAT
COD...	3	911 HANG UP CALL
CODE5	8	STAKEOUT
COD...	2	COUNTY ROAD BLOCK
COV...	9	AMBULANCE MOVE UP AND COVER ZONE
CP	9	CHECKPOINT
CSH...	6	CARELESS SHOOTING
CST...	2	CHILD STEALING
DIABE	1	DIABETIC PROBLEM
DIA...	1	DIABETIC PROBLEM
DIR...	3	DIRECTED PATROL - NPD
DIS...	6	DISABLED VEHICLE
DPAT	3	DIRECTED PATROL
DRILL	9	FIRE DRILL
DRO...	1	DROWNING
DRUG	6	DRUG ACTIVITY
EAB...	7	ELDER ABUSE
ELECT	1	ELECTRICAL SHOCK
ELE...	1	ELECTRICAL FIRE
EMB...	8	EMBEZZLEMENT
ESC...	2	PRISONER ESCAPE
ESC...	8	ESCORT
EXP...	1	EXPLOSION
EXPOS	1	ENVIRONMENTAL EMERGENCY
EXT...	7	EXTORTION
EYE	1	EYE PROBLEM
FALL	1	FALL VICTIM
FENCE	1	FENCE FIRE
FGI	9	FISH AND GAME INFORMATION
FIRE	1	FIRE NEEDED
FIRE...	6	FIREWORKS
FLAG	6	CITIZEN FLAGDOWN
FORG	4	FORGERY
FOU...	5	FOUND
FP	2	FOOT PURSUIT
FRA...	7	FRAUD
FTP	5	FAILURE TO PAY

Agcy Code	IBR Code	Description
FTY	5	FAILURE TO YIELD
FU	8	FOLLOW UP
FUEL	2	FUEL LEAK
FUR...	1	FURNACE FIRE
GDU...	7	GARBAGE DUMP
GRASS	1	GRASS FIRE
GUN	2	SUBJECT WITH A GUN
HAR...	4	HARASSMENT
HAZ...	4	HAZARDOUS CONDITION
HAZ...	1	HAZMAT
HEAD	1	HEADACHE
HEA...	1	HEATER FIRE
INFO	9	INFORMATION
JPROB	6	JUVENILE PROBLEM
KNIFE	2	SUBJECT WITH A KNIFE
LEWD	4	LEWD CONDUCT
LOCK	2	LOCKOUT
LOC...	7	LOCATE RUNAWAY
LOI...	5	LOITERING
LOST	3	LOST
MA	5	MOTORIST ASSIST
MAIL	8	MAIL TAMPERING/THEFT
MEDIC	1	MEDICAL NEEDED
MHAZ	3	MAJOR HAZMAT
MIS...	3	MISSING PERSON
MPE...	3	MISSING PERSON
MTP	6	MAINTAIN THE PEACE
MUT...	9	MUTUAL AID
NAT...	1	NATURAL GAS LEAK
NBP	8	NEIGHBORHOOD BASED POLICING
NCO	6	NAPA COUNTY ORDINANCE VIOLATION
NMC	6	NAPA MUNICIPAL CODE VIOLATION
NPR...	4	NEIGHBOR PROBLEM
NSH	9	NAPA STATE HOSPITAL 911 PROBLEM
NSIB	8	NSIB EVENT
OAD...	7	OVERDUE ADULT
OBO...	7	OVERDUE BOAT
ODOR	2	UNKNOWN ODOR
OJUV	7	OVERDUE JUVENILE
OPEN	4	OPEN
OVEH	7	OVERDUE VEHICLE
OVEN	1	OVEN FIRE
OVE...	1	OVERDOSE

Agcy Code	IBR Code	Description
OVE...	7	OVERDUE
PAT...	9	PATROL INFO
PC	8	PATROL CHECK
PCK	8	PATROL CHECK
PDO...	1	PERSON DOWN
PED...	9	PED CHECK
POLI...	2	POLICE NEEDED
RA	7	RUNAWAY
RECK	3	RECKLESS DRIVER
REP...	8	REPORT UNDETERMINED
RES...	1	RESCUE
RIOT	1	RIOT
SC	6	SECURITY CHECK
SCK	8	SECURITY CHECK
SEA...	4	PROBATION/PAROLE SEARCH
SEIZU	1	SEIZURE
SHO...	1	SHOOTING
SHOP	6	SHOPLIFTER IN CUSTODY
SHOTS	2	SHOTS FIRED
SICK	1	SICK PERSON
SMO...	1	SMOKE INVESTIGATION
SPEED	6	SPEEDING VEHICLE
STABB	1	STABBING
STOVE	1	STOVE FIRE
STR...	1	STROKE PATIENT
STR...	1	STROKE
STR...	1	STRUCTURE FIRE
SUIC	1	SUICIDE
TC	1	TRAFFIC COLLISION
TEST	9	TEST CALL
THR...	5	THREATS
TRAFF	1	TRAFFIC ACCIDENT
TRA...	1	AMBULANCE TRANSPORT - NO FIRE...
TRA...	1	TRANSFORMER FIRE
TRA...	1	TRASH FIRE
TRA...	1	TRAUMA
TREE	1	TREE FIRE
TRES	6	TRESPASSING
TRU...	6	TRUANT
TS	2	TRAFFIC STOP
UNC...	1	UNCONSCIOUS PERSON
UNK	1	UNKNOWN
UN...	4	UNWANTED SUBJECT

Agcy Code	IBR Code	Description
VC	6	VEHICLE CHECK
VCK	6	VEHICLE CHECK
VDOG	4	VICIOUS DOG
VEGE	1	VEGETATION FIRE
VFIRE	1	VEHICLE FIRE
VHO...	1	VEHICLE INTO HOUSE
VIOL	4	VIOLATION OF ORDER
VP	2	VEHICLE PURSUIT
WA	9	WARRANT ARREST
WALK	5	WALKAWAY
WC...	5	WELFARE CHECK
WCK	5	WELFARE CHECK
WILD	1	WILDLAND FIRE
WIRE	2	WIRE DOWN

EXHIBIT “21”

EXHIBIT “21”

EXHIBIT “21”

California Highway Patrol (CHP) Incident Report Summary (1/21/13 to 3/22/17)

Date	Incident #	Incident Description	Location of Incident	Time of Day	Duration of Incident
1/21/2013	130121GG00952	1182 - 2 vehicle traffic collision, non-injury. White Chevy truck TCD into side of mountain, blocking road. Vehicle is not driveable. Tow required.	Soda Canyon Road at mile marker 2.	12:29 PM	58 minutes
4/8/2013	130408GG02563	1179 - 2 vehicle traffic collision, injury. Person hospitalized at Queen of the Valley for major injuries. Tow required.	Soda Canyon Road, 300 yards from Silverado Trail.	7:16 PM	2 hours 24 minutes
5/26/2013	130526GG03104	1182 - Traffic collision, non-injury. Toyota Prius partially blocking road. Two women were trying to turn around and ran off the roadway. Woman standing on Soda Canyon flagging down vehicles.	Soda Canyon Road at intersection with Soda Springs Road.	10:12 PM	2 hours, 26 minutes
7/3/2013	130703GG00933	1181 - Traffic collision, minor injuries. Xray on Moped vs. side of roadway. Xray in/out of consciousness.	2750 Soda Canyon Road.	11:35 AM	24 minutes
8/16/2013	130816GG00929	1182 - 2 vehicle traffic collision, non-injury. Air bags deployed, toyota corolla vs. truck, blocking lanes on silverado trail, damage to front end of vehicle.	Soda Canyon Road at intersection with Silverado Trail.	9:24 AM	49 minutes
10/16/2013	131016GG01412	1182 - 2 vehicle traffic collision, non-injury. 2 tires blown out on hill; trying to reverse; possibly trying to leave. Involved party told other driver not to call 911. Vehicle 1/4 mile up from fire station, vehicle reversed and pulled into ditch on roadway.	Soda Canyon Road at intersection with Silverado Trail.	2:18 PM	45 minutes
10/21/2013	131021GG00603	1182 - 2 vehicle traffic collision, non-injury. Blocking roadway. Tow required.	Soda Canyon Road at intersection with Silverado Trail.	7:59 AM	40 minutes
11/24/2013	131124GG02387	1182 - Traffic collision, non-injury. Car on side of road.	Soda Canyon Road, 1/2 mile from Loma Vista.	5:30 PM	33 minutes
12/17/2013	131217GG03587	1182 - Traffic collision, non-injury. PGE guide wire down, NW corner, not live.	Soda Canyon Road at intersection with Silverado Trail.	10:19 PM	1 hour, 38 minutes
1/10/2014	140110GG02717	1182 - Traffic collision, non-injury. BMW vs PGE pole, airbags deployed, rear wheel took off, unable to move vehicle off roadway.	Soda Canyon Road at intersection with Silverado Trail.	5:53 PM	2 hours, 57 minutes
9/10/2014	140910GG01108	1179 - Traffic collision. Large semi truck on its side, white cab, single trailer, blocking the middle of the road, roadway is completely blocked, unable to get traffic by. Rear axle completely separated from the truck. Driver left vehicle, found at 2600 Soda Canyon Road on side of roadway with other people, has a broken shoulder. CalFire requested, heavy tow. Roadway may be blocked few hours. Soda Canyon Road 2 miles north of Soda Springs Road closed due to collision. First tow truck now hanging over cliff, trying to recover their own truck. Second tow company (Ramirez Tow) doing recovery on vehicle.	Soda Canyon Road at 2600 block.	9:55 AM	5 hours, 11 minutes.
3/17/2015	150317GG00614	1179 - Traffic collision. White Nissan Pathfinder vs tree. Vehicle is off the roadway, into bushes. Tow required. Driver hospitalized.	Northbound Silverado Trail at Soda Canyon Road.	7:09 AM	1 hour, 40 minutes
3/28/2015	150328GG03563	1182 - Traffic collision, non-injury. Driver/vehicle gone on arrival. Vehicle off road in a creek. 2-3 people walking toward paved road.	3030 Soda Canyon Road, bridge area on the dirt road 200 yards down the dirt road.	7:25 PM	1 hour, 44 minutes
4/12/2015	150412GG03602	1125 - Traffic Hazard, 4x4 Quad on street at night, subject arrested for possession of guns and shot guns.	Soda Canyon Road (exact location not specified).	8:34 PM	7 minutes
4/15/2015	150415GG01631	1183 - Traffic collision, unknown injury. Possible diabetic shock. Small compact dark vehicle parked just before Stagecoach gate. Owner of vehicle being transported to Queen of the Valley hospital. Tow required. Driver cited for 14601(1)(A), vehicle was impounded per 14602.	3555 Soda Canyon Road near Stagecoach Vineyards (on dirt road).	1:07 PM	4 hours, 40 minutes
4/20/2015	150420GG00631	1125A - Animal Hazard, deer in roadway.	Silverado Trail at Soda Canyon Road.	7:39 AM	1 hour, 6 minutes
4/24/2015	150424GG03930	23103 - Reckless Driving, male on 4wheel drive vehicle almost hit dogs while man was out walking his dog.	Soda Canyon Road at Silverado Trail.	9:21 PM	29 minutes
4/26/2015	150426GG01524	1183 - Traffic collision, unknown injury. White Acura vs Gray truck, blocking roadway. Driver advised he is driving and not from the area.	2368 Soda Canyon Road (intersection with Soda Springs Road).	12:04 PM	32 minutes

19	6/6/2015	150606GG03306	23152 - Driving Under Influence, driving on roadside, over double yellow lines, erratic speeds.	2900 Block Silverado Trail/Soda Canyon Road.	6:32 PM	7 minutes
20	6/28/2015	150628GG00038	(no description)	Silverado Trail at Soda Canyon Road.	9:26 AM	40 minutes
21	7/6/2015	150706GG04037	23013 - Reckless Driving, male on 4x4 Quad driving towards Soda Canyon Store; Tweaker that is squatting on Soda Canyon property, Has been arrested multiple times; occasionally possesses shotgun.	1200 Block Soda Canyon Road.	8:45 PM	12 minutes
22	7/7/2015	150707GG02214	23103 - Reckless Driving, gray Ford, vehicle weaving	Silverado Trail at Soda Canyon Road.	2:55 PM	4 minutes
23	7/15/2015	150715GG02473	23152 - Driving Under Influence, white Ford Explorer, unable to maintain.	Silverado Trail at Soda Canyon Road.	2:59 PM	20 minutes
24	8/29/2015	150829GG04545	Changed from 1183 Traffic Collision to 1015X-Xray - Arrest in custody; Vehicle found off the roadway.	1200 Block Soda Canyon Road.	9:38 PM	1 hour 53 minutes
25	9/7/2015	150907GG02368	23109 - Speed Contest; Lime Green Sedan vs. Black older Sedan; 90 mph	NB on Soda Canyon Road at Silverado Trail.	3:35 PM	7 minutes
26	9/17/2015	150917GG03723	23152 - Driving Under Influence; Black Mustang unable to Maintain; Citizen advised to not follow.	2368 Soda Canyon Road.	8:36 PM	13 minutes
27	10/3/2015	151003GG03037	23152 - Driving Under Influence; White Mazda Miata Weaving; Erratic speeds; Pulling into Van Der Heyden Winery.	Silverado Trail at Soda Canyon Road.	5:06 PM	10 minutes
28	10/24/2015	151024GG01564	1125 - Traffic Hazard; Lots of vans in area for event; Relay race in area; People congregating in middle of roadway; Man is getting married later today and expects approx. 300 people heading up road; Concerned about safety if road blocked.	Soda Canyon Road at Silverado Trail.	10:59 AM	9 minutes
29	11/14/2015	151114GG02581	23152 - Driving Under Influence; white limo, erratic breaking, erratic speeds between 30-55mph.	Silverado Trail at Soda Canyon Road.	3:45 PM	20 minutes
30	11/26/2015	151126GG01343	23152 - Driving Under Influence; unable to maintain lane, erratic braking.	Silverado Trail at Soda Canyon Road.	11:39 PM	17 minutes
31	12/19/2015	151219GG03730	23152 - Driving Under Influence; White Toyota or Nissan; Swerving; Driving into Oncoming Traffic.	Silverado Trail at Soda Canyon Road.	7:32 PM	18 minutes
32	12/28/2015	151228GG01007	FIRE - Report of fire; Saw gray smoke coming, negative flames; couple of burn piles; construction.	Soda Canyon at Soda Springs Road.	10:55 AM	33 minutes
33	1/6/2016	160106GG03274	1183 - Traffic Collision; Vehicle on left hand side of creek off roadway; 2 males involved; Nissan Sentra on its roof. Napa Valley Tow called.	Soda Canyon Road - 2 miles east of Silverado Trail (past the bridge).	7:17 PM	1 hour, 3 minutes
34	1/18/2016	160118GG03228	1125 - Traffic Hazard; Semit Truck Trailer partly blocking right lane around blind corner; Truck headed northbound on Soda Canyon.	Soda Canyon Road at Silverado Trail.	6:20 PM	44 minutes
35	4/6/2016	160406GG01308	23103 - Reckless Driving; white Chevy Impala all over roadway; Almost went off roadway.	Silverado Trail at Soda Canyon Road.	10:50 AM	3 minutes
36	4/7/2016	160407GG1058	23103 - Reckless Driving; dark colored sedan, unable to maintain	Silverado Trail at Soda Canyon Road.	9:10 AM	2 minutes
37	4/11/2016	160411GG02790	1179 - Traffic Collision; 1141 En Route; 2 vehicle collision; 1 party trapped; Fire Dept. en route for extrication; 1 part injured; AT&T Towing en route.	Soda Canyon Road at Silverado Trail.	5:23 PM	1 hour 10 minutes
38	5/2/2016	160502GG03769	1182 - Traffic Collision; no injuries; Rp got a call from young male, said he needed a tow in a hurry; was driving a low rider and high centered; then mentioned a ditch	Soda Springs Road at Soda Canyon Road	10:09 PM	40 minutes
39	5/6/2016	160506GG03042	FIRE - Report of fire; see smoke at above 1020; possible brush fire; a lot of rain; negative visibility of smoke	2425 Soda Canyon Road	5:43 PM	33 minutes
40	5/16/2016	160516GG02658	23152 - Driving under influence; gray nissan 240; over yellow lines into bike lane; unable to maintain speed or lane	Silverado Trail at Soda Canyon Road.	4:18 PM	12 minutes
41	5/20/2016	160520GG01533	23103 - Reckless Driving; Black Jeep chasing a black car possibly speeding	Silverado Trail at Soda Canyon Road.	12:07 PM	20 minutes
42	5/29/2016	160529GG03781	23152 - Driving under influence; swerving, unable to maintain lanes; driving into oncoming traffic	Silverado Trail at Soda Canyon Road.	10:29 PM	13 minutes

43	6/6/2016	160606GG02717	23103 - Reckless driving; silver toyota camry weaving/crossing double yellow line	Silverado Trail at Soda Canyon Road.	3:54 PM	35 minutes
44	6/18/2016	160618GG00239	23152 - Driving under influence; gray sedan; weaving - almost caused head on traffic collision; Napa SO Deputy responding	Silverado Trail at Soda Canyon Road.	1:28 PM	5 minutes
45	6/19/2016	160619GG02847	FIRE - Report of fire; in the Rector Canyon Area; Fire is working a fire in the area	Soda Canyon Road/Old Foss Valley Road	3:40 PM	7 minutes
46	7/27/2016	160727GG03142	1182 - Traffic collision, no injuries; Silver Dodge pickup truck versus silver Honda civic	Soda Canyon Road at Silverado Trail	5:23 PM	1 hour, 1 minute
47	8/3/2016	160803GG03920	1124 - Abandoned vehicle; 1/4 mile from trail - on the first turn as you head up Soda Canyon; White Jag parked here for a week; No plate info; Didn't advise if blocking	Soda Canyon Road at Silverado Trail	8:35 PM	3 minutes
48	8/3/2016	160803GG03928	1183 - Traffic collision - unknown injuries; 6 miles - on gravel part of the road; grey Hyundai; Seemed to pass out while RP was talking to him; Slurring his speech saying looking for American Canyon; Off into the brush and keeps trying to leave but may start a fire; Driver 23152 (under the influence); But now RP hears the vehicle starting and subject trying to leave; Said 6 miles up from Silverado Trail on Soda Canyon; 6 and 1/2 miles up Soda Canyon negative TCS found; Inquiry with RP if vehicle left scene; RP VM only; UTL to end of Soda Canyon going 98; Very end of Soda and turns to left; 1185R - vehicle is approximately 2 feet off roadway; 1039 AT&T Tow	Soda Canyon Road/Old Foss Valley Road	8:36 PM	3 hours, 15 minutes
49	8/4/2016	160804GG02404	PKG - Parking Violations; White Jaguar; Parked here over a week; Party advises suspicious because vehicle doesn't look like belongs here "too nice of a car to be here"; Vehicle on left side of Soda Canyon; Checked it last night/negative 1125	Soda Canyon Road at Silverado Trail	3:11 PM	48 minutes
50	8/12/2016	160812GG00793	23103 - Reckless driving; Dark gray Mazda sedan; Possible a racing stock car; Tailgating; Passing over double yellow line; Passing 2-3 vehicles at a time; Almost hit oncoming traffic; Approximately 85 MPH	Silverado Trail at Soda Canyon Road.	8:40 AM	14 minutes
51	8/25/2016	160825GG03393	1125 - Traffic Hazard; Oak tree down blocking west bound lane on curve; 2.8 miles up from Silverado Trail; 1039 CORDS per Napa; Napa Fire Department; UTL to end of Soda Canyon	2300 Soda Canyon Road	6:23 PM	31 minutes
52	9/9/2016	160909GG03416	23152 - Driving under influence; Dark gray Toyota Prius; Erratic speeds/slowng and speeding up; Swerving; Crossing over white line; Unable to maintain lanes; IT was flagged down	Silverado Trail at Soda Canyon Road.	7:37 PM	22 minutes
53	9/27/2016	160927GG03388	23152 - Driving under influence; South bound Silverado Trail; Silver sedan; Unknown make or model or plates possibly an Acura; Swerving - nearly hit a bicyclist	Silverado Trail at Soda Canyon Road.	6:15 PM	19 minutes
54	10/3/2016	161003GG03339	1125 - Traffic hazard; Tree down, partial 1124; In both lanes; Request CORDS or Fire; Fire en route	Soda Canyon Road at Loma Vista	5:53 PM	1 hour
55	10/15/2016	161015GG03476	Shots fired; Gunshots heard over the last 20 minutes; Sounds like they are coming to the west of RP address Soda Canyon Road; Routed officer safety	Soda Canyon Road/Old Foss Valley Road	6:53 PM	9 minutes
56	10/28/2016	161028GG03198	1124 - Abandoned vehicle; It's foggy and hard to see out there. Vehicle is GOA and Neg Fog in the area	Soda Canyon Road near mile marker 5	5:53 PM	50 minutes
57	10/31/2016	161031GG04383	1125 - Traffic Hazard; Silver Dodge Ram; Approx 4 feet down in a ditch on RHS; Request 1185R	Soda Canyon Road at Soda Springs Rd	11:52 PM	1 hour, 22 minutes
58	11/14/2016	161114GG00985	23103 - Reckless Driving; Blue volkswagen bug; Braking for no reason; Weaving; 20-40mph; Weaving over double yellow	Northbound Soda Canyon just north of Silverado Trail	9:18 AM	8 minutes
59	11/17/2016	161117GG03445	1183 - Traffic Collision; At the old school; Across from the Soda Canyon Store; SUV up the embankment; into some rocks; Confirmed 1182 only; Large white Ford Expedition versus embankment; Large rocks in roadway; Call Napa Valley tow and confirm en route; Per NV Tow affirm and driver is almost 97	Soda Canyon Road/Silverado Trail	11:31 AM	40 minutes

EXHIBIT “22”

EXHIBIT “22”

EXHIBIT “22”

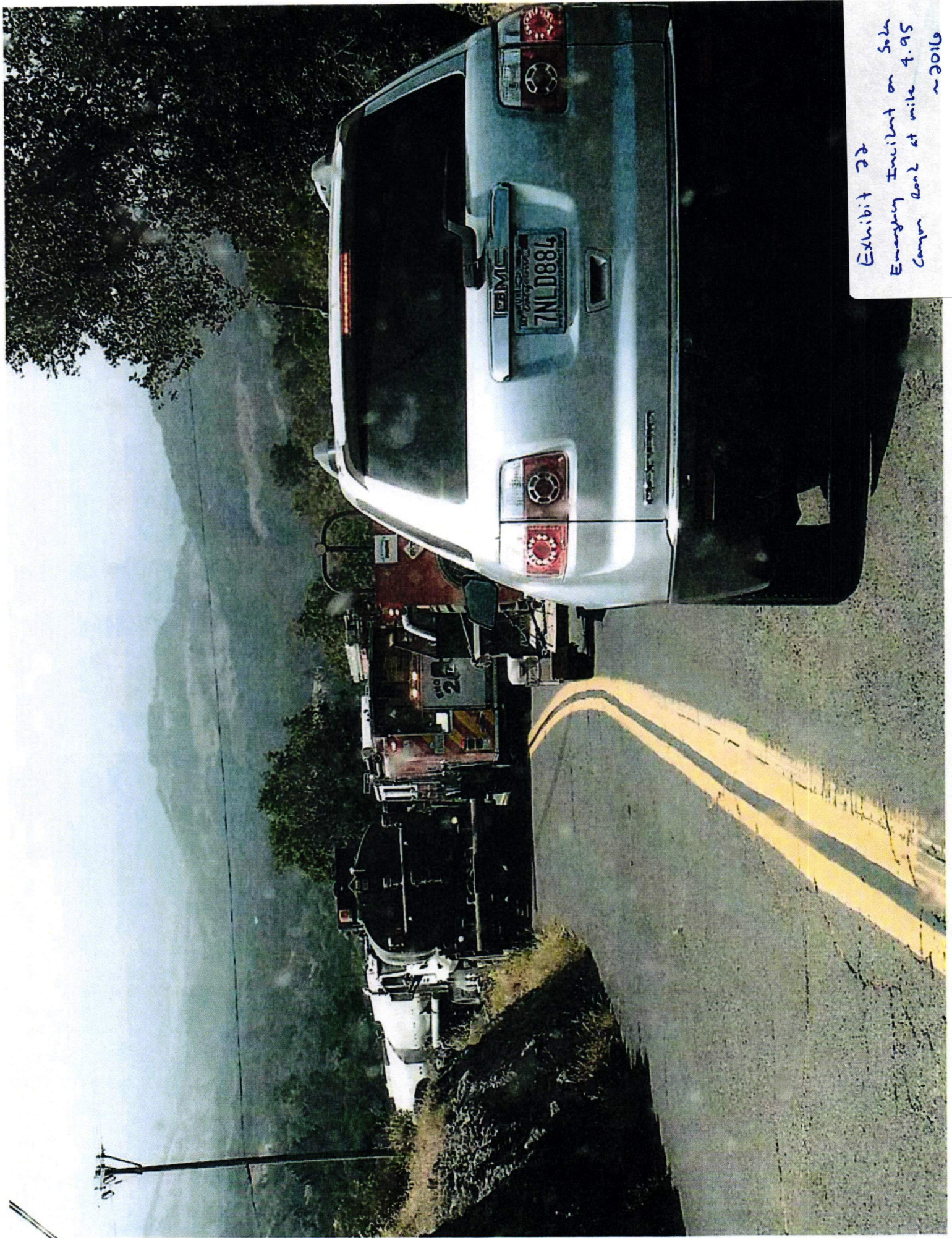


Exhibit 32
Emergency Incident on Soth
Canyon Road at mile 4.95
~2016