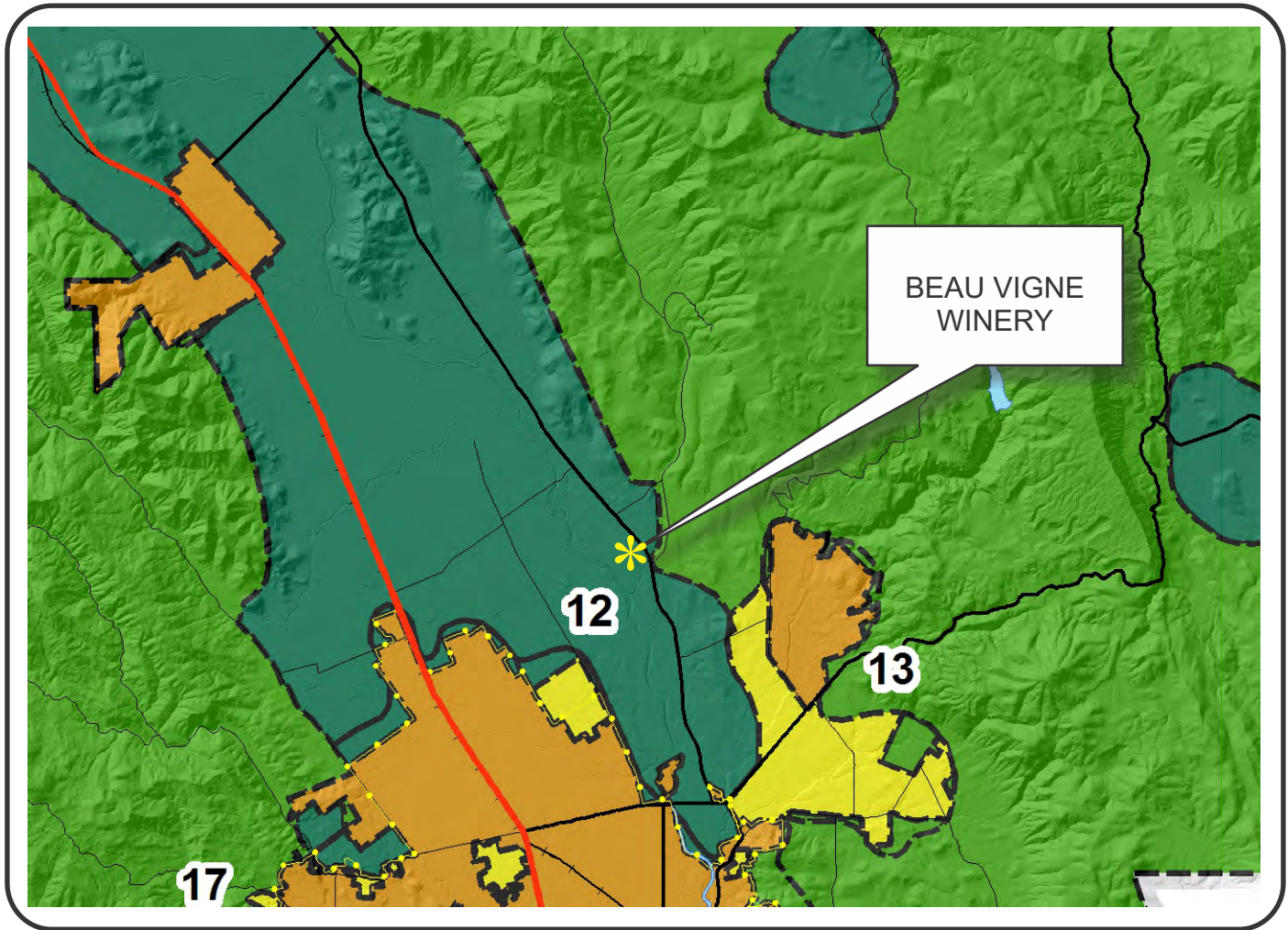


“K”

Graphics

NAPA COUNTY LAND USE PLAN 2008 - 2030



LEGEND



URBANIZED OR NON-AGRICULTURAL

- Study Area
- Cities
- Urban Residential*
- Rural Residential*
- Industrial
- Public-Institutional
- Napa Pipe Mixed Use

OPEN SPACE

- Agriculture, Watershed & Open Space
- Agricultural Resource

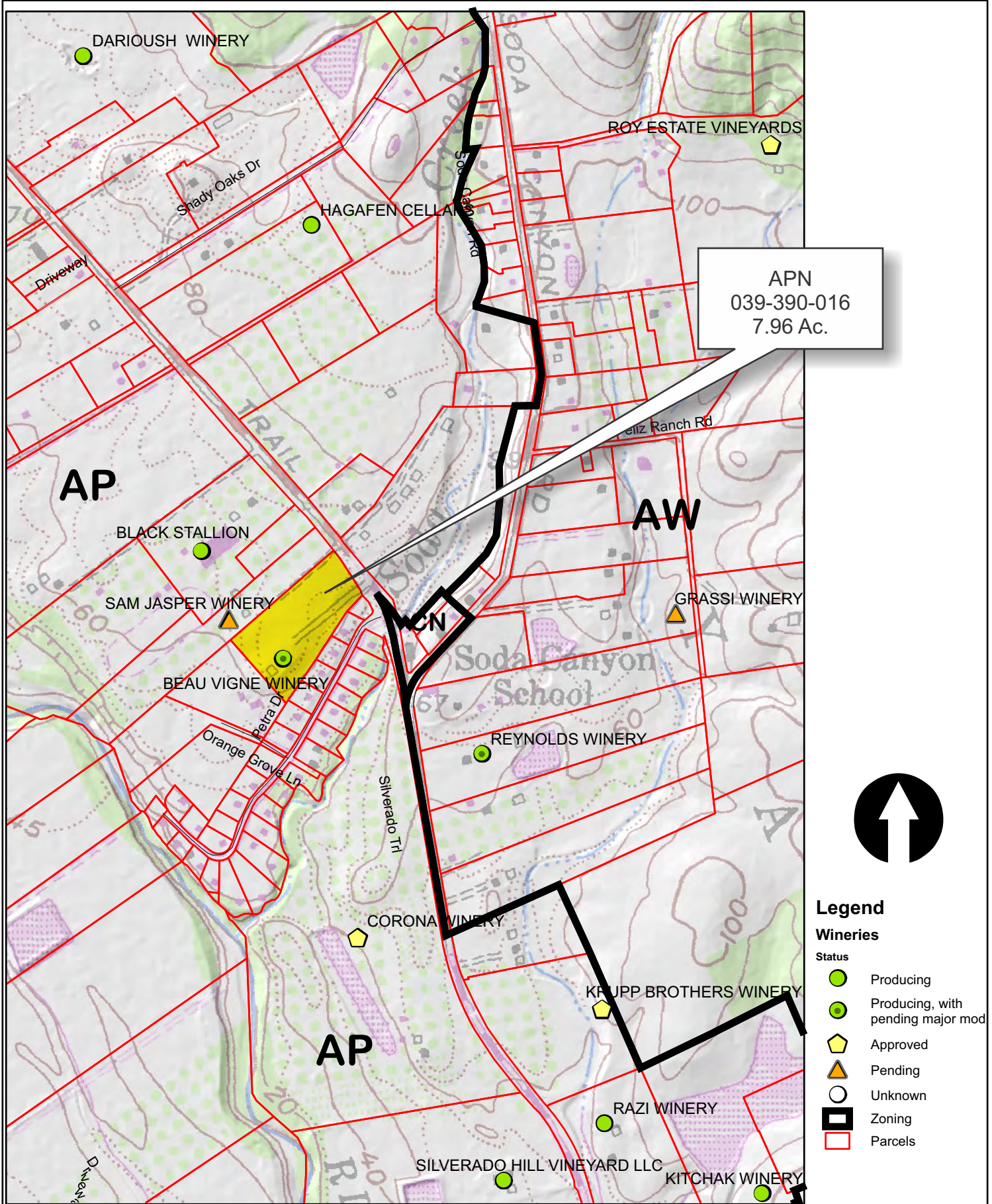
TRANSPORTATION

- Mineral Resource
- Limited Access Highway
- Major Road
- American Canyon ULL
- City of Napa RUL
- Landfill - General Plan
- Secondary Road
- Airport
- Railroad
- Airport Clear Zone

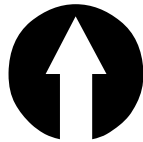
* See Action Item AG/LU-114.1 regarding agriculturally zoned areas within these land use designations

APN
039-390-016
08-12-2016
UP
00

BEAU VIGNE WINERY



APN
039-390-016
7.96 Ac.

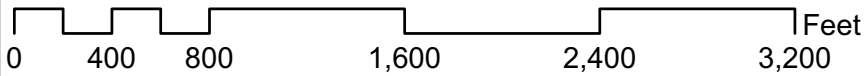


Legend

Wineries

Status

- Producing
- Producing, with pending major mod
- Approved
- Pending
- Unknown
- Zoning
- Parcels



08-12-2016

UP

00

Napa County Conservation
Development and Planning Department

P15-00200_Beau-Vigne-Winery_up1.cdr

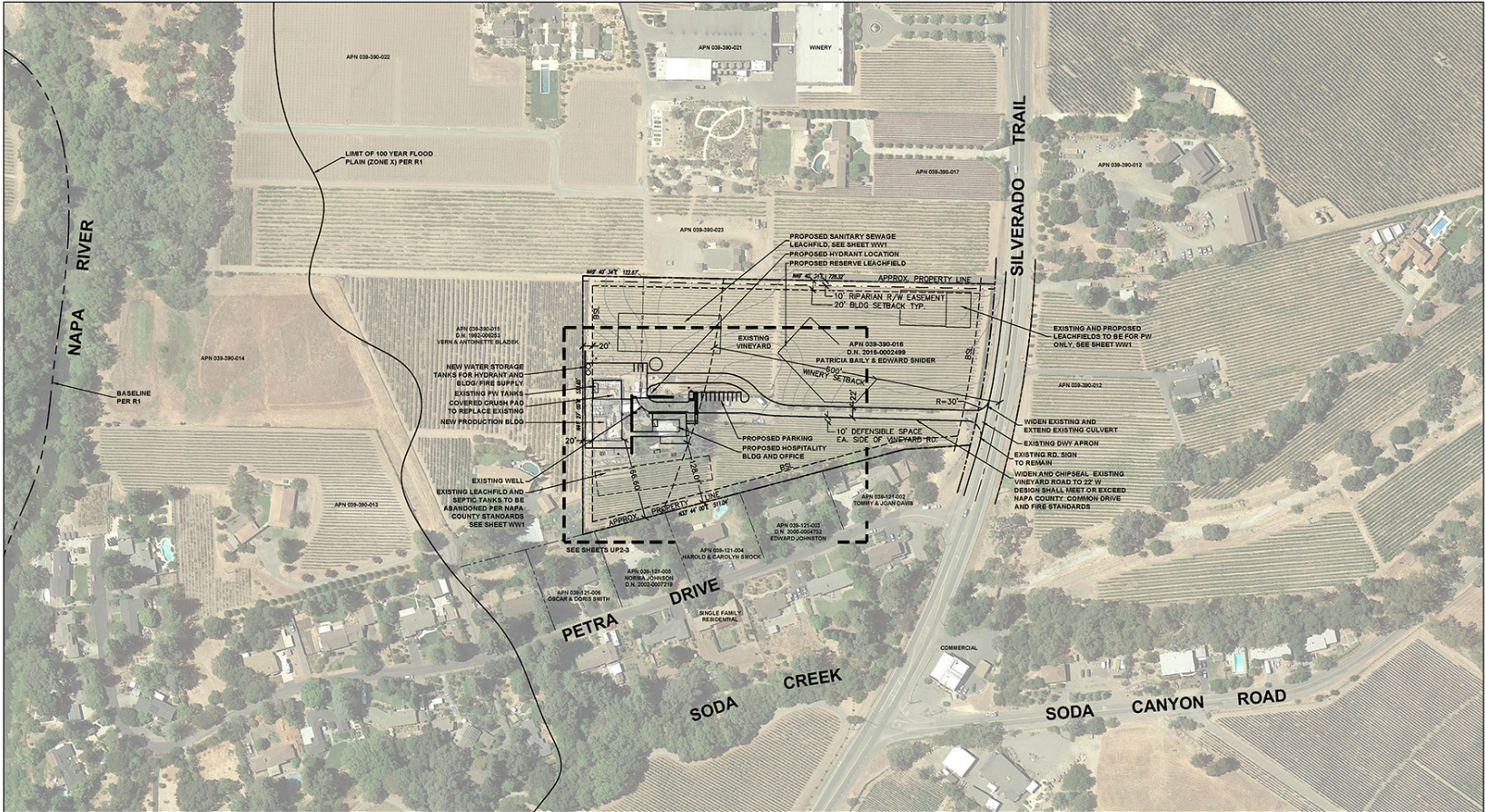
BEAU VIGNE WINERY



Existing Conditions

BEAU VIGNE ESTATE WINERY

CONCEPTUAL SITE IMPROVEMENT PLANS



APN 039-390-016

OVERALL SITE PLAN
 BEAU VIGNE WINERY
 4057 SILVERADO TRAIL
 NAPA, CALIFORNIA

Submit / Revision

Job No: 15-2188
 Drawn By: DM
 Checked By: DS
 Date: USE PDMT SUBMITTING 09-09-2013

Sheet Number
UP1
 1 of 4

PROJECT INFORMATION

OWNER/APPLICANT: BEAU VIGNE ESTATE WINERY
 P.O. BOX 6412
 NAPA, CA 94581

SITE ADDRESS: 4057 SILVERADO TRAIL, NAPA, CA
 APN: 039-390-016
 ZONING: AP (AGRICULTURAL PRESERVATION)
 PARCEL SIZE: 7.96± ACRES
 PROJECT SIZE: 1.40± ACRES

PARKING SUMMARY	
VISITOR:	11 (INCLUDES 1 ACCESSIBLE)
EMPLOYEE:	3
TOTAL:	14

PARCEL NOT IN GROUND WATER DEFICIENT AREA

OUT:	186 CU. YARDS
FILL:	1223 CU. YARDS
NET IMPORT:	537 CU. YARD

DOMESTIC WATER SOURCE: EXISTING PRIVATE WELL
 DOMESTIC FIRE PROTECTION WATER SOURCE: NEW PRIVATE STORAGE TANK
 DOMESTIC WATER DISPOSAL: EXISTING ONSITE SEPTIC
 PROCESS WATER DISPOSAL: PRIVATE OFFSITE

NOTES

- SEE SHEET UP3 FOR SITE TOPOGRAPHIC INFORMATION
- PROPERTY LINE SHOWN ON THESE PLANS DO NOT REPRESENT A BOUNDARY SURVEY AND ARE PROVIDED FOR REFERENCE ONLY. SEE SHEET UP2 FOR ADDITIONAL INFORMATION.
- SEE SHEET UP3 FOR LEGEND AND ABBREVIATIONS

REFERENCES
 R1 FIRM NO. 000650510F

SHEET INDEX

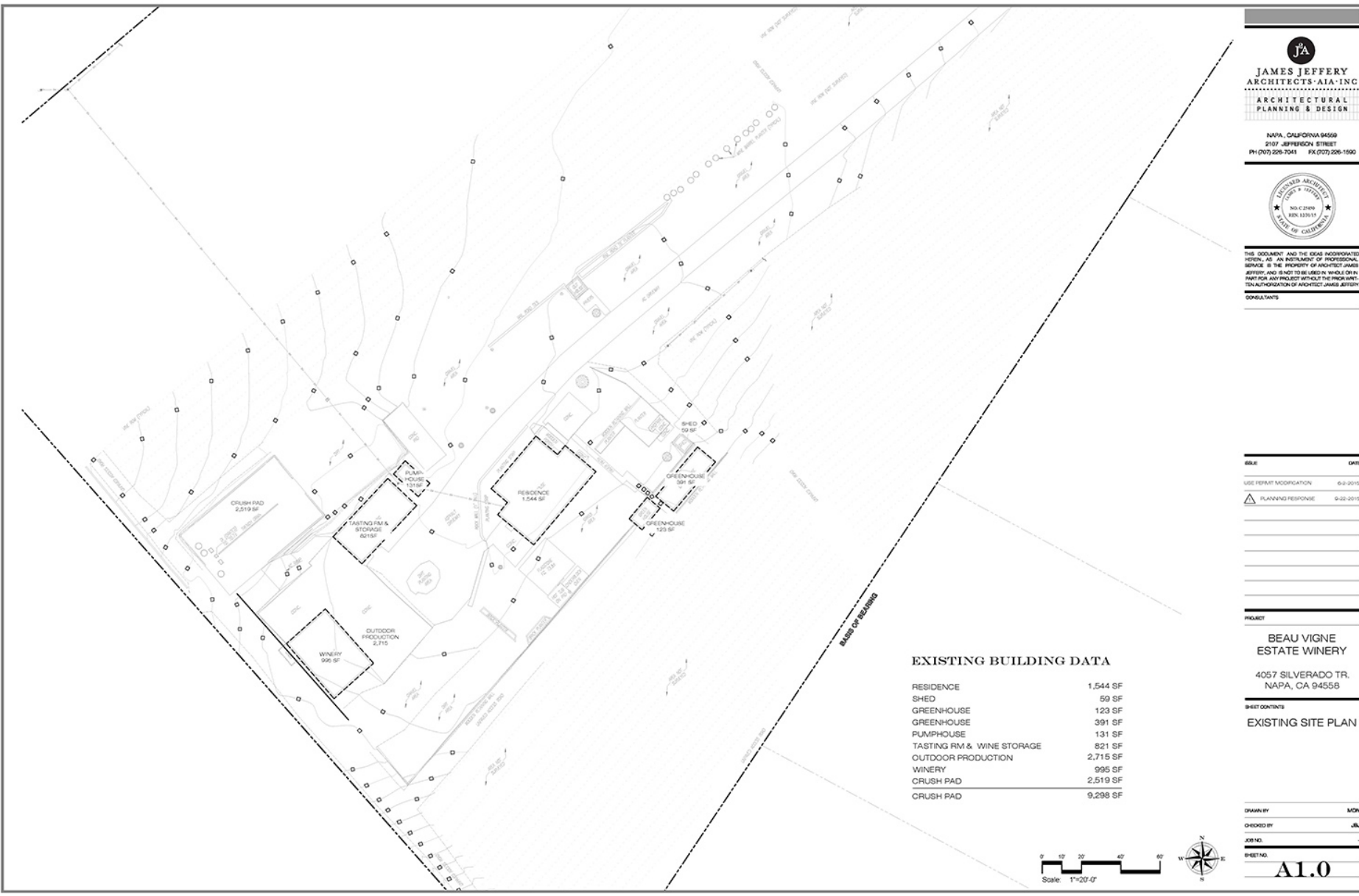
UP1 OVERALL SITE PLAN
 UP2 EXISTING CONDITIONS - DEMOLITION PLAN
 UP3 PROPOSED CONDITIONS

SITE AREAS

PROPOSED IMPERVIOUS AREA:	40,969 SF
EXISTING IMPERVIOUS AREA:	22,421 SF
TOTAL ADDITIONAL IMPERVIOUS AREA:	27,498 SF



15-2188-01-UP1.dwg - 09/09/2013 10:00:00 AM - 15-2188-01-UP1.dwg - 09/09/2013 10:00:00 AM - 15-2188-01-UP1.dwg



THIS DOCUMENT AND THE IDEAS INCORPORATED
 HEREIN, AS AN INSTRUMENT OF PROFESSIONAL
 SERVICE, IS THE PROPERTY OF ARCHITECT JAMES
 JEFFERY AND IS NOT TO BE REPRODUCED OR
 USED IN ANY PROJECT WITHOUT THE PRIOR WRITTEN
 AUTHORIZATION OF ARCHITECT JAMES JEFFERY
 CONSULTANTS

DATE	REVISION
0-9-2015	USE PERMIT MODIFICATION
9-22-2015	PLANNING RESPONSE

PROJECT
 BEAU VIGNE
 ESTATE WINERY
 4057 SILVERADO TR.
 NAPA, CA 94558

EXISTING BUILDING DATA

RESIDENCE	1,544 SF
SHED	59 SF
GREENHOUSE	123 SF
GREENHOUSE	391 SF
PUMPHOUSE	131 SF
TASTING RM & WINE STORAGE	821 SF
OUTDOOR PRODUCTION	2,715 SF
WINERY	995 SF
CRUSH PAD	2,519 SF
CRUSH PAD	9,298 SF

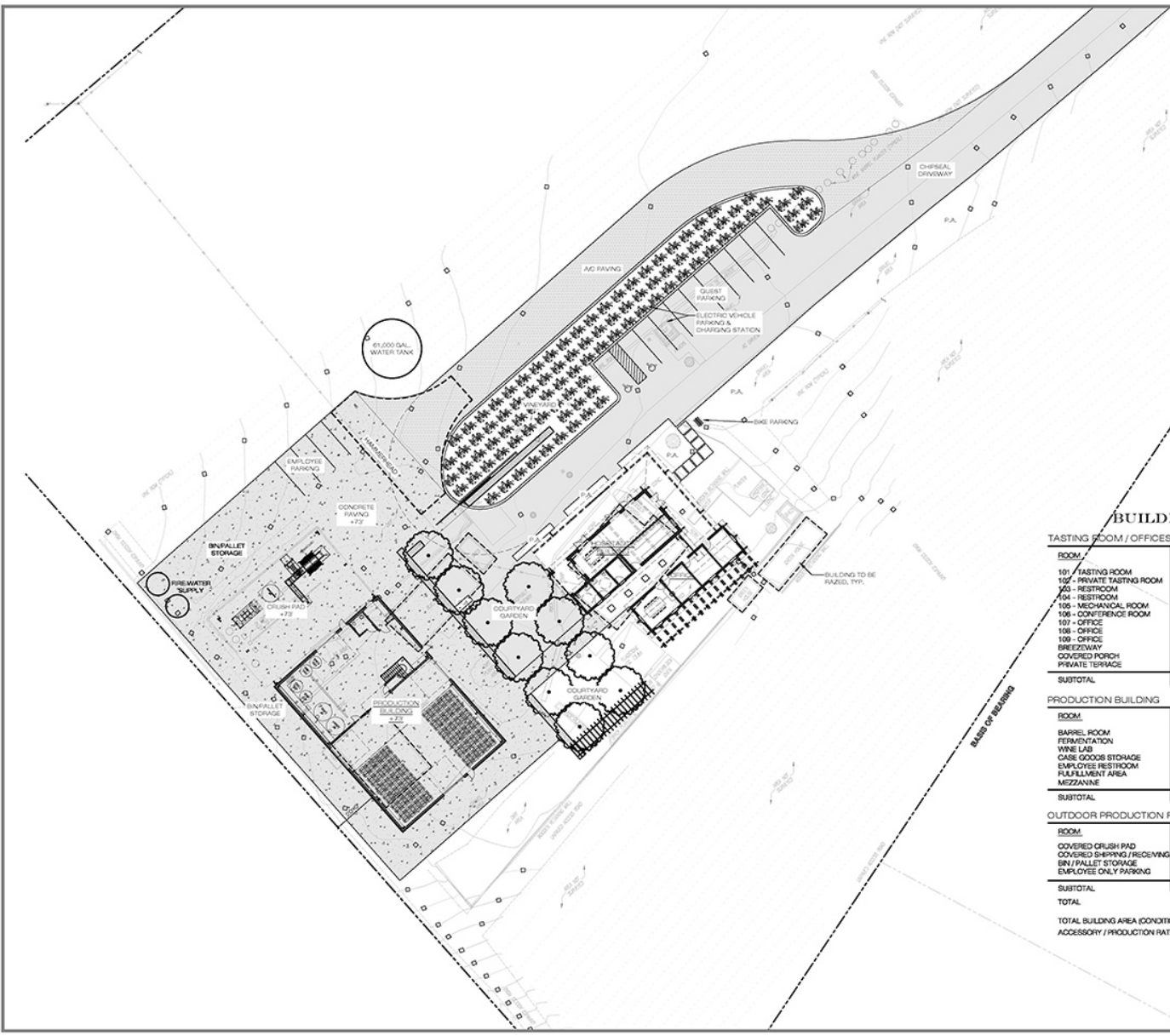
SHEET CONTENTS
 EXISTING SITE PLAN

DRAWN BY	MON
CHECKED BY	JBJ
JOB NO.	-
SHEET NO.	-





THIS DOCUMENT AND THE IDEAS INCORPORATED HEREIN, AS AN INSTRUMENT OF PROFESSIONAL SERVICE, IS THE PROPERTY OF ARCHITECT JAMES JEFFERY AND IS NOT TO BE USED IN WHOLE OR IN PART FOR ANY PROJECT WITHOUT THE PROWRITTEN AUTHORIZATION OF ARCHITECT JAMES JEFFERY CONSULTANTS



BUILDING DATA

TASTING ROOM / OFFICES

ROOM	ACCESSORY (S.F.)	PRODUCTION (S.F.)	OTHER
101 - TASTING ROOM	618		
102 - PRIVATE TASTING ROOM	215		
103 - RESTROOM	84		
104 - RESTROOM	84		
105 - MECHANICAL ROOM	75		
106 - CONFERENCE ROOM	226		
107 - OFFICE	107		
108 - OFFICE	107		
109 - OFFICE	107		
BREEZEWAY			977
COVERED PORCH			1,204
PRIVATE TERRACE			135
SUBTOTAL	1,773		1,916

PRODUCTION BUILDING

ROOM	ACCESSORY (S.F.)	PRODUCTION (S.F.)	OTHER
BARREL ROOM		2,884	
FERMENTATION		1,282	
WINE LAB		103	
CASE GOODS STORAGE		320	
EMPLOYEE RESTROOM		96	
FULFILLMENT AREA		190	
MEZZANINE		917	
SUBTOTAL		5,807	

OUTDOOR PRODUCTION FACILITIES

ROOM	ACCESSORY (S.F.)	PRODUCTION (S.F.)	OTHER
COVERED CRUSH PAD		2673	
COVERED SHIPPING / RECEIVING		1133	
BN / PALLET STORAGE		4473	
EMPLOYEE ONLY PARKING		539	
SUBTOTAL		8,818	

TOTAL BUILDING AREA (CONDITIONED SPACE): 7,580
 ACCESSORY / PRODUCTION RATIO (1,773/14,625) 12.12%

SCALE: DATE:

USE PERMIT MODIFICATION: 0-9-2015

PLANNING RESPONSE: 0-22-2015

PROJECT:

BEAU VIGNE
ESTATE WINERY

4057 SILVERADO TR.
 NAPA, CA 94558

SHEET CONTENTS:

PROPOSED
SITE PLAN

DRAWN BY: MDN

CHECKED BY: JJJ

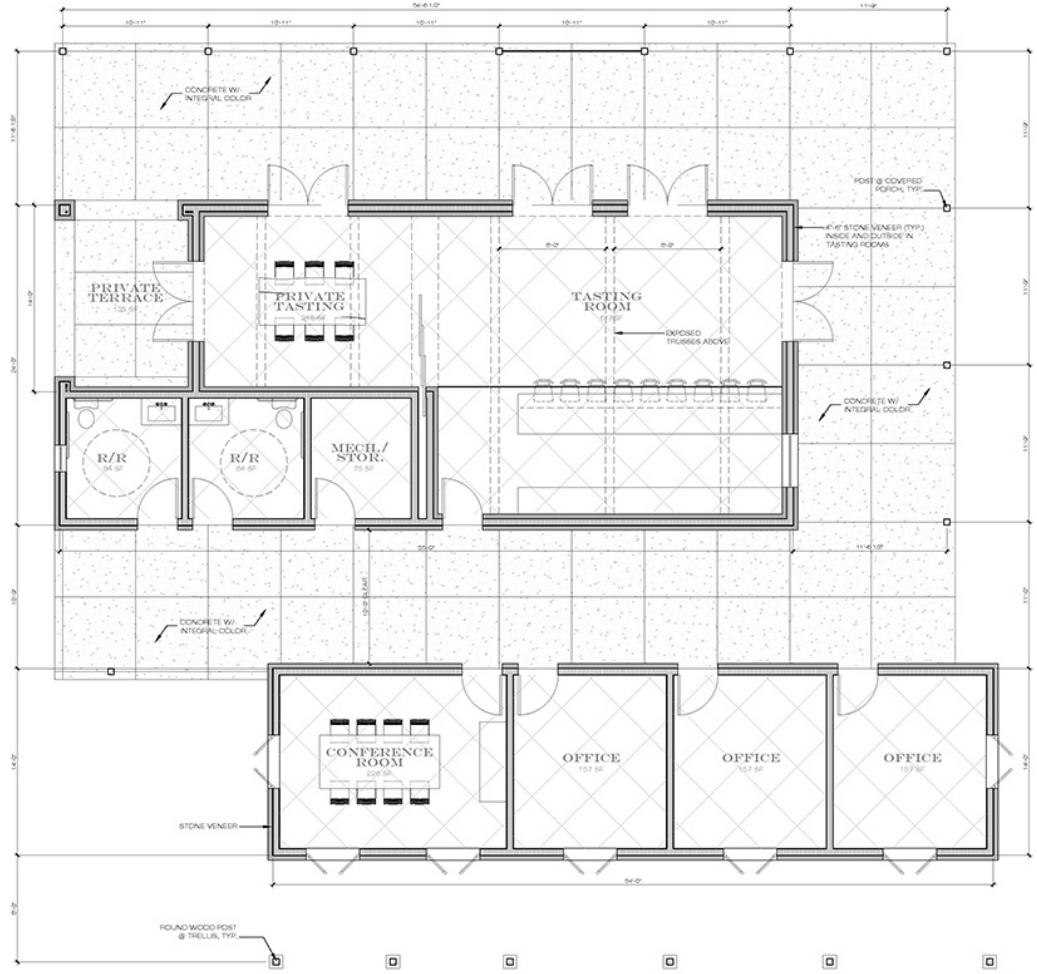
JOB NO.:

SHEET NO.





THIS DOCUMENT AND THE IDEAS INCORPORATED HEREIN, AS AN INSTRUMENT OF PROFESSIONAL SERVICE, IS THE PROPERTY OF ARCHITECT JAMES JEFFERY AND IS NOT TO BE REPRODUCED OR IN ANY PART FOR ANY PROJECT WITHOUT THE PRIOR WRITTEN AUTHORIZATION OF ARCHITECT JAMES JEFFERY CONSULTANTS



ACCESSORY AREA = 1,773 SF



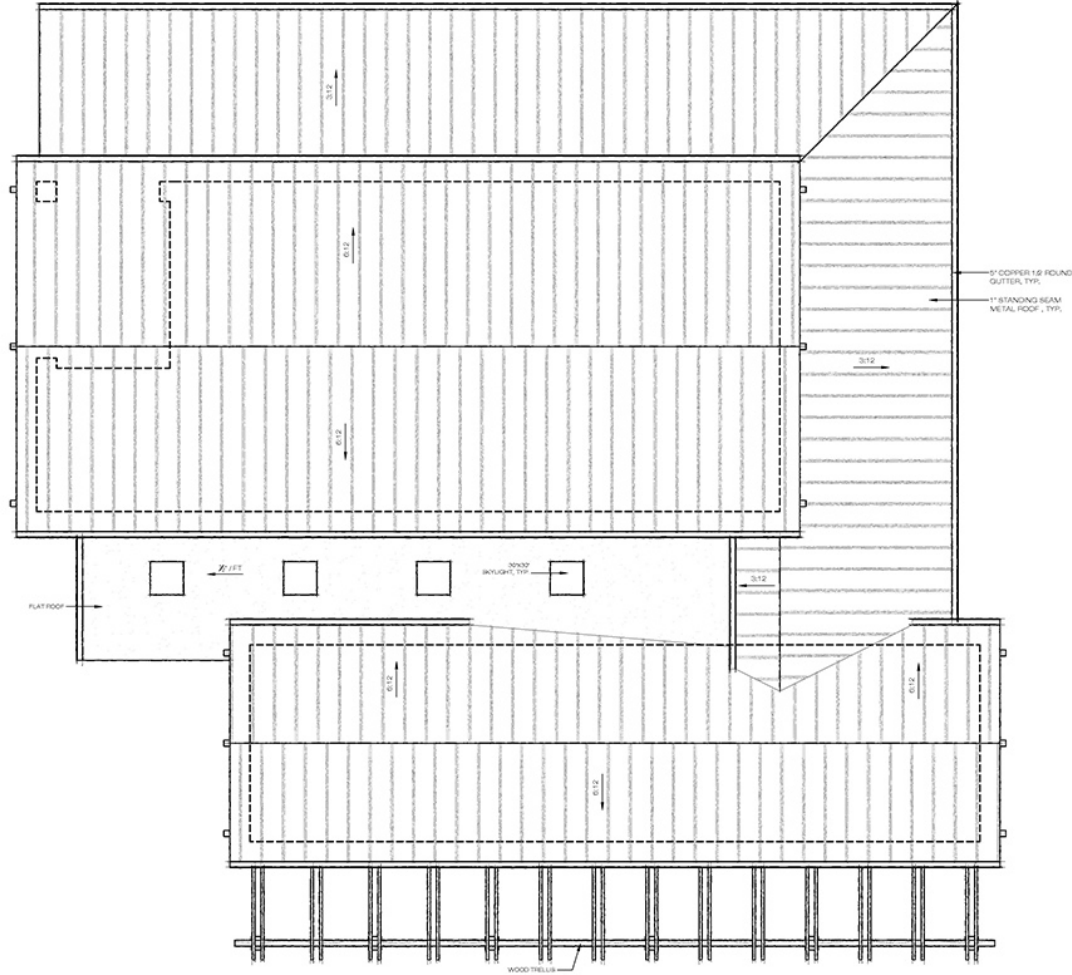
ISSUE	DATE
USE PERMIT MODIFICATION	6-8-2015
PLANNING RESPONSE	9-22-2015

PROJECT
BEAU VIGNE
ESTATE WINERY
 4057 SILVERADO TR.
 NAPA, CA 94558

SHEET CONTENTS
HOSPITALITY-OFFICE
BUILDING
FLOOR PLAN

DRAWN BY	MON
CHECKED BY	JJU
JOB NO.	-
SHEET NO.	-

A2.1



THIS DOCUMENT AND THE IDEAS INCORPORATED
 HEREIN, AS AN INSTRUMENT OF PROFESSIONAL
 SERVICE IS THE PROPERTY OF ARCHITECT JAMES
 JEFFERY AND IS NOT TO BE USED IN WHOLE OR IN
 PART FOR ANY PROJECT WITHOUT THE PRIOR WRITTEN
 AUTHORIZATION OF ARCHITECT JAMES JEFFERY
 CONSULTANTS

ISSUE	DATE
USE PERMIT MODIFICATION	6-8-2015
PLANNING RESPONSE	9-22-2015

PROJECT
BEAU VIGNE
ESTATE WINERY
 4057 SILVERADO TR.
 NAPA, CA 94558

BRIEF CONTENTS
 HOSPITALITY-OFFICE
 BUILDING
 ROOF PLAN

DRAWN BY	MON
CHECKED BY	JBJ
JOB NO.	-
SHEET NO.	-



A2.3

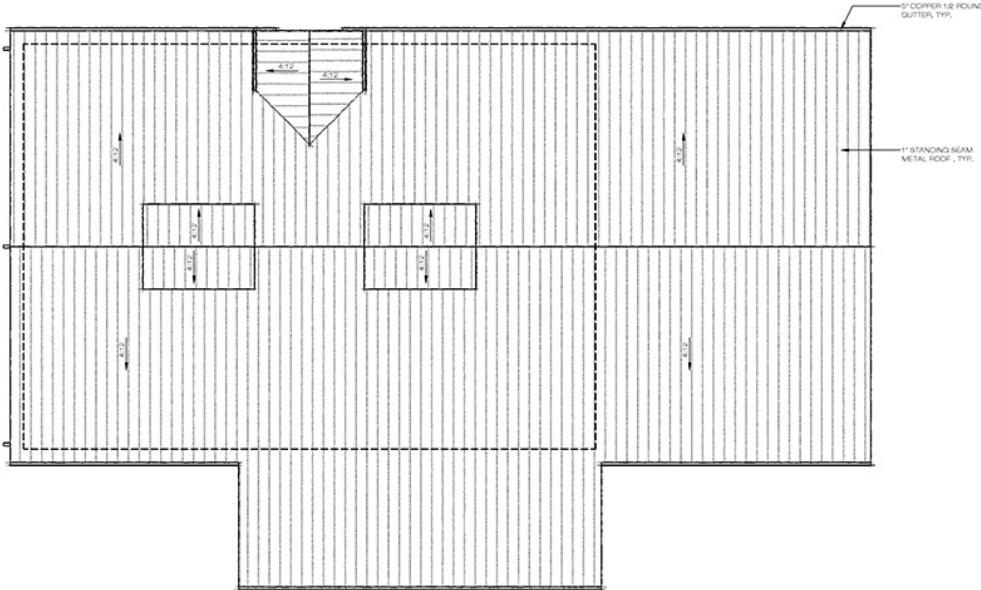


JAMES JEFFERY
ARCHITECTS-AIA-INC
ARCHITECTURAL
PLANNING & DESIGN

NAPA, CALIFORNIA 94550
2107 JEFFERSON STREET
PH (707) 258-1041 FAX (707) 258-1590



THIS DOCUMENT AND THE IDEAS INCORPORATED
HEREIN, AS AN INSTRUMENT OF PROFESSIONAL
SERVICE IS THE PROPERTY OF ARCHITECT JAMES
JEFFERY AND IS NOT TO BE USED IN WHOLE OR IN
PART FOR ANY PROJECT WITHOUT THE PRIOR WRITTEN
AUTHORIZATION OF ARCHITECT JAMES JEFFERY
CONSULTANTS



ISSUE	DATE
USE PERMIT MODIFICATION	9-9-2015
PLANNING RESPONSE	9-22-2015

PROJECT
BEAU VIGNE
ESTATE WINERY
4057 SILVERADO TR.
NAPA, CA 94558

SHEET CONTENTS
PRODUCTION
BUILDING
ROOF PLAN

DRAWN BY	MON
CHECKED BY	JAJ
JOB NO.	-
SHEET NO.	-



A2.4

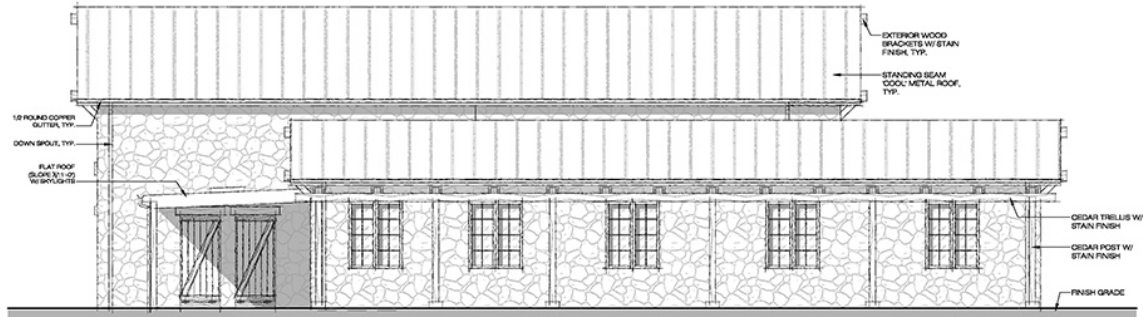


JAMES JEFFERY
ARCHITECTS-AIA-INC
 ARCHITECTURAL
 PLANNING & DESIGN

NAPA, CALIFORNIA 94550
 2157 JEFFERSON STREET
 PH (707) 226-1041 FAX (707) 226-1590



THIS DOCUMENT AND THE IDEAS INCORPORATED
 HEREIN, AS AN INSTRUMENT OF PROFESSIONAL
 SERVICE IS THE PROPERTY OF ARCHITECT JAMES
 JEFFERY AND IS NOT TO BE USED IN WHOLE OR IN
 PART FOR ANY PROJECT WITHOUT THE PROWRITTEN
 AUTHORIZATION OF ARCHITECT JAMES JEFFERY
 CONSULTANTS



SOUTH ELEVATION



NORTH ELEVATION

ISSUE DATE

USE PERMIT MODIFICATION 0-0-2015

PLANNING RESPONSE 0-02-2015

PROJECT

BEAU VIGNE
ESTATE WINERY

4057 SILVERADO TR.
 NAPA, CA 94558

SHEET CONTENTS

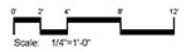
HOSPITALITY-OFFICE
BUILDING
EXT. ELEVATIONS

DRAWN BY **MON**

CHECKED BY **JBJ**

JOB NO. -

SHEET NO.



A3.1

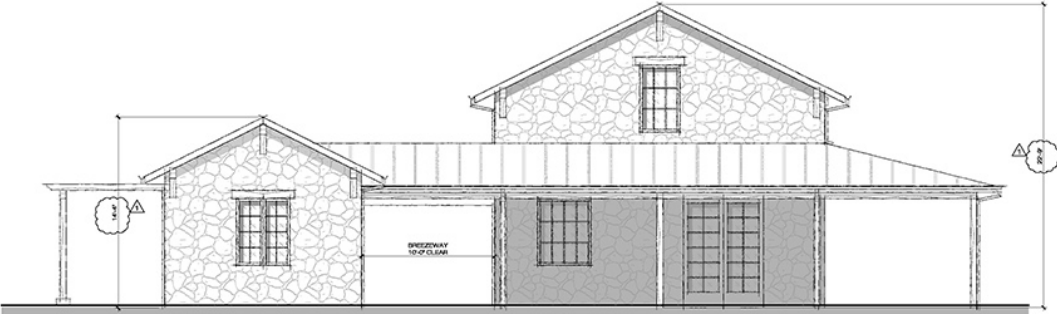


JAMES JEFFERY
ARCHITECTS-AIA-INC
ARCHITECTURAL
PLANNING & DESIGN

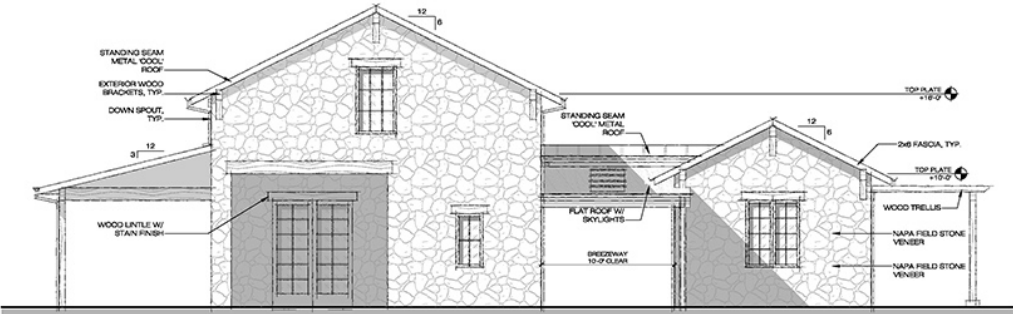
NAPA, CALIFORNIA 94550
2107 JEFFERSON STREET
PH (707) 256-1041 FAX (707) 256-1500



THIS DOCUMENT AND THE IDEAS INCORPORATED HEREIN, AS AN INSTRUMENT OF PROFESSIONAL SERVICE, IS THE PROPERTY OF ARCHITECT JAMES JEFFERY AND IS NOT TO BE USED IN WHOLE OR IN PART FOR ANY PROJECT WITHOUT THE PRIOR WRITTEN AUTHORIZATION OF ARCHITECT JAMES JEFFERY CONSULTANTS



EAST ELEVATION



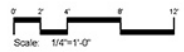
WEST ELEVATION

DATE	REVISION
9-9-2015	USE PERMIT MODIFICATION
9-22-2015	PLANNING RESPONSE

PROJECT
BEAU VIGNE
ESTATE WINERY
4057 SILVERADO TR.
NAPA, CA 94558

SHEET CONTENTS
HOSPITALITY-OFFICE
BUILDING
EXT. ELEVATIONS

DRAWN BY	MON
CHECKED BY	JBJ
JOB NO.	-
SHEET NO.	-



A3.2

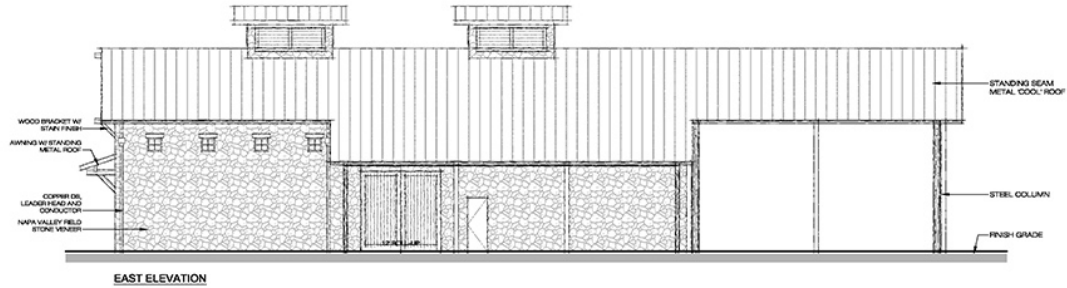


JAMES JEFFERY ARCHITECTS-AIA-INC
 ARCHITECTURAL PLANNING & DESIGN

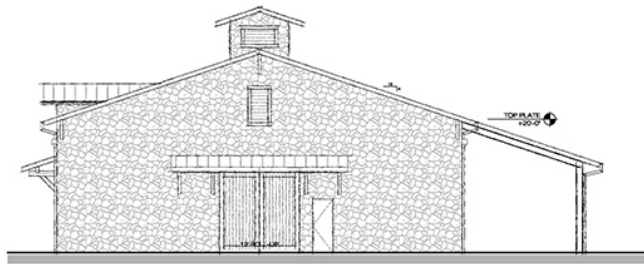
NAPA, CALIFORNIA 94550
 2157 JEFFERSON STREET
 PH (707) 258-1041 FAX (707) 258-1590



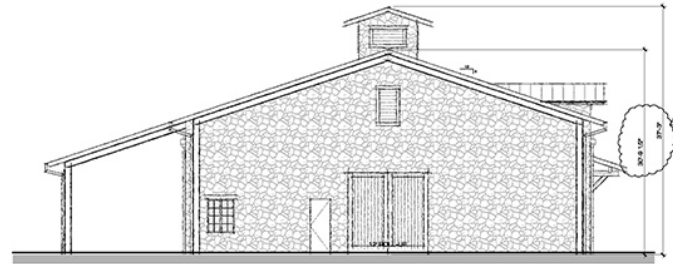
THIS DOCUMENT AND THE IDEAS INCORPORATED HEREIN, AS AN INSTRUMENT OF PROFESSIONAL SERVICE IS THE PROPERTY OF ARCHITECT JAMES JEFFERY AND IS NOT TO BE USED IN WHOLE OR IN PART FOR ANY PROJECT WITHOUT THE PRIOR WRITTEN AUTHORIZATION OF ARCHITECT JAMES JEFFERY CONSULTANTS



EAST ELEVATION



SOUTH ELEVATION



NORTH ELEVATION



WEST ELEVATION



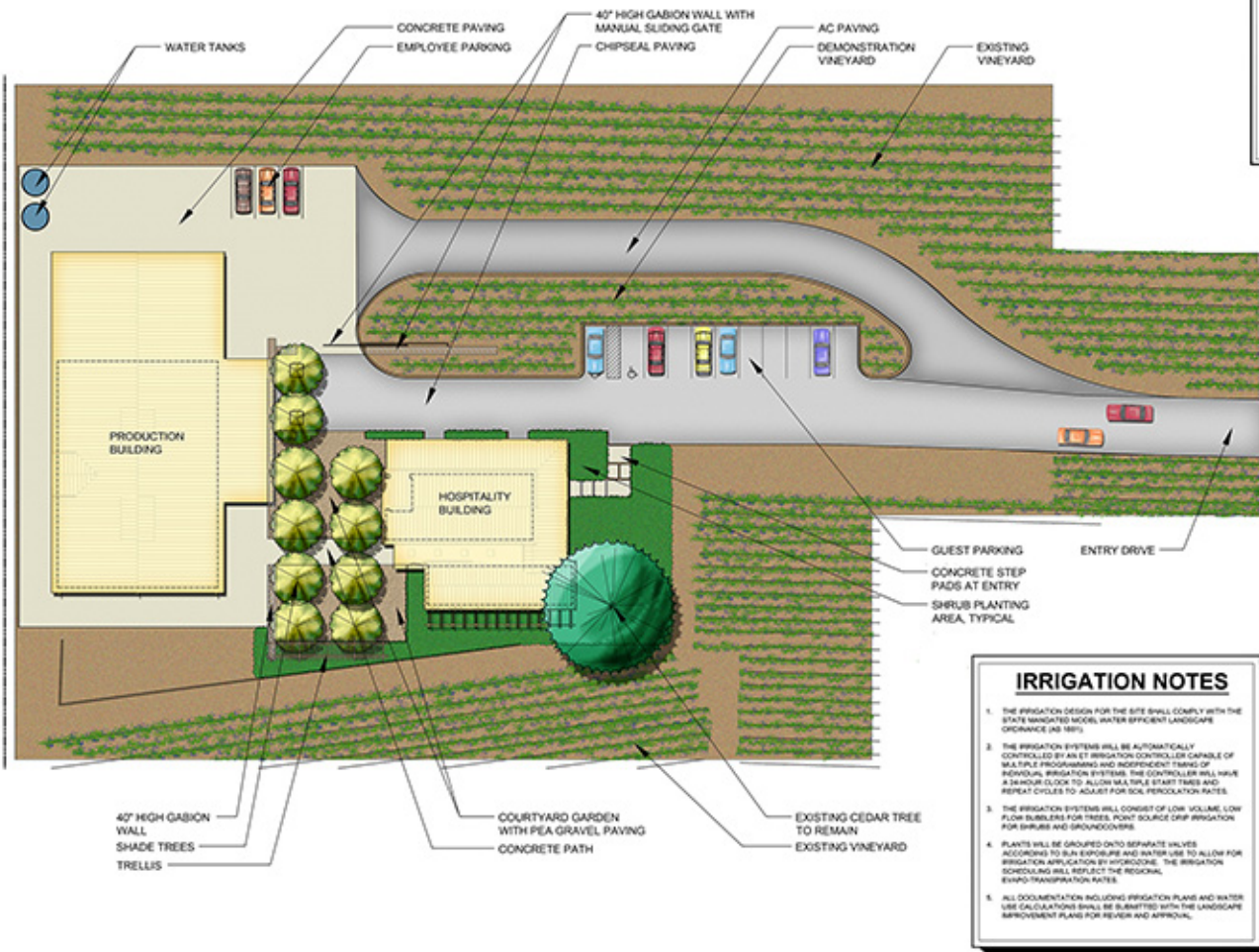
DATE	REVISION
0-9-2015	USE PERMIT MODIFICATION
9-22-2015	PLANNING RESPONSE

PROJECT
BEAU VIGNE ESTATE WINERY
 4057 SILVERADO TR.
 NAPA, CA 94558

SHEET CONTENTS
PRODUCTION BUILDING EXT. ELEVATIONS

DRAWN BY	MON
CHECKED BY	JAJ
JOB NO.	-
SHEET NO.	-

A3.3



WATER USE CALCULATIONS

MAXIMUM APPLIED WATER ALLOWANCE
 THE MAXIMUM APPLIED WATER ALLOWANCE (MAWA) IS CALLED FOR PER YEAR BASED ON THE FOLLOWING FORMULA:
 $MAWA = (ET_{L+M} \times 0.02) \times LA + (ET_{S+D} \times SA)$

ESTIMATED TOTAL WATER USE
 THE ESTIMATED TOTAL WATER USE (ETWU) IS THE SUM TOTAL OF ESTIMATED WATER USE FOR EACH HYDROZONE IN GALLONS PER YEAR AND IS BASED ON THE FOLLOWING FORMULA:
 $ETWU = (ET_{L+M} \times 0.02) \times LA + (ET_{S+D} \times SA) + ET_{I+R}$

ET_{L+M} = ANNUAL EVAPOTRANSPIRATION RATE (INCHES)
 ET_L = ET ADJUSTMENT FACTOR
 ET_M = TOTAL LANDSCAPE AREA (SQUARE FEET)
 ET_{S+D} = COMPARISON FACTOR (70 GALLONS/SQUARE FOOT)
 SA = SPECIAL LANDSCAPE AREA (SQUARE FEET)
 ET_{S+D} = ET ADJUSTMENT FACTOR FOR SA
ET_{I+R} = IRRIGATION EFFICIENCY

ET_L = 1.0
 LA = 4,500 SQUARE FEET
 SA = 19,500 SQUARE FEET
 MAWA = 4.50 + 195.00 = 199.50 GPM

ET_{L+M} = 0.20
 ET_{L+M} = 0.20 GPM = 0.20 INCHES
 ETWU = 110,250 + 190,250 = 300,500 GPM

HYDROZONE INFORMATION TABLE

HYDROZONE NUMBER	HYDROZONE NAME/USE	PLANT TYPE	HYDROZONE FACTOR	APPLIED AREA (SQ. FT.)	ADJUSTED AREA (SQ. FT.)
1	LOW BULK MODULATE TREE	SPRINKLER	0.5	4,500	2,250
2	WOODLARK TREE	SPRINKLER	0.5	19,500	9,750
TOTAL 4,950 SF					TOTAL 12,000 SF

PLANTING CONCEPT

THE PLANT PALETTE FOR THE BEAU VIGNE WINERY IS BASED LOGICALLY ON THE WESTERN MOUNTAIN CLIMATE. TREES, SHRUBS, PERENNIALS AND GRASSES ARE INDICATED BY SHADY (COMMERCIAL) OR BRIGHT (RESIDENTIAL) PALETTE. ONE EXISTING CEDAR TREE WILL BE PRESERVED ON THE BUILDING SITE. ORNAMENTAL PLANTINGS ARE INTRODUCED TO HIGH-LIGHT THE BUILDING ENTRANCE AND COURT. TREE SELECTIONS ARE LOCATED TO TAKE ADVANTAGE OF PASSIVE SOLAR BENEFITS IN THE COOL WINTER MONTHS AND PROVIDE SHADE DURING THE HOT SUMMER MONTHS.

PROPOSED PLANT PALETTE

BOTANICAL NAME	COMMON NAME	HEIGHT	WUCOLS
TREES			
PLANTING & ACQUISITION			
	LONDON PLANE TREE	30'	W
EXISTING TREES			
EXISTING CEDAR TREE TO REMAIN			
SPECIMEN SHRUBS			
GONIA PALMELLA 'SUNNY BELLY'	'SUNNY BELLY' AUSTRALIAN FUCHIA	L	W
CAERULEA CALIFORNICA 'TODDHOPE'	'TODDHOPE' BLUE HYDRANGEA	L	W
CEONIS 'CANTON'	'CANTON' BANGOR ROSEHEDGE	L	W
MYRTUS 'COMPTON'	'COMPTON' MYRTLE	L	W
PHILADELPHIA 'LEMON SWEET CREAM'	'LEMON SWEET CREAM' LIME BLOSSOM	L	W
ROSA 'SANTAPOLINA 'CLAREMONT'	'CLAREMONT' ROSE	L	W
SARACODIA 'HONEYBUNNIES'	'HONEYBUNNIES' SWEET WOODRUFF	L	W
VIBURNUM 'TIGER'	'TIGER' VIBURNUM	L	W
WYTHAMIA	'WYTHAMIA' WYTHAMIA	L	W
WESTRINGIA FRUTICOSA 'MORNING LIGHT'	'MORNING LIGHT' WESTRINGIA	L	W
PERENNIALS, GRASSES AND GROUNDCOVER			
CALIFORNIA MEADOW BLOSSOM	'CALIFORNIA MEADOW BLOSSOM'	W	W
INDIGO FERNS	'INDIGO FERNS'	L	W
BELETTED AND VARIETIES	'BELETTED AND VARIETIES'	L	W
BELETTED AND VARIETIES	'BELETTED AND VARIETIES'	L	W
'TODDHOPE' LAVENDER	'TODDHOPE' LAVENDER	L	W
'LEMON SWEET CREAM'	'LEMON SWEET CREAM'	L	W
'CLAREMONT' ROSE	'CLAREMONT' ROSE	L	W
'WYTHAMIA' WYTHAMIA	'WYTHAMIA' WYTHAMIA	L	W
'MORNING LIGHT' WESTRINGIA	'MORNING LIGHT' WESTRINGIA	L	W
'CLAREMONT' ROSE	'CLAREMONT' ROSE	L	W
'WYTHAMIA' WYTHAMIA	'WYTHAMIA' WYTHAMIA	L	W
'MORNING LIGHT' WESTRINGIA	'MORNING LIGHT' WESTRINGIA	L	W
'CLAREMONT' ROSE	'CLAREMONT' ROSE	L	W
'WYTHAMIA' WYTHAMIA	'WYTHAMIA' WYTHAMIA	L	W
'MORNING LIGHT' WESTRINGIA	'MORNING LIGHT' WESTRINGIA	L	W
'CLAREMONT' ROSE	'CLAREMONT' ROSE	L	W
'WYTHAMIA' WYTHAMIA	'WYTHAMIA' WYTHAMIA	L	W
'MORNING LIGHT' WESTRINGIA	'MORNING LIGHT' WESTRINGIA	L	W
'CLAREMONT' ROSE	'CLAREMONT' ROSE	L	W
'WYTHAMIA' WYTHAMIA	'WYTHAMIA' WYTHAMIA	L	W
'MORNING LIGHT' WESTRINGIA	'MORNING LIGHT' WESTRINGIA	L	W
'CLAREMONT' ROSE	'CLAREMONT' ROSE	L	W
'WYTHAMIA' WYTHAMIA	'WYTHAMIA' WYTHAMIA	L	W
'MORNING LIGHT' WESTRINGIA	'MORNING LIGHT' WESTRINGIA	L	W
'CLAREMONT' ROSE	'CLAREMONT' ROSE	L	W
'WYTHAMIA' WYTHAMIA	'WYTHAMIA' WYTHAMIA	L	W
'MORNING LIGHT' WESTRINGIA	'MORNING LIGHT' WESTRINGIA	L	W
'CLAREMONT' ROSE	'CLAREMONT' ROSE	L	W
'WYTHAMIA' WYTHAMIA	'WYTHAMIA' WYTHAMIA	L	W
'MORNING LIGHT' WESTRINGIA	'MORNING LIGHT' WESTRINGIA	L	W
'CLAREMONT' ROSE	'CLAREMONT' ROSE	L	W
'WYTHAMIA' WYTHAMIA	'WYTHAMIA' WYTHAMIA	L	W
'MORNING LIGHT' WESTRINGIA	'MORNING LIGHT' WESTRINGIA	L	W
'CLAREMONT' ROSE	'CLAREMONT' ROSE	L	W
'WYTHAMIA' WYTHAMIA	'WYTHAMIA' WYTHAMIA	L	W
'MORNING LIGHT' WESTRINGIA	'MORNING LIGHT' WESTRINGIA	L	W
'CLAREMONT' ROSE	'CLAREMONT' ROSE	L	W
'WYTHAMIA' WYTHAMIA	'WYTHAMIA' WYTHAMIA	L	W
'MORNING LIGHT' WESTRINGIA	'MORNING LIGHT' WESTRINGIA	L	W
'CLAREMONT' ROSE	'CLAREMONT' ROSE	L	W
'WYTHAMIA' WYTHAMIA	'WYTHAMIA' WYTHAMIA	L	W
'MORNING LIGHT' WESTRINGIA	'MORNING LIGHT' WESTRINGIA	L	W
'CLAREMONT' ROSE	'CLAREMONT' ROSE	L	W
'WYTHAMIA' WYTHAMIA	'WYTHAMIA' WYTHAMIA	L	W
'MORNING LIGHT' WESTRINGIA	'MORNING LIGHT' WESTRINGIA	L	W
'CLAREMONT' ROSE	'CLAREMONT' ROSE	L	W
'WYTHAMIA' WYTHAMIA	'WYTHAMIA' WYTHAMIA	L	W
'MORNING LIGHT' WESTRINGIA	'MORNING LIGHT' WESTRINGIA	L	W
'CLAREMONT' ROSE	'CLAREMONT' ROSE	L	W
'WYTHAMIA' WYTHAMIA	'WYTHAMIA' WYTHAMIA	L	W
'MORNING LIGHT' WESTRINGIA	'MORNING LIGHT' WESTRINGIA	L	W
'CLAREMONT' ROSE	'CLAREMONT' ROSE	L	W
'WYTHAMIA' WYTHAMIA	'WYTHAMIA' WYTHAMIA	L	W
'MORNING LIGHT' WESTRINGIA	'MORNING LIGHT' WESTRINGIA	L	W
'CLAREMONT' ROSE	'CLAREMONT' ROSE	L	W
'WYTHAMIA' WYTHAMIA	'WYTHAMIA' WYTHAMIA	L	W
'MORNING LIGHT' WESTRINGIA	'MORNING LIGHT' WESTRINGIA	L	W
'CLAREMONT' ROSE	'CLAREMONT' ROSE	L	W
'WYTHAMIA' WYTHAMIA	'WYTHAMIA' WYTHAMIA	L	W
'MORNING LIGHT' WESTRINGIA	'MORNING LIGHT' WESTRINGIA	L	W
'CLAREMONT' ROSE	'CLAREMONT' ROSE	L	W
'WYTHAMIA' WYTHAMIA	'WYTHAMIA' WYTHAMIA	L	W
'MORNING LIGHT' WESTRINGIA	'MORNING LIGHT' WESTRINGIA	L	W
'CLAREMONT' ROSE	'CLAREMONT' ROSE	L	W
'WYTHAMIA' WYTHAMIA	'WYTHAMIA' WYTHAMIA	L	W
'MORNING LIGHT' WESTRINGIA	'MORNING LIGHT' WESTRINGIA	L	W
'CLAREMONT' ROSE	'CLAREMONT' ROSE	L	W
'WYTHAMIA' WYTHAMIA	'WYTHAMIA' WYTHAMIA	L	W
'MORNING LIGHT' WESTRINGIA	'MORNING LIGHT' WESTRINGIA	L	W
'CLAREMONT' ROSE	'CLAREMONT' ROSE	L	W
'WYTHAMIA' WYTHAMIA	'WYTHAMIA' WYTHAMIA	L	W
'MORNING LIGHT' WESTRINGIA	'MORNING LIGHT' WESTRINGIA	L	W
'CLAREMONT' ROSE	'CLAREMONT' ROSE	L	W
'WYTHAMIA' WYTHAMIA	'WYTHAMIA' WYTHAMIA	L	W
'MORNING LIGHT' WESTRINGIA	'MORNING LIGHT' WESTRINGIA	L	W
'CLAREMONT' ROSE	'CLAREMONT' ROSE	L	W
'WYTHAMIA' WYTHAMIA	'WYTHAMIA' WYTHAMIA	L	W
'MORNING LIGHT' WESTRINGIA	'MORNING LIGHT' WESTRINGIA	L	W
'CLAREMONT' ROSE	'CLAREMONT' ROSE	L	W
'WYTHAMIA' WYTHAMIA	'WYTHAMIA' WYTHAMIA	L	W
'MORNING LIGHT' WESTRINGIA	'MORNING LIGHT' WESTRINGIA	L	W
'CLAREMONT' ROSE	'CLAREMONT' ROSE	L	W
'WYTHAMIA' WYTHAMIA	'WYTHAMIA' WYTHAMIA	L	W
'MORNING LIGHT' WESTRINGIA	'MORNING LIGHT' WESTRINGIA	L	W
'CLAREMONT' ROSE	'CLAREMONT' ROSE	L	W
'WYTHAMIA' WYTHAMIA	'WYTHAMIA' WYTHAMIA	L	W
'MORNING LIGHT' WESTRINGIA	'MORNING LIGHT' WESTRINGIA	L	W
'CLAREMONT' ROSE	'CLAREMONT' ROSE	L	W
'WYTHAMIA' WYTHAMIA	'WYTHAMIA' WYTHAMIA	L	W
'MORNING LIGHT' WESTRINGIA	'MORNING LIGHT' WESTRINGIA	L	W
'CLAREMONT' ROSE	'CLAREMONT' ROSE	L	W
'WYTHAMIA' WYTHAMIA	'WYTHAMIA' WYTHAMIA	L	W
'MORNING LIGHT' WESTRINGIA	'MORNING LIGHT' WESTRINGIA	L	W
'CLAREMONT' ROSE	'CLAREMONT' ROSE	L	W
'WYTHAMIA' WYTHAMIA	'WYTHAMIA' WYTHAMIA	L	W
'MORNING LIGHT' WESTRINGIA	'MORNING LIGHT' WESTRINGIA	L	W
'CLAREMONT' ROSE	'CLAREMONT' ROSE	L	W
'WYTHAMIA' WYTHAMIA	'WYTHAMIA' WYTHAMIA	L	W
'MORNING LIGHT' WESTRINGIA	'MORNING LIGHT' WESTRINGIA	L	W
'CLAREMONT' ROSE	'CLAREMONT' ROSE	L	W
'WYTHAMIA' WYTHAMIA	'WYTHAMIA' WYTHAMIA	L	W
'MORNING LIGHT' WESTRINGIA	'MORNING LIGHT' WESTRINGIA	L	W
'CLAREMONT' ROSE	'CLAREMONT' ROSE	L	W
'WYTHAMIA' WYTHAMIA	'WYTHAMIA' WYTHAMIA	L	W
'MORNING LIGHT' WESTRINGIA	'MORNING LIGHT' WESTRINGIA	L	W
'CLAREMONT' ROSE	'CLAREMONT' ROSE	L	W
'WYTHAMIA' WYTHAMIA	'WYTHAMIA' WYTHAMIA	L	W
'MORNING LIGHT' WESTRINGIA	'MORNING LIGHT' WESTRINGIA	L	W
'CLAREMONT' ROSE	'CLAREMONT' ROSE	L	W
'WYTHAMIA' WYTHAMIA	'WYTHAMIA' WYTHAMIA	L	W
'MORNING LIGHT' WESTRINGIA	'MORNING LIGHT' WESTRINGIA	L	W
'CLAREMONT' ROSE	'CLAREMONT' ROSE	L	W
'WYTHAMIA' WYTHAMIA	'WYTHAMIA' WYTHAMIA	L	W
'MORNING LIGHT' WESTRINGIA	'MORNING LIGHT' WESTRINGIA	L	W
'CLAREMONT' ROSE	'CLAREMONT' ROSE	L	W
'WYTHAMIA' WYTHAMIA	'WYTHAMIA' WYTHAMIA	L	W
'MORNING LIGHT' WESTRINGIA	'MORNING LIGHT' WESTRINGIA	L	W
'CLAREMONT' ROSE	'CLAREMONT' ROSE	L	W
'WYTHAMIA' WYTHAMIA	'WYTHAMIA' WYTHAMIA	L	W
'MORNING LIGHT' WESTRINGIA	'MORNING LIGHT' WESTRINGIA	L	W
'CLAREMONT' ROSE	'CLAREMONT' ROSE	L	W
'WYTHAMIA' WYTHAMIA	'WYTHAMIA' WYTHAMIA	L	W
'MORNING LIGHT' WESTRINGIA	'MORNING LIGHT' WESTRINGIA	L	W
'CLAREMONT' ROSE	'CLAREMONT' ROSE	L	W
'WYTHAMIA' WYTHAMIA	'WYTHAMIA' WYTHAMIA	L	W
'MORNING LIGHT' WESTRINGIA	'MORNING LIGHT' WESTRINGIA	L	W
'CLAREMONT' ROSE	'CLAREMONT' ROSE	L	W
'WYTHAMIA' WYTHAMIA	'WYTHAMIA' WYTHAMIA	L	W
'MORNING LIGHT' WESTRINGIA	'MORNING LIGHT' WESTRINGIA	L	W
'CLAREMONT' ROSE	'CLAREMONT' ROSE	L	W
'WYTHAMIA' WYTHAMIA	'WYTHAMIA' WYTHAMIA	L	W
'MORNING LIGHT' WESTRINGIA	'MORNING LIGHT' WESTRINGIA	L	W
'CLAREMONT' ROSE	'CLAREMONT' ROSE	L	W
'WYTHAMIA' WYTHAMIA	'WYTHAMIA' WYTHAMIA	L	W
'MORNING LIGHT' WESTRINGIA	'MORNING LIGHT' WESTRINGIA	L	W
'CLAREMONT' ROSE	'CLAREMONT' ROSE	L	W
'WYTHAMIA' WYTHAMIA	'WYTHAMIA' WYTHAMIA	L	W
'MORNING LIGHT' WESTRINGIA	'MORNING LIGHT' WESTRINGIA	L	W
'CLAREMONT' ROSE	'CLAREMONT' ROSE	L	W
'WYTHAMIA' WYTHAMIA	'WYTHAMIA' WYTHAMIA	L	W
'MORNING LIGHT' WESTRINGIA	'MORNING LIGHT' WESTRINGIA	L	W
'CLAREMONT' ROSE	'CLAREMONT' ROSE	L	W
'WYTHAMIA' WYTHAMIA	'WYTHAMIA' WYTHAMIA	L	W
'MORNING LIGHT' WESTRINGIA	'MORNING LIGHT' WESTRINGIA	L	W
'CLAREMONT' ROSE	'CLAREMONT' ROSE	L	W
'WYTHAMIA' WYTHAMIA	'WYTHAMIA' WYTHAMIA	L	W
'MORNING LIGHT' WESTRINGIA	'MORNING LIGHT' WESTRINGIA	L	W
'CLAREMONT' ROSE	'CLAREMONT' ROSE	L	W
'WYTHAMIA' WYTHAMIA	'WYTHAMIA' WYTHAMIA	L	W
'MORNING LIGHT' WESTRINGIA	'MORNING LIGHT' WESTRINGIA	L	W
'CLAREMONT' ROSE	'CLAREMONT' ROSE	L	W
'WYTHAMIA' WYTHAMIA	'WYTHAMIA' WYTHAMIA	L	W
'MORNING LIGHT' WESTRINGIA	'MORNING LIGHT' WESTRINGIA	L	W
'CLAREMONT' ROSE	'CLAREMONT' ROSE	L	W
'WYTHAMIA' WYTHAMIA	'WYTHAMIA' WYTHAMIA	L	W
'MORNING LIGHT' WESTRINGIA	'MORNING LIGHT' WESTRINGIA	L	W
'CLAREMONT' ROSE	'CLAREMONT' ROSE	L	W
'WYTHAMIA' WYTHAMIA	'WYTHAMIA' WYTHAMIA	L	W
'MORNING LIGHT' WESTRINGIA	'MORNING LIGHT' WESTRINGIA	L	W
'CLAREMONT' ROSE	'CLAREMONT' ROSE	L	W
'WYTHAMIA' WYTHAMIA	'WYTHAMIA' WYTHAMIA	L	W
'MORNING LIGHT' WESTRINGIA	'MORNING LIGHT' WESTRINGIA	L	W
'CLAREMONT' ROSE	'CLAREMONT' ROSE	L	W
'WYTHAMIA' WYTHAMIA	'WYTHAMIA' WYTHAMIA	L	W
'MORNING LIGHT' WESTRINGIA	'MORNING LIGHT' WESTRINGIA	L	W
'CLAREMONT' ROSE	'CLAREMONT' ROSE	L	W
'WYTHAMIA' WYTHAMIA	'WYTHAMIA' WYTHAMIA	L	W
'MORNING LIGHT' WESTRINGIA	'MORNING LIGHT' WESTRINGIA	L	W
'CLAREMONT' ROSE	'CLAREMONT' ROSE	L	W
'WYTHAMIA' WYTHAMIA	'WYTHAMIA' WYTHAMIA	L	W
'MORNING LIGHT' WESTRINGIA	'MORNING LIGHT' WESTRINGIA	L	W
'CLAREMONT' ROSE	'CLAREMONT' ROSE	L	W
'WYTHAMIA' WYTHAMIA	'WYTHAMIA' WYTHAMIA	L	W
'MORNING LIGHT' WESTRINGIA	'MORNING LIGHT' WESTRINGIA	L	W
'CLAREMONT' ROSE	'CLAREMONT' ROSE	L	W
'WYTHAMIA' WYTHAMIA	'WYTHAMIA' WYTHAMIA	L	W
'MORNING LIGHT' WESTRINGIA	'MORNING LIGHT' WESTRINGIA	L	W
'CLAREMONT' ROSE	'CLAREMONT' ROSE	L	W
'WYTHAMIA' WYTHAMIA	'WYTHAMIA' WYTHAMIA	L	W
'MORNING LIGHT' WESTRINGIA	'MORNING LIGHT' WESTRINGIA	L	W
'CLAREMONT' ROSE	'CLAREMONT' ROSE	L	W
'WYTHAMIA' WYTHAMIA	'WYTHAMIA' WYTHAMIA	L	W
'MORNING LIGHT' WESTRINGIA	'MORNING LIGHT' WESTRINGIA	L	W
'CLAREMONT' ROSE	'CLAREMONT' ROSE	L	W
'WYTHAMIA' WYTHAMIA	'WYTHAMIA' WYTHAMIA	L	W
'MORNING LIGHT' WESTRINGIA	'MORNING LIGHT' WESTRINGIA	L	W
'CLAREMONT' ROSE	'CLAREMONT' ROSE	L	W
'WYTHAMIA' WYTHAMIA	'WYTHAMIA' WYTHAMIA	L	W
'MORNING LIGHT' WESTRINGIA	'MORNING LIGHT' WESTRINGIA	L	W
'CLAREMONT' ROSE	'CLAREMONT' ROSE	L	W
'WYTHAMIA' WYTHAMIA	'WYTHAMIA' WYTHAMIA	L	W
'MORNING LIGHT' WESTRINGIA	'MORNING LIGHT' WESTRINGIA	L	W
'CLAREMONT' ROSE	'CLAREMONT' ROSE	L	W
'WYTHAMIA' WYTHAMIA	'WYTHAMIA' WYTHAMIA	L	W
'MORNING LIGHT' WESTRINGIA	'MORNING LIGHT' WESTRINGIA	L	W
'CLAREMONT' ROSE	'CLAREMONT' ROSE	L	W
'WYTHAMIA' WYTHAMIA	'WYTHAMIA' WYTHAMIA	L	W
'MORNING LIGHT' WESTRINGIA	'MORNING LIGHT' WESTRINGIA	L	W
'CLAREMONT' ROSE	'CLAREMONT' ROSE	L	W
'WYTHAMIA' WYTHAMIA	'WYTHAMIA' WYTHAMIA	L	W
'MORNING LIGHT' WESTRINGIA	'MORNING LIGHT' WESTRINGIA	L	W
'CLAREMONT' ROSE	'CLAREMONT' ROSE	L	W
'WYTHAMIA' WYTHAMIA	'WYTHAMIA' WYTHAMIA	L	W
'MORNING LIGHT' WESTRINGIA	'MORNING LIGHT' WESTRINGIA	L	W
'CLAREMONT' ROSE	'CLAREMONT' ROSE	L	W
'WYTHAMIA' WYTHAMIA	'WYTHAMIA' WYTHAMIA	L	W
'MORNING LIGHT' WESTRINGIA	'MORNING LIGHT' WESTRINGIA	L	W
'CLAREMONT' ROSE	'CLAREMONT' ROSE		