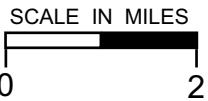
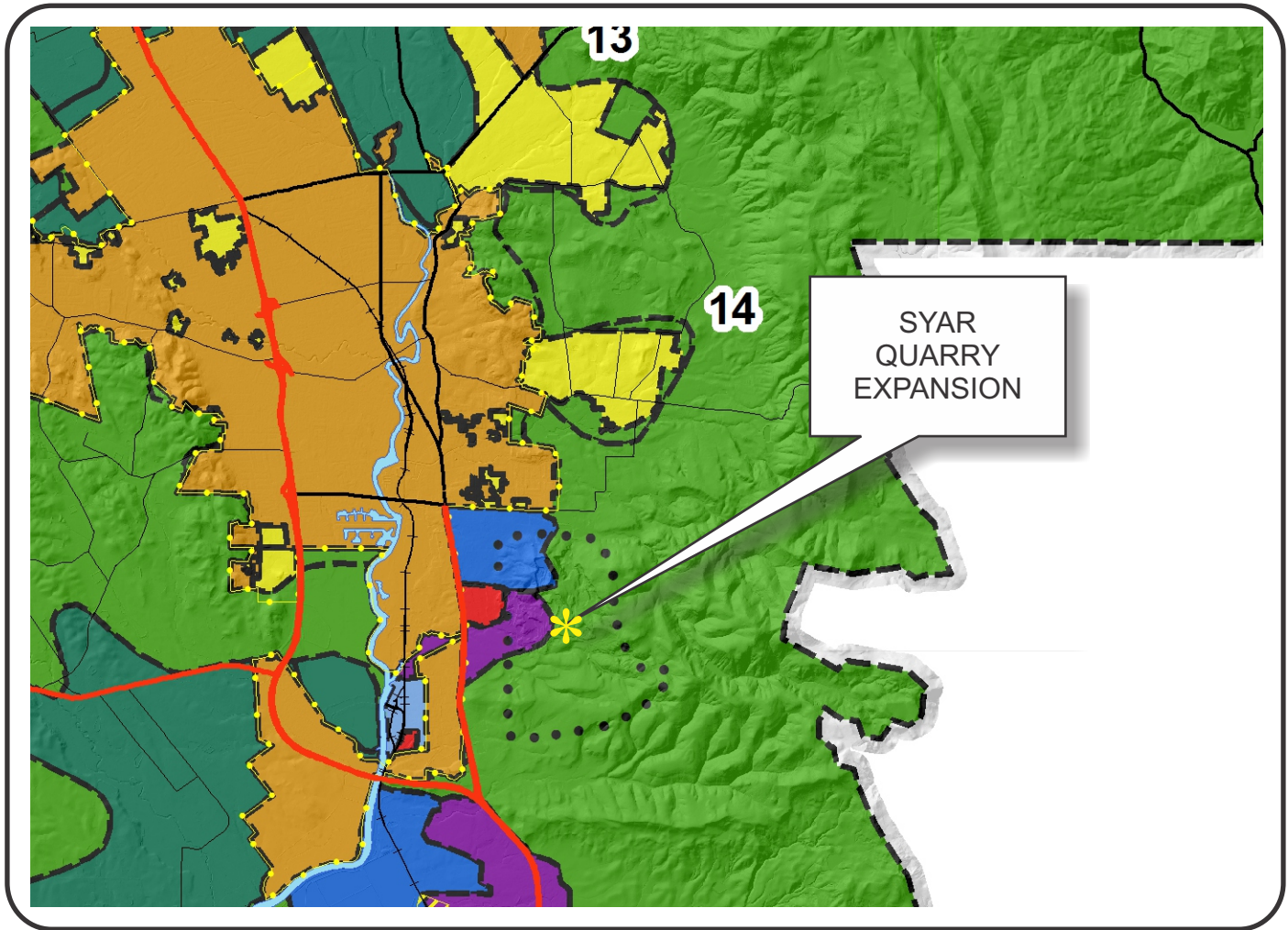


# NAPA COUNTY LAND USE PLAN 2008 - 2030



## LEGEND



### URBANIZED OR NON-AGRICULTURAL

- Study Area
- Cities
- Urban Residential\*
- Rural Residential\*
- Industrial
- Public-Institutional
- Napa Pipe Mixed Use

### OPEN SPACE

- Agriculture, Watershed & Open Space
- Agricultural Resource

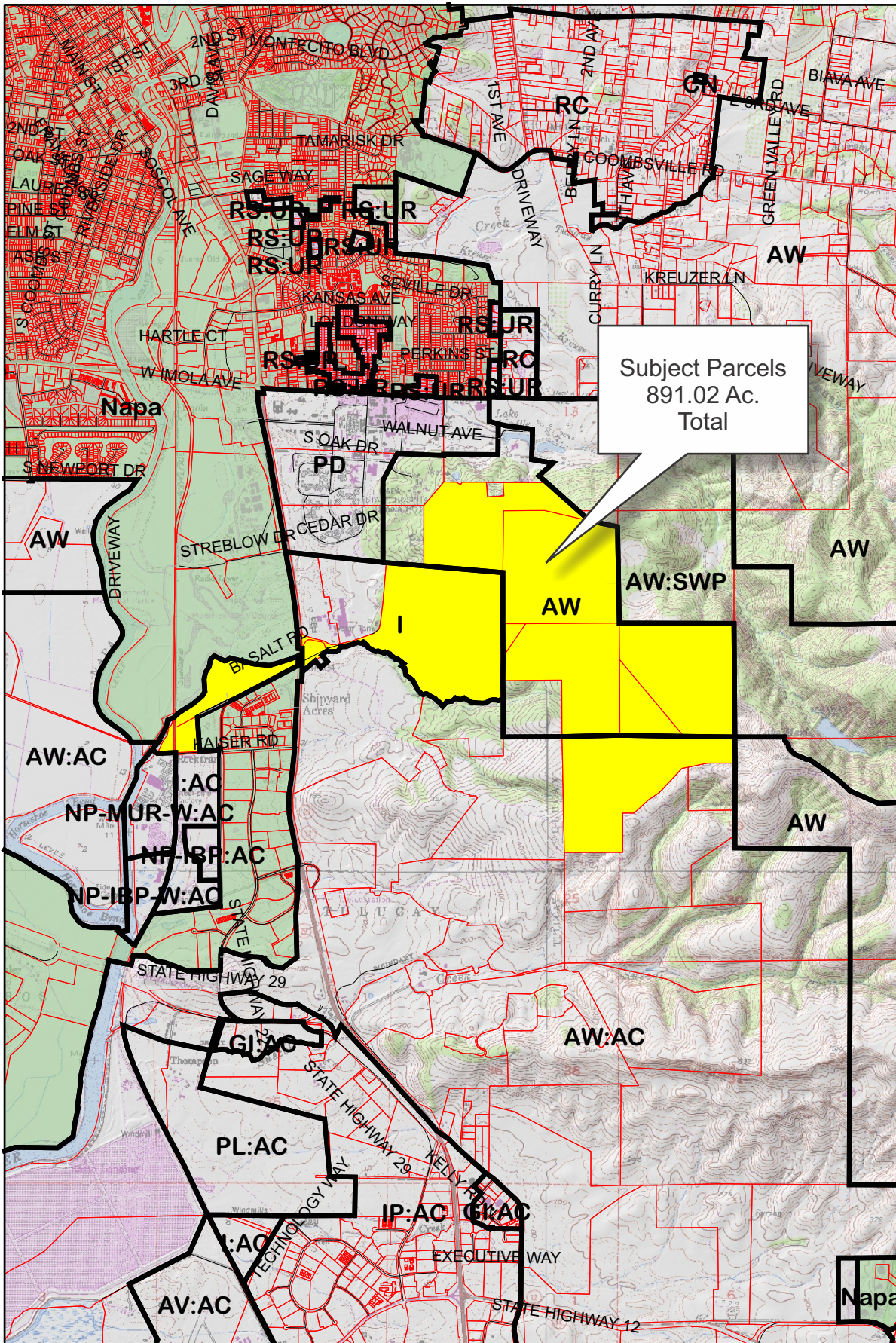
### TRANSPORTATION

- Mineral Resource
- Limited Access Highway
- Major Road
- American Canyon ULL
- City of Napa RUL
- Landfill - General Plan
- Secondary Road
- Airport
- Railroad
- Airport Clear Zone

\* See Action Item AG/LU-114.1 regarding agriculturally zoned areas within these land use designations

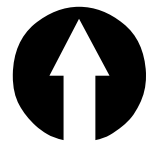
12-18-2014  
3C UP

# SYAR NAPA QUARRY EXPANSION



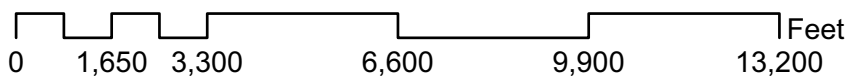
## Parcel List

- 045-360-005
- 046-370-001
- 046-370-002
- 046-370-003
- 046-370-012
- 046-370-013
- 046-370-015
- 046-370-022
- 046-370-025
- 046-390-002
- 046-390-003
- 046-450-071

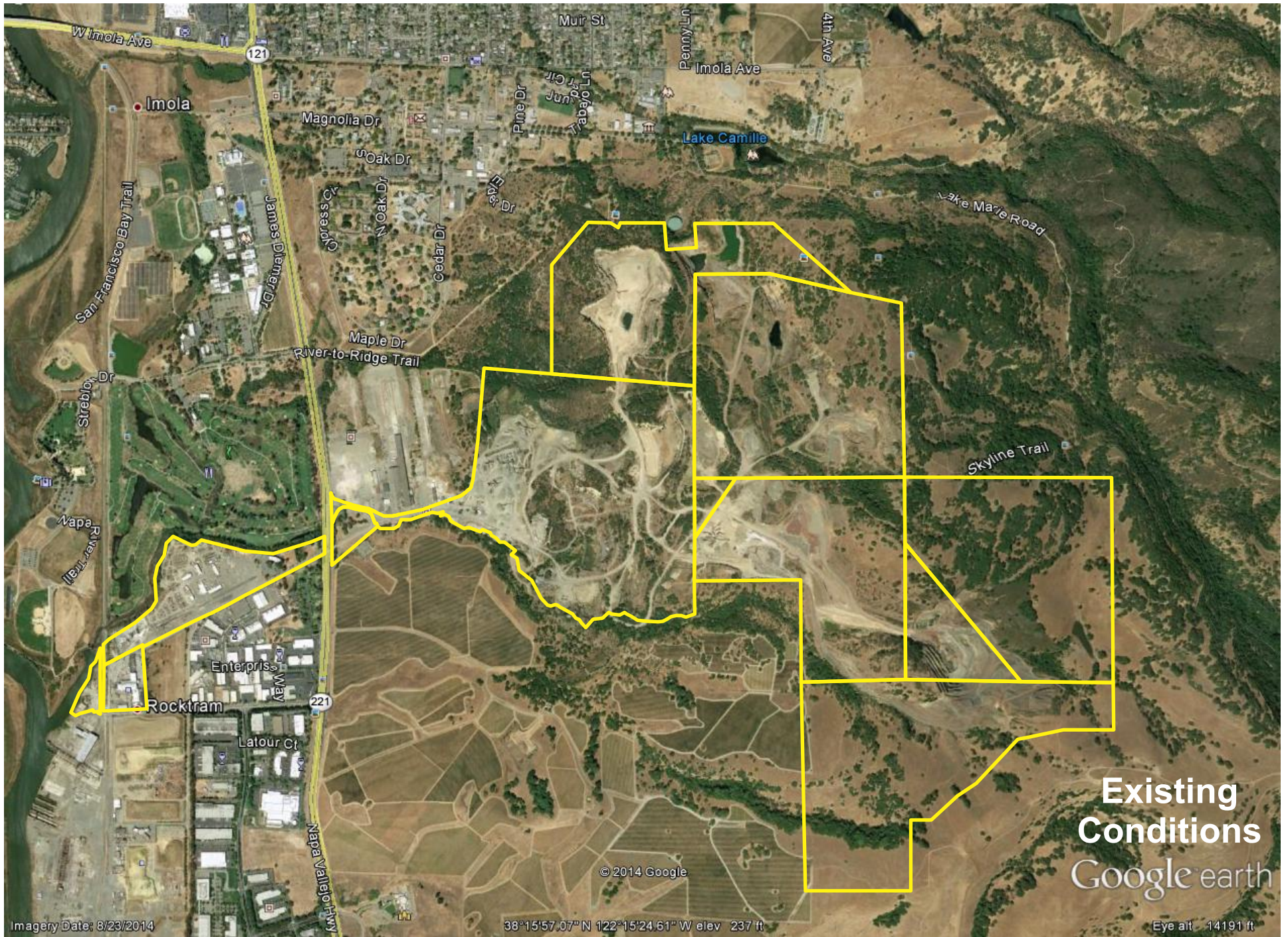


## Legend

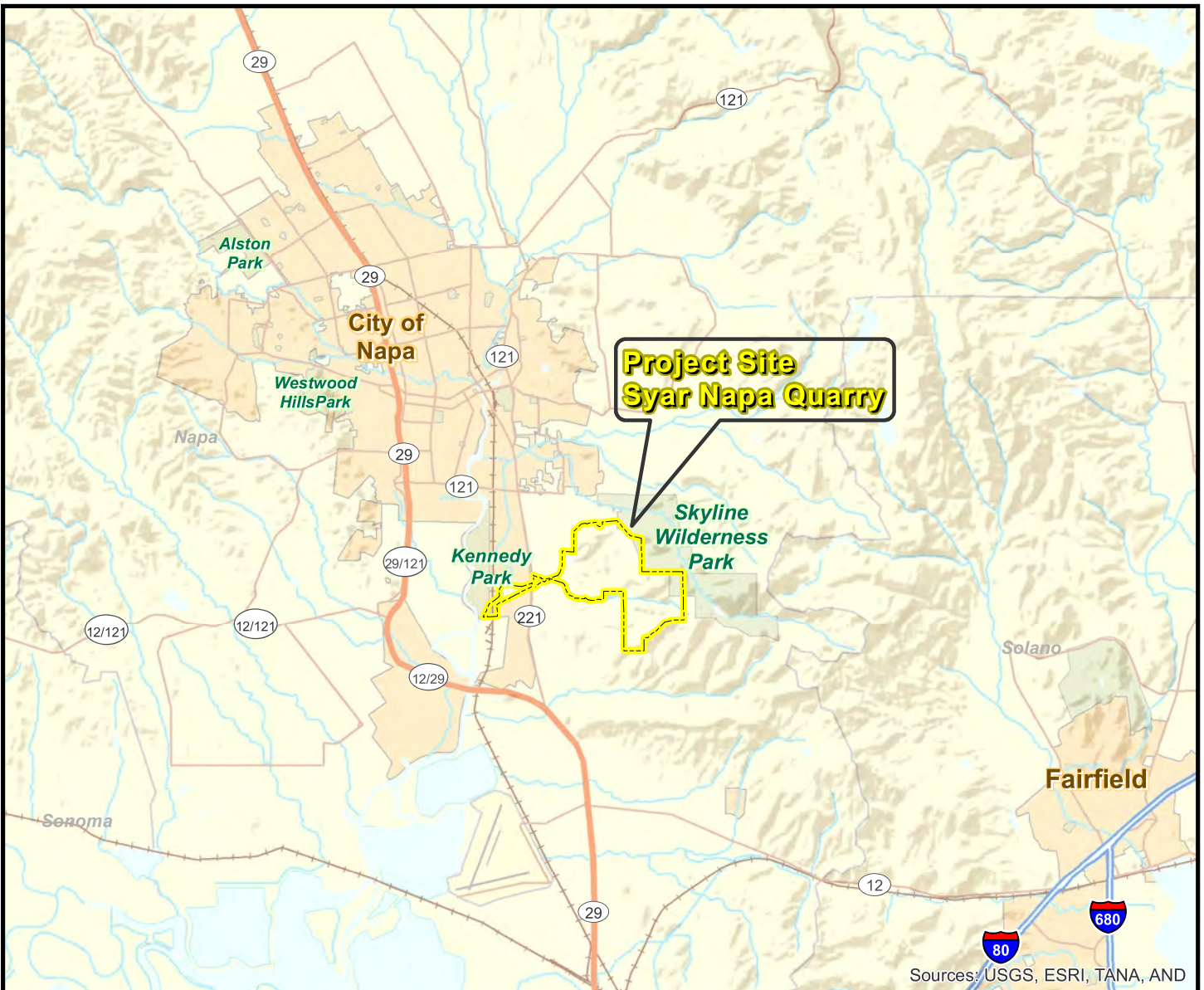
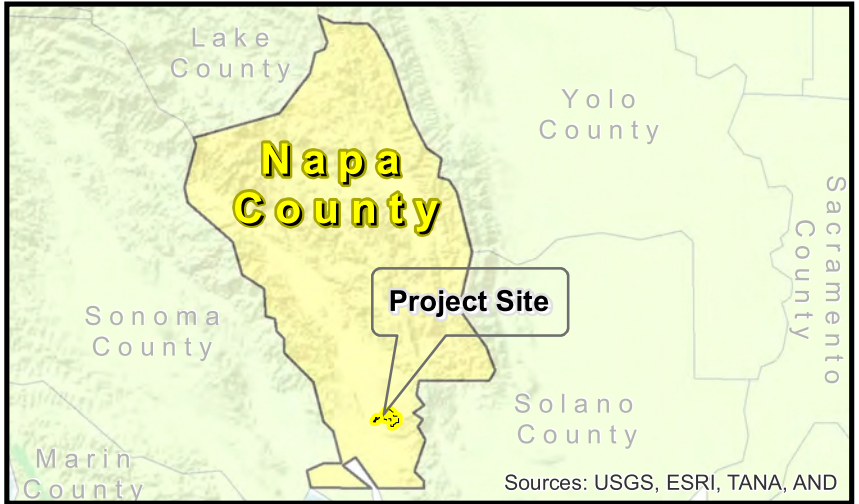
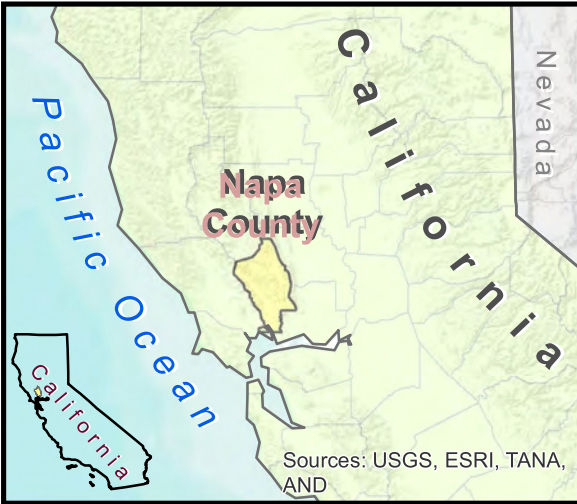
- Zoning
- Subject Parcels
- Parcels



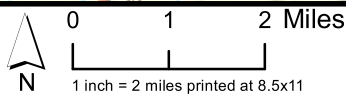
# SYAR NAPA QUARRY EXPANSION



# SYAR NAPA QUARRY EXPANSION



- Project Site
- Limited Access Highway
- Railroads
- Highway
- Rivers
- Major Road
- Parks
- Local Road
- City



Sources: ESRI Tele Atlas;  
Solano County GIS; City Boundaries.

**WINZLER & KELLY**  
www.w-and-k.com

**Figure 3-1  
Project Vicinity**

Draft EIR  
Syar Napa Quarry Expansion

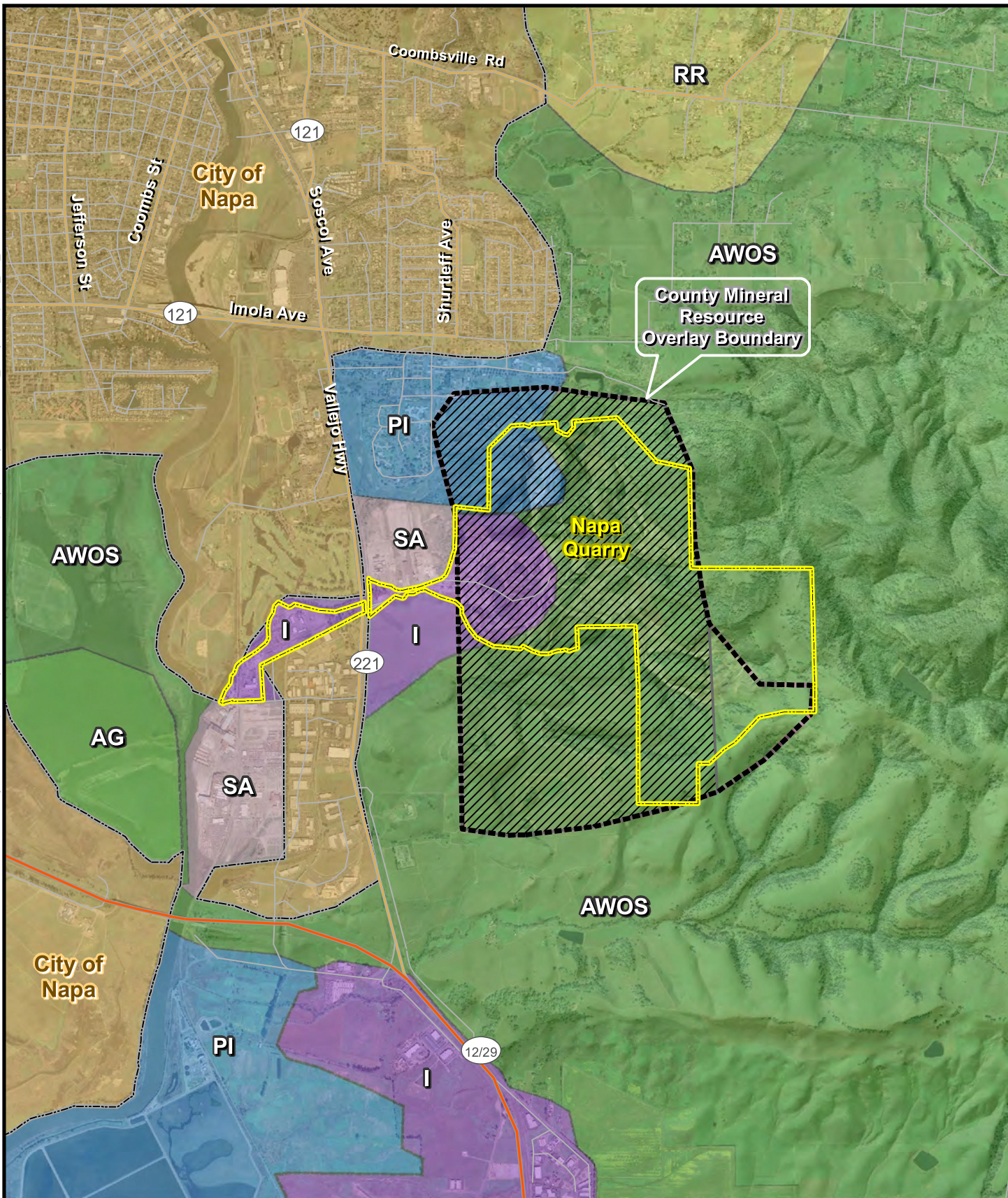
G:\2005 & Beyond\02304 NapaCountyPublicWorks\02304-09-001 Napa-SyarQuarry\EIR\GIS\2012\_Analysis\Maps\F3-1\_Vicinity.mxd - 4/24/2013 - 8:51:54 AM

Cartography: GLD

© Winzler & Kelly

# SYAR NAPA QUARRY EXPANSION

G:\2005 & Beyond\02304 NapaCountyPublicWorks\02304-09-001 Napa-SyarQuarryEIR\GIS\2012\_Analysis\Maps\F4\_9-1\_Landuse.mxd - 8/30/2012 - 4:56:22 PM



Project Site	State Designated Sector H Mineral Resource Zone - MRZ-2 (a)
<b>Land Use</b>	Industrial - I
County Mineral Resource Overlay	Public-Institution - PI
Agricultural Resources - AG	Rural Residential - RR
Agriculture, Watershed and Open Space - AWOS	Study Area - SA
Cities	Urban Residential - UR

0 1,500 3,000 ft

1 inch = 3,000 feet printed at 8.5x11

Sources: 2007 Napa County Orthophoto 1 meter resolution; Napa Co. GIS - Land Use; ESRI - streets

WINZLER & KELLY  
www.w-and-k.com

**Figure 4.9-1**

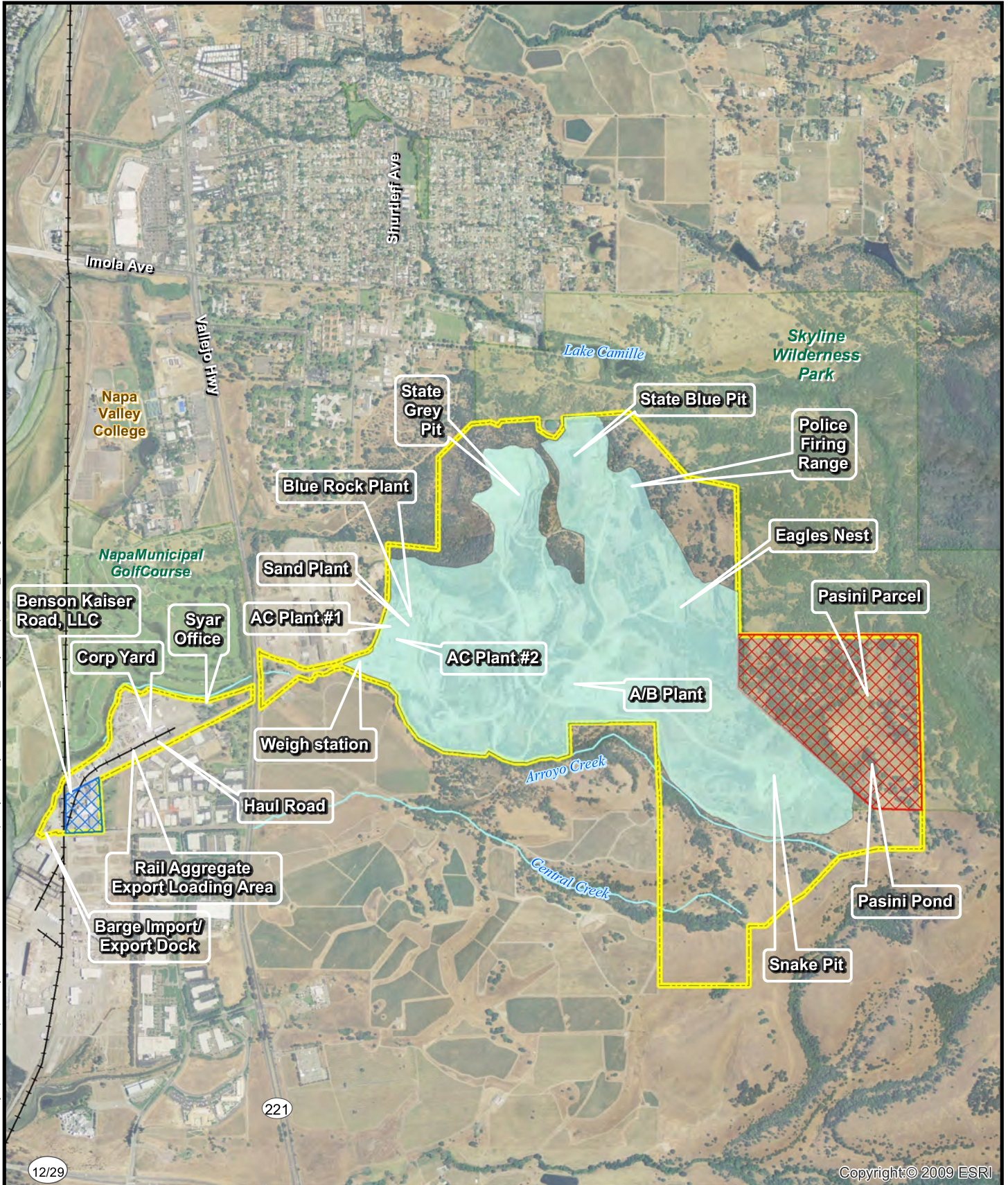
**Land Use and Mineral Resource Overlay Map**

Draft EIR  
Syar Napa Quarry Expansion

Cartography: GLD






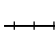

# SYAR NAPA QUARRY EXPANSION

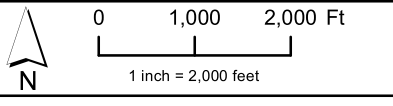
G:\12005 & Beyond\102304 NapaCountyPublicWorks\02304-09-001 Napa-SyarQuarryEIR\GIS\2012\_Analysis\Maps\F3-2\_ExistingConditions.mxd - 8/22/2013 - 9:57:06 AM



Copyright © 2009 ESRI

Cartography: GLD/AF

- |   |   |   |                      |
|---|---|---|----------------------|
|  | Project Site  |  | Parks/<br>Open Space |
|  | Pasini Parcel   |  | Creeks               |
|  | Benson Kaiser Road, LLC<br>(Pacific Coast Steel)          |  | Railroads            |
|  | Previously Approved Active<br>Quarry and Processing Areas |   |                      |



Sources: ESRI - tele atlas

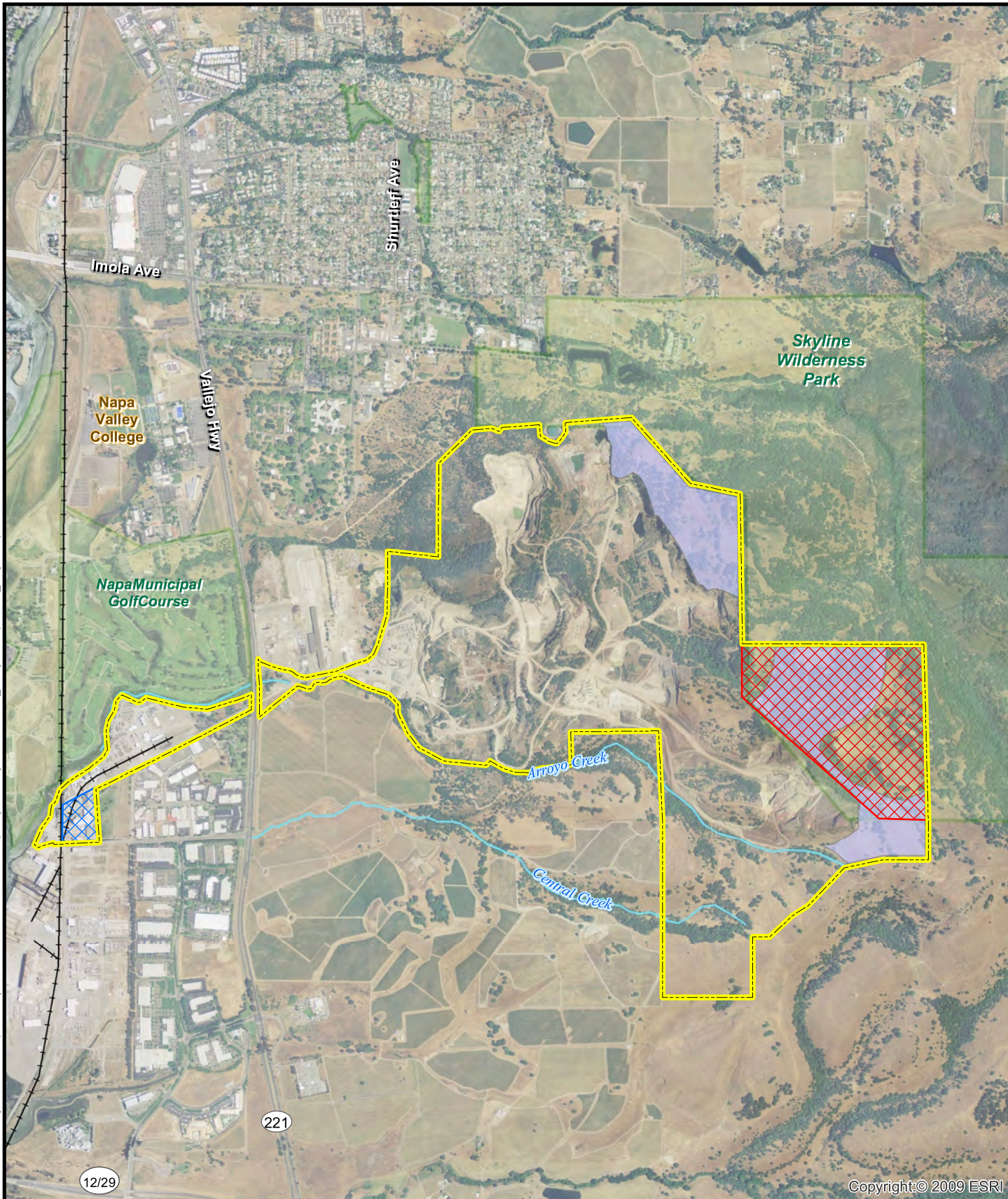
 **WINZLER & KELLY**  
www.w-and-k.com

**Figure 3-2  
Existing Conditions**

Draft EIR  
Syar Napa Quarry Expansion

# SYAR NAPA QUARRY EXPANSION

G:\2005 & Beyond\02304 NapaCountyPublicWorks\02304-09-001 Napa-SyarQuarryEIR\GIS\2012\_Analysis\Maps\F3-3\_ProjectExpansionAreas.mxd - 8/22/2013 - 10:42:23 AM

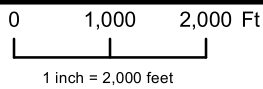


Copyright © 2009 ESRI

Cartography: GLD

- Project Site
- Pasini Parcel
- Benson Kaiser Road, LLC (Pacific Coast Steel)
- Expansion Areas
- Parks/Open Space

—+—+— Railroads



Sources: ESRI - tele atlas



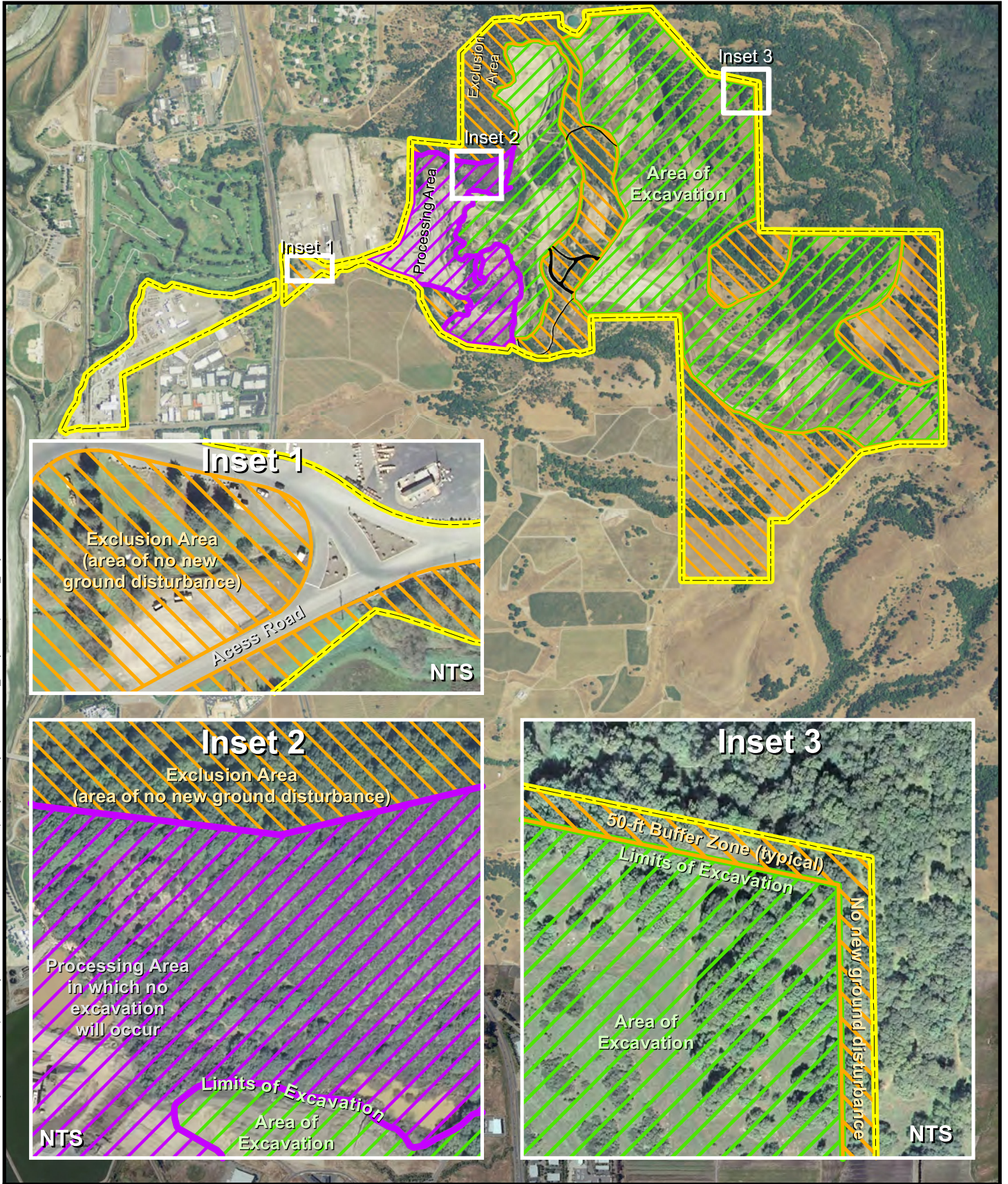
**WINZLER & KELLY**  
www.w-and-k.com

© Winzler & Kelly

**Figure 3-3**  
**Mining and Reclamation**  
**Expansion Areas**

Draft EIR  
Syar Napa Quarry Expansion

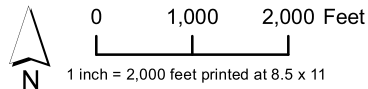
# SYAR NAPA QUARRY EXPANSION



G:\2005 & Beyond\02304 NapaCountyPublicWorks\02304-09-001 Napa-SyarQuarryEIR\GIS\2012\_Analysis\Maps\F3-4\_ProjectActivities.mxd - 7/29/2013 - 2:53:28 PM

Cartography: RCH/AF

- Project Site
- Exclusion Area and Buffer Zone (no new disturbance)
- Processing Area
- Excavation Limits
- Existing Roads (to be maintained)



Sources: ESRI - tele atlas



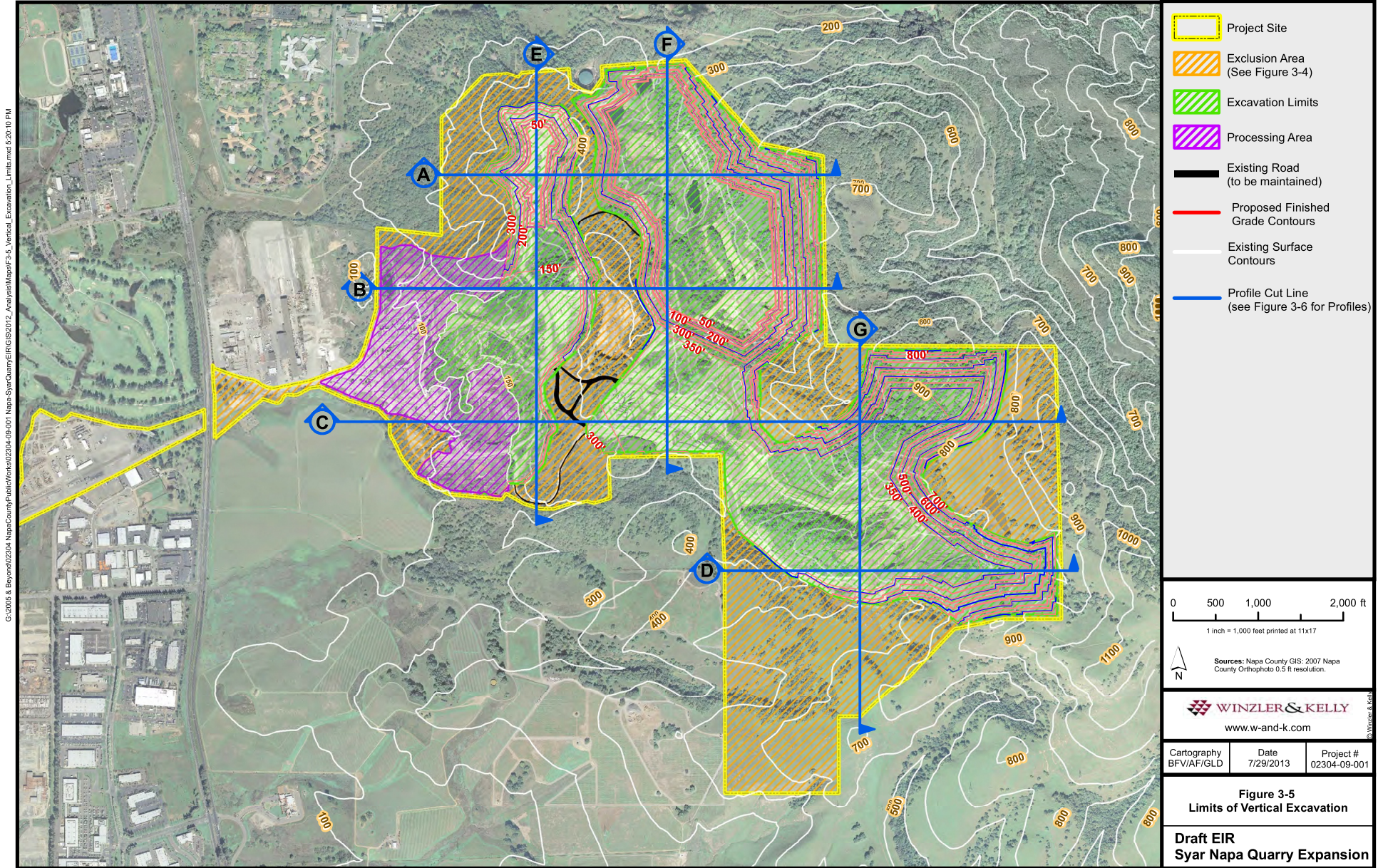
**Figure 3-4  
Project Activities/Areas**

Draft EIR  
Syar Napa Quarry Expansion

© Winzler & Kelly

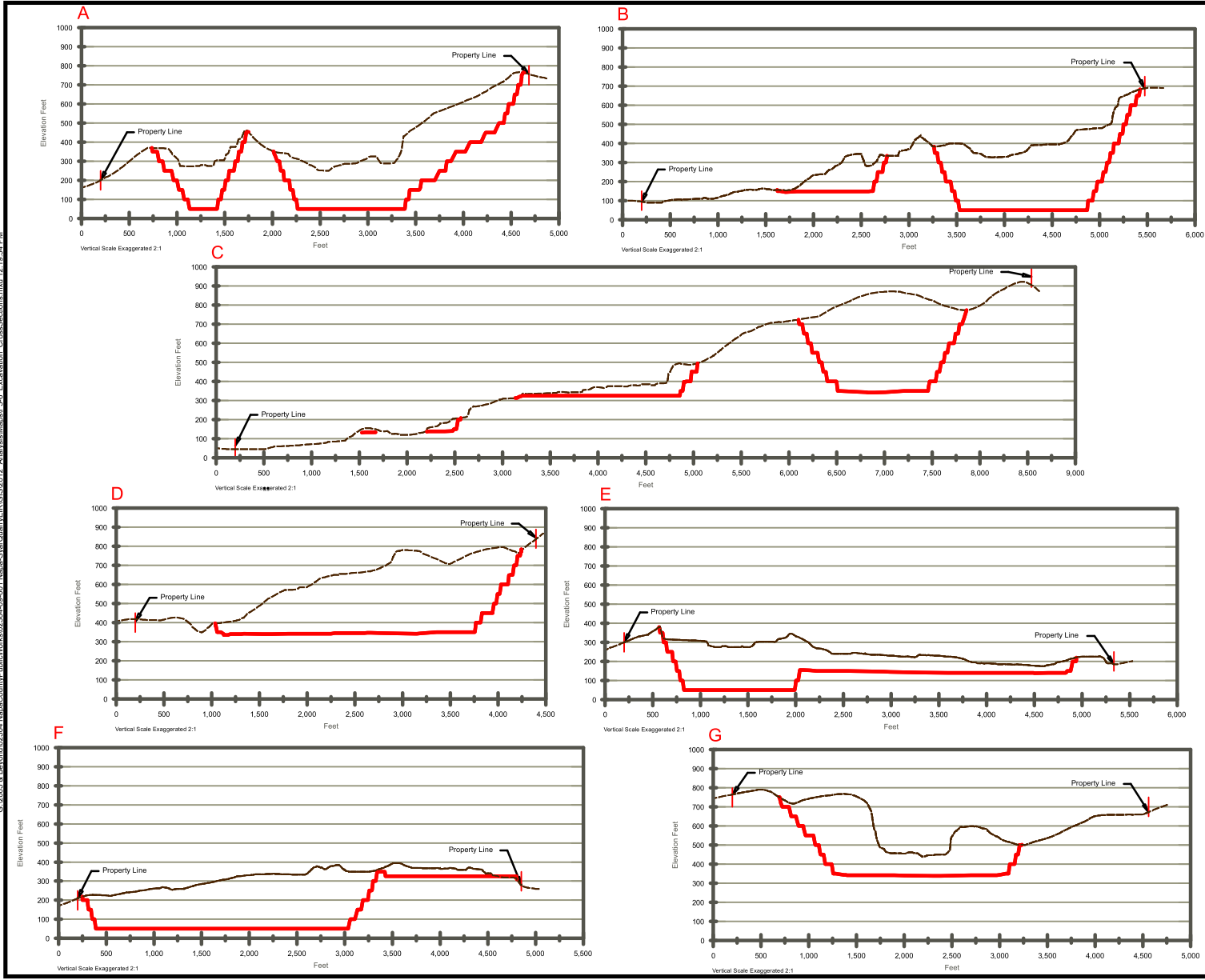


# SYAR NAPA QUARRY EXPANSION

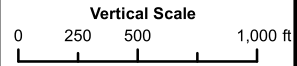
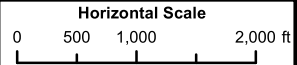


G:\2005 & Beyond\02304 Napa County Public\work\02304-09-001 Napa Syar Quarry EIR\02304-09-001\_Analysis\Map\F3-5\_Veritical\_Excavation\_Limits.mxd 5:20:10 PM

# SYAR NAPA QUARRY EXPANSION



----- Existing Ground  
 \_\_\_\_\_ Proposed Ground



**WINZLER & KELLY**  
 www.w-and-k.com

Cartography BFV/AF	Date 7/12/2012	Project # 02304-09-001
-----------------------	-------------------	---------------------------

**Figure 3-6**  
**Vertical Excavation Cross Sections**  
 (See Figure 3-5 for Locations)

**Draft EIR**  
**Syar Napa Quarry Expansion**

G:\2005 & Beyond\02304 Napa Quarry\Public\Works\02304-09-001 Napa-Syar Quarry\ER\GIS\2012 Analysis\Map\F3-6 Excavation\_CrossSection.mxd 12:18:34 PM

# SYAR NAPA QUARRY EXPANSION

## Skyline Wilderness Park and Napa Solano Ridge Trail

