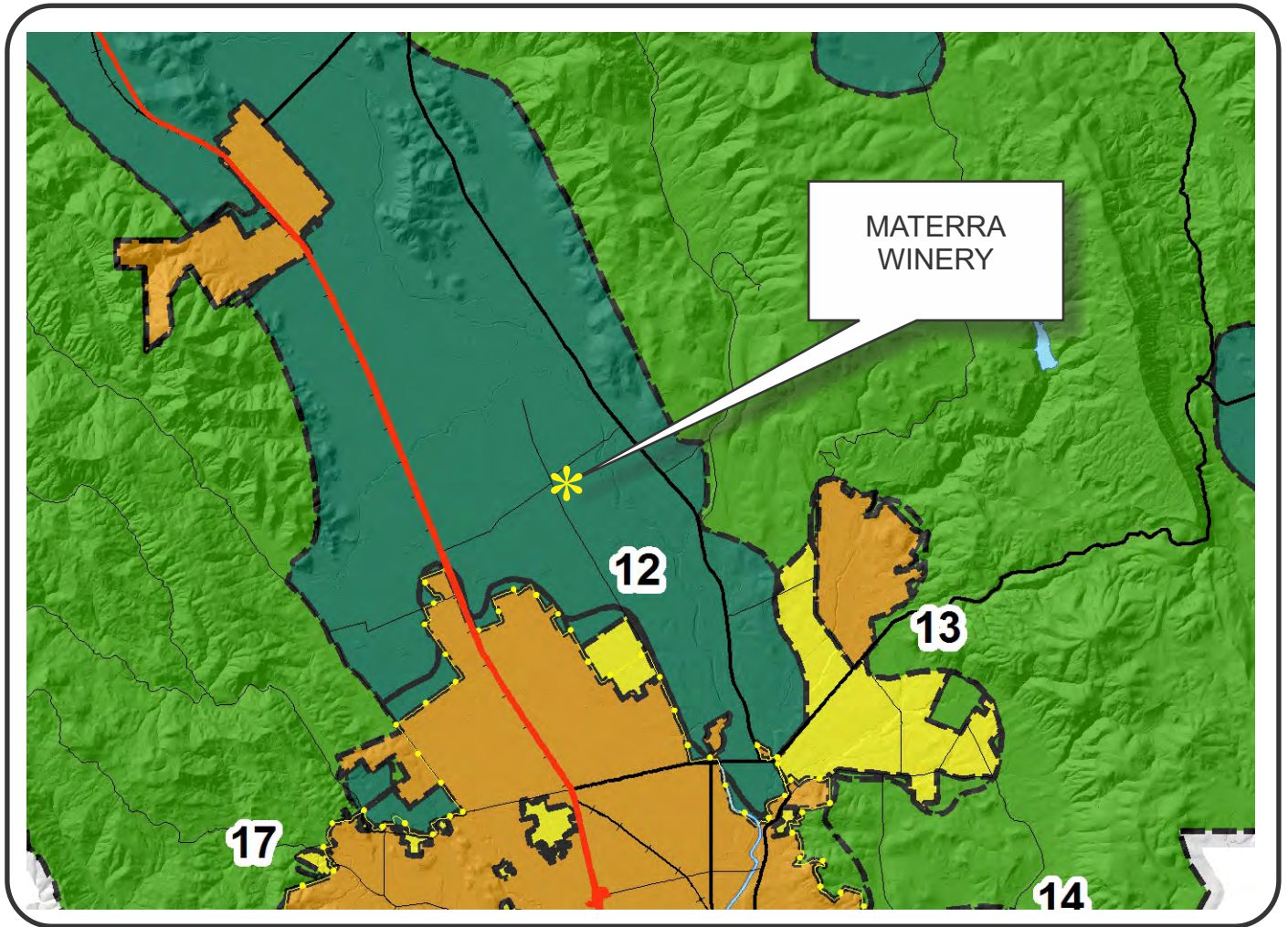


NAPA COUNTY LAND USE PLAN 2008 - 2030



LEGEND



URBANIZED OR NON-AGRICULTURAL

- Study Area
- Cities
- Urban Residential*
- Rural Residential*
- Industrial
- Public-Institutional
- Napa Pipe Mixed Use

OPEN SPACE

- Agriculture, Watershed & Open Space
- Agricultural Resource

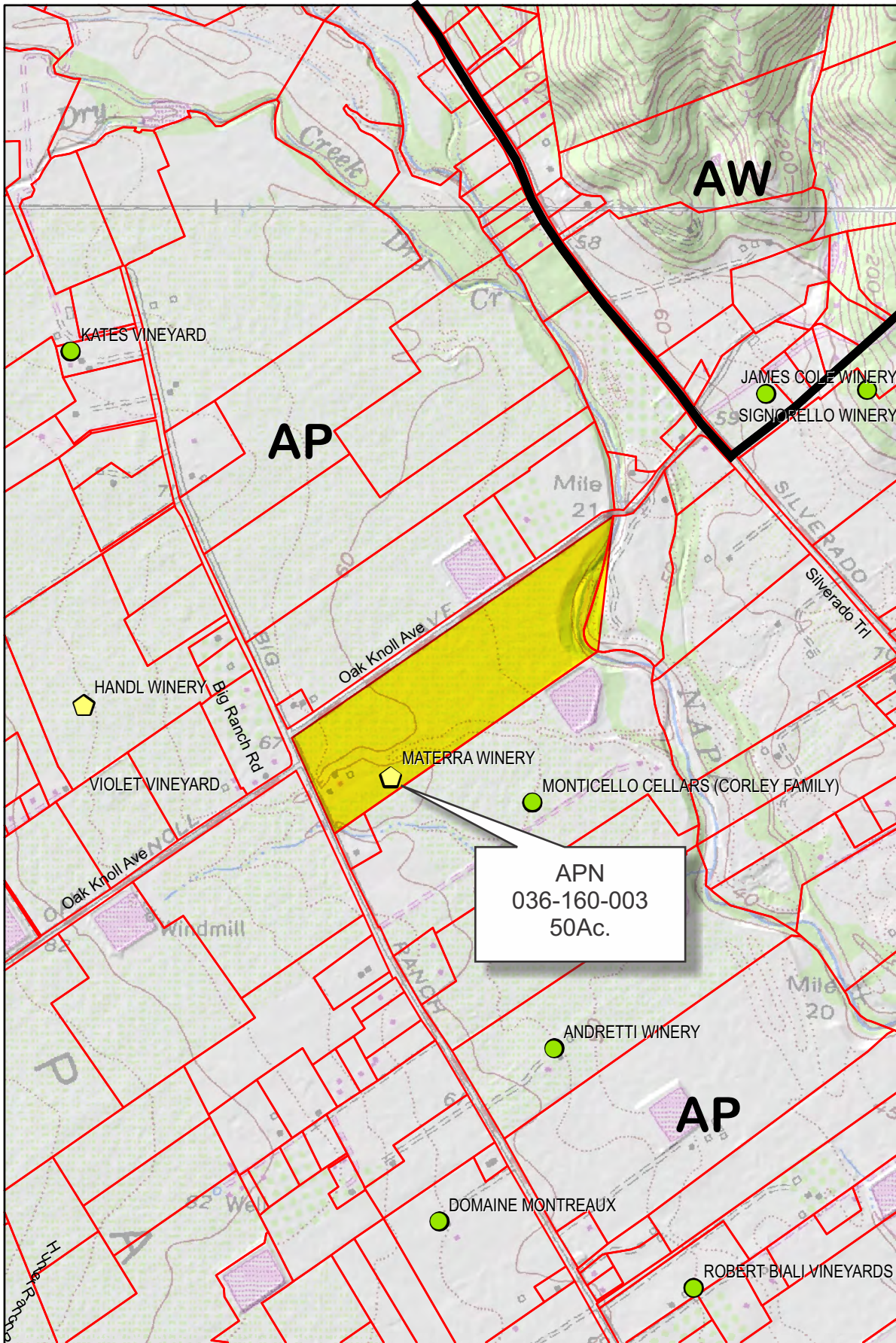
TRANSPORTATION

- Mineral Resource
- Limited Access Highway
- Major Road
- American Canyon ULL
- City of Napa RUL
- Landfill - General Plan
- Secondary Road
- Airport
- Railroad
- Airport Clear Zone

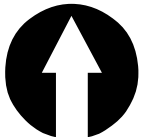
* See Action Item AG/LU-114.1 regarding agriculturally zoned areas within these land use designations

APN
036-160-003
09-02-2015
6D MOD






MATERRA WINERY

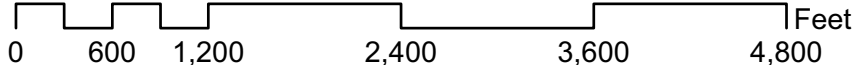


APN
036-160-003
50Ac.

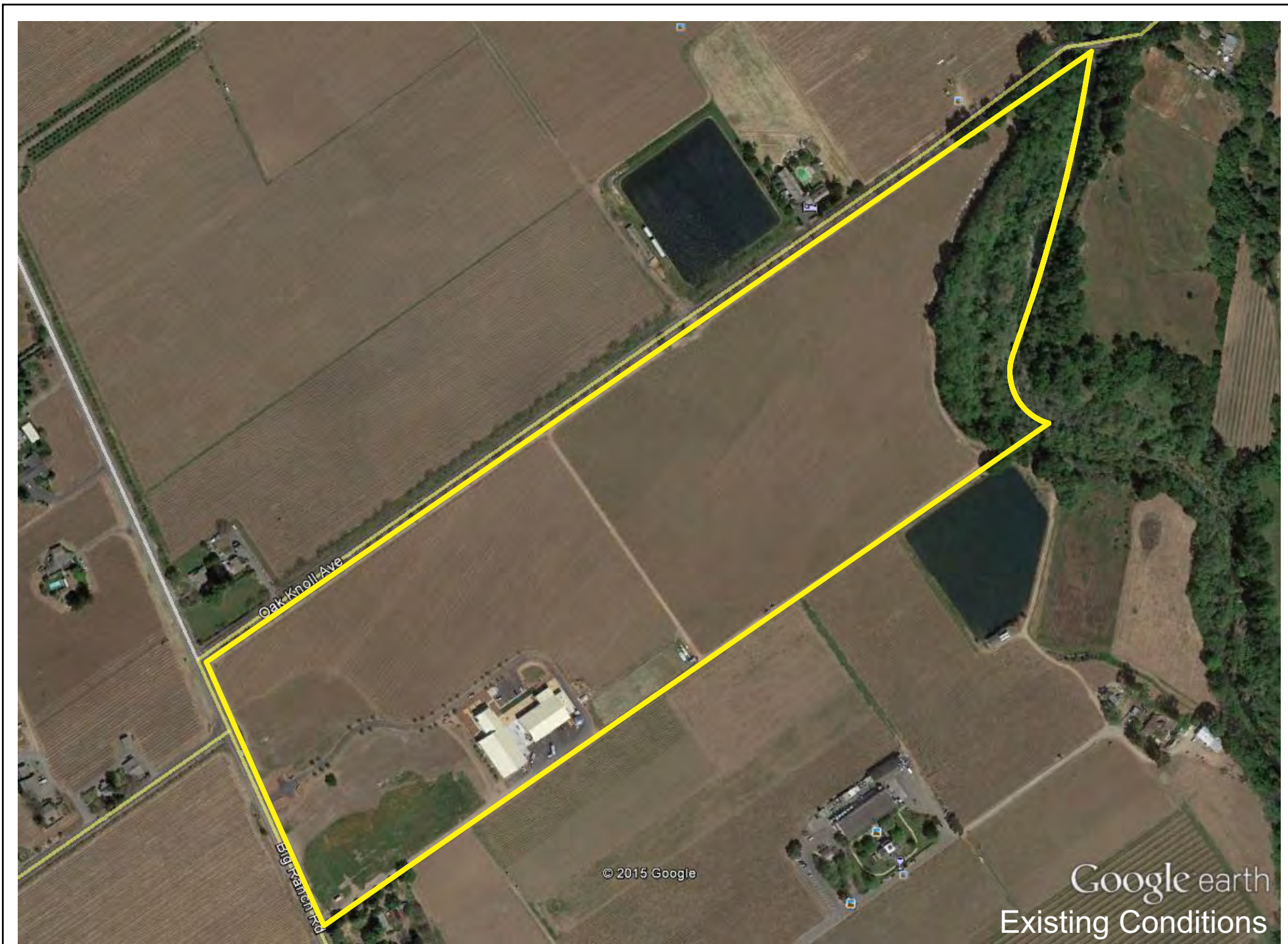


Legend

- Wineries**
- Status
-  Pending
 -  Approved
 -  Producing
 -  Zoning
 -  Parcels



MATERRA WINERY



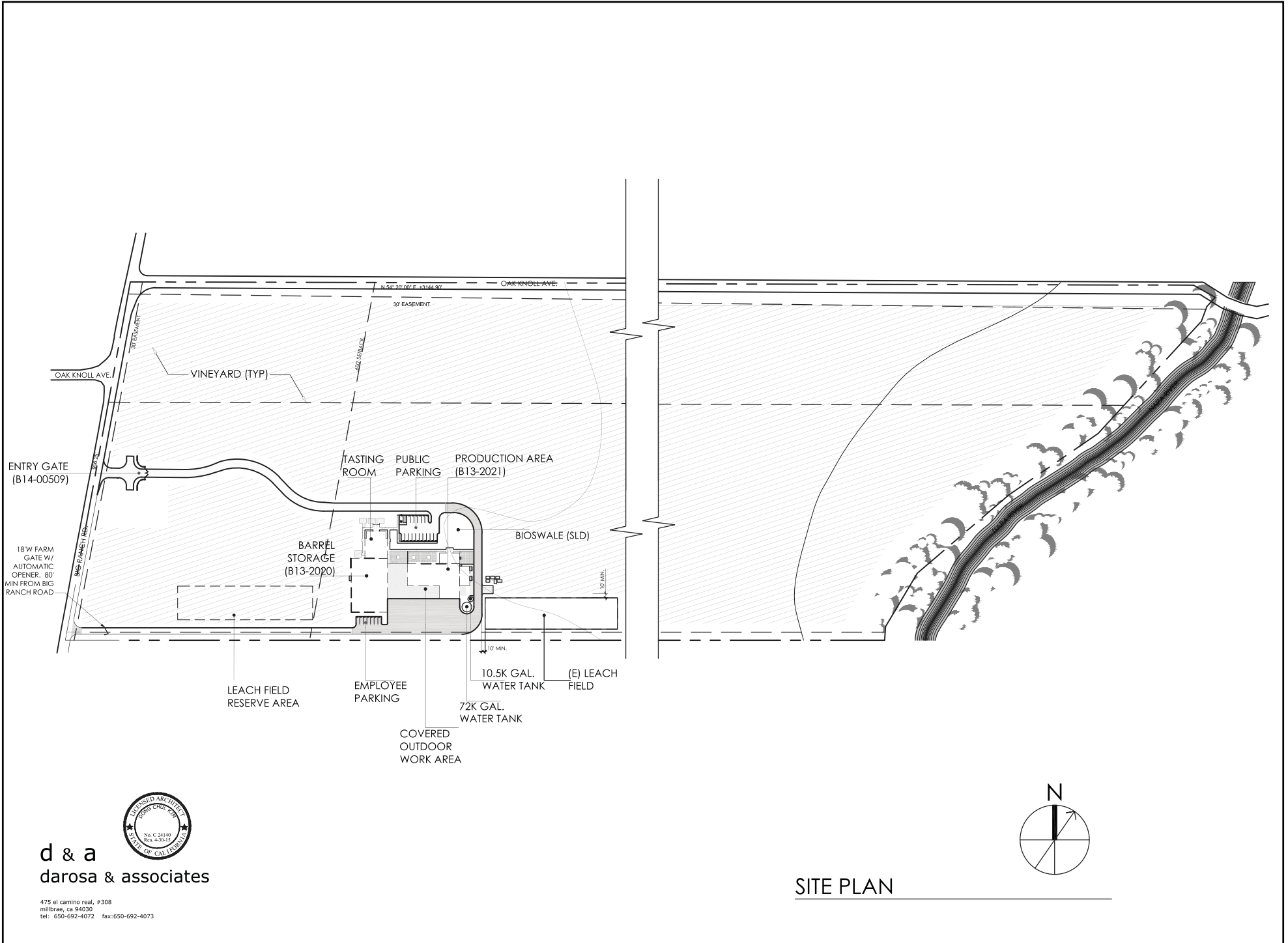
MATERRA WINERY



© 2015 Google

Google earth
Existing Conditions Detail

MATERRA WINERY



d & a
darosa & associates

475 el camino real, #308
millbrae, ca 94030
tel: 650-692-4072 fax: 650-692-4073



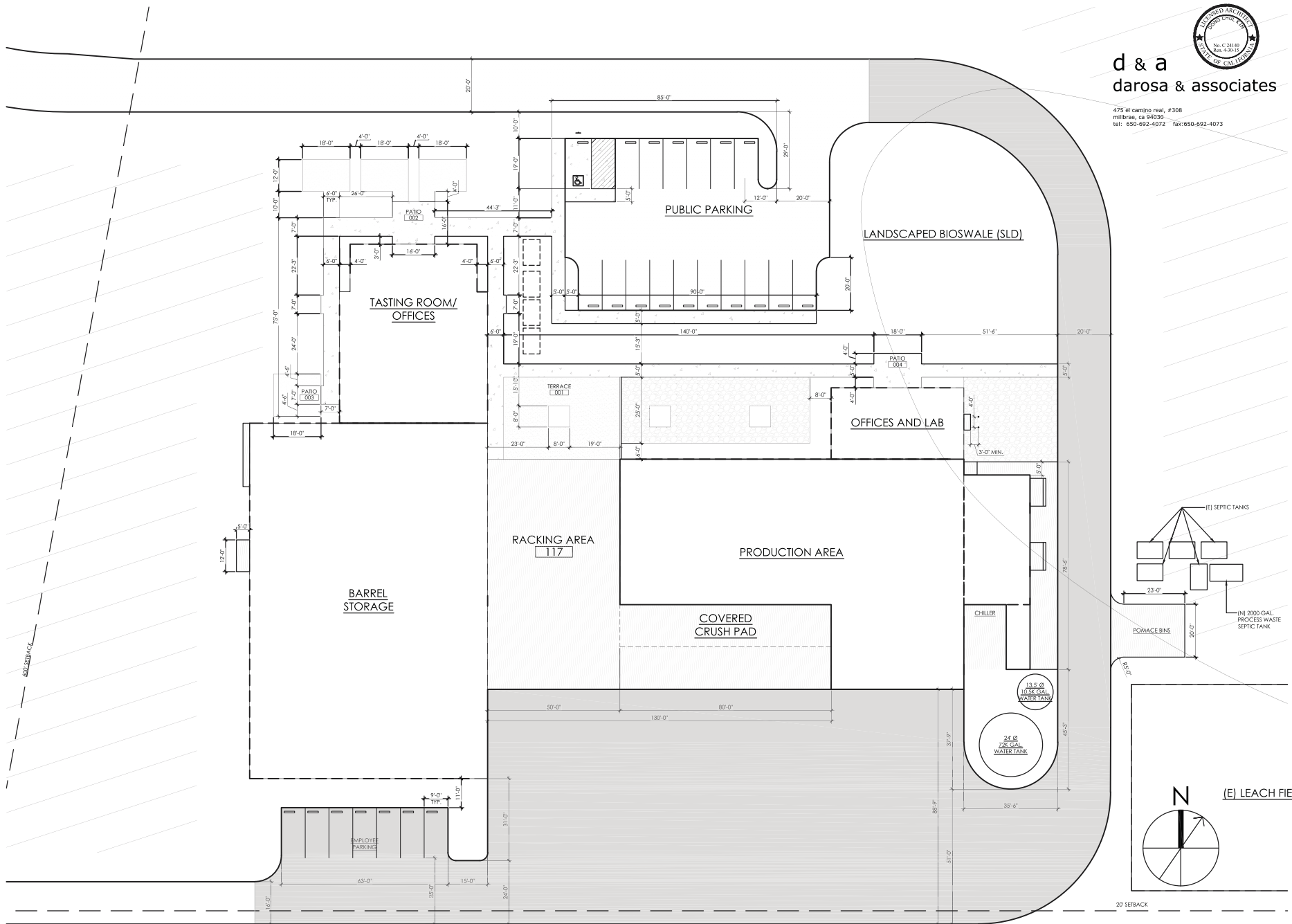
SITE PLAN

MATERRA WINERY



d & a
darosa & associates

475 el camino real, #308
 millbrae, ca 94030
 tel: 650-692-4072 fax: 650-692-4073

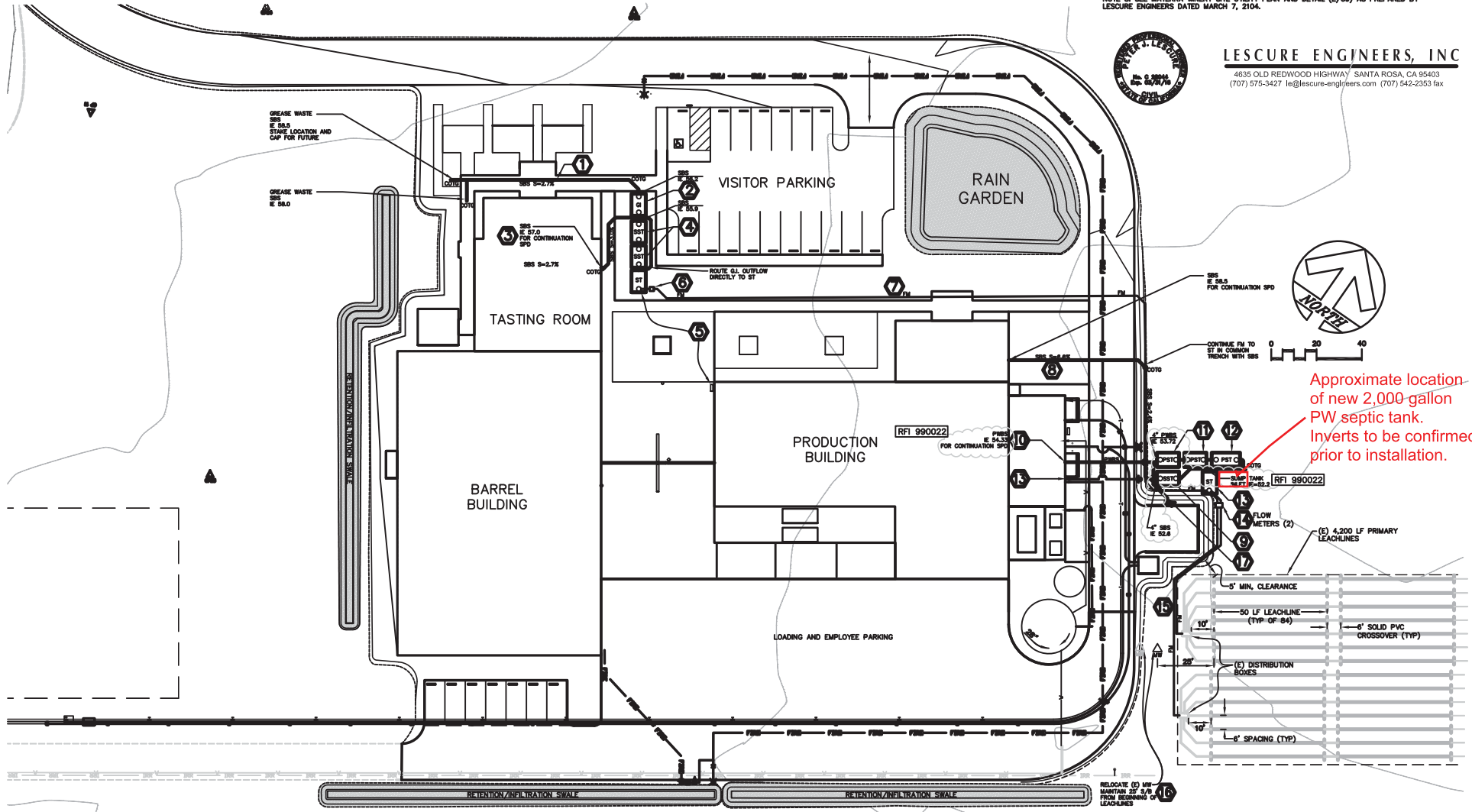


BUILDING SITE PLAN

MATERRA WINERY

WORK INCLUDED THIS SHEET

- ① INSTALL
SBS FROM TASTING ROOM TO GREASE INTERCEPTOR. DETAIL (A/4) & (B/4). CONSTRUCTION DETAIL NOTES 1, 2 & 3.
- ② INSTALL
GREASE INTERCEPTOR. DETAIL (A/3). CONSTRUCTION DETAIL NOTE 5.
- ③ INSTALL
SBS FROM TASTING ROOM TO INLET OF FIRST SS SEPTIC TANK. DETAIL (A/4) & (B/4). CONSTRUCTION DETAIL NOTES 1, 2 & 3.
- ④ INSTALL
SANITARY SEPTIC TANKS. DETAIL (B/3). REFER TO CONSTRUCTION DETAIL NOTES 4 & 5.
- ⑤ INSTALL
SUMP TANK. DETAIL (C/3). CONSTRUCTION DETAIL NOTES 5 & 7. COORDINATE CONNECTION TO WINERY ELECTRIC - SED.
- ⑥ INSTALL
FLOW METER. DETAIL (D/3).
- ⑦ INSTALL
FM FROM TASTING ROOM SUMP TANK TO PRODUCTION BUILDING SUMP TANK. DETAIL (A/4). CONSTRUCTION DETAIL NOTES 1 & 2.
- ⑧ INSTALL
SBS FROM PRODUCTION BUILDING TO INLET OF SANITARY SEPTIC TANK. DETAIL (A/4) & (B/4). CONSTRUCTION DETAIL NOTES 1, 2 & 3.
- ⑨ INSTALL
SANITARY SEPTIC TANK. CONNECT TO SBS. DETAIL (E/3). CONSTRUCTION DETAIL NOTES 4 & 5.
- ⑩ INSTALL
PWBS FROM PRODUCTION BUILDING TO INLET OF FIRST PROCESS SEPTIC TANK. DETAILS (A/4) & (B/4). CONSTRUCTION DETAIL NOTES 1, 2, 3 & 6.
- ⑪ INSTALL
PROCESS SEPTIC TANKS (2). CONNECT PWBS TO FIRST PROCESS SEPTIC TANK. DETAIL (E/3). CONSTRUCTION DETAIL NOTES 4 & 6.
- ⑫ INSTALL
PROCESS SEPTIC TANK. CONNECT TO SECOND PROCESS SEPTIC TANK. DETAILS (E/3). CONSTRUCTION DETAIL NOTES 4 & 6.
- ⑬ INSTALL
SUMP TANK. DETAIL (C/3). CONSTRUCTION DETAIL NOTES 6 & 7. COORDINATE CONNECTION TO WINERY ELECTRIC - SED.
- ⑭ INSTALL
FLOW METERS. DETAIL (F/3).
- ⑮ INSTALL
FM (2) TO (E) DISPOSAL FIELD DISTRIBUTION BOXES IN COMMON TRENCH. DETAIL (A/4). CONSTRUCTION DETAIL NOTES 1 & 2.
- ⑯ RELOCATE
MONITORING WELL. MAINTAIN 25' SETBACK FROM BEGINNING OF LEACHLINES. DETAIL (C/4).
- ⑰ INSTALL
DRAIN LINE FROM POMACE INVERSION BOX TO PROCESS SEPTIC TANK. CONSTRUCTION DETAIL NOTE 8. SEE MATERRA WINERY SITE UTILITY PLAN AND DETAIL (E/CS) AS PREPARED BY LESQUIRE ENGINEERS DATED MARCH 7, 2104.



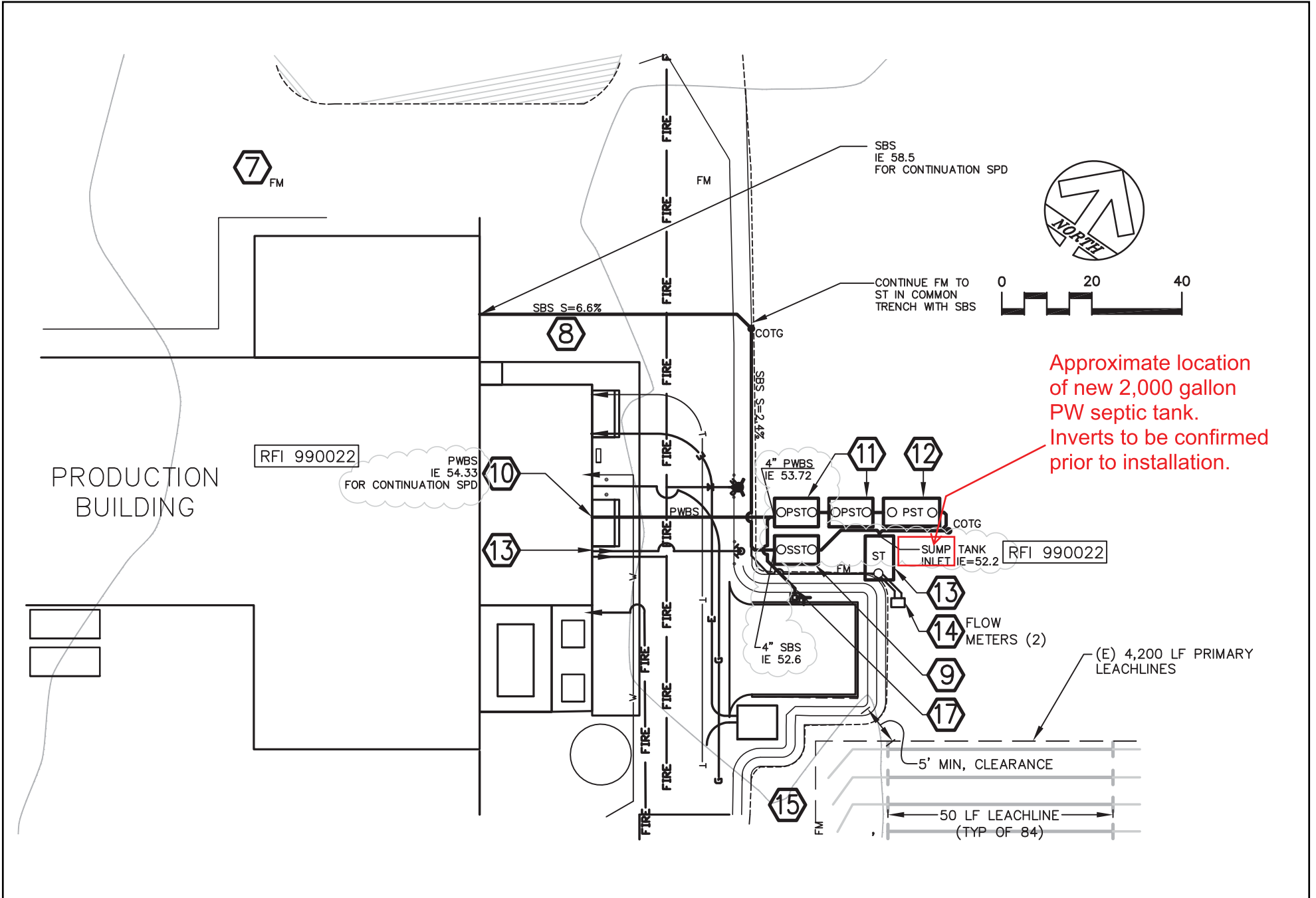
LESQUIRE ENGINEERS, INC.
 4835 OLD REDWOOD HIGHWAY SANTA ROSA, CA 95403
 (707) 575-3427 le@lesquire-engineers.com (707) 542-2353 fax



Approximate location of new 2,000-gallon PW septic tank. Inverts to be confirmed prior to installation.

MATERRA WINERY WASTEWATER SYSTEM WITH NEW TANK

MATERRA WINERY



MATERRA WINERY WASTEWATER SYSTEM WITH NEW TANK - DETAIL