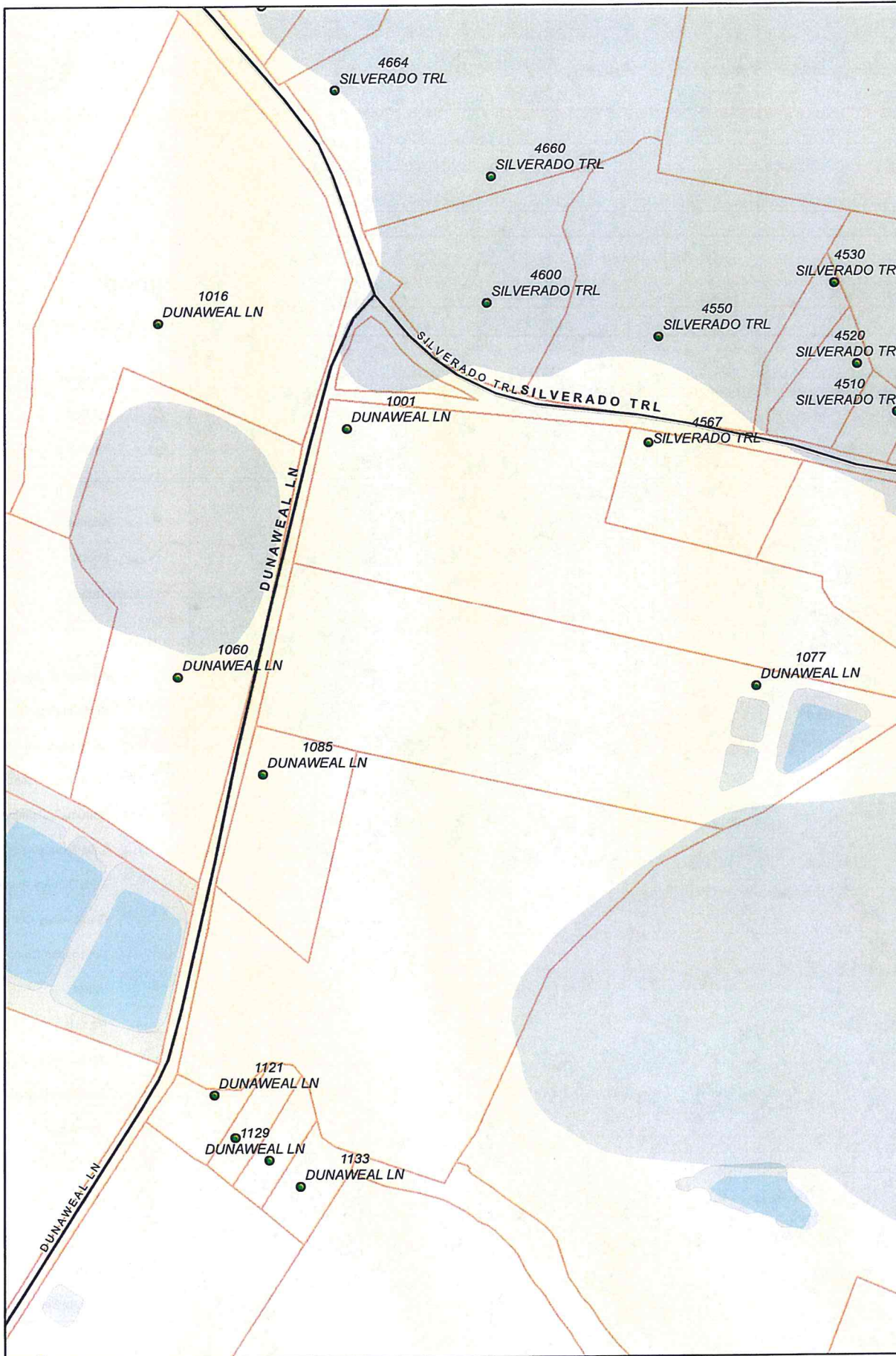




A Tradition of Stewardship
A Commitment to Service



Legend

- Address Points
- Roads
- Major Roads
- Geology
- GEO_UNIT
- Artificial fill (historic)
- Surficial deposits (Qua
- Clear Lake Volcanics (I
- Other Pleistocene - Pli
- Sonoma Volcanics (Pli
- Late Tertiary Assembla
- Early Tertiary Assembl
- Great Valley Complex (
- Franciscan Complex (C
- Water
- Parcels
- Water Bodies
- American Canyon
- Calistoga
- County
- Napa
- St Helena
- Yountville
- County Boundary

Horizontal Datum: NAD 83,
CA State Plane Coordinates,
Zone II, feet

Disclaimer: This map was prepared for
informational purpose only. No liability
is assumed for the accuracy of the
data delineated hereon.



County of Napa

Conservation, Development
& Planning

Planning General

Revised Date: 8/25/2011



A Tradition of Stewardship
A Commitment to Service

Legend

Wineries in Vicinity

- Status
- Approved
 - Pending
 - Producing
 - Unknown
 - Address Points

- Roads
- Major Roads

- Geology
GEO_UNIT
- Artificial fill (historic)
 - Surficial deposits (Quate)
 - Clear Lake Volcanics (Pl)
 - Other Pleistocene - Plioc
 - Sonoma Volcanics (Plioc)
 - Late Tertiary Assemblag
 - Early Tertiary Assemblag
 - Great Valley Complex (C
 - Franciscan Complex (Cr
 - Water

- Parcels
- Water Bodies
- American Canyon
- Calistoga
- County
- Napa
- St Helena
- Yountville
- County Boundary

County of Napa

Conservation, Development
& Planning

Planning General

Revised Date: 8/25/2011



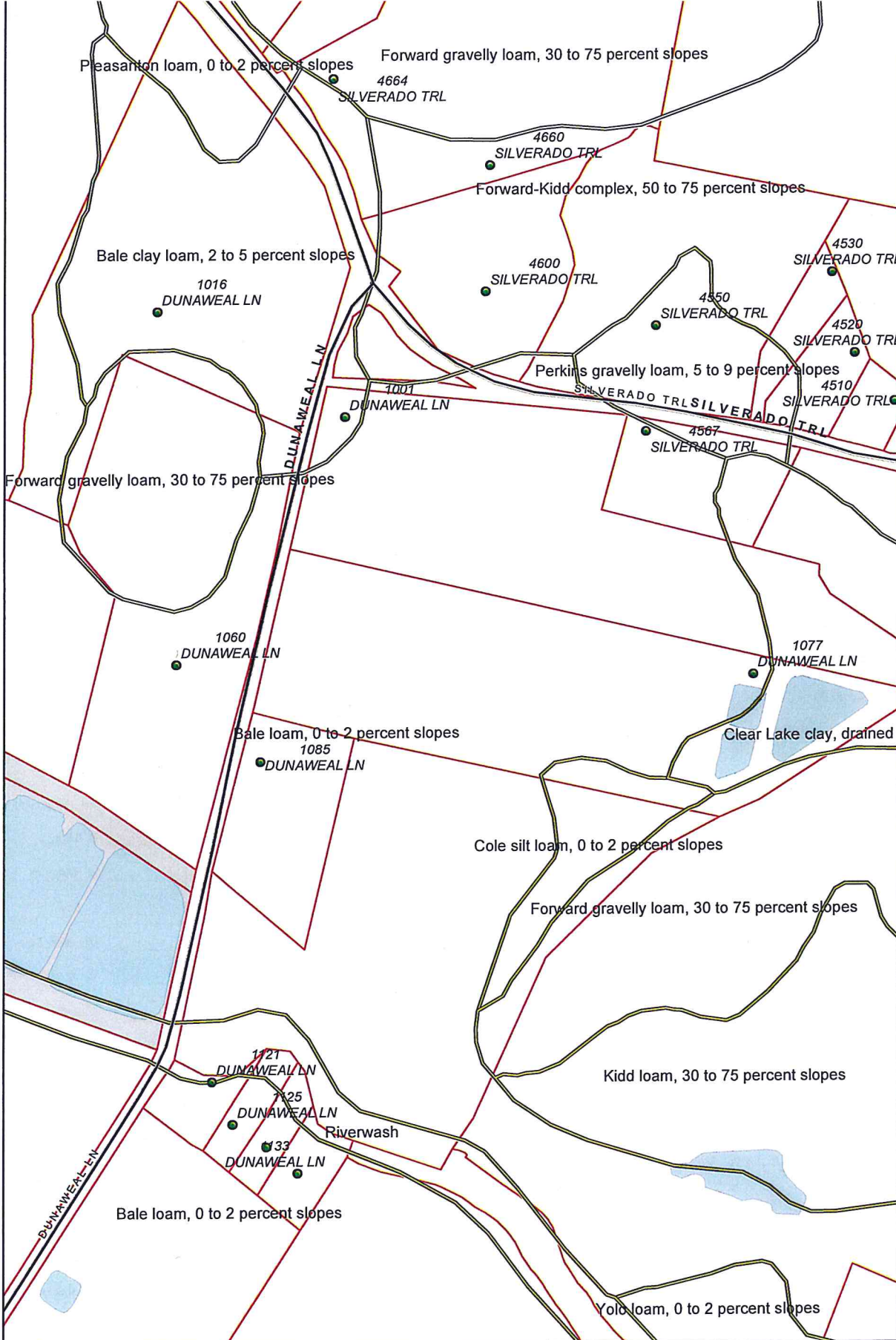
Horizontal Datum: NAD 83,
CA State Plane Coordinates,
Zone II, feet

Disclaimer: This map was prepared for
informational purpose only. No liability
is assumed for the accuracy of the
data delineated hereon.





A Tradition of Stewardship
A Commitment to Service

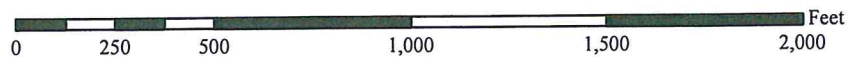


Legend

- Address Points
- Roads
- Major Roads
- Soil types
- Parcels
- Water Bodies
- American Canyon
- Calistoga
- County
- Napa
- St Helena
- Yountville
- County Boundary

Horizontal Datum: NAD 83,
CA State Plane Coordinates,
Zone II, feet

Disclaimer: This map was prepared for
informational purpose only. No liability
is assumed for the accuracy of the
data delineated hereon.



County of Napa

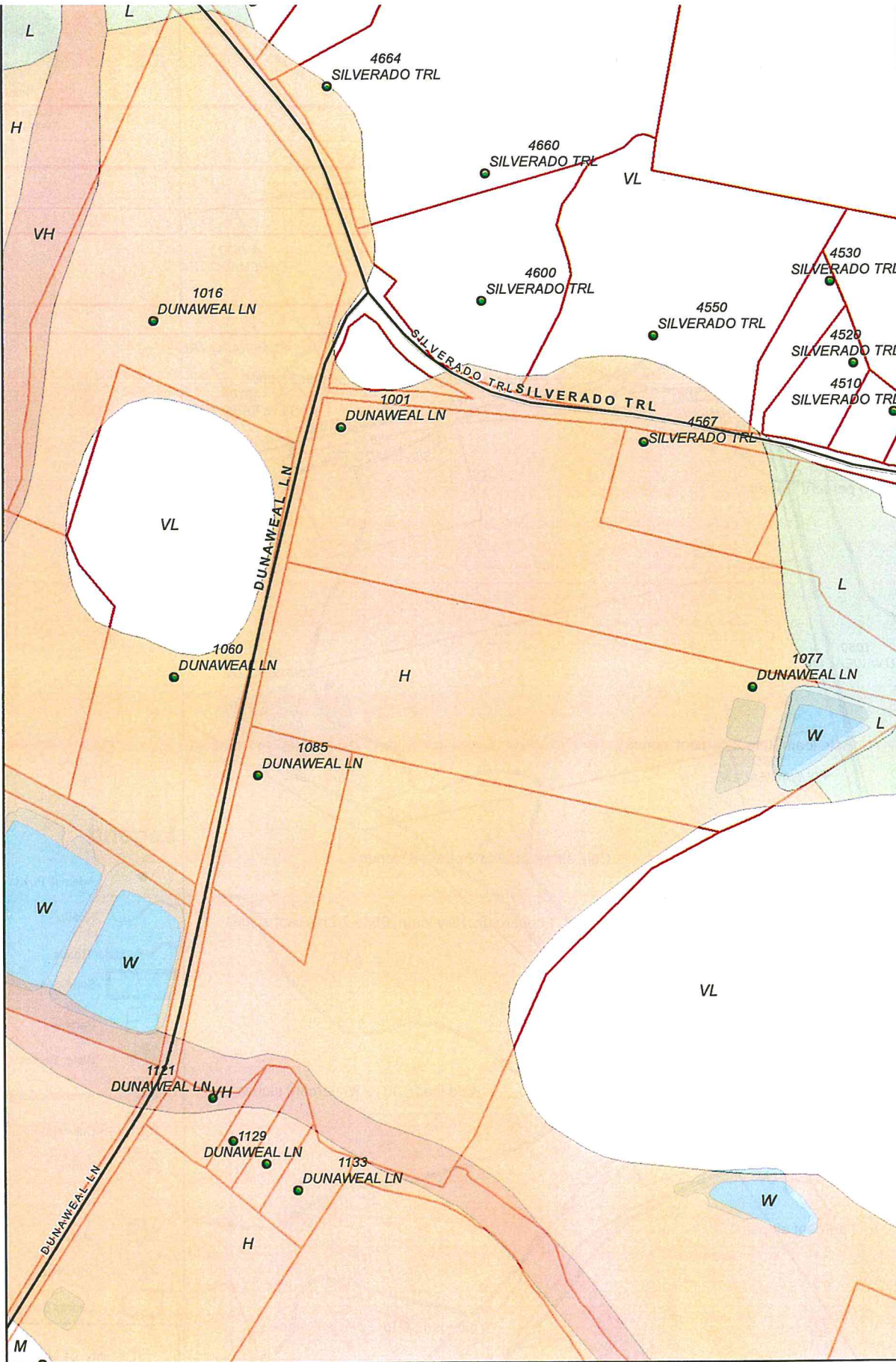
Conservation, Development
& Planning

Planning General

Revised Date: 8/25/2011



A Tradition of Stewardship
A Commitment to Service



Legend

- Address Points
- Roads
- Major Roads
- Liquefaction**
- VH Very High
- H High
- M Medium
- L Low
- VL Very Low
- W Water
- Parcels
- Water Bodies
- American Canyon
- Calistoga
- County
- Napa
- St Helena
- Yountville
- County Boundary

Horizontal Datum: NAD 83,
CA State Plane Coordinates,
Zone II, feet

Disclaimer: This map was prepared for
informational purpose only. No liability
is assumed for the accuracy of the
data delineated hereon.



County of Napa

Conservation, Development
& Planning

Planning General

Revised Date: 8/25/2011



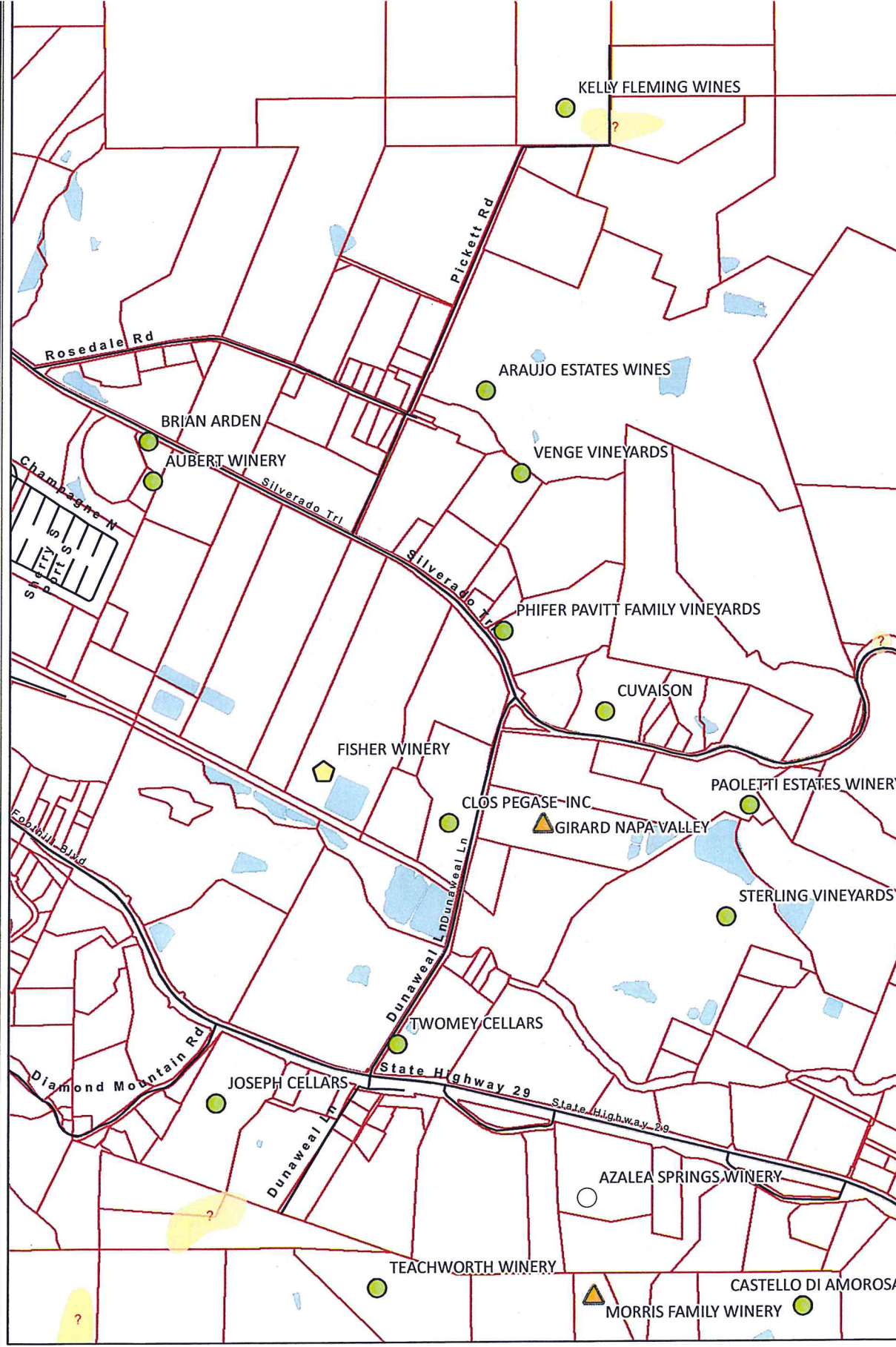
Legend

Wineries in Vi

- Status
- A Tradition of Stewardship Approv, A Commitment to Service
 - Pending
 - Producing
 - Unknown

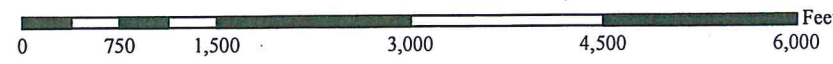
- Roads
- Major Roads
- Landslides - polygon

- FEATURE
- Unknown
 - Headwall Scarp
 - Modified Topography
 - Colluvial Deposit
 - Debris Flow/Slide, Fragr
 - Mudflow and Earthflow C
 - Rockfall and Talus Creepr
 - Rotational Landslide/Stu
 - Undifferentiated Deposit
 - Undivided Complex Dep
 - Anomalous Topography
 - Alluvial Fan Deposit
 - Alluvial Deposit
 - Alluvial Terrace Deposit
 - Alluvial Terrace Deposit,
 - Alluvial Terrace Deposit,
 - Alluvial Terrace Deposit,
 - Older Alluvial Deposit
 - Creep
 - Earthflow
 - Earthflow Complex
 - Landslide Zone
 - Large Landslide Deposit
 - Undefined Polygon
 - Parcels
 - Water Bodies
 - County Boundary



Horizontal Datum: NAD 83,
CA State Plane Coordinates,
Zone II, feet

Disclaimer: This map was prepared for
informational purpose only. No liability
is assumed for the accuracy of the
data delineated hereon.



County of Napa

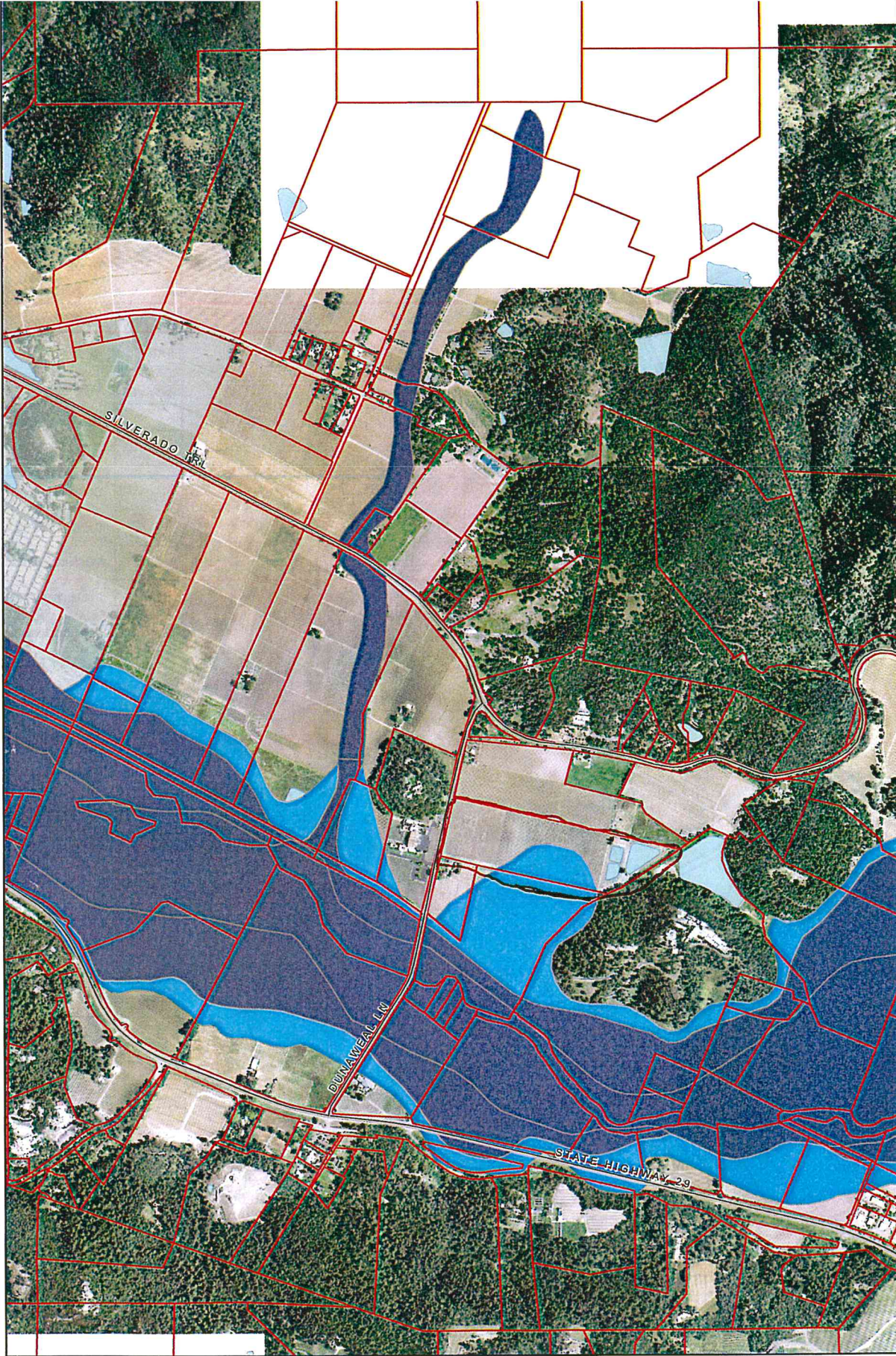
Conservation, Development
& Planning

Planning General

Revised Date: 8/25/2011



A Tradition of Stewardship
A Commitment to Service



Legend

- Major Roads
- Parcels
- Flood Zones
- FLD_ZONE
- 100 year zone
- 500 year zone
- Water Bodies
- American Canyon
- Calistoga
- County
- Napa
- St Helena
- Yountville
- County Boundary

2011 Air Photos Napa V

- RGB
- Red: Band_1
 - Green: Band_2
 - Blue: Band_3

Horizontal Datum: NAD 83,
CA State Plane Coordinates,
Zone II, feet

Disclaimer: This map was prepared for
informational purpose only. No liability
is assumed for the accuracy of the
data delineated hereon.



County of Napa

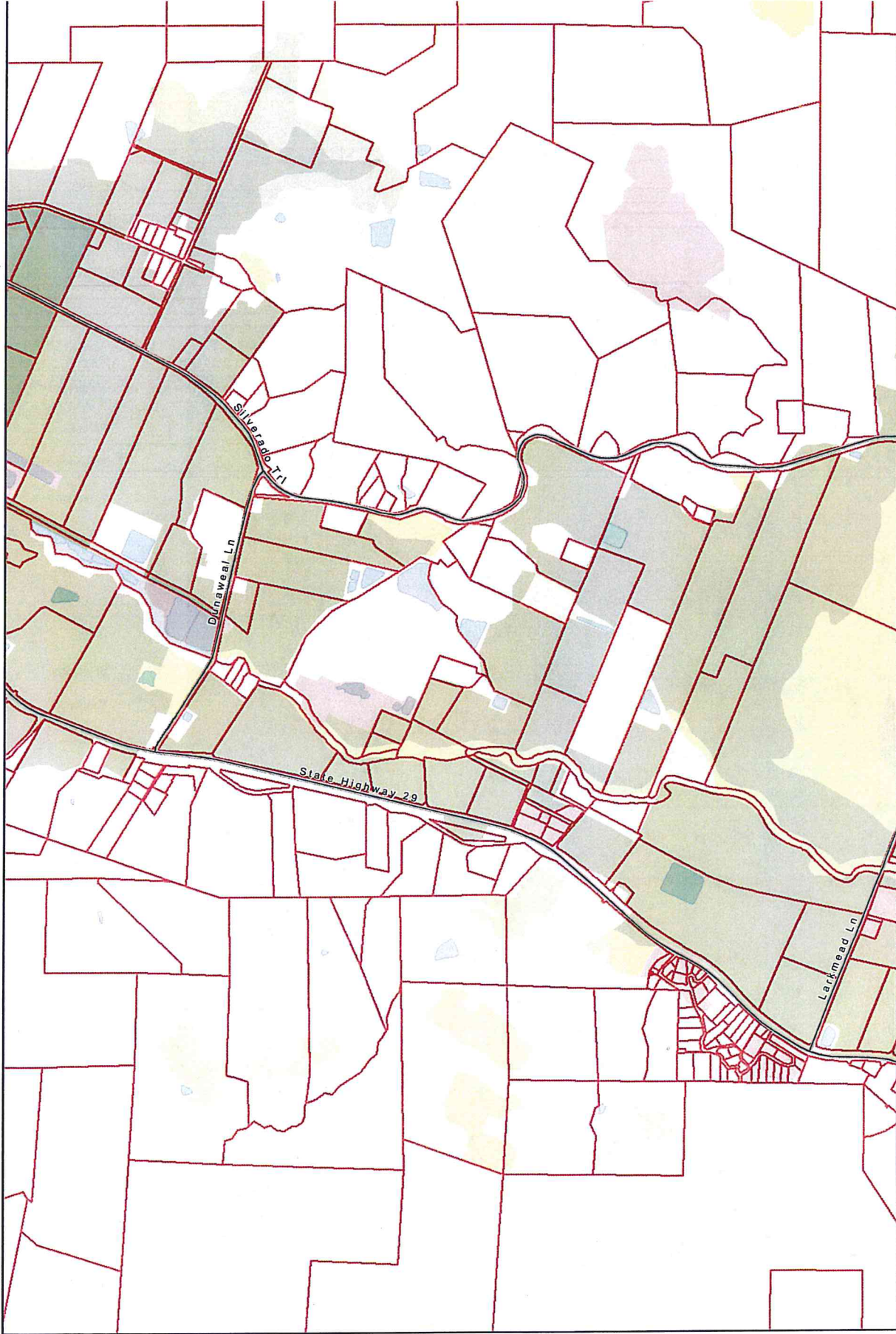
Conservation, Development
& Planning

Planning General

Revised Date: 8/25/2011



A Tradition of Stewardship
A Commitment to Service

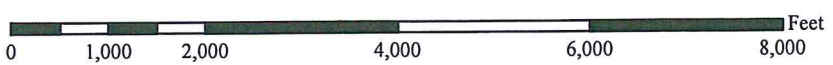


Legend

- Major Roads
- Dept of Conserv. Farmlands 2012
- Prime Farmland (P)
- Farmland of Statewide Importance
- Unique Farmland (U)
- Farmland of Local Importance (L)
- Grazing Land (G)
- Urban and Built up Land (D)
- Other Land (X)
- Water (W)
- Parcels
- Water Bodies
- American Canyon
- Calistoga
- County
- Napa
- St Helena
- Yountville
- County Boundary

Horizontal Datum: NAD 83,
CA State Plane Coordinates,
Zone II, feet

Disclaimer: This map was prepared for
informational purpose only. No liability
is assumed for the accuracy of the
data delineated hereon.

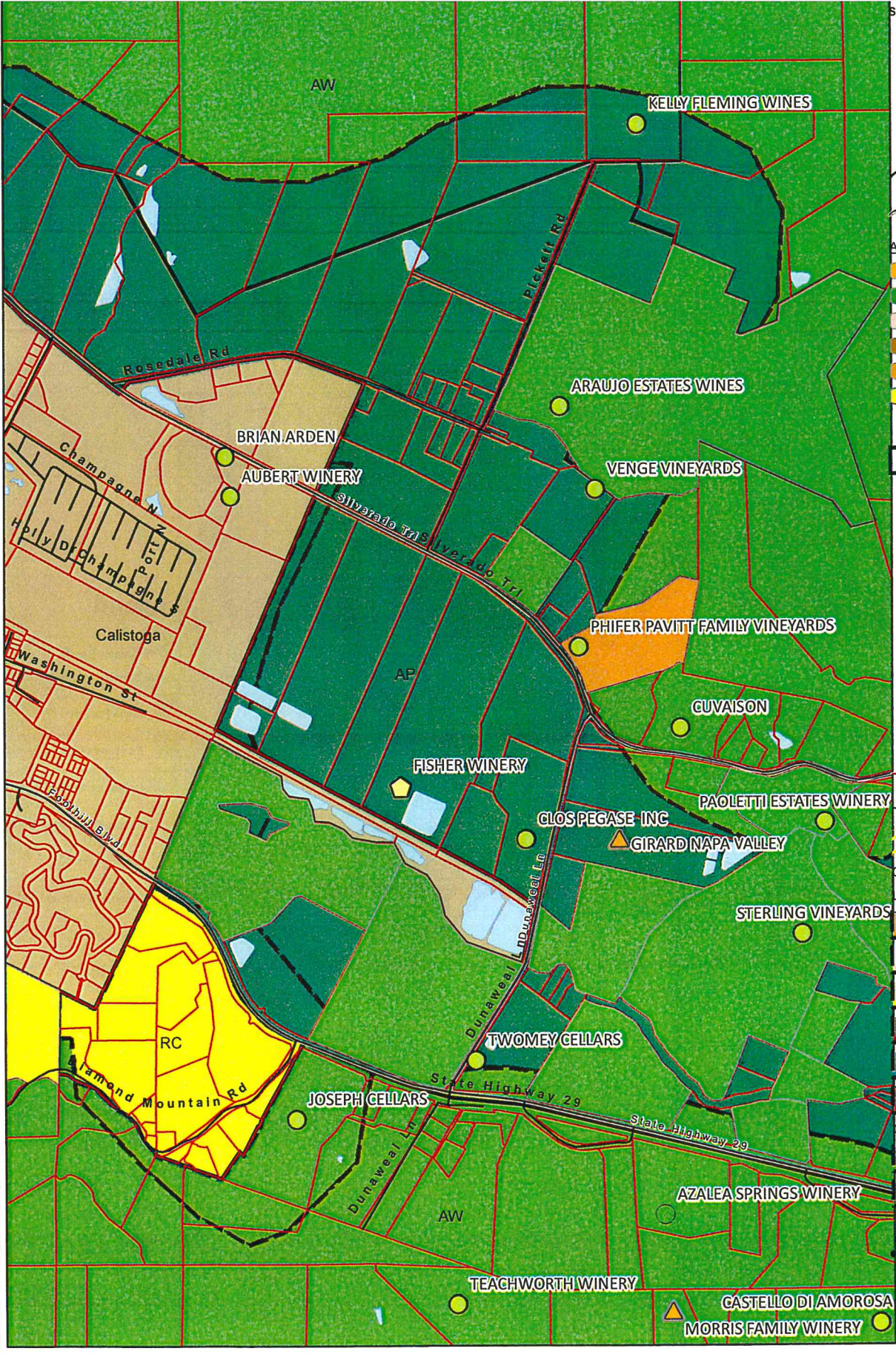


County of Napa

Conservation, Development
& Planning

Planning General

Revised Date: 8/25/2011



- Status**
- Approv
 - Pendin
 - Produc A Tradition of Stewardship
A Commitment to Service
 - Unknown
- Roads**
- Roads
 - Major Roads
- Ag Contracts**
- unknown type
 - A
 - C
 - E
 - F
 - H
- Parcels**
- Parcels
- Zoning (outline)**
- Water Bodies
 - American Canyon
 - Calistoga
 - County
 - Napa
 - St Helena
 - Yountville
 - Landfill - General Plan
- Other Features**
- Airport
 - Railroad
 - Airport Clear Zone
- General Plan 2008-2030**
- URBANIZED OR NON-AGRICULTURAL**
- Cities
 - Urban Residential
 - Rural Residential
 - Industrial
 - Public-Institutional
 - Study Area
- OPEN SPACE**
- Agriculture, Watershed &
 - Agricultural Resource
- TRANSPORTATION**
- Mineral Resource
 - County Boundary

Horizontal Datum: NAD 83,
CA State Plane Coordinates,
Zone II, feet

Disclaimer: This map was prepared for
informational purpose only. No liability
is assumed for the accuracy of the
data delineated hereon.



County of Napa

Conservation, Development
& Planning

Planning General

Revised Date: 8/25/2011



A Tradition of Stewardship
A Commitment to Service

Legend

Wineries in Vicinity

Status

- Approved
- Pending
- Producing
- Unknown

Roads

Major Roads

- Parcels
- Water Bodies
- American Canyon
- Calistoga
- County
- Napa
- St Helena
- Yountville

General Plan 2008-2030

URBANIZED OR NON-AGRICULTURAL

- Cities
- Urban Residential
- Rural Residential
- Industrial
- Public-Institutional
- Study Area

OPEN SPACE

- Agriculture, Watershed &
- Agricultural Resource

TRANSPORTATION

- Mineral Resource
- County Boundary

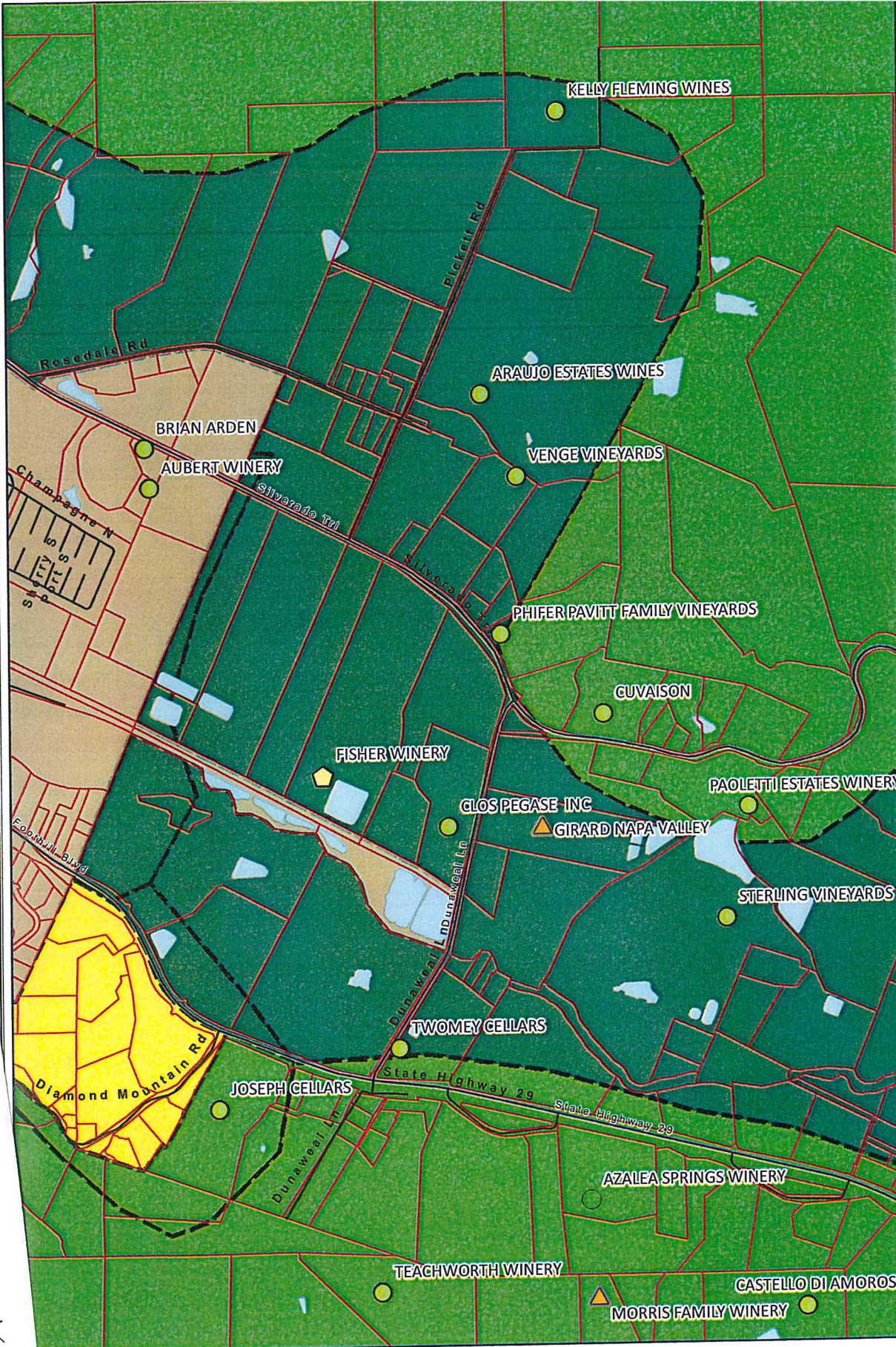
County of Napa



Conservation, Development
& Planning

Planning General

Revised Date: 8/25/2011



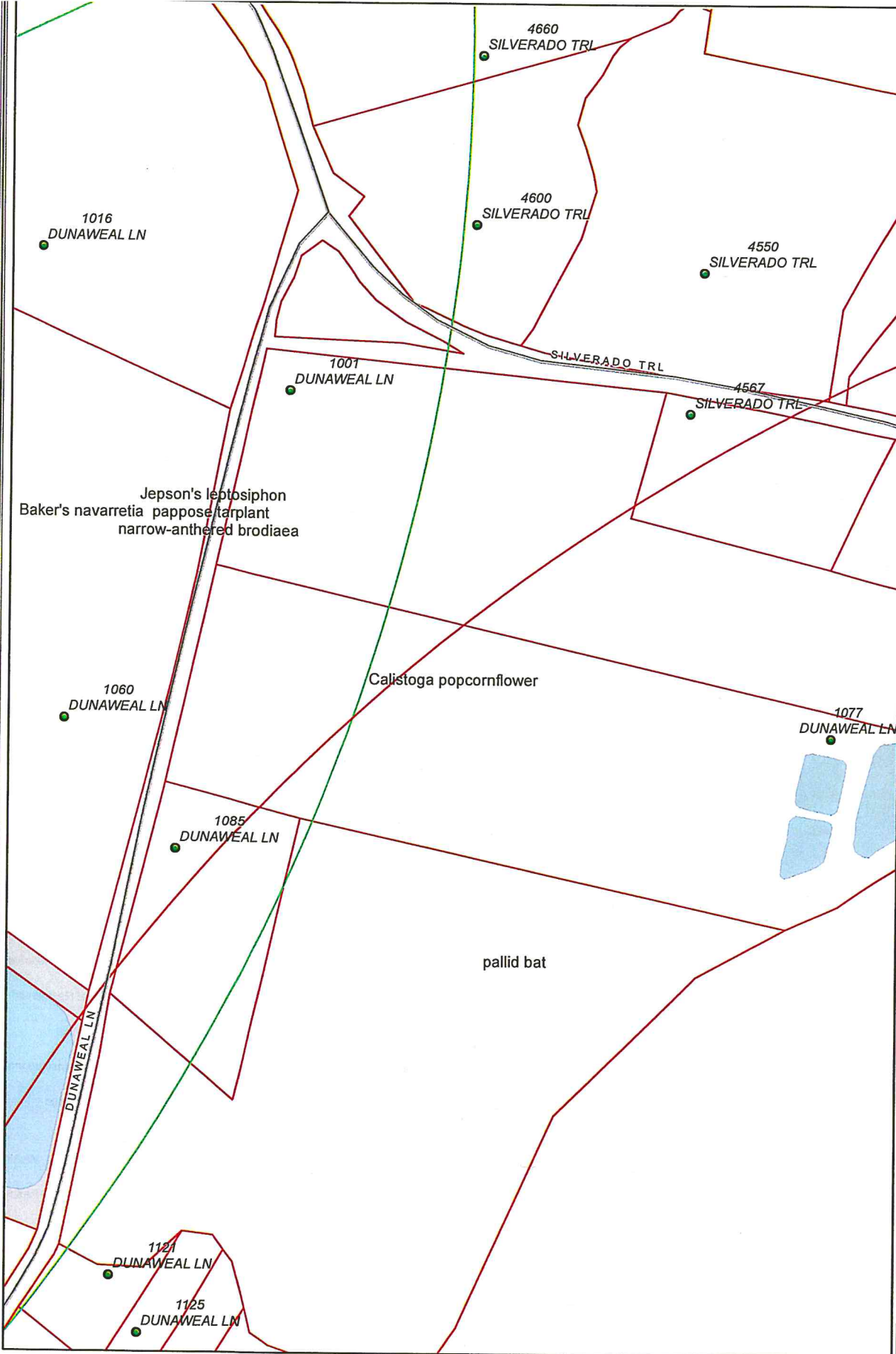
Vertical Datum: NAD 83,
State Plane Coordinates,
Feet

Disclaimer: This map was prepared for informational purposes only. No liability is assumed for the accuracy of the information presented herein.





A Tradition of Stewardship
A Commitment to Service



Legend

- Address Points
- Major Roads
- Natural Diversity Database (F&G)**
- Plant (80m)
- Plant (specific)
- Plant (non-specific)
- Plant (circular)
- Animal (80m)
- Animal (specific)
- Animal (non-specific)
- Animal (circular)
- Terr. Comm. (80)
- Terr. Comm. (specific)
- Terr. Comm. (non-spec)
- Terr. Comm. (circular)
- Aqu. Comm. (80)
- Aqu. Comm. (specific)
- Aqu. Comm. (non-spec)
- Aqu. Comm. (circular)
- Parcels
- Water Bodies
- American Canyon
- Calistoga
- County
- Napa
- St Helena
- Yountville
- County Boundary

Horizontal Datum: NAD 83,
CA State Plane Coordinates,
Zone II, feet

Disclaimer: This map was prepared for
informational purpose only. No liability
is assumed for the accuracy of the
data delineated hereon.



County of Napa

Conservation, Development
& Planning

Planning General

Revised Date: 8/25/2011