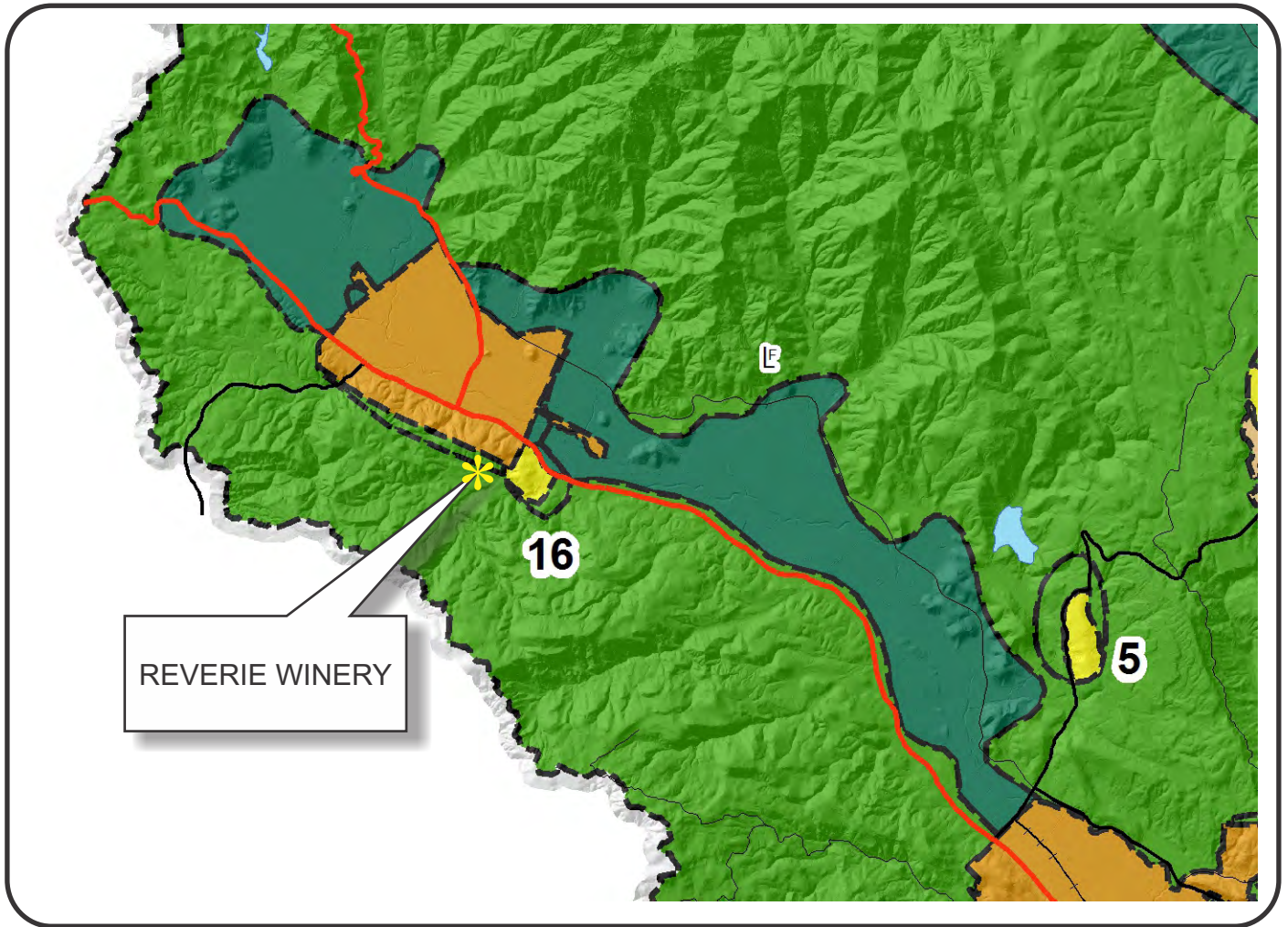


NAPA COUNTY LAND USE PLAN 2008 - 2030



LEGEND



URBANIZED OR NON-AGRICULTURAL

- Study Area
- Cities
- Urban Residential*
- Rural Residential*
- Industrial
- Public-Institutional
- Napa Pipe Mixed Use

OPEN SPACE

- Agriculture, Watershed & Open Space
- Agricultural Resource

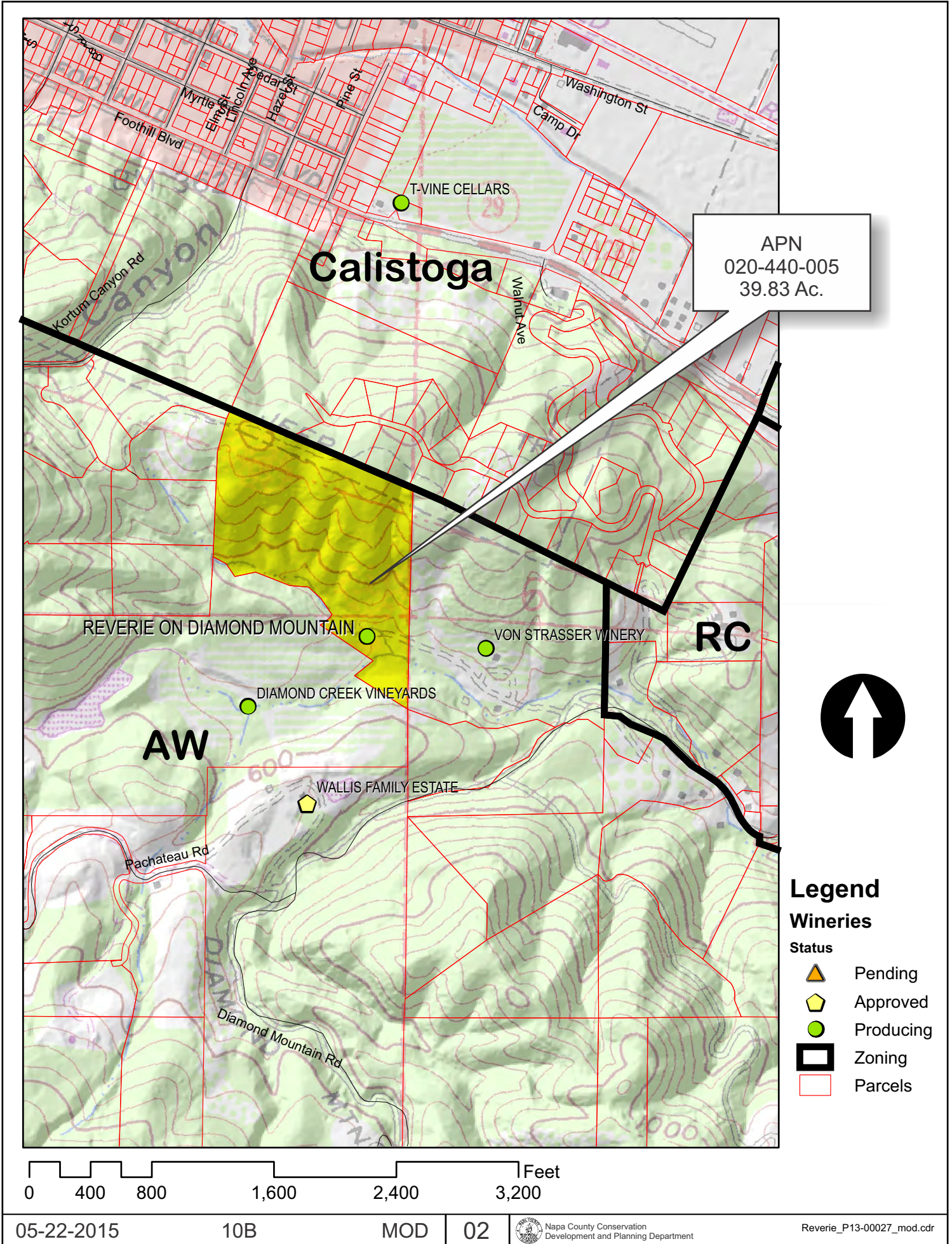
TRANSPORTATION

- Mineral Resource
- Limited Access Highway
- Major Road
- American Canyon ULL
- City of Napa RUL
- Landfill - General Plan
- Secondary Road
- Airport
- Railroad
- Airport Clear Zone

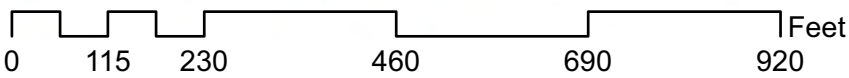
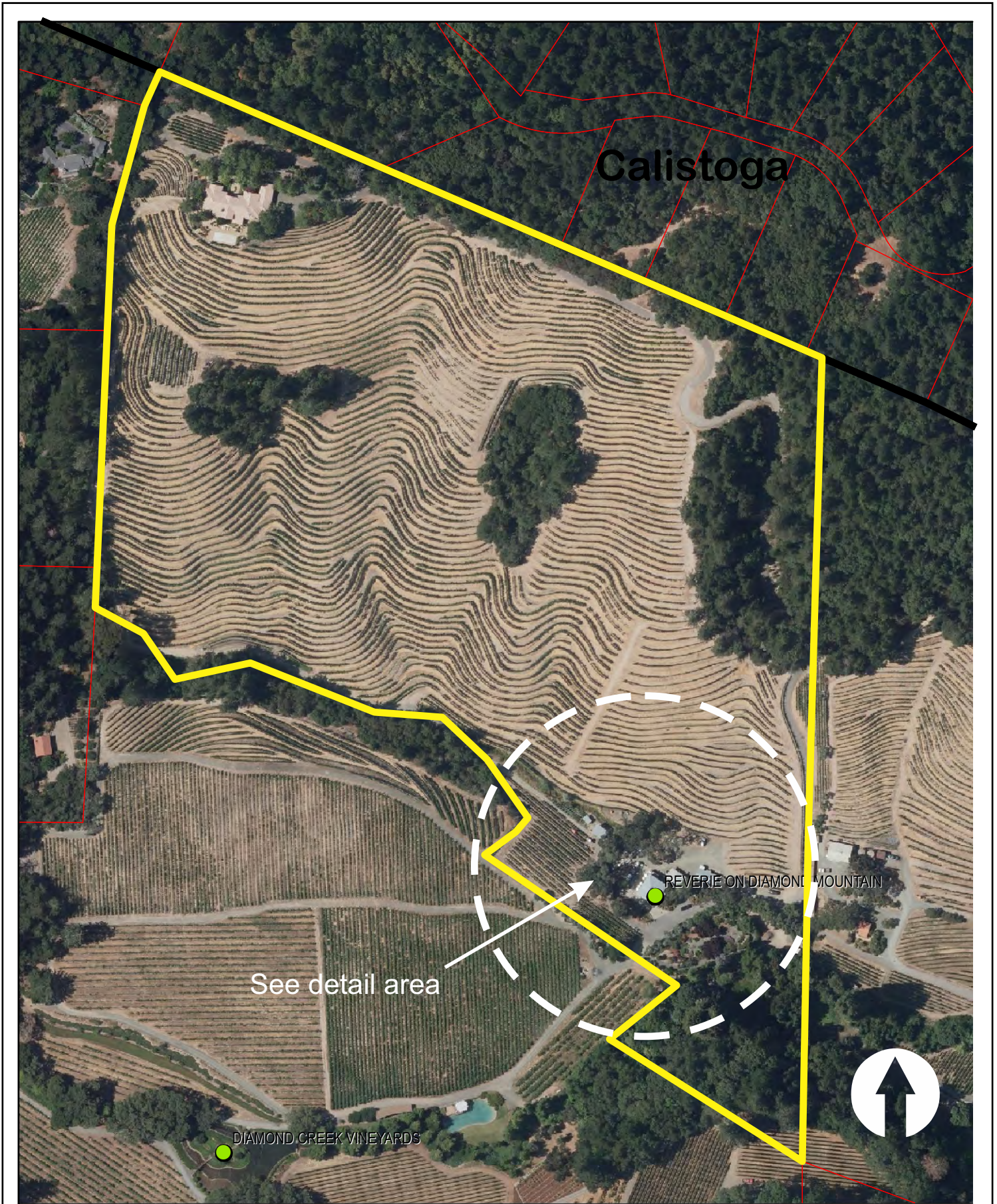
* See Action Item AG/LU-114.1 regarding agriculturally zoned areas within these land use designations

APN
020-440-005
05-22-2015
10B MOD

REVERIE WINERY



REVERIE WINERY



Existing Conditions
photo date 2014

05-22-2015

10B

MOD

03

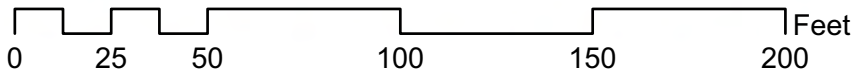
Napa County Conservation
Development and Planning Department

Reverie_P13-00027_mod.cdr

REVERIE WINERY

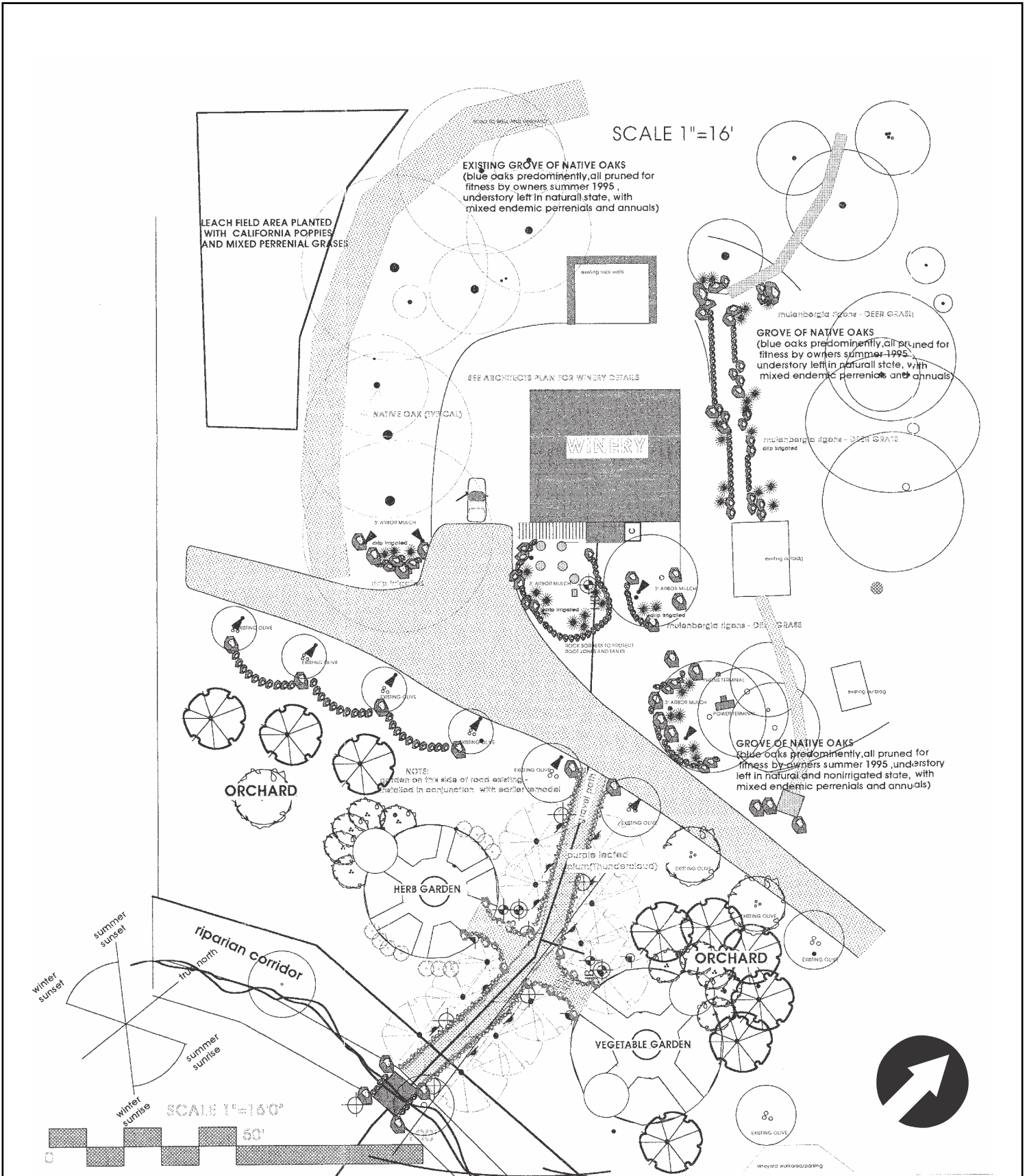


REVERIE ON DIAMOND MOUNTAIN



Existing Conditions Detail
photo date 2014

REVERIE WINERY

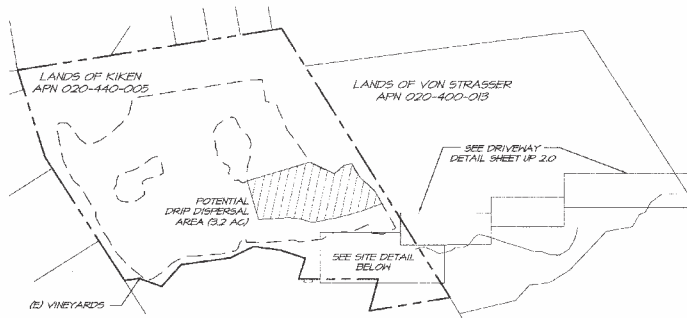


Landscaping Approved per Use Permit 94254

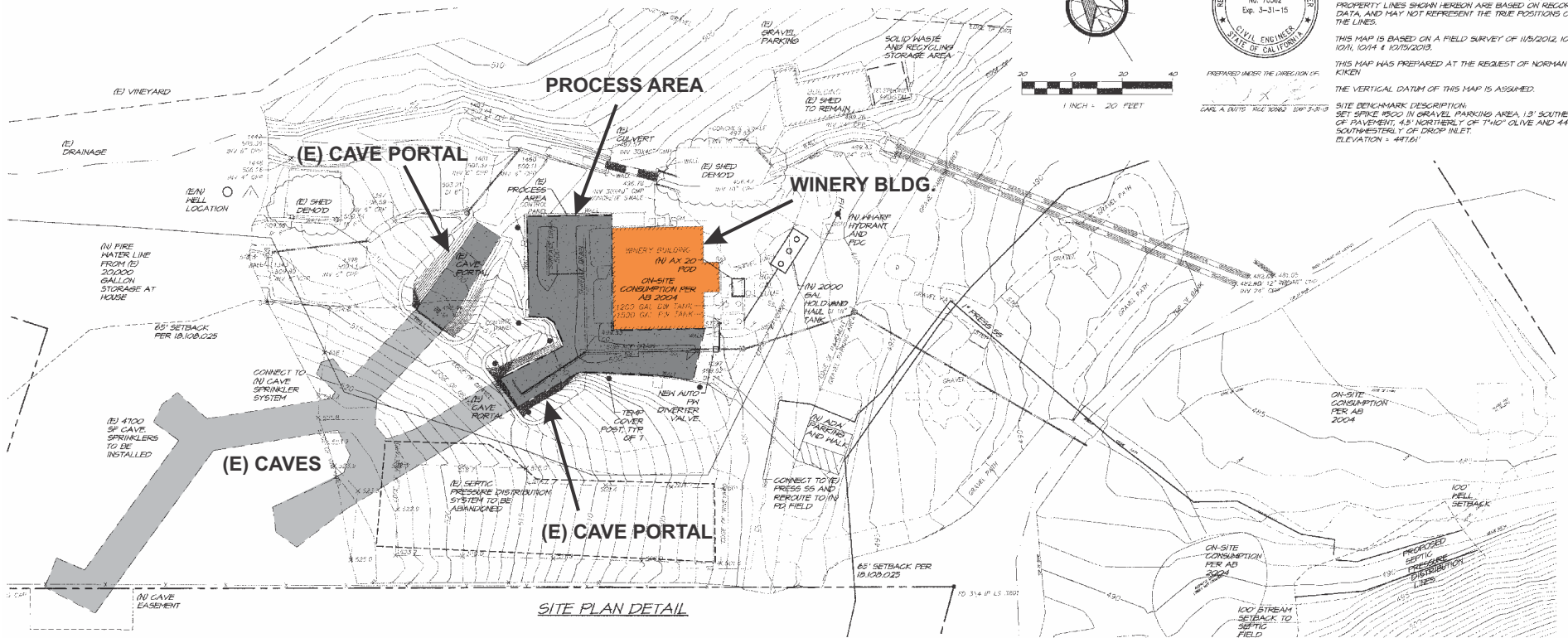
REVERIE WINERY

REVERIE WINERY USE PERMIT MAJOR MODIFICATION

NAPA COUNTY CALIFORNIA



SITE OVERVIEW
SCALE: 1" = 300'



SITE PLAN DETAIL

LINETYPE LEGEND

- FLOODLINE
- - - PROPERTY LINE
- - - EASEMENT/SETBACK LINE
- - - ROAD CENTERLINE
- - - VINEYARD EXTENTS



NOTES:

THIS MAP DOES NOT REPRESENT A PROPERTY LINE SURVEY. PROPERTY LINES SHOWN HEREON ARE BASED ON RECORD DATA, AND MAY NOT REPRESENT THE TRUE POSITIONS OF THE LINES.

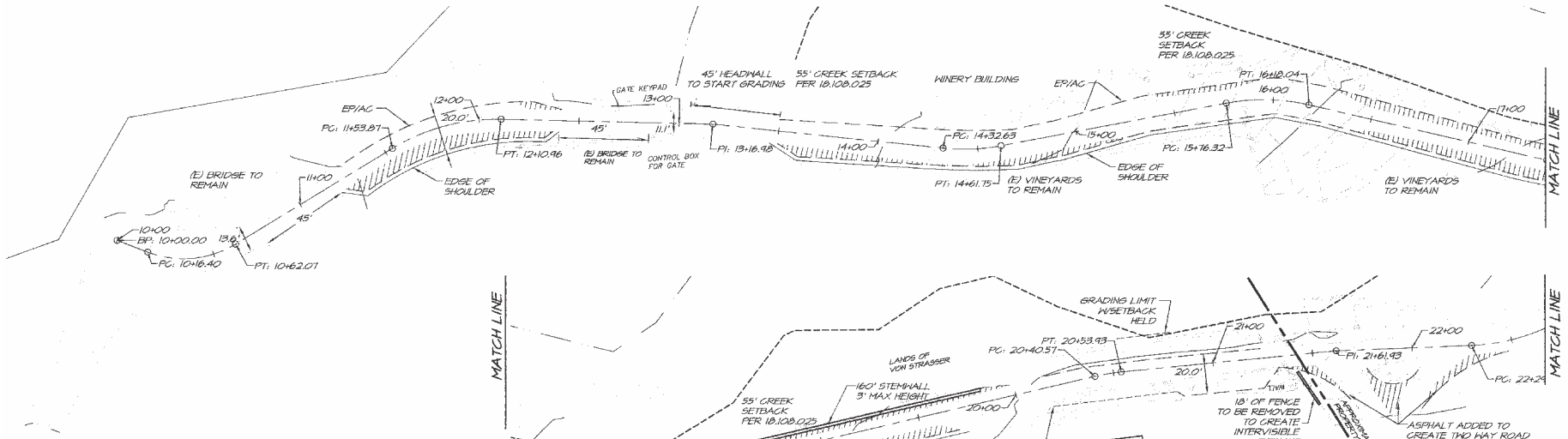
THIS MAP IS BASED ON A FIELD SURVEY OF 11/5/2012, 10/1, 10/11, 10/14 & 10/25/2013.

THIS MAP WAS PREPARED AT THE REQUEST OF NORMAN KIKEN.

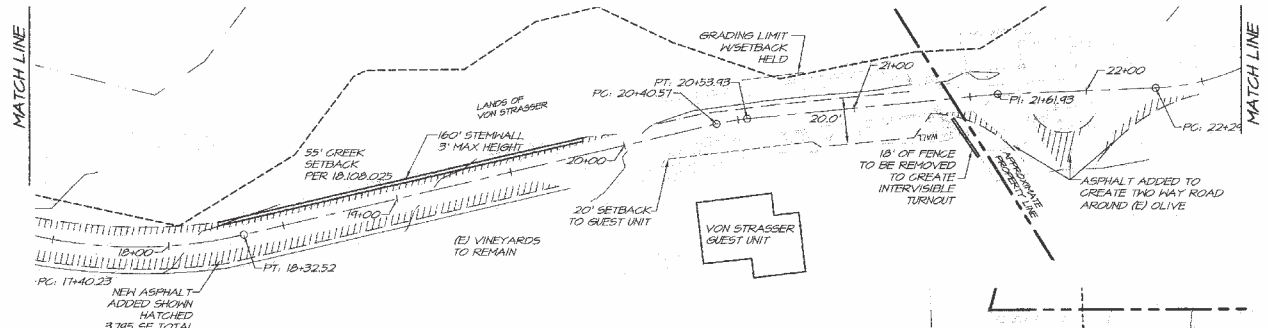
THE VERTICAL DATUM OF THIS MAP IS ASSUMED.

SITE BENCHMARK DESCRIPTION:
SET SPIKE 1000 IN GRAVEL PARKING AREA, 1.3' SOUTHERLY OF PAVEMENT, 4.8' NORTHERLY OF 7"Ø OLIVE AND 44" SOUTHWESTERLY OF DROP INLET. ELEVATION = 447.61'

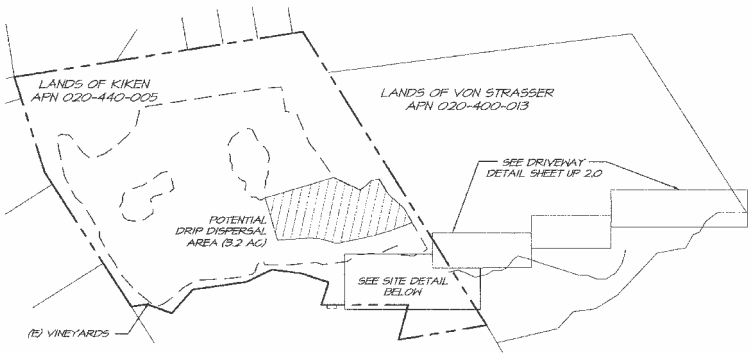
REVERIE WINERY



DRIVEWAY STA: 10+00 - 17+50
SCALE: 1" = 30'



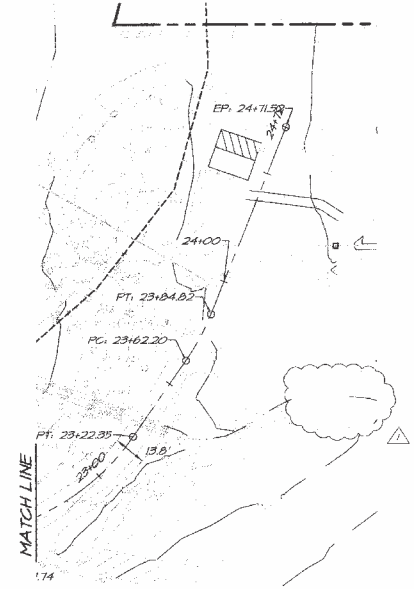
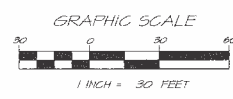
DRIVEWAY STA: 17+50 - 22+50
SCALE: 1" = 30'



SITE OVERVIEW
SCALE: 1" = 300'



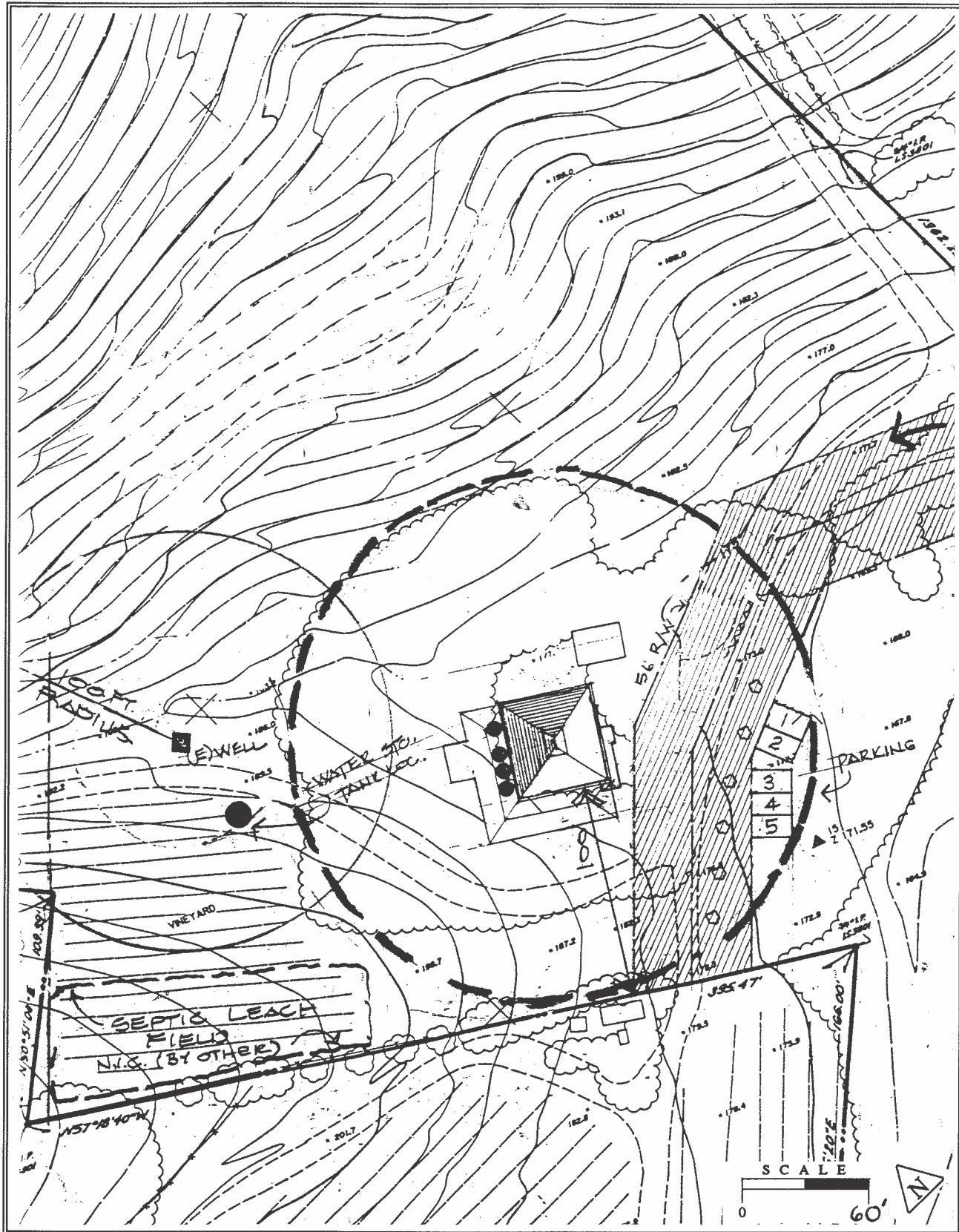
PREPARED UNDER THE DIRECTION OF
CARL A. BUTTS RCE 10262 EXP 3-31-13



DRIVEWAY STA: 22+50 - 24+71
SCALE: 1" = 30'

REVERIE WINERY

KIKEN - REVERIE ON DIAMOND MOUNTAIN

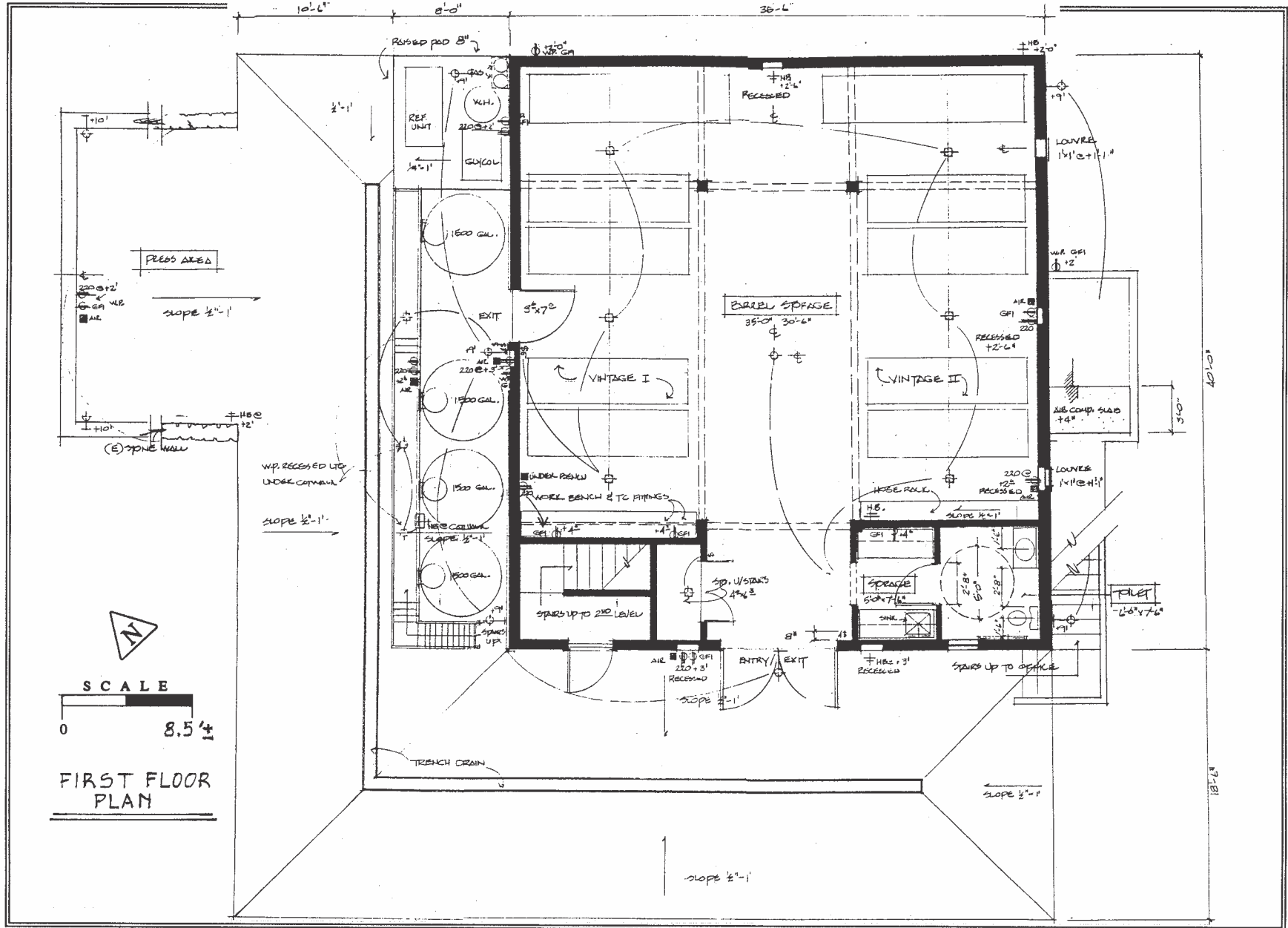


3-13-95 10B UP

Site Plan Approved per Use Permit 94254

REVERIE WINERY

KIKEN - REVERIE ON DIAMOND MOUNTAIN

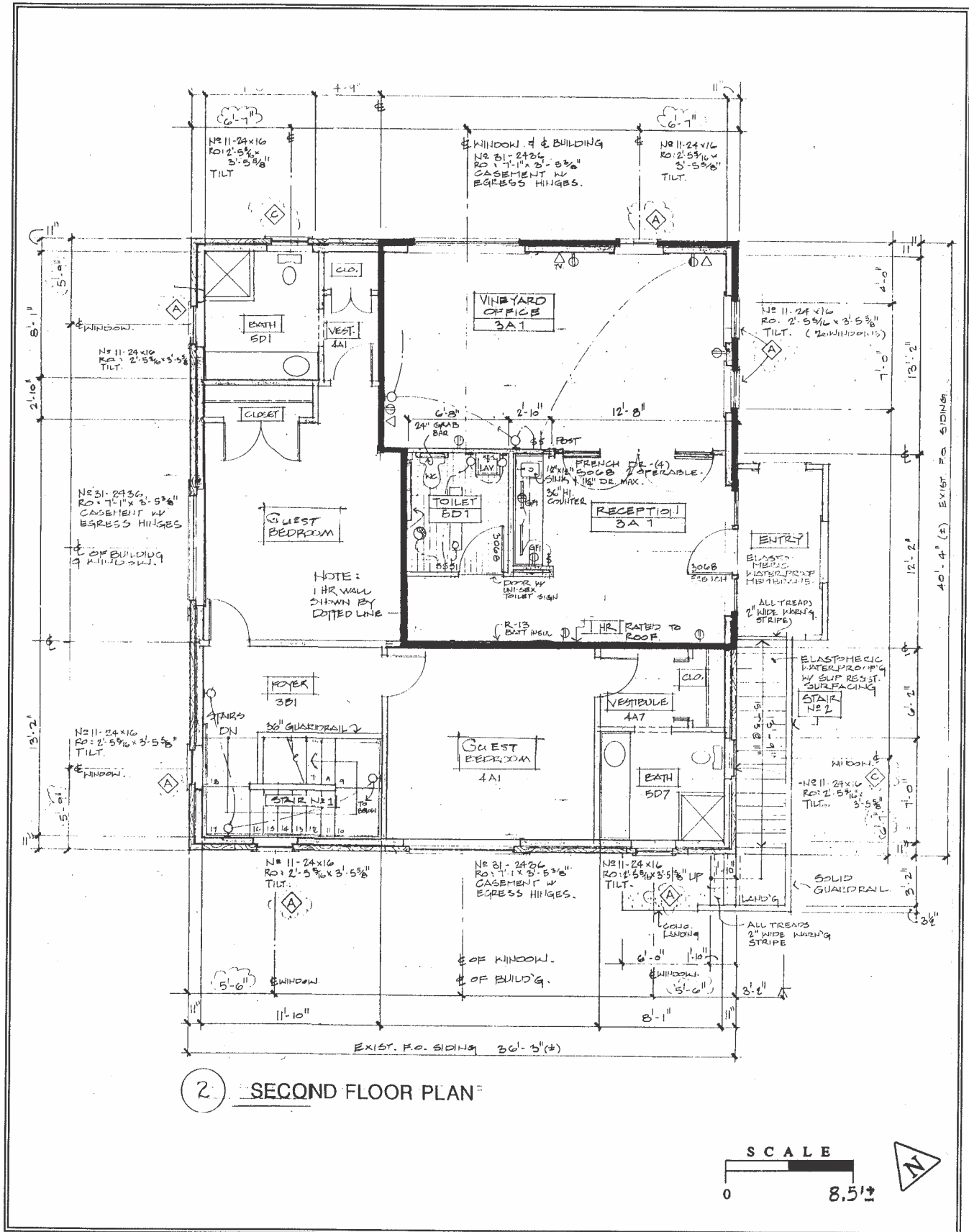


3-13-95 10B UP

First Floor Plan Approved per Use Permit 94254

REVERIE WINERY

KIKEN - REVERIE ON DIAMOND MOUNTAIN



Second Floor Plan Approved per Use Permit 94254

REVERIE WINERY



North Elevation per Use Permit 94254

REVERIE WINERY



South Elevation per Use Permit 94254

REVERIE WINERY



East Elevation per Use Permit 94254

REVERIE WINERY



West Elevation per Use Permit 94254