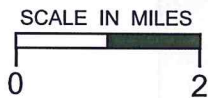
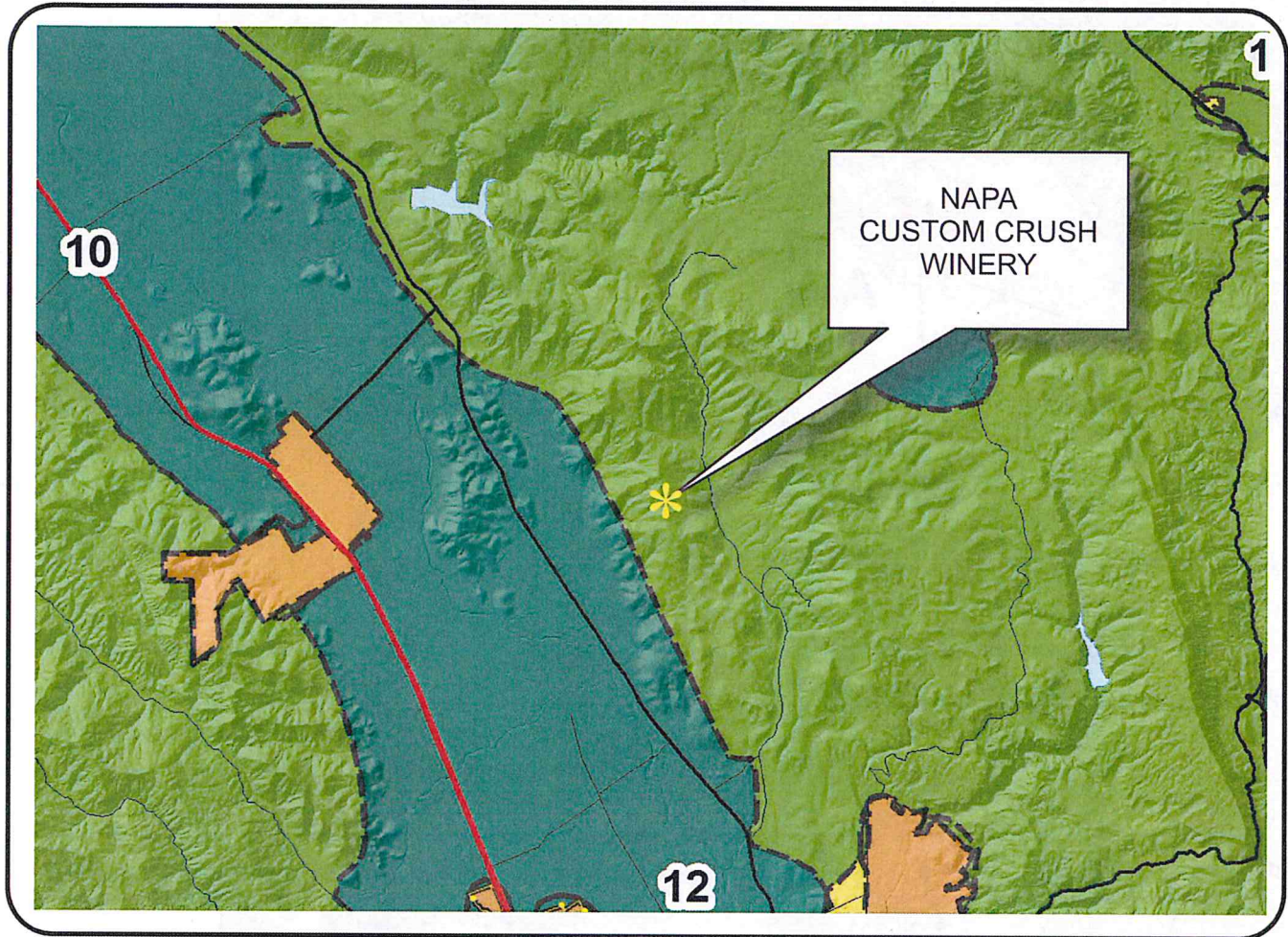


NAPA COUNTY LAND USE PLAN 2008 - 2030



LEGEND



URBANIZED OR NON-AGRICULTURAL

- Study Area
- Cities
- Urban Residential*
- Rural Residential*
- Industrial
- Public-Institutional
- Napa Pipe Mixed Use

OPEN SPACE

- Agriculture, Watershed & Open Space
- Agricultural Resource

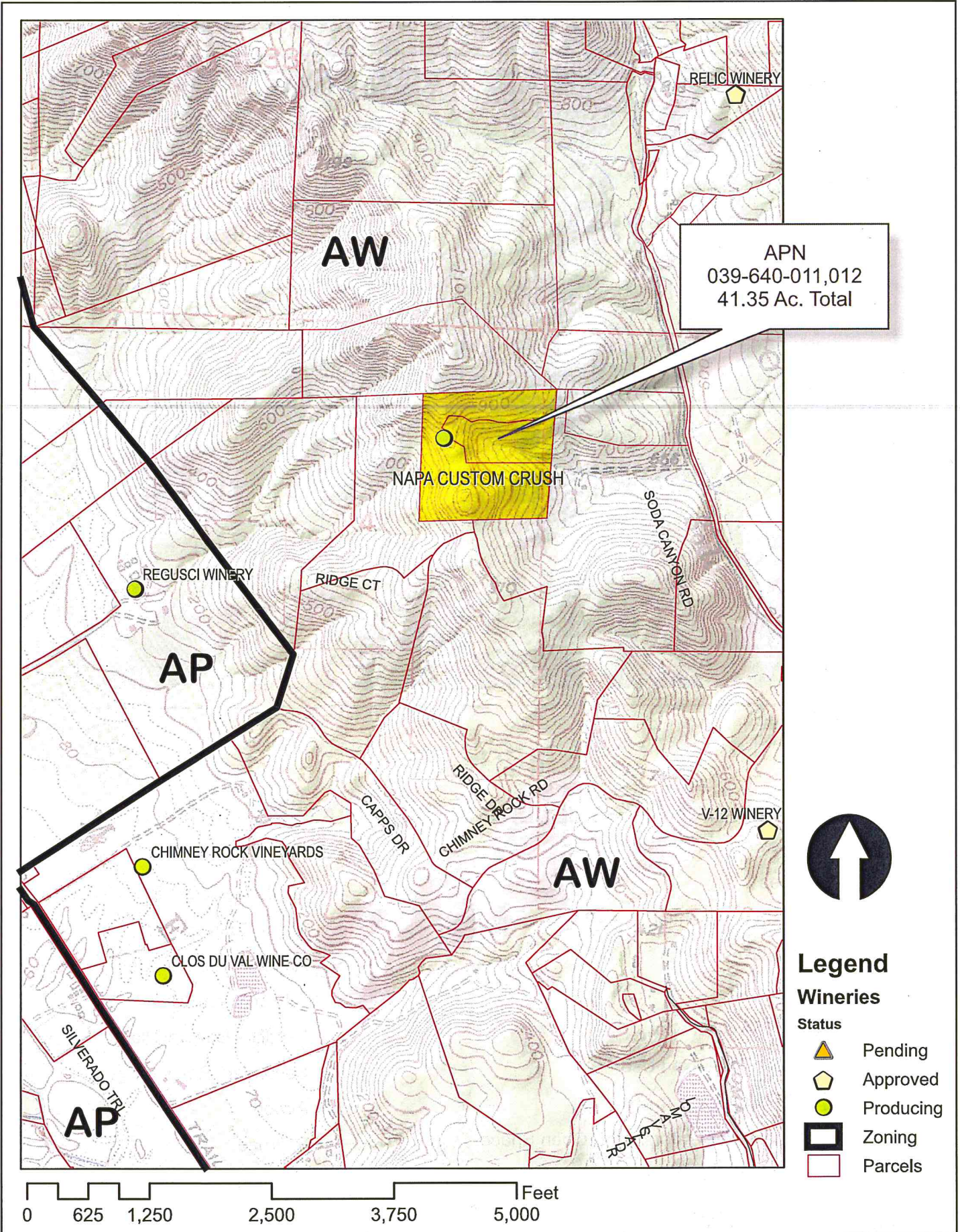
TRANSPORTATION

- Mineral Resource
- Limited Access Highway
- Major Road
- American Canyon ULL
- City of Napa RUL
- Landfill - General Plan
- Secondary Road
- Airport
- Railroad
- Airport Clear Zone

* See Action Item AG/LU-114.1 regarding agriculturally zoned areas within these land use designations

APN
039-640-011
03-25-2015
6D UP

NAPA CUSTOM CRUSH WINERY








APN
039-640-011,012
41.35 Ac. Total

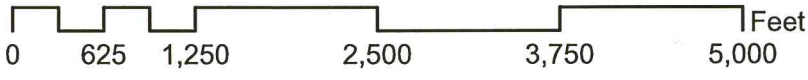


Legend

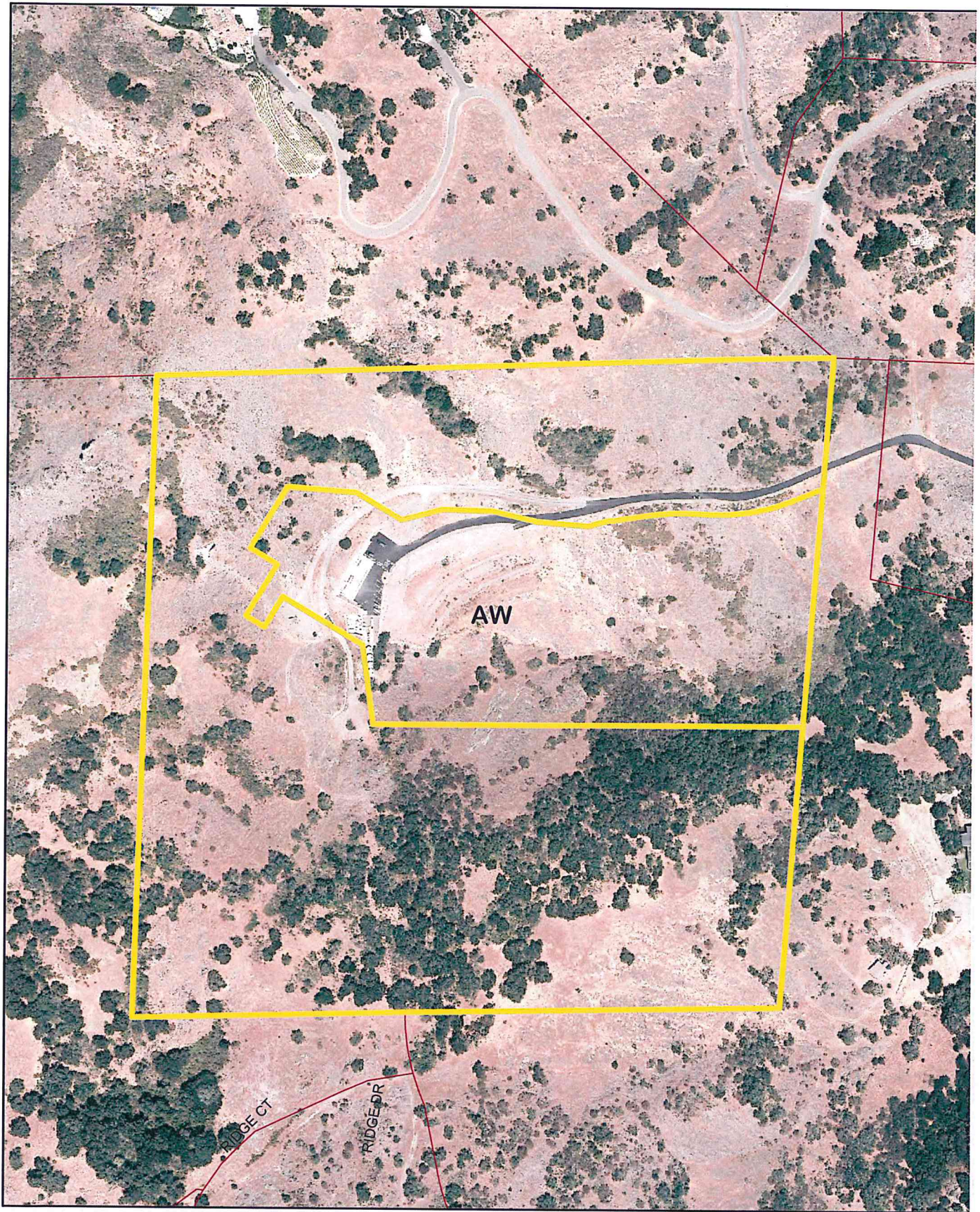
Wineries

Status

-  Pending
-  Approved
-  Producing
-  Zoning
-  Parcels



NAPA CUSTOM CRUSH WINERY



0 130 260 520 780 1,040 Feet

Existing Conditions

03-25-2015

6D

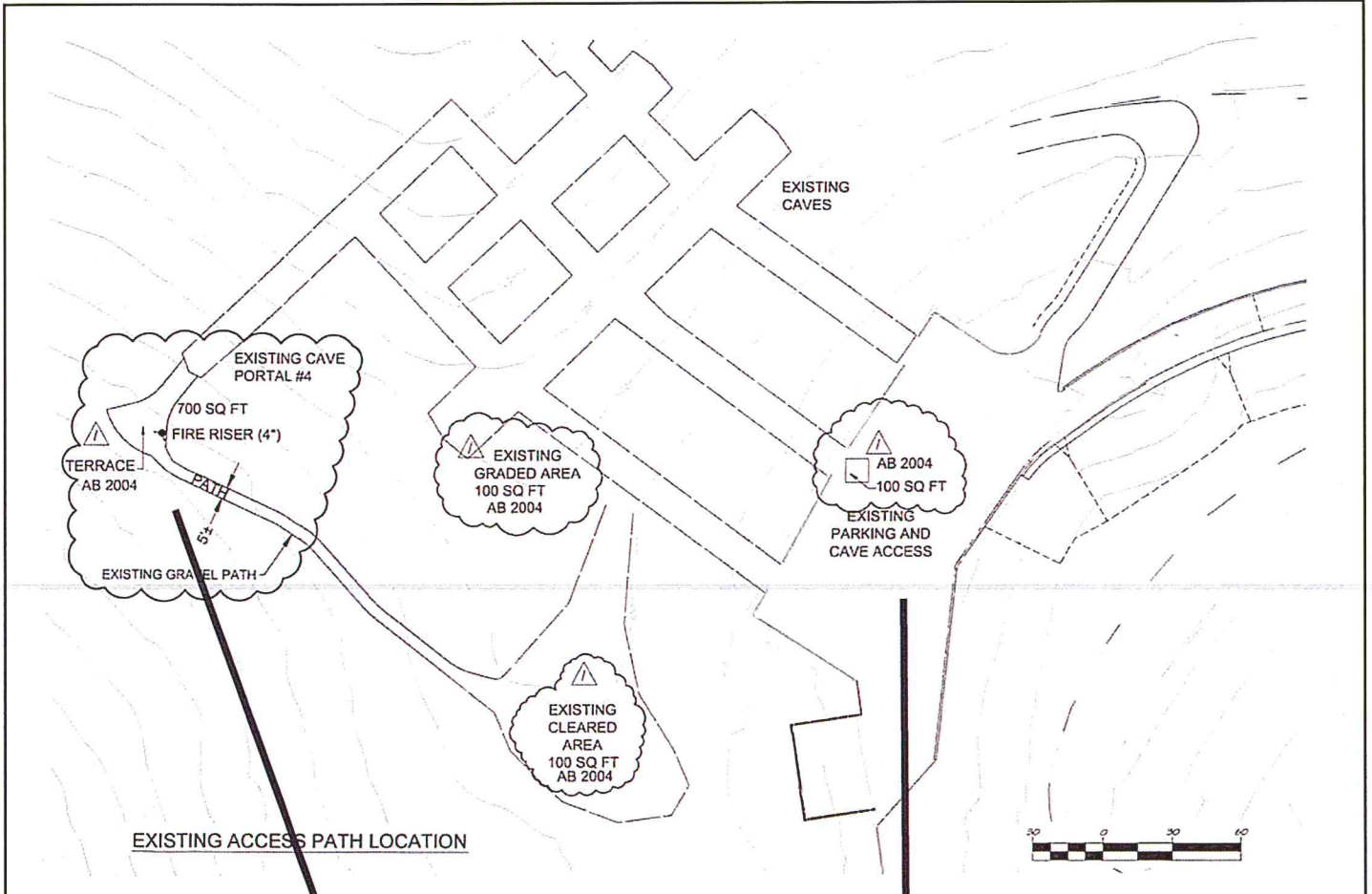
UP

03

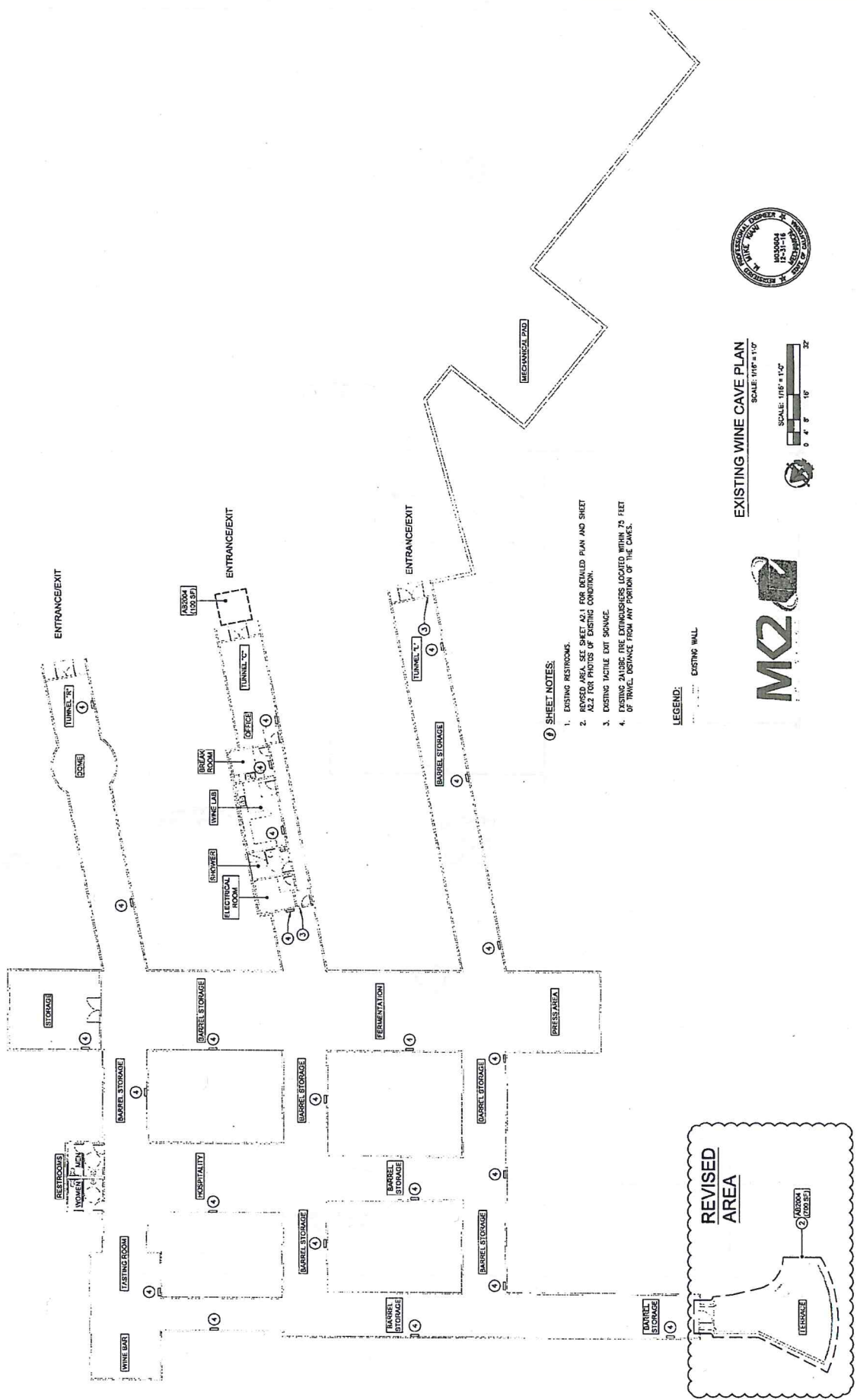
Napa County Conservation
Development and Planning Department

NapaCustomCrush_up1.cdr

NAPA CUSTOM CRUSH WINERY



NAPA CUSTOM CRUSH WINERY



- ④ SHEET NOTES:**
- EXISTING RESTROOMS.
 - RESTROOMS. SEE SHEET A-1 FOR ACTUAL PLAN AND SHEET A-2.2 FOR PHOTOS OF EXISTING CONDITION.
 - EXISTING TACTILE EXIT SIGNAGE.
 - EXISTING ZATOSC DIE EXTINGUISHERS LOCATED WITHIN 75 FEET OF TUNNEL SIGNAGE FROM ANY PORTION OF THE CAVE.

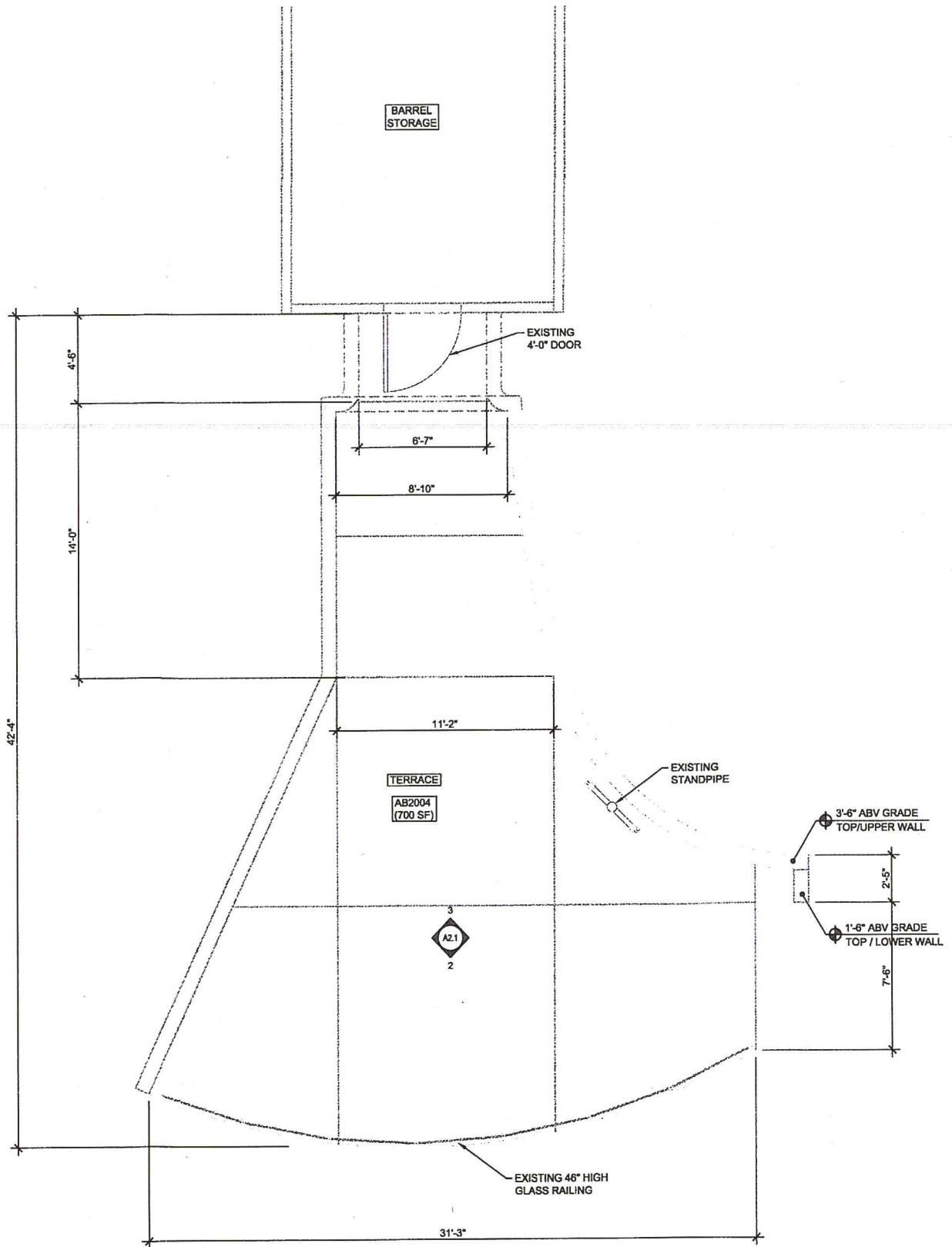
LEGEND:
 --- EXISTING WALL



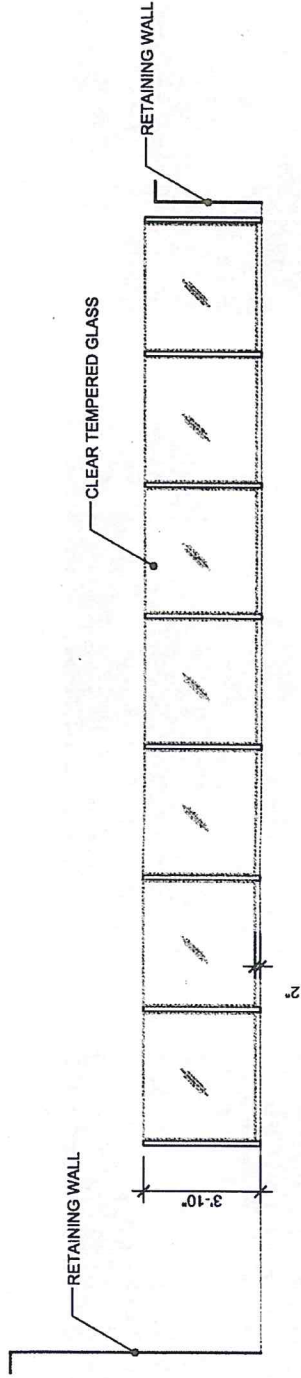
EXISTING WINE CAVE PLAN
 SCALE: 1/16" = 1'-0"
 0 4 8 16 32



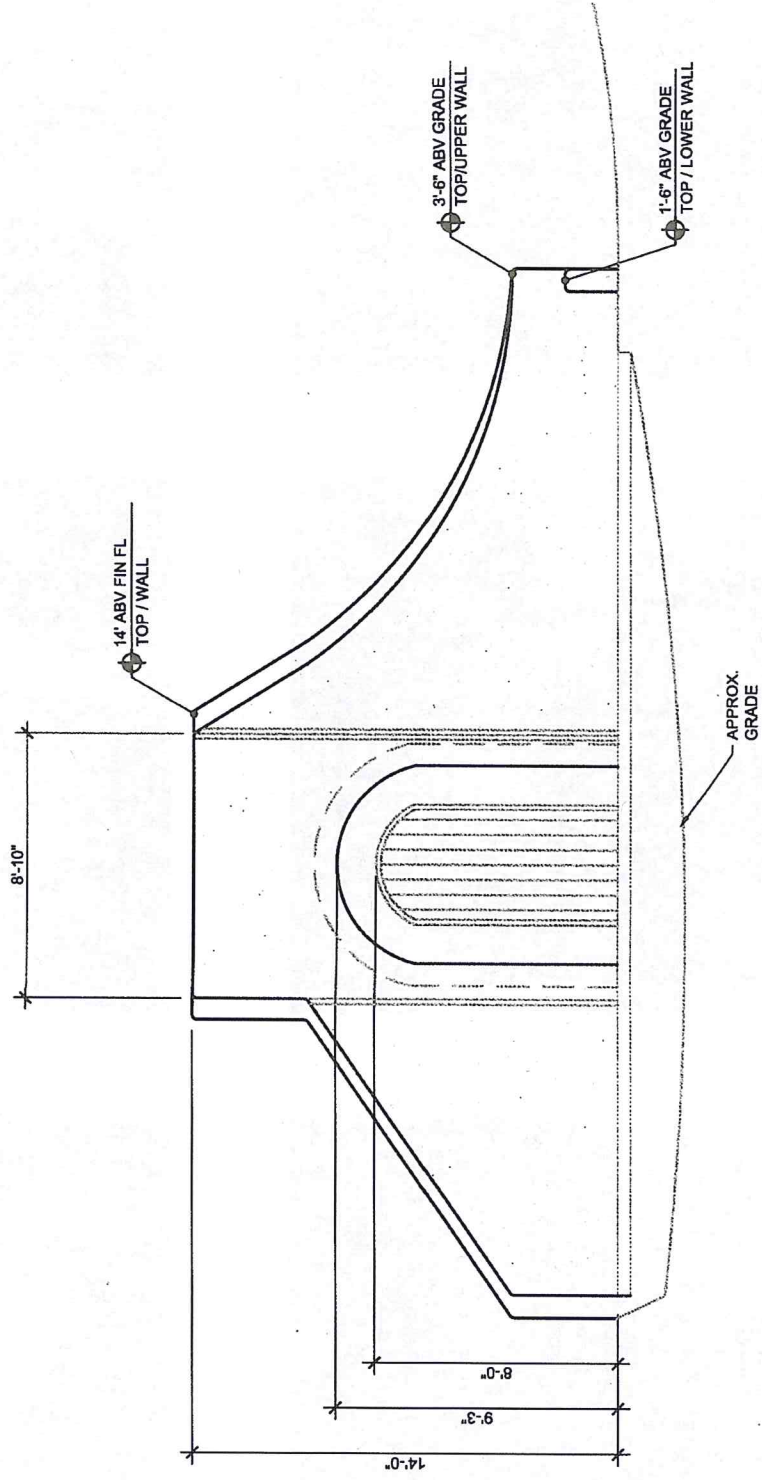
NAPA CUSTOM CRUSH WINERY



NAPA CUSTOM CRUSH WINERY

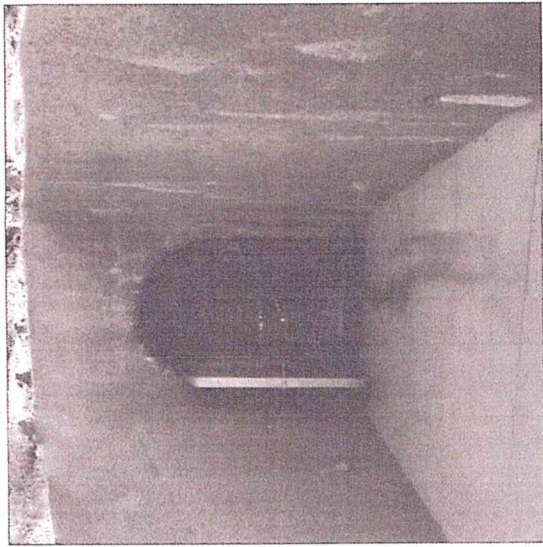


ELEVATION - LOOKING WEST TOWARD GLASS RAILING

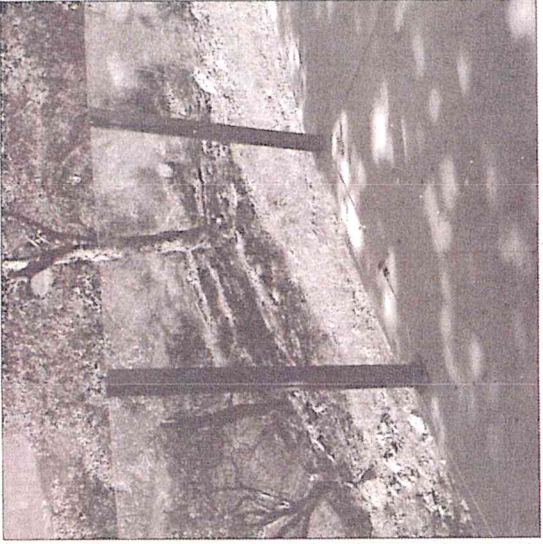


ELEVATION - VIEW TOWARD DOOR TO CAVE PORTAL

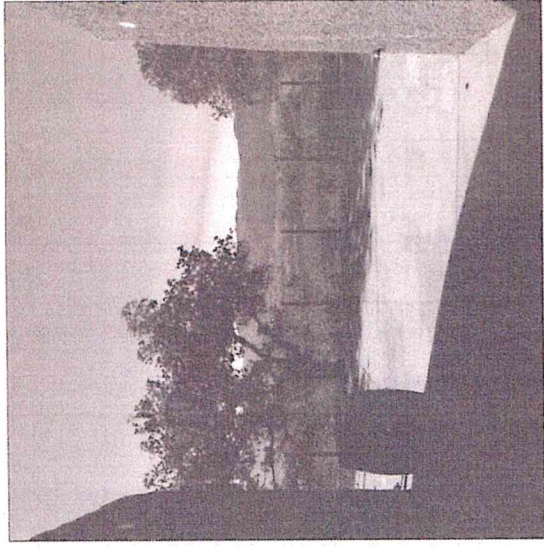
NAPA CUSTOM CRUSH WINERY



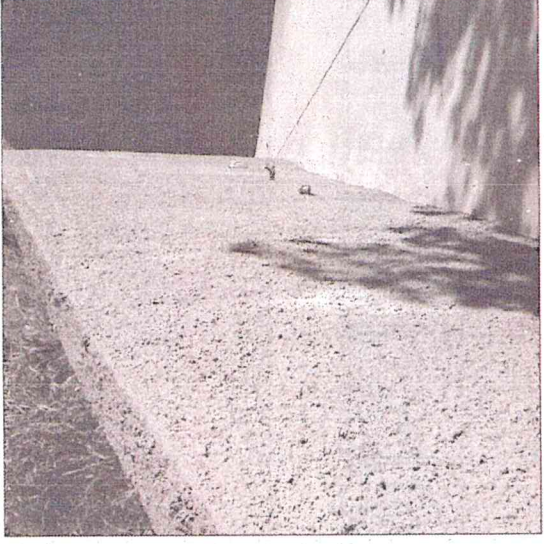
DOOR TO CAVES FROM TERRACE



GLASS BALCONY



VIEW OF TERRACE FROM CAVE DOOR



WALL FINISH - SHIPBOURNE - NATURAL

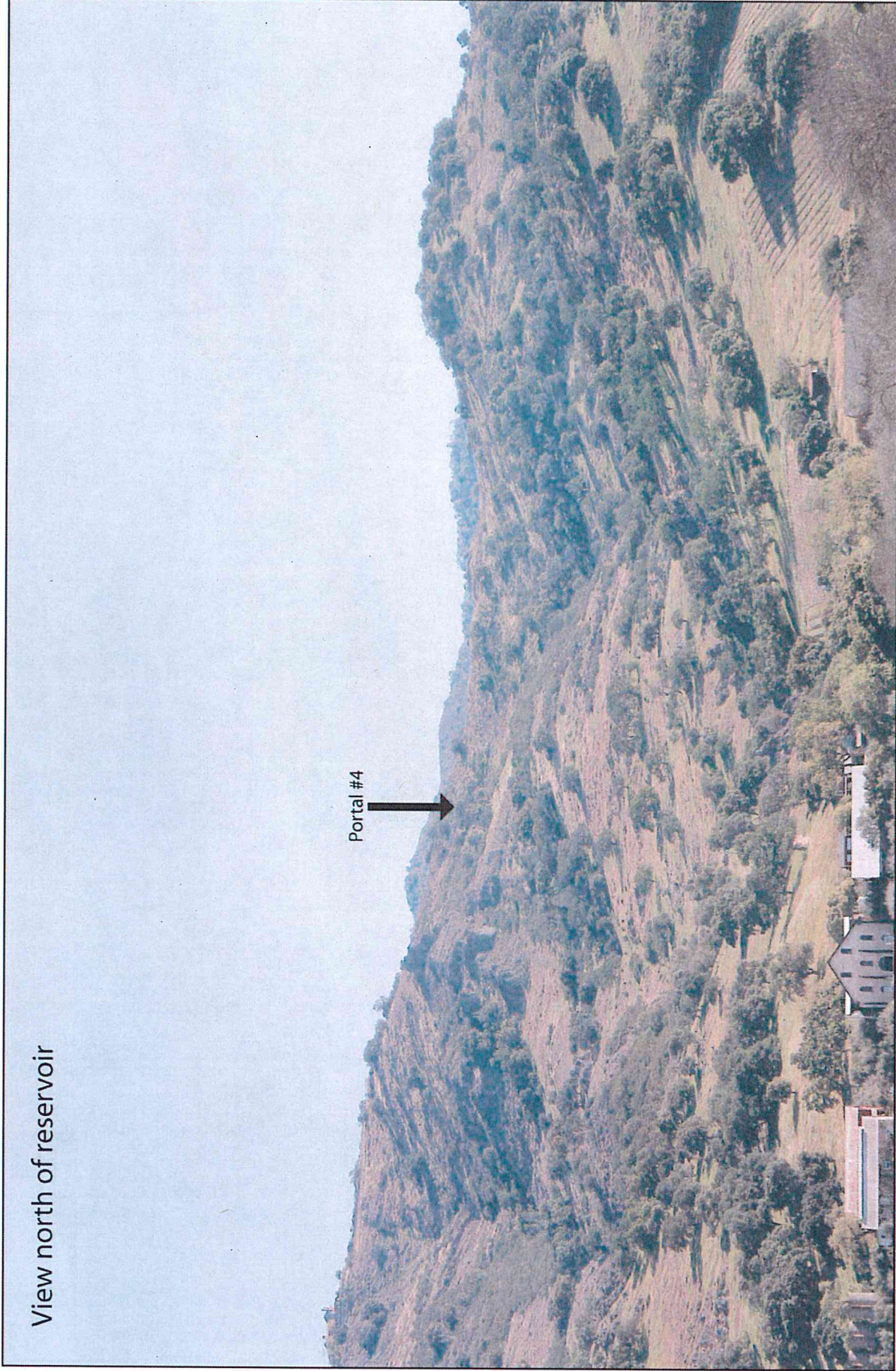


EXIT PATHWAY THROUGH BARREL STORAGE



ALCOVE AT ENTRANCE TO CAVE PORTAL

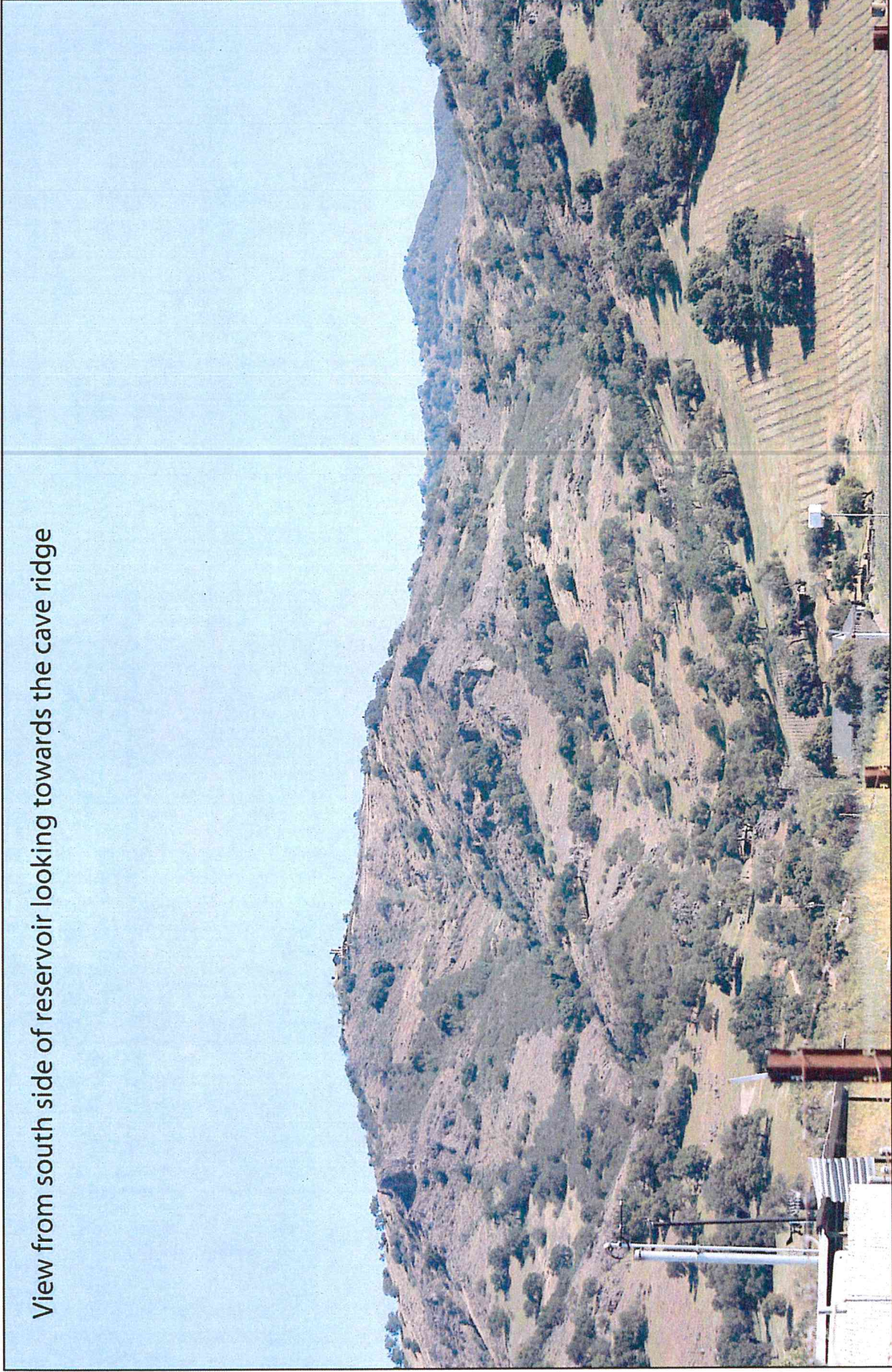
NAPA CUSTOM CRUSH WINERY



View north of reservoir

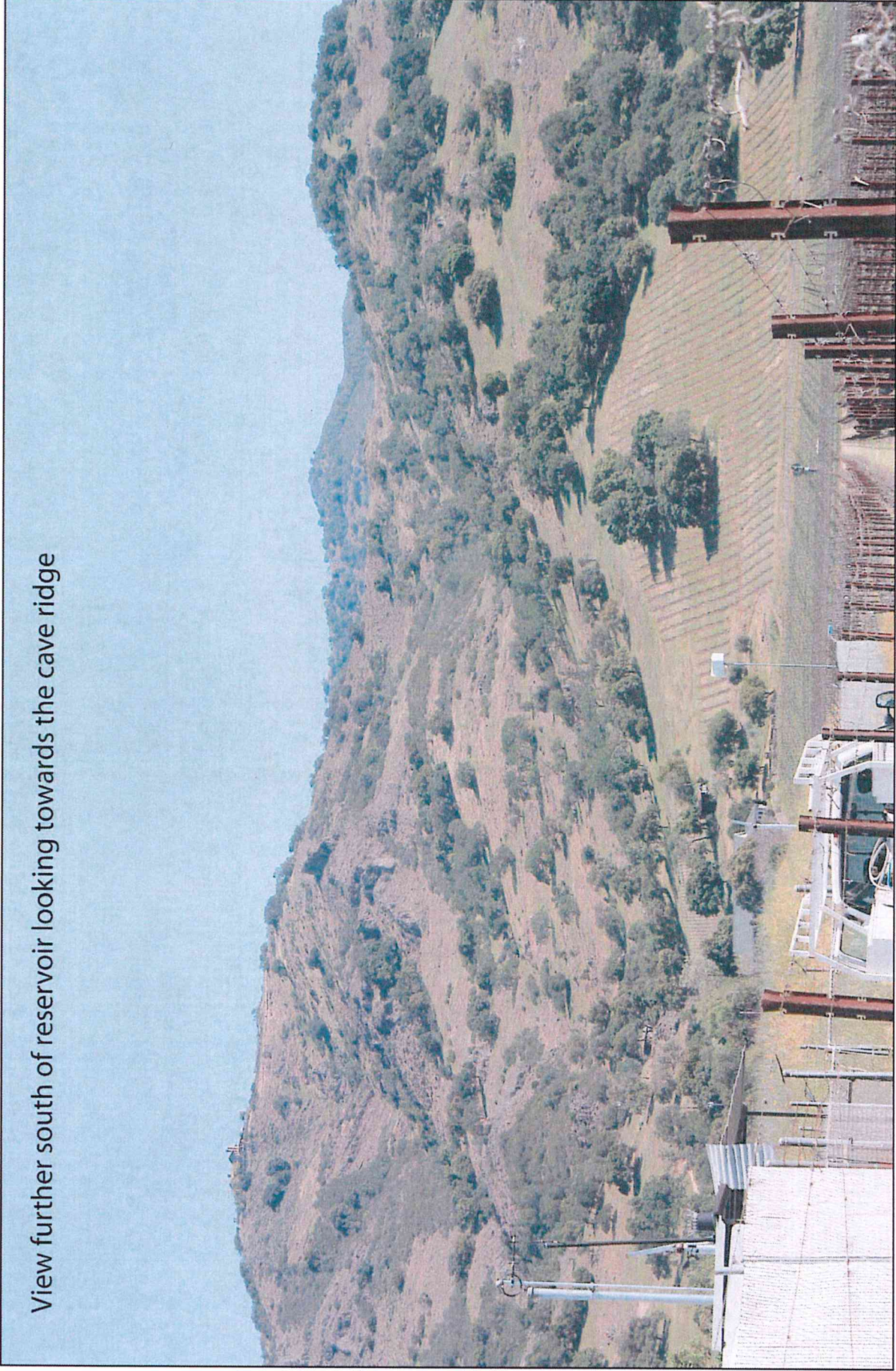
NAPA CUSTOM CRUSH WINERY

View from south side of reservoir looking towards the cave ridge



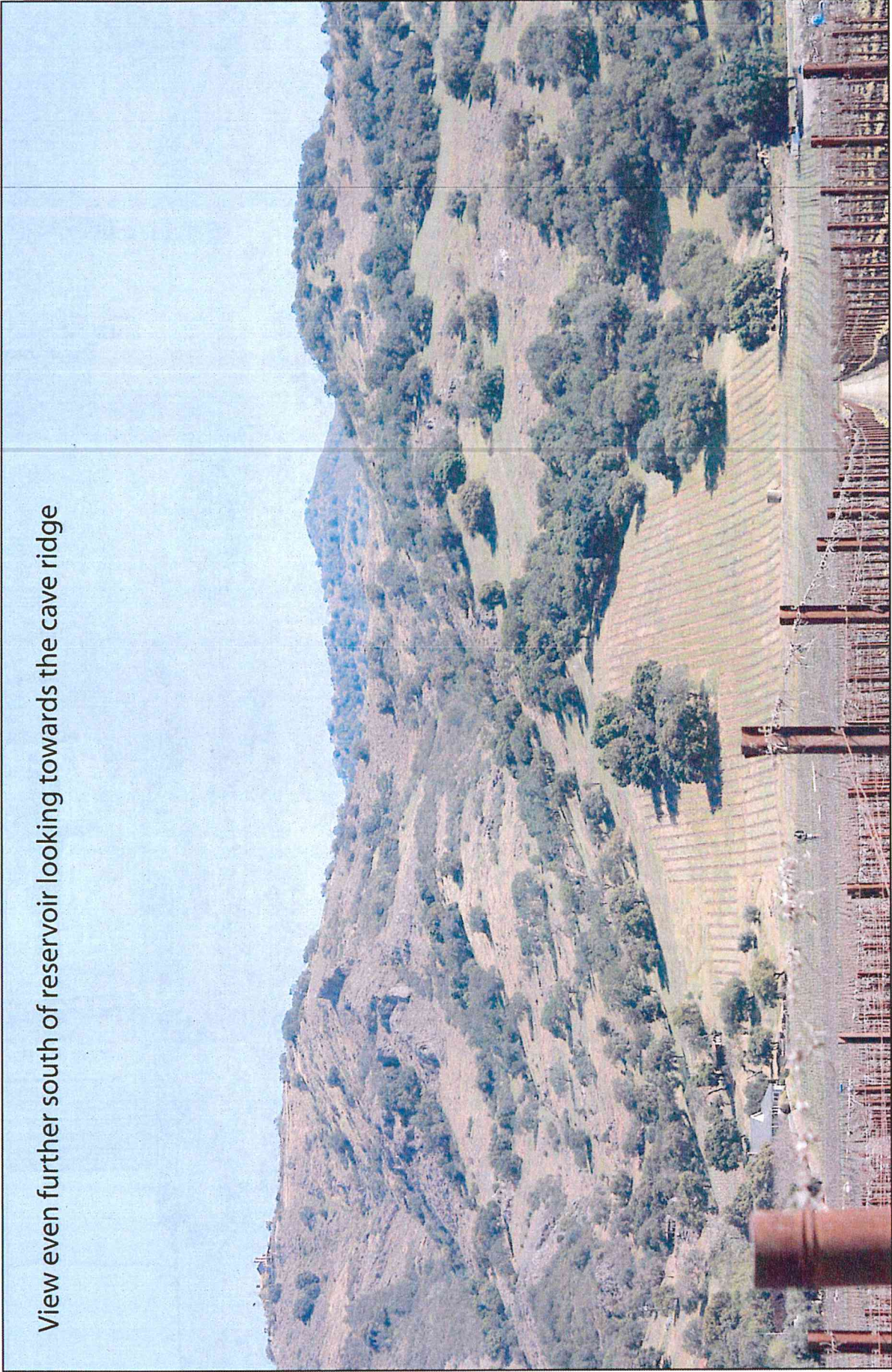
NAPA CUSTOM CRUSH WINERY

View further south of reservoir looking towards the cave ridge



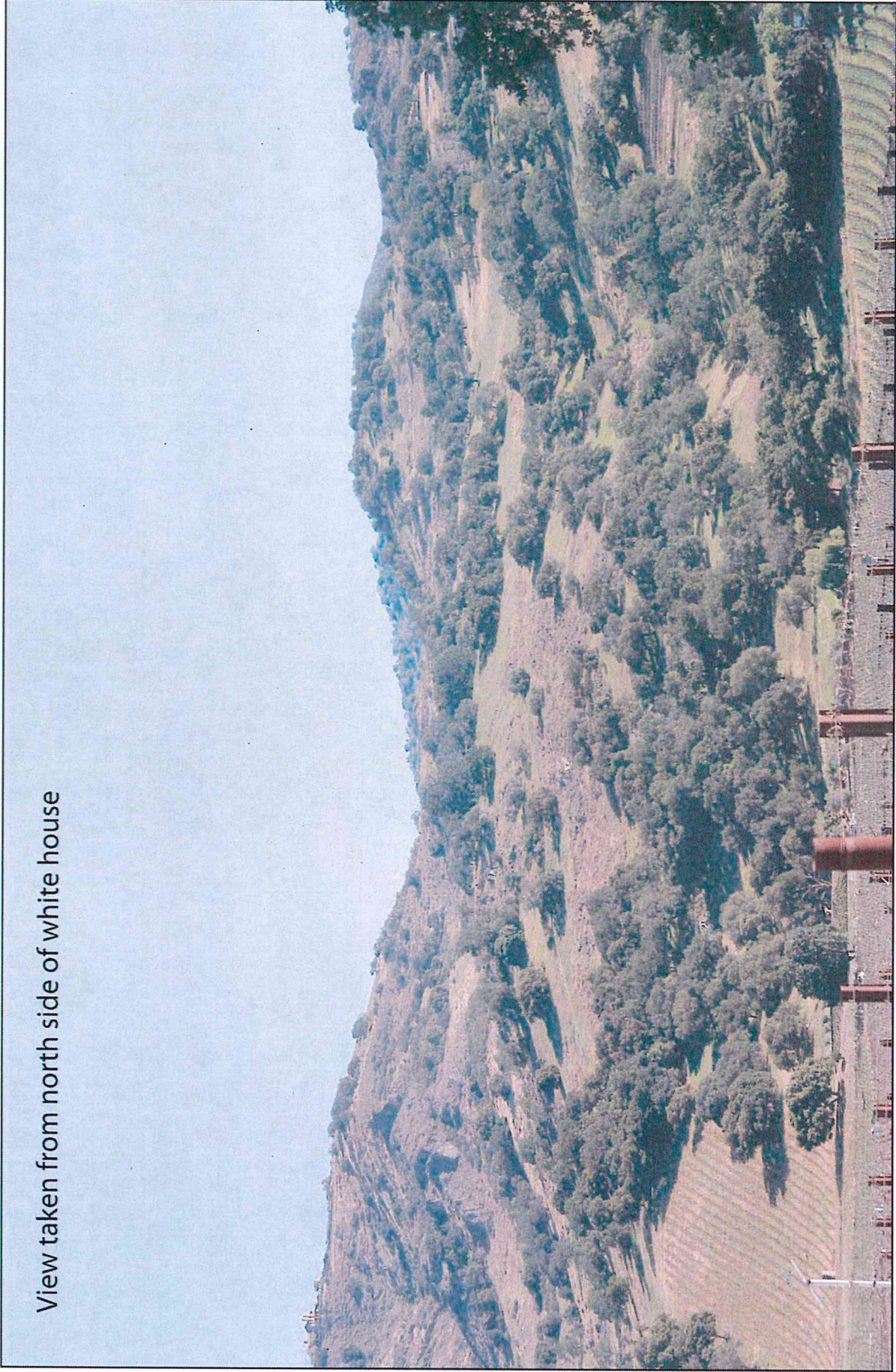
NAPA CUSTOM CRUSH WINERY

View even further south of reservoir looking towards the cave ridge



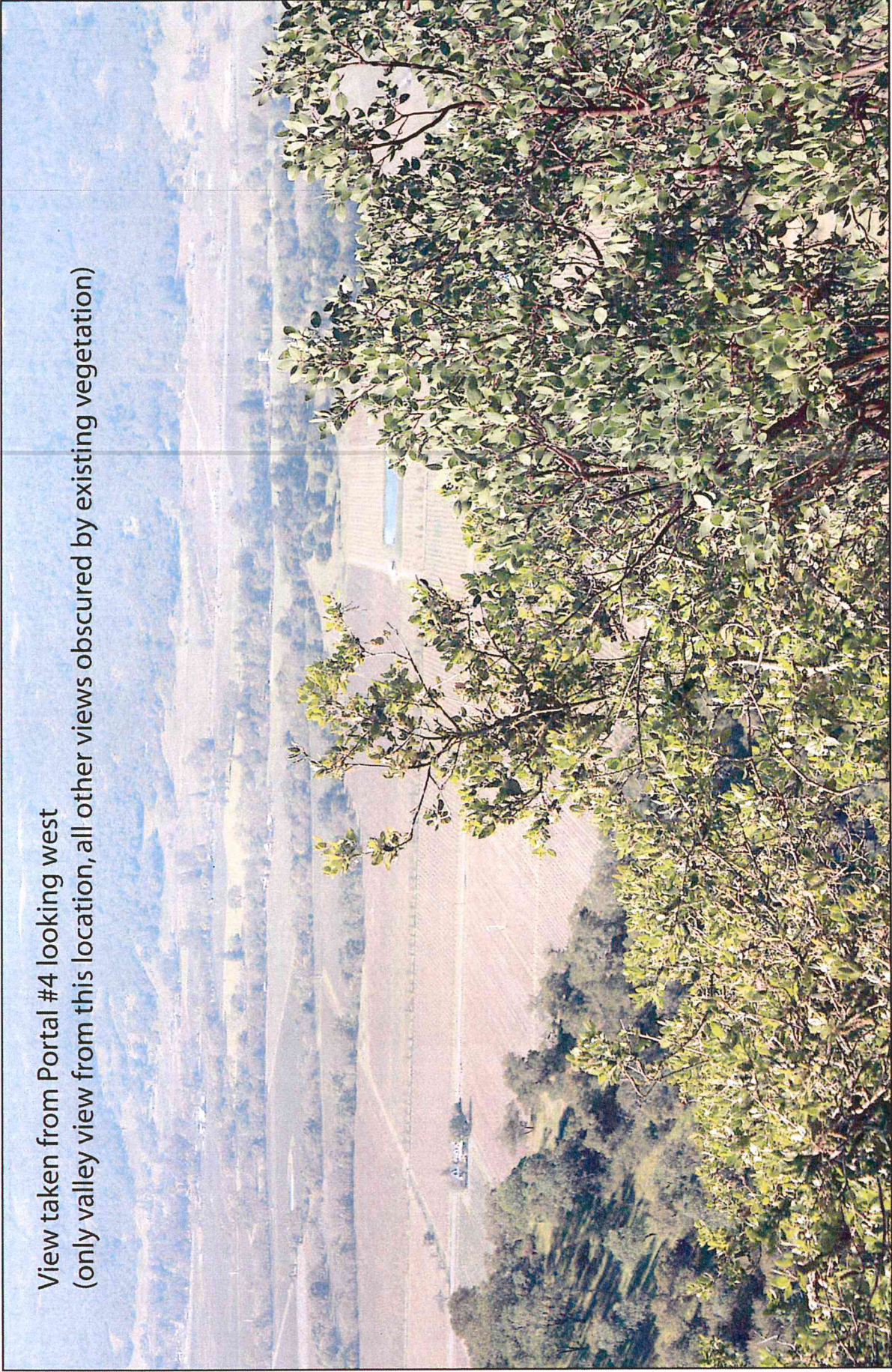
NAPA CUSTOM CRUSH WINERY

View taken from north side of white house



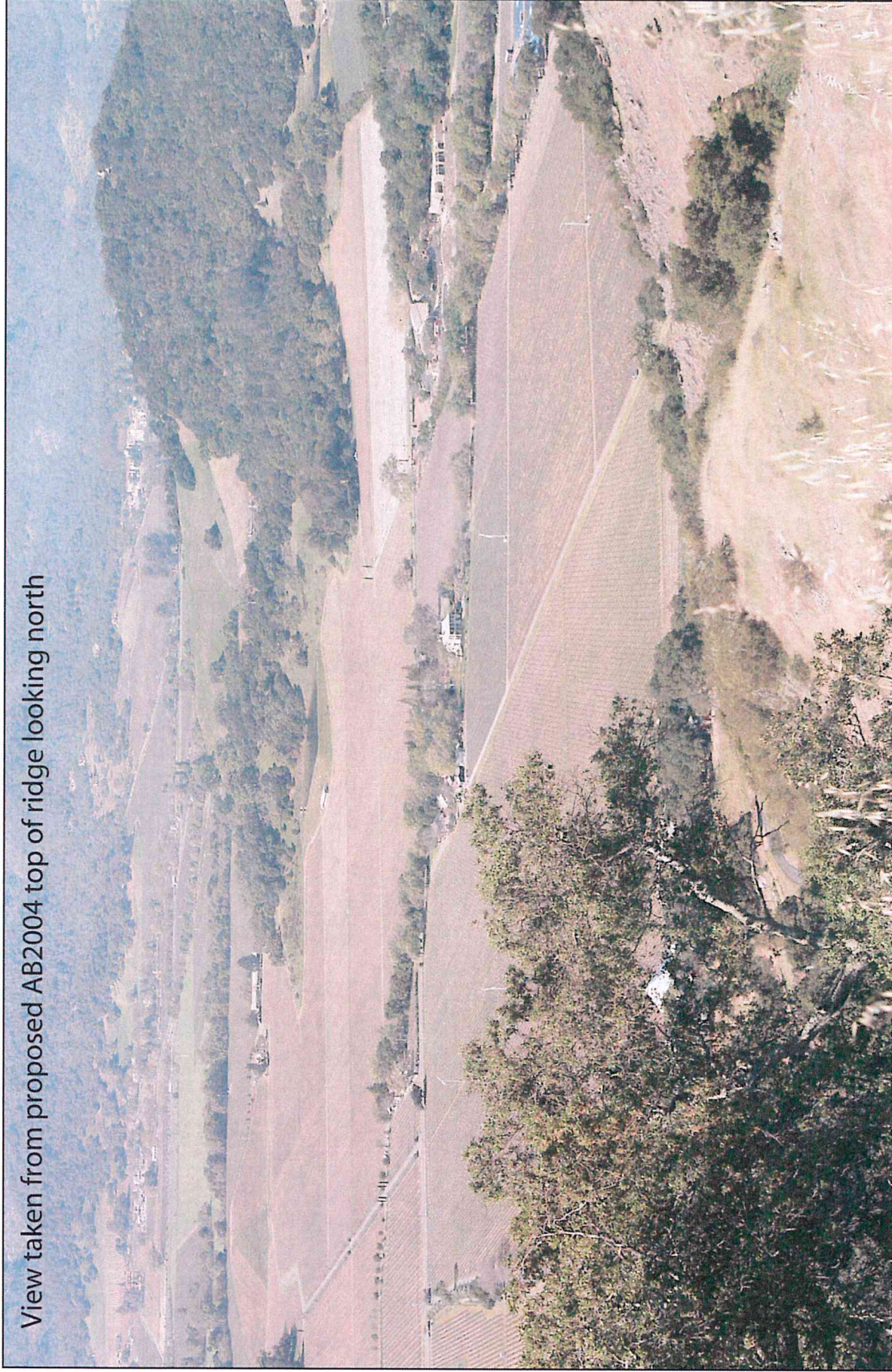
NAPA CUSTOM CRUSH WINERY

View taken from Portal #4 looking west
(only valley view from this location, all other views obscured by existing vegetation)



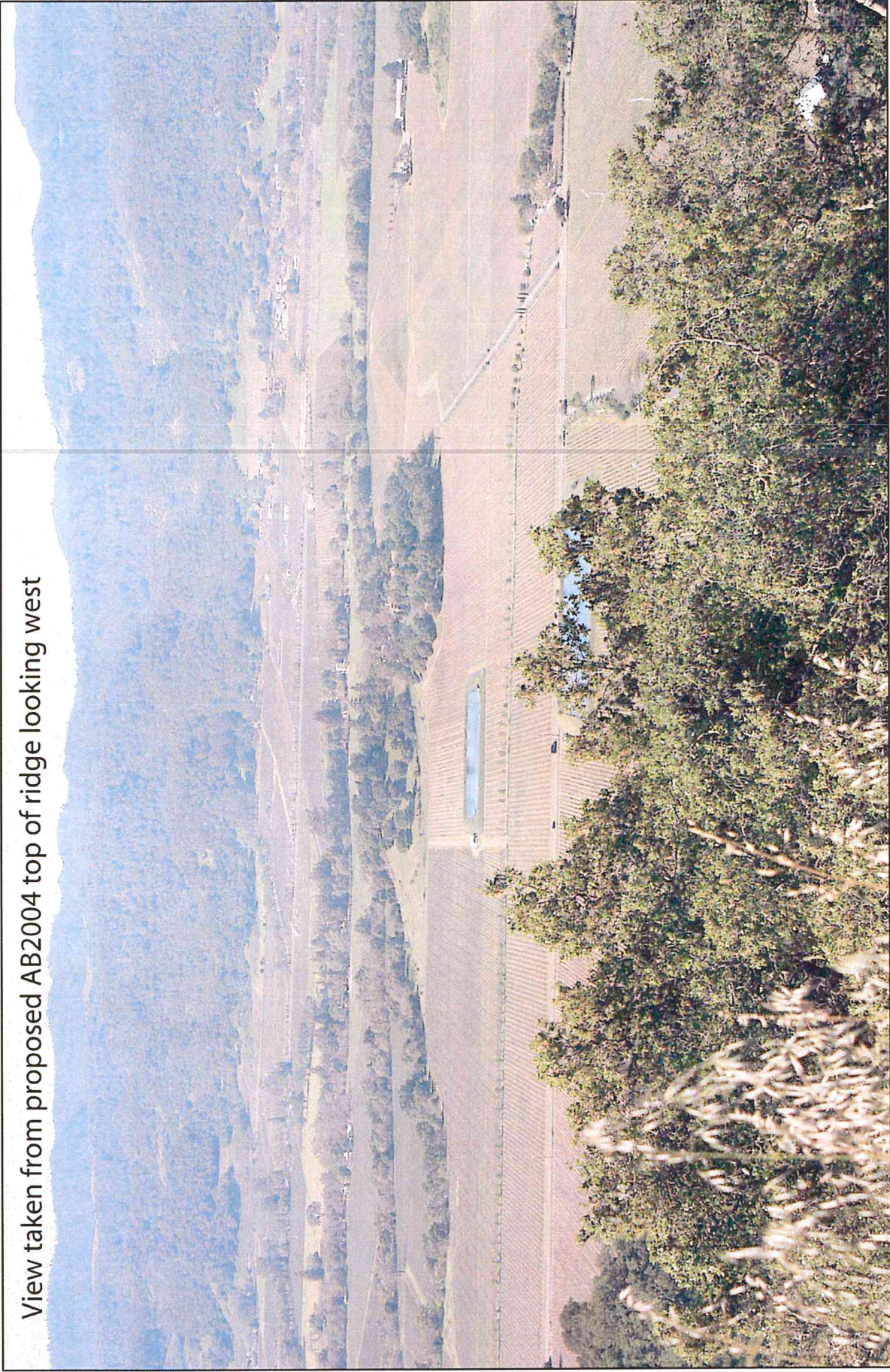
NAPA CUSTOM CRUSH WINERY

View taken from proposed AB2004 top of ridge looking north



NAPA CUSTOM CRUSH WINERY

View taken from proposed AB2004 top of ridge looking west



NAPA CUSTOM CRUSH WINERY

View taken from proposed AB2004 top of ridge looking southwest

