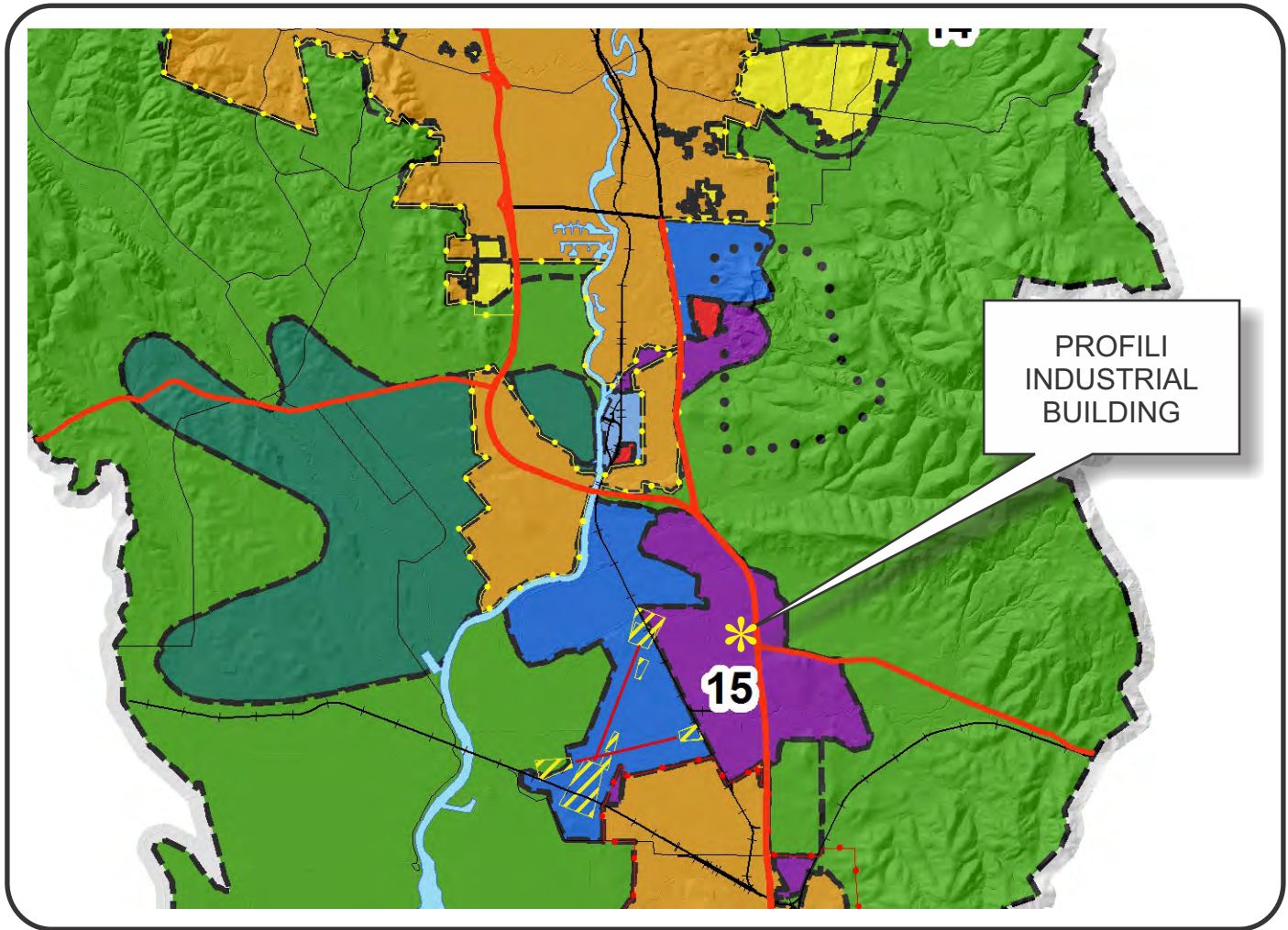


NAPA COUNTY LAND USE PLAN 2008 - 2030



LEGEND



URBANIZED OR NON-AGRICULTURAL

- Study Area
- Cities
- Urban Residential*
- Rural Residential*
- Industrial
- Public-Institutional
- Napa Pipe Mixed Use

OPEN SPACE

- Agriculture, Watershed & Open Space
- Agricultural Resource

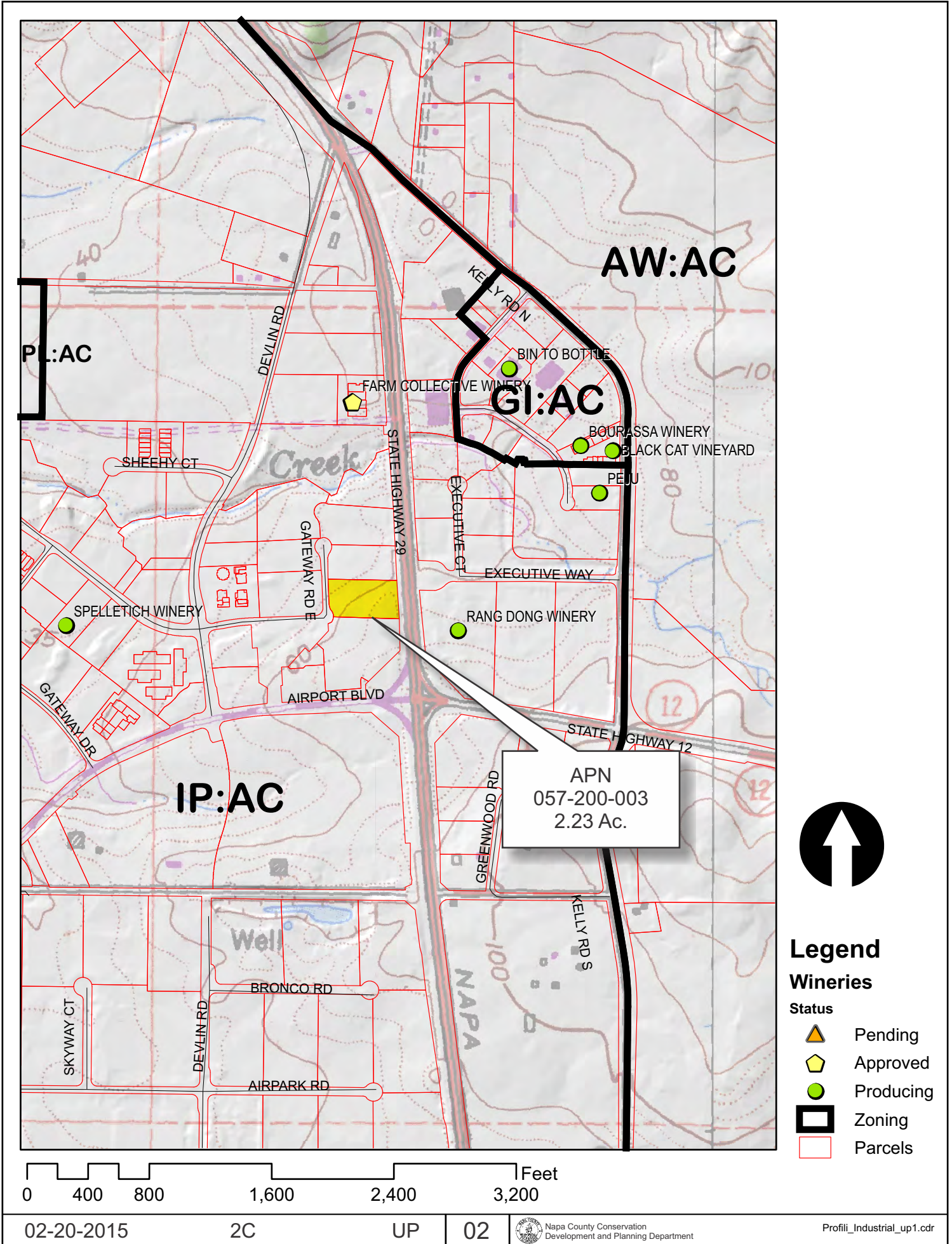
TRANSPORTATION

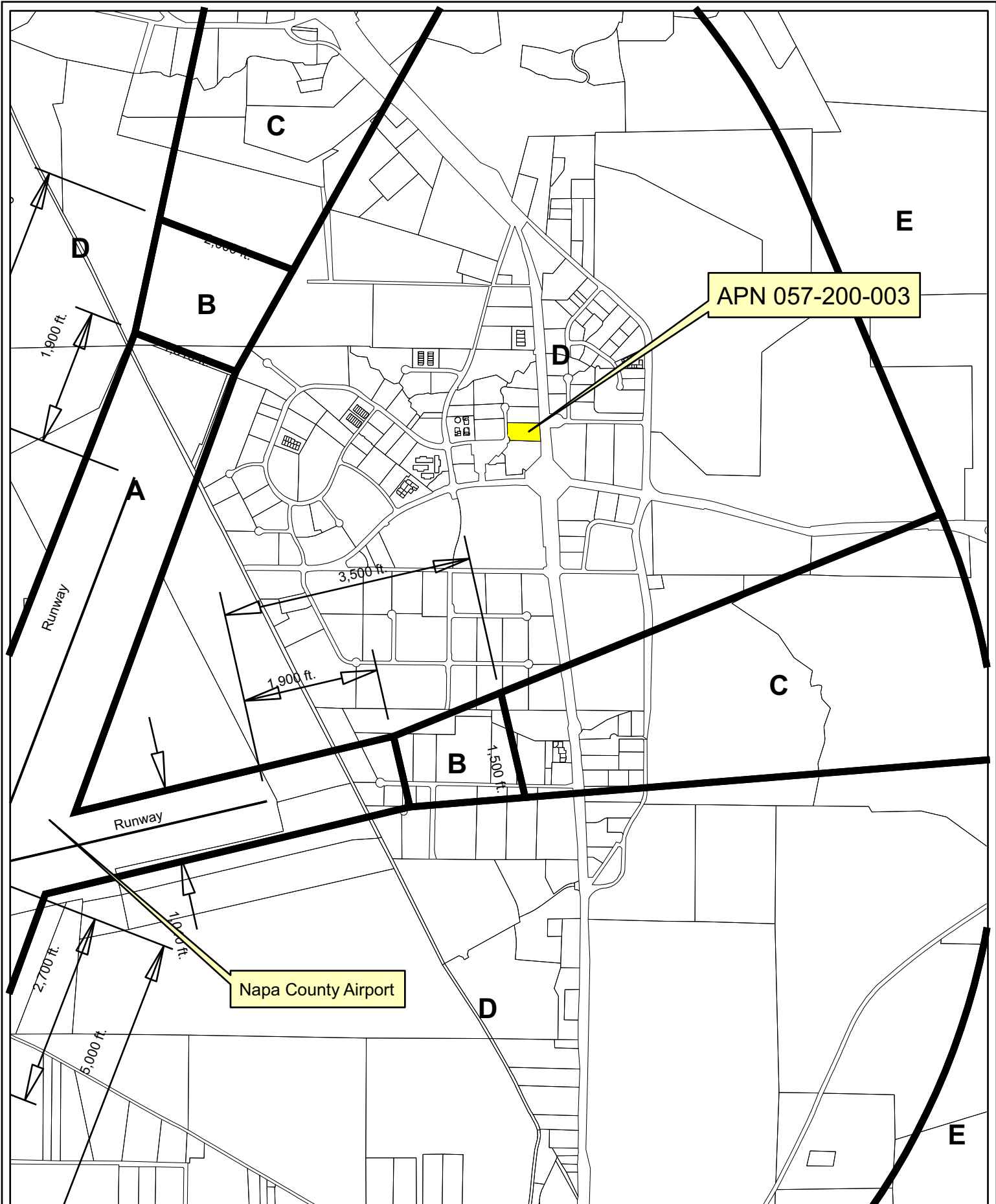
- Mineral Resource
- Limited Access Highway
- Major Road
- American Canyon ULL
- City of Napa RUL
- Landfill - General Plan
- Secondary Road
- Airport
- Railroad
- Airport Clear Zone

* See Action Item AG/LU-114.1 regarding agriculturally zoned areas within these land use designations

APN
057-200-003
02-20-2015
2C UP

PROFILI INDUSTRIAL BUILDING





APN 057-200-003

Napa County Airport

Compatibility Plan Napa County Airport

Horizontal Datum: NAD 83,
CA State Plane Coordinates,
Zone II, feet

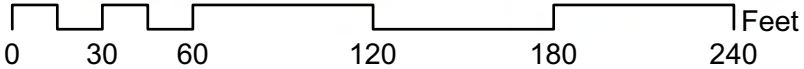


0 445 890 1,780'

Disclaimer: This map was prepared for informational purposes only. No liability is assumed for the accuracy of the data delineated herein.

Napa County P.B.E.S. - 03/2015

PROFILI INDUSTRIAL BUILDING

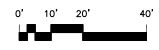
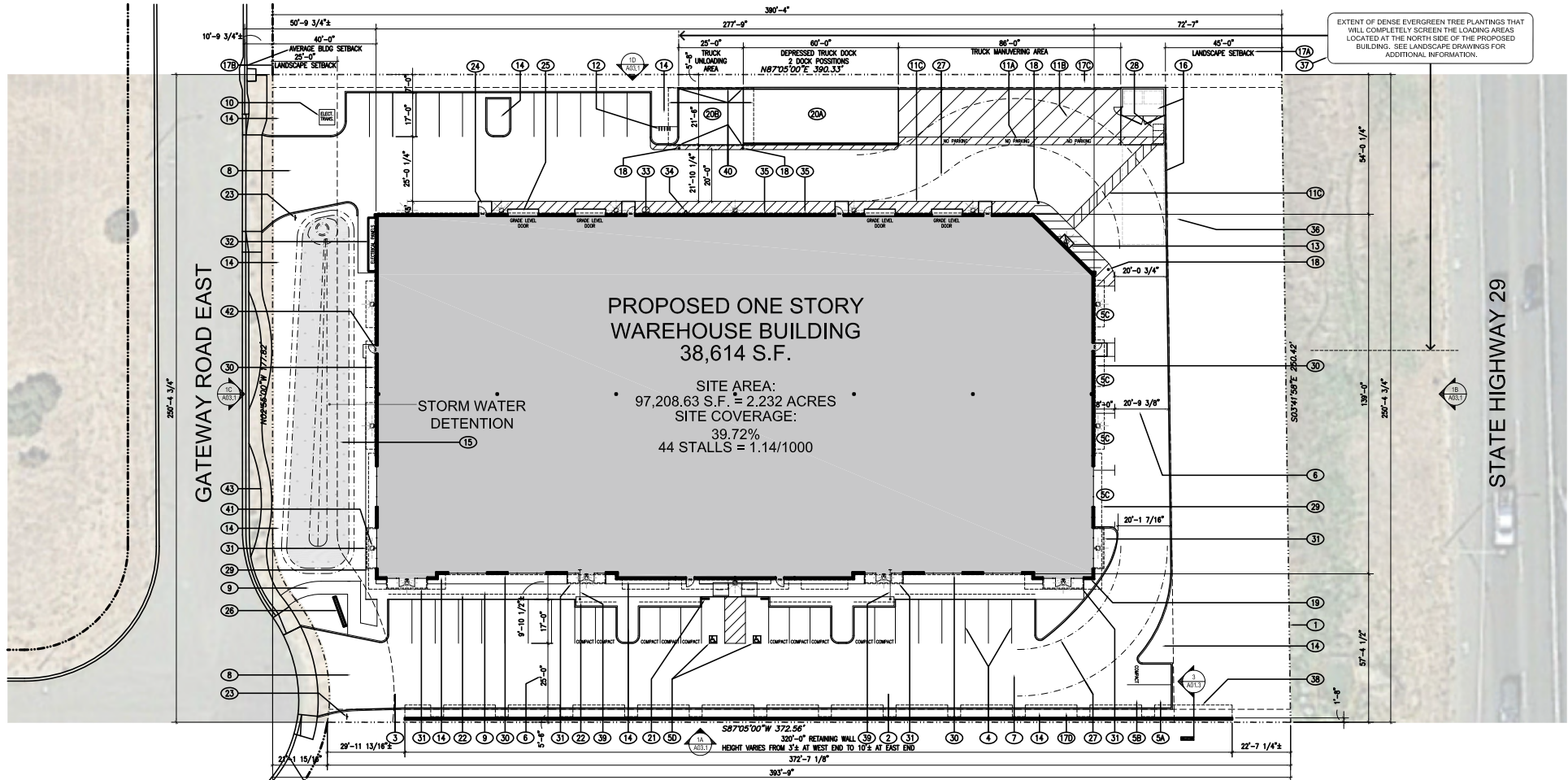


Existing Conditions

PROFILI INDUSTRIAL BUILDING



EXTENT OF DENSE EVERGREEN TREE PLANTINGS THAT WILL COMPLETELY SCREEN THE LOADING AREAS LOCATED AT THE NORTH SIDE OF THE PROPOSED BUILDING. SEE LANDSCAPE DRAWINGS FOR ADDITIONAL INFORMATION.



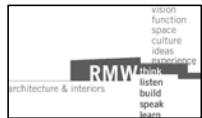
PRELIMINARY SITE PLAN & FLOOR PLAN
SCALE: 1" = 20'-0"

1



LOT 3
NAPA AIRPORT INDUSTRIAL PARK

PROFILI INDUSTRIAL BUILDING



PRELIMINARY FLOOR PLAN

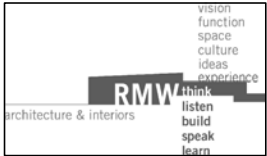
1

PROFILI INDUSTRIAL BUILDING

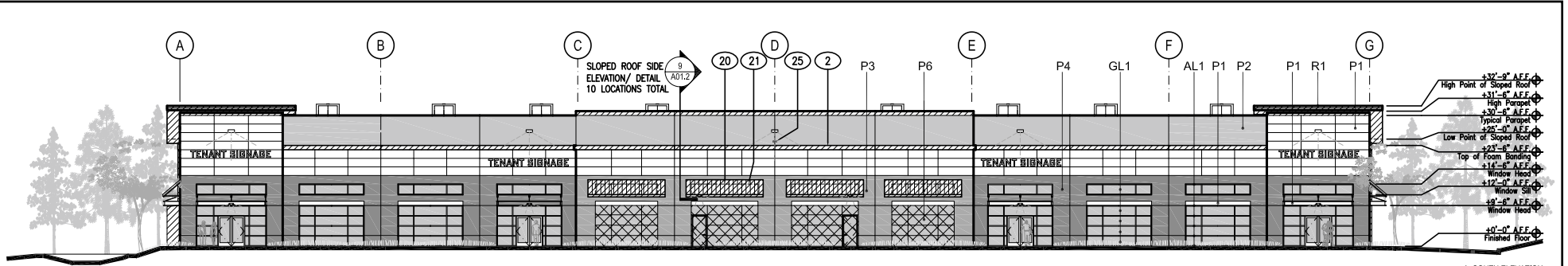
PROFILI INDUSTRIAL BUILDING



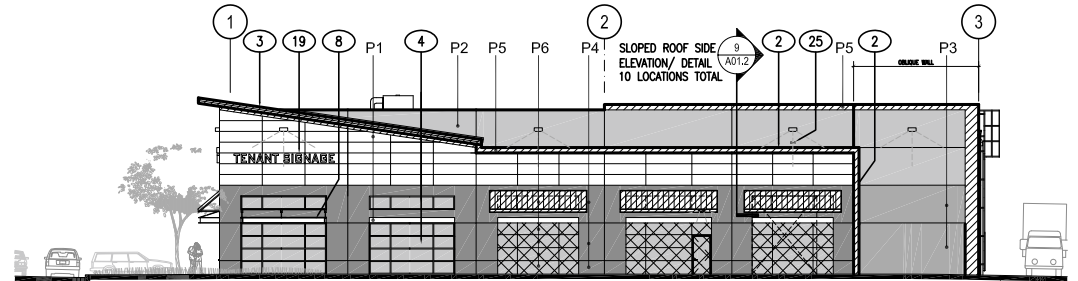
PERSPECTIVE VIEW LOOKING NORTH EAST AS SEEN FROM GATEWAY ROAD EAST



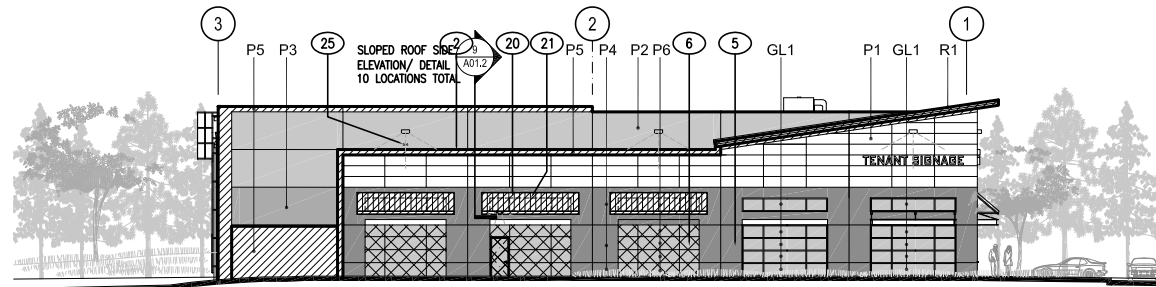
PROFILI INDUSTRIAL BUILDING



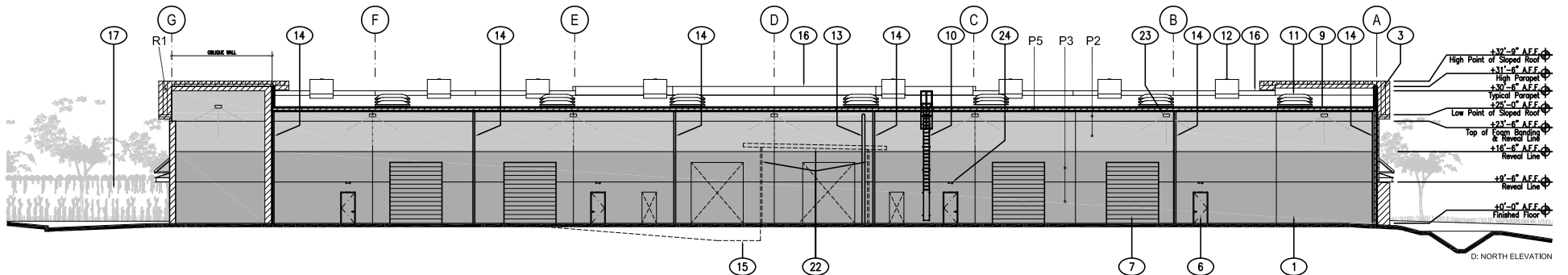
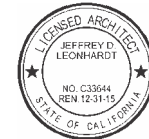
A: SOUTH ELEVATION



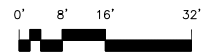
B: EAST ELEVATION



C: WEST ELEVATION



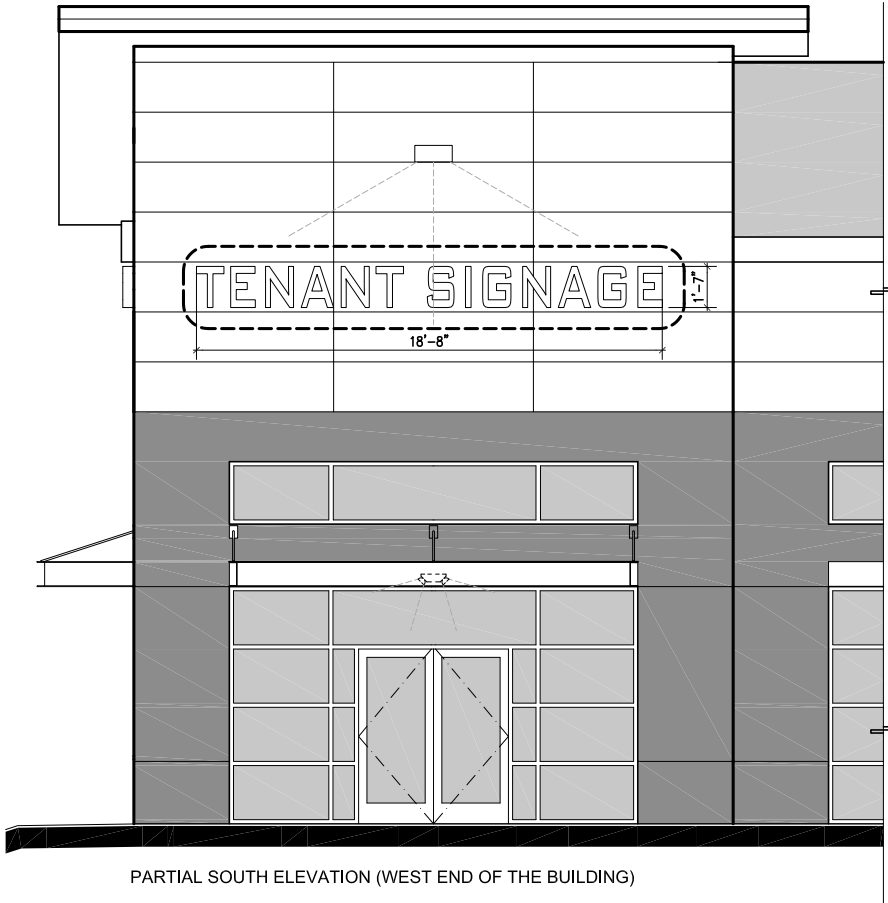
D: NORTH ELEVATION



PRELIMINARY EXTERIOR ELEVATIONS

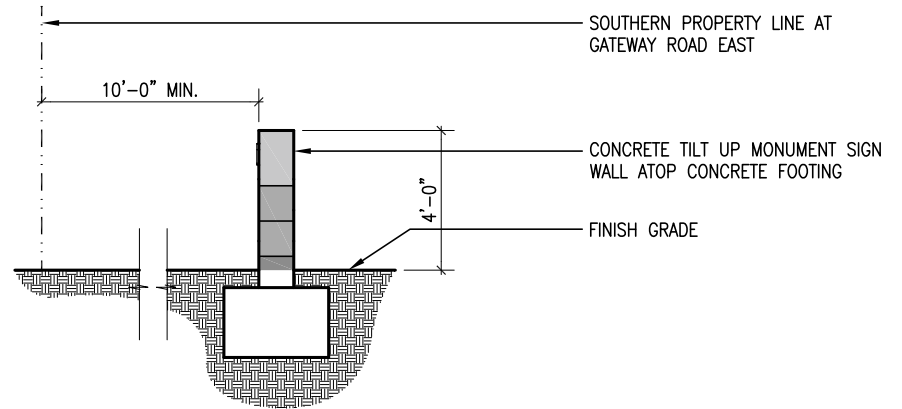
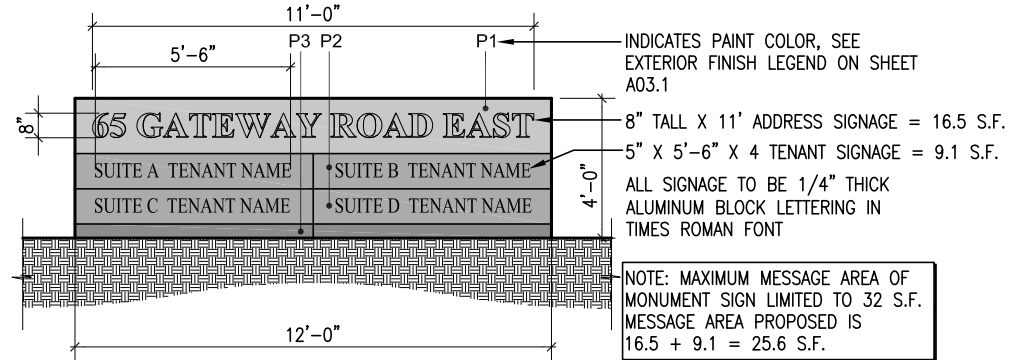
1

PROFILI INDUSTRIAL BUILDING



PARTIAL SOUTH ELEVATION (WEST END OF THE BUILDING)

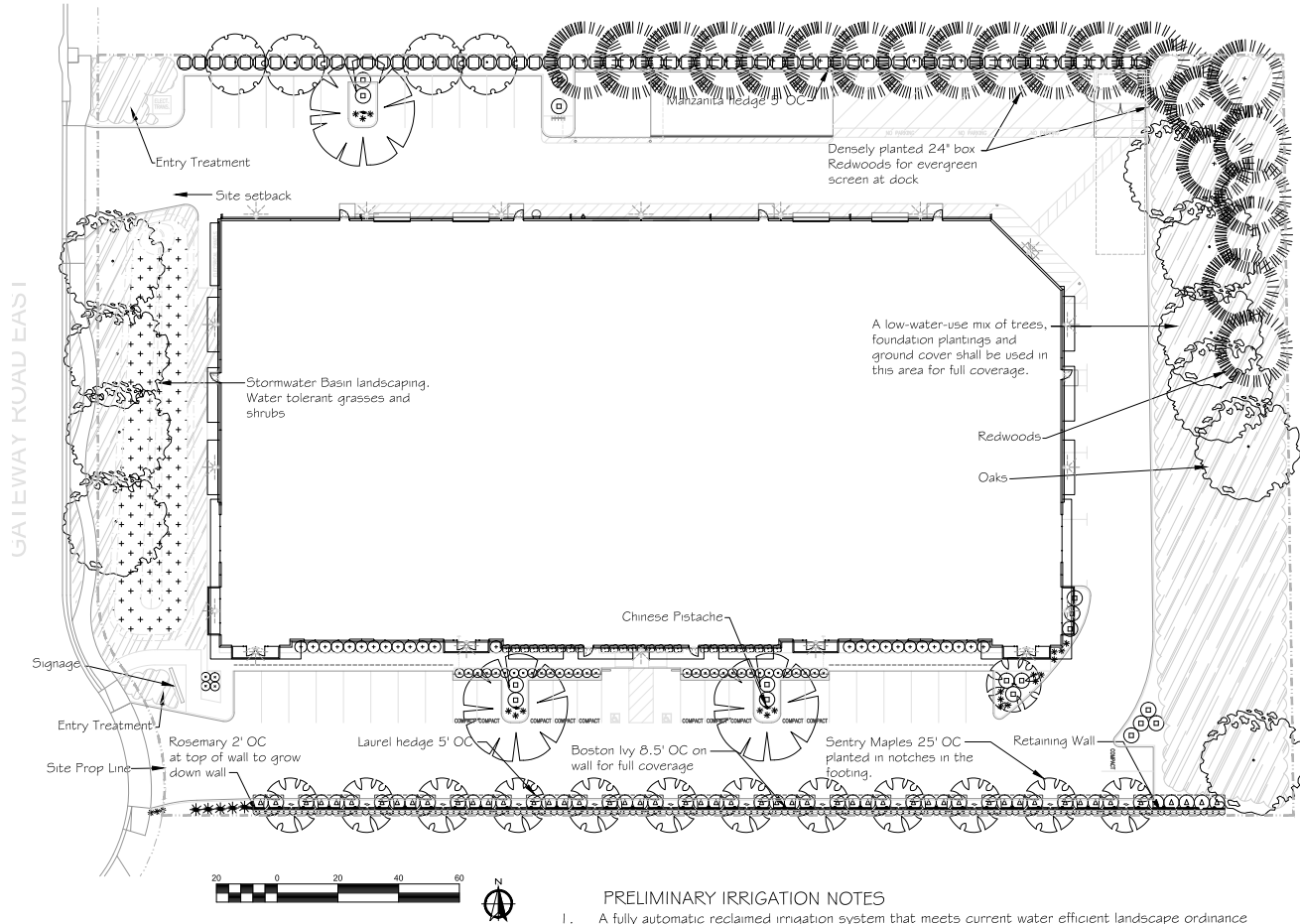
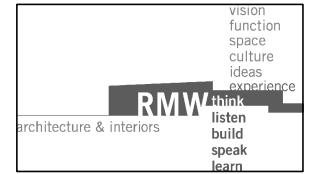
TYPICAL WALL MOUNTED TENANT SIGNS



MONUMENT SIGN ELEVATIONS (FOR REFERENCE ONLY)



PROFILI INDUSTRIAL BUILDING



PLANT PALETTE

TREES

BOTANICAL NAME	COMMON NAME	WUCOLS	SIZE	QTY
Acer p. Crimson Sentry	Crimson Sentry Maple	Med	15 Gallon	13
Pistacia chinensis	Chinese Pistache	Low	15 Gallon	3
Pyrus 'Chanticleer'	Chanticleer Pear	Med	15 Gallon	4
Quercus virginiana	Southern Live Oak	Low	15 Gallon	10
Sequoia s. 'Aptos Blue'	Redwood	Med	24" Box	22

SHRUBS

BOTANICAL NAME	COMMON NAME	WUCOLS	SIZE	QTY
Arctostaphylos Howard McMinn	Mazanita	Low	5 Gallon	
Berberis autorpurpurea	Purple Barberry	Low	5 Gallon	
Buxus j. 'Green Beauty'	Boxwood	Med	5 Gallon	
Ceanothus 'Skylark'	California Lilac	Low	5 Gallon	
Cistus purpureus	Purple Rockrose	Low	5 Gallon	
Diets bicolor	Fortnight Lily	Low	5 Gallon	
Engeron karvinskianus	Santa Barbara Daisy	Low	1 Gallon	
Heteromeles arbutifolia	Toyon	Low	5 Gallon	
Lavandula angustifolia	English Lavender	Low	5 Gallon	
Nandina d. 'Gulfstream'	Heavenly Bamboo	Low	5 Gallon	
Pennisetum s. rubrum	Purple Fountain Grass	Low	1 Gallon	
Prunus caroliniana	Carolina Cherry Laurel	Med	5 Gallon	
Raphiolepis l. 'Pink Lady'	Indian Hawthorne	Low	5 Gallon	
Rhamnus c. 'Eve Case'	Coffee Berry	Low	5 Gallon	
Rosinannus prostrata	Prostrate Rosemary	Low	1 Gallon	
Tulbaghia violacea	Society Garlic	Low	1 Gallon	
Viburnum t. 'Spring Bouquet'	Spring Bouquet	Low	5 Gallon	
Xylosma c. compacta	Compact Xylosma	Low	5 Gallon	

VINES

Parthenocissus tricuspidata	Boston Ivy	Med	5 Gallon	
-----------------------------	------------	-----	----------	--

GROUND COVER

Coprosma p. 'Verde Vista'	NCN	Low	1 Gallon	36" OC
Cotoneaster lowfast	Barberry	Low	1 Gallon	36" OC
Hemerocallis evergreen Yellow	Yellow Day Lily	Med	1 Gallon	24" OC

STORMWATER FACILITIES PALETTE

BOTANICAL NAME	COMMON NAME	WUCOLS	SIZE	QTY
Calamagrostis a. 'Karl Foerster'	Reed Grass	Med	1 Gallon	48" OC
Carex tumulicola	Sedge	Med	Liners	18" OC
Ins PCH mixed	Mixed Ins	Med	Liners	24" OC
Juncus patens	California Grey Rush	Med	Liners	18" OC
Muhlenbergia capillans	Pink Muhlygrass	Low	1 Gallon	36" OC
Rosa californica	California Wild Rose	Low	1 Gallon	60" OC

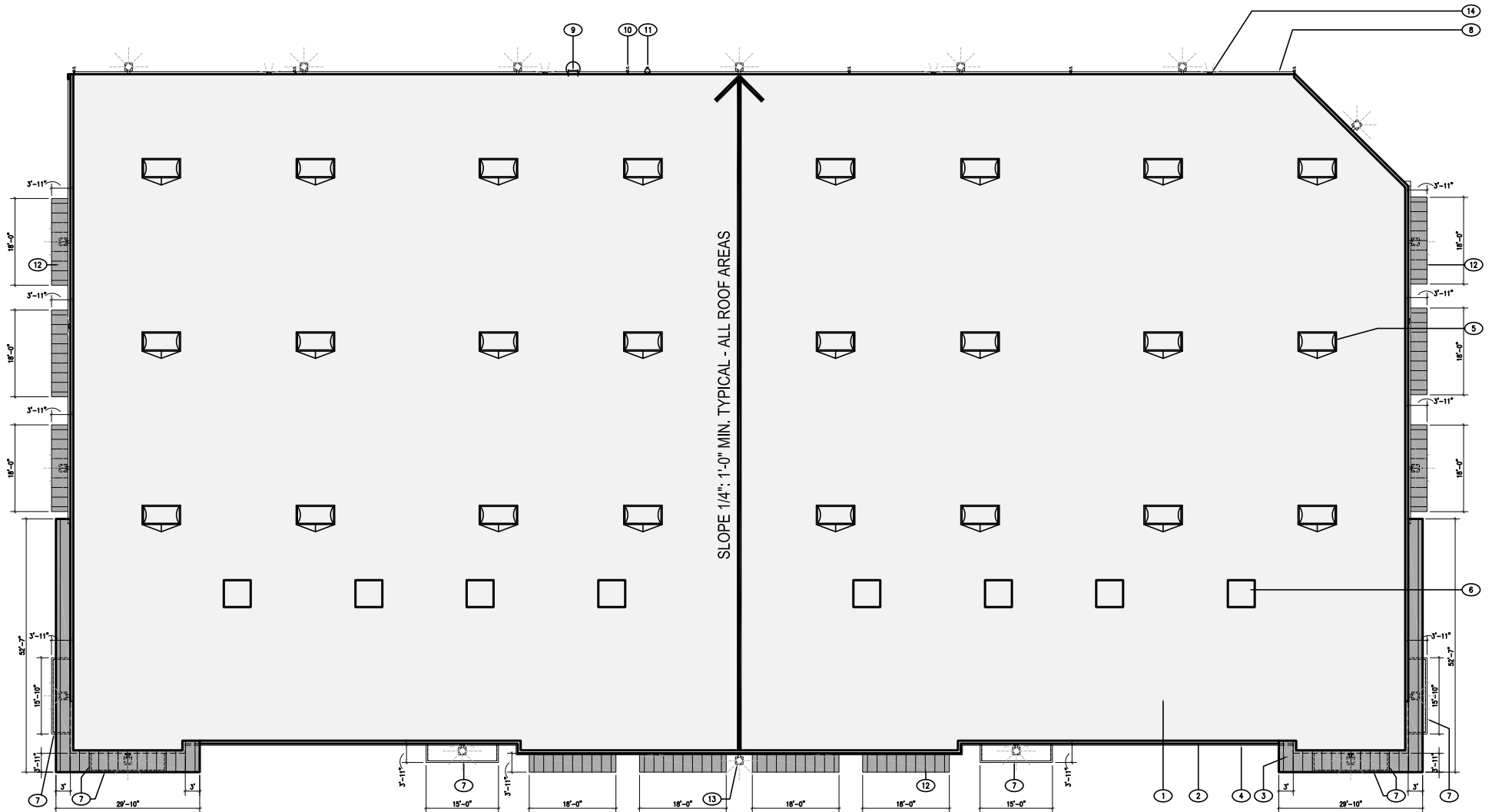
PRELIMINARY IRRIGATION NOTES

1. A fully automatic reclaimed irrigation system that meets current water efficient landscape ordinance requirements shall be installed including the following:
 2. An ET (Smart) controller and ET Sensor shall be used to control irrigation application.
 3. Irrigated stormwater quality basins and large planter areas shall be irrigated with MP Rotator (low volume-high efficiency) pop-up sprinklers.
 4. All other planter areas shall be irrigated with sub surface drip irrigation.
 5. Trees shall receive bubbler irrigation on separate control valve.
 6. Irrigation system shall be designed with reclaimed irrigation materials for potential future reclaimed water supply.
 7. All WELO documentation shall be submitted with landscape improvement plans (construction documents).

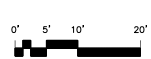
VISTA PARKS LANDSCAPING INC.

3323 Watt Ave. #229 Sacramento, CA 95821
 PH. (916) 681-2227 FAX (916) 681-2228

PROFILI INDUSTRIAL BUILDING



SLOPE 1/4": 1'-0" MIN. TYPICAL - ALL ROOF AREAS



PRELIMINARY ROOF PLAN

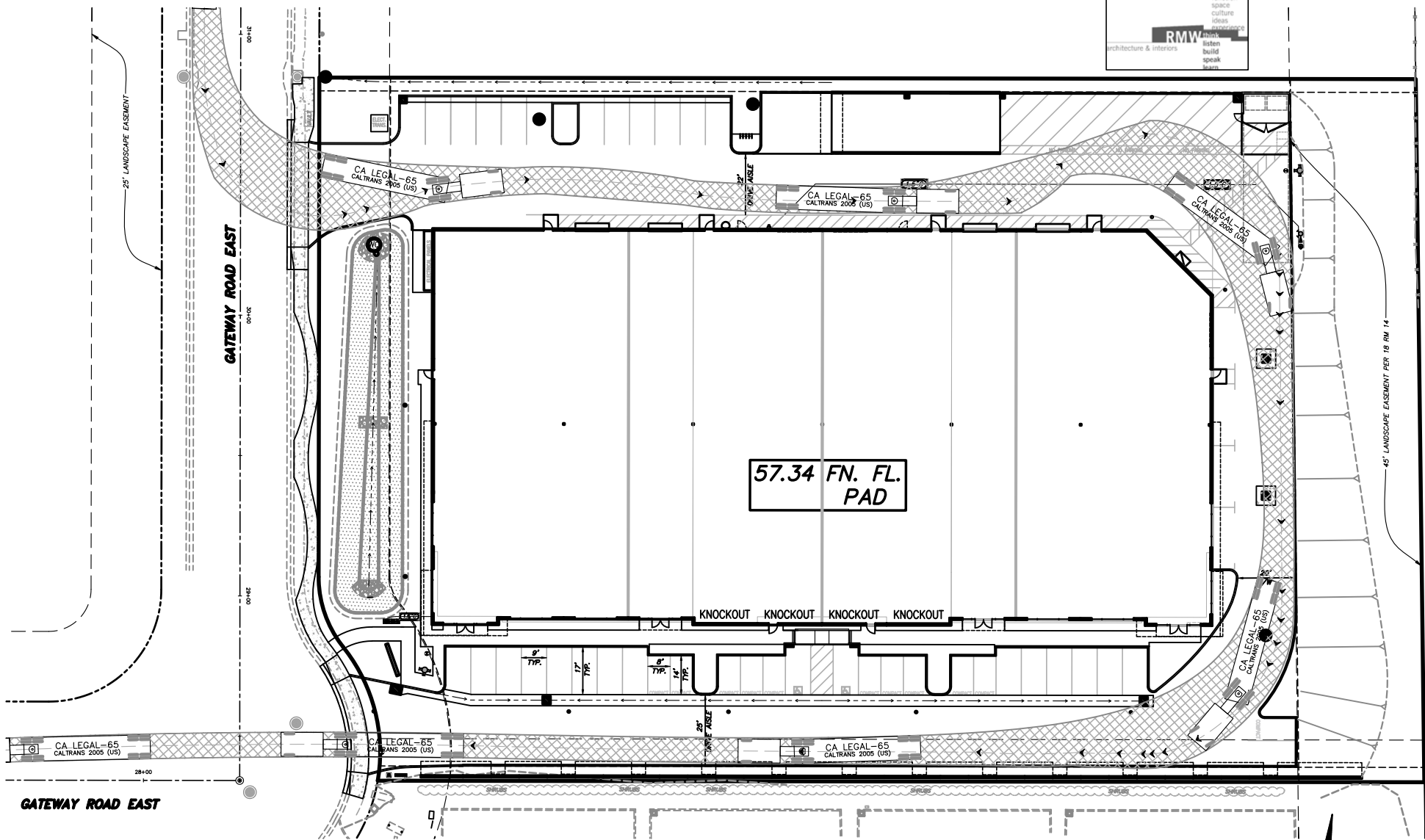
1

KEYNOTES:

- ① SINGLE PLY TPO ROOF MEMBRANE OVER PLYWOOD ROOF DECK OVER STRUCTURAL FRAMING.
- ② LINE OF BUILDING PARAPET
- ③ SLOPED METAL ROOF WITH MATCHING METAL FASCIA OVER STEEL OR WOOD FRAMING ABOVE
- ④ 4" DEEP X 12" TALL FOAM BANDING WITH TEXTURED EXTERIOR COATING
- ⑤ 4' X 8' DUAL DOME SELF CURBING SKYLIGHTS
- ⑥ POTENTIAL LOCATION OF ROOF MOUNTED HVAC EQUIPMENT. ALL ROOF MOUNTED HVAC EQUIPMENT TO BE SCREENED FROM VIEW EITHER BY THE NATURE OF THE EQUIPMENT PLACEMENT OR VIA A MECHANICAL SCREEN.
- ⑦ CANOPY BELOW: 12" TALL X 4" DEEP PAINTED STEEL C-CHANNEL EDGE FRAME WITH FLUTED METAL PANEL INFILL AND DIAGONAL SUPPORT STRUT RODS. SEE EXTERIOR ELEVATIONS. TYPICAL OF 6 LOCATIONS.
- ⑧ PAINTED GUTTER AT NORTH SIDE OF BUILDING
- ⑨ ROOF ACCESS LADDER
- ⑩ INDICATES LOCATION OF DOWNSPOUT BELOW, TYPICAL
- ⑪ LOCATION OF FIRE SPRINKLER RISER BELOW
- ⑫ SLOPED METAL ROOF WITH MATCHING METAL FASCIA OVER STEEL FRAMING ABOVE, TYPICAL TO 10 LOCATIONS. SEE 9/A01.2
- ⑬ INDICATES LOCATIONS OF EXTERIOR WALL MOUNTED SITE LIGHTING FIXTURE - TYPICAL OF 18. SEE DETAIL 11/A01.4
- ⑭ INDICATES LOCATIONS OF EXTERIOR WALL MOUNTED EMERGENCY LIGHTING FIXTURE - TYPICAL AT ALL EXTERIOR DOORS. SEE DETAIL 7/A01.4



PROFILI INDUSTRIAL BUILDING

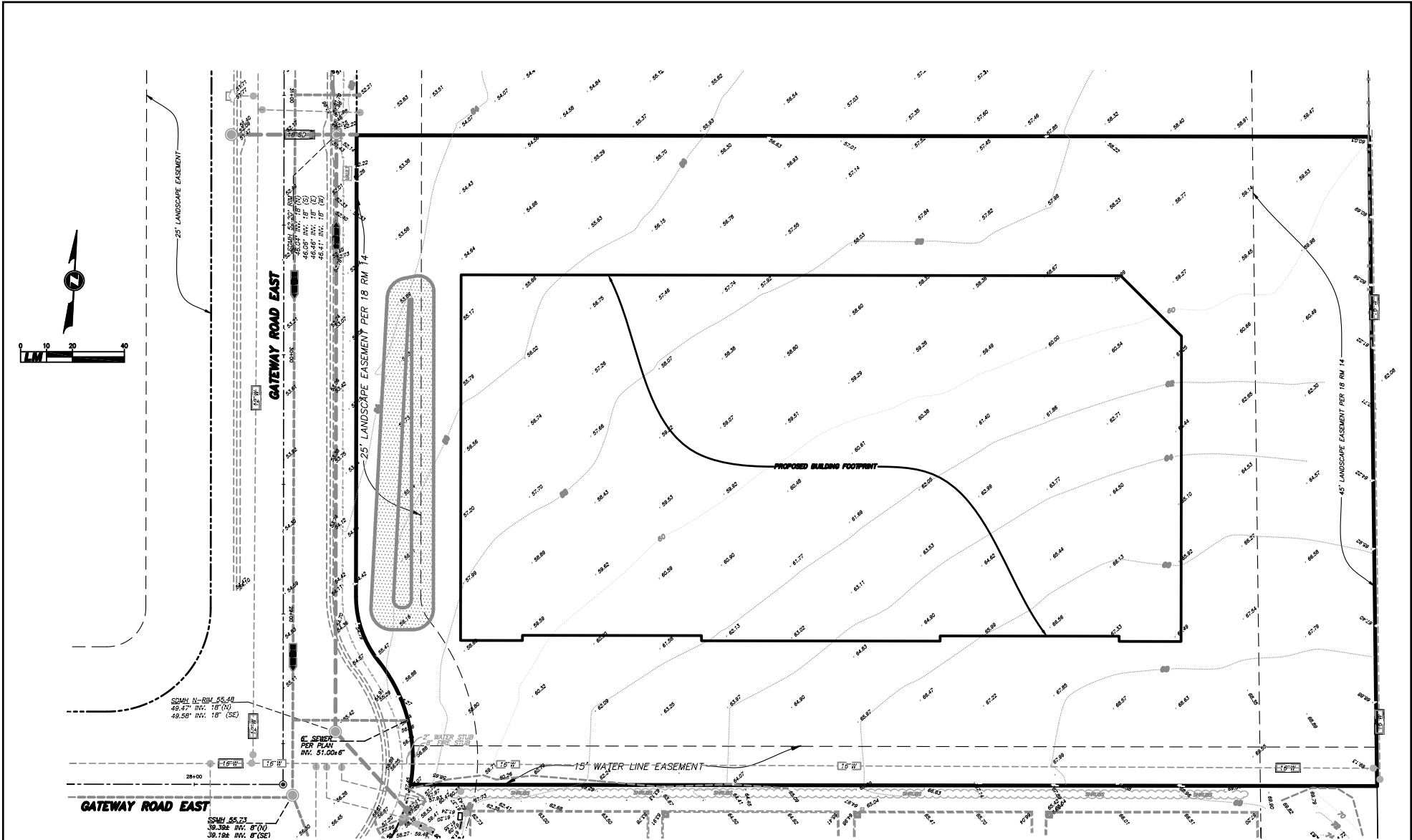


GATEWAY ROAD EAST

CIVIL SITE PLAN



PROFILI INDUSTRIAL BUILDING



vision
function
space
culture
ideas
experience

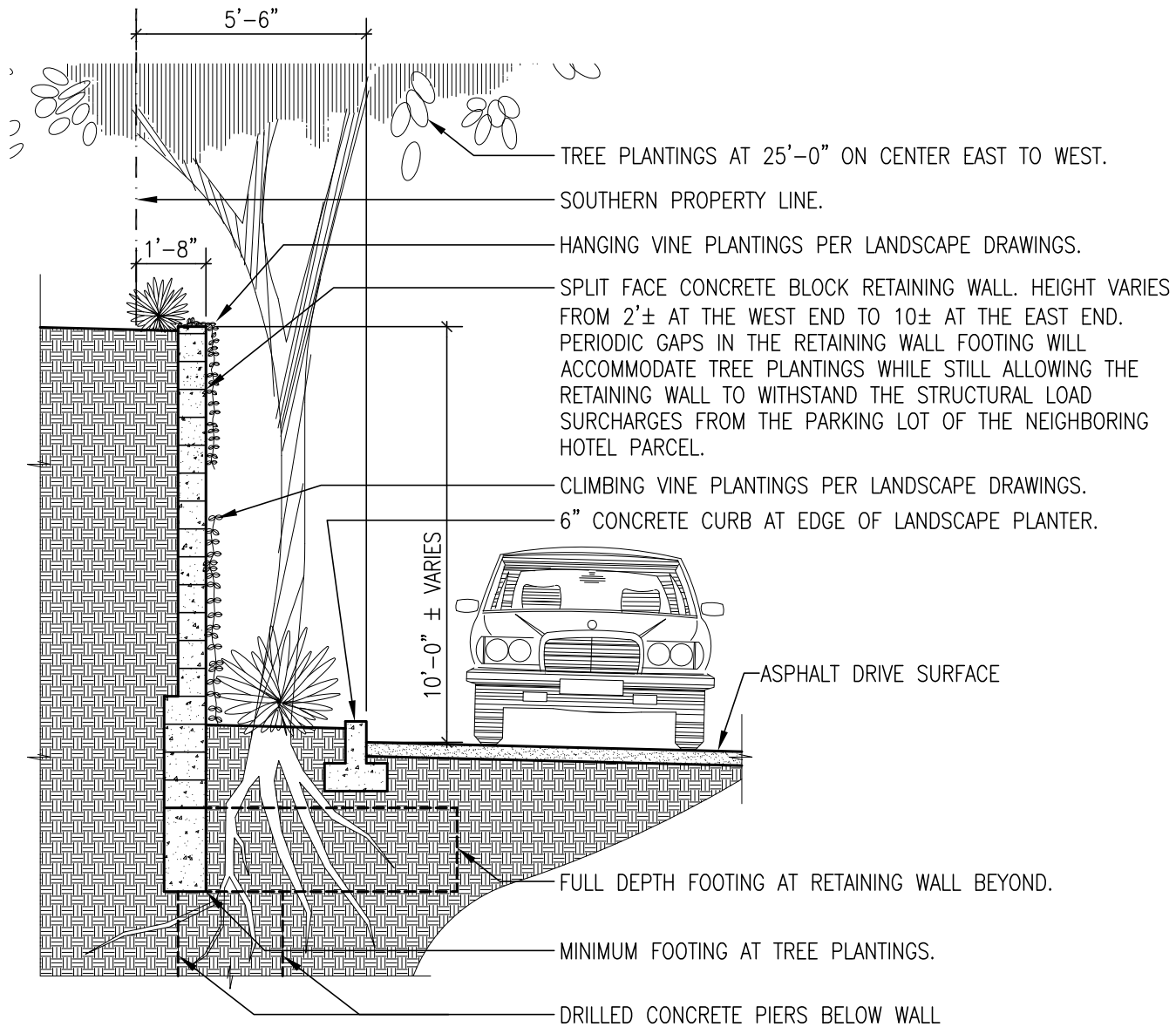
RMW think
listen
build
speak
learn

architecture & interiors



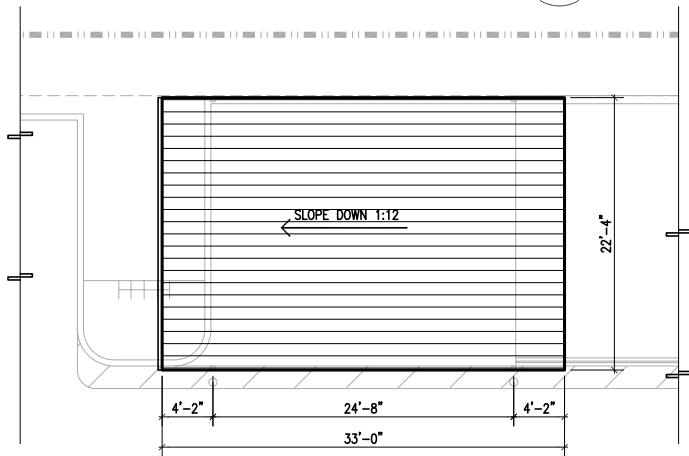
TOPOGRAPHIC SURVEY

PROFILI INDUSTRIAL BUILDING

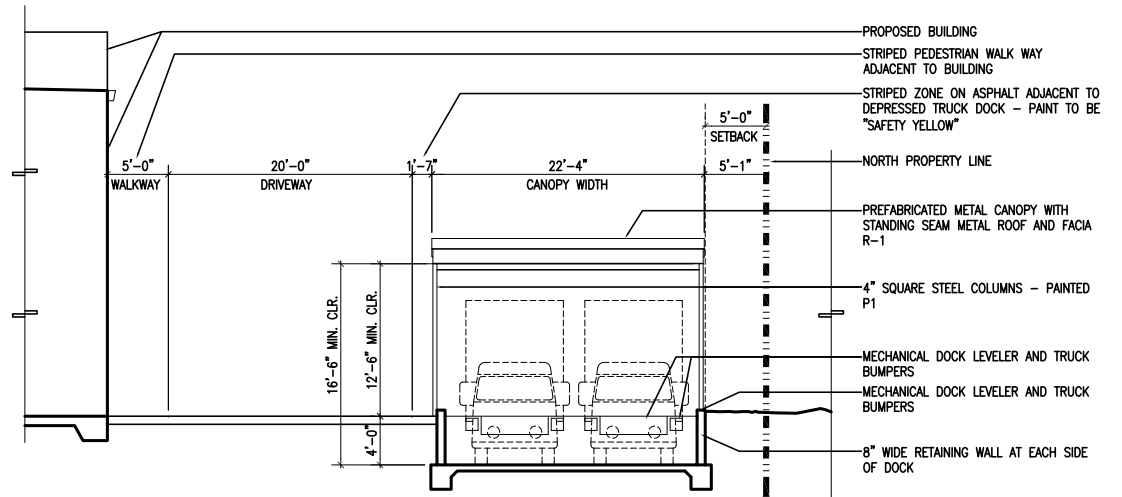


RETAINING WALL AT SOUTHERN PROPERTY LINE

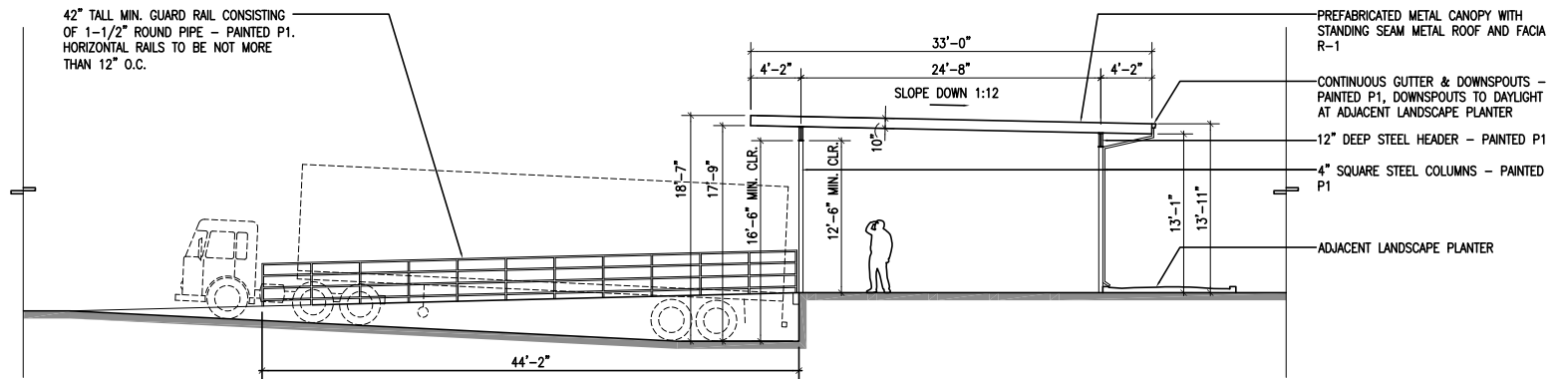
PROFILI INDUSTRIAL BUILDING



CANOPY ROOF PLAN



CANOPY, DOCK AND GUARDRAIL ELEVATION / SECTION FACING WEST



CANOPY, DOCK AND GUARDRAIL ELEVATION / SECTION FACING SOUTH

CANOPY AND GUARD RAIL AT DEPRESSED TRUCK DOCK