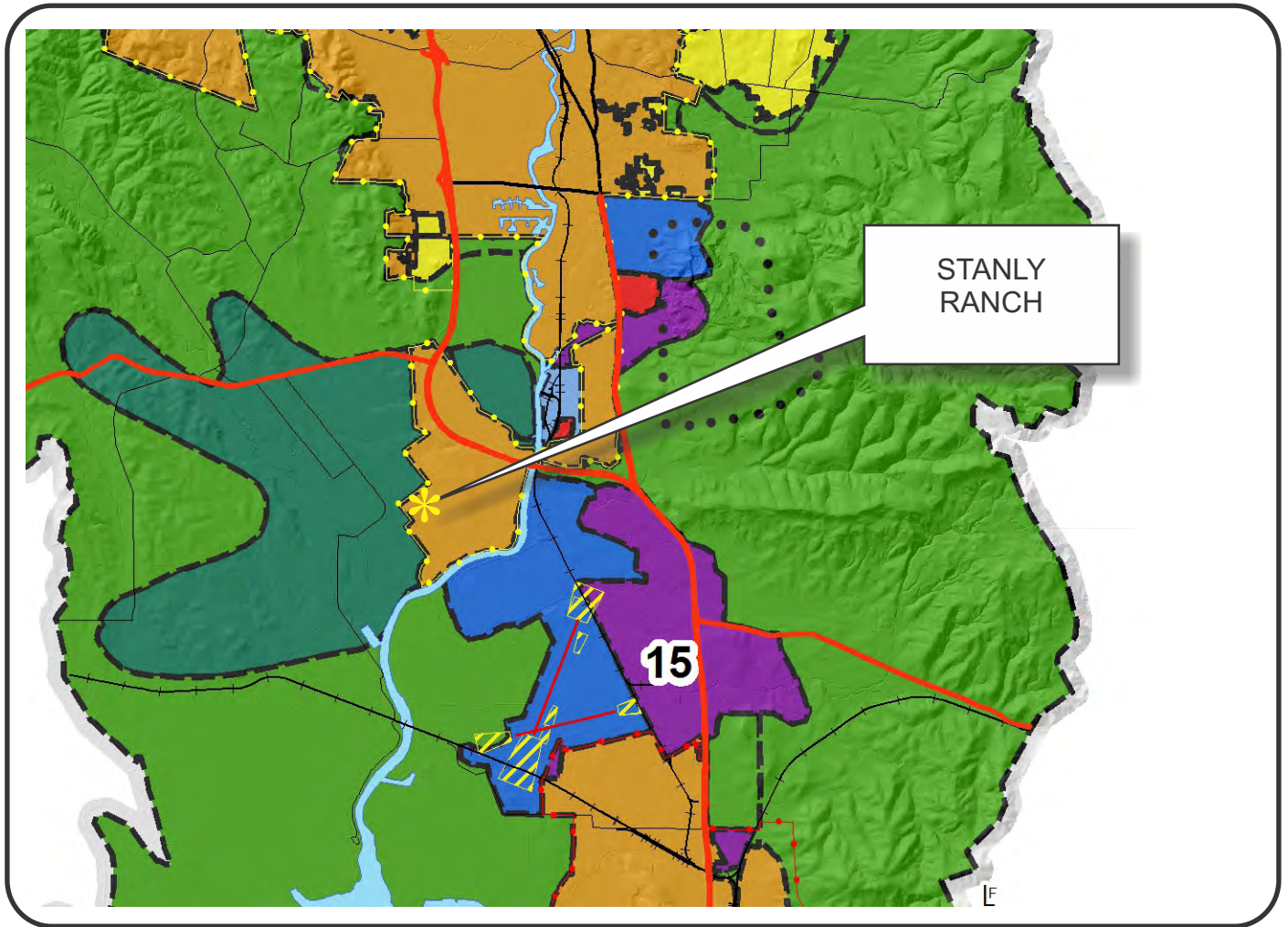


NAPA COUNTY LAND USE PLAN 2008 - 2030



LEGEND



URBANIZED OR NON-AGRICULTURAL

- Study Area
- Cities
- Urban Residential*
- Rural Residential*
- Industrial
- Public-Institutional
- Napa Pipe Mixed Use

OPEN SPACE

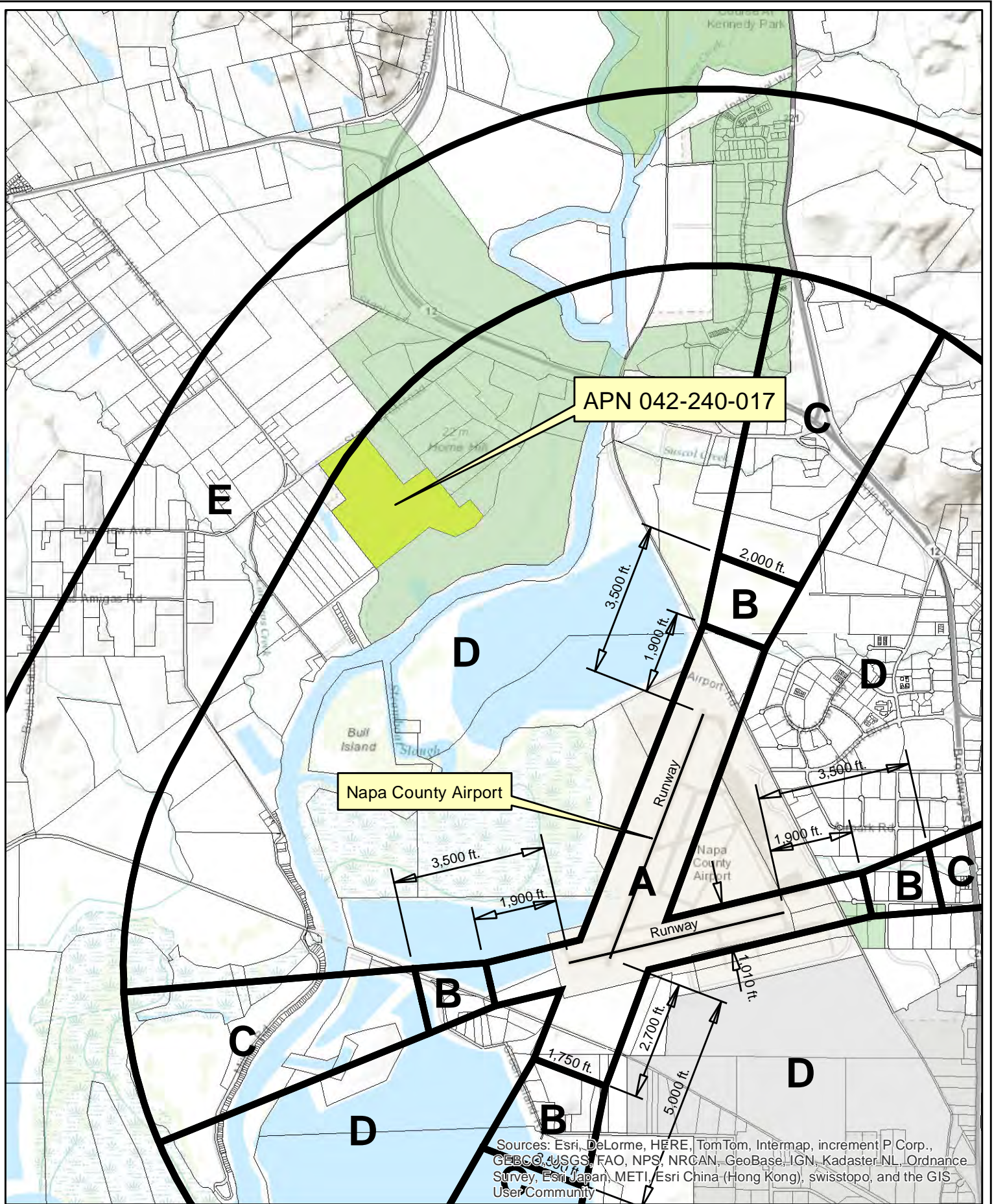
- Agriculture, Watershed & Open Space
- Agricultural Resource

TRANSPORTATION

- Mineral Resource
- Limited Access Highway
- Major Road
- American Canyon ULL
- City of Napa RUL
- Landfill - General Plan
- Secondary Road
- Airport
- Railroad
- Airport Clear Zone

* See Action Item AG/LU-114.1 regarding agriculturally zoned areas within these land use designations

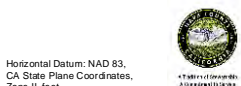
APN
042-240-017
07-28-2014
3B ALUC



APN 042-240-017

Napa County Airport

Sources: Esri, DeLorme, HERE, TomTom, Intermap, increment P Corp., GEBCO, USGS, FAO, NPS, NRCAN, GeoBase, IGN, Kadaster NL, Ordnance Survey, Esri Japan, METI, Esri China (Hong Kong), swisstopo, and the GIS User Community



Horizontal Datum: NAD 83,
CA State Plane Coordinates,
Zone II, West

Disclaimer: This map was prepared for informational purposes only. No liability is assumed for the accuracy of the data delineated herein.

Compatibility Plan

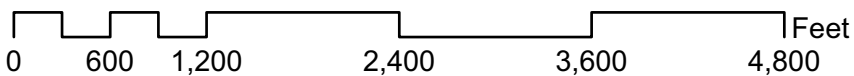
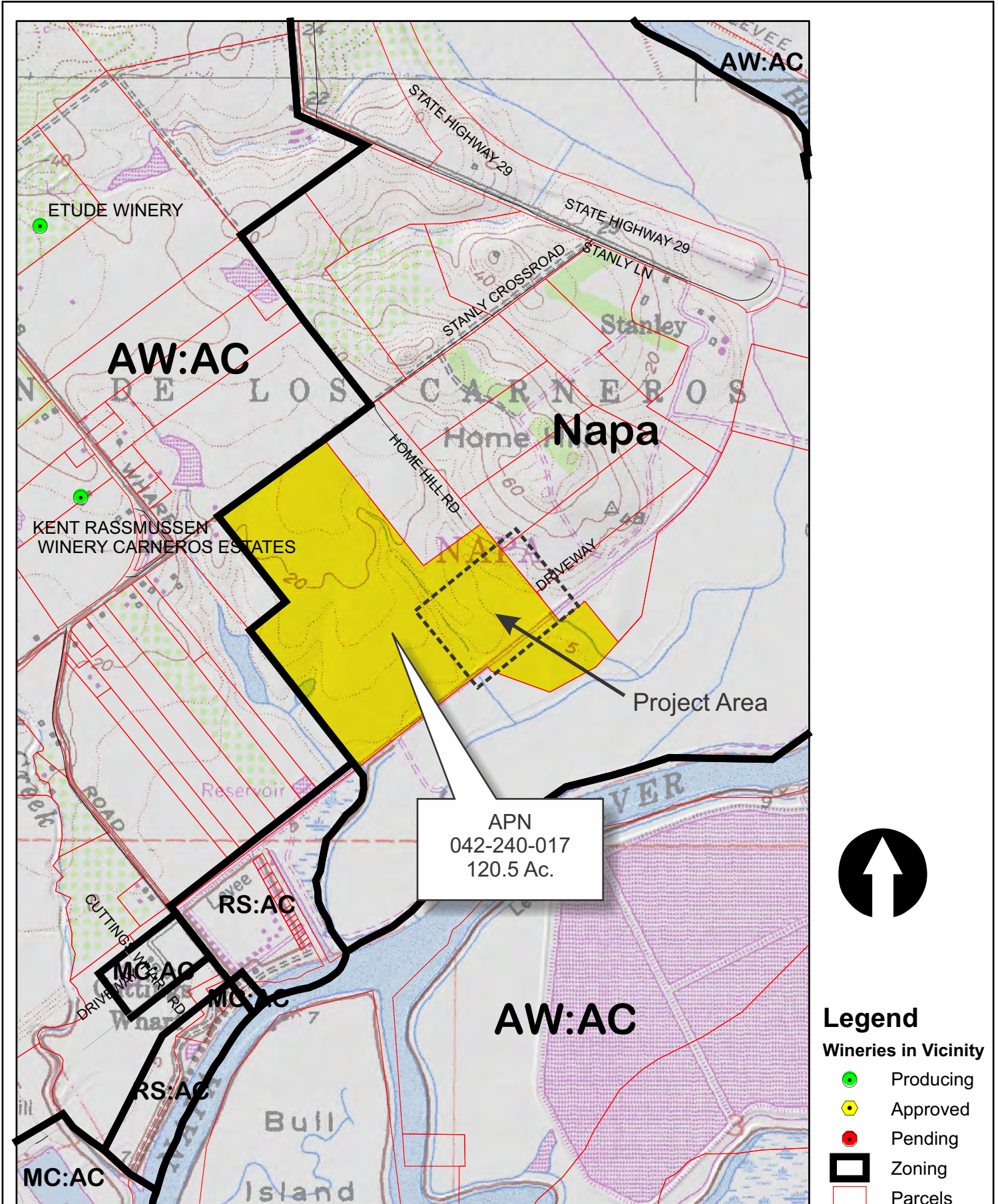
Napa County Airport



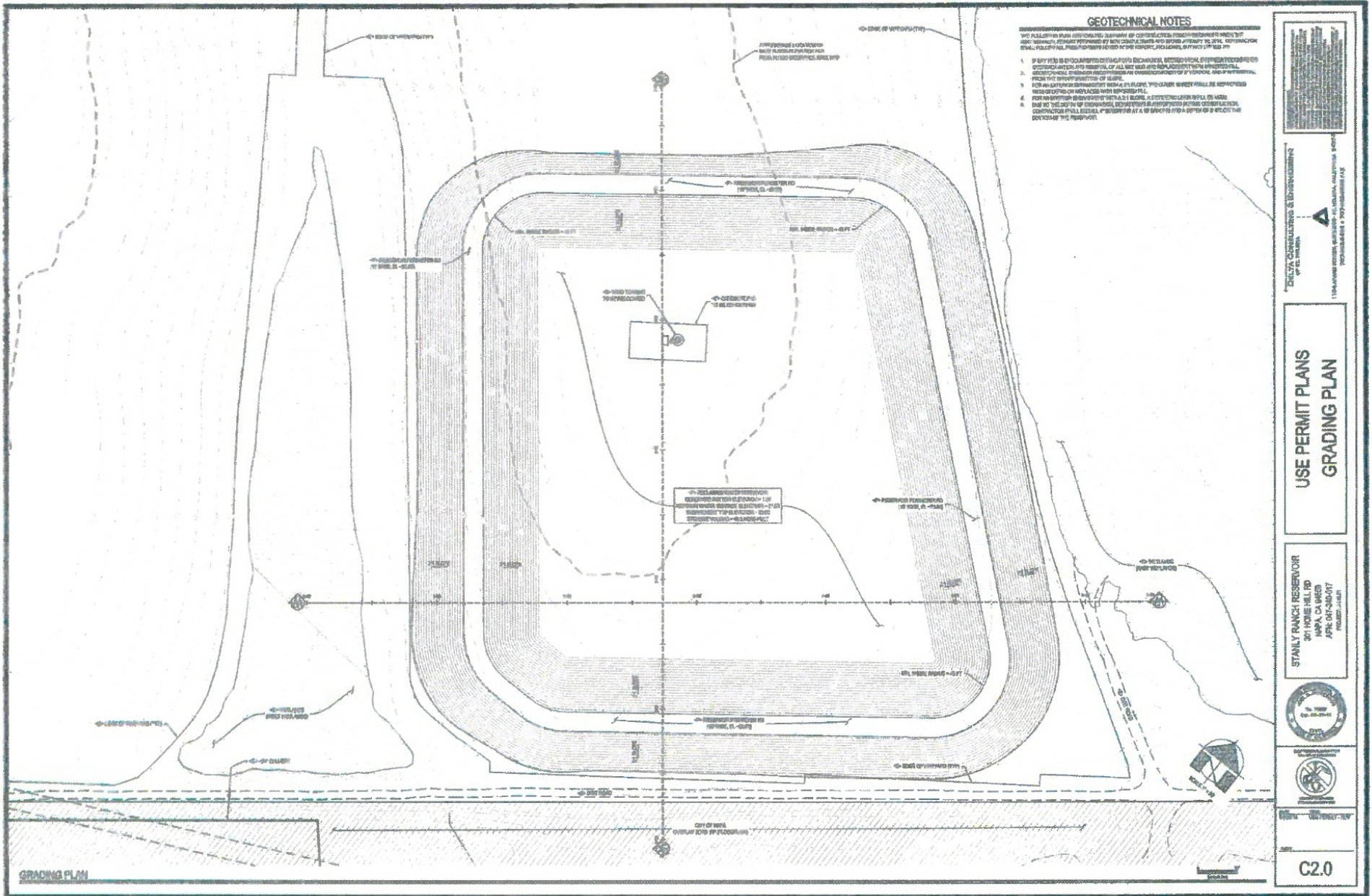
0 700 1,400 2,800'

Napa County P.B.E.S. - 07/2014

STANLY RANCH



STANLY RANCH



GEOTECHNICAL NOTES

THE FOLLOWING ARE ASSUMED TO BE CORRECTED TO THE DESIGN CONDITIONS BY THE CONTRACTOR. THE CONTRACTOR SHALL BE RESPONSIBLE FOR VERIFYING THE DESIGN CONDITIONS BY THE CONTRACTOR. THE CONTRACTOR SHALL BE RESPONSIBLE FOR VERIFYING THE DESIGN CONDITIONS BY THE CONTRACTOR.

1. IF ANY ITEM IS SPECIFICALLY IDENTIFIED AS A GEOTECHNICAL ISSUE, THE CONTRACTOR SHALL BE RESPONSIBLE FOR VERIFYING THE DESIGN CONDITIONS BY THE CONTRACTOR.
2. THE CONTRACTOR SHALL BE RESPONSIBLE FOR VERIFYING THE DESIGN CONDITIONS BY THE CONTRACTOR.
3. FOR ALL GEOTECHNICAL ISSUES, THE CONTRACTOR SHALL BE RESPONSIBLE FOR VERIFYING THE DESIGN CONDITIONS BY THE CONTRACTOR.
4. FOR ALL GEOTECHNICAL ISSUES, THE CONTRACTOR SHALL BE RESPONSIBLE FOR VERIFYING THE DESIGN CONDITIONS BY THE CONTRACTOR.

DATE: 07/28/2014
PROJECT: STANLY RANCH RESERVOIR
CLIENT: NAPA COUNTY
PROJECT NO.: 14-001

ENGINEER: D. J. HARRIS
PROJECT ENGINEER: D. J. HARRIS
SCALE: AS SHOWN

**USE PERMIT PLANS
 GRADING PLAN**

**STANLY RANCH RESERVOIR
 301 HOME HILL RD
 NAPA, CA 94950
 APRIL 2014
 PROJECT 14-001**



C2.0