

CCU0803 / FA#10151685

ANGWIN - PACIFIC UNION COLLEGE

146 LA JOTA DRIVE

ANGWIN, CA 94508

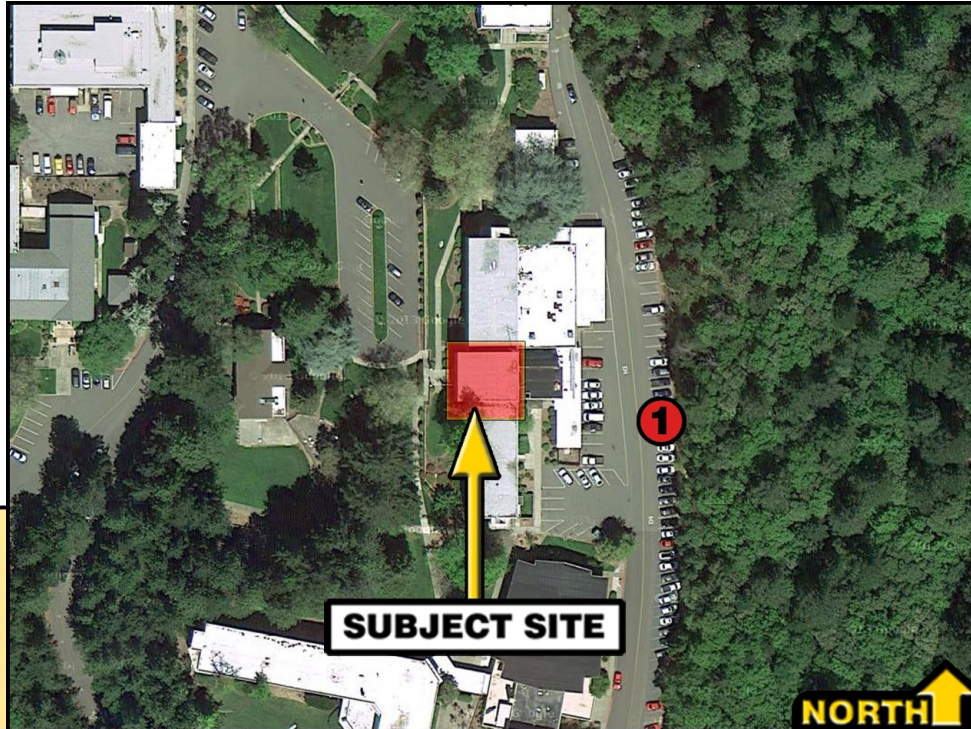


at&t

September 26, 2013

View #: 1

Location



SUBJECT SITE

NORTH

Existing



Proposed



The illustration above is a representation of the proposed project based on information provided by the client. Actual construction may vary dependent on approved construction plans and therefore PTS (Pacific Telecom Services) is not responsible for any post production design changes. Monotree disclaimer: (In the event that the proposed installation includes a monotree) The proposed installation is an artistic representation of a tree, and not intended to be an exact reproduction of an actual living tree. The final installation will have cables, cable ports, and various attachments, such as antennas, nuts, and bolts. While every effort will be made to disguise these components, they will not be readily apparent to the casual observer or passerby. However, upon close scrutiny, the true nature of the installation will be apparent.

AT&T Mobility
2600 Camino Ramon, 4th Floor
San Ramon, CA 94583
Jimmy Stillman - Phone: (530) 913-9577

Prepared by: CJL
PTS
Pacific Telecom Services, LLC
3199 C Airport Loop Drive, Costa Mesa, CA 92626-3414
REV: A

CCU0803 / FA#10151685

ANGWIN - PACIFIC UNION COLLEGE

146 LA JOTA DRIVE

ANGWIN, CA 94508

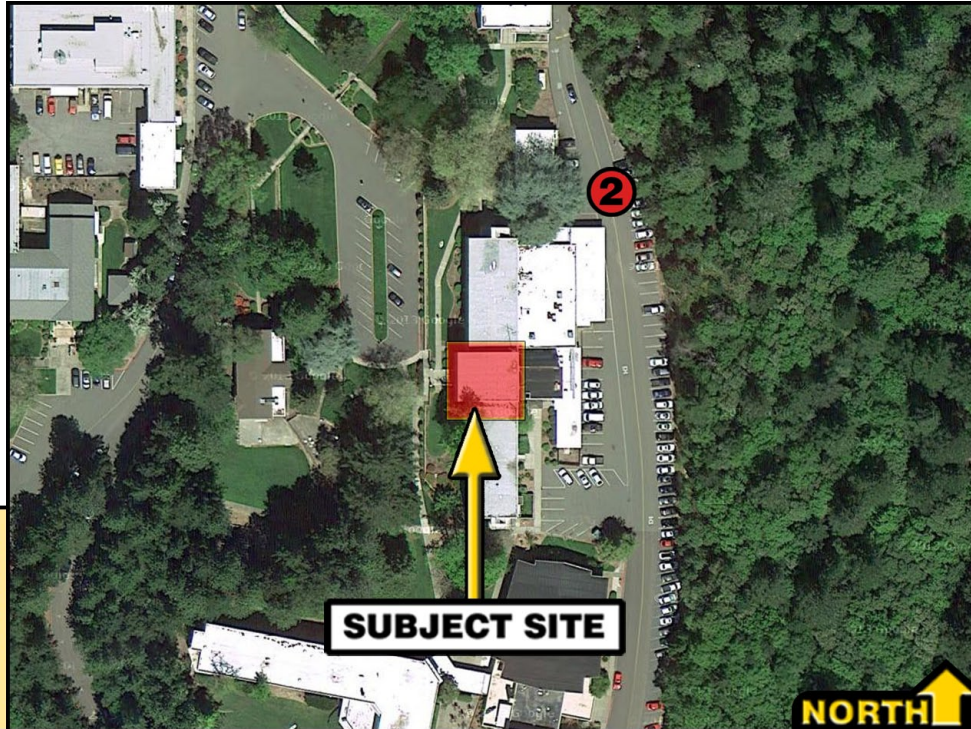


at&t

September 26, 2013

View #: 2

Location



SUBJECT SITE

NORTH

Existing



Proposed



The illustration above is a representation of the proposed project based on information provided by the client. Actual construction may vary dependent on approved construction plans and therefore PTS (Pacific Telecom Services) is not responsible for any post production design changes. Monotree disclaimer: (In the event that the proposed installation includes a monotree) The proposed installation is an artistic representation of a tree, and not intended to be an exact reproduction of an actual living tree. The final installation will have cables, cable ports, and various attachments, such as antennas, nuts, and bolts. While every effort will be made to disguise these components, they will not be readily apparent to the casual observer or passerby. However, upon close scrutiny, the true nature of the installation will be apparent.

AT&T Mobility
2600 Camino Ramon, 4th Floor
San Ramon, CA 94583
Jimmy Stillman - Phone: (530) 913-9577

Prepared by: CJL
PTS
Pacific Telecom Services, LLC
3199 C Airport Loop Drive, Costa Mesa, CA 92626-3414
REV: A

CCU0803 / FA#10151685

ANGWIN - PACIFIC UNION COLLEGE

146 LA JOTA DRIVE

ANGWIN, CA 94508

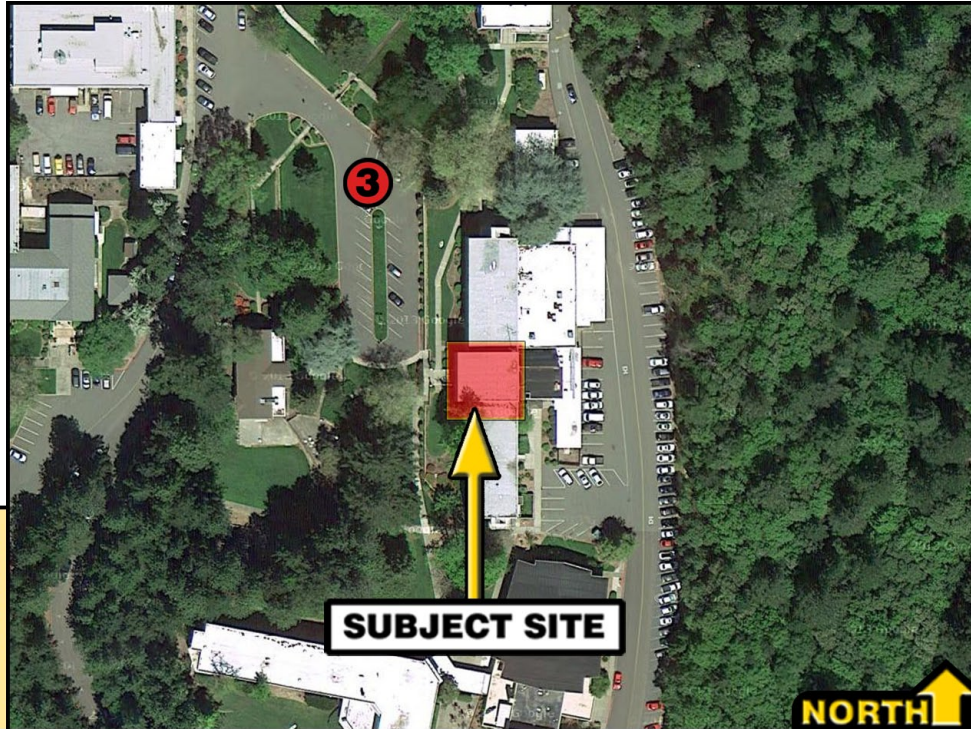


at&t

September 26, 2013

View #: 3

Location



Existing



Proposed



PROPOSED AT&T MOBILITY EQUIPMENT
(NOT SEEN IN THIS VIEW)

PROPOSED AT&T PANEL ANTENNAS MOUNTED
BEHIND A PROPOSED AT&T 10' TALL PARAPET
SCREEN WALL EXTENSION (PAINTED AND
TEXTURED TO MATCH EXISTING BUILDING)

The illustration above is a representation of the proposed project based on information provided by the client. Actual construction may vary dependent on approved construction plans and therefore PTS (Pacific Telecom Services) is not responsible for any post production design changes. Monotree disclaimer: (In the event that the proposed installation includes a monotree) The proposed installation is an artistic representation of a tree, and not intended to be an exact reproduction of an actual living tree. The final installation will have cables, cable ports, and various attachments, such as antennas, nuts, and bolts. While every effort will be made to disguise these components, they will not be readily apparent to the casual observer or passerby. However, upon close scrutiny, the true nature of the installation will be apparent.

AT&T Mobility
2600 Camino Ramon, 4th Floor
San Ramon, CA 94583
Jimmy Stillman - Phone: (530) 913-9577