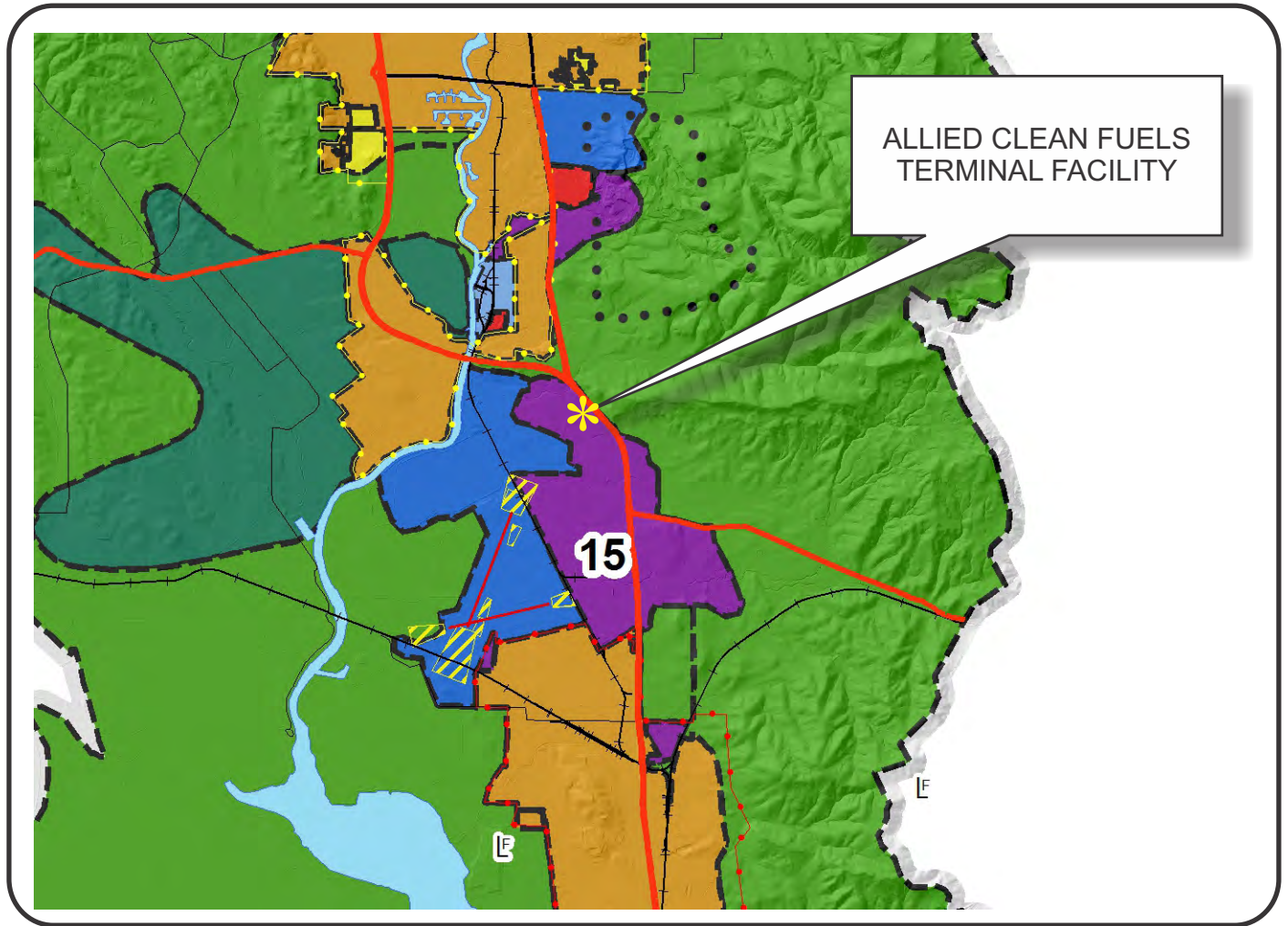


NAPA COUNTY LAND USE PLAN 2008 - 2030



LEGEND



URBANIZED OR NON-AGRICULTURAL

- Study Area
- Cities
- Urban Residential*
- Rural Residential*
- Industrial
- Public-Institutional
- Napa Pipe Mixed Use

OPEN SPACE

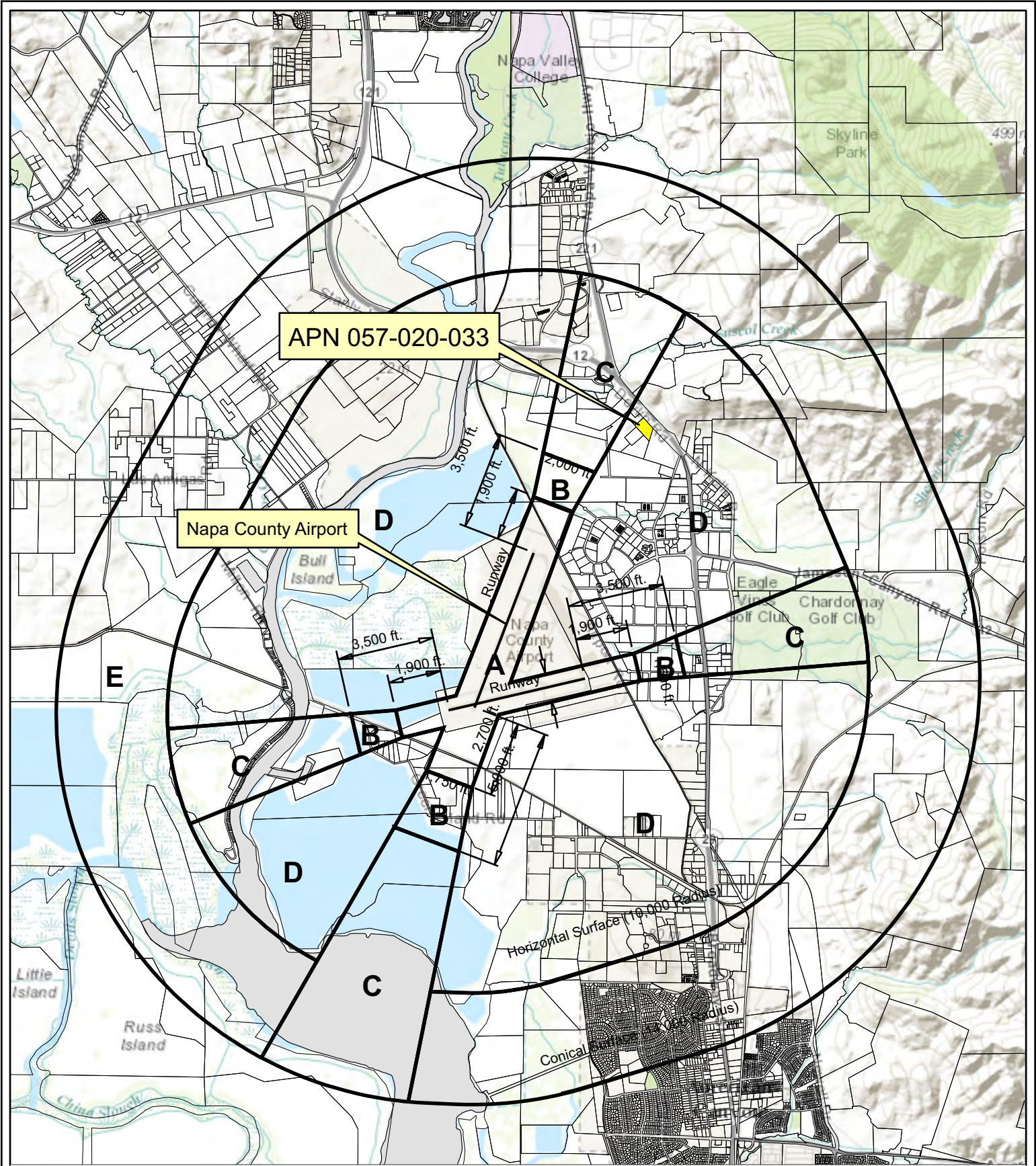
- Agriculture, Watershed & Open Space
- Agricultural Resource

TRANSPORTATION

- Mineral Resource
- Limited Access Highway
- Major Road
- American Canyon ULL
- City of Napa RUL
- Landfill - General Plan
- Secondary Road
- Airport
- Railroad
- Airport Clear Zone

* See Action Item AG/LU-114.1 regarding agriculturally zoned areas within these land use designations

APN
057-020-033
01-29-2014
3C ALU



Horizontal Datum: NAD 83,
CA State Plane Coordinates,
Zone II, feet



Disclaimer: This map was prepared for informational purposes only. No liability is assumed for the accuracy of the data delineated herein.

Compatibility Plan

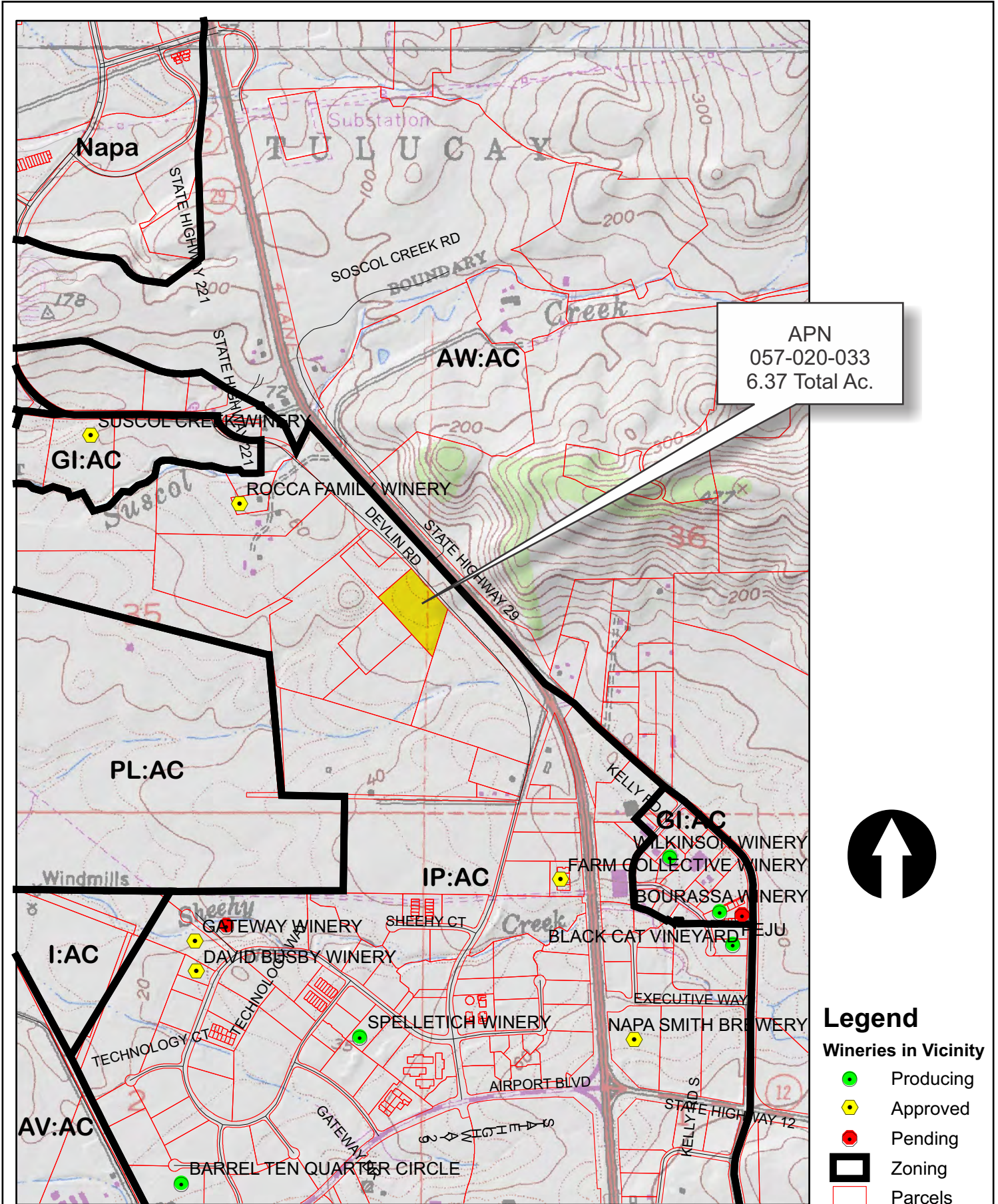
Napa County Airport



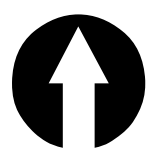
0 1,150 2,300 4,600'

Napa County P.B.E.S. - 01/2014

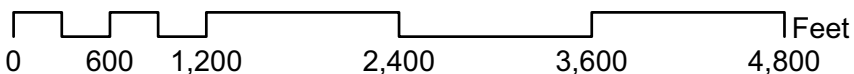
ALLIED CLEAN FUELS TERMINAL FACILITY



APN
057-020-033
6.37 Total Ac.



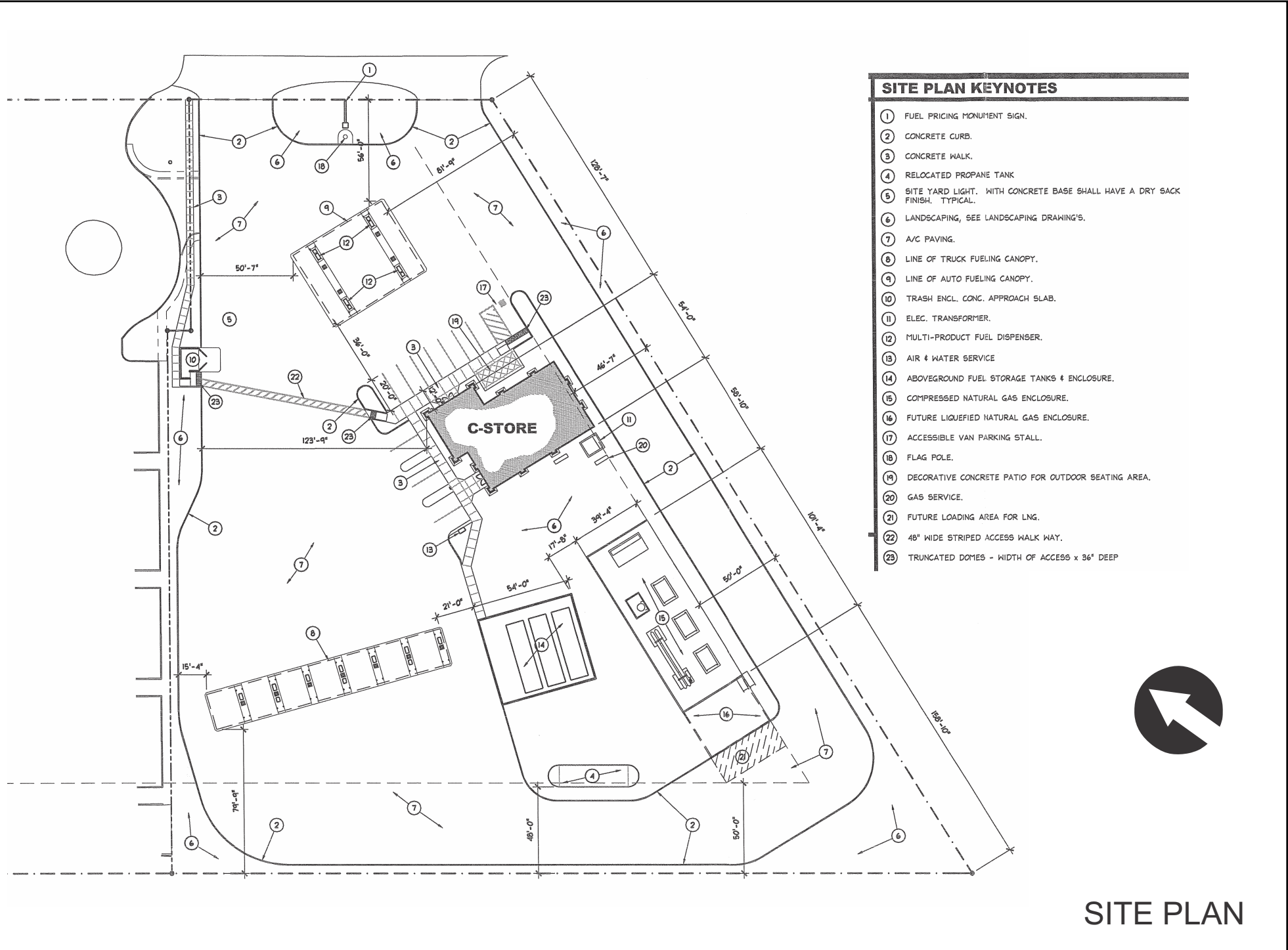
- Legend**
- Wineries in Vicinity**
- Producing
 - ◆ Approved
 - Pending
 - Zoning
 - Parcels



ALLIED CLEAN FUELS TERMINAL FACILITY



ALLIED CLEAN FUELS TERMINAL FACILITY

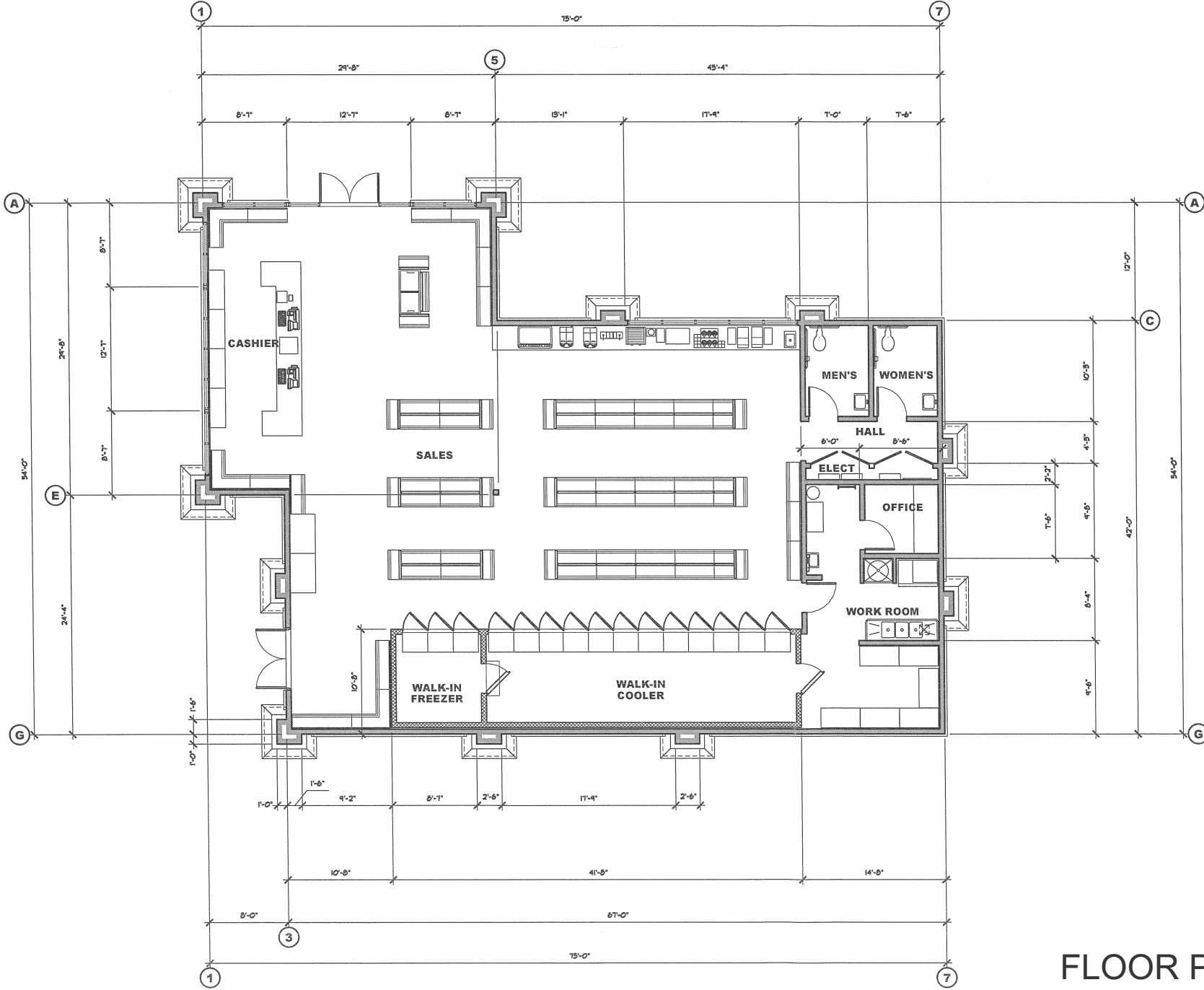


| SITE PLAN KEYNOTES | |
|--------------------|--|
| ① | FUEL PRICING MONUMENT SIGN. |
| ② | CONCRETE CURB. |
| ③ | CONCRETE WALK. |
| ④ | RELOCATED PROPANE TANK |
| ⑤ | SITE YARD LIGHT. WITH CONCRETE BASE SHALL HAVE A DRY SACK FINISH. TYPICAL. |
| ⑥ | LANDSCAPING, SEE LANDSCAPING DRAWING'S. |
| ⑦ | A/C PAVING. |
| ⑧ | LINE OF TRUCK FUELING CANOPY. |
| ⑨ | LINE OF AUTO FUELING CANOPY. |
| ⑩ | TRASH ENCL. CONC. APPROACH SLAB. |
| ⑪ | ELEC. TRANSFORMER. |
| ⑫ | MULTI-PRODUCT FUEL DISPENSER. |
| ⑬ | AIR & WATER SERVICE |
| ⑭ | ABOVEGROUND FUEL STORAGE TANKS & ENCLOSURE. |
| ⑮ | COMPRESSED NATURAL GAS ENCLOSURE. |
| ⑯ | FUTURE LIQUEFIED NATURAL GAS ENCLOSURE. |
| ⑰ | ACCESSIBLE VAN PARKING STALL. |
| ⑱ | FLAG POLE. |
| ⑲ | DECORATIVE CONCRETE PATIO FOR OUTDOOR SEATING AREA. |
| ⑳ | GAS SERVICE. |
| ㉑ | FUTURE LOADING AREA FOR LNG. |
| ㉒ | 48" WIDE STRIPED ACCESS WALK WAY. |
| ㉓ | TRUNCATED DOMES - WIDTH OF ACCESS x 36" DEEP |



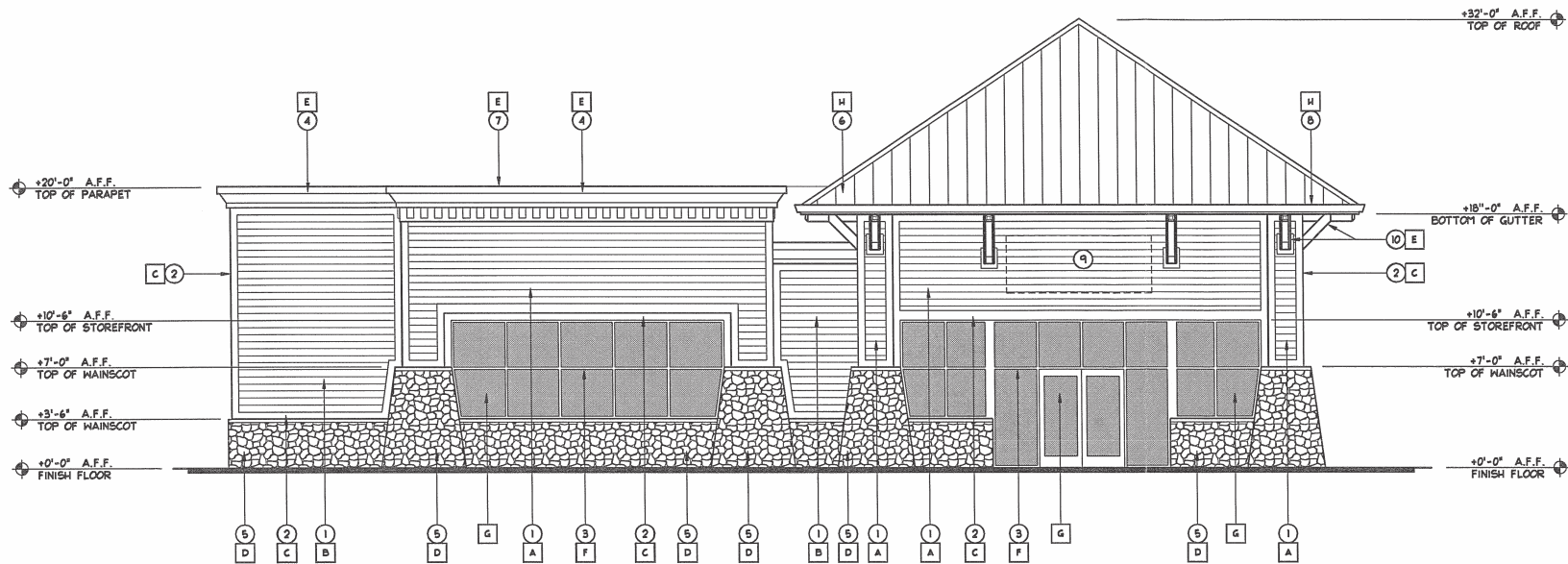
SITE PLAN

ALLIED CLEAN FUELS TERMINAL FACILITY

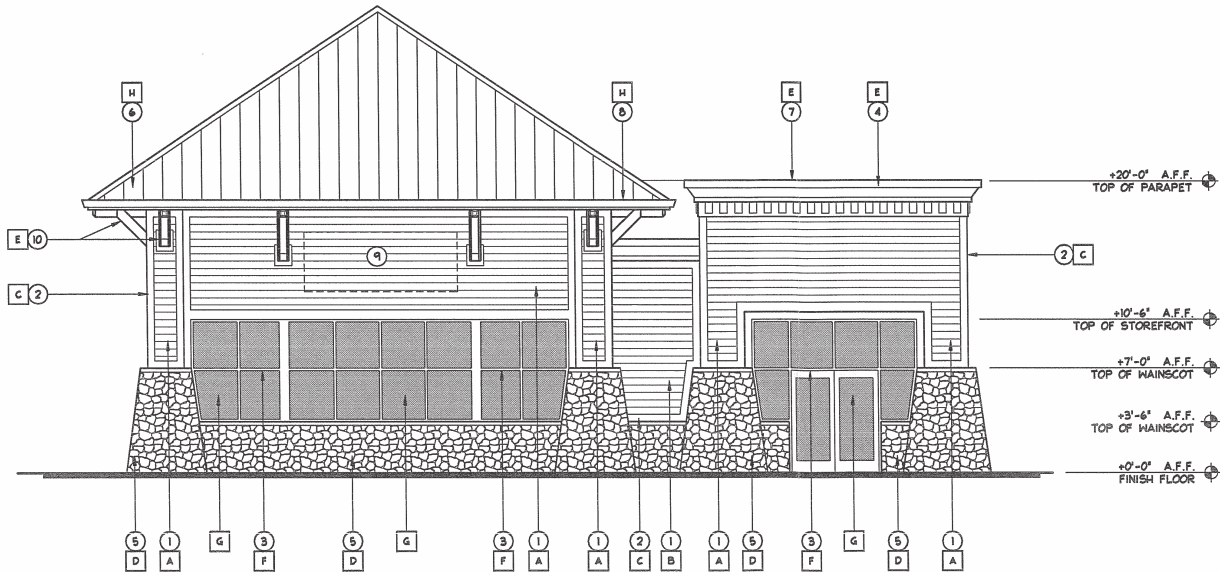


FLOOR PLAN

ALLIED CLEAN FUELS TERMINAL FACILITY

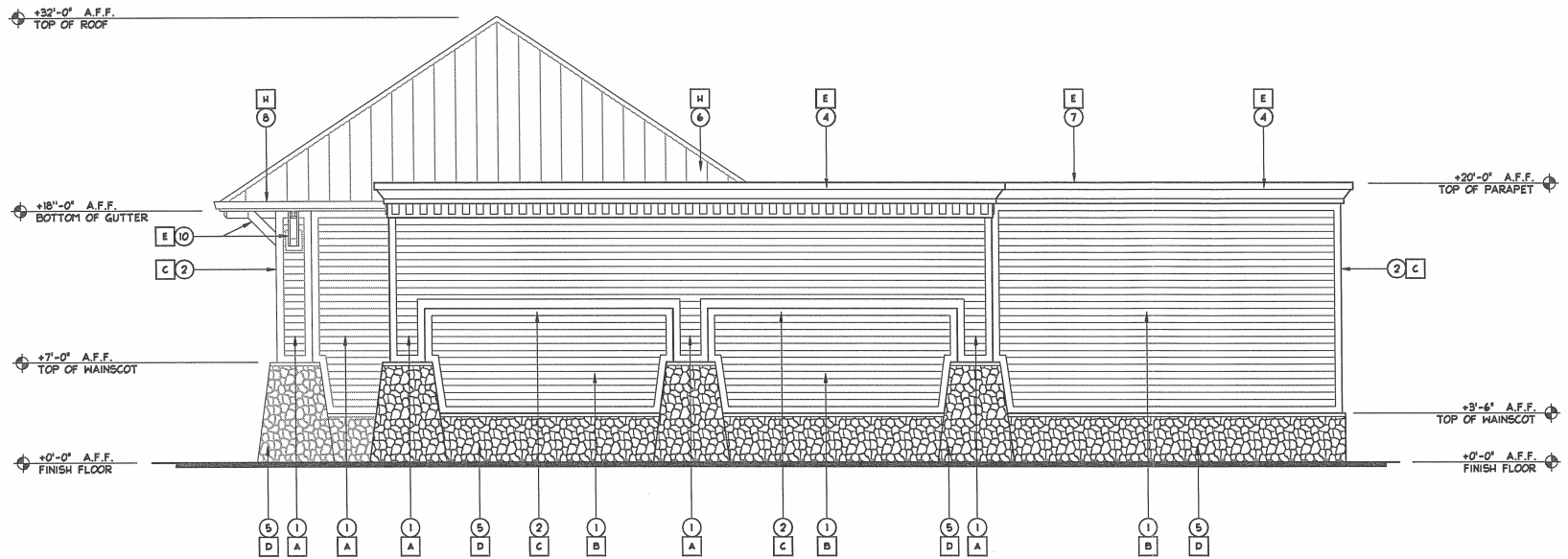


CONVENIENCE STORE - NORTH EXTERIOR ELEVATION

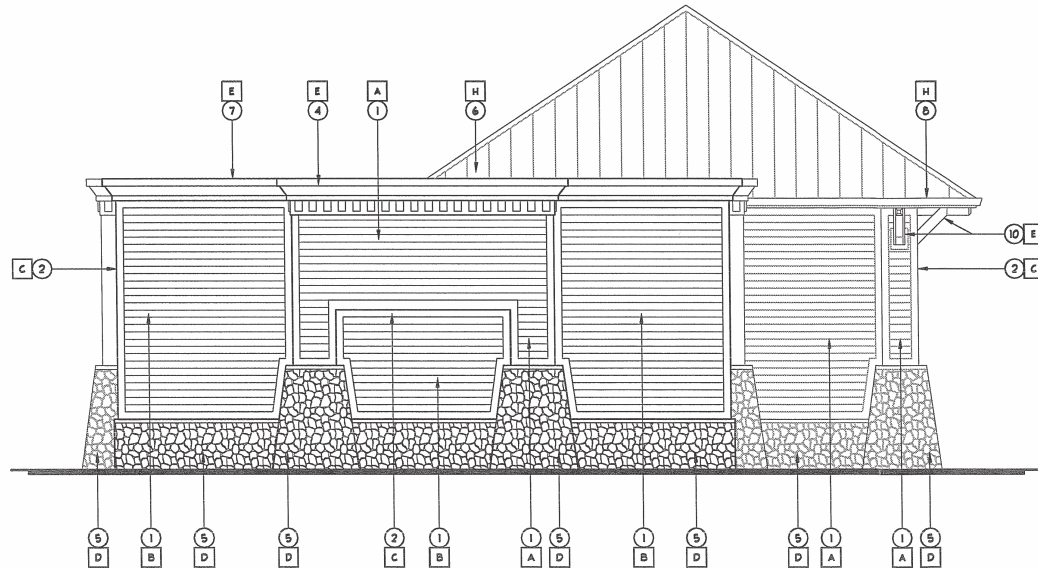


CONVENIENCE STORE - WEST EXTERIOR ELEVATION

ALLIED CLEAN FUELS TERMINAL FACILITY



CONVENIENCE STORE - SOUTH EXTERIOR ELEVATION



CONVENIENCE STORE - EAST EXTERIOR ELEVATION