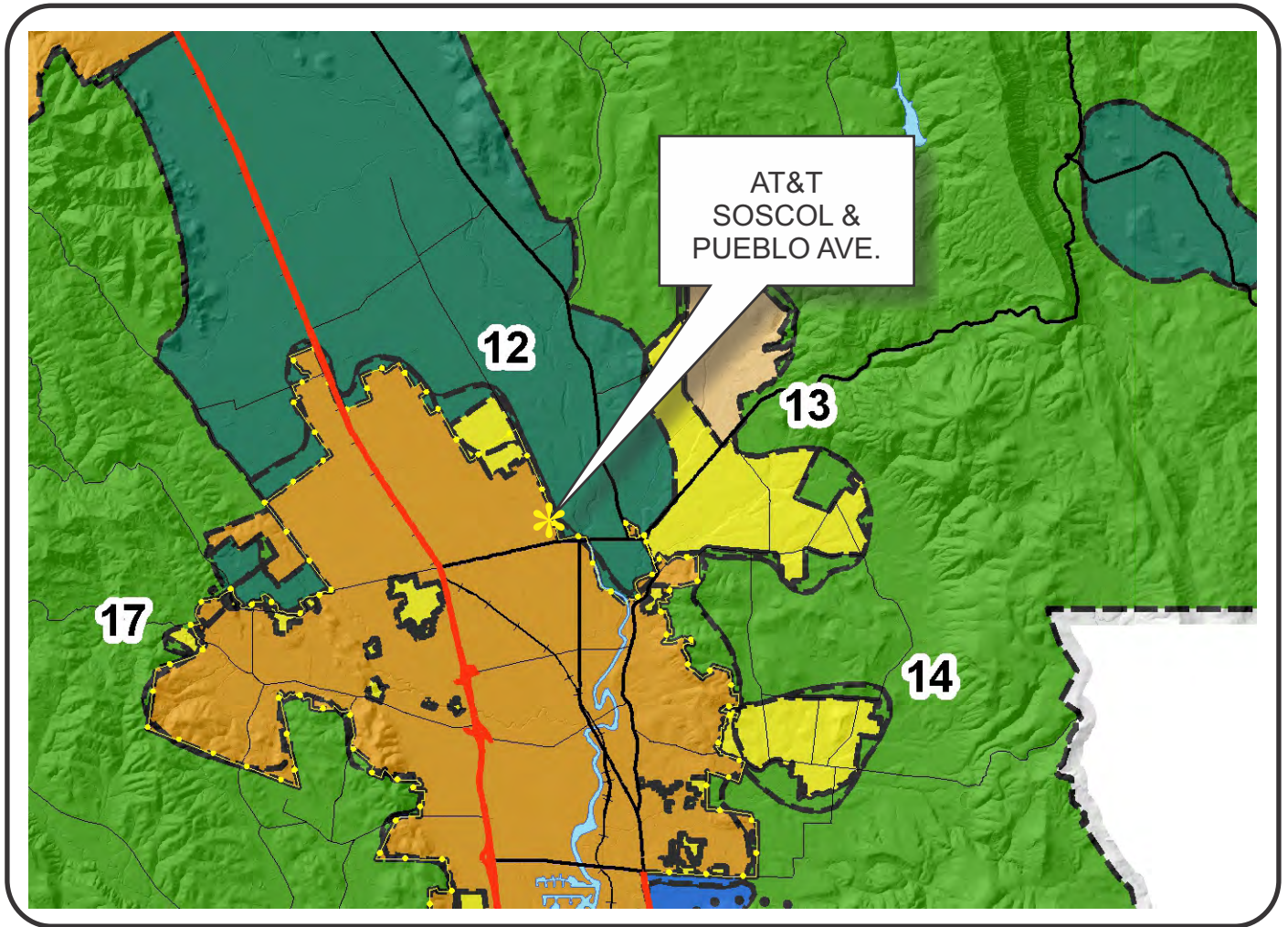








# NAPA COUNTY LAND USE PLAN 2008 - 2030





## LEGEND

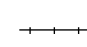


### URBANIZED OR NON-AGRICULTURAL

-  Cities
-  Urban Residential \*
-  Rural Residential \*
-  Industrial
-  Public-Institutional
-  Study Area

### OPEN SPACE

-  Agriculture, Watershed & Open Space
-  Agricultural Resource

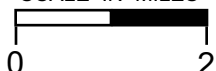
### TRANSPORTATION

-  Mineral Resource
-  Railroad
-  Limited Access Highway
-  Major Road
-  Secondary Road
-  Airport
-  Airport Clear Zone
-  Landfill - General Plan

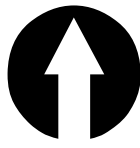
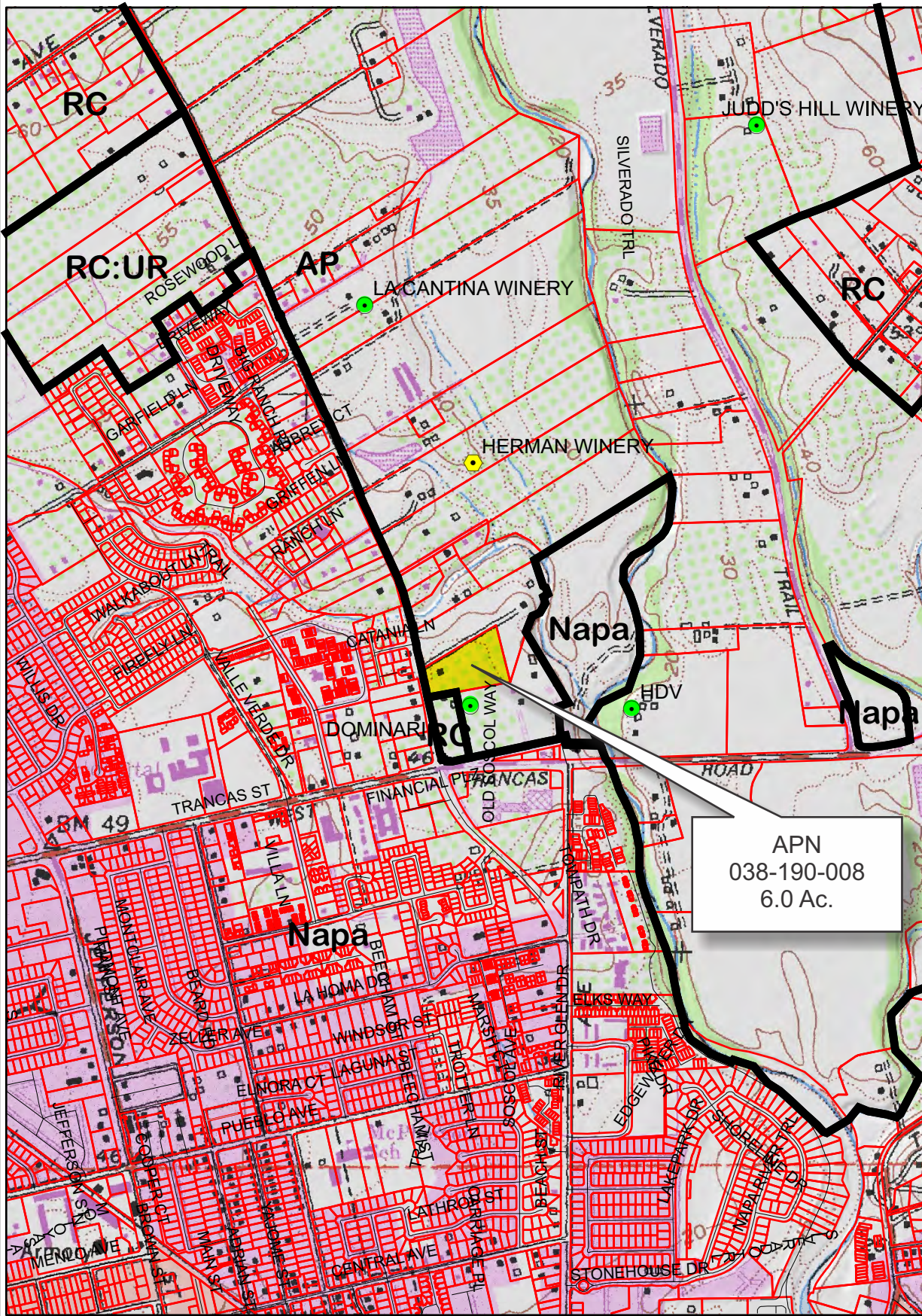
\* See Action Item AG/LU-114.1 regarding agriculturally zoned areas within these land use designations

APN  
038-190-008  
01-11-2013  
5C SPA

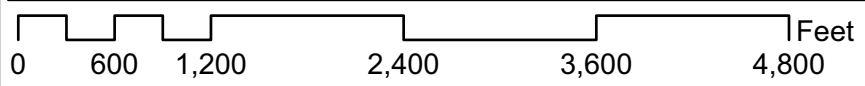
SCALE IN MILES



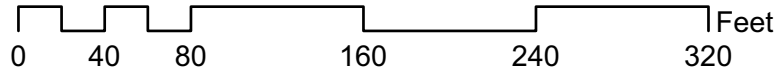
# AT&T SOSCOL & PUEBLO



- Legend**
- Wineries in Vicinity
  - Producing
  - ⬠ Approved
  - Pending
  - Parcels
  - Zoning



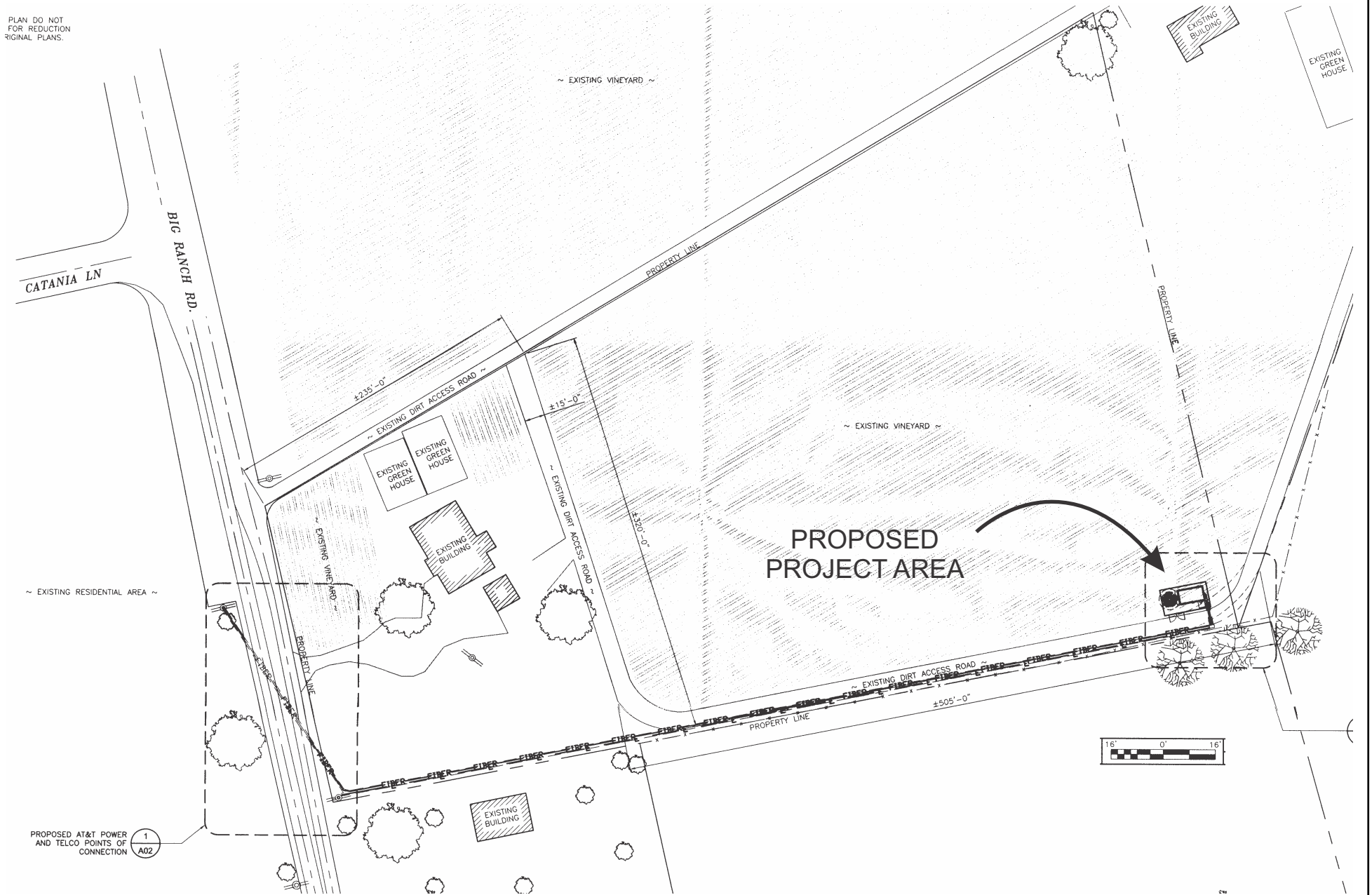
# AT&T SOSCOL & PUEBLO



Existing Conditions

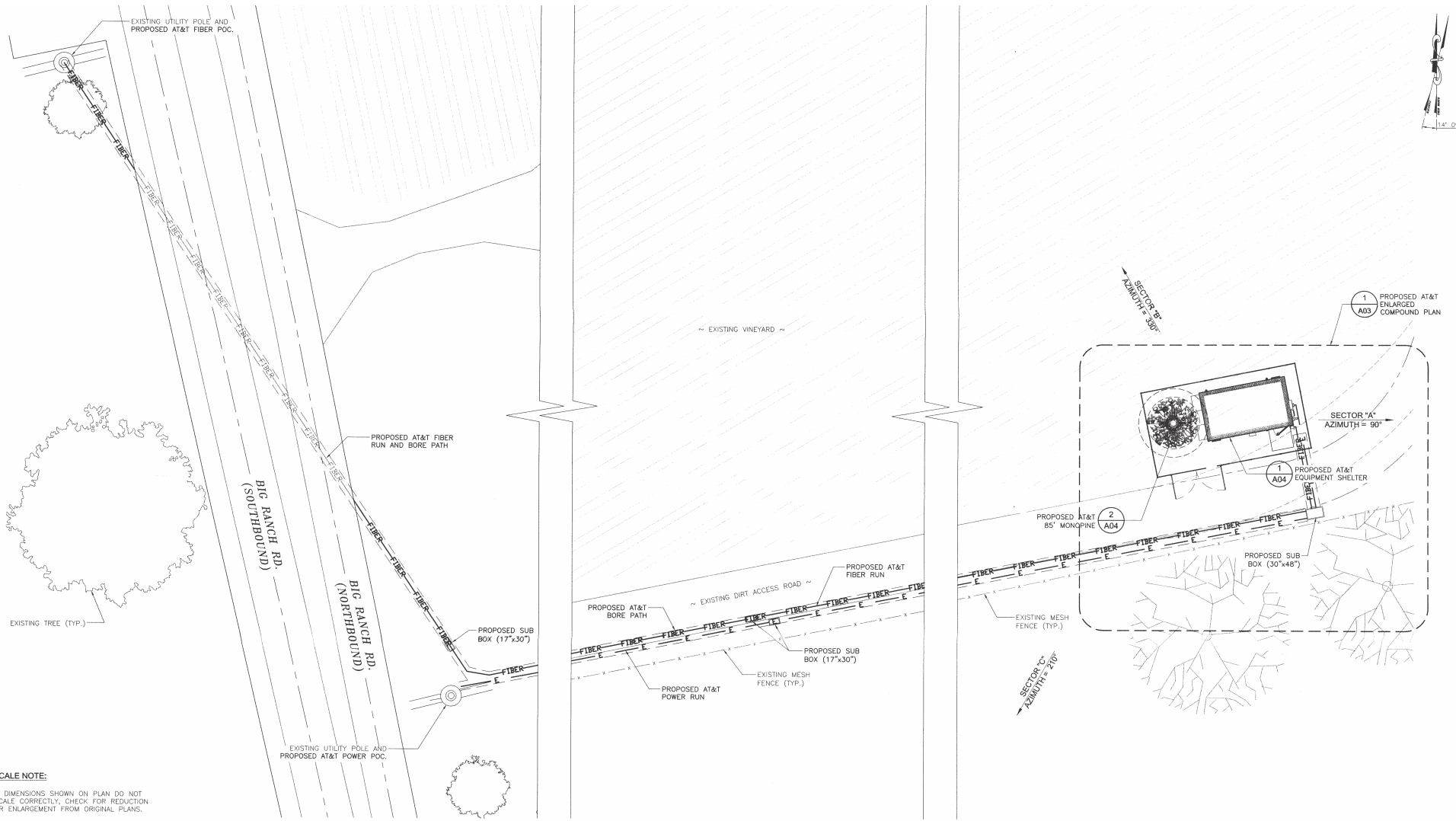
# AT&T SOSCOL & PUEBLO

PLAN DO NOT  
FOR REDUCTION  
ORIGINAL PLANS.



## SITE PLAN

# AT&T SOSCOL & PUEBLO



**SCALE NOTE:**  
IF DIMENSIONS SHOWN ON PLAN DO NOT SCALE CORRECTLY, CHECK FOR REDUCTION OR ENLARGEMENT FROM ORIGINAL PLANS.

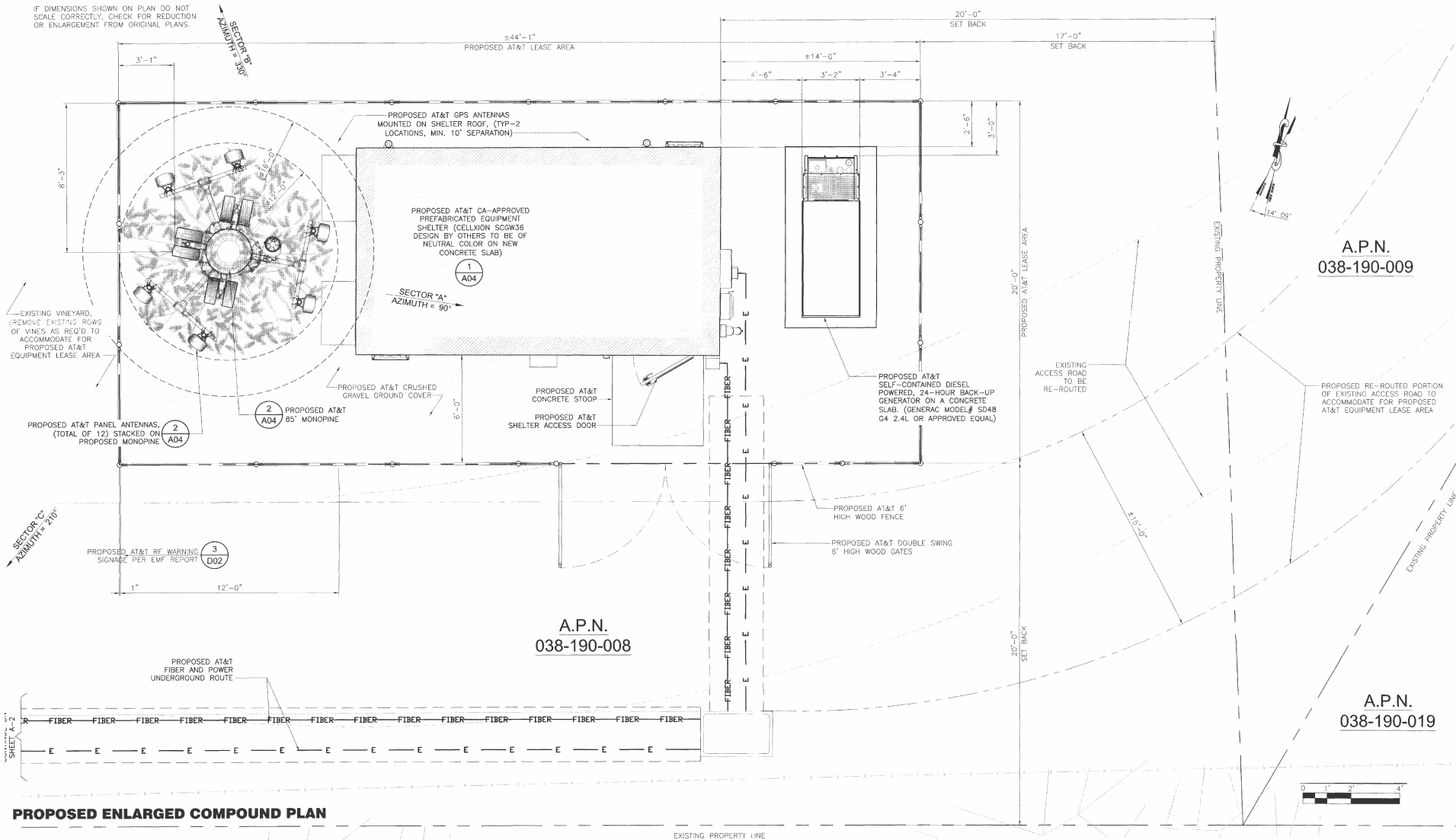
**PROPOSED ENLARGED SITE PLAN**



# AT&T SOSCOL & PUEBLO

**SCALE NOTE:**

IF DIMENSIONS SHOWN ON PLAN DO NOT SCALE CORRECTLY, CHECK FOR REDUCTION OR ENLARGEMENT FROM ORIGINAL PLANS.



**PROPOSED ENLARGED COMPOUND PLAN**

EXISTING PROPERTY LINE

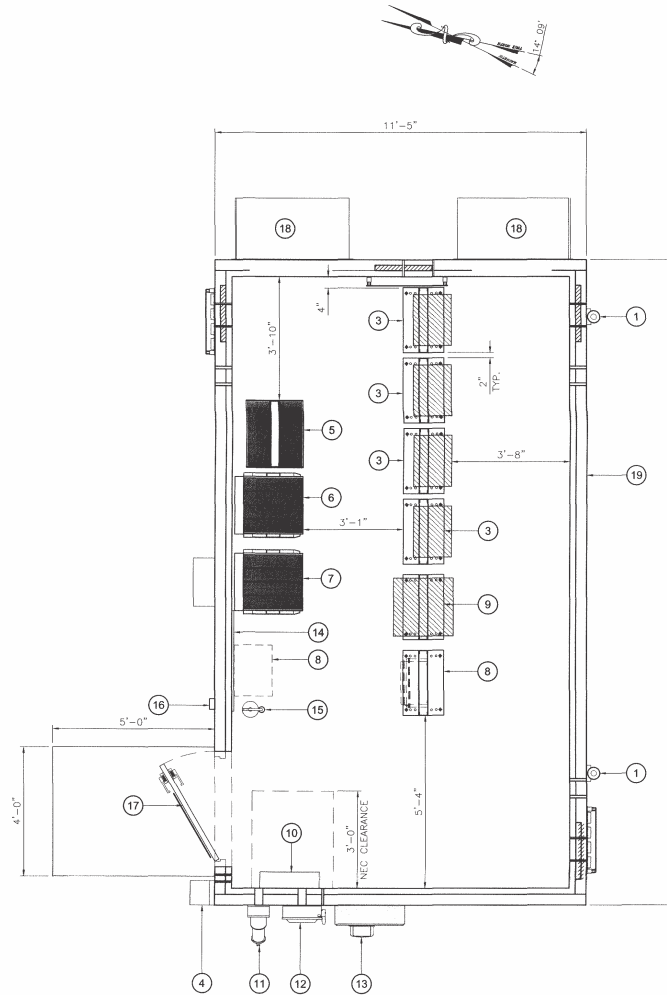
# AT&T SOSCOL & PUEBLO

## SCALE NOTE:

IF DIMENSIONS SHOWN ON PLAN DO NOT SCALE CORRECTLY, CHECK FOR REDUCTION OR ENLARGEMENT FROM ORIGINAL PLANS.

## KEYED NOTES:

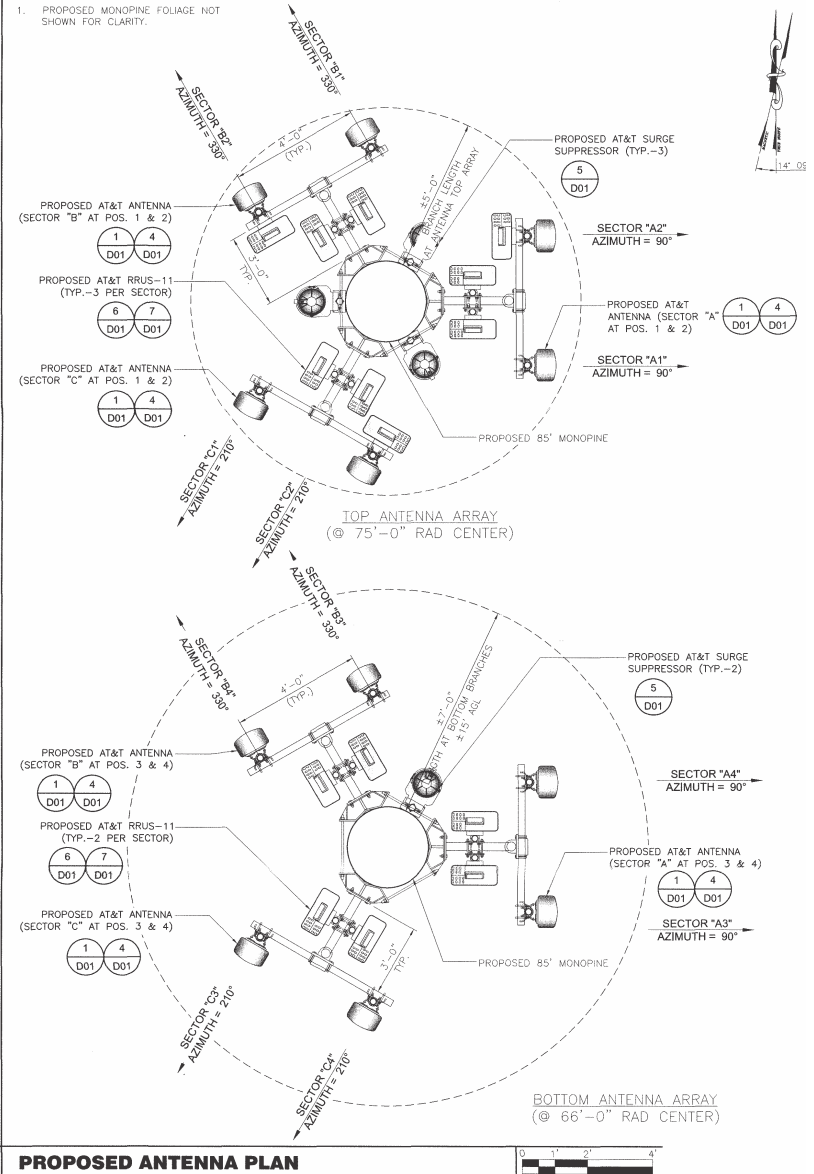
- 1 PROPOSED AT&T GPS ANTENNA MOUNTED ON EQUIPMENT SHELTER ROOF
- 2 PROPOSED AT&T 23" RACK FOR RBS 6601 LTE [1.5U EACH]
- 3 PROPOSED AT&T 23" RACK FOR RBS 6601 UMTS [1.5U EACH]
- 4 PROPOSED EXTERIOR SERVICE LIGHT
- 5 PROPOSED AT&T DC POWER PLANT
- 6 PROPOSED AT&T BATTERY RACK
- 7 PROPOSED AT&T BATTERY RACK
- 8 OPTIONAL AT&T MUX AND FUTURE UAM/CIENA MOUNT ON WALL OR ON RACK
- 9 PROPOSED AT&T EQUIPMENT RACK
- 10 PROPOSED AT&T 200AMP ELECTRICAL PANEL (PROVIDED WITH SHELTER)
- 11 PROPOSED SWITCH DISCONNECT WITH GENERATOR PLUG MOUNTED ON SHELTER
- 12 PROPOSED AT&T ELEC. METER WITH DISCONNECT SWITCH WALL MOUNTED ON SHELTER
- 13 PROPOSED AT&T ELEC. METER WALL MOUNTED ON SHELTER
- 14 PROPOSED AT&T TELCO BOARD (PROVIDED WITH SHELTER)
- 15 PROPOSED AT&T FIRE EXTINGUISHER
- 16 PROPOSED FIRE DEPT KNOX KEY BOX
- 17 PROPOSED AT&T EMERGENCY CONTACT INFORMATION SIGNAGE
- 18 PROPOSED A/C UNIT (TYP.-2), PROVIDED WITH SHELTER
- 19 PROPOSED AT&T CA-APPROVED PREFABRICATED EQUIPMENT SHELTER TO BE OF NEUTRAL COLOR. (DESIGN BY CELLIXION)



**PROPOSED EQUIPMENT LAYOUT**

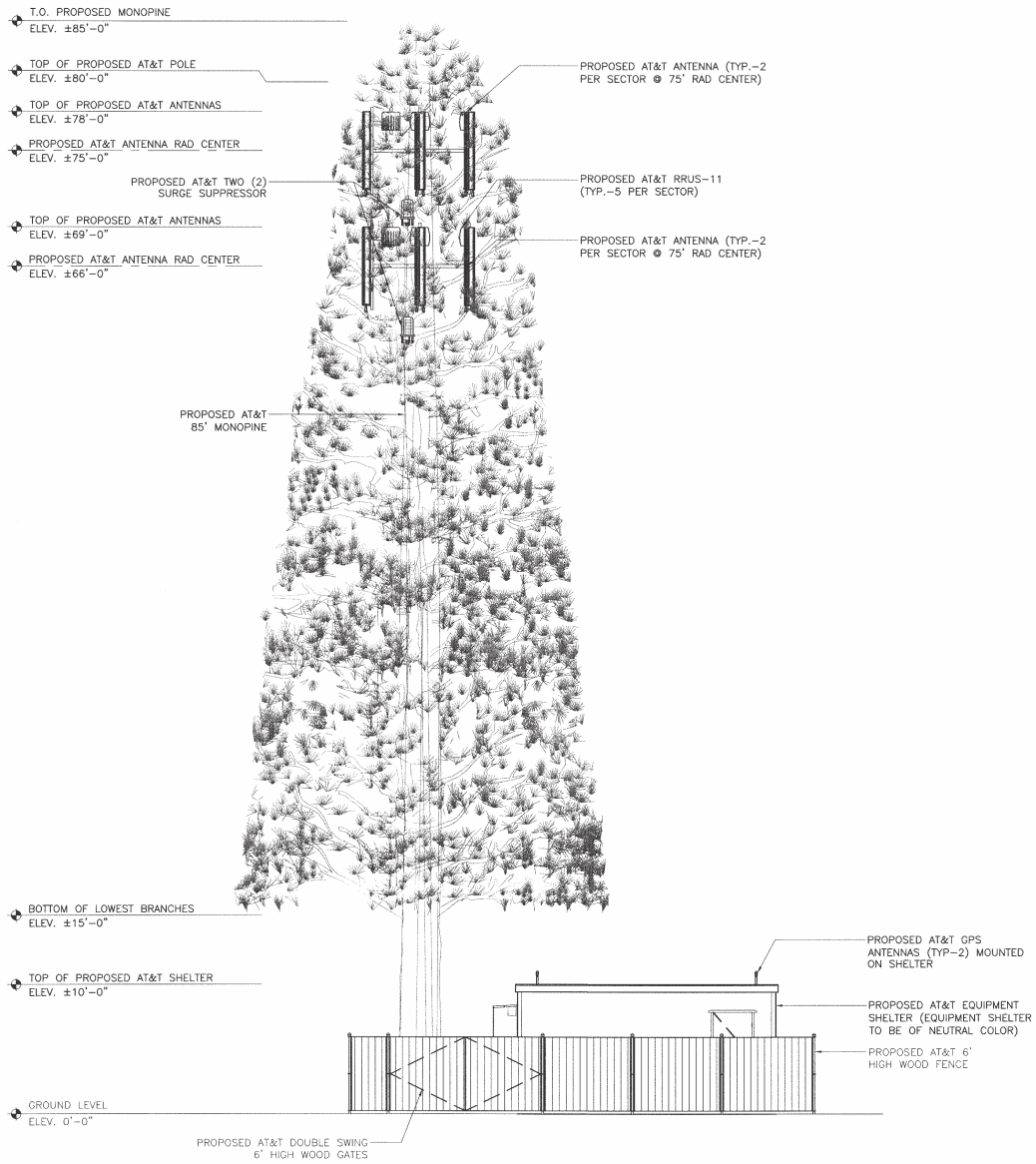
## NOTE:

1. PROPOSED MONOPINE FOLIAGE NOT SHOWN FOR CLARITY.

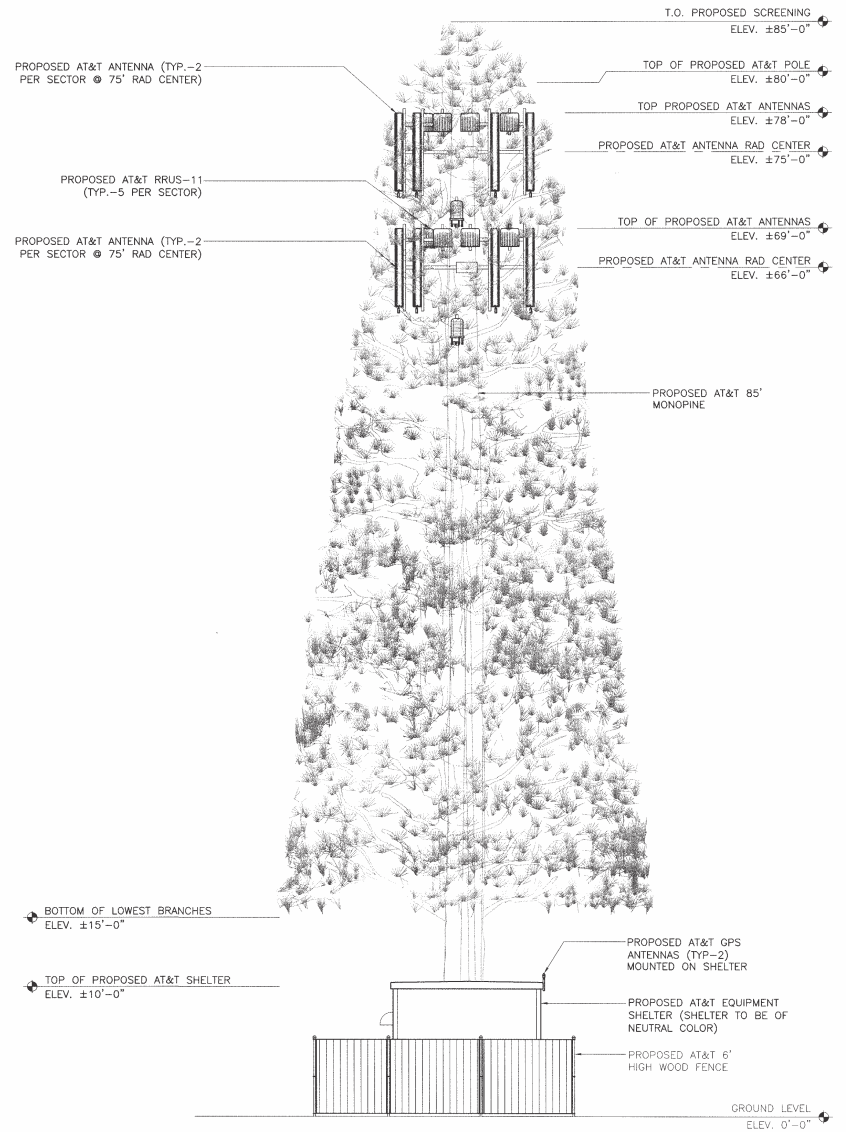


**PROPOSED ANTENNA PLAN**

# AT&T SOSCOL & PUEBLO



**PROPOSED SOUTH ELEVATION**



**PROPOSED EAST ELEVATION**

