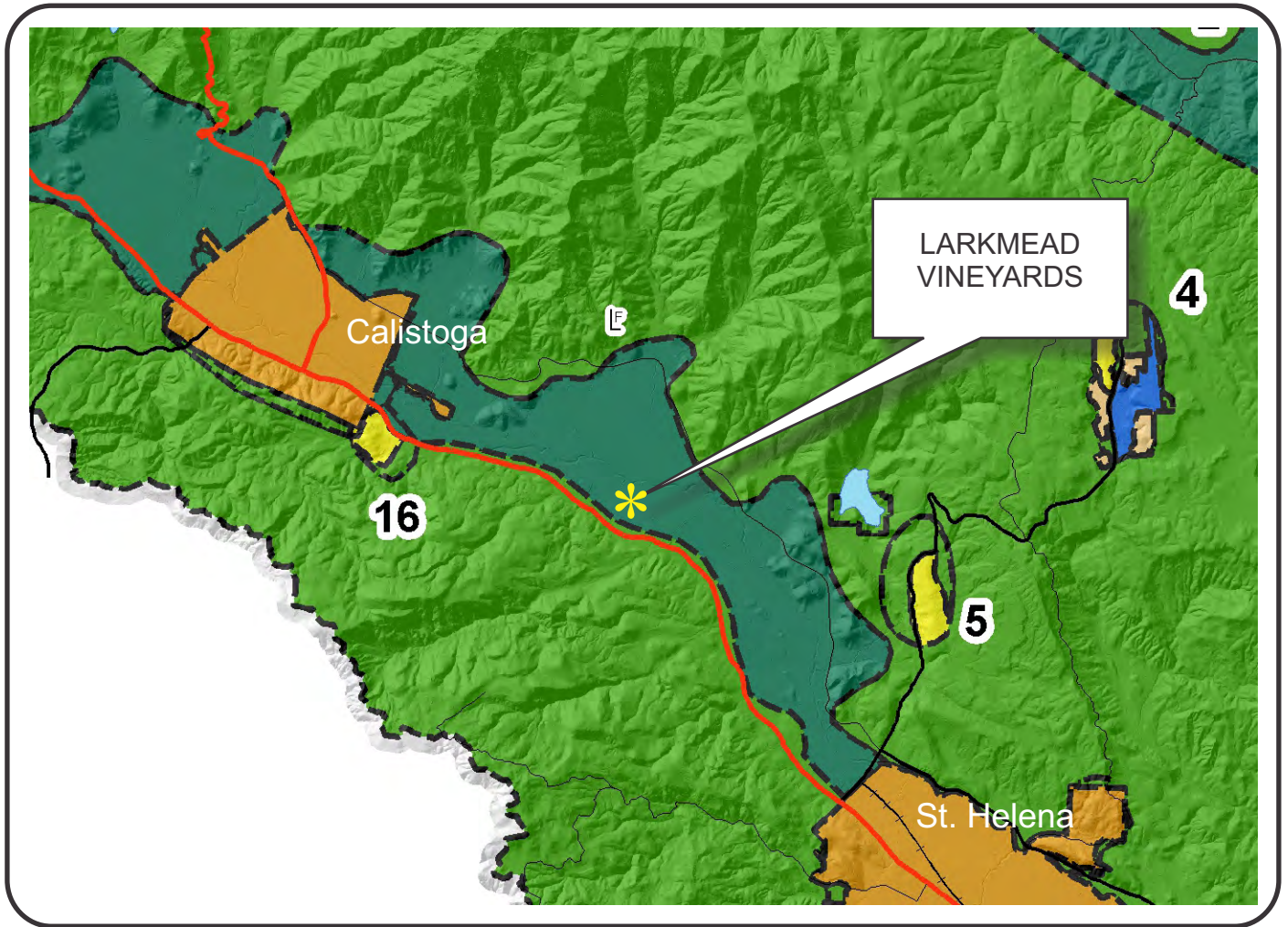








NAPA COUNTY LAND USE PLAN 2008 - 2030





LEGEND

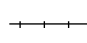


URBANIZED OR NON-AGRICULTURAL

-  Cities
-  Urban Residential *
-  Rural Residential *
-  Industrial
-  Public-Institutional
-  Study Area

OPEN SPACE

-  Agriculture, Watershed & Open Space
-  Agricultural Resource

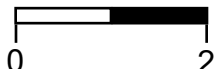
TRANSPORTATION

-  Mineral Resource
-  Railroad
-  Limited Access Highway
-  Major Road
-  Secondary Road
-  Airport
-  Airport Clear Zone
-  Landfill - General Plan

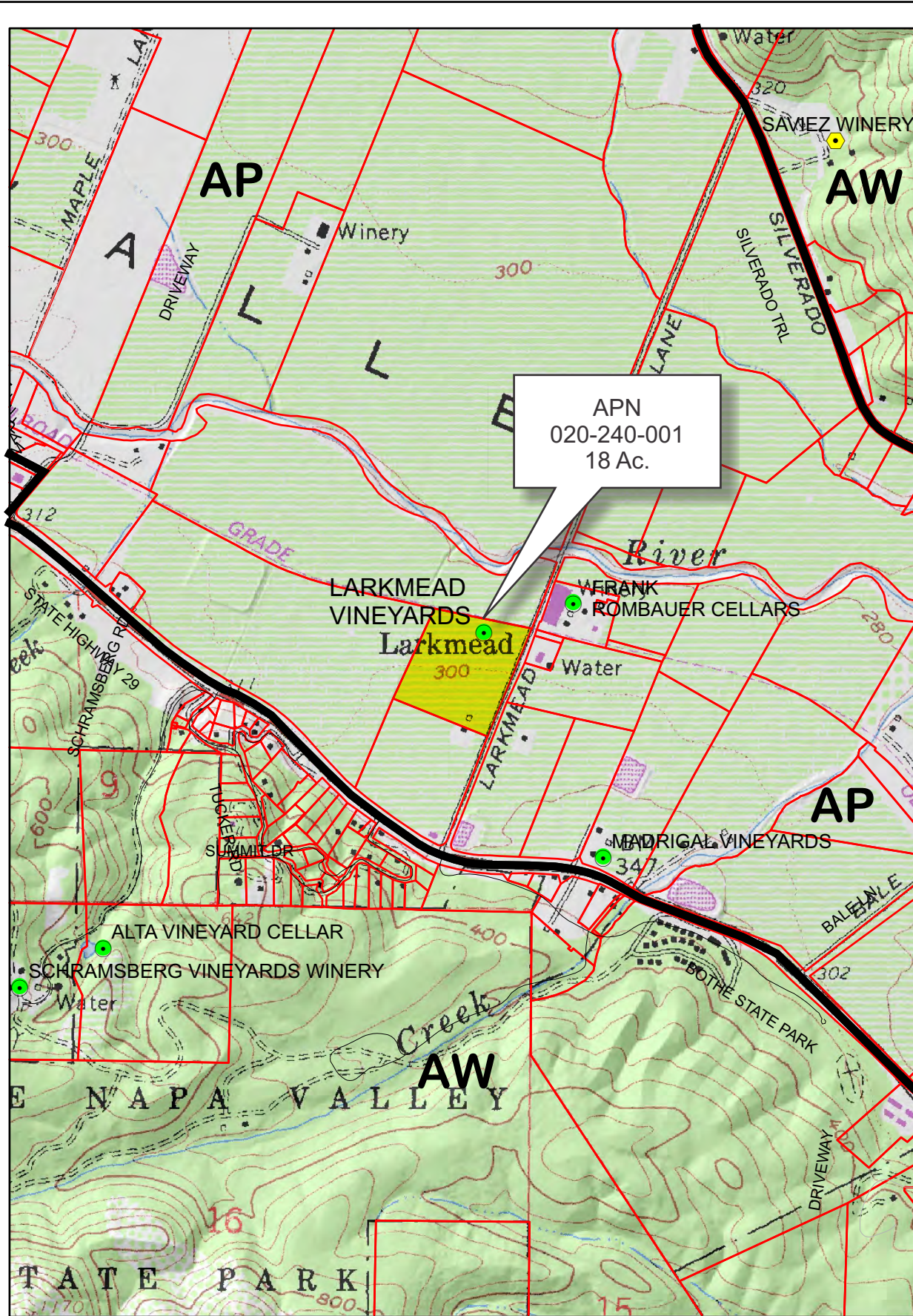
* See Action Item AG/LU-114.1 regarding agriculturally zoned areas within these land use designations

APN
020-240-001
05-29-2012
10C MOD

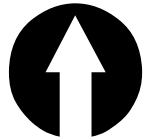
SCALE IN MILES



LARKMEAD VINEYARDS

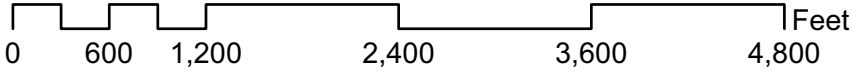


APN
020-240-001
18 Ac.

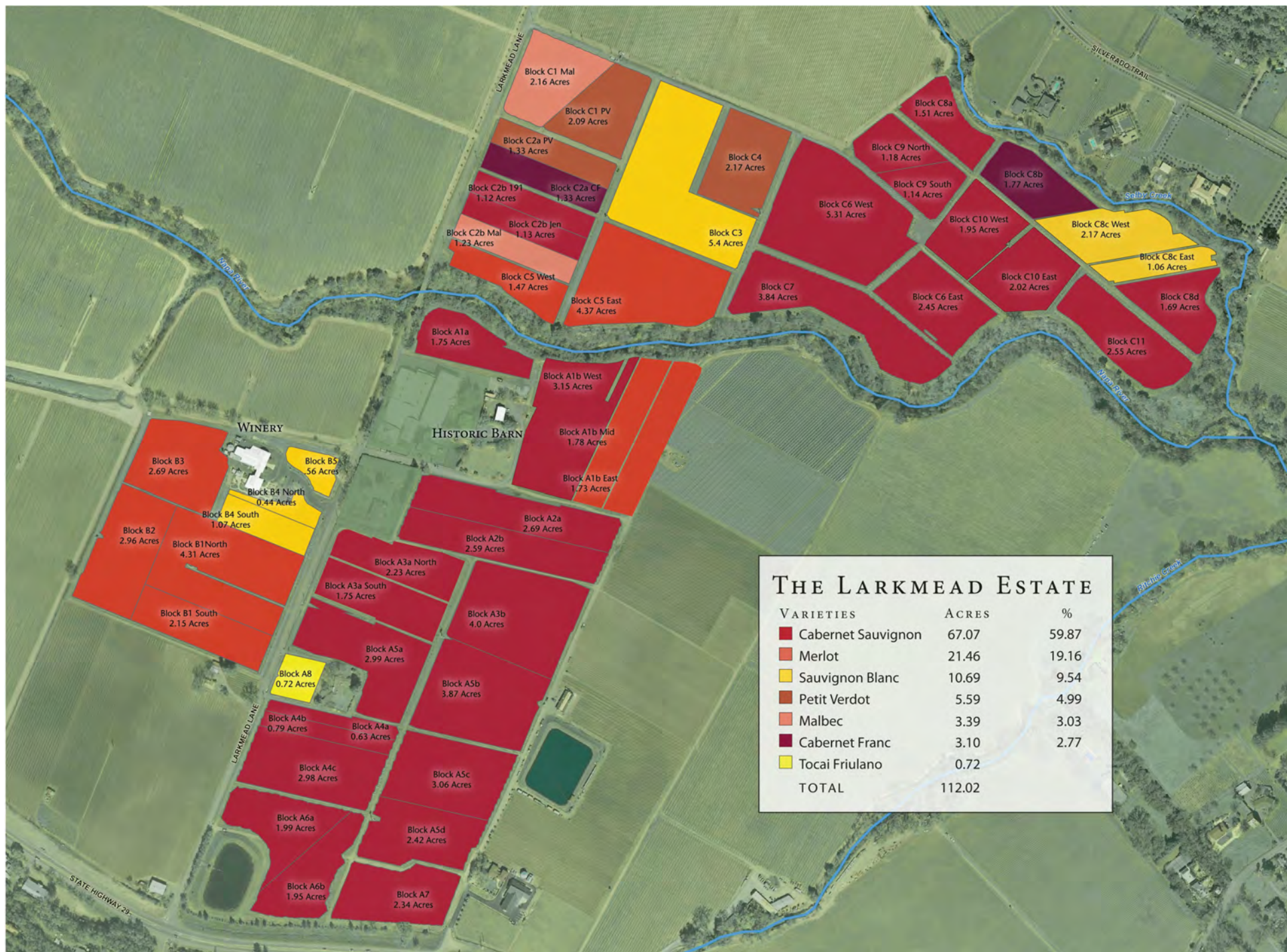


Legend

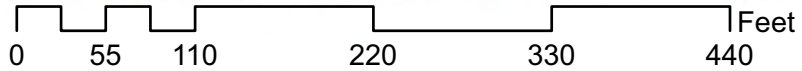
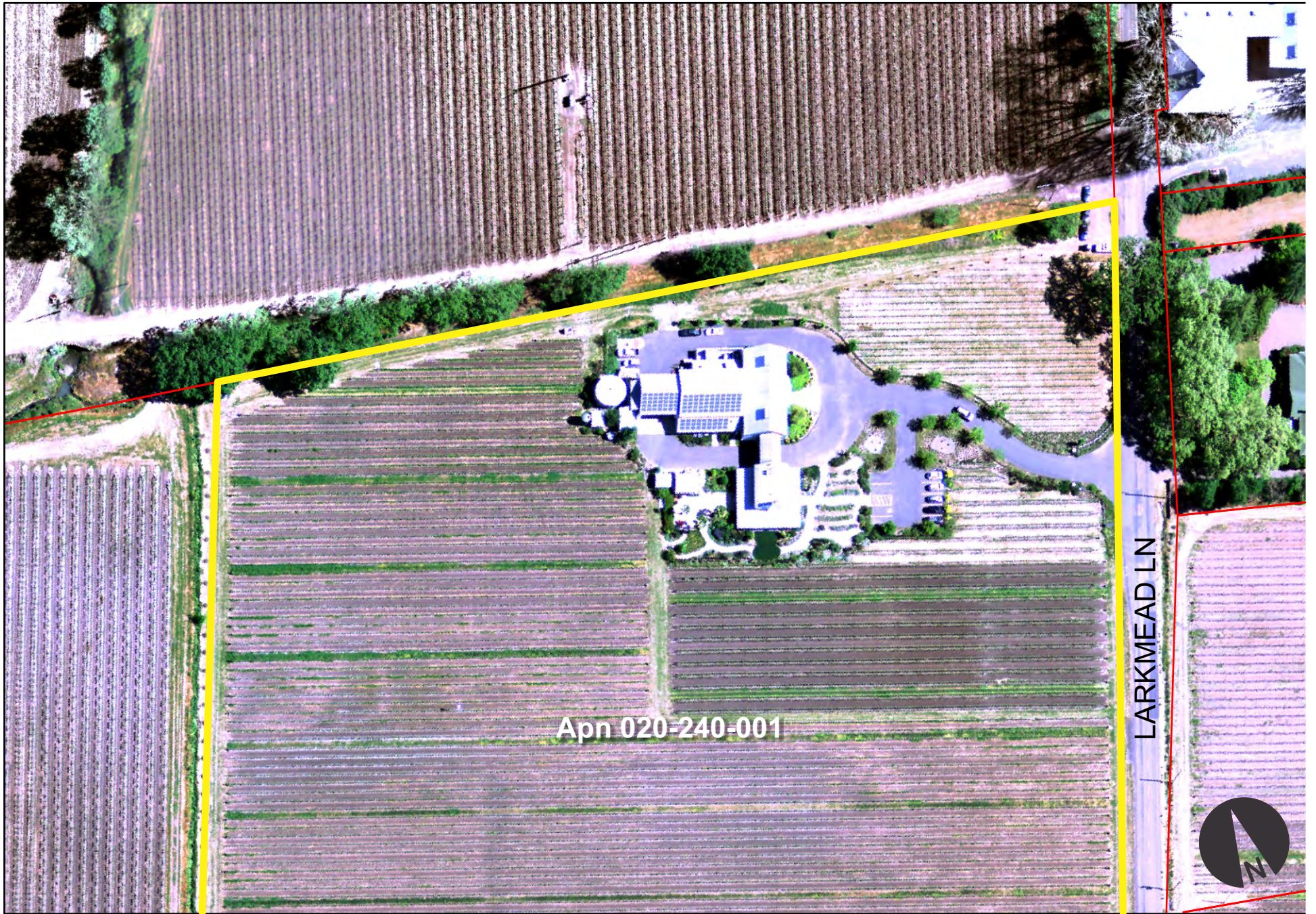
- Wineries in Vicinity - Producing
- Wineries in Vicinity - Approved
- Wineries in Vicinity - Pending
- Parcels
- Zoning



LARKMEAD VINEYARDS



LARKMEAD VINEYARDS

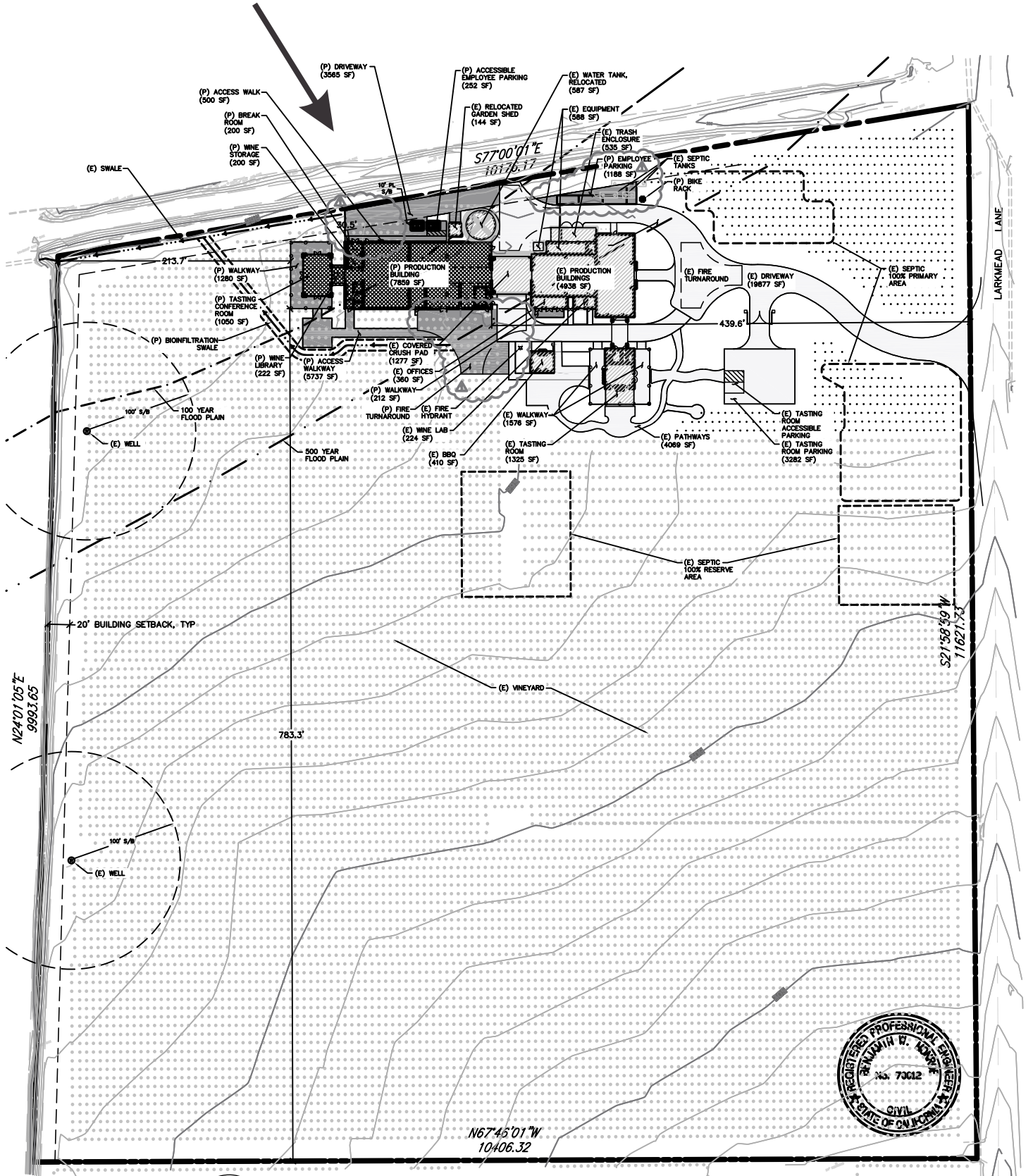


Existing Conditions



LARKMEAD VINEYARDS

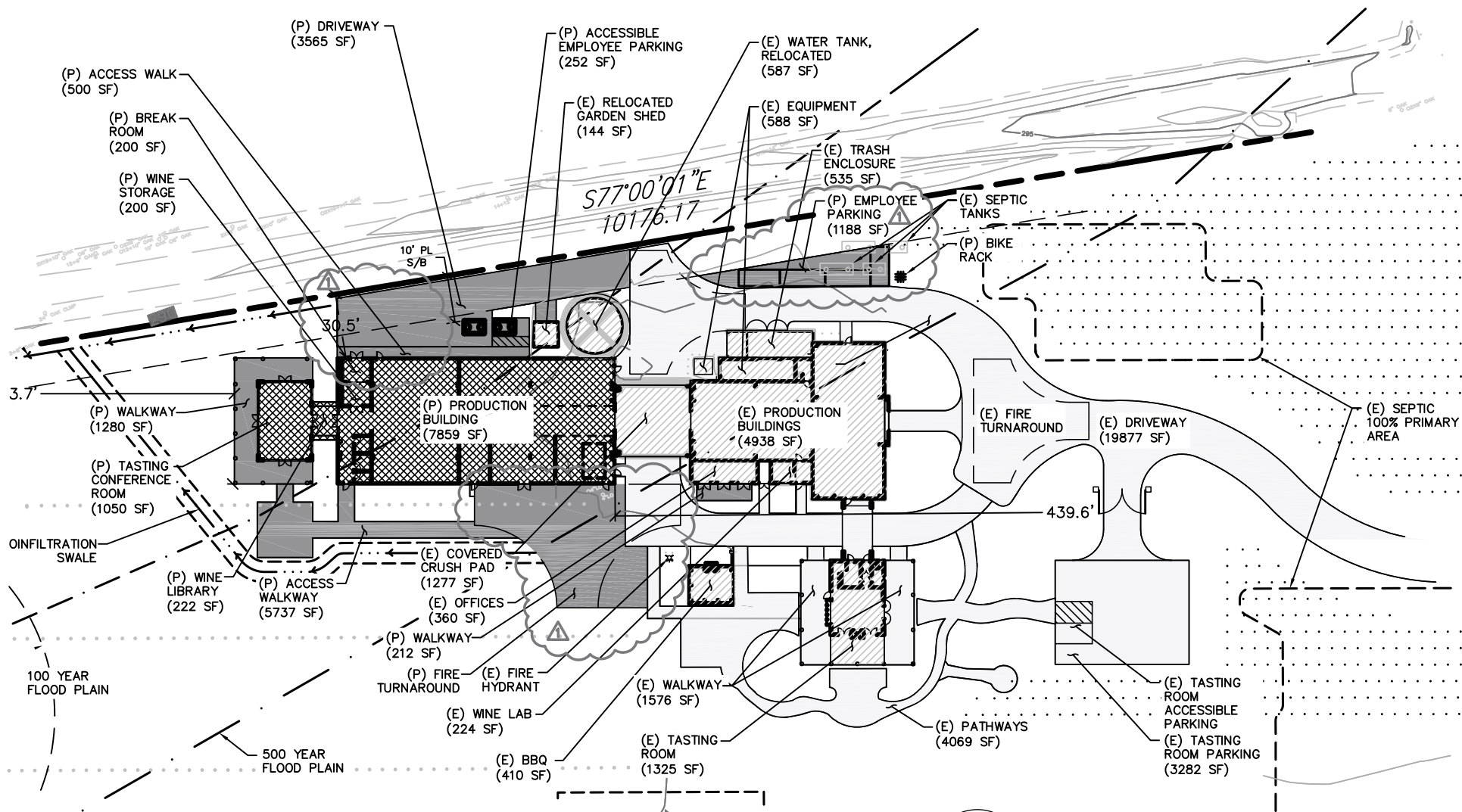
See Detail A



PLAN VIEW

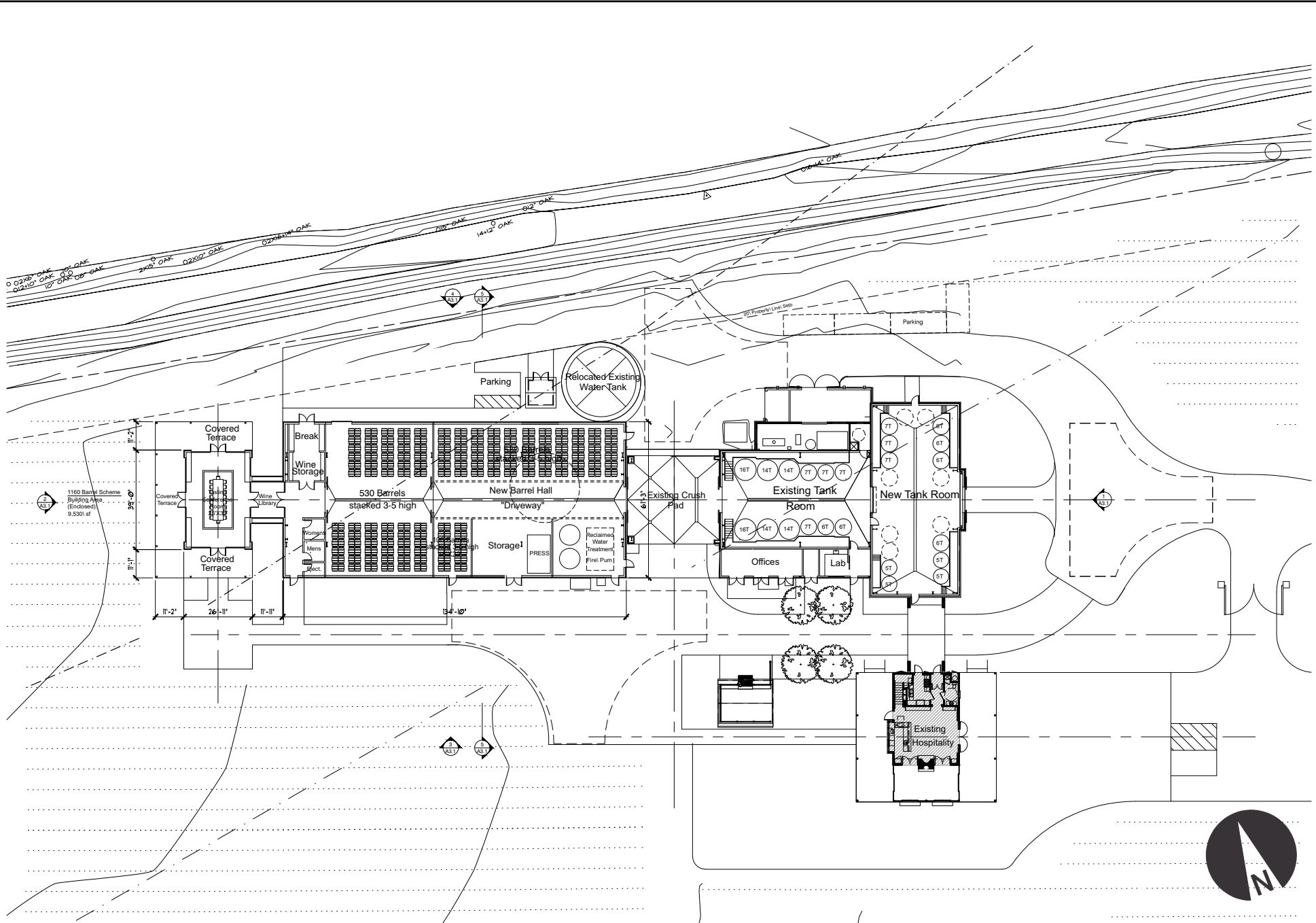


LARKMEAD VINEYARDS



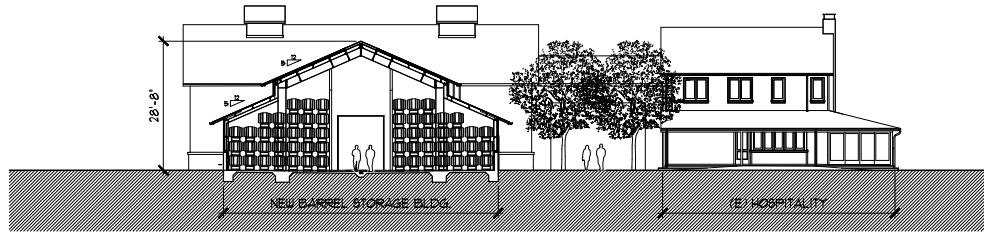
Plan View Detail A

LARKMEAD VINEYARDS

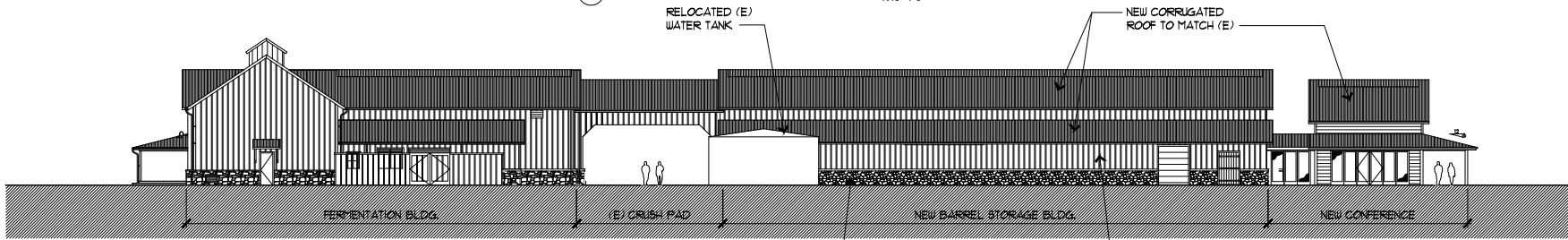


New Barrel Hall

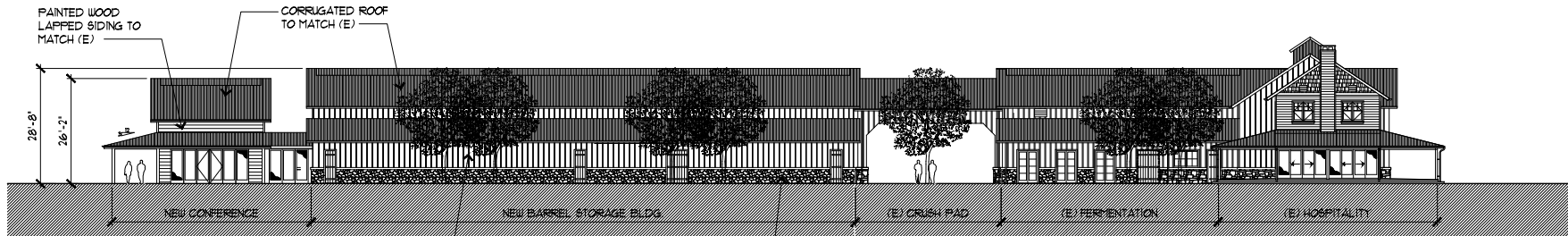




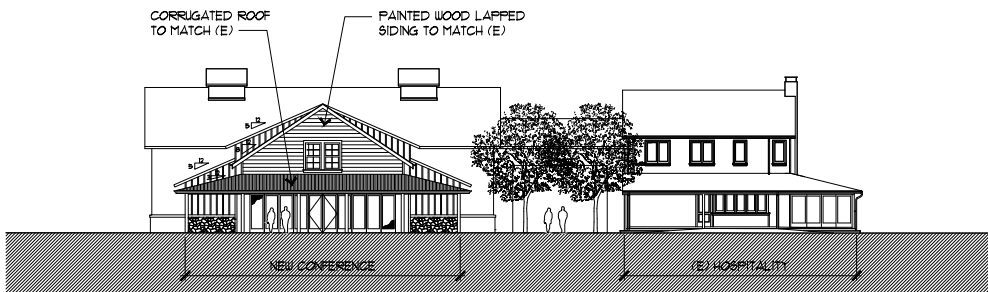
5 SECTION 1/16"=1'-0"



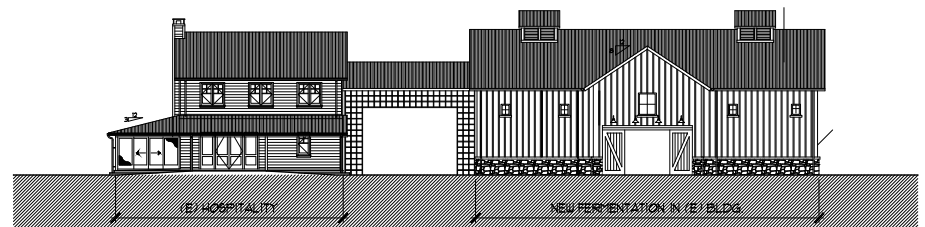
4 NORTH ELEVATION 1/16"=1'-0"



3 SOUTH ELEVATION 1/16"=1'-0"



2 WEST ELEVATION 1/16"=1'-0"



1 EXISTING EAST ELEVATION 1/16"=1'-0"

LARKMEAD VINEYARDS

OUTLINE OF NEW BARREL BUILDING BEYOND
GENERALLY OBSCURED BY EXISTING BUILDINGS
AND LANDSCAPING



© Erhard Pfeiffer 2011

VIEW OF EXISTING WINERY FROM LARKMEAD LANE

LARKMEAD VINEYARDS

EXISTING FIRE WATER TANK TO BE RELOCATED TO EAST SIDE OF WINERY

EXISTING DOMESTIC WATER TANK AND FIRE PUMP TO BE LOCATED WITHIN NEW BARREL BUILDING



© Erhard Pfeiffer 2011

NORTHWEST ELEVATION OF EXISTING WINERY

LARKMEAD VINEYARDS

NEW BARREL BUILDING FINISHES AND PROFILE TO MATCH EXISTING WITH CORRUGATED METAL ROOFING, PAINTED BOARD AND BATTEN WOOD SIDING AND SYAR STONE BASE, TYPICAL.



VIEW OF EXISTING WINERY FROM VINEYARD TO THE WEST